

# L'ESPLANADE

## CONDOS



VIVRE LE RÊVE. CONDOS DE STYLE VILLÉGIATURE. LIVE THE DREAM. RESORT-STYLE CONDOS.



## 724 ROUTE 133, POINTE-DU-CHÊNE, NB

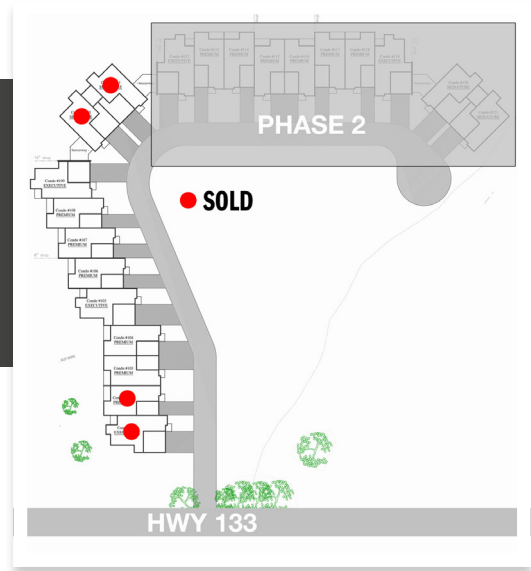
Every suite is infused with sophistication and style, from chef-inspired kitchens and quartz countertops to spa bathrooms.

L'esplanade suites feature 9-foot ceilings with large windows for natural light and the luxurious open concept living room opens up to the private covered terrace.

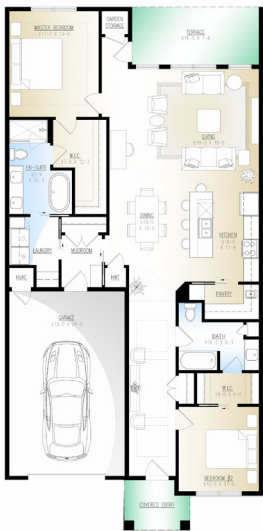
L'esplanade's pet-friendly suites feature full-size laundry and a mudroom.



**THE PERFECT LOCATION FOR SHEDIAC'S FINEST LUXURY CONDOS DEVELOPMENT.**



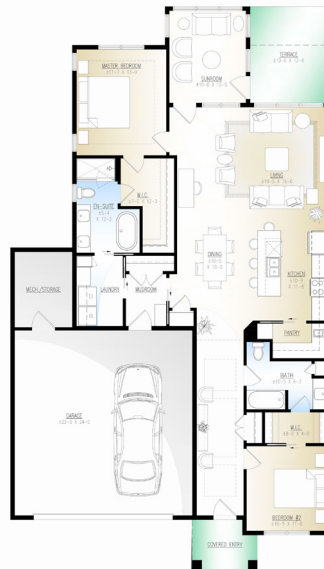
# 3 STYLES TO SUIT YOU



## THE PREMIUM

Chef-inspired kitchen, spa ensuite bath, walk-in closets, and a garage, all trimmed to perfection.

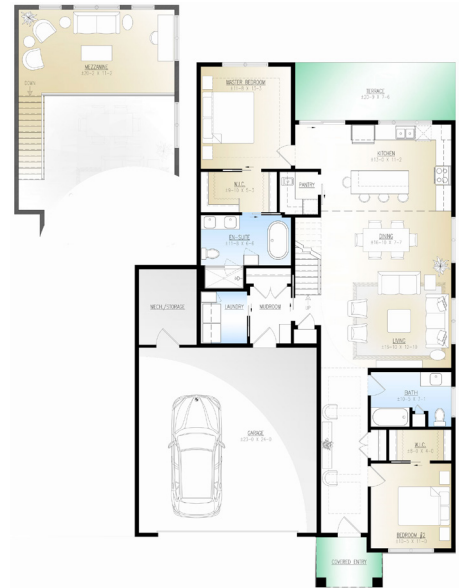
- FT<sup>2</sup>** 1551 ft<sup>2</sup>
- 2 Bed
- 2 Bath



## THE EXECUTIVE

Everything you need in the finest quality, with a gorgeous sunroom and double garage.

- FT<sup>2</sup>** 1664 ft<sup>2</sup>
- 2 Bed
- 2 Bath



## THE SIGNATURE

Our finest suite, with 17-foot ceilings, a large mezzanine and a terrace.

- FT<sup>2</sup>** 1792 ft<sup>2</sup>
- 2 Bed
- 2 Bath

**KEVIN CAISSIE**

961-4466  
kevin@creativrealty.com



**LESPLANADE.CA**