



# WESTON PLACE

WEST VANCOUVER



FIND YOUR PLACE

## 57 Finely Crafted Concrete Homes Nestled in West Vancouver

Get caught up in every moment — from the beauty of your spacious home to the charm of your walkable community. Weston Place is an intimate collection of one-to-three-bedroom homes tucked within a familiar neighbourhood, where the places and experiences you cherish are only a short walk away.

A meaningful life unfolds.





WESTON PLACE

DOWNTOWN VANCOUVER

WEST VANCOUVER  
AQUATIC CENTRE

WEST VANCOUVER  
COMMUNITY CENTRE

AMBLESIDE PARK

WEST VANCOUVER  
CENTENNIAL SEAWALK

MARINE DRIVE

DUNDARAVE SHOPS

A Rooted Sense of Place





WESTON PLACE

SALES GALLERY

RECREATION

- 1 West Vancouver Community Centre
- 2 West Vancouver Aquatic Centre
- 3 West Vancouver Tennis Club
- 4 West Vancouver Lawn Bowling Club
- 5 West Vancouver Memorial Library
- 6 Ferry Building Gallery
- 7 Ambleside Par 3
- 8 Hollyburn Country Club
- 9 Capilano Golf and Country Club
- 10 Cineplex Cinemas Park Royal and VIP

PARKS

- 11 West Vancouver Centennial Seawalk
- 12 Weston Park
- 13 Navy Jack Point Park
- 14 Memorial Park
- 15 John Lawson Park
- 16 Capilano River Regional Park
- 17 Ambleside Pier
- 18 Ambleside Beach
- 19 Dundarave Beach
- 20 Capilano Pacific Trail
- 21 Cleveland Dam
- 22 Mount Seymour
- 23 Grouse Mountain
- 24 Cypress Mountain
- 25 Horseshoe Bay
- 26 Whistler

RESTAURANTS

- 27 Beach House Restaurant
- 28 Earls Kitchen + Bar
- 29 Ancora Waterfront Dining and Patio
- 30 Crema Café Bar
- 31 Raku Japanese Kitchen
- 32 OEB Breakfast Co.
- 33 Starbucks
- 34 Temper Chocolate & Pastry
- 35 Delany's Coffee House

RETAIL

- 36 Park Royal
- 37 Tesla
- 38 Whole Foods Market
- 39 Fresh St. Market
- 40 Okanagan Estate Wine Cellar
- 41 Aburi Market
- 42 Shoppers Drug Mart

SCHOOLS

- 43 École Pauline Johnson Elementary
- 44 West Vancouver Secondary

FINANCIAL

- 45 RBC Wealth Management
- 46 Vancity
- 47 HSBC Bank Canada
- 48 CIBC Wood Gundy
- 49 TD Canada Trust



# A Refined Address for West Coast Living

Embrace the independence of a lock-and-leave lifestyle in a timeless expression of West coast contemporary architecture. As with every community by Darwin and Citimark, design and construction are approached through a thoughtful lens. As you settle into your new home, it will feel like a perfect fit — you'll know that this is where you belong.





# Inviting, Functional, & Radiant

Interiors parallel those of a stand-alone home, with space to invite family for a holiday meal or friends for cocktail hour. Enhanced by elegant herringbone-patterned flooring, purposeful layouts maximize space and allow for flexibility when it comes to furniture arrangements. Expansive windows drench your home in natural light throughout — there are no compromises in these large and expressive homes.







STONE OPTION 2

A quiet sophistication echoes throughout spacious interiors, where each detail is carefully curated to create an elevated setting for everyday living and entertaining. Choose from two colour palettes, each with two cabinetry finish options, to ensure your space aligns with your style.







# Inspiring Kitchens

## Ignite Culinary Creativity



**PROFESSIONAL WOLF APPLIANCES**

Streamline your cooking with the Wolf built-in and transitional speed ovens and gas cooktop — perfect for all kinds of feasts.



**PREMIUM SUB-ZERO APPLIANCES**

Keep food fresher for longer in the Sub-Zero refrigerator and freezer, and store drinks in the built-in beverage centre.



**SLEEK CABINETRY**

Add a personal touch by selecting from two colour palettes — each with two cabinetry finish options and stylish satin-nickel or brushed-gold pulls.



**INTEGRATED LAUNDRY STATION**

A dedicated laundry station, featuring full-sized front-loading LG appliances, storage, and hang-to-dry compartment adds convenience to daily tasks.



**VERSATILE KITCHEN ISLAND**

Oversized islands, up to 12 feet in length, featuring waterfall edges and integrated storage — perfect for meal preparation or casual dining.



**USEFUL STORAGE**

Finely crafted millwork throughout large kitchens offers creative open and hidden storage solutions, providing ample room for all kitchen essentials.



STONE OPTION 1



SAND OPTION 1





ROOFTOP PATIO



LOBBY

## An Intimate Community Among Neighbours

The highly curated amenity spaces at Weston Place are designed by CHIL Interior Design, known for creating immersive hotel experiences. These indoor and outdoor enclaves serve as sophisticated extensions of your home, enriching your lifestyle with value and variety.

A sense of grandeur greets you as you walk into the double-height lobby of the building. The engaging library lounge exudes warmth and is a cozy room for games and reading. Double doors open to a community garden and lawn area that is perfect for a friendly bocce match. Choose from two shared rooftop patios for your entertainment or relaxation needs — these spaces offer captivating vantage points of Burrard Inlet and the North Shore Mountains.



LIBRARY LOUNGE





SUITE 02

C1

2 Bedroom + Family, 2 Bath

Interior: 1,288–1,303 SF  
Exterior: 256–549 SF  
Total: 1,544–1,837 SF

SUITE 01

B1

2 Bedroom, 2 Bath

Interior: 1,010–1,019 SF  
Exterior: 96–314 SF  
Total: 1,106–1,333 SF

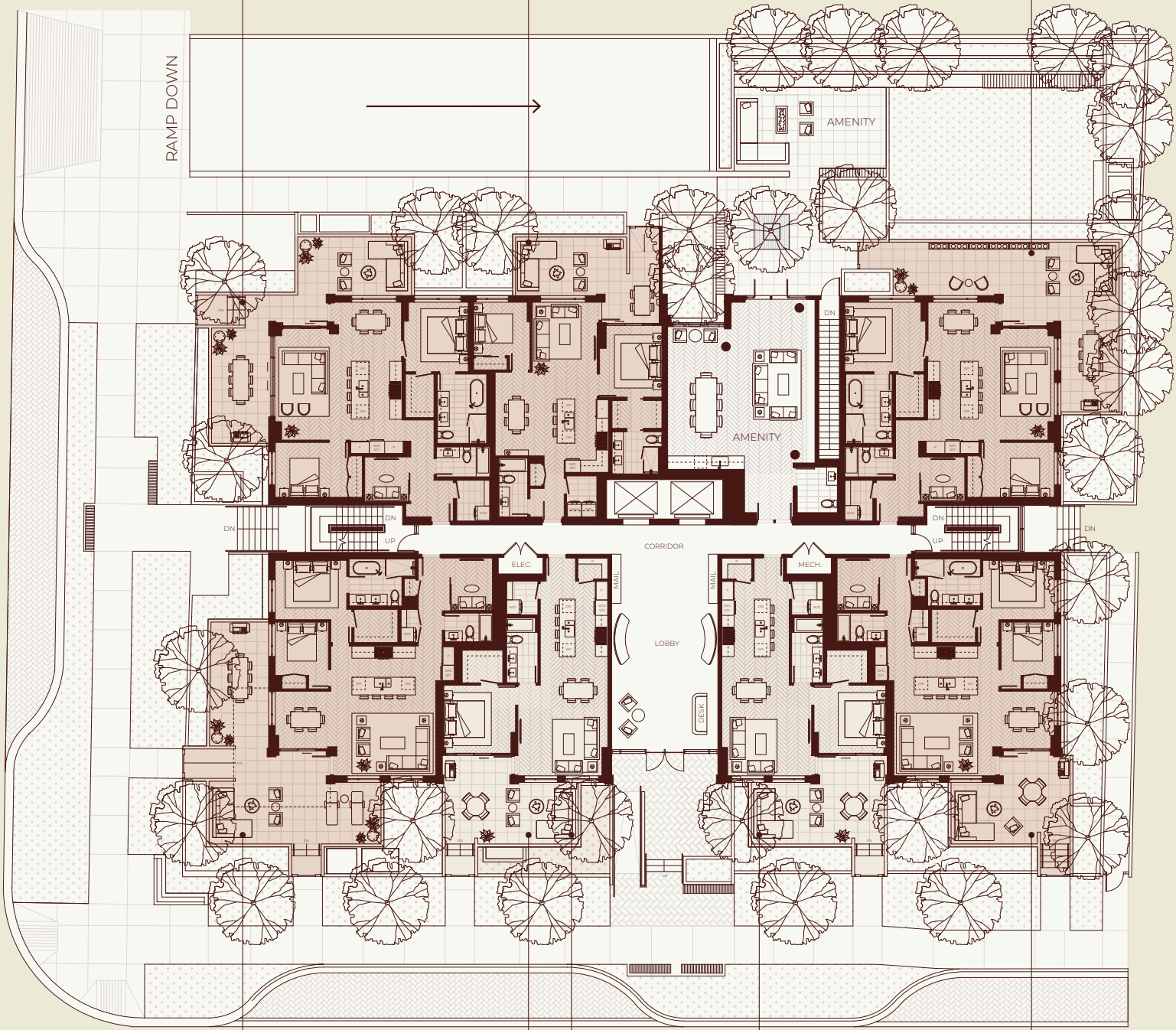
SUITE 07

C1a

2 Bedroom + Family, 2 Bath

Interior: 1,282–1,324 SF  
Exterior: 127–678 SF  
Total: 1,409–2,002 SF

22ND STREET



SUITE 03

C2

2 Bedroom + Family, 2 Bath

Interior: 1,252–1,276 SF  
Exterior: 201–727 SF  
Total: 1,465–1,979 SF

SUITE 04

A1

1 Bedroom, 1 Bath

Interior: 858–863 SF  
Exterior: 104–339 SF  
Total: 962–1,202 SF

SUITE 05

A1a

1 Bedroom, 1 Bath

Interior: 859–861 SF  
Exterior: 101–342 SF  
Total: 962–1,201 SF

SUITE 06

C2a

2 Bedroom + Family, 2 Bath

Interior: 1,252–1,277 SF  
Exterior: 105–318 SF  
Total: 1,366–1,577 SF

GORDON AVENUE

LEVEL 1











SUITE 01  
SPH 1

2 Bedroom + Family, 2.5 Bath

Interior: 1,371 SF  
Exterior: 263 SF  
Total: 1,634 SF

SUITE 06  
SPH 6

2 Bedroom + Family, 2 Bath

Interior: 1,184 SF  
Exterior: 199 SF  
Total: 1,383 SF

SUITE 05  
SPH 5

2 Bedroom + Family, 2.5 Bath

Interior: 1,362 SF  
Exterior: 246 SF  
Total: 1,608 SF

22ND STREET



SUITE 02  
SPH 2

2 Bedroom + Family, 2.5 Bath

Interior: 1,484 SF  
Exterior: 252 SF  
Total: 1,736 SF

SUITE 03  
SPH 3

2 Bedroom + Family, 2 Bath

Interior: 1,214 SF  
Exterior: 161 SF  
Total: 1,375 SF

SUITE 04  
SPH 4

2 Bedroom + Family, 2.5 Bath

Interior: 1,485 SF  
Exterior: 273 SF  
Total: 1,758 SF

LEVEL 7

GORDON AVENUE





## AN ENVIABLE WEST VANCOUVER ADDRESS

- Located directly across from the West Vancouver Community Centre
- 57 “right sized” 1, 2 and 3 bedroom concrete homes
- Walking distance from the seawall and daily conveniences, such as shops, cafés, and restaurants
- Refined West Coast modern architecture

## MEANINGFUL AMENITIES

- Lobby with seating areas and double-height ceiling
- A building concierge offers package acceptance services and is available to assist with daily needs
- Outdoor landscaped community lawn and seating area with firepit
- Choose from two shared rooftop patios for your entertainment and relaxation needs:
  - The north-facing terrace welcomes you with panoramic mountain vistas and intimate seating spaces
  - The south-facing terrace showcases a captivating view of Burrard Inlet, complemented by an outdoor kitchen and barbecue station
- A library/social lounge features a kitchenette, fireplace, exquisite bespoke bookshelves, and direct access to an outdoor terrace for all of life's larger gatherings
- Resort-like corridors with custom carpentry and ambient lighting
- EV-capable parking
- A dedicated car wash and detailing area for comprehensive vehicle cleaning
- A well-equipped workshop/repair station for various DIY projects
- Ample bike lockers and storage with access to power for electric bikes
- Individual drywalled storage lockers offer extra space and ample possibilities for keeping belongings private and organized

## FINELY CRAFTED INTERIORS

- Choose from two colour palettes, Sand and Stone, each with two cabinetry finish options
- Suite entries boast stunning millwork surrounds with solid-core doors, each accentuated by individual wall sconces that illuminate 3D bronze suite numbers
- Brushed-oak herringbone engineered hardwood flooring throughout living areas and bedrooms
- Overheight 9' ceilings lend an airy and spacious ambience
- Expansive double-glazed windows to optimize natural light
- Automated roller blinds in living rooms for ultimate convenience
- Primary bedrooms spacious enough for a king bed
- Generous closets in primary bedrooms for favourite ensembles
- Highly functional laundry station:
  - Dedicated shelving and storage for all laundry needs
  - Full-sized LG front-loading washing machine and dryer
  - Built-in hang-to-dry compartment
- Dual air conditioning and heating system for perfect temperature control
- Balconies come complete with a natural gas hookup
- Sophisticated, high-touch interior design by award-winning CHIL Interior Design
- Landscaping by award-winning Hapa Collaborative
- Architecture by award-winning Merrick Architecture

## REFINED AND FUNCTIONAL KITCHENS

- Wood-finished kitchen cabinetry with stylish satin-nickel or brushed-gold pulls, plus:
  - Full-sized pantry
  - Soft-close function on all drawers and doors
  - Display shelving for cherished items
  - Under-cabinet task lighting for late-night snacks
  - Custom-fitted cutlery organizer
  - Integrated garbage and recycling system
- Quartz stone countertops, backsplash, and island with waterfall edges
- Kohler gooseneck faucet with pull-down spray
- Oversized 36" undermount dual sink
- Top-of-the-line kitchen appliance package:
  - 36" fully integrated Sub-Zero refrigerator and freezer
  - 24" fully integrated Sub-Zero beverage refrigerator
  - 36" Wolf gas cooktop with stainless steel finishes
  - 30" Wolf built-in oven
  - 30" Wolf transitional speed oven
  - 36" Faber pullout hood fan
- 24" Bosch 300 Series fully integrated energy-efficient dishwasher

## SERENE SECOND BATHROOMS

- Large-format 12" x 24" accent wall and floor tile
- Underfloor heating for cold winter days
- Custom vanity with quartz stone counters and undermount sink
- Soft-close drawers offer ample storage for personal items
- Integrated tub and spacious shower to wash the day away
- Kohler faucets and fixtures are sleek and refined
- Kohler Persuade Curv Comfort Height toilet

## EXQUISITE ENSUITE BATHROOMS

- Large-format 12" x 24" accent wall and floor tile
- Underfloor heating for cold winter days
- Custom double vanity with quartz stone counters and undermount sinks
- Kohler sink faucets are sleek and refined
- Large soft-close drawers offer ample storage for personal items
- Dual mirrored medicine cabinets and display shelving with integrated lighting
- Frameless glass shower with elegant niche for products
- Kohler rain shower head and hand-held wand
- Stand-alone tub with free-standing Kohler faucet and hand-held shower wand offer the experience of a spa in the comfort of your home
- Kohler Persuade Curv Comfort Height toilet

## PEACE OF MIND

- Building security system, including video intercom
- Fob access to lobby, elevators, parking, and storage areas for added safety
- Secure bike storage
- Comprehensive warranty protection for peace of mind:
  - 2-year warranty for materials
  - 5-year warranty for building envelope
  - 10-year warranty for structural defects



# A Team Deeply Connected to the North Shore

Two established and like-minded developers have come together to create a considered home experience that elevates daily living. With a shared commitment to community, quality, and the North Shore, collaboration was a natural choice. It is rare to find this combination of expertise dedicated to each individual home, which is what makes Weston Place one of a kind..

## DARWIN



### BUILDING STRONGER COMMUNITIES

Founded on the North Shore in 1987, Darwin thoughtfully shapes the region's communities with landmark developments. The local developer's vast construction experience includes Dundarave Village Point, West Vancouver Library, The Shipyards, and Lynn Valley Village — destinations that exude character and quality. As a developer, Darwin works closely with the community to ensure that homes elegantly integrate with the existing fabric of the neighbourhood. They are true stewards of community — and always will be. Darwin is committed to building for tomorrow.

[Learn more at darwin.ca](https://darwin.ca)

## Citimark



### WE BUILD WITH A PURPOSE

With decades of experience developing multi-family projects all over Metro Vancouver, the Citimark team is committed to delivering well designed and well built homes that cater to the needs of families now and in the future. Citimark's team has long focused on the North Shore, having successfully completed many projects including the 15 West high-rise and the Belle Isle and Ebb & Flow townhomes. Our Commitment. Your Home.

[Learn more at citimark.ca](https://citimark.ca)

# Renowned Design Leaders Collaborate to Create

Two award-winning design firms are brought together to collaborate in the creation of a truly special living experience.



### MERRICK ARCHITECTURE

Merrick Architecture was established in Vancouver, British Columbia in 1984 as a practice focused on the creation of original and place-sensitive architecture. Today, the practice continues to be inspired by the spirit of the Northwest Coast, celebrating values of community, humanity, and sustainability.

[merrickarch.com](https://merrickarch.com)



### CHIL INTERIOR DESIGN

Part of global design firm B+H, CHIL Interior Design's residential approach is inspired by their design of unparalleled guest experiences for luxury hotels. Their reputation is built on guiding principles of careful research and informed design.

[childesign.com](https://childesign.com)



# Finely Crafted Living

WESTONPLACE.CA

604.655.3895

**DARWIN**  **Citimark** Sales by **M A G N U M**

The developer makes no representations or warranties and reserves the right to make changes and modifications to the information contained herein. Any information contained herein including, without limitation, maps, views, photography, development model and digital renderings of architecture and interiors are for illustration purposes only and may not be relied upon. Floor plans, layouts and finishes are subject to change. Weston Place is currently not an offering for sale. Such offering may only be made with a disclosure statement. E.&O.E.