

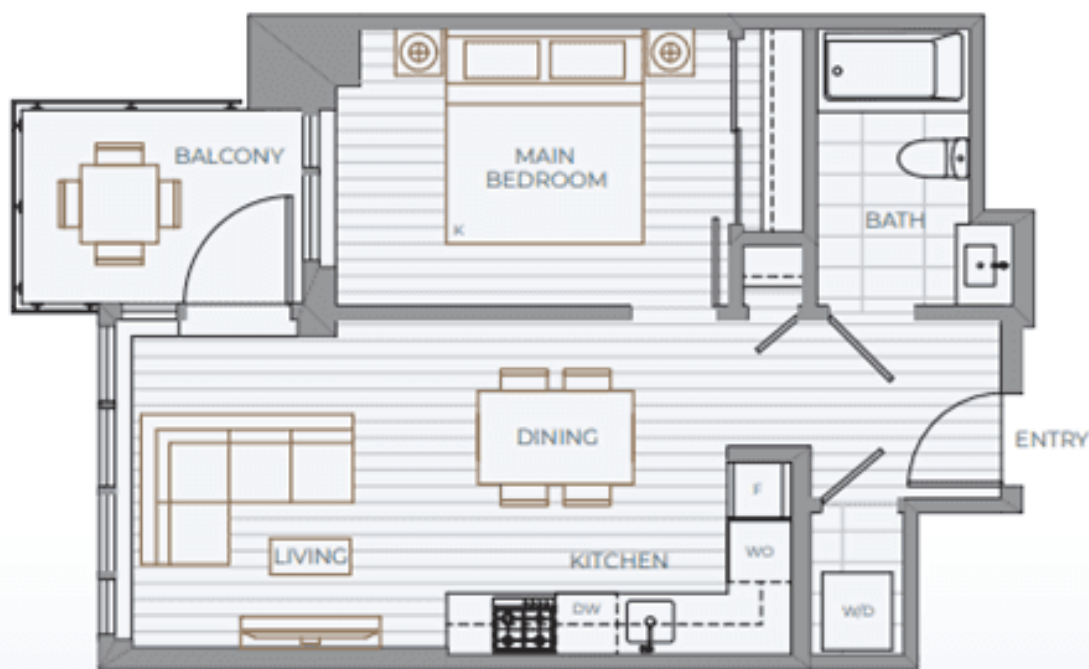
1 Bedroom + 1 Bath

Orientation: West or East

Interior SF: 530

Balcony/Patio SF: 53

TOTAL SF: 583



Adaptable Dwelling Unit

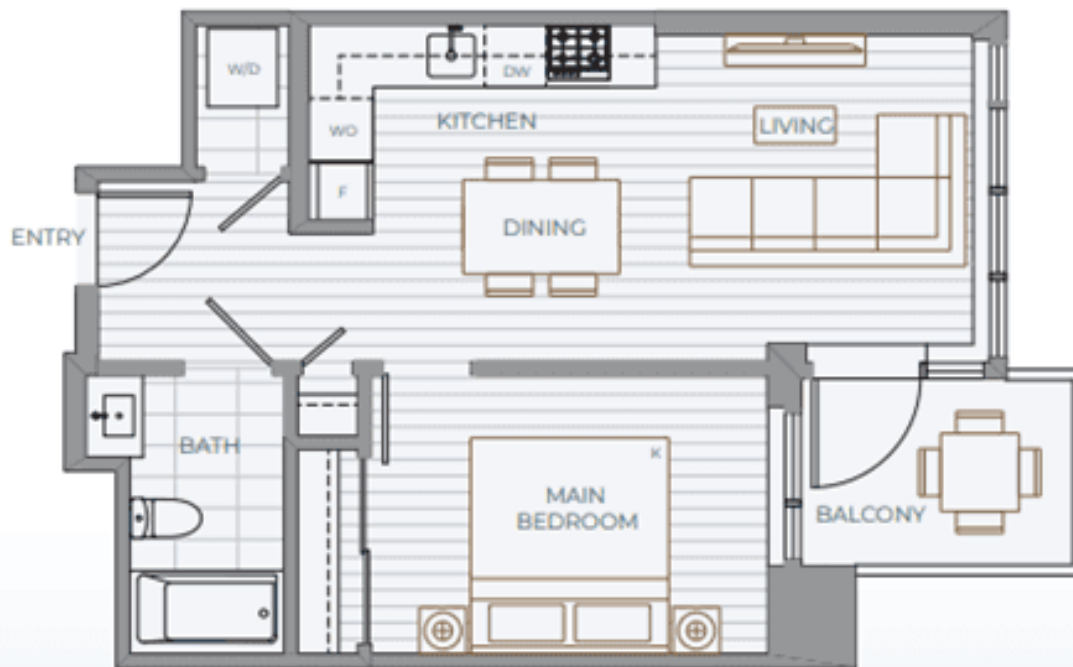
1 Bedroom + 1 Bath

Orientation: East

Interior SF: 533

Balcony/Patio SF: 53

TOTAL SF: 586



Adaptable Dwelling Unit

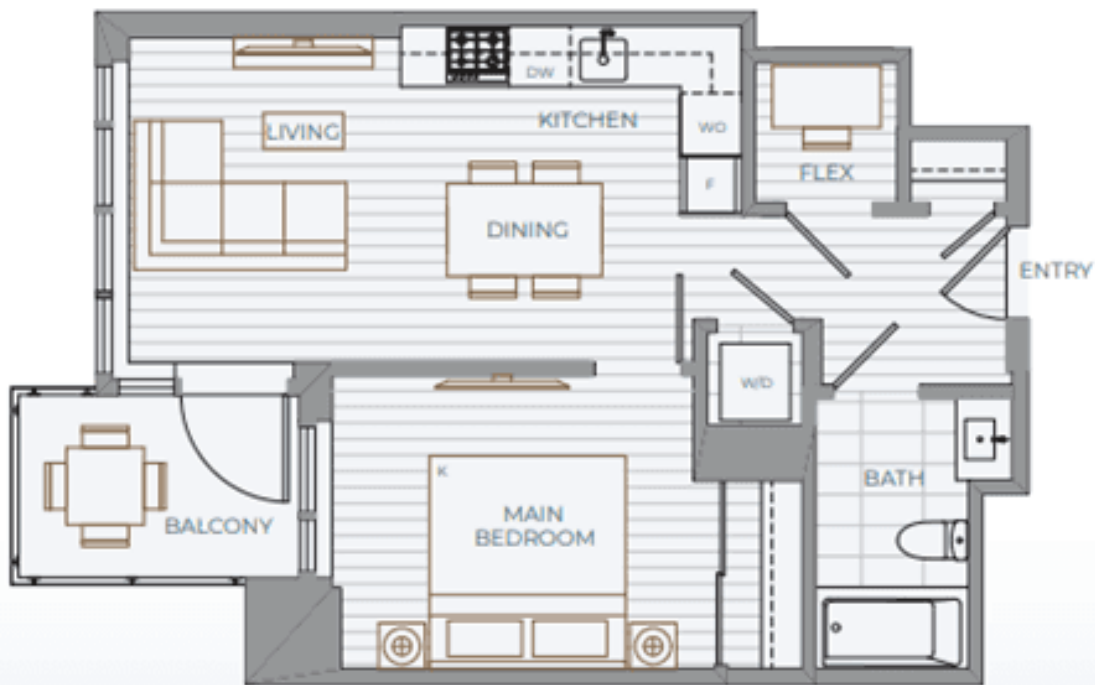
1 Bedroom + 1 Bath + Flex

Orientation: West

Interior SF: 565

Balcony/Patio SF: 54

TOTAL SF: 619



Adaptable Dwelling Unit

1 Bedroom + 1 Bath + Flex

Orientation: North

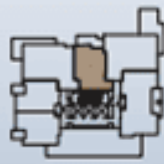
Interior SF: 633

Balcony/Patio SF (Level 2-26): 122

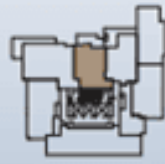
TOTAL SF: 755



LEVEL 4-26



LEVEL 3



LEVEL 2



Adaptable Dwelling Unit

1 Bedroom + 1 Bath + Flex

Orientation: North

Interior SF: 605

Balcony/Patio SF: 164

TOTAL SF: 769



Adaptable Dwelling Unit



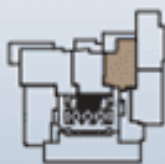
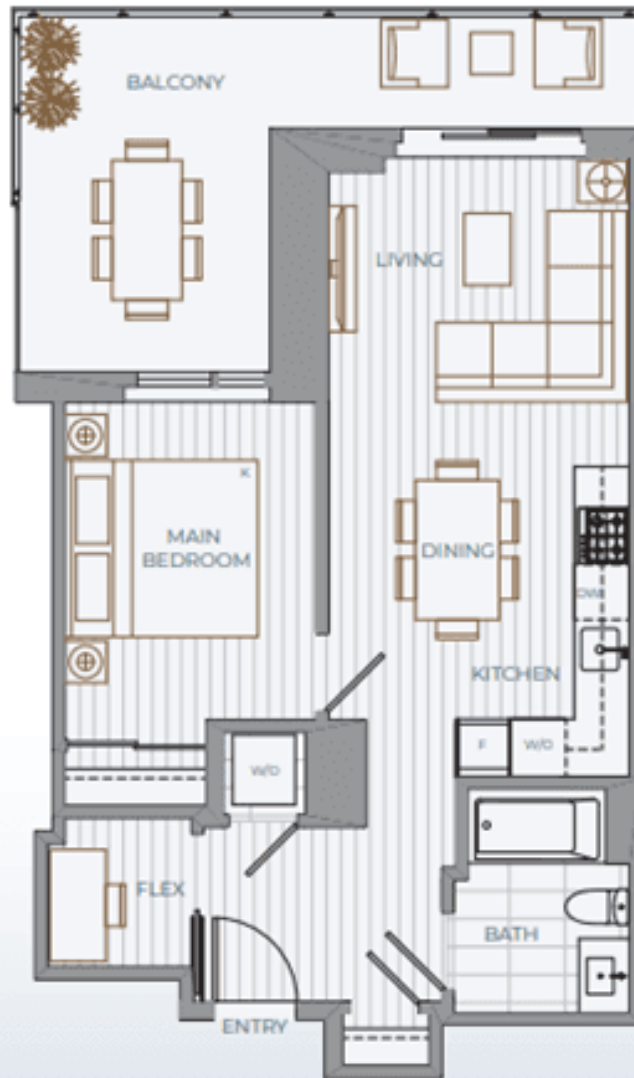
1 Bedroom + 1 Bath + Flex

Orientation: North

Interior SF: 605

Balcony/Patio SF: 164

TOTAL SF: 769



Adaptable Dwelling Unit



2 Bedroom + 2 Bath

Orientation: South East

Interior SF: 850

Balcony/Patio SF: 62

TOTAL SF: 912



LEVEL 28



LEVEL 27



LEVEL 4-26



2 Bedroom + 2 Bath + Flex

Orientation: North West

Interior SF: 907

Balcony/Patio SF (Level 2-3): 190

Balcony/Patio SF (Level 4-29): 106

TOTAL SF: 1,013 - 1,097



Adaptable Dwelling Unit

All sizes and dimensions shown are approximate and may be subject to change. To maintain the standards of this development, the developer reserves the right to make changes and modifications to specifications and materials without notice. Images, floor representations, drawings, floor plans, furniture and TV icons are for illustrative purposes only. BBQ not included. This is not an offering for sale. Any such offer can only be made by way of the prospectus, T & OE. All drawings are a mark trademark of QualEx-Landmark Living Inc. used and designed by QualEx-Landmark Decadent Limited Partnership.

ARTESIA

METROTOWN

HOME TYPE 2B

2 Bedroom + 2 Bath + Flex

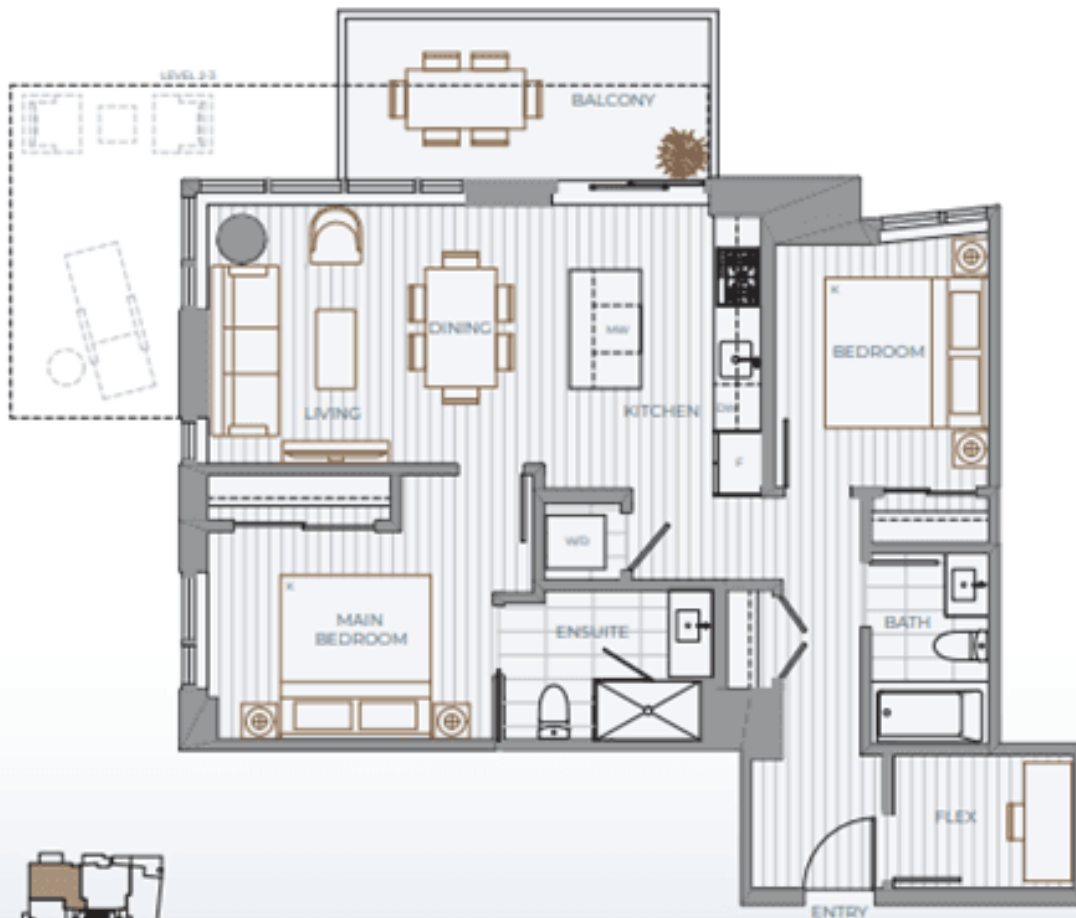
Orientation: North West

Interior SF: 907

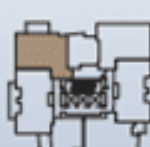
Balcony/Patio SF (Level 2-3): 190

Balcony/Patio SF (Level 4-29): 106

TOTAL SF: 1,013 - 1,097



LEVEL 29



LEVEL 28



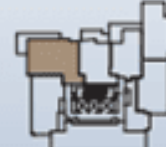
LEVEL 27



LEVEL 4-26



LEVEL 3



LEVEL 2



Adaptable Dwelling Unit

All sizes and dimensions shown are approximate only and are subject to change. To maintain the standards of this development, the developer reserves the right to make changes and modifications to specifications and materials without notice. Images, view representations, drawings (including furniture and TV placement) and digital renderings are for illustrative purposes only. BBQ not included. This is not an offering for sale. Any such offer can only be made by way of disclosure statement. E & C.E. TM denotes one or more trademarks of Qulex Landmark Living Inc. used under license by Qulex Landmark Orchard Limited Partnership.

2 Bedroom + 2 Bath + Flex

Orientation: North East

Interior SF: 907

Balcony/Patio SF (Level 3): 308

Balcony/Patio SF (Level 4-28): 105

TOTAL SF: 1,012 - 1,215



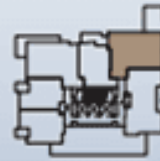
Level 28



Level 27



Level 4-26



Level 3



Adaptable Dwelling Unit

2 Bedroom + 2 Bath + Flex

Orientation: North

Interior SF: 939

Balcony/Patio SF (Level 29): 195

Balcony/Patio SF (Level 30-31): 135

TOTAL SF: 1,074 - 1,134



LEVEL 31



LEVEL 30



LEVEL 29



2 Bedroom + 2 Bath + Den

Orientation: North West

Interior SF: 925

Balcony/Patio SF (Level 30): 254

Balcony/Patio SF (Level 31): 93

TOTAL SF: 1,018 - 1,179



LEVEL 31



LEVEL 30



Jr 3 Bedroom + 2 Bath

Orientation: South East

Interior SF: 925

Balcony/Patio SF (Level 29): 68

Balcony/Patio SF (Level 30-31): 138

TOTAL SF: 993 - 1,063



Jr 3 Bedroom + 2 Bath

Orientation: North East

Interior SF: 915

Balcony/Patio SF (Level 29): 239

Balcony/Patio SF (Level 30-31): 98

TOTAL SF: 1,013 - 1,154.



Jr 3 Bedroom + 2 Bath

Orientation: North East

Interior SF: 915

Balcony/Patio SF (Level 29): 239

Balcony/Patio SF (Level 30-31): 98

TOTAL SF: 1,013 - 1,154



2 Bedroom + 2 Bath + Flex

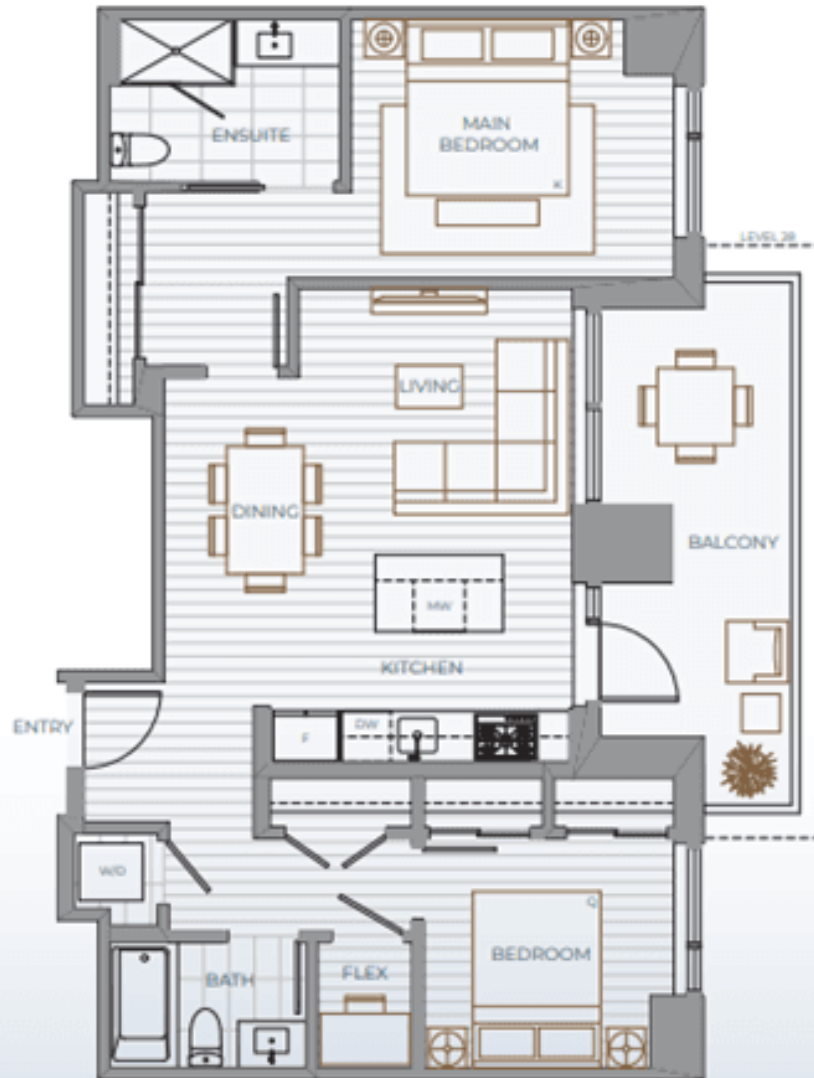
Orientation: East

Interior SF: 910

Balcony/Patio SF (Level 27): 138

Balcony/Patio SF (Level 28): 180

TOTAL SF: 1,048 - 1,090



Adaptable Dwelling Unit

All sizes and dimensions shown are approximate only and are subject to change. To maintain the standards of this development, the developer reserves the right to make changes and modifications to specifications and materials without notice. Images, view representations, drawings (including furniture and TV placement) and digital renderings are for illustrative purposes only. BBQ not included. This is not an offering for sale. Any such offer can only be made by way of disclosure statement. E. & O.E. TM denotes one or more trademarks of Qualex Landmark Living Inc. used under license by Qualex Landmark Orchard Limited Partnership.

Jr 3 Bedroom + 2 Bath

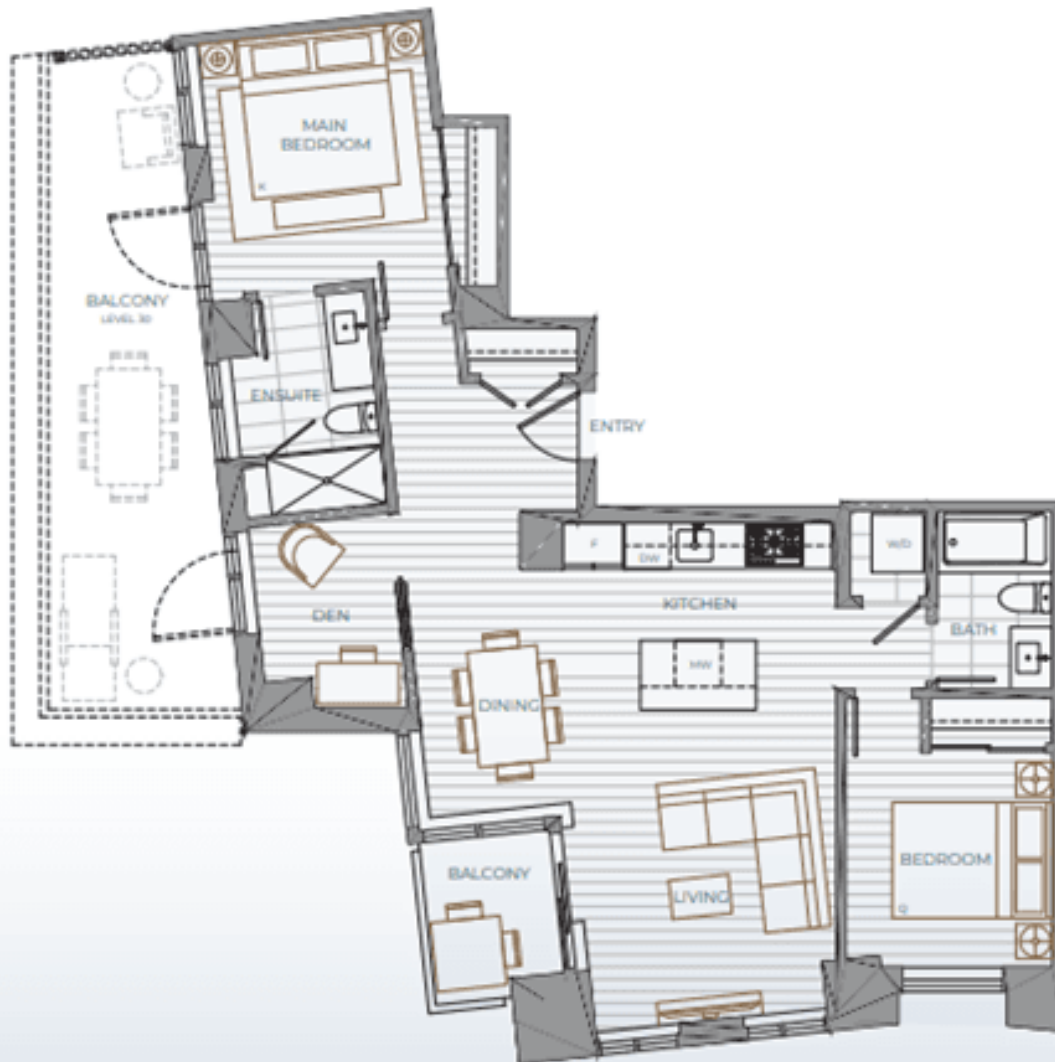
Orientation: South West

Interior SF: 950

Balcony/Patio SF (Level 30): 257

Balcony/Patio SF (Level 31): 38

TOTAL SF: 988 - 1,207



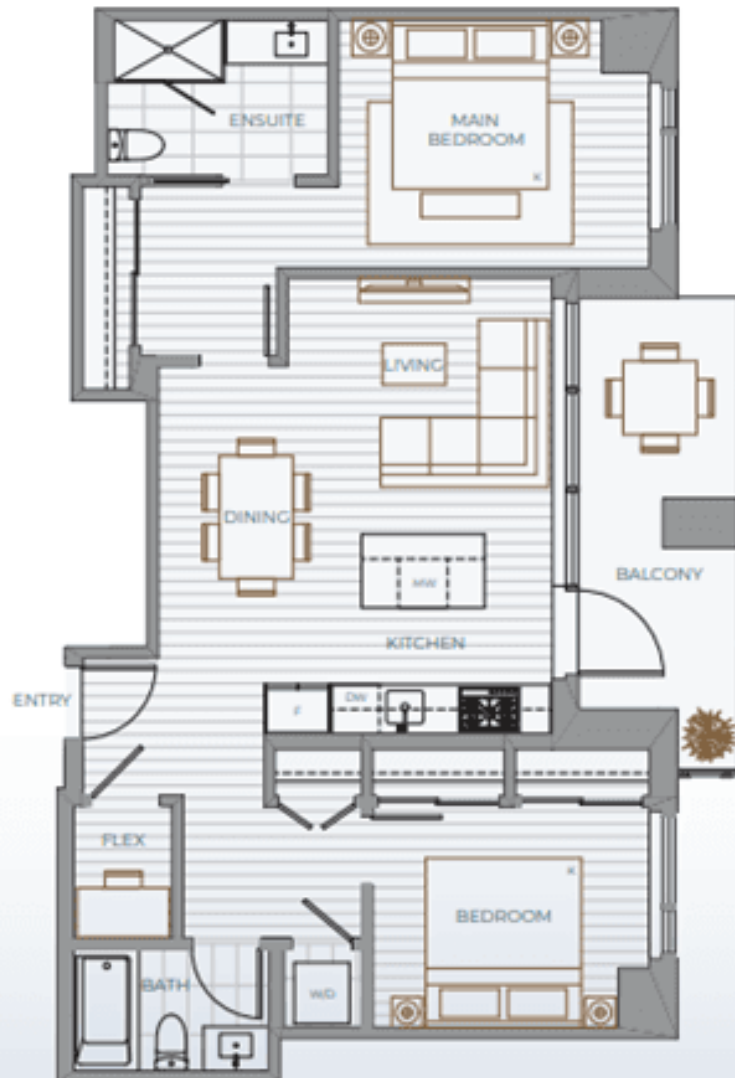
2 Bedroom + 2 Bath + Flex

Orientation: East

Interior SF: 941

Balcony/Patio SF: 121

TOTAL SF: 1,062



LEVEL 3

Adaptable Dwelling Unit



2 Bedroom + 2 Bath + Flex

Orientation: West

Interior SF: 950

Balcony/Patio SF (Level 28): 137

Balcony/Patio SF (Level 29): 156

TOTAL SF: 1,087 - 1,106



LEVEL 29



LEVEL 28



Adaptable Dwelling Unit

1 Bedroom + 1 Bath

Orientation: South West

Interior SF: 497

Balcony/Patio SF: 60

TOTAL SF: 557



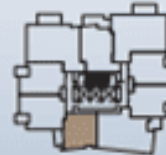
LEVEL 29



LEVEL 28



LEVEL 27



LEVEL 4-26



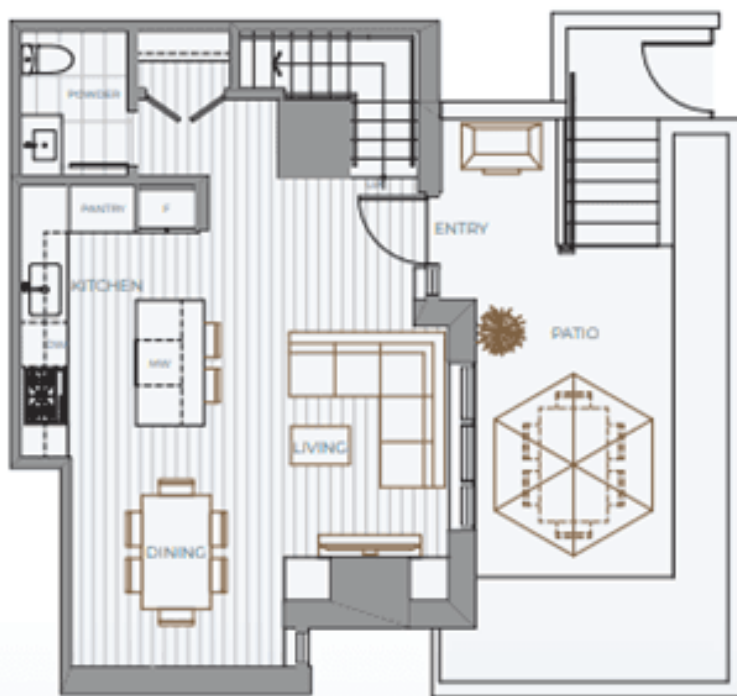
3 Bedroom + 2.5 Bath

Orientation: East

Interior SF: 1,185

Balcony/Patio SF: 185

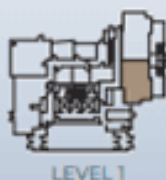
TOTAL SF: 1,370



TOWNHOME LEVEL 1



TOWNHOME LEVEL 2



LEVEL 1



3 Bedroom + 2.5 Bath + Den

Orientation: East

Interior SF: 1,218

Balcony/Patio SF: 211

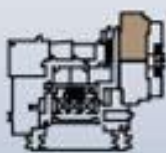
TOTAL SF: 1,429



TOWNHOME LEVEL 1



TOWNHOME LEVEL 2



LEVEL 1

