

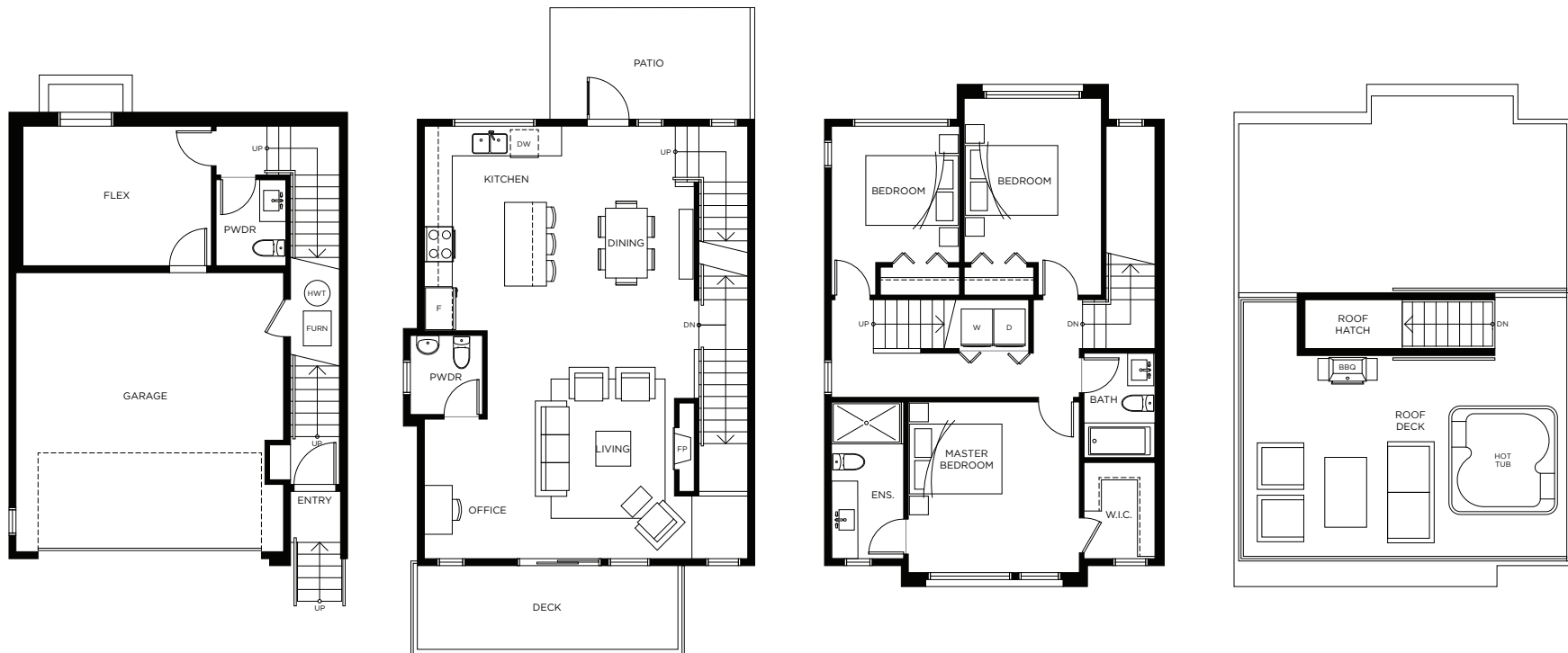


www.ShelterBayLiving.ca

SITE PLAN

PLAN A

3 Bedroom + Flex, 3 Bath
1,927 sf



Basement Level

Main Level

Upper Level

Roof Level

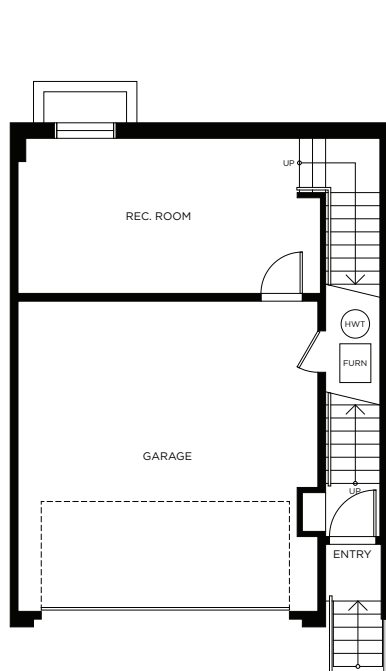


www.ShelterBayLiving.ca

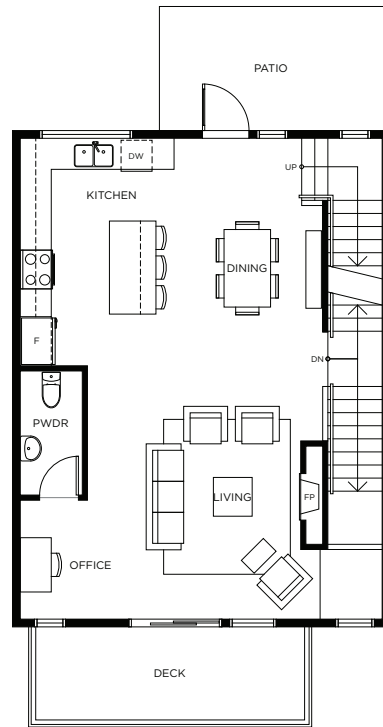
Basement	349 sf
Main Floor	775 sf
Upper Floor	803 sf
TOTAL	1,927 sf
Roof Deck	406 sf

PLAN B

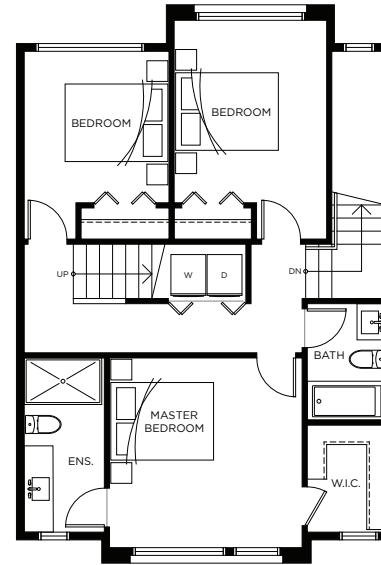
3 Bedroom, 2.5 Bath
1,920 sf



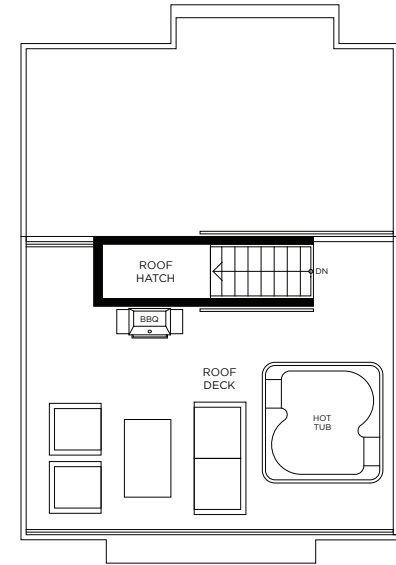
Basement Level



Main Level



Upper Level



Roof Level



www.ShelterBayLiving.ca

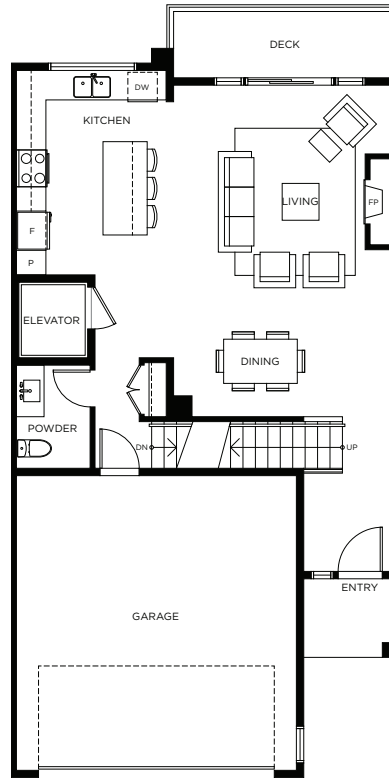
Basement	349 sf
Main Floor	768 sf
Upper Floor	803 sf
TOTAL	1,920 sf
Roof Deck	406 sf

PLAN D

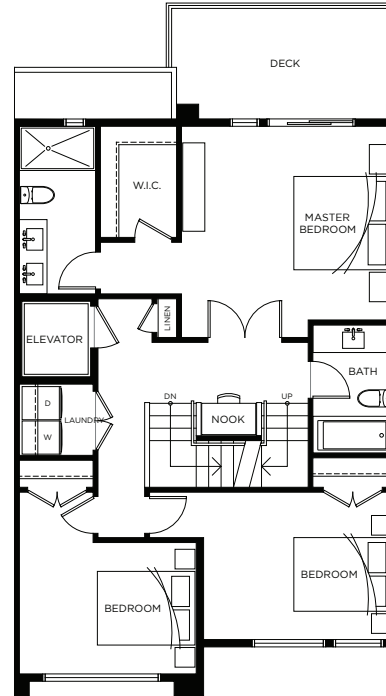
4 Bedroom, 3.5 Bath
2,450 sf



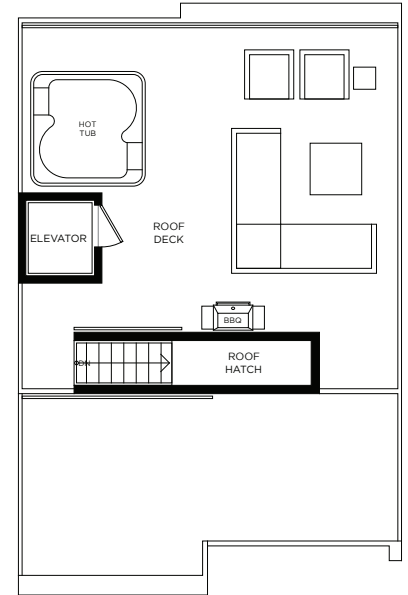
Basement Level



Main Level



Upper Level



Roof Level



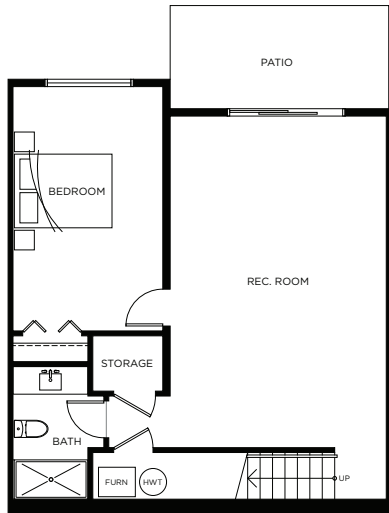
www.ShelterBayLiving.ca

Basement	728 sf
Main Floor	760 sf
Upper Floor	962 sf
TOTAL	2,450 sf
Roof Deck	569 sf

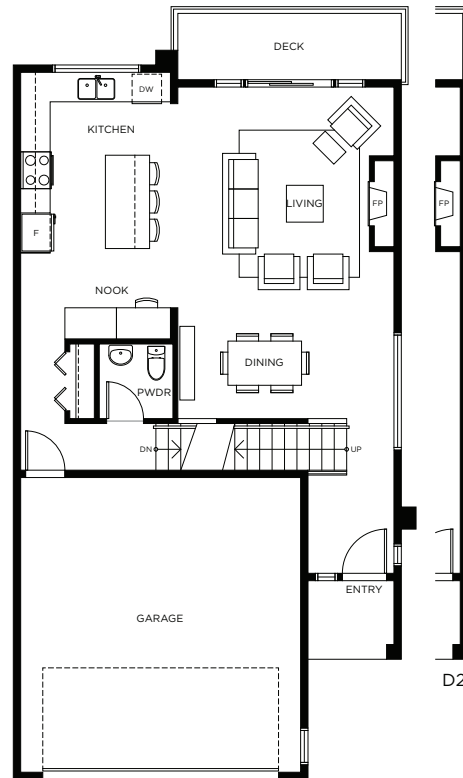
PLAN D3/D2

4 Bedroom, 3.5 Bath

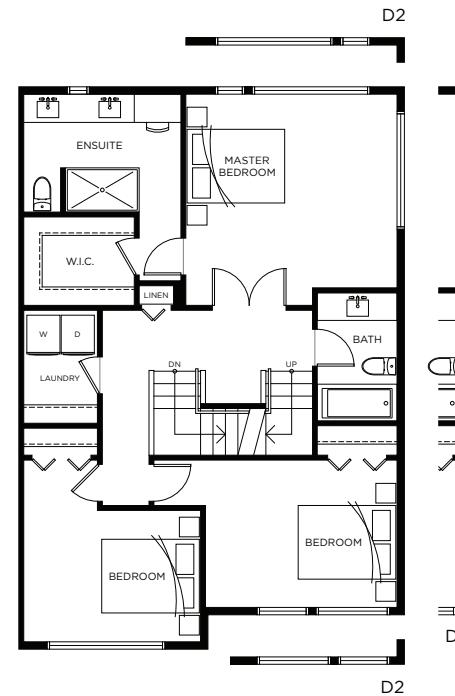
2,458 sf – 2,470 sf



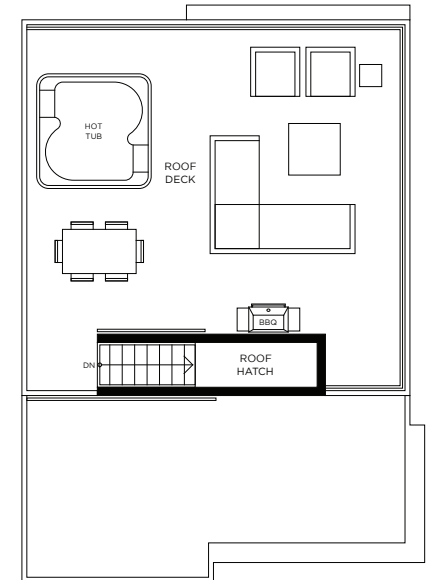
Basement Level



Main Level



Upper Level



Roof Level



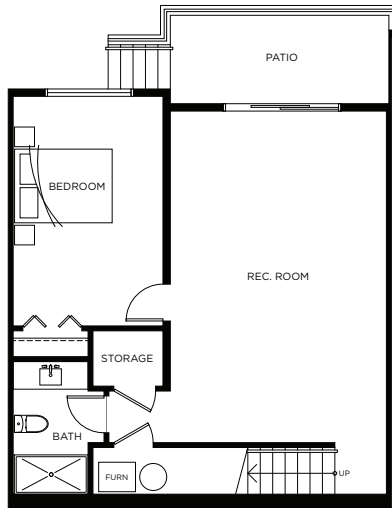
www.ShelterBayLiving.ca

Basement	737 sf
Main Floor	760 – 765 sf
Upper Floor	962 – 968 sf
TOTAL	2,458 – 2,470 sf
Roof Deck	599 – 603 sf

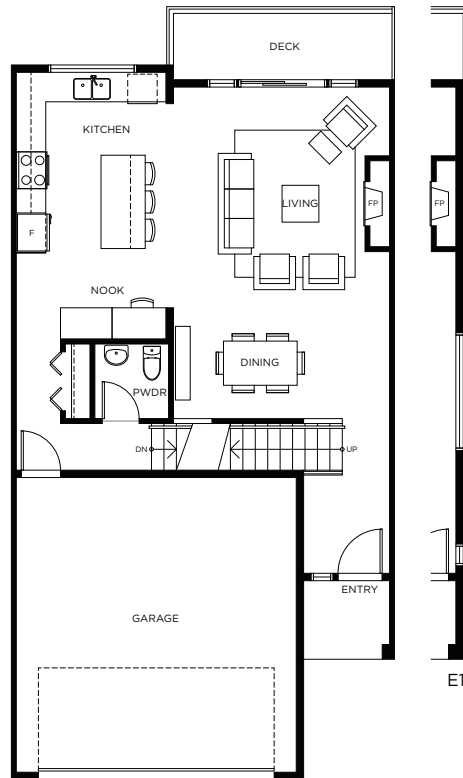
PLAN E/E1

4 Bedroom, 3.5 Bath

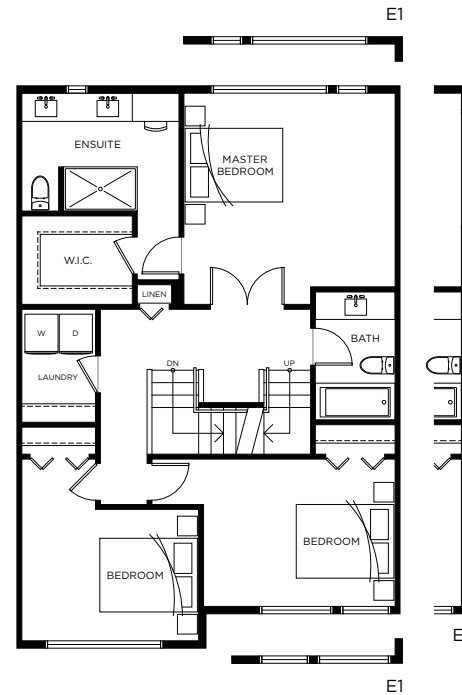
2,447 sf – 2,464 sf



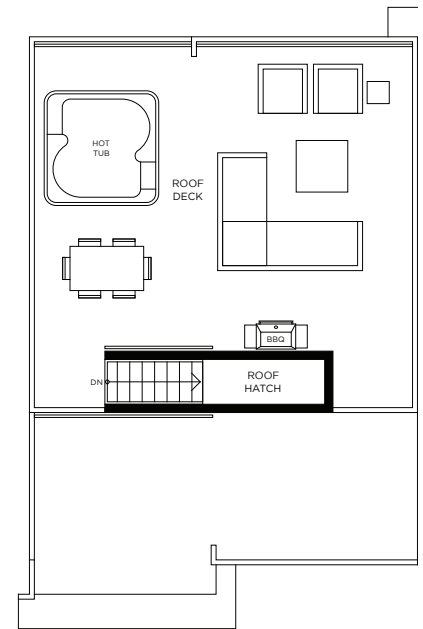
Basement Level



Main Level



Upper Level



Roof Level



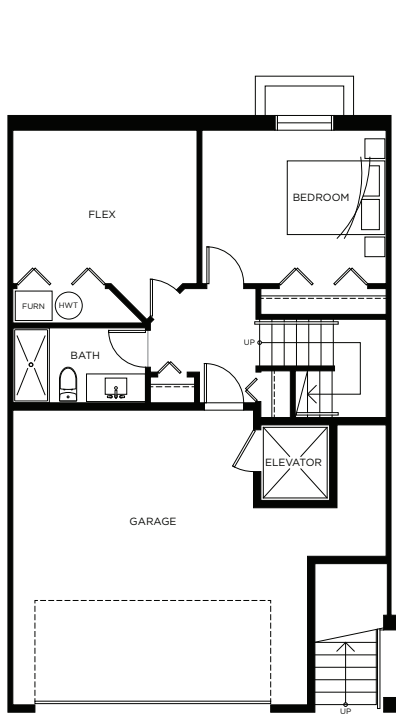
www.ShelterBayLiving.ca

Basement	726 – 731 sf
Main Floor	760 – 765 sf
Upper Floor	962 – 968 sf
TOTAL	2,447 – 2,464 sf
Roof Deck	599 – 603 sf

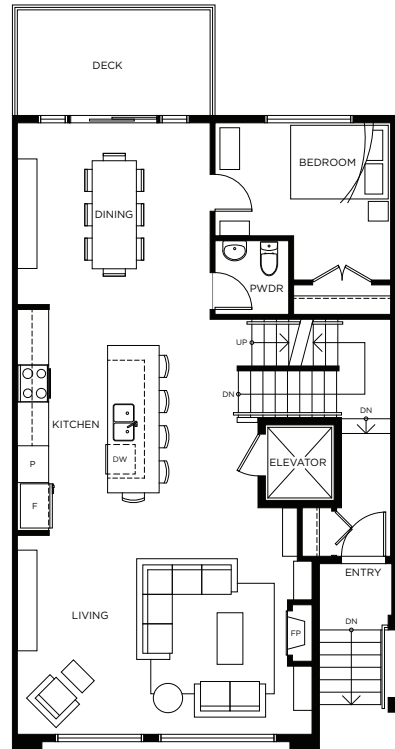
PLAN U1 (Elevator)

5 Bedroom + Flex, 3.5 Bath

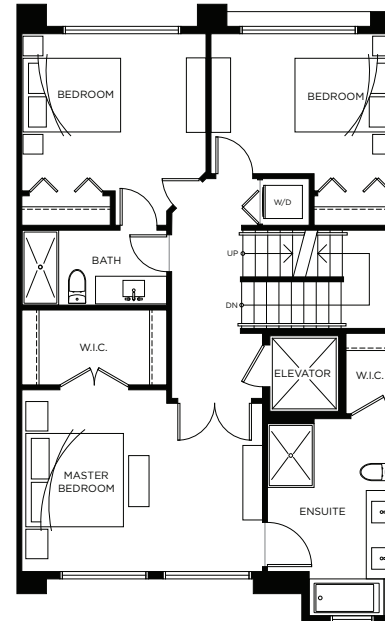
2,567 sf



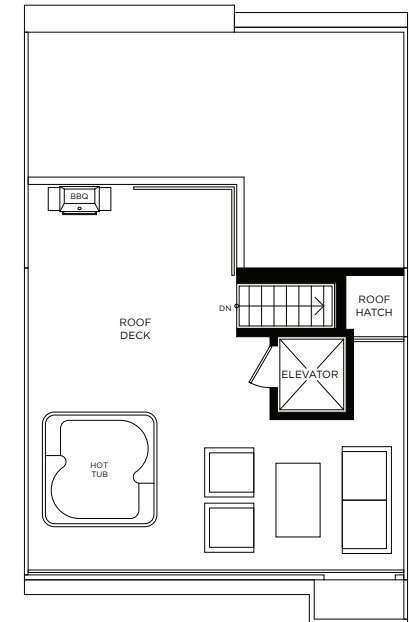
Basement Level



Main Level



Upper Level



Roof Level

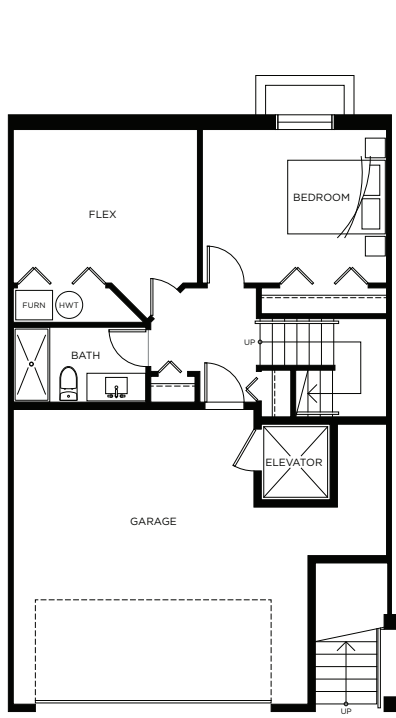


www.ShelterBayLiving.ca

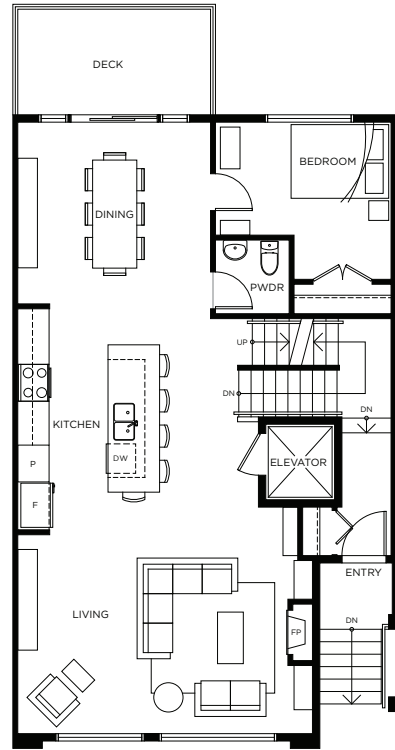
Basement	5291 sf
Main Floor	1,043 sf
Upper Floor	995 sf
TOTAL	2,567 sf
Roof Deck	546 sf

PLAN U2 (Elevator)

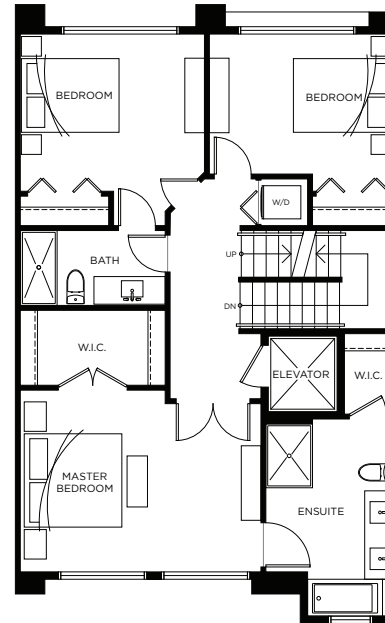
5 Bedroom + Flex, 3.5 Bath
2,582 sf



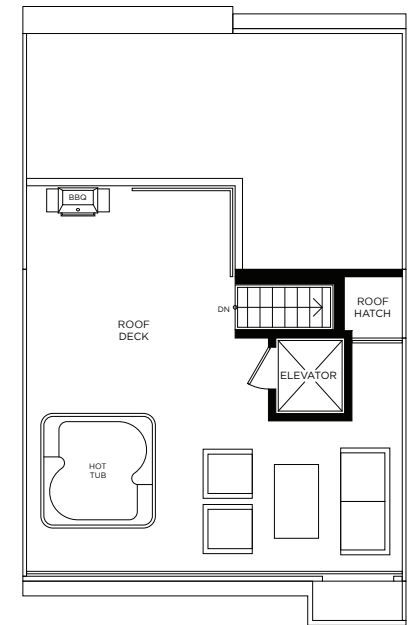
Basement Level



Main Level



Upper Level

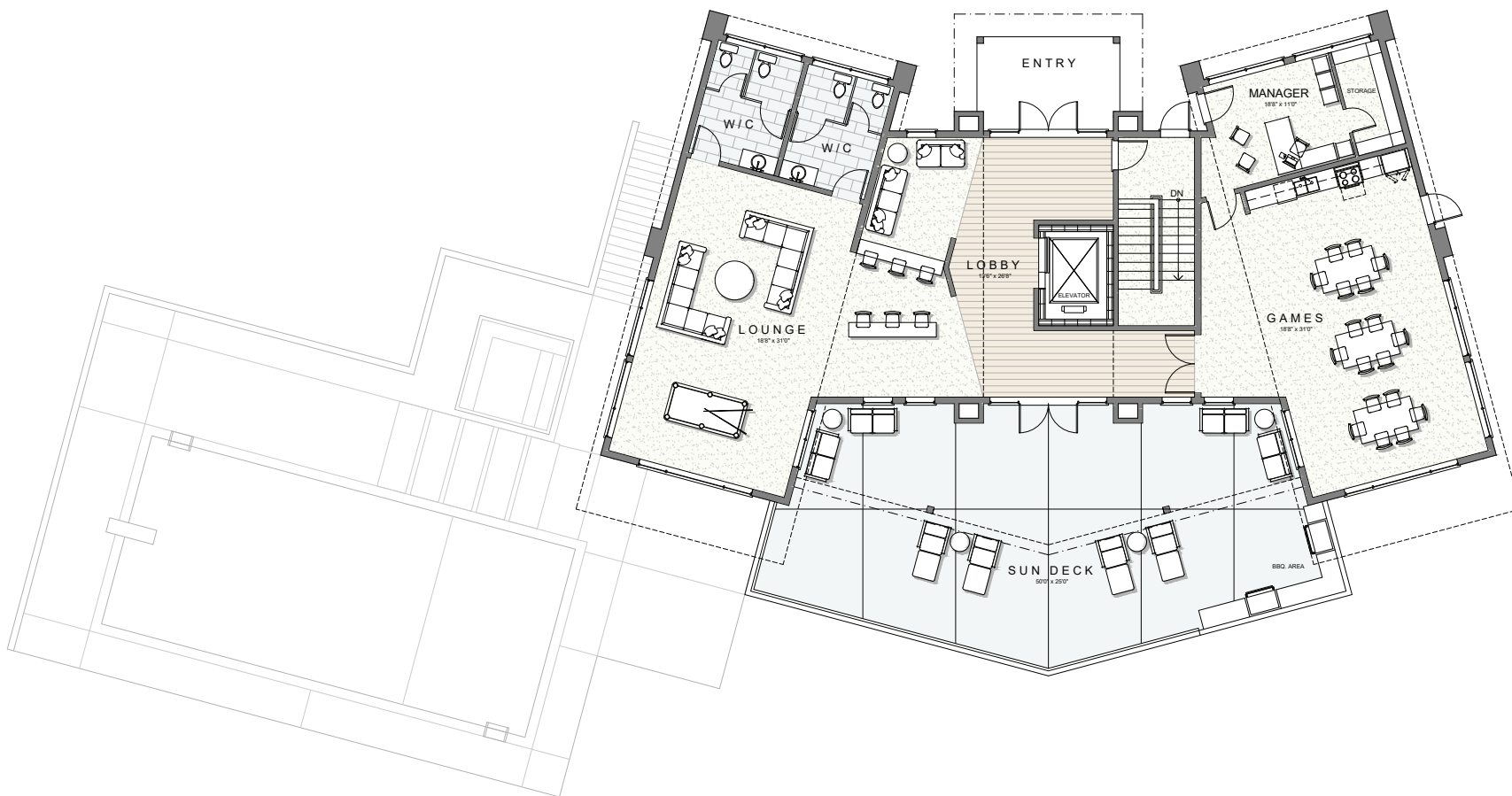


Roof Level



www.ShelterBayLiving.ca

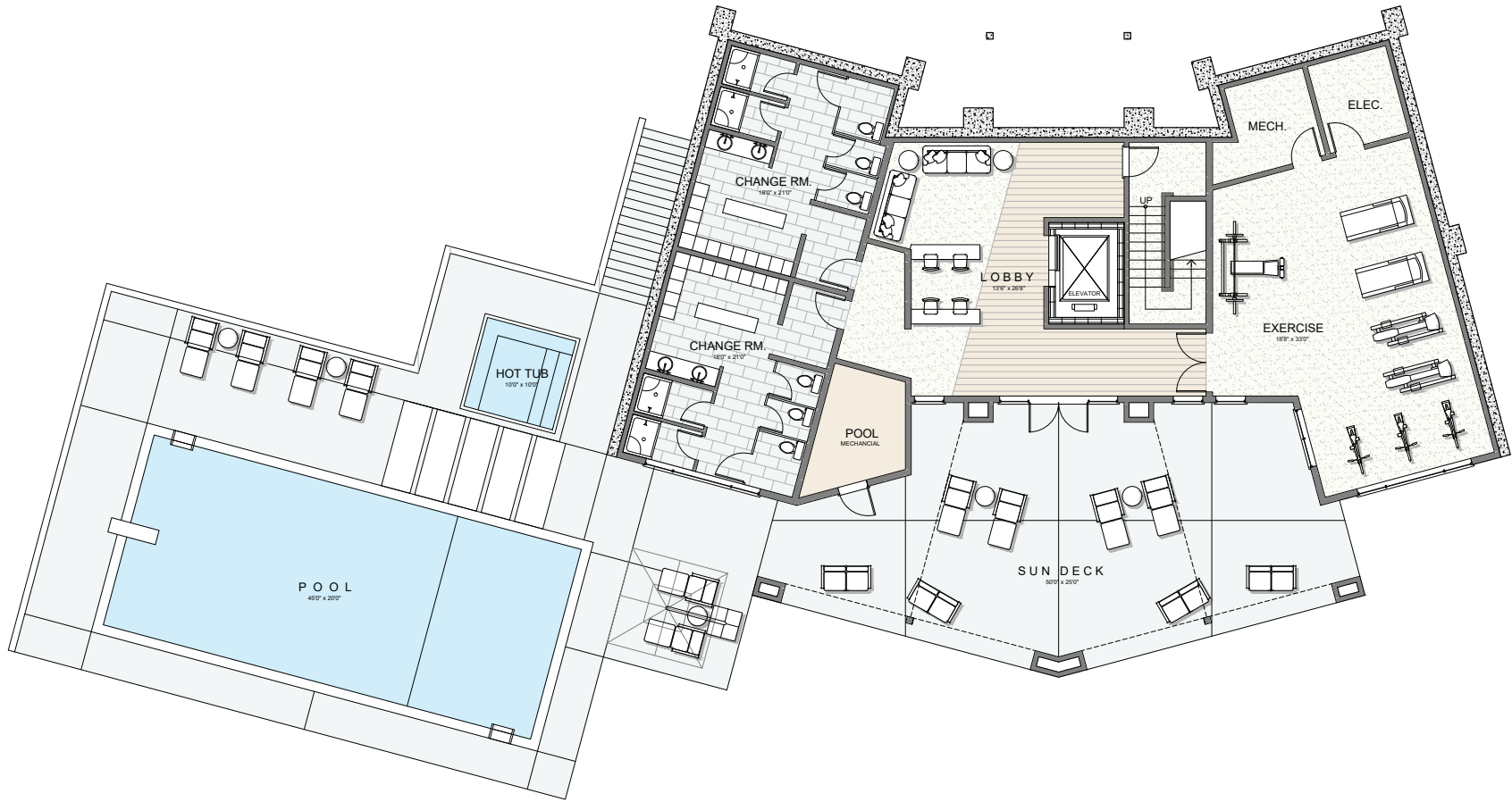
Basement	532 sf
Main Floor	1,048 sf
Upper Floor	1,002 sf
TOTAL	2,582 sf
Roof Deck	549 sf



www.ShelterBayLiving.ca

**AMENITY
BUILDING**
Lounge Level





www.ShelterBayLiving.ca

**AMENITY
BUILDING**
Pool Level

