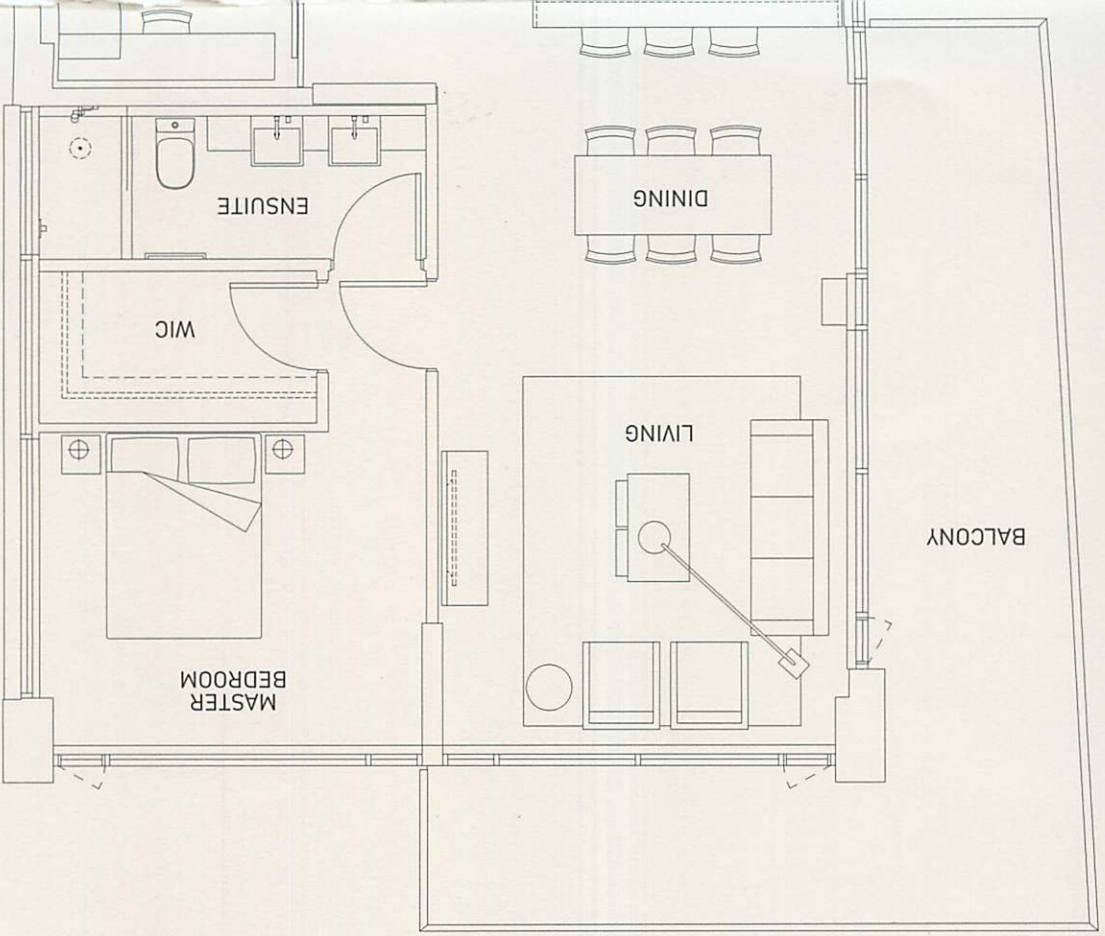


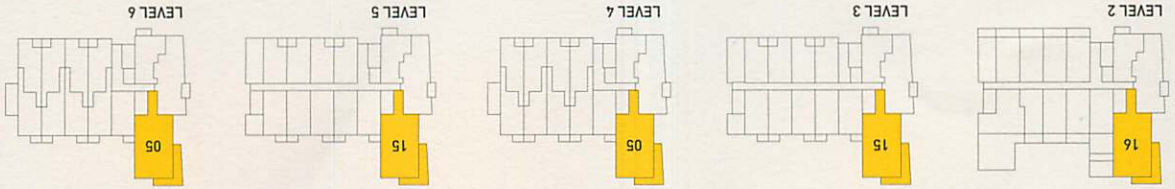
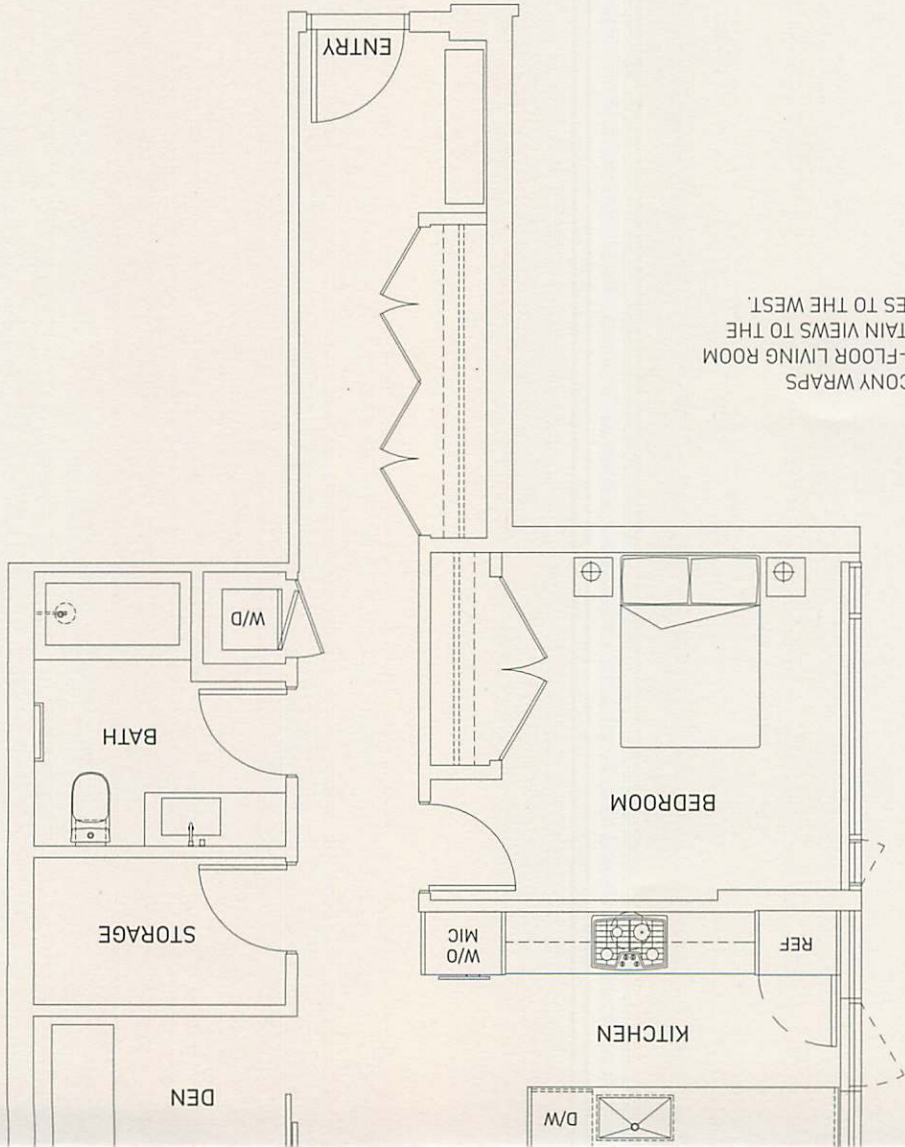
THIS TWO-BEDROOM PLUS DEN CORNER SUITE OFFERS CONSIDERABLE LIVING SPACE AND ENVIABLE DAYLIGHT EXPOSURE.

COLLECTION  
45

- \*SUITE 216 FEATURES A ROOF DECK OFF MASTER BEDROOM
- \*SUITE 605 HAS AN INTERNAL STAIRCASE TO THE ROOFTOP DECK WHERE THE DEN IS LOCATED



A LARGE PRIVATE BALCONY WRAPS AROUND THE SECOND-FLOOR LIVING ROOM FOR STUNNING MOUNTAIN VIEWS TO THE NORTH AND CITYSCAPES TO THE WEST.



In our continuing effort to improve and maintain the high standard of the Collection 45 development, the developer reserves the right to modify or change plans, specifications, features and prices without notice. Materials may be substituted with equivalent or better at the developer's sole discretion. All dimensions and sizes are approximate and are based on preliminary strata survey measurements. As reverse plans occur throughout the development please see architectural plans. Renderings are an artist's conception and are intended as a general reference only. Note deck and patio sizes and shapes vary. Please refer to disclosure statement for specific offering details. E. & O. E.