

EVAN

ZND&SCOTIA

features

welcome home

- modern 6-storey concrete midrise tower designed by award-winning shift architecture
- patios and/or balconies in all homes
- over height ceilings in homes
- frosted sliding glass doors in one bedrooms
- bike friendly facility
- comprehensive 2-5-10 year home warranty
- explore your creative side with workshop and artist studio for use by all residents
- relax in the lush courtyard

interior finishes

- contemporary designer colour scheme
- premium wide-plank laminate flooring throughout living, dining and bedroom areas
- painted flat panel interior doors
- flat profile painted baseboards and door casings
- high efficiency energy star front load washer and dryer
- multiple outlets for high speed internet and digital media

kitchens

- energy efficient european designed appliance package includes:
- premium fully integrated bottom mount refrigerator
- 24 inch stainless steel convection electric wall oven
- 24 inch ceramic top electric cook top
- fully integrated dishwasher
- 24 inch under cabinet slide out hood fan
- mid-size stainless steel microwave oven
- in-sink disposal
- sleek polished composite countertops
- contemporary white gloss lacquer upper cabinets
- custom flat panel graphite teak vertical grain laminate lower cabinets with stainless steel pulls
- full height tile backsplash
- professional restaurant-style kitchen faucet with pull down spray
- zero radius stainless steel under mounted sink
- convenient soft close mechanisms for all kitchen cabinet doors
- functional under cabinet puck lights to illuminate work space

bathrooms

- sleek polished composite countertops with 4 inch backsplash
- flat-panel graphite teak vertical grain laminate cabinetry with stainless steel pulls
- convenient soft close mechanisms for all bathroom cabinet doors
- contemporary large format 12 " by 24 " porcelain tile floors
- white 6" by 24" glazed porcelain tub surround
- clean and simple contemporary surface mounted basin with chrome faucet
- high-efficiency water conserving toilet
- contemporary minimalistic tub with single lever pressure balanced shower control
- polished chrome bathroom accessories

safety and security

- solid reinforced concrete construction offering superior durability, ease of maintenance and quiet living
- electronic key fob controlled access at all building entry points
- controlled underground parkade with secured entry gate, ample lighting and closed circuit camera
- building entry equipped with enter-phone and closed circuit camera
- restricted fob access to each floor
- well-lit storage and bike rooms with motion sensors
- solid wood suite entry door with anodized lock and peep hole
- state of the art fire protection including sprinklers and smoke detectors in every suite

sustainability

- designed with a focus on sustainability
- low flow fixtures and water efficient landscaping minimizes water use
- high efficiency energy star front loading washer & energuide rated dryer and energy - efficient appliances reduce energy and water usage
- low voc paints, adhesives and sealants used throughout building to improve indoor air quality
- ample glazing and operable windows provide plenty of natural light and fresh air for healthy and inspired living spaces
- recycling and garbage collection facilities make it easy for you to reduce, reuse and recycle
- local and recycled products used wherever possible to help reduce transportation costs, lower vehicle emissions and help support our local economy
- conveniently located within walking distance of shops, dining and entertainment, with bike lockers to reduce your carbon footprint

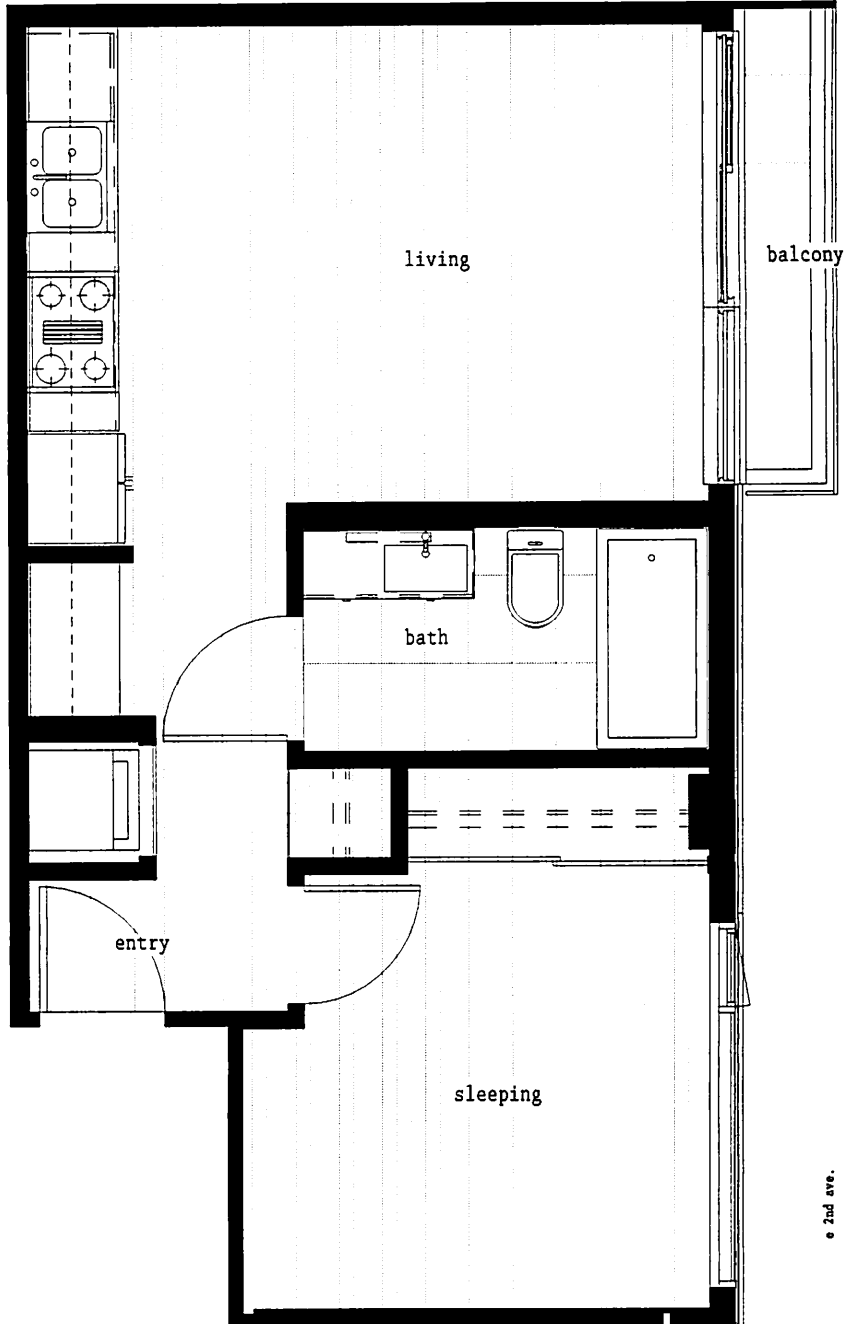
EVAN

2ND & SCOTIA

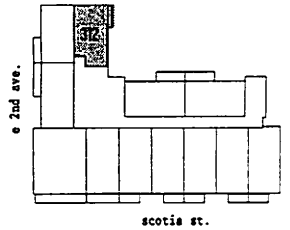
A

1 bedroom

interior: 465 sq. ft.
exterior: 17 sq. ft.



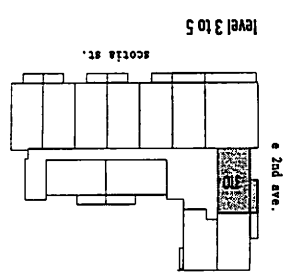
312
412
512



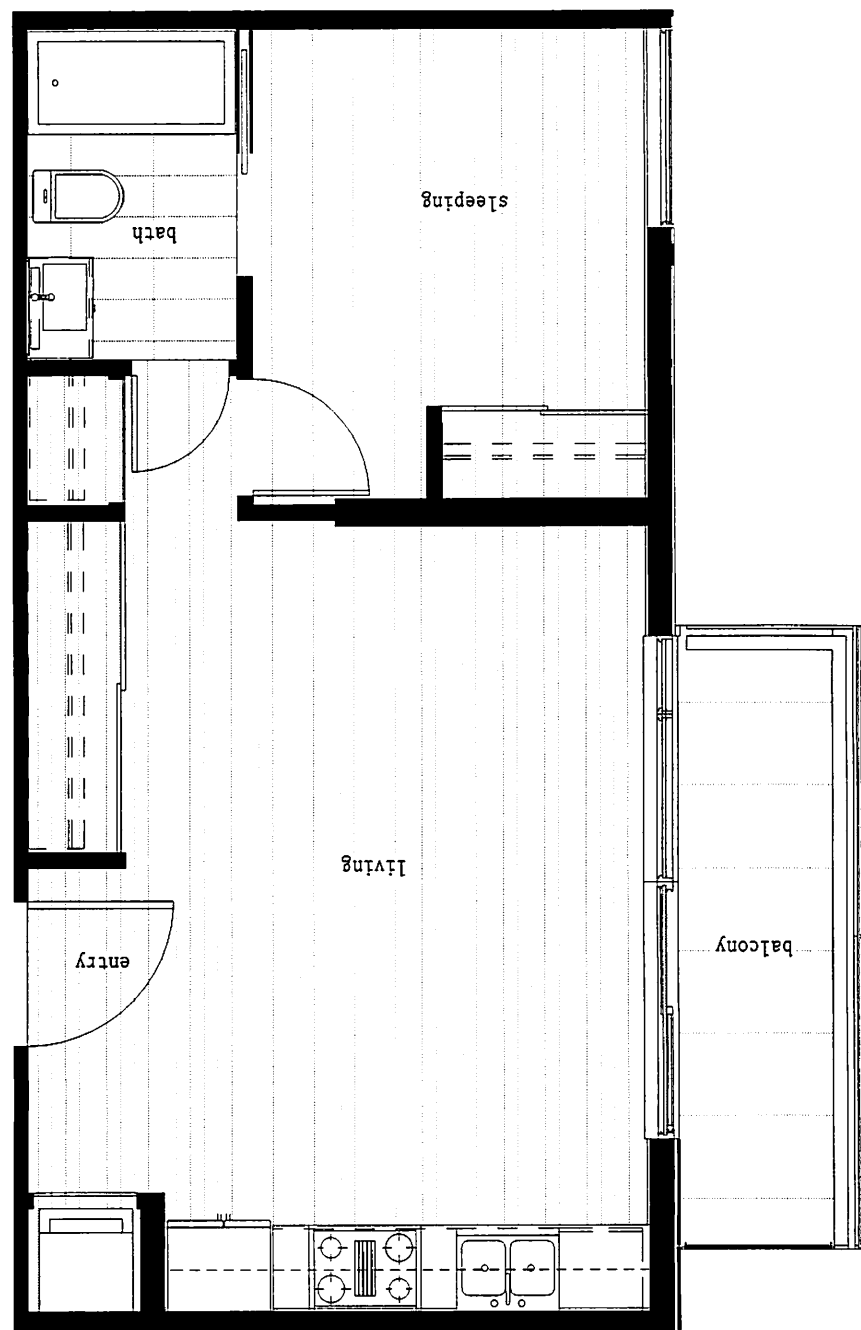
level 3 to 5



dimensions, sizes, specifications, layouts, flooring direction, and materials are approximate only and subject to change without notice. e.f.o.e.



510
410
310



interior: 512 sq. ft.
exterior: 23 sq. ft.

1 bedroom

B



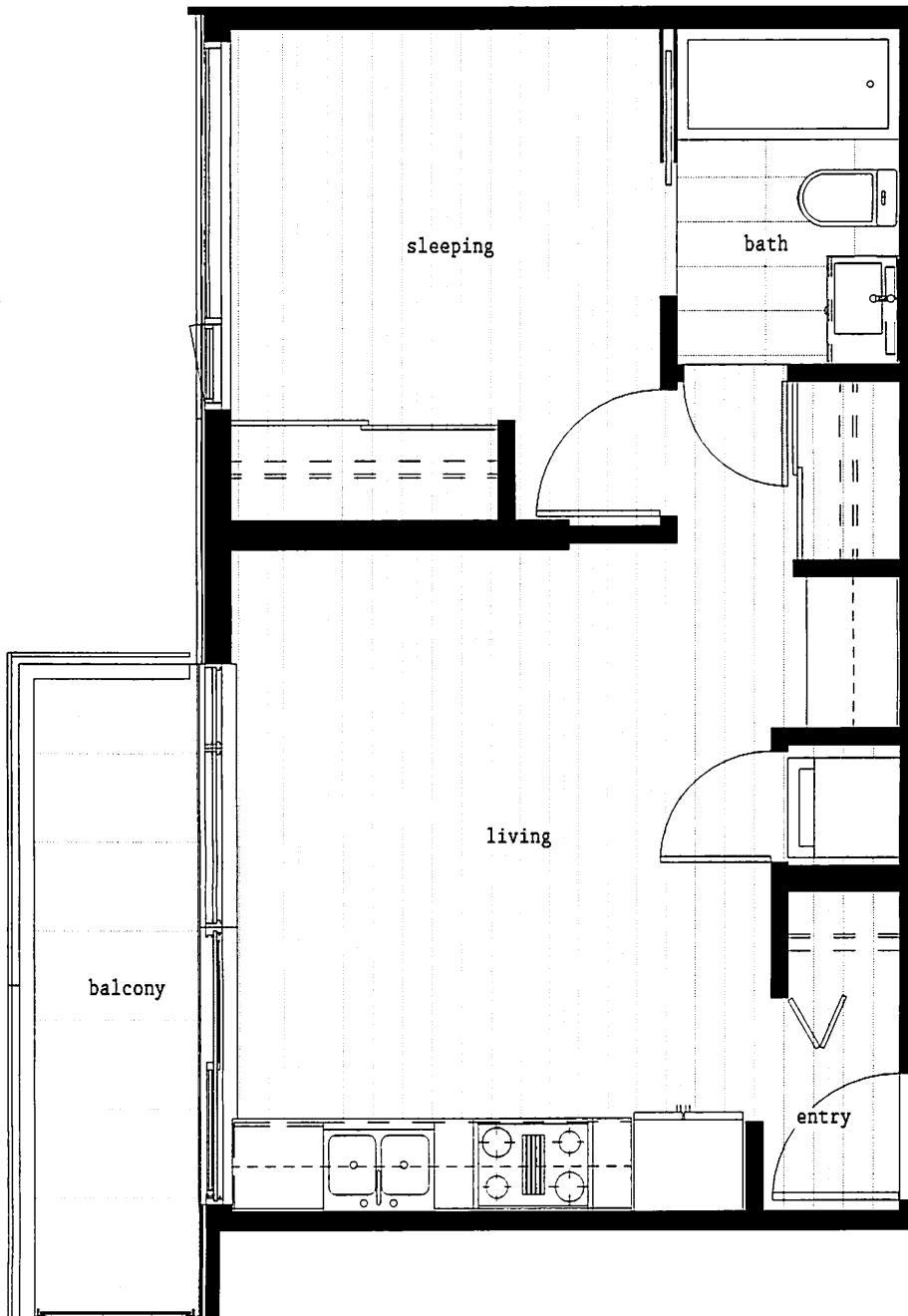
EVAN

2ND & SCOTIA

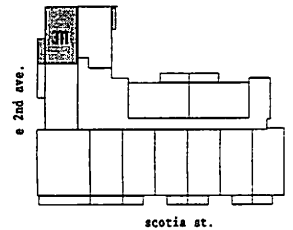
C

1 bedroom

interior: 440 sq. ft.
exterior: 53 sq. ft.



311
411
511



level 3 to 5



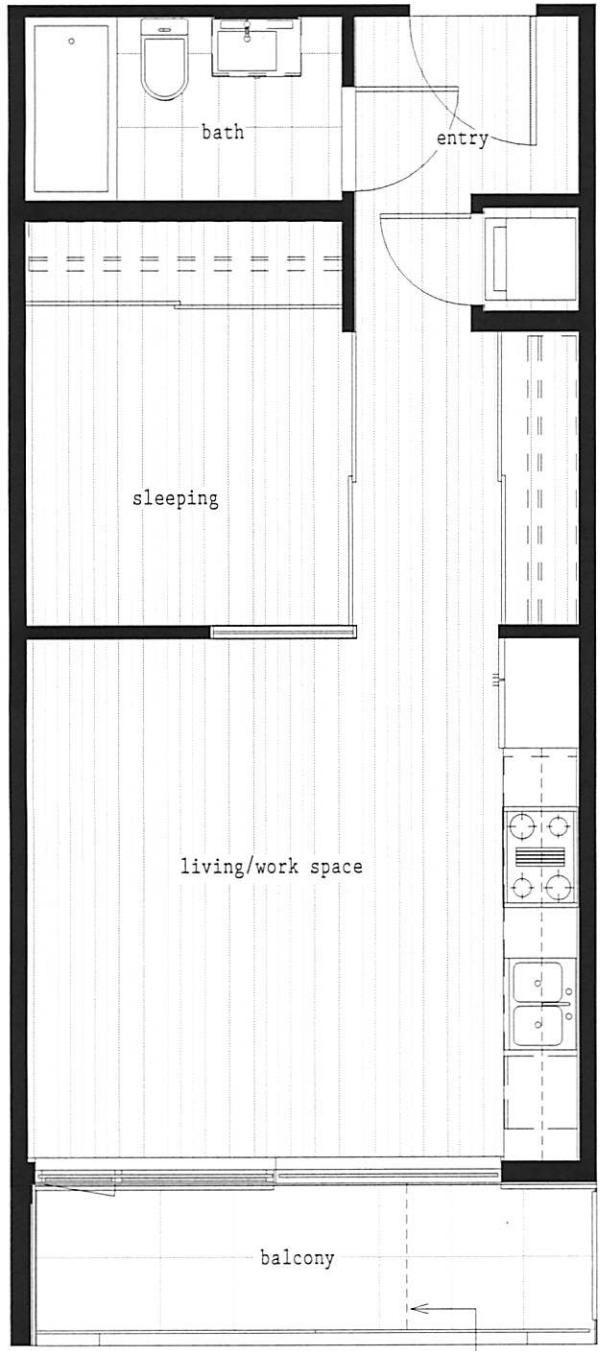
EVAN

2ND & SCOTIA

D

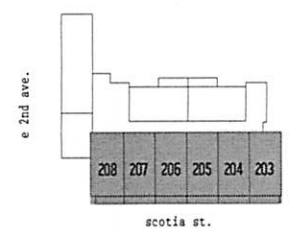
1 bedroom

interior: 515 sq. ft.
exterior: 44 sq. ft./62 sq. ft.

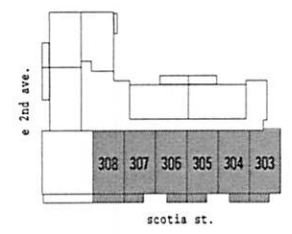


indicates extent of unit 307,306,305,304,303 balcony

- 208 207 206 205 204 203
- 308 307 306 305 304 303
- 408 407 406 405 404 403
- 508 507 506 505 504 503

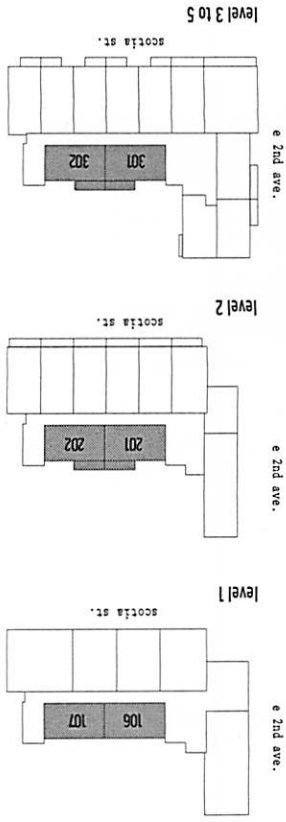


level 2

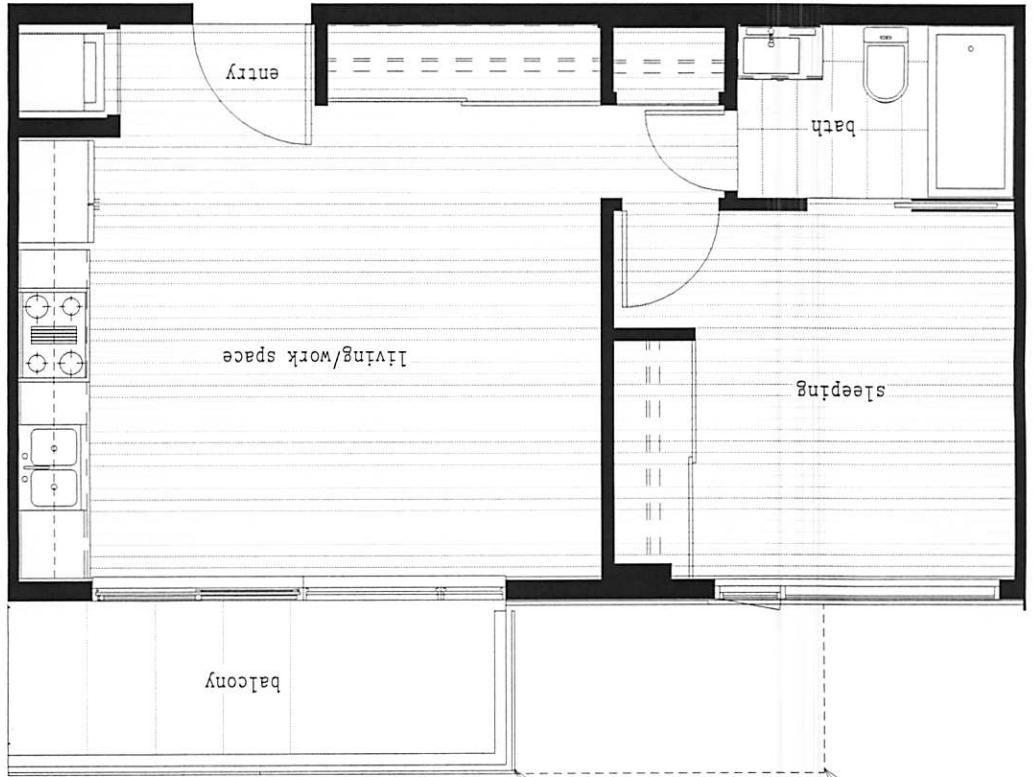


level 3 to 5





- 501 502
- 401 402
- 301 302
- 201 202
- 106 107



Indicates extent of unit 107 exterior terrace

Indicates extent of unit 106 exterior terrace

interior: 512 sq. ft.
exterior: 63 sq. ft./104 sq. ft.

1 bedroom



2ND & SCOTIA

EVAN

EVAN

2ND & SCOTIA

F

2 bedroom

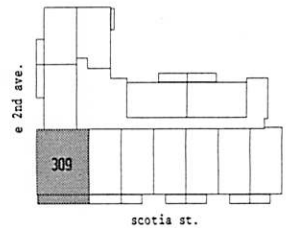
interior: 836 sq. ft.
exterior: 1111 sq. ft.



309

409

509



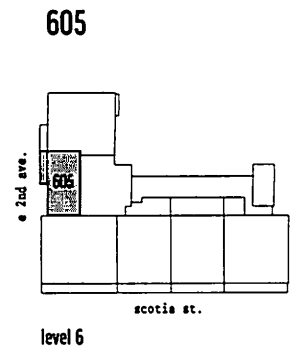
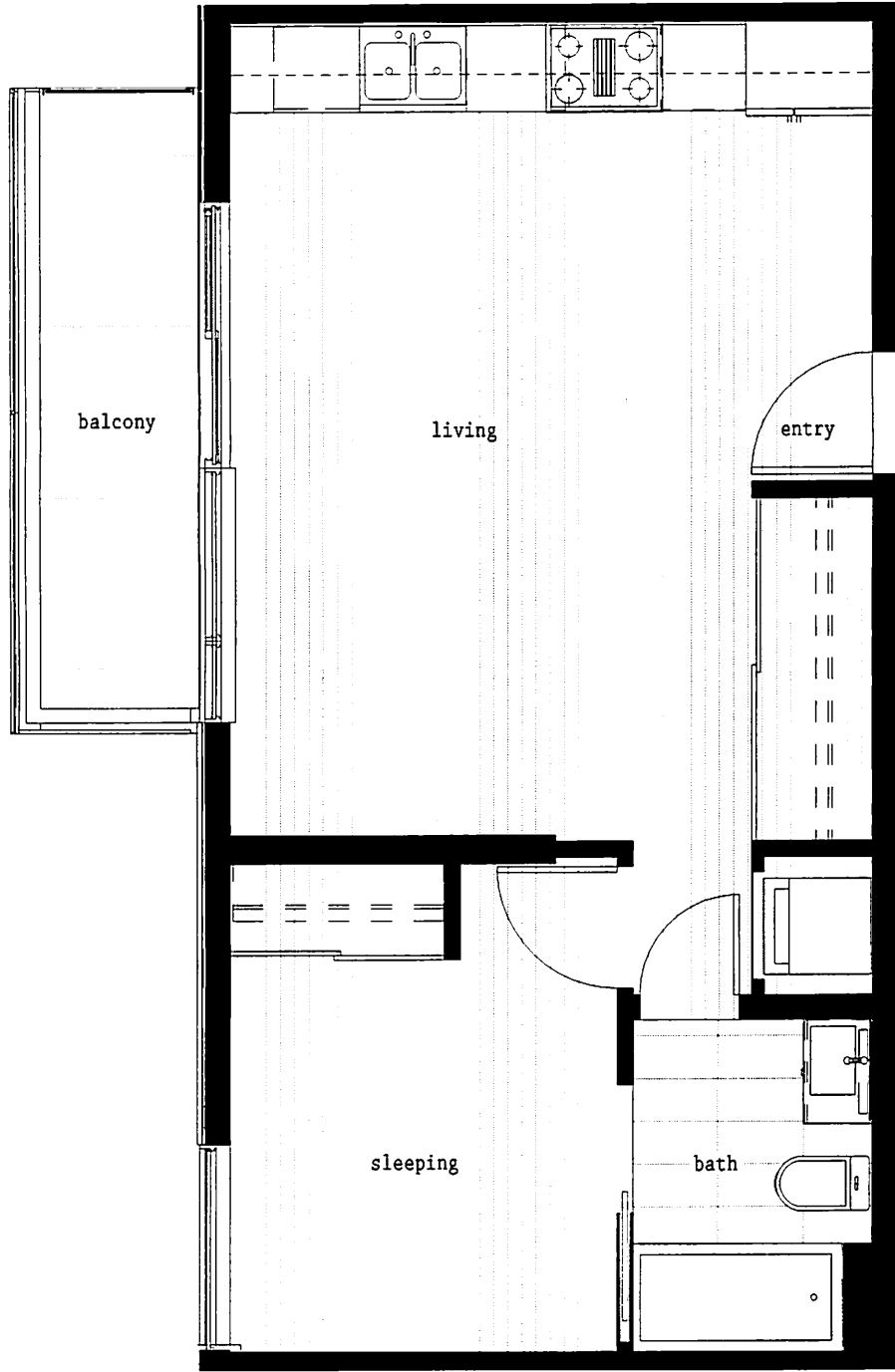
level 3 to 5

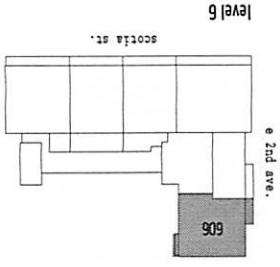


B2

1 bedroom

interior: 506 sq. ft.
exterior: 63 sq. ft.





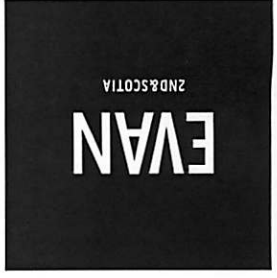
606



interior: 936 sq. ft.
exterior: 48 sq. ft.

C2

2 bedroom



EVAN

2ND & SCOTIA

D2

2 bedroom

interior: 849 sq. ft.

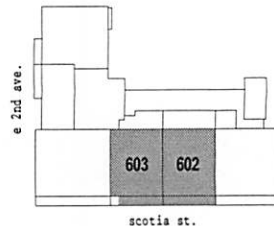
exterior: 96 sq. ft./117 sq. ft.

indicates extent of unit 605 patio



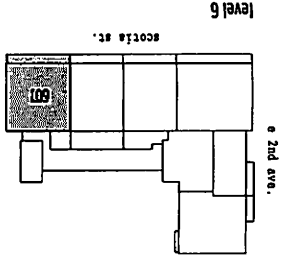
indicates extent of unit 605 balcony

603 602

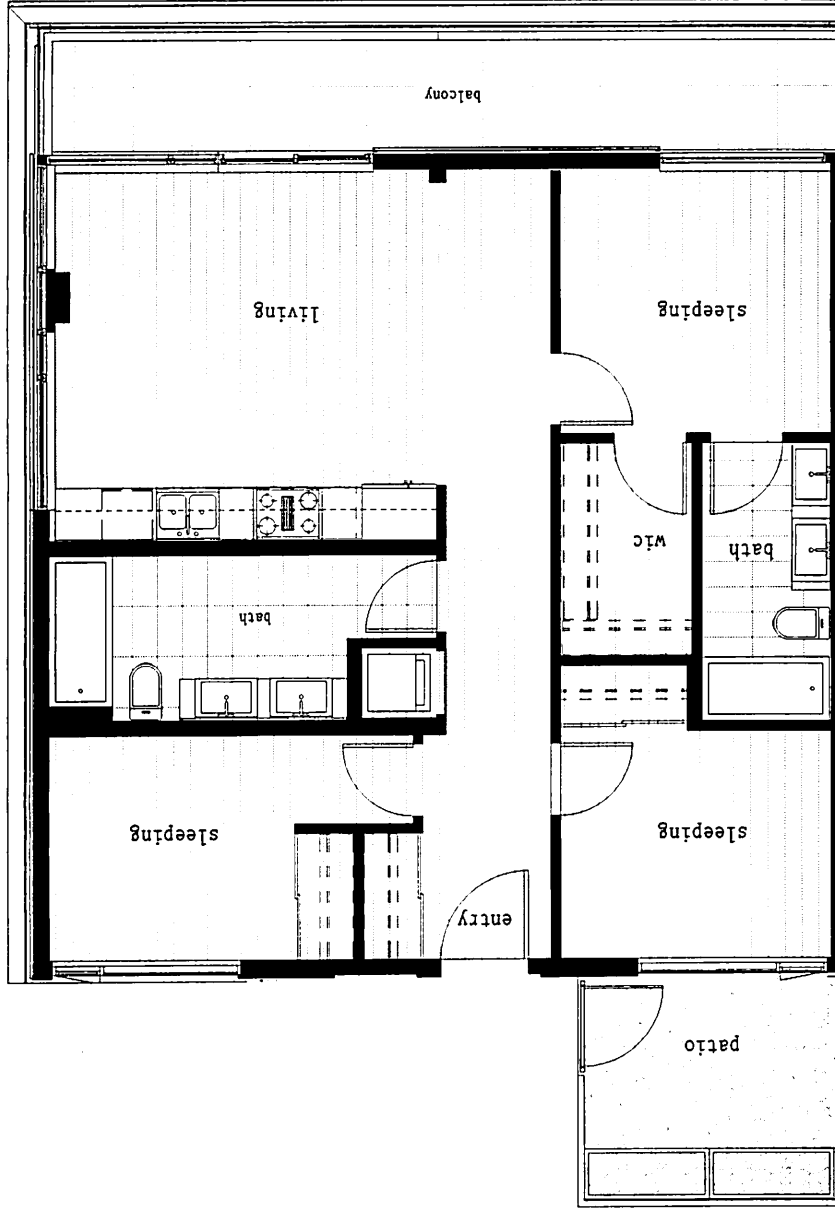


level 6

N



601



3 bedroom
interior: 1,043 sq. ft.
exterior: 142 sq. ft.

E2



EVAN

2ND & SCOTIA

F2

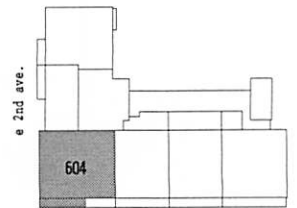
3 bedroom

interior: 1,200 sq. ft.

exterior: 114 sq. ft.



604



level 6

N

