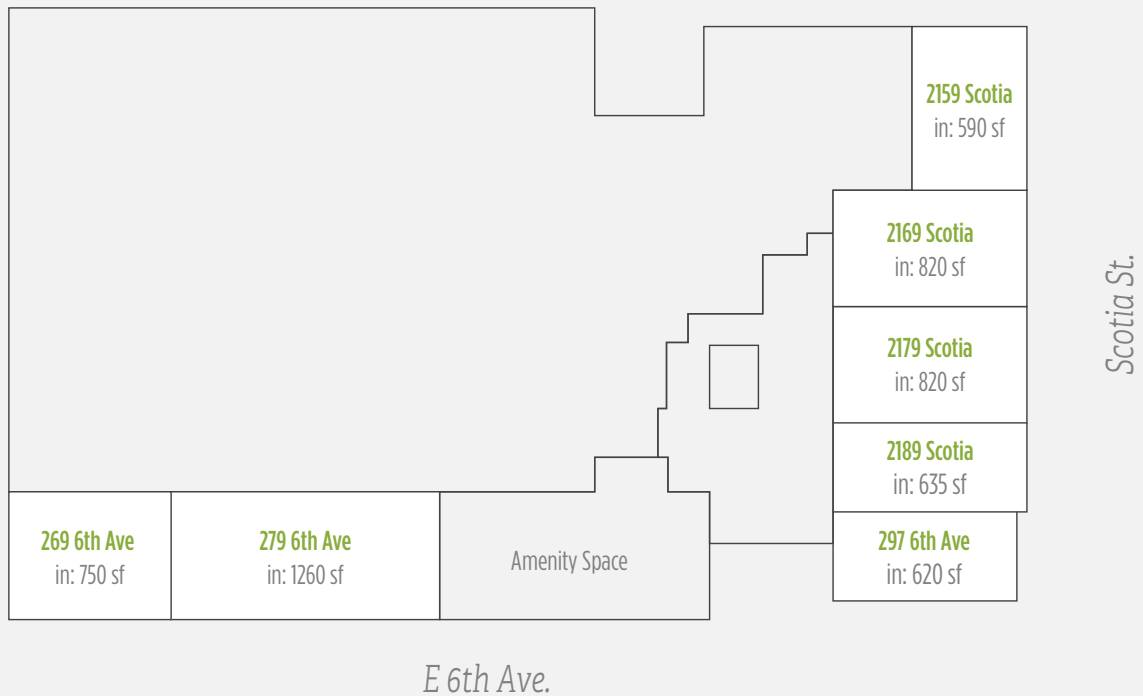




1st Floor:

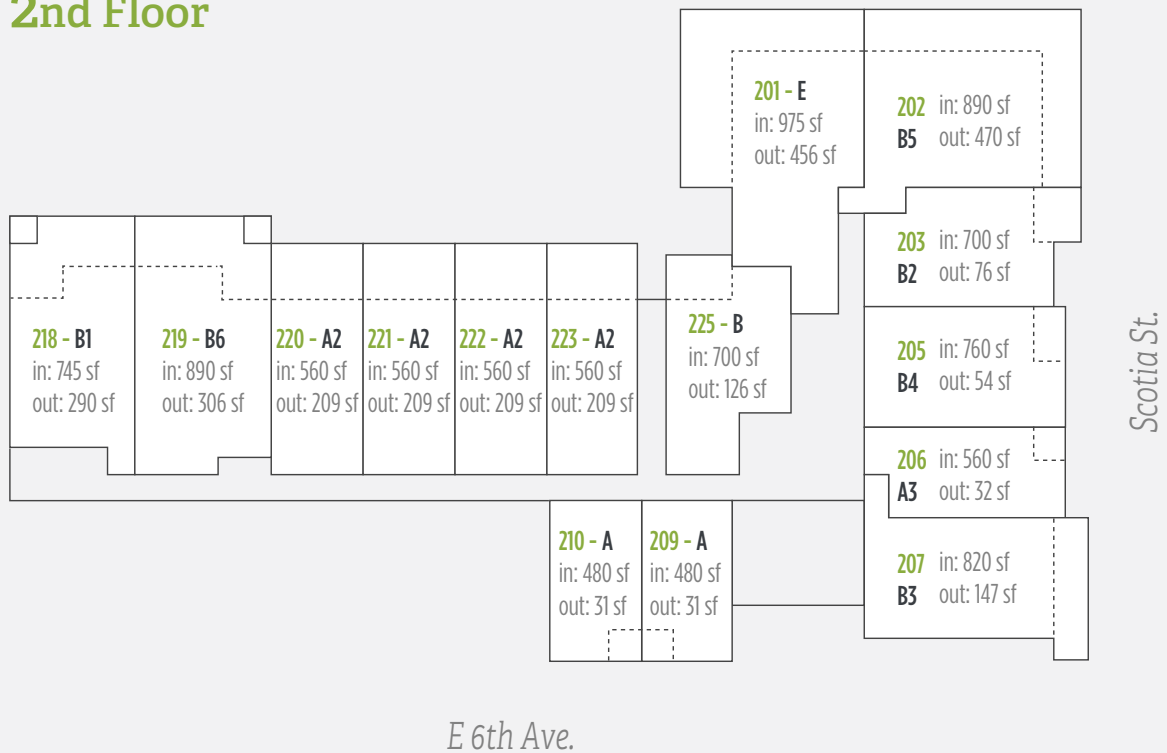


KEY MARKETING

The builder reserves the right to make modifications or substitutions to information contained herein. Dimensions, sizes, specifications, layouts, materials, and prices are approximate only, and are subject to changes. Floorplan may be mirror images/reversed depending on the unit number.



2nd Floor



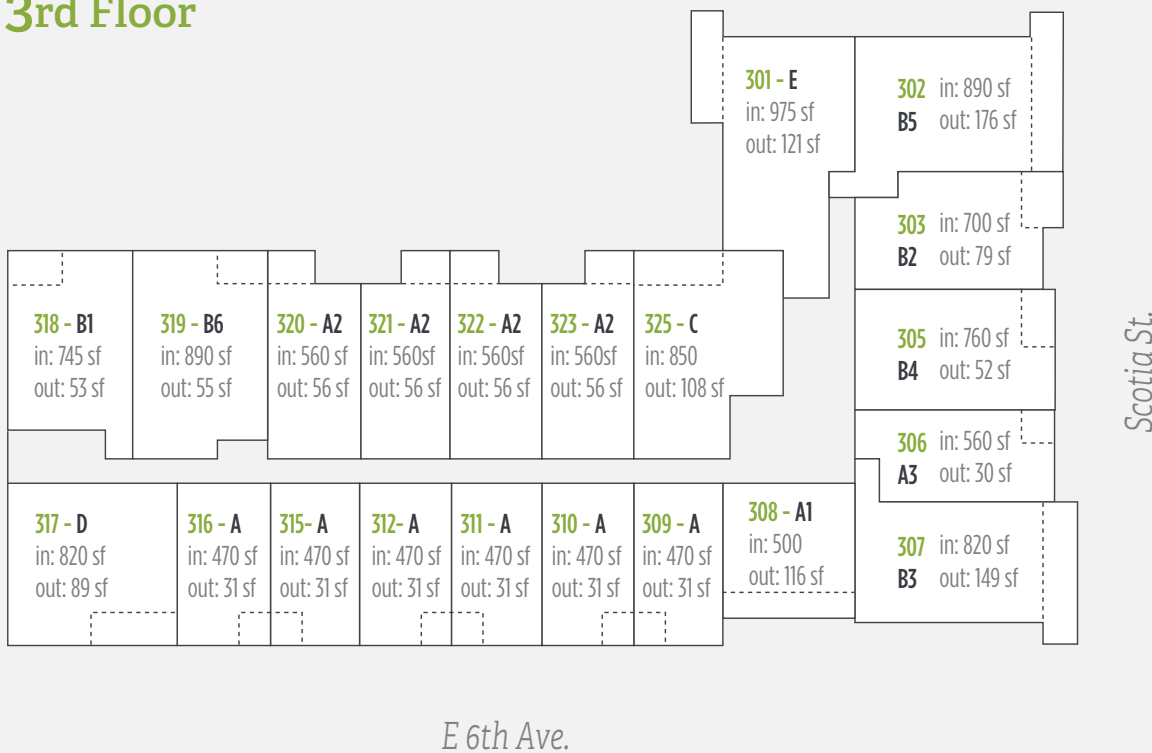
KEY MARKETING

The builder reserves the right to make modifications or substitutions to information contained herein. Dimensions, sizes, specifications, layouts, materials, and prices are approximate only, and are subject to changes. Floorplan may be mirror images/reversed depending on the unit number.



SHINE

3rd Floor

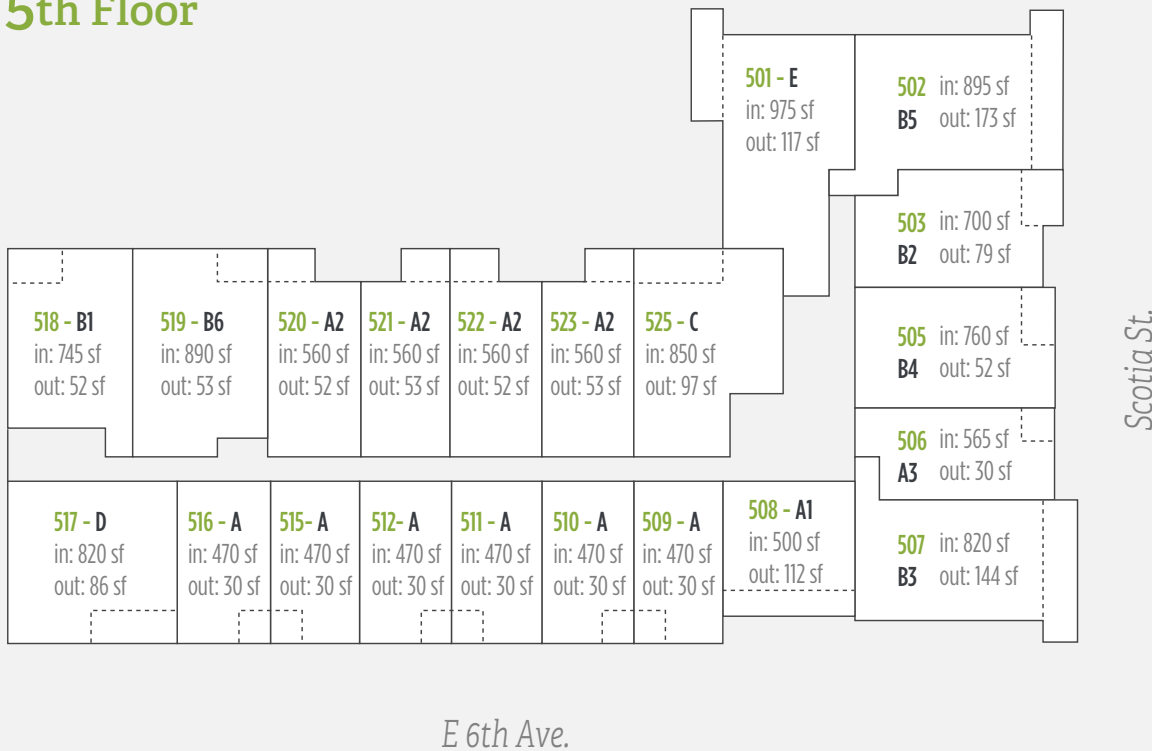


KEY MARKETING

The builder reserves the right to make modifications or substitutions to information contained herein. Dimensions, sizes, specifications, layouts, materials, and prices are approximate only, and are subject to changes. Floorplan may be mirror images/reversed depending on the unit number.



5th Floor



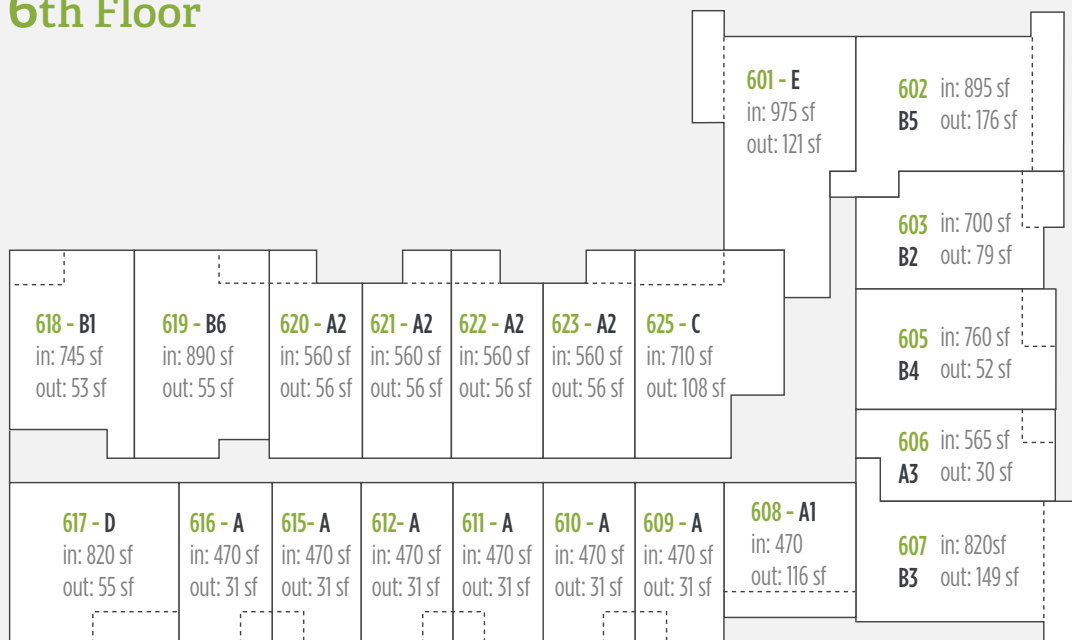
KEY MARKETING

The builder reserves the right to make modifications or substitutions to information contained herein. Dimensions, sizes, specifications, layouts, materials, and prices are approximate only, and are subject to changes. Floorplan may be mirror images/reversed depending on the unit number.



SHINE

6th Floor



Scotia St.

E 6th Ave.

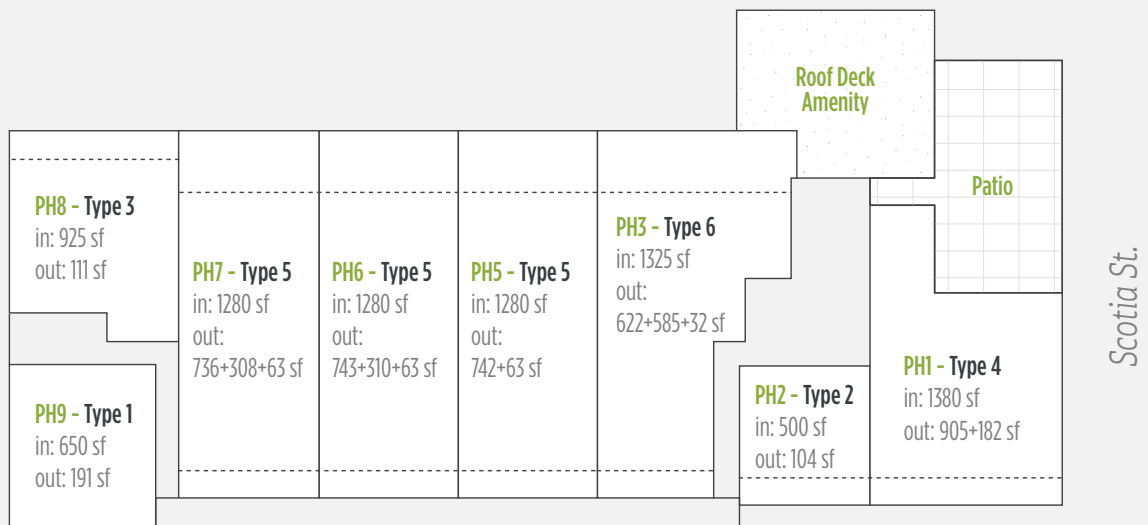


KEY MARKETING

The builder reserves the right to make modifications or substitutions to information contained herein. Dimensions, sizes, specifications, layouts, materials, and prices are approximate only, and are subject to changes. Floorplan may be mirror images/reversed depending on the unit number.



Penthouse Floor

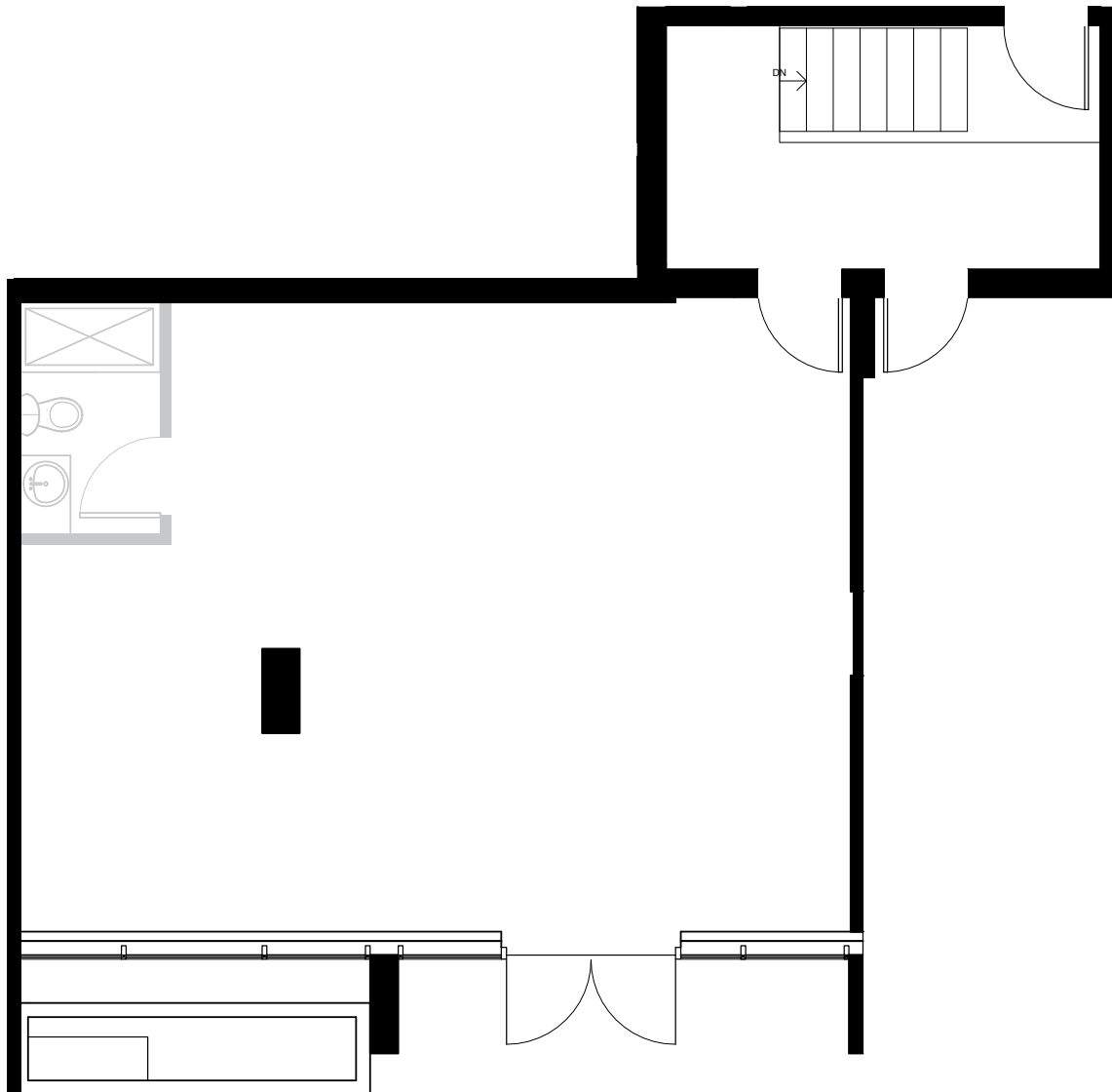


KEY MARKETING

The builder reserves the right to make modifications or substitutions to information contained herein. Dimensions, sizes, specifications, layouts, materials, and prices are approximate only, and are subject to changes. Floorplan may be mirror images/reversed depending on the unit number.



269 6th Ave
Total: 750 sq ft



Level 1



Scotia St.

E 6th Ave.

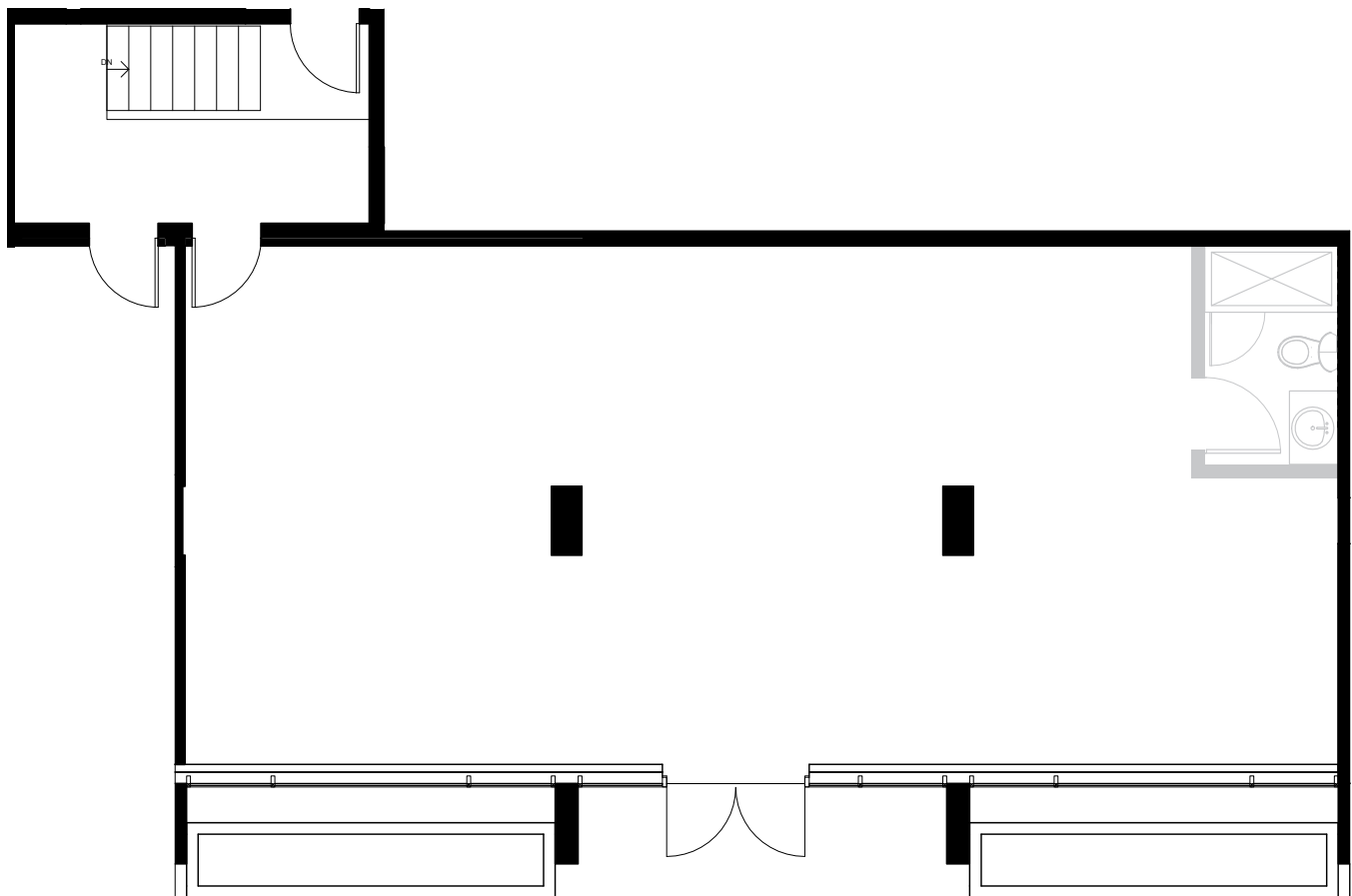


KEY MARKETING

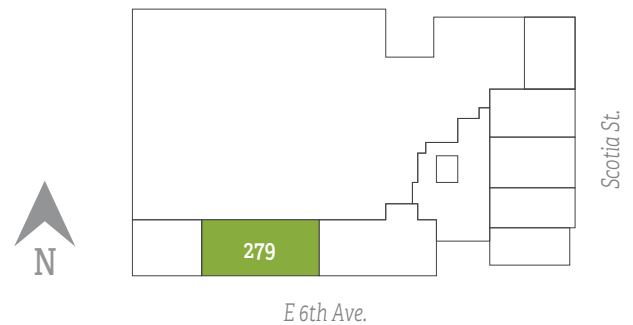
The builder reserves the right to make modifications or substitutions to information contained herein. Dimensions, sizes, specifications, layouts, materials, and prices are approximate only, and are subject to changes. Floorplan may be mirror images/reversed depending on the unit number.



279 6th Ave
Total: 1260 sq ft



Level 1

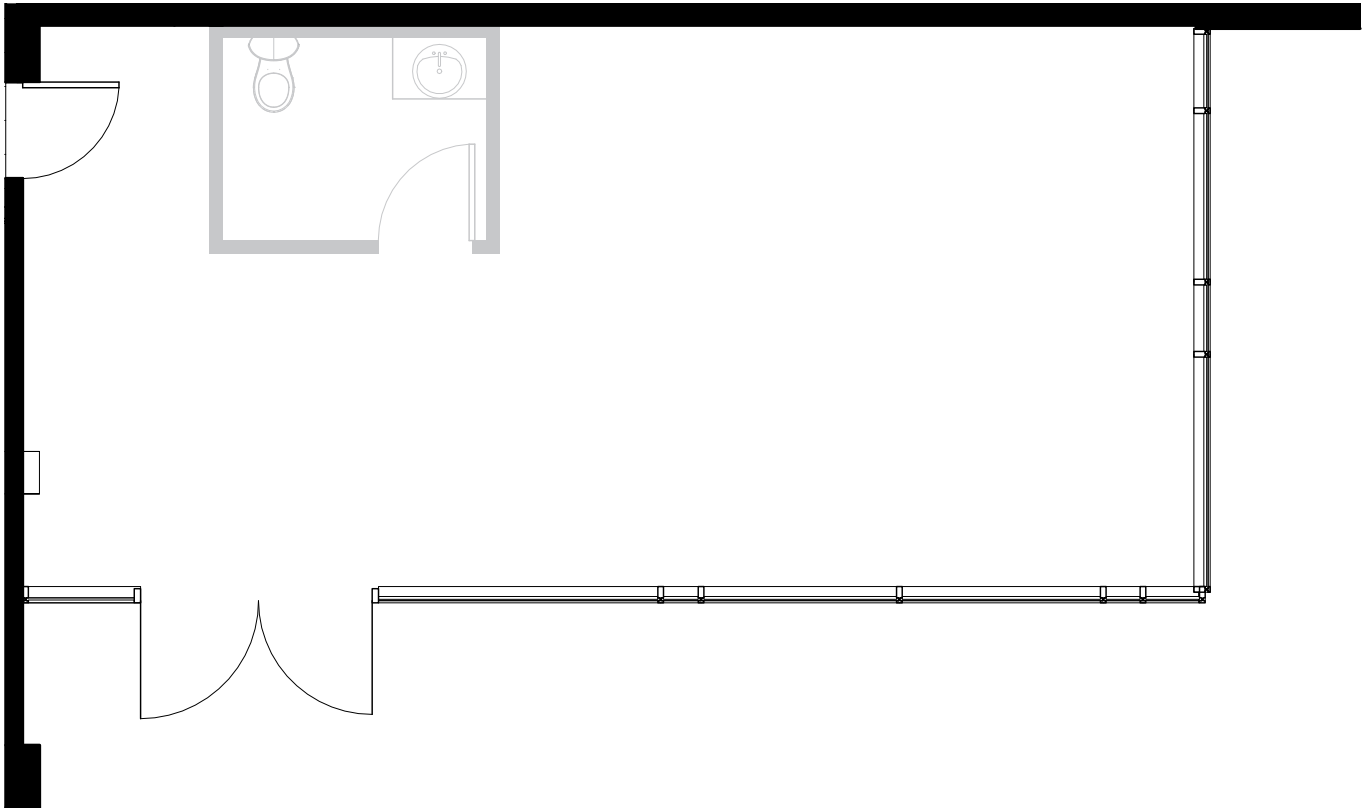


KEY MARKETING

The builder reserves the right to make modifications or substitutions to information contained herein. Dimensions, sizes, specifications, layouts, materials, and prices are approximate only, and are subject to changes. Floorplan may be mirror images/reversed depending on the unit number.

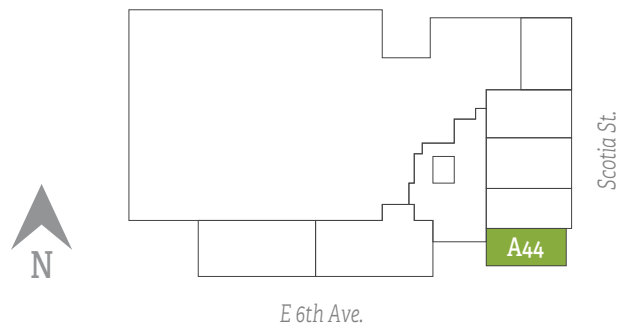


297 6th Ave
Total: 620 sq ft



Plumbing and electrical rough-in will be provided for the purchaser to connect to when they complete their own tenant improvements.

Level 1

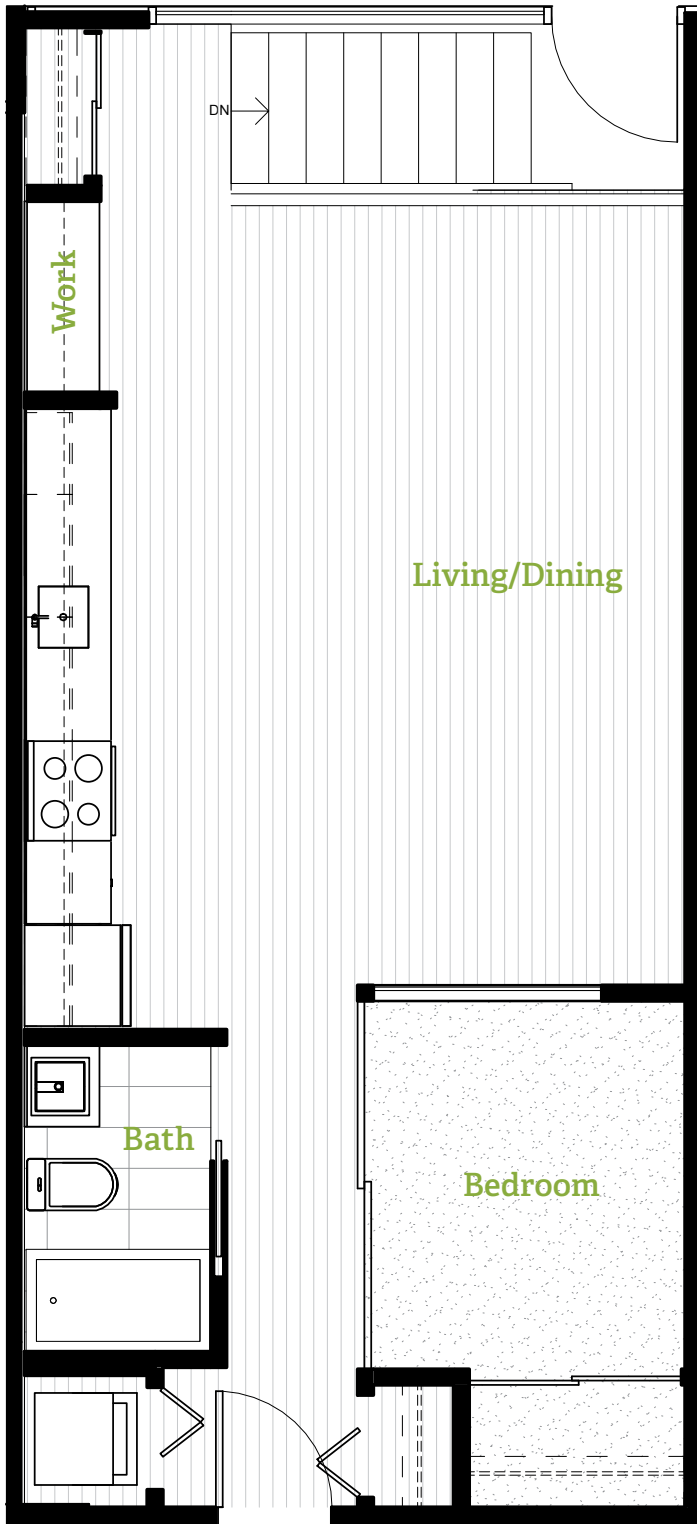


KEY MARKETING

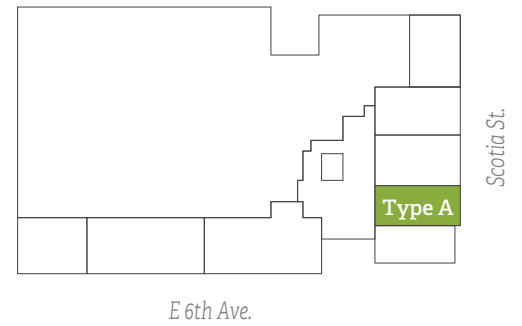
The builder reserves the right to make modifications or substitutions to information contained herein. Dimensions, sizes, specifications, layouts, materials, and prices are approximate only, and are subject to changes. Floorplan may be mirror images/reversed depending on the unit number.



2189 Scotia St.
1 bedroom + work space
Total: 635 sq ft



Level 1

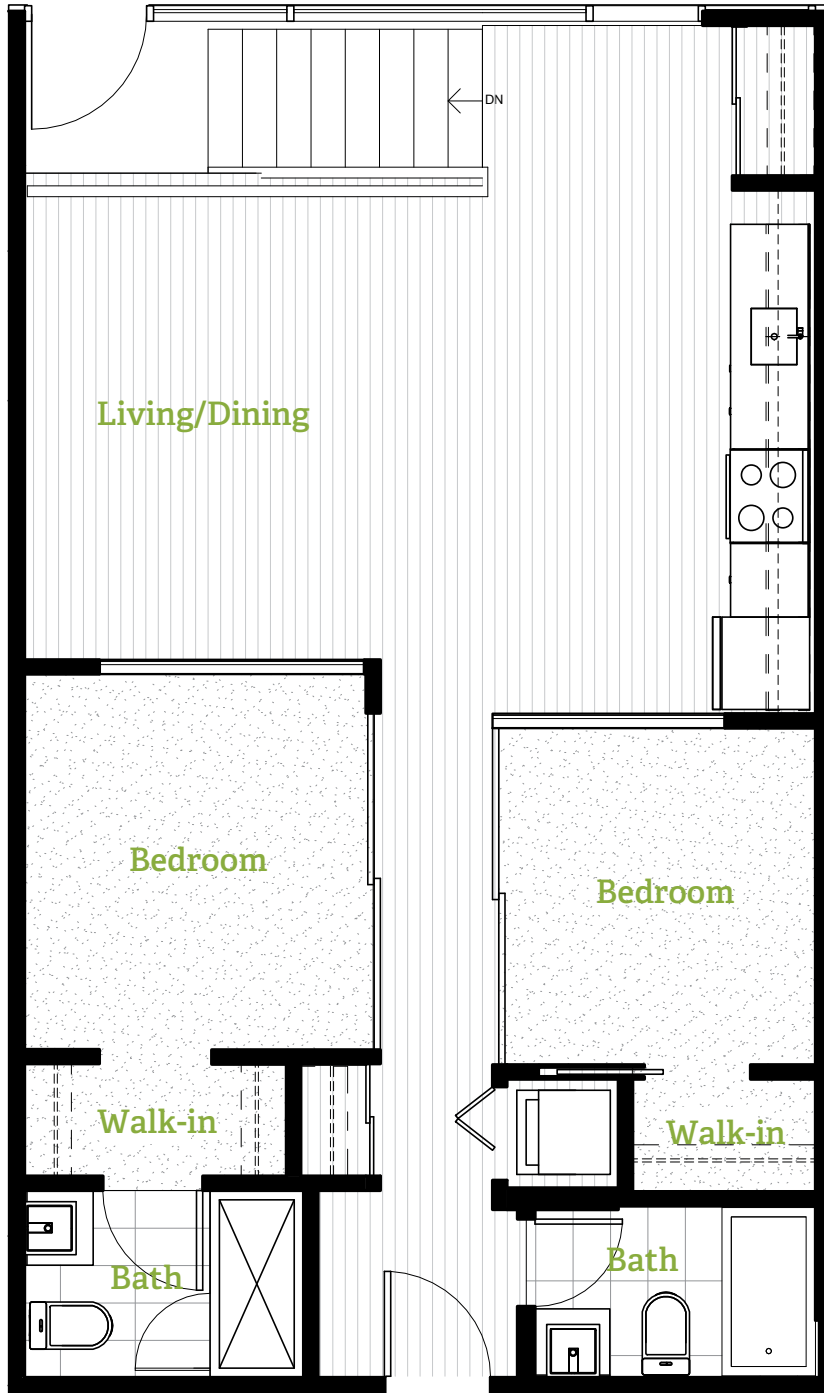


KEY MARKETING

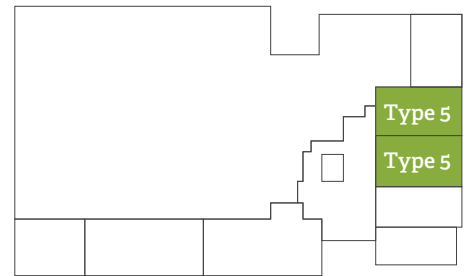
The builder reserves the right to make modifications or substitutions to information contained herein. Dimensions, sizes, specifications, layouts, materials, and prices are approximate only, and are subject to changes. Floorplan may be mirror images/reversed depending on the unit number.



2169, 2179 Scotia St.
2 bedrooms
Total: 820 sq ft



Level 1



E 6th Ave.

Scotia St.



KEY MARKETING

The builder reserves the right to make modifications or substitutions to information contained herein. Dimensions, sizes, specifications, layouts, materials, and prices are approximate only, and are subject to changes. Floorplan may be mirror images/reversed depending on the unit number.



2159 Scotia St.
1 bedroom + work space
Total: 730 sq ft



Level 1



Scotia St.

E 6th Ave.



KEY MARKETING

The builder reserves the right to make modifications or substitutions to information contained herein. Dimensions, sizes, specifications, layouts, materials, and prices are approximate only, and are subject to changes. Floorplan may be mirror images/reversed depending on the unit number.

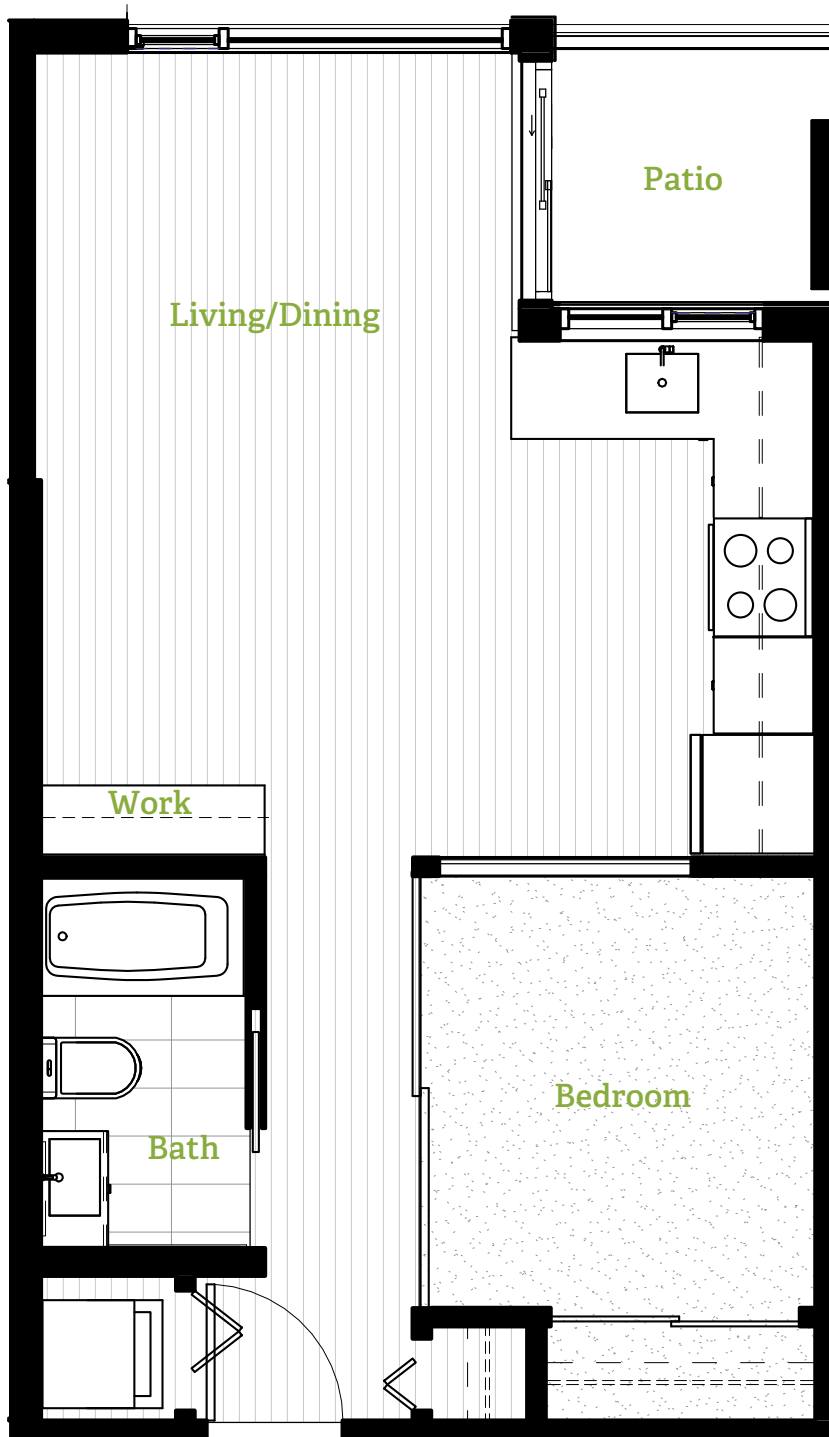


Unit Plan A

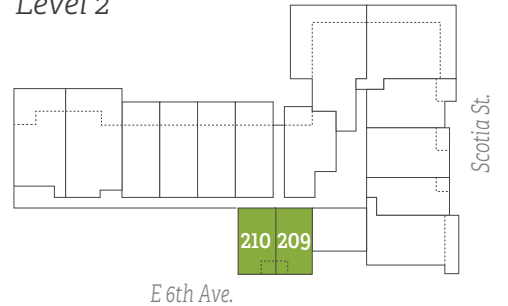
1 bedroom + work space

Interior: 470-480 sq ft + Exterior: 30 sq ft

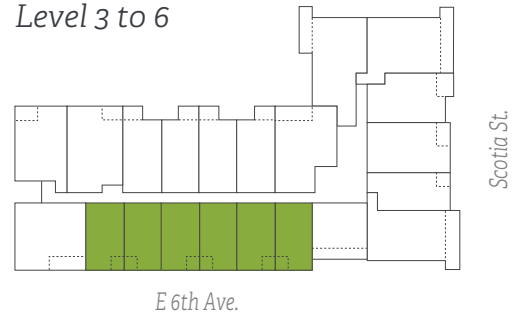
Total: 500-510 sq ft



Level 2



Level 3 to 6



Similar Units

209 - 210

309 - 316

509 - 516

609 - 616



KEY MARKETING

The builder reserves the right to make modifications or substitutions to information contained herein. Dimensions, sizes, specifications, layouts, materials, and prices are approximate only, and are subject to changes. Floorplan may be mirror images/reversed depending on the unit number.

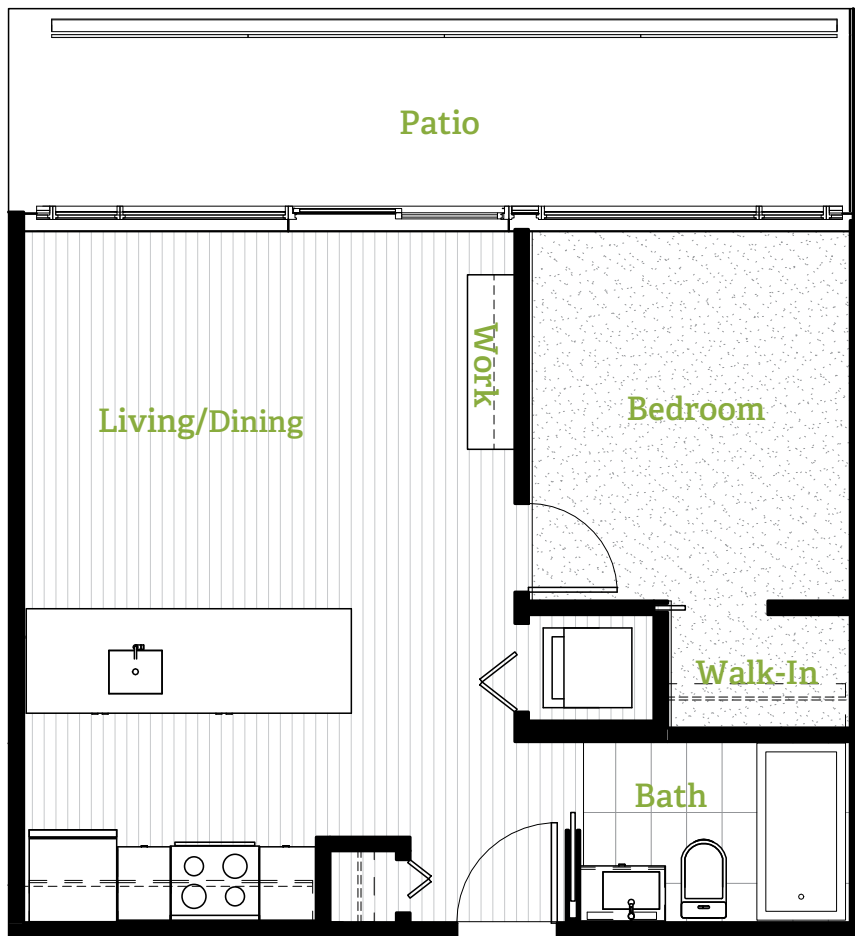


Unit Plan A1 / PH2

1 bedroom + work space

Interior: 500 sq ft + Exterior: 104-116 sq ft

Total: 604-616 sq ft



Level 3 to 6



Penthouse Level



Similar Units
308, 508, 608, PH2



KEY MARKETING

The builder reserves the right to make modifications or substitutions to information contained herein. Dimensions, sizes, specifications, layouts, materials, and prices are approximate only, and are subject to changes. Floorplan may be mirror images/reversed depending on the unit number.



Unit Plan A2

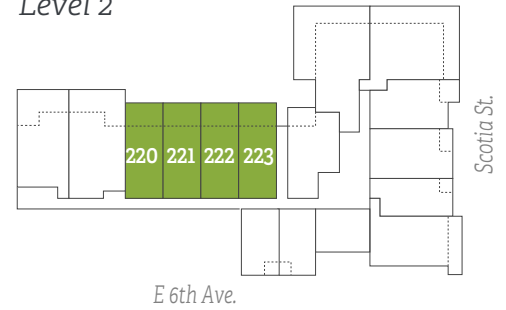
1 bedroom + work space

Interior: 560 sq ft + Exterior: 52-209 sq ft

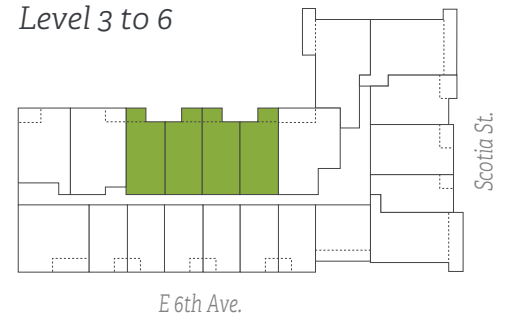
Total: 612-769 sq ft



Level 2



Level 3 to 6



Similar Units

220 - 223

320 - 323

520 - 523

620 - 623



KEY MARKETING

The builder reserves the right to make modifications or substitutions to information contained herein. Dimensions, sizes, specifications, layouts, materials, and prices are approximate only, and are subject to changes. Floorplan may be mirror images/reversed depending on the unit number.



Unit Plan A3

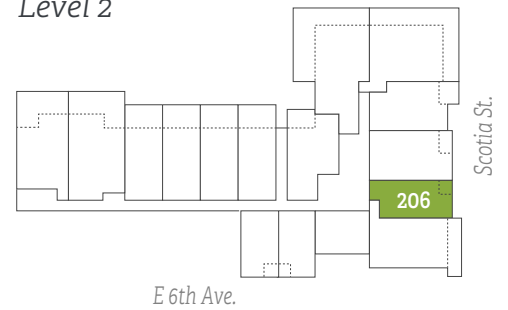
1 bedroom + work space

Interior: 560-565 sq ft + Exterior: 30 sq ft

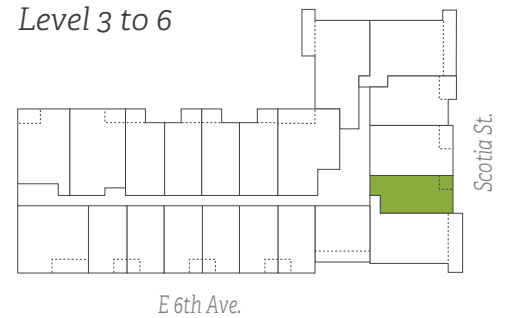
Total: 590-597 sq ft



Level 2



Level 3 to 6



Similar Units

206, 306, 506, 606



KEY MARKETING

The builder reserves the right to make modifications or substitutions to information contained herein. Dimensions, sizes, specifications, layouts, materials, and prices are approximate only, and are subject to changes. Floorplan may be mirror images/reversed depending on the unit number.

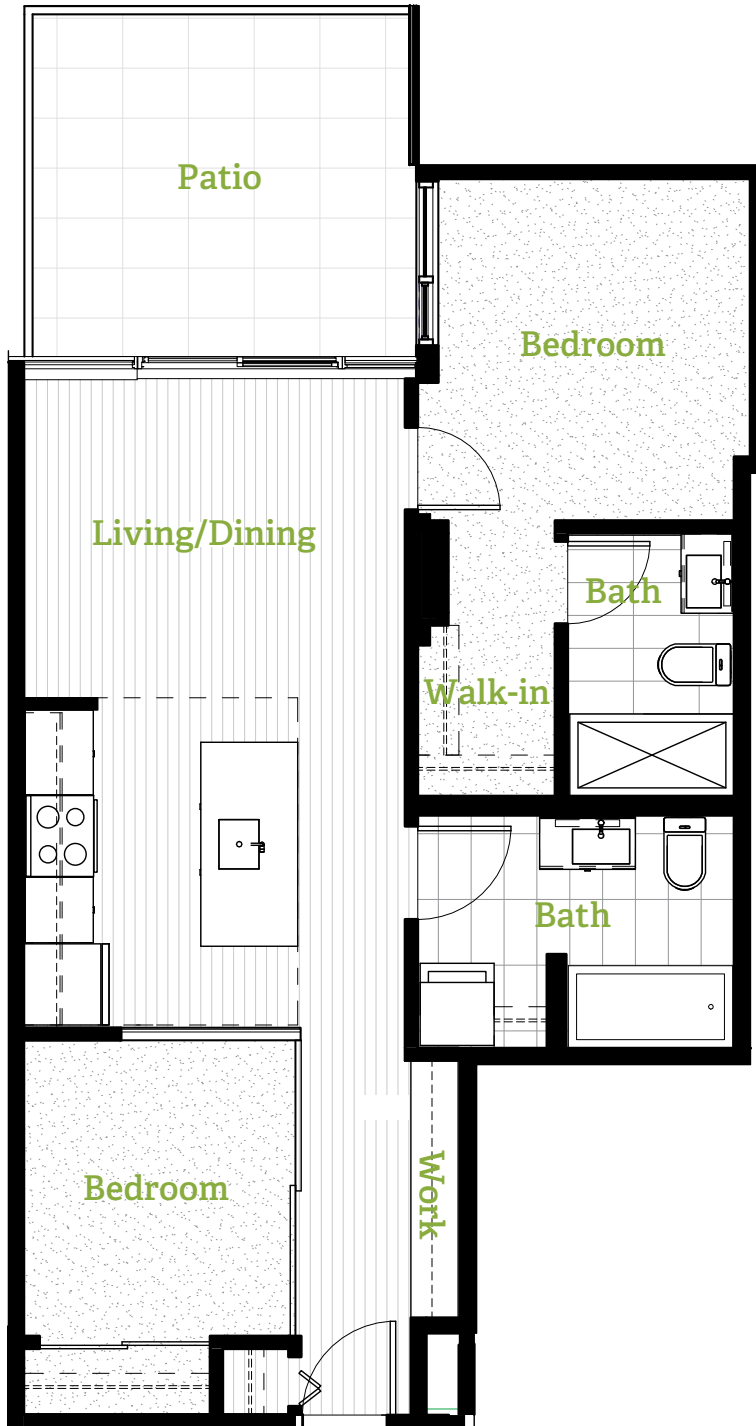


Unit Plan B

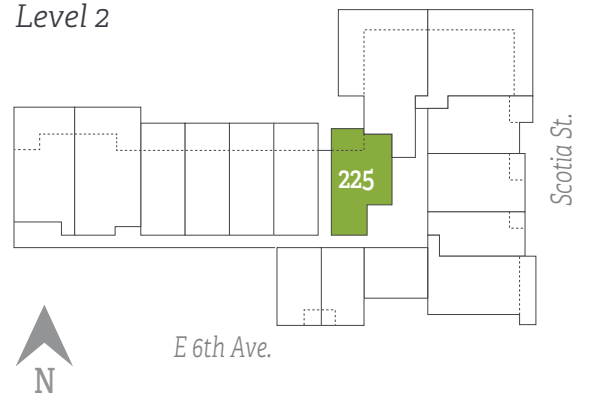
2 bedrooms + work space

Interior: 700 sq ft + Exterior: 126 sq ft

Total: 826 sq ft



Level 2



KEY MARKETING

The builder reserves the right to make modifications or substitutions to information contained herein. Dimensions, sizes, specifications, layouts, materials, and prices are approximate only, and are subject to changes. Floorplan may be mirror images/reversed depending on the unit number.

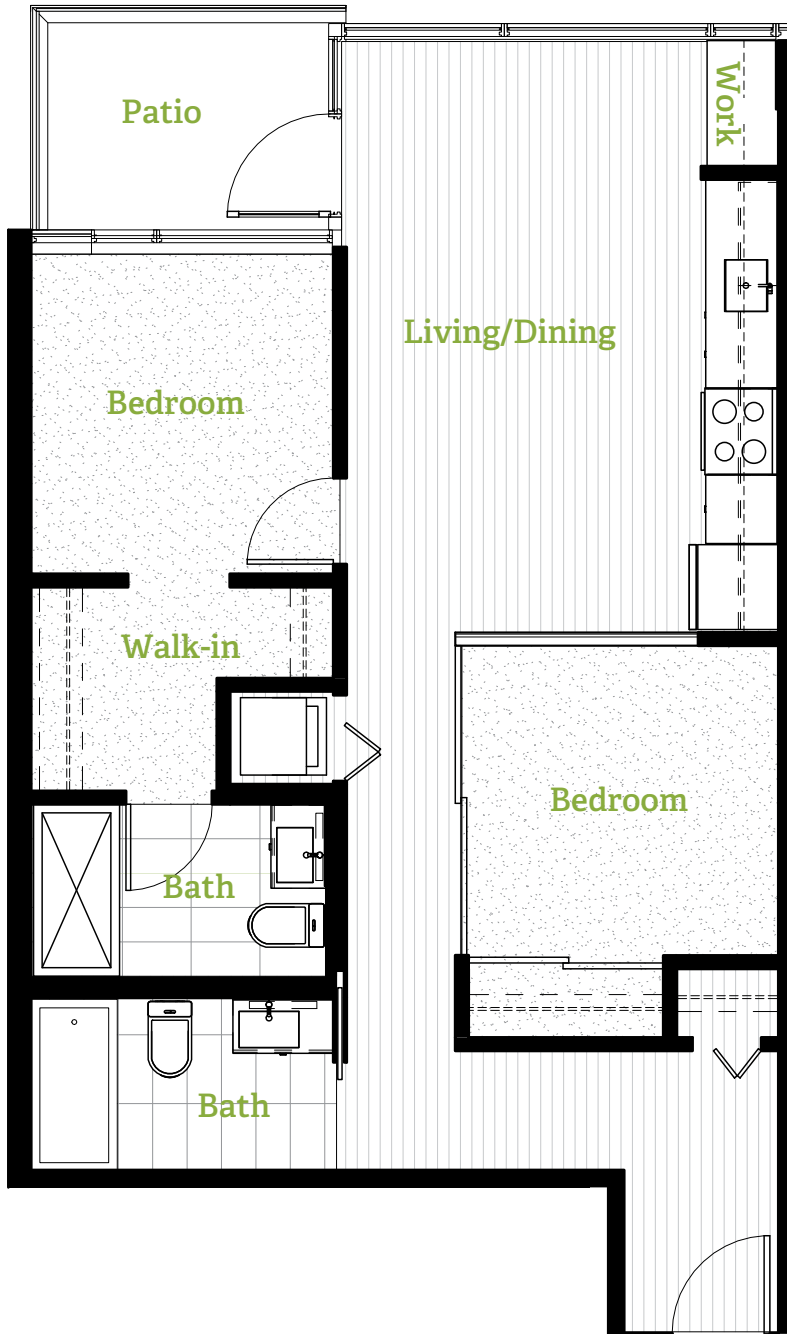


Unit Plan B1

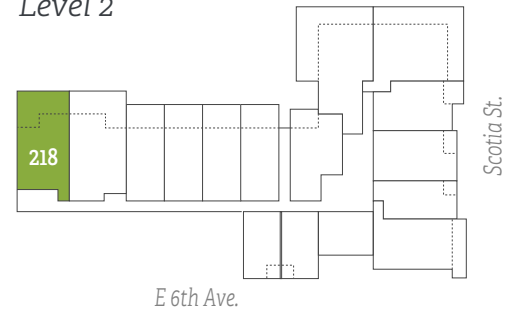
2 bedrooms + work space

Interior: 745 sq ft + Exterior: 52-290 sq ft

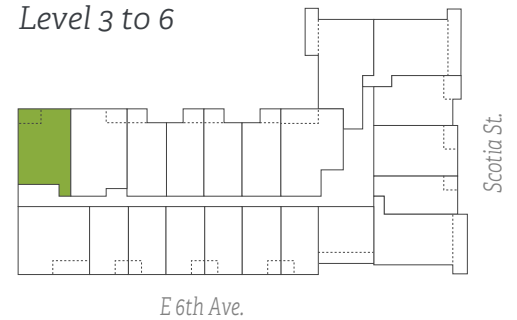
Total: 797-1035 sq ft



Level 2



Level 3 to 6



Similar Units
218, 318, 518, 618



KEY MARKETING

The builder reserves the right to make modifications or substitutions to information contained herein. Dimensions, sizes, specifications, layouts, materials, and prices are approximate only, and are subject to changes. Floorplan may be mirror images/reversed depending on the unit number.

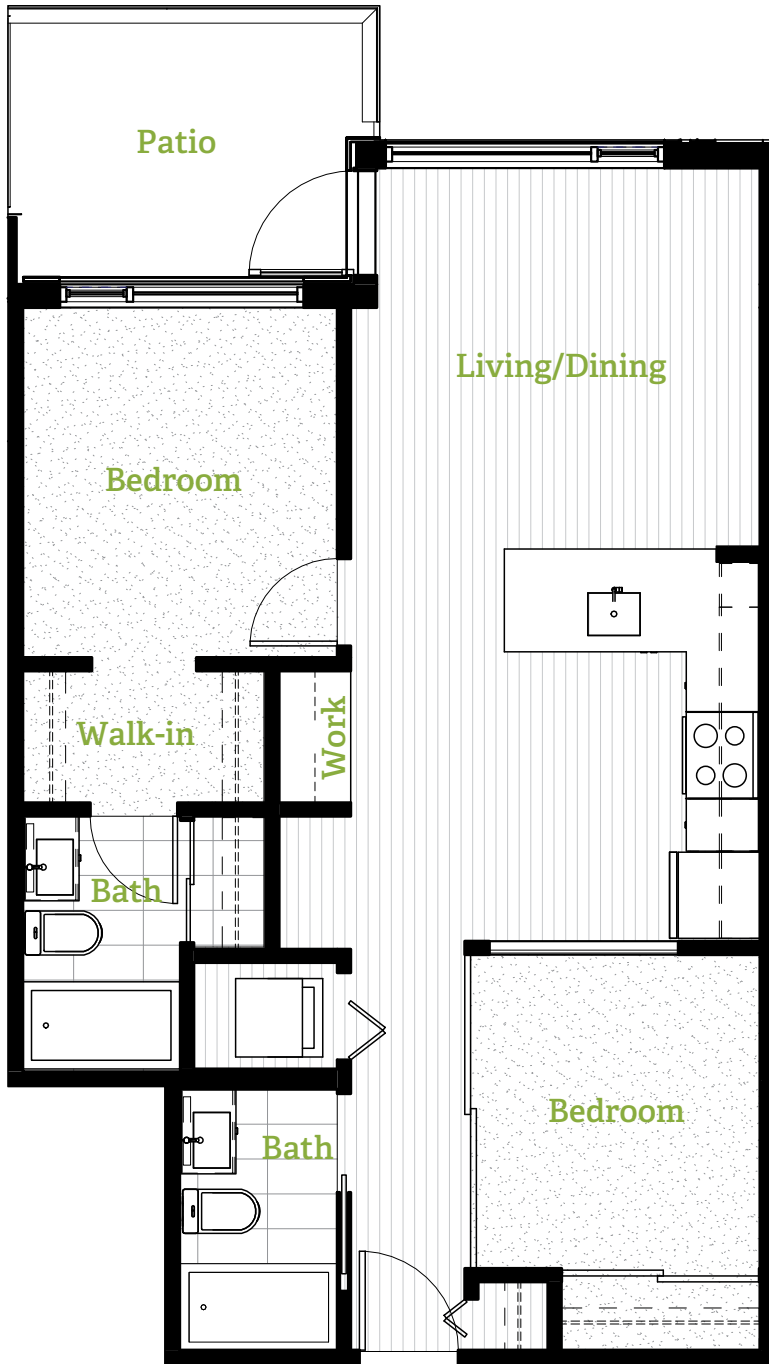


Unit Plan B2

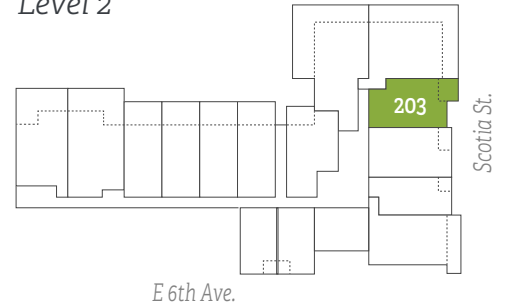
2 bedrooms + work space

Interior: 700 sq ft + Exterior: 76-79 sq ft

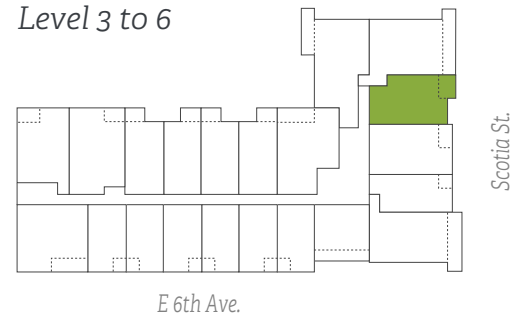
Total: 776-779 sq ft



Level 2



Level 3 to 6



Similar Units

203, 303, 503, 603



KEY MARKETING

The builder reserves the right to make modifications or substitutions to information contained herein. Dimensions, sizes, specifications, layouts, materials, and prices are approximate only, and are subject to changes. Floorplan may be mirror images/reversed depending on the unit number.

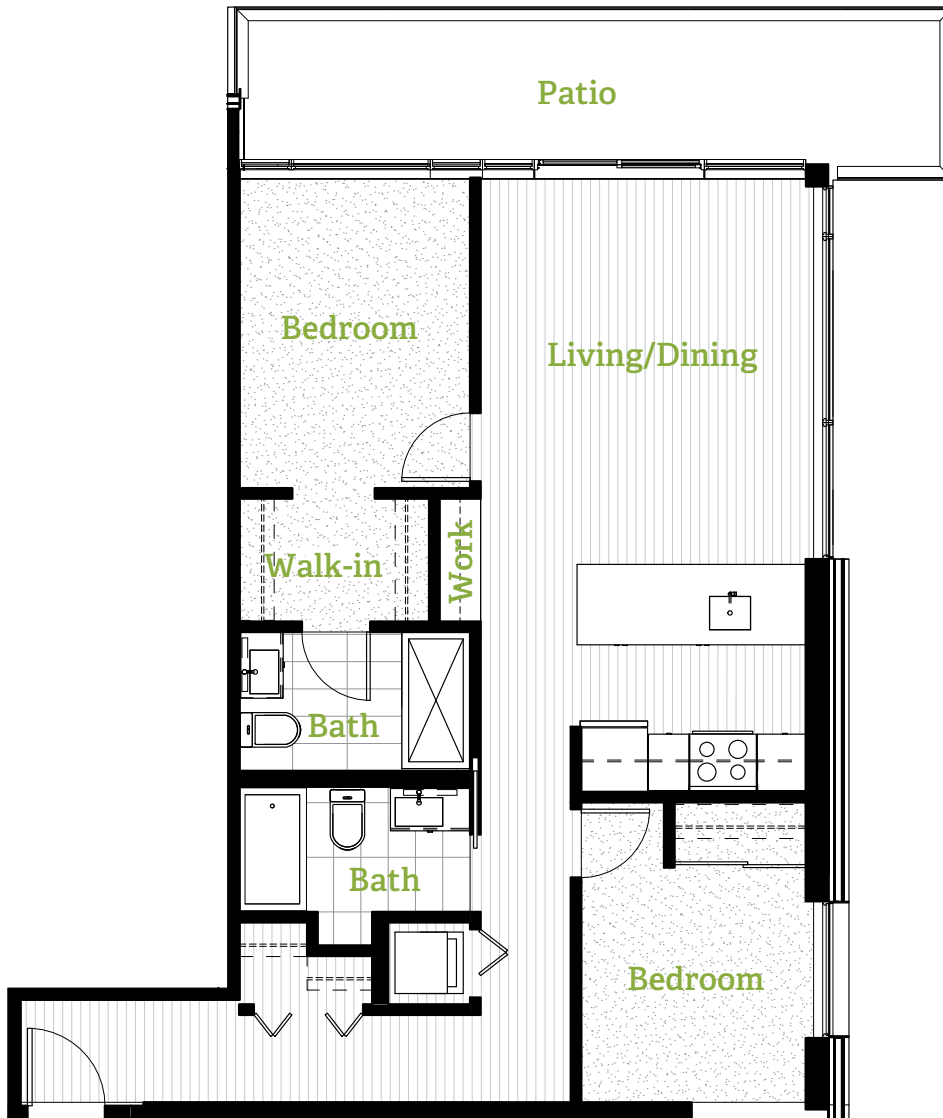
SHINE

Unit Plan B3

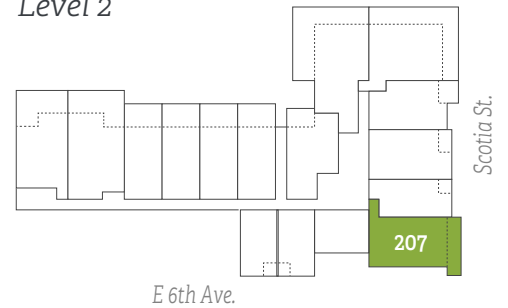
2 bedrooms + work space

Interior: 820 sq ft + Exterior: 144-149 sq ft

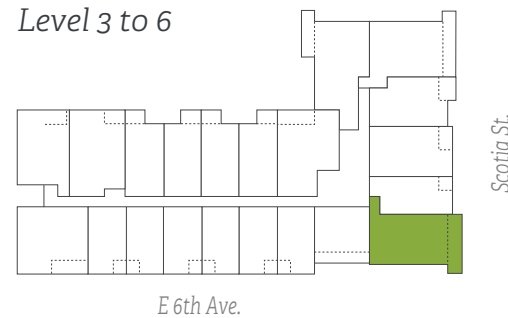
Total: 964-969 sq ft



Level 2



Level 3 to 6



Similar Units

207, 307, 507, 607



KEY MARKETING

The builder reserves the right to make modifications or substitutions to information contained herein. Dimensions, sizes, specifications, layouts, materials, and prices are approximate only, and are subject to changes. Floorplan may be mirror images/reversed depending on the unit number.

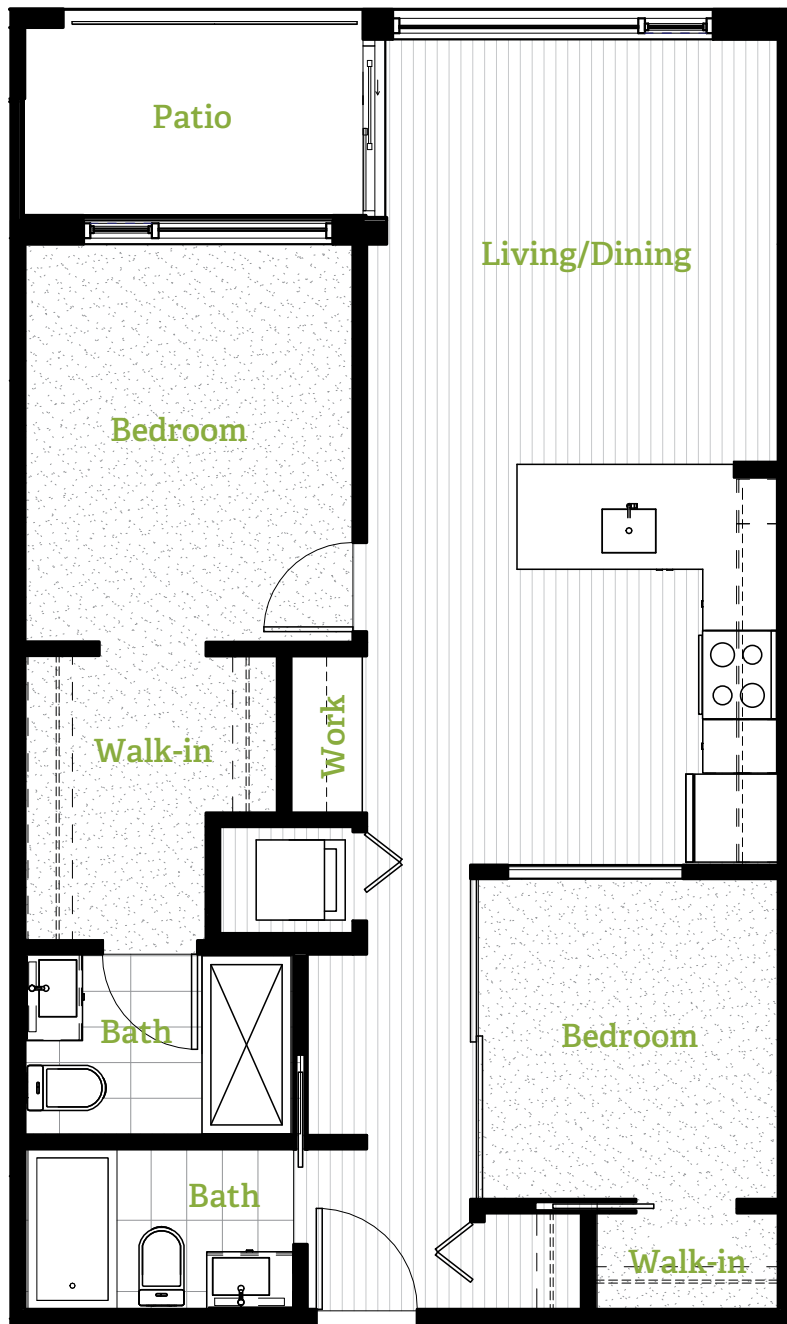


Unit Plan B4

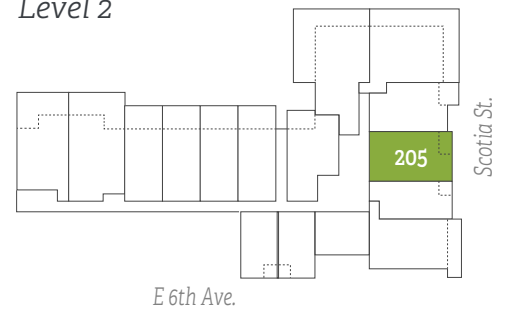
2 bedrooms + work space

Interior: 760 sq ft + Exterior: 52-54 sq ft

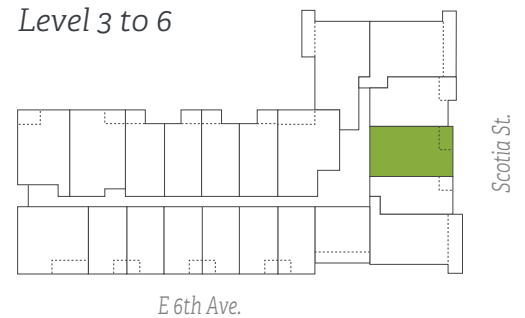
Total: 812-814 sq ft



Level 2



Level 3 to 6



Similar Units

205, 305, 505, 605



KEY MARKETING

The builder reserves the right to make modifications or substitutions to information contained herein. Dimensions, sizes, specifications, layouts, materials, and prices are approximate only, and are subject to changes. Floorplan may be mirror images/reversed depending on the unit number.



Unit Plan B5

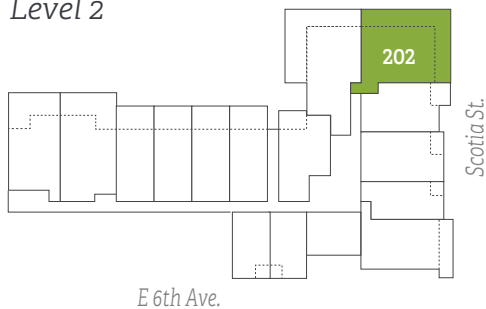
2 bedrooms + work space

Interior: 890-895 sq ft + Exterior: 173-470 sq ft

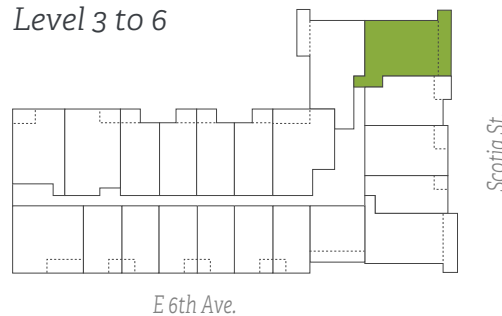
Total: 1063-1365 sq ft



Level 2



Level 3 to 6



Similar Units

202, 302, 502, 602



KEY MARKETING

The builder reserves the right to make modifications or substitutions to information contained herein. Dimensions, sizes, specifications, layouts, materials, and prices are approximate only, and are subject to changes. Floorplan may be mirror images/reversed depending on the unit number.



Unit Plan B6

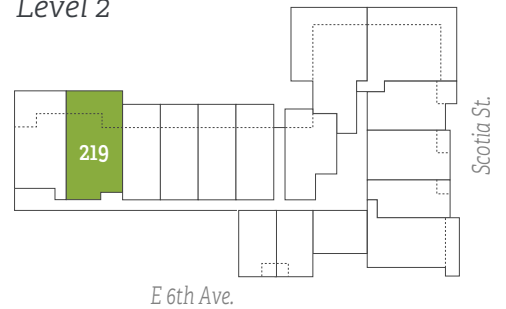
2 bedrooms + work space

Interior: 890 sq ft + Exterior: 53-306 sq ft

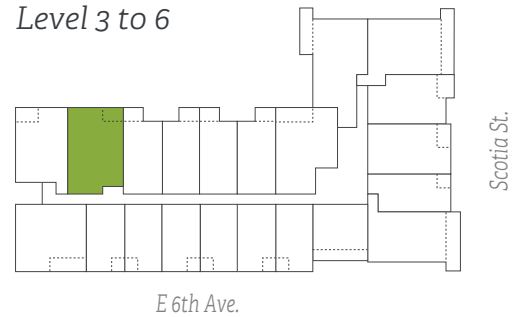
Total: 943-1196 sq ft



Level 2



Level 3 to 6



Similar Units

219, 319, 519, 619



KEY MARKETING

The builder reserves the right to make modifications or substitutions to information contained herein. Dimensions, sizes, specifications, layouts, materials, and prices are approximate only, and are subject to changes. Floorplan may be mirror images/reversed depending on the unit number.

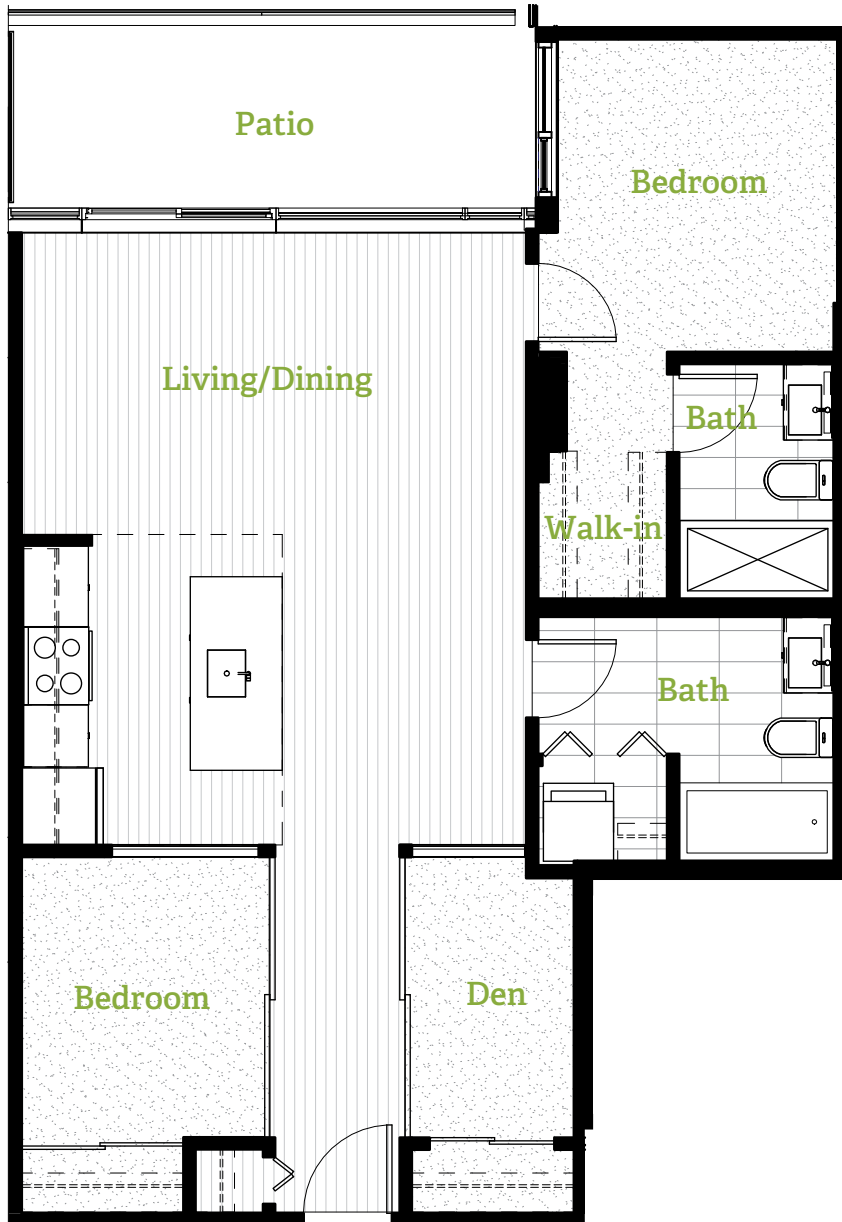


Unit Plan C

2 bedrooms + den

Interior: 850 sq ft + Exterior: 97-108 sq ft

Total: 947-958 sq ft



Level 3 to 6



Similar Units
325, 525, 625



KEY MARKETING

The builder reserves the right to make modifications or substitutions to information contained herein. Dimensions, sizes, specifications, layouts, materials, and prices are approximate only, and are subject to changes. Floorplan may be mirror images/reversed depending on the unit number.



Unit Plan D

2 bedrooms + den + work space

Interior: 820 sq ft + Exterior: 86-89 sq ft

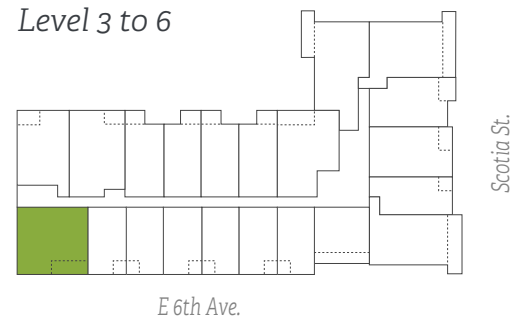
Total: 906-909 sq ft



Similar Units
317, 517, 617



Level 3 to 6



KEY MARKETING

The builder reserves the right to make modifications or substitutions to information contained herein. Dimensions, sizes, specifications, layouts, materials, and prices are approximate only, and are subject to changes. Floorplan may be mirror images/reversed depending on the unit number.



Unit Plan E

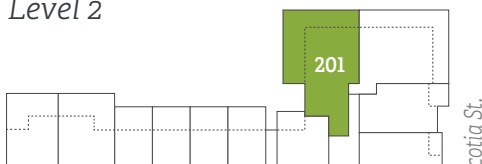
3 bedrooms

Interior: 975 sq ft + Exterior: 117-456 sq ft

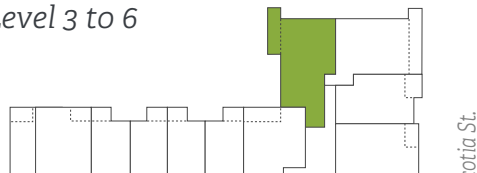
Total: 1092-1431 sq ft



Level 2



Level 3 to 6



KEY MARKETING

The builder reserves the right to make modifications or substitutions to information contained herein. Dimensions, sizes, specifications, layouts, materials, and prices are approximate only, and are subject to changes. Floorplan may be mirror images/reversed depending on the unit number.



Unit Plan PH9

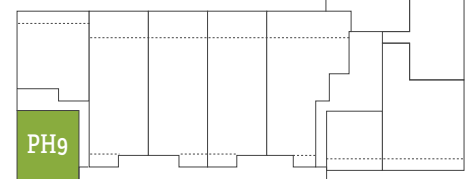
1 bedroom

Interior: 650 sq ft + Exterior: 191 sq ft

Total: 841 sq ft



Penthouse Level



Scotia St.

E 6th Ave.



KEY MARKETING

The builder reserves the right to make modifications or substitutions to information contained herein. Dimensions, sizes, specifications, layouts, materials, and prices are approximate only, and are subject to changes. Floorplan may be mirror images/reversed depending on the unit number.

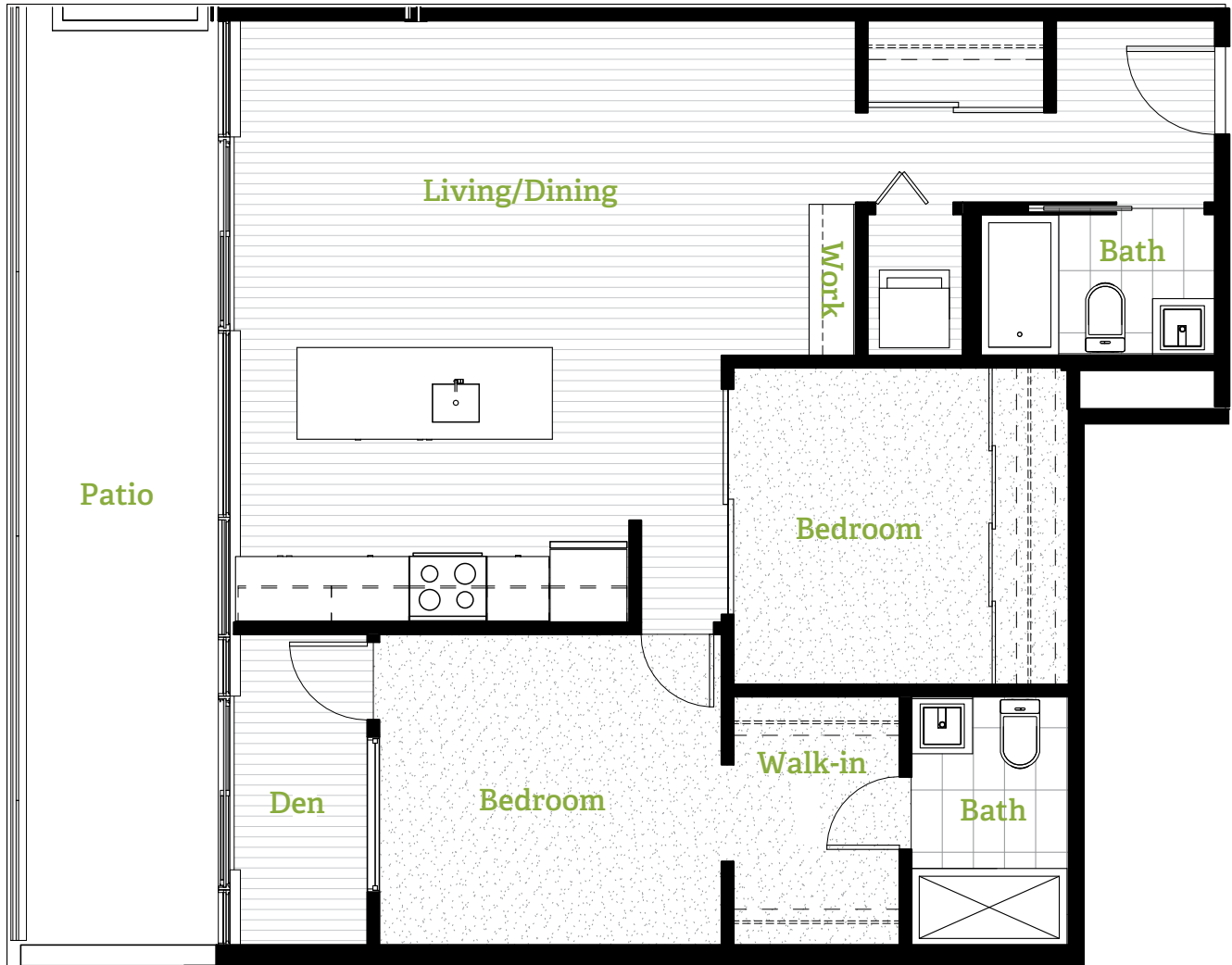


Unit Plan PH8

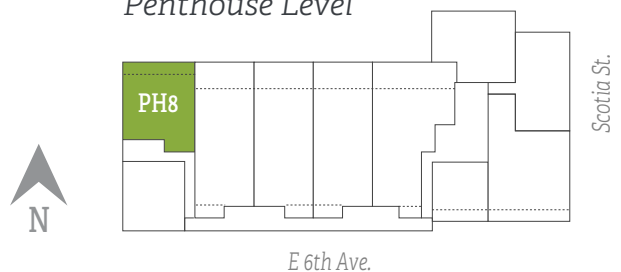
2 bedrooms + den

Interior: 925 sq ft + Exterior: 111 sq ft

Total: 1036 sq ft



Penthouse Level



KEY MARKETING

The builder reserves the right to make modifications or substitutions to information contained herein. Dimensions, sizes, specifications, layouts, materials, and prices are approximate only, and are subject to changes. Floorplan may be mirror images/reversed depending on the unit number.

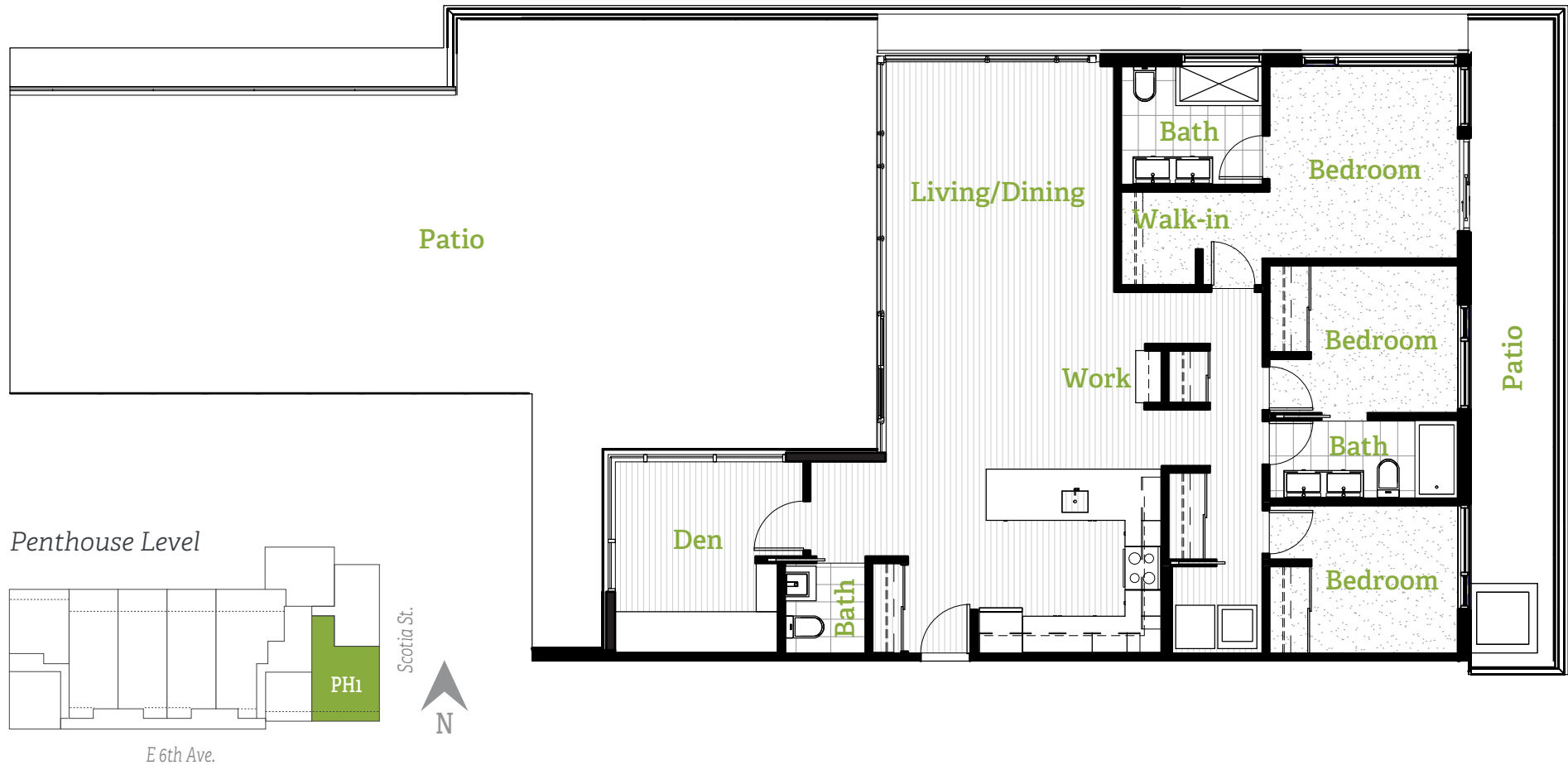


Unit Plan PH1

3 bedrooms + den

Interior: 1380 sq ft + Exterior: 1087 sq ft

Total: 2467 sq ft



KEY MARKETING

The builder reserves the right to make modifications or substitutions to information contained herein. Dimensions, sizes, specifications, layouts, materials, and prices are approximate only, and are subject to changes. Floorplan may be mirror images/reversed depending on the unit number.

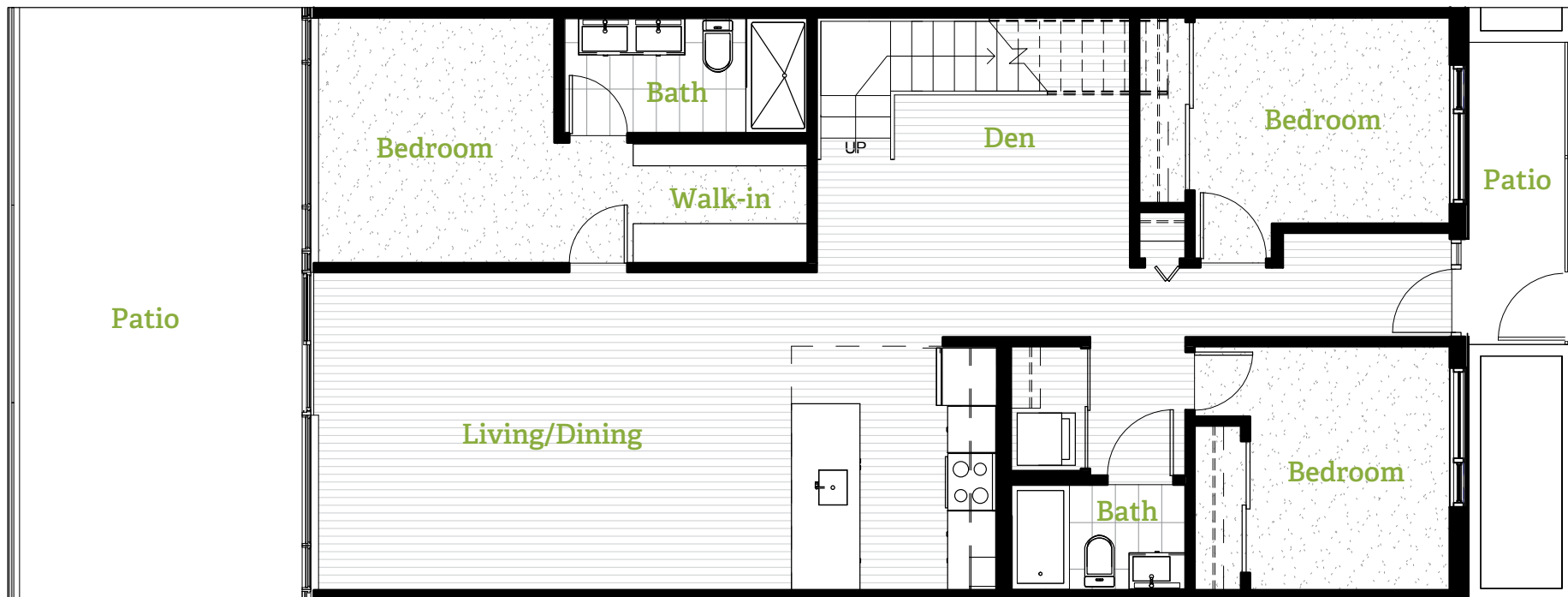


Unit Plan PH5, PH6, PH7

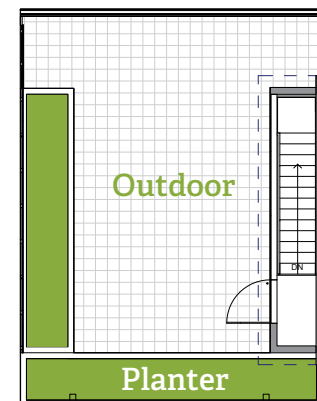
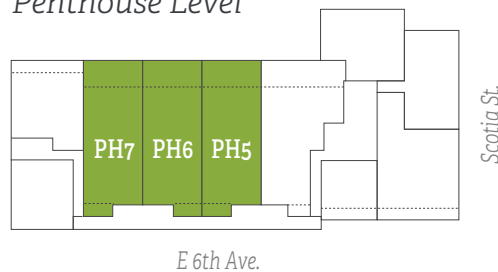
3 bedrooms + den

Interior: 1280 sq ft + Exterior: 805-1115 sq ft

Total: 2085-2395 sq ft



Penthouse Level



KEY MARKETING

The builder reserves the right to make modifications or substitutions to information contained herein. Dimensions, sizes, specifications, layouts, materials, and prices are approximate only, and are subject to changes. Floorplan may be mirror images/reversed depending on the unit number.



Unit Plan PH3

3 bedrooms + den

Interior: 1325 sq ft + Exterior: 1241 sq ft

Total: 2566 sq ft



KEY MARKETING

The builder reserves the right to make modifications or substitutions to information contained herein. Dimensions, sizes, specifications, layouts, materials, and prices are approximate only, and are subject to changes. Floorplan may be mirror images/reversed depending on the unit number.