

BE THE FIRST TO SAY HELLO.

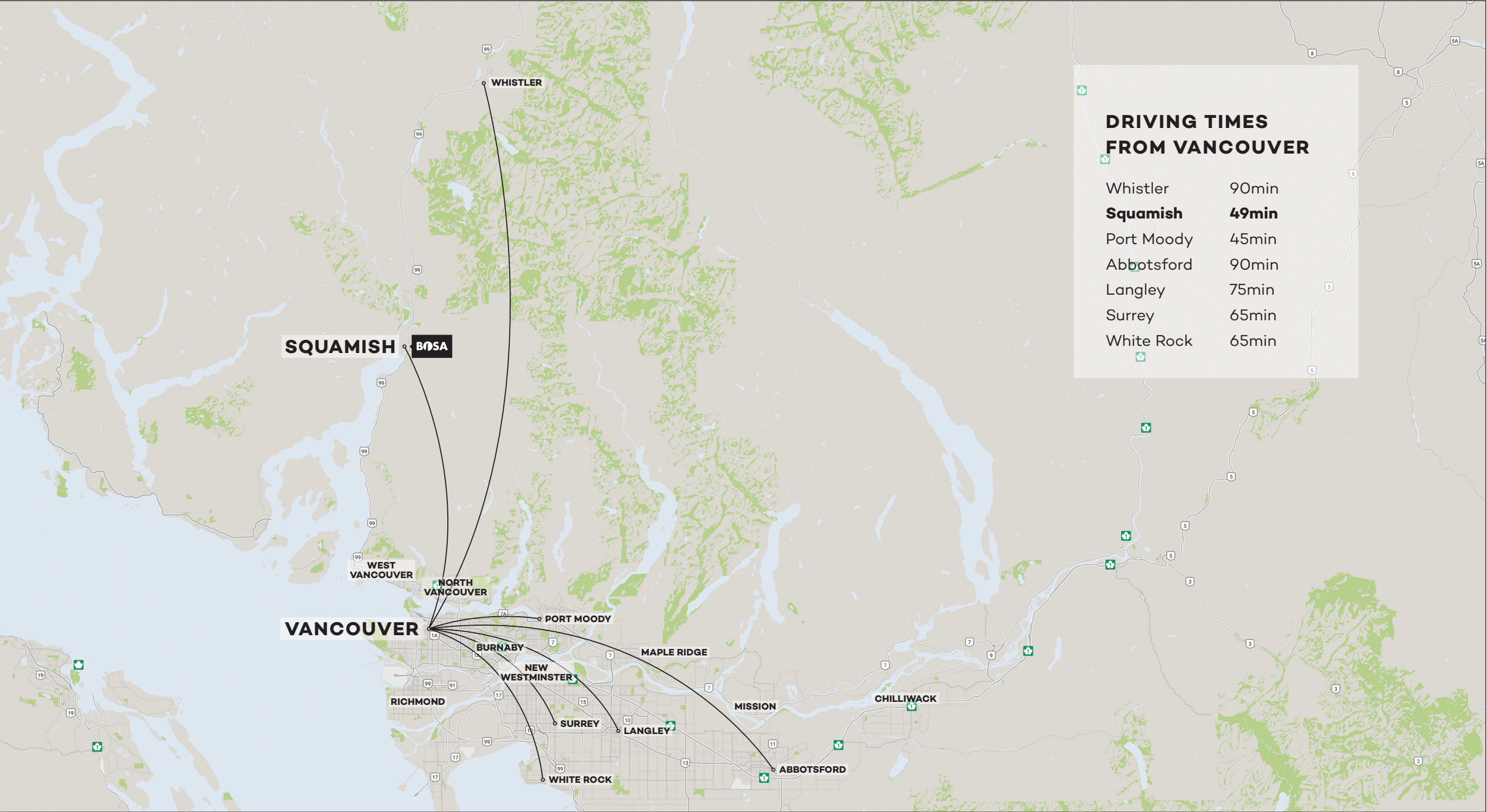
SQUAMISH INFORMATION KIT





OWN HERE.

MASTER-PLAN



**DRIVING TIMES
FROM VANCOUVER**

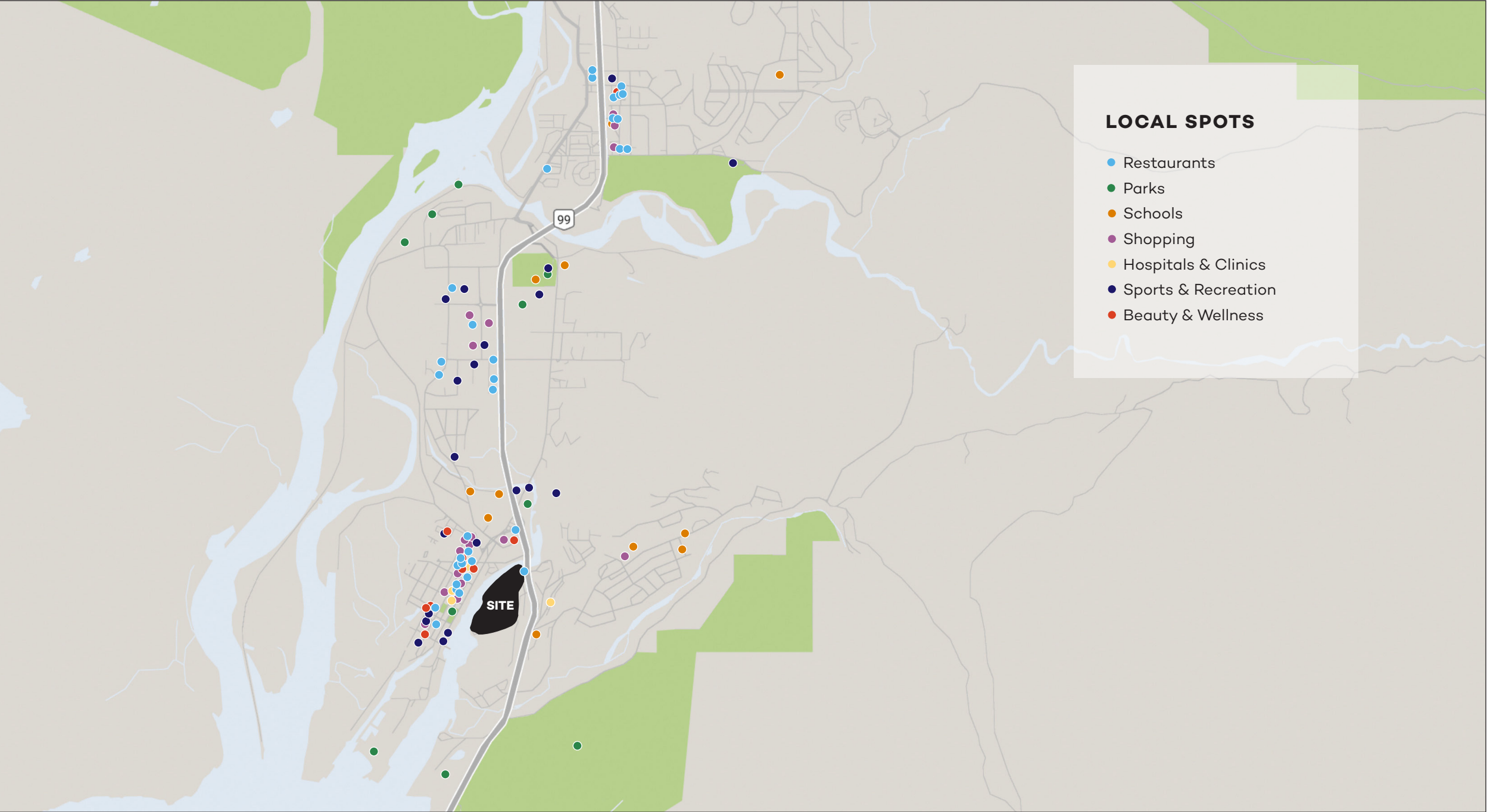
Whistler	90min
Squamish	49min
Port Moody	45min
Abbotsford	90min
Langley	75min
Surrey	65min
White Rock	65min



IT'S CLOSER THAN YOU THINK

Whether you're a nine-to-fiver needing to get into town on the daily, or simply want easy access and a flexible lifestyle, Squamish offers access to Vancouver and beyond – in less time than you may imagine. Situated less than half way to Whistler, average rush hour drive times run less than 50minutes along the beautiful and relaxing Sea to Sky corridor.





LOCAL SPOTS

- Restaurants
- Parks
- Schools
- Shopping
- Hospitals & Clinics
- Sports & Recreation
- Beauty & Wellness



IN YOUR NEIGHBOURHOOD

From pubs to parks and culture to cuisine, Squamish and its surrounding communities offer a vast array of amenities that are increasing by the day. Although the region is most well-known for its world-class outdoor recreation, the city centre has come to boast an entrepreneurial spirit that benefits business owners and patrons alike. Squamish truly does have something for everyone.





A LONG TERM PLAN

At 53 acres, this master-planned waterfront community will boast over 950 homes, abundant amenities, a vibrant boardwalk, and a thriving retail centre – all connected by an extensive park and trail network, and even a pedestrian bridge linking to Downtown Squamish. With Phase 1 located centrally within the community, this early release of homes will enjoy the best this new neighbourhood has to offer.





- 1 Lobby, Reception, Community Board
- 2 Living room
- 3 Gymnasium
- 4 Storage
- 5 Fitness room
- 6 Change rooms
- 7 Climbing gym lobby
- 8 Climbing gym
- 9 Cafe
- 10 Pool
- 11 Pool equipment
- 12 Pool storage
- 13 Flex space
- 14 Day patio
- 15 Study area
- 16 Flex lounge
- 17 Sunset Patio
- 18 Caretaker
- 19 Storage
- 20 Gymnasium (below)
- 21 Climbing gym (below)



ABUNDANT WITH AMENITIES

At over 17,000 S.F., the future Amenity Centre will be the heart of this thriving community. Whether you're looking to soak up the sun by the pool, sweat it out in the fitness facilities, or find the perfect space to socialize or work – this complete building will have what you're looking for, and will be the perfect extension of your new home.

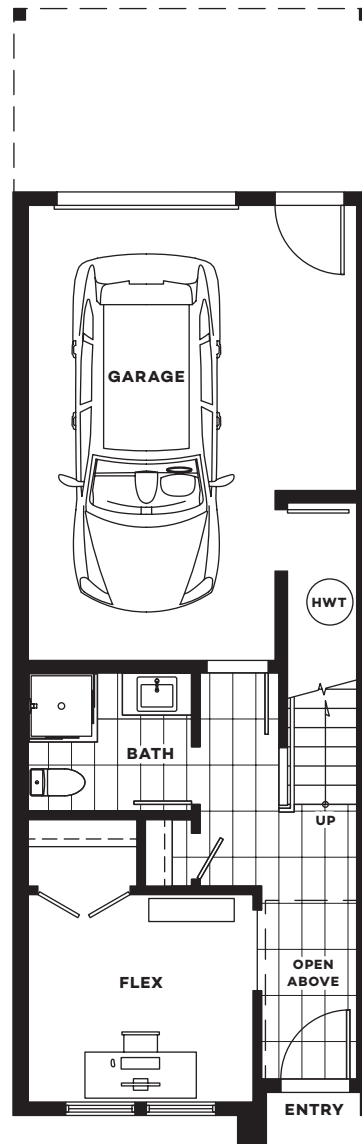


- Modern, Scandinavian-inspired architecture with clean lines and a bold materials palette
- Refined colour schemes in Light, Medium and Dark, to allow for personalization of home finishes
- Expansive windows and outdoor spaces, designed to celebrate the beauty of the natural setting
- Generous, open-plan living spaces with 9’ ceilings on the main floor
- Gourmet kitchens with stainless steel appliances and plenty of convenient storage
- Spacious garages that accommodate storage of vehicles and so much more

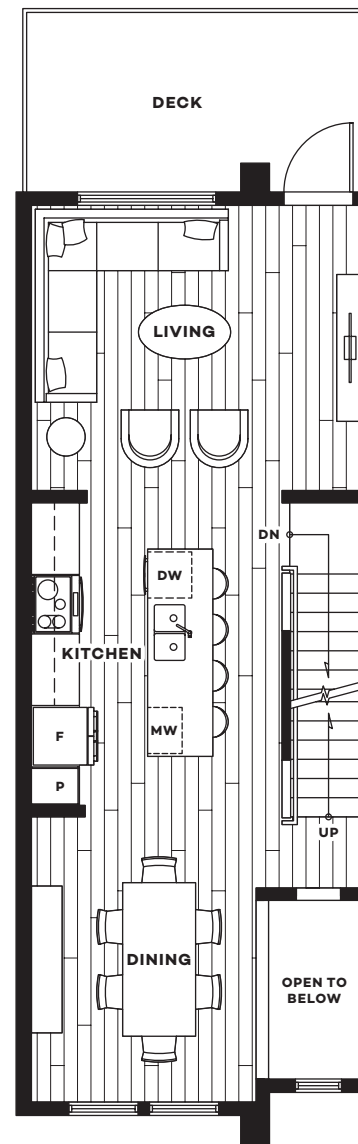


HOME SPECIFICATIONS

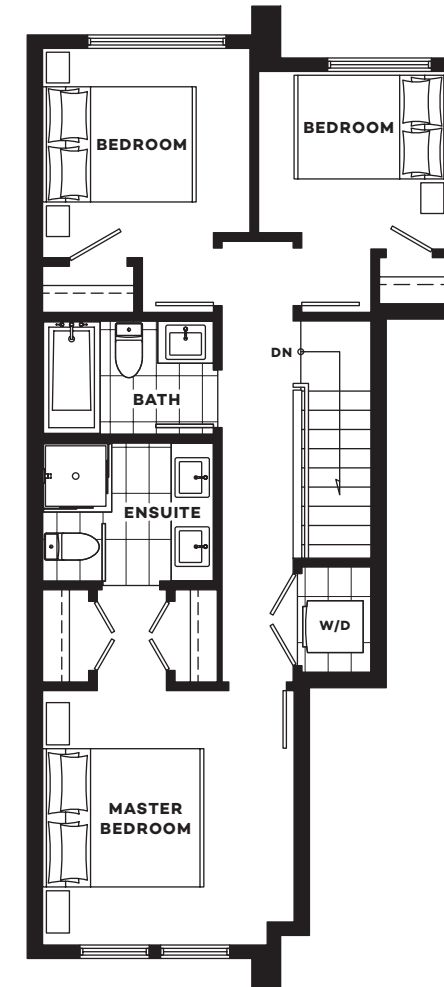




LOWER FLOOR



MAIN FLOOR



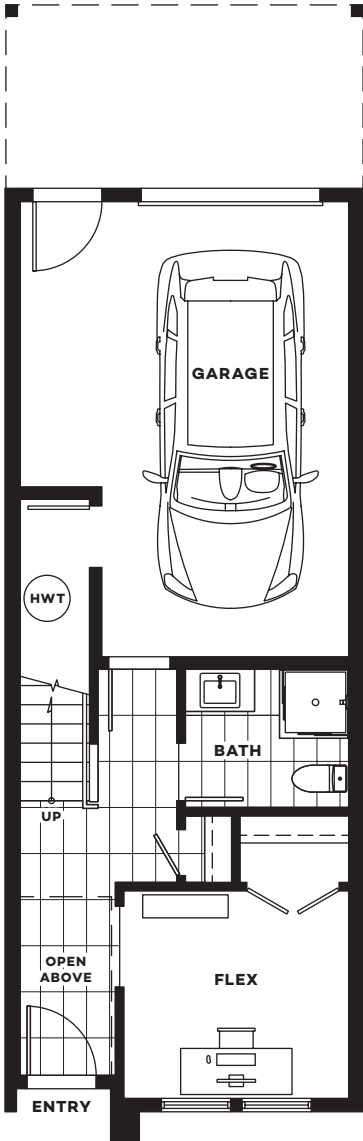
UPPER FLOOR



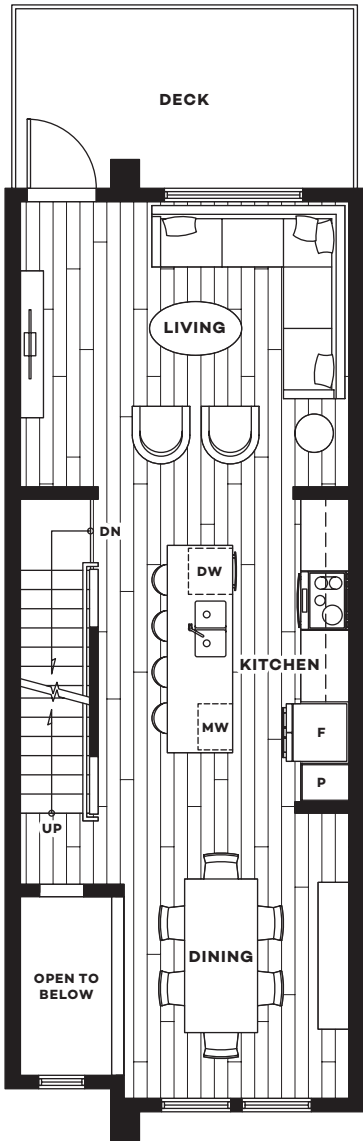
A1A THREE BEDROOM + FLEX

INTERIOR	1464 S.F.
DECK	120 S.F.
TOTAL	1584 S.F.

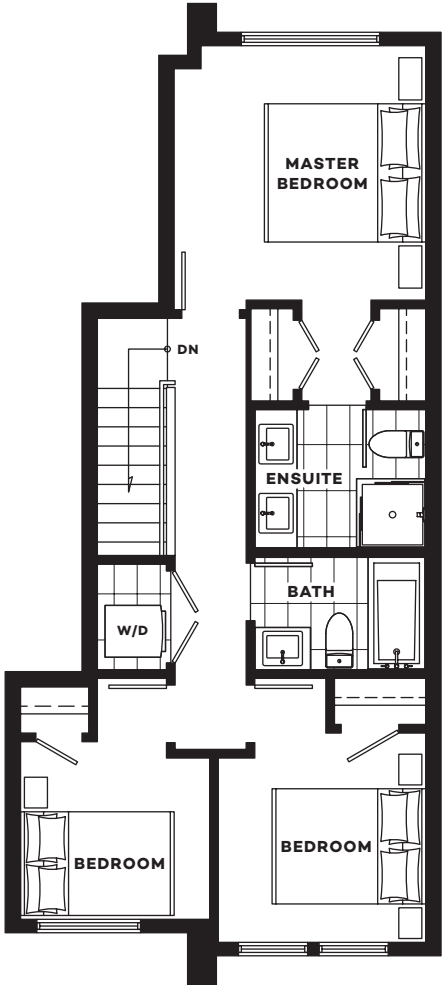




LOWER FLOOR



MAIN FLOOR



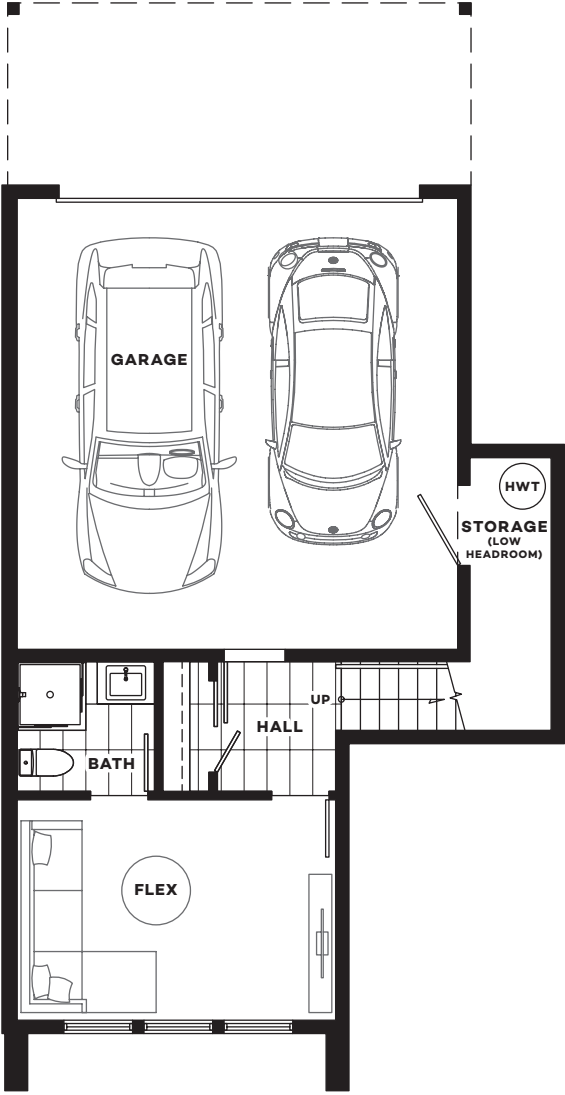
UPPER FLOOR



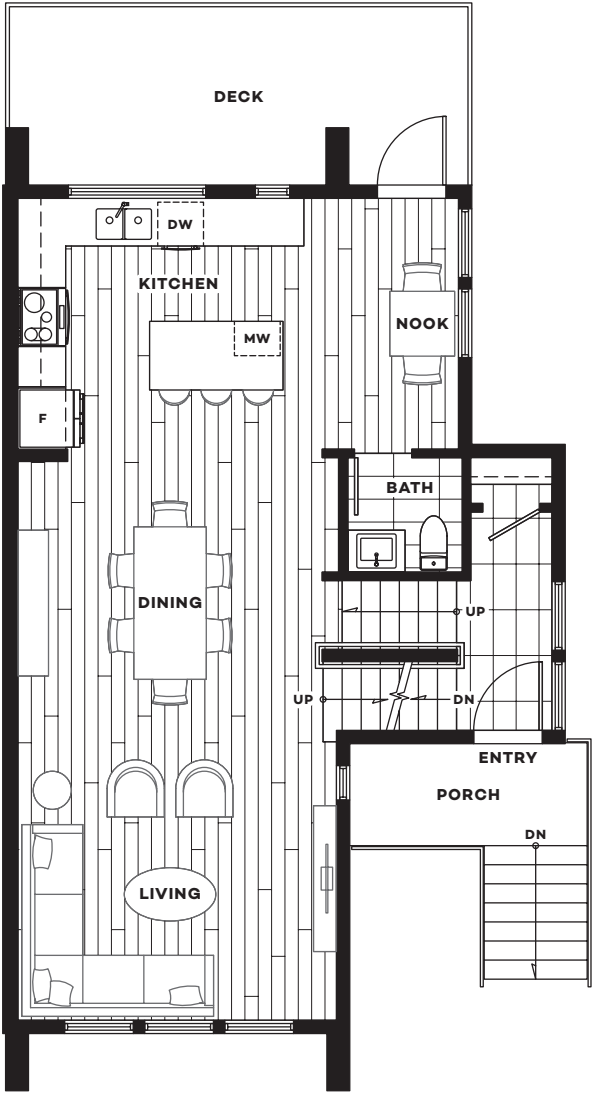
A1B **THREE BEDROOM + FLEX**

INTERIOR	1464 S.F.
DECK	120 S.F.
TOTAL	1584 S.F.

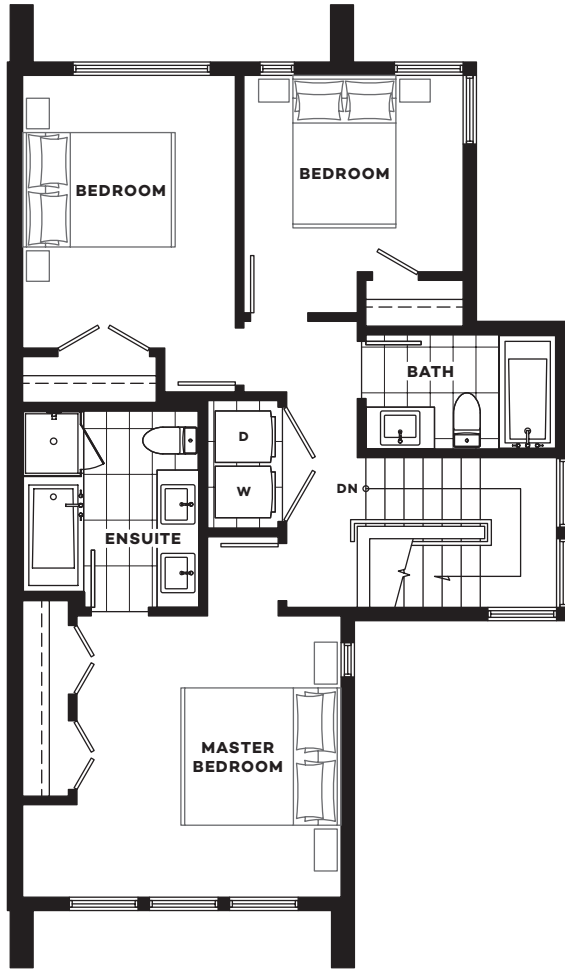




LOWER FLOOR



MAIN FLOOR



UPPER FLOOR

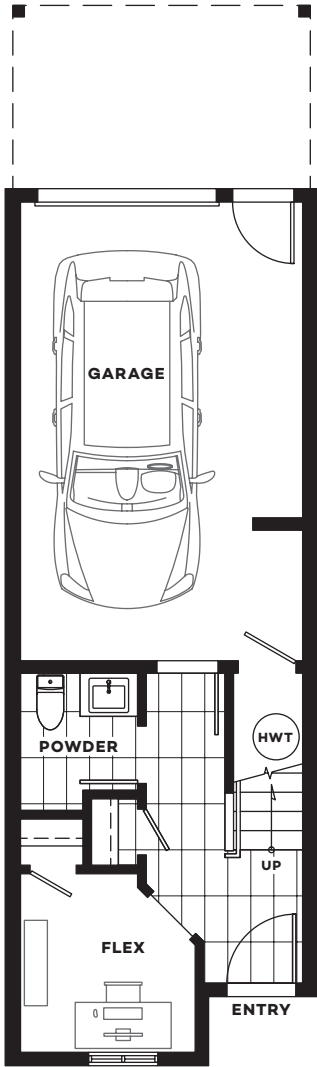


B THREE BEDROOM + FLEX

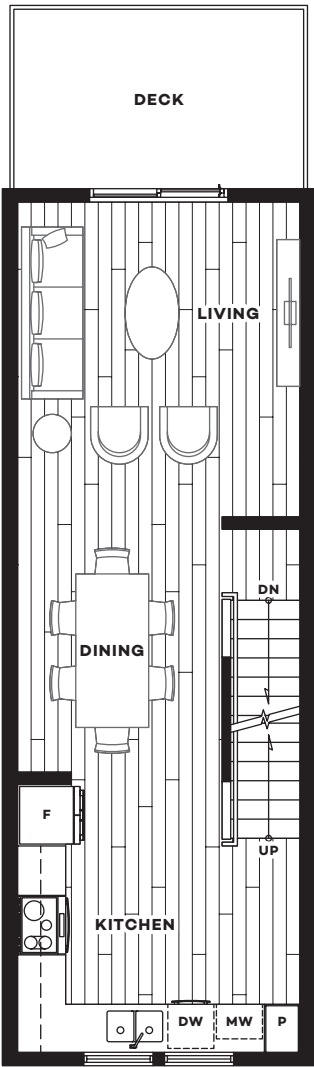
INTERIOR	1785 S.F.
DECK	156 S.F.
TOTAL	1941 S.F.



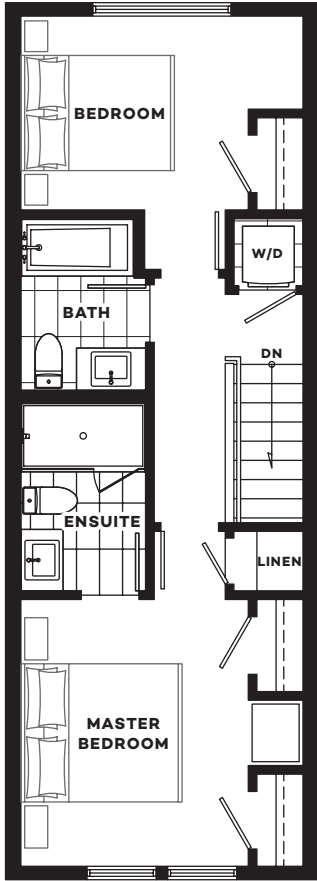
The Developer reserves the right to make changes and modifications to the information contained herein at any time. Dimensions, sizes, specifications, layouts, and materials are approximate only and subject to change without notice. Window sizes, ceiling heights, layouts, configurations, spandrel panels may vary from home to home. For further information, please contact the sales office at 1-800-441-1111.



LOWER FLOOR



MAIN FLOOR



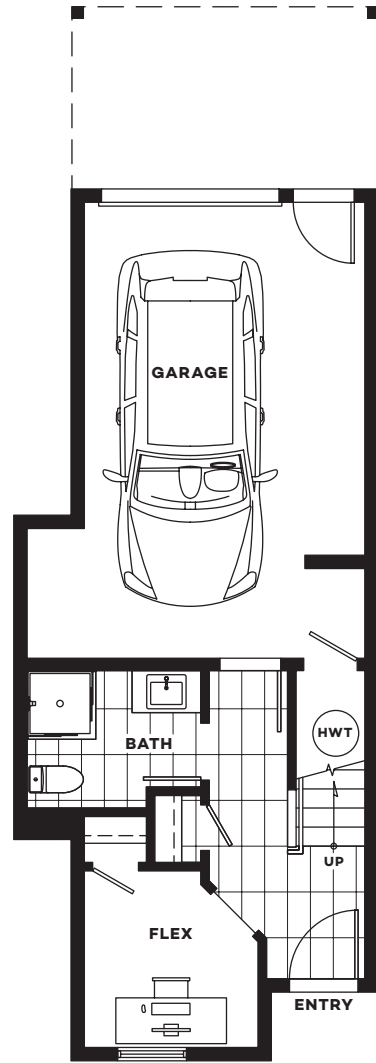
UPPER FLOOR



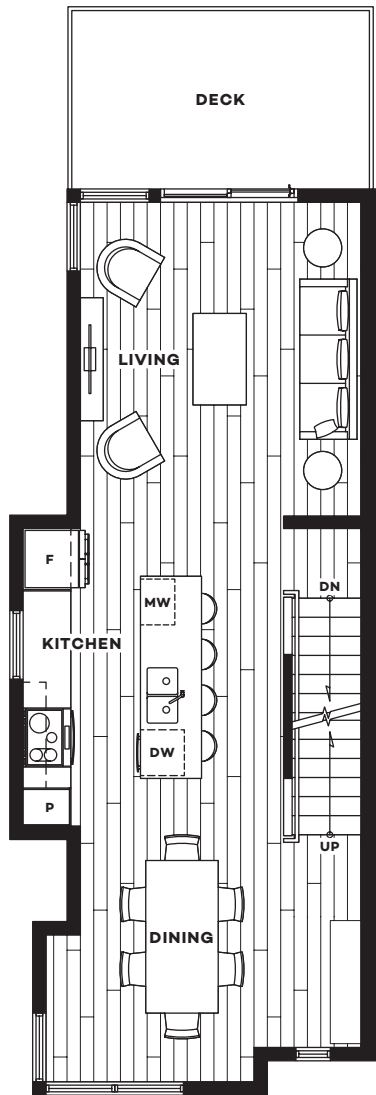
C1 TWO BEDROOM + FLEX

INTERIOR	1199 S.F.
DECK	104 S.F.
TOTAL	1303 S.F.

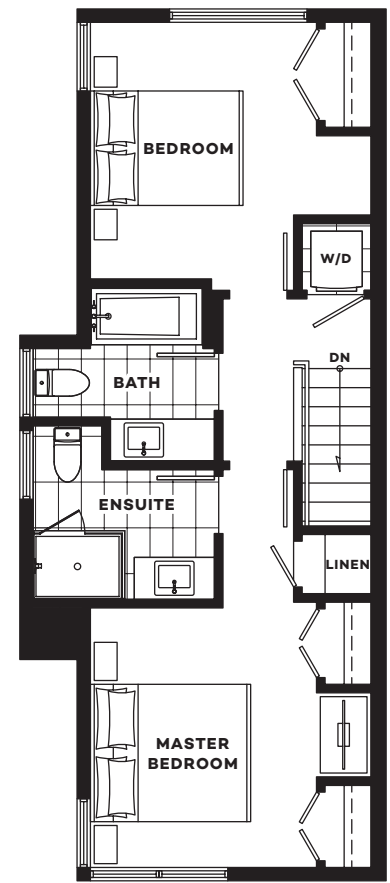




LOWER FLOOR



MAIN FLOOR



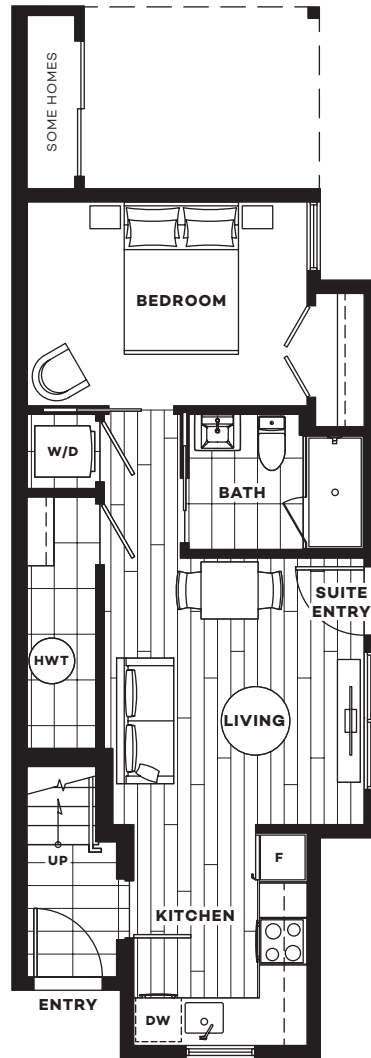
UPPER FLOOR



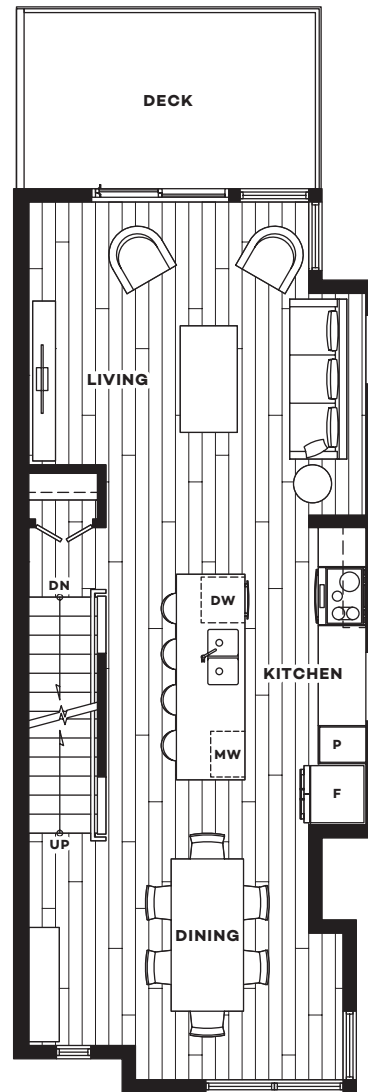
C3 TWO BEDROOM + FLEX

INTERIOR	1328 S.F.
DECK	104 S.F.
TOTAL	1432 S.F.

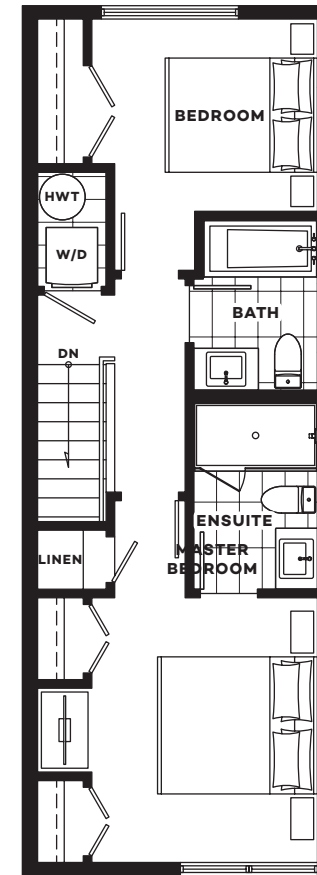




LOWER FLOOR



MAIN FLOOR



UPPER FLOOR



C4 TWO BEDROOM + SUITE

INTERIOR	1634 S.F.
DECK	104 S.F.
TOTAL	1738 S.F.





CARDERO, VANCOUVER



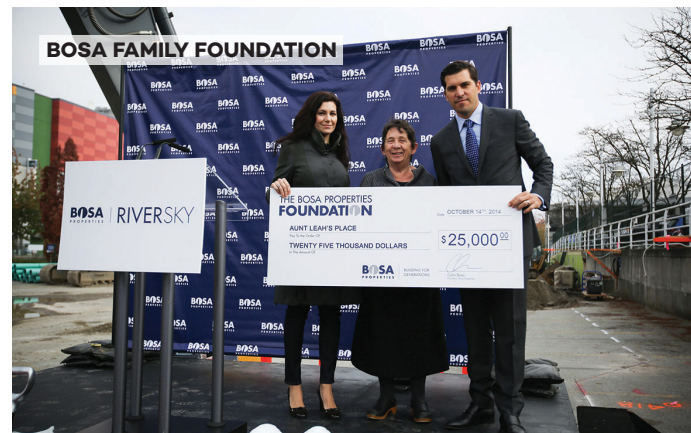
RIVERSKY, NEW WESTMINSTER



UPTOWN, COQUITLAM



LOUGHEED HEIGHTS, COQUITLAM



BOSA FAMILY FOUNDATION



MIRAMAR VILLAGE, WHITE ROCK



BEST OF ALL, IT'S A BOSA

For over 50 years, Bosa Properties has demonstrated an uncompromising commitment to quality construction and innovative design, which has cemented its reputation as one of the British Columbia's top developers. Working in partnership with longstanding local partner, Kingswood Properties, home owners can rest assured that the long term value of their investment will be maintained and ensured.



GET IN TOUCH

Contact us today to learn more about
upcoming sales opportunities.

604-559-7918

squamish@bosaproperties.com

bosaproperties.com

