

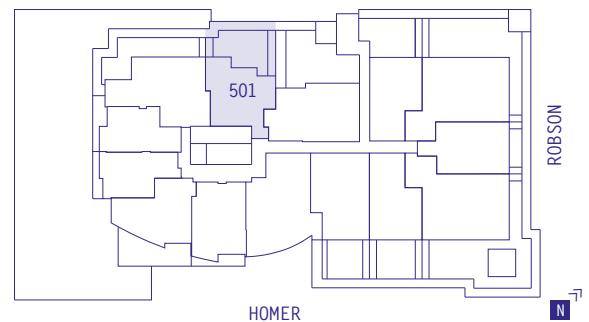
## SUITE 501

1 BEDROOM + DEN

Enclosed Area 706 sq ft

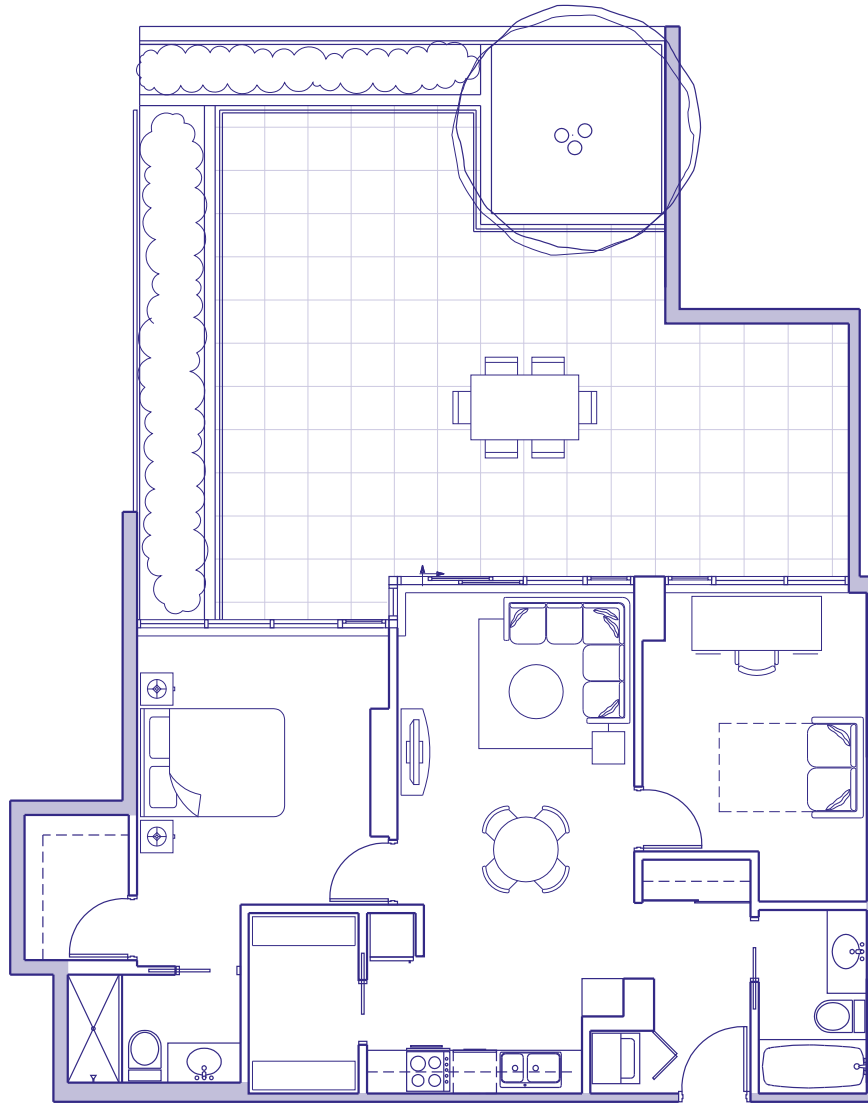
Terrace/Planter 544 sq ft

Total Area 1250 sq ft



\*Ceiling heights of approximately 8'6" over the majority of the living/dining and bedroom areas.

The Developer reserves the right to make modifications and changes to building design, specifications, features, ceiling heights and floorplans without notification. Room sets are for illustration purposes only. These matters will be governed entirely by the terms of the purchase contract and by the information provided for in the disclosure statement.



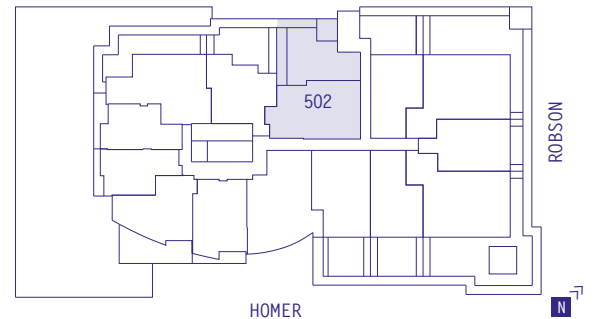
## SUITE 502

1 BEDROOM + DEN

Enclosed Area 868 sq ft

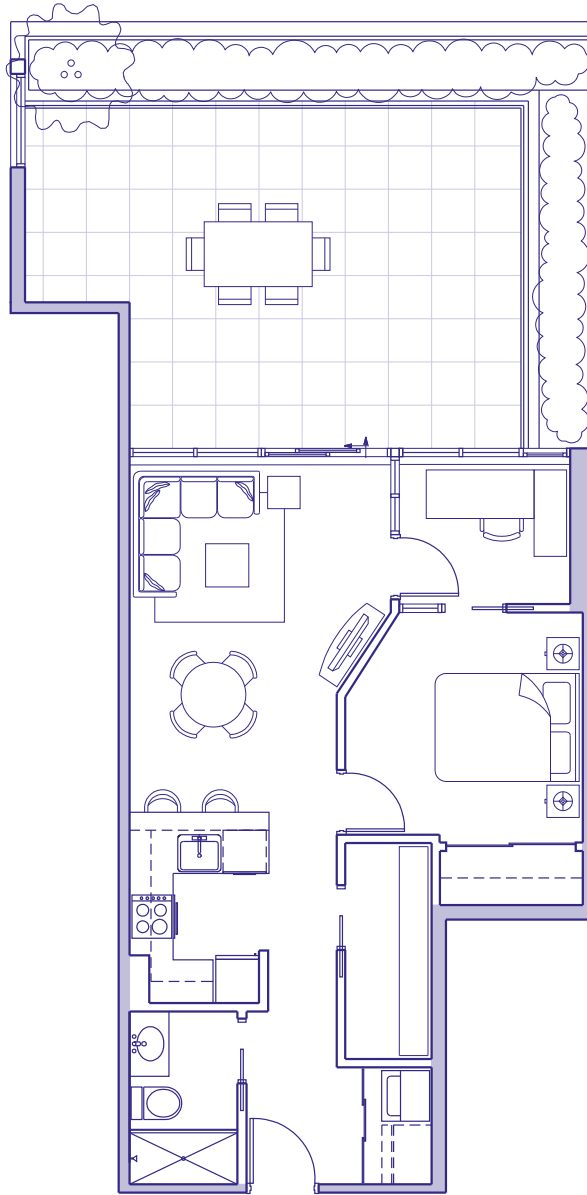
Terrace/Planter 755 sq ft

Total Area 1623 sq ft



\*Ceiling heights of approximately 8'6" over the majority of the living/dining and bedroom areas.

The Developer reserves the right to make modifications and changes to building design, specifications, features, ceiling heights and floorplans without notification. Room sets are for illustration purposes only. These matters will be governed entirely by the terms of the purchase contract and by the information provided for in the disclosure statement.



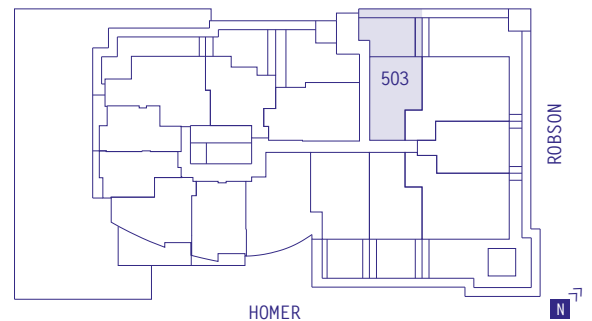
## SUITE 503

1 BEDROOM + DEN

Enclosed Area 655 sq ft

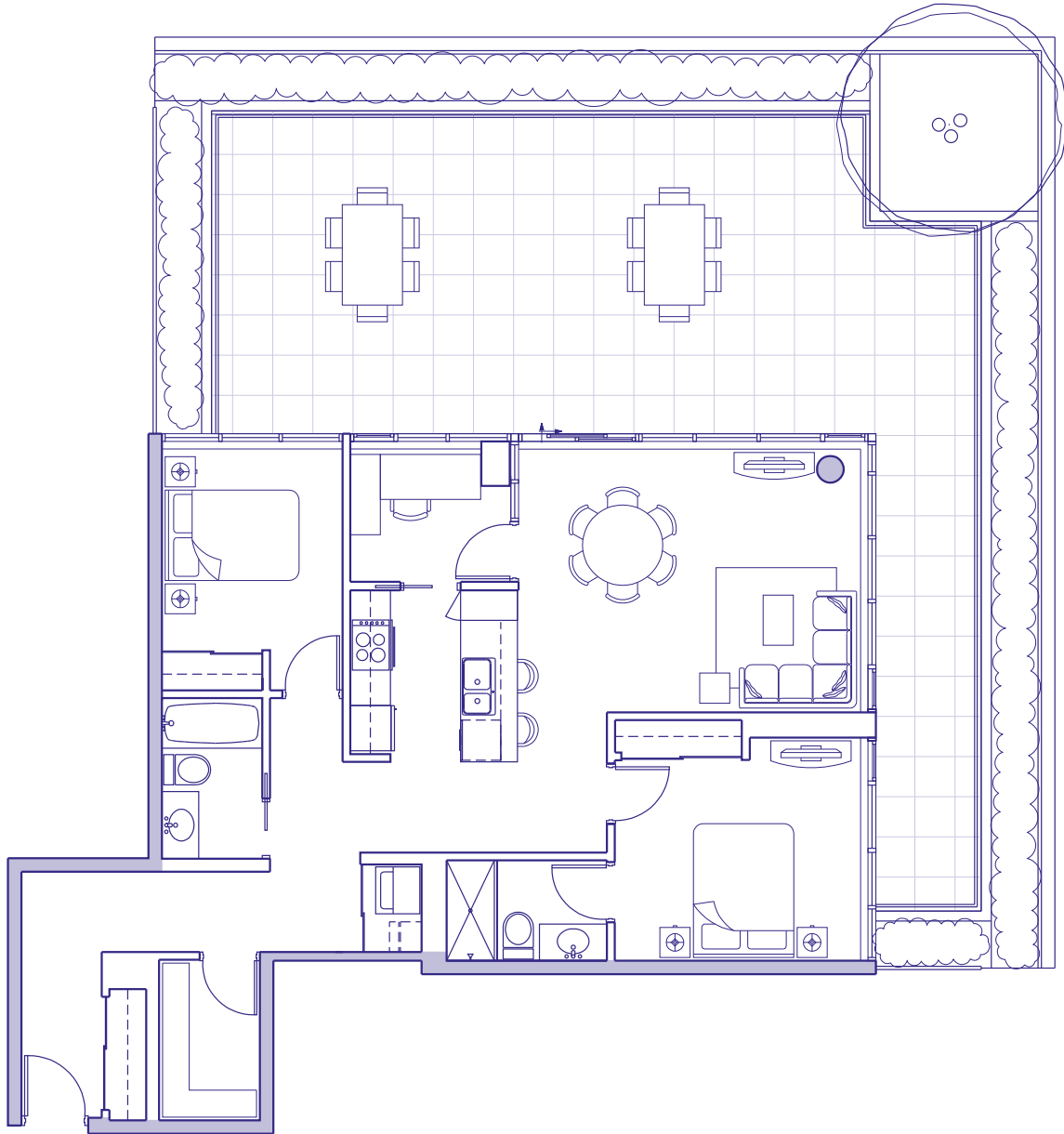
Terrace/Planter 491 sq ft

Total Area 1146 sq ft



\*Ceiling heights of approximately 8'6" over the majority of the living/dining and bedroom areas.

The Developer reserves the right to make modifications and changes to building design, specifications, features, ceiling heights and floorplans without notification. Room sets are for illustration purposes only. These matters will be governed entirely by the terms of the purchase contract and by the information provided for in the disclosure statement.



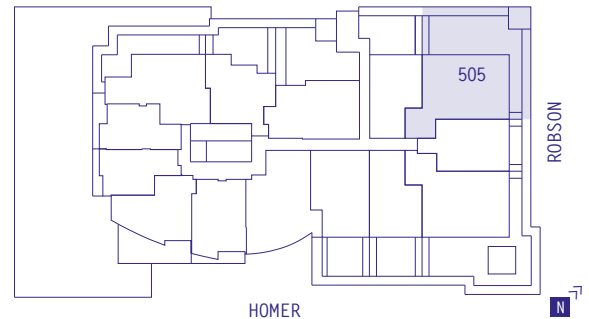
## SUITE 505

2 BEDROOM + DEN

Enclosed Area 1080 sq ft

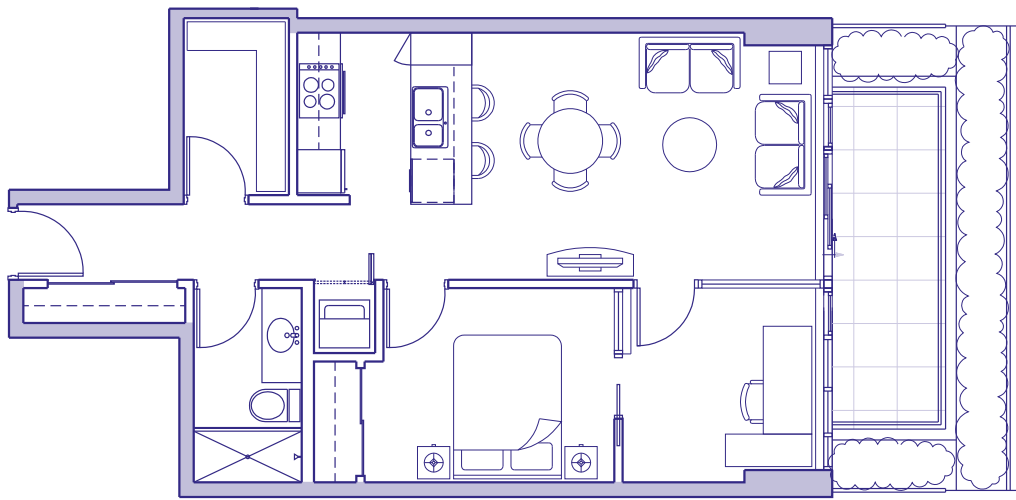
Terrace/Planter 1136 sq ft

Total Area 2216 sq ft



\*Ceiling heights of approximately 8'6" over the majority of the living/dining and bedroom areas.

The Developer reserves the right to make modifications and changes to building design, specifications, features, ceiling heights and floorplans without notification. Room sets are for illustration purposes only. These matters will be governed entirely by the terms of the purchase contract and by the information provided for in the disclosure statement.



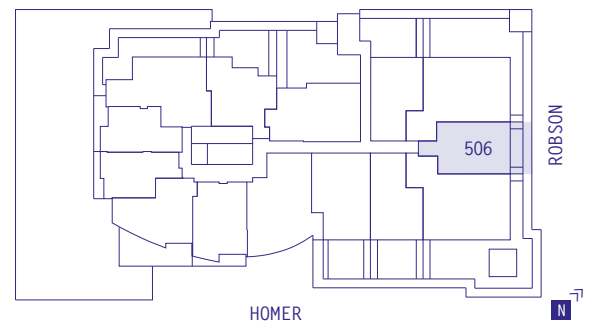
## SUITE 506

1 BEDROOM + DEN

Enclosed Area 696 sq ft

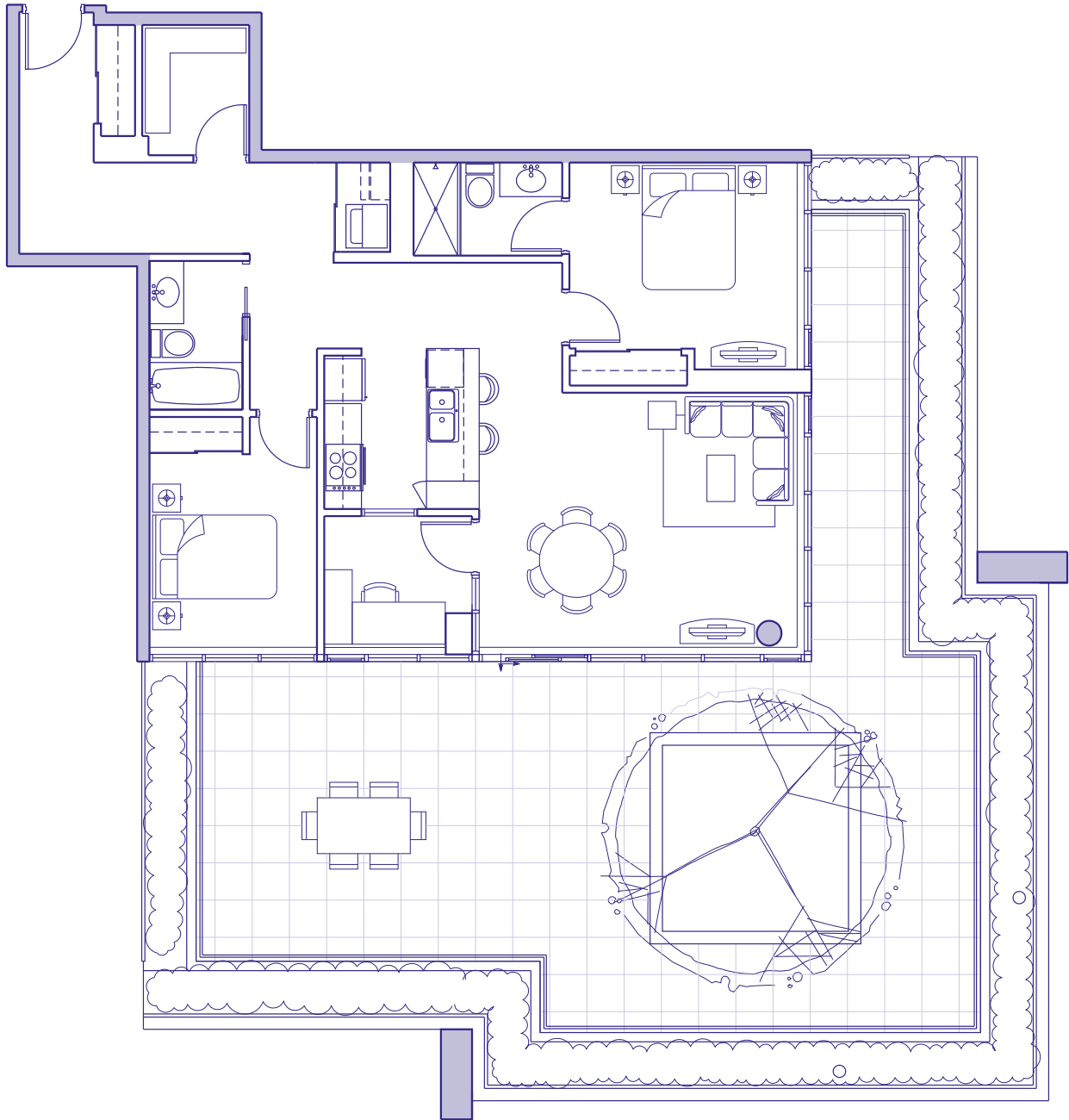
Terrace/Planter 196 sq ft

Total Area 892 sq ft



\*Ceiling heights of approximately 8'6" over the majority of the living/dining and bedroom areas.

The Developer reserves the right to make modifications and changes to building design, specifications, features, ceiling heights and floorplans without notification. Room sets are for illustration purposes only. These matters will be governed entirely by the terms of the purchase contract and by the information provided for in the disclosure statement.



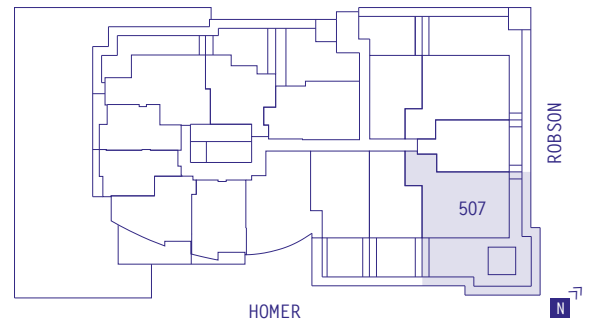
## SUITE 507

2 BEDROOM + DEN

Enclosed Area 1105 sq ft

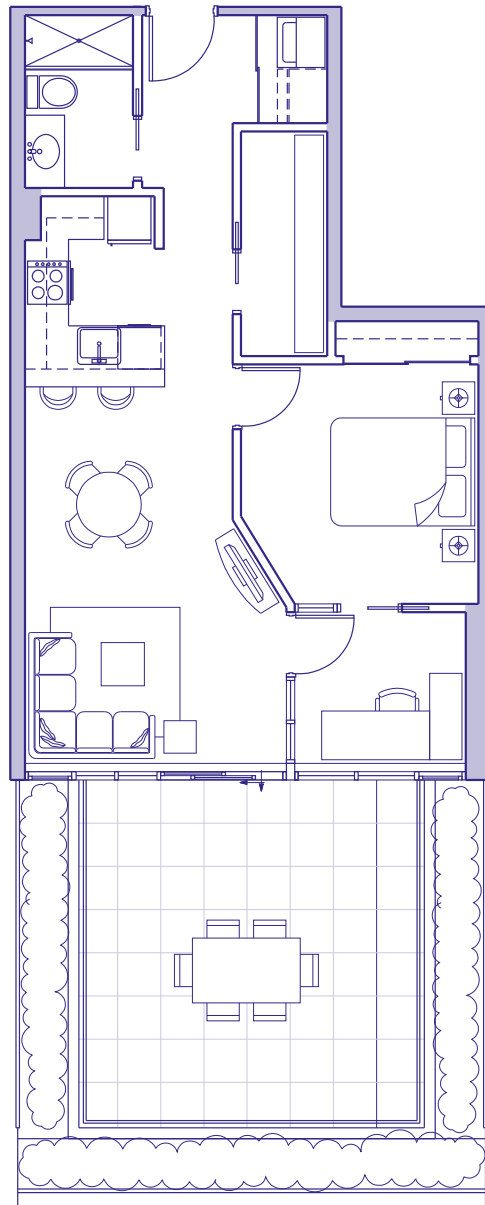
Terrace/Planter 1357 sq ft

Total Area 2462 sq ft



\*Ceiling heights of approximately 8'6" over the majority of the living/dining and bedroom areas.

The Developer reserves the right to make modifications and changes to building design, specifications, features, ceiling heights and floorplans without notification. Room sets are for illustration purposes only. These matters will be governed entirely by the terms of the purchase contract and by the information provided for in the disclosure statement.



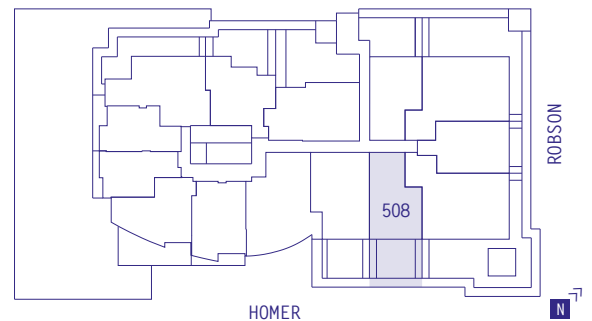
## SUITE 508

1 BEDROOM + DEN

Enclosed Area 675 sq ft

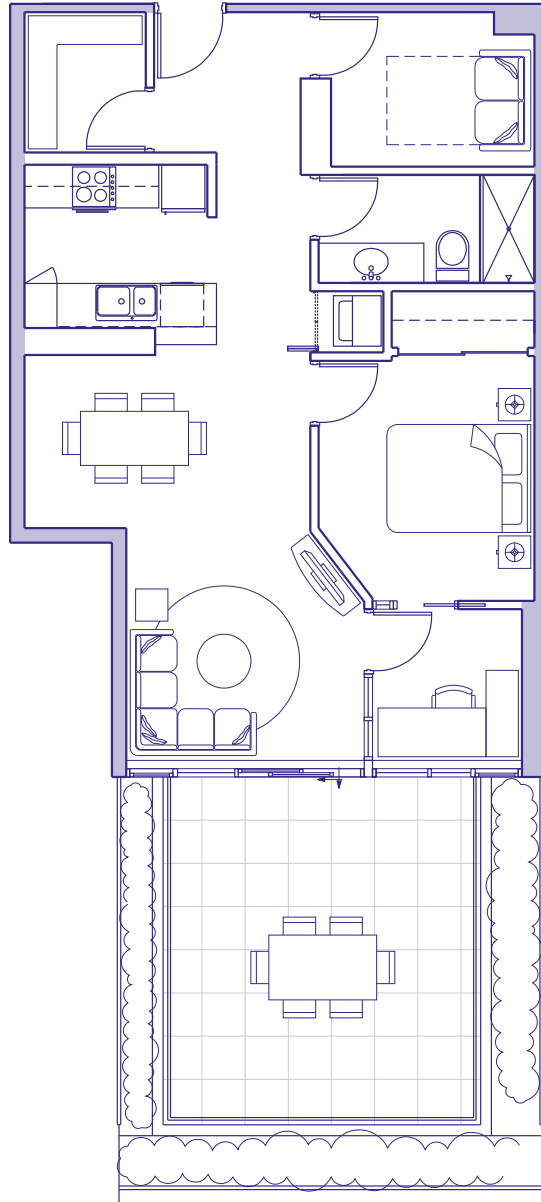
Terrace/Planter 437 sq ft

Total Area 1112 sq ft



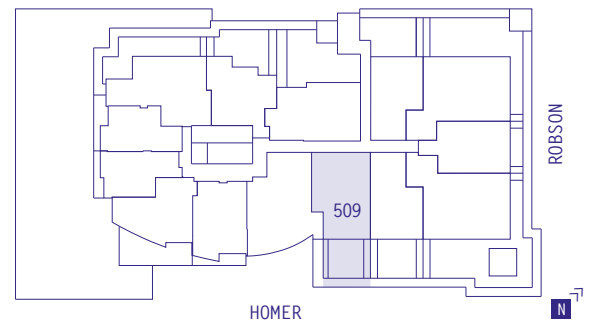
\*Ceiling heights of approximately 8'6" over the majority of the living/dining and bedroom areas.

The Developer reserves the right to make modifications and changes to building design, specifications, features, ceiling heights and floorplans without notification. Room sets are for illustration purposes only. These matters will be governed entirely by the terms of the purchase contract and by the information provided for in the disclosure statement.



## SUITE 509

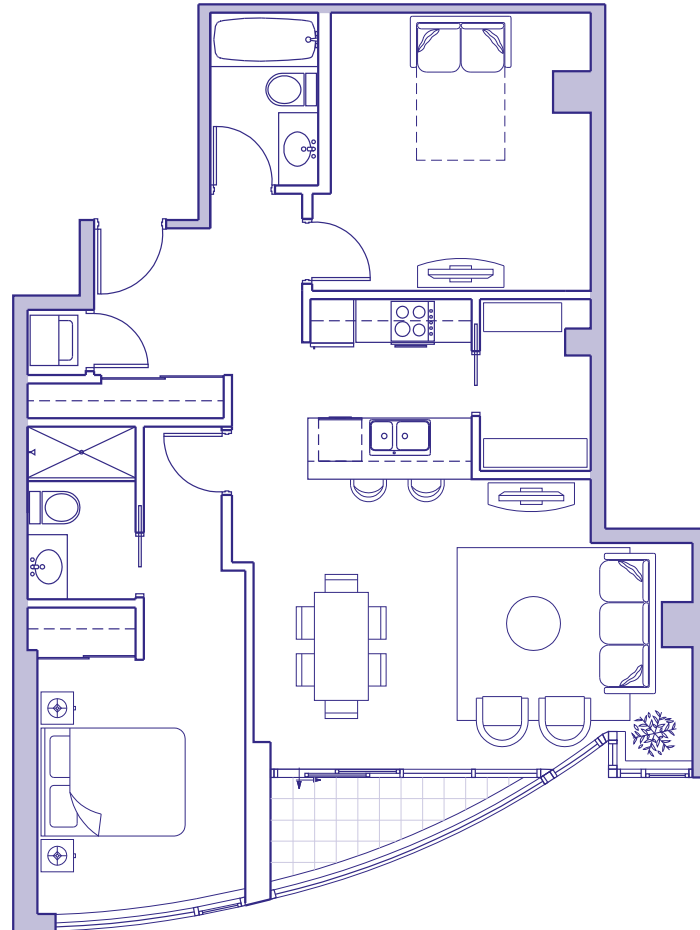
	1 BEDROOM + DEN + NOOK
Enclosed Area	807 sq ft
Terrace/Planter	394 sq ft
Total Area	1201 sq ft



\*Ceiling heights of approximately 8'6" over the majority of the living/dining and bedroom areas.

The Developer reserves the right to make modifications and changes to building design, specifications, features, ceiling heights and floorplans without notification. Room sets are for illustration purposes only. These matters will be governed entirely by the terms of the purchase contract and by the information provided for in the disclosure statement.





## SUITE 510

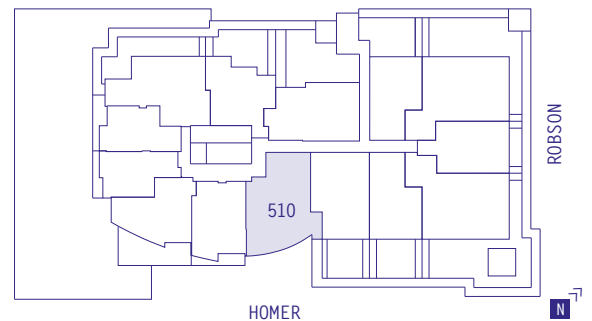
Also includes  
Suite 610

1 BEDROOM + DEN

Enclosed Area 993 sq ft

Balcony 42 sq ft

Total Area 1035 sq ft



\*Ceiling heights of approximately 8'6" over the majority of the living/dining and bedroom areas.

The Developer reserves the right to make modifications and changes to building design, specifications, features, ceiling heights and floorplans without notification. Room sets are for illustration purposes only. These matters will be governed entirely by the terms of the purchase contract and by the information provided for in the disclosure statement.



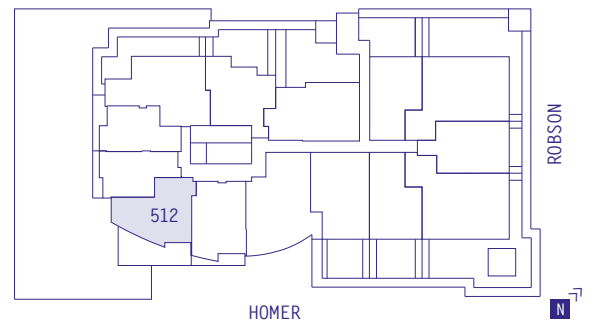
## SUITE 512

1 BEDROOM + DEN

Enclosed Area 690 sq ft

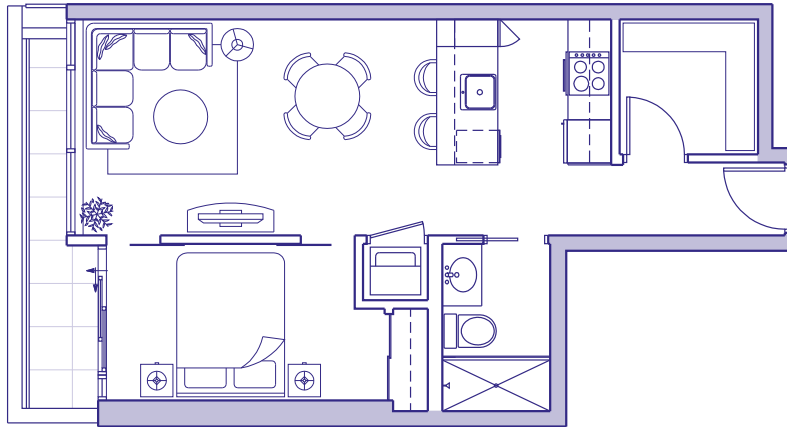
Terrace 338 sq ft

Total Area 1028 sq ft



\*Ceiling heights of approximately 8'6" over the majority of the living/dining and bedroom areas.

The Developer reserves the right to make modifications and changes to building design, specifications, features, ceiling heights and floorplans without notification. Room sets are for illustration purposes only. These matters will be governed entirely by the terms of the purchase contract and by the information provided for in the disclosure statement.



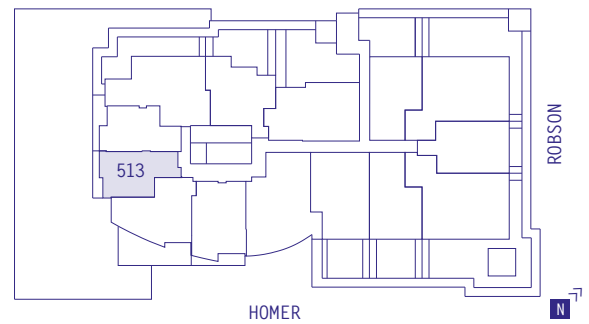
## SUITE 513

1 BEDROOM

Enclosed Area 524 sq ft

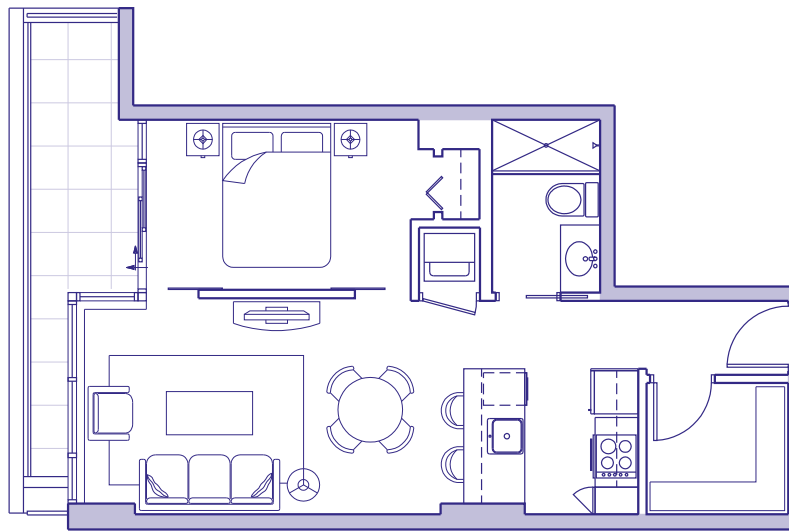
Balcony 56 sq ft

Total Area 580 sq ft



\*Ceiling heights of approximately 8'6" over the majority of the living/dining and bedroom areas.

The Developer reserves the right to make modifications and changes to building design, specifications, features, ceiling heights and floorplans without notification. Room sets are for illustration purposes only. These matters will be governed entirely by the terms of the purchase contract and by the information provided for in the disclosure statement.



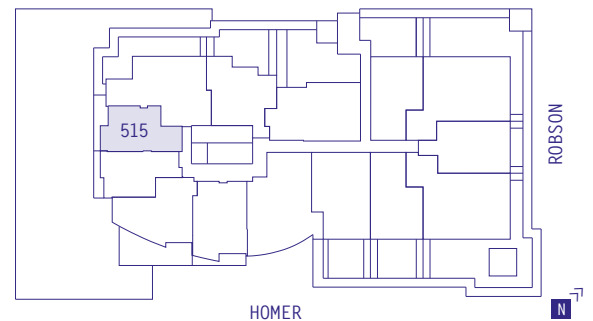
## SUITE 515

1 BEDROOM

Enclosed Area 533 sq ft

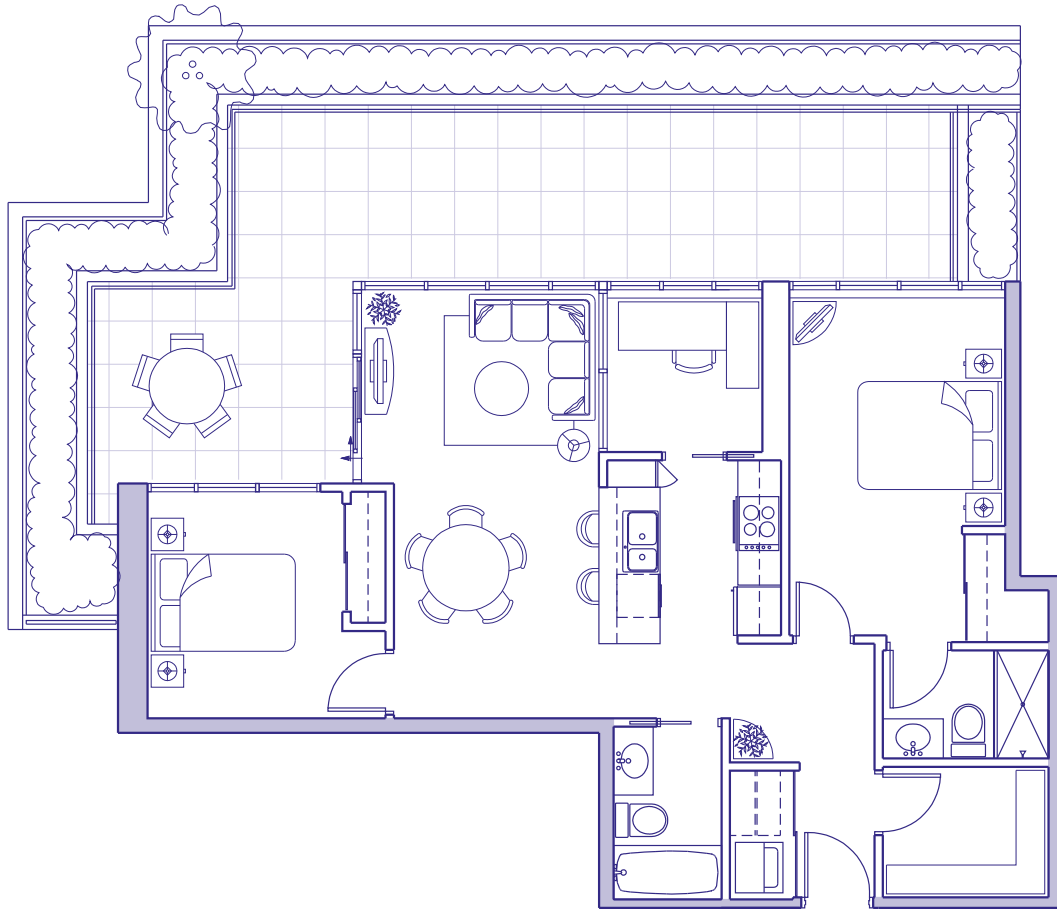
Balcony 89 sq ft

Total Area 622 sq ft



\*Ceiling heights of approximately 8'6" over the majority of the living/dining and bedroom areas.

The Developer reserves the right to make modifications and changes to building design, specifications, features, ceiling heights and floorplans without notification. Room sets are for illustration purposes only. These matters will be governed entirely by the terms of the purchase contract and by the information provided for in the disclosure statement.



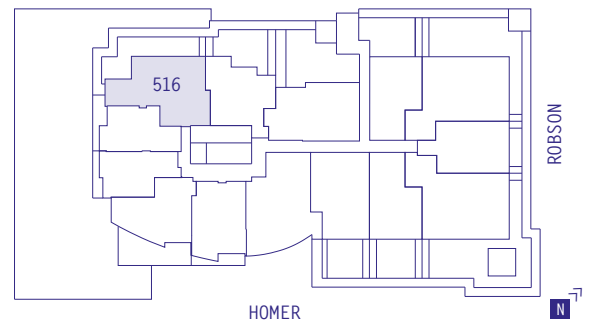
## SUITE 516

2 BEDROOM + DEN

Enclosed Area 939 sq ft

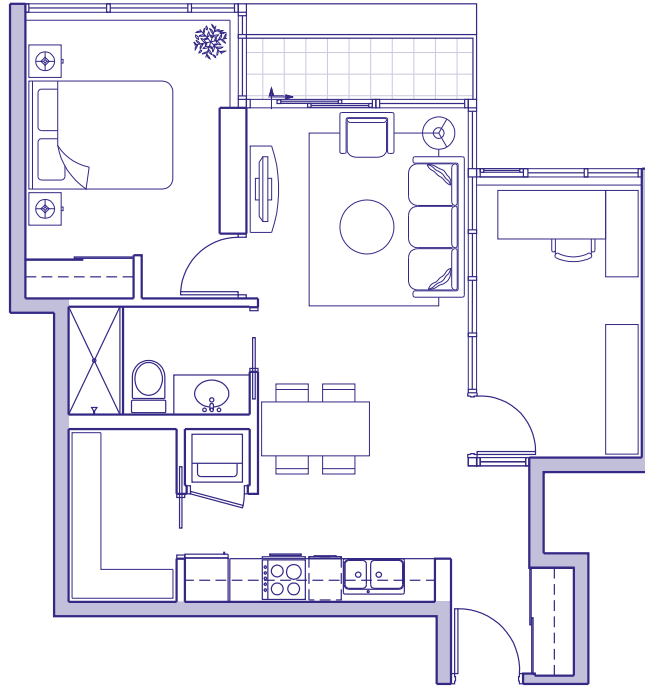
Terrace/Planter 667 sq ft

Total Area 1606 sq ft



\*Ceiling heights of approximately 8'6" over the majority of the living/dining and bedroom areas.

The Developer reserves the right to make modifications and changes to building design, specifications, features, ceiling heights and floorplans without notification. Room sets are for illustration purposes only. These matters will be governed entirely by the terms of the purchase contract and by the information provided for in the disclosure statement.



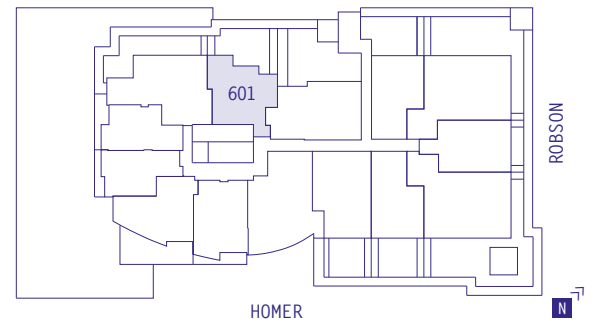
## SUITE 601

1 BEDROOM + DEN

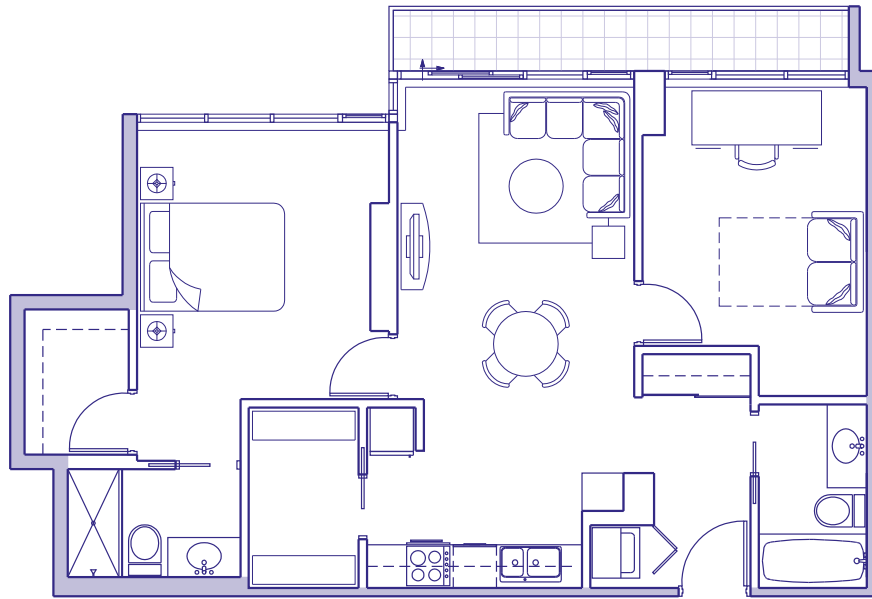
Enclosed Area 706 sq ft

Balcony 32 sq ft

Total Area 738 sq ft



\*Ceiling heights of approximately 8'6" over the majority of the living/dining and bedroom areas.



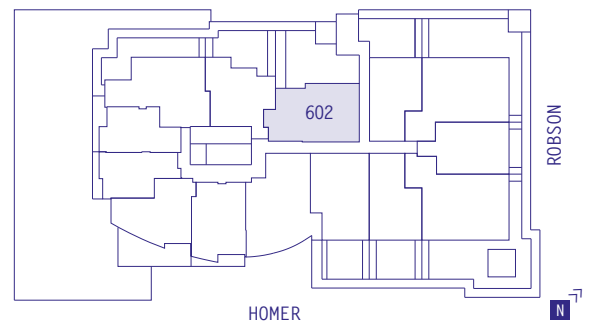
## SUITE 602

1 BEDROOM + DEN

Enclosed Area 868 sq ft

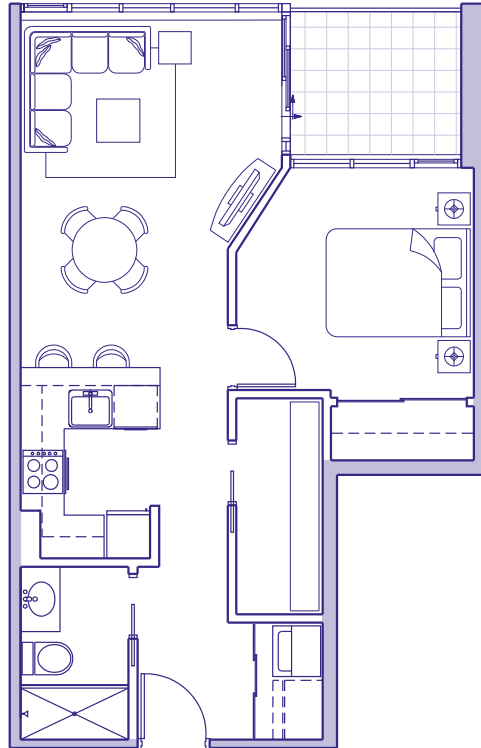
Balcony 70 sq ft

Total Area 938 sq ft



\*Ceiling heights of approximately 8'6" over the majority of the living/dining and bedroom areas.

The Developer reserves the right to make modifications and changes to building design, specifications, features, ceiling heights and floorplans without notification. Room sets are for illustration purposes only. These matters will be governed entirely by the terms of the purchase contract and by the information provided for in the disclosure statement.



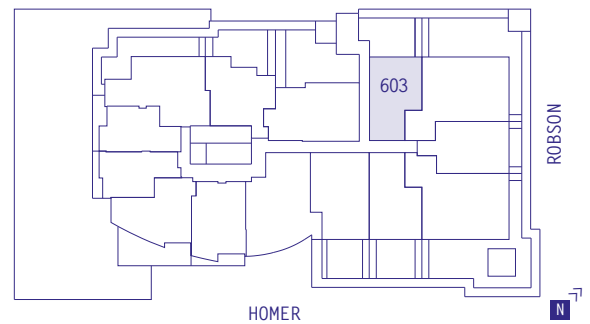
## SUITE 603

1 BEDROOM

Enclosed Area 596 sq ft

Balcony 59 sq ft

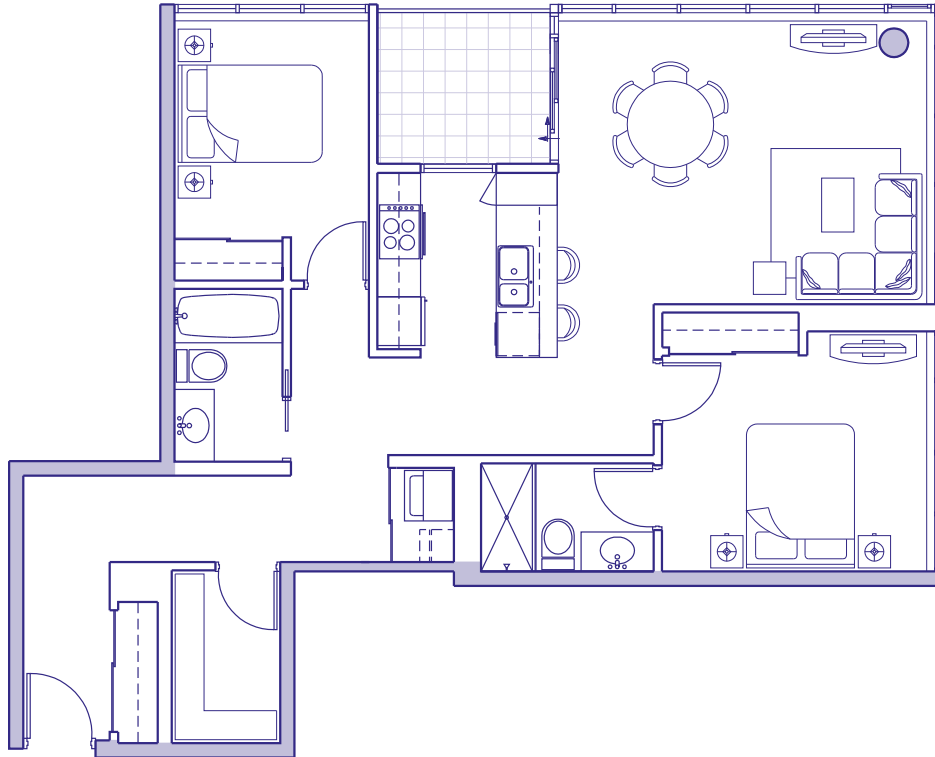
Total Area 655 sq ft



\*Ceiling heights of approximately 8'6" over the majority of the living/dining and bedroom areas.

The Developer reserves the right to make modifications and changes to building design, specifications, features, ceiling heights and floorplans without notification. Room sets are for illustration purposes only. These matters will be governed entirely by the terms of the purchase contract and by the information provided for in the disclosure statement.





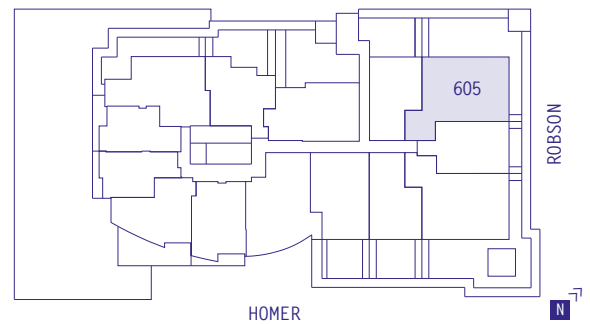
## SUITE 605

2 BEDROOM

Enclosed Area 1020 sq ft

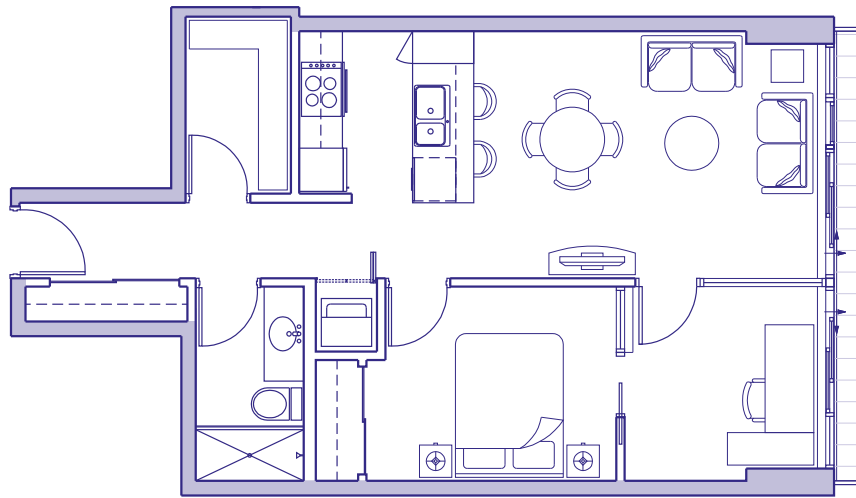
Balcony 60 sq ft

Total Area 1080 sq ft



\*Ceiling heights of approximately 8'6" over the majority of the living/dining and bedroom areas.

The Developer reserves the right to make modifications and changes to building design, specifications, features, ceiling heights and floorplans without notification. Room sets are for illustration purposes only. These matters will be governed entirely by the terms of the purchase contract and by the information provided for in the disclosure statement.



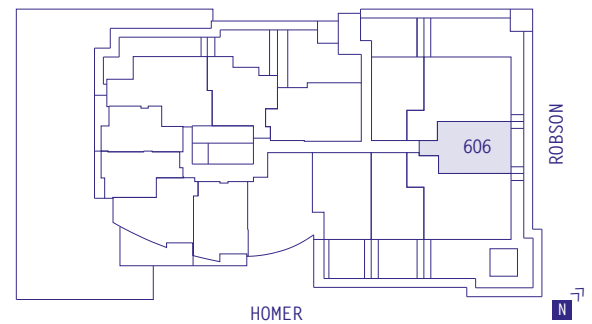
## SUITE 606

1 BEDROOM + DEN

Enclosed Area 696 sq ft

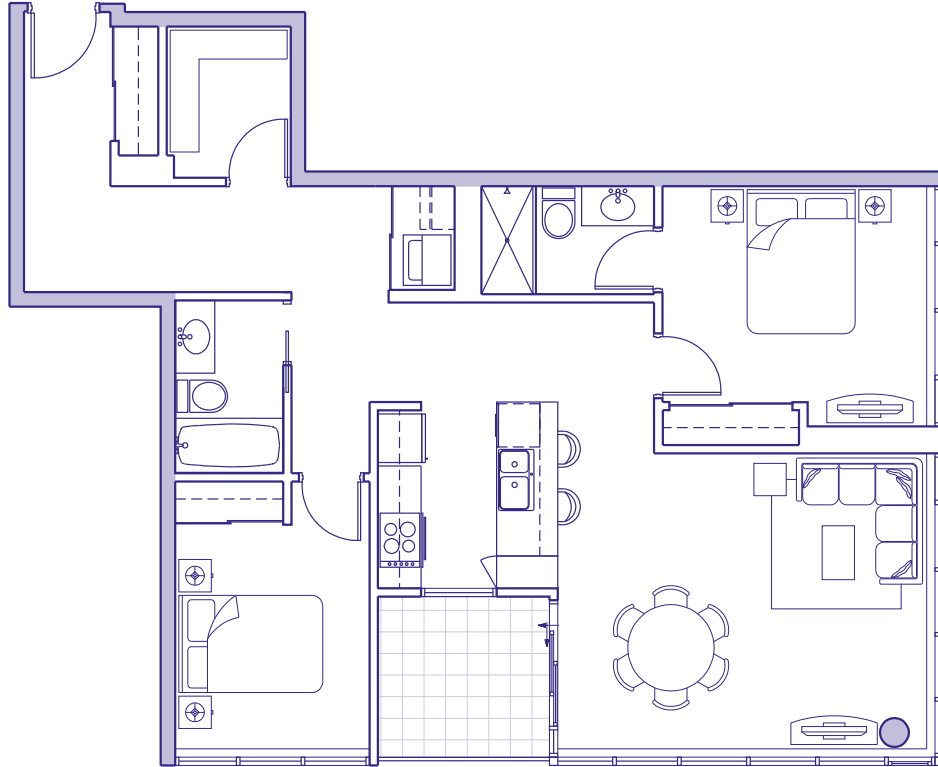
Balcony 36 sq ft

Total Area 732 sq ft



\*Ceiling heights of approximately 8'6" over the majority of the living/dining and bedroom areas.

The Developer reserves the right to make modifications and changes to building design, specifications, features, ceiling heights and floorplans without notification. Room sets are for illustration purposes only. These matters will be governed entirely by the terms of the purchase contract and by the information provided for in the disclosure statement.



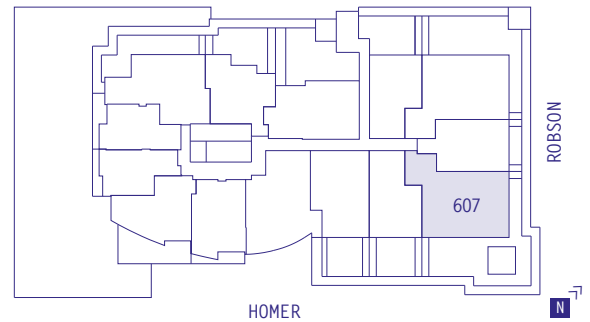
## SUITE 607

2 BEDROOM

Enclosed Area 1045 sq ft

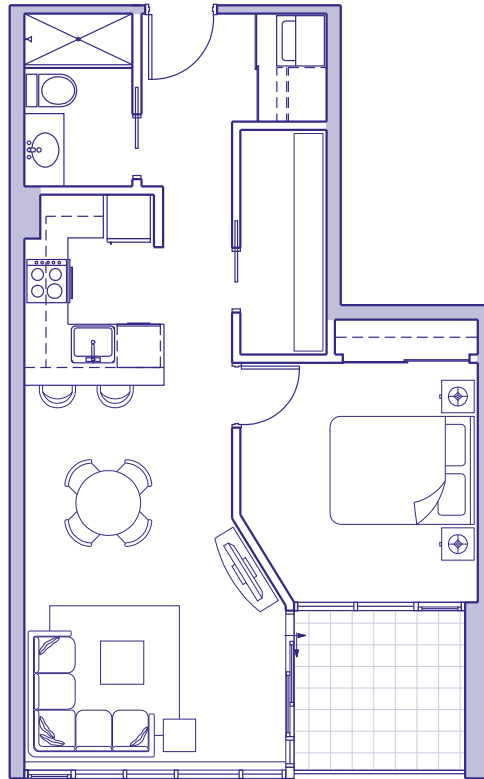
Balcony 62 sq ft

Total Area 1107 sq ft



\*Ceiling heights of approximately 8'6" over the majority of the living/dining and bedroom areas.

The Developer reserves the right to make modifications and changes to building design, specifications, features, ceiling heights and floorplans without notification. Room sets are for illustration purposes only. These matters will be governed entirely by the terms of the purchase contract and by the information provided for in the disclosure statement.



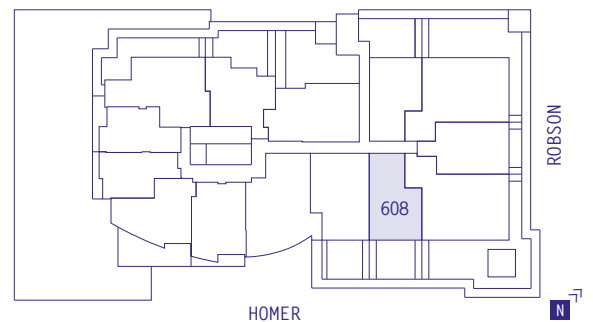
## SUITE 608

1 BEDROOM

Enclosed Area 610 sq ft

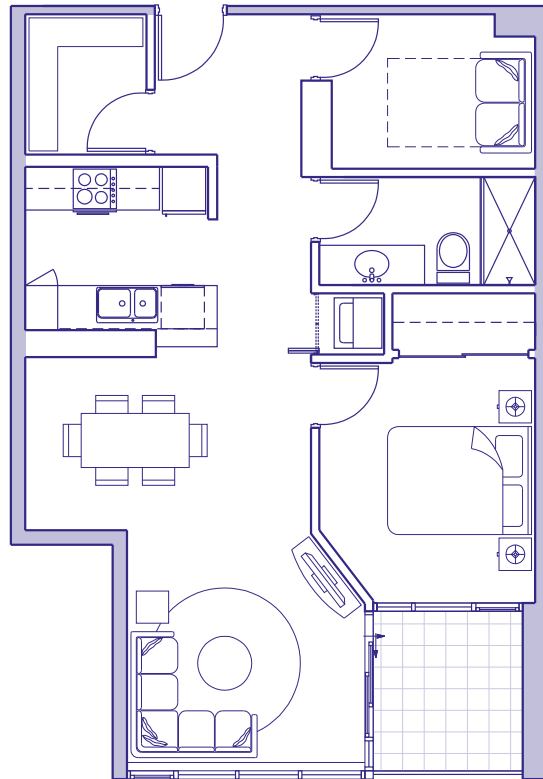
Balcony 65 sq ft

Total Area 675 sq ft



\*Ceiling heights of approximately 8'6" over the majority of the living/dining and bedroom areas.

The Developer reserves the right to make modifications and changes to building design, specifications, features, ceiling heights and floorplans without notification. Room sets are for illustration purposes only. These matters will be governed entirely by the terms of the purchase contract and by the information provided for in the disclosure statement.



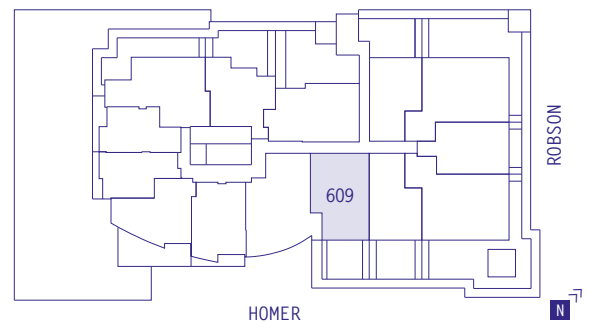
## SUITE 609

1 BEDROOM + DEN

Enclosed Area 750 sq ft

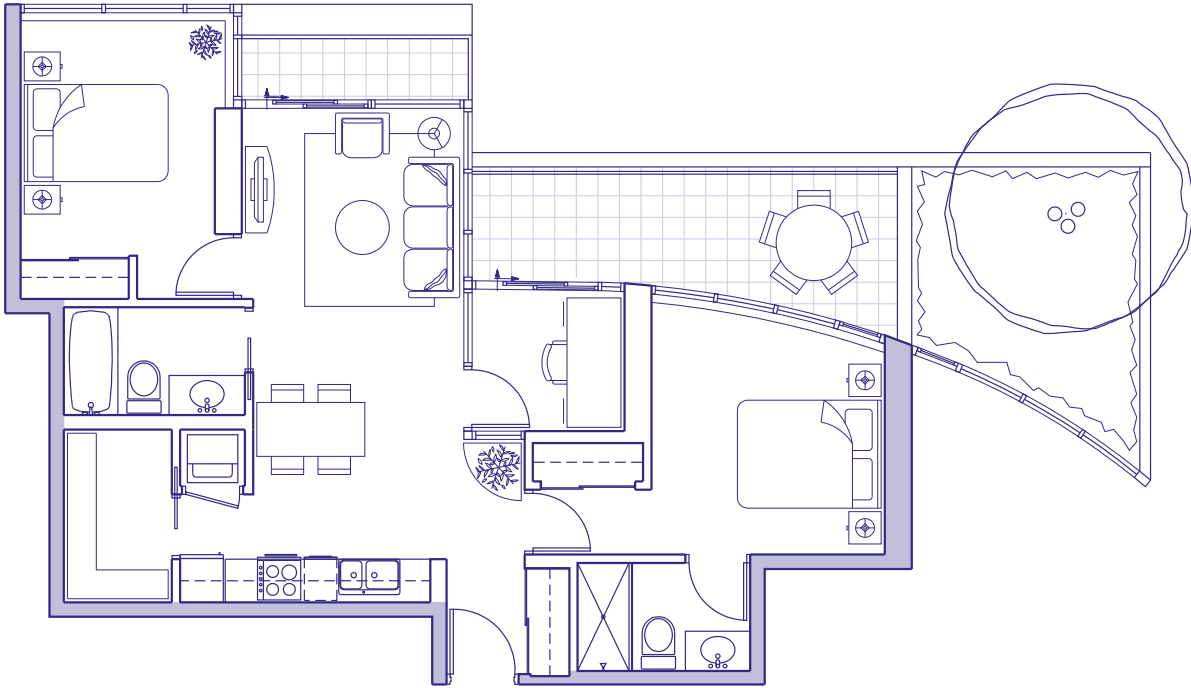
Balcony 57 sq ft

Total Area 807 sq ft



\*Ceiling heights of approximately 8'6" over the majority of the living/dining and bedroom areas.

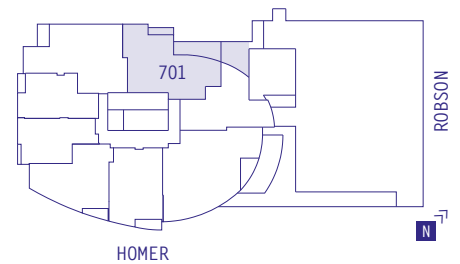
The Developer reserves the right to make modifications and changes to building design, specifications, features, ceiling heights and floorplans without notification. Room sets are for illustration purposes only. These matters will be governed entirely by the terms of the purchase contract and by the information provided for in the disclosure statement.



## SUITE 701

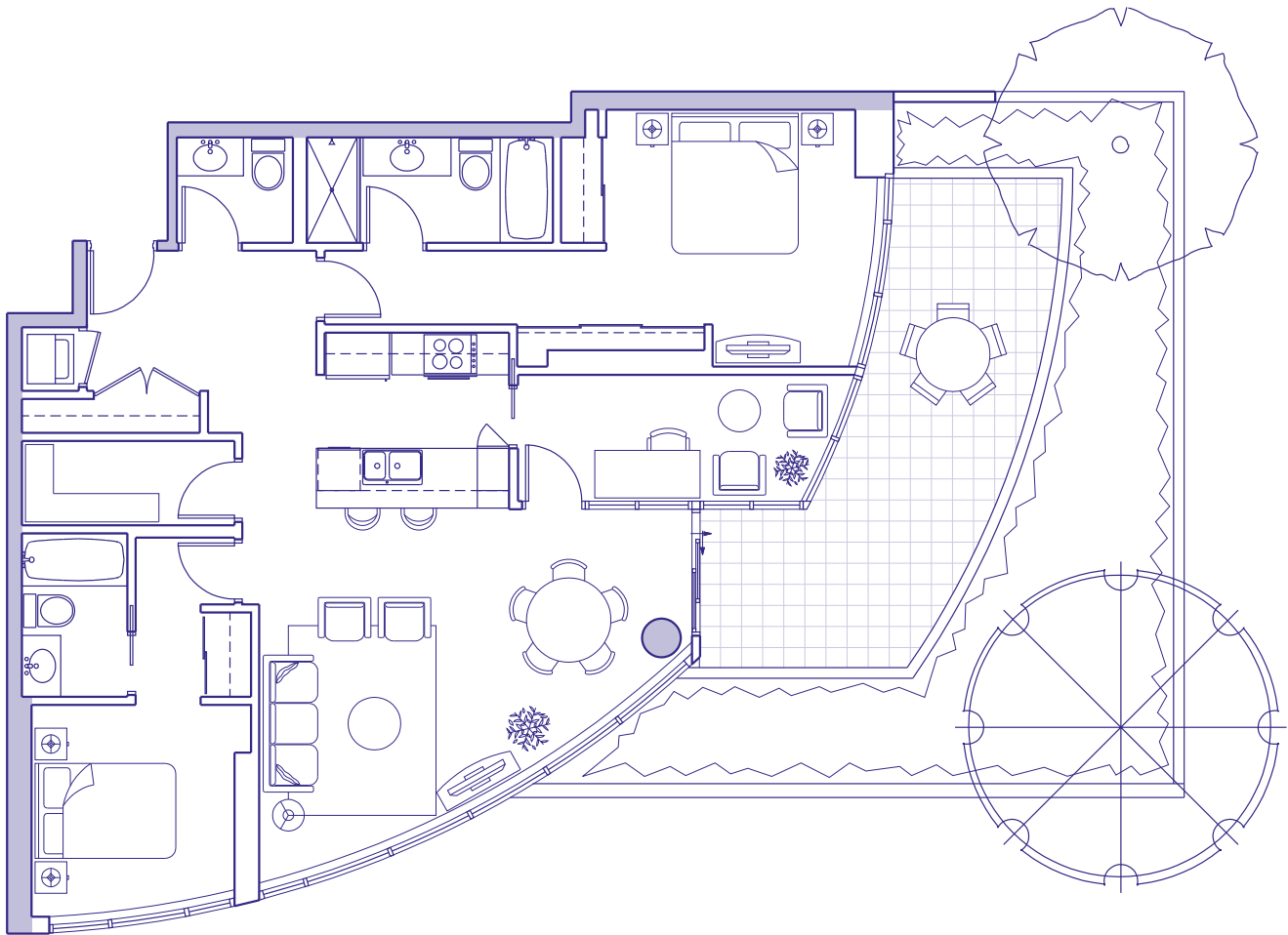
2 BEDROOM + DEN

Enclosed Area	918 sq ft
Balcony	32 sq ft
Terrace/Planter	240 sq ft
<b>Total Area</b>	<b>1190 sq ft</b>



\*Ceiling heights of approximately 8'6" over the majority of the living/dining and bedroom areas.

The Developer reserves the right to make modifications and changes to building design, specifications, features, ceiling heights and floorplans without notification. Room sets are for illustration purposes only. These matters will be governed entirely by the terms of the purchase contract and by the information provided for in the disclosure statement.



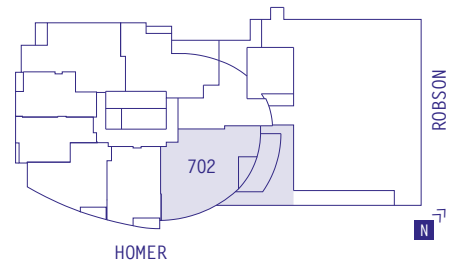
## SUITE 702

2 BEDROOM + DEN

Enclosed Area 1233 sq ft

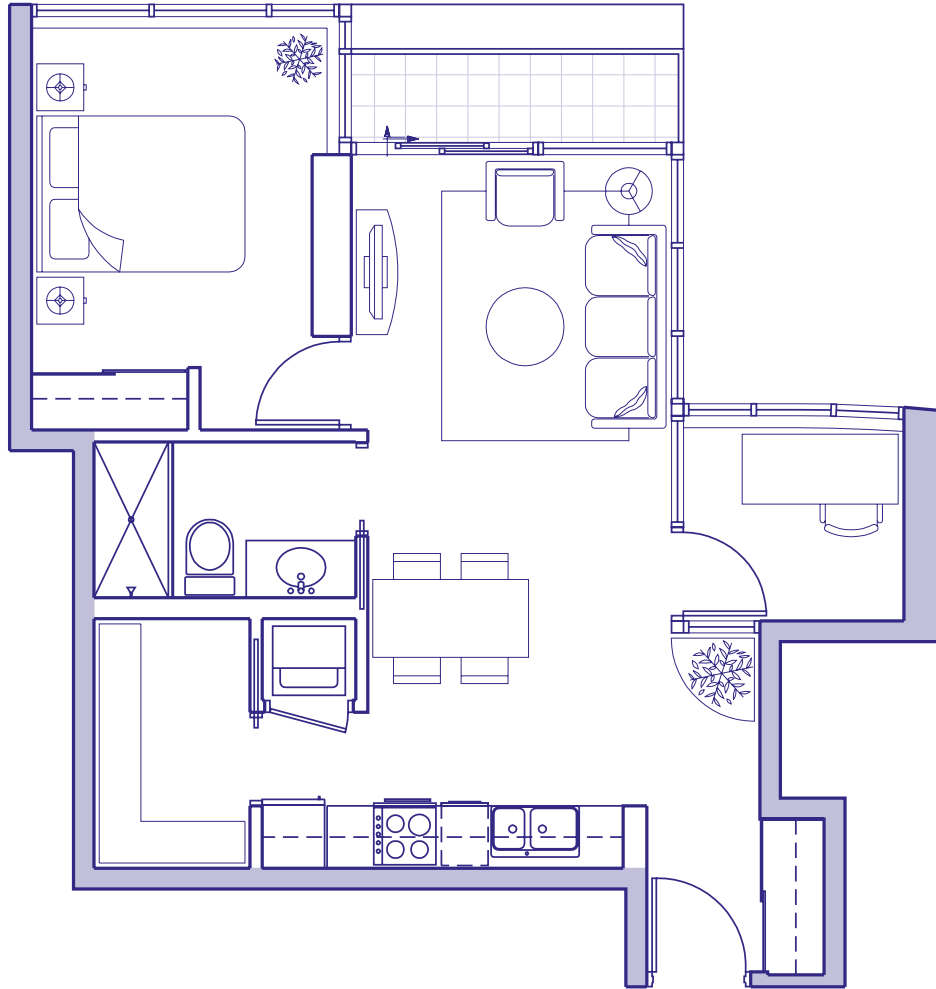
Terrace/Planter 610 sq ft

Total Area 1843 sq ft



\*Ceiling heights of approximately 8'6" over the majority of the living/dining and bedroom areas.

The Developer reserves the right to make modifications and changes to building design, specifications, features, ceiling heights and floorplans without notification. Room sets are for illustration purposes only. These matters will be governed entirely by the terms of the purchase contract and by the information provided for in the disclosure statement.



## SUITE 01

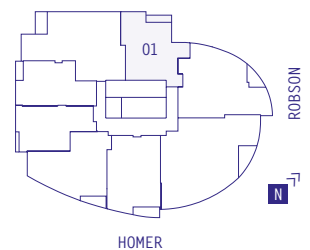
Typical Floors 8-30

1 BEDROOM + DEN

Enclosed Area 639 sq ft

Balcony 32 sq ft

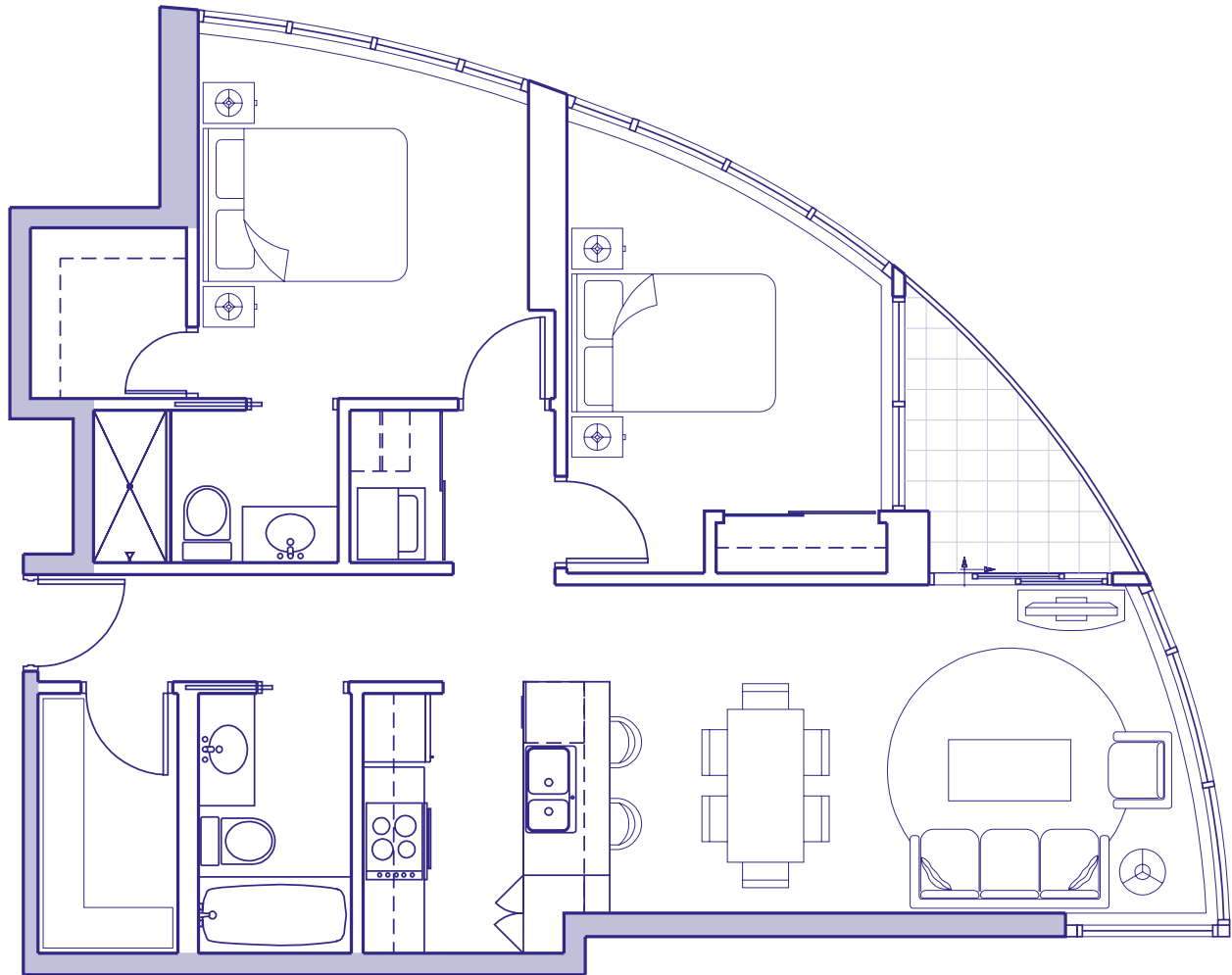
Total Area 671 sq ft



\*Ceiling heights of approximately 8'6" over the majority of the living/dining and bedroom areas.

The Developer reserves the right to make modifications and changes to building design, specifications, features, ceiling heights and floorplans without notification. Room sets are for illustration purposes only. These matters will be governed entirely by the terms of the purchase contract and by the information provided for in the disclosure statement.





## SUITE 02

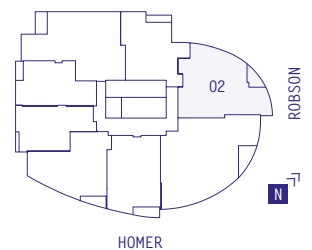
Typical Floors 8-30

2 BEDROOM

Enclosed Area 873 sq ft

Balcony 45 sq ft

Total Area 918 sq ft



\*Ceiling heights of approximately 8'6" over the majority of the living/dining and bedroom areas.

The Developer reserves the right to make modifications and changes to building design, specifications, features, ceiling heights and floorplans without notification. Room sets are for illustration purposes only. These matters will be governed entirely by the terms of the purchase contract and by the information provided for in the disclosure statement.



## SUITE 03

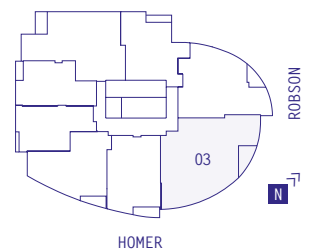
Typical Floors 8-30

2 BEDROOM + DEN

Enclosed Area 1180 sq ft

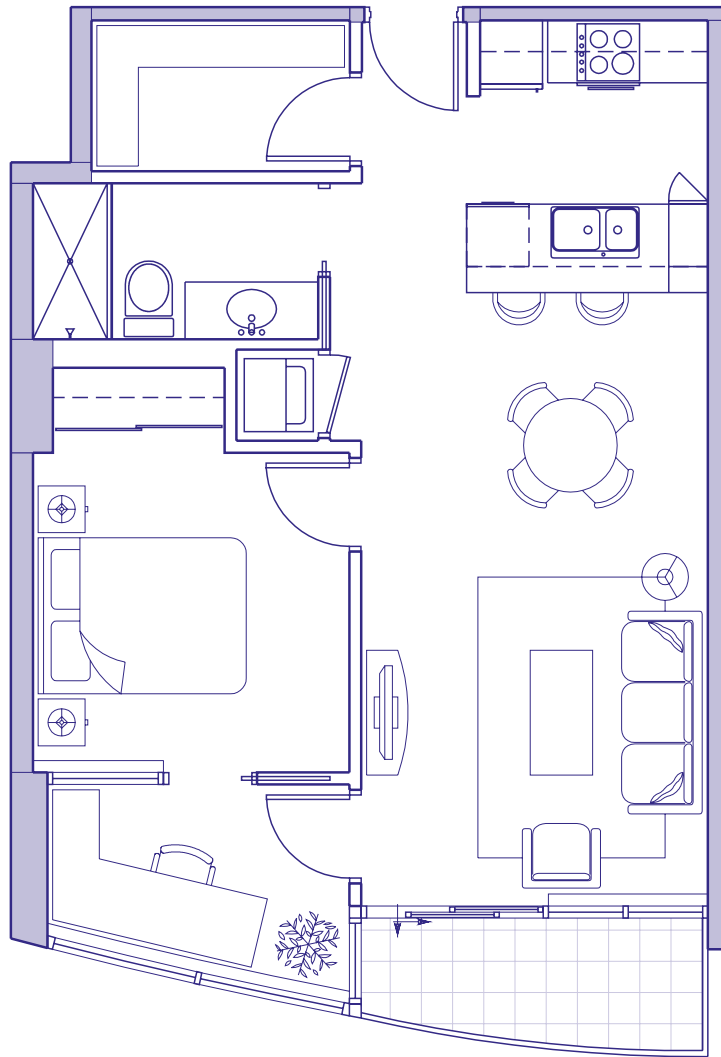
Balcony 62 sq ft

Total Area 1242 sq ft



\*Ceiling heights of approximately 8'6" over the majority of the living/dining and bedroom areas.

The Developer reserves the right to make modifications and changes to building design, specifications, features, ceiling heights and floorplans without notification. Room sets are for illustration purposes only. These matters will be governed entirely by the terms of the purchase contract and by the information provided for in the disclosure statement.



## SUITE 05

Typical Floors 7-30

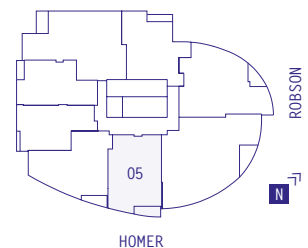
Also includes  
Suites 511 & 611

1 BEDROOM + DEN

Enclosed Area 690 sq ft

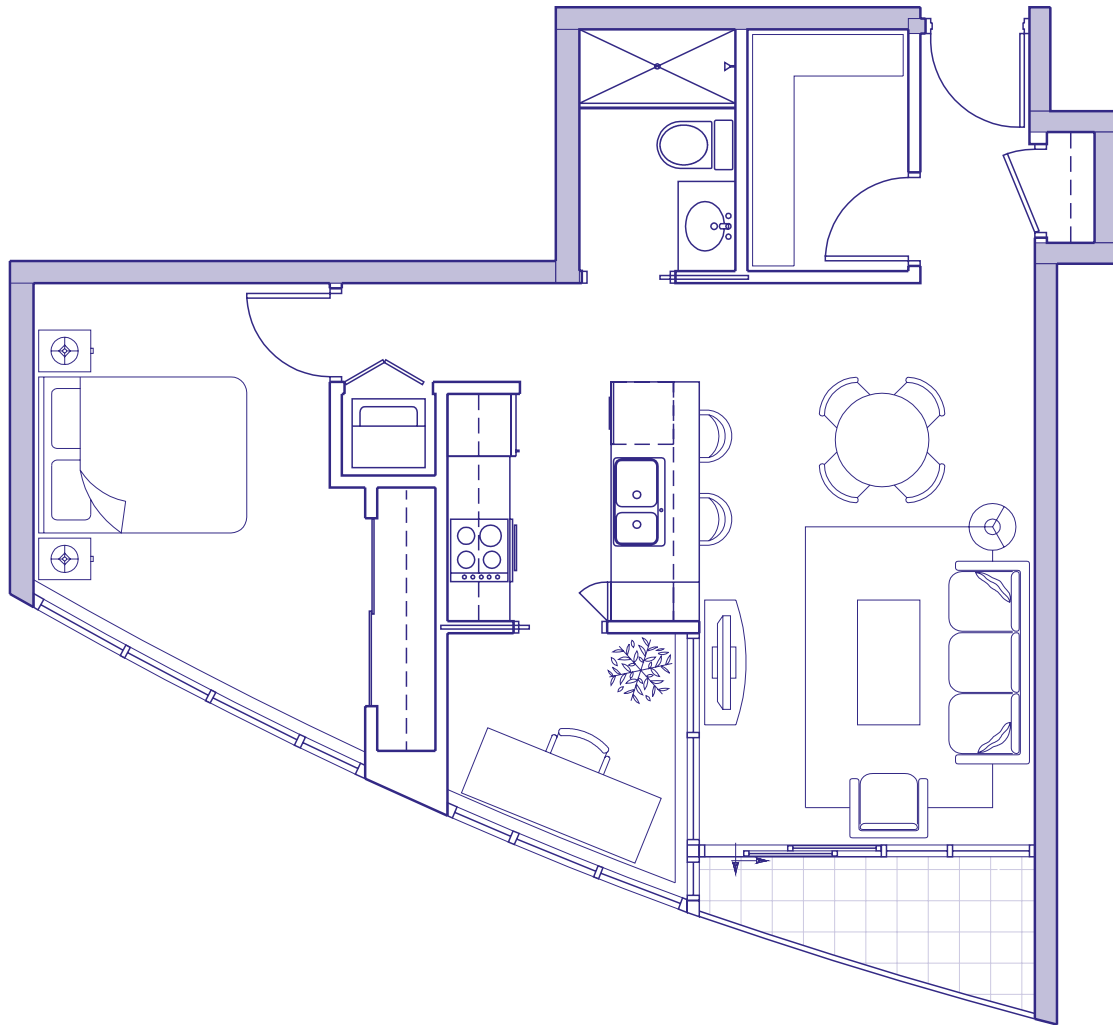
Balcony 45 sq ft

Total Area 735 sq ft



\*Ceiling heights of approximately 8'6" over the majority of the living/dining and bedroom areas.

The Developer reserves the right to make modifications and changes to building design, specifications, features, ceiling heights and floorplans without notification. Room sets are for illustration purposes only. These matters will be governed entirely by the terms of the purchase contract and by the information provided for in the disclosure statement.



## SUITE 06

Typical Floors 7-30

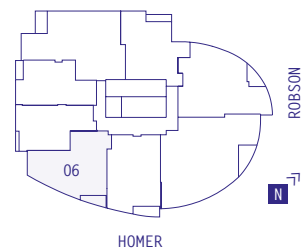
Also includes  
Suite 612

1 BEDROOM + DEN

Enclosed Area 690 sq ft

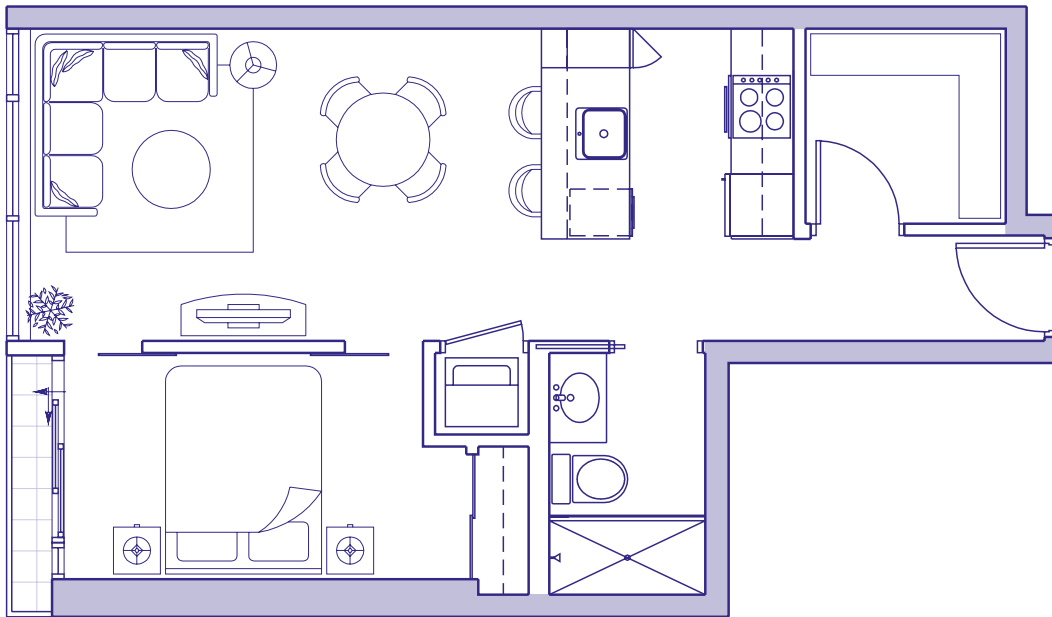
Balcony 45 sq ft

Total Area 735 sq ft



\*Ceiling heights of approximately 8'6" over the majority of the living/dining and bedroom areas.

The Developer reserves the right to make modifications and changes to building design, specifications, features, ceiling heights and floorplans without notification. Room sets are for illustration purposes only. These matters will be governed entirely by the terms of the purchase contract and by the information provided for in the disclosure statement.



## SUITE 07

Typical Floors 7-30

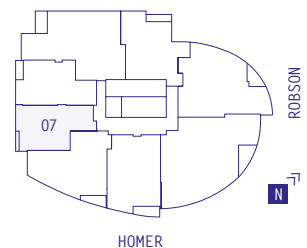
Also includes  
Suite 613

1 BEDROOM

Enclosed Area 524 sq ft

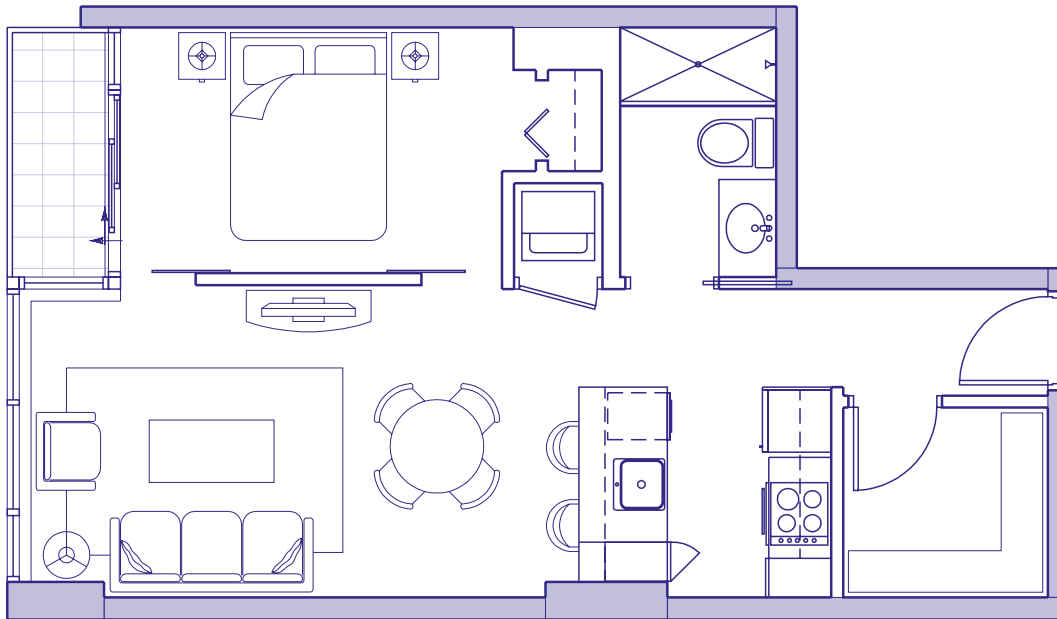
Balcony 12 sq ft

Total Area 536 sq ft



\*Ceiling heights of approximately 8'6" over the majority of the living/dining and bedroom areas.

The Developer reserves the right to make modifications and changes to building design, specifications, features, ceiling heights and floorplans without notification. Room sets are for illustration purposes only. These matters will be governed entirely by the terms of the purchase contract and by the information provided for in the disclosure statement.



## SUITE 08

Typical Floors 7-30

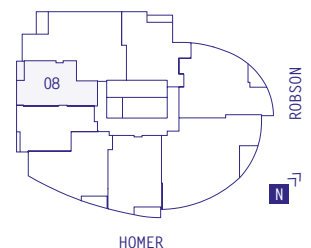
Also includes  
Suite 615

1 BEDROOM

Enclosed Area 533 sq ft

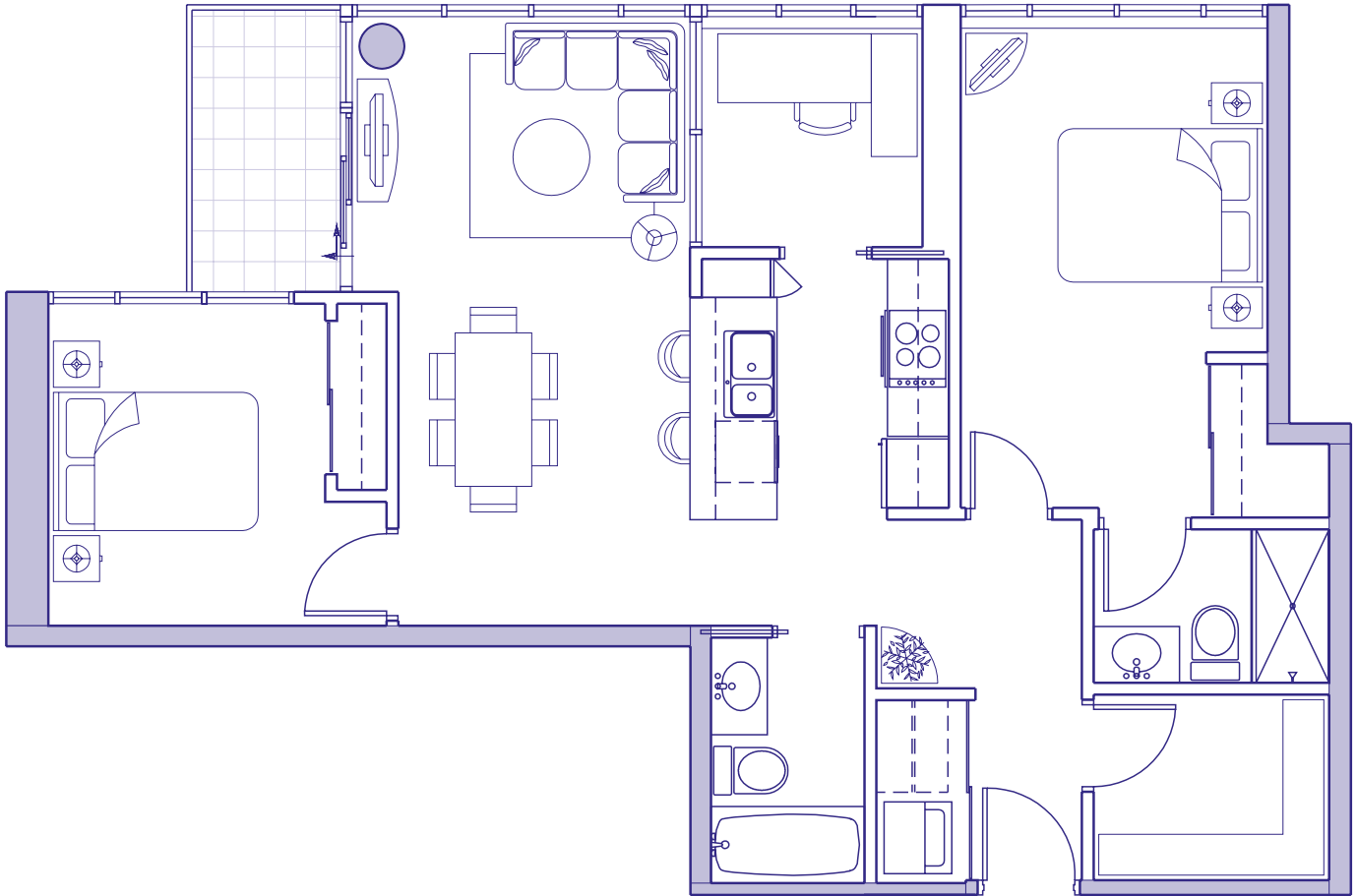
Balcony 27 sq ft

Total Area 560 sq ft



\*Ceiling heights of approximately 8'6" over the majority of the living/dining and bedroom areas.

The Developer reserves the right to make modifications and changes to building design, specifications, features, ceiling heights and floorplans without notification. Room sets are for illustration purposes only. These matters will be governed entirely by the terms of the purchase contract and by the information provided for in the disclosure statement.



## SUITE 09

Typical Floors 7-30

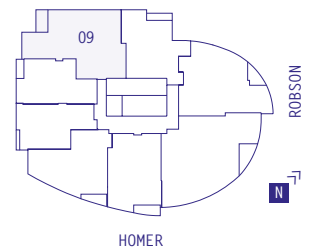
Also includes  
Suite 616

2 BEDROOM + DEN

Enclosed Area 939 sq ft

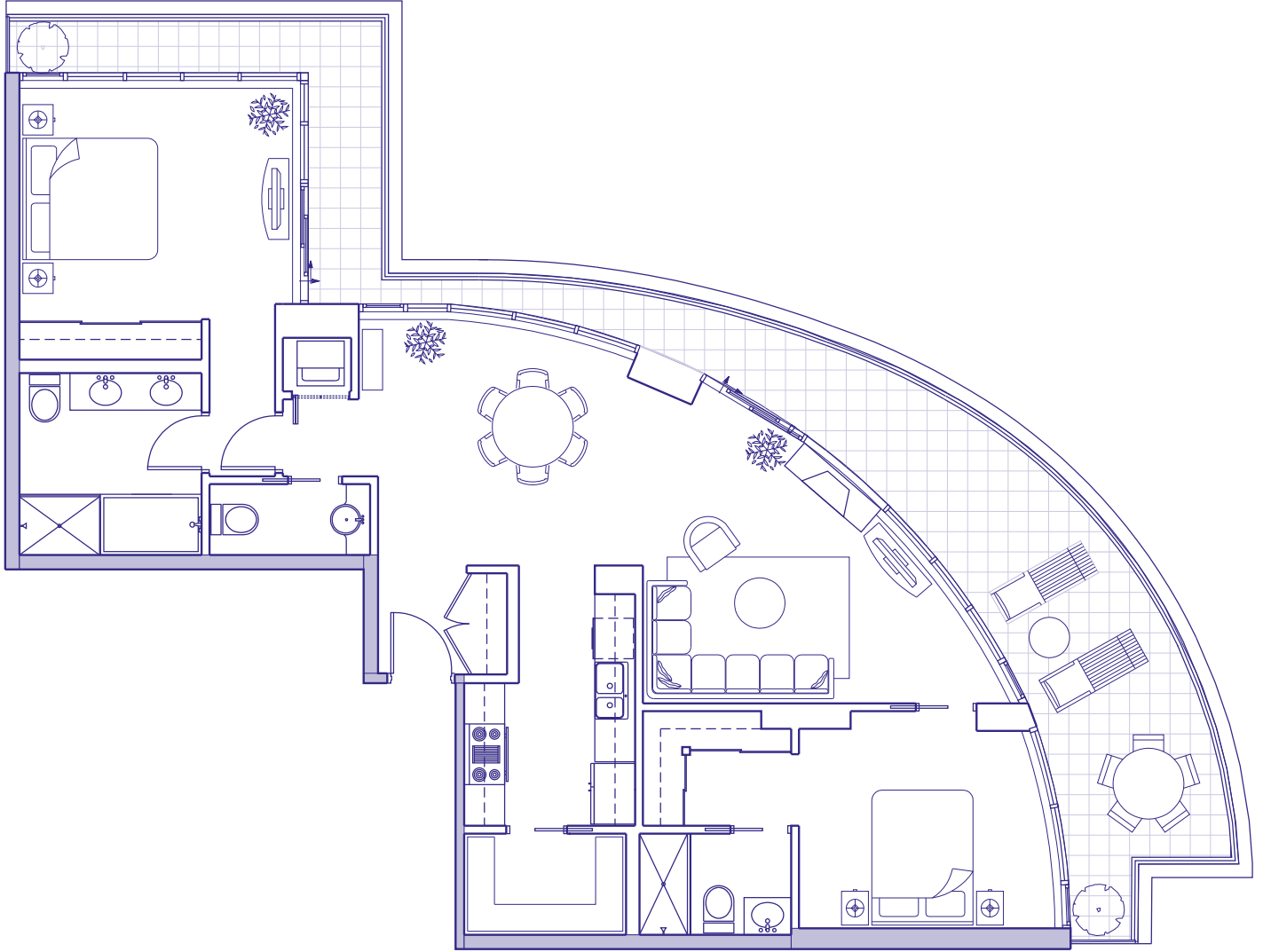
Balcony 50 sq ft

Total Area 989 sq ft



\*Ceiling heights of approximately 8'6" over the majority of the living/dining and bedroom areas.

The Developer reserves the right to make modifications and changes to building design, specifications, features, ceiling heights and floorplans without notification. Room sets are for illustration purposes only. These matters will be governed entirely by the terms of the purchase contract and by the information provided for in the disclosure statement.



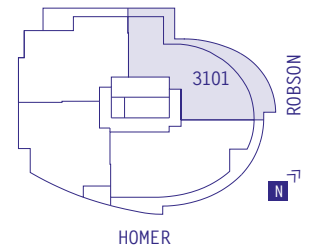
## SUB - PENTHOUSE 3101

2 BEDROOM

Enclosed Area 1233 sq ft

Terrace 395 sq ft

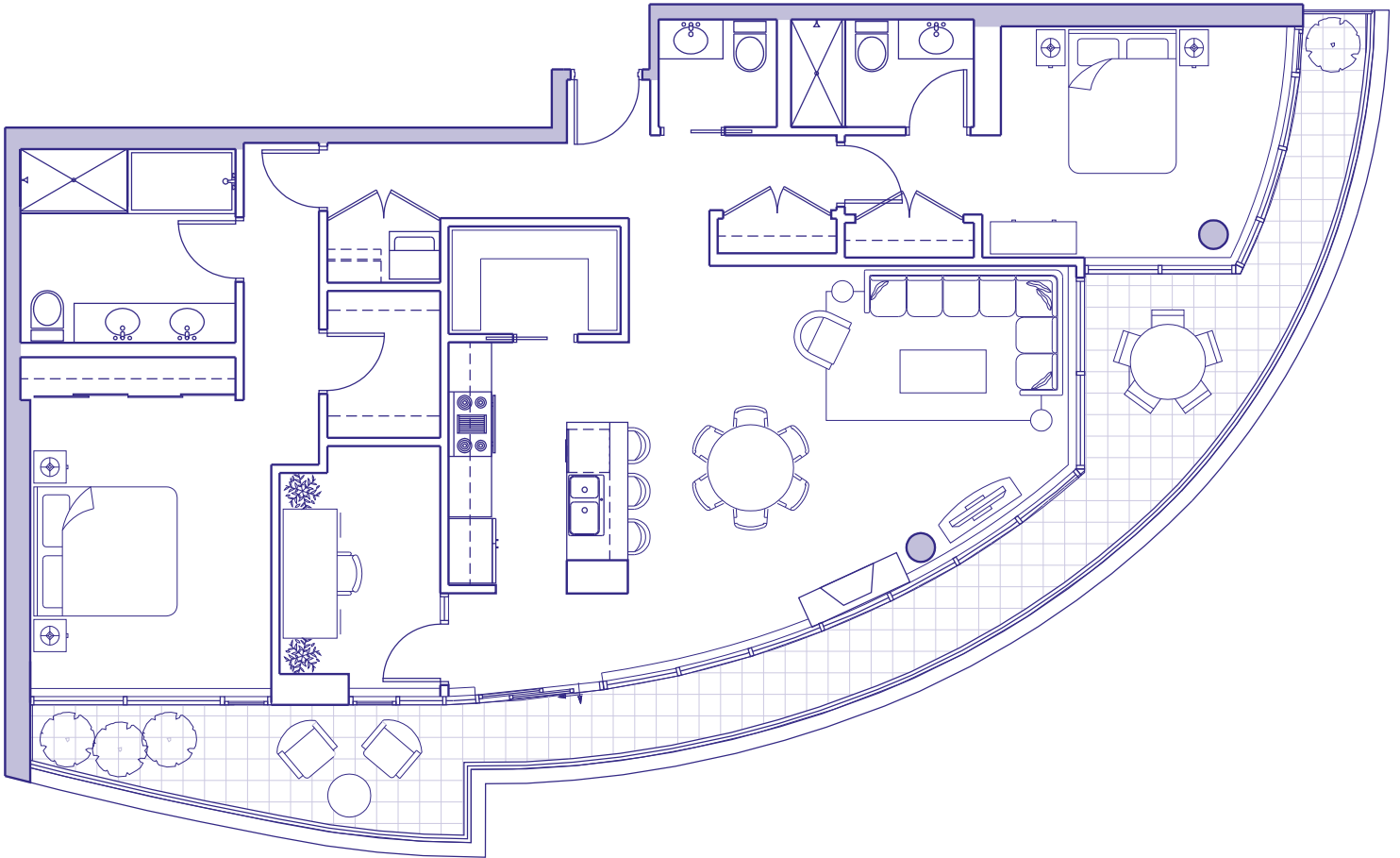
Total Area 1628 sq ft



\*Ceiling heights of approximately 9' over the majority of the living/dining and bedroom areas.

The Developer reserves the right to make modifications and changes to building design, specifications, features, ceiling heights and floorplans without notification. Room sets are for illustration purposes only. These matters will be governed entirely by the terms of the purchase contract and by the information provided for in the disclosure statement.





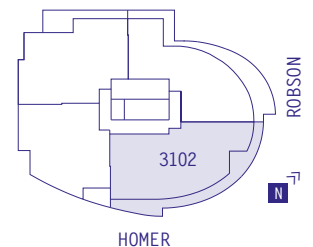
## SUB - PENTHOUSE 3102

2 BEDROOM + DEN

Enclosed Area 1482 sq ft

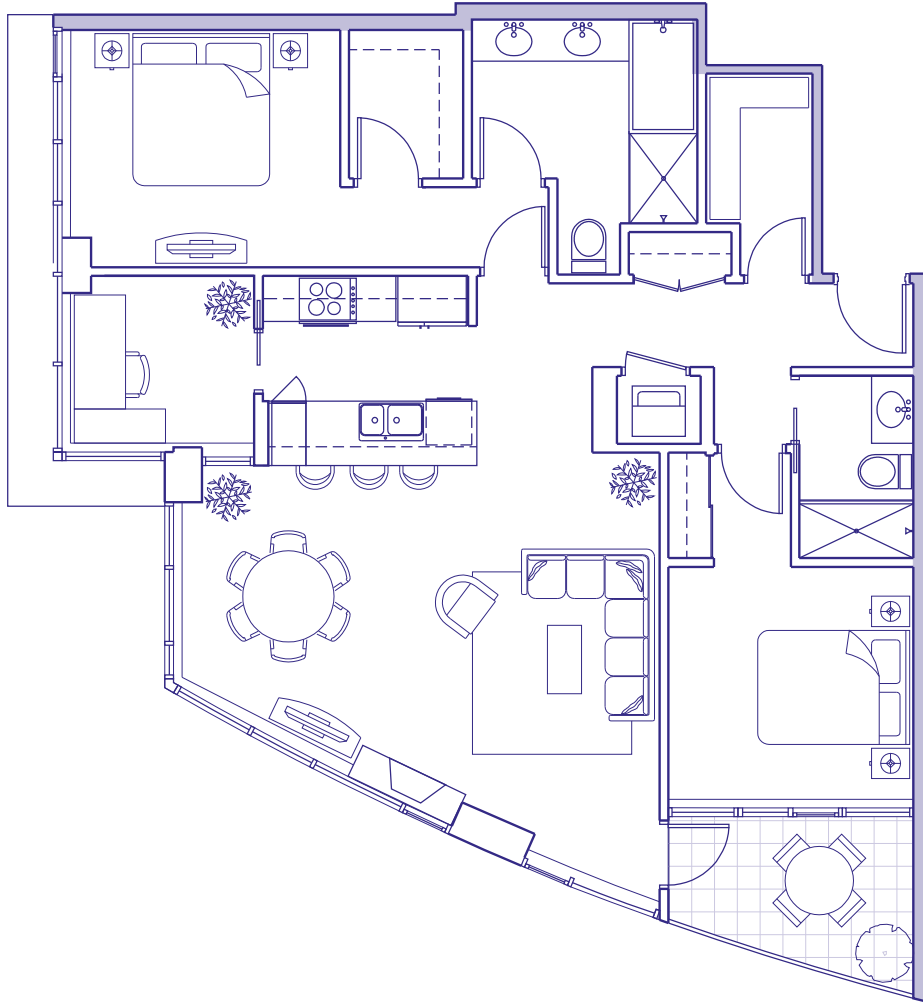
Terrace 350 sq ft

Total Area 1832 sq ft



\*Ceiling heights of approximately 9' over the majority of the living/dining and bedroom areas.

The Developer reserves the right to make modifications and changes to building design, specifications, features, ceiling heights and floorplans without notification. Room sets are for illustration purposes only. These matters will be governed entirely by the terms of the purchase contract and by the information provided for in the disclosure statement.



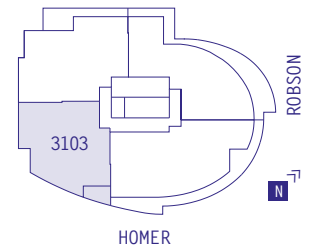
## SUB - PENTHOUSE 3103

2 BEDROOM + DEN

Enclosed Area 1210 sq ft

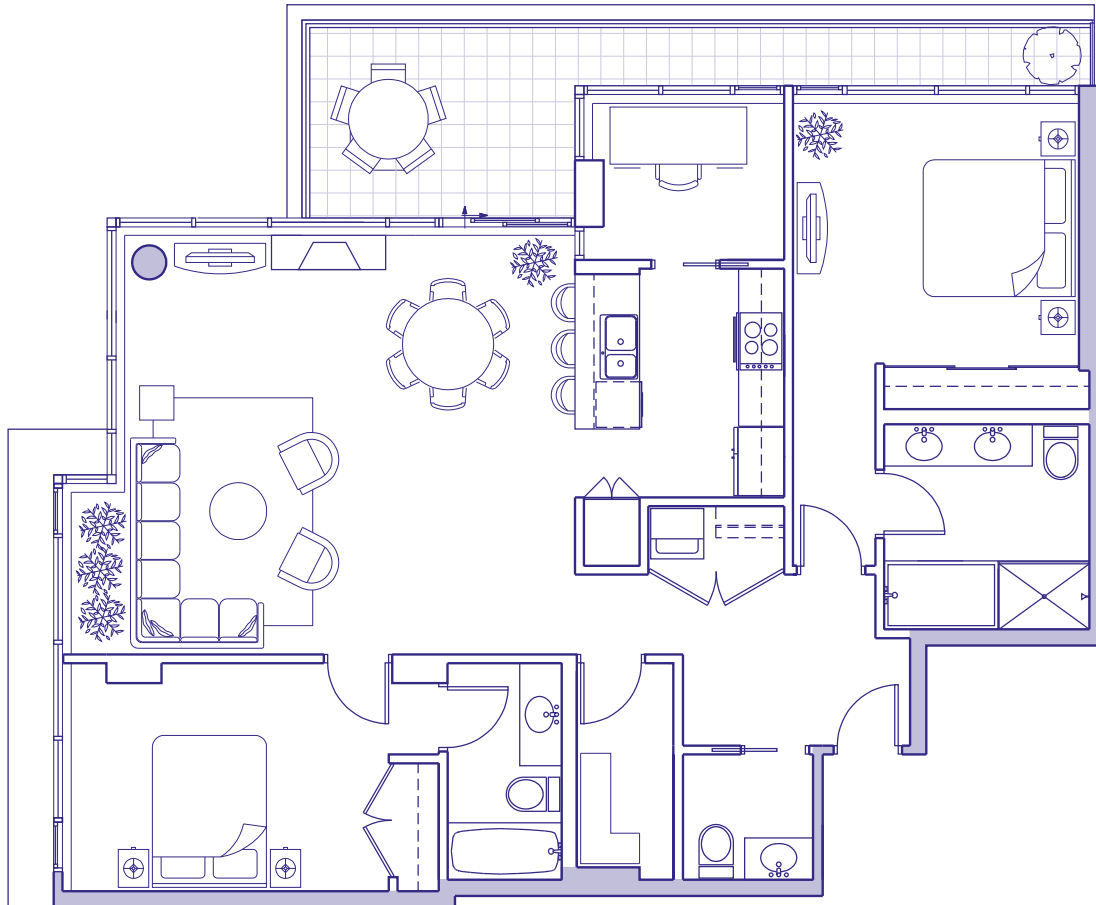
Balcony 72 sq ft

Total Area 1282 sq ft



\*Ceiling heights of approximately 9' over the majority of the living/dining and bedroom areas.

The Developer reserves the right to make modifications and changes to building design, specifications, features, ceiling heights and floorplans without notification. Room sets are for illustration purposes only. These matters will be governed entirely by the terms of the purchase contract and by the information provided for in the disclosure statement.



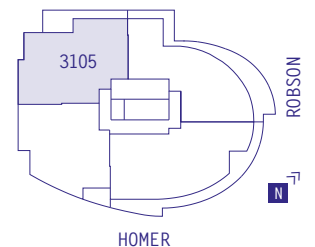
## SUB - PENTHOUSE 3105

2 BEDROOM + DEN

Enclosed Area 1350 sq ft

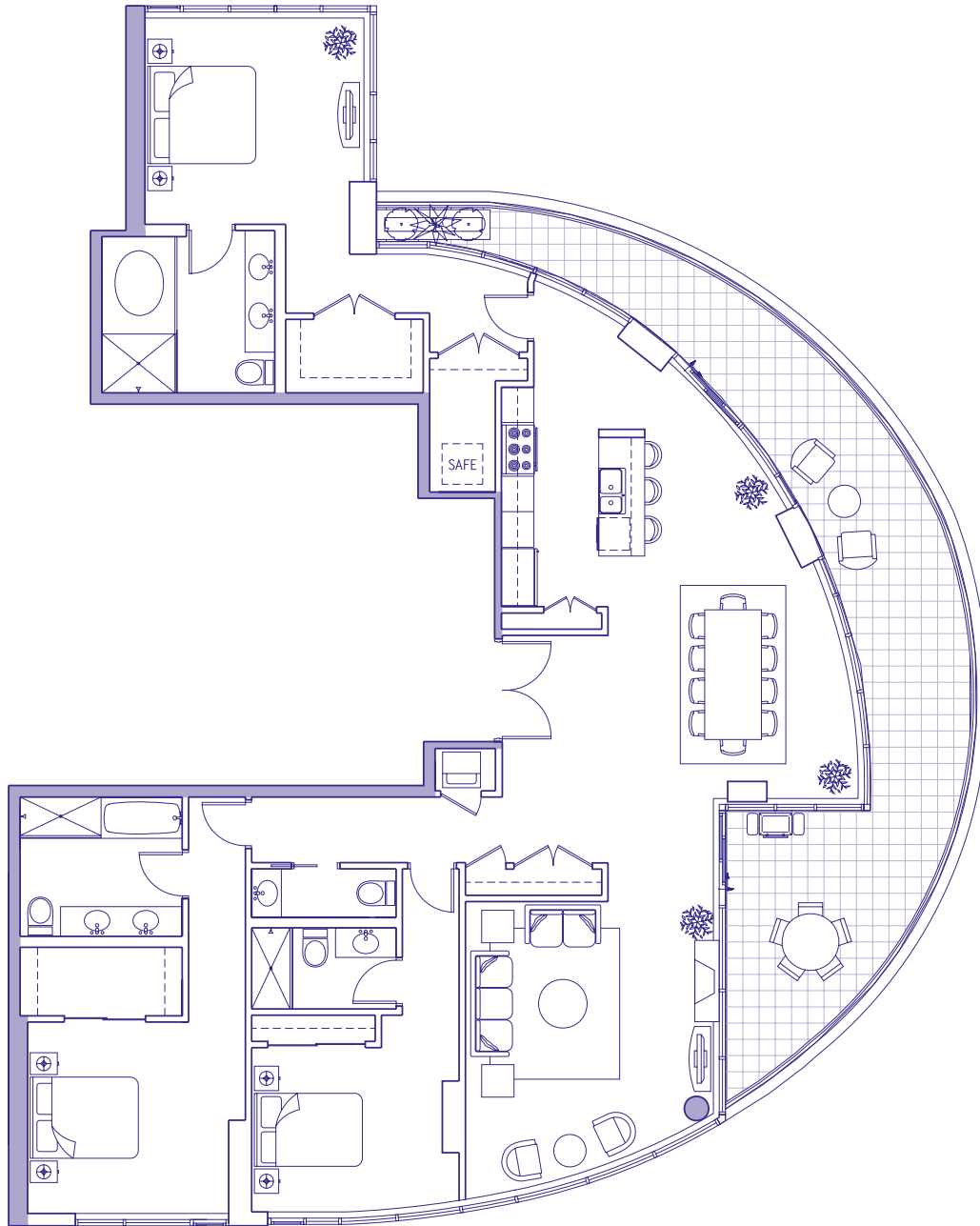
Terrace 170 sq ft

Total Area 1520 sq ft



\*Ceiling heights of approximately 9' over the majority of the living/dining and bedroom areas.

The Developer reserves the right to make modifications and changes to building design, specifications, features, ceiling heights and floorplans without notification. Room sets are for illustration purposes only. These matters will be governed entirely by the terms of the purchase contract and by the information provided for in the disclosure statement.



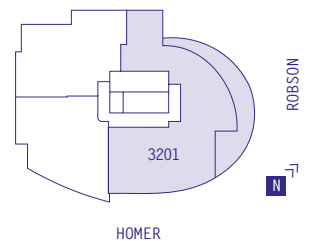
## PENTHOUSE 3201

3 BEDROOM

Enclosed Area 2235 sq ft

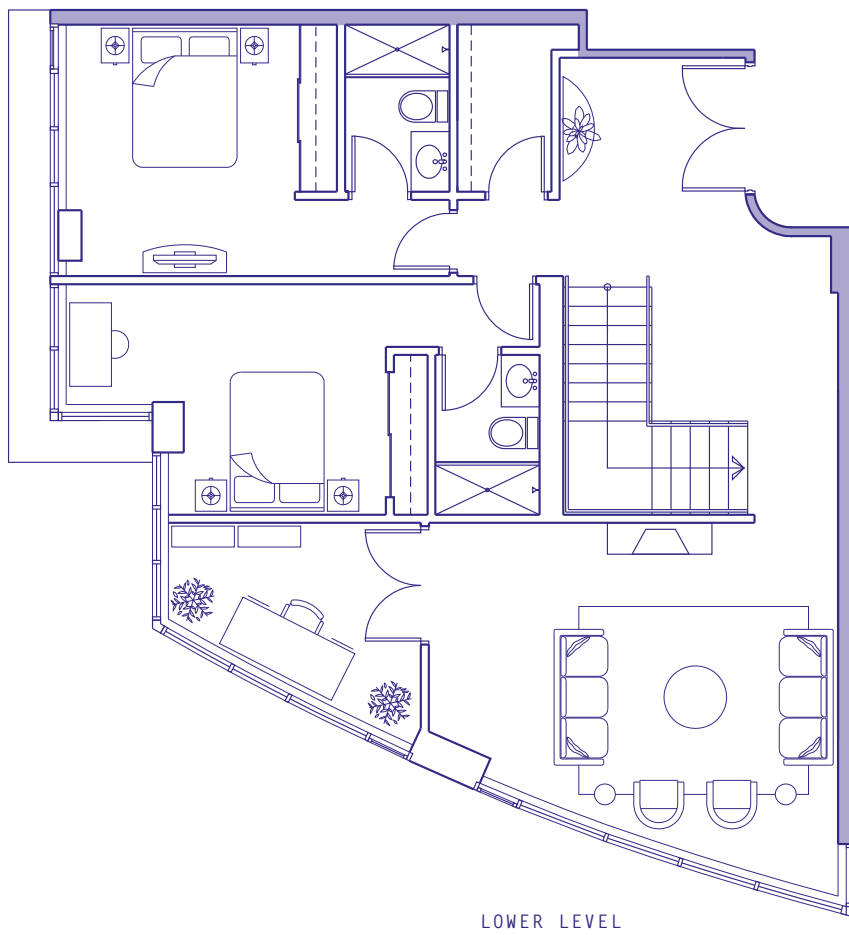
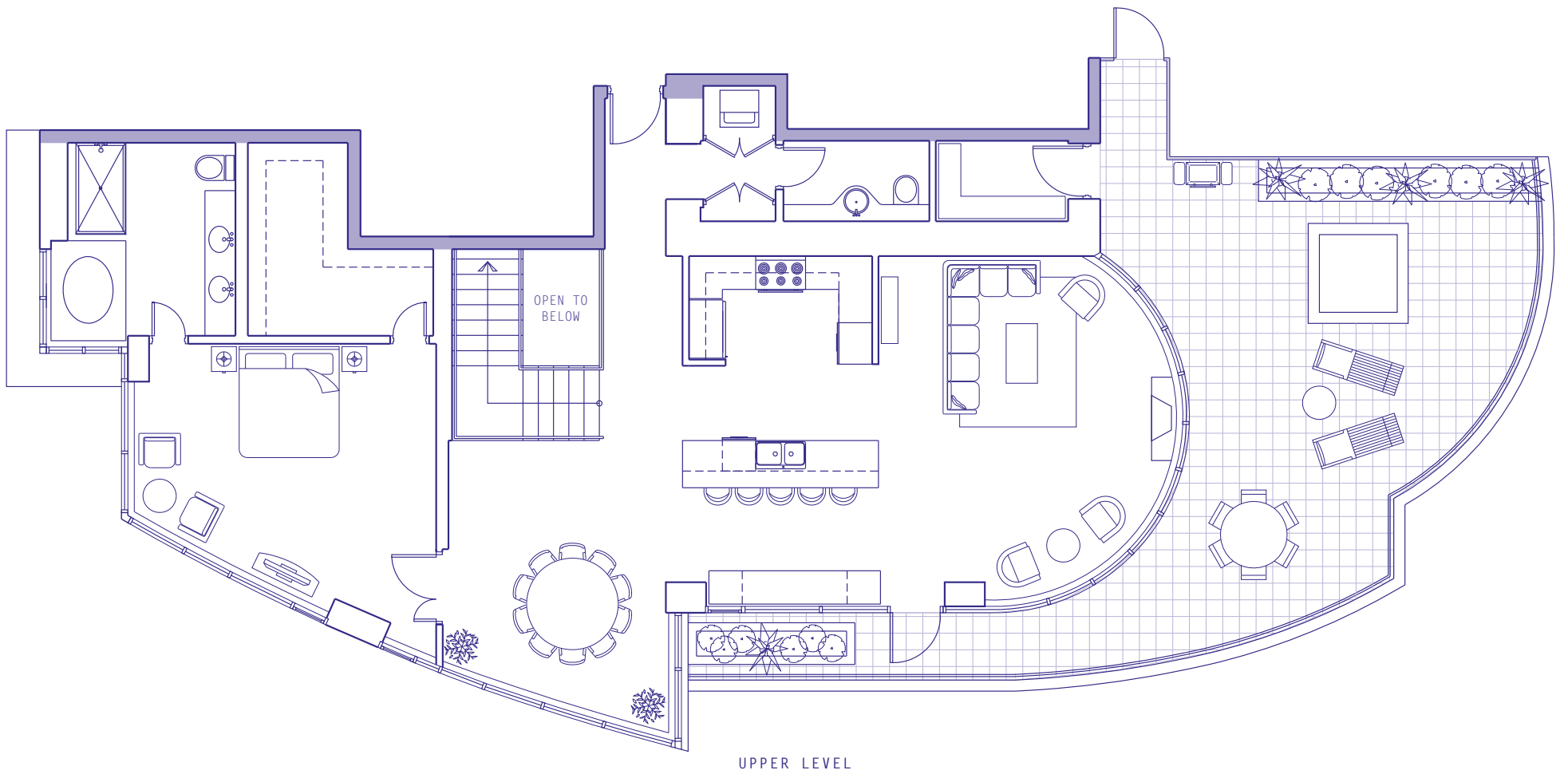
Terrace 500 sq ft

Total Area 2735 sq ft



\*Ceiling heights of approximately 9'6" over the majority of the living/dining and bedroom areas.

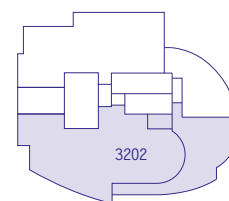
The Developer reserves the right to make modifications and changes to building design, specifications, features, ceiling heights and floorplans without notification. Room sets are for illustration purposes only. These matters will be governed entirely by the terms of the purchase contract and by the information provided for in the disclosure statement.



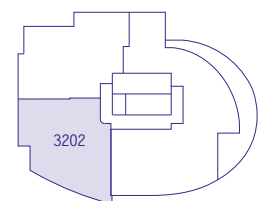
## PENTHOUSE 3202

3 BEDROOM + DEN	
Enclosed Area	3005 sq ft
Terrace	700 sq ft
Total Area	3705 sq ft

Upper Level



Lower Level

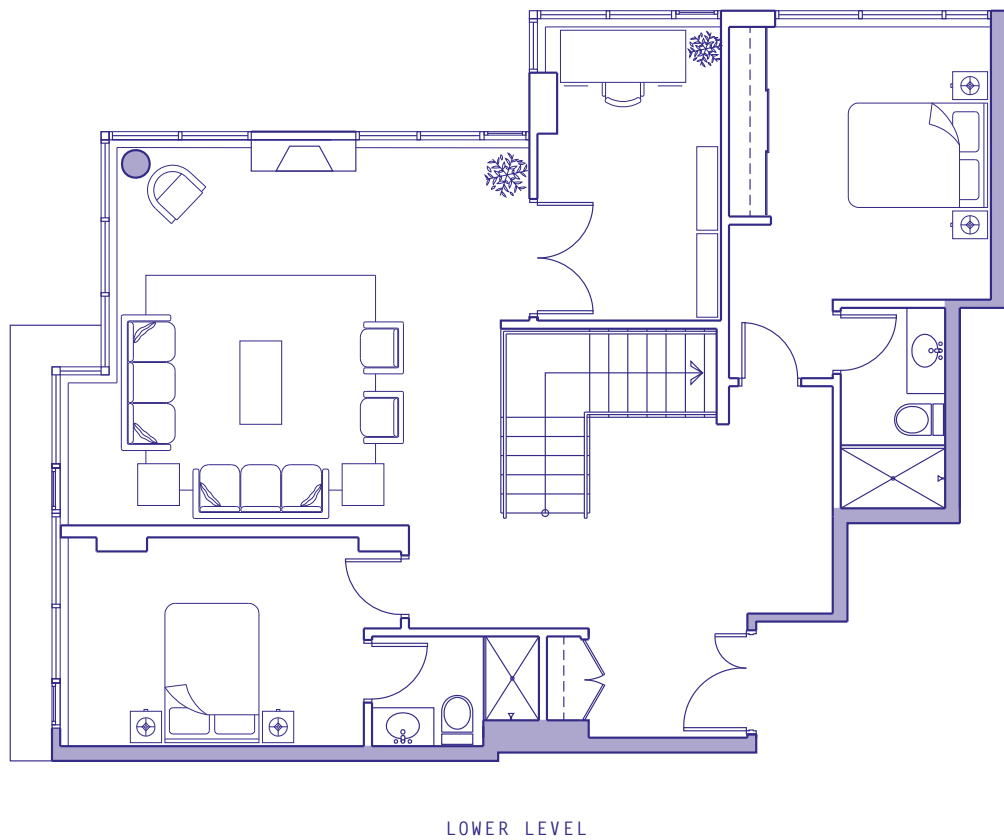
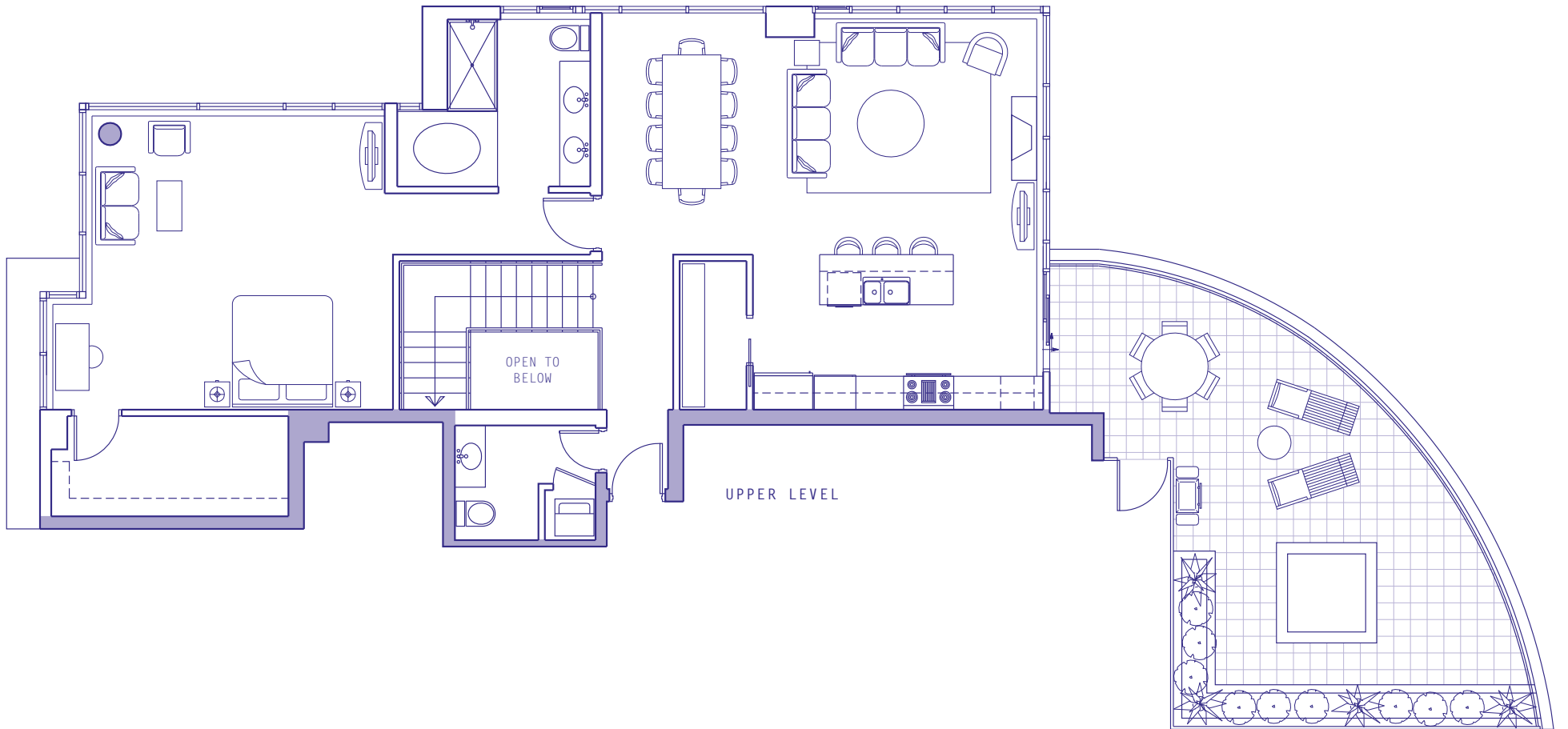


ROBSON  
N

HOMER

\*Ceiling heights of approximately 9'6" on lower level and approximately 9' on upper level over the majority of the living/dining and bedroom areas.

The Developer reserves the right to make modifications and changes to building design, specifications, features, ceiling heights and floorplans without notification.  
Room sets are for illustration purposes only. These matters will be governed entirely by the terms of the purchase contract and by the information provided for in the disclosure statement.



PENTHOUSE 3203

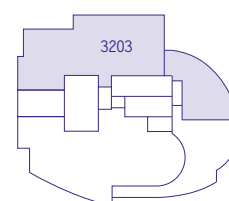
3 BEDROOM + DEN

Enclosed Area 2815 sq ft

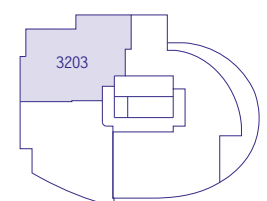
Terrace 500 sq ft

Total Area 3315 sq ft

Upper Level



Lower Level



ROBSON  
N

HOMER

\*Ceiling heights of approximately 9'6" on lower level and approximately 9' on upper level over the majority of the living/dining and bedroom areas.

The Developer reserves the right to make modifications and changes to building design, specifications, features, ceiling heights and floorplans without notification.  
Room sets are for illustration purposes only. These matters will be governed entirely by the terms of the purchase contract and by the information provided for in the disclosure statement.