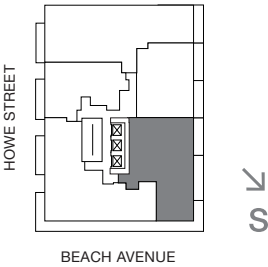
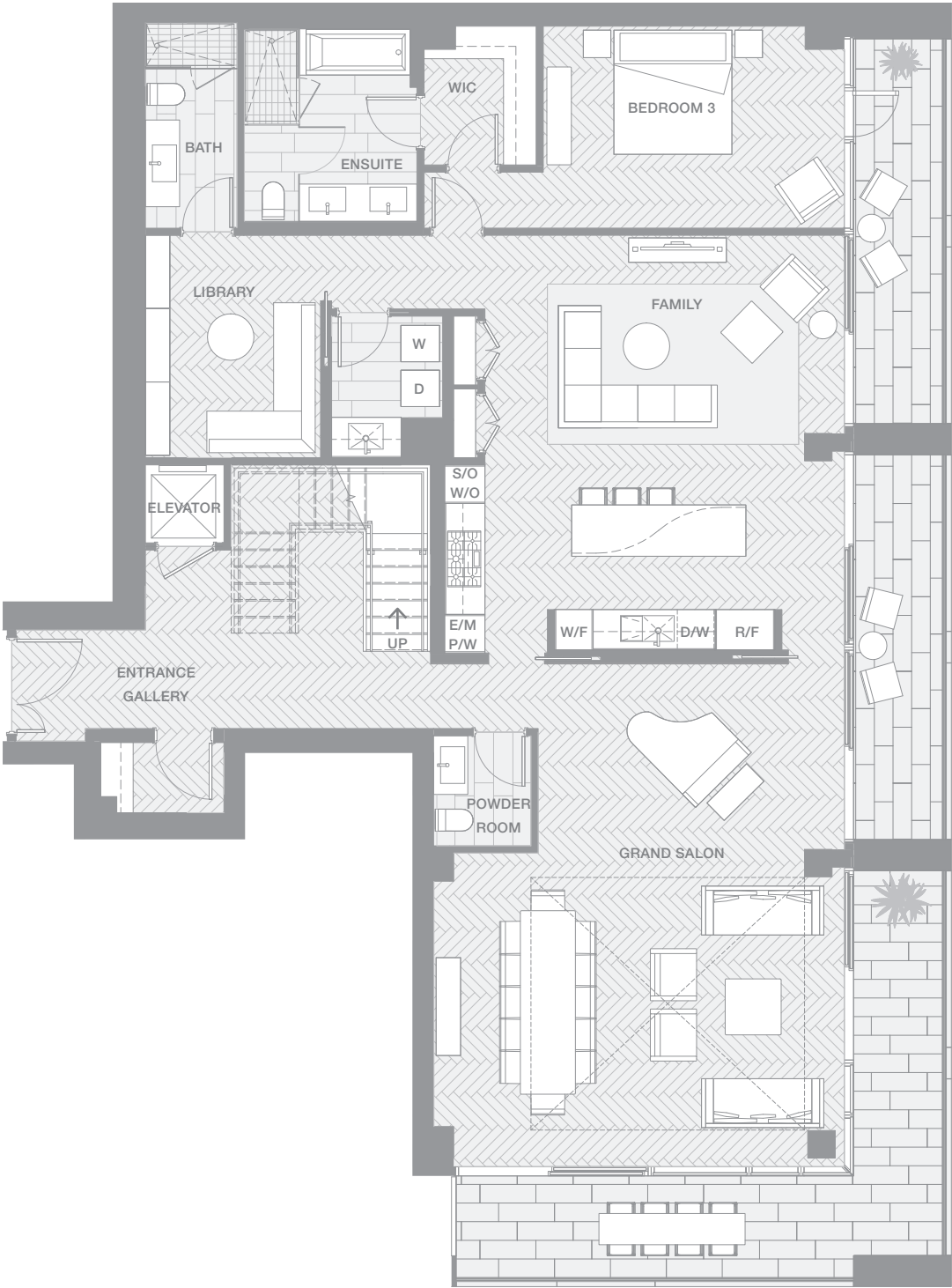


VANCOUVER HOUSE



LOWER LEVEL

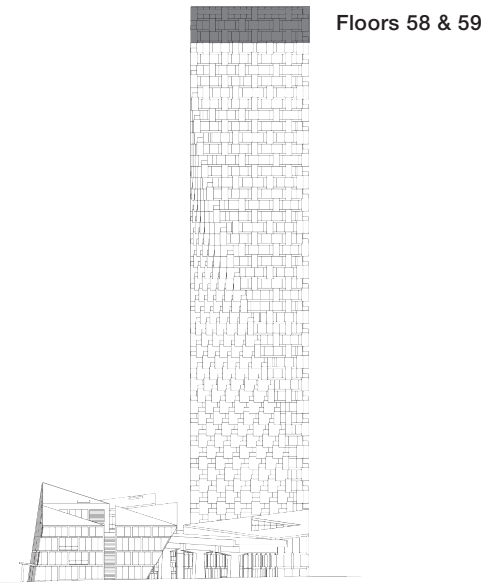
Indoor Living 2152 sq ft
Outdoor Living 481 sqf t

PENTHOUSE 01

TOTAL LIVING 6485 SQ FT

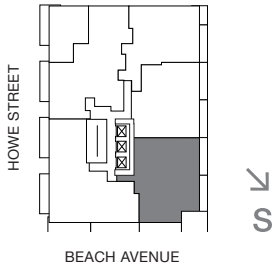
Indoor Living 3863 sq ft
Outdoor Living 2622 sq ft

- Unobstructed views of the length of False Creek and Mount Baker, and out to English Bay
- Double height Grand Salon with retractable skylight
- Upper level and lower level master bedrooms with five-piece ensuites and dressing rooms
Boffi chef's kitchen featuring Miele appliances and custom BIG-designed island
- Private rooftop deck with hot tub



westbank BIG

VANCOUVER
HOUSE



UPPER LEVEL

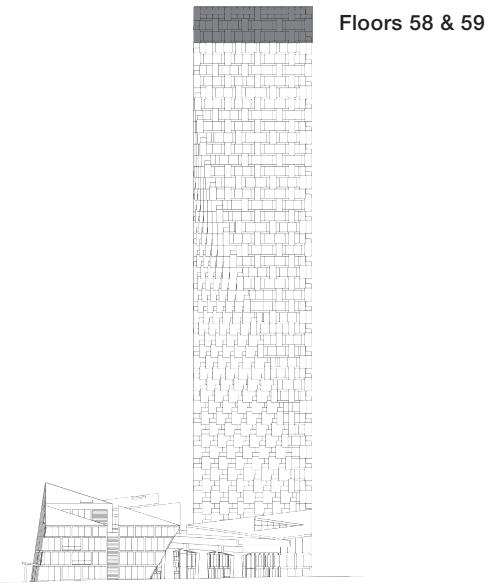
Indoor Living 1711 sq ft
Outdoor Living 510 sqf t

PENTHOUSE
01

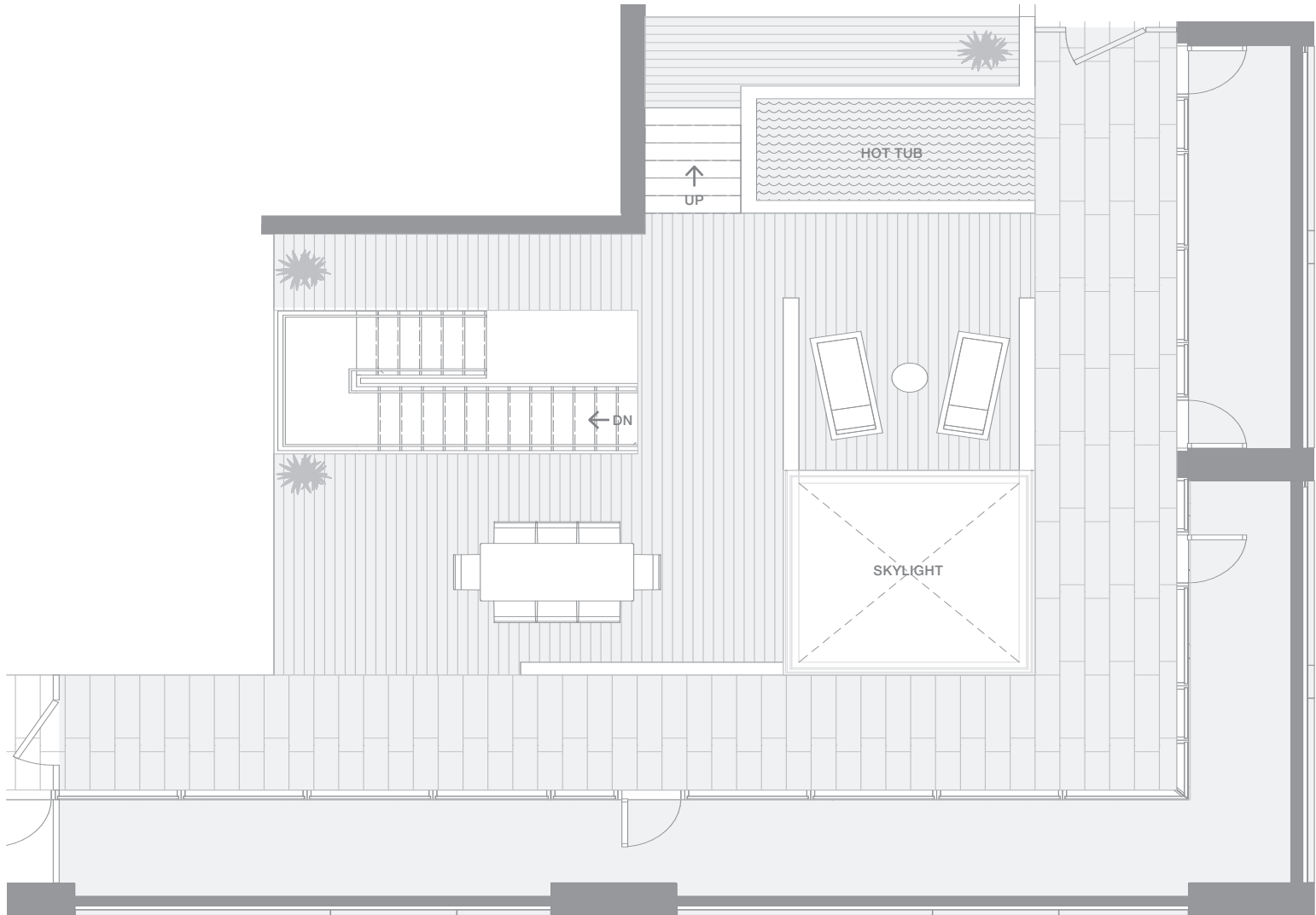
TOTAL LIVING 6485 SQ FT

Indoor Living 3863 sq ft
Outdoor Living 2622 sq ft

- Unobstructed views of the length of False Creek and Mount Baker, and out to English Bay
- Double height Grand Salon with retractable skylight
- Upper level and lower level master bedrooms with five-piece ensuites and dressing rooms
Boffi chef's kitchen featuring Miele appliances and custom BIG-designed island
- Private rooftop deck with hot tub



VANCOUVER
HOUSE



ROOF TERRACE

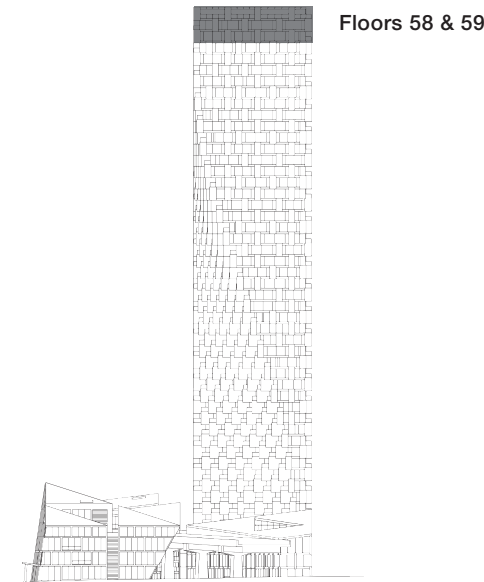
Indoor Living 0 sq ft
Outdoor Living 1631 sq ft

PENTHOUSE
01

TOTAL LIVING 6485 SQ FT

Indoor Living 3863 sq ft
Outdoor Living 2622 sq ft

- Unobstructed views of the length of False Creek and Mount Baker, and out to English Bay
- Double height Grand Salon with retractable skylight
- Upper level and lower level master bedrooms with five-piece ensuites and dressing rooms
Boffi chef's kitchen featuring Miele appliances and custom BIG-designed island
- Private rooftop deck with hot tub



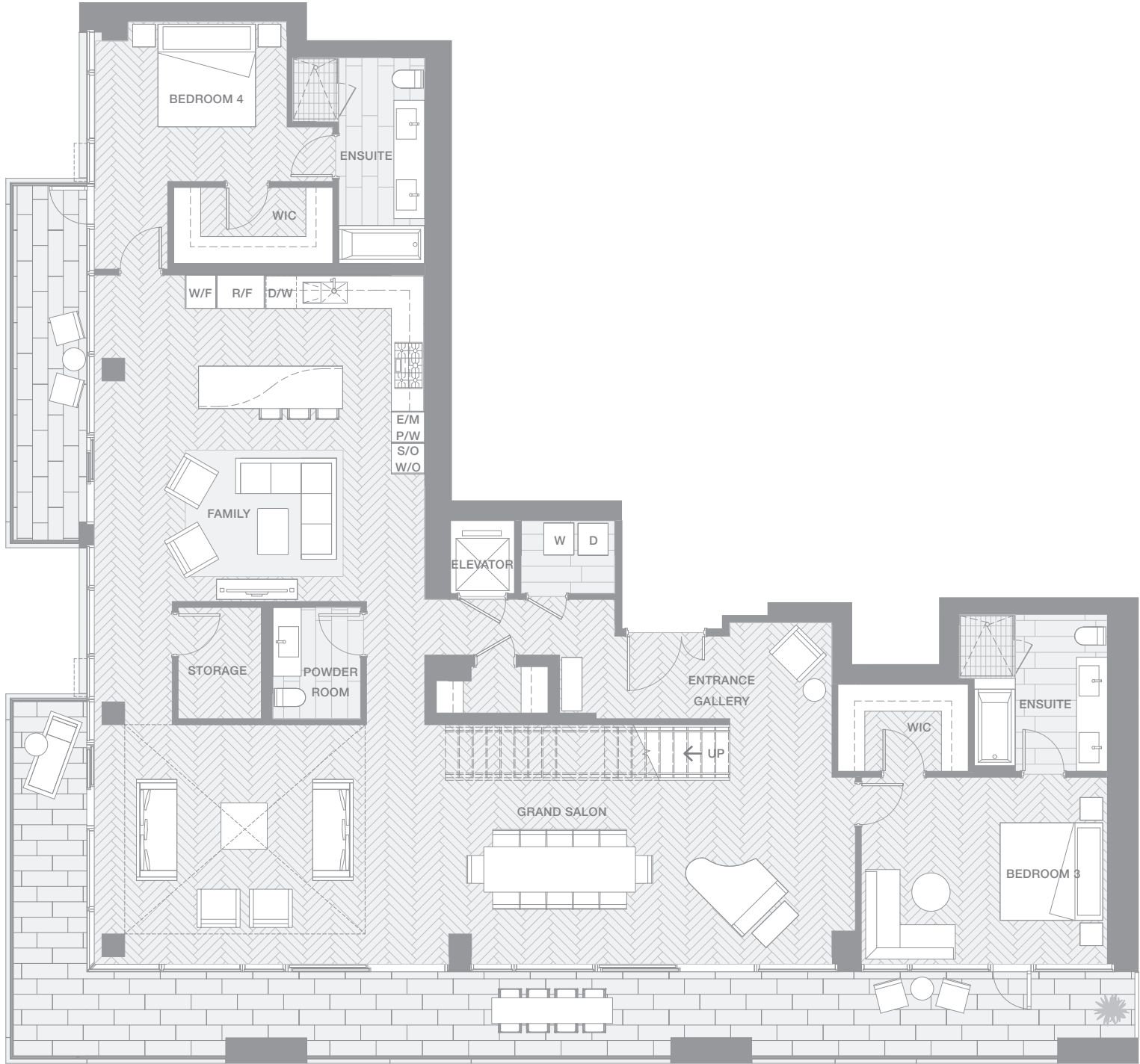
westbank BIG

01

PENTHOUSE

This spectacular corner penthouse offers views of Granville Island, False Creek, the city, and beyond to majestic Mount Baker. Enjoy this castle in the clouds and its expansive balconies and private rooftop. Take tea in the well-appointed double height grand salon while listening to the sound of your custom BIG-designed Fazioli piano, and enjoy the light and views afforded by the wrap-around terrace with two different exposures. The retractable skylight open both the roof and the balcony sliders, offering residents a true sun-king experience, augmented by the rooftop hot tub. The kitchen and family room are flooded with morning light, while the library offers a contemplative space. Two of the three bedrooms, along with a tranquil sitting area, are sequestered on the upper level for privacy, accessible from the grand staircase and private elevator. The master bedroom has a deluxe five-piece ensuite, generous dressing room and private terrace.

VANCOUVER HOUSE



LOWER LEVEL

Indoor Living 2497 sq ft
Outdoor Living 656 sq ft

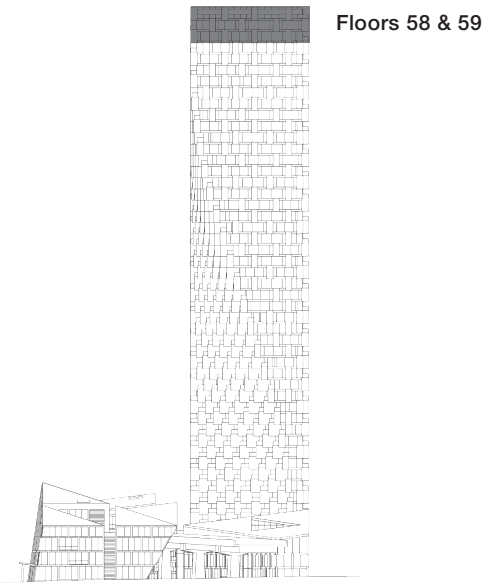
PENTHOUSE 02

TOTAL LIVING 7669 SQ FT

Indoor Living 4483 sq ft

Outdoor Living 3187 sq ft

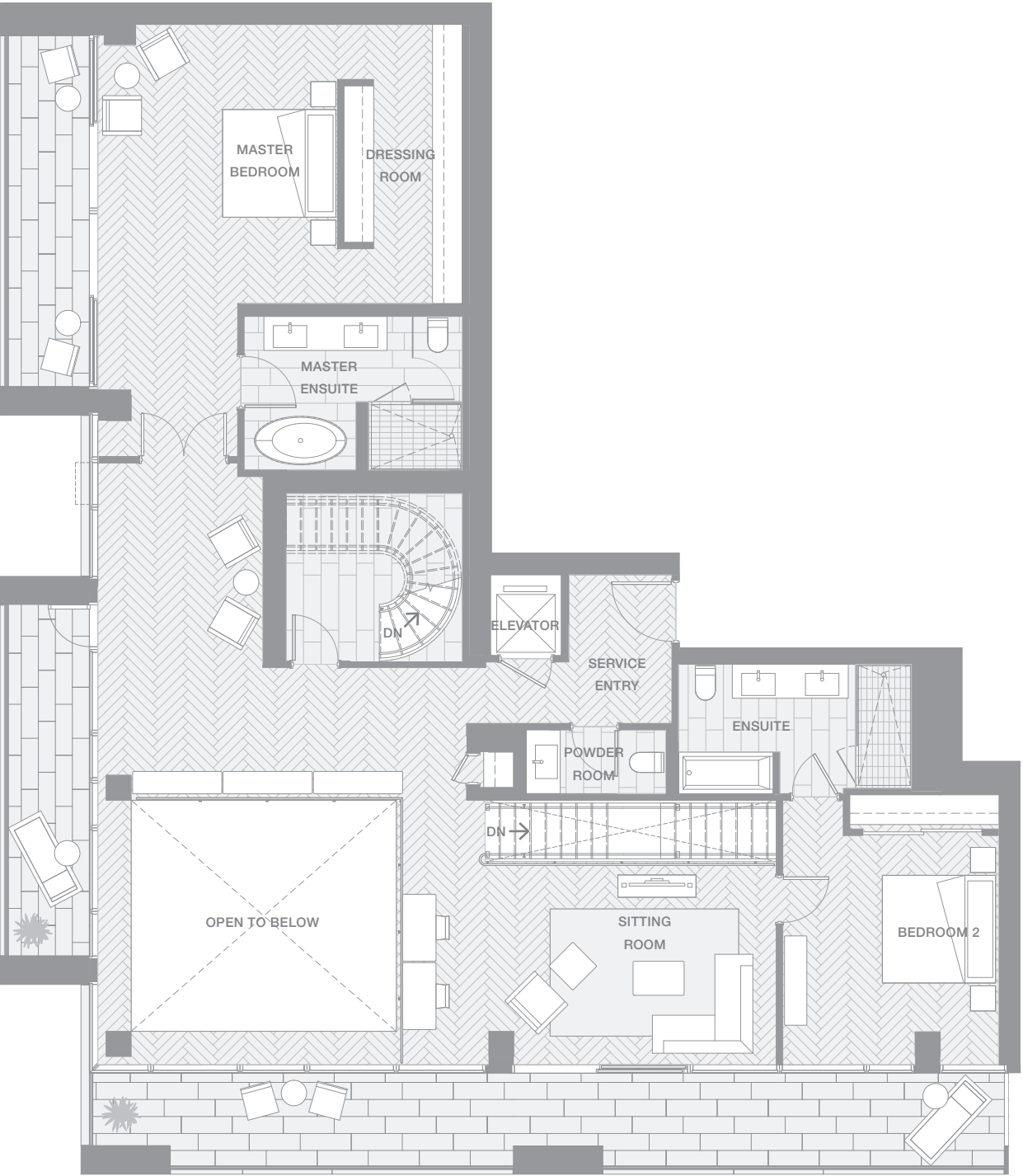
- Spanning entire southwest corner with unobstructed views from False Creek to English Bay
- Double height Grand Salon with retractable skylight
- Upper level and lower level master bedrooms with five-piece ensuites and dressing rooms
Boffi chef's kitchen featuring Miele appliances and custom BIG-designed island
- Private rooftop deck with hot tub



westbank

BIG

VANCOUVER HOUSE



UPPER LEVEL

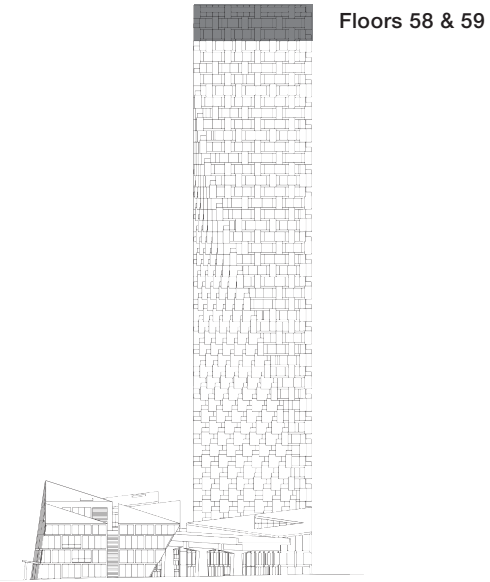
Indoor Living 1986 sq ft
Outdoor Living 574 sqf t

PENTHOUSE 02

TOTAL LIVING 7669 SQ FT

Indoor Living 4483 sq ft
Outdoor Living 3187 sq ft

- Spanning entire southwest corner with unobstructed views from False Creek to English Bay
- Double height Grand Salon with retractable skylight
- Upper level and lower level master bedrooms with five-piece ensuites and dressing rooms
Boffi chef's kitchen featuring Miele appliances and custom BIG-designed island
- Private rooftop deck with hot tub



VANCOUVER HOUSE



ROOF TERRACE

Indoor Living 0 sq ft
Outdoor Living 1956 sq ft

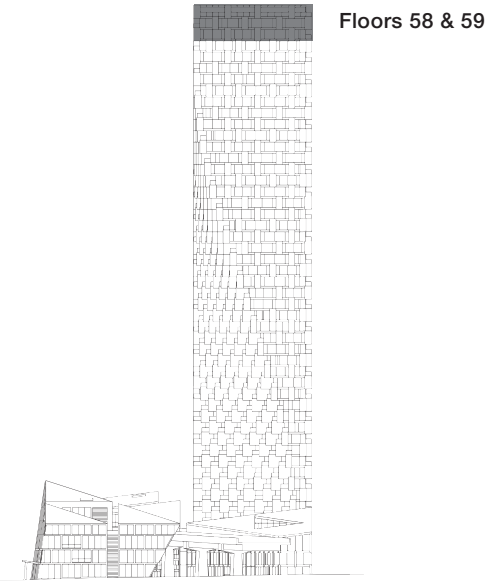
PENTHOUSE 02

TOTAL LIVING 7669 SQ FT

Indoor Living 4483 sq ft

Outdoor Living 3187 sq ft

- Spanning entire southwest corner with unobstructed views from False Creek to English Bay
- Double height Grand Salon with retractable skylight
- Upper level and lower level master bedrooms with five-piece ensuites and dressing rooms
Boffi chef's kitchen featuring Miele appliances and custom BIG-designed island
- Private rooftop deck with hot tub



westbank

BIG

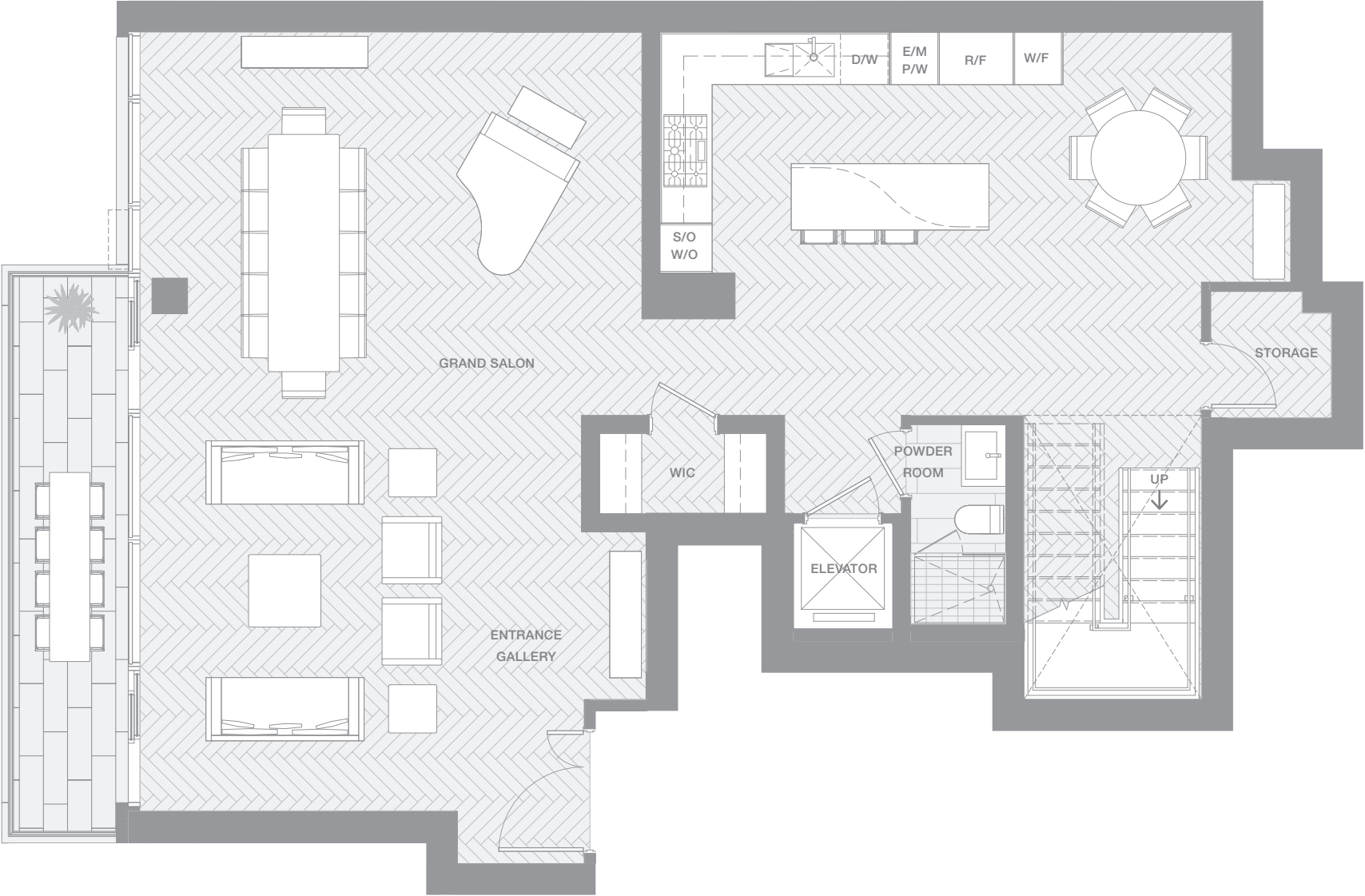
02

PENTHOUSE

This gorgeous sky-house offers all the comforts of home on the top of Vancouver House. A sun-soaked southern terrace embraces the double height grand salon living and dining area – generous enough to accommodate your custom BIG-designed Fazioli piano. Enjoy the light and views afforded by the wrap-around terrace with southern and western exposures. Retractable skylights open both the roof and the balcony sliders, offering residents a true sun-king experience, augmented by the rooftop hot tub. Two of the four bedrooms, along with a tranquil sitting area, are sequestered on the upper level for privacy, accessible from the grand staircase and private elevator. The master bedroom has a deluxe five-piece ensuite, generous dressing room and private terrace. Take in views of Granville Island, Point Grey, English Bay and Stanley Park from this palatial penthouse.

VANCOUVER HOUSE

PENTHOUSE 03



LOWER LEVEL

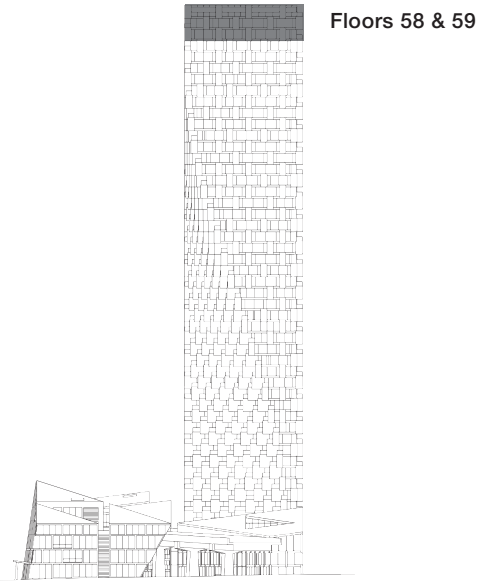
Indoor Living 1377 sq ft
Outdoor Living 126 sq ft

TOTAL LIVING 4320 SQ FT

Indoor Living 3265 sq ft

Outdoor Living 1055 sq ft

- Unobstructed views of the length of English Bay, Stanley Park, and the Lions Gate Bridge
- Boffi chef's kitchen featuring Miele appliances and custom BIG-designed island
Private upper level with three spacious bedrooms with city and North Shore Mountain views
- Boffi chef's kitchen featuring Miele appliances and custom BIG-designed island
- Private rooftop deck with hot tub



westbank

BIG

VANCOUVER HOUSE



UPPER LEVEL

Indoor Living 1888 sq ft
Outdoor Living 126 sqf t

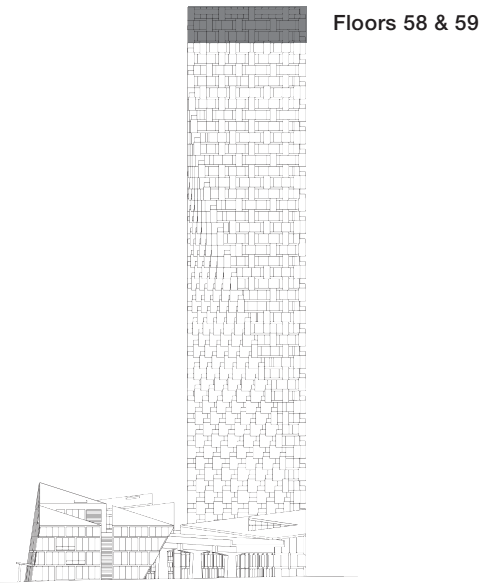
PENTHOUSE 03

TOTAL LIVING 4320 SQ FT

Indoor Living 3265 sq ft

Outdoor Living 1055 sq ft

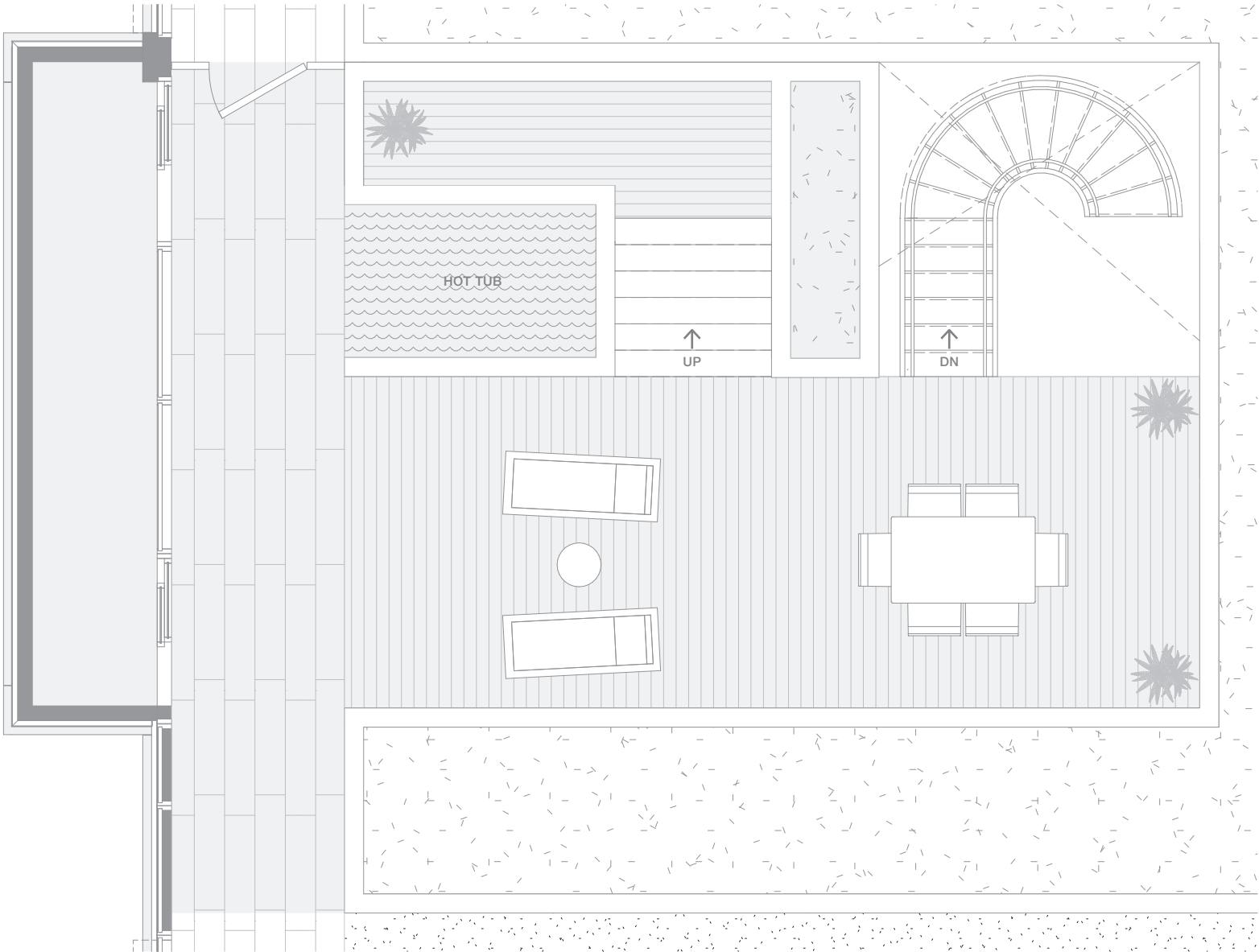
- Unobstructed views of the length of English Bay, Stanley Park, and the Lions Gate Bridge
- Boffi chef's kitchen featuring Miele appliances and custom BIG-designed island
Private upper level with three spacious bedrooms with city and North Shore Mountain views
- Boffi chef's kitchen featuring Miele appliances and custom BIG-designed island
- Private rooftop deck with hot tub



westbank

BIG

VANCOUVER HOUSE



ROOF TERRACE

Indoor Living 0 sq ft
Outdoor Living 804 sqf t

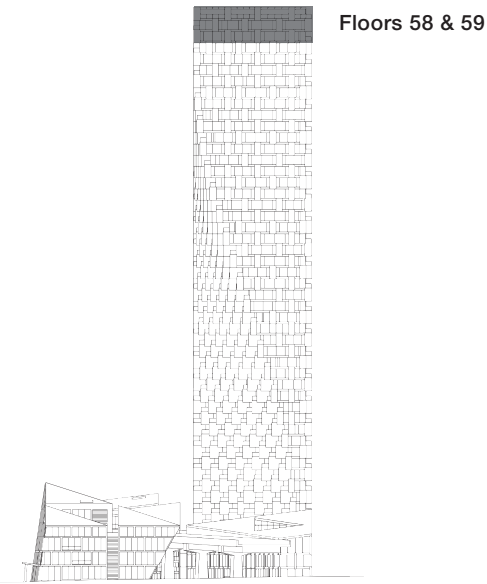
PENTHOUSE 03

TOTAL LIVING 4320 SQ FT

Indoor Living 3265 sq ft

Outdoor Living 1055 sq ft

- Unobstructed views of the length of English Bay, Stanley Park, and the Lions Gate Bridge
- Boffi chef's kitchen featuring Miele appliances and custom BIG-designed island
Private upper level with three spacious bedrooms with city and North Shore Mountain views
- Boffi chef's kitchen featuring Miele appliances and custom BIG-designed island
- Private rooftop deck with hot tub



westbank

BIG

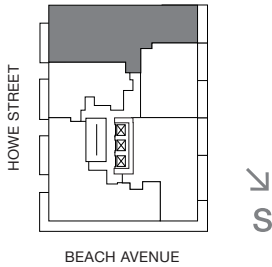
03

PENTHOUSE

The highlight of this lovely penthouse is undoubtedly the stunning vista of English Bay, Point Grey, Stanley Park and beyond to the Lions Gate Bridge. Take them all in from the double height grand salon that soaks up sunsets from its generous west-facing terrace, or from your private rooftop. A chef's kitchen opens onto a breakfast nook ideal for intimate gatherings. The three bedrooms are sequestered on the upper level for privacy, accessible from the grand staircase and private elevator. The master suite offers his and her dressing rooms, a marble-clad 5-piece ensuite and a terrace with unobstructed views.

VANCOUVER HOUSE

PENTHOUSE 05

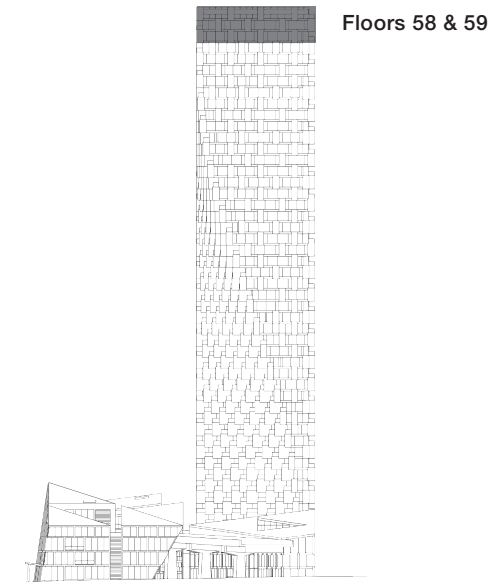


LOWER LEVEL

Indoor Living 2737 sq ft
Outdoor Living 247 sq ft

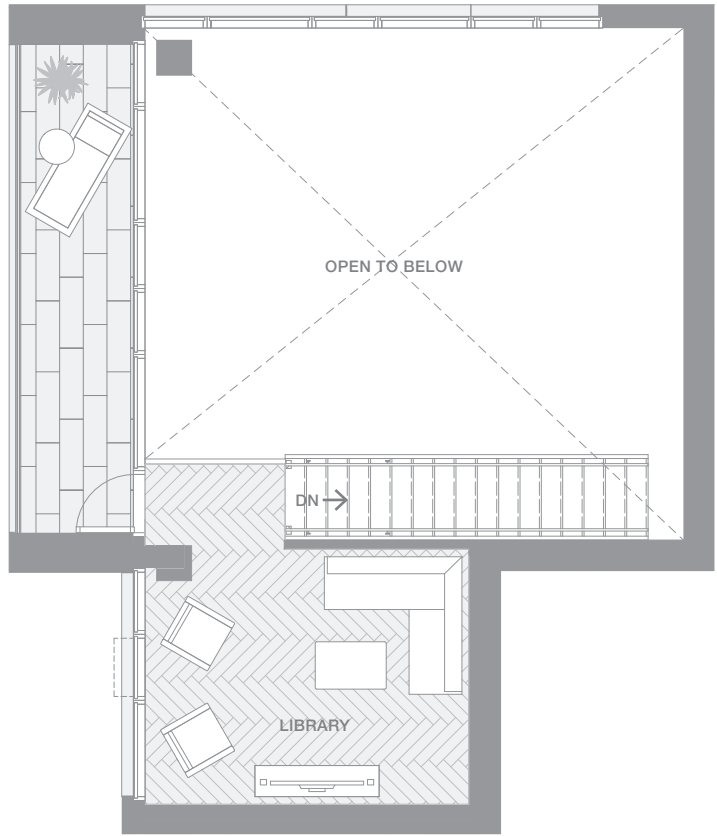
TOTAL LIVING 7537 SF
Indoor Living 4449 sf
Outdoor Living 3087 sf

- Spanning entire North facade with unobstructed views from English Bay to False Creek including Stanley Park and downtown Vancouver
- Double height Grand Salon with retractable skylight
- Boffi chef's kitchen featuring Miele appliances and custom BIG-designed island
Spacious master bedroom on the upper level with five-piece ensuite, dressing room and terrace
- Private rooftop deck with hot tub



VANCOUVER HOUSE

PENTHOUSE 05



UPPER LEVEL

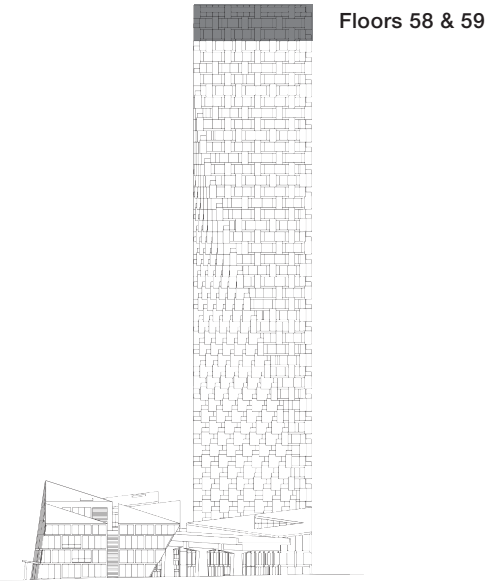
Indoor Living 1713 sq ft
Outdoor Living 306 sqf t

TOTAL LIVING 7537 SF

Indoor Living 4449 sf

Outdoor Living 3087 sf

- Spanning entire North facade with unobstructed views from English Bay to False Creek including Stanley Park and downtown Vancouver
- Double height Grand Salon with retractable skylight
- Boffi chef's kitchen featuring Miele appliances and custom BIG-designed island
Spacious master bedroom on the upper level with five-piece ensuite, dressing room and terrace
- Private rooftop deck with hot tub

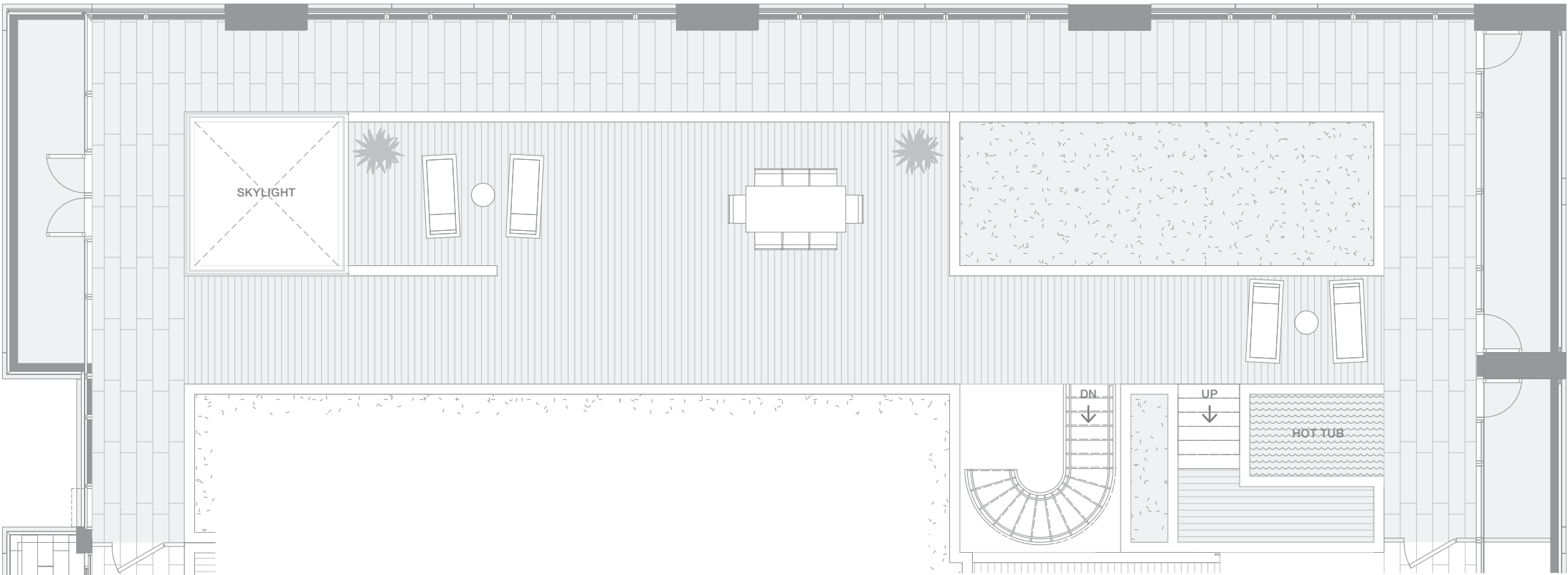


westbank

BIG

VANCOUVER HOUSE

PENTHOUSE 05



ROOF TERRACE

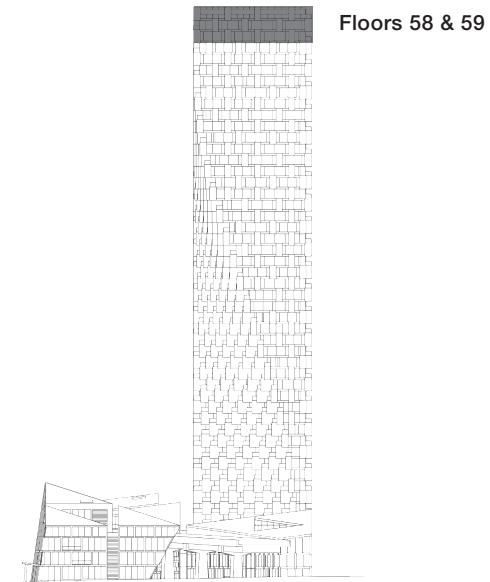
Indoor Living 0 sq ft
Outdoor Living 2535 sq ft

TOTAL LIVING 7537 SF

Indoor Living 4449 sf

Outdoor Living 3087 sf

- Spanning entire North facade with unobstructed views from English Bay to False Creek including Stanley Park and downtown Vancouver
- Double height Grand Salon with retractable skylight
- Boffi chef's kitchen featuring Miele appliances and custom BIG-designed island
Spacious master bedroom on the upper level with five-piece ensuite, dressing room and terrace
- Private rooftop deck with hot tub



westbank

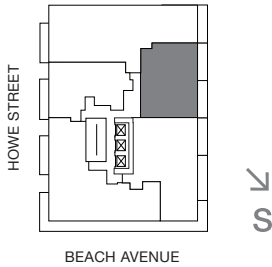
BIG

05

PENTHOUSE

This heavenly penthouse offers unobstructed views of English Bay, Stanley Park, the Lions Gate Bridge, as well as the entire span of False Creek and beyond to Mount Baker. A copper-clad terrace frames the double height grand salon – generous enough to accommodate your custom BIG-designed Fazioli piano. Take the stairs up to the upper level library, a unique sanctuary within this palatial home. The upper level master bedroom is sequestered for privacy, accessible by the grand staircase or private elevator, and boasts wraparound floor-to-ceiling glazing, a large dressing room, five-piece ensuite, and a private terrace to enjoy the stunning views. Take it all in from the rooftop hot tub and feel like you’re on top of the world.

VANCOUVER HOUSE



LOWER LEVEL

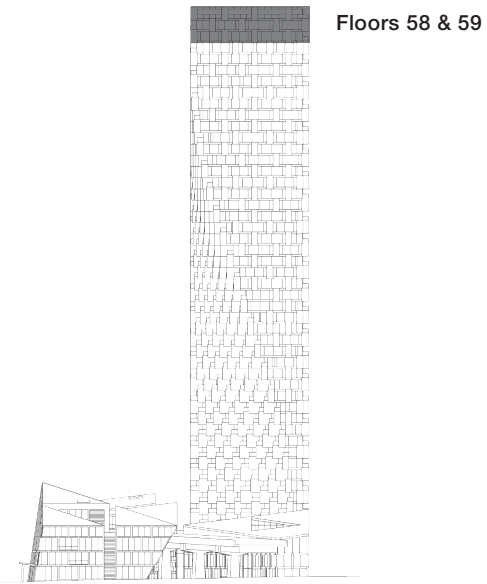
Indoor Living 1516 sq ft
Outdoor Living 233 sq ft

PENTHOUSE 06

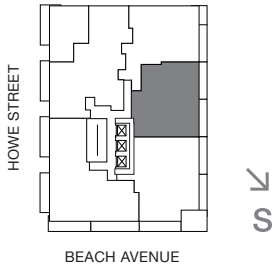
TOTAL LIVING 4430 SQ FT

Indoor Living 2974 sq ft
Outdoor Living 1456 sq ft

- Unobstructed views that span False Creek and Mount Baker with direct access to outdoor space from all principle rooms
- Boffi chef's kitchen featuring Miele appliances and custom BIG-designed island Upper level and lower level master bedrooms with five-piece ensuites and dressing rooms
- Private rooftop deck with hot tub



VANCOUVER HOUSE



UPPER LEVEL

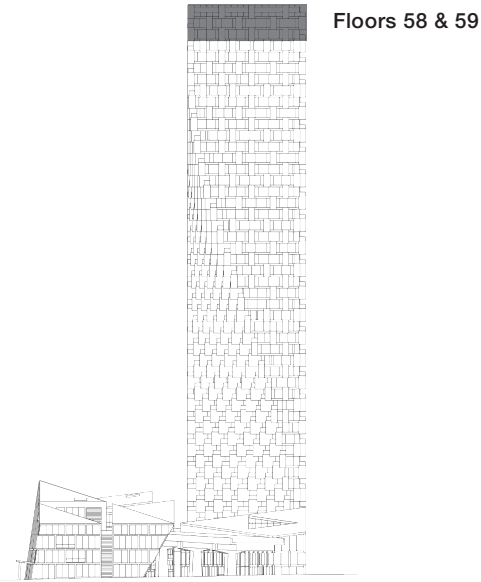
Indoor Living 1458 sq ft
Outdoor Living 234 sqf t

PENTHOUSE 06

TOTAL LIVING 4430 SQ FT

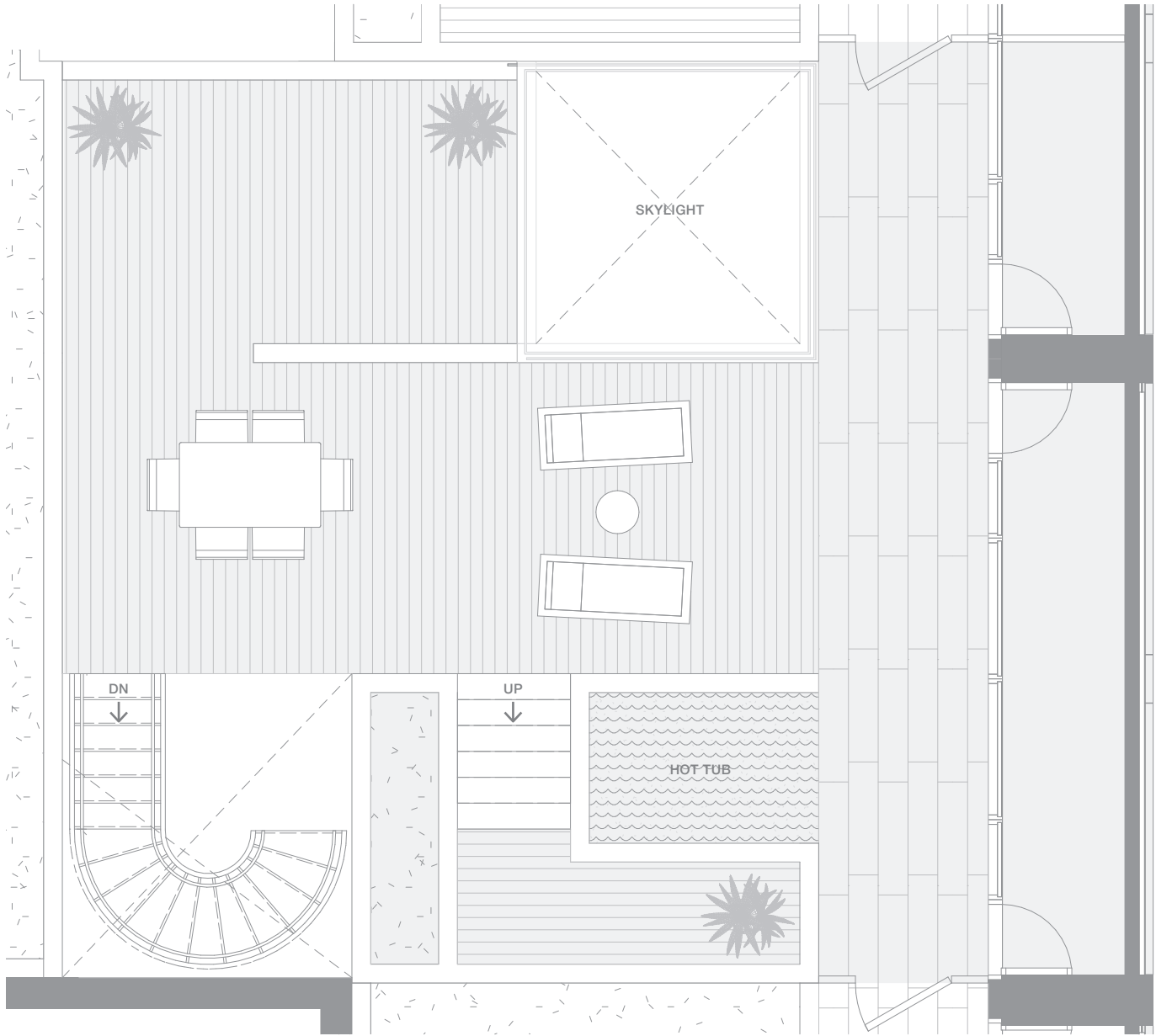
Indoor Living 2974 sq ft
Outdoor Living 1456 sq ft

- Unobstructed views that span False Creek and Mount Baker with direct access to outdoor space from all principle rooms
- Boffi chef's kitchen featuring Miele appliances and custom BIG-designed island Upper level and lower level master bedrooms with five-piece ensuites and dressing rooms
- Private rooftop deck with hot tub



westbank BIG

VANCOUVER HOUSE



ROOF TERRACE

Indoor Living 0 sq ft
Outdoor Living 989 sq ft

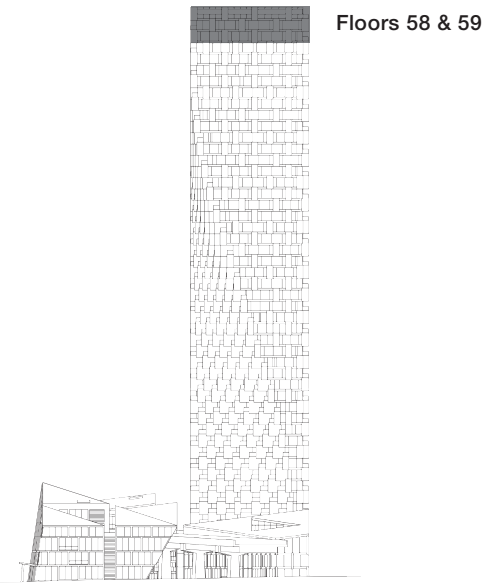
PENTHOUSE 06

TOTAL LIVING 4430 SQ FT

Indoor Living 2974 sq ft

Outdoor Living 1456 sq ft

- Unobstructed views that span False Creek and Mount Baker with direct access to outdoor space from all principle rooms
- Boffi chef's kitchen featuring Miele appliances and custom BIG-designed island
Upper level and lower level master bedrooms with five-piece ensuites and dressing rooms
- Private rooftop deck with hot tub



westbank

BIG

06

PENTHOUSE

This spectacular penthouse takes in unobstructed views of False Creek, the city and beyond to Mount Baker. The expansive grand salon is double height and comes complete with a custom BIG-designed Fazioli piano. A generous copper-clad terrace runs the entire length epitomizing the indoor-outdoor aesthetic. The chef's kitchen with custom BIG-designed island opens onto a family room that ideal for intimate gatherings. Two of the four bedrooms are sequestered on the upper level for privacy, accessible from the grand staircase or private elevator. The spacious master bedroom comes complete with a dressing room, five-piece ensuite and terrace. Relax and contemplate the gorgeous vistas from the rooftop hot tub.