

# 2300

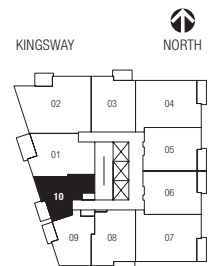
## KINGSWAY

THE TIME + PLACE

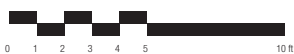
# BUILDING 1

# PLAN A

JUNIOR 1 BED • 411SF



LEVELS 3 TO 21  
ALSO AVAILABLE ON LEVEL 2



# 2300

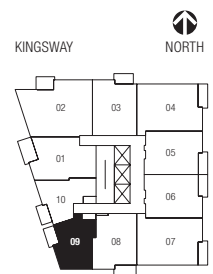
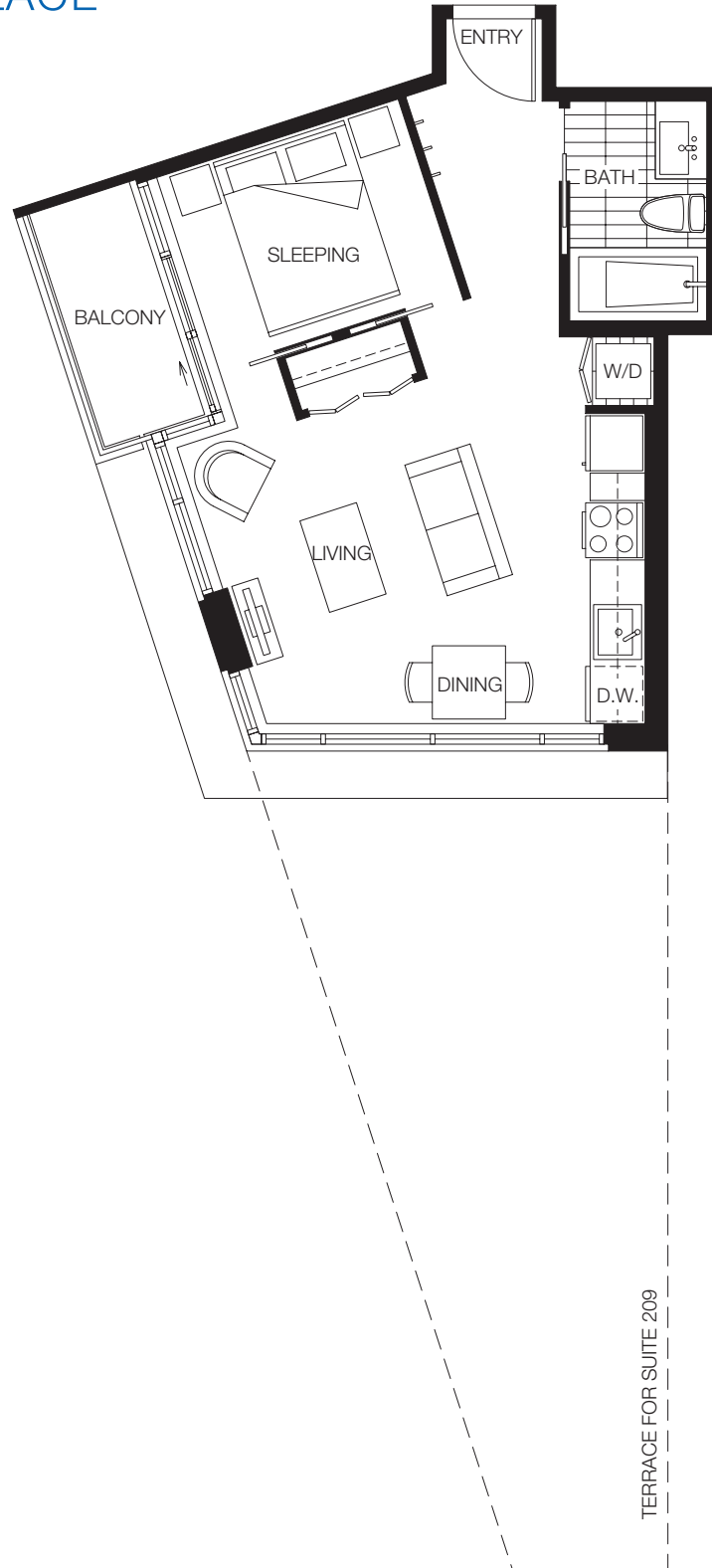
## KINGSWAY

THE TIME+PLACE

# BUILDING 1

# PLAN B

JUNIOR 1 BED • 436SF



**LEVEL 3 TO 21**  
ALSO AVAILABLE ON LEVEL 2

# 2300

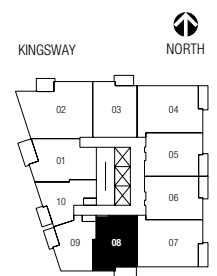
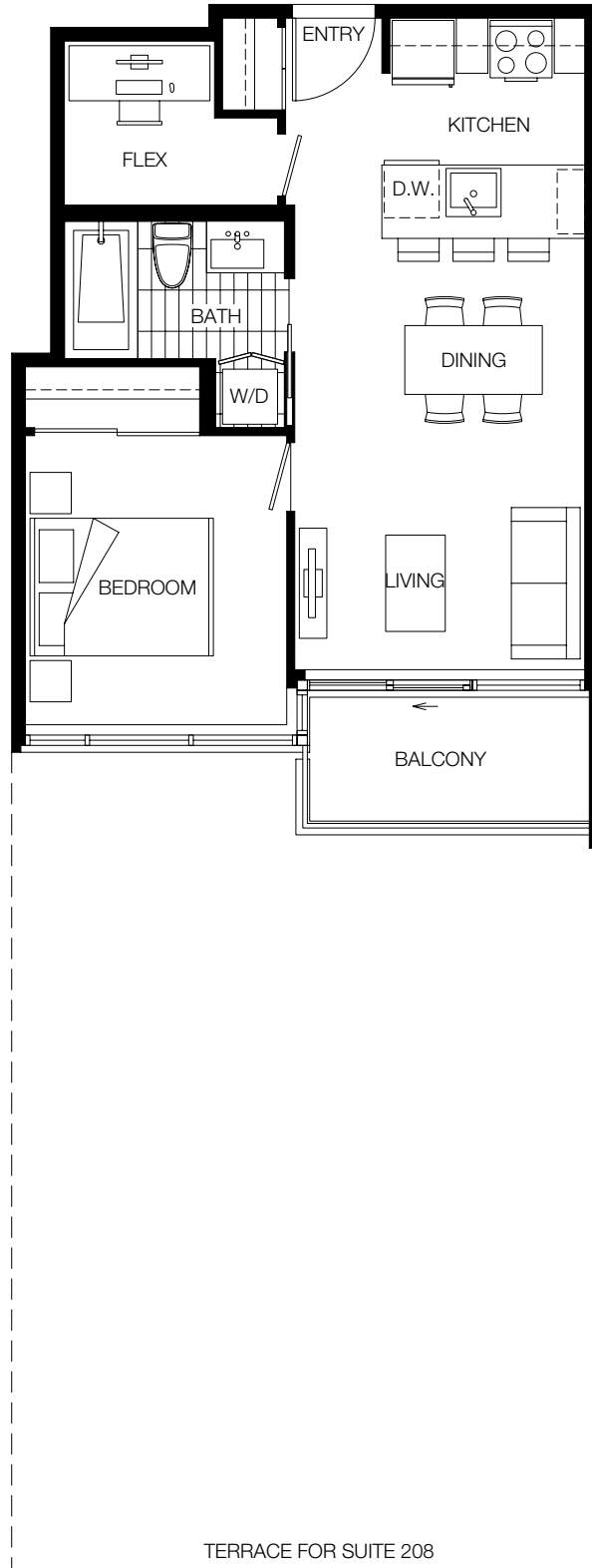
## KINGSWAY

THE TIME+PLACE

# BUILDING 1

# PLAN C

1 BED + FLEX · 521SF



LEVELS 3 TO 21  
ALSO AVAILABLE ON LEVEL 2



Dimensions, sizes, specifications, layouts and materials are approximate only and subject to change without notice. Floorplates and unit numbers will vary between floors. Please see a sales representative for more details. 04.23.2010. E.&O.E.

# 2300

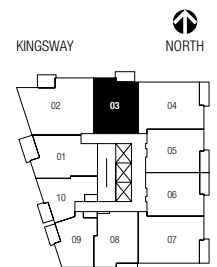
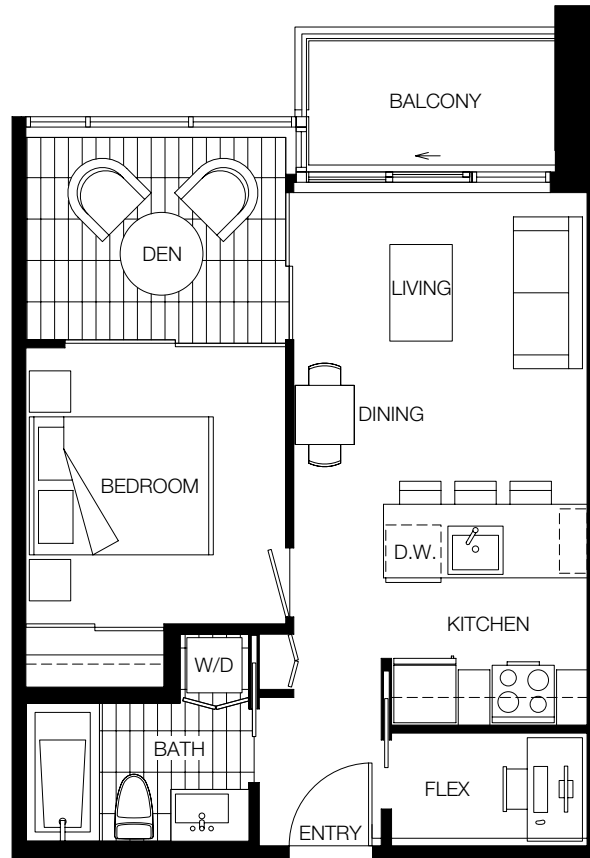
## KINGSWAY

THE TIME + PLACE

# BUILDING 1

# PLAN D

1 BED + DEN + FLEX · 544SF



LEVELS 3 TO 21  
ALSO AVAILABLE ON LEVEL 2, 22, 23



# 2300

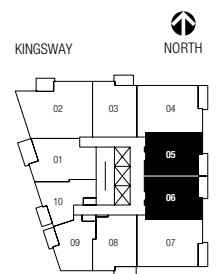
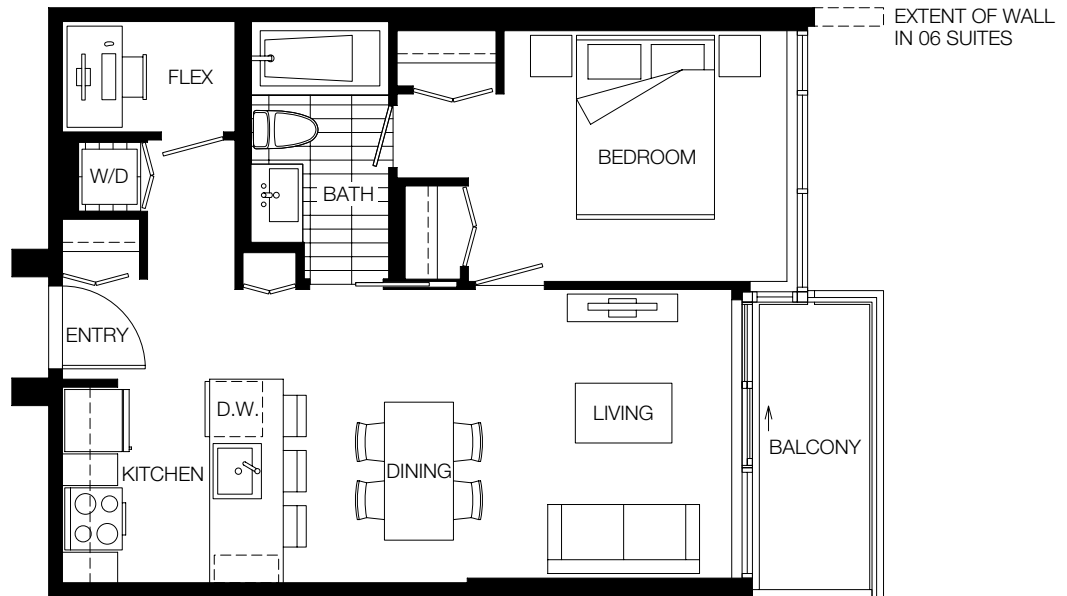
## KINGSWAY

THE TIME + PLACE

# BUILDING 1

# PLAN E

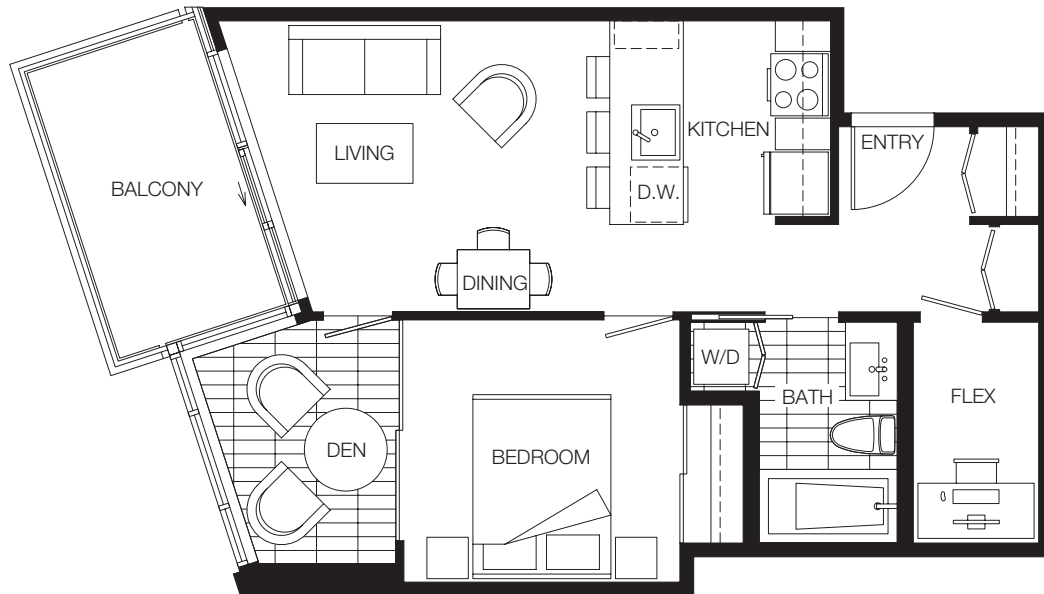
1 BED + FLEX · 547SF



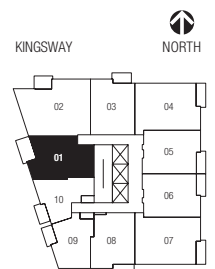
LEVELS 3 TO 21  
ALSO AVAILABLE ON LEVEL 2

**2300**  
**KINGSWAY**  
 THE TIME + PLACE

**BUILDING 1**  
**PLAN F**  
 1 BED + DEN + FLEX • 575SF



Dimensions, sizes, specifications, layouts and materials are approximate only and subject to change without notice. Floorplates and unit numbers will vary between floors. Please see a sales representative for more details. 04.23.2010. E.&O.E.



**LEVELS 3 TO 21**  
 ALSO AVAILABLE ON LEVEL 2, 22, 23

# 2300

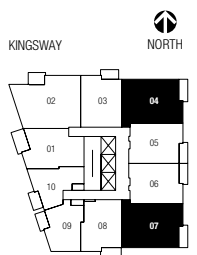
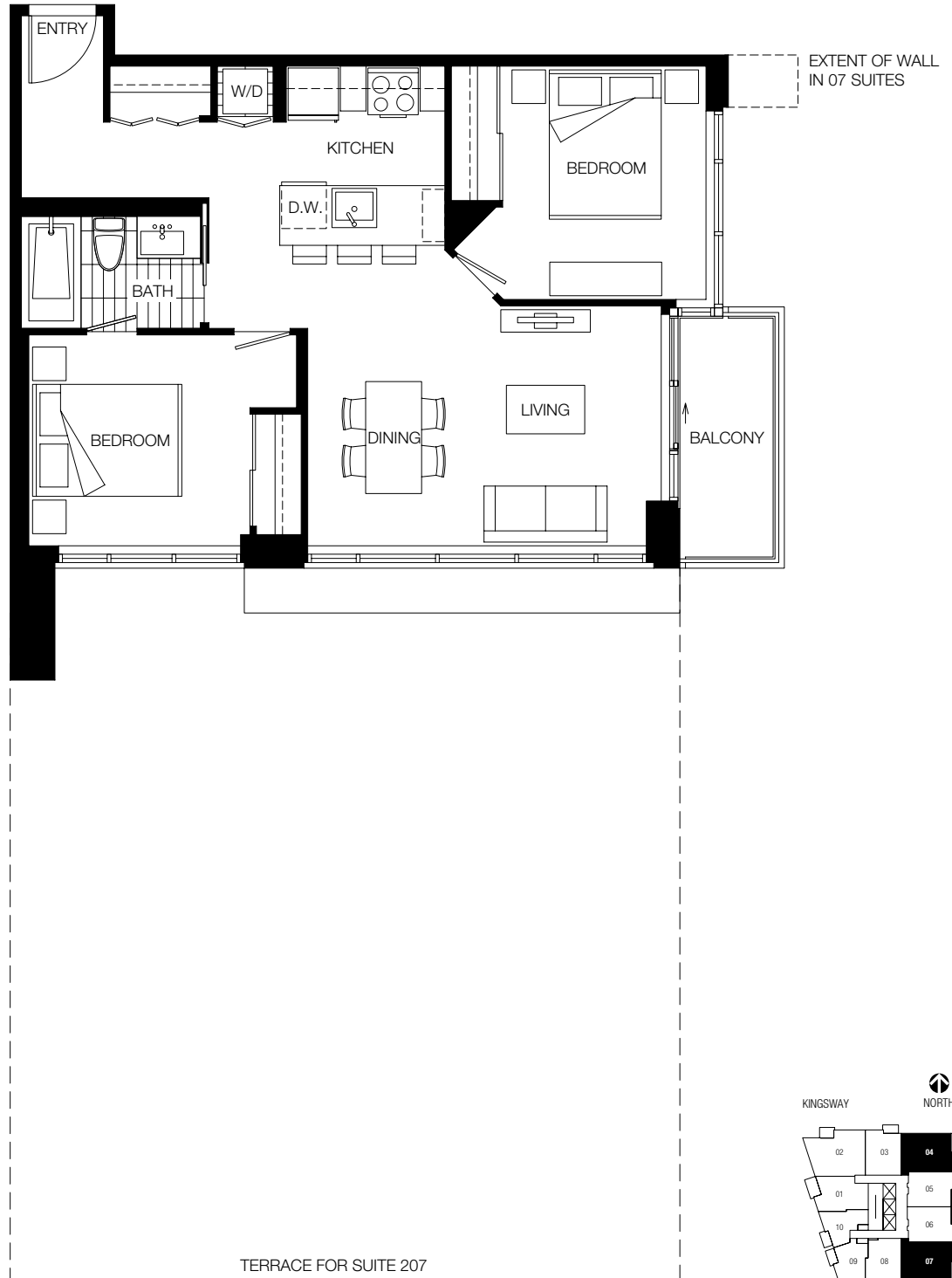
## KINGSWAY

THE TIME+PLACE

# BUILDING 1

# PLAN G

2 BED • 699 SF



LEVELS 3 TO 21  
ALSO AVAILABLE ON LEVEL 2



# 2300

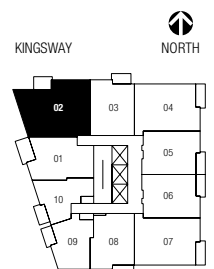
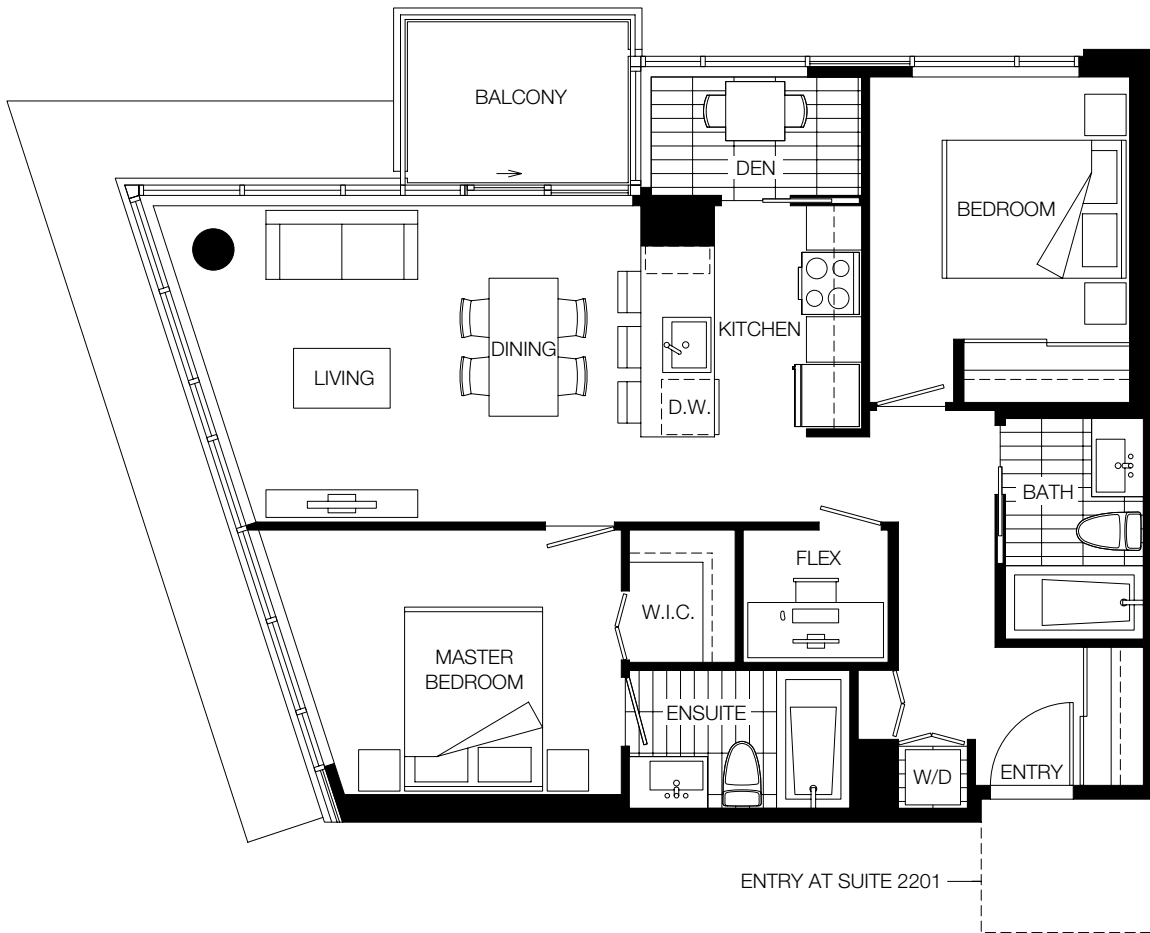
## KINGSWAY

THE TIME + PLACE

# BUILDING 1

# PLAN H

2BED + DEN + FLEX • 843-873SF



LEVELS 3 TO 21  
ALSO AVAILABLE ON LEVEL 2, 22, 23, PH





# 2300

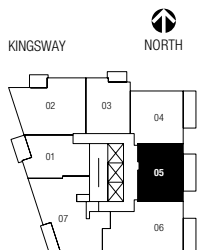
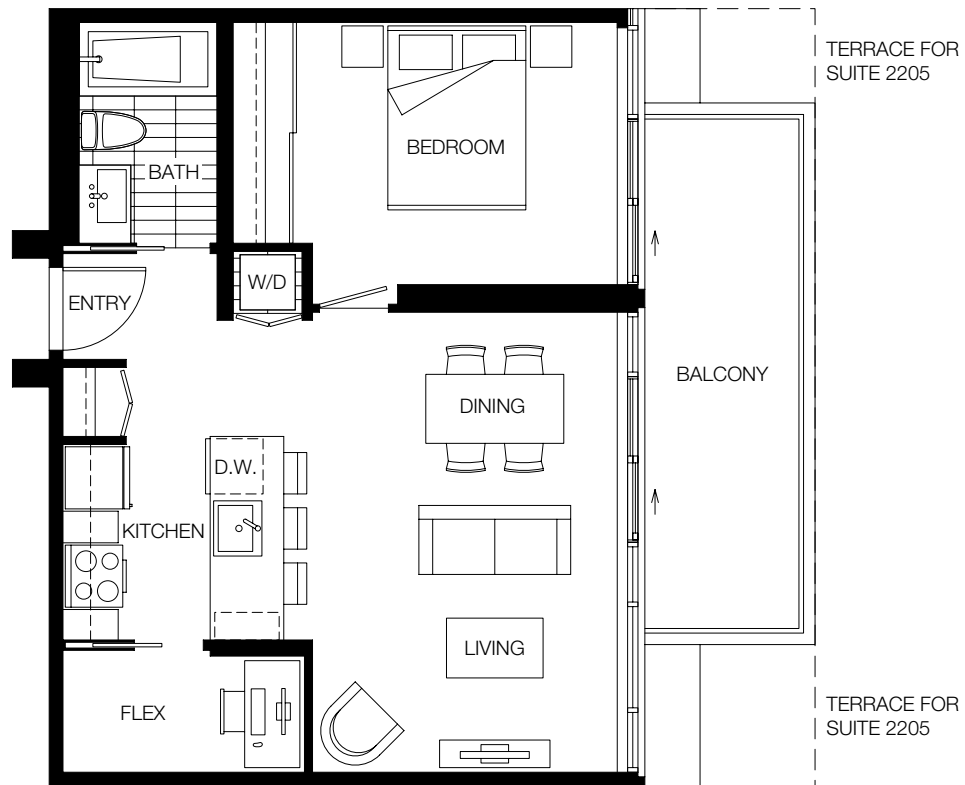
## KINGSWAY

THE TIME+PLACE

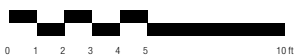
# BUILDING 1

# PLAN J

1 BED + FLEX · 585SF  
9'6" CEILING HEIGHT



**LEVEL 23**  
ALSO AVAILABLE ON LEVEL 22



# 2300

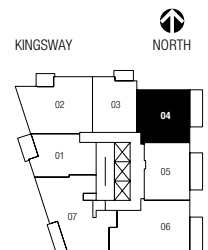
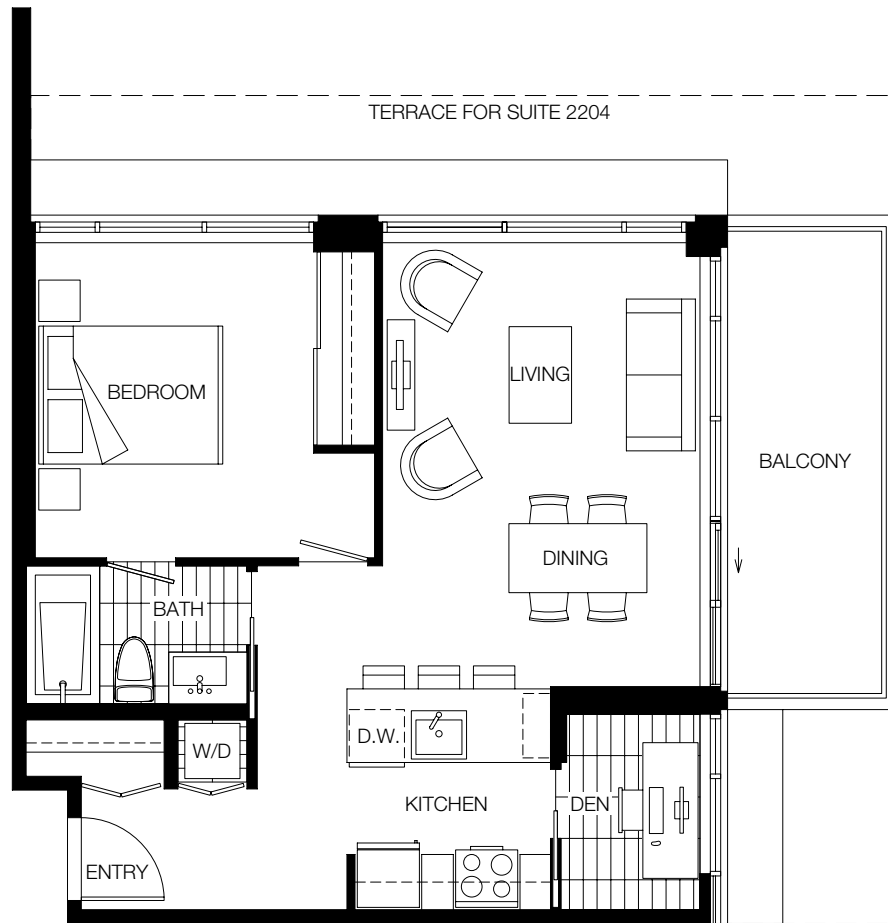
## KINGSWAY

THE TIME + PLACE

# BUILDING 1

# PLAN K

1 BED + DEN · 630SF  
9'6" CEILING HEIGHT



**LEVEL 23**  
ALSO AVAILABLE ON LEVEL 22



Dimensions, sizes, specifications, layouts and materials are approximate only and subject to change without notice. Floorplates and unit numbers will vary between floors. Please see a sales representative for more details. 04.23.2010. E.&O.E.

# 2300

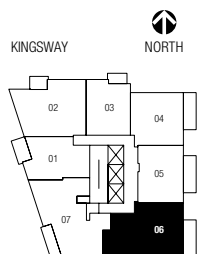
## KINGSWAY

THE TIME + PLACE

# BUILDING 1

# PLAN L

2 BED + DEN + FLEX · 869SF  
 9'6" CEILING HEIGHT



**LEVEL 23**  
 ALSO AVAILABLE ON LEVEL 22



Dimensions, sizes, specifications, layouts and materials are approximate only and subject to change without notice. Floorplates and unit numbers will vary between floors. Please see a sales representative for more details. 04.23.2010. E.&O.E.

# 2300

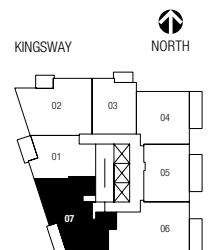
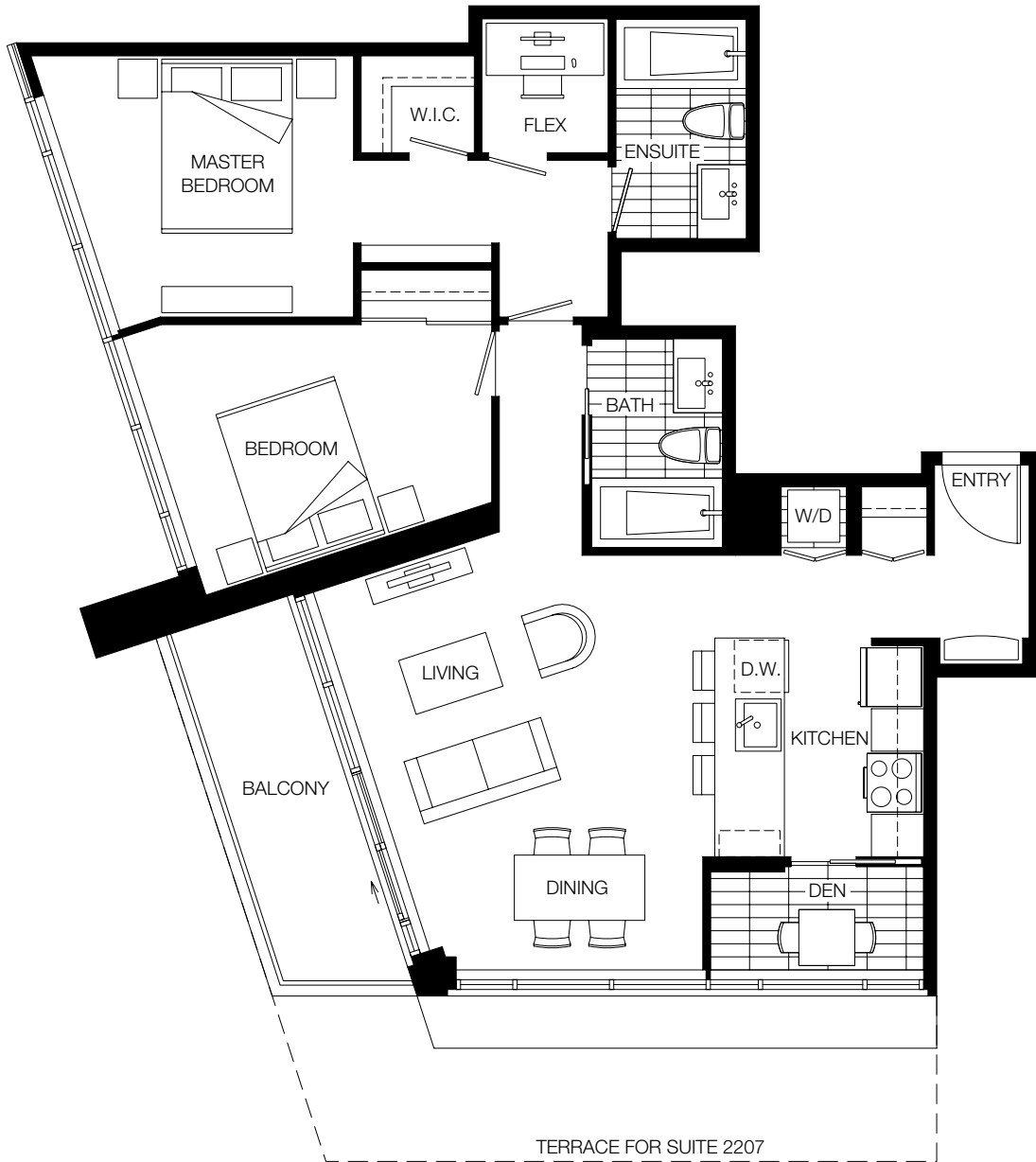
## KINGSWAY

THE TIME + PLACE

# BUILDING 1

# PLAN M

2 BED + DEN + FLEX · 918SF  
9'6" CEILING HEIGHT



**LEVEL 23**  
ALSO AVAILABLE ON LEVEL 22

# 2300

## KINGSWAY

THE TIME + PLACE

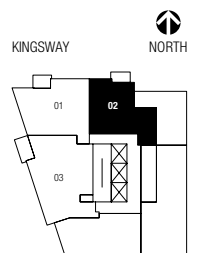
# BUILDING 1

# PLAN N

1BED+DEN+EB+FLEX · 733SF  
 9'6" CEILING HEIGHT



Dimensions, sizes, specifications, layouts and materials are approximate only and subject to change without notice. Floorplates and unit numbers will vary between floors. Please see a sales representative for more details. 04.23.2010. E.&O.E.



PENTHOUSE

# 2300

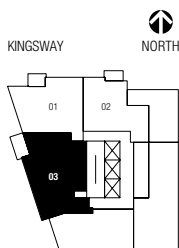
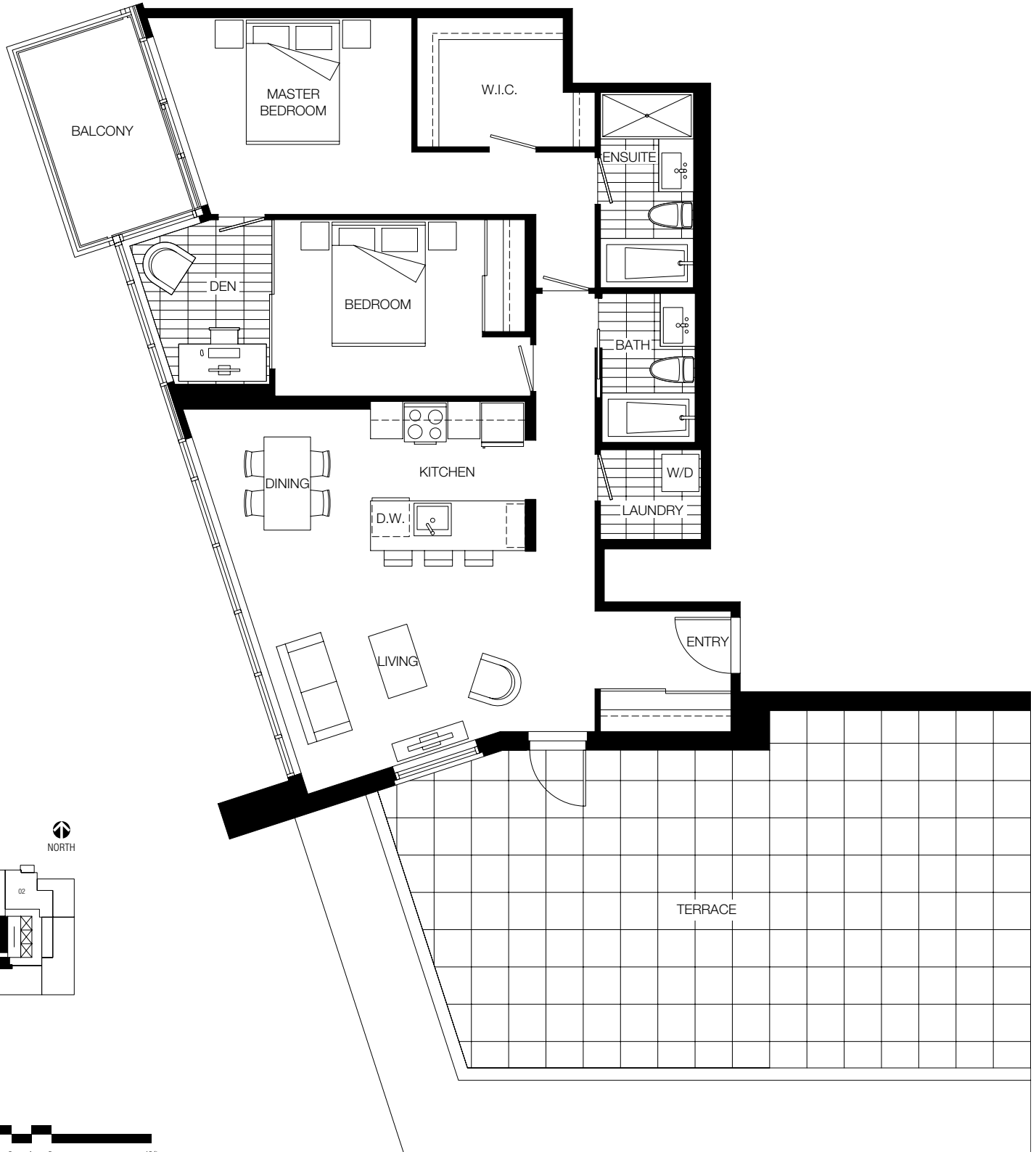
## KINGSWAY

THE TIME + PLACE

# BUILDING 1

# PLAN P

2 BED + DEN · 1089SF  
9'6" CEILING HEIGHT



PENTHOUSE

