

TOWNHOME 1 | 2 BED + 2 BATH + POWDER + FLEX

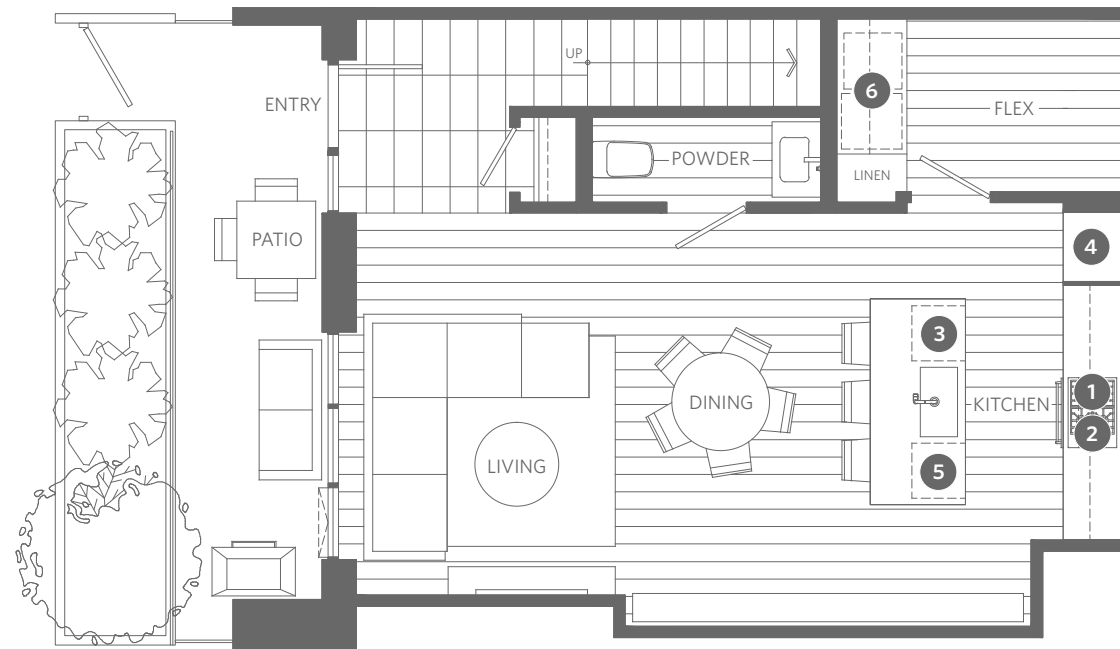
INTERIOR 1,364 SF

EXTERIOR 145 SF

THE PACIFIC

BY GROSVENOR

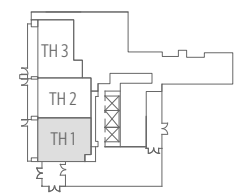
- 1** 30" gas cooktop by Wolf
30" integrated hood fan by Faber
- 2** 24" convection oven by Wolf
- 3** 24" microwave by Wolf
- 4** 30" integrated refrigerator with freezer drawers by Sub-Zero
- 5** 24" integrated dishwasher by Miele
- 6** High-efficiency washer and dryer by Miele (side by side)
- 7** Custom closet by Snaidero



MAIN LEVEL



SECOND LEVEL



LEVEL 1

