



# The Architecture

## A Building that Stands Apart

At 19 storeys tall, the scale of The Jervis is respectful of the existing neighbourhood. Its dramatic exterior structural framework allows for fewer interior support structures, and opens up the homes to optimize space. The building's expression is geometrically derived and simple in execution.

The raven black concrete framework complements the weathered Corten steel panels and graphite-coloured window frames and railings. From the interior, these components frame city, water, and mountain views.



***"The Jervis has an additional dimension of uncompromising simplicity, strength and clarity."***

*Tom Staniszki - NSDA Architects*

Register now to stay informed about The Jervis

Register

This is not an offering for sale as such an offer can only be made when accompanied by a Disclosure Statement. E.&O.E. Sales and Marketing by Intracorp Realty Ltd.

# Homes



## Design is Fundamental

Interiors at The Jervis are designed to optimize space and privacy. There are just 58 homes, four suites per floor, and every suite is a corner suite. Every decision — from the floorplans to the hinges on the doors— was considered, questioned, and tested with the homeowner in mind. Every aspect of a home at the Jervis embodies the ideal: ceilings are over-height; windows are positioned to maximize natural light and air circulation; proportions and pathways make sense.

## Explore The Homes At The Jervis

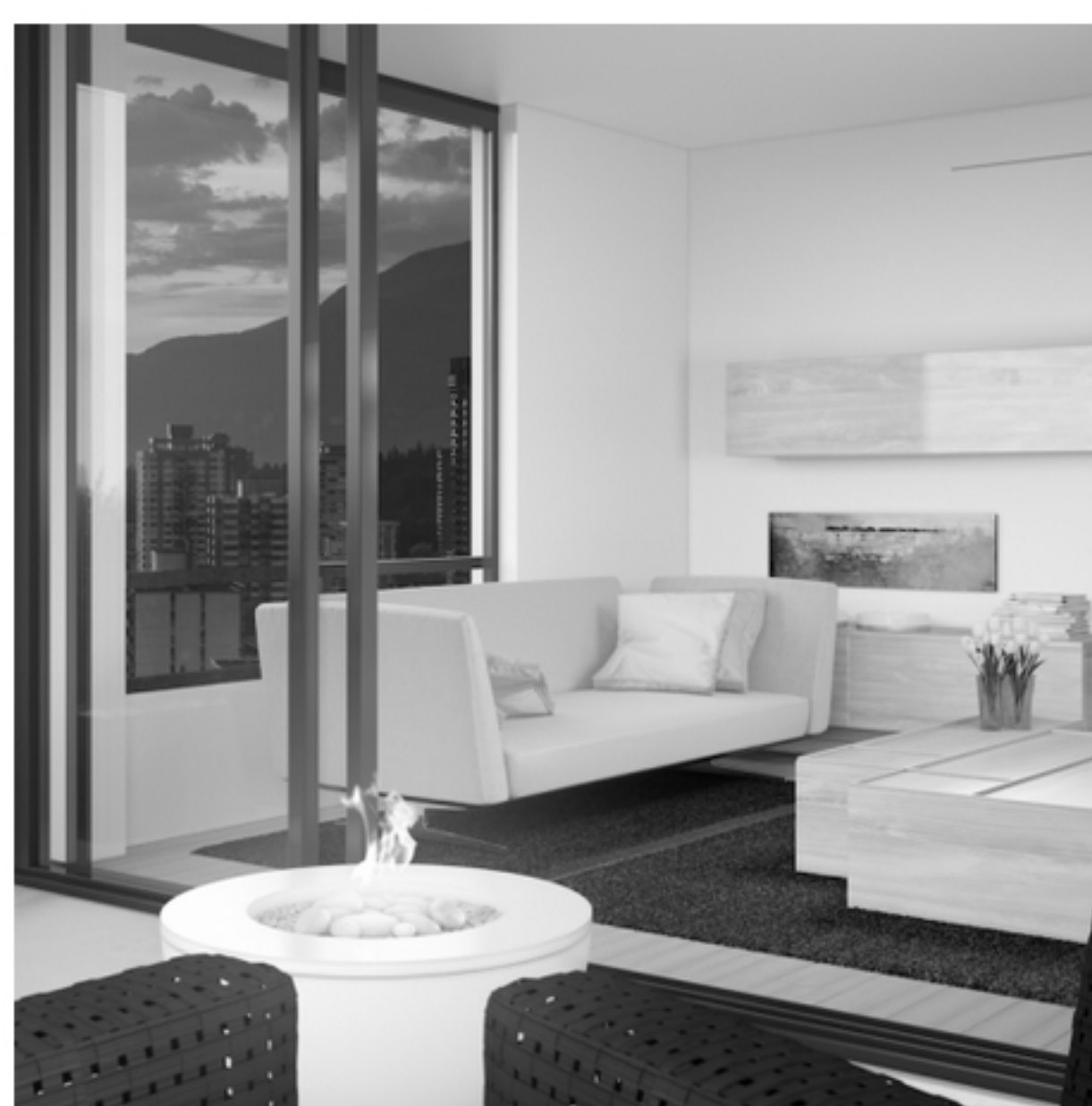
For information on levels 17, 18 and Penthouse Homes please [contact us](#)



[Download Floorplans](#)

***“The most important thing is the aesthetic of how everything is synthesized to work functionally, but still be beautiful and appropriate to the setting.”***

*Scott Trepp, Interior Designer – Trepp Design Inc.*



## Indoor-Outdoor Living

Large covered outdoor areas, all positioned on a corner, adjoin the living areas in a way that redefines the relationship between indoor and outdoor living. The corner design also enhances natural light and air circulation within the home while offering views in multiple directions.

## Living Space

All homes feature two bedrooms and two bathrooms.

Linear kitchens — inspired by Niels and Nancy Bendtsen’s Paris home — integrate high-end Italian cabinetry, self-healing surface finishes, specialty exhaust systems, and the most advanced cooking technology available.

Subtle design touches in bathrooms, from floor to ceiling hand-selected marble tiles to recessed mirrors with analyzed halo lighting, make all the difference to daily life.

Homes are wired for the potential of complete automation of security, temperature, lighting, blinds and sound from the very first day.



**Register now to stay informed about The Jervis**

[Register](#)

This is not an offering for sale as such an offer can only be made when accompanied by a Disclosure Statement. E.&O.E. Sales and Marketing by Intracorp Realty Ltd.

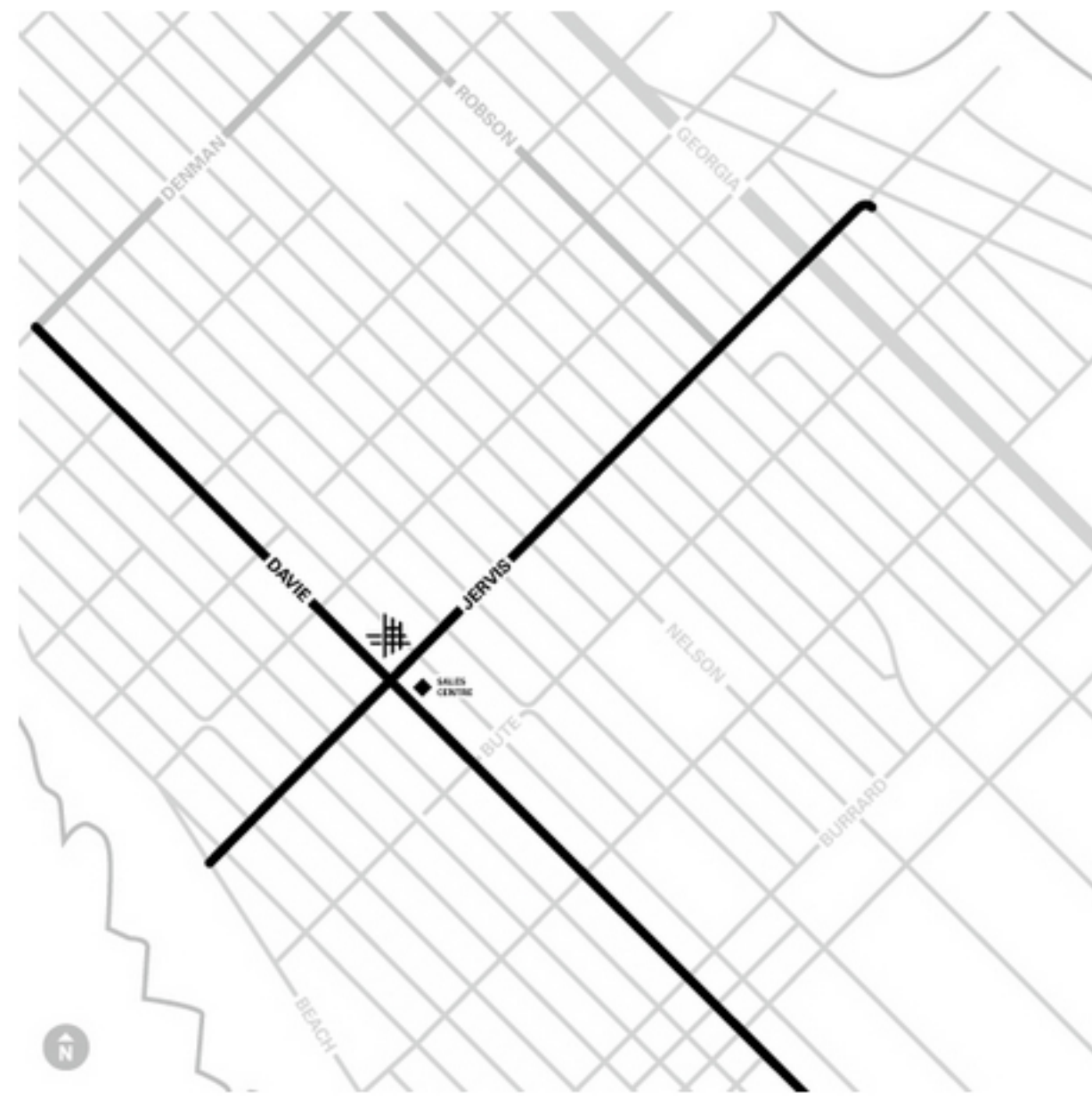
# The West End

## Location is everything

Positioned on a tree-lined street, The Jervis sits on the crest of a hill at the entrance to Davie Village, in one of Vancouver's most welcoming neighbourhoods: the West End.

The West End is a heritage community, bordered by a string of beaches, Stanley Park's 1,000 acres of greenery, and the city's downtown core. It is vibrant, diverse and walkable, and has long been a desirable place to live.

The Jervis occupies a prime spot within this historic area.



**"Our first images, visions and loves of Vancouver were the West End."**

*Nancy Bendtsen, Co-founder - Inform Interiors*

## The Best of Vancouver

The Jervis offers direct access to everything you need and everything Vancouver has to offer.

It is a short walk to the downtown retail shopping district, major performance venues for theatre, music and sports, the Vancouver Art Gallery, as well as numerous restaurants. Local amenities and attractions range from the Aquatic Centre, boating and tennis to farmer's markets, festivals and fireworks; it's all accessible from The Jervis.



## Welcome to the West End

Vancouver's West End is home to historical firsts, one-of-a-kind stories, and one of the most remarkable communities this city has to offer. From trailblazers to movers and shakers, the West End is a place where history is made and the future is formed. Two walking tours highlight the best of the history, architecture, cuisines and culture in the neighbourhood. Indulge your senses and celebrate all the things that make this place so special.

### Walking Tour Maps

[Download Route 1](#)

[Download Route 2](#)



### The Jervis Photographer

## Nelson Mouëllic

Nelson Mouëllic is a commercial lifestyle photographer based in his hometown of Vancouver, BC. His images gained global attention in 2008 when he was awarded the annual World Nomads Travel Photography Scholarship, which sent him to Australia to be mentored by a National Geographic staff photographer.

Now, working primarily as a commercial lifestyle photographer, Nelson's diverse background and experience contribute to his versatility as a photographer. Intracorp commissioned Nelson to do a custom photo study of the West End because of his strong ties to the neighbourhood and unique ability to capture its eccentricities and charm.



**Register now to stay informed about The Jervis**

[Register](#)

This is not an offering for sale as such an offer can only be made when accompanied by a Disclosure Statement. E.&O.E. Sales and Marketing by Intracorp Realty Ltd.





# The Team

Interior Design:

## Trepp Design Inc.

Trepp Design Inc. creates spaces that intimately unite people and their environments. The team creates areas for living and working that are both practical and expressive of individual personality.

The collaborative approach draws on the experience of designers and technologists to produce innovative solutions that merge functionality and aesthetic expression.

Envisioning Architect:

## Richard Henry

Richard Henry has consulted and acted as lead design architect on an impressive range of projects in Vancouver and the Lower Mainland, always taking special care to consider the impact on the local community.

Richard believes that there is such a thing as fundamental beauty that transcends both style and fashion and that all people recognize. Whatever project he works on, he searches for this unique quality in order to bring it to the forefront.

Architecture:

## NSDA Architects

Established in 1976, NSDA is founded on principles of personalized service, a teamwork approach, and a commitment to quality.

A six-time recipient of the Lieutenant Governor's Award, NSDA prides itself on the diversity of its portfolio. It is this diversity — in scope, complexity and budget — that allows the firm to grow both professionally and creatively.

Landscaping:

## Durante Kreuk

Durante Kreuk is an award-winning landscape architectural firm with over thirty years experience in design and development.

Practicality, broad perspective, and diverse thinking help Durante Kreuk to create a wide range of sustainable, people-focused urban places. The firm's commitment to collaboration allows them the freedom to push boundaries and explore new ideas.

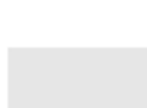
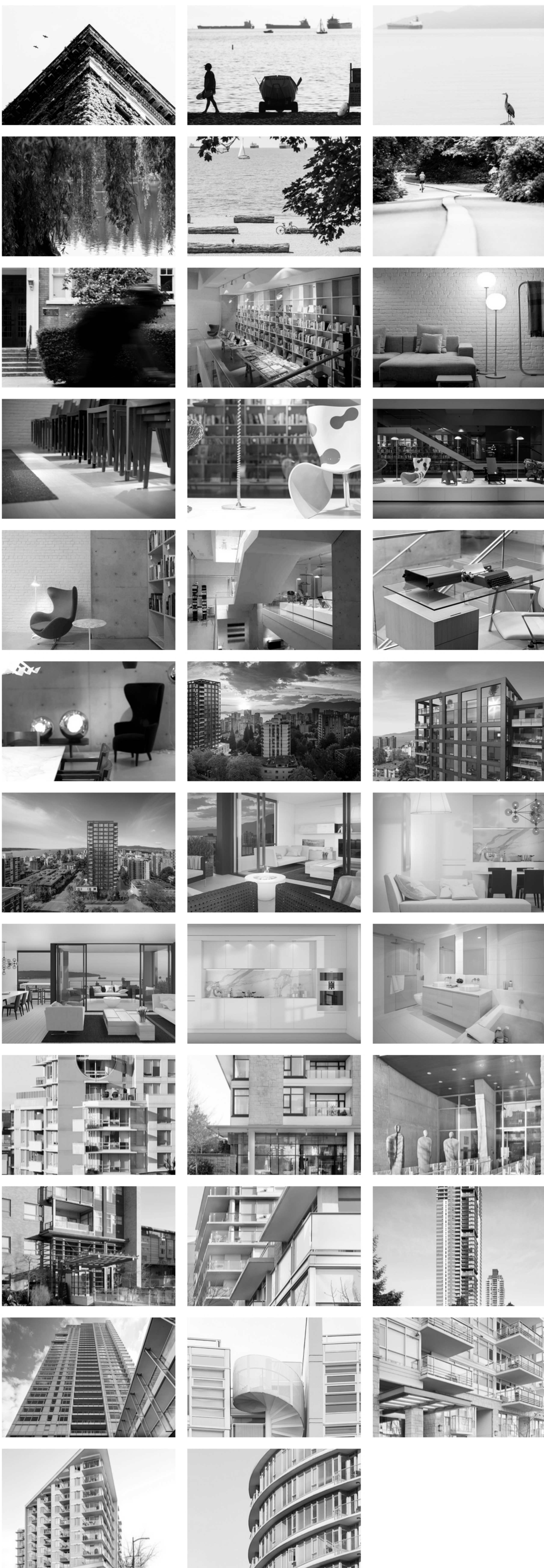
Register now to stay informed about The Jervis

Register

This is not an offering for sale as such an offer can only be made when accompanied by a Disclosure Statement. E.&O.E. Sales and Marketing by Intracorp Realty Ltd.

# The Gallery

All Neighbourhood Exteriors Interiors Intracorp Portfolio Inform Portfolio

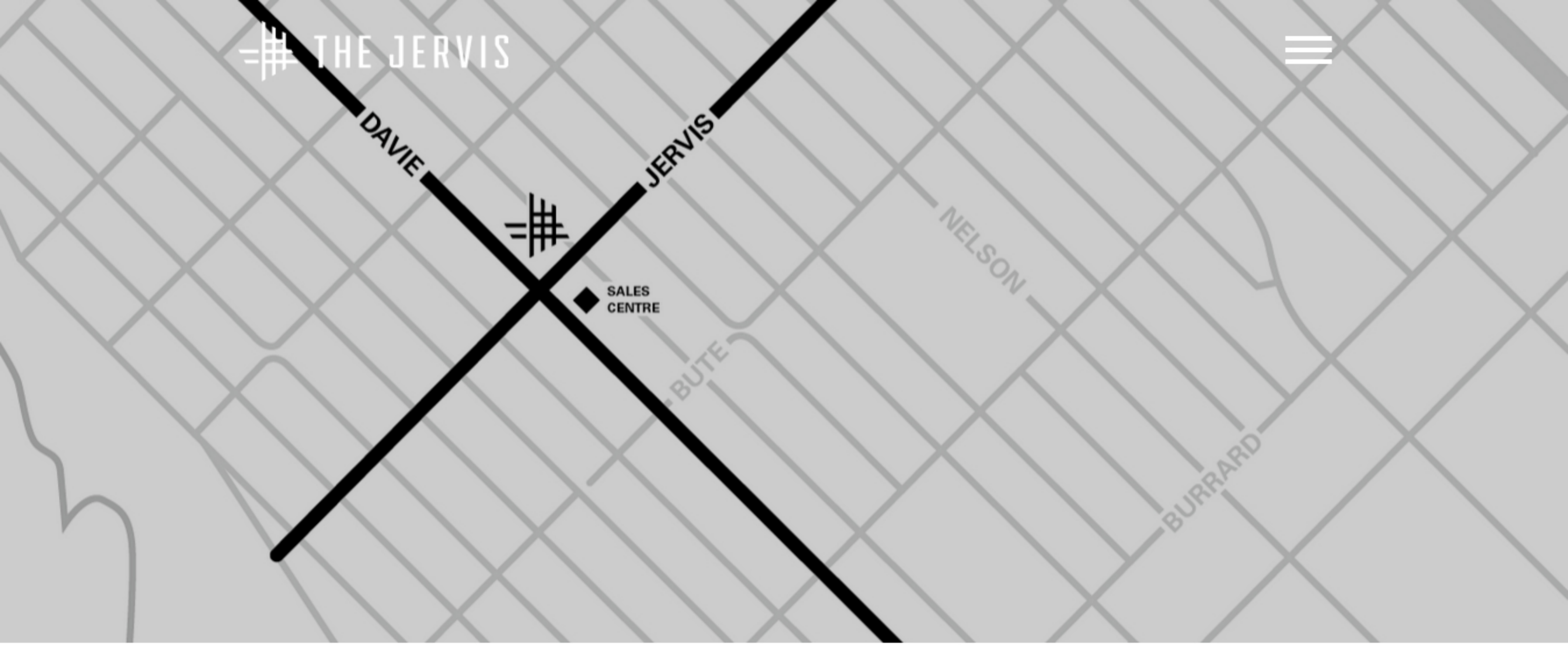


Register now to stay informed about The Jervis

Register

This is not an offering for sale as such an offer can only be made when accompanied by a Disclosure Statement. E.&O.E. Sales and Marketing by Intracorp Realty Ltd.





## Contact Us

Sales Centre:  
By Appointment Only  
P: 604-998-8989  
E: info@thejervis.com



Your Name (required)

Your Email (required)

Subject

Your Message

SEND



This is not an offering for sale as such an offer can only be made when accompanied by a Disclosure Statement.  
E.&O.E. Sales and Marketing by Intracorp Realty Ltd.

