

# FEATURES

## VIBRANT CITY LIVING ENVISIONED BY AMACON

---

### RESIDENCES

828 Cambie Street, Vancouver. 187 homes over 30 floors, including:

- One, two, and three bedroom condos
- Exclusive two-level penthouse homes with rooftop patios

### HOTEL-CALIBER LIVING

Living at Block feels like life in a refined hotel, with a remarkable lobby and stunning social spaces.

- **Make an entrance:** Hotel-style lobby just for residents, with concierge and mail room
- **Space for wellness:** Fitness centre, exclusive to residents
- **Social lounge:** Amenity space with full kitchen, patio, and balcony with city views

### DESIGN WITH VISION

Block's design blends the best of old and new. The residential building incorporates a heritage brick façade, formerly the Northern Electric Building. Its modern interior design creates a striking contrast against the classic brick.

- **Developer & contractor:** Proudly developed by Amacon, one of Canada's most influential real estate development and construction firms and a trusted builder with over 50 years of experience.
- **Architecture:** Designed by GBL Architects, a cohesive and progressive Vancouver-based firm
- **Interior design:** Designed by CHIL Interior Design, a boutique design studio leveraging global resources to make spaces come alive

### SECURITY & WARRANTY

- Concierge to welcome you and your guests
- Secure private storage locker
- Every parking stall is EV-ready
- Comprehensive Travelers 2/5/10 year home warranty protection
- Hard-wired smoke detector and carbon monoxide monitors in all homes
- Professional property management by Rancho Management

The developer reserves the right to make changes and modifications to the information contained herein. Features and finishes are subject to change without notice.

The developer may also make such further development modifications as are permitted by the disclosure statement, as may be amended, the contract of purchase and sale between a purchaser and developer (if applicable), or otherwise. Please contact a developer sales representative for details. E. & O

# FINISHES

## INTERIORS WITH TIMELESS APPEAL

---

### HOME INTERIORS

Defined by elevated finishes and carefully considered details that maximize usability, so your home is as practical as it is attractive.

- **Chic colour palettes:** Choose from two sophisticated colour schemes
- **Hardwood floors:** Brushed oak hardwood floors throughout
- **Amacon Closet:** Master bedroom closets designed to maximize your storage space, with closet organizers and shelving included
- **Minimalist window coverings:** Sleek roller shades on all the home's expansive windows
- **Laundry closet:** LG front load washer and dryer help save energy

### KITCHENS

Cook, eat, drink, and welcome loved ones in style.

- Eye-catching two-tone kitchen cabinetry
- Polished quartz countertops and backsplash
- Stainless steel undermount sink with black pull-down, dual spray faucet
- Sleek Fulgor and Miele kitchen appliance package with black stainless steel accents
  - Integrated refrigerator with bottom drawer freezer — Fulgor Milano Energy Star
    - 24" in 1 bedroom homes
    - 30" in 2 and 3 bedroom homes
  - Cooktop and oven — Miele, 24"
  - Integrated dishwasher — Fulgor, 24"

### BATHROOMS

The heart of the hotel experience and your personal place for wellness

- Brushed nickel Kohler accessories
- Porcelain tile surrounds in baths and showers
- Chic Kohler shower head with 48 nozzle spray face and Katalyst® Air-Induction Technology
- Dual-flush, high-efficiency Kohler toilet with Reach Quiet-Close™ seat
- Deep, soaker-style bathtub

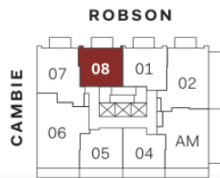
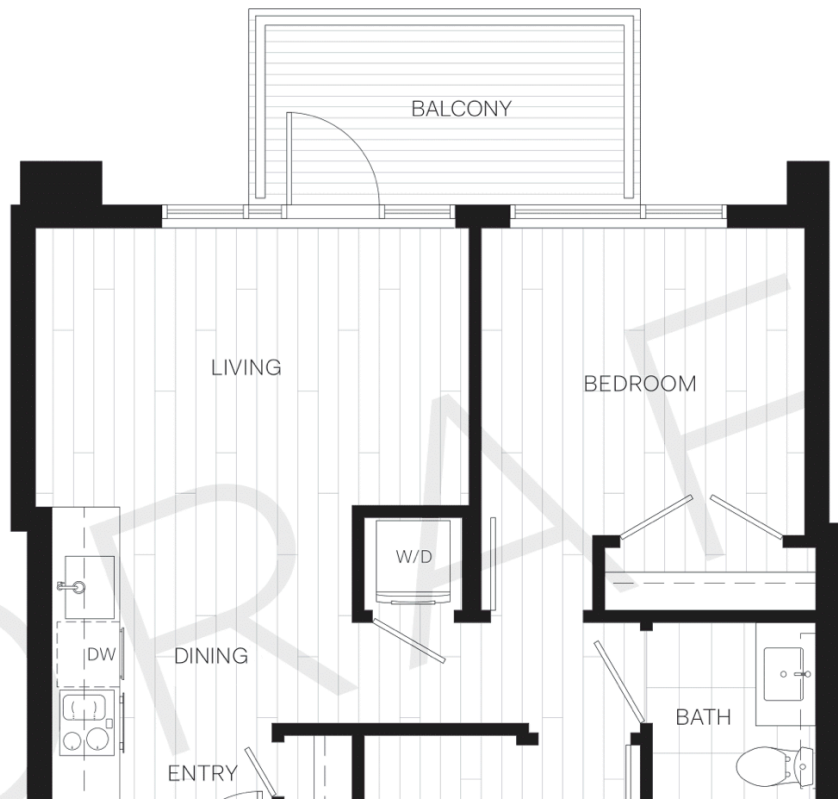
The developer reserves the right to make changes and modifications to the information contained herein. Features and finishes are subject to change without notice.

The developer may also make such further development modifications as are permitted by the disclosure statement, as may be amended, the contract of purchase and sale between a purchaser and developer (if applicable), or otherwise. Please contact a developer sales representative for details. E. & O

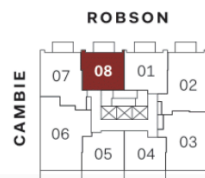
# PLAN 1C

1 BEDROOM + DEN

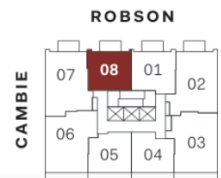
INTERIOR: 521 SF



N LEVEL 6



LEVELS 7 - 19

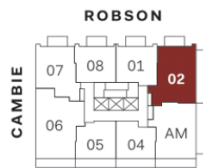
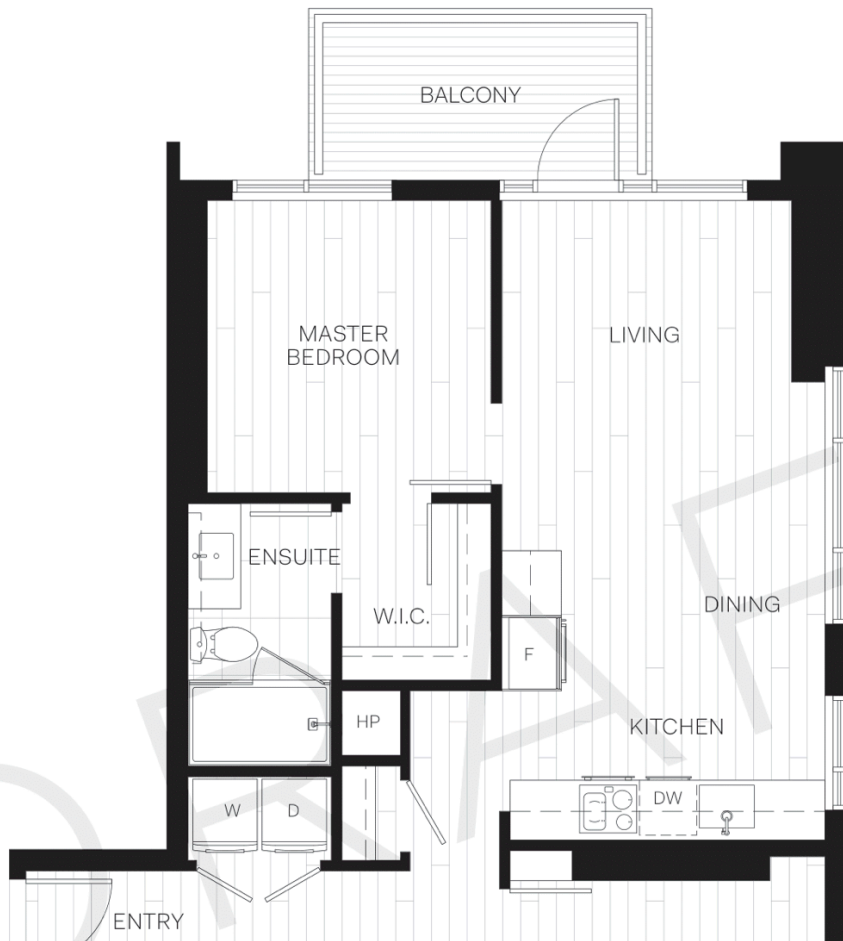


LEVELS 20 - 27

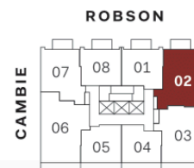
# PLAN 2B

2 BEDROOM + DEN

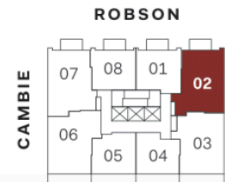
INTERIOR: 855 SF



N LEVEL 6



LEVELS 7 - 19

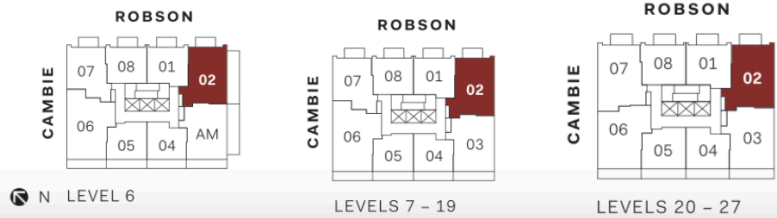
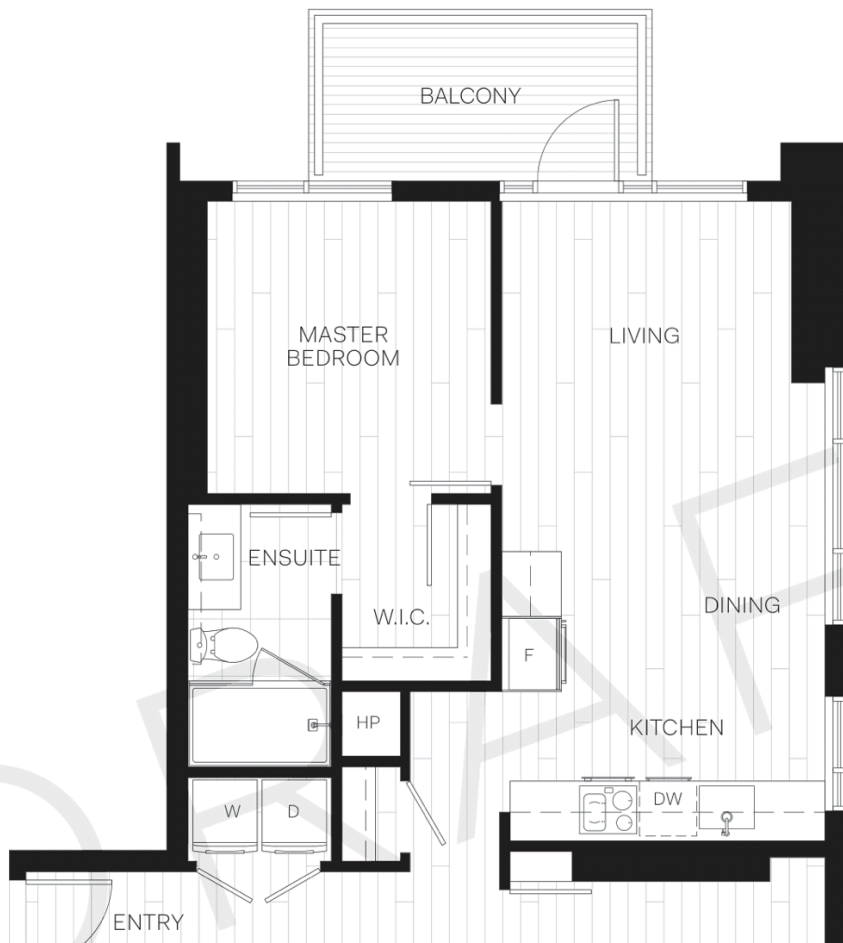


LEVELS 20 - 27

# PLAN 2B

2 BEDROOM + DEN

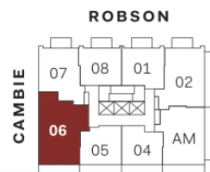
INTERIOR: 855 SF



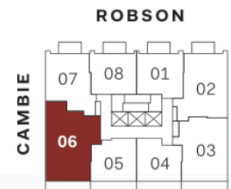
# PLAN 3A

3 BEDROOM + DEN

INTERIOR: 1,016 SF



N LEVEL 6



LEVELS 7 - 19