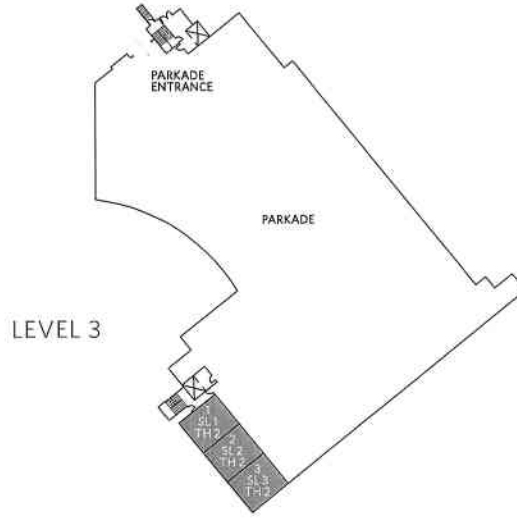
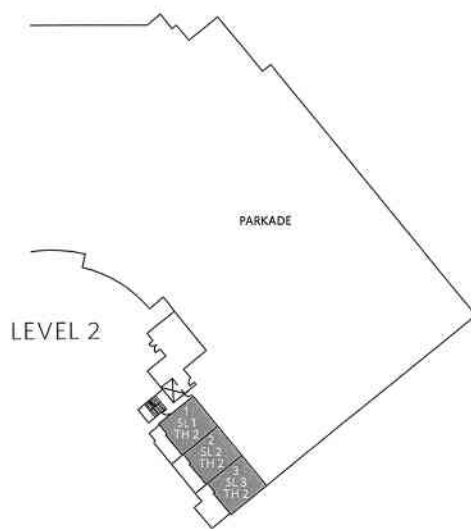
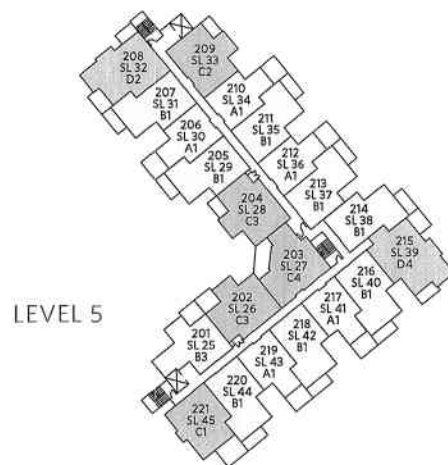
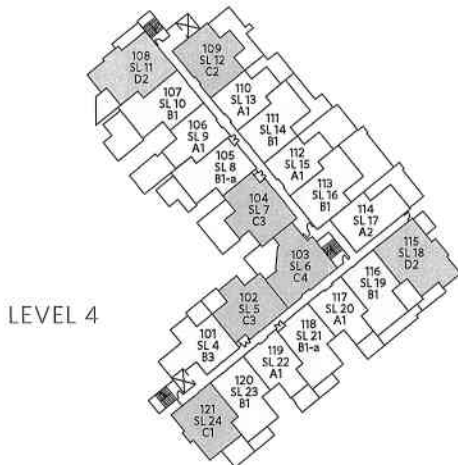
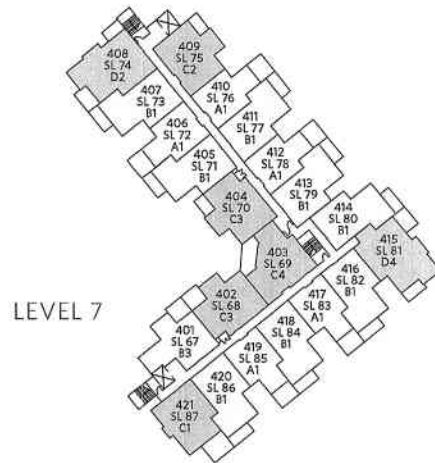
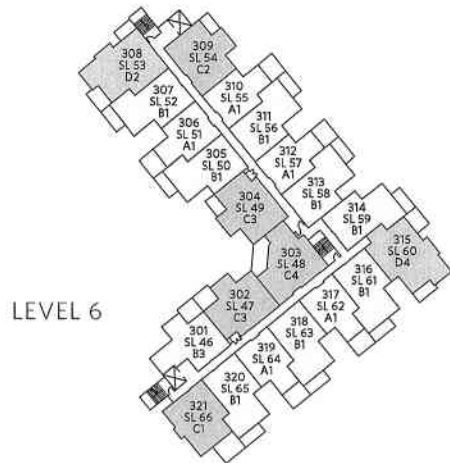


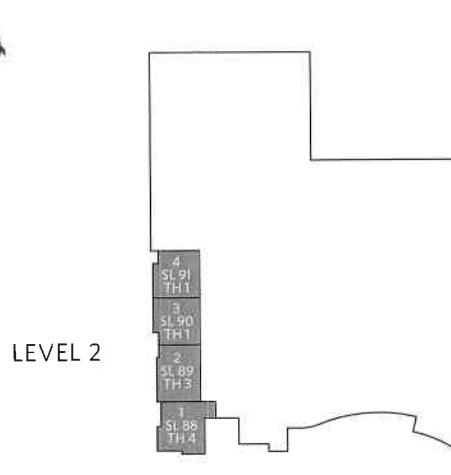
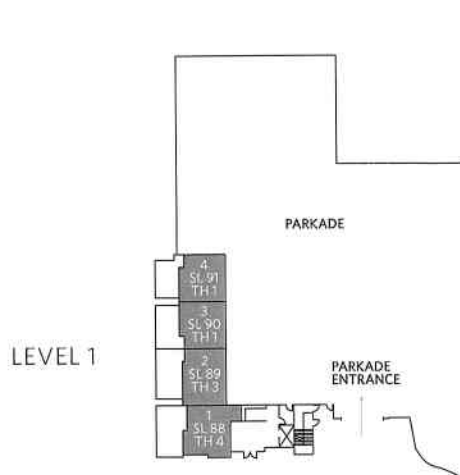
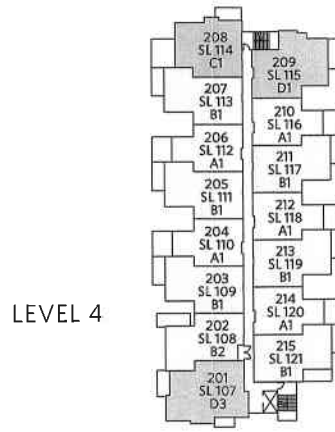
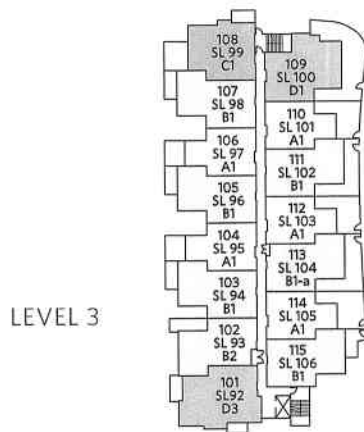
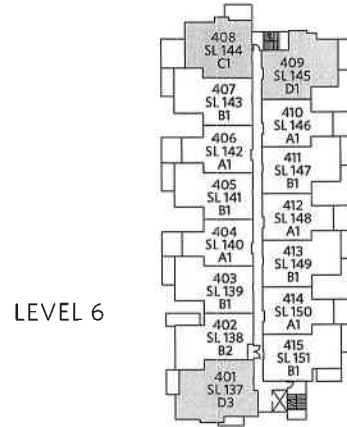
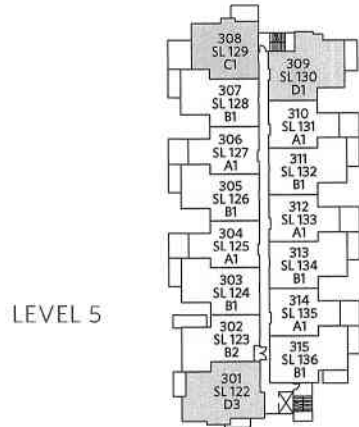
# SITEPLAN

LOW-RISE RESIDENCES - BUILDING 1



# SITEPLAN

LOW-RISE RESIDENCES - BUILDING 2



# A1

1 Bedroom & Den, 1 Bathroom, Approx. 635 sq. ft.

LOW-RISE RESIDENCE



BUILDING UNITS 106-112

BALCONY  
ALL GROUND FLOOR UNITS HAVE PATIO  
(SHAPE VARY IN SHAPE AND SIZE)  
(SEE KEY PLAN)

LIVING

DINING

MASTER  
BEDROOM

WALK-IN  
CLOSET

BATH

ENTRY

KITCHEN

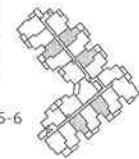
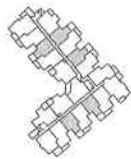
DEN

LEVEL 7

LEVELS 5-6

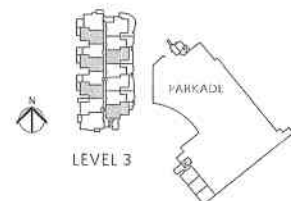
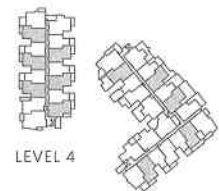
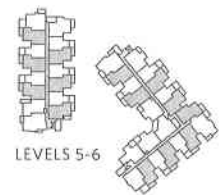
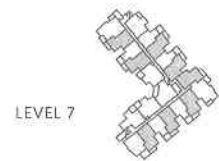
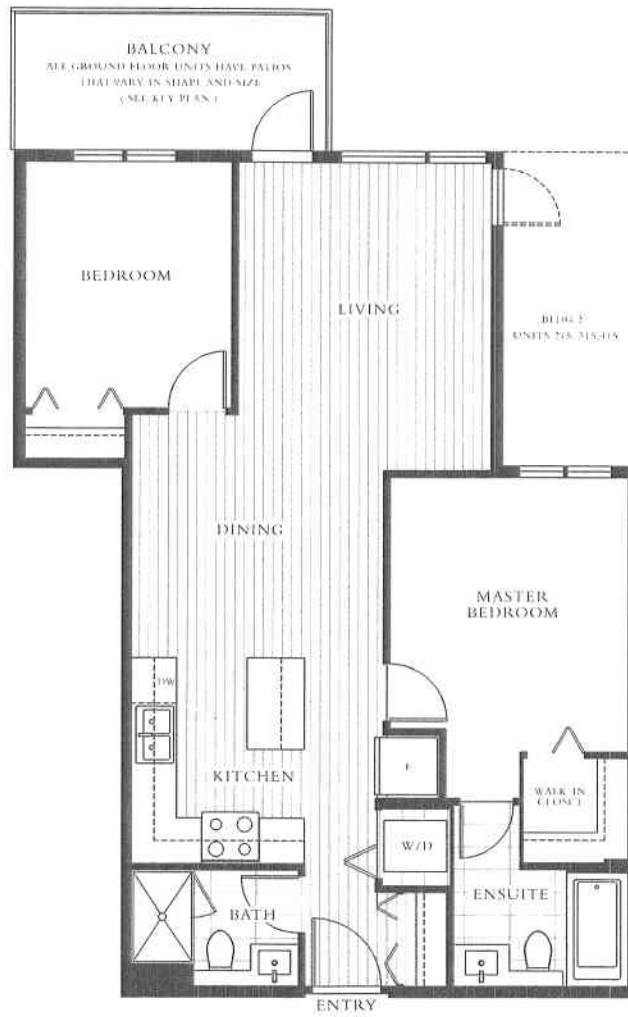
LEVEL 4

LEVEL 3



# B<sub>1</sub>

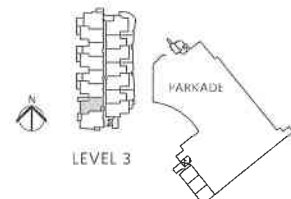
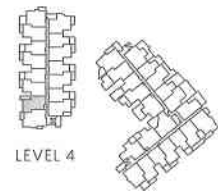
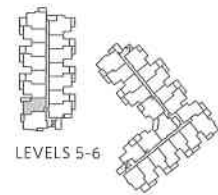
2 Bedroom, 2 Bathroom, Approx. 800 - 823 sq. ft.  
LOW-RISE RESIDENCE



# B<sub>2</sub>

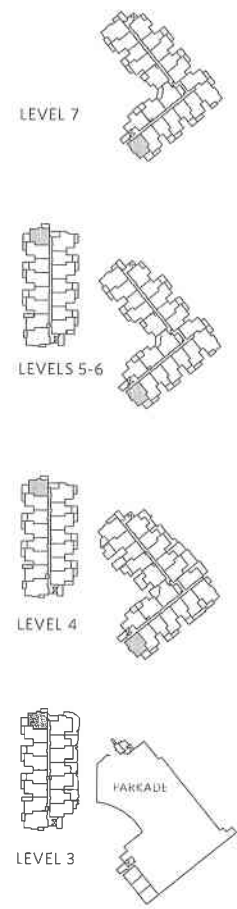
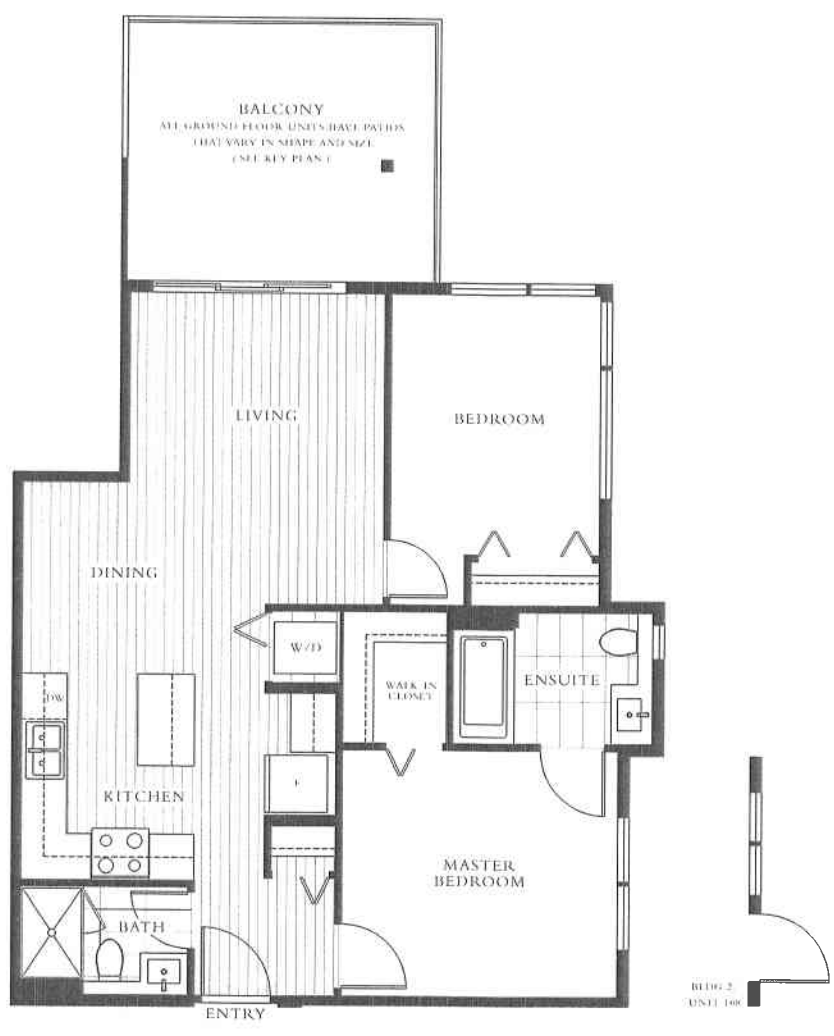
2 Bedroom, 2 Bathroom, Approx. 789 sq. ft.

LOW-RISE RESIDENCE



C1

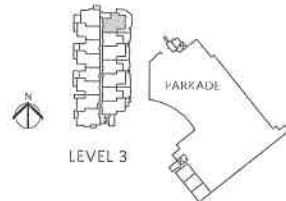
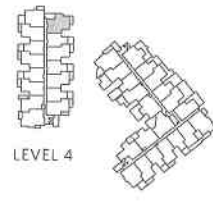
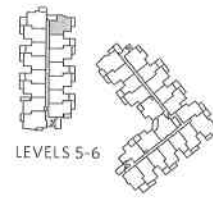
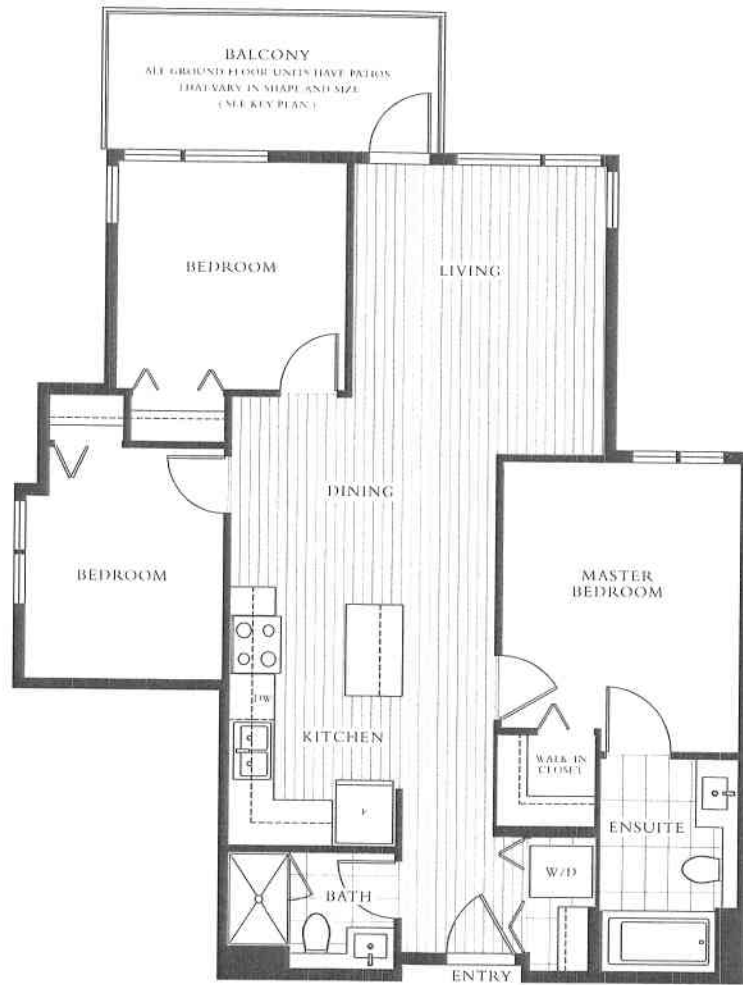
2 Bedroom , 2 Bathroom , Approx. 811 sq. ft.  
(adaptable)  
LOW-RISE RESIDENCE



In a continuing effort to meet the challenge of product improvements, we reserve the right to modify or change dimensions, sizes, specifications, layouts and materials without notice. Deck and patio sizes, railings and guardrail details may vary depending upon floor level. The quality frames at Escala are built by IM Escala Homes P.O. E. 3.01.

# D1

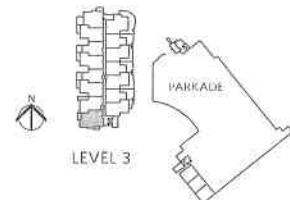
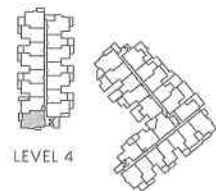
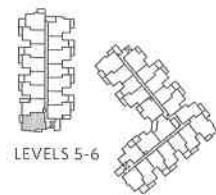
3 Bedroom, 2 Bathroom, Approx. 920 sq. ft.  
LOW-RISE RESIDENCE



In a continuing effort to meet the challenge of product improvements, we reserve the right to modify or change dimensions, sizes, specifications, layouts and materials without notice. Deck and patio sizes, columns and guardrail details may vary depending upon floor level. The quality homes at Corals are built by METRAH HOMES LTD. & C.O.

# D3

3 Bedroom, 2 Bathroom, Approx. 978 sq. ft.  
LOW-RISE RESIDENCE

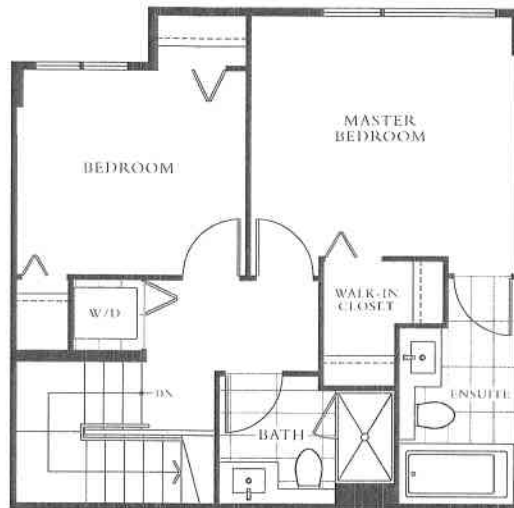




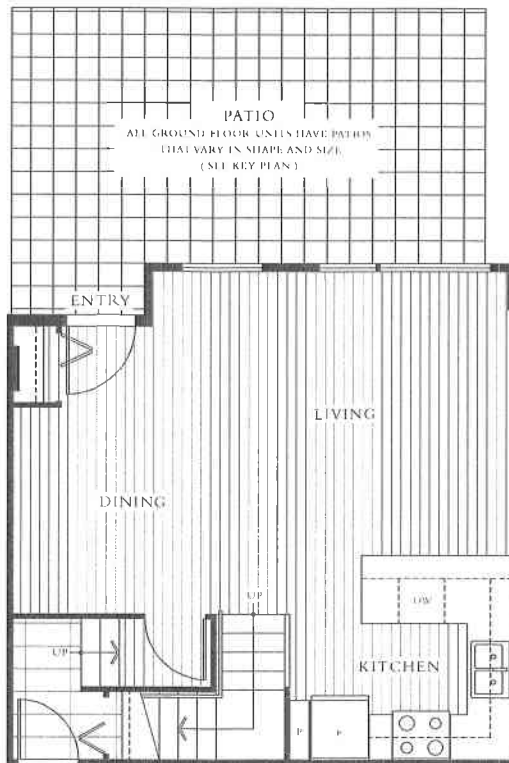
# TOWNHOME 1

2 Bedroom, 2 Bathroom, Approx. 977-990 sq. ft.  
LOW-RISE RESIDENCE

UPPER



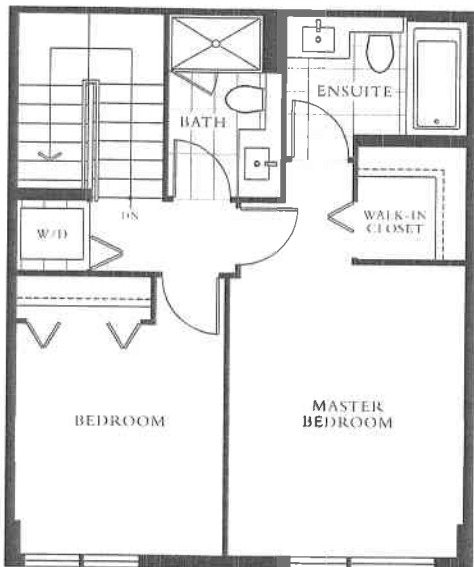
MAIN



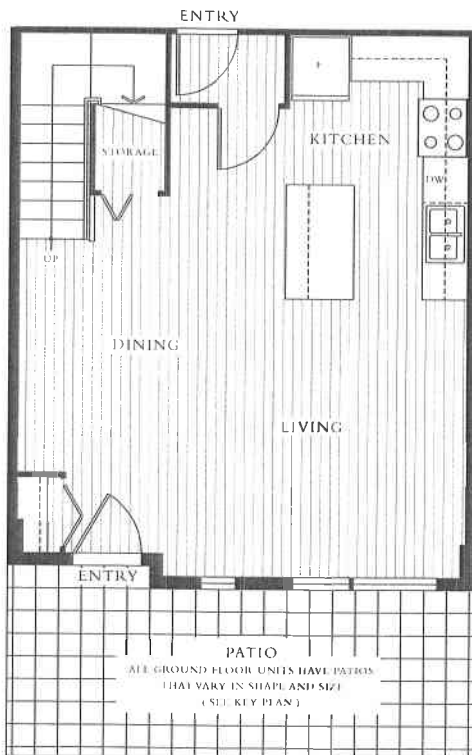
# TOWNHOME 2

2 Bedroom, 2 Bathroom, Approx. 998-1,032 sq. ft.  
LOW-RISE RESIDENCE

UPPER



MAIN

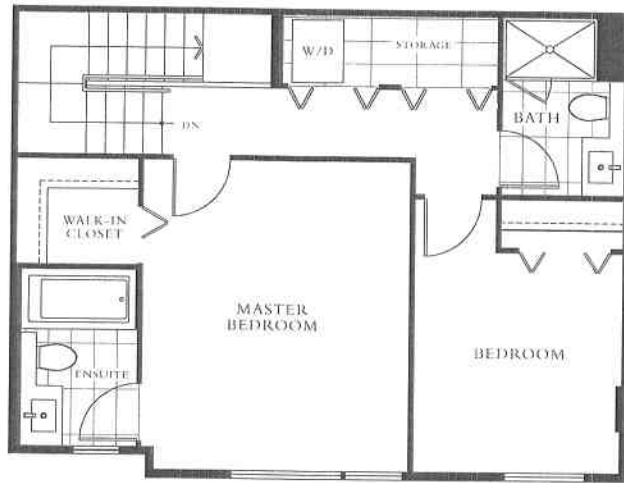


In a continuing effort to meet the challenge of product improvements, we reserve the right to modify or change dimensions, sizes, specifications, layouts and materials without notice. Text and plate sizes, columns and quadra detail may vary depending upon final level. The quality lives at Exalts are built by M Exalts Homes (P. F. S. O.E.).

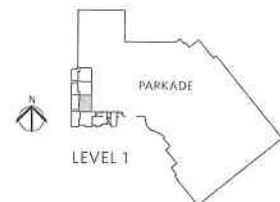
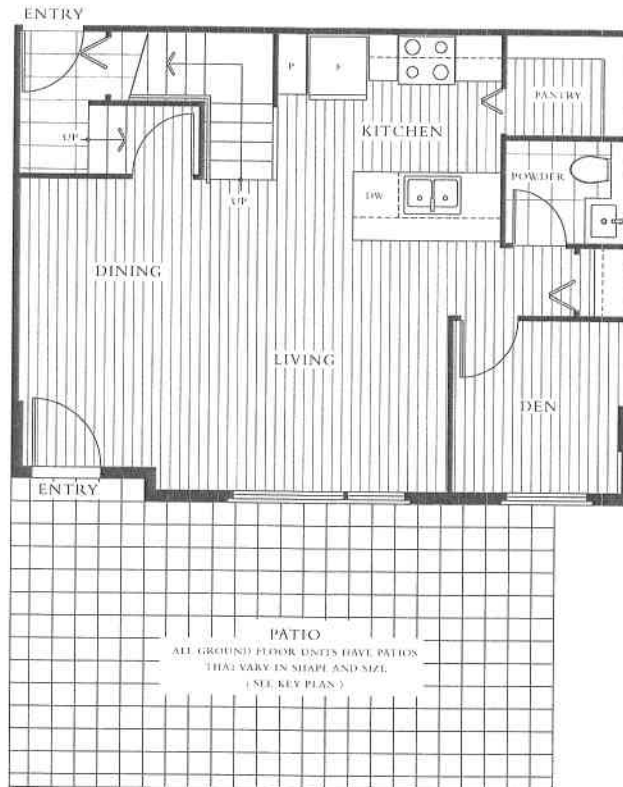
# TOWNHOME 3

2 Bedroom & Den, 2.5 Bathroom, Approx. 1,124 sq. ft.  
**LOW-RISE RESIDENCE**

UPPER



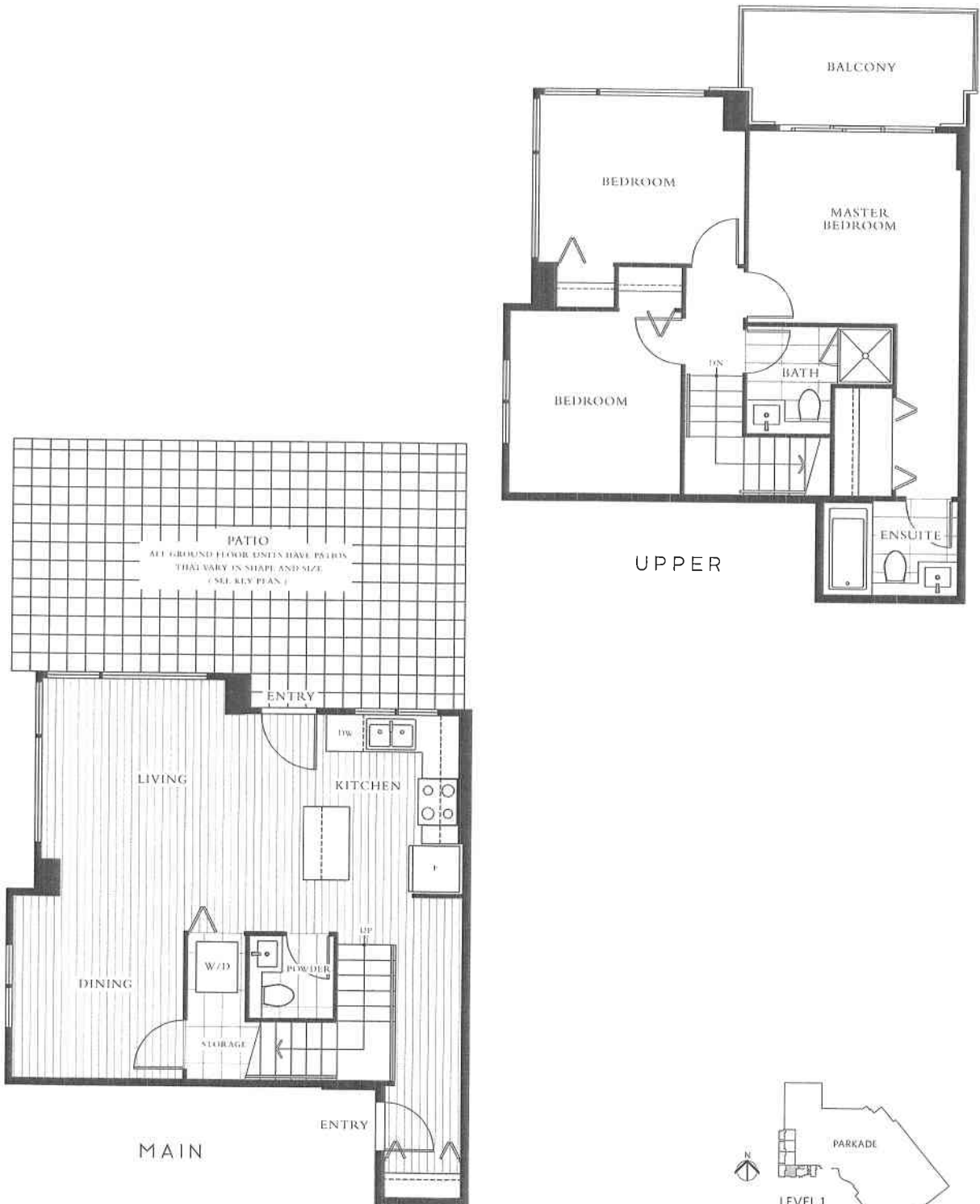
MAIN



In a continuing effort to meet the challenge of product improvements, we reserve the right to modify or change dimensions, sizes, specifications, layouts and materials without notice. Deck and patio sizes, colors and structural details may vary depending upon floor level. The quality finishes at Franks Homes (P.F.) S.O.F.

# TOWNHOME 4

3 Bedroom, 2.5 Bathroom, Approx. 1,154 sq. ft.  
LOW-RISE RESIDENCE



In a continuing effort to meet the challenge of product improvements, we reserve the right to modify or change dimensions, sizes, specifications, layouts and materials without notice. Door and gate sizes, columns and guardrail details may vary depending upon floor level. The quality homes at Escala are built by MFC Real Homes P.L.C. & C.E.