

# TOWN OF PRINCETON

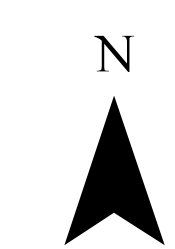
## Zoning Bylaw Schedule A

### Zoning Map

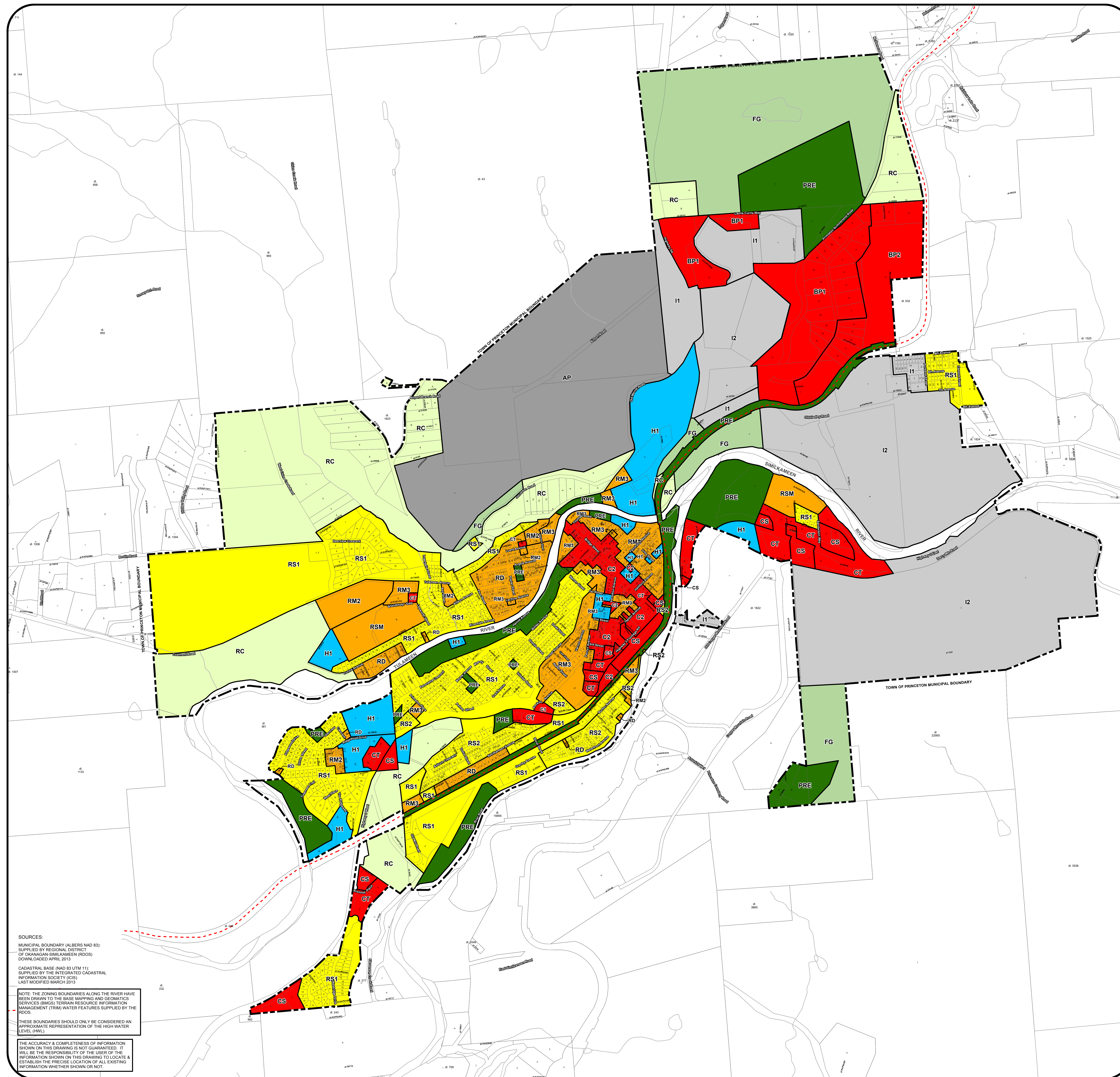
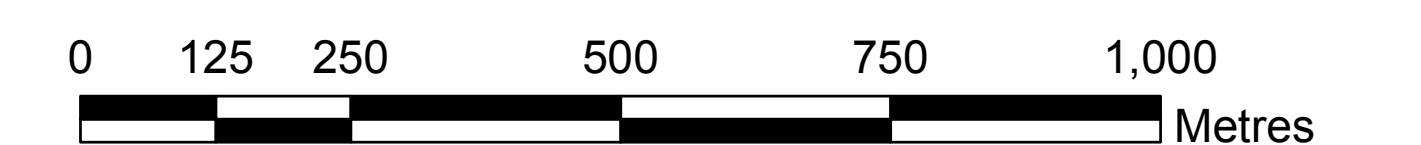
#### Legend

- |                        |     |   |
|------------------------|-----|---|
| --- Trans Canada Trail | I1  | Light Industrial                          |
| AP                     | I2  | Heavy Industrial                          |
| BP1                    | PRE | Parks, Recreation & Exhibition            |
| BP2                    | RC  | Country Residential                       |
| C1                     | RD  | Two-Family Residential                    |
| C2                     | RM2 | Multi-Family Residential (Low Density)    |
| C3                     | RM3 | Multi-Family Residential (Medium Density) |
| CS                     | RSM | Manufactured Home Park                    |
| CT                     | RS1 | Single-Family Residential                 |
| FG                     | RS2 | Single-Family Residential (Small Parcels) |
| H1                     |     |   |

This is Schedule A, the Zoning Map referenced in the Town of Princeton Zoning Bylaw No. 880, 2013



1:7,000



**SOURCES**  
 MUNICIPAL BOUNDARY (ALBERS NAD 83):  
 SUPPLIED BY REGIONAL DISTRICT  
 OF OKANAGAN-SIMILKAMEEN (RDOS)  
 DOWNLOADED APRIL 2013  
 CADASTRAL BASE (NAD 83 UTM 11):  
 SUPPLIED BY THE INTEGRATED CADASTRAL  
 INFORMATION SOCIETY (ICIS)  
 LAST MODIFIED MARCH 2013

**NOTE:** THE ZONING BOUNDARIES ALONG THE RIVER HAVE  
 BEEN DRAWN TO THE BASE MAPPING AND GEOMATICS  
 SERVICES (BMS) TERRAIN RESOURCE INFORMATION  
 MANAGEMENT (TRIM) WATER FEATURES SUPPLIED BY THE  
 RDOS  
 THESE BOUNDARIES SHOULD ONLY BE CONSIDERED AN  
 APPROXIMATE REPRESENTATION OF THE HIGH WATER  
 LEVEL (HWL)

**THE ACCURACY & COMPLETENESS OF INFORMATION  
 SHOWN ON THIS DRAWING IS NOT GUARANTEED. IT  
 WILL BE THE RESPONSIBILITY OF THE USER OF THE  
 INFORMATION SHOWN ON THIS DRAWING TO LOCATE &  
 ESTABLISH THE PRECISE LOCATION OF ALL EXISTING  
 INFORMATION WHETHER SHOWN OR NOT.**