

HENSLEY

BY CRESSEY

BRIGHT.
BOLD.
BRILLIANT.

Advance Preview Package



Presented by Cressey, Hensley is a vision of light and air on the skyline of Metro Vancouver's new urban heart – West Coquitlam.

This statement tower is anchored by five distinct columns which escalate thirty-three storeys to culminate in an unprecedented glass-enclosed penthouse amenity space spanning three storeys into the sky.



HENSLEY KNOWS SPECTACULAR WIDE-OPEN VIEWS



HENSLEY KNOWS SOOTHING
FIRST-CLASS AMENITIES

HENSLEY KNOWS SUPERIOR
ACCESS TO METRO
VANCOUVER



HENSLEY FLOOR PLANS

SELECT YOUR HOME

TYPICALS

SKYHOMES

TOWNHOMES

PLAN

PLAN A

PLAN A1

PLAN B

PLAN B1

PLAN C

PLAN C1

PLAN C2

PLAN C3

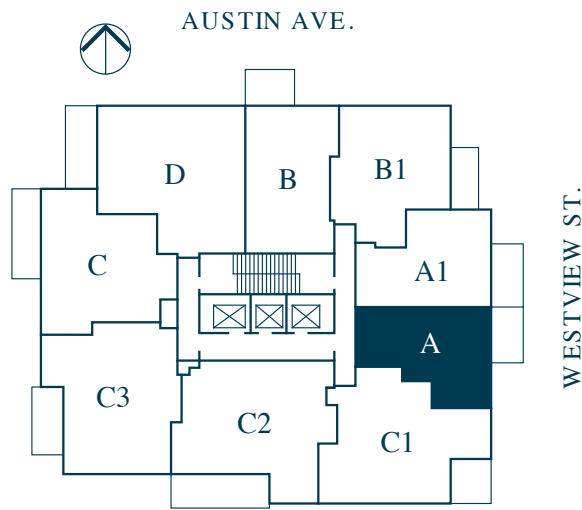
PLAN
TYPICAL
A

HOME SCHEME

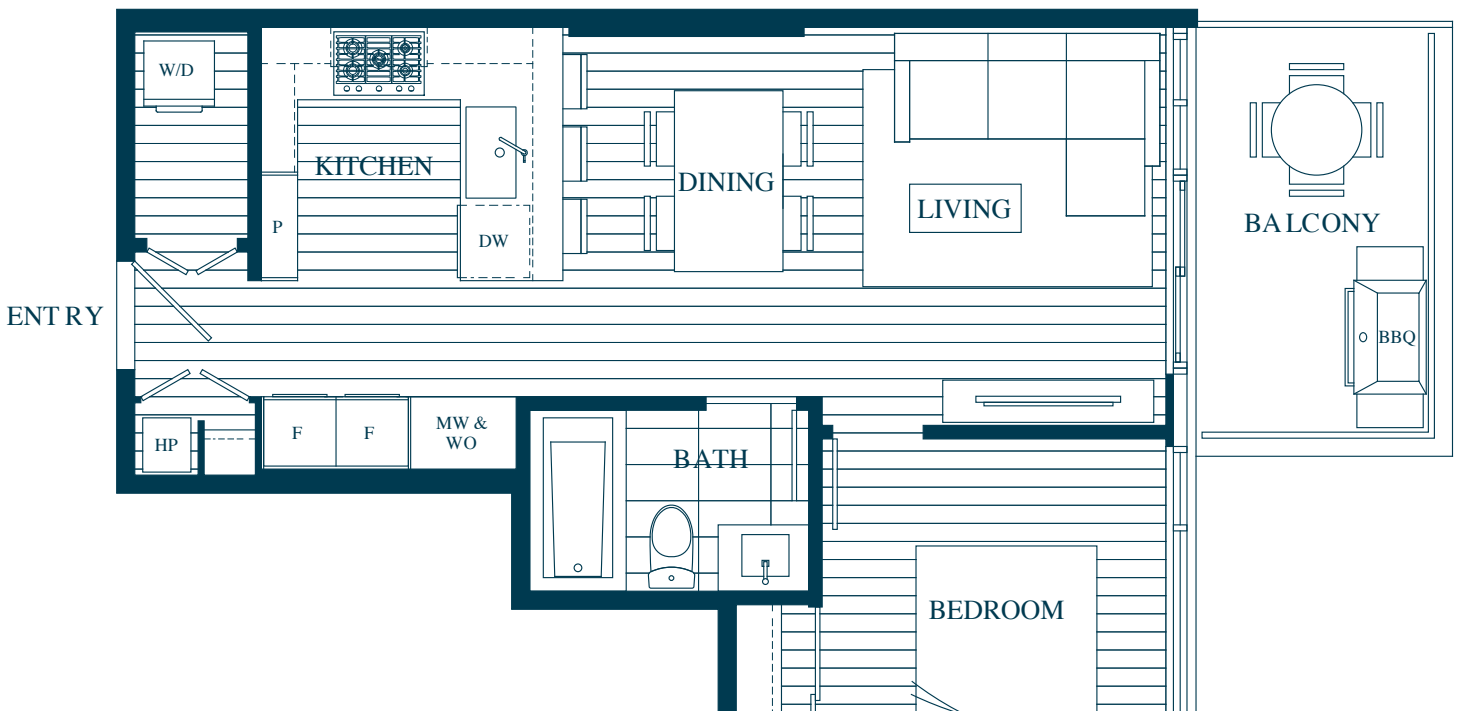
1 BEDROOM
1 BATH

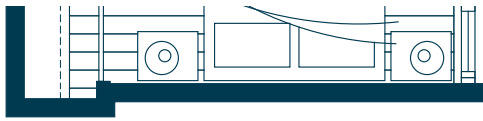
INTERIOR
530 SQ. FT.

EXTERIOR
84 SQ. FT.



LEVELS 3 - 23 AND 28 - 32





[DOWNLOAD FLOOR PLAN](#) ▼



CAPTIVATING INTERIORS

- Sophisticated, well-designed West Coquitlam residences built by the respected Cressey Development Group, with interior design by prominent Insight Design Group
- Concrete construction leads to pleasantly quiet living
- Efficient, forced-air heating and cooling
- Over-height, smooth painted ceilings
- Wood laminate flooring throughout
- Select from two unique design concepts – HOME and HOTEL
- Select from two colour palettes – Walnut or Driftwood
- Front-loading, energy efficient Blomberg washer and dryer
- Surrounding views from your spacious outdoor living space
- Solid core doors for every room and closet

THE CRESSEY KITCHEN™

- The CresseyKitchen™ is renowned for its functional walk-through layout, ample storage space and seamless design
- 48” of integrated, energy efficient refrigeration by Blomberg, with bottom freezer
- The choice of two 24” refrigerators or one 24” refrigerator and an upgraded 24” slide-out pantry system
- 30” 5-burner Jenn-Air gas cooktop with stainless steel design
- Integrated hood fan inserted seamlessly into custom cabinetry
- 30” Jenn-Air wall oven
- Panasonic stainless steel microwave with trim kit
- Fully-integrated, energy and water efficient Blomberg dishwasher
- Durable and easy-to-clean quartz countertops with dramatic marble-style porcelain slab backsplash
- Under-cabinet lighting illuminates work surfaces
- Single square-bowl, premium 16-gauge stainless steel, under-mount kitchen sink

ELEGANT BATHROOMS

- Complementing marble countertop and backsplash in master ensuite
- Quartz countertop and full-height porcelain wall tile behind vanity in main bathroom
- Frameless, glass-enclosed, tiled stand-up shower in master ensuite
- Option to choose tub versus shower, or shower versus tub, in bathrooms
- Tiled niches in main bathroom and master ensuite to keep frequently used items at hand
- Medicine cabinet in master ensuite
- Porcelain floor tile in all bathrooms
- Under-vanity lighting in all bathrooms
- Frameless, glass-enclosed, tiled stand-up showers in all bathrooms
- Wood-grained laminate or painted cabinetry with decorative pulls
- Contemporary undermount or vessel sinks with polished chrome faucets

COLLECTIVE AMENITIES

- State-of-the-art fitness facility, including an outdoor pool, covered outdoor hot tub, steam and sauna, cabanas, outdoor BBQ areas and outdoor fire pit
- Triple-height penthouse amenity space, featuring an indoor zen garden, entertainment room, kitchen and party room, games room, and outdoor lounge
- Concierge service



HENSLEY DEFINES PREMIUM WEST COAST LIFESTYLE

REGISTER NOW

HensleyByCressey.com



Sales and Marketing by MLA Canada This is not an offering for sale. Any such offering may only be made with a Disclosure Statement E.&O.E