

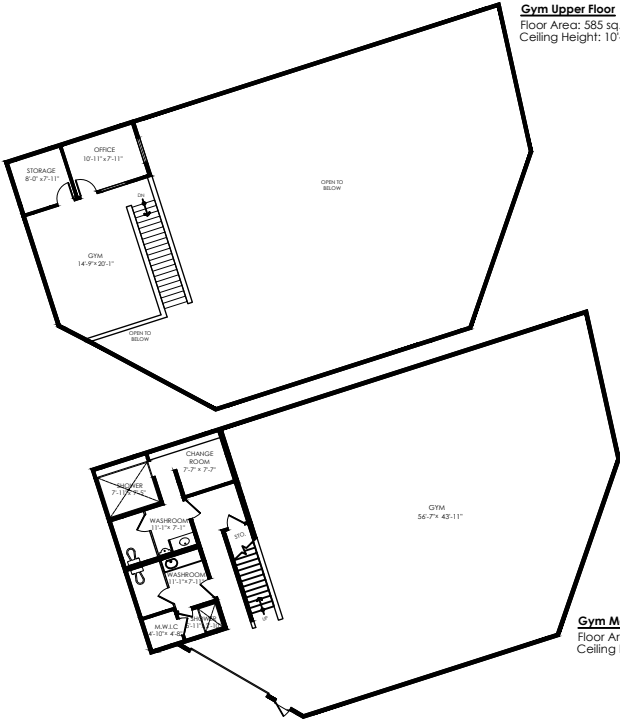


# 31581 S Fraser Way, Abbotsford

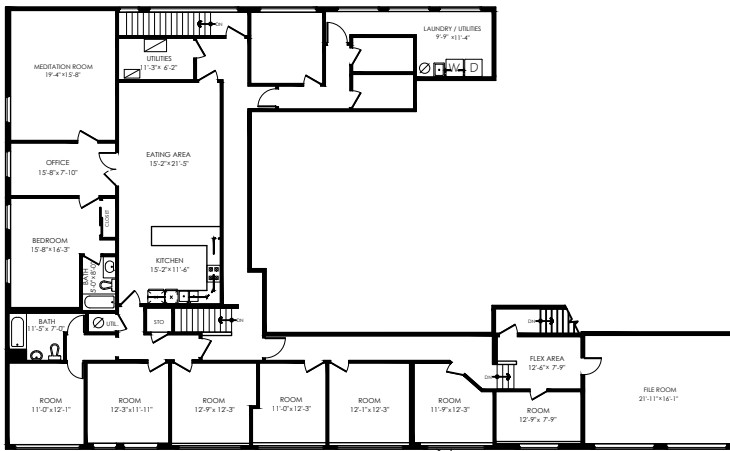
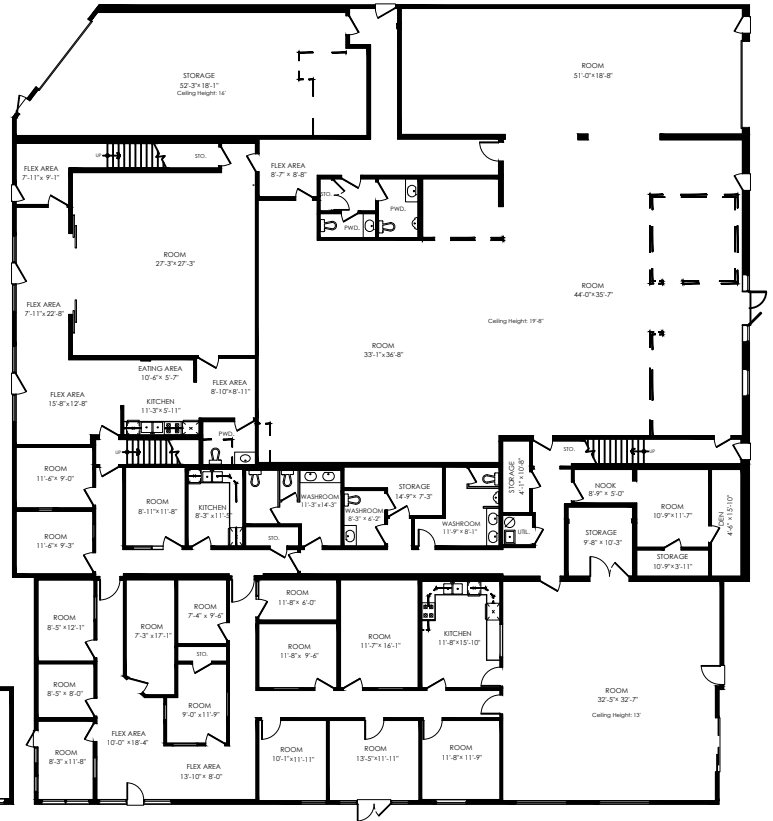
Main Floor: 12,670 sq.ft.  
Upper Floor: 4,213 sq.ft.  
**Total: 16,883 sq.ft.**

Upper Floor Gym: 585 sq.ft.  
Main Floor Gym: 3,047 sq.ft.  
**Total: 3,632 sq.ft.**

**Gym Upper Floor**  
Floor Area: 585 sq.ft.  
Ceiling Height: 10'-8"



**Gym Main Floor**  
Floor Area: 3047 sq.ft.  
Ceiling Height: 19'-9"



**Upper Floor Plan**  
Floor Area: 4213 sq.ft.  
Ceiling Height: 8'-4"

**Main Floor Plan**  
Floor Area: 12670 sq.ft.  
Ceiling Height: 9'-11"

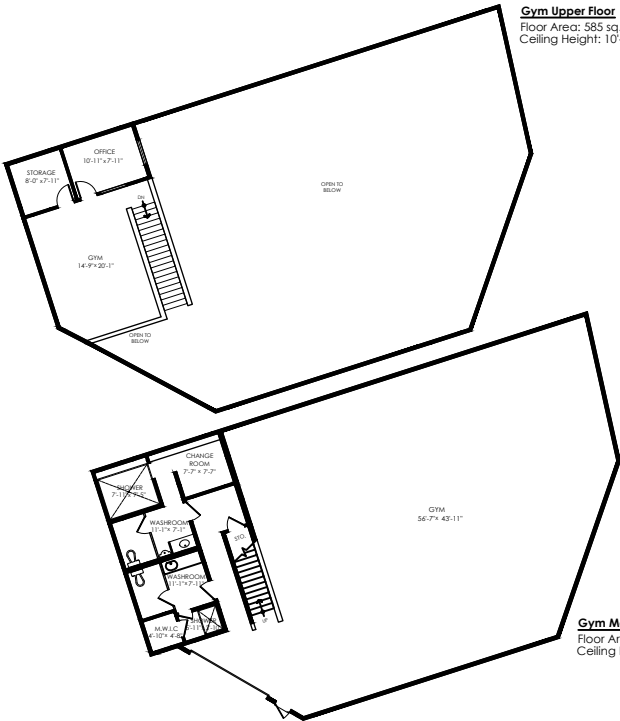


# 31581 S Fraser Way, Abbotsford

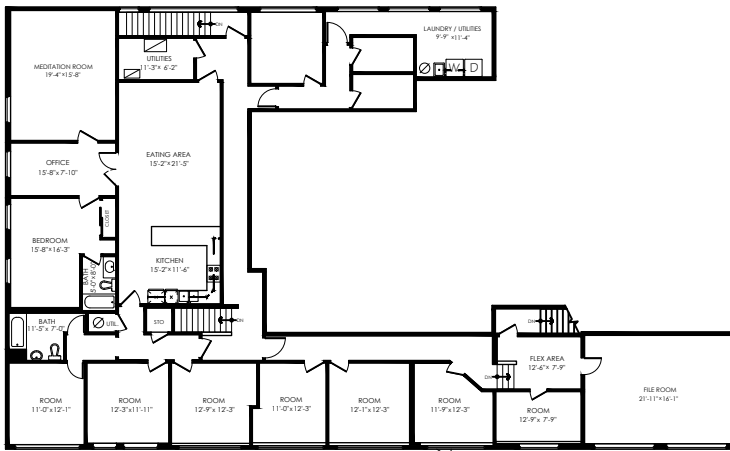
Main Floor: 12,670 sq.ft.  
 Upper Floor: 4,213 sq.ft.  
**Total: 16,883 sq.ft.**

Upper Floor Gym: 585 sq.ft.  
 Main Floor Gym: 3,047 sq.ft.  
**Total: 3,632 sq.ft.**

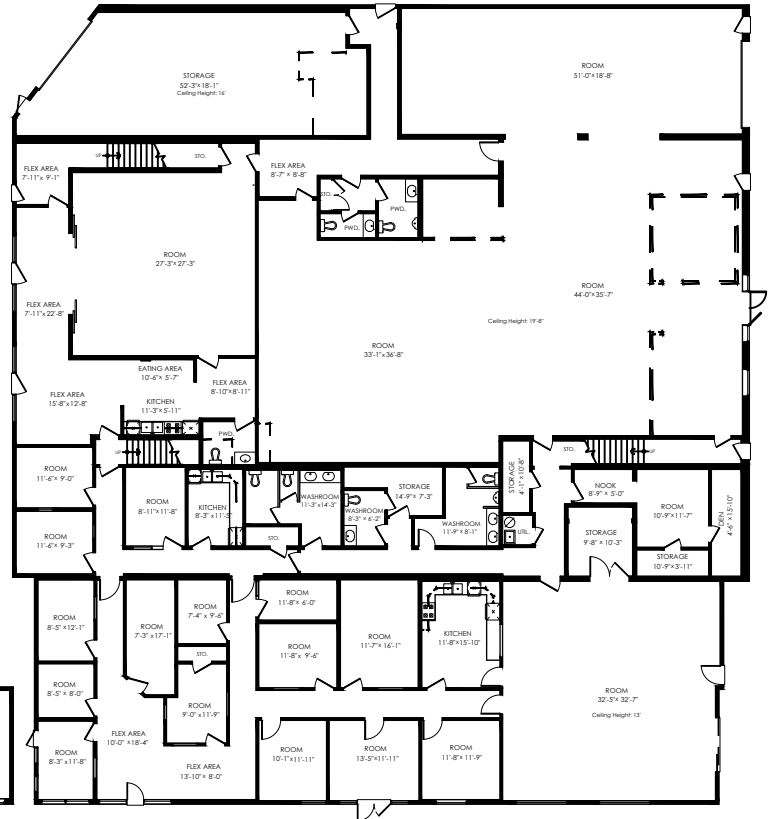
**Gym Upper Floor**  
 Floor Area: 585 sq.ft.  
 Ceiling Height: 10'-8"



**Gym Main Floor**  
 Floor Area: 3047 sq.ft.  
 Ceiling Height: 19'-9"



**Upper Floor Plan**  
 Floor Area: 4213 sq.ft.  
 Ceiling Height: 8'-4"



**Main Floor Plan**  
 Floor Area: 12670 sq.ft.  
 Ceiling Height: 9'-1"





## 31581 S Fraser Way, Abbotsford

Unit Area: 16,883 sq.ft.  
 Gym Unit Area: 3,632 sq.ft.  
 Date: 2020-10-08

*SQFT based on interior measurements, not taken from original blueprints. Demising walls assumed to be 8.5". SQFT to BOMA Standard for retail ANSI/BOMA Z 65.5.5-2010: SQFT taken to center of demising walls and to ext. line of ext. walls. To the glass line of walls with 50% or more glass. Door setbacks included in sqft. No common area or gross up (if any) accounted for in calculations.*

