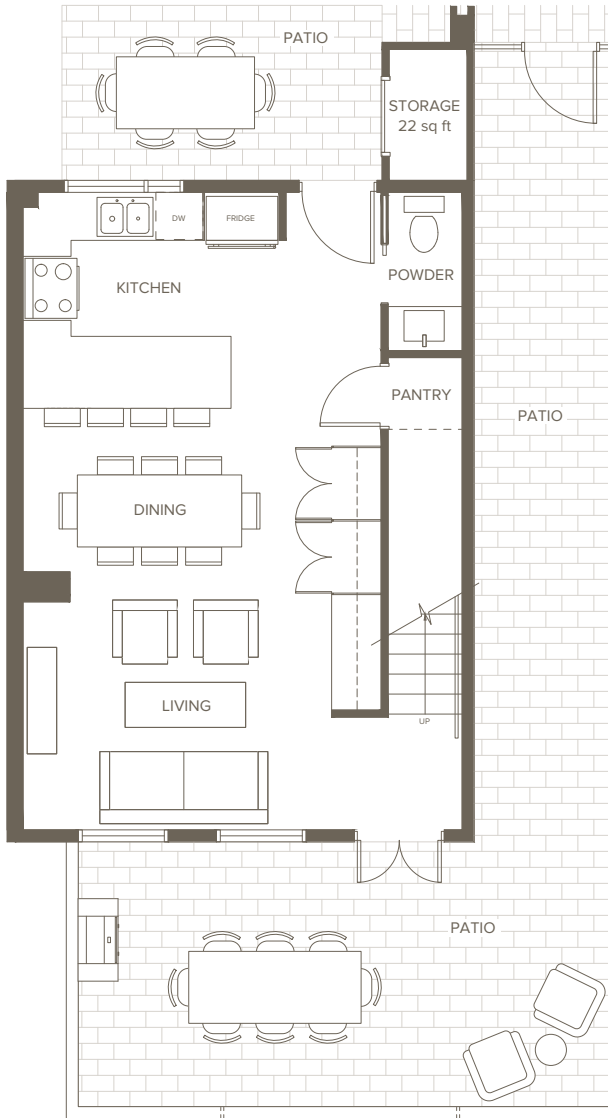
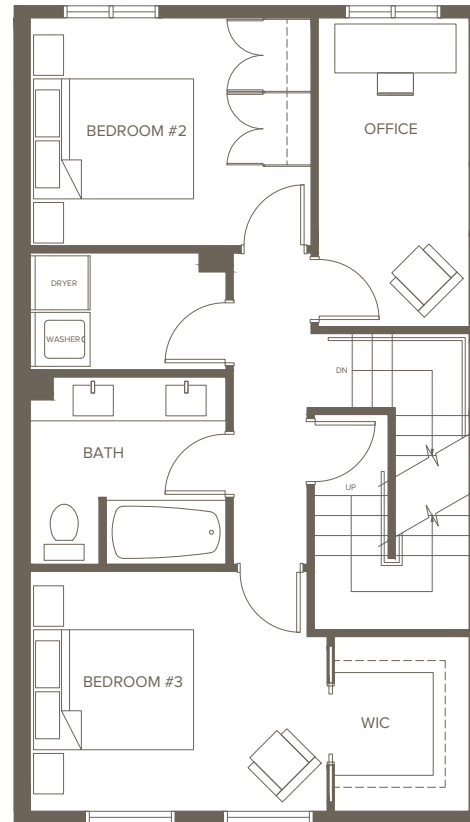


1515 RUPERT

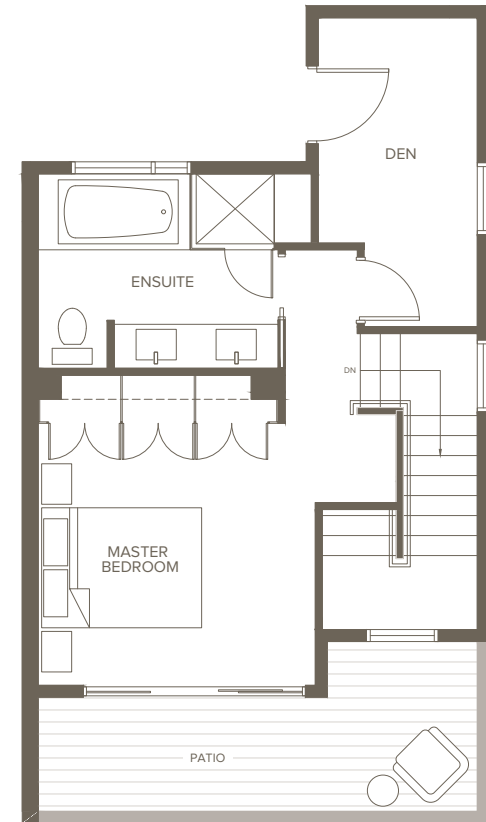
UNIT B
 3 BED + DEN | 2.5 BATH
 LIVING 1,640 sq. ft.
 PATIO 683 sq. ft.
 TOTAL 2,323 sq. ft.



MAIN

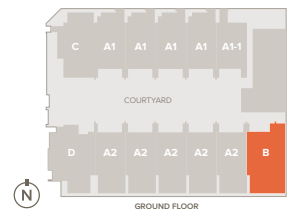


SECOND



UPPER

Courtyard Townhomes



Dimensions and square footage shown may vary. Areva Living reserves the right to modify design and specifications without notice. For additional information, please consult with a sales representative. E&O.E.