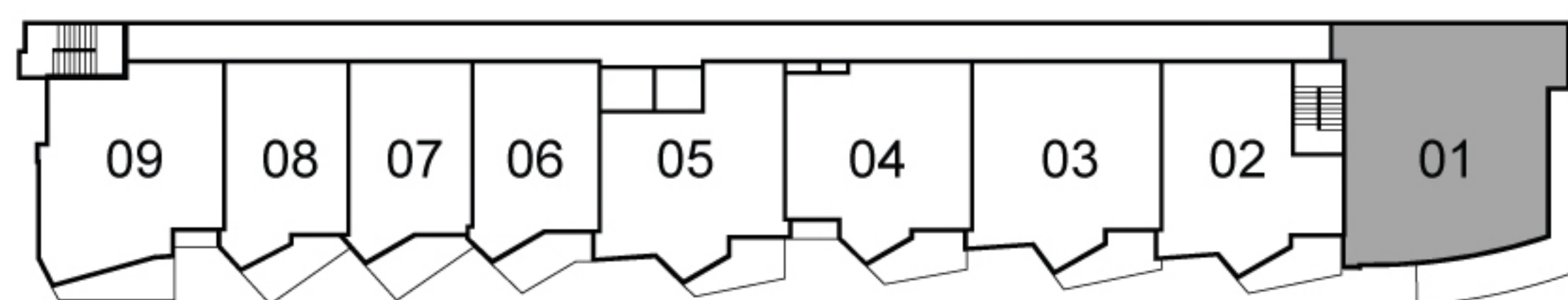
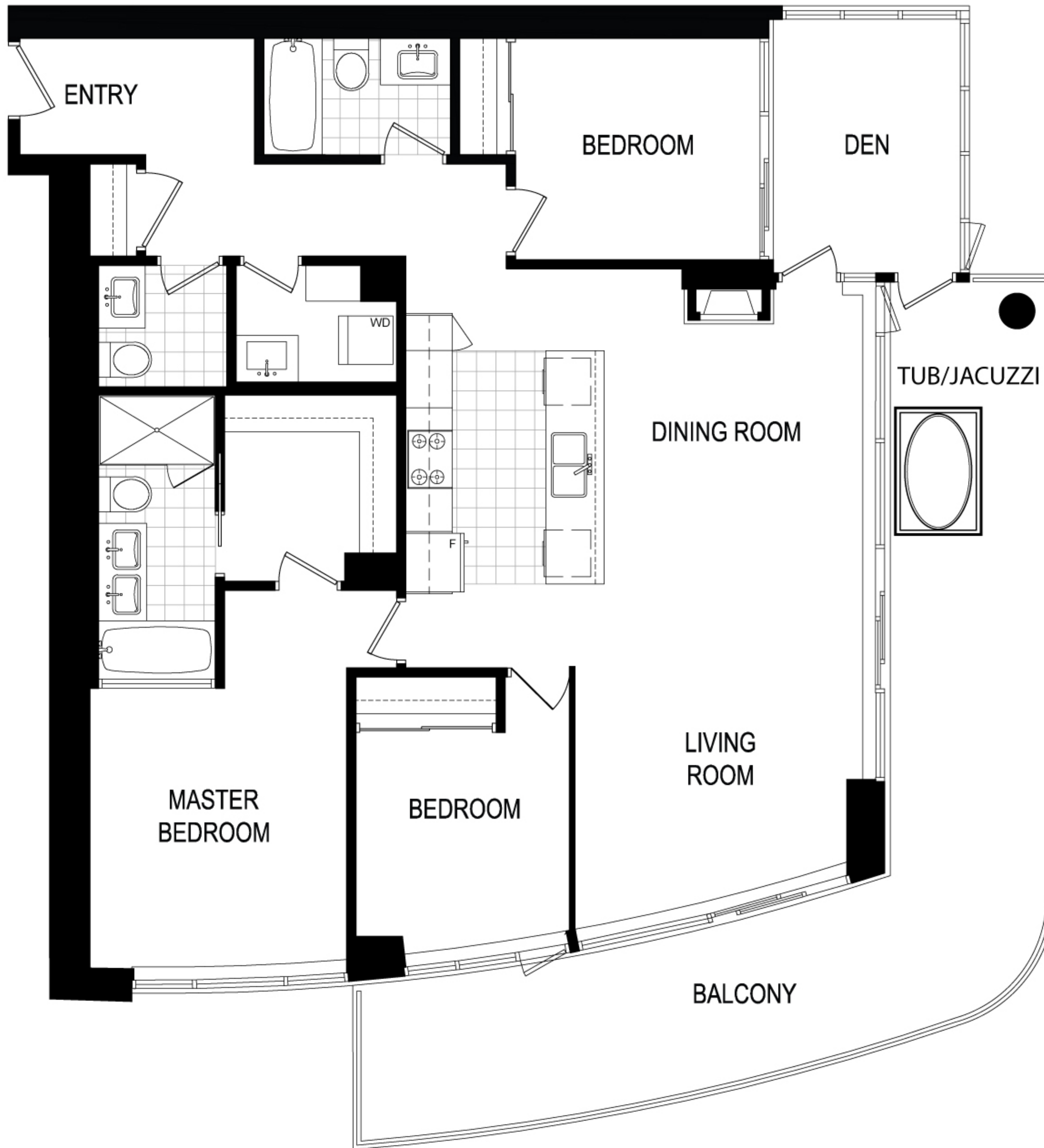


## 3 BEDROOM + DEN

1,446 sq.ft.+ BALCONY 388 sq.ft. = 1,834 sq.ft.

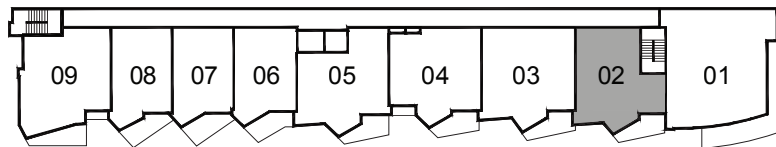
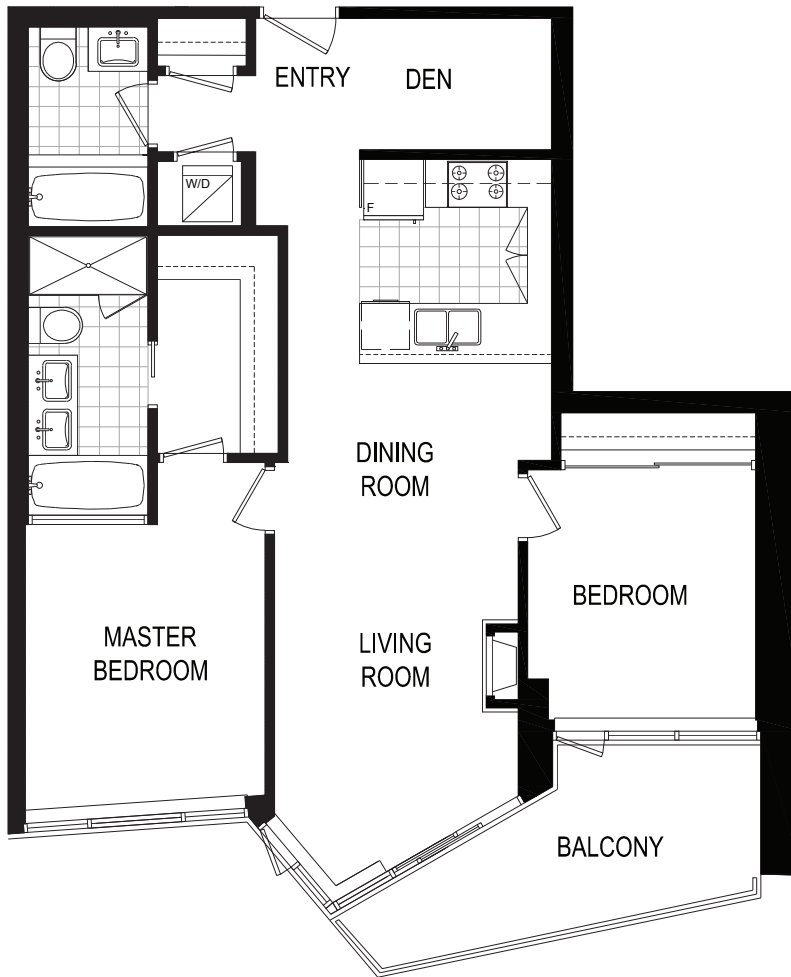
## SUITE 01



LEVEL 2 TO 12

**2 BEDROOM + DEN**  
910 sq.ft.+ BALCONY 109 sq.ft. = 1,019 sq.ft

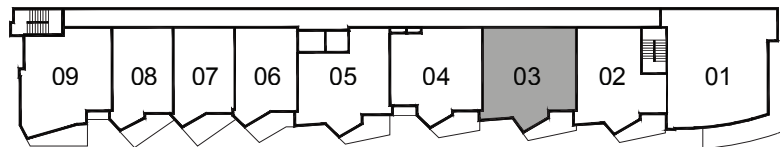
**SUITE 02**



LEVEL 2 TO 12

**2 BEDROOM + DEN**  
1,047 sq.ft.+ BALCONY 107 sq.ft. = 1,154 sq.ft

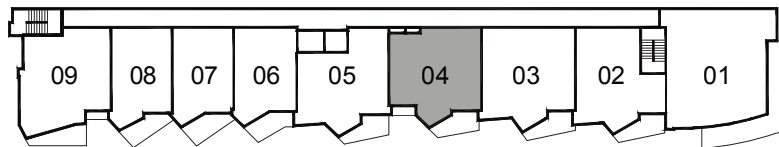
**SUITE 03**



LEVEL 2 TO 12

**2 BEDROOM + DEN**  
939 sq.ft.+ BALCONY 133 sq.ft. = 1,072 sq.ft

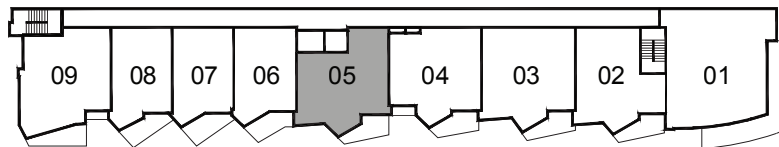
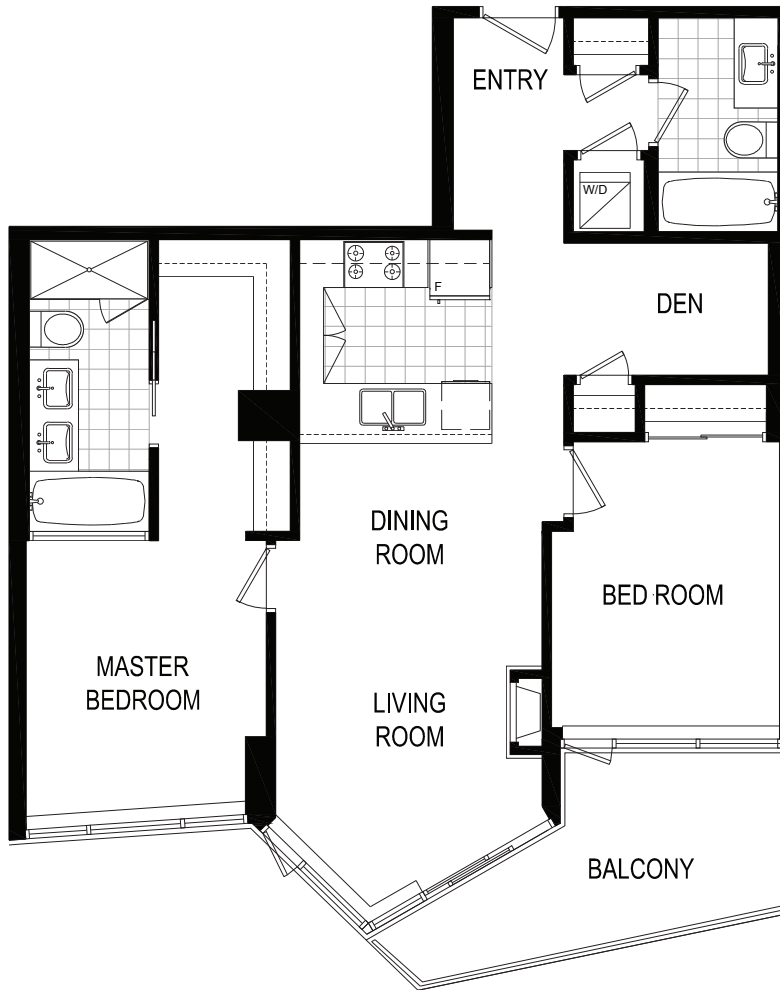
**SUITE 04**



LEVEL 2 TO 12

**2 BEDROOM + DEN**  
933 sq.ft.+ BALCONY 104 sq.ft. = 1,037 sq.ft

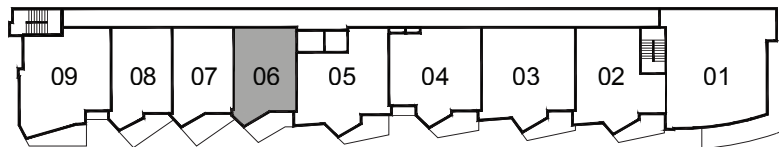
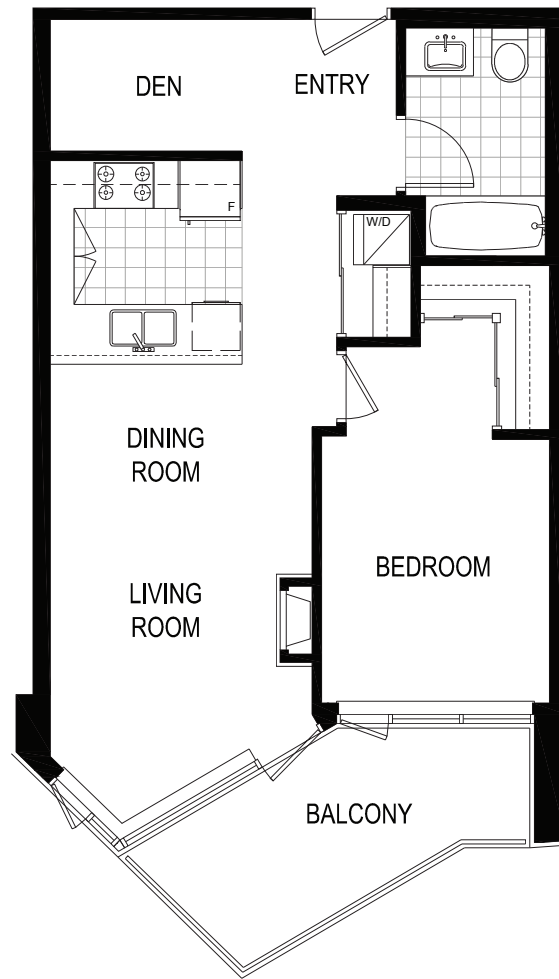
**SUITE 05**



LEVEL 2 TO 12

**1 BEDROOM + DEN**  
675 sq.ft. + BALCONY 104 sq.ft. = 779 sq.ft

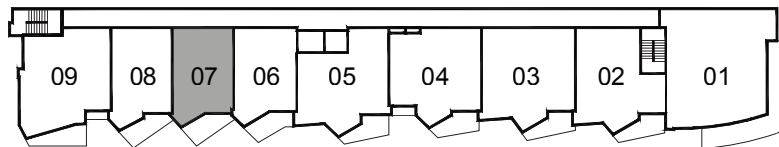
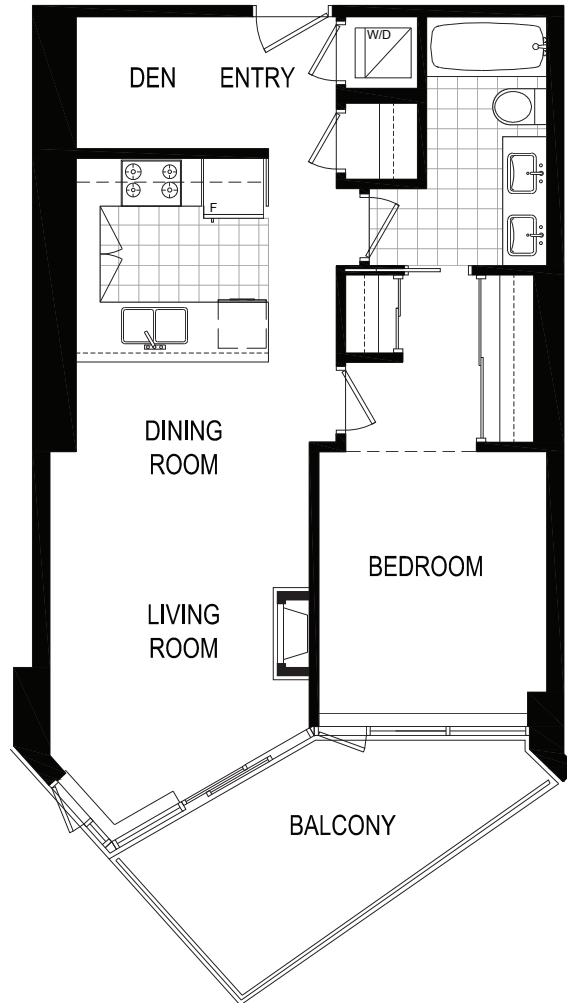
**SUITE 06**



LEVEL 2 TO 12

**1 BEDROOM + DEN**  
672 sq.ft.+ BALCONY 108 sq.ft. = 780 sq.ft

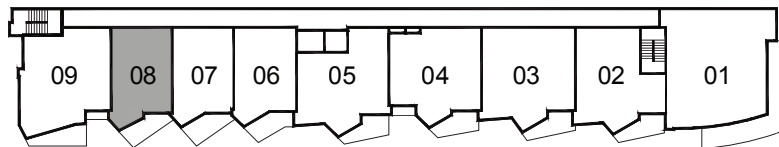
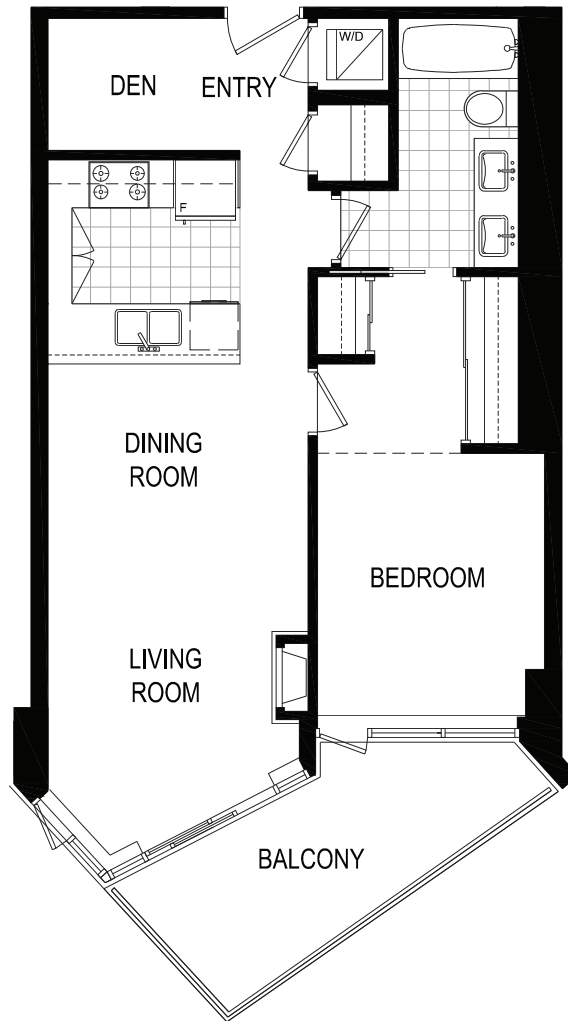
**SUITE 07**



LEVEL 2 TO 12

**1 BEDROOM + DEN**  
692 sq.ft. + BALCONY 107 sq.ft. = 799 sq.ft

**SUITE 08**



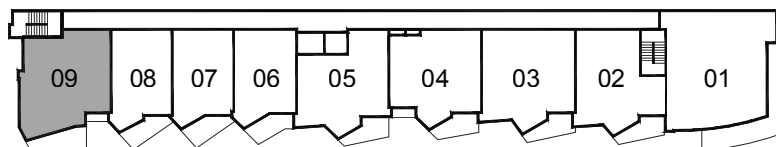
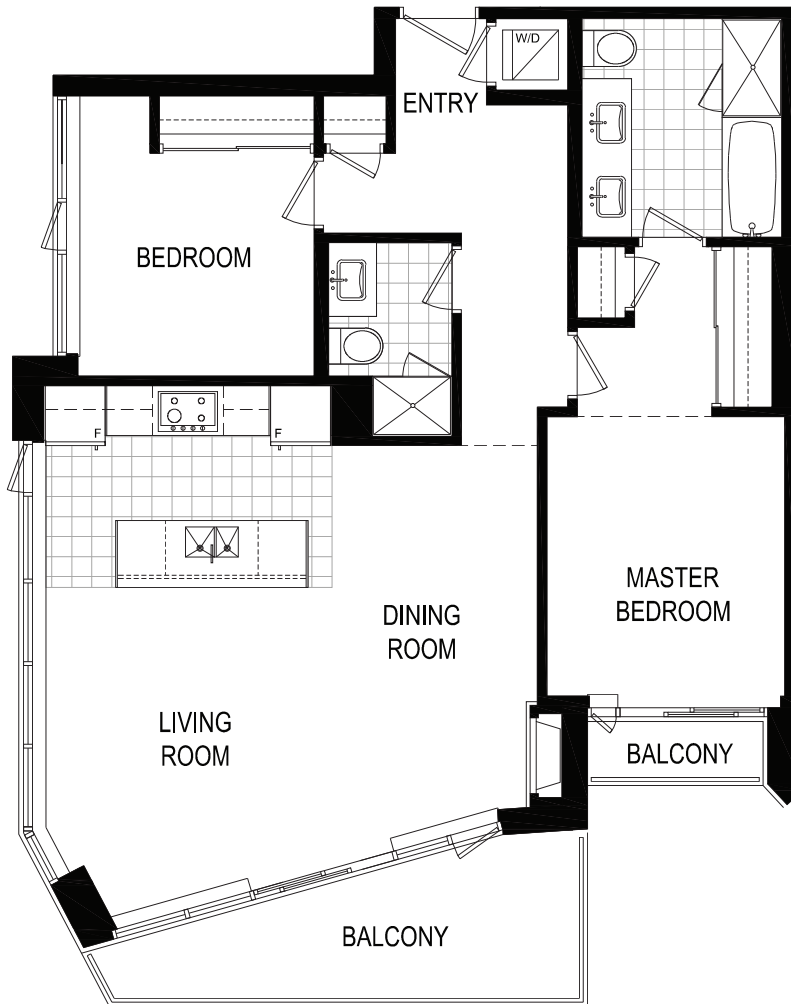
LEVEL 2 TO 12

In the interest of product improvement and maintaining high standard of these homes, the developer reserves the right to make modifications and changes to plans, specifications and features. Sizes and dimensions are approximate and may vary with actual strata plan and survey.



**2 BEDROOM**  
1,024 sq.ft.+ BALCONY 130 sq.ft. = 1,154 sq.ft

**SUITE 09**



LEVEL 2 TO 12