



Salt & Meadow

3

AT BOARDWALK

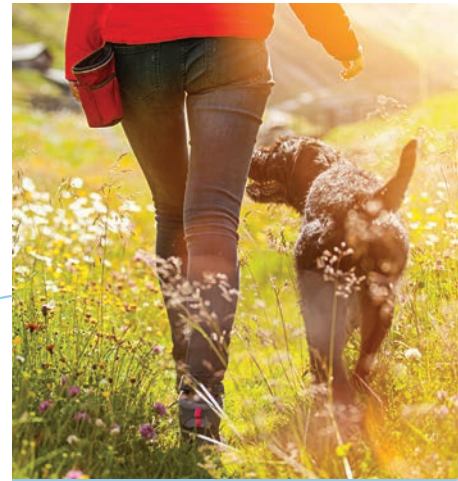
EARLY INFORMATION PACKAGE

Waterfront living is yours at Boardwalk



Boardwalk's iconic condominium collection Salt & Meadow is back with our third and final building of waterfront homes. We have heard time and time again from our buyers that there is no comparable offering in the market that features the same affordable oceanfront living in a thriving and established master-planned community. The best of Boardwalk is yours to enjoy, along with a lush 35,000 sq. ft. meadow right outside your door and the Beach House amenity and pool across the street.

The homes at Salt & Meadow are designed with the spectacular natural surroundings in mind. The collection's three mid-rise buildings are arranged to celebrate the epic views of the ocean, meadow and mountains. You'll see the sun set over rippling waves and the moon rise on clear nights. Groups gathering in the central green space and others finding quiet corners to rest and reflect. It's a community designed for people, where the buildings bow to nature.



**PHASE 3
COMING
SOON**

**PHASE 1
SOLD
OUT**

**PHASE 2
SOLD
OUT**



Architecture and design that celebrates the West Coast

Salt & Meadow's architecture is defined by a contemporary West Coast aesthetic, incorporating post-and-beam construction and authentic materials, such as warm timber accents, that highlight the natural Pacific Northwest environment. Brick detailing anchors the buildings in place, while lighter materials on the upper levels blend into the calmness of the area. Large windows and balconies embrace the spectacular views.





**Spend
sunny days
in the meadow**

With expansive open spaces along with ample seating and conversation nooks, the meadow is the perfect place to take in the salty ocean breeze. Bring a book and blanket for some quiet reading time, or get a group together and toss a Frisbee, play bocce, pack a picnic or simply soak up the sun on a warm afternoon. Share memorable meals at the barbecue and outdoor dining patio, and as the sun sets, gather around the flickering firepit for a soothing end to the day. When you're ready to call it a night, your doorstep is just seconds away. It couldn't be more idyllic and convenient.

A space for rest, relaxation and play

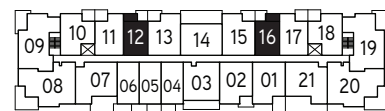
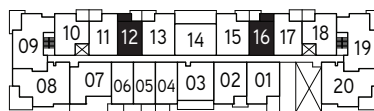
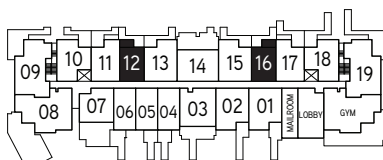
**“Tsawwassen is the sunniest, least
rainy place in Metro Vancouver”**

- Daily Hive



JR 1 BED + 1 BATH
INTERIOR: 469 SQ FT
PATIO: 118 SQ FT
BALCONY: 60 SQ FT

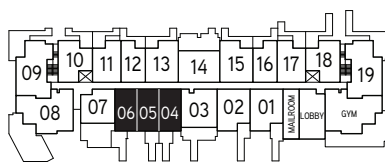
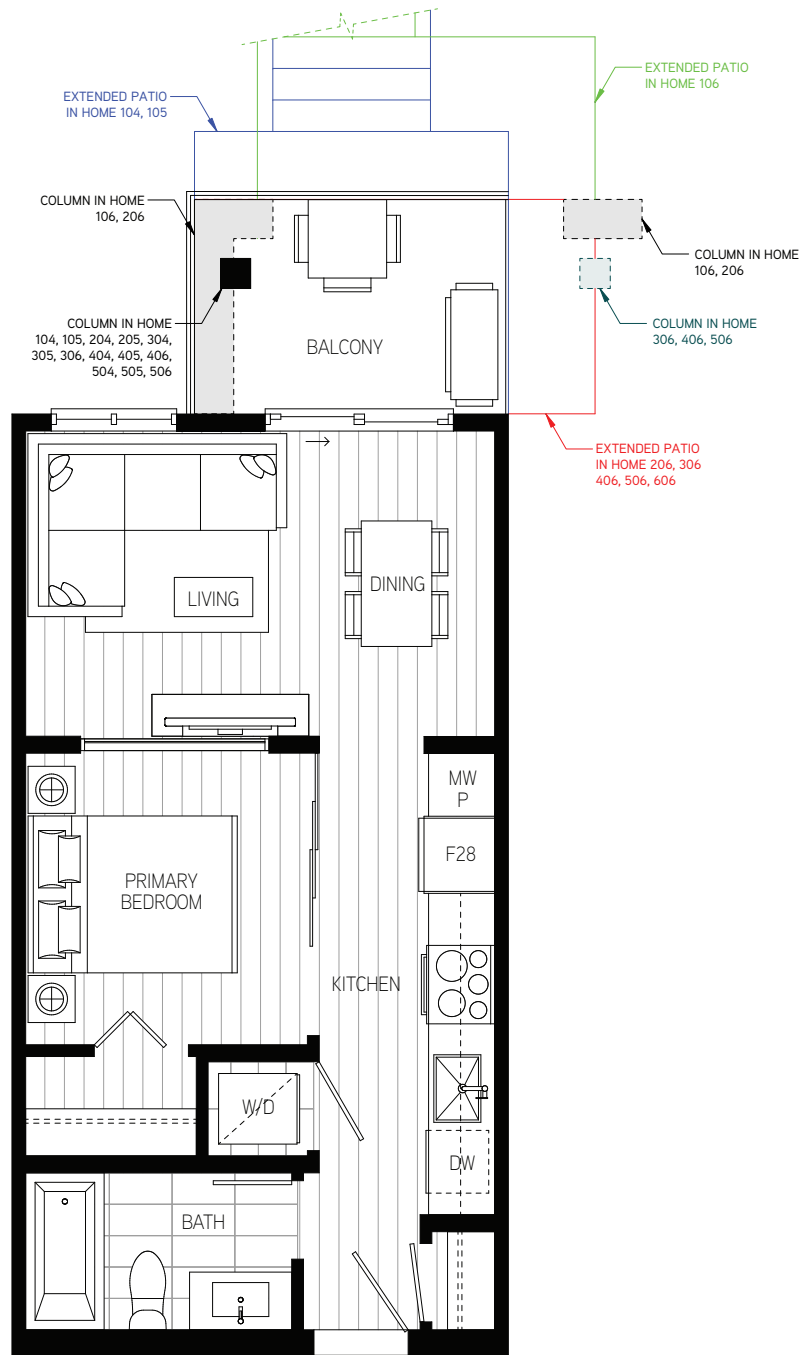
AT BOARDWALK



*Note that there are variations in patio/balcony extents and column locations. Please see the Sales Team for more information. The developer reserves the right to make changes and modifications to the information contained herein without prior notice. Artistic renderings are representational only and may not be accurate. Sizes, dimensions, and materials are approximate and plans may be mirrored. This is not an offering for sale. Such an offering can only be made by a disclosure statement. E.&O.E. May 3, 2023.

JR 1 BED + 1 BATH
INTERIOR: 463 SQ FT
PATIO: 162-177 SQ FT
BALCONY: 68-88 SQ FT

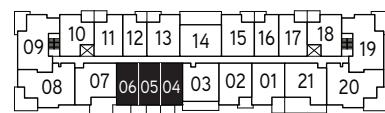
AT BOARDWALK



LEVEL 1



LEVEL 2



LEVEL 3-6



*Note that there are variations in patio/balcony extents and column locations. Please see the Sales Team for more information. The developer reserves the right to make changes and modifications to the information contained herein without prior notice. Artistic renderings are representational only and may not be accurate. Sizes, dimensions, and materials are approximate and plans may be mirrored. This is not an offering for sale. Such an offering can only be made by a disclosure statement. E.&O.E. May 3, 2023.

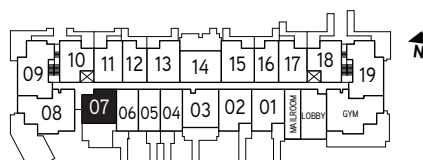
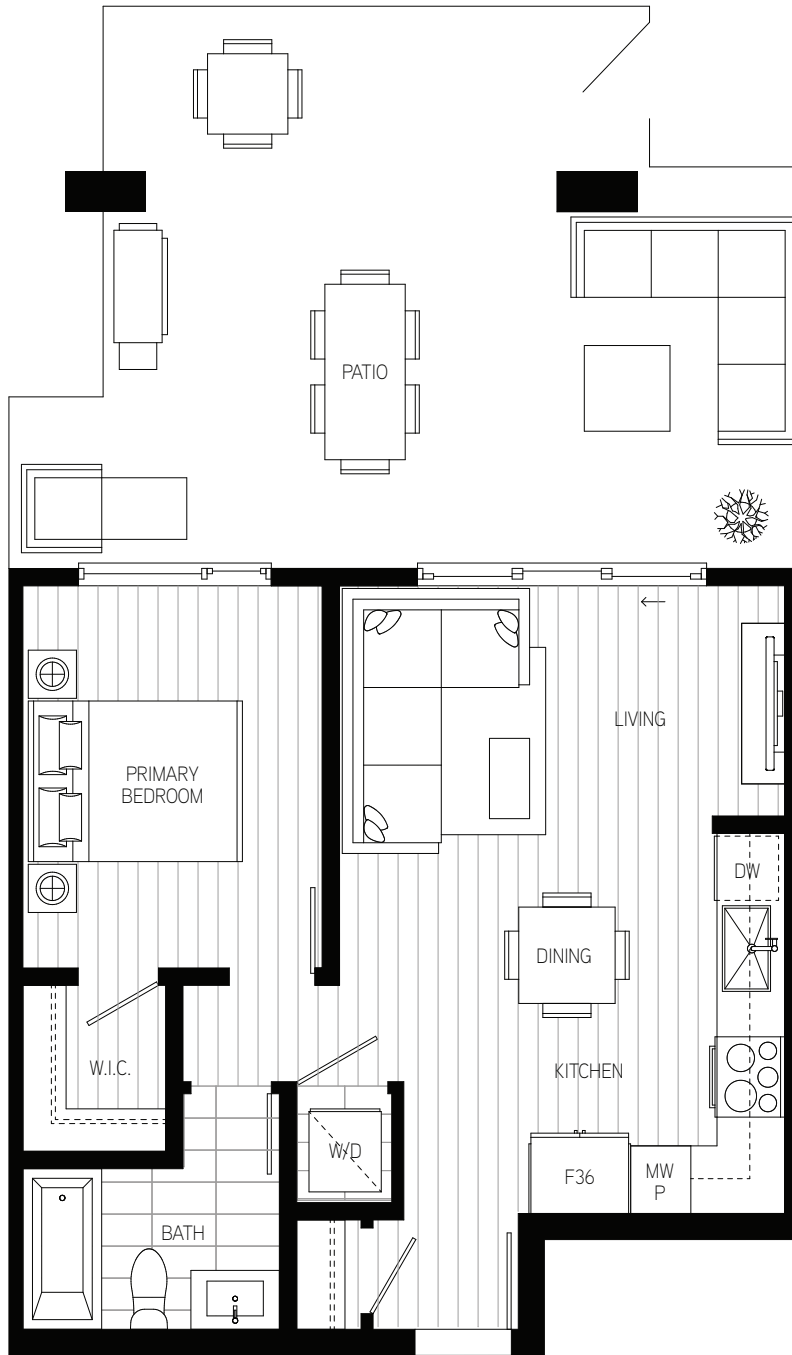
PLAN

B1

1 BED + 1 BATH
INTERIOR: 553 SQ FT
PATIO: 360 SQ FT

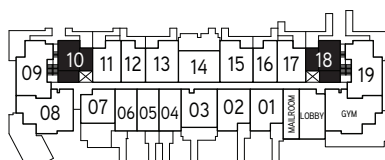
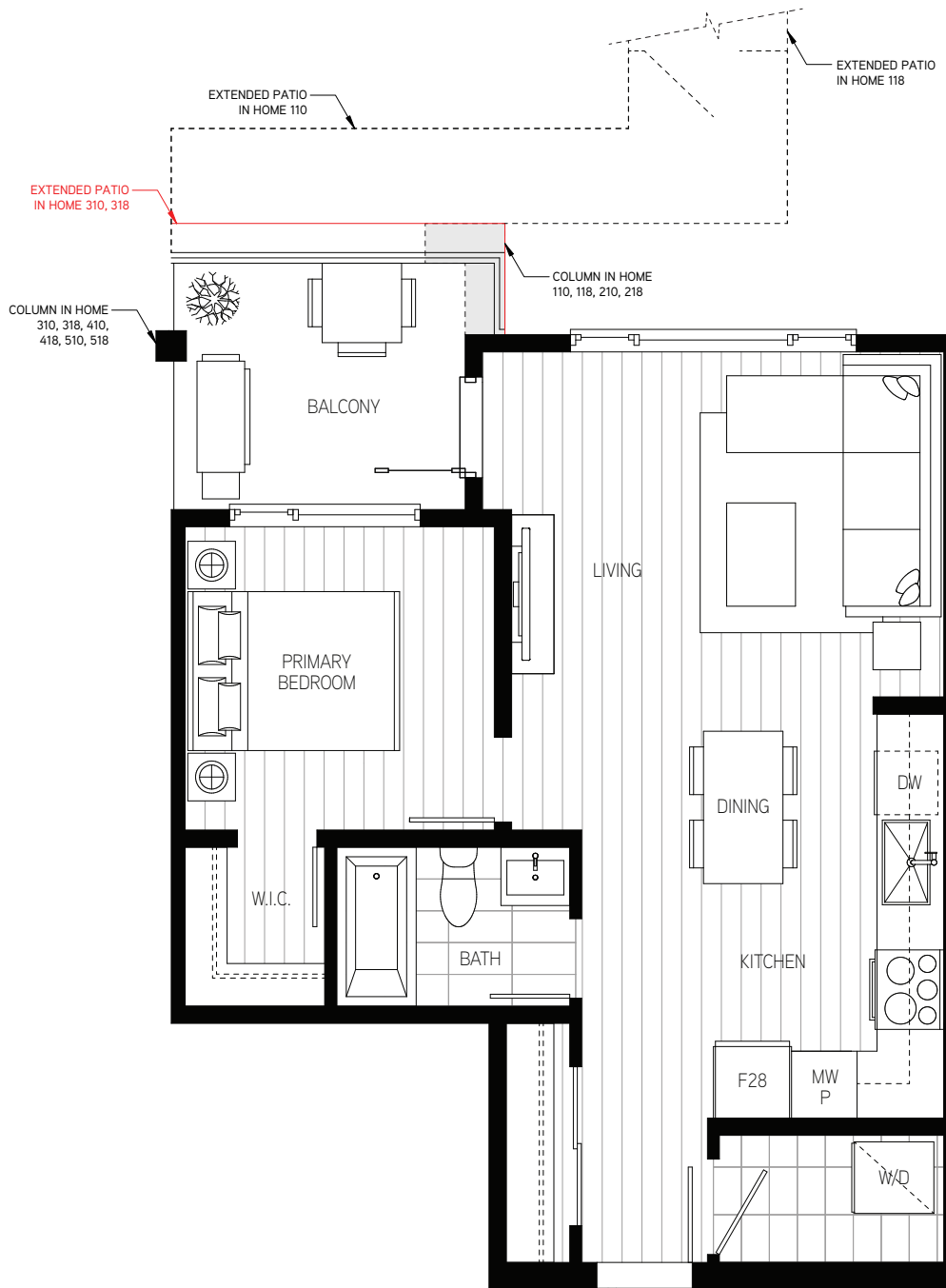
Salt & Meadow | 3

AT BOARDWALK

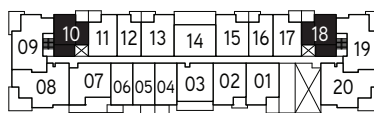


LEVEL 1

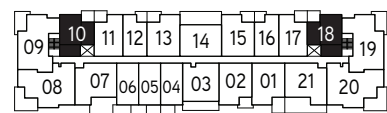
The developer reserves the right to make changes and modifications to the information contained herein without prior notice. Artistic renderings are representational only and may not be accurate. Sizes, dimensions, and materials are approximate and plans may be mirrored. This is not an offering for sale. Such an offering can only be made by a disclosure statement. E.&O.E. May 3, 2023.



LEVEL 1



LEVEL 2

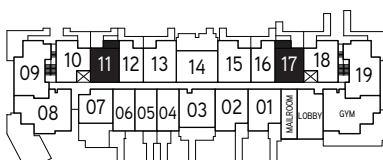
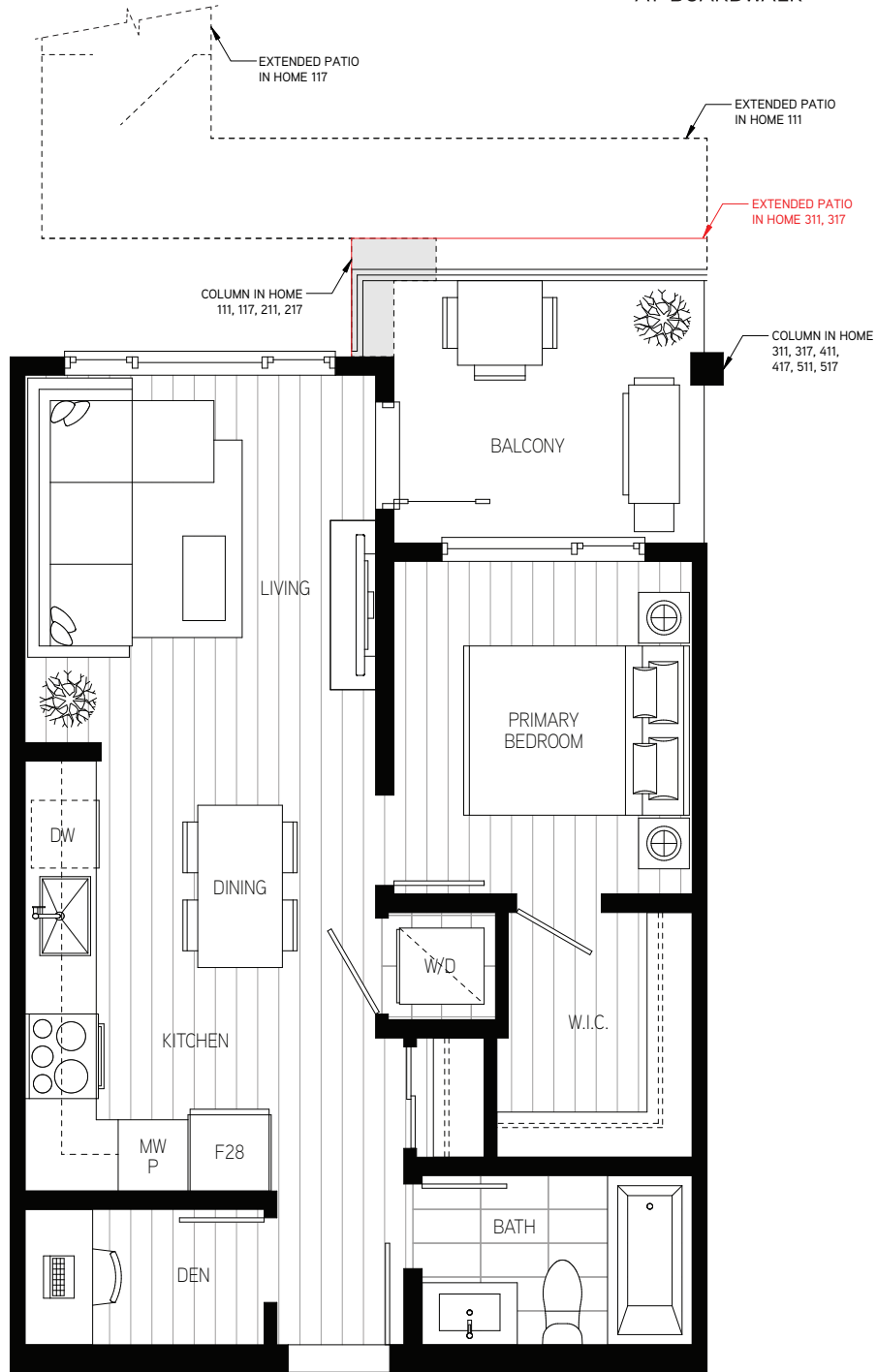


LEVEL 3-6

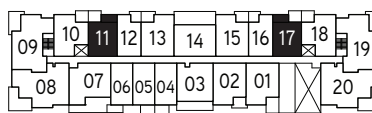
*Note that there are variations in patio/balcony extents and column locations. Please see the Sales Team for more information. The developer reserves the right to make changes and modifications to the information contained herein without prior notice. Artistic renderings are representational only and may not be accurate. Sizes, dimensions, and materials are approximate and plans may be mirrored. This is not an offering for sale. Such an offering can only be made by a disclosure statement. E.&O.E. May 3, 2023.

1 BED + DEN + 1 BATH
INTERIOR: 551 SQ FT
PATIO: 147-169 SQ FT
BALCONY: 74-88 SQ FT

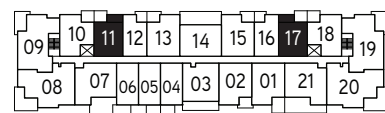
AT BOARDWALK



LEVEL 1



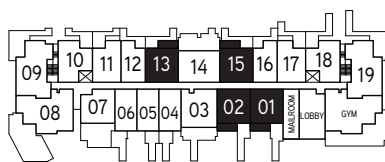
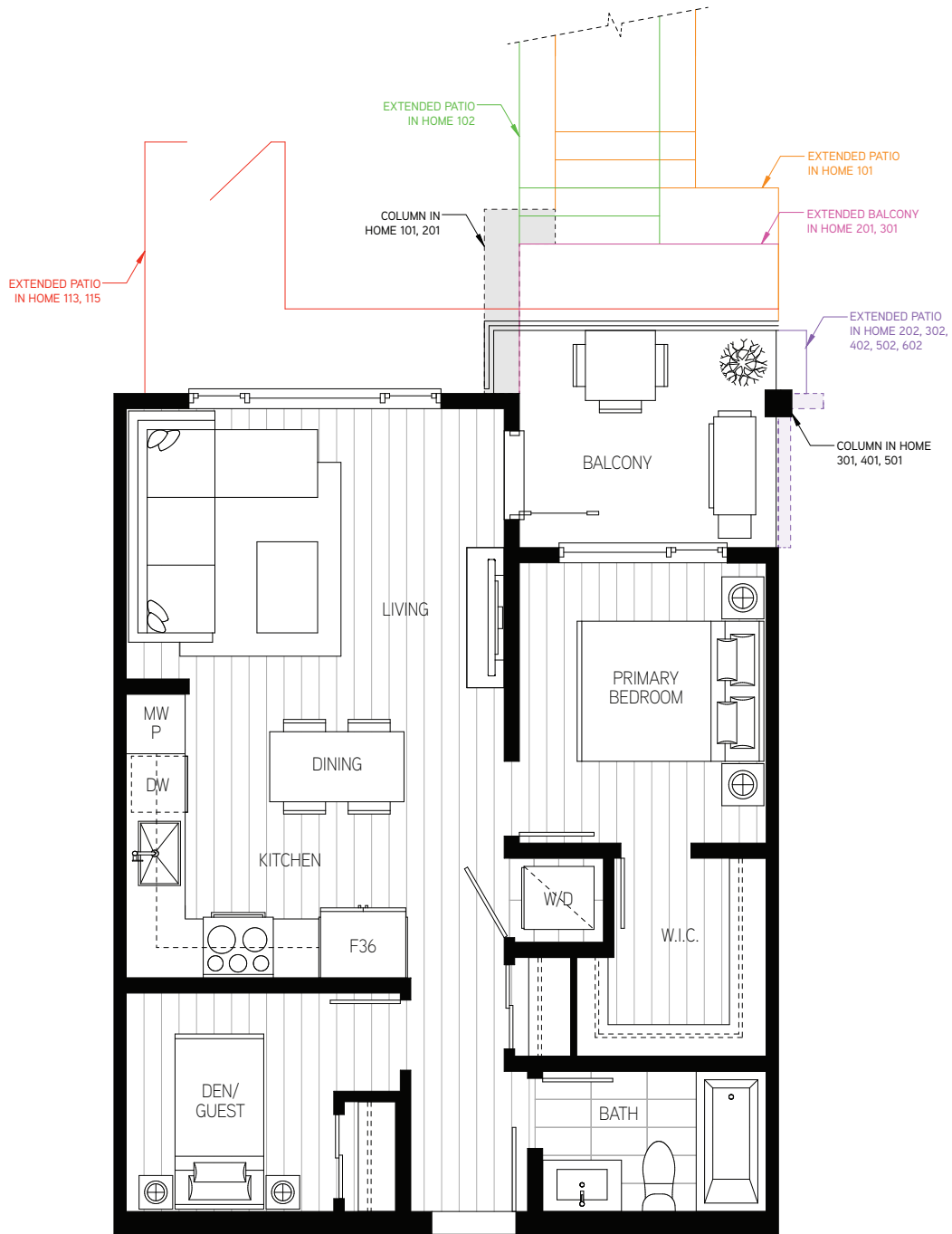
LEVEL 2



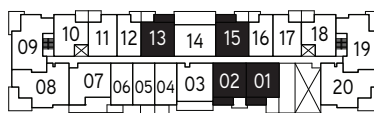
LEVEL 3-6



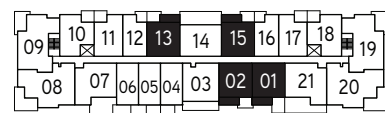
*Note that there are variations in patio/balcony extents and column locations. Please see the Sales Team for more information. The developer reserves the right to make changes and modifications to the information contained herein without prior notice. Artistic renderings are representational only and may not be accurate. Sizes, dimensions, and materials are approximate and plans may be mirrored. This is not an offering for sale. Such an offering can only be made by a disclosure statement. E.&O.E. May 3, 2023.



LEVEL 1

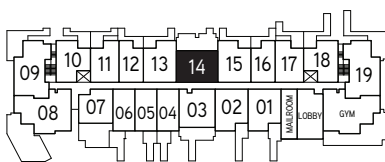
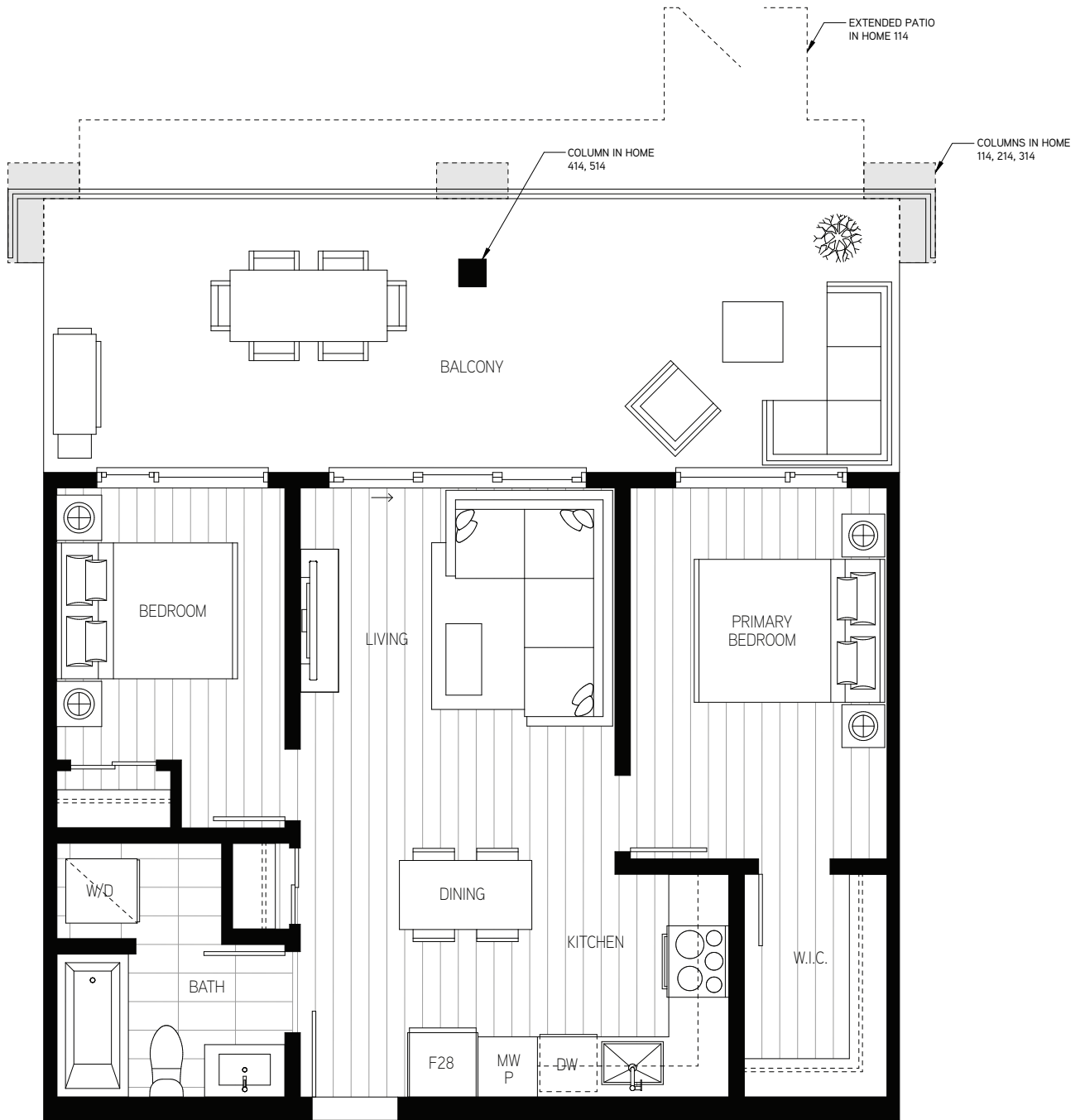


LEVEL 2

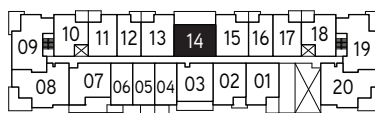


LEVEL 3-6

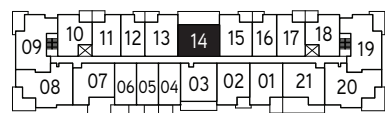
*Note that there are variations in patio/balcony extents and column locations. Please see the Sales Team for more information. The developer reserves the right to make changes and modifications to the information contained herein without prior notice. Artistic renderings are representational only and may not be accurate. Sizes, dimensions, and materials are approximate and plans may be mirrored. This is not an offering for sale. Such an offering can only be made by a disclosure statement. E.&O.E. May 3, 2023.



LEVEL 1

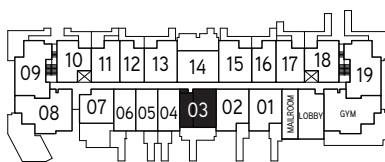
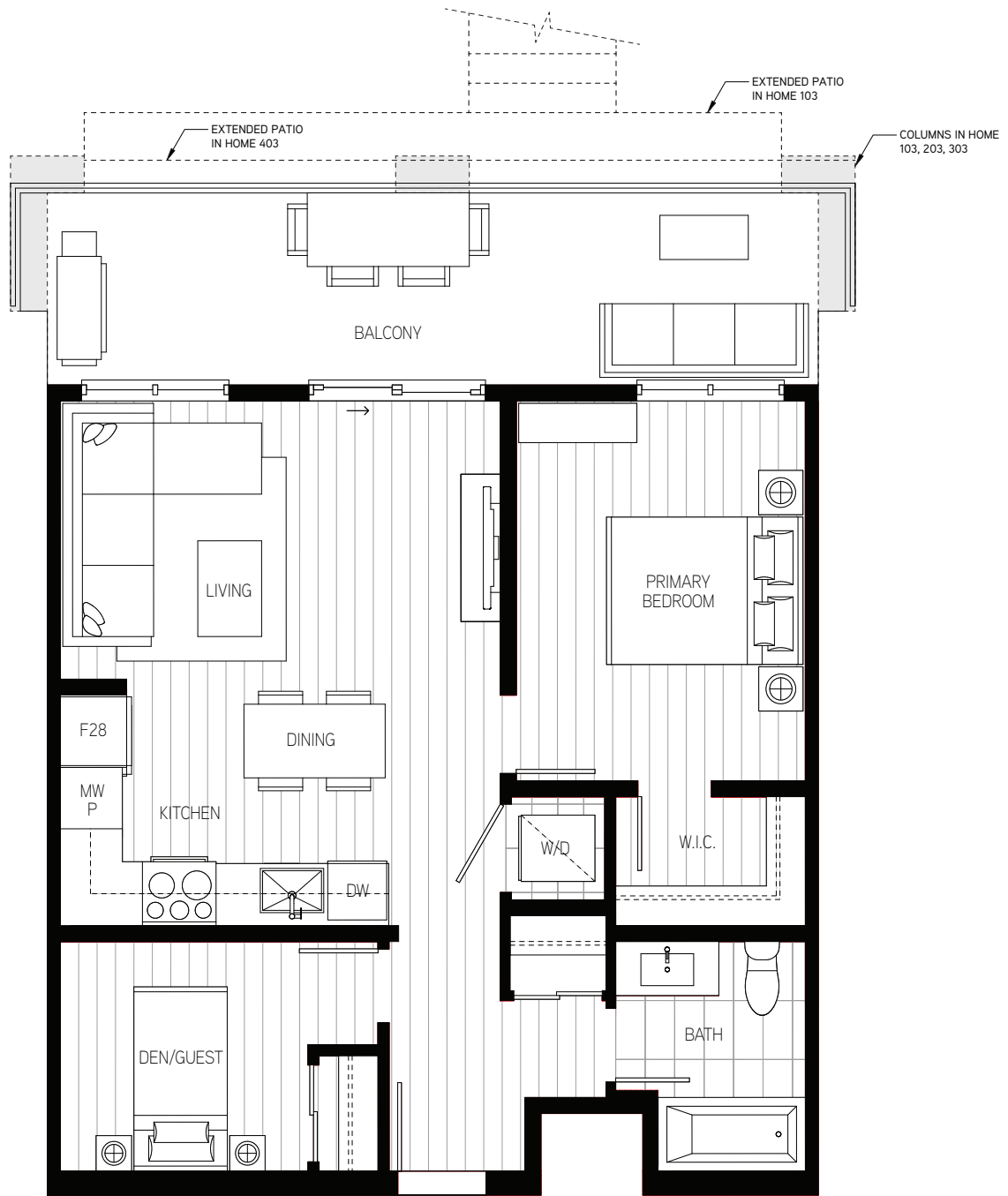


LEVEL 2

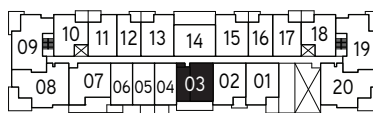


LEVEL 3-6

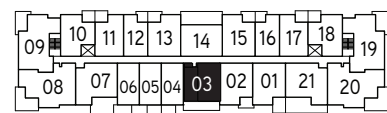
*Note that there are variations in patio/balcony extents and column locations. Please see the Sales Team for more information. The developer reserves the right to make changes and modifications to the information contained herein without prior notice. Artistic renderings are representational only and may not be accurate. Sizes, dimensions, and materials are approximate and plans may be mirrored. This is not an offering for sale. Such an offering can only be made by a disclosure statement. E.&O.E. May 3, 2023.



LEVEL 1



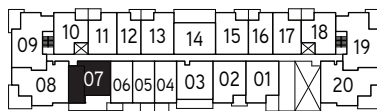
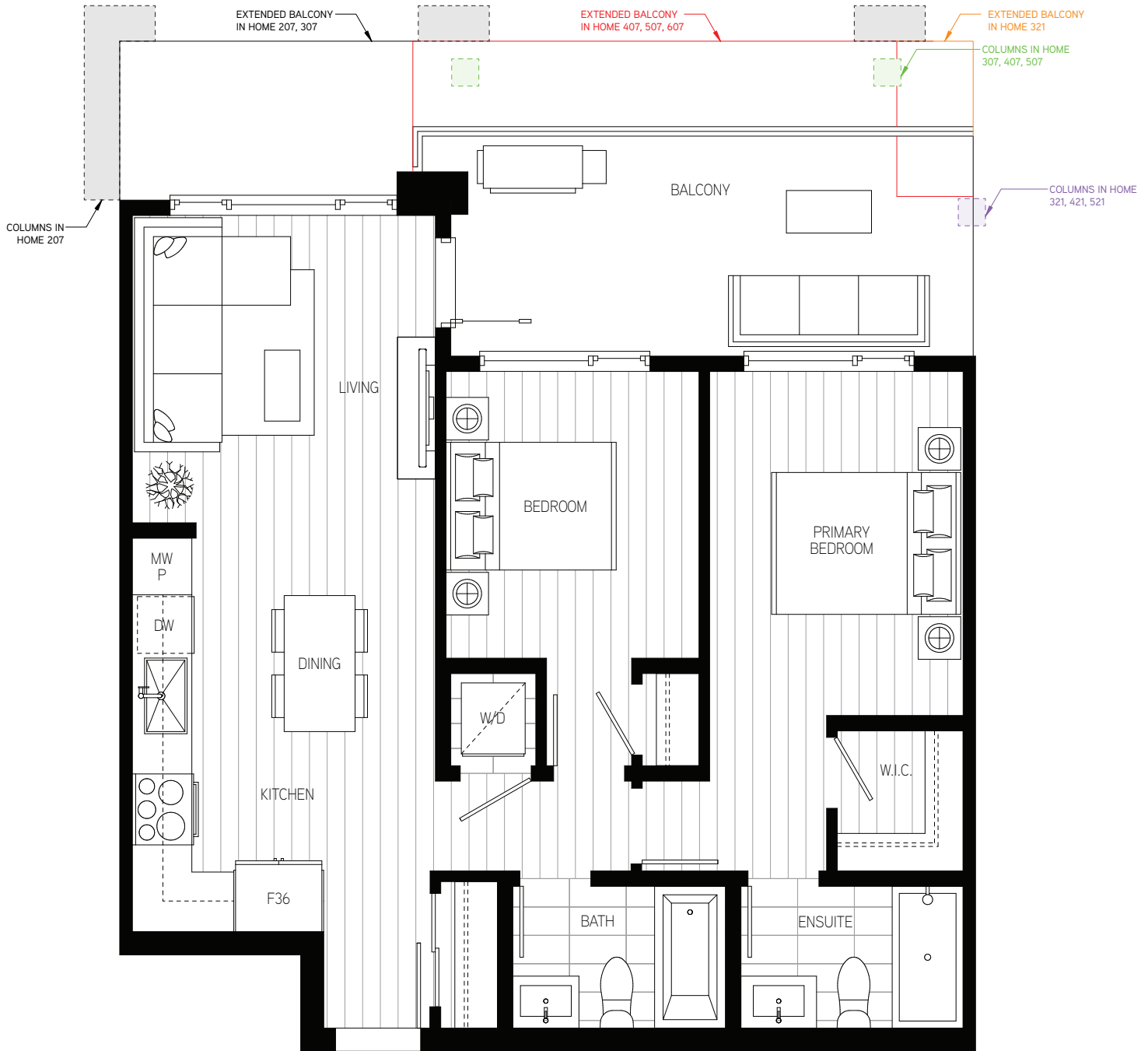
LEVEL 2



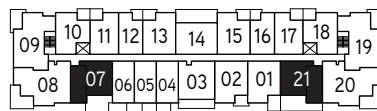
LEVEL 3-6



*Note that there are variations in patio/balcony extents and column locations. Please see the Sales Team for more information. The developer reserves the right to make changes and modifications to the information contained herein without prior notice. Artistic renderings are representational only and may not be accurate. Sizes, dimensions, and materials are approximate and plans may be mirrored. This is not an offering for sale. Such an offering can only be made by a disclosure statement. E.&O.E. May 3, 2023.

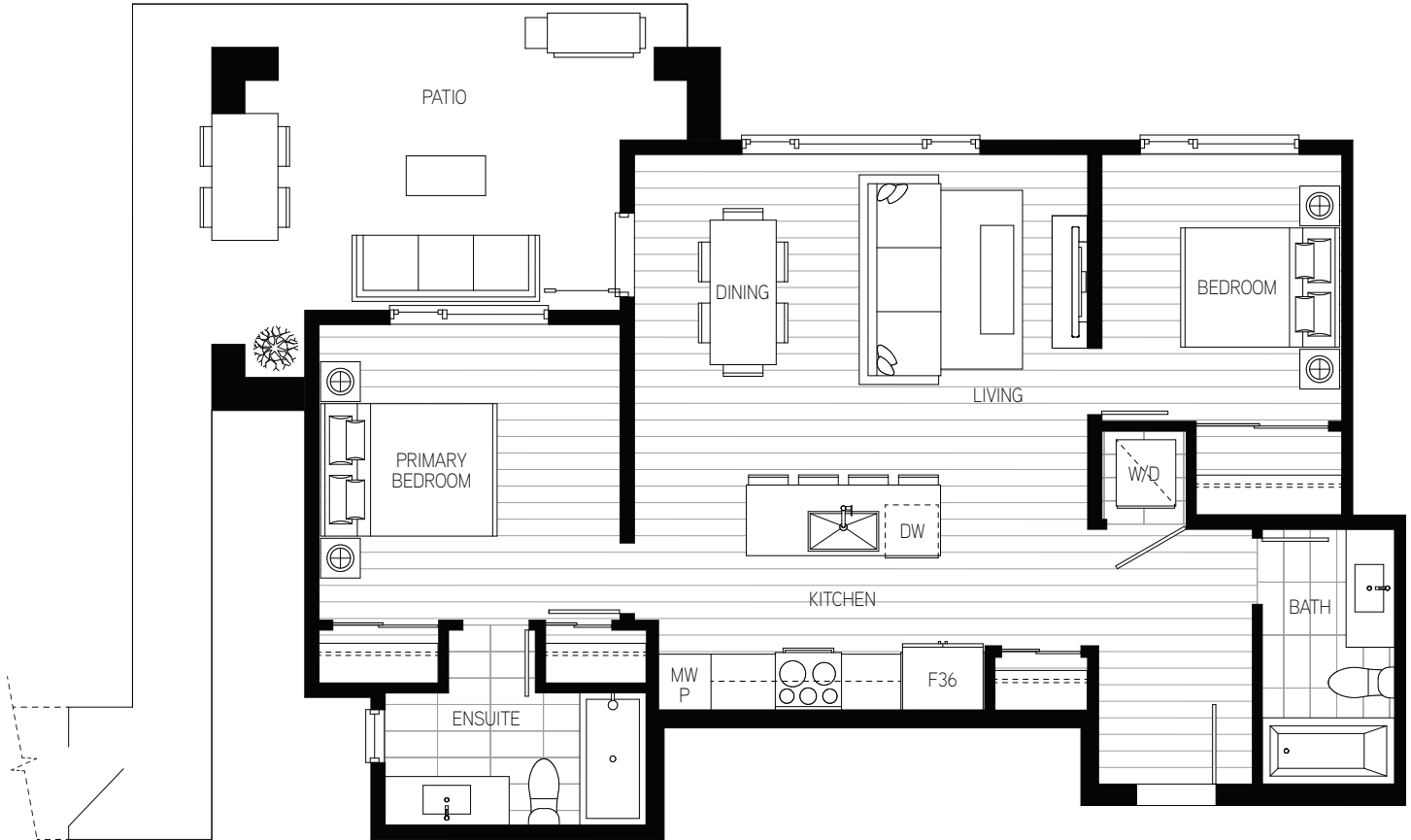


LEVEL 2

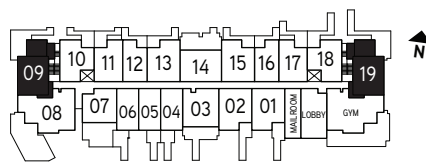


LEVEL 3-6

*Note that there are variations in patio/balcony extents and column locations. Please see the Sales Team for more information. The developer reserves the right to make changes and modifications to the information contained herein without prior notice. Artistic renderings are representational only and may not be accurate. Sizes, dimensions, and materials are approximate and plans may be mirrored. This is not an offering for sale. Such an offering can only be made by a disclosure statement. E.&O.E. May 3, 2023.

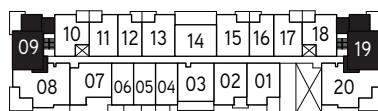


EXTENDED PATIO
IN HOME 119

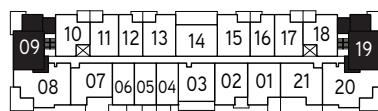


LEVEL 1

*Note that there are variations in patio/balcony extents and column locations. Please see the Sales Team for more information. The developer reserves the right to make changes and modifications to the information contained herein without prior notice. Artistic renderings are representational only and may not be accurate. Sizes, dimensions, and materials are approximate and plans may be mirrored. This is not an offering for sale. Such an offering can only be made by a disclosure statement. E.&O.E. May 3, 2023.



LEVEL 2



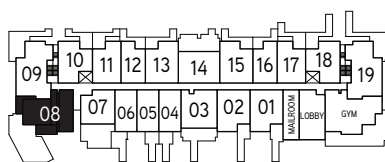
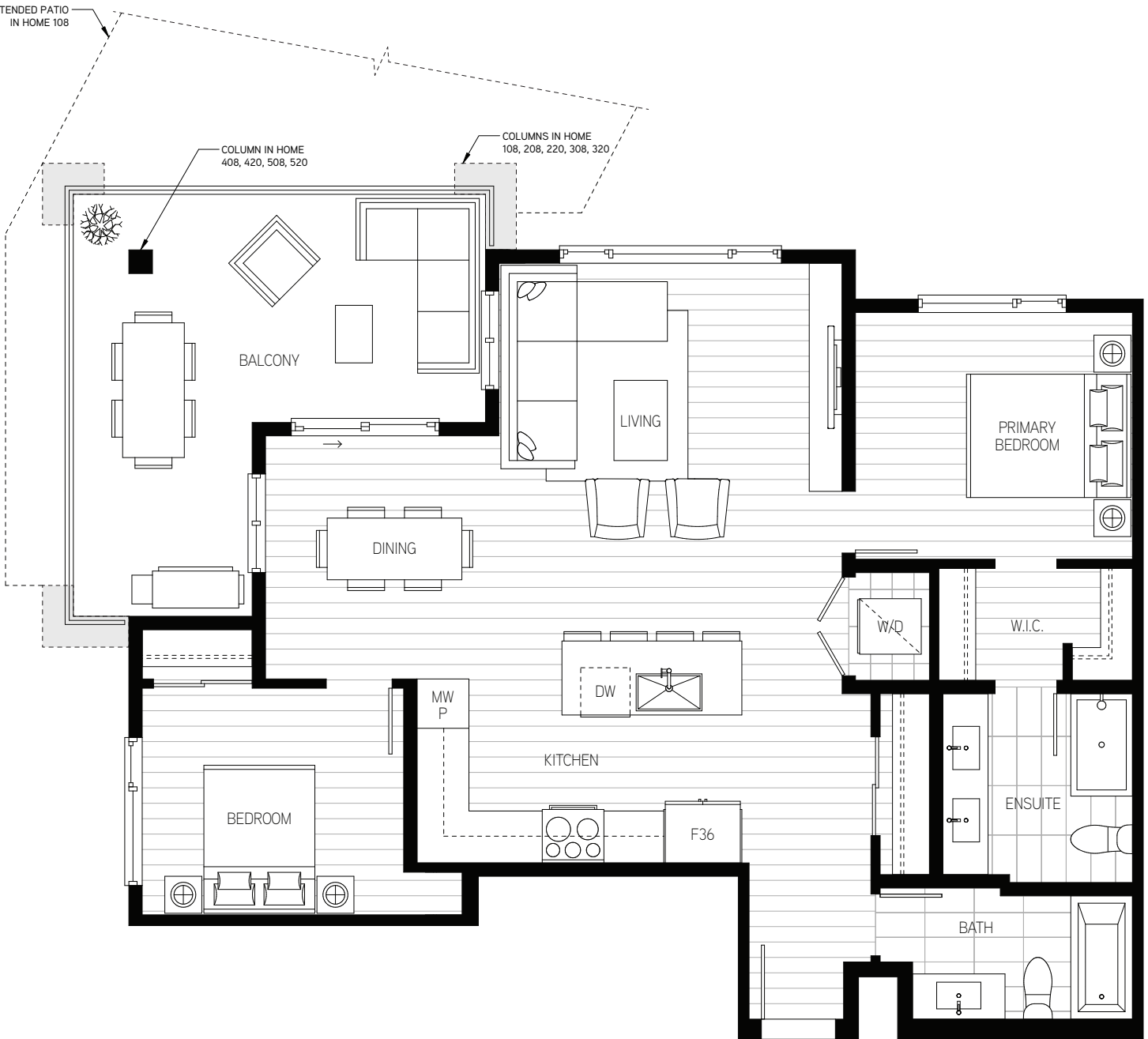
LEVEL 3-6

*Note that there are variations in patio/balcony extents and column locations. Please see the Sales Team for more information. The developer reserves the right to make changes and modifications to the information contained herein without prior notice. Artistic renderings are representational only and may not be accurate. Sizes, dimensions, and materials are approximate and plans may be mirrored. This is not an offering for sale. Such an offering can only be made by a disclosure statement. E.&O.E. May 3, 2023.

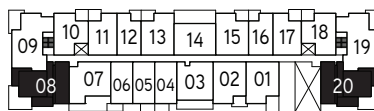
EXTENDED PATIO
IN HOME 108

COLUMN IN HOME
408, 420, 508, 520

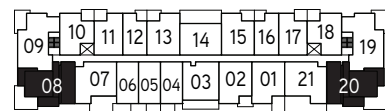
COLUMNS IN HOME
108, 208, 220, 308, 320



LEVEL 1



LEVEL 2



LEVEL 3-6

*Note that there are variations in patio/balcony extents and column locations. Please see the Sales Team for more information. The developer reserves the right to make changes and modifications to the information contained herein without prior notice. Artistic renderings are representational only and may not be accurate. Sizes, dimensions, and materials are approximate and plans may be mirrored. This is not an offering for sale. Such an offering can only be made by a disclosure statement. E.&O.E. May 3, 2023.

Interiors as fresh as the ocean air



Airy and inspired interiors

Inspired by the oceanside setting, the interiors are airy and effervescent, enhanced by broad windows that draw sunshine inside and cast a warming glow throughout your home. Fluid and functional open plans add to the sense of space, while natural finishes and organic textures complement the calm character. A spacious balcony expands your living area, adding to the indoor-outdoor experience and bringing fresh air into every moment of your day—even when you're inside.

Choose from two designer-selected colour and texture palettes, each of which complements Salt & Meadow's beach house vibe. The two-toned kitchens are modern and refined, featuring quartz countertops, a large single-bowl sink, a cool picket tile backsplash and a more sustainable electric-powered range oven. Bathrooms are equally modern, with textured porcelain tiles, glass showers and semi-floating vanities.

Features

Waterfront Location

- Located on the western point of Tsawwassen's only new waterfront community, Salt & Meadow's three mid-rise buildings celebrate the epic views of the ocean, meadow and mountains
- With one of the finest shopping destinations in Metro Vancouver moments away, it's all around you:
 - Brand-name shopping including Aritzia, Banana Republic and more at Tsawwassen Mills Shopping Centre
 - Daily conveniences at Tsawwassen Commons Shopping Centre featuring Walmart, HomeSense, Kin's Farm Market and more
 - Food options galore including Tim Hortons, COBS Bread, Wings Restaurant and more
- South Delta Recreation Centre, Tsawwassen Springs Golf Course and Beach Grove Golf Club are minutes away
- 10 minutes to the BC Ferries Terminal
- 15 minutes to the US Border Crossing
- 30 minutes to Vancouver and YVR Airport

Resort-Style Living

- Access to Boardwalk's 22,000 sq. ft. residents-only Beach House Amenity:
 - Architecturally stunning and inviting free-standing amenity building in the heart of Boardwalk
 - 10,000 sq. ft. interior features a deluxe fitness centre plus yoga/dance studio, two party rooms, a kids' zone play room, meeting room, work lab and billiards room
 - Outdoor areas include a resort-style swimming pool, hot tub, BBQ dining and lounge area, children's play area and more
- Salt & Meadow homes surround a 35,000 sq. ft. landscaped meadow park amenity, which includes an expansive lawn, outdoor dining/BBQ patio and firepit
- Fully equipped fitness centre and community garden exclusive to Salt & Meadow residents
- Miles of beach trails and a new boardwalk for morning jogs and evening strolls
- EV charger upgrade available

Modern West Coast Architecture

- Architecture by award-winning local firm, Rositch Hemphill Architects
- Private outdoor balcony for every home, with extended patios on the first floor
- Secured underground parkade with fob and key access
- Secured front lobby access with camera/interphone and restricted floor access elevator
- Best in class construction backed by New Home Warranty 2-5-10 year coverage

Thoughtful Interiors

- Your choice of two designer interior colour schemes – Beach and Ocean
- Natural laminate wood flooring throughout the homes
- Stylish and contemporary roller blinds
- ~8'6" ceilings with some drops, with ~12'6" ceilings in most 6th-floor homes (see Sales Team for details)
- Electric baseboard heating
- Full-size front-load washer and dryer
- Complimentary one-year subscription to TELUS internet and TV services on a two-year plan
- In-suite cooling upgrade available

Modern Kitchens

- Sleek two-tone kitchens with quartz countertops and a stylish oversized single undermount sink
- Stylish crayon tile backsplash
- Deluxe stainless steel dishwasher, electric stove, slim-profile slide-out range hood fan and microwave
- 28" refrigerator with twist ice maker in Plans A2, A3, B2, C1, D4 and D5
- 36" double door refrigerator with ice maker and water pitcher in Plans B1, D2, E1, E2, E3 and E4
- Contemporary under-cabinet LED lighting in the kitchen

Luxurious Bathrooms

- Contemporary laminate cabinets with quartz countertops and chrome fixtures
- Elegant floor and wall tile in the bathrooms, with a contemporary textured tile feature wall in the ensuite and main bathroom
- Classic soaker tubs in main bathrooms
- Luxurious frameless glass shower enclosures in the primary ensuite (2 bathroom homes only)

Forward-looking features and future-friendly design

Salt & Meadow is designed for today and well-prepared for the future, with features geared towards adaptability, flexibility and sustainability.

- As a part of our future-proofing initiative, Salt & Meadow is designed to have the capacity to be a 100% electric vehicle (EV) community and will offer 260+ parking stalls with EV charging capability at completion.
- Shared e-bikes will be available on-site to help make short trips more economical and environmentally friendly.
- Some visitor parking stalls will be reserved for ride-sharing and delivery drop-offs.
- Dedicated secure bike storage makes it easy to access your ride for exploring the local trails.
- A full electric appliance package means we will power our kitchens with a more sustainable source of energy.
- An optional air cooling package allows you greater control and comfort in your interior environment.
- Access to a community garden to grow your own fresh vegetables and herbs.



AQUILINI

We Build Full Circle Communities

Aquilini Development is one of Canada's pre-eminent builder-developers, synonymous with integrity, value and quality homes of the highest standard. With decades of experience and thousands of residences completed and sold, we remain steadfast in our vision to build communities that are "Full Circle". We believe all communities should be designed and built to nurture human connection, support community legacy and foster diverse living by providing access to a variety of home types and experiences.

Salt & Meadow is the next collection in Boardwalk, the second master-planned community by a partnership between Aquilini Development and a number of Tsawwassen First Nation landowners. Our first master-planned community at Tsawwassen Shores is now fully sold out and occupied with over 550 families residing there.



The Maynards Block



Coast at Tsawwassen Shores



Aquilini Centre



Peregrine at Tsawwassen Shores



Boardwalk Single-Family Homes



Seymour Village



Boardwalk Townhomes



Tsawwassen Shores

OwnBoardwalk.com

MARKETING BY
rennie

The developer reserves the right to make changes to the information contained herein without prior notice. Artistic renderings are representational only and may not be accurate. Sizes, dimensions and materials are approximate, and plans may be mirrored. This is not an offering for sale. Such an offering can only be made by a disclosure statement. E.&O.E. April 20, 2023.