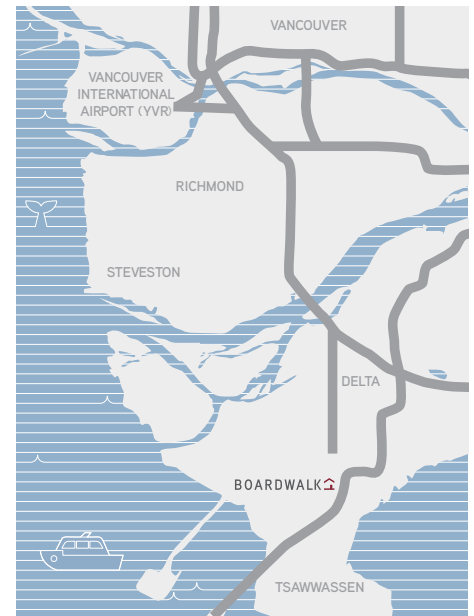
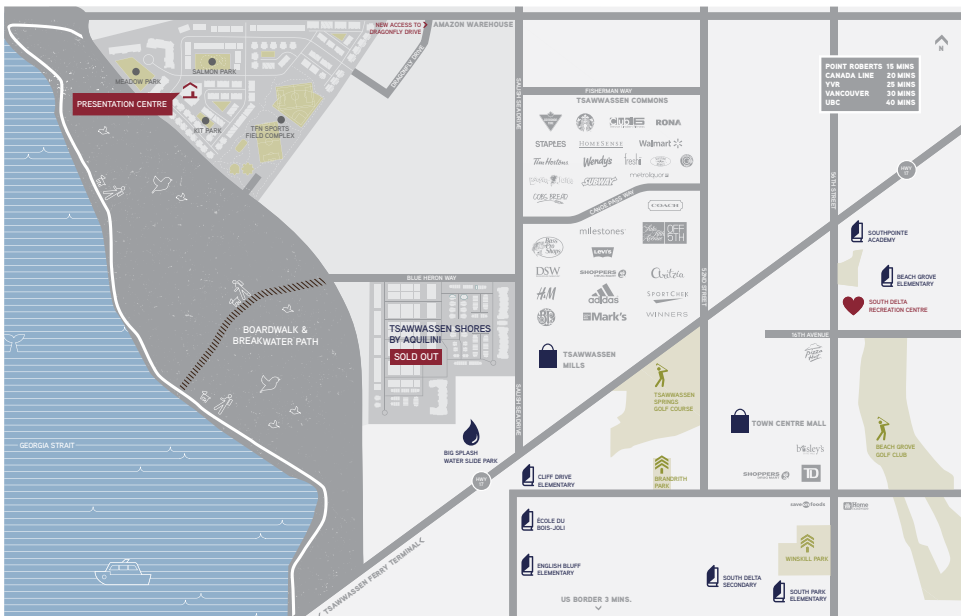


BOARDWALK 16

PARKSIDE
TOWNHOMES

AN URBAN AESTHETIC IN A SPECTACULAR OCEANSIDE SETTING.



BE THERE IN LESS THAN ONE MINUTE

The Beach House will be many things to you and your family: room to stretch out, a venue to host celebrations, an oasis for your staycation. Your gym, yoga studio, office, party room, playroom, backyard pool, and - perhaps most importantly—your community hub. Though you'll be able to reserve portions of the smartly designed space for special occasions and private gatherings, the spirit of the Beach House will be one of sharing: an indoor-outdoor gathering place, exclusively for those lucky enough to call Boardwalk home.



MEETING ROOM

Multi-purpose use, including private tutoring and studying

GRAND LOBBY

Welcome guests with a large waiting lounge

GAMES ROOM

Challenge your best mate to a game of pool or table tennis

WEST PARTY ROOM

Large enough for holiday gatherings with all your people

OUTDOOR LOUNGE

Plenty of cozy breakout areas for great conversations

THERAPEUTIC HOT TUB

Relax after a long day, or recover from tired muscles

OUTDOOR KIDS ZONE

A deluxe playground set-up and extra room to run

CHANGE ROOMS

Shower facilities for pre- and post-pool time and workouts

BIKE & DOG WASH

Keep the mud outside your home with this convenient wash station

EAST PARTY ROOM

Offers a cozier vibe for more intimate gatherings

GRILL STATION

Features two large barbeques for fast and healthy cooking

RESORT POOL & DECK

Perfect for hot summer days and fresh ocean breezes

INDOOR KIDS ZONE

Visual access from the Fitness Centre for multi-tasking parents

FITNESS CENTRE

Fully equipped with brand-new cardio and weight equipment

YOGA/DANCE STUDIO

For private or group sessions

WORK LAB

Tech-enabled workspace for home-based consultants, freelancers, and students



SALMON PARK

Salmon Park is a 1-acre park located in the heart of Boardwalk across the street from the Beach House. The design of the park is inspired by the mighty salmon, which are valued and respected by Tsawwassen First Nation.

Here, the kids can play on the outdoor play structures, featuring climbing domes inspired by the shape of salmon roe. There's ample space for adults too with bench seating areas and a large lawn for picnics and relaxing in the sun.



KIT PARK

Nestled beside the Beach House and connected to Rabbit Drive lies Kit Park, a charming family-friendly haven.

At its heart, a thoughtfully designed children's play area artfully weaves natural elements into its design, creating a space that is as beautiful as it is playful. Keep an eye out, and you might just spot a baby rabbit.

EXCLUSIVE PARKSIDE HOMES

BOARDWALK6 IS A LIMITED COLLECTION OF SPACIOUS TOWNHOMES WITH AN EXCLUSIVE PARKSIDE LOCATION. ALL BOARDWALK6 HOMES ARE STEPS TO SALMON PARK, WITH SOME OVERLOOKING THE TRANQUIL GREEN SPACE.



TOWNHOME COLLECTION

OUR TOWNHOMES ARE ALL ABOUT THOUGHTFUL DESIGN—USING EVERY SQUARE FOOT TO BEST SUIT THE NEEDS OF THE MODERN FAMILY.



TOWNHOME

PLAN A-alt

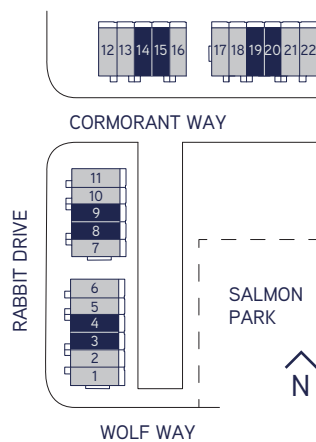
3 BED + 2.5 BATH · TOTAL 1,286 SQ FT



GROUND FLOOR

MAIN FLOOR

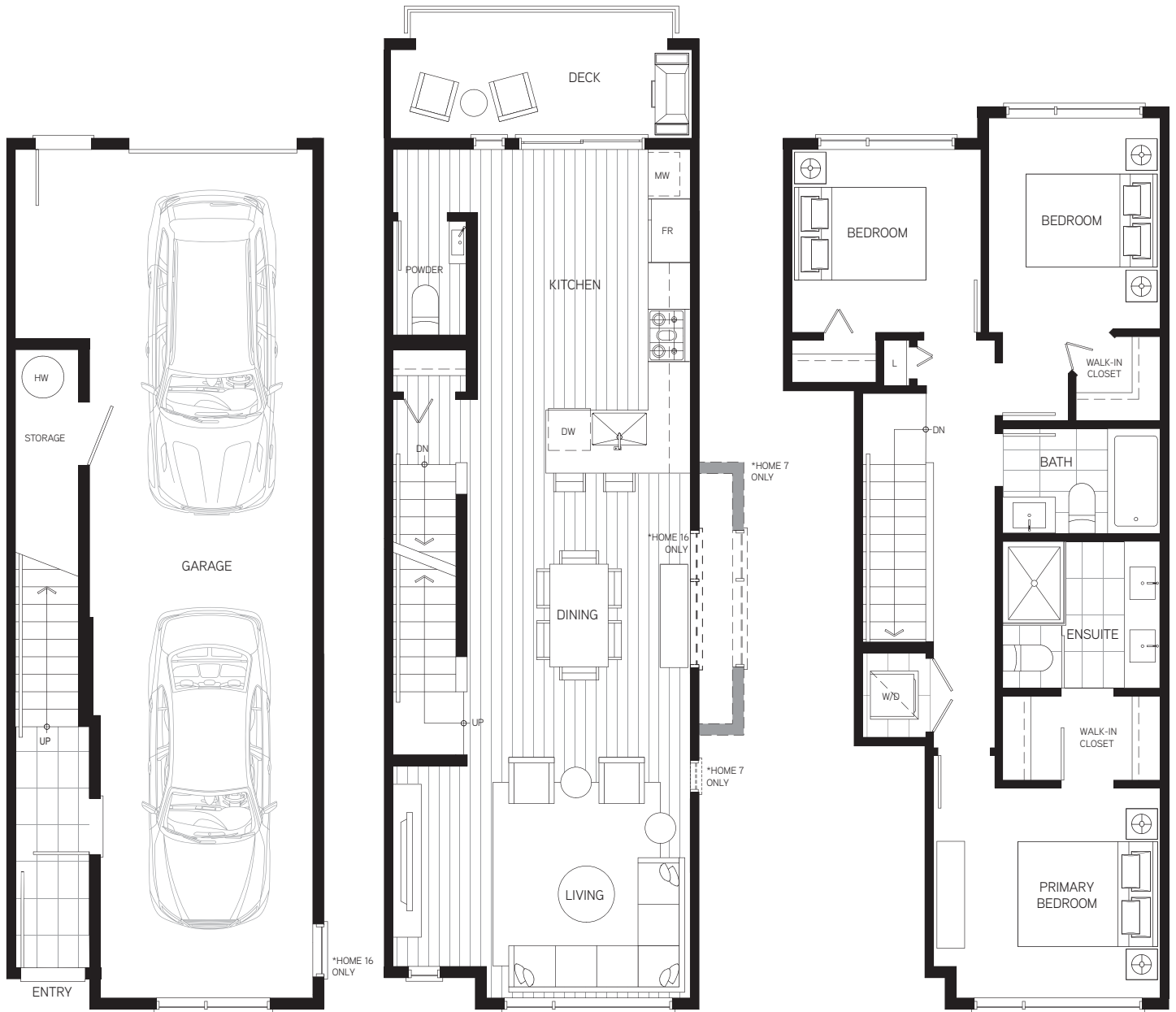
UPPER FLOOR



TOWNHOME

PLAN B-alt / B1-alt / B2-alt

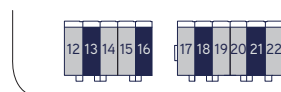
3 BED + 2.5 BATH · TOTAL 1,288-1,302 SQ FT



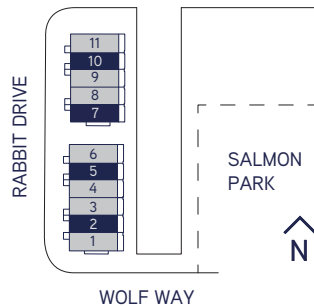
GROUND FLOOR

MAIN FLOOR

UPPER FLOOR



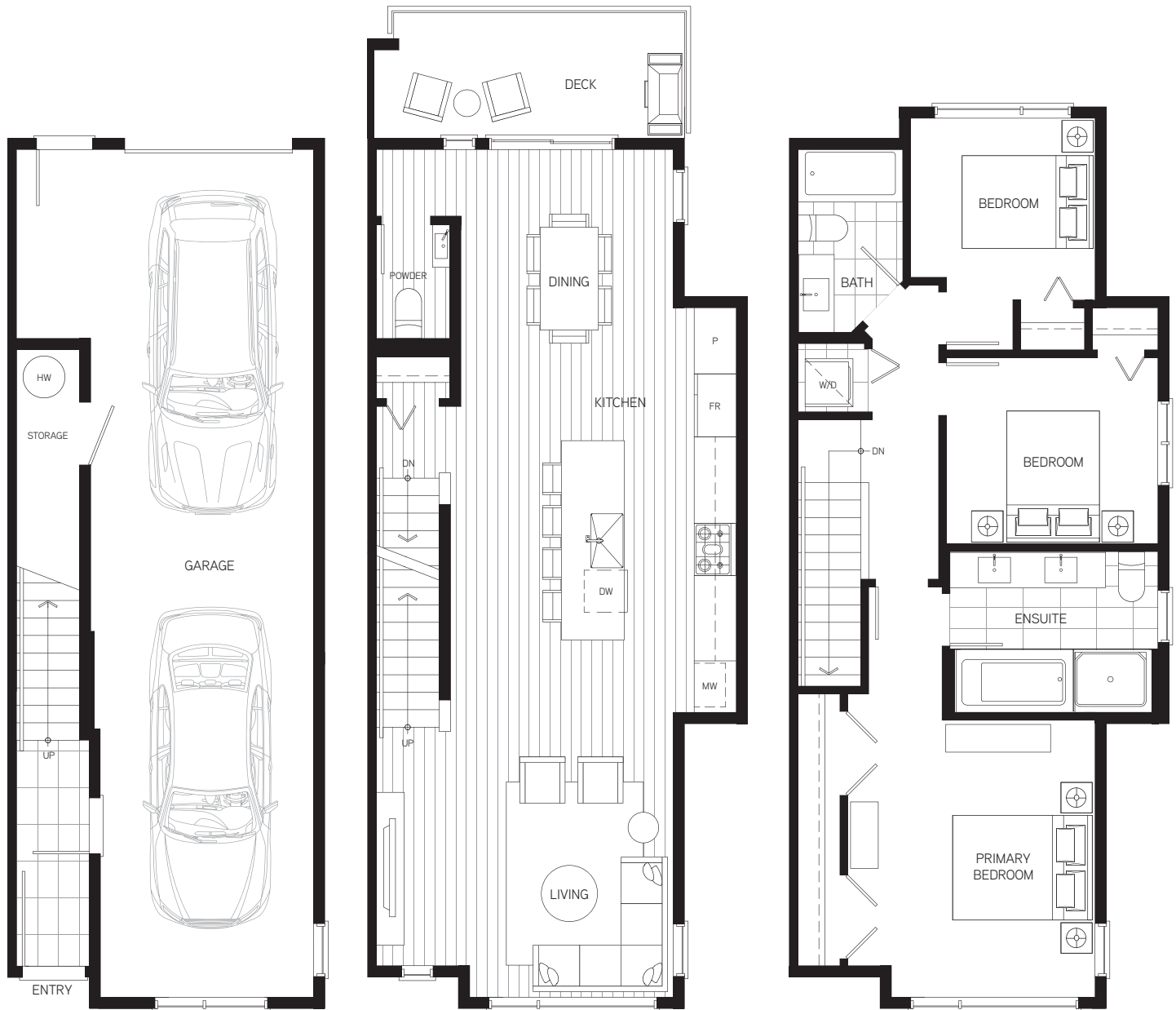
CORMORANT WAY



TOWNHOME

PLAN C-alt

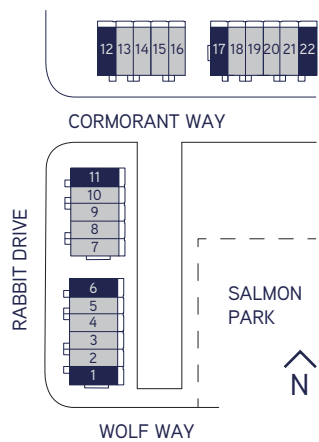
3 BED + 2.5 BATH · TOTAL 1,392 SQ FT



GROUND FLOOR

MAIN FLOOR

UPPER FLOOR



INSIDE YOUR TOWNHOME

THE CLASSIC SERIES IS CLASSIC IN NAME ONLY.

WE FOCUSED ON HOW TODAY'S FAMILIES LIVE, AND DESIGNED THESE HIGH-VALUE SPACES ACCORDINGLY.



LIGHT SCHEME

The Light scheme features bright white kitchen cabinets with a clean white vertical tile backsplash. Cool grey oak laminate flooring adds to the contemporary design, with light ash vanities and pewter floor tiles in full bathrooms.

DARK SCHEME

The Dark scheme features gunmetal grey kitchen cabinets complemented by a clean white vertical tile backsplash. Cool grey oak laminate flooring adds to the contemporary design, with light biscotti vanities and dark grey floor tiles in full bathrooms.

FEATURING:

- Built with the affordable luxury of natural gas
- Deluxe modern kitchen with gas range and stainless steel appliance package including refrigerator, dishwasher, and slide-out hood fan
- Modern vertical stacked tile backsplash and white quartz countertop in kitchen
- Durable laminate wood flooring on main living level with carpets on bedroom level
- Semi-floating vanities and plenty of counter space in bathrooms
- Bedroom-level stacked full-size washer/dryer
- Contemporary roller shades for windows

- Private attached 2 car garage
- Private patio deck with natural gas BBQ connection
- Access to the Boardwalk Beach House amenity and pool
- Natural gas tankless water heater providing an endless supply of hot water
- Optional upgrades such as laminate flooring throughout, an EV car charger, cooling, and upgraded appliance package
- Need more from your home? Ask about the Architect Series 2.0 Enhancement Package



WE BUILD FULL CIRCLE COMMUNITIES

Aquilini Development is one of Canada’s pre-eminent builder-developers, synonymous with integrity, value, and quality homes of the highest standard. With decades of experience and thousands of residences completed and sold, we remain steadfast in our vision to build communities that are “Full Circle”. We believe all communities should be designed and built to nurture human connection, support community legacy, and foster diverse living by providing access to a variety of home types and experiences.

Boardwalk is the second master-planned community by a partnership between Aquilini Development and a number of Tsawwassen First Nation landowners. Our first master-planned community at Tsawwassen Shores is fully sold out and occupied with over 550 families residing there.



TSAWWASSEN SHORES | TSAWWASSEN



SEYMOUR VILLAGE | NORTH VANCOUVER



SANTA FE | VANCOUVER



THE MAYNARDS BLOCK | VANCOUVER



OWNBOARDWALK.COM 604.306.2226

The developer reserves the right to make changes and modifications to the information contained herein without prior notice. Artistic renderings are representational only and may not be accurate. Sizes, dimensions, and materials are approximate and plans may be mirrored. There may be variations of position of front entry and/or garage in some homes. Square footage does not include garage. This is not an offering for sale. Such an offering can be made by a disclosure statement. E.&O.E.
August 1, 2023

MARKETING BY
AQUILINI **rennie**