

URBAN AMENITIES with MOUNTAIN LIVING



MILAGRO

SQUAMISH BC



DEVELOPMENT BY
**MEGADEX INTERNATIONAL
INVESTMENTS (SQUAMISH)
CORPORATION**

SALES + MARKETING BY

RE/MAX
SEA TO SKY
REAL ESTATE

RE/MAX
CREST | MASTERS
Member of the RE/MAX Franchise Group

CONSTRUCTION BY:

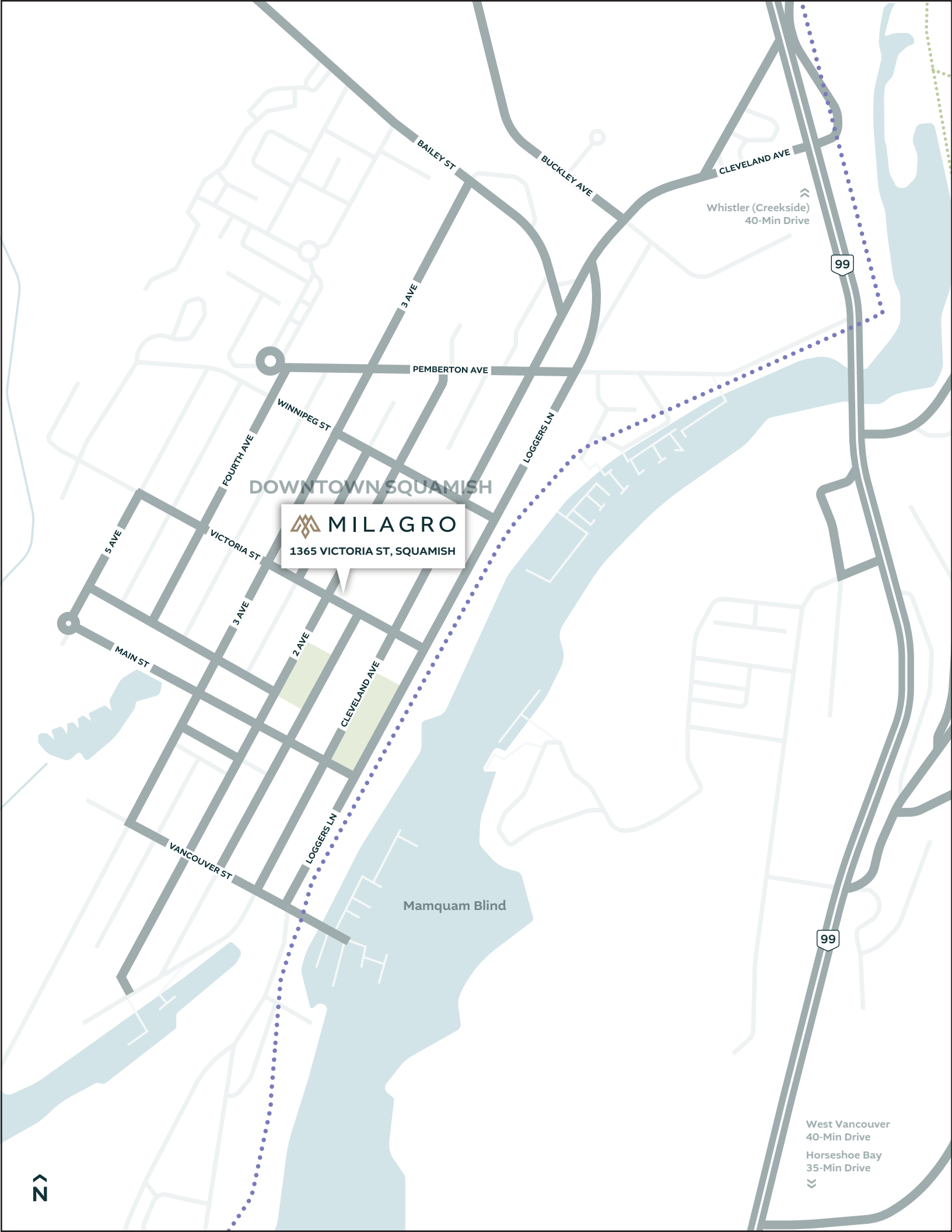
 **kerkhoff**[®]
DEVELOP • BUILD

RESIDENTIAL CONDO UNITS LOCATED IN DOWNTOWN SQUAMISH



Discover Milagro, A boutique collection of tastefully appointed 1-, 2- and 3-bedroom residences in the heart of Downtown Squamish, BC. This 6-story building offers spacious suites, with premium finishes and panoramic views of the majestic scenery. Urban amenities and recreation are at your doorstep.





DOWNTOWN SQUAMISH

 **MILAGRO**
1365 VICTORIA ST, SQUAMISH

Whistler (Creekside)
40-Min Drive

99

Mamquam Blind

99

West Vancouver
40-Min Drive
Horseshoe Bay
35-Min Drive



FEATURES + FINISHES

LIVE THE MOUNTAIN LIFESTYLE IN DOWNTOWN SQUAMISH

- A boutique six-storey collection of tastefully appointed 1-, 2- and 3-bedroom residences in the heart of Squamish
- Urban amenities and endless outdoor recreation at your doorstep: hiking, skiing, sledding, climbing, kayaking, fishing and more
- Spacious windows frame panoramic views of the majestic mountain scenery
- Exterior balconies offer fresh air and enhance your indoor-outdoor lifestyle
- Oversized secure storage units on every floor provide generous space for your recreation gear
- Three retail storefronts at ground-level offer convenient services close to home
- Designed by award-winning AKA Architecture + Design, specialists in the Sea to Sky Corridor

INVITING INTERIORS

- Tailor your home with a choice of two designer selected colour palettes: Urban or Orchard
- Wide-plank laminate flooring throughout the main living areas and bedrooms creates a natural tone
- High quality Luminosa lighting package for vibrant and inviting spaces
- Window blinds offer privacy and control over the interior environment
- Contemporary baseboard and window/door trim package
- Featuring 9' ceiling on 6th floor to maximize breathtaking view
- Stacked, front-loading washer-dryer, Energy Star rated

COOK-FRIENDLY KITCHENS

- Contemporary flat-panel laminate cabinetry
- Modern and refined quartz countertops with complementary tile backsplash
- Double-basin undercounter stainless steel sink
- Gourmet stainless steel Whirlpool appliance package
- 30" electric slide-in range with ceramic cook top
- 18.5-cubic-foot bottom-freezer refrigerator, Energy Star rated
- High quality whisper-quiet dishwasher, Energy Star rated

CALMING BATHROOMS

- Generous flat-panel vanity with just the right amount of storage
- Sleek tile flooring
- Designer-selected plumbing fixtures, including polished chrome faucets and shower heads
- Modern and matching tub and shower surrounds

OPTIONAL UPGRADES

- NEST system for convenient control over your thermostat, doorbell and lock
- Nuheat floor heating system in the master bedroom for warmth on cool days
- Climate-controlled wine fridge to store your favourite vintages
- Under-cabinet lighting to create the ideal ambiance
- Built-in closet organizer in the master bedroom

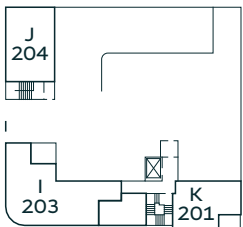
PEACE OF MIND

- 2-5-10 year warranty
- Sustainable and energy efficient design integrated into the building and homes

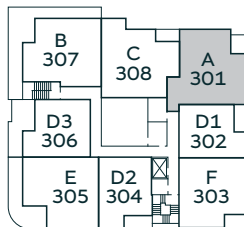
* Project specifications subject to change at the developer's discretion as detailed in the Contract of Purchase and Sale and Disclosure Statement and subsequent amendments.

A

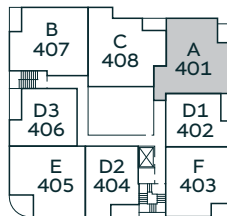
2 BEDROOM + FLEX
 2 BATHROOM
 1,024 SQ FT



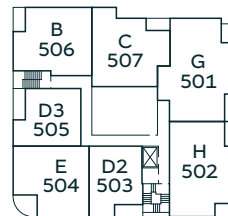
Level 2



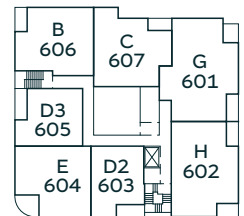
Level 3



Level 4



Level 5

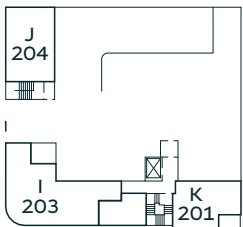
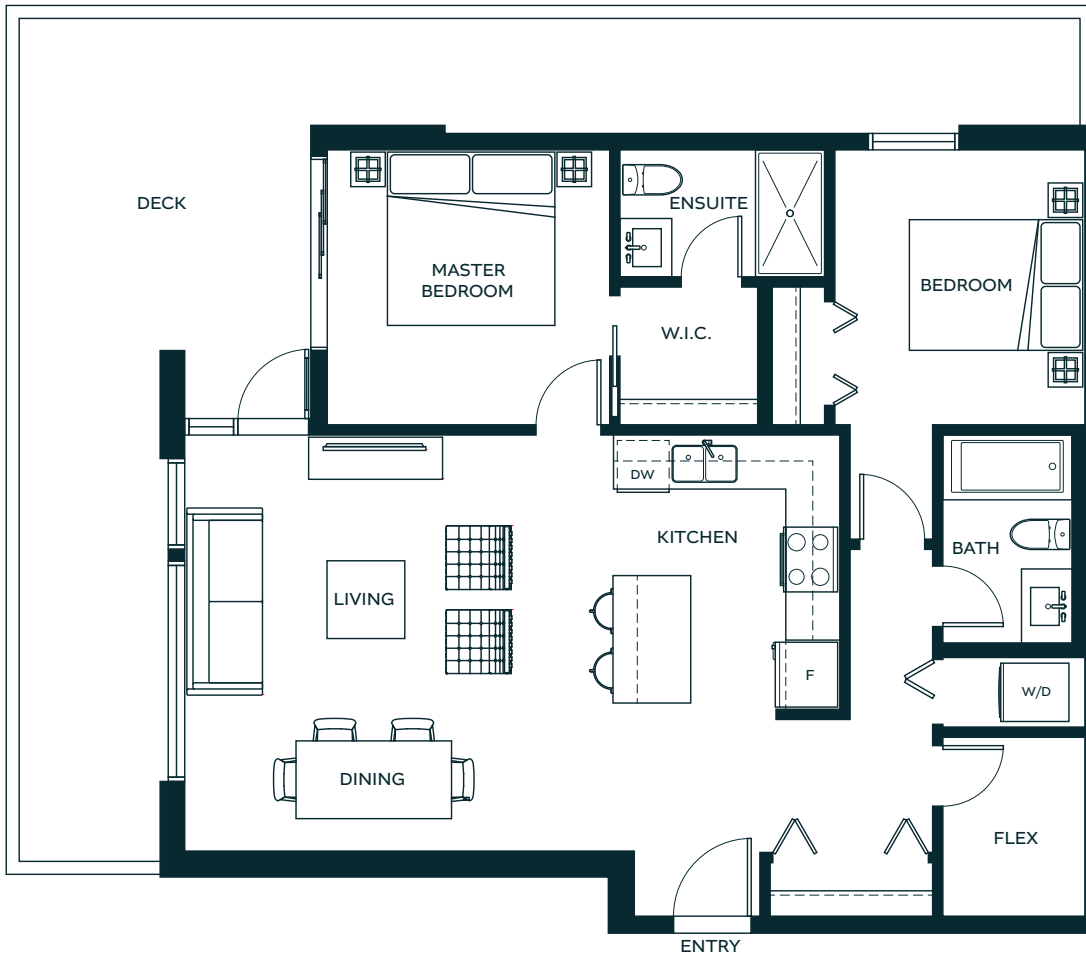


Level 6

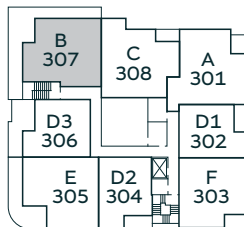


B

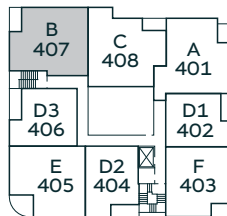
2 BEDROOM + FLEX
2 BATHROOM
994 SQ FT



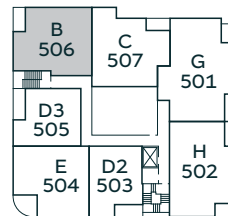
Level 2



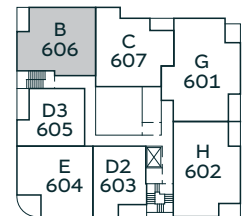
Level 3



Level 4



Level 5

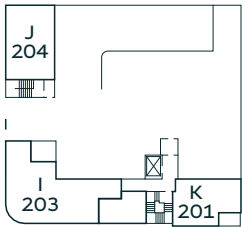
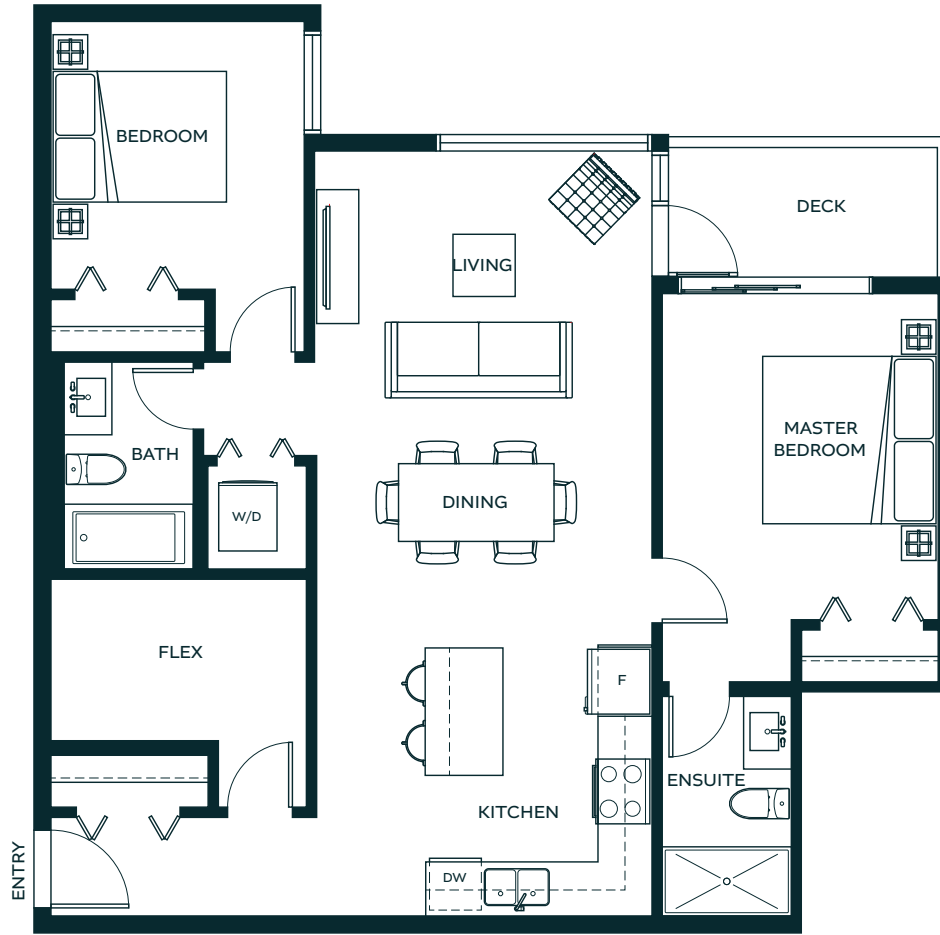


Level 6

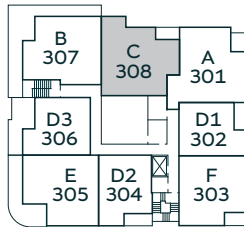


C

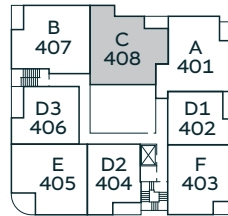
2 BEDROOM + FLEX
2 BATHROOM
1,013 SQ FT



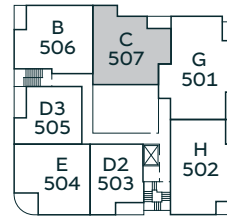
Level 2



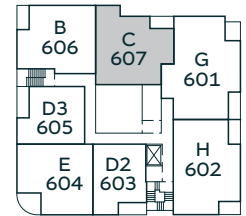
Level 3



Level 4



Level 5

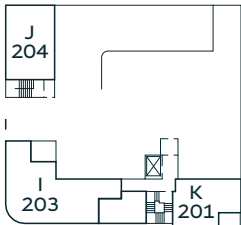
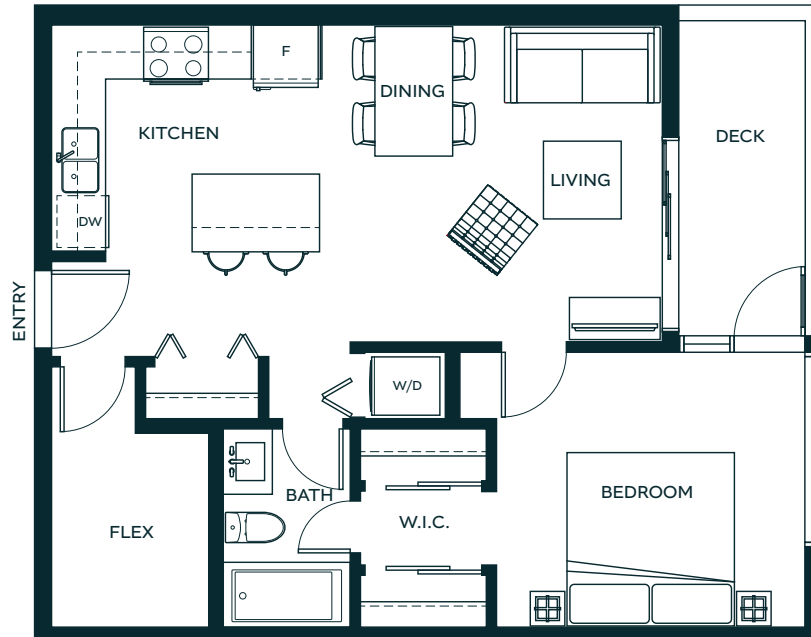


Level 6

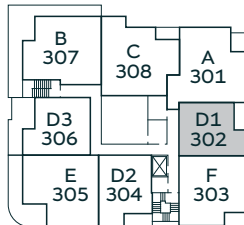


D1

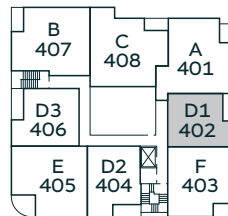
1 BEDROOM + FLEX
1 BATHROOM
654 SQ FT



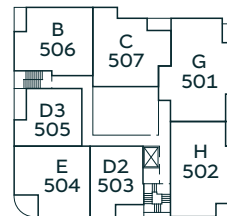
Level 2



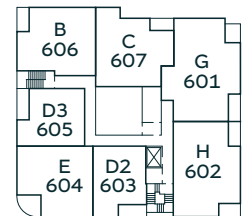
Level 3



Level 4



Level 5

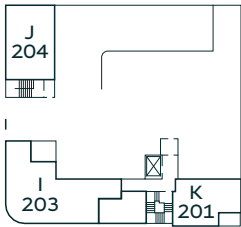
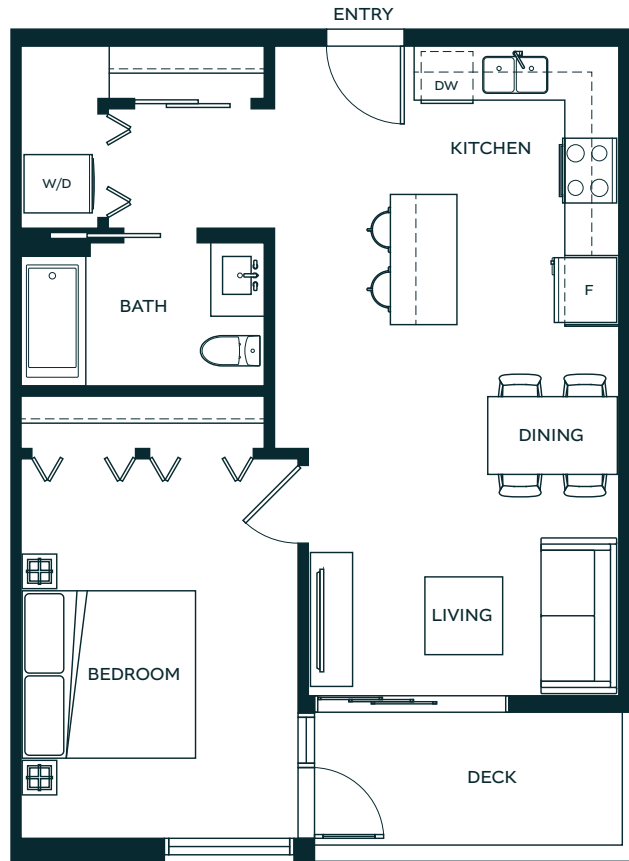


Level 6

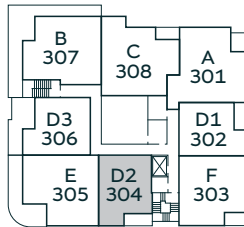


D2

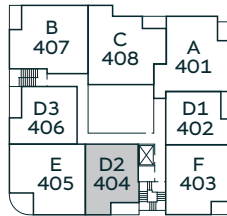
1 BEDROOM
1 BATHROOM
687 SQ FT



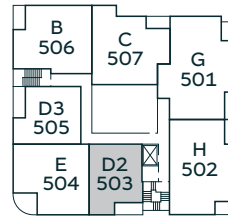
Level 2



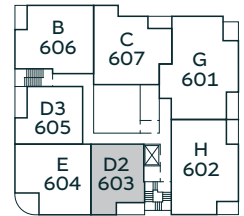
Level 3



Level 4



Level 5

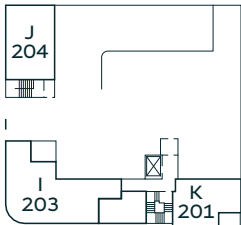
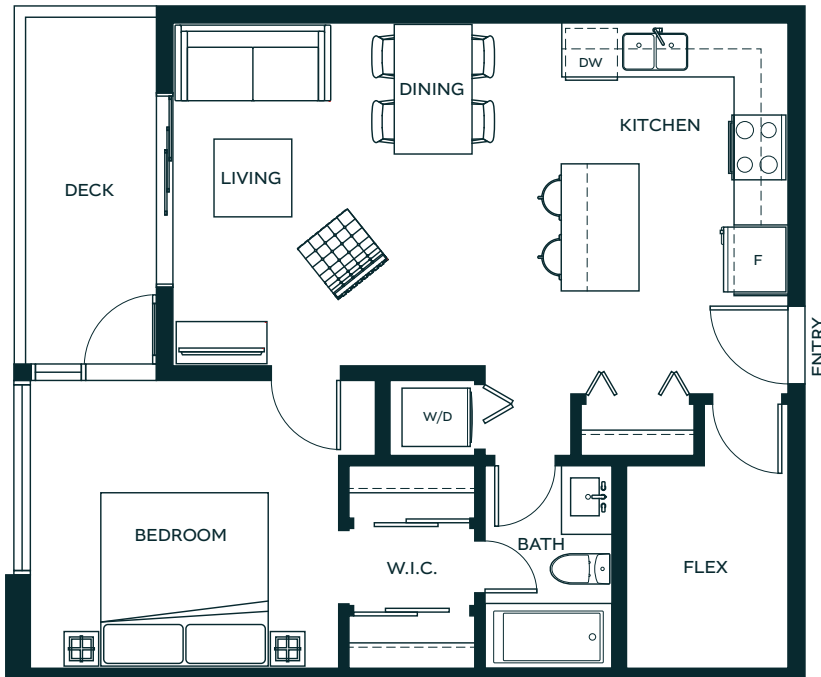


Level 6

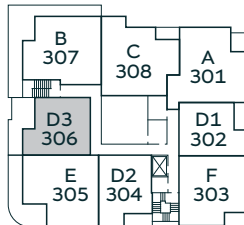


D3

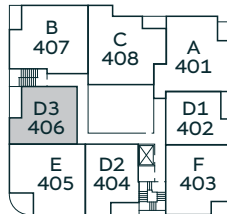
1 BEDROOM + FLEX
1 BATHROOM
705 SQ FT



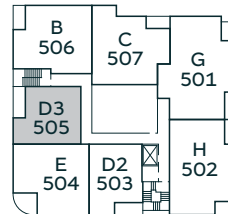
Level 2



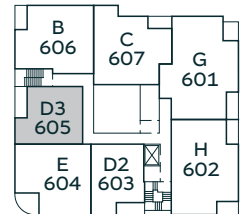
Level 3



Level 4



Level 5

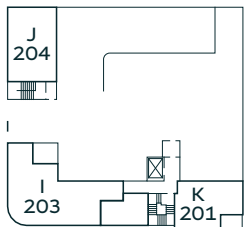
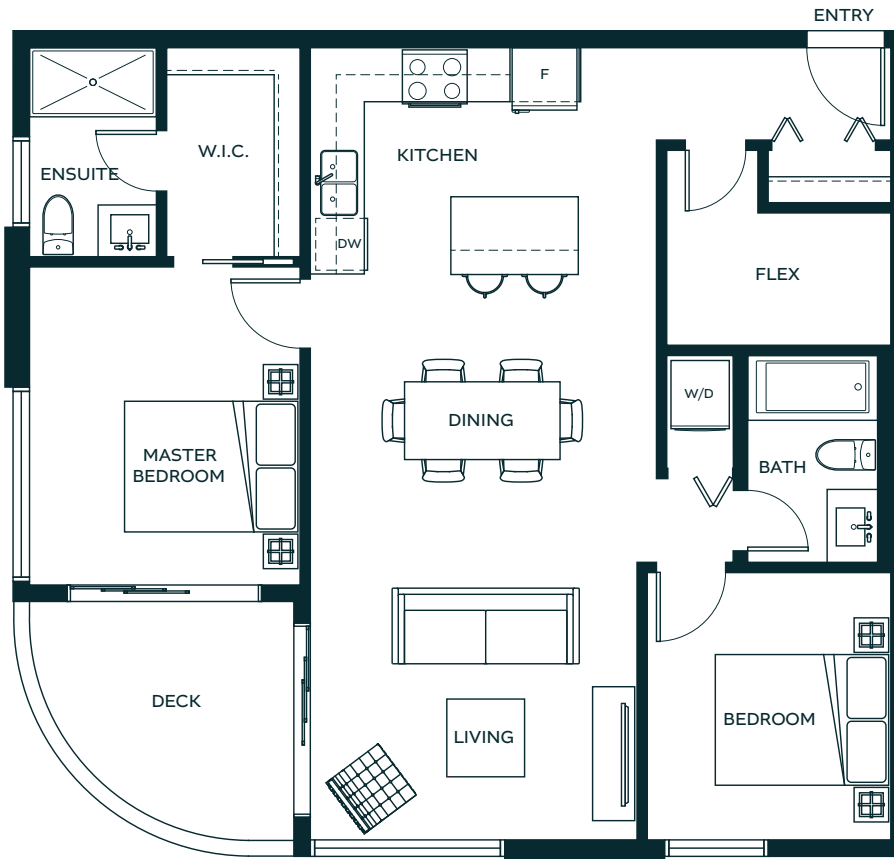


Level 6

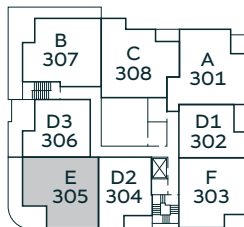


E

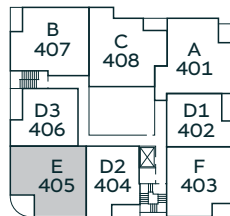
2 BEDROOM + FLEX
2 BATHROOM
970 SQ FT



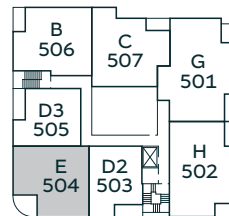
Level 2



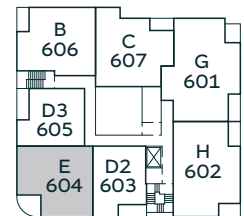
Level 3



Level 4



Level 5

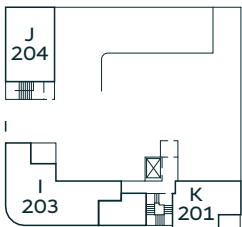


Level 6

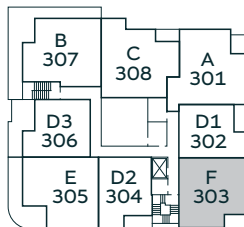


F

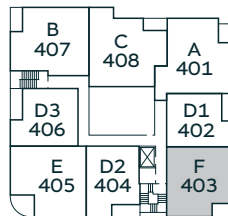
2 BEDROOM + FLEX
 2 BATHROOM
 892 SQ FT



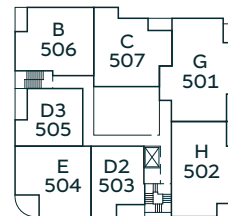
Level 2



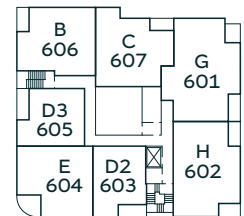
Level 3



Level 4



Level 5

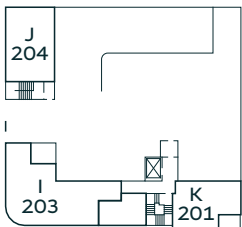
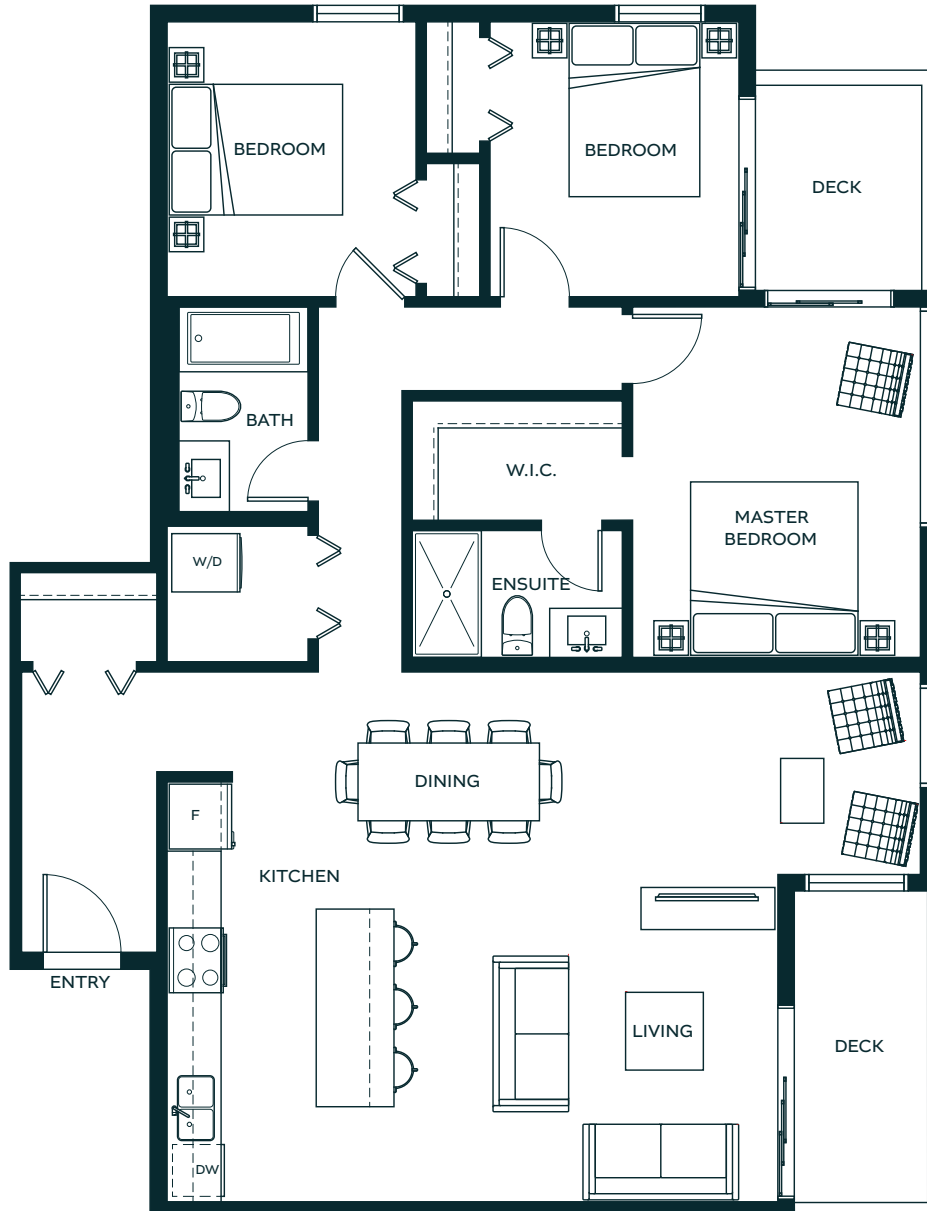


Level 6

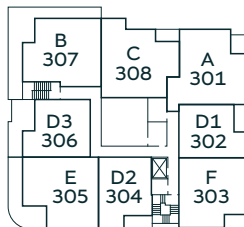


G

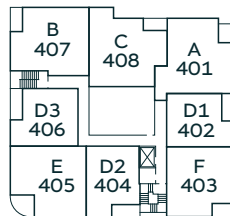
3 BEDROOM + FLEX
2 BATHROOM
1,337 SQ FT



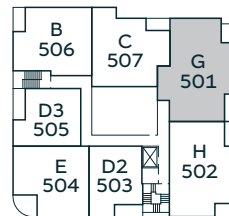
Level 2



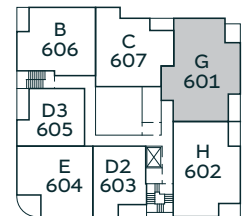
Level 3



Level 4



Level 5

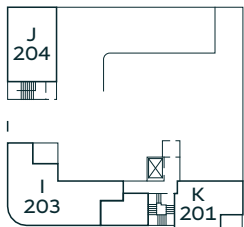
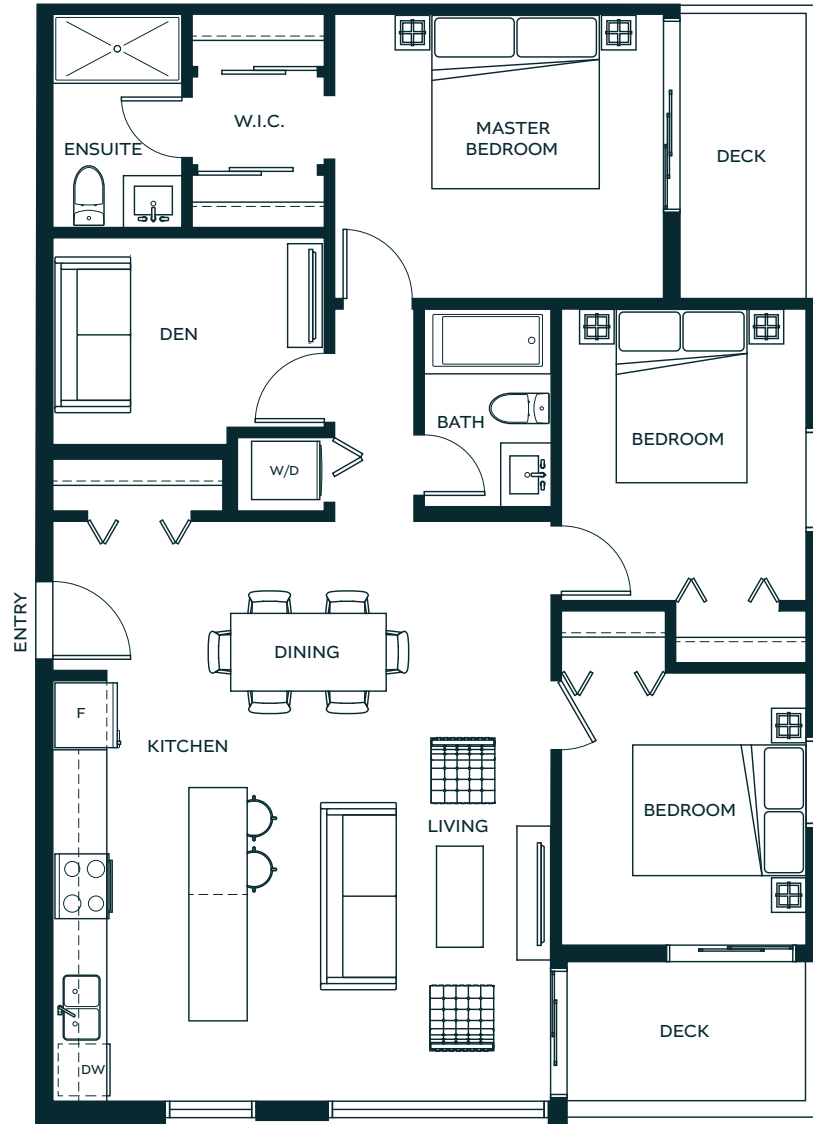


Level 6

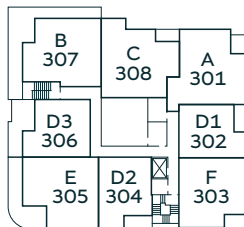


H

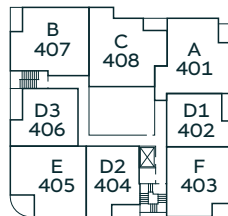
3 BEDROOM + DEN
2 BATHROOM
1,174 SQ FT



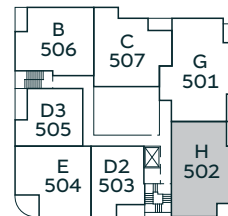
Level 2



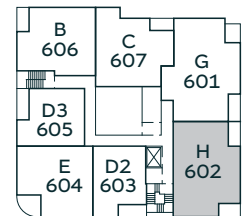
Level 3



Level 4



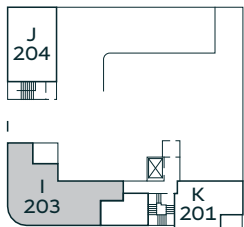
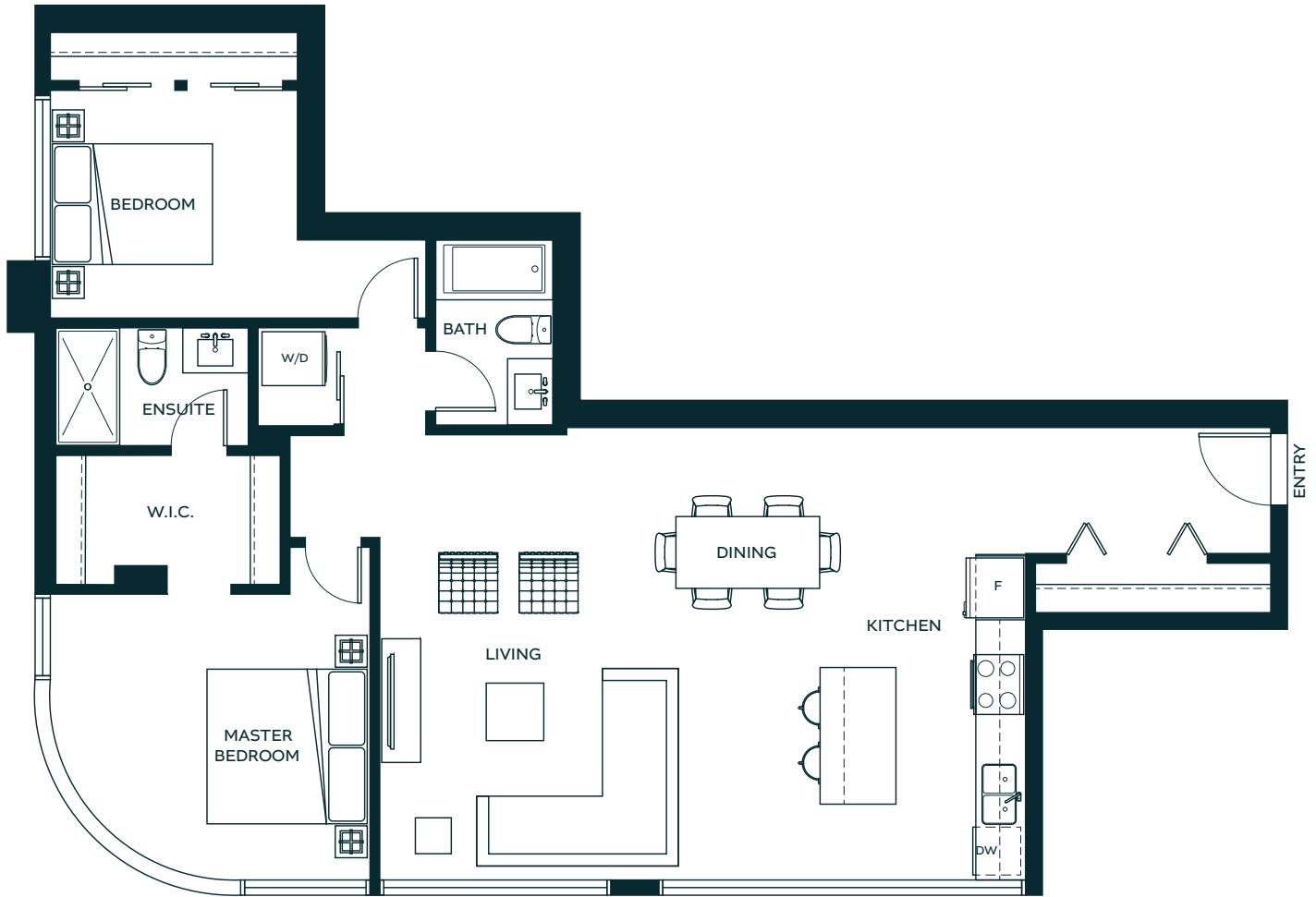
Level 5



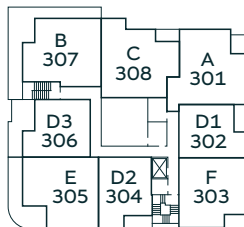
Level 6



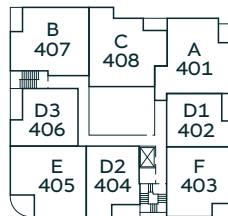
2 BEDROOM
 2 BATHROOM
 1,207 SQ FT



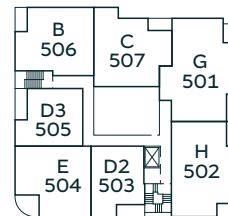
Level 2



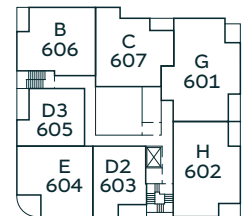
Level 3



Level 4



Level 5

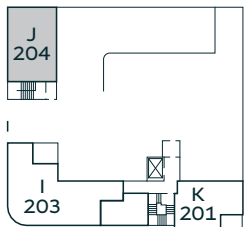
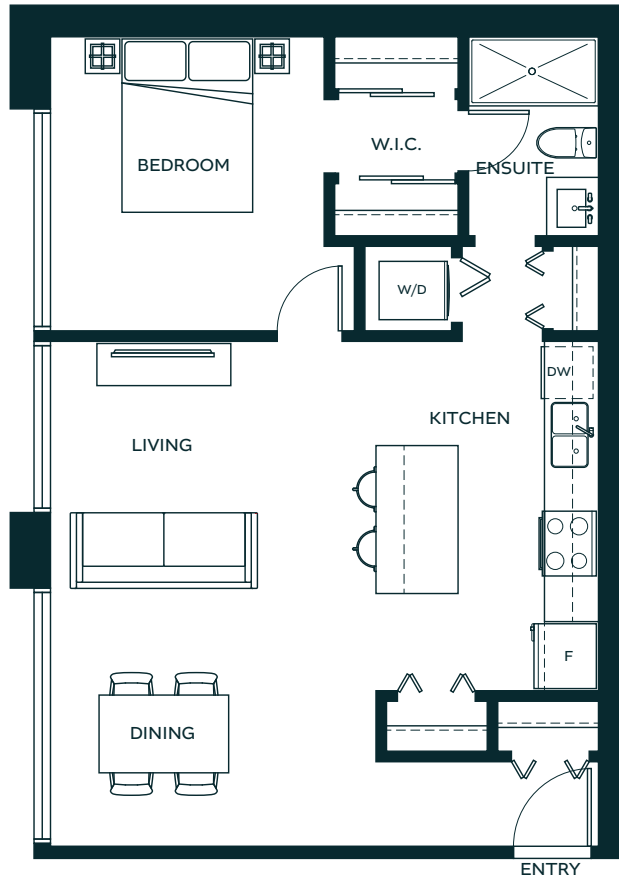


Level 6

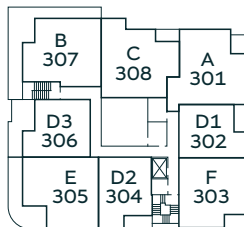


J

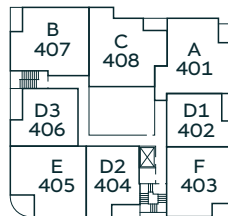
1 BEDROOM
1 BATHROOM
747 SQ FT



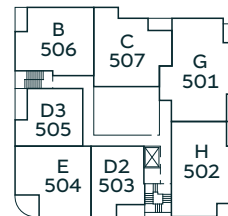
Level 2



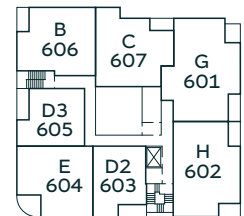
Level 3



Level 4



Level 5

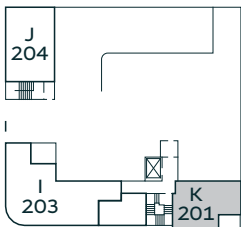
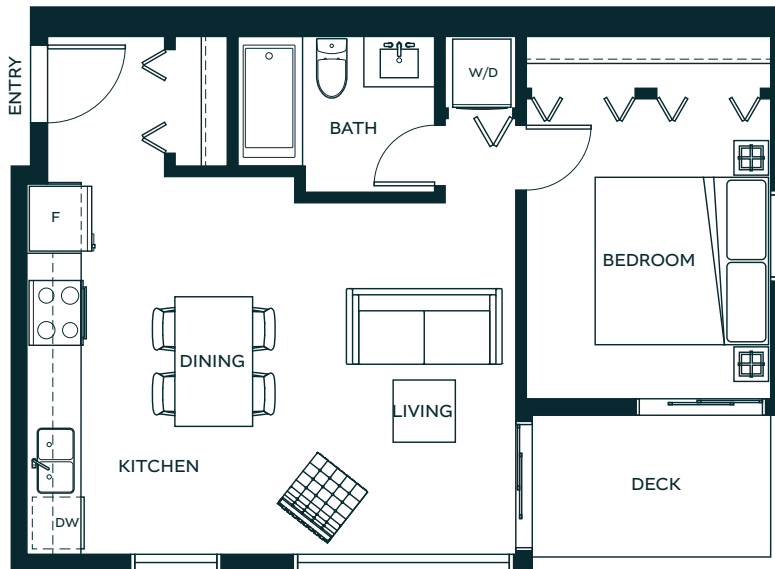


Level 6

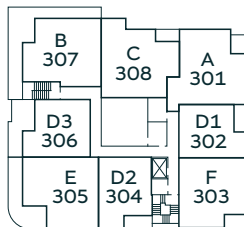


K

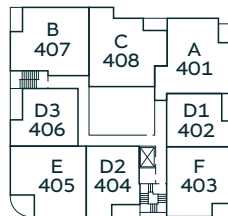
1 BEDROOM
1 BATHROOM
573 SQ FT



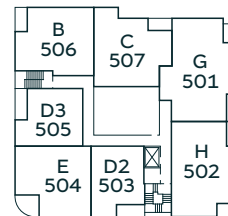
Level 2



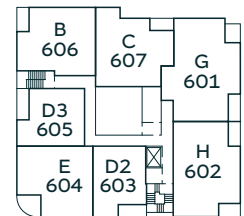
Level 3



Level 4



Level 5



Level 6





MILAGRO

SQUAMISH BC

DARREN MCCARTNEY PREC

RE/MAX Sea to Sky Real Estate
38261 Cleveland Avenue,
Squamish, BC, V8B 0A6
e: Darren.mc@shaw.ca
p: 604-892-4875

ORAZIO SCALDAFERRI

RE/MAX Masters Realty
200 – 1455 Bellevue Avenue,
West Vancouver, BC, V7T 1C3
e: orazio.scaldaferri@gmail.com
p: 604-351-6088

MILAGROLIVING.CA