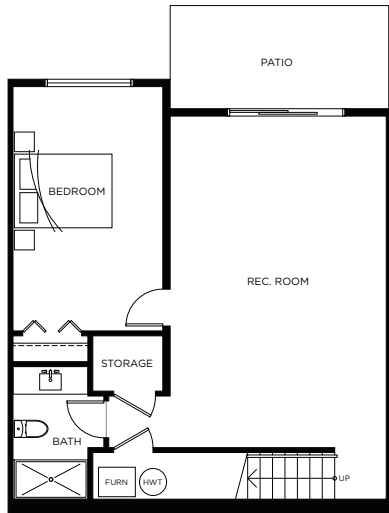


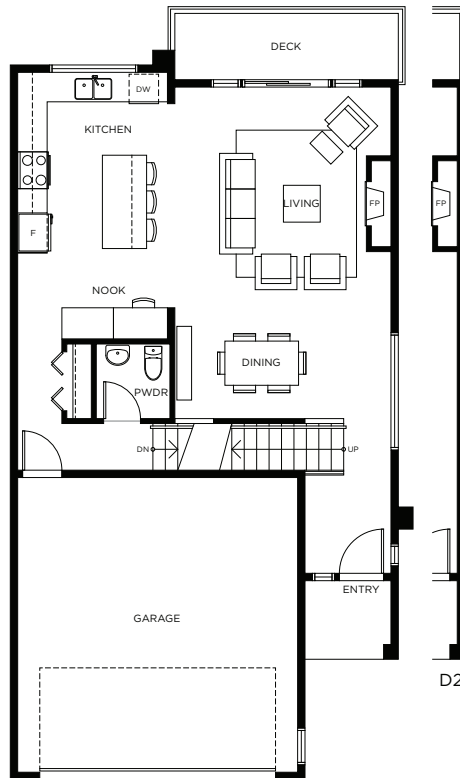
PLAN D3/D2

4 Bedroom, 3.5 Bath

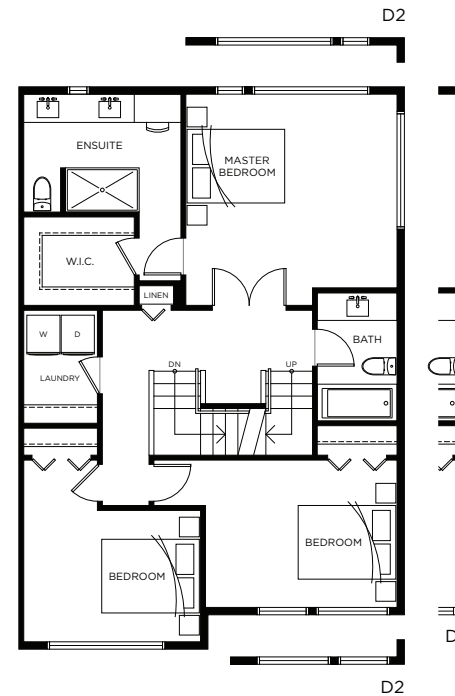
2,458 sf – 2,470 sf



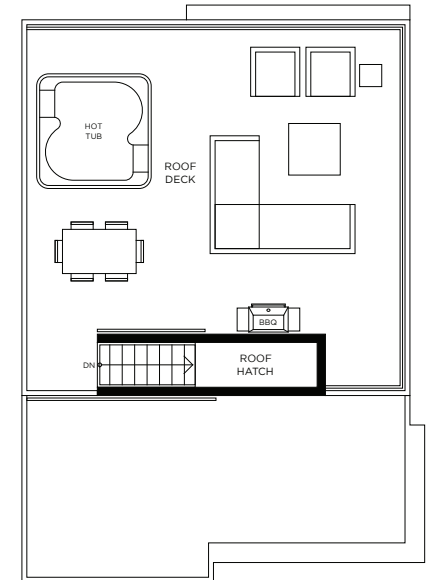
Basement Level



Main Level



Upper Level



Roof Level



www.ShelterBayLiving.ca

Basement	737 sf
Main Floor	760 – 765 sf
Upper Floor	962 – 968 sf
TOTAL	2,458 – 2,470 sf
Roof Deck	599 – 603 sf