

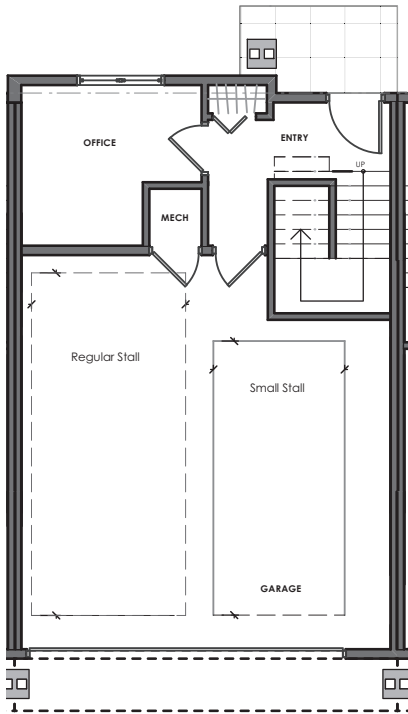
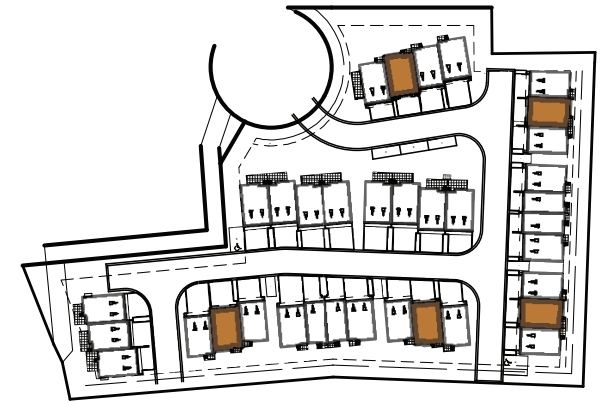


BOULDER (B1-A)

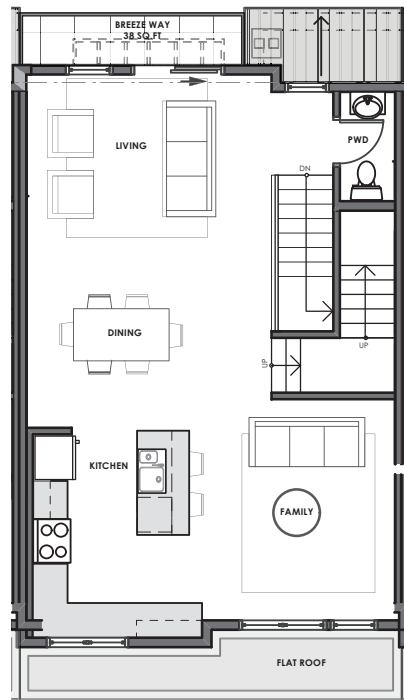
Homes #102, #106, #113, #116 #123

3-BEDROOM, 3-BATHROOM
2 CAR GARAGE: SIDE-BY-SIDE

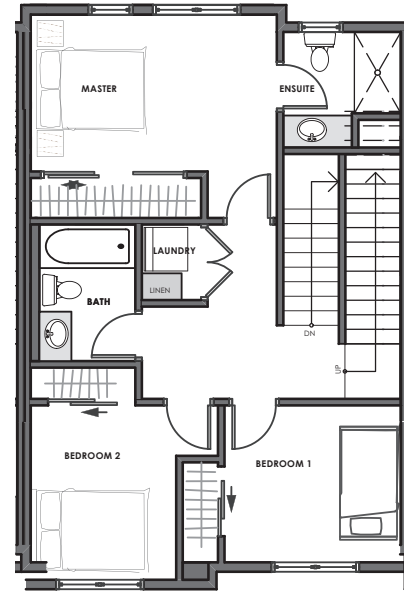
Total Interior: 1,482 Sq.Ft*
Total Exterior: 482 Sq.Ft*
Total Living: 1,964 Sq.Ft*



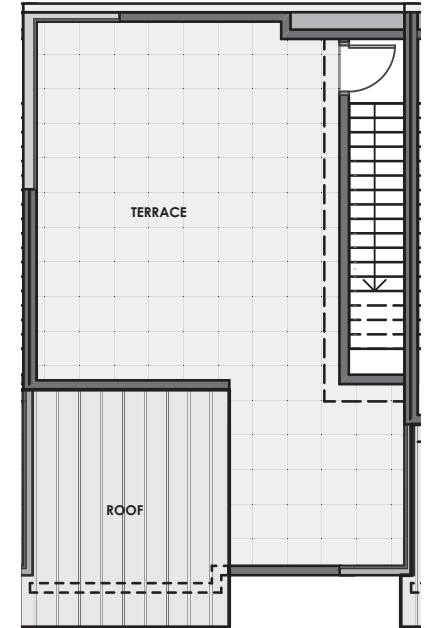
248 SQ.FT*



610 SQ.FT*



624 SQ.FT*



444 SQ.FT*

THE PEAKS

— KELOWNA, BC —

Nyrose and Associates
778-200-5634



RE/MAX
Kelowna

thepeaksliving.ca

Developer reserves the right to make changes and modifications to size and specifications. Final design, construction, and features may differ. This is not an offering for sale. Any such offerings may only be made with a Disclosure Statement. E.&O.E. Sales & Marketing by DNA Project Marketing and Nyrose & Associates | RE/MAX Kelowna.

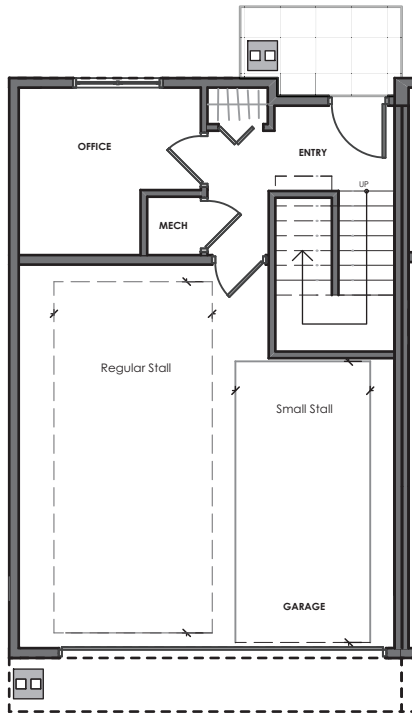
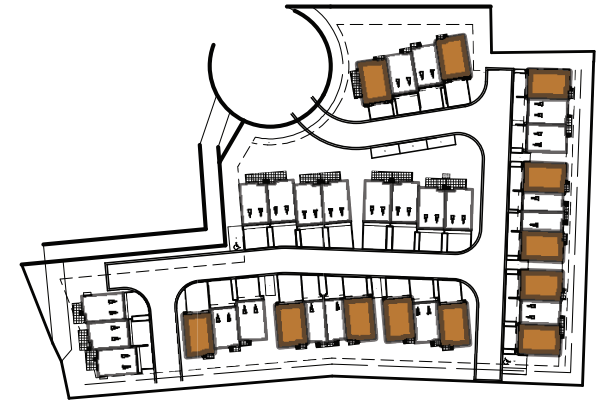


BERG (B2-A)

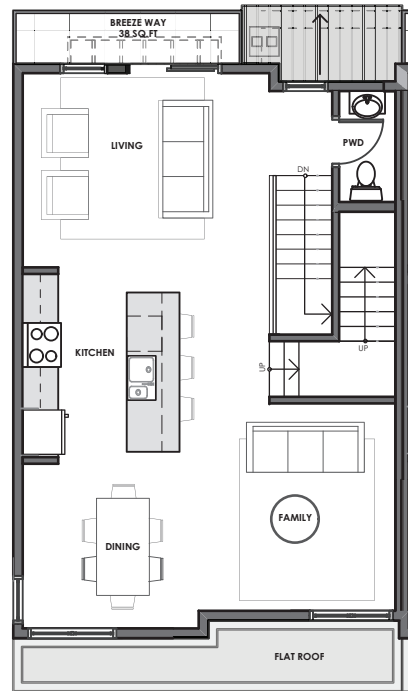
3-BEDROOM, 3-BATHROOM
2 CAR GARAGE: SIDE-BY-SIDE

Homes #101, #104, #105, #108, #111, #112,
#114, #115, #117, #118, #121, #124

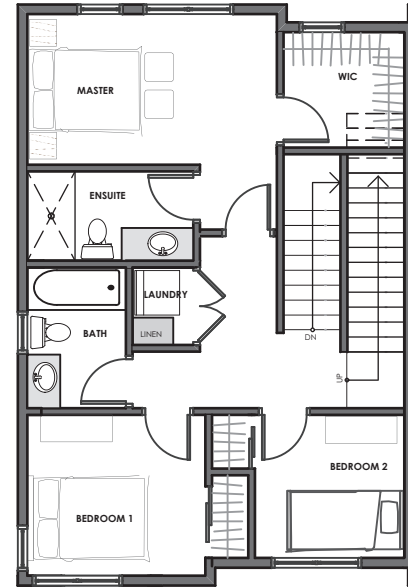
Total Interior: 1,500 Sq.Ft*
Total Exterior: 482 Sq.Ft*
Total Living: 1,982 Sq.Ft*



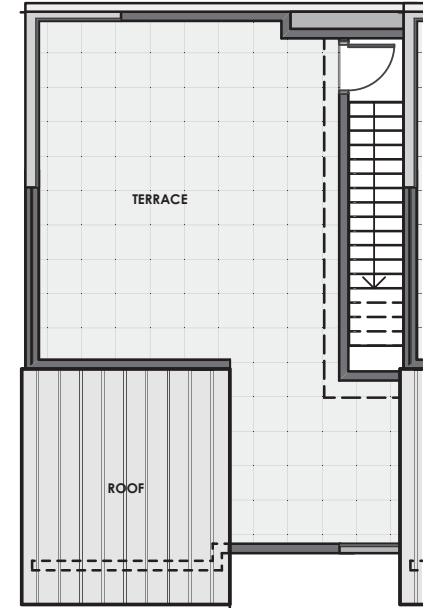
262 SQ.FT*



615 SQ.FT*



623 SQ.FT*



444 SQ.FT*

THE PEAKS

— KELOWNA, BC —

Nyrose and Associates
778-200-5634



thepeaksliving.ca

Developer reserves the right to make changes and modifications to size and specifications. Final design, construction, and features may differ. This is not an offering for sale. Any such offerings may only be made with a Disclosure Statement. E.&O.E. Sales & Marketing by DNA Project Marketing and Nyrose & Associates | RE/MAX Kelowna.

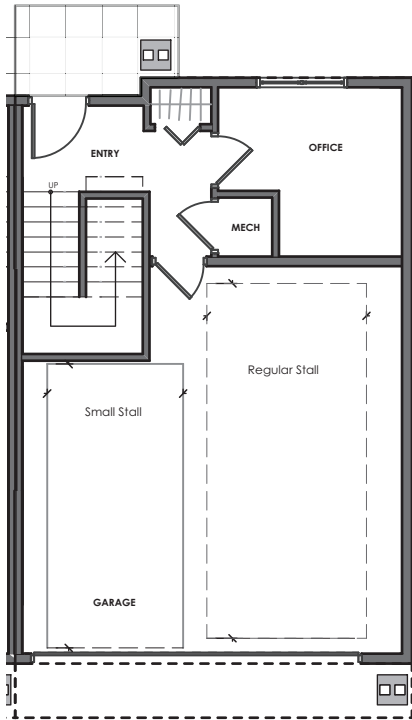
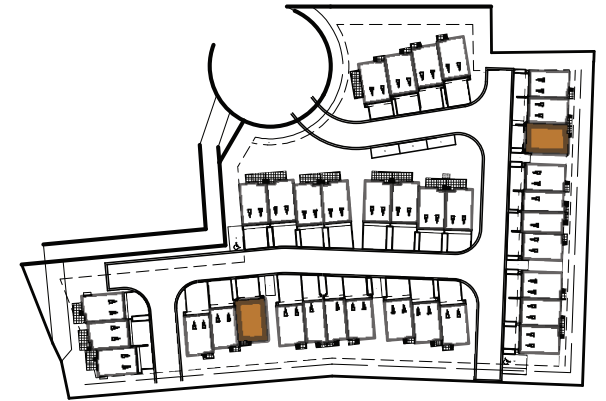


BERG (B2-B)

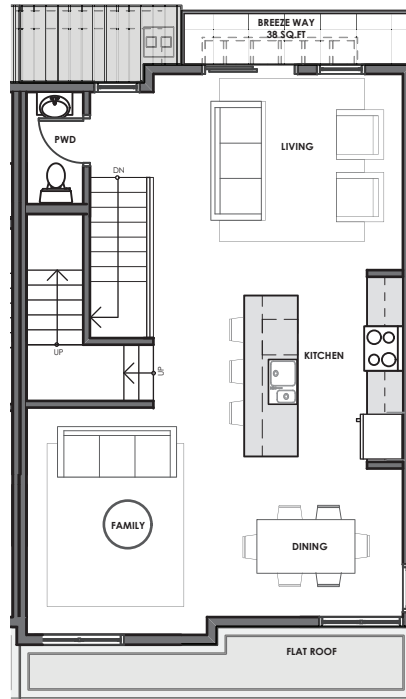
3-BEDROOM, 3-BATHROOM
2 CAR GARAGE: SIDE-BY-SIDE

Homes #107 & #122

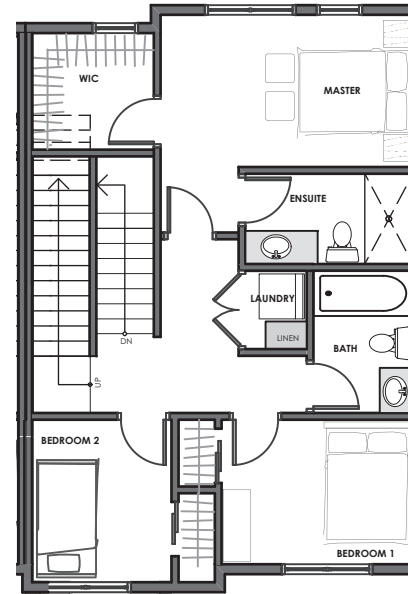
Total Interior: 1,500 Sq.Ft*
Total Exterior: 488 Sq.Ft*
Total Living: 1,988 Sq.Ft*



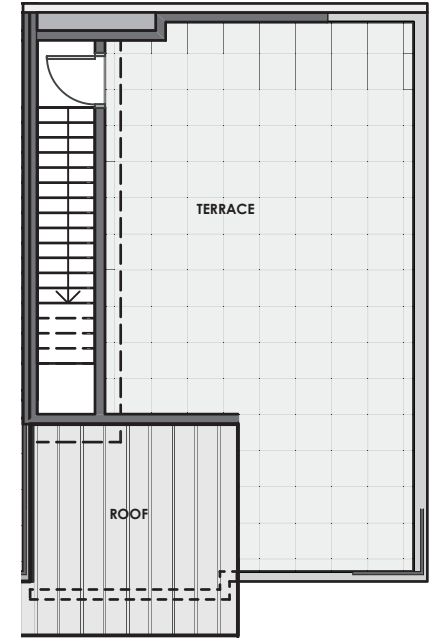
262 SQ.FT*



615 SQ.FT*



623 SQ.FT*



450 SQ.FT*

THE PEAKS

— KELOWNA, BC —

Nyrose and Associates
778-200-5634



thepeaksliving.ca

Developer reserves the right to make changes and modifications to size and specifications. Final design, construction, and features may differ. This is not an offering for sale. Any such offerings may only be made with a Disclosure Statement. E.&O.E. Sales & Marketing by DNA Project Marketing and Nyrose & Associates | RE/MAX Kelowna.

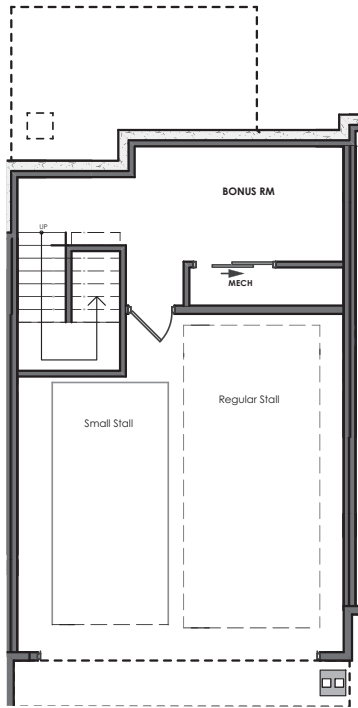
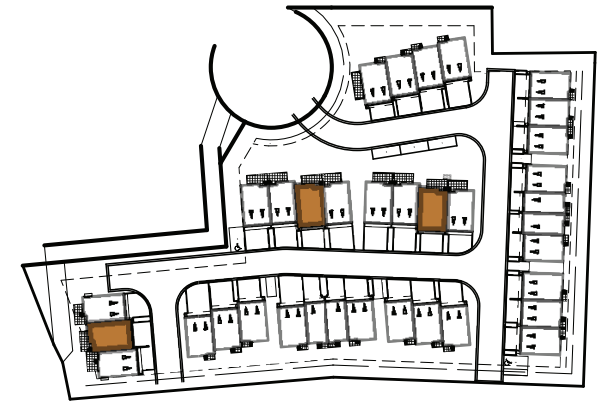


CLIFF (C1-A)

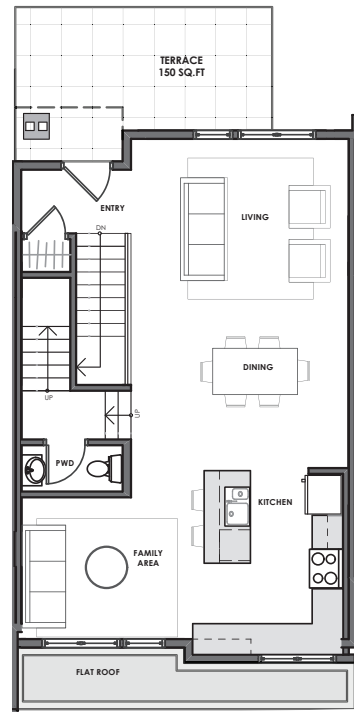
3-BEDROOM, 3-BATHROOM
2 CAR GARAGE: SIDE-BY-SIDE

Homes #126, #130, #134

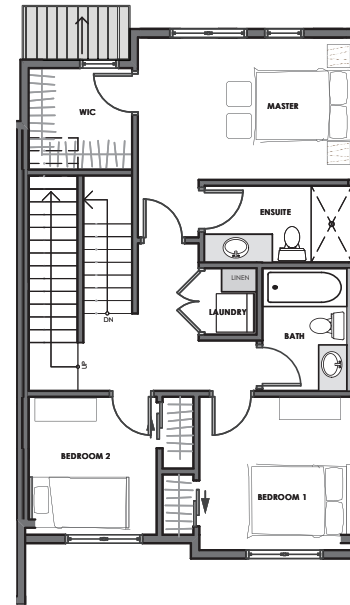
Total Interior: 1,551 Sq.Ft*
Total Exterior: 605 Sq.Ft*
Total Living: 2,156 Sq.Ft*



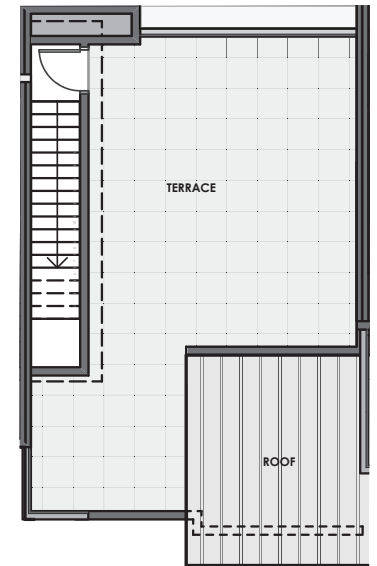
263 SQ.FT*



644 SQ.FT*



644 SQ.FT*



455 SQ.FT*

THE PEAKS

— KELOWNA, BC —

Nyrose and Associates
778-200-5634



thepeaksliving.ca

Developer reserves the right to make changes and modifications to size and specifications. Final design, construction, and features may differ. This is not an offering for sale. Any such offerings may only be made with a Disclosure Statement. E.&O.E. Sales & Marketing by DNA Project Marketing and Nyrose & Associates | RE/MAX Kelowna.