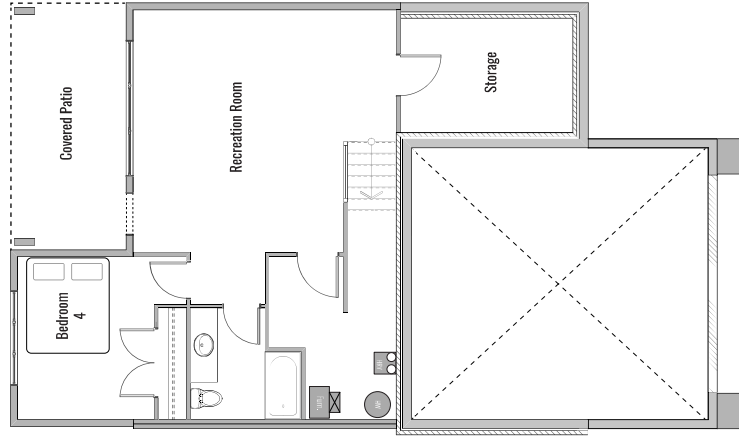


CEDAR End Home

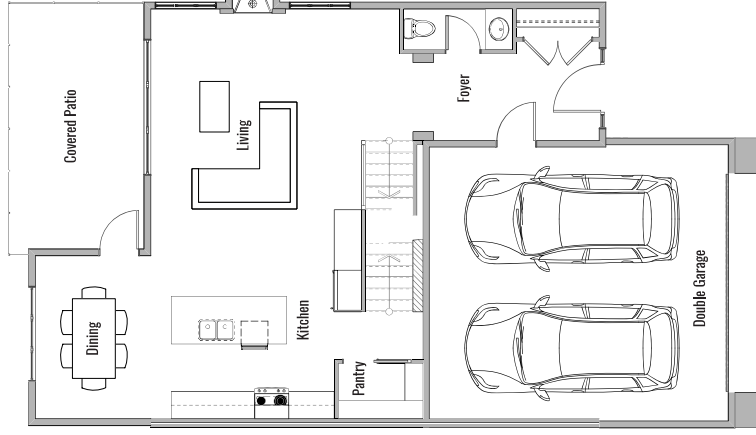
4 Bedroom + Recreation Room,
3.5 Bathroom, Double Garage
Living Space: 2422
Total Sqft: 2637



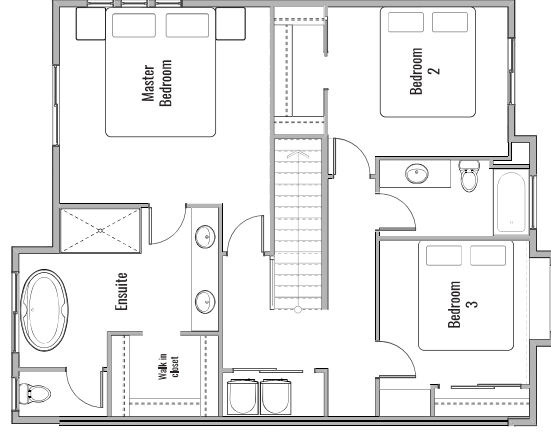
Some basement layouts may be inground or partially inground



Basement: Living Space: 581 SQ.FT - Total Sqft: 791 SQ.FT



Main Floor: 832 SQ.FT



Second Floor: 1009 SQ.FT

This is not to be considered an exhaustive list of specifications or design and is subject to change at any time. The developer reserves the right to make modifications and changes to building design, specification, features, and floor plans.