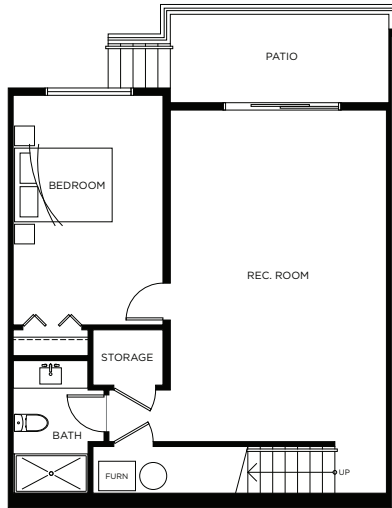


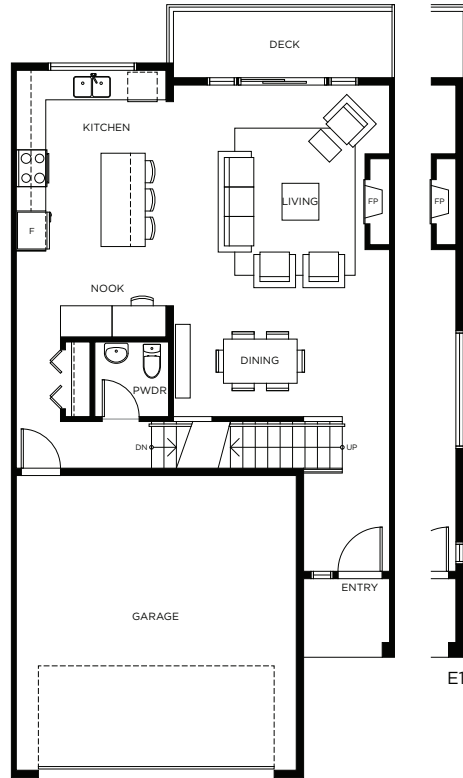
# PLAN E/E1

4 Bedroom, 3.5 Bath

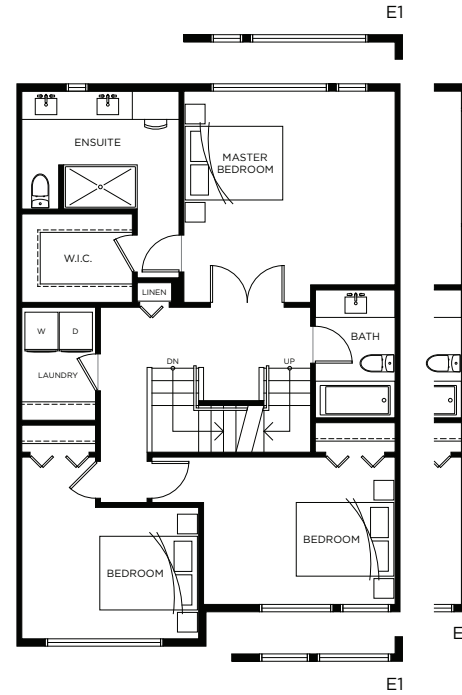
2,447 sf – 2,464 sf



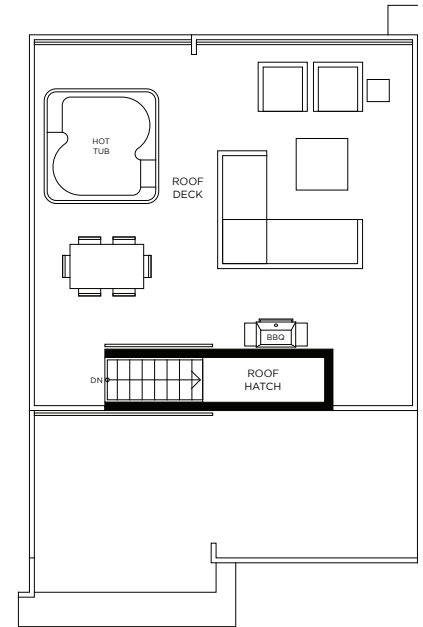
Basement Level



Main Level



Upper Level



Roof Level



[www.ShelterBayLiving.ca](http://www.ShelterBayLiving.ca)

Basement	726 – 731 sf
Main Floor	760 – 765 sf
Upper Floor	962 – 968 sf
<b>TOTAL</b>	<b>2,447 – 2,464 sf</b>
Roof Deck	599 – 603 sf