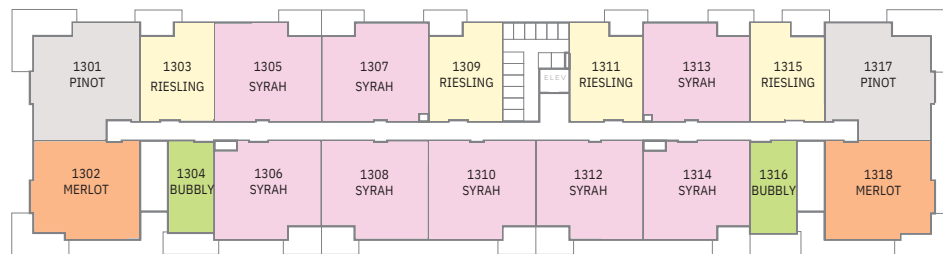
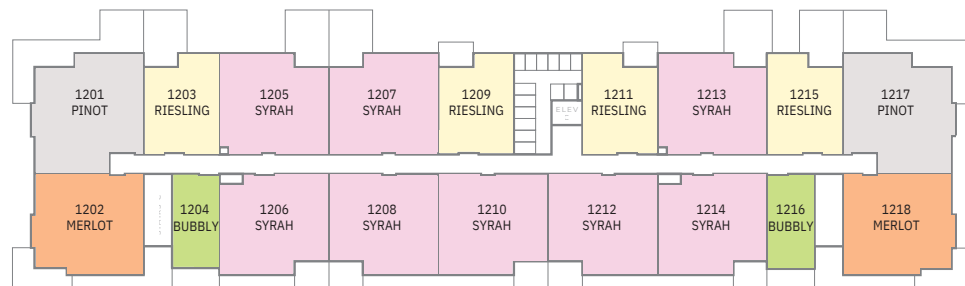


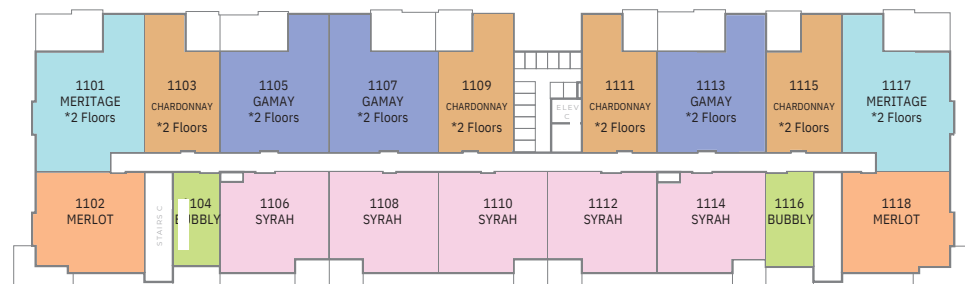
FLOOR FOUR



FLOOR THREE



FLOOR TWO



FLOOR ONE

**Interior Living:** Approx. 406 sqft  
**Exterior Living:** Approx. 71 sqft  
**Total Living:** Approx. 477 sqft



FLOOR FOUR



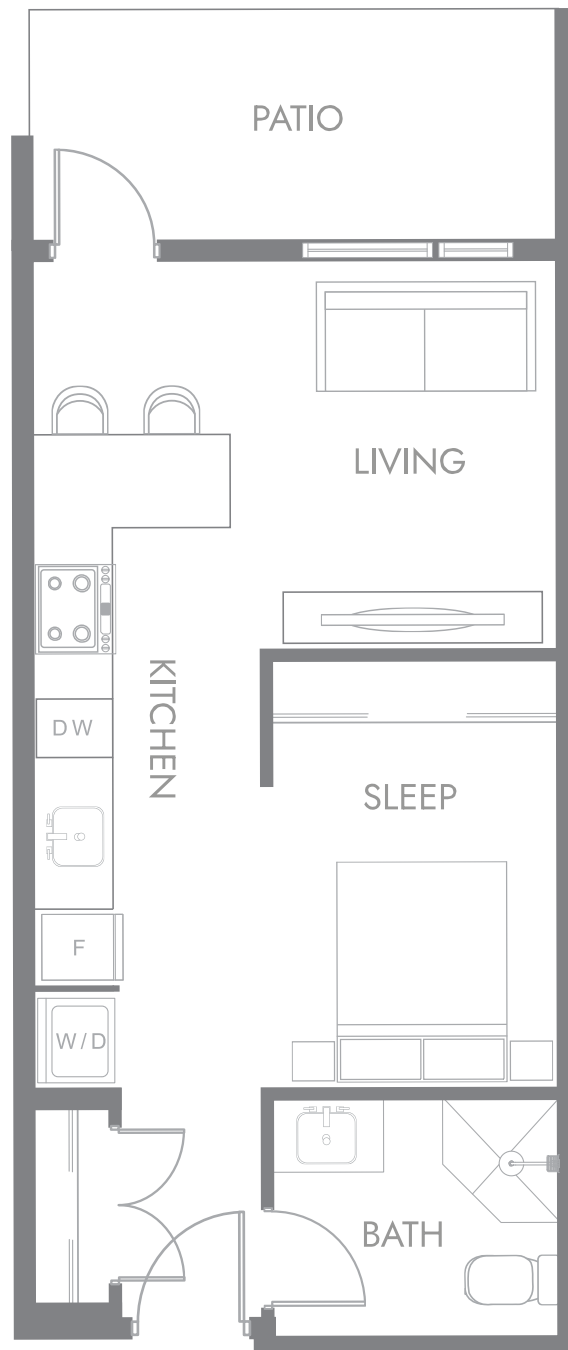
FLOOR THREE



FLOOR TWO



FLOOR ONE



**ASCENT**

BY

**HIGHSTREET**



# RIESLING

## 1 BED 1 BATH

Interior Living: Approx. 659 sqft  
Exterior Living: Approx. 64 - 198 sqft  
Total Living: Approx. 723 - 860 sqft



FLOOR FOUR

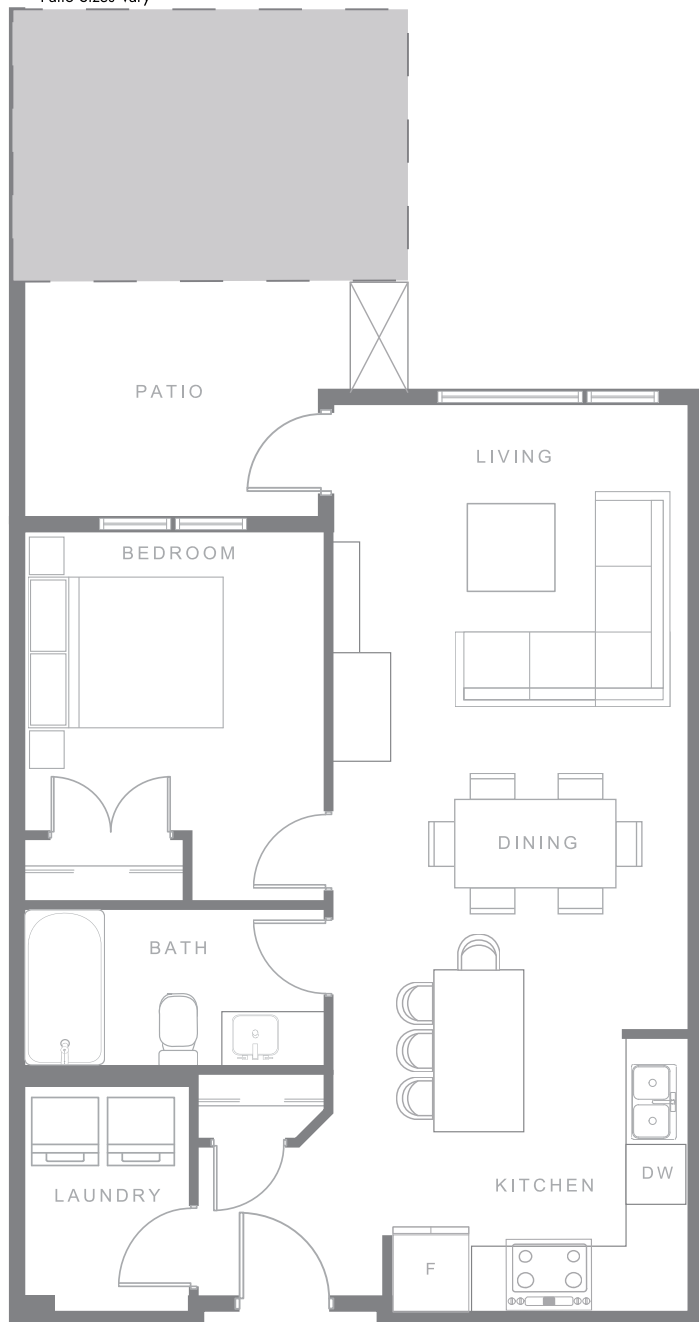


FLOOR THREE



FLOOR TWO

\*Patio Sizes Vary



ASCENT

BY

HIGHSTREET

NYROSE  
AND ASSOCIATES

RE/MAX  
Kelowna

DNA  
REALTY

HIGHSTREET

Feel Good. Live Right.™ Guaranteed.

AscentKelowna.ca

778-200-5576

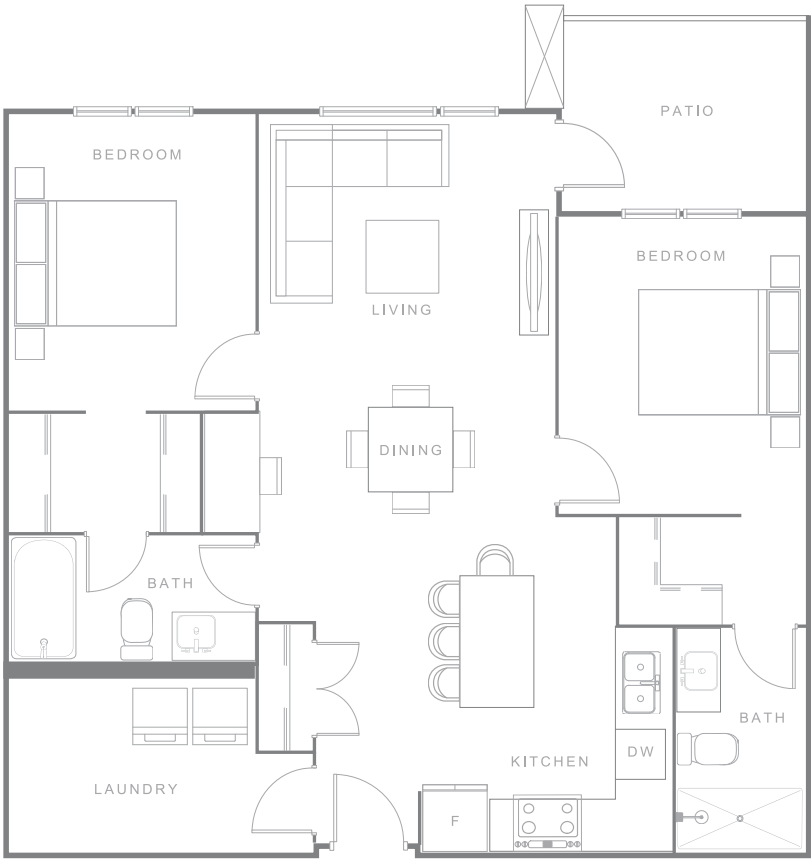
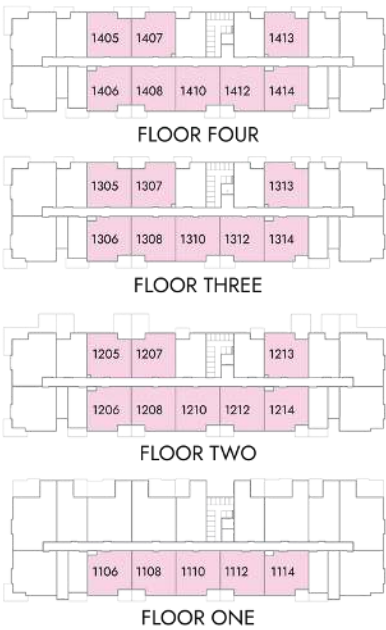
E&O.E. This is not an offering for sale. An offering for sale may only be made after filing a Disclosure Statement under the Real Estate Development Marketing Act. The developer reserves the right to make modifications and changes to building design, landscaping, specification, features, and floor plans. Sales by Nyrose and Associates and RE/MAX Kelowna.



# SYRAH

## 2 BED 2 BATH

Interior Living: Approx. 957 - 981 sqft  
Exterior Living: Approx. 67 - 204 sqft  
Total Living: Approx. 1,024 - 1185 sqft



\*Laundry room sizes vary.



Feel Good. Live Right.™ Guaranteed.

AscentKelowna.ca

778-200-5576

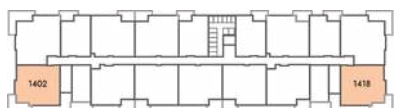
E&O.E. This is not an offering for sale. An offering for sale may only be made after filing a Disclosure Statement under the Real Estate Development Marketing Act. The developer reserves the right to make modifications and changes to building design, landscaping, specification, features, and floor plans. Sales by Nyrose and Associates and RE/MAX Kelowna.



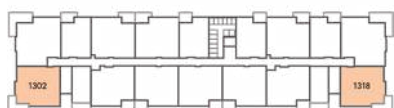
# MERLOT

## 2 BED 2 BATH

Interior Living: Approx. 1,010 sqft  
Exterior Living: Approx. 125 sqft  
Total Living: Approx. 1,135 sqft



FLOOR FOUR



FLOOR THREE



FLOOR TWO



FLOOR ONE



ASCENT

BY

HIGHSTREET

NYROSE  
AND ASSOCIATES

RE/MAX  
Kelowna

DNA  
REALTY

HIGHSTREET

Feel Good. Live Right.™ Guaranteed.

AscentKelowna.ca

778-200-5576

E.O.E. This is not an offering for sale. An offering for sale may only be made after filing a Disclosure Statement under the Real Estate Development Marketing Act. The developer reserves the right to make modifications and changes to building design, landscaping, specification, features, and floor plans. Sales by Nyrose and Associates and RE/MAX Kelowna.

Interior Living: Approx. 1,114 sqft  
Exterior Living: Approx. 208-301 sqft  
Total Living: Approx. 1,135 - 1,495 sqft



FLOOR FOUR



FLOOR THREE



FLOOR TWO



**ASCENT**

BY

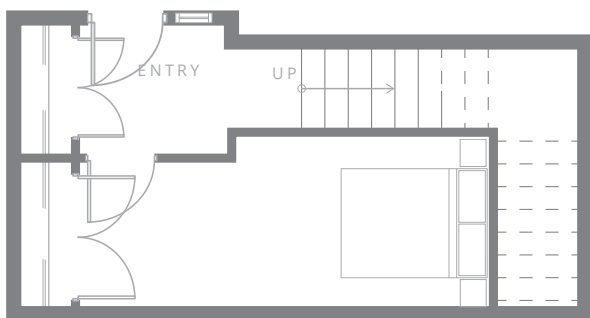
**HIGHSTREET**



# CHARDONNAY

## 1 BED + DEN 1 BATH

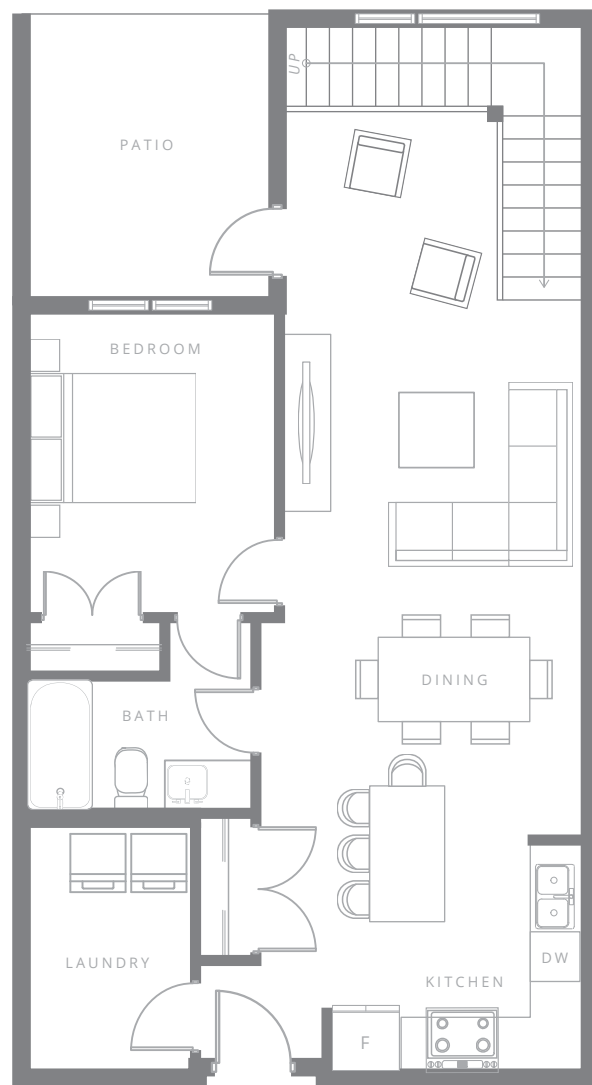
Interior Living: Approx. 1,121 sqft  
Exterior Living: Approx. 111 sqft  
Total Living: Approx. 1,232 sqft



Lower Level



FLOOR ONE



Upper Level

ASCENT

BY

HIGHSTREET

NYROSE  
AND ASSOCIATES

RE/MAX  
Kelowna

DNA  
REALTY

HIGHSTREET

Feel Good. Live Right.™ Guaranteed.

AscentKelowna.ca

778-200-5576

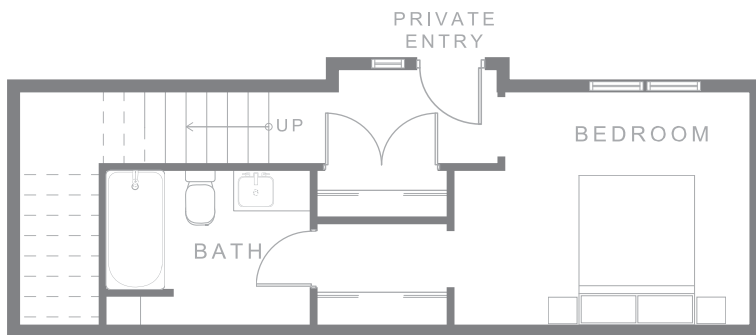
E.O.E. This is not an offering for sale. An offering for sale may only be made after filing a Disclosure Statement under the Real Estate Development Marketing Act. The developer reserves the right to make modifications and changes to building design, landscaping, specification, features, and floor plans. Sales by Nyrose and Associates and RE/MAX Kelowna.



# GAMAY

## 3 BED 3 BATH

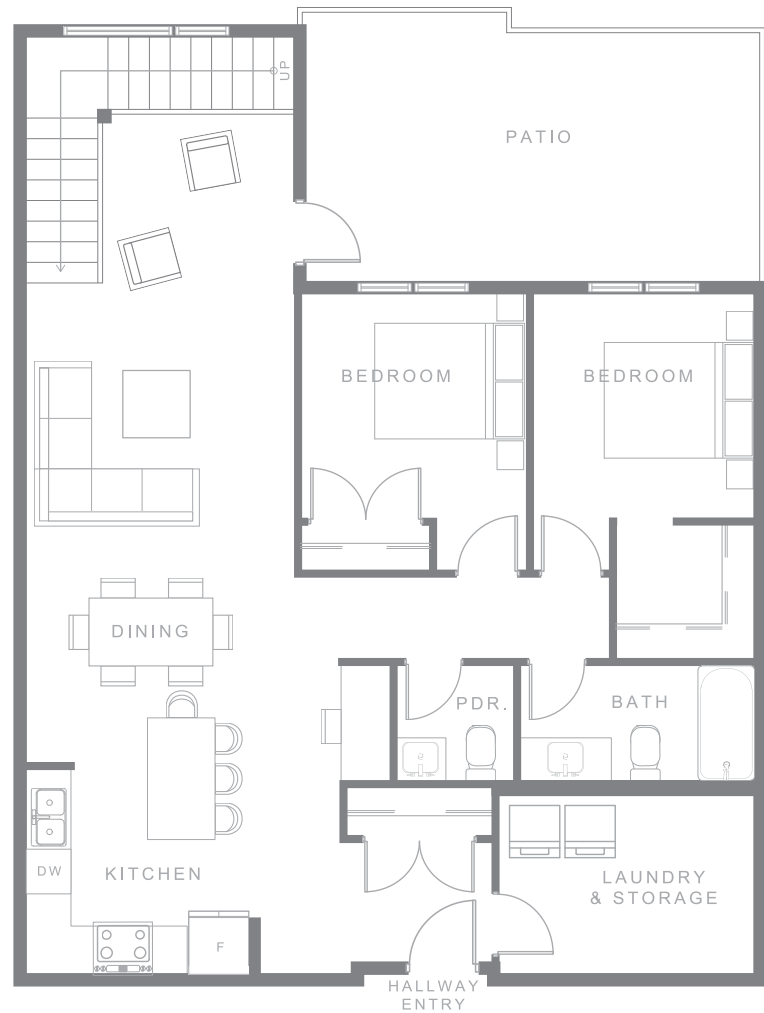
Interior Living: Approx. 1,564 sqft  
Exterior Living: Approx. 216 sqft  
Total Living: Approx. 1,780 sqft



Lower Level



FLOOR ONE



Upper Level



Feel Good. Live Right.™ Guaranteed.

AscentKelowna.ca

778-200-5576

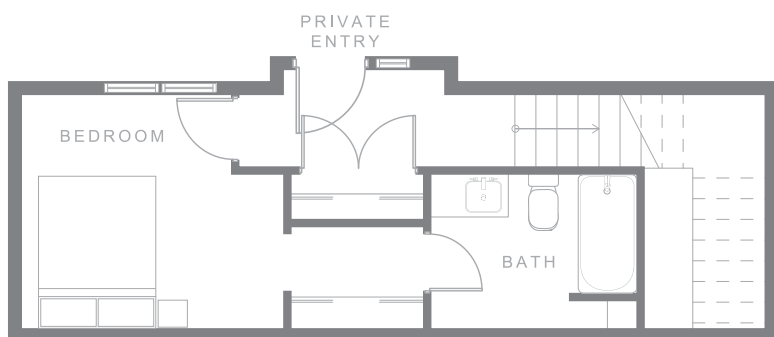
E&O.E. This is not an offering for sale. An offering for sale may only be made after filing a Disclosure Statement under the Real Estate Development Marketing Act. The developer reserves the right to make modifications and changes to building design, landscaping, specification, features, and floor plans. Sales by Nyrose and Associates and RE/MAX Kelowna.



Interior Living: Approx. 1,708 sqft

Exterior Living: Approx. 226 sqft

Total Living: Approx. 1,934 sqft



Lower Level



FLOOR ONE



Upper Level

ASCENT

BY

HIGHSTREET