

# WYNWOOD GREEN



## COMPLETE FLOORPLAN SET

585 AUSTIN - PAGES 2 - 19  
595 AUSTIN - PAGES 20 - 38

WYNWOOD  
GREEN



585 AUSTIN AVE.

# WYNWOOD GREEN

585 AUSTIN

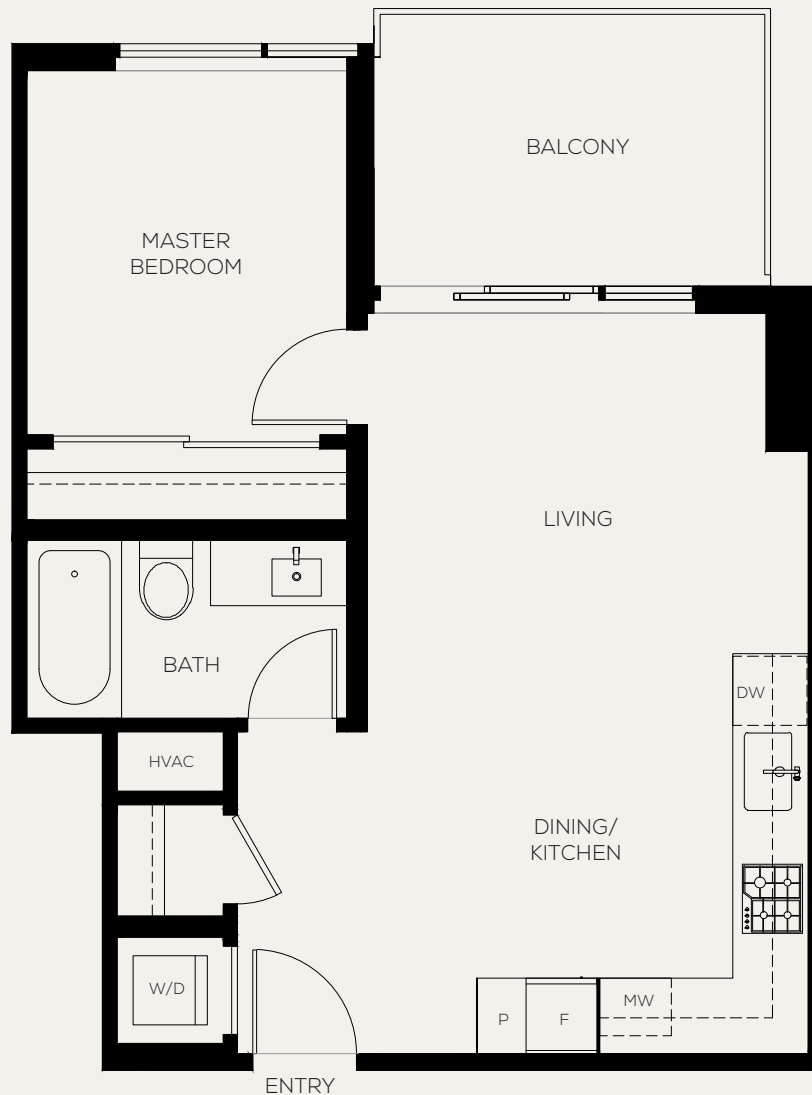
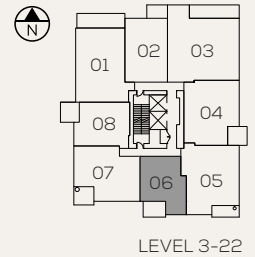
## PLAN A1

1 BEDROOM + 1 BATH

INTERIOR 538 SQ FT

EXTERIOR 89 SQ FT

TOTAL 627 SQ FT



The developer (Anthem 585 Austin Developments LP) reserves the right to make changes and modifications to the information contained herein. Floorplans, floorplates and windows are subject to change without notice. Please contact a developer sales representative for details. E. & O.E. \*The size and configuration of the balcony or patio represent only a typical balcony or patio in the development. The actual size and configuration of the balcony or patio for any strata lot may vary from that set out in this floor plan. Please contact a developer sales representative for details.

# WYNWOOD GREEN

585 AUSTIN

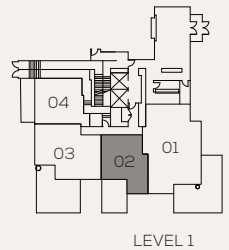
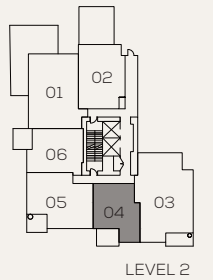
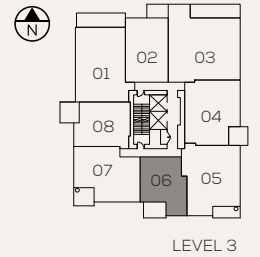
## PLAN A1

1 BEDROOM + 1 BATH

INTERIOR 539 SQ FT

EXTERIOR 89 - 220 SQ FT

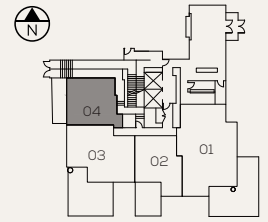
TOTAL 628 - 759 SQ FT



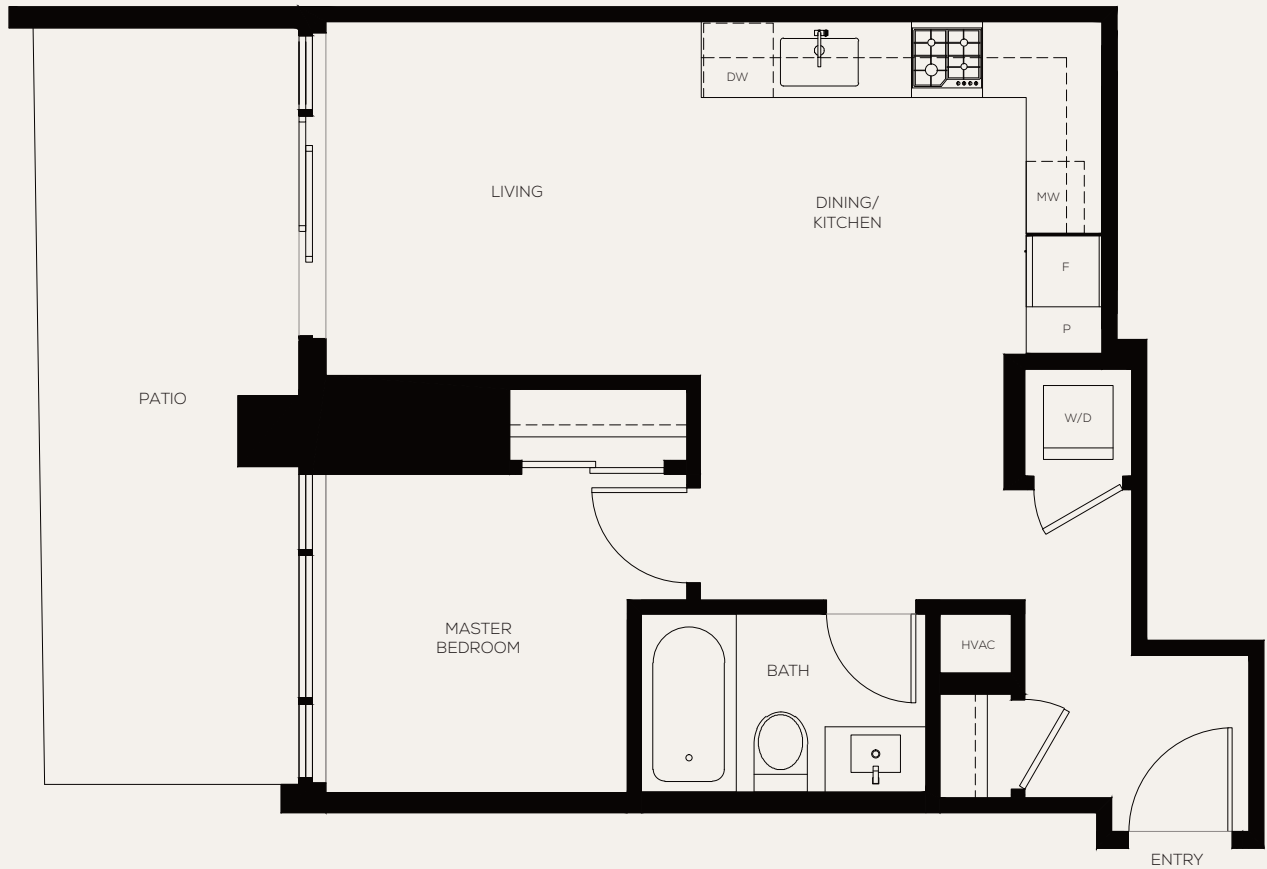
# WYNWOOD GREEN

## 585 AUSTIN PLAN A2

1 BEDROOM + 1 BATH  
INTERIOR 549 SQ FT  
EXTERIOR 169 SQ FT  
TOTAL 718 SQ FT



LEVEL 1



The developer (Anthem 585 Austin Developments LP) reserves the right to make changes and modifications to the information contained herein. Floorplans, floorplates and windows are subject to change without notice. Please contact a developer sales representative for details. E. & O.E. \*The size and configuration of the balcony or patio represent only a typical balcony or patio in the development. The actual size and configuration of the balcony or patio for any strata lot may vary from that set out in this floor plan. Please contact a developer sales representative for details.

# WYNWOOD GREEN

585 AUSTIN

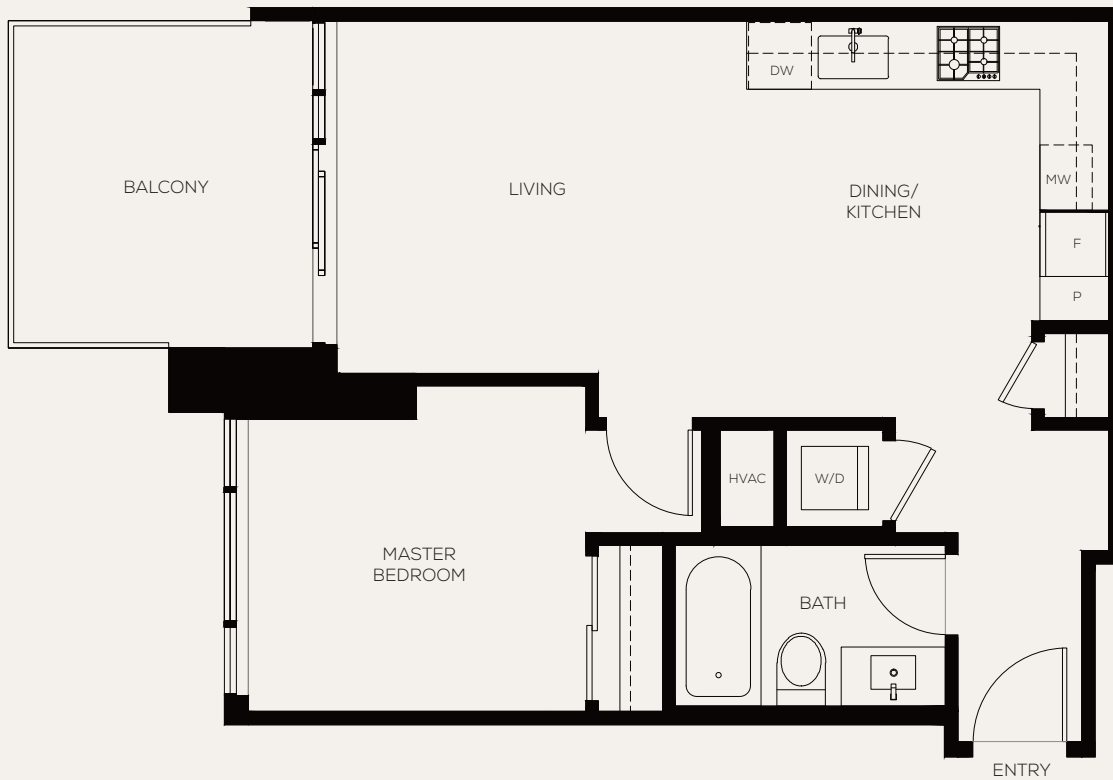
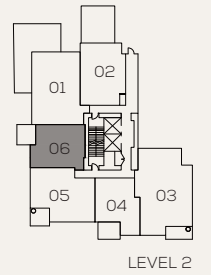
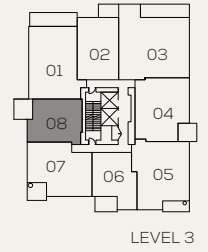
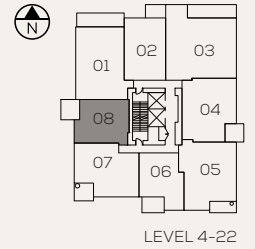
## PLAN A4

1 BEDROOM + 1 BATH

INTERIOR 603 SQ FT

EXTERIOR 101 SQ FT

TOTAL 704 SQ FT



# WYNWOOD GREEN

585 AUSTIN

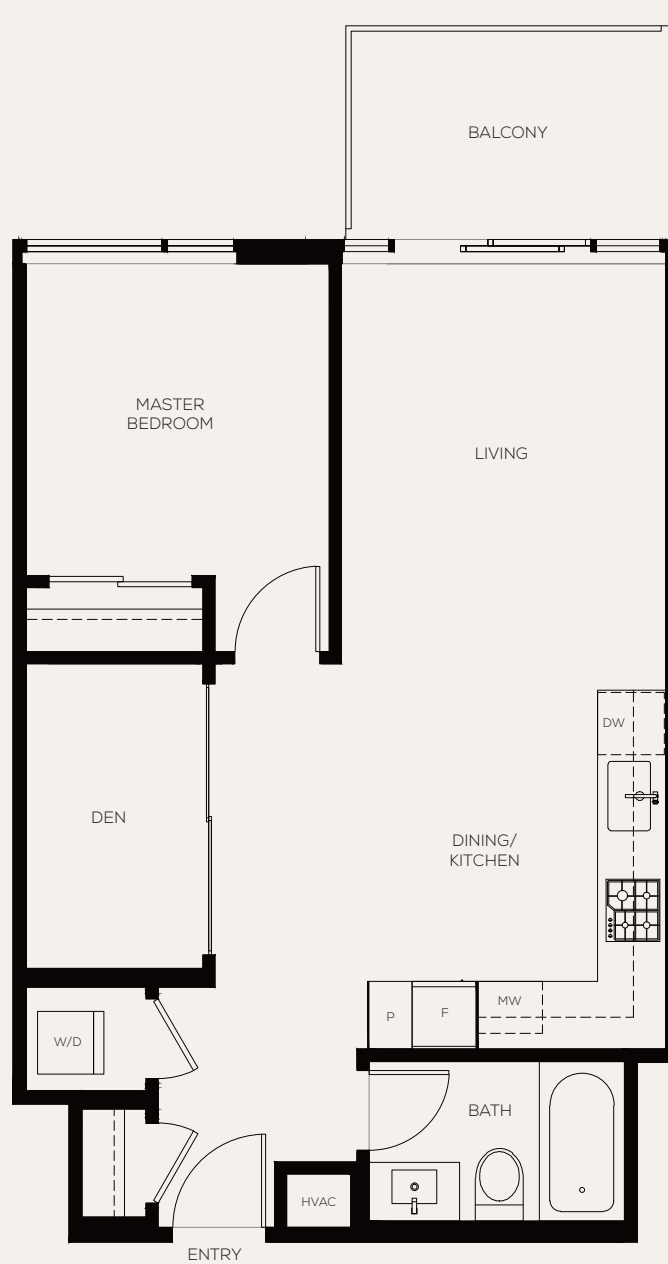
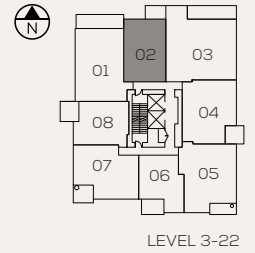
## PLAN B1

1 BEDROOM + DEN + 1 BATH

INTERIOR 642 SQ. FT.

EXTERIOR 73 SQ. FT.

TOTAL 715 SQ. FT.

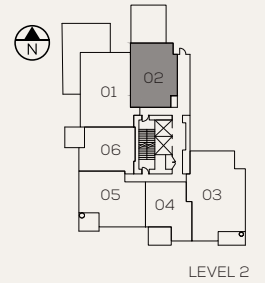


The developer (Anthem 585 Austin Developments LP) reserves the right to make changes and modifications to the information contained herein. Floorplans, floorplates and windows are subject to change without notice. Please contact a developer sales representative for details. E. & O.E. \*The size and configuration of the balcony or patio represent only a typical balcony or patio in the development. The actual size and configuration of the balcony or patio for any strata lot may vary from that set out in this floor plan. Please contact a developer sales representative for details.

# WYNWOOD GREEN

## 585 AUSTIN PLAN B2

1 BEDROOM + DEN + 1 BATH  
INTERIOR 677 SQ. FT.  
EXTERIOR 326 SQ. FT.  
TOTAL 1,003 SQ. FT.



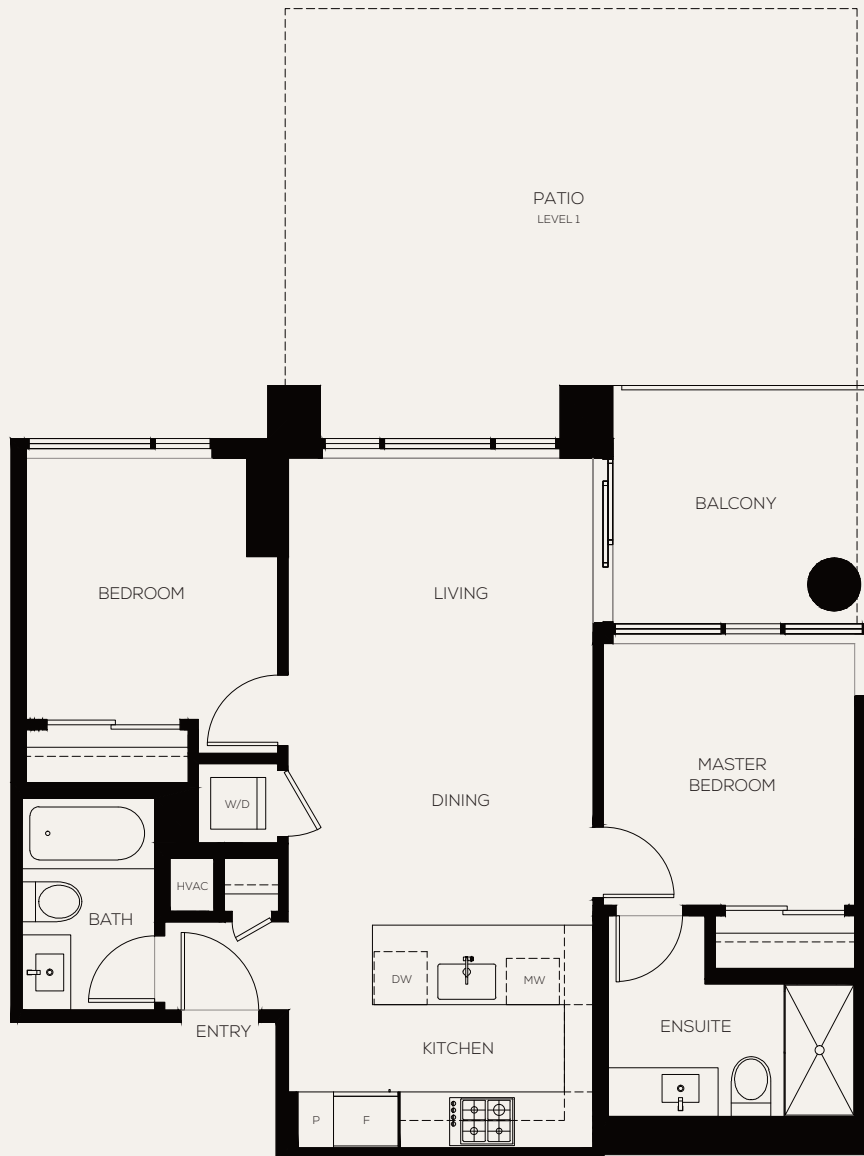
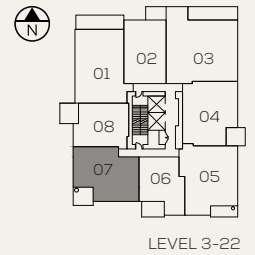
The developer (Anthem 585 Austin Developments LP) reserves the right to make changes and modifications to the information contained herein. Floorplans, floorplates and windows are subject to change without notice. Please contact a developer sales representative for details. E. & O.E. \*The size and configuration of the balcony or patio represent only a typical balcony or patio in the development. The actual size and configuration of the balcony or patio for any strata lot may vary from that set out in this floor plan. Please contact a developer sales representative for details.



# WYNWOOD GREEN

## 585 AUSTIN PLAN C

2 BEDROOM + 2 BATH  
INTERIOR 749 SQ FT  
EXTERIOR 90 - 441 SQ FT  
TOTAL 838 - 1,189 SQ FT

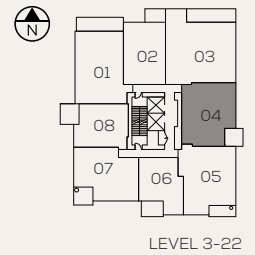


The developer (Anthem 585 Austin Developments LP) reserves the right to make changes and modifications to the information contained herein. Floorplans, floorplates and windows are subject to change without notice. Please contact a developer sales representative for details. E. & O.E. \*The size and configuration of the balcony or patio represent only a typical balcony or patio in the development. The actual size and configuration of the balcony or patio for any strata lot may vary from that set out in this floor plan. Please contact a developer sales representative for details.

# WYNWOOD GREEN

## 585 AUSTIN PLAN C2

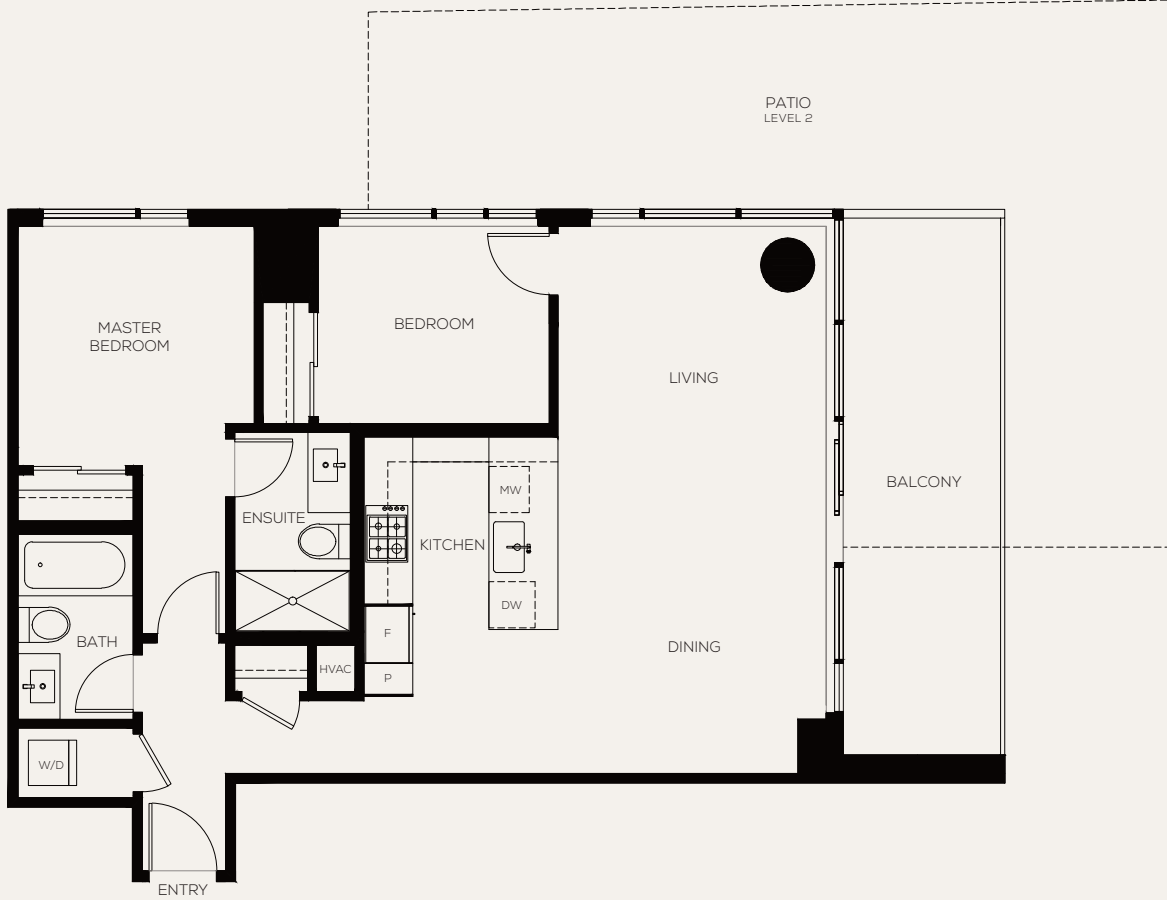
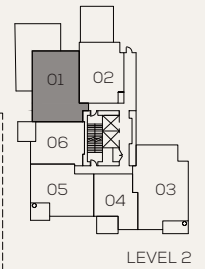
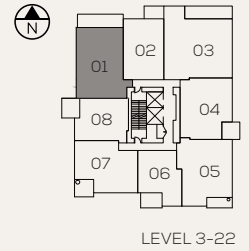
2 BEDROOM + 2 BATH  
INTERIOR 833 SQ FT  
EXTERIOR 81 SQ FT  
TOTAL 914 SQ FT



# WYNWOOD GREEN

## 585 AUSTIN PLAN C4

2 BEDROOM + 2 BATH  
 INTERIOR 920 SQ FT  
 EXTERIOR 169 - 526 SQ FT  
 TOTAL 1,089 - 1,146 SQ FT

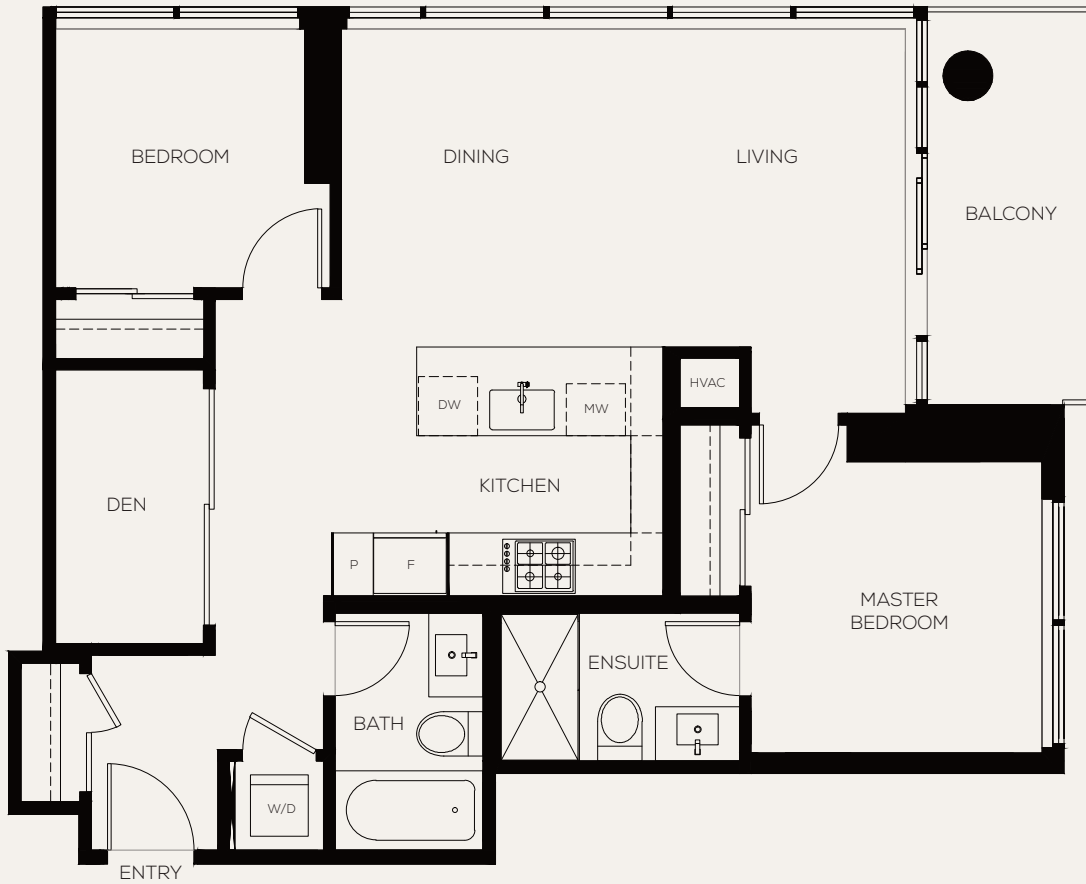
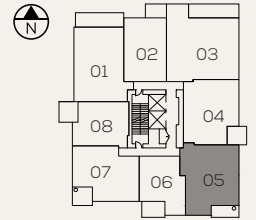


The developer (Anthem 585 Austin Developments LP) reserves the right to make changes and modifications to the information contained herein. Floorplans, floorplates and windows are subject to change without notice. Please contact a developer sales representative for details. E. & O.E. \*The size and configuration of the balcony or patio represent only a typical balcony or patio in the development. The actual size and configuration of the balcony or patio for any strata lot may vary from that set out in this floor plan. Please contact a developer sales representative for details.

# WYNWOOD GREEN

## 585 AUSTIN PLAN D

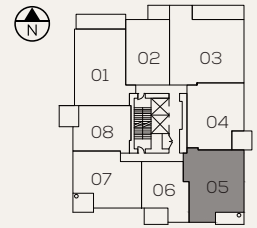
2 BEDROOM + DEN + 2 BATH  
INTERIOR 875 SQ. FT.  
EXTERIOR 81 SQ. FT.  
TOTAL 952 SQ. FT.



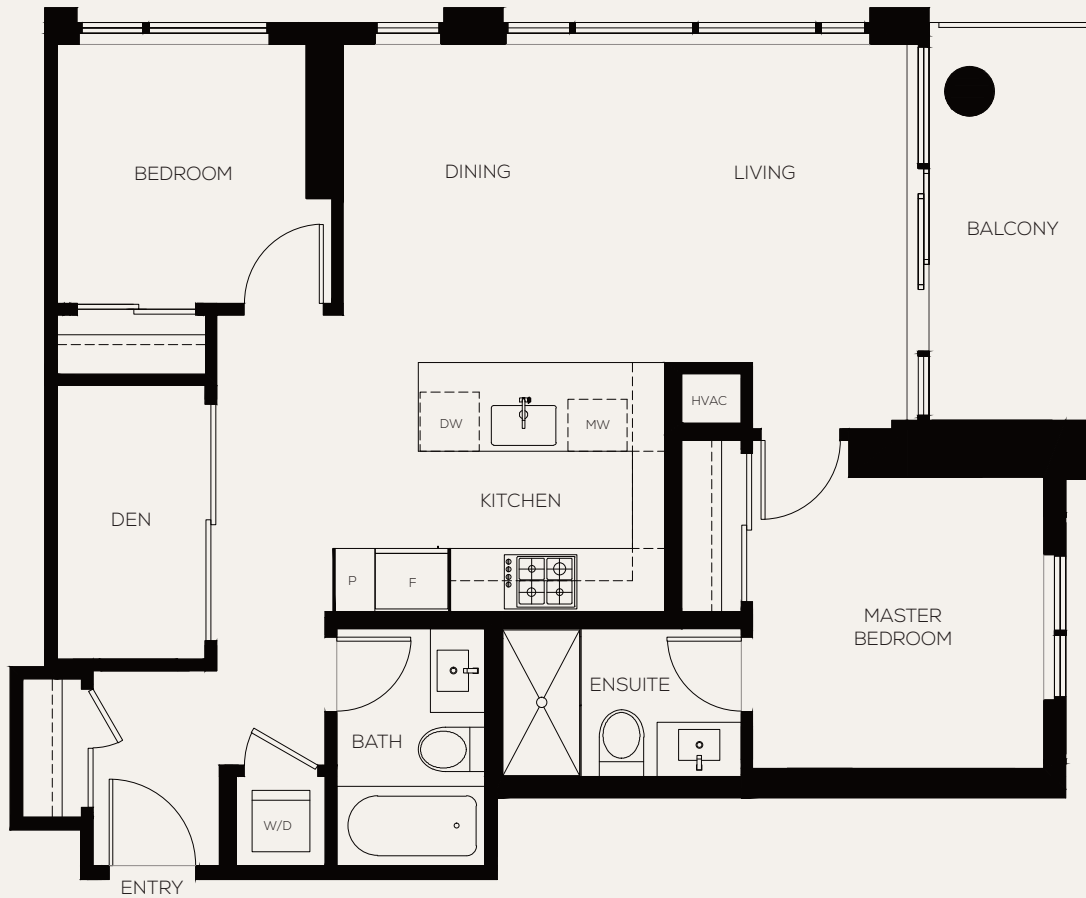
# WYNWOOD GREEN

## 585 AUSTIN PLAN D

2 BEDROOM + DEN + 2 BATH  
INTERIOR 875 SQ FT  
EXTERIOR 78 SQ FT  
TOTAL 953 SQ FT



LEVEL 4 - 22



The developer (Anthem 585 Austin Developments LP) reserves the right to make changes and modifications to the information contained herein. Floorplans, floorplates and windows are subject to change without notice. Please contact a developer sales representative for details. E. & O.E. \*The size and configuration of the balcony or patio represent only a typical balcony or patio in the development. The actual size and configuration of the balcony or patio for any strata lot may vary from that set out in this floor plan. Please contact a developer sales representative for details.

# WYNWOOD GREEN

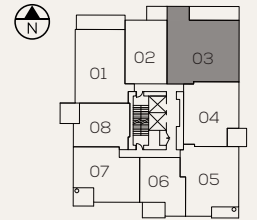
## 585 AUSTIN PLAN E

3 BEDROOM + FLEX + 2 BATH

INTERIOR 1,136 SQ FT

EXTERIOR 168 SQ FT

TOTAL 1,304 SQ FT



LEVEL 3 - 22



The developer (Anthem 585 Austin Developments LP) reserves the right to make changes and modifications to the information contained herein. Floorplans, floorplates and windows are subject to change without notice. Please contact a developer sales representative for details. E. & O.E. \*The size and configuration of the balcony or patio represent only a typical balcony or patio in the development. The actual size and configuration of the balcony or patio for any strata lot may vary from that set out in this floor plan. Please contact a developer sales representative for details.

# WYNWOOD GREEN

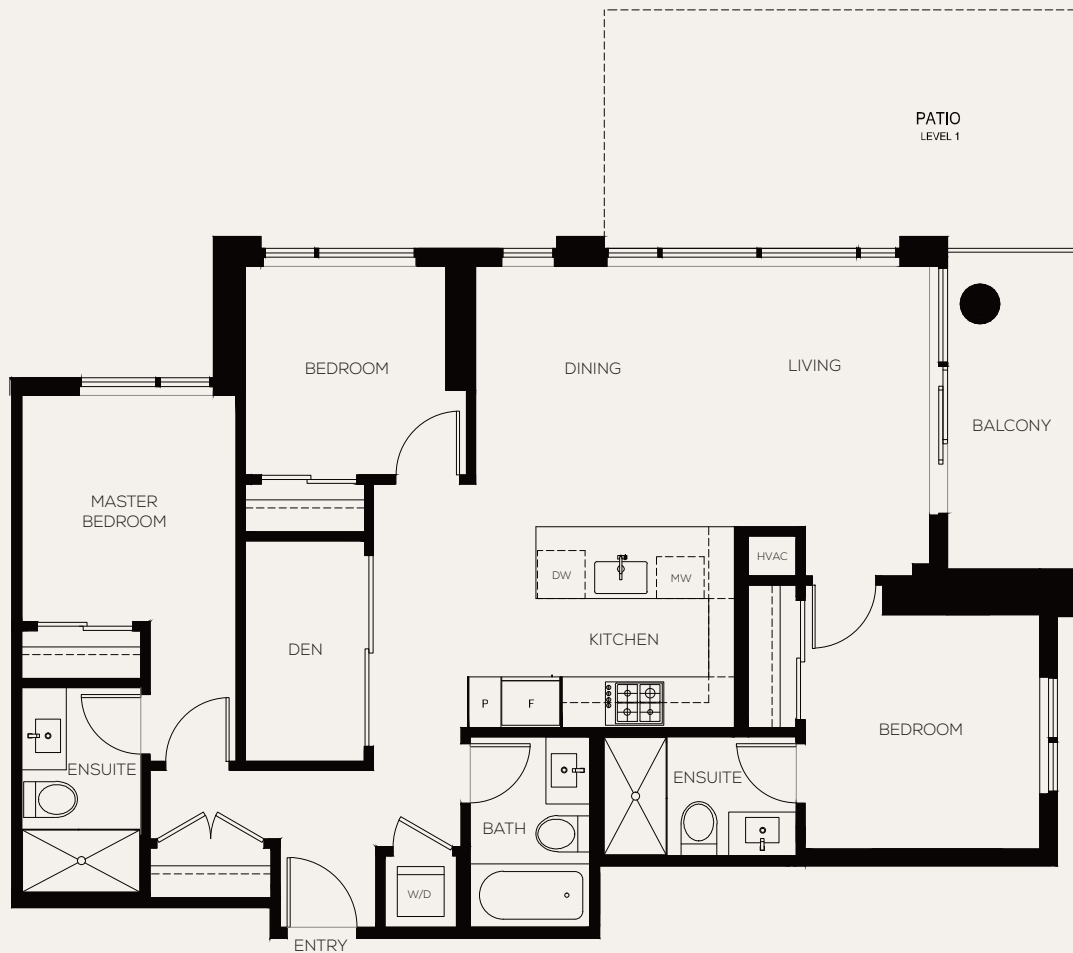
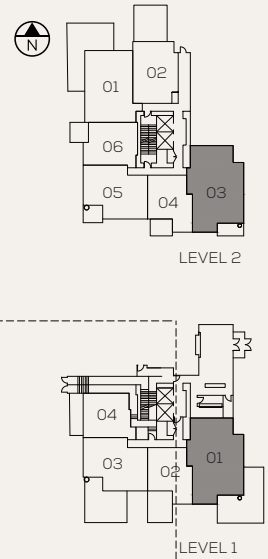
## 585 AUSTIN PLAN F

3 BEDROOM + DEN + 3 BATH

INTERIOR 1,076 SQ FT

EXTERIOR 81 - 506 SQ FT

TOTAL 1,157 - 1,582 SQ FT



# WYNWOOD GREEN

585 AUSTIN

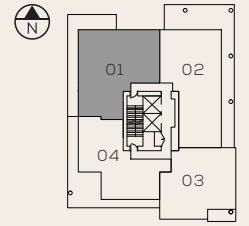
## PLAN PH1

3 BEDROOM + DEN + 3½ BATH

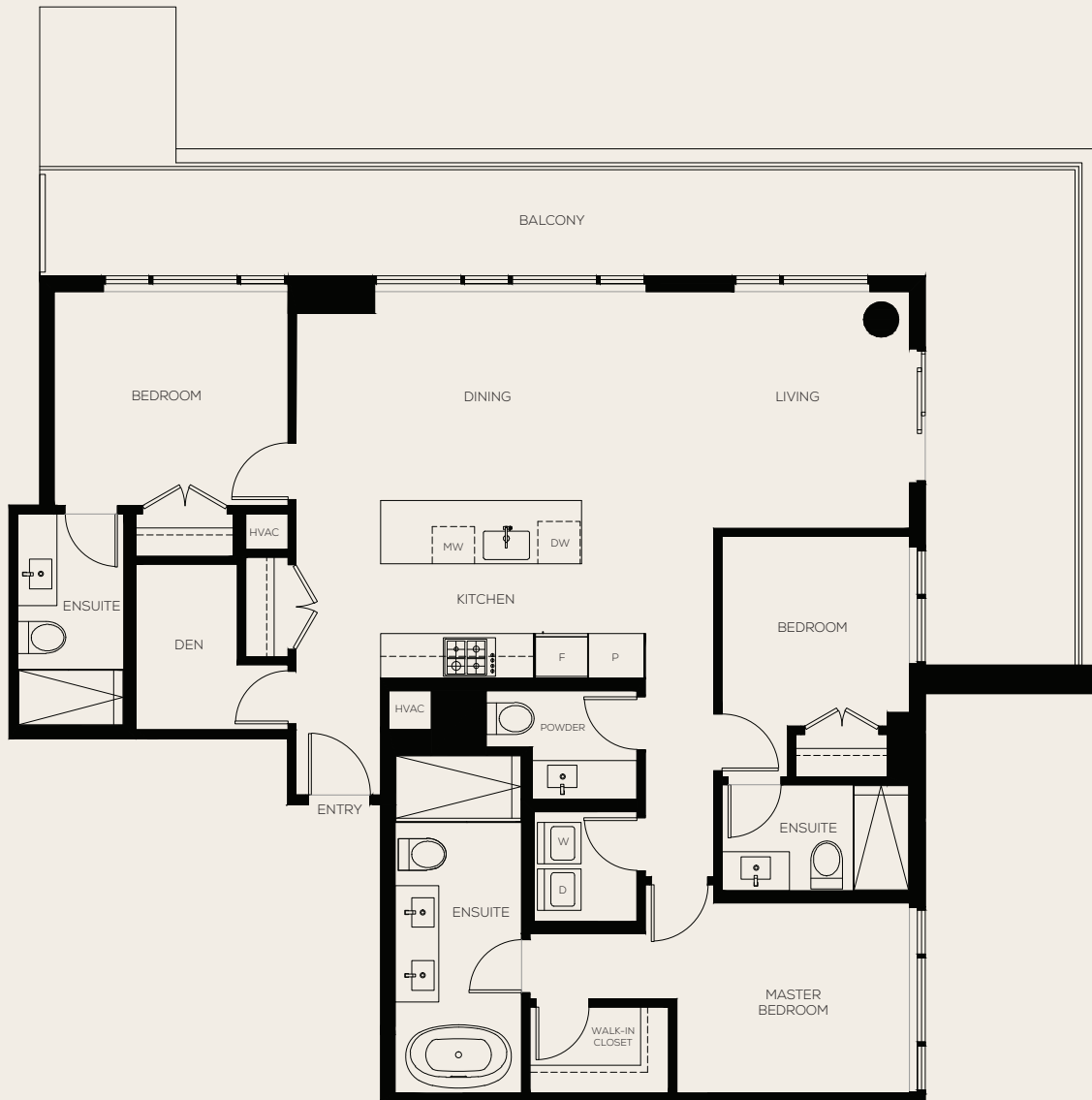
INTERIOR 1,374 SQ FT

EXTERIOR 395 SQ FT

TOTAL 1,769 SQ FT



LEVEL 23



The developer (Anthem 585 Austin Developments LP) reserves the right to make changes and modifications to the information contained herein. Floorplans, floorplates and windows are subject to change without notice. Please contact a developer sales representative for details. E. & O.E. \*The size and configuration of the balcony or patio represent only a typical balcony or patio in the development. The actual size and configuration of the balcony or patio for any strata lot may vary from that set out in this floor plan. Please contact a developer sales representative for details.



# WYNWOOD

## GREEN

585 AUSTIN

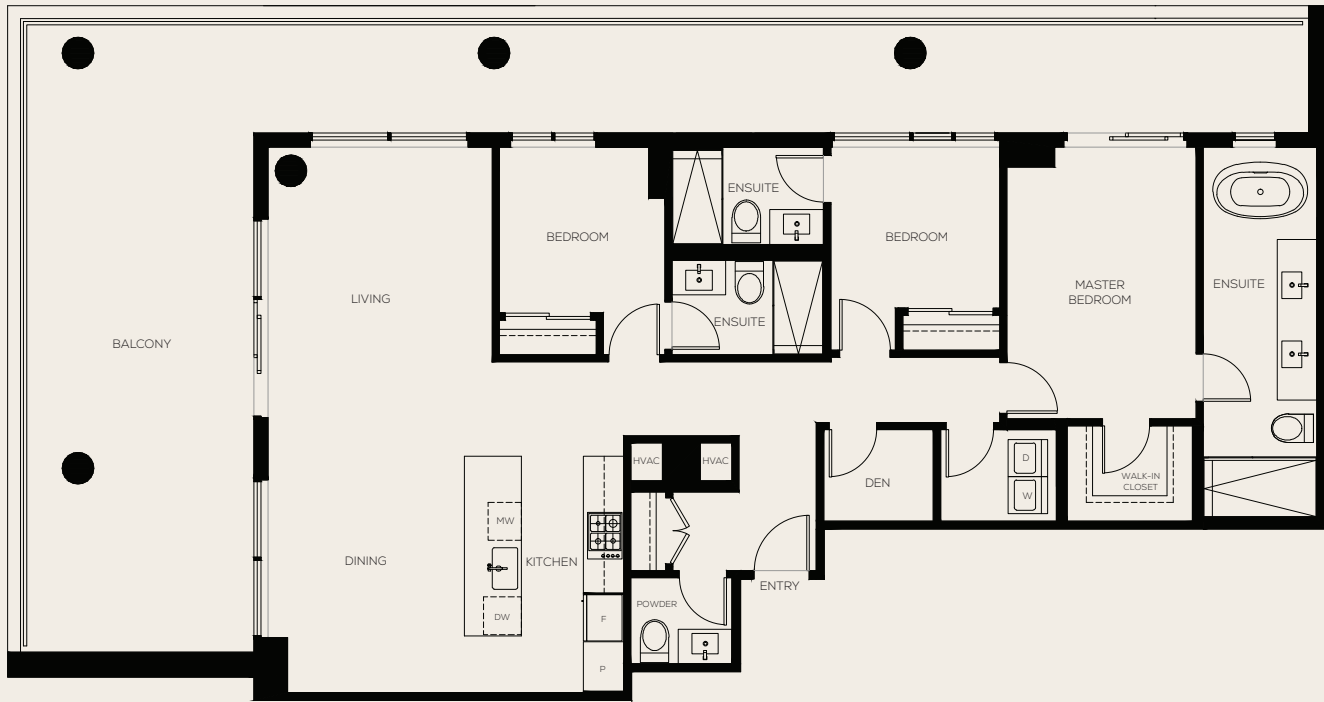
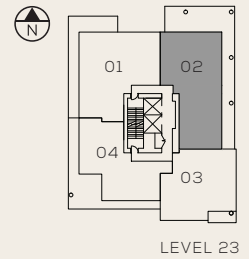
## PLAN PH2

3 BEDROOM + DEN + 3½ BATH

INTERIOR 1,423 SQ. FT.

EXTERIOR 759 SQ. FT.

TOTAL 2,182 SQ. FT.



The developer (Anthem 585 Austin Developments LP) reserves the right to make changes and modifications to the information contained herein. Floorplans, floorplates and windows are subject to change without notice. Please contact a developer sales representative for details. E. & O.E. \*The size and configuration of the balcony or patio represent only a typical balcony or patio in the development. The actual size and configuration of the balcony or patio for any strata lot may vary from that set out in this floor plan. Please contact a developer sales representative for details.

# WYNWOOD GREEN

585 AUSTIN

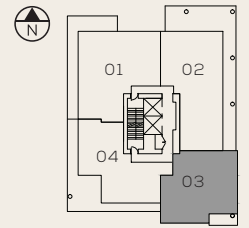
## PLAN PH3

2 BEDROOM + DEN + 2 BATH

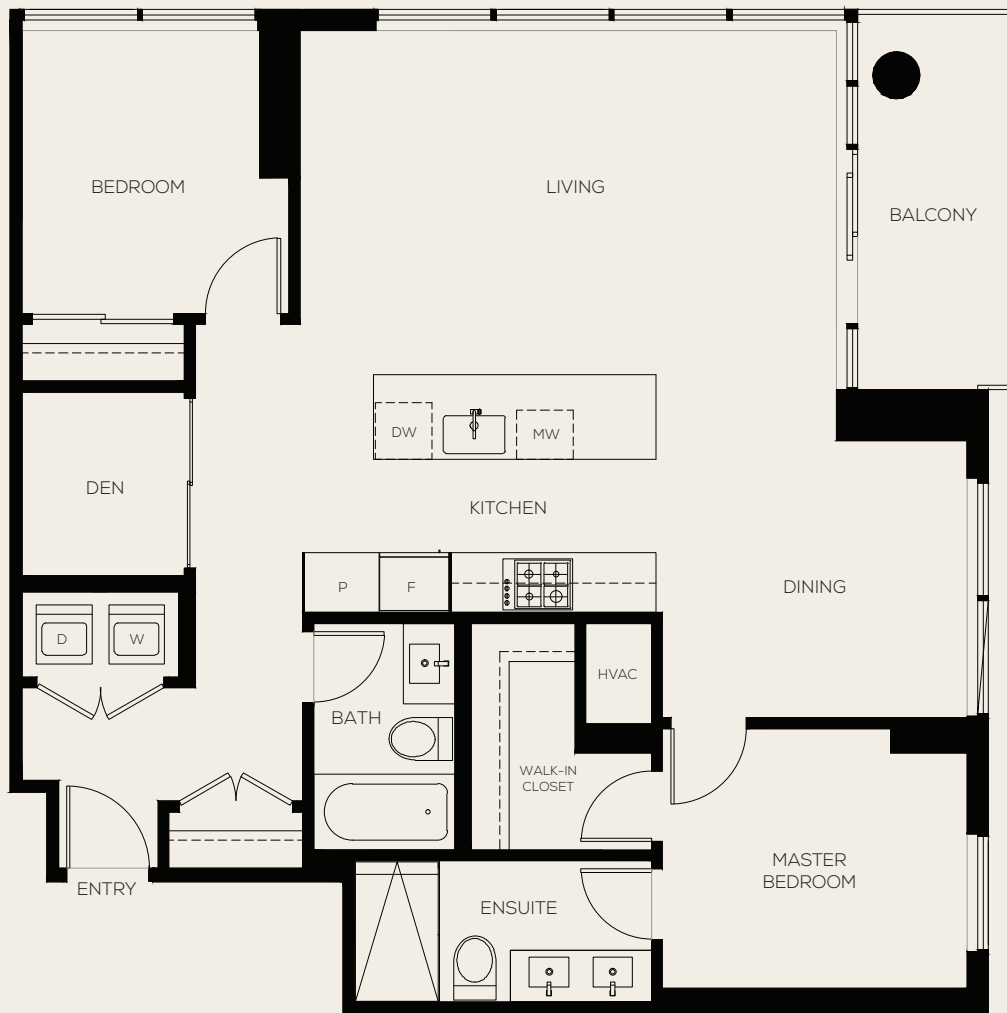
INTERIOR 1,106 SQ FT

EXTERIOR 78 SQ FT

TOTAL 1,184 SQ FT



LEVEL 23



The developer (Anthem 585 Austin Developments LP) reserves the right to make changes and modifications to the information contained herein. Floorplans, floorplates and windows are subject to change without notice. Please contact a developer sales representative for details. E. & O.E. \*The size and configuration of the balcony or patio represent only a typical balcony or patio in the development. The actual size and configuration of the balcony or patio for any strata lot may vary from that set out in this floor plan. Please contact a developer sales representative for details.

# WYNWOOD GREEN

585 AUSTIN

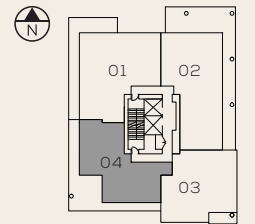
## PLAN PH4

2 BEDROOM + 2½ BATH

INTERIOR 1,096 SQ FT

EXTERIOR 529 SQ FT

TOTAL 1,625 SQ FT



LEVEL 23



WYNWOOD  
GREEN



595 AUSTIN AVE.

# WYNWOOD GREEN

595 AUSTIN

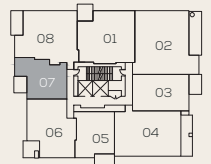
## PLAN A

1 BEDROOM + 1 BATH

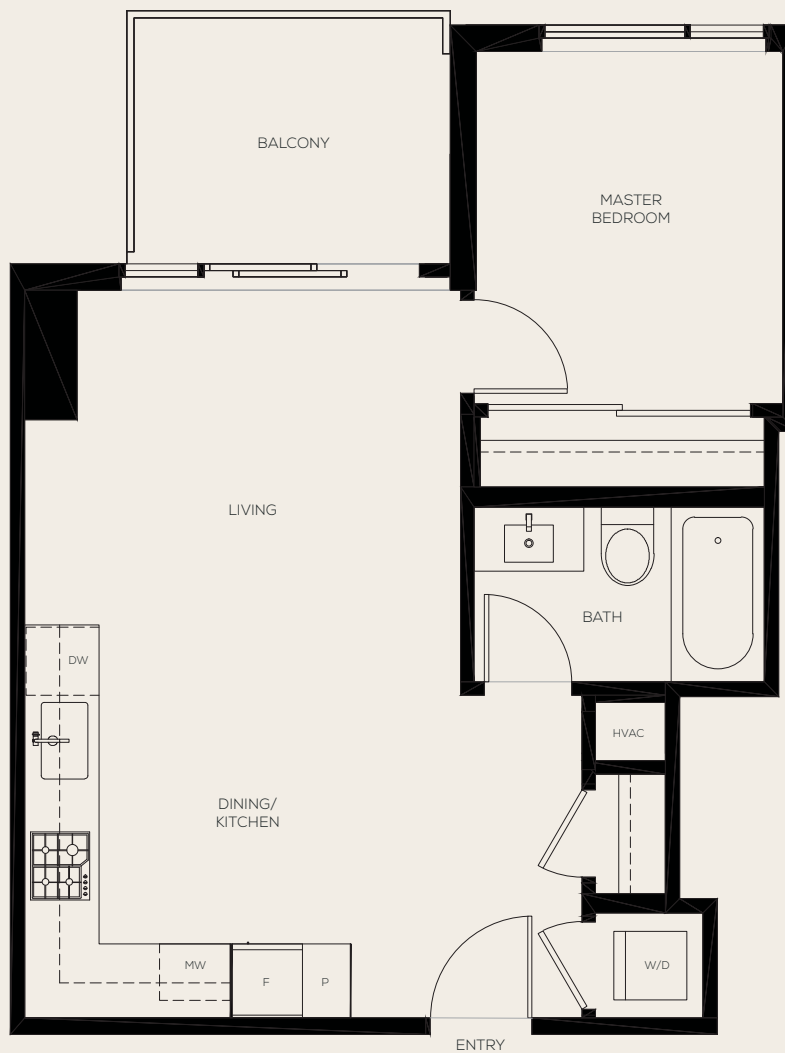
INTERIOR 522 SQ FT

EXTERIOR 69 SQ FT

TOTAL 591 SQ FT



LEVELS 3 - 26

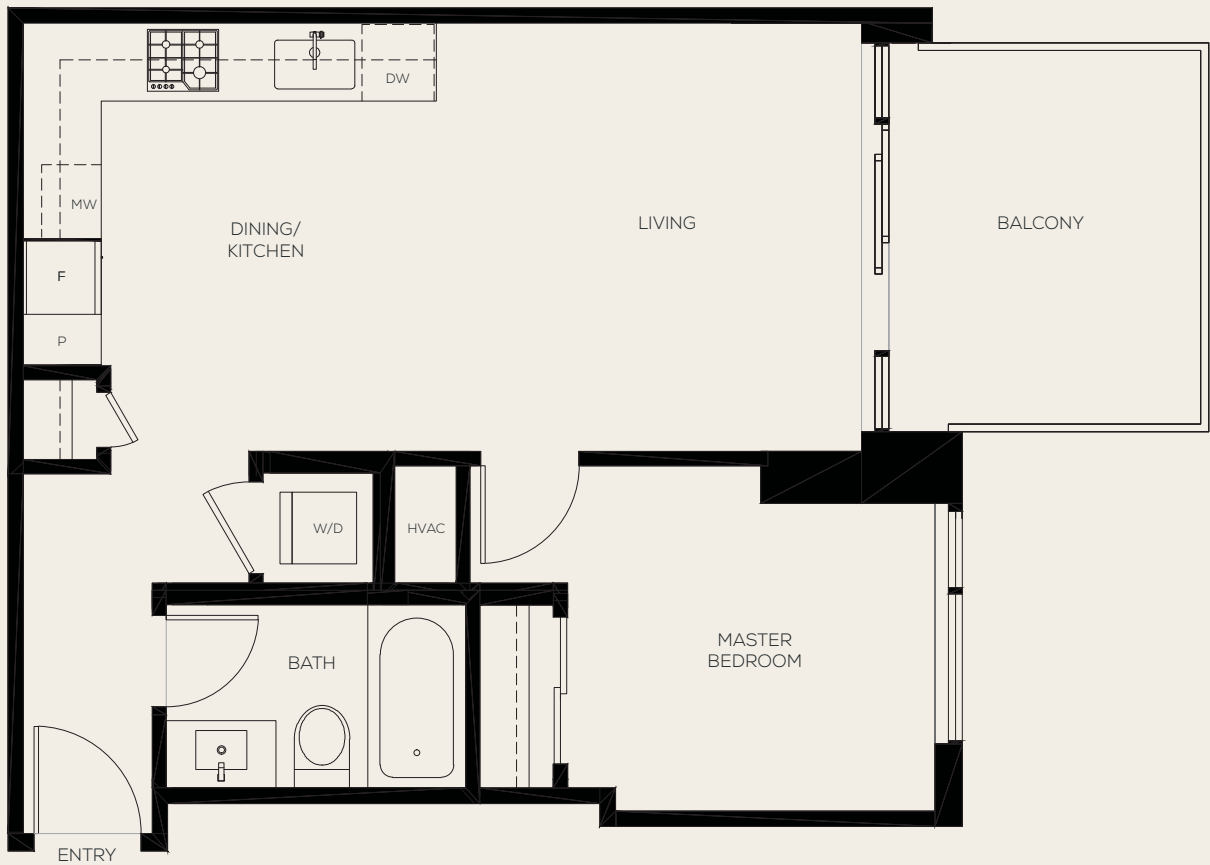
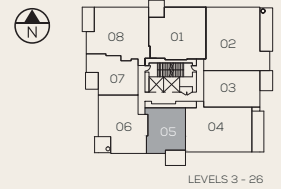


The developer (Anthem 585 Austin Developments LP) reserves the right to make changes and modifications to the information contained herein. Floorplans, floorplates and windows are subject to change without notice. Please contact a developer sales representative for details. E. & O.E. \*The size and configuration of the balcony or patio represent only a typical balcony or patio in the development. The actual size and configuration of the balcony or patio for any strata lot may vary from that set out in this floor plan. Please contact a developer sales representative for details.

# WYNWOOD GREEN

## 595 AUSTIN PLAN A3

1 BEDROOM + 1 BATH  
INTERIOR 561 SQ FT  
EXTERIOR 93 SQ FT  
TOTAL 654 SQ FT

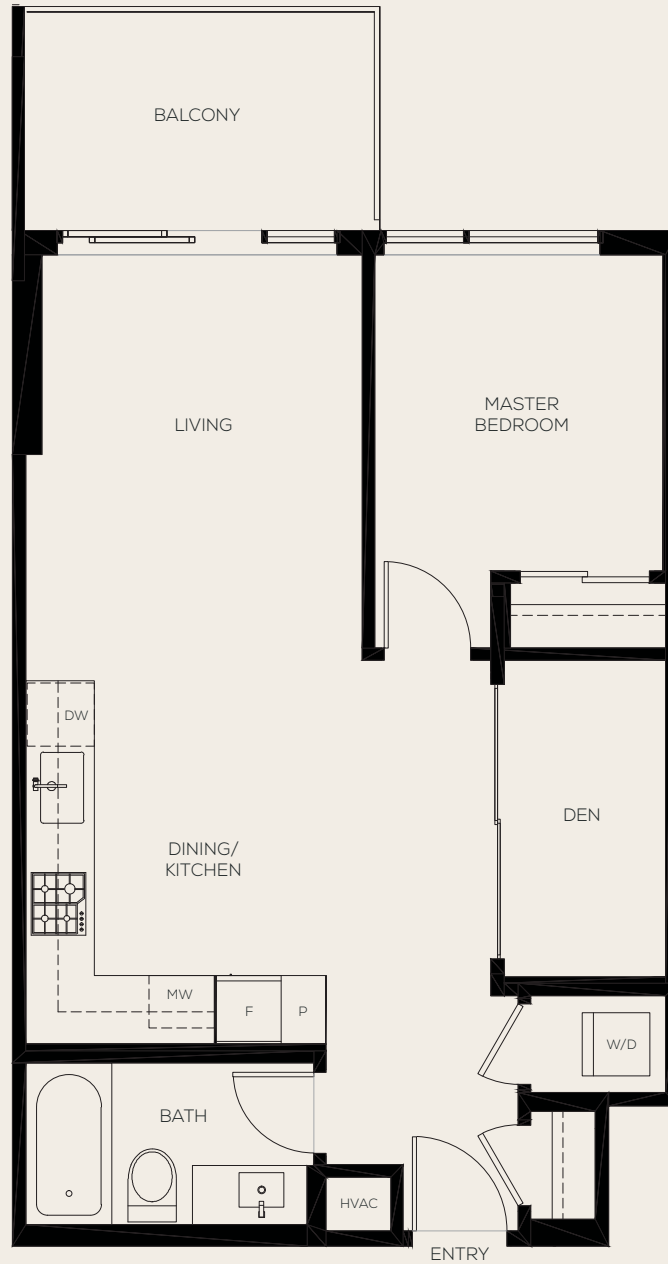
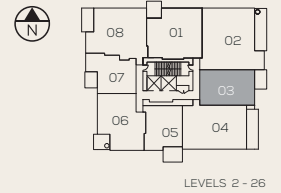


The developer (Anthem 585 Austin Developments LP) reserves the right to make changes and modifications to the information contained herein. Floorplans, floorplates and windows are subject to change without notice. Please contact a developer sales representative for details. E. & O.E. \*The size and configuration of the balcony or patio represent only a typical balcony or patio in the development. The actual size and configuration of the balcony or patio for any strata lot may vary from that set out in this floor plan. Please contact a developer sales representative for details.

# WYNWOOD GREEN

## 595 AUSTIN PLAN B

1 BEDROOM + DEN + 1 BATH  
INTERIOR 635 SQ. FT.  
EXTERIOR 81 SQ. FT.  
TOTAL 716 SQ. FT.



The developer (Anthem 585 Austin Developments LP) reserves the right to make changes and modifications to the information contained herein. Floorplans, floorplates and windows are subject to change without notice. Please contact a developer sales representative for details. E. & O.E. \*The size and configuration of the balcony or patio represent only a typical balcony or patio in the development. The actual size and configuration of the balcony or patio for any strata lot may vary from that set out in this floor plan. Please contact a developer sales representative for details.

# WYNWOOD GREEN

595 AUSTIN

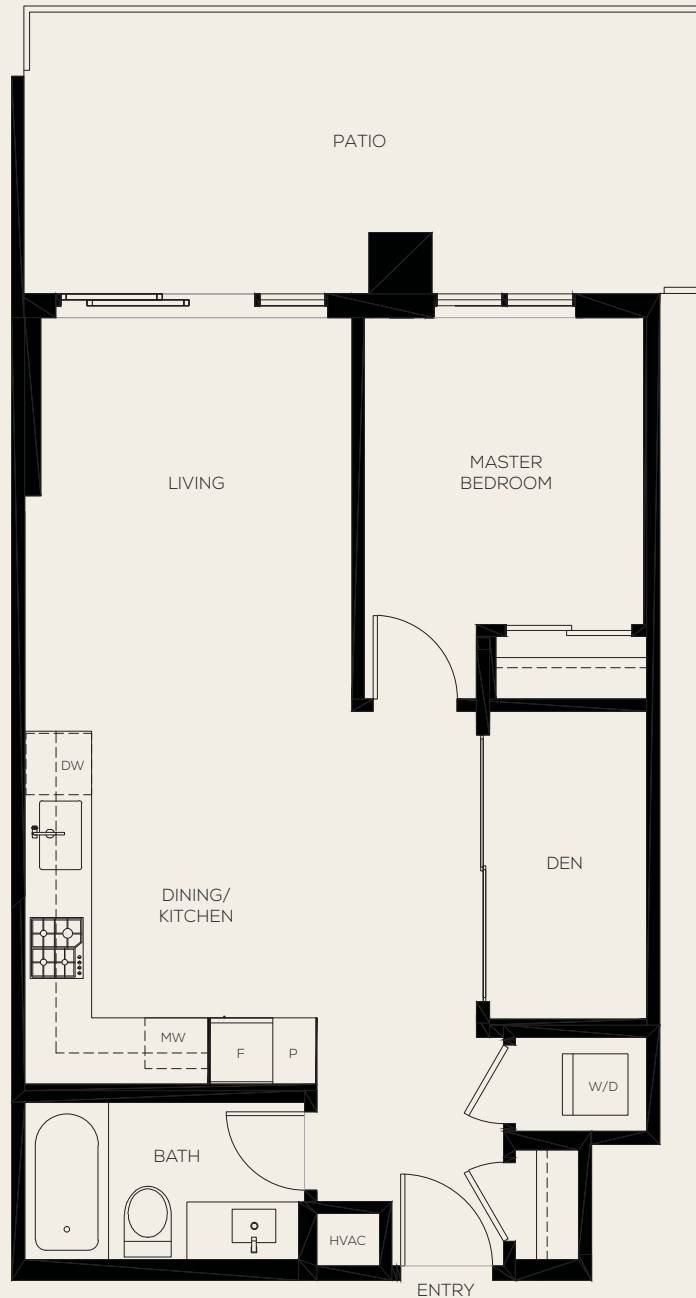
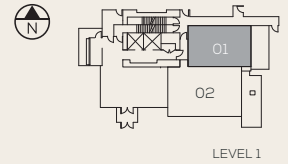
## PLAN B (ALT)

1 BEDROOM + DEN + 1 BATH

INTERIOR 631 SQ FT

EXTERIOR 213 SQ FT

TOTAL 844 SQ FT



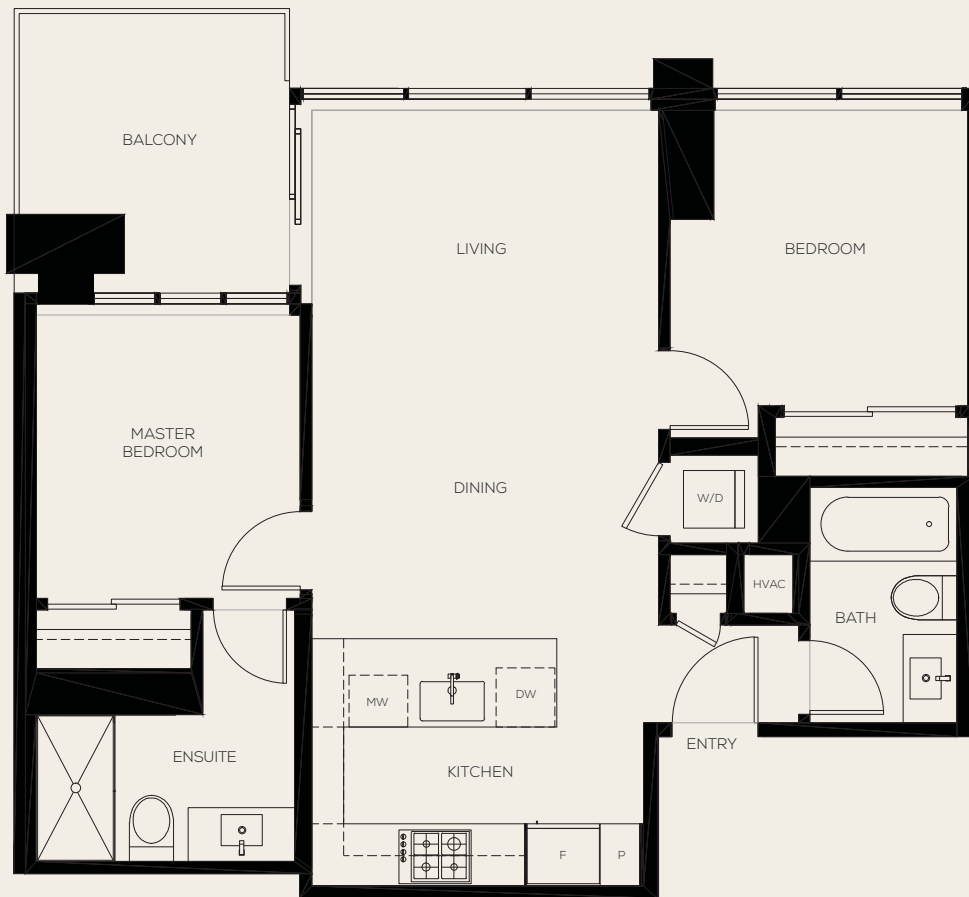
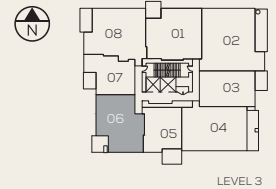
The developer (Anthem 585 Austin Developments LP) reserves the right to make changes and modifications to the information contained herein. Floorplans, floorplates and windows are subject to change without notice. Please contact a developer sales representative for details. E. & O.E. \*The size and configuration of the balcony or patio represent only a typical balcony or patio in the development. The actual size and configuration of the balcony or patio for any strata lot may vary from that set out in this floor plan. Please contact a developer sales representative for details.



# WYNWOOD GREEN

## 595 AUSTIN PLAN C1

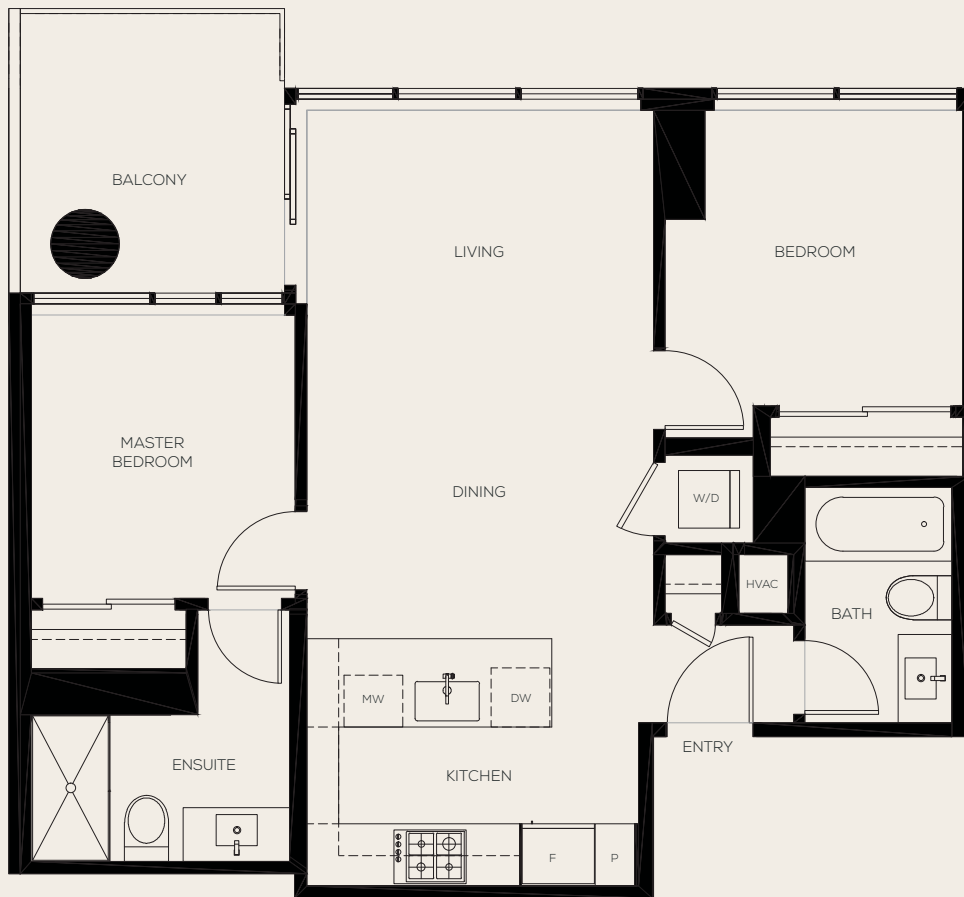
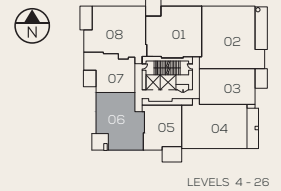
2 BEDROOM + 2 BATH  
INTERIOR 756 SQ FT  
EXTERIOR 90 SQ FT  
TOTAL 846 SQ FT



# WYNWOOD GREEN

## 595 AUSTIN PLAN C1

2 BEDROOM + 2 BATH  
INTERIOR 756 SQ FT  
EXTERIOR 90 SQ FT  
TOTAL 846 SQ FT

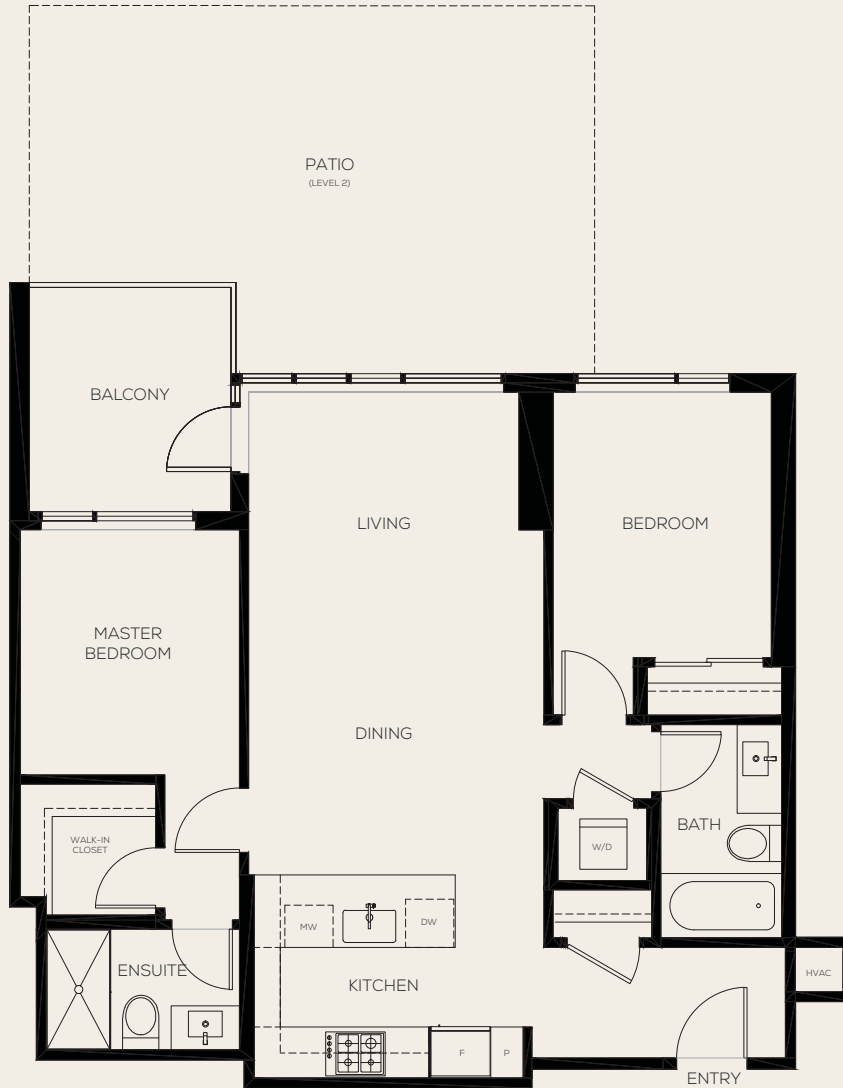
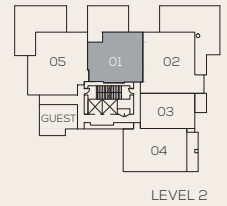
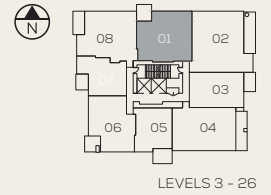


The developer (Anthem 585 Austin Developments LP) reserves the right to make changes and modifications to the information contained herein. Floorplans, floorplates and windows are subject to change without notice. Please contact a developer sales representative for details. E. & O.E. \*The size and configuration of the balcony or patio represent only a typical balcony or patio in the development. The actual size and configuration of the balcony or patio for any strata lot may vary from that set out in this floor plan. Please contact a developer sales representative for details.

# WYNWOOD GREEN

## 595 AUSTIN PLAN C3

2 BEDROOM + 2 BATH  
 INTERIOR 900 SQ FT  
 EXTERIOR 86 - 413 SQ FT  
 TOTAL 986 - 1313 SQ FT

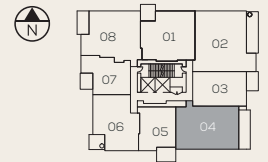


The developer (Anthem 585 Austin Developments LP) reserves the right to make changes and modifications to the information contained herein. Floorplans, floorplates and windows are subject to change without notice. Please contact a developer sales representative for details. E. & O.E. \*The size and configuration of the balcony or patio represent only a typical balcony or patio in the development. The actual size and configuration of the balcony or patio for any strata lot may vary from that set out in this floor plan. Please contact a developer sales representative for details.

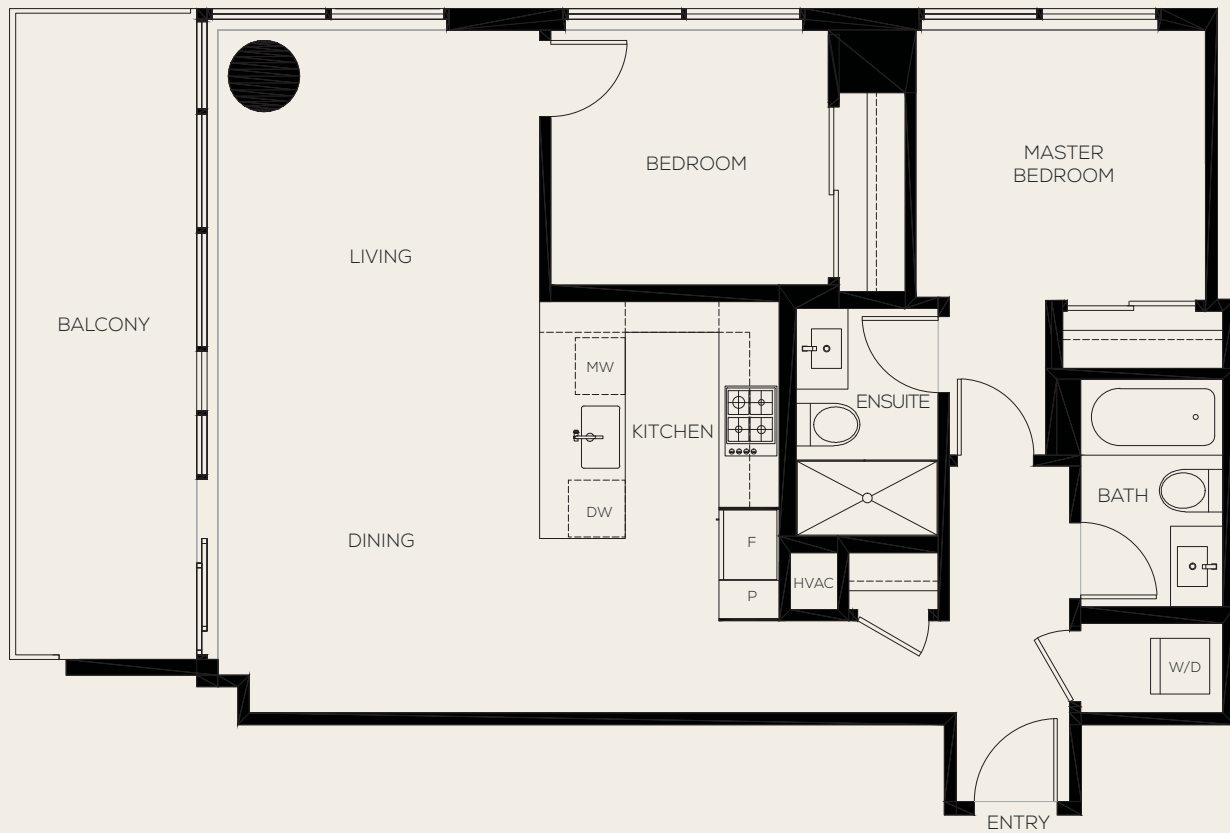
# WYNWOOD GREEN

## 595 AUSTIN PLAN C5

2 BEDROOM + 2 BATH  
INTERIOR 924 SQ FT  
EXTERIOR 158 SQ FT  
TOTAL 1,082 SQ FT



LEVELS 4 - 26



The developer (Anthem 585 Austin Developments LP) reserves the right to make changes and modifications to the information contained herein. Floorplans, floorplates and windows are subject to change without notice. Please contact a developer sales representative for details. E. & O.E. \*The size and configuration of the balcony or patio represent only a typical balcony or patio in the development. The actual size and configuration of the balcony or patio for any strata lot may vary from that set out in this floor plan. Please contact a developer sales representative for details.

# WYNWOOD GREEN

595 AUSTIN

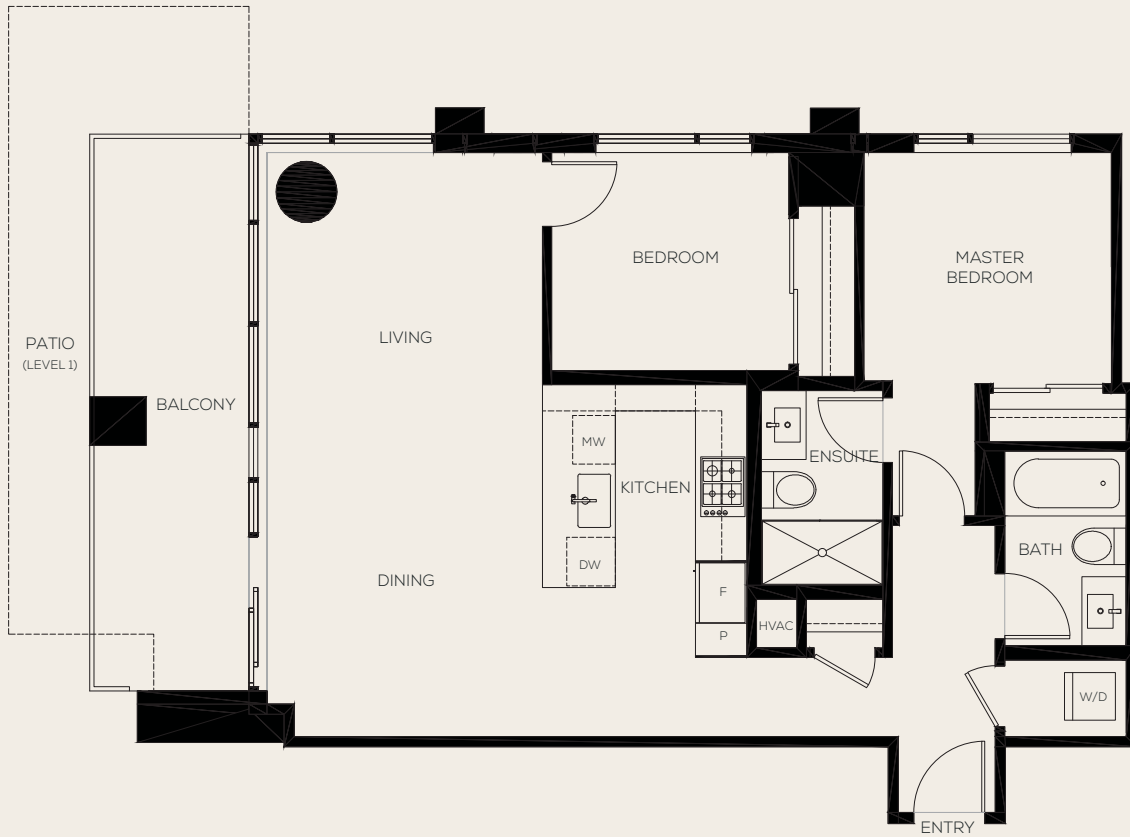
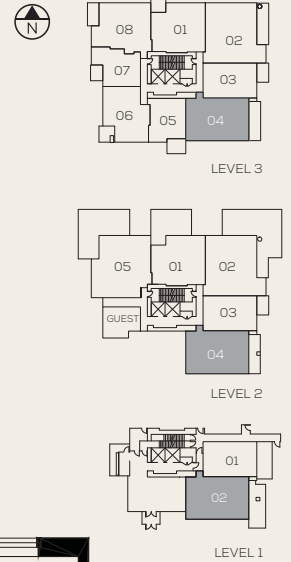
## PLAN C5 (ALT)

2 BEDROOM + 2 BATH

INTERIOR 924 SQ FT

EXTERIOR 158 - 293 SQ FT

TOTAL 1,082 - 1,217 SQ FT



The developer (Anthem 585 Austin Developments LP) reserves the right to make changes and modifications to the information contained herein. Floorplans, floorplates and windows are subject to change without notice. Please contact a developer sales representative for details. E. & O.E. \*The size and configuration of the balcony or patio represent only a typical balcony or patio in the development. The actual size and configuration of the balcony or patio for any strata lot may vary from that set out in this floor plan. Please contact a developer sales representative for details.

# WYNWOOD GREEN

595 AUSTIN

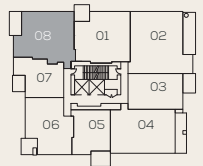
## PLAN D1

2 BEDROOM + DEN + 2 BATH

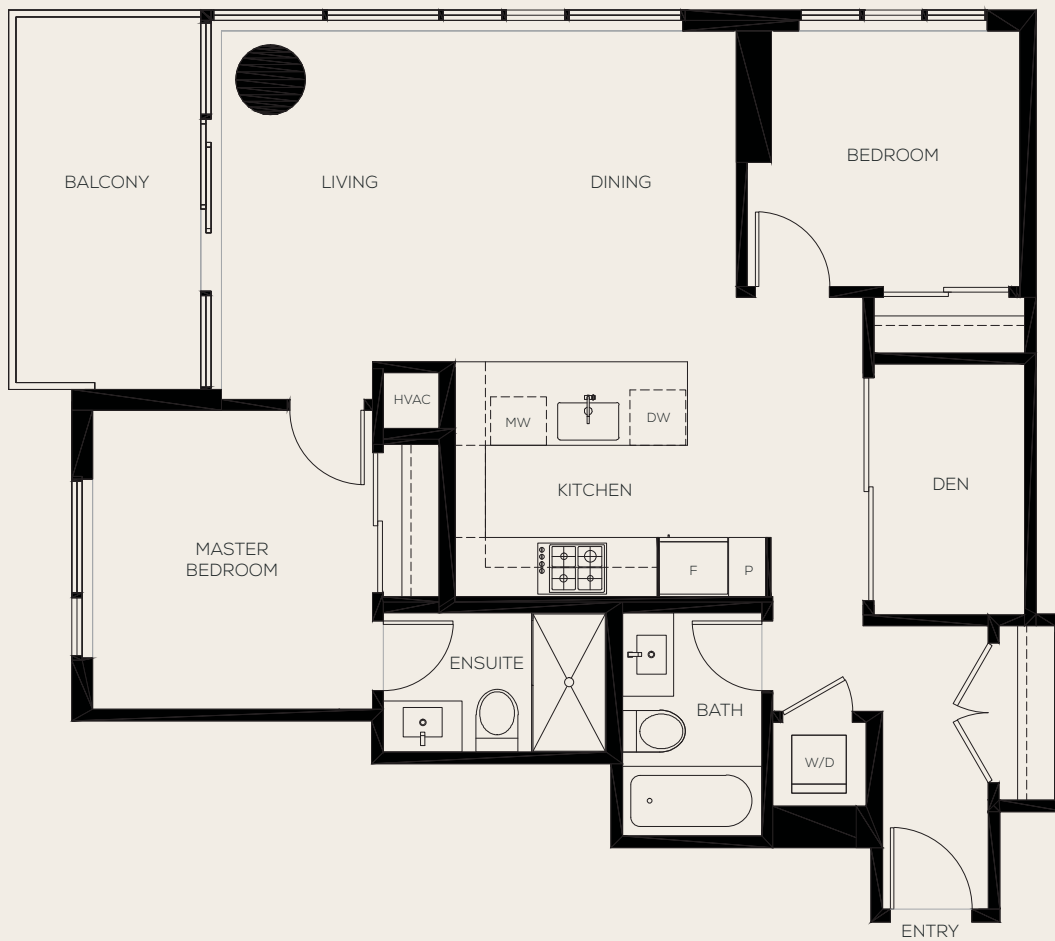
INTERIOR 911 SQ FT

EXTERIOR 95 SQ FT

TOTAL 1,006 SQ FT



LEVELS 3 - 26



The developer (Anthem 585 Austin Developments LP) reserves the right to make changes and modifications to the information contained herein. Floorplans, floorplates and windows are subject to change without notice. Please contact a developer sales representative for details. E. & O.E. \*The size and configuration of the balcony or patio represent only a typical balcony or patio in the development. The actual size and configuration of the balcony or patio for any strata lot may vary from that set out in this floor plan. Please contact a developer sales representative for details.

# WYNWOOD GREEN

595 AUSTIN

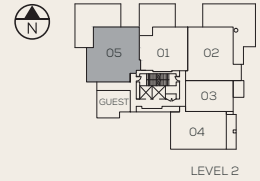
## PLAN E1

3 BEDROOM + 2 BATH

INTERIOR 1,150 SQ FT

EXTERIOR 634 SQ FT

TOTAL 1,784 SQ FT



The developer (Anthem 585 Austin Developments LP) reserves the right to make changes and modifications to the information contained herein. Floorplans, floorplates and windows are subject to change without notice. Please contact a developer sales representative for details. E. & O.E. \*The size and configuration of the balcony or patio represent only a typical balcony or patio in the development. The actual size and configuration of the balcony or patio for any strata lot may vary from that set out in this floor plan. Please contact a developer sales representative for details.

# WYNWOOD GREEN

595 AUSTIN

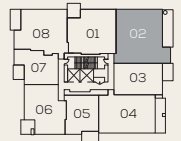
## PLAN F1

3 BEDROOM + 2 BATH

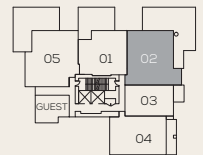
INTERIOR 1,108 SQ FT

EXTERIOR 173 - 793 SQ FT

TOTAL 1,281 - 1,901 SQ FT



LEVELS 3 - 26



LEVEL 2



The developer (Anthem 585 Austin Developments LP) reserves the right to make changes and modifications to the information contained herein. Floorplans, floorplates and windows are subject to change without notice. Please contact a developer sales representative for details. E. & O.E. \*The size and configuration of the balcony or patio represent only a typical balcony or patio in the development. The actual size and configuration of the balcony or patio for any strata lot may vary from that set out in this floor plan. Please contact a developer sales representative for details.



# WYNWOOD GREEN

595 AUSTIN

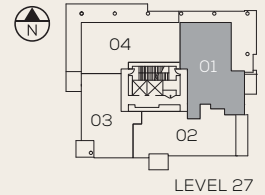
## PLAN SPH1

3 BEDROOM + DEN + 3½ BATH

INTERIOR 1,439 SQ. FT.

EXTERIOR 741 SQ. FT.

TOTAL 2,180 SQ. FT.



The developer (Anthem 585 Austin Developments LP) reserves the right to make changes and modifications to the information contained herein. Floorplans, floorplates and windows are subject to change without notice. Please contact a developer sales representative for details. E. & O.E. \*The size and configuration of the balcony or patio represent only a typical balcony or patio in the development. The actual size and configuration of the balcony or patio for any strata lot may vary from that set out in this floor plan. Please contact a developer sales representative for details.

# WYNWOOD GREEN

595 AUSTIN

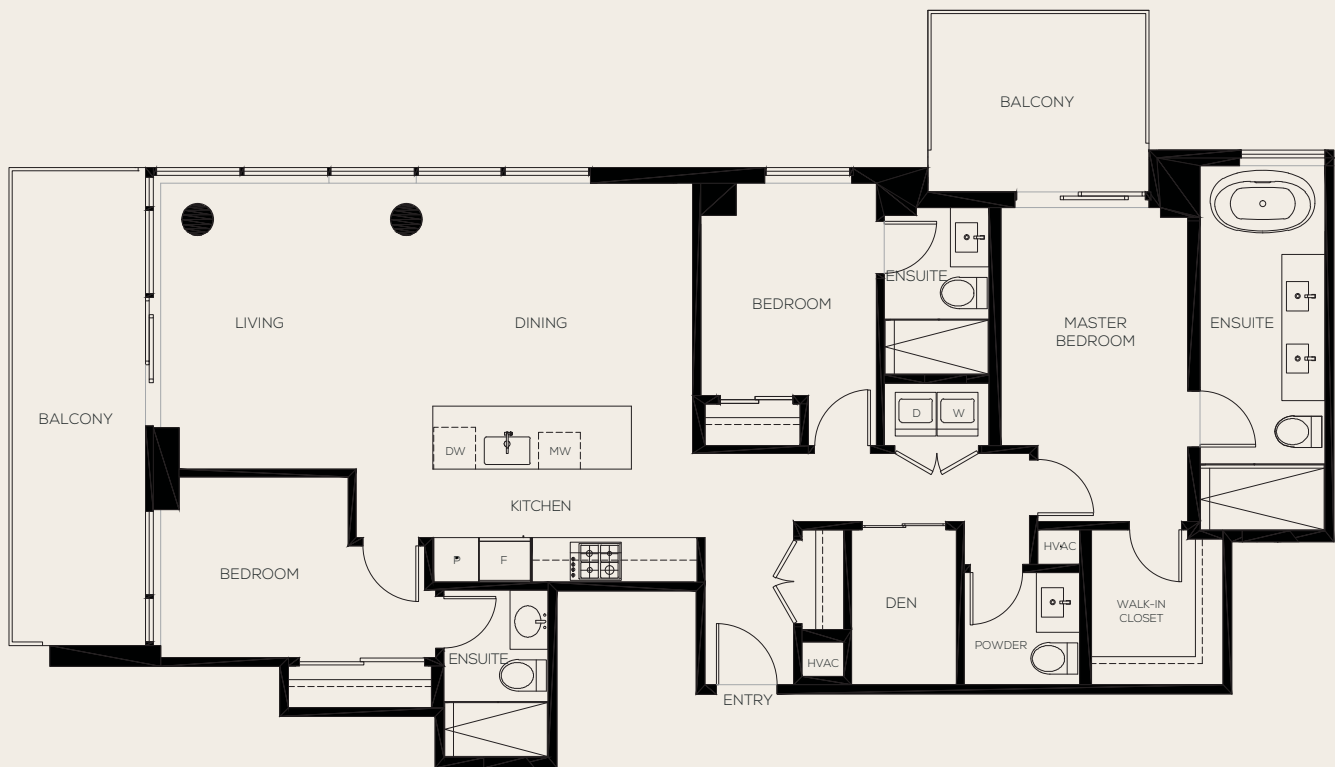
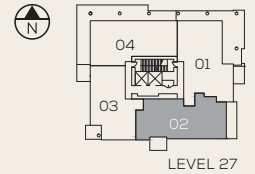
## PLAN SPH2

3 BEDROOM + DEN + 3½ BATH

INTERIOR 1,371 SQ FT

EXTERIOR 250 SQ FT

TOTAL 1,621 SQ FT



The developer (Anthem 585 Austin Developments LP) reserves the right to make changes and modifications to the information contained herein. Floorplans, floorplates and windows are subject to change without notice. Please contact a developer sales representative for details. E. & O.E. \*The size and configuration of the balcony or patio represent only a typical balcony or patio in the development. The actual size and configuration of the balcony or patio for any strata lot may vary from that set out in this floor plan. Please contact a developer sales representative for details.

# WYNWOOD GREEN

595 AUSTIN

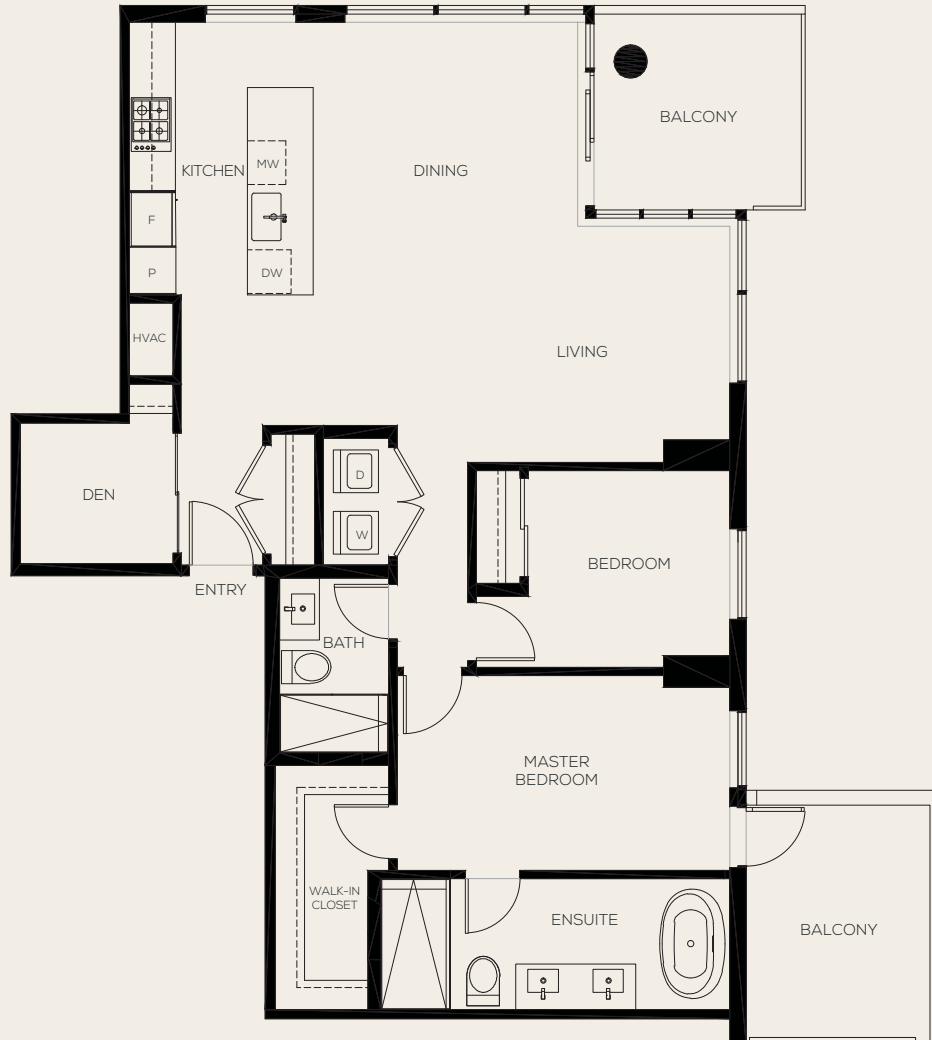
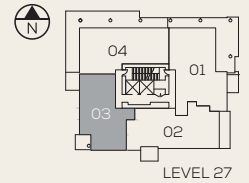
## PLAN SPH3

2 BEDROOM + DEN + 2 BATH

INTERIOR 1,151 SQ FT

EXTERIOR 189 SQ FT

TOTAL 1,340 SQ FT



The developer (Anthem 585 Austin Developments LP) reserves the right to make changes and modifications to the information contained herein. Floorplans, floorplates and windows are subject to change without notice. Please contact a developer sales representative for details. E. & O.E. \*The size and configuration of the balcony or patio represent only a typical balcony or patio in the development. The actual size and configuration of the balcony or patio for any strata lot may vary from that set out in this floor plan. Please contact a developer sales representative for details.

# WYNWOOD GREEN

595 AUSTIN

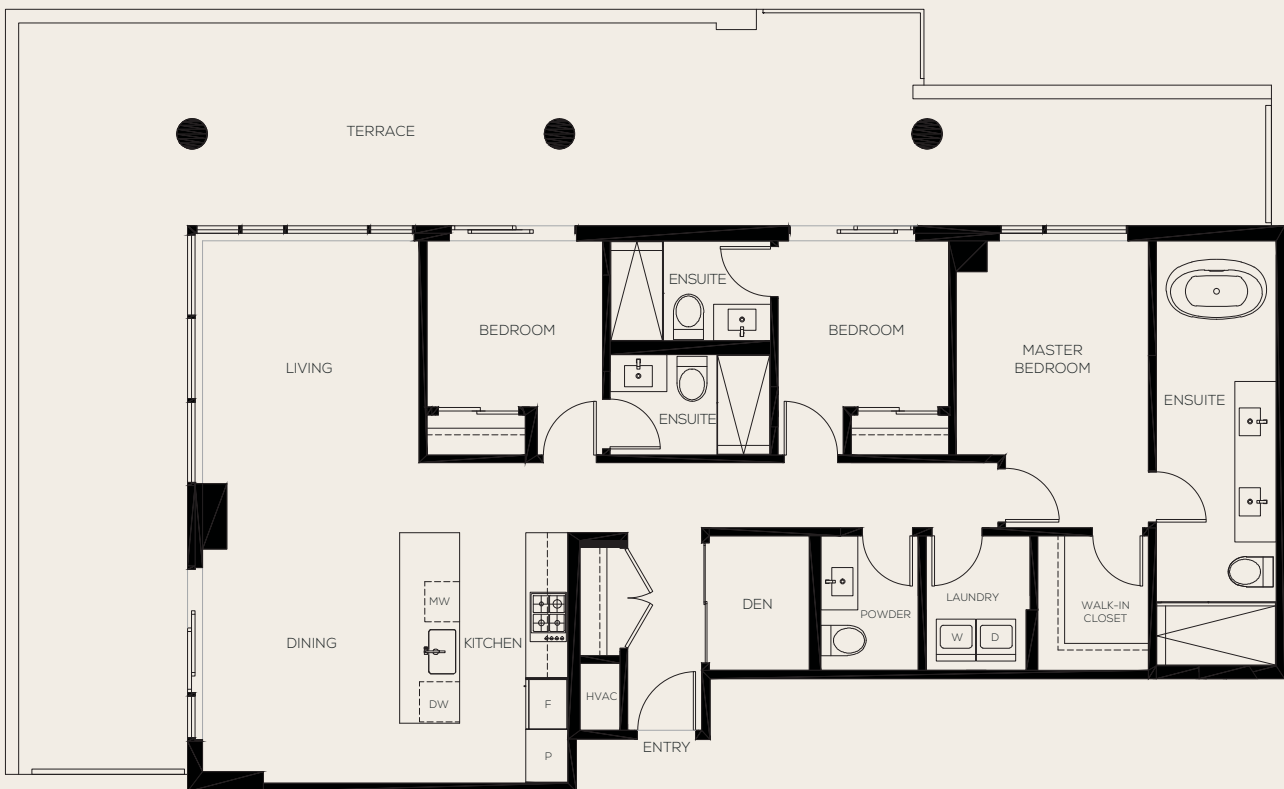
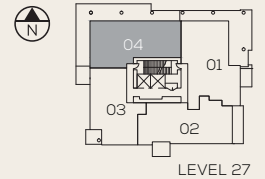
## PLAN SPH4

3 BEDROOM + DEN + 3½ BATH

INTERIOR 1,374 SQ FT

EXTERIOR 846 SQ FT

TOTAL 2,220 SQ FT



# WYNWOOD GREEN

595 AUSTIN

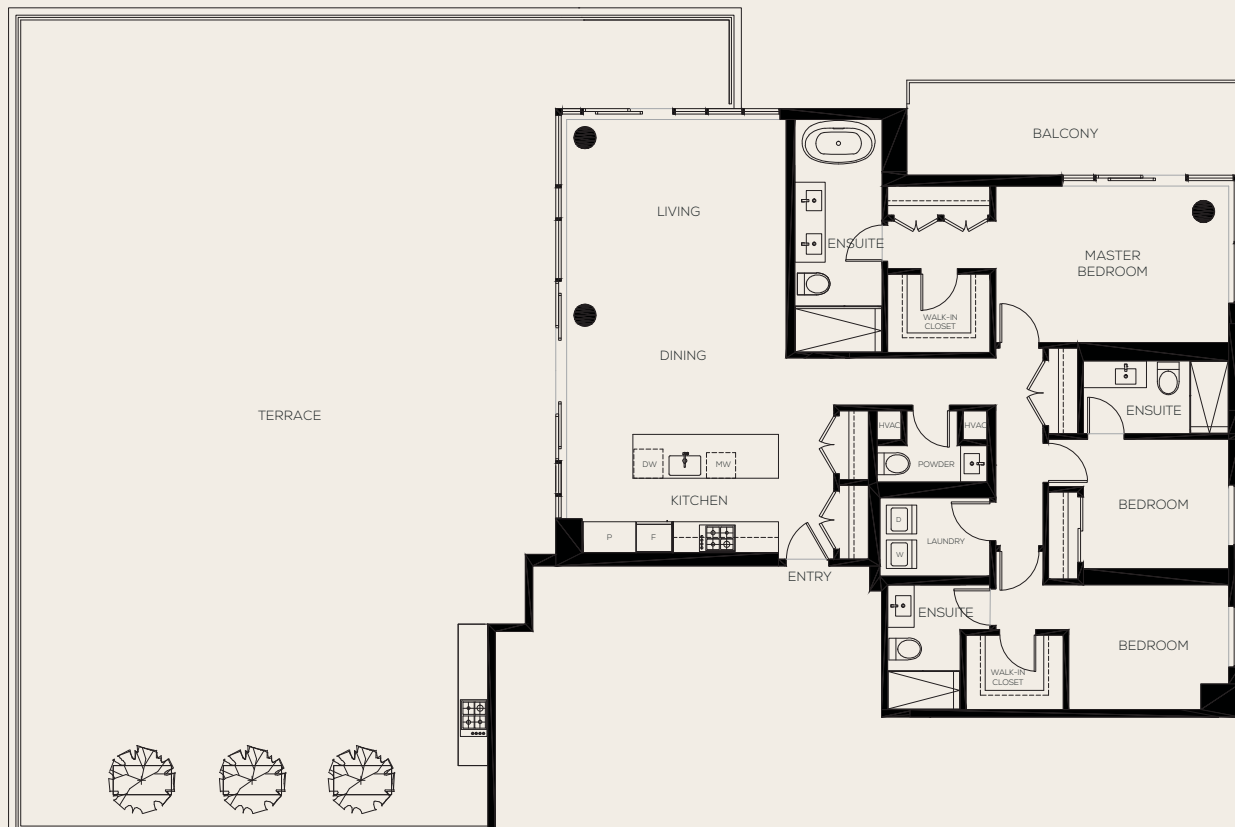
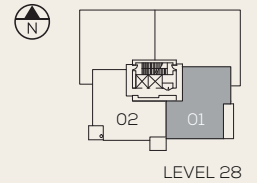
## PLAN PH1

3 BEDROOM + 3½ BATH

INTERIOR 1,603 SQ. FT.

EXTERIOR 2,283 SQ. FT.

TOTAL 3,886 SQ. FT.



The developer (Anthem 585 Austin Developments LP) reserves the right to make changes and modifications to the information contained herein. Floorplans, floorplates and windows are subject to change without notice. Please contact a developer sales representative for details. E. & O.E. \*The size and configuration of the balcony or patio represent only a typical balcony or patio in the development. The actual size and configuration of the balcony or patio for any strata lot may vary from that set out in this floor plan. Please contact a developer sales representative for details.

# WYNWOOD GREEN

595 AUSTIN

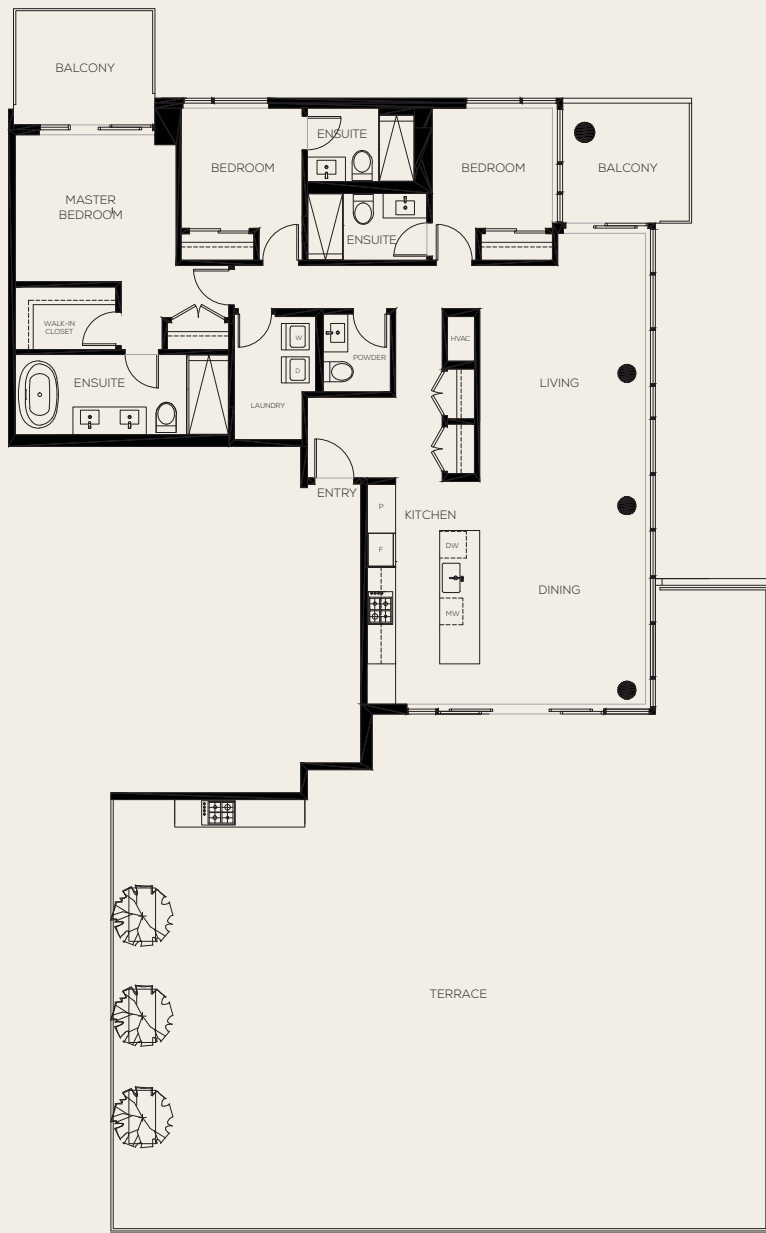
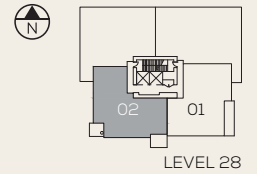
## PLAN PH2

3 BEDROOM + 3½ BATH

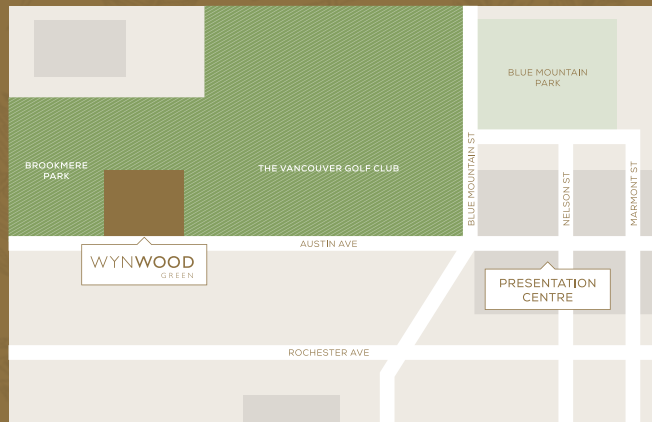
INTERIOR 1,613 SQ FT

EXTERIOR 2,117 SQ FT

TOTAL 3,730 SQ FT



# WYNWOOD GREEN



## PRESENTATION CENTRE

201, 1020 AUSTIN AVENUE, COQUITLAM, BC, V3K 3P1

MONDAY – SUNDAY, 12 – 5PM  
(CLOSED FRIDAYS)

E: [INFO@WYNWOODGREEN.CA](mailto:INFO@WYNWOODGREEN.CA)

|

T: 604 917 0176