

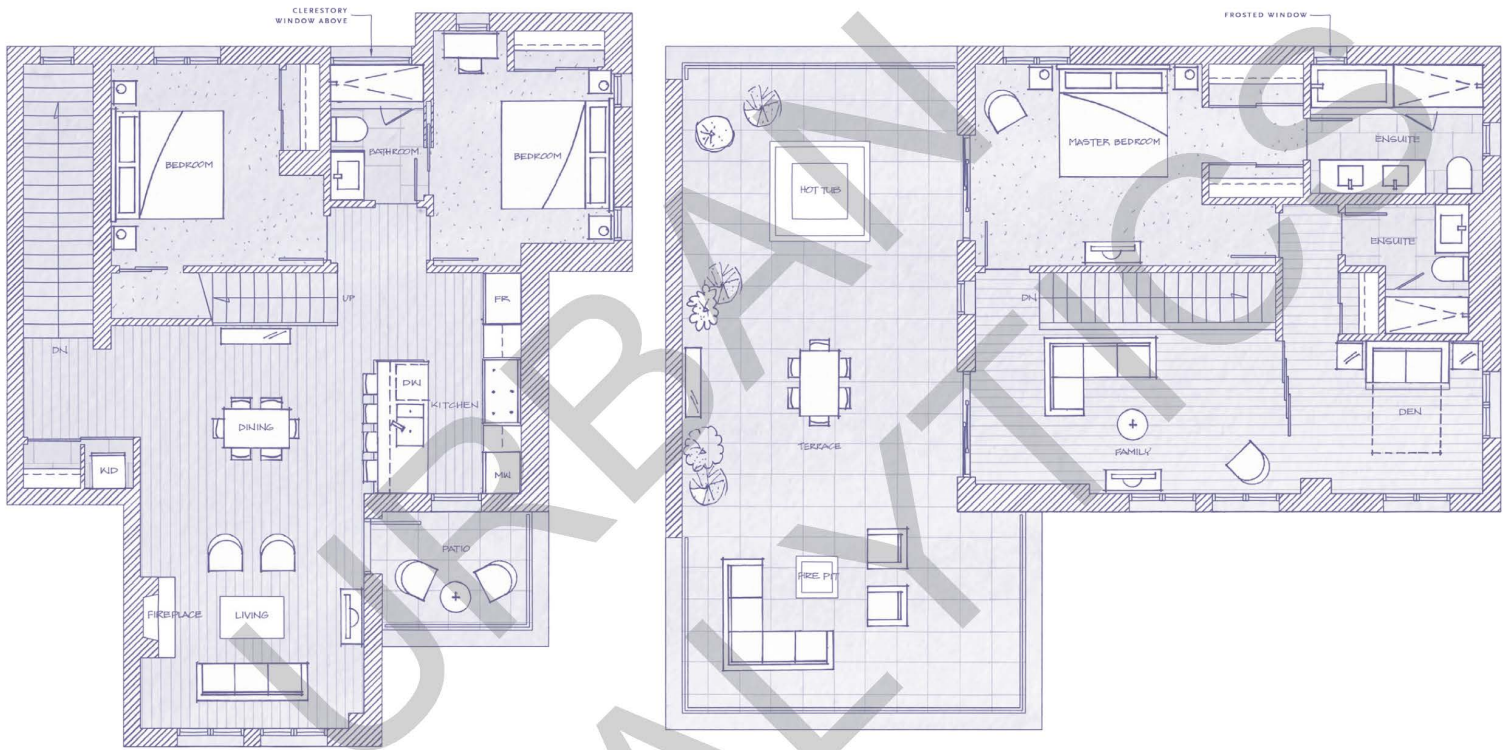
HORSESHOE BAY

CHERRY BLOSSOM VILLAS

PLATEAU D/4B **PLAN E1**

3 Bedroom + Family + Den / 2,932 sf Total Living

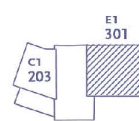
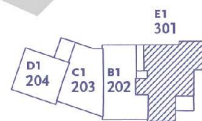
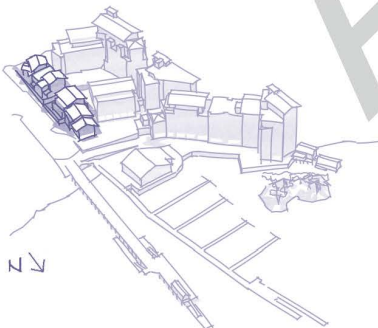
Patio + Terrace 760 sf



CHERRY BLOSSOM VILLAS

FLOOR 3

FLOOR 4



WEST VANCOUVER CANADA