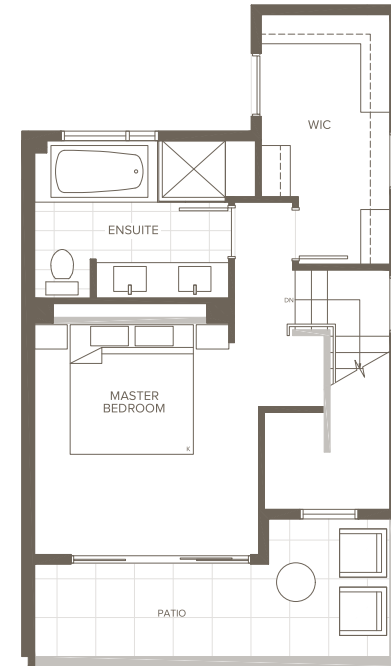
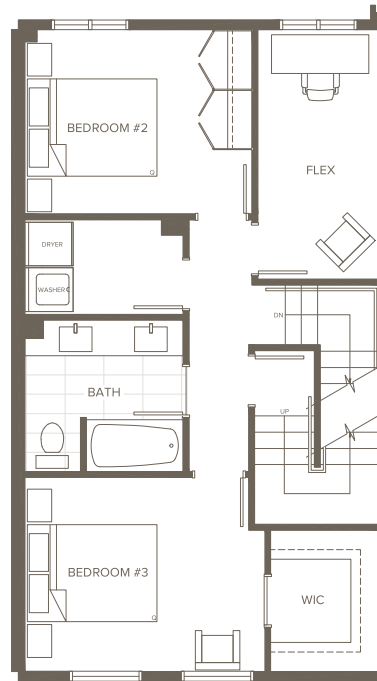
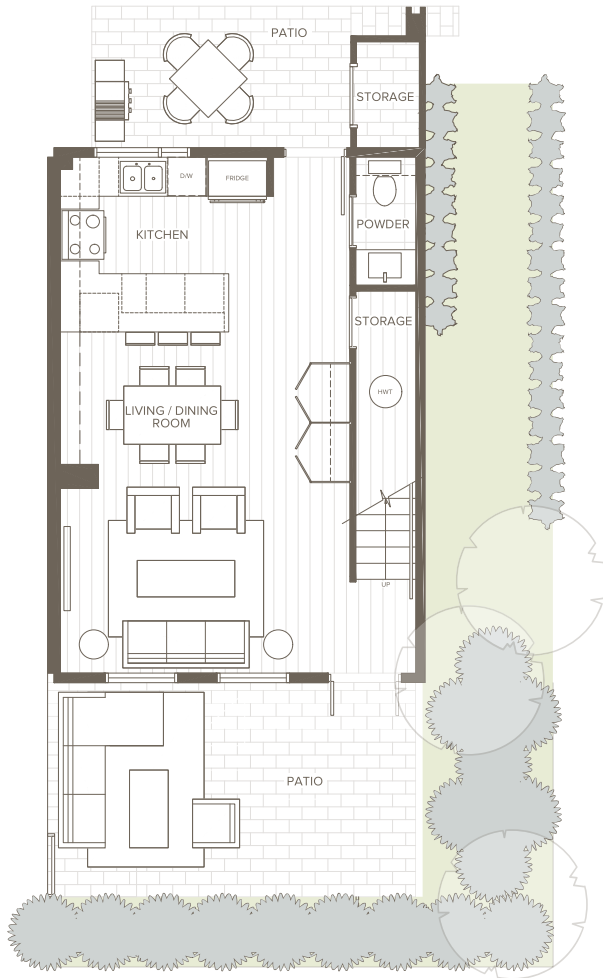


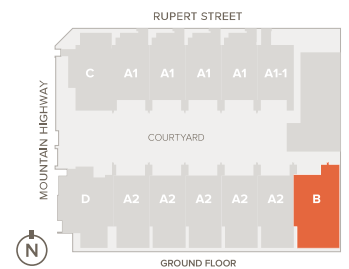
# Floorplans - Unit B

3 Bed + Den + 2.5 Bath

Living 1,640 sq. ft.  
 Patio 512 sq. ft.  
 Total 2,152 sq. ft.



## Courtyard Townhomes



Dimensions and square footage shown may vary. Areva Living reserves the right to modify design and specifications without notice. For additional information, please consult with a sales representative. E&O.E.