



TOWN



OF  
HOMES

OXFORD

QUEENSBOROUGH

Your Story Starts  
at Oxford.











## Quiet & Connected

### Dining

1. The Boathouse Restaurant
2. Cactus Club
3. Queensborough Pizza
4. MATCH Eatery & Public House
5. Steel & Oak Brewing Co.
6. Frankie G's Pub
7. Shang Noodle House
8. Epic Grill Silogs
9. Kirin Restaurant
10. Longtail Thai Kitchen
11. Tora Sushi
12. Nando's Flame Grilled Chicken
13. Boston Pizza
14. Burger Heaven
15. Cloud 9 Specialty Bakery

### Retail & Essentials

16. Queensborough Landing featuring over 50 shops and services including: Calvin Klein, Helly Hansen, Tommy Hilfiger and Bulk Barn
17. Metropolis at Metrotown
18. Columbia Square Plaza
19. Market Crossing Shopping Centre
20. New Westminster Smart Centre
21. River Market at the Quay
22. Royal City Centre
23. Wal-Mart Super Centre
24. Chinoy's Supermarket
25. Starbucks
26. Tim Hortons
27. BC Liquor Store
28. Save-On-Foods
29. Coast Capital Savings
30. Scotia Bank
31. RBC Royal Bank
32. Lowe's Home Improvement
33. Champagne Taste Home
34. Bunches & Blooms Floral

### Education

35. Merseyside Montessori
36. Urban Academy
37. Queen Elizabeth Elementary
38. John Knox Christian School – Elementary Campus
39. John Knox Christian School – Secondary Campus
40. Queensborough Middle School
41. New Westminster Secondary
42. Douglas College

### Community & Play

43. Queensborough Community Centre
44. Hamilton Community Centre
45. Old Schoolhouse Park
46. Waterfront Esplanade & Park
47. Queens Park
48. Moody Park Arena
49. Canada Games Pool
50. Landmark Cinema
51. Anytime Fitness
52. Crossfit
53. Oxygen Hot Yoga and Fitness
54. Limina Wellness Lounge & Spa
55. Dynamic Health and Fitness
56. Sugar Rays Boxing Gym
57. Fraser River Bike Tours and Rentals
58. Fraser Valley Discovery Centre
59. Anvil Centre
60. Starlight Casino
61. Lafflines Comedy Club
62. Mayfair Lakes Golf & Country Club

**SkyTrain**



**A**  
1,291 – 1,311 SQFT  
3 bedrooms  
2.5 bathrooms

**A1**  
1,320 – 1,334 SQFT  
3 bedrooms  
2.5 bathroom

**A1a**  
1,344 SQFT  
3 bedrooms  
2.5 bathrooms

**B**  
1,393 – 1,408 SQFT  
3 bedrooms  
2.5 bathrooms

**B1**  
1,424 – 1,439 SQFT  
3 bedrooms  
2.5 bathrooms

**B1a**  
1,432 – 1,460 SQFT  
3 bedrooms  
2.5 bathrooms

**C**  
1,459 – 1,463 SQFT  
3 bedrooms  
2.5 bathrooms

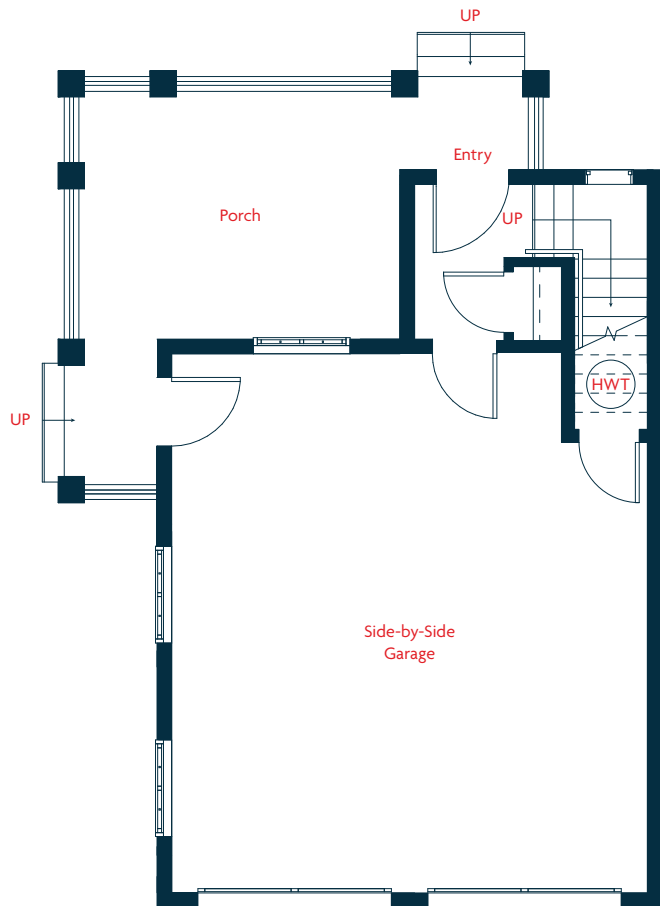
**D**  
1,469 – 1,490 SQFT  
3 bedrooms  
2.5 bathrooms



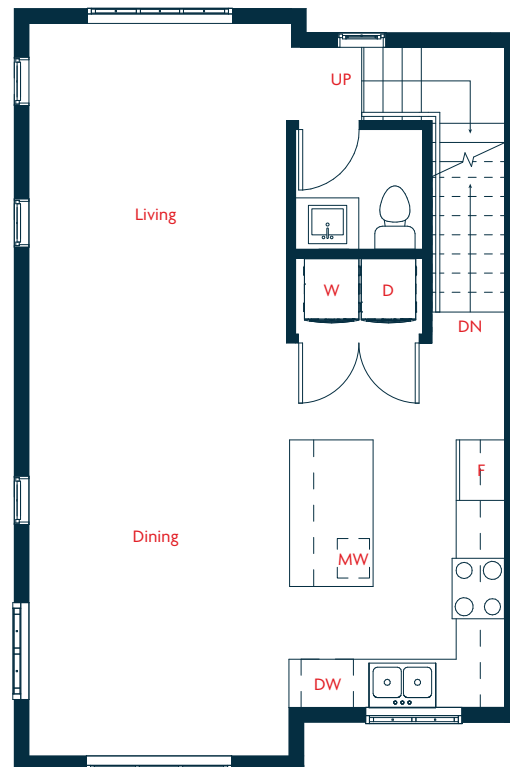


## Floorplan A

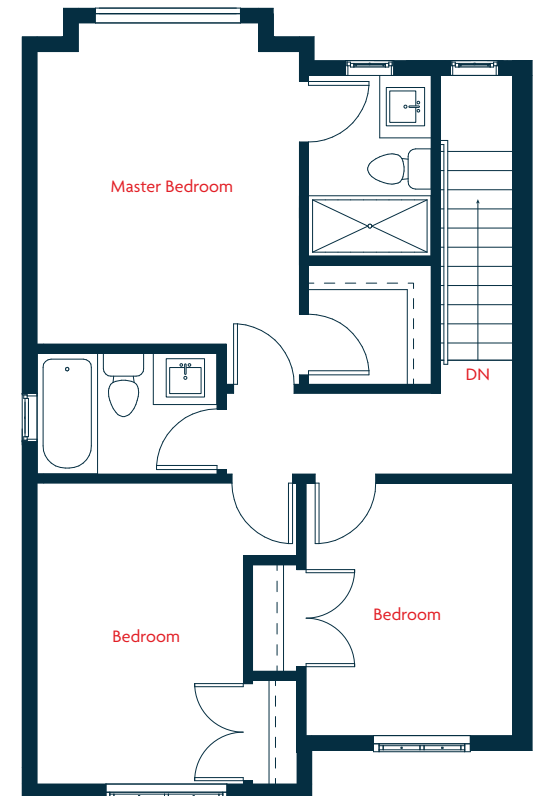
1,291 – 1,311 SQFT  
3 bedrooms  
2.5 bathrooms



Lower



Main

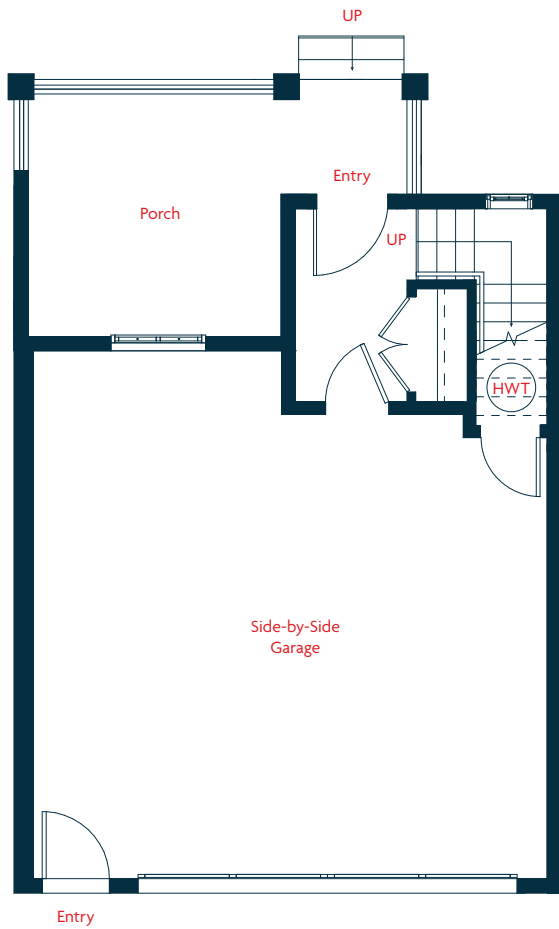


Upper

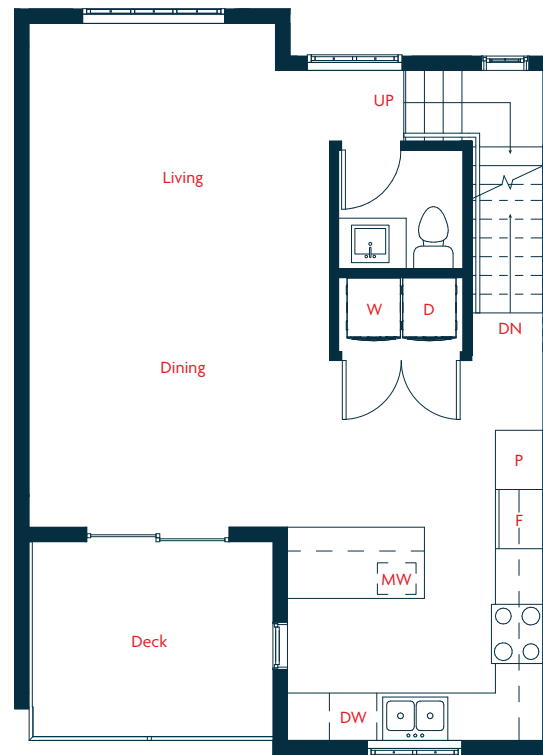


## Floorplan A1

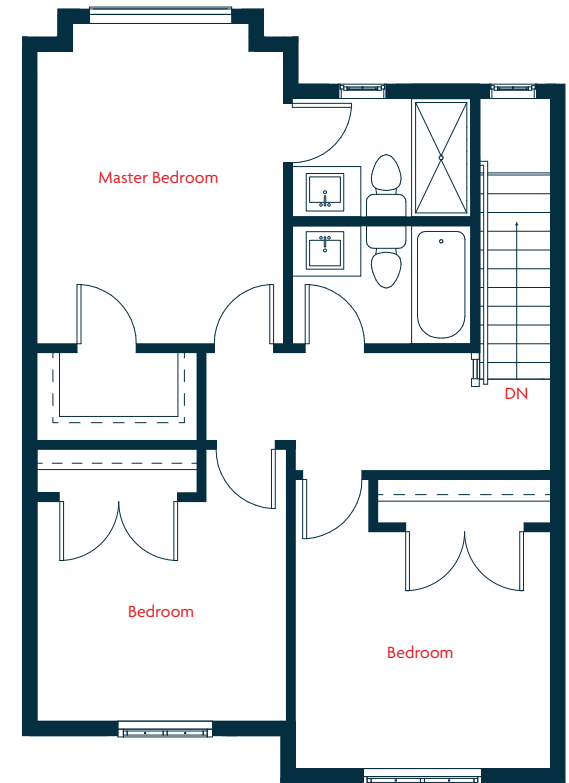
1,320 – 1,334 SQFT  
3 bedrooms  
2.5 bathrooms



Lower



Main

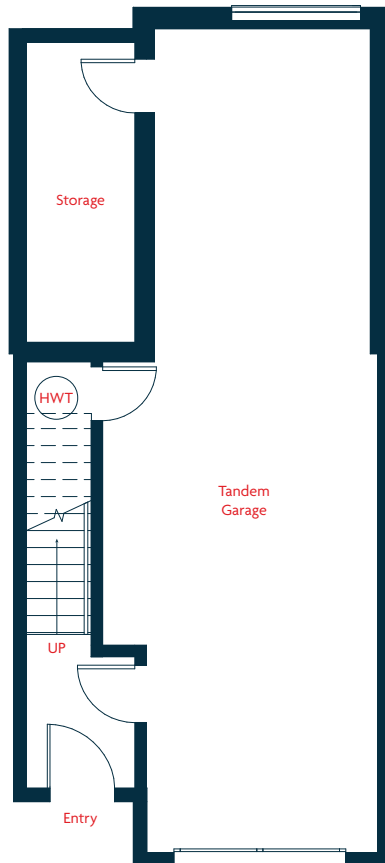


Upper

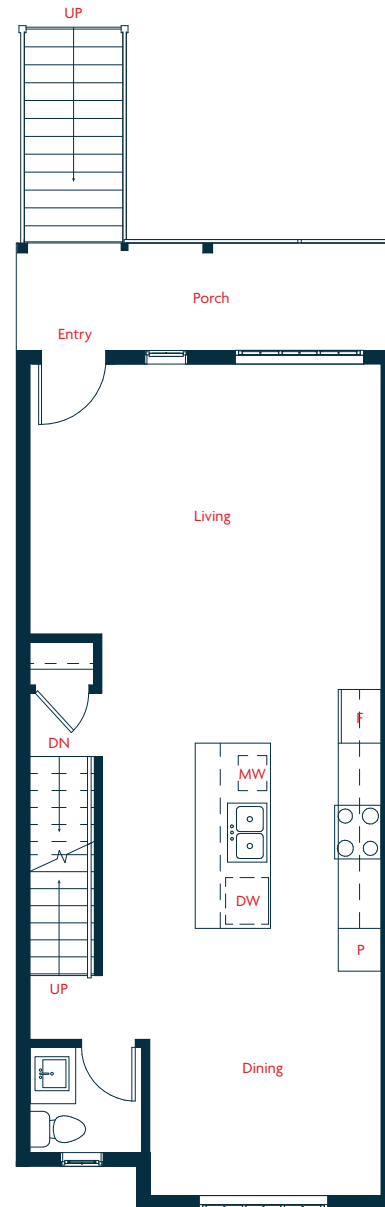


## Floorplan B

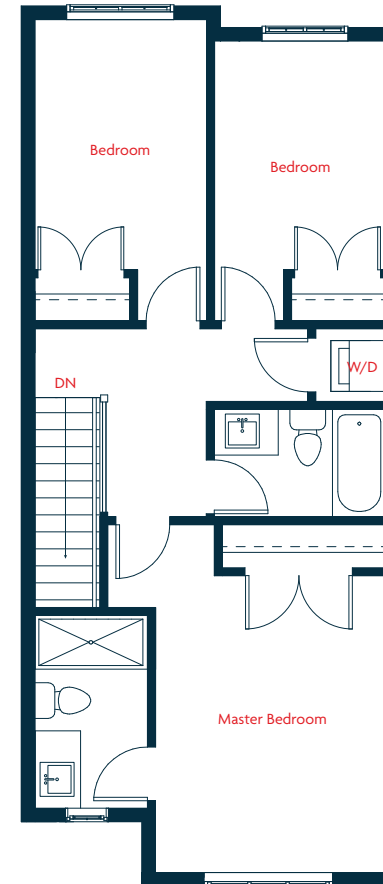
1,393 – 1,408 SQFT  
3 bedrooms  
2.5 bathrooms



Lower



Main



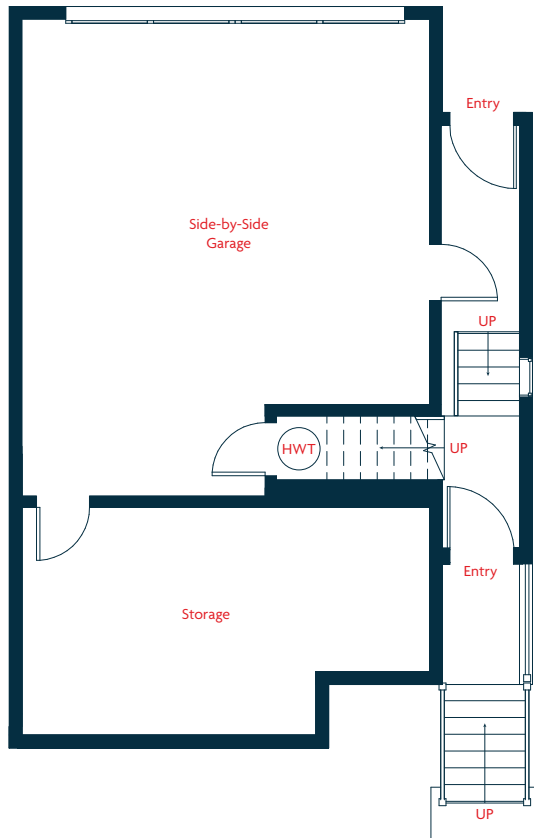
Upper



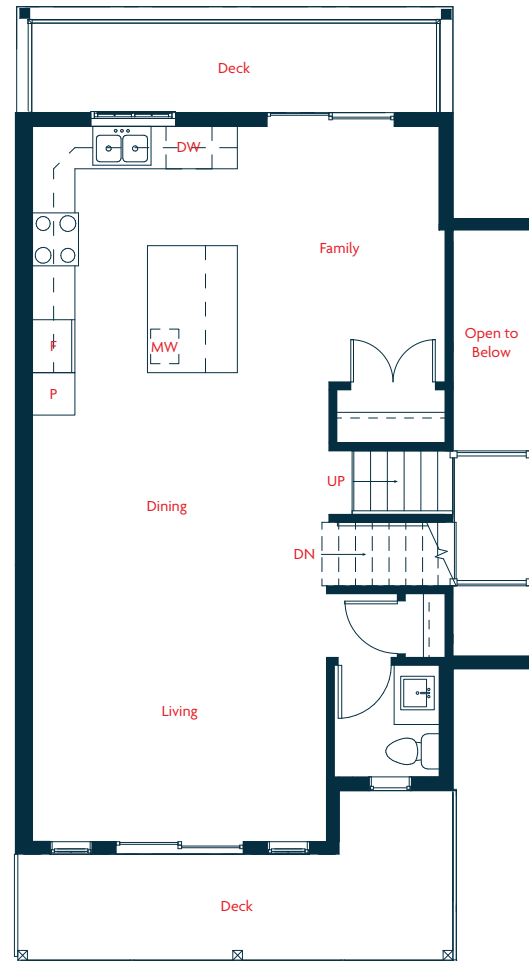


## Floorplan C

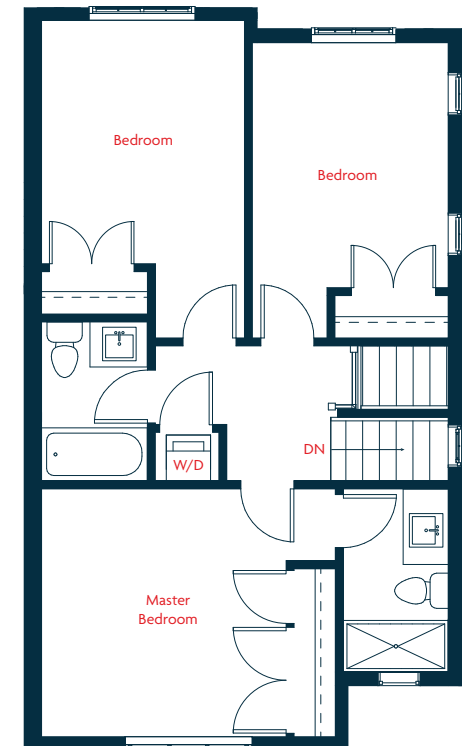
1,459 – 1,463 SQFT  
3 bedrooms  
2.5 bathrooms



Lower



Main

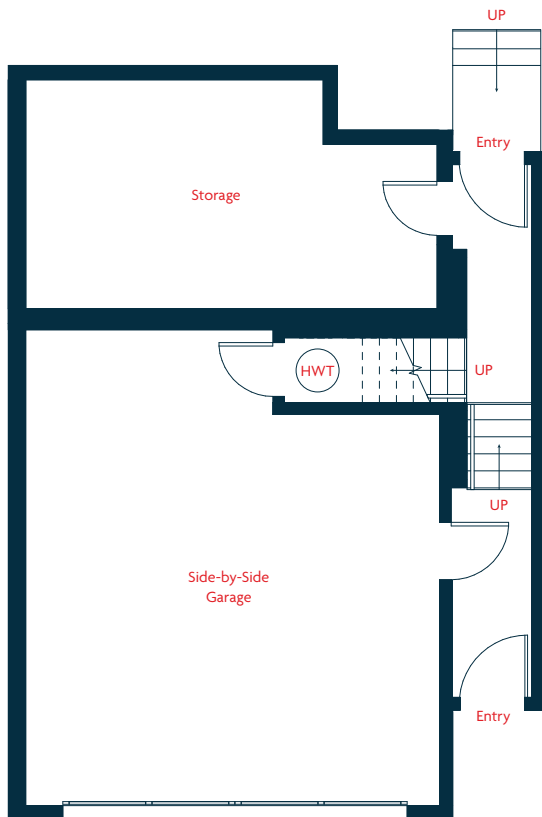


Upper

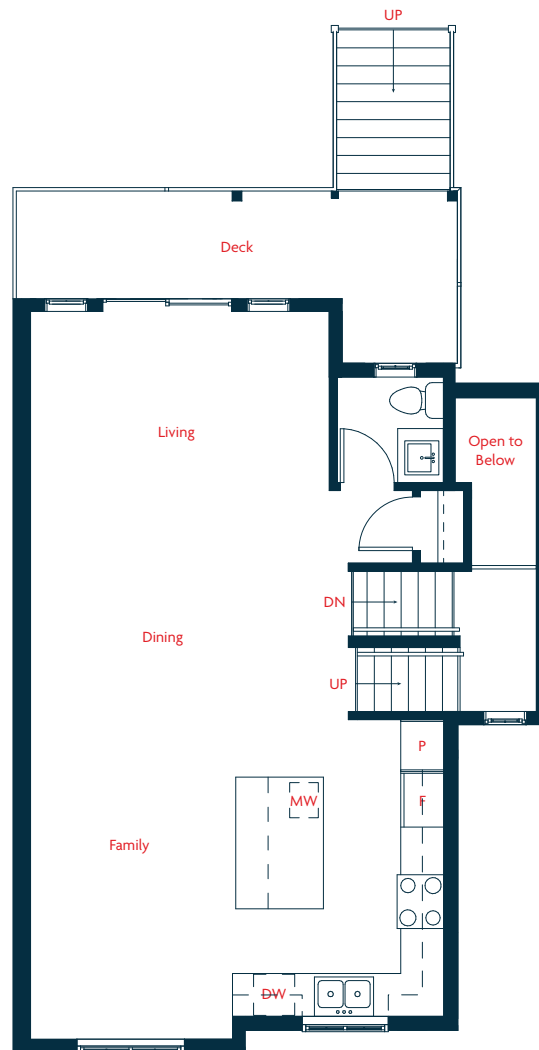


## Floorplan D

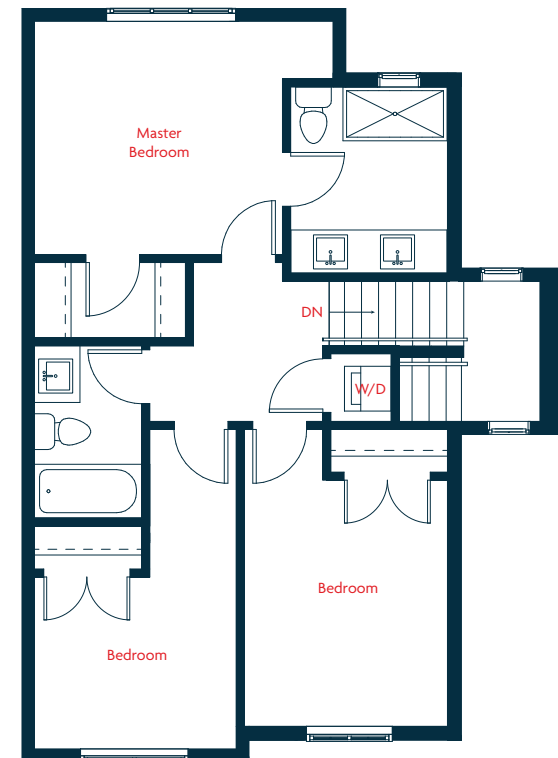
1,469 – 1,490 SQFT  
3 bedrooms  
2.5 bathrooms



Lower



Main



Upper





## Features

### Welcome to Luxury

- A boutique collection of 69 classic townhomes in a modern-village setting
- Beautiful outdoor amenity space that includes a relaxing garden area and children's playground
- Within walking distance to the Fraser River shoreline, schools, parks, and shopping in the historic neighbourhood of Queensborough
- Easy access to Highway 91, Ferries, Vancouver Airport, and New Westminster's main thoroughfares

### Impressive Exteriors

- Craftsman architectural design with extensive detailing such as entrances with front porches, detailed columns, wood trims, and decorative louvers
- Well-designed elegant exteriors consist of brick veneer, Hardie™ shake and plank siding
- Serene outdoor living with lush landscaping, heritage-style fence, and entry gates
- Convenient decks with gas BBQ off the main level of living (most homes)
- Secure and spacious garages for two cars tandem or side-by-side with plenty of room for storage

### Lavish Interiors

- Spacious open floor plans feature 9-foot ceilings on main floor with oversized windows allowing natural sunlight to brighten your home
- Recessed pot-lights throughout the main level

- Energy-saving LED lighting throughout
- Elegantly designed interiors featuring designer-selected colour palettes to choose from
- Interiors are graced with stylish 5" baseboards, 4" door and window casings
- Beautiful doors and closets accented with matte black Taymor® hardware
- Luxurious laminate hardwood-style floors in the entry, kitchen, dining and living spaces, while plush carpeting adds comfort to the stairs and upper floor
- Sleek, modern tile in powder, main bath, ensuite and laundry room
- Retreat to your master suite complete with walk-in closets and deluxe well-appointed ensuite

### Grand Kitchens

- Oversized kitchens for plenty of cooking and entertaining space
- Designer selected quartz countertops and backsplash
- Soft-close flat-panel or shaker cabinets and drawers complimented with brushed black Richelieu hardware with under cabinet lighting
- Large pantry, full depth cabinets and deep pot drawers for ample kitchen storage
- Stylish pendant lighting suspended over large kitchen island
- Double-basin undermount Blanco Silgranit sink with sleek Danze single-lever faucet and handy pullout vegetable spray with flex line
- Premium stainless-steel KitchenAid® appliances featuring:
  - Counter depth French Door Refrigerator
  - Slide-in five burner gas range with convection oven

- Commercial grade undercabinet hood fan with superior capture efficiency
- Large capacity intuitive dishwasher
- Built-in Panasonic microwave with matching stainless-steel trim

### Beautiful Bathrooms

- Convenient main floor powder room with flat-panel or shaker cabinetry and undermount sink
- Luxurious main bath with large vanity, durable flat-panel cabinets, quartz countertops and undermount sink plus deep soaker tub/shower combo with designer accent tiles and surround
- Sleek chrome Riobel® faucets add a touch of sophistication
- Matte black bathroom Taymor® hardware
- Comfort height toilets by Gerber
- Master ensuite features a deluxe frameless glass shower with handset floor-to ceiling tile surround, plus large vanity with undermount sink

### Safe, Secure and Convenient

- Mandatory fire sprinklers, built-in smoke and carbon monoxide detectors for your safety
- Energy efficient Low-E double glazed windows with 2" faux wood blinds
- Out of sight electric baseboard heating with individually controlled thermostats for extra energy-savings
- 30-year manufacturer's limited warranty on roof shingles for maximum durability, low-maintenance and attractive exterior design
- Rainscreen protection system for weather durability
- Built-in closet shelving and organizers in all closets

- Front and rear garden hose bibs for all your outdoor needs
- Curbside garbage and recycling pickup

### A Full-Service Developer

- Built by Crescent Creek Homes, a reputable developer and builder with over 30 combined years of industry experience
- Crescent Creek Homes is a licensed residential builder with Home Protection office of British Columbia and is a proud member of the Greater Vancouver Home Builder's Association
- Fully supported by a full-time service team and the WBI Home Warranty that includes:
  - 2 Year Material and Labour Warranty
  - 5 Year Building Envelope Warranty
  - 10 Year Structural Defects Warranty

### Deluxe Options

- Personalize your home by choosing from two professionally designed colour palettes to reflect your individual taste and style
- Fitting laundry rooms with full size, front loading Whirlpool washer and dryer
- Home security system installation
- Complete vacuum installation and accessories
- Window bug screens















Marketing + Sales by **AXIS**

Dimensions, sizes, specifications, layouts and materials are approximate only and subject to change without notice. Renderings are conceptual only. Please see sales team for more details. E.&O.E.



604.553.8228  
LIVEatOXFORD.ca

728 Ewen Avenue  
New Westminster, BC