



MONUMENT

KITSILANO

DRAFT



UNIT 201+301+PH1

2 Bedroom + 2 Bath + Flex
Interior: 1170 Sq Ft / Exterior: 55 Sq Ft

DRAFT

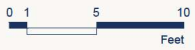


Dimensions, sizes, specifications, layouts and materials are approximate only and subject to change without notice. Purchasers are advised to review the Disclosure Statement and Offer of Purchase and Sale for more information E.&O.E.

UNIT 202

2 Bedroom + 2 Bath + Flex
Interior: 1140 Sq Ft / Exterior: 55 Sq Ft

DRAFT

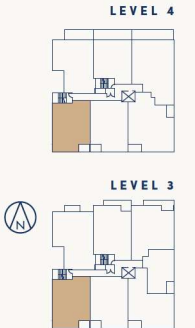
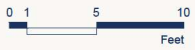


Dimensions, sizes, specifications, layouts and materials are approximate only and subject to change without notice. Purchasers are advised to review the Disclosure Statement and Offer of Purchase and Sale for more information E.&O.E.

UNIT 302+PH2

2 Bedroom + 2 Bath + Flex
Interior: 1155 Sq Ft / Exterior: 55 Sq Ft

DRAFT

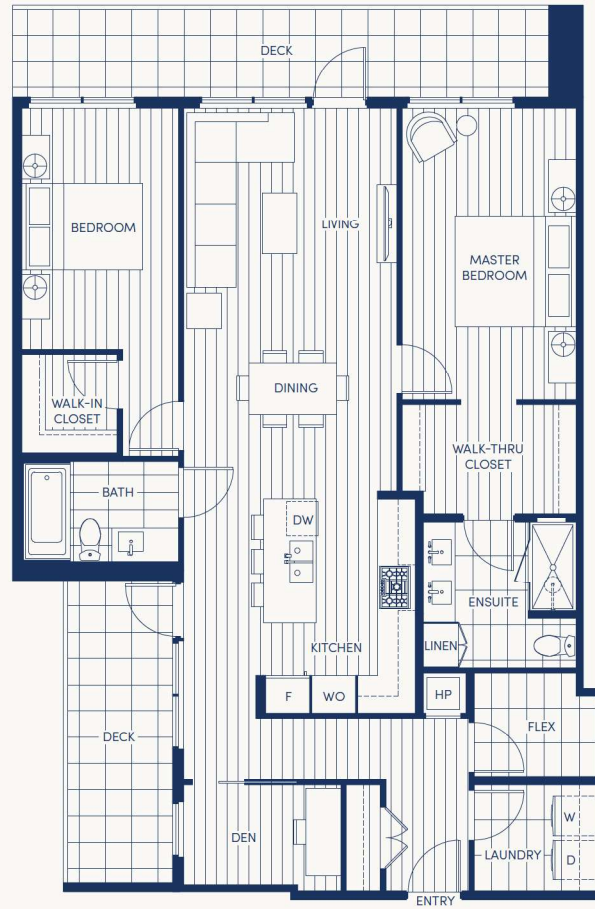


Dimensions, sizes, specifications, layouts and materials are approximate only and subject to change without notice. Purchasers are advised to review the Disclosure Statement and Offer of Purchase and Sale for more information E.&O.E.

UNIT 203

2 Bedroom + 2 Bath + Den + Flex
Interior: 1345 Sq Ft / Exterior: 285 Sq Ft

DRAFT

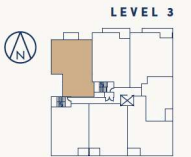
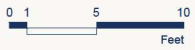
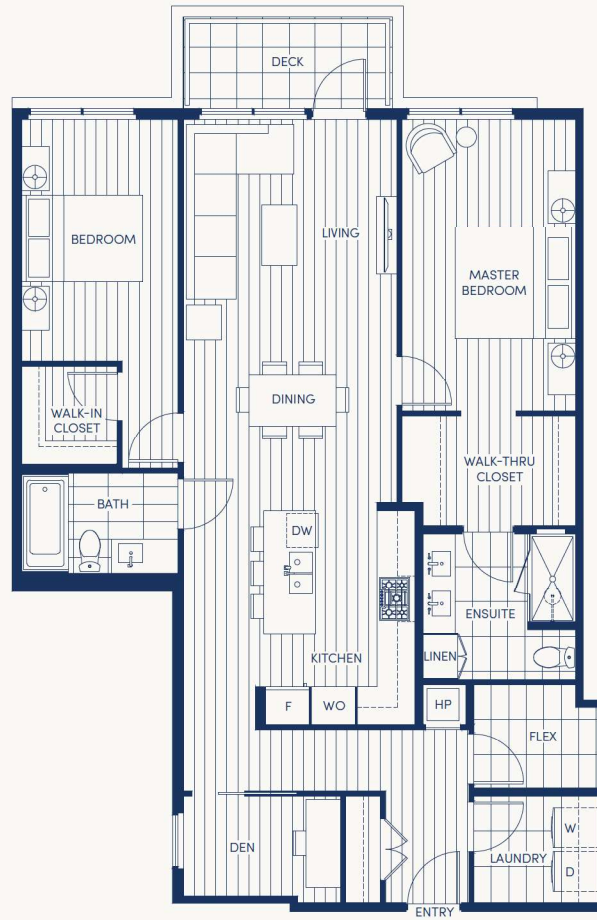


Dimensions, sizes, specifications, layouts and materials are approximate only and subject to change without notice. Purchasers are advised to review the Disclosure Statement and Offer of Purchase and Sale for more information E.&O.E.

UNIT 303

2 Bedroom + 2 Bath + Den + Flex
Interior: 1345 Sq Ft / Exterior: 70 Sq Ft

DRAFT

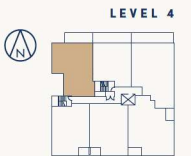
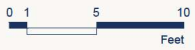


Dimensions, sizes, specifications, layouts and materials are approximate only and subject to change without notice. Purchasers are advised to review the Disclosure Statement and Offer of Purchase and Sale for more information E.&O.E.

UNIT PH3

2 Bedroom + 2 Bath + Den + Flex
Interior: 1240 Sq Ft / Exterior: 205 Sq Ft

DRAFT

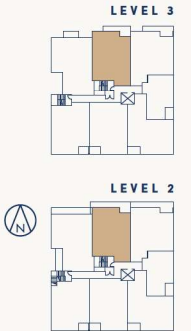
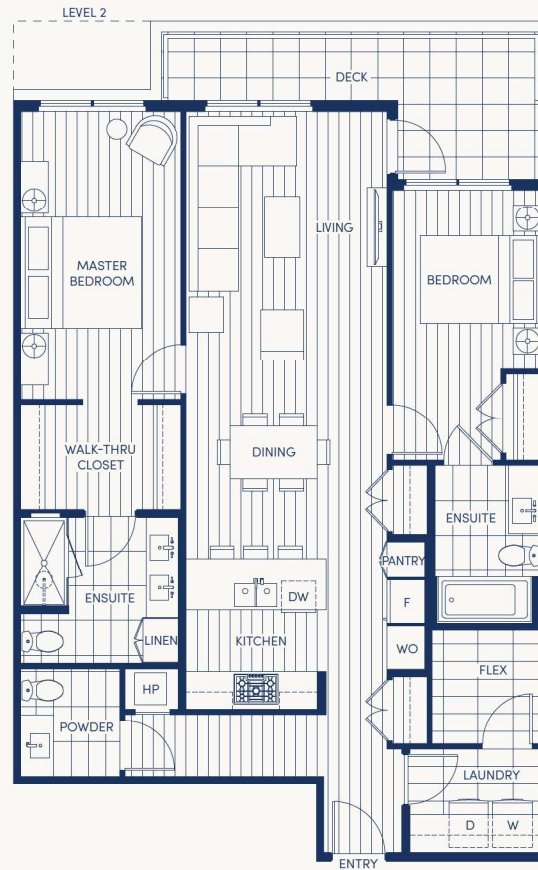


Dimensions, sizes, specifications, layouts and materials are approximate only and subject to change without notice. Purchasers are advised to review the Disclosure Statement and Offer of Purchase and Sale for more information E.&O.E.

UNIT 204+304

2 Bedroom + 2 Bath + Flex
Interior: 1200 Sq Ft / Exterior: 135 - 180 Sq Ft

DRAFT

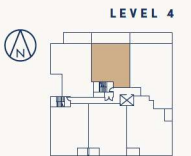


Dimensions, sizes, specifications, layouts and materials are approximate only and subject to change without notice. Purchasers are advised to review the Disclosure Statement and Offer of Purchase and Sale for more information E.&O.E.

UNIT PH4

2 Bedroom + 2 Bath + Flex
Interior: 980 Sq Ft / Exterior: 270 Sq Ft

DRAFT

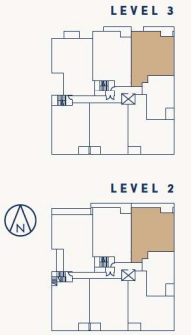
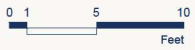


Dimensions, sizes, specifications, layouts and materials are approximate only and subject to change without notice. Purchasers are advised to review the Disclosure Statement and Offer of Purchase and Sale for more information E.&O.E.

UNIT 205+305

2 Bedroom + 2 Bath + Flex
Interior: 1235 Sq Ft / Exterior: 150 - 195 Sq Ft

DRAFT

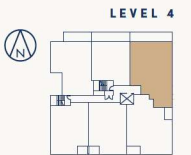


Dimensions, sizes, specifications, layouts and materials are approximate only and subject to change without notice. Purchasers are advised to review the Disclosure Statement and Offer of Purchase and Sale for more information E.&O.E.

UNIT PH5

3 Bedroom + 3 Bath + Flex
Interior: 1510 Sq Ft / Exterior: 305 Sq Ft

DRAFT

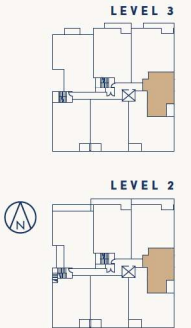
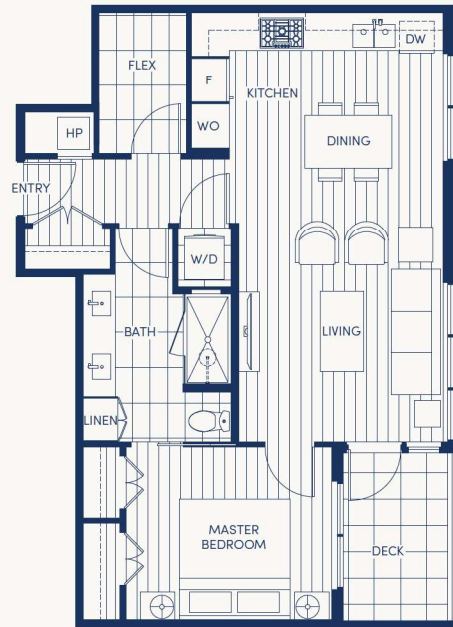


Dimensions, sizes, specifications, layouts and materials are approximate only and subject to change without notice. Purchasers are advised to review the Disclosure Statement and Offer of Purchase and Sale for more information E.&O.E.

UNIT 206+306

1 Bedroom + 1 Bath + Flex
Interior: 720 Sq Ft / Exterior: 60 Sq Ft

DRAFT



Dimensions, sizes, specifications, layouts and materials are approximate only and subject to change without notice. Purchasers are advised to review the Disclosure Statement and Offer of Purchase and Sale for more information E.&O.E.

UNIT PH6

3 Bedroom + 2 Bath + Flex
Interior: 1400 Sq Ft / Exterior: 125 Sq Ft

DRAFT

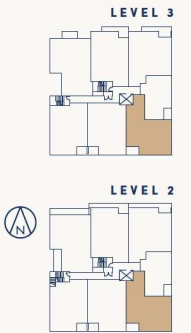
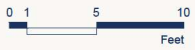


Dimensions, sizes, specifications, layouts and materials are approximate only and subject to change without notice. Purchasers are advised to review the Disclosure Statement and Offer of Purchase and Sale for more information E.&O.E.

UNIT 207+307

2 Bedroom + 2 Bath + Flex
Interior: 1195 Sq Ft / Exterior: 65 Sq Ft

DRAFT

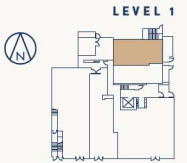
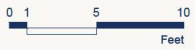
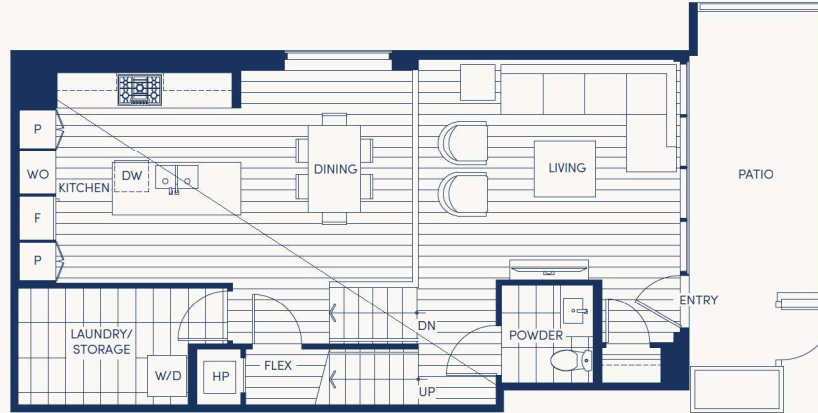
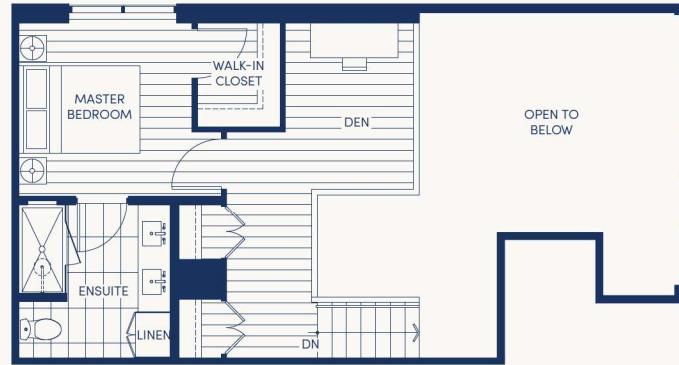


Dimensions, sizes, specifications, layouts and materials are approximate only and subject to change without notice. Purchasers are advised to review the Disclosure Statement and Offer of Purchase and Sale for more information E.&O.E.

GARDEN TOWNHOME 1

1 Bedroom + 1.5 Bath + Den + Flex
Interior: 1225 Sq Ft / Exterior: 160 Sq Ft

DRAFT

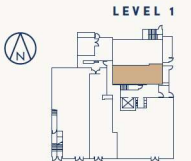
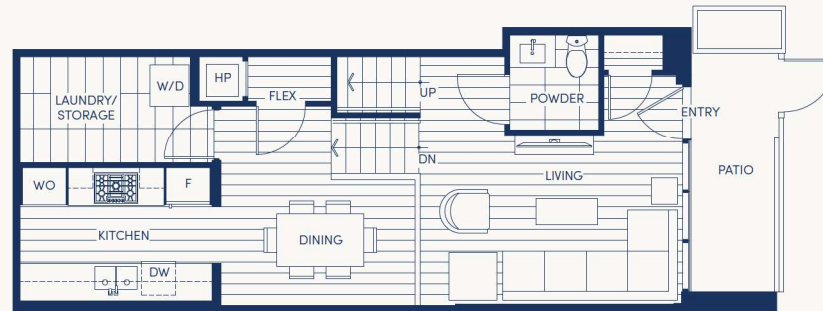


Dimensions, sizes, specifications, layouts and materials are approximate only and subject to change without notice. Purchasers are advised to review the Disclosure Statement and Offer of Purchase and Sale for more information E.&O.E.

GARDEN TOWNHOME 2

1 Bedroom + 1.5 Bath + Flex
Interior: 895 Sq Ft / Exterior: 85 Sq Ft

DRAFT



Dimensions, sizes, specifications, layouts and materials are approximate only and subject to change without notice. Purchasers are advised to review the Disclosure Statement and Offer of Purchase and Sale for more information E.&O.E.

DRAFT





DRAFT

DRAFT



DRAFT





DRAFT

MONUMENT

KITSILANO

INSPIRING FORM

- A contemporary architectural vision with Cross Laminated Timber (CLT) construction designed by Yamamoto Architecture
- Building materials and technology are implemented for design, function, and efficiency, and include metal panel cladding, natural stone inspired cladding, and painted cast-in-place concrete
- Landscaping thoughtfully curated and designed by ETA Landscape Architecture to complement the surrounding environment
- Green rooftop flourishes with trees, shrubs, and groundcovers

TAILORED INTERIORS

- Designed by award winning Insight Design Group
- Include ceiling heights 8'6"
- Engineered wood flooring; select from light and dark oak options
- Roller blinds for privacy
- Heating & cooling offering year-round climate control
- Large LG front-load washer and dryer with ColdWash™ Technology

SCULPTED KITCHENS

- Superior integrated appliance package:
 - 30" integrated Gaggenau refrigerator
 - 30" Gaggenau stainless steel 5-burner gas cooktop
 - 30" Gaggenau stainless steel electric wall oven and stacking speed oven
 - 30" Wolf stainless steel chimney hood fan
 - Gaggenau stainless steel Energy Star dishwasher
- UV lacquered, matte cabinetry in a re-imagined modern shaker style
- Polished quartz slab countertop flawlessly transitions to neolith backsplash
- Kitchen island with quartz slab with waterfall edge detail provides additional counter and storage space
- Franke under-mount double sink with sleek Hansgrohe Axor Citterio faucet
- Built-in recycling storage is efficient and discreet

SOPHISTICATED BATHROOMS

- Radiant in-floor heating for daily comfort
- Kohler Persuade® Curv dual-flush toilet
- Kohler Awaken® Series shower fixtures
- Main Bathroom:
 - Quartz countertops are topped with a floating wall mirror

- 12 x 24 porcelain tile flooring complements ceramic matte-white tile shower surround
- Alcove bath tub for a relaxing bathing experience
- Powder Room:
 - Modern glazed ceramic tile feature wall makes a statement
 - 12 x 24 porcelain tile flooring
 - Quartz countertop
- Master Ensuite:
 - UV lacquered, matte finish cabinetry complete with custom brushed nickel pulls
 - Floor to ceiling marble look tiles

APPEALING AMENITIES

- Secured underground parking, including the convenience of electric charging stalls
- Secure bicycle storage available for every home
- Socialize or unwind on a shared rooftop area with hobby/work space, garden, and outdoor BBQ

PEACE OF MIND

- Secure entry system to parkade and building
- Comprehensive 2-5-10 Home Warranty

FEATURES