

PLAN 2C

1 BEDROOM

Indoor Space

558 SF

Indoor/Outdoor Solarium

237 - 241 SF

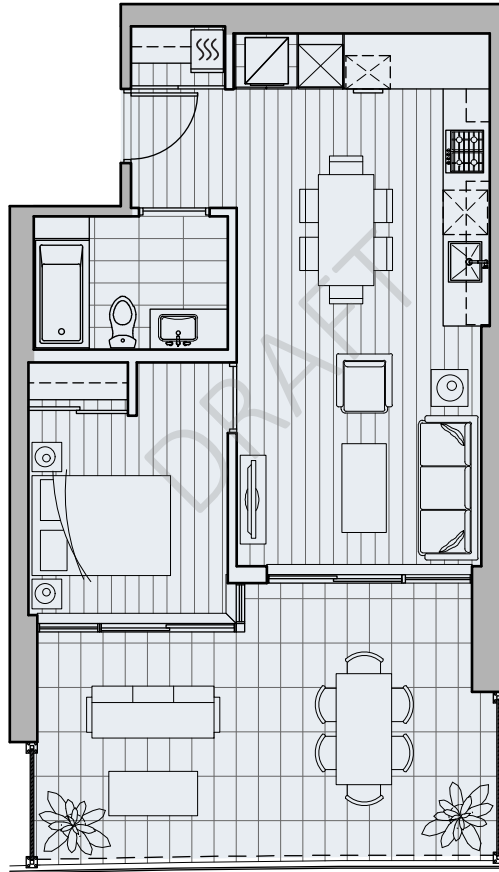
Total Living Space

795 - 799 SF

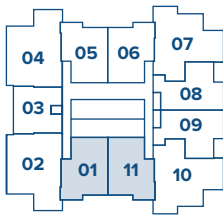
Actual suite plan may have minor variations from or be shown as a mirror image of the typical plan shown.

Balcony may vary on each level.

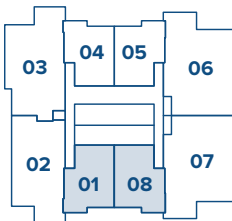
This unit plan is an adaptable unit. Please ask our sales executive for more info.



CENTRAL TOWER



LEVEL 4-36



LEVEL 37-44



STEAM CLOSET

CONCORD
Metrotown

PLAN 2F

2 BEDROOM

Indoor Space

818 SF

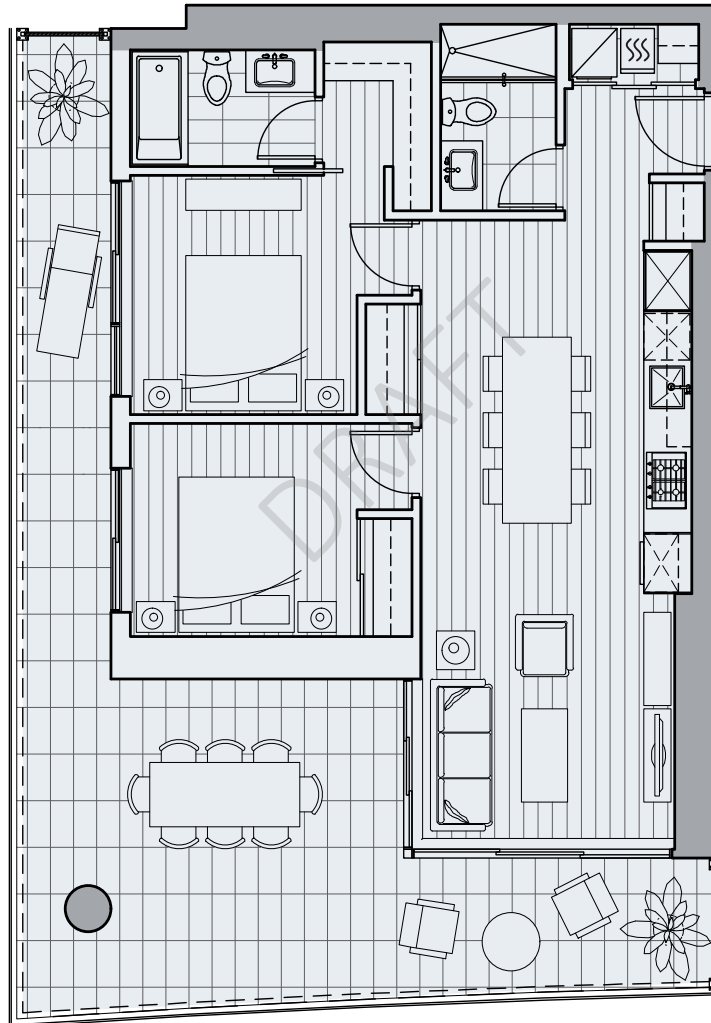
Indoor/Outdoor Solarium

339 - 523 SF

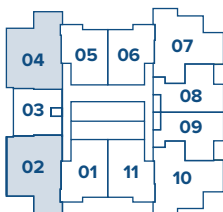
Total Living Space

1157 - 1341 SF

Actual suite plan may have minor variations from or be shown as a mirror image of the typical plan shown.
Balcony may vary on each level.



CENTRAL TOWER



LEVEL 5-36



CONCORD
Metrotown

CONCORDMETROTOWN.COM

20201006

The developer reserves the right to make modifications and changes to features and finishes, brands, materials, building and landscape design, specifications, ceiling heights, number of floors, number of units, flooring patterns and floor plans without notification. Approximate suite sizes are computed from the outside face of exterior walls, the outside face of corridor and common walls, and the centerline of walls adjacent to other strata lots. Approximate measurements for exterior balconies and terraces are computed from the outside face of exterior walls to the slab edges of the outside face of parapets. For suites where the balcony or terrace can be partially screened off with movable glass panels to form an indoor/outdoor solarium, the approximate measurements of the indoor/outdoor solarium are computed from the outside face of exterior wall to the dotted line. Indoor/outdoor solarium, balcony and terrace configuration and size may change substantially from this illustration and may vary floor to floor. Any flooring pattern shown on the plan does not indicate the actual wood or laminate, tile or paver, shape, size or direction installed. The same suite type may vary from floor to floor and/or be slightly altered. The suite may include one or more steps leading to or from any entry point to or from any terrace(s), or patio(s). Window and mullion configurations may vary by floor. Window systems may include panels, walls or other architectural features that may block views and reduce window glazing. Terrace areas may include planters. All matters will be governed entirely by the terms of the applicable disclosure statement and purchaser contract in each case. This is not an offering for sale. Any such offering may only be made with the applicable disclosure statement and agreement of purchase and sale. Concord Kingsway Project Limited Partnership E.& O.E.

PLAN 21

3 BEDROOM

Indoor Space

1168 SF

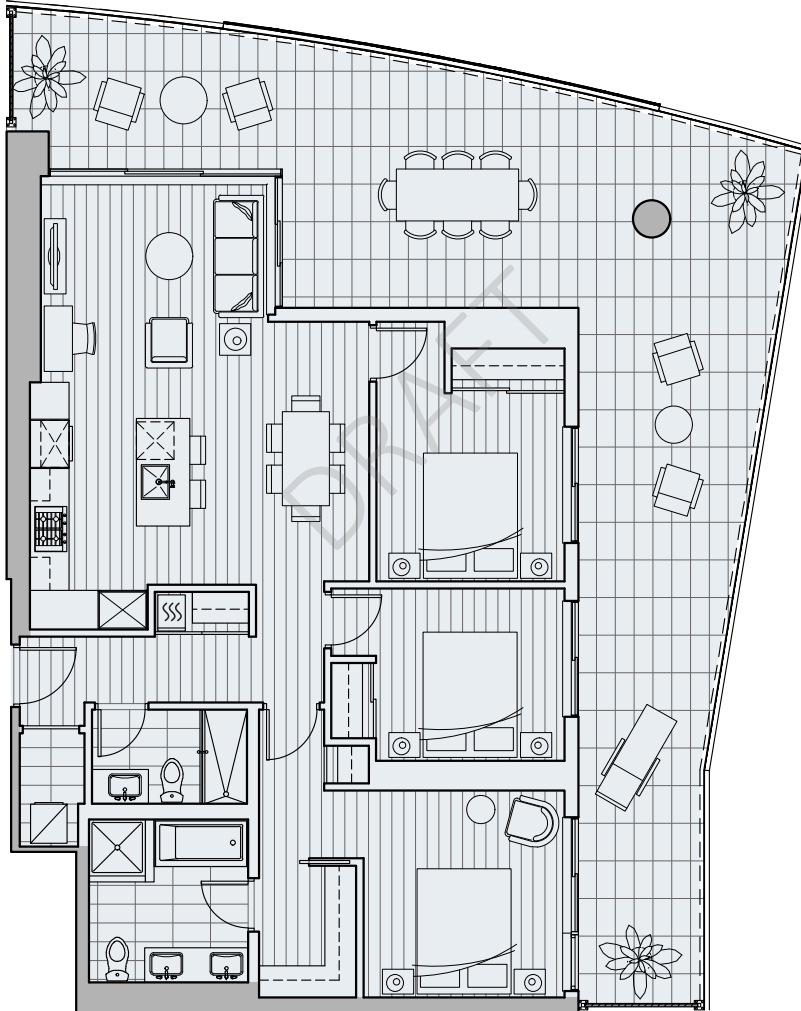
Indoor/Outdoor Solarium

723 - 798 SF

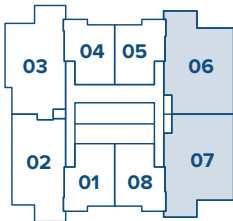
Total Living Space

1891 - 1966 SF

Actual suite plan may have minor variations from or be shown as a mirror image of the typical plan shown.
Balcony may vary on each level.



CENTRAL TOWER



LEVEL 37-44



STEAM CLOSET

CONCORD

Metrotown

CONCORDMETROTOWN.COM

20201006

The developer reserves the right to make modifications and changes to features and finishes, brands, materials, building and landscape design, specifications, ceiling heights, number of floors, number of units, flooring patterns and floor plans without notification. Approximate suite sizes are computed from the outside face of exterior walls, the outside face of corridor and common walls, and the centerline of walls adjacent to other strata lots. Approximate measurements for exterior balconies and terraces are computed from the outside face of exterior walls to the slab edges of the outside face of parapets. For suites where the balcony or terrace can be partially screened off with movable glass panels to form an indoor/outdoor solarium, the approximate measurements of the indoor/outdoor solarium are computed from the outside face of exterior wall to the dotted line. Indoor/outdoor solarium, balcony and terrace configuration and size may change substantially from this illustration and may vary floor to floor. Any flooring pattern shown on the plan does not indicate the actual wood or laminate, tile or paver, shape, size or direction installed. The same suite type may vary from floor to floor and/or be slightly altered. The suite may include one or more steps leading to or from any entry point to or from any terrace(s), or patio(s). Window and mullion configurations may vary by floor. Window systems may include panels, walls or other architectural features that may block views and reduce window glazing. Terrace areas may include planters. All matters will be governed entirely by the terms of the applicable disclosure statement and purchaser contract in each case. This is not an offering for sale. Any such offering may only be made with the applicable disclosure statement and agreement of purchase and sale. Concord Kingsway Project Limited Partnership E.& O.E.