

# Autograph

CLASSIC WESTSIDE. OFF CAMBIE.

ADVANCE FLOORPLAN PACKAGE



# EVERY GREAT STORY BEGINS

*At Home*



The next step in your life story begins at Autograph. This collection of 64 one, two and three-bedroom signature homes set in two timeless, four-storey buildings. In this fifth chapter of the esteemed Cambie Collection, Pennyfarthing Homes has married traditional architecture with the latest tech enabled design and amenities. This is the best of both worlds – classic westside charm, yet only minutes to the urban convenience of Cambie.



# WHERE THE WESTSIDE MEETS *Capitol*

HAWTHORNE

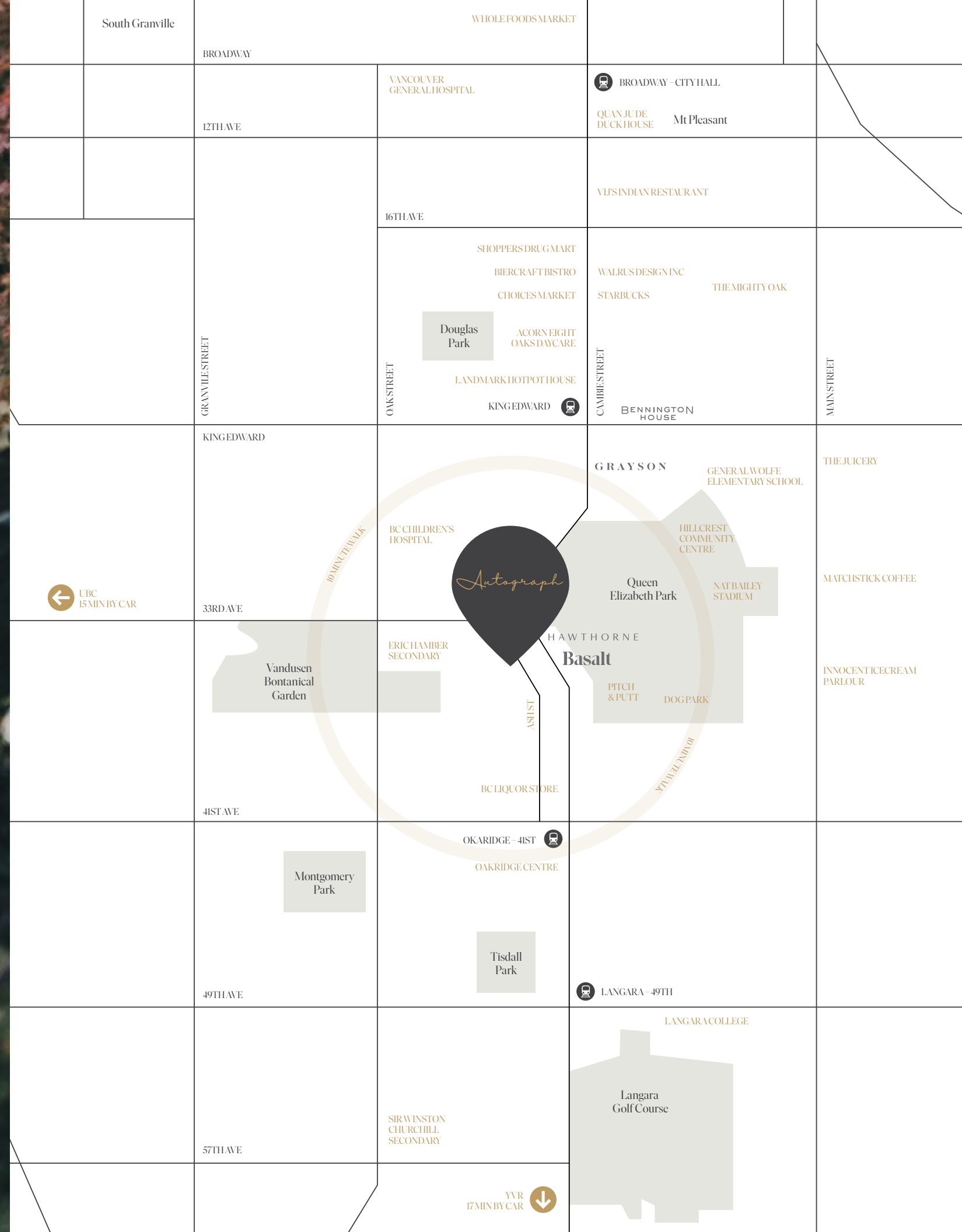
BENNINGTON HOUSE

THE GRAYSON

BASALT









# TIMELESS ARCHITECTURE MADE FOR *The Future*

Designed for the intimate scale of the tree-lined westside streets, Autograph's boutique buildings were intended to elegantly fit within the landscape of the neighbourhood.

The off-white brickwork exterior showcases styling recalling classical architecture with its poise and symmetry. Autograph celebrates centuries of craftsmanship with columns of black framed windows, defined by strong stone lintels and distinctive keystones. The twin four-storey buildings create a landscaped hideaway courtyard between them.





# FEATURES

## The Fifth Chapter in the Cambie Collection. Now Off Cambie.

The newest addition to the sought-after Cambie Collection presented by renowned Vancouver developer, Pennyfarthing Homes with over 40 years of experience

A signature collection of 64 modern one, two and three-bedroom homes shared between two classically designed, four-storey buildings

Bold architecture by award-winning Vancouver firm, Rositch Hemphill Architects, celebrating time-honoured craftsmanship with traditional exterior elements

Conveniently located just off Cambie, a short stroll away from the boutique shopping village with easy commutes to anywhere in the city including YVR, UBC and beyond

Situated on peaceful, tree-lined Ash Street in a distinguished residential area of Vancouver's Westside for a quiet, yet accessible way of life

Minutes from iconic Queen Elizabeth Park, a 130-acre public garden with a network of trails, and various outdoor recreation

Centralized courtyard with paving stones and children's play area serves as a warm, inviting outdoor living space for all residents to enjoy

Private patios, terraces and balconies include natural gas BBQ hookups to connect indoor and outdoor living space for every home with 24x24" pavers and hose bib on ground-level patios and top-level terraces

Built by Trillium Projects, a trusted name in construction and project management for more than 20 years

## Inspired Interiors

Perfectly appointed contemporary interiors designed by House of Bohn, an award-winning firm renowned for creating spaces that enhance daily life

Rare ceiling heights up to 9' 6" in living spaces and 7 ft solid core doors that create a spacious and penthouse style experience throughout\*

Choice of sophisticated dark scheme with walnut finishing or refined light colour schemes with white oak finishing

Optional carpeted bedrooms and engineered hardwood flooring throughout living spaces provide the perfect canvas for any style of décor.

Convenient, top-of-the-line front-loaded LG Washer/Dryer combo – complete with quartz countertops in select homes

Contemporary roller shades that allow you to regulate sunlight and preserve privacy with ease

## Gourmet Kitchens

Every home boasts an integrated stainless-steel gourmet appliance package that includes:

- Bosch 30" five-burner gas cooktop
- Bosch 30" pull-out hood fan with custom panel to match cabinetry
- Bosch 30" wall oven
- Bosch 30" speed oven combines classic oven with microwave technology
- Bosch 24" custom panel dishwasher
- Bosch 30" full-height custom panelled fridge and bottom freezer that seamlessly blend into finely crafted cabinetry

Marvel under-counter wine fridge in select homes ensures the perfect pairing is always preserved at the optimal temperature and ready to serve

White or grey Silgranit Super Single sink with a 9-1/2" stone composite & resin bowl with champagne bronze hardware throughout

Under-sink anti-bacterial pull-out waste bin drawers to organize recycling and trash

Optional 3" thick, value-adding square-edge quartz countertops with plenty of food-prep surface, in fresh or rugged concrete (standard in top level homes & 3 beds)

## Stunning Bathrooms

Clean, modern lines are accentuated by porcelain tile mosaics on shower floor, and 12" x 24" statement-size tiles on ensuite floor and walls

Ensuite bathrooms include stunning contemporary vanity design with champagne bronze hardware, open shelving and sleek, refined cabinetry, in a crisp white oak or warm dark walnut

Ensuites boast 3" thick quartz, square-edge countertops that make a statement

Soft downlit light fixture creates a warm and inviting environment for spa-like experience and Nuheat in-floor heating in ensuites for ultimate comfort

High efficiency toilet with elongated bowl and water-saving dual flush

## Intelligent Home Solutions

Seamlessly integrated 1Valet enterphone panel in each building adds security and ease to your everyday living with the following features:

- Resident app controlled from your smart phone to keep everything in one place
- Facial recognition entry
- Video calling to enterphone
- Contactless mobile phone entry
- Amenity booking platform
- Digital lockbox (for vendors/friends & family etc.)
- Access logs for entrances
- Customizable background
- SMS visitor entry, landline/cell phone visitor entry
- Parcel scanning entry access and delivery notification to residents via text message and/or app/email

Autograph's Optional Work From Home Package offers next-level, modern living convenience with timesaving, stress-reducing technology that will improve your quality of life and support a healthy live/work integration:

- Wall-mounted 10" iPad to manage all in-home tech and building access for guests & deliveries
- Leviton app to control lighting and energy-saving, and smart self-learning Nest thermostat
- Built-in tech desks that designate ergonomic creatives spaces for study and/or for work, available in 48" and 60" widths (select homes) match kitchen's colour scheme

Autograph Signature Library amenity room features fully equipped individual work pods with task lighting and high-speed connection as well as communal harvest table for hosting breakfast meetings, book clubs or celebrations.

## Everyday Convenience & Well-Being

Green building policy certified

Parking included in every home

Dedicated dog wash station with table and hot/cold hose line

Electric vehicle-ready stalls

Car wash station

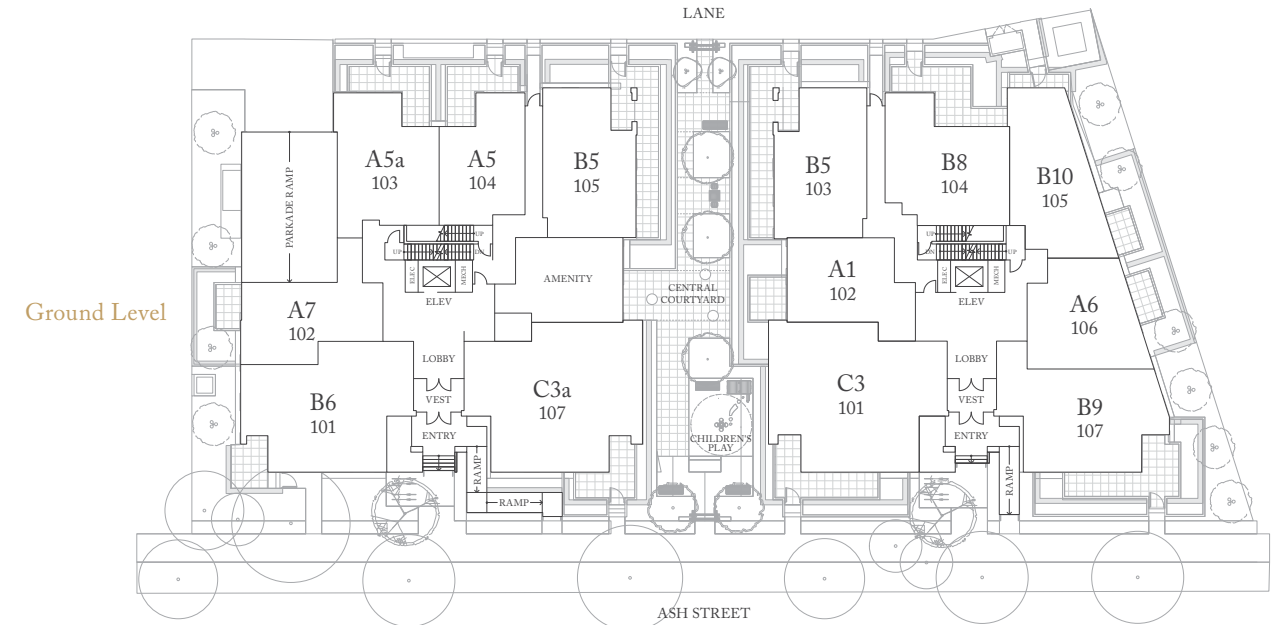
Secure parcel room with added ease from 1Valet controls

Comprehensive National 2-5-10 Home Warranty

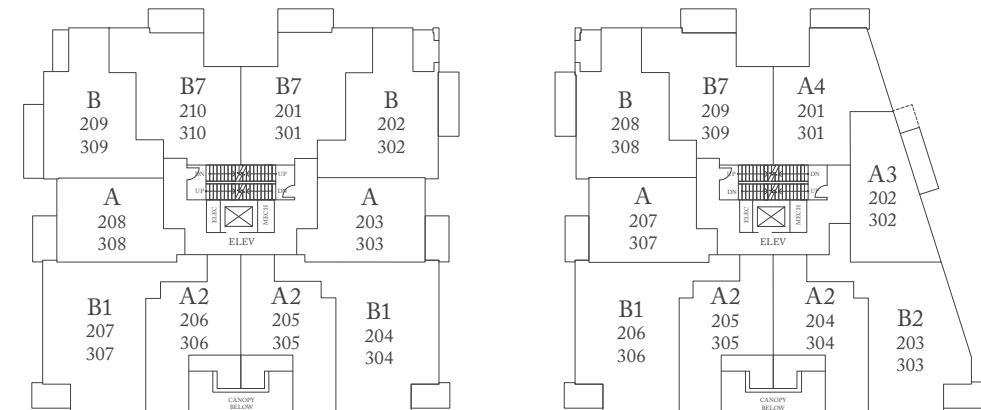
Air conditioning with VRF 2-pipe fan coil with heating and cooling function

# SITE MAP

Autograph



2nd and 3rd Levels



4th Level



Dimensions, sizes, specifications, layouts and materials are approximate only and subject to change without notice. Purchasers are advised to review the Disclosure Statement and Offer of Purchase and Sale for more information E.&O.E. \*Ceiling heights may vary based on drops required.

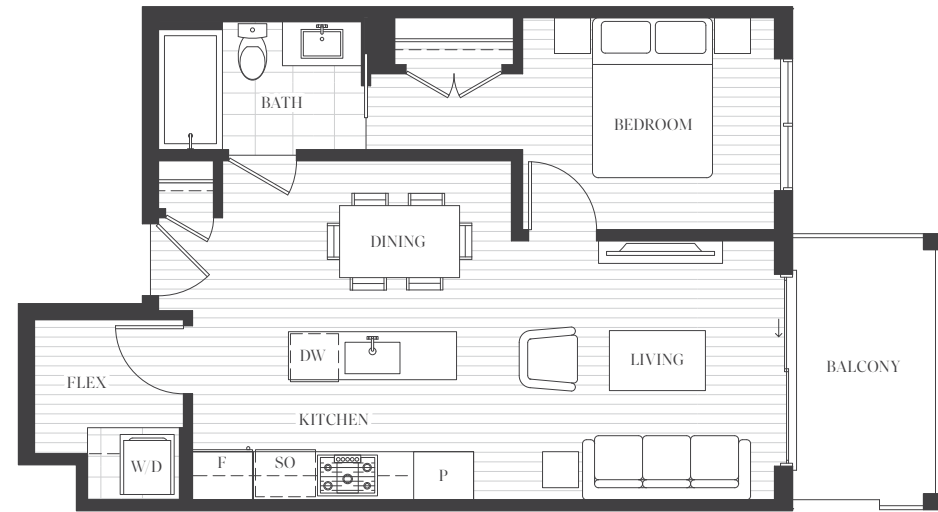


Dimensions, sizes, specifications, layouts and materials are approximate only and subject to change without notice. Purchasers are advised to review the Disclosure Statement and Offer of Purchase and Sale for more information E.&O.E.

# UNIT A

1 Bedroom + Flex  
2nd + 3rd Levels  
Interior: 602 – 604 sf  
Exterior: 68 sf

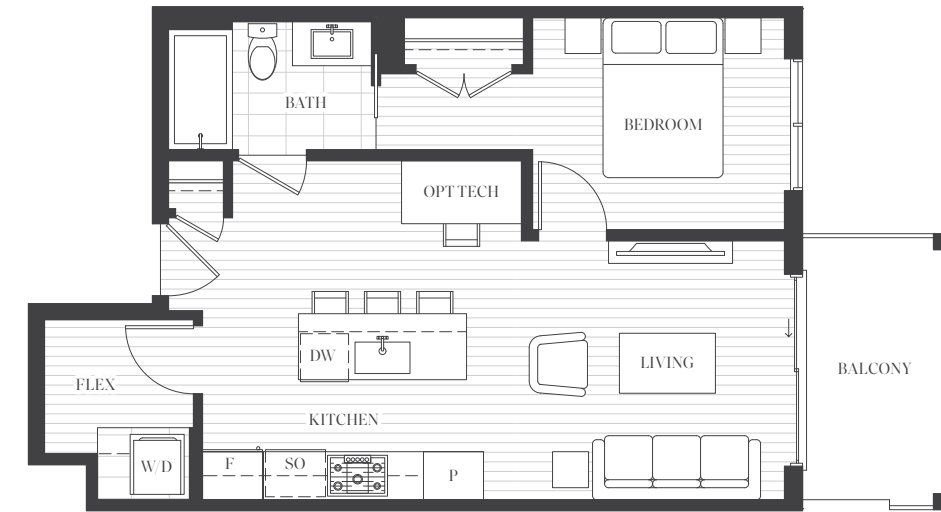
*Autograph*




# UNIT A-OPT 2

1 Bedroom + Flex  
2nd + 3rd Levels  
Interior: 602 – 604 sf  
Exterior: 68 sf

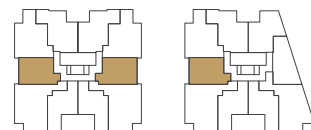
*Autograph*




[AutographLiving.ca](http://AutographLiving.ca)

 Dimensions, sizes, specifications, layouts and materials are approximate only and subject to change without notice. Purchasers are advised to review the Disclosure Statement and Offer of Purchase and Sale for more information E.&O.E.

SOUTH L2-3    NORTH L2-3



[AutographLiving.ca](http://AutographLiving.ca)

 Dimensions, sizes, specifications, layouts and materials are approximate only and subject to change without notice. Purchasers are advised to review the Disclosure Statement and Offer of Purchase and Sale for more information E.&O.E.

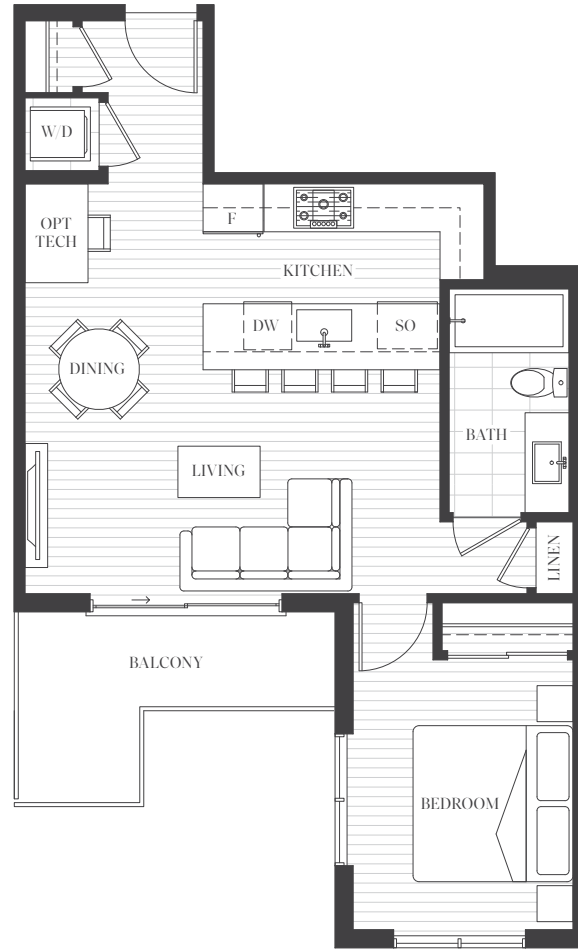
SOUTH L2-3    NORTH L2-3



# UNIT A2

1 Bedroom  
2nd + 3rd Levels  
Interior: 620 sf  
Exterior: 73 sf

# Autograph



SOUTH L2-3    NORTH L2-3



AutographLiving.ca

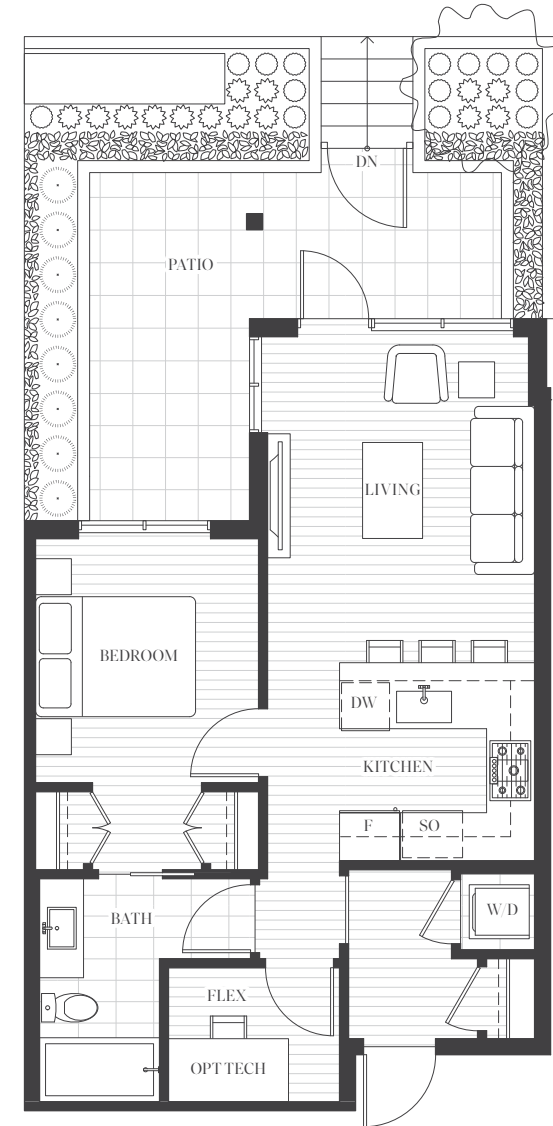


Dimensions, sizes, specifications, layouts and materials are approximate only and subject to change without notice. Purchasers are advised to review the Disclosure Statement and Offer of Purchase and Sale for more information E.&O.E.

# UNIT A5

1 Bedroom + Flex  
Ground Level  
Interior: 611 sf  
Exterior: 162 sf

# Autograph



SOUTH L1    NORTH L1



AutographLiving.ca



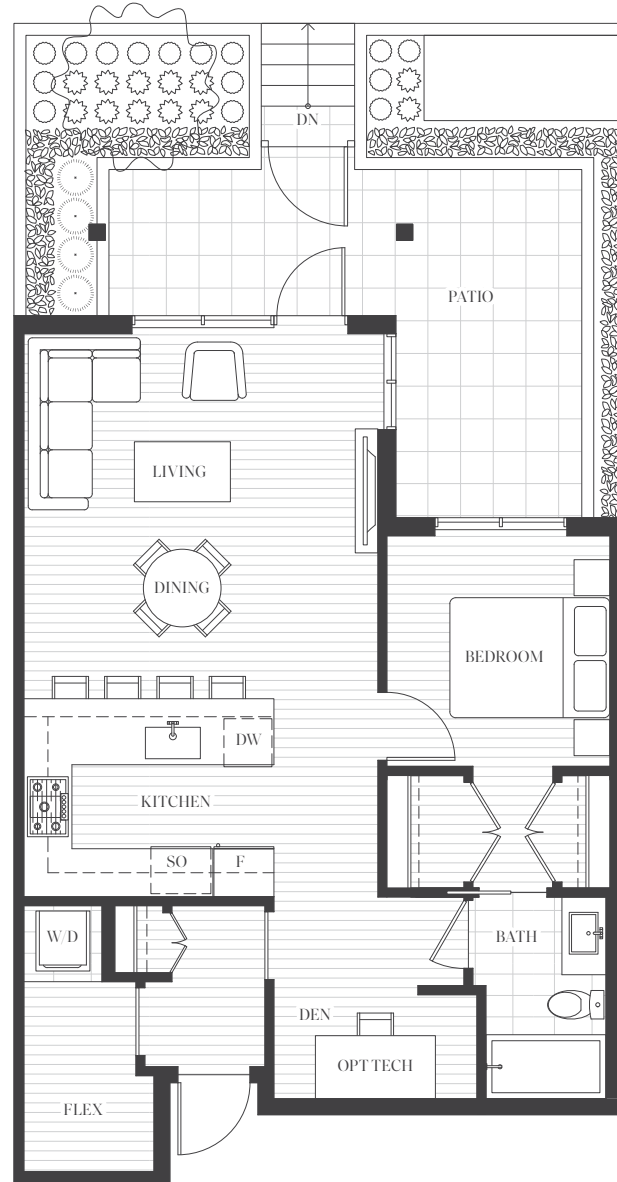
Dimensions, sizes, specifications, layouts and materials are approximate only and subject to change without notice. Purchasers are advised to review the Disclosure Statement and Offer of Purchase and Sale for more information E.&O.E.



# UNIT A5a

1 Bedroom + Den + Flex  
Ground Level  
Interior: 769 sf  
Exterior: 180 sf

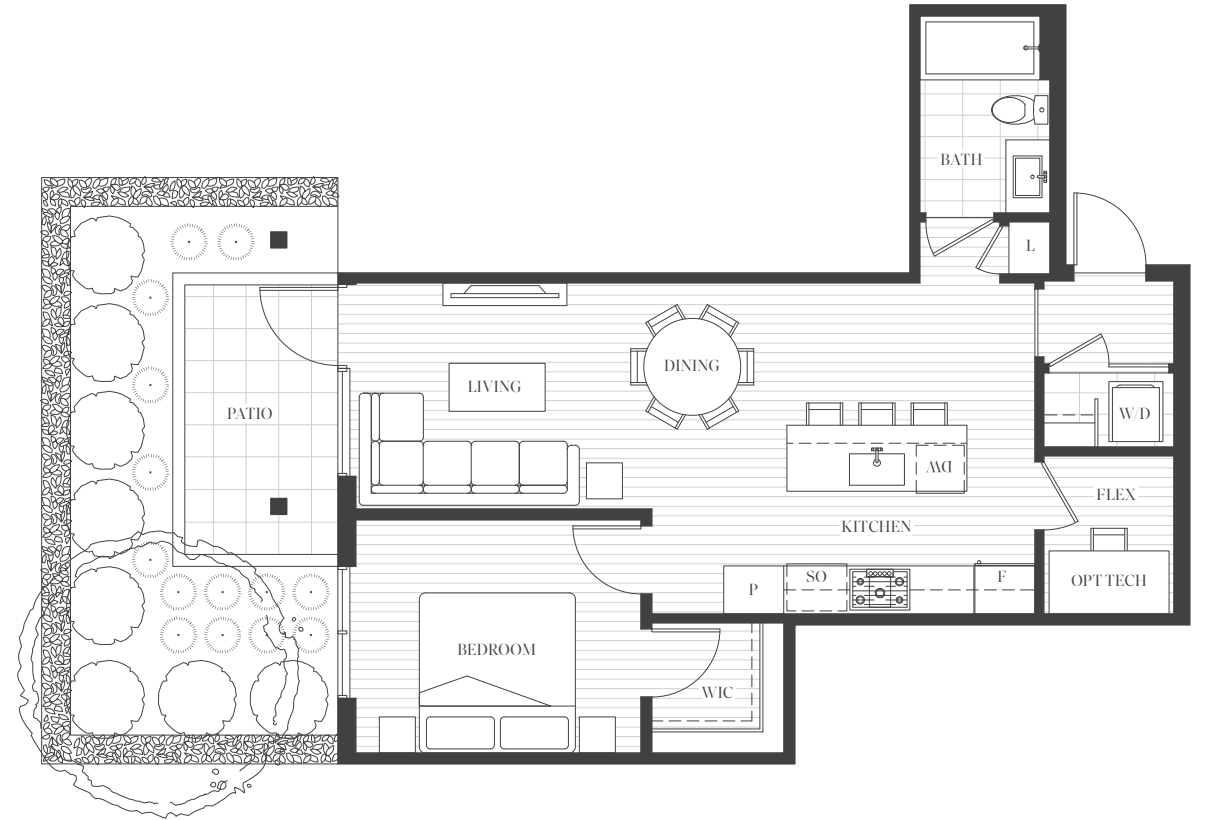
# Autograph




# UNIT A7

1 Bedroom + Flex  
Ground Level  
Interior: 695 sf  
Exterior: 67 sf

# Autograph




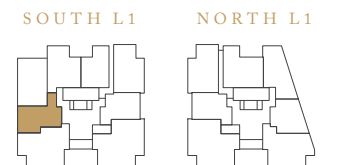
[AutographLiving.ca](http://AutographLiving.ca)

 Dimensions, sizes, specifications, layouts and materials are approximate only and subject to change without notice. Purchasers are advised to review the Disclosure Statement and Offer of Purchase and Sale for more information E.&O.E.



[AutographLiving.ca](http://AutographLiving.ca)

 Dimensions, sizes, specifications, layouts and materials are approximate only and subject to change without notice. Purchasers are advised to review the Disclosure Statement and Offer of Purchase and Sale for more information E.&O.E.

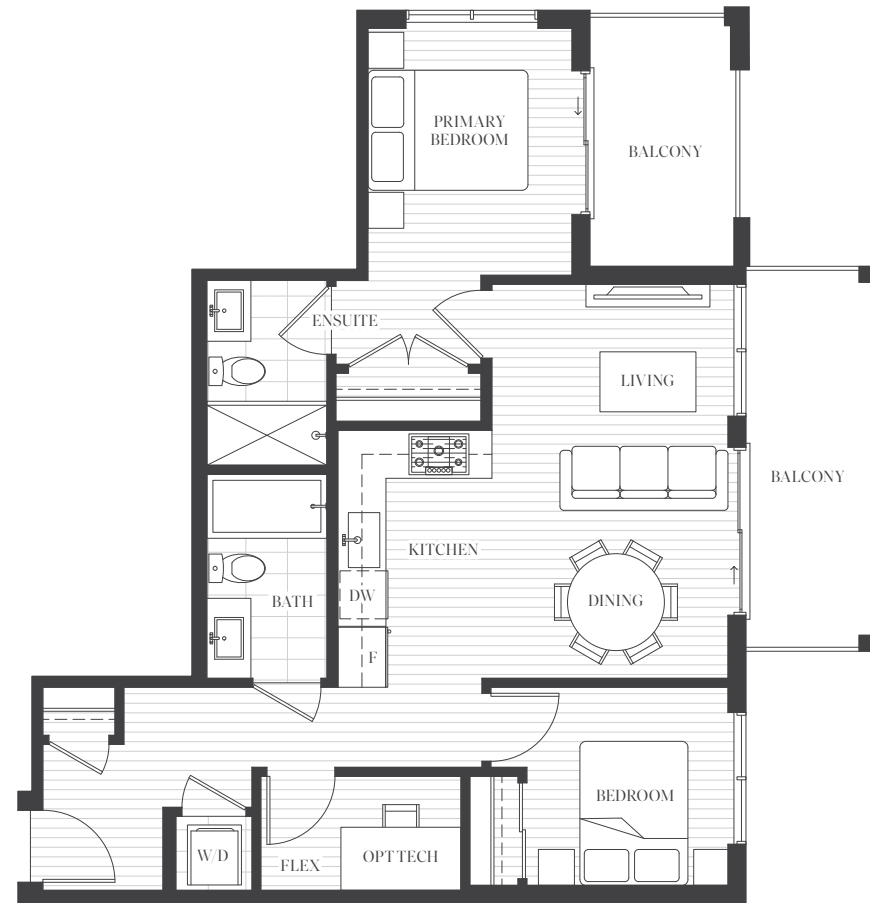




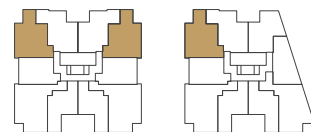
# UNIT B

2 Bedroom + Flex  
2nd + 3rd Levels  
Interior: 776 – 777 sf  
Exterior: 134 – 137 sf


*Autograph*



SOUTH L2-3    NORTH L2-3



[AutographLiving.ca](http://AutographLiving.ca)

 Dimensions, sizes, specifications, layouts and materials are approximate only and subject to change without notice. Purchasers are advised to review the Disclosure Statement and Offer of Purchase and Sale for more information E.&O.E.

# UNIT Ba

2 Bedroom + Den + Flex  
4th Level  
Interior: 841 – 843 sf  
Exterior: 141 – 193 sf


*Autograph*



SOUTH L4    NORTH L4



[AutographLiving.ca](http://AutographLiving.ca)

 Dimensions, sizes, specifications, layouts and materials are approximate only and subject to change without notice. Purchasers are advised to review the Disclosure Statement and Offer of Purchase and Sale for more information E.&O.E.



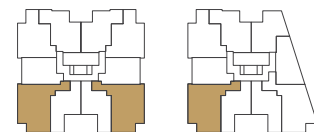
# UNIT B1

2 Bedroom  
 2nd + 3rd Levels  
 Interior: 996 sf  
 Exterior: 59 sf


*Autograph*



SOUTH L2-3    NORTH L2-3



[AutographLiving.ca](http://AutographLiving.ca)

 Dimensions, sizes, specifications, layouts and materials are approximate only and subject to change without notice. Purchasers are advised to review the Disclosure Statement and Offer of Purchase and Sale for more information E.&O.E.

# UNIT B3

2 Bedroom + Den + Flex  
 4th Level  
 Interior: 976 sf  
 Exterior: 246 sf


*Autograph*



SOUTH L4    NORTH L4



[AutographLiving.ca](http://AutographLiving.ca)

 Dimensions, sizes, specifications, layouts and materials are approximate only and subject to change without notice. Purchasers are advised to review the Disclosure Statement and Offer of Purchase and Sale for more information E.&O.E.



# UNIT B4

2 Bedroom + Flex  
4th Level  
Interior: 741 sf  
Exterior: 177 sf


# Autograph



SOUTH L4    NORTH L4



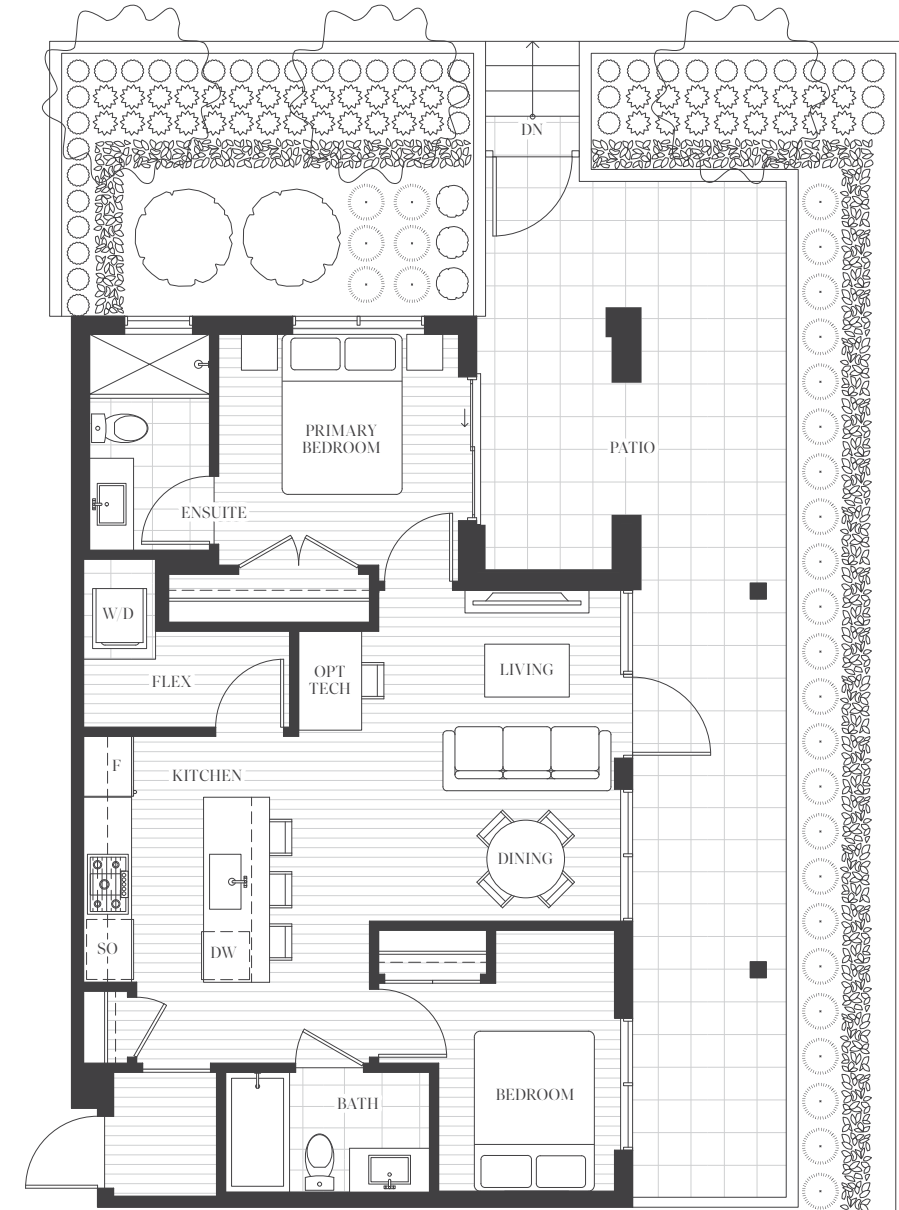
AutographLiving.ca

 Dimensions, sizes, specifications, layouts and materials are approximate only and subject to change without notice. Purchasers are advised to review the Disclosure Statement and Offer of Purchase and Sale for more information E.&O.E.

# UNIT B5

2 Bedroom + Flex  
Ground Level  
Interior: 786 sf  
Exterior: 330 sf


# Autograph



SOUTH L1    NORTH L1



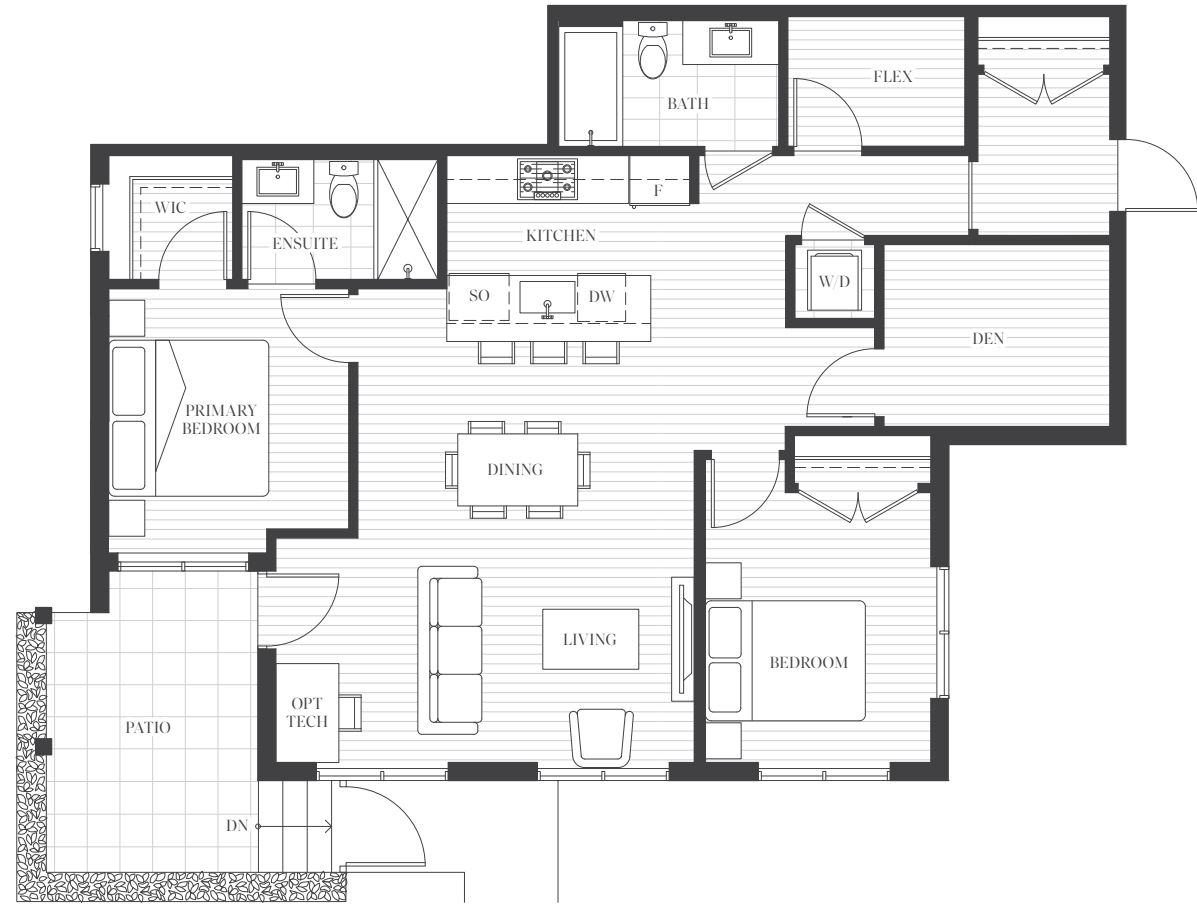
AutographLiving.ca

 Dimensions, sizes, specifications, layouts and materials are approximate only and subject to change without notice. Purchasers are advised to review the Disclosure Statement and Offer of Purchase and Sale for more information E.&O.E.

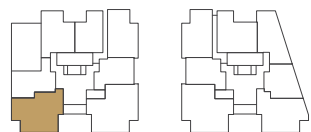
# UNIT B6

2 Bedroom + Flex + Den  
Ground Level  
Interior: 1113 sf  
Exterior: 110 sf


# Autograph



SOUTH L1    NORTH L1



[AutographLiving.ca](http://AutographLiving.ca)

 Dimensions, sizes, specifications, layouts and materials are approximate only and subject to change without notice. Purchasers are advised to review the Disclosure Statement and Offer of Purchase and Sale for more information E.&O.E.

# UNIT B7

2 Bedroom + Flex  
2nd + 3rd Levels  
Interior: 805 sf  
Exterior: 83 sf


# Autograph



SOUTH L2-3    NORTH L2-3



[AutographLiving.ca](http://AutographLiving.ca)

 Dimensions, sizes, specifications, layouts and materials are approximate only and subject to change without notice. Purchasers are advised to review the Disclosure Statement and Offer of Purchase and Sale for more information E.&O.E.



# UNIT B11

2 Bedroom + Flex  
4th Level  
Interior: 953 – 954 sf  
Exterior: 188 sf


*Autograph*



SOUTH L4 NORTH L4



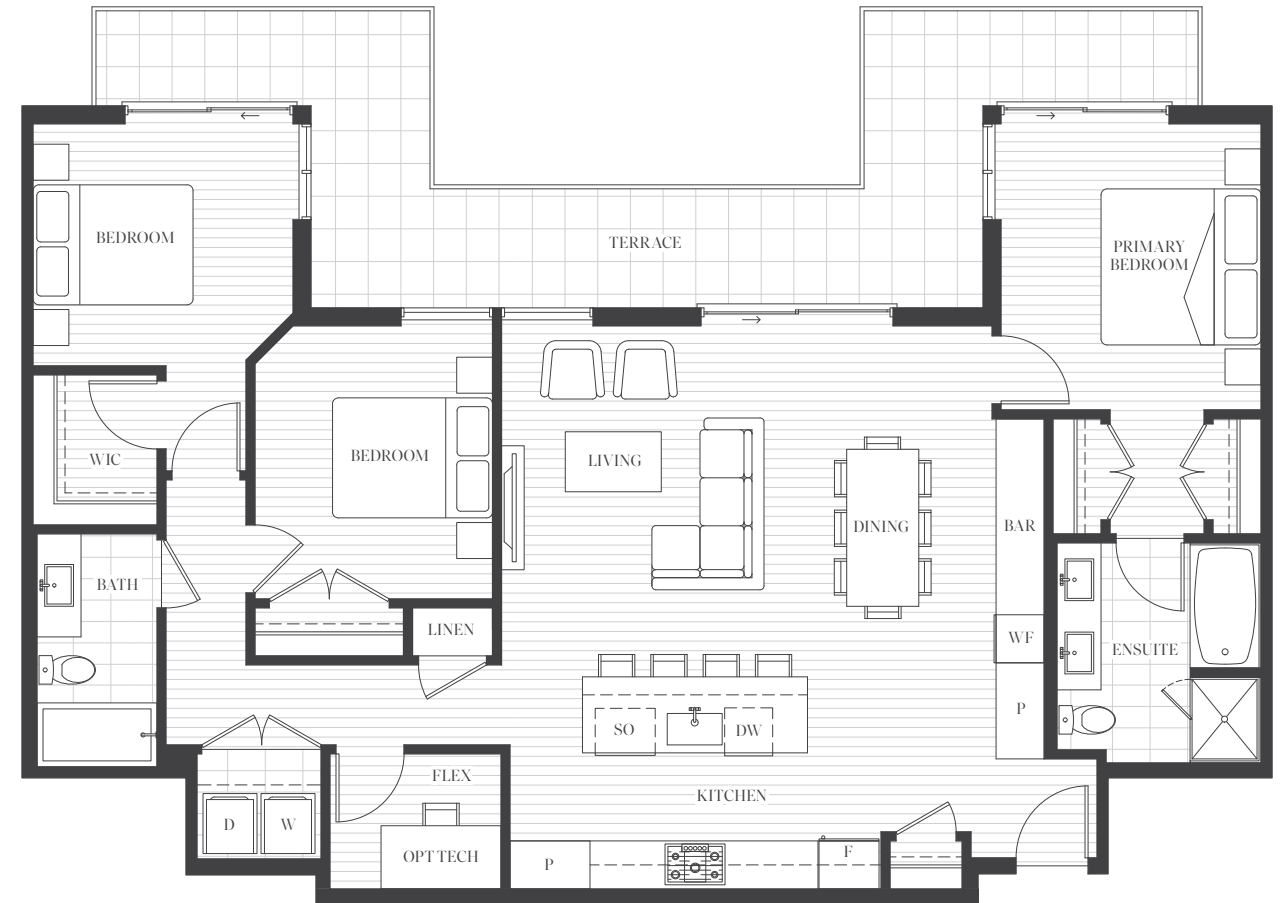
[AutographLiving.ca](http://AutographLiving.ca)

 Dimensions, sizes, specifications, layouts and materials are approximate only and subject to change without notice. Purchasers are advised to review the Disclosure Statement and Offer of Purchase and Sale for more information E.&O.E.

# UNIT C1

3 Bedroom + Flex  
4th Level  
Interior: 1400 sf  
Exterior: 285 sf


*Autograph*



SOUTH L4 NORTH L4



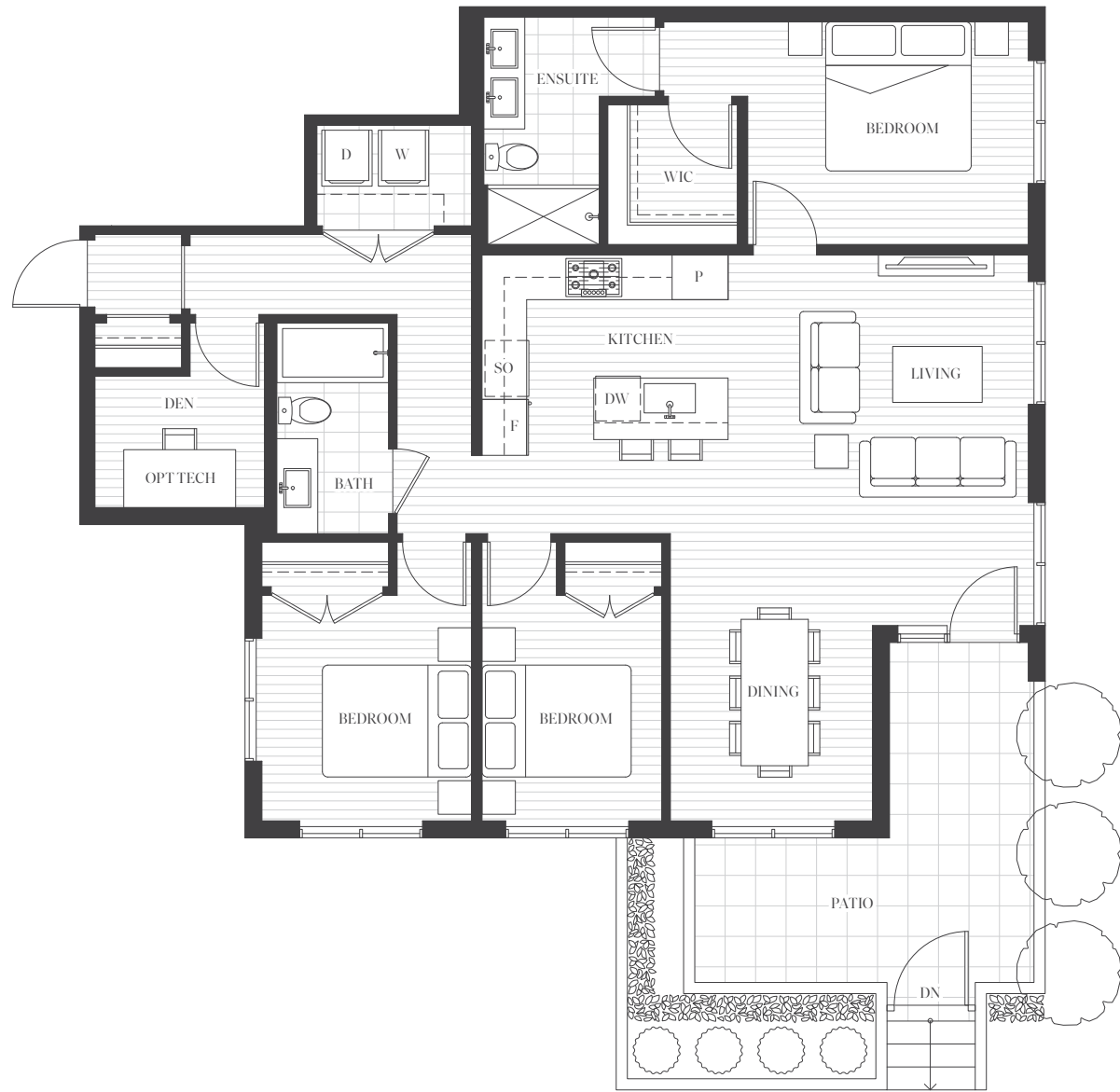
[AutographLiving.ca](http://AutographLiving.ca)

 Dimensions, sizes, specifications, layouts and materials are approximate only and subject to change without notice. Purchasers are advised to review the Disclosure Statement and Offer of Purchase and Sale for more information E.&O.E.

# UNIT C3a

3 Bedroom + Den  
 Ground Level  
 Interior: 1297 sf  
 Exterior: 150 sf


*Autograph*



SOUTH L1    NORTH L1



[AutographLiving.ca](http://AutographLiving.ca)

 Dimensions, sizes, specifications, layouts and materials are approximate only and subject to change without notice. Purchasers are advised to review the Disclosure Statement and Offer of Purchase and Sale for more information E.&O.E.

# UNIT C4

3 Bedroom + Flex  
 4th Level  
 Interior: 1356 sf  
 Exterior: 356 sf


*Autograph*



SOUTH L4    NORTH L4



[AutographLiving.ca](http://AutographLiving.ca)

 Dimensions, sizes, specifications, layouts and materials are approximate only and subject to change without notice. Purchasers are advised to review the Disclosure Statement and Offer of Purchase and Sale for more information E.&O.E.



# THE FIFTH CHAPTER IN PENNYFARTHING'S COMMITMENT TO A DISTINCT *Neighbourhood*

For over 40 years, Pennyfarthing Homes has constantly looked for special places to truly make their mark. The Cambie corridor is such a place. They have introduced four previous developments along the historic Cambie boulevard and now proudly introduce the fifth project, Autograph – the best of both location and design in the Cambie collection of homes.



# TRIED AND TRUSTED *Partners*

## YOUR BUILDER

*Trillium Projects*

Trillium's passion for residential development and construction translates into a dedication to providing the highest quality homes. With a foundation built on expertise, integrity, and results, Trillium prides itself on continually surpassing client expectations.

## YOUR ARCHITECT

*RHA*

Led by Bryce Rositch AIBC, AAA, FRAIC, RH Architects has helped to shape the built fabric of Vancouver and the Lower Mainland since its founding in 1991. Their broad experience covers master-planned communities, commercial, residential and institutional projects. One of the core objectives for RHA is to create healthy environments through thoughtful architecture.

## YOUR LANDSCAPE ARCHITECT

*Durante Kreuk*

Durante Kreuk pushes at the boundaries of convention to transform our perception of the public and private realms. This exploratory process creates people-centric, sustainable urban places that become cherished memory points and a focus for fostering community.

## YOUR INTERIOR DESIGNER

*House of Bohn*

House of Bohn is led by Karin Bohn, who founded the firm in 2009. Her talented team collaborates to find the unique soul of every project, evoking that spirit in space planning, material selection, furniture and décor. Every Bohn project comes with generous helpings of creativity, craft — and fun!

CLASSIC WESTSIDE. OFF CAMBIE.

Sales Gallery  
3373 Cambie Street  
Vancouver, BC V5Z 2W6

604.558.1907  
info@AutographLiving.ca  
AutographLiving.ca

Pennyfarthing  **MLA**  
CANADA