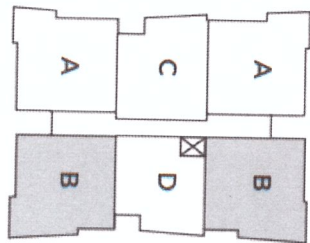


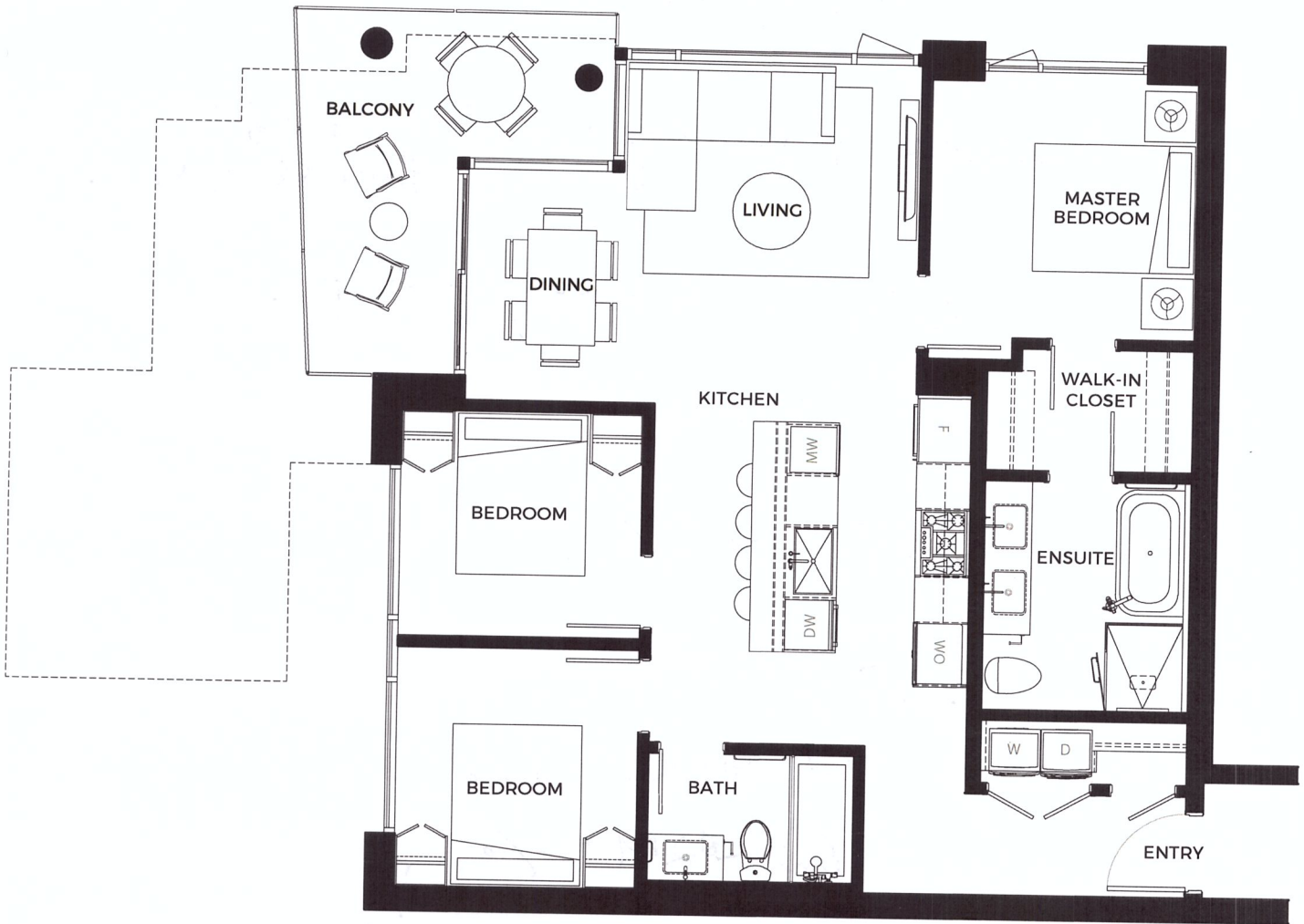
LEVEL 1



LEVEL 2-4

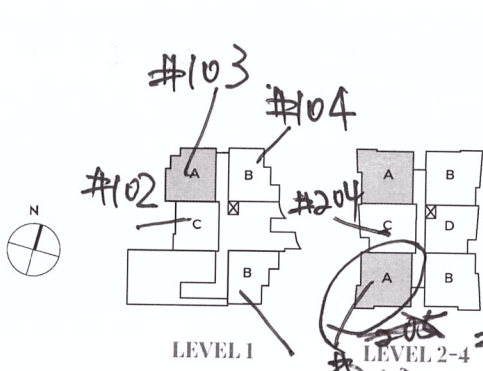
3 BEDROOM
 INTERIOR 1,020 SF

EXTERIOR 123 - 357 SF
 TOTAL 1,143 - 1,377 SF



#103
 \$1,732M.

\$1,711



~~#101~~ ~~#103~~
 4th Fl.

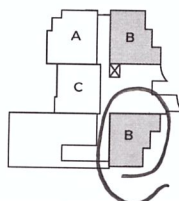
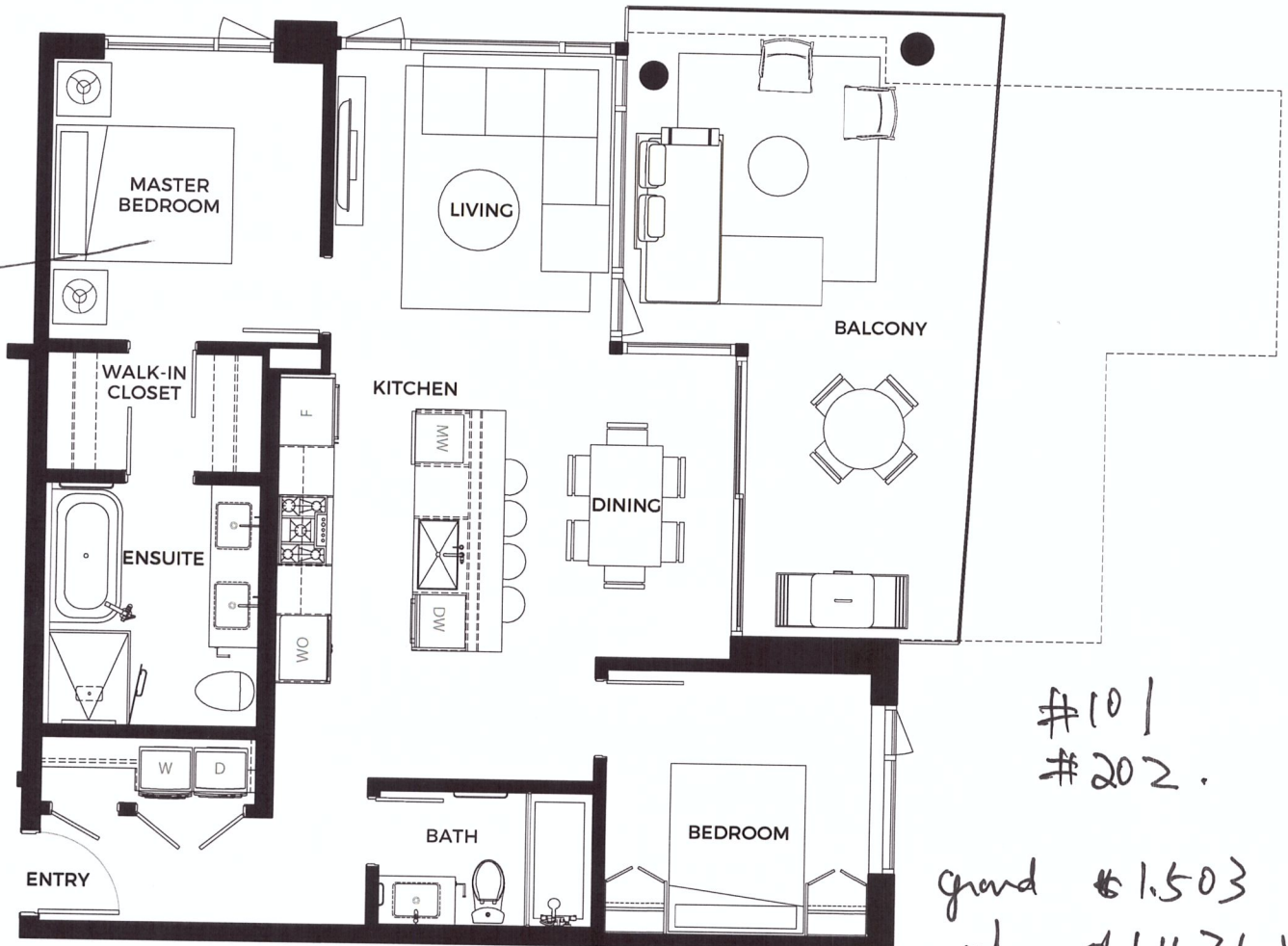
#403 10ft. height \$1,748M.

3rd Fl
 #303 9ft height \$1,685M.

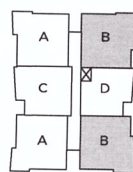
2nd Fl
 #203 9ft. \$1,654M.

~~2~~ BEDROOM

INTERIOR 915 SF
 EXTERIOR 264 - 417 SF
 TOTAL 1,179 - 1,332 SF



LEVEL 1

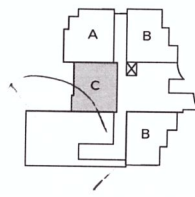
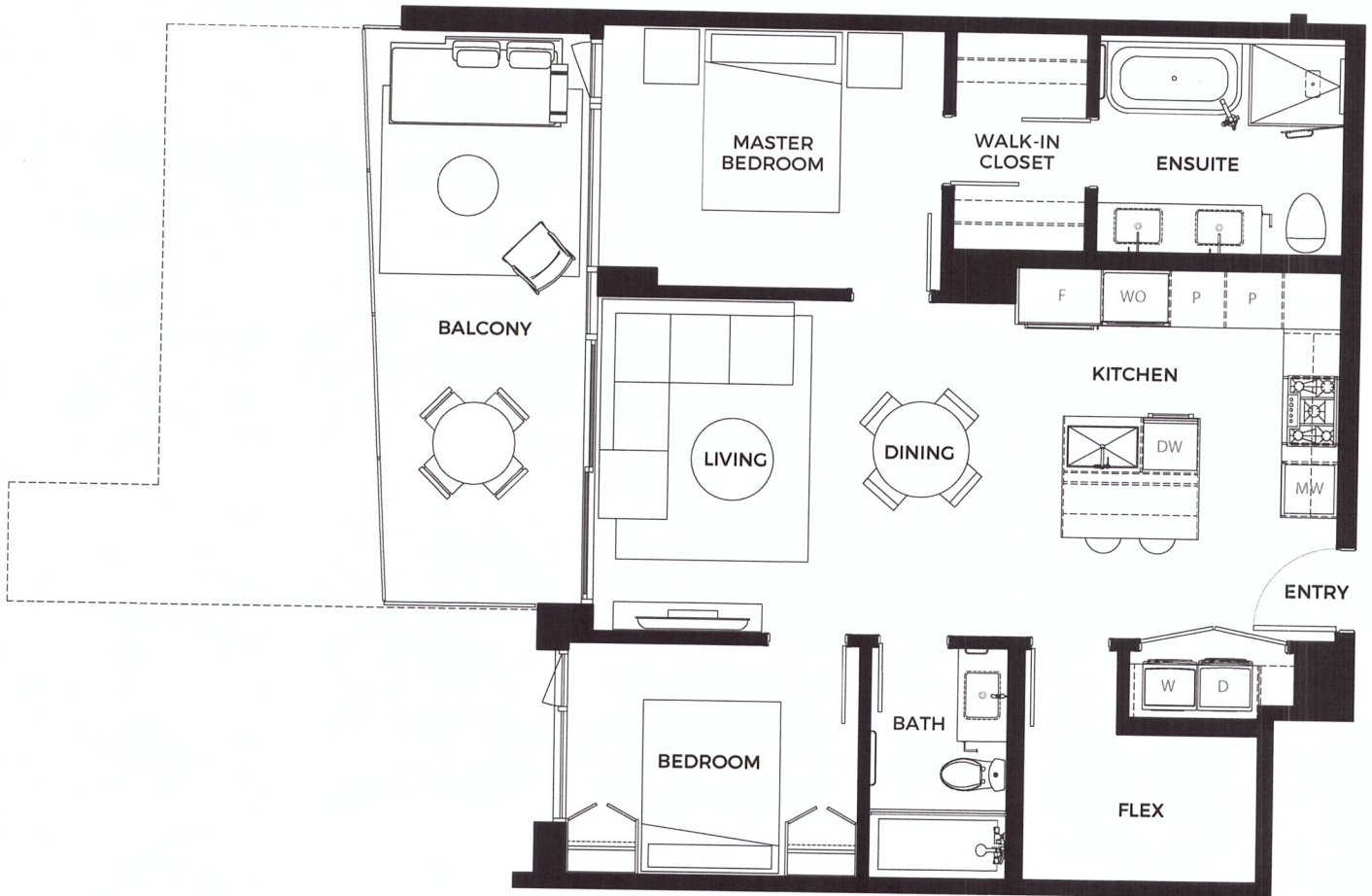


LEVEL 2-4

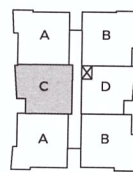


2 BEDROOM + FLEX

INTERIOR	888 - 890 SF
EXTERIOR	170 - 368 SF
TOTAL	1,058 - 1,258 SF



LEVEL 1



LEVEL 2-4



102.

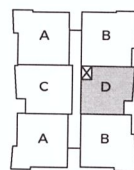
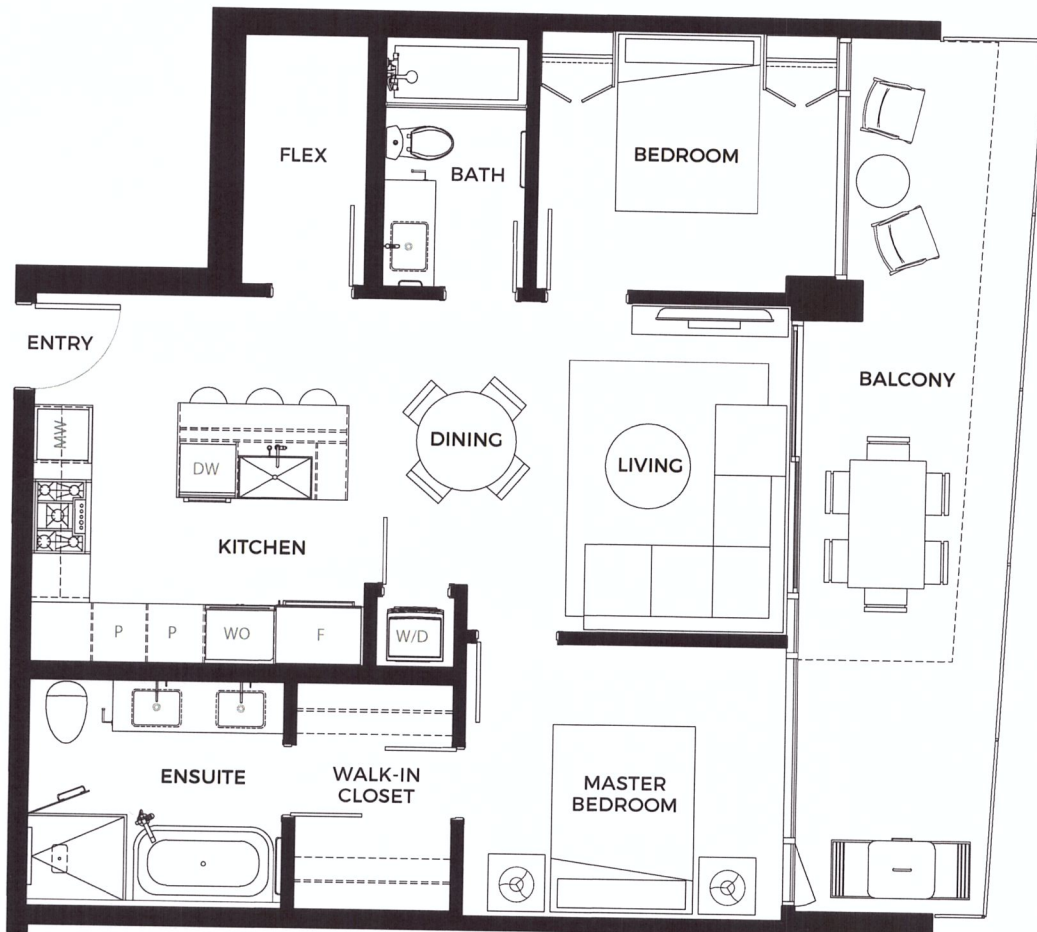
\$ 1.42 PM.

204

\$ 1.43 M.

2 BEDROOM + FLEX

INTERIOR	830 - 835 SF
EXTERIOR	114 - 226 SF
TOTAL	944 - 1,061 SF



LEVEL 2-4

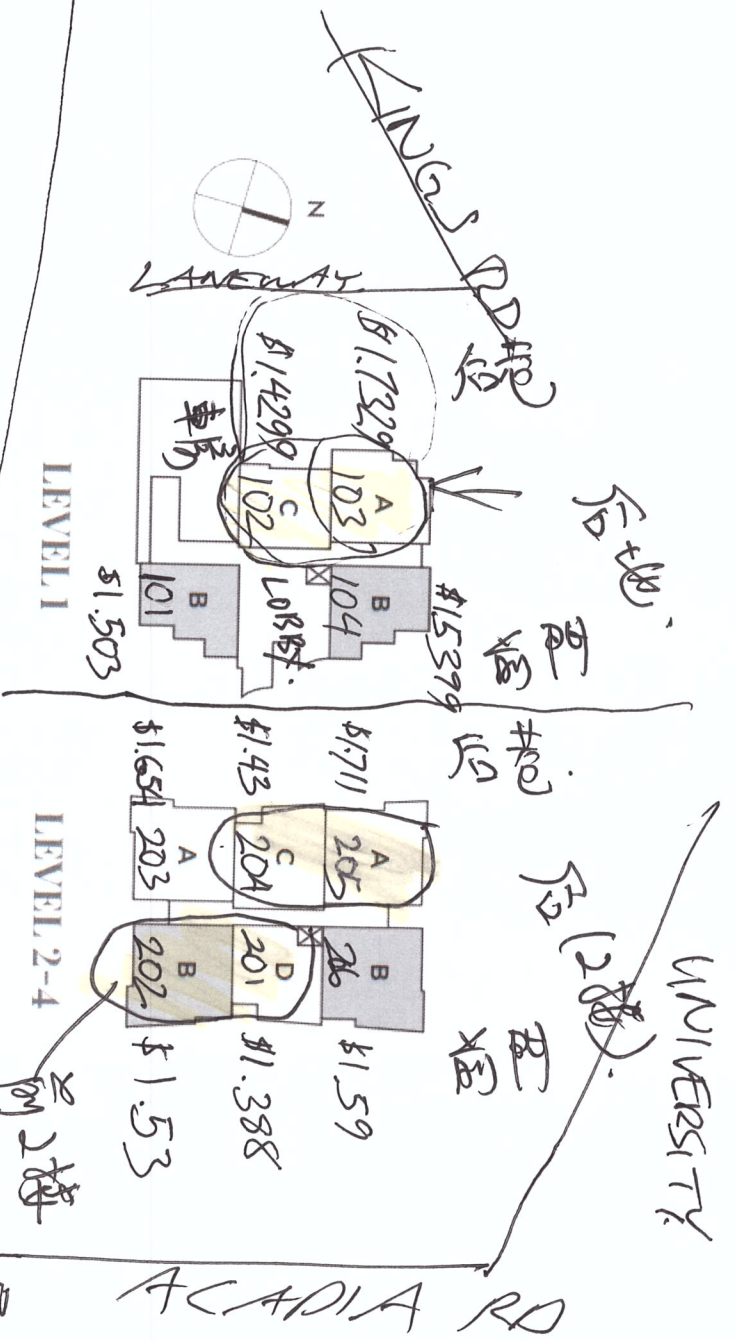


#201
\$1,388M.

#301
\$1,409M

#401 \$1,482M

前上/下



101 + 202 = \$1.503 + 1.53 = \$3.033 前上/下

后地. 102 + 103 = \$1.4299 + 1.7329 = \$3.1628 后地下

后地 205 + 204 = \$1.711 + 1.43 = \$3.131 后地下

\$201 + \$202 = \$1.388 + 1.53 = \$2.918 M.

前 2 楼

Acadia

TORONTO

East Acadia
Reno/Kenjo

ACADIA RD