



MARQ

DRAFT



RARITY. DISTINCTION. WISDOM.

THE MARQ REPRESENTS A RARE OPPORTUNITY TO
OWN A FREEHOLD HOME BY UBC CAMPUS.



EMBRACED BY THE PINNACLE OF HIGHER LEARNING IN VANCOUVER AND SURROUNDED BY THE PICTURESQUE NATURE OF THE WEST COAST, THE MARQ OFFERS AN UNMATCHED WAY OF LIFE IN THE UNIVERSITY ENDOWMENT LANDS ADJACENT TO UBC.



20
MIN DRIVE

DOWNTOWN VANCOUVER



24
MIN DRIVE

YVR AIRPORT



LOCATED WITHIN MINUTES OF THE UBC CAMPUS, THE MARQ'S WALKABLE LOCATION BENEFITS FROM A CULTURAL, EDUCATIONAL AND A RECREATIONALLY IDYLIC WAY OF LIFE.



EDUCATION

- 1 NORMA ROSE POINT ELEMENTARY SCHOOL
- 2 UNIVERSITY HILL ELEMENTARY SCHOOL
- 3 UNIVERSITY HILL SECONDARY SCHOOL
- 4 ST. GEORGE'S SCHOOL
- 5 WEST POINT GREY ACADEMY
- 6 UNIVERSITY OF BRITISH COLUMBIA
- 7 CROFTON HOUSE SCHOOL



ARTS & CULTURE

- 1 MUSEUM OF ANTHROPOLOGY
- 2 MORRIS & HELEN BELKIN ART GALLERY
- 3 PACIFIC MUSEUM OF EARTH
- 4 CHAN CENTRE FOR THE PERFORMING ARTS
- 5 BEATY BIODIVERSITY MUSEUM
- 6 IRVING K. BARBER LEARNING CENTRE



FOOD & SHOPPING

- 1 WESBROOK VILLAGE
- 2 WEST 4TH SHOPPING
- 3 KERRISDALE VILLAGE
- 4 UNIVERSITY BOULEVARD CENTRAL
- 5 UNIVERSITY VILLAGE
- 6 OAKRIDGE CENTRE MALL
- 7 WEST 10TH SHOPPING
- 8 DUNBAR SHOPPING



RECREATION

- 1 SPANISH BANKS BEACH PARK
- 2 PACIFIC SPIRIT REGIONAL PARK
- 3 UNIVERSITY ENDOWMENT LANDS
- 4 JERICO BEACH
- 5 LOCARNO BEACH PARK
- 6 UBC BOTANICAL GARDEN
- 7 NITOBÉ MEMORIAL GARDEN
- 8 UBC FARM
- 9 WRECK BEACH
- 10 ROYAL VANCOUVER YACHT CLUB
- 11 JERICO TENNIS CLUB
- 12 ARBUTUS CLUB
- 13 UBC AQUATIC CENTRE
- 14 THUNDERBIRD PARK
- 15 THUNDERBIRD STADIUM
- 16 WESBROOK COMMUNITY CENTRE
- 17 WINDSOR STABLES
- 18 UBC TENNIS CLUB



GOLF COURSES

- 1 UNIVERSITY GOLF CLUB
- 2 SHAUGHNESSY GOLF & COUNTRY CLUB
- 3 POINT GREY GOLF & COUNTRY CLUB
- 4 MARINE DRIVE GOLF CLUB



AN UNCOMPROMISING STYLE, A COMMITMENT TO NATURAL SUSTAINABILITY, AND AN ADHERENCE TO FINE CRAFTSMANSHIP, THE LEGACY OF THE MARQ WILL BE ONE THAT ENDURES FOR GENERATIONS.





A CITY WITHIN A CITY, THE MARQ IS SURROUNDED
BY CONVENIENCES AND EMBRACED BY AN
ABUNDANCE OF NATURE - A COMBINATION THAT
EMBODIES A RENOWNED WAY OF LIFE. IT IS ELEGANT
AND ELEMENTAL, LUXURIOUS AND LOCAL, AND IT
ENCOMPASSES A NATURALLY RICH WAY TO LIVE.





THE MARQ'S IMPECCABLY CURATED INTERIORS, THOUGHTFUL DETAILS, AND THE FINEST CRAFTSMANSHIP ARE COMPLEMENTED BY TECHNOLOGY TO CREATE HOMES THAT ARE EFFORTLESS TO LIVE IN, AND LUXURIOUS IN EVERY SENSE.





THE BESPOKE STYLE OF THE MARQ'S INTERIORS SPEAKS TO A SENSE OF TRANQUILITY WITH RICH MATERIALS AND WARM TOUCHPOINTS. TOGETHER THEY CREATE AN EXCLUSIVE SPA-LIKE AESTHETIC YOU CAN RETREAT TO EVERY DAY.





SUBTLE TERRACES ACCENTED WITH PANORAMIC WINDOWS AND EXPANSIVE OUTDOOR LIVING SPACES DEFINE THE MARQ'S ARCHITECTURAL STYLE. ITS DESIGN APPLIES NATURAL LIGHT, WARMTH AND EFFICIENCY TO CREATE A COLLECTION OF HOMES THAT SET NEW STANDARDS FOR SUSTAINABILITY IN THE UBC COMMUNITY.



THE
MARQ
OF EXCELLENCE

EXCELLENCE COMES FROM WITHIN. IT IS A WAY OF LIFE THAT IS BUILT INTO EVERYTHING OUR TEAM DOES. IT FOLLOWS A SET OF VALUES AND PRINCIPLES THAT CRAFTS OBJECTS THAT ARE NOT ONLY EFFORTLESSLY FUNCTIONAL AND BEAUTIFUL, BUT ALSO CREATES A LEGACY THAT WILL BE CHERISHED BY GENERATIONS TO COME.

DEVELOPER

WESTLAND

westlandliving.ca

INTERIOR DESIGN

BAM INTERIOR

baminterior.com

ARCHITECTURE

**ROSITCH HEMPHILL
ARCHITECTS**

CONSTRUCTION

QUORUM GROUP
quorumgroup.net

DRAFT

Westland

WESTLANDLIVING.CA/THEMARQ

This is not an offering for sale. Illustrations and renderings are for marketing purposes only and may differ from finished product. The developer reserves the right to change or modify the offer, features, specifications and floorplans without prior notice. All amenities are planned and are subject to change without notice. E&OE.



FEATURES

EMBRACED BY A REMARKABLE LOCATION JUST STEPS FROM THE UBC CAMPUS, DESIGNED BY A RENOWNED TEAM, AND GRACED BY BEAUTIFULLY SCULPTED INTERIORS AND LUXURIOUS DETAILS, THE MARQ REPRESENTS AN UNMATCHED WAY OF LIFE.

EPICUREAN KITCHENS

- Exquisite Italian-imported cabinets from Inform Projects add an unmatched level of style to every home
- Integrated pull-out pantry organizer will inspire your culinary spirit*
- Integrated pull-out spice rack and small appliance garage ensures your kitchen is always within reach*
- Convenient custom-designed cutlery drawer, recycling and garbage receptacles
- Engineered quartz countertop and slab backsplash naturally accent the clean lines of the cabinets
- Continuous under-cabinet LED linear lighting
- Legrand Adorne pop-out outlets complement the elegant aesthetic found throughout the kitchen
- Stainless steel Kohler undermount sink with graduated edges and accessories
- State-of-the-art Gaggenau appliances for the culinary connoisseur:
 - 36" / 30" integrated fridge
 - 30" 5-burner gas cooktop
 - 30" wall oven
 - 24" built-in microwave
 - 24" integrated dishwasher

SMART HOMES

- All parking stalls are EV ready
- Electronic fob access control system and video monitoring of building entry points creates additional security
- Pre-wired for high-speed Internet and digital cable
- Dual USB outlets in kitchen, living room and master bedroom ensure that you're always connected
- Secure underground parking and bicycle storage rooms

ALLURING INTERIORS

- Designed by award-winning Rositch Hemphill Architects
- Built by Quorum Group, who have over 3 decades of quality and craftsmanship experience
- 2 custom colour palettes by BAM Interior
- 9' ceilings in main living areas
- The natural feel of 7 1/2" wide plank engineered oak hardwood floors
- Ergonomic side-by-side Blomberg washers and dryers with countertop and laundry storage organizers*
- Roll-down window shades and air conditioning gives you privacy and year-round comfort
- Illuminated closet organizers create a continuous sense of elegance in every walk-in closet
- Built-in closet with night tables in all 2nd & 3rd bedrooms
- Legrand Adorne electrical outlets throughout enhances the integrated aesthetic in each home*

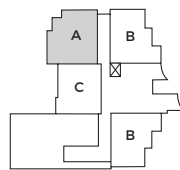
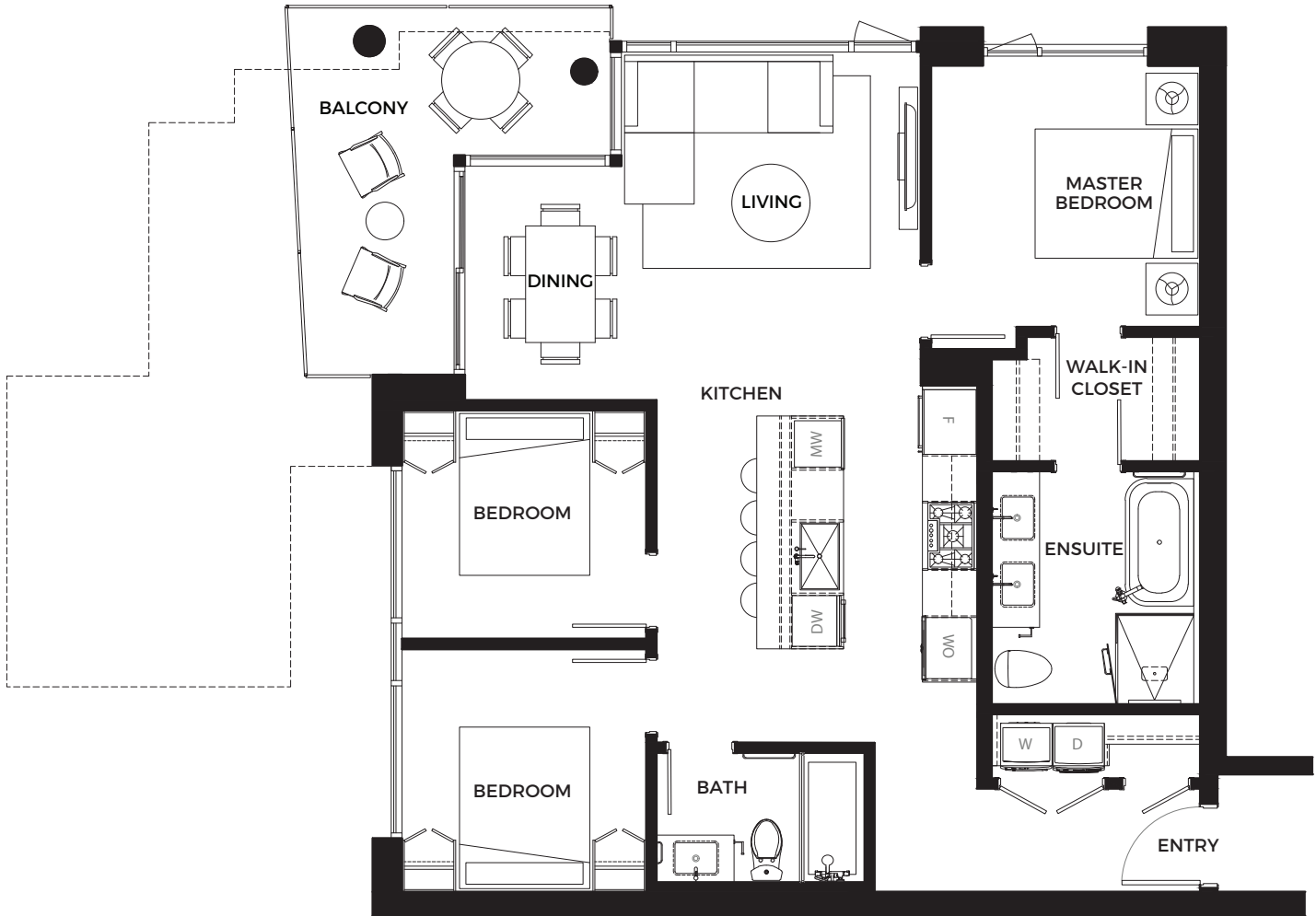
MASTER ENSUITES

- Kohler Veil elongated toilet with integrated bidet, heated seat, LED night light and hands-free opening and closing seat cover*
- Custom mirrored medicine cabinet with halo-lit mirror doors, and elegant double wall-mounted Hansgrohe faucets and double wall-hung vanity
- Contemporary Silestone engineered stone with linear drain system in all showers
- Frameless glass shower doors create a sense of spa-like openness in the bathrooms
- Engineered quartz countertops, large format porcelain slab walls and floors
- Opulent free-standing Acri-Tec bathtub with floor mount tub spout, rain showerhead, and hand shower
- Integrated quartz ledge on free-standing tub and shower wall creates additional storage

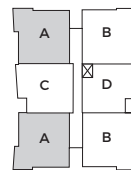
*SELECT HOMES ONLY

3 BEDROOM

INTERIOR	1,020 SF
EXTERIOR	123 - 357 SF
TOTAL	1,143 - 1,377 SF



LEVEL 1

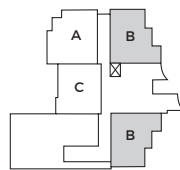


LEVEL 2-4

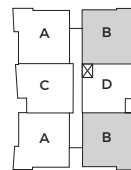


2 BEDROOM

INTERIOR	915 SF
EXTERIOR	264 - 417 SF
TOTAL	1,179 - 1,332 SF



LEVEL 1

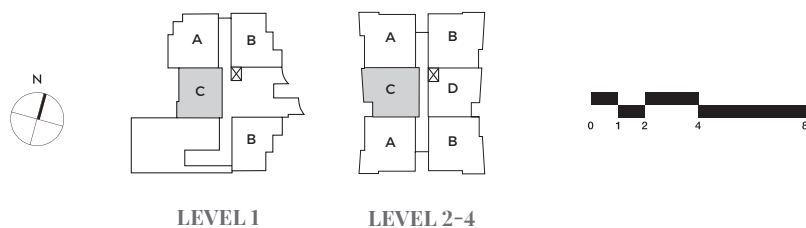


LEVEL 2-4



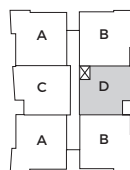
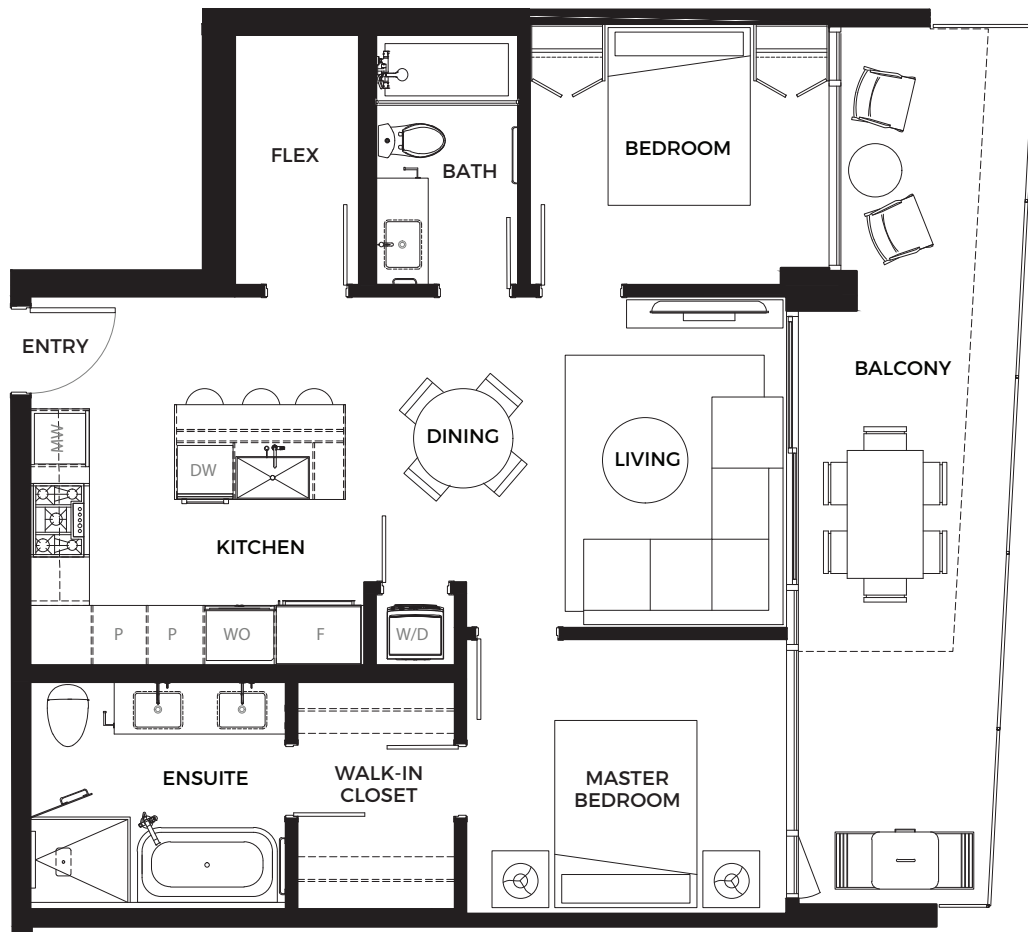
2 BEDROOM + FLEX

INTERIOR	888 - 890 SF
EXTERIOR	170 - 368 SF
TOTAL	1,058 - 1,258 SF



2 BEDROOM + FLEX

INTERIOR	830 - 835 SF
EXTERIOR	114 - 226 SF
TOTAL	944 - 1,061 SF



LEVEL 2-4