

# KININGS CROSSING





# THIS IS THE TIPPING

# POINT

YOU'VE SEEN  
EDMONDS TRANSFORM.  
HERE'S WHERE IT  
GETS EXCITING.

This established Burnaby neighbourhood has become a destination buzzing with excitement. Services and amenities like a modern library, state-of-the-art community centre and Highgate Village – an outdoor shopping mall – are all anchored by accessible bus transit and Edmonds SkyTrain Station. Now, the final piece of Edmonds is set to arrive. With Kings Crossing, Edmonds will easily rival the lifestyle found in neighbourhoods like Metrotown and Oakridge by combining convenience, outdoor leisure and beautiful homes with the pulse of a big city.





# ONE CORNER

## THREE TOWERS

ENDLESS CONVENIENCE

BACKED BY CRESSEY

WHERE KINGSWAY AND EDMONDS INTERSECT COMES A DYNAMIC NEW LIVING, SHOPPING AND WORKING DISTRICT. IT'S ALL WALKABLE – AND IT'S RIGHT BY RAPID TRANSIT. Kings Crossing by Cressey will create a brand new town centre with diverse retail, convenient services and office space, along with three soaring residential towers offering quality-built 1, 2 and 3-bedroom homes. Kings Crossing by Cressey makes it official: Edmonds is an exciting neighbourhood whose transformation is almost complete.





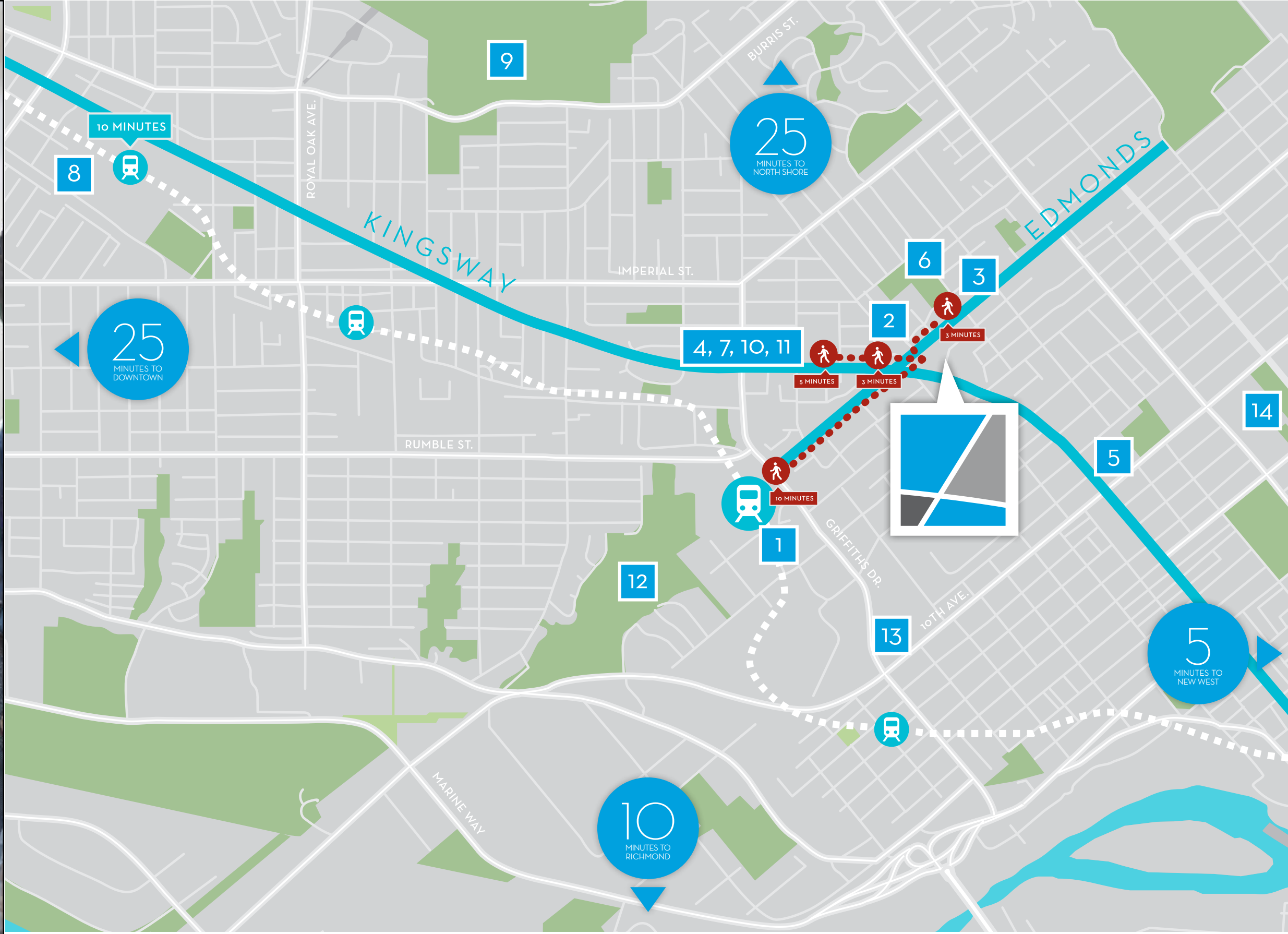
# WHAT'S HAPPENING IN BURNABY SOUTH **IS EPIC**

WHETHER THIS IS YOUR FIRST HOME OR YOUR LAST, YOU WANT IT TO BE PERFECT. Perfectly located, perfectly designed, and with the perfect balance of walk-to shops, restaurants and transit right outside your door. At Kings Crossing in Edmonds, that's what awaits. You'll be living in the middle of an exciting neighbourhood — just two transit stops from Metrotown and surrounded by convenience. You'll also be living in a home built by professionals who execute flawlessly on every detail. Always.





# WHAT'S HAPPENING IN BURNABY SOUTH



## CONVENIENCE IS RIGHT HERE AND ALL AROUND

1. Edmonds SkyTrain Station
2. Tommy Douglas Public Library
3. Edmonds Community Centre
4. Highgate Village
5. St. Thomas More Collegiate
6. Edmonds Park
7. Save-On-Foods
8. Metrotown
9. Deer Lake Park
10. Shoppers Drug Mart
11. Starbucks
12. Byrne Creek Ravine Park
13. Byrne Creek Secondary School
14. New Westmister Secondary School



### DEER LAKE PARK

Known for its picturesque setting and outdoor summer concert series, Deer Lake Park is a hub of activity. Enjoy a lakeside picnic or nearby amenities, including the Shadbolt Centre, Burnaby Village Museum and Hart House Restaurant.



### TOMMY DOUGLAS PUBLIC LIBRARY

Modern inside and out, this newly built library offers a computer lab and study rooms, drop-in ESL classes, workshops and movie nights.



### EDMONDS COMMUNITY CENTRE

With an indoor water park and 25-metre pool, sports courts, exercise studios and programming for all ages, this new community centre has become a point of pride for Burnaby.



### BYRNE CREEK RAVINE PARK

Under a big-sky canopy, enjoy the great outdoors here year round by strolling, hiking, cycling, jogging, birdwatching and picnicking in this natural area.



### HIGHGATE VILLAGE

With YYoga and Club 16 Trevor Linden Fitness alongside Canada Post and Signature Liquor Store, convenience and well-being converge at this three-level outdoor shopping centre that's within walking distance.



### EDMONDS PARK

The community centre, brand-new tennis courts, a great lawn and outdoor plaza will soon be joined by a children's playground, outdoor stage, spray pool, basketball court and walking circuit.



### ST. THOMAS MORE COLLEGIATE

Known equally for its fine arts, business and athletic programs, this independent private high school was ranked 15th out of 316 Vancouver schools — and it's right near Kings Crossing.





# GROCERIES AND MORE

## HERE'S WHAT'S INCLUDED AT KINGS CROSSING.

### CAFÉS & RESTAURANTS

Morning lattes at your neighbourhood coffee shop are an elevator ride away. Or have a tasty lunch or evening dinner with friends at the local restaurants just downstairs.

### BANKING

With a reputable financial institution as part of Kings Crossing's first-floor services, your banking needs can be addressed with ease.

### SHOPPING

Farm-fresh veggies and all your grocery needs can be found at this impressively large supermarket, conveniently located downstairs.

### SERVICES

A host of new professional services will be close at hand to Kings Crossing homeowners, from pharmacies and medical clinics to general office space.





# SOAR

## ABOVE THE CITY

HAVE A BURNABY ADDRESS, A LIVELY STREET SCENE AND A RESPECTED CRESSEY HOME WITHOUT PAYING MORE THAN YOU SHOULD.

KINGS CROSSING WILL BRING THREE COMMANDING RESIDENTIAL TOWERS, ranging from 28 to 36 storeys, to the re-imagined neighbourhood of Edmonds. Take in day-to-night views from your living room or private patio and you'll gain a whole new appreciation for this city. It's growing. It's fast-paced. It's easy to get around and even easier to be entertained close to home.

These spectacular concrete 1, 2 and 3-bedroom homes, ranging from 543 to 1,200 square feet, will embody Cressey's renowned standards and finishes, including the revolutionary CresseyKitchen™. What's more: you'll even have your choice of two kitchen layouts so the cooking and entertaining space you've always dreamed of can finally be yours.







# DESIGN IS IN THE DETAILS

FLOORPLANS AND FEATURES UNLIKE  
ANYTHING ELSE IN BURNABY SOUTH

Make no mistake about it: these are impressive floorplans with room to roam. They start with open-concept living rooms with smooth, over-height ceilings, and layouts that allow for a range of different furniture placements. Bathrooms feel like you've entered a boutique spa, and bedrooms are flexible and extra spacious. Now consider your outdoor patio — It feels like an extension of your home where you can take in the view, breathe in the fresh air and congratulate yourself on a smart purchase, one your lifestyle will thank you for.





### IT'S ALL IN THE DETAILS

- Homes feel extra spacious with over-height ceilings and layouts you can furnish easily and in multiple ways
- Wide-plank wood laminate flooring throughout adds a contemporary pop from the moment you enter
- Solid core doors in every room increase acoustic and thermal insulation and provide added security
- A resilient, wood-grained floating vanity with soft, under-cabinet lighting adds elegance to the bathroom
- Enjoy rich porcelain tile flooring, and beautiful and durable quartz countertops and backsplashes, in main bathrooms
- Modern sinks with polished chrome faucets add sparkle to each bathroom
- Efficient, forced-air heating and cooling keeps you comfortable all year round





# THE CRESSEY KITCHEN™

AS BEAUTIFUL AS IT IS FUNCTIONAL, the CresseyKitchen™ is equally suited for gourmet chefs who love entertaining and design-lovers who want to surround themselves with beautiful things. On the practical side, the CresseyKitchen™ offers the most intelligent use of space of any kitchen on the market today, with wide passages that flow seamlessly into living areas. On the style side, kitchens feature the fit and finish homeowners are looking for, including custom-feeling cabinetry, European appliances and exquisite stone countertops. With more storage, more counter space and more thought put into every detail, the CresseyKitchen™ offers more useable space than kitchens in most single-family homes. And, as if that isn't enough, homes at Kings Crossing offer two incredible kitchen layouts to choose from.



# THE CRESS KITCHEN

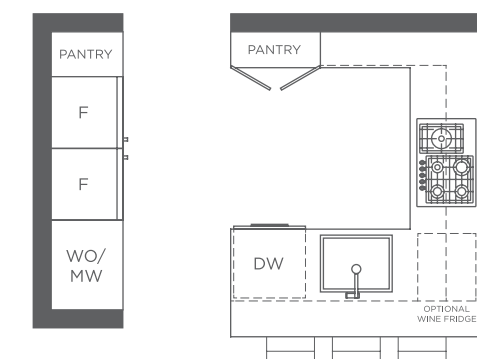


CHOOSE BETWEEN TWO KITCHEN LAYOUTS  
WITH MORE EXTRAS THAN YOU CAN COUNT



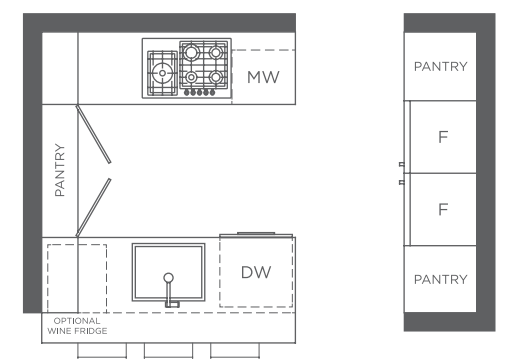
## CLASSIC CRESSEYKITCHEN™

- **APPLIANCE CHEF'S WALL:**  
Kitchen space is dramatically increased by integrating your double-door refrigerator, oven and microwave into your kitchen's adjacent wall
- **SLEEK, SLIDE-OUT HOOD FAN:**  
The Faber hood fan adds a modern touch to your kitchen, and is seamlessly integrated into your cabinetry above the cooktop
- **GAS COOKTOP BESIDE SINK:**  
Having a gas cooktop located next to your kitchen sink adds convenience and creates space for extra drawers to keep cooking utensils near where you cook



## FEATURE CRESSEYKITCHEN™

- **PANTRY CHEF WALL:**  
Welcome to a bounty of storage. A wall of pantry shelving sits across from your chef's wall, which contains another two pantries for storing even more ingredients and supplies
- **DESIGNER CHIMNEY HOOD FAN:**  
An impressive focal point for any kitchen, this designer hood fan sits in front of a full backsplash wall that acts as a beautiful canvas in your new home
- **GAS COOKTOP ACROSS FROM SINK :**  
Enjoy the luxury of a gas cooktop with a convenient under-counter oven, all within easy access to the sink located in the kitchen island







LEISURE TIME  
ON A WHOLE NEW  
LEVEL



SPEND YOUR FREE TIME ENJOYING THE GLORIOUS ROOFTOP PARK, SHOOTING HOOPS, OR WATCHING A MOVIE UNDER THE STARS WITH FRIENDS.

**1** ROOFTOP GARDENS

Garden plots, a kids play area, an outdoor fire pit and bocce court are all located on the podium rooftop, nestled within green pathways and lush landscaping.

**2** OUTDOOR AMPHITHEATRE

With its dropdown screen and tiered seating for large groups, the open-air theatre is a winning spot to watch the big game or a movie with friends.

**3** SPORTS COURT

Gather your teammates (or make fast friends with your new neighbours) and play a game of basketball, volleyball or floor hockey in Kings Crossing's indoor sports court.

**4** FITNESS CENTRE

Work out in a state-of-the-art, two-level gym complete with a squash court and dedicated yoga/pilates space. Afterwards, enjoy the private change rooms, steam room and relaxing sauna.

**5** LOUNGE

Kick back with friends in the fireside lounge or games room, or hold a business meet up in your tower's meeting room.

**6** CONCIERGE

Each residential tower has its own friendly concierge to handle package deliveries and lend a hand in letting friends or housekeepers into your home.





SPEND YOUR FREE TIME ENJOYING THE GLORIOUS ROOFTOP PARK, SHOOTING HOOPS, OR WATCHING A MOVIE UNDER THE STARS WITH FRIENDS.

1 ROOFTOP GARDENS

Garden plots, a kids play area, an outdoor fire pit and bocce court are all located on the podium rooftop, nestled within green pathways and lush landscaping.

2 OUTDOOR AMPHITHEATRE

With its dropdown screen and tiered seating for large groups, the open-air theatre is a winning spot to watch the big game or a movie with friends.

3 SPORTS COURT

Gather your teammates (or make fast friends with your new neighbours) and play a game of basketball, volleyball or floor hockey in Kings Crossing's indoor sports court.

4 FITNESS CENTRE

Work out in a state-of-the-art, two-level gym complete with a squash court and dedicated yoga/pilates space. Afterwards, enjoy the private change rooms, steam room and relaxing sauna.

5 LOUNGE

Kick back with friends in the fireside lounge or games room, or hold a business meet up in your tower's meeting room.

6 CONCIERGE

Each residential tower has its own friendly concierge to handle package deliveries and lend a hand in letting friends or housekeepers into your home.





# AN ESTABLISHED BUILDER

MAKES ALL THE  
DIFFERENCE



#### BUILD THE BEST HOMES IN THE REGION - THAT'S OUR GOAL

Every Cressey project begins by selecting a memorable location, one blessed with a set of natural advantages found nowhere else in the neighbourhood. But some home collections require an even higher level of diligence to ensure they're right for our homeowners.

#### YOU SPOKE, CRESSEY LISTENED

With Kings Crossing, we knew that maximizing every square inch of our homes would be essential. That's why we created generous floorplans that are also extremely efficient, with great storage solutions and two remarkable kitchen designs that are both ideal for cooking and hosting parties. We created as many great view homes as possible, to give residents a fresh new perspective on this vibrant urban neighbourhood.

#### AND THEN WE DID EVEN MORE

We used our 45+ years of homebuilding experience to bring more uniqueness into each Kings Crossing home – by tweaking the architecture to maximize patios, by selecting rare, beautiful materials and by hunting for greater utility in every surface, drawer and appliance within the renowned CresseyKitchen™.

#### TO CREATE STRIKING PLACES FOR ALL RESIDENTS

At Cressey, we didn't just focus on the insides of the homes at Kings Crossing. We also ensured that the meticulous design and quality of our residents-only amenities are just as spectacular – from breathtaking first impressions as you enter the lobby to the function and finish of the multi-purpose gym, squash court, lounge, patio and so much more.

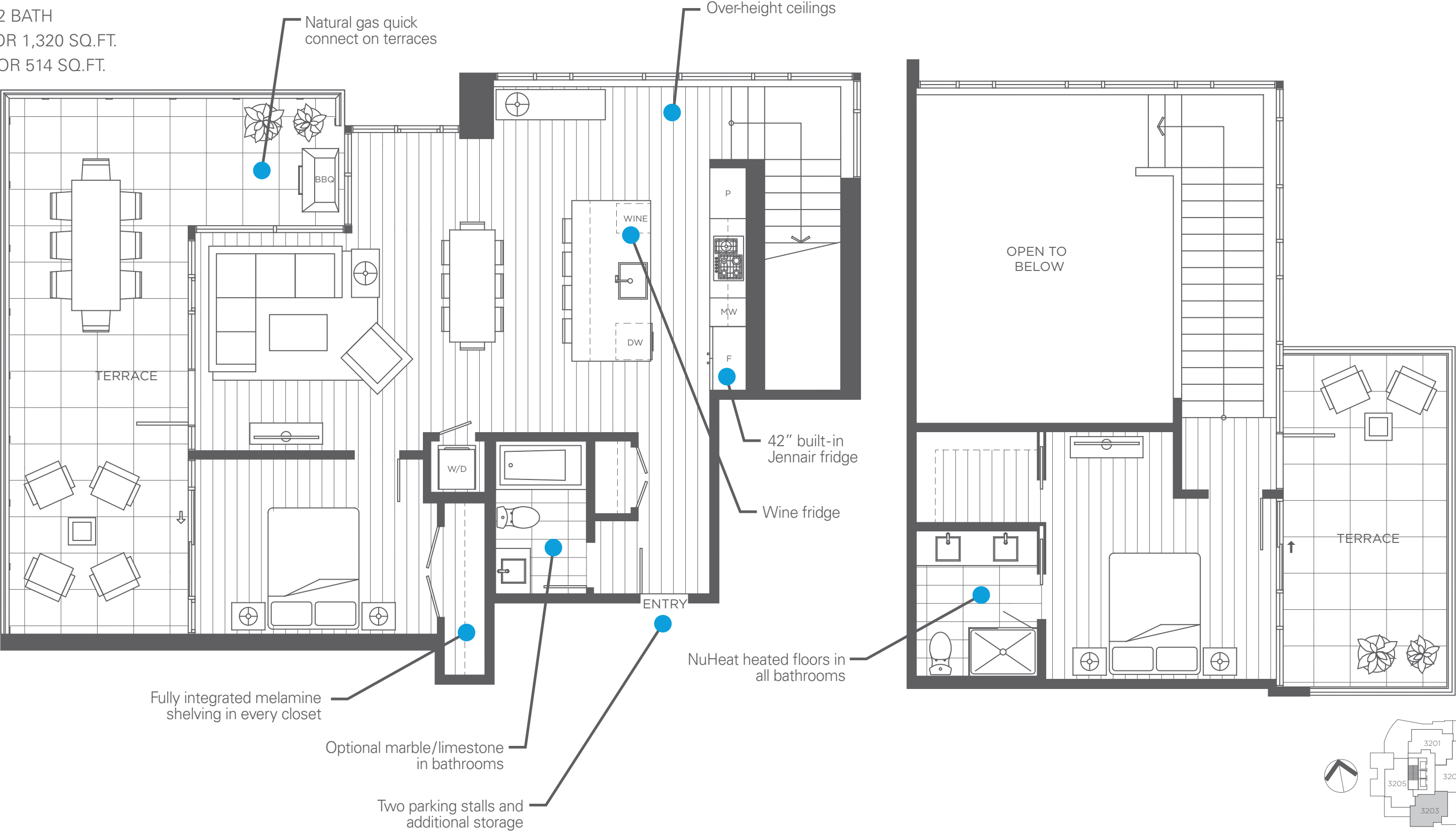




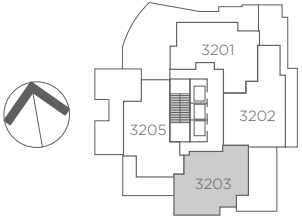
3203

KINGS CROSSING ONE

2 BED, 2 BATH  
INTERIOR 1,320 SQ.FT.  
EXTERIOR 514 SQ.FT.



The developer reserves the right to make modifications to floorplans, project design, materials and specifications to maintain the high standard of this development E.&O.E.



PENTHOUSE LEVEL

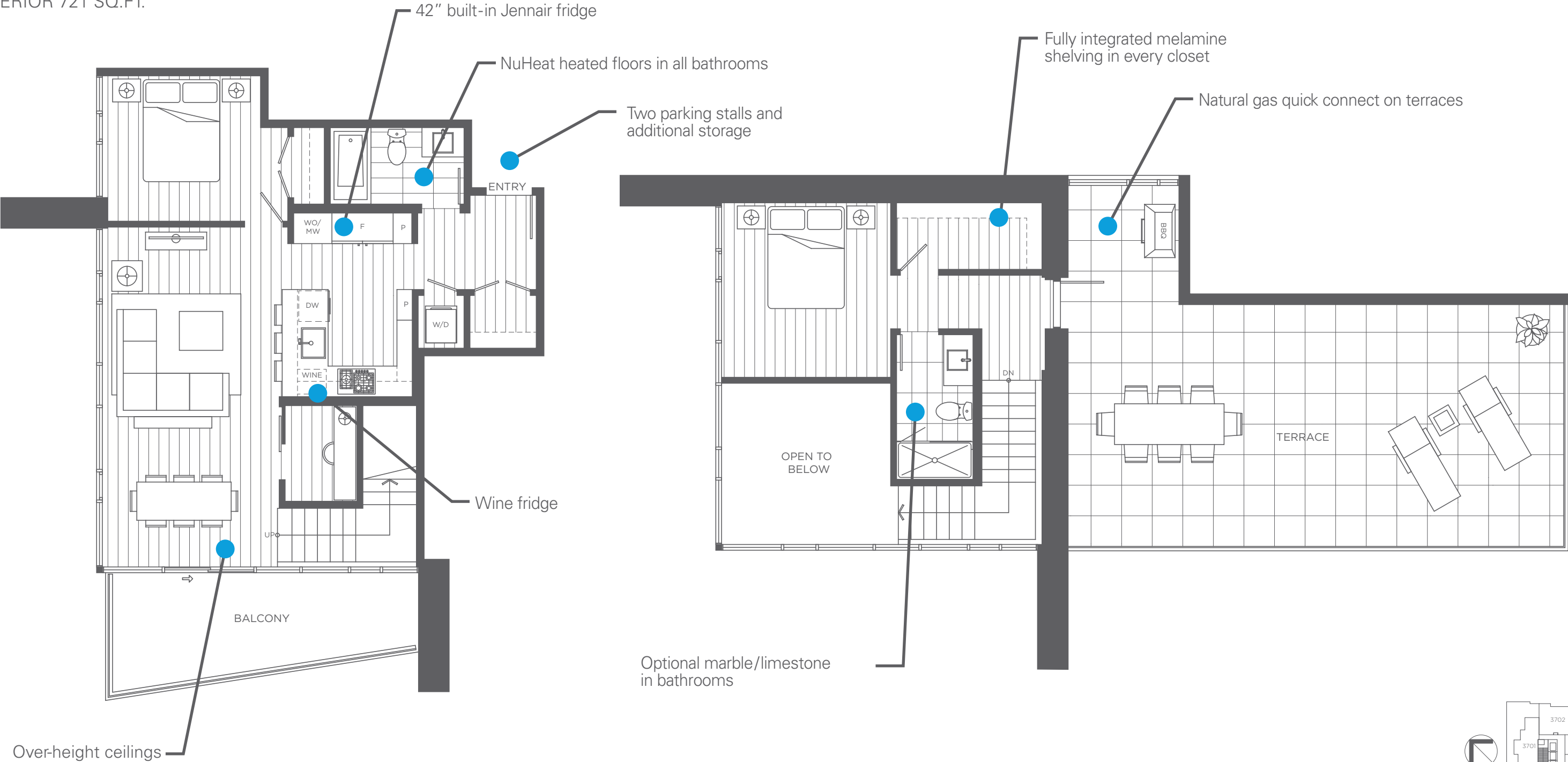
KINGS CROSSING ONE



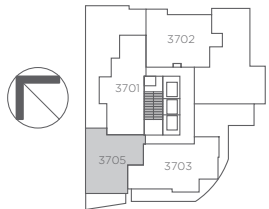
# 3705

## KINGS CROSSING TWO

2 BED + FLEX, 2 BATH  
INTERIOR 1,046 SQ.FT.  
EXTERIOR 721 SQ.FT.



Optional marble/limestone  
in bathrooms



PENTHOUSE LEVEL

KINGS CROSSING TWO

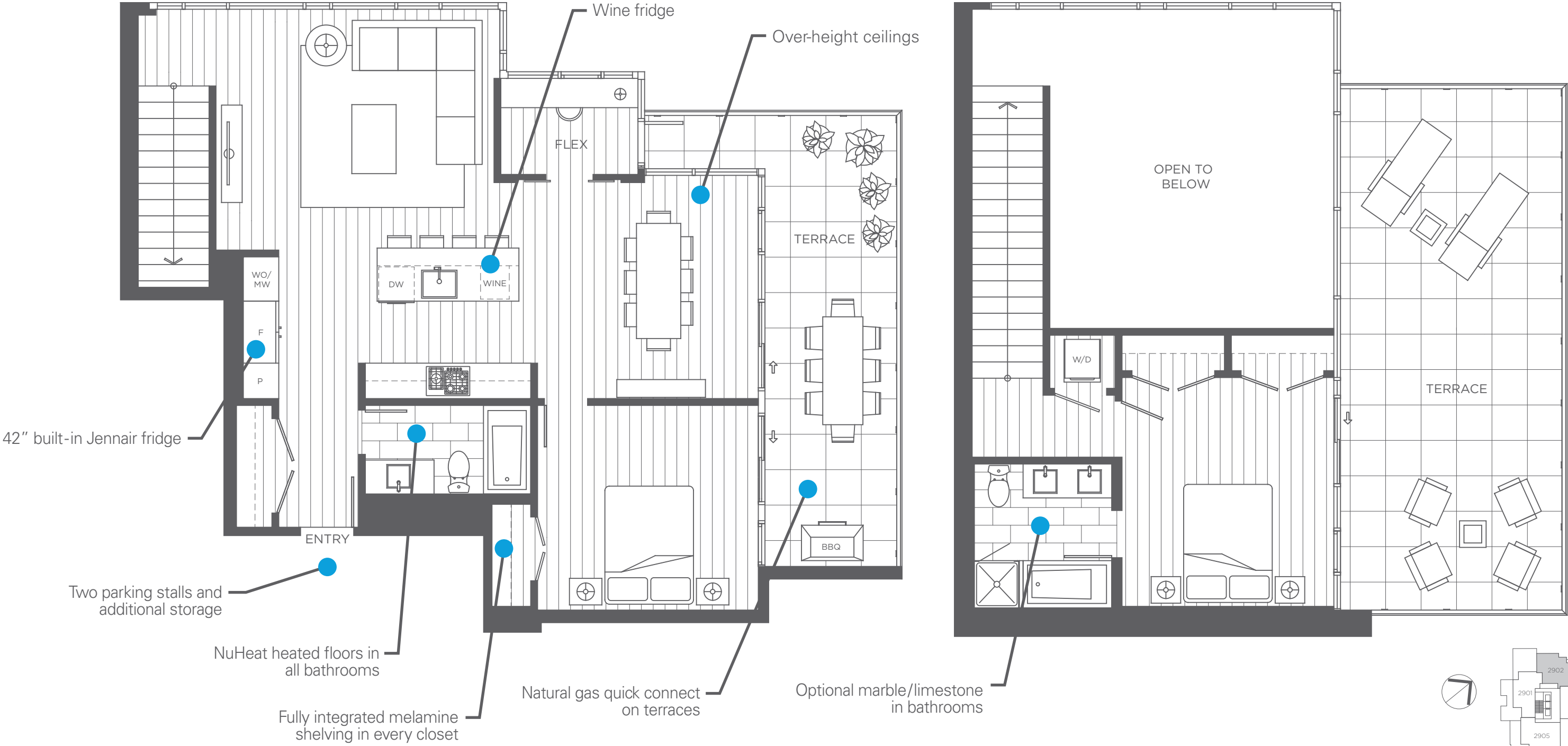
The developer reserves the right to make modifications to floorplans, project design, materials and specifications to maintain the high standard of this development E.&O.E.



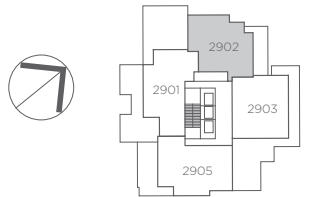
# 2902

## KINGS CROSSING THREE

2 BED + FLEX, 2 BATH  
INTERIOR 1,407 SQ.FT.  
EXTERIOR 554 SQ.FT.



The developer reserves the right to make modifications to floorplans, project design, materials and specifications to maintain the high standard of this development E.&O.E.



PENTHOUSE LEVEL

KINGS CROSSING THREE



# THE FINAL PIECE KINGS OF EDMONDS' TRANSFORMATION IS CROSSING

EDMONDS' RENEWAL OVER THE LAST 10 YEARS HAS BEEN ASTONISHING. THAT'S WHY KINGS CROSSING IS POISED TO OFFER WHAT NO OTHER HOME COLLECTION CAN



#### EDMONDS IS ALREADY GREAT:

Walk to shops, services, grocery, cafes, yoga, gyms, community centre, schools and more.



#### IT'S A SHORT WALK TO THE SKYTRAIN:

Get to Metrotown in 5 minutes and Downtown in just 20 minutes.



#### GET MORE FOR YOUR MONEY:

Pay less for a home here than you would in Metrotown and get more for your money? Yes, please.



#### 360° VIEWS:

Take in soaring views from any direction as far as the eye can see.



#### THE CRESSEY DIFFERENCE:

Our kitchens, floorplans and amenities all stem from a single goal: to build the best homes in the city, without exception.





**CRESSEY**



