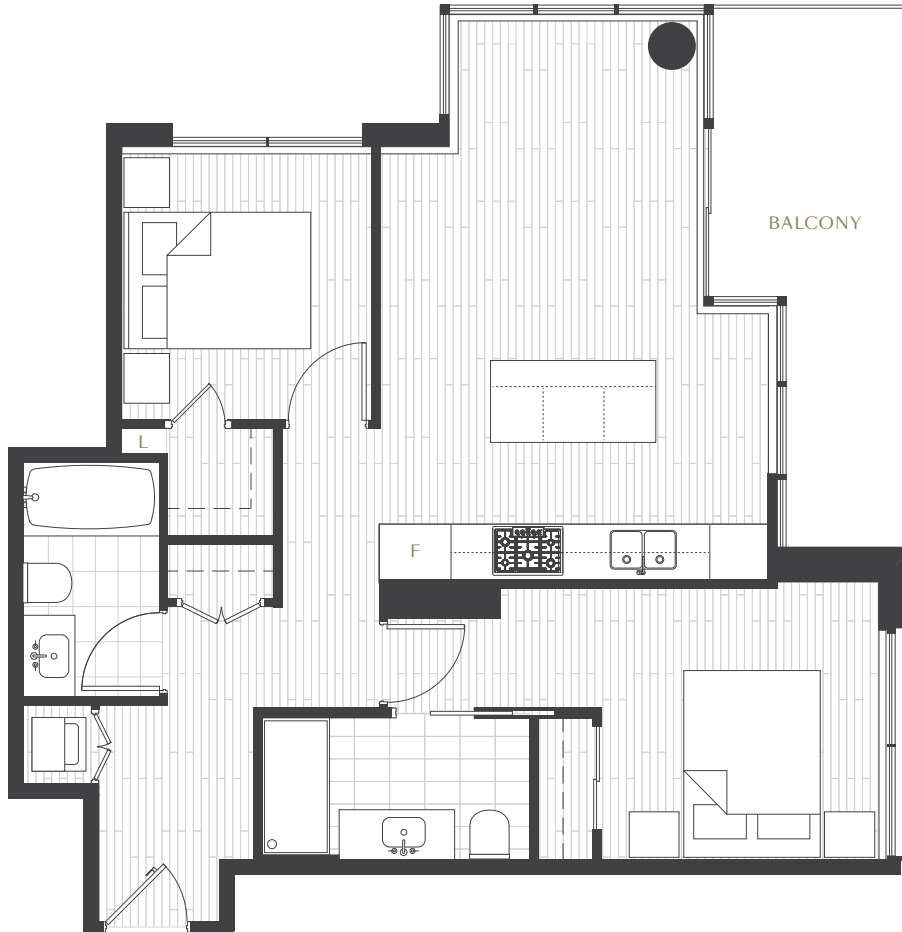


PARK  
WEST

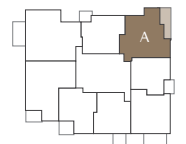
AT LIONS GATE

# PLAN A

2 Bedroom | Living 811 sqft\* | Balcony 116 sqft



TOWER 1 & 2



LEVELS 3-7, 9-11

\*Living space refers to architectural area. The surveyed size of this plan is 793 sqft.

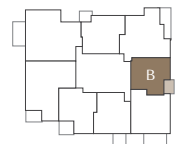
The developer makes no representations or warranties and reserves the right to make changes and modifications to the information contained herein. Any information contained herein including, without limitation, maps, views, photography, development model and digital renderings of architecture and interiors are for illustration purposes only and may not be relied upon. Floorplans, layouts and finishes are subject to change. Park West at Lions Gate is currently not an offering for sale. Such offering may only be made with a disclosure statement. E.&O.E.

# PLAN B

1 Bedroom | Living 513 sqft\* | Balcony 64 sqft



TOWER 1 & 2



LEVELS 3-11

\*Living space refers to architectural area. The surveyed size of this plan is 503 sqft.

PARK  
WEST

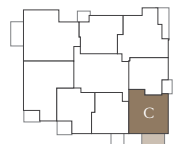
AT LIONS GATE

# PLAN C

1 Bedroom + Flex | Living 667 sqft\* | Balcony 109 sqft



TOWER 1 & 2



LEVELS 3-7, 9-11

\*Living space refers to architectural area. The surveyed size of this plan is 646 sqft.

The developer makes no representations or warranties and reserves the right to make changes and modifications to the information contained herein. Any information contained herein including, without limitation, maps, views, photography, development model and digital renderings of architecture and interiors are for illustration purposes only and may not be relied upon. Floorplans, layouts and finishes are subject to change. Park West at Lions Gate is currently not an offering for sale. Such offering may only be made with a disclosure statement. E.&O.E.

PARK  
WEST

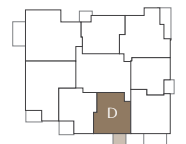
AT LIONS GATE

# PLAN D

1 Bedroom | Living 580 sqft\* | Balcony 64 sqft



TOWER 1



LEVELS 3-11

\*Living space refers to architectural area. The surveyed size of this plan is 572 sqft.

The developer makes no representations or warranties and reserves the right to make changes and modifications to the information contained herein. Any information contained herein including, without limitation, maps, views, photography, development model and digital renderings of architecture and interiors are for illustration purposes only and may not be relied upon. Floorplans, layouts and finishes are subject to change. Park West at Lions Gate is currently not an offering for sale. Such offering may only be made with a disclosure statement. E.&O.E.

PARK  
WEST

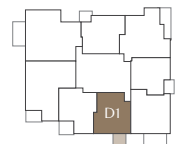
AT LIONS GATE

# PLAN D1

1 Bedroom | Living 580 sqft\* | Balcony 64 sqft



TOWER 2



LEVELS 3-11

\*Living space refers to architectural area. The surveyed size of this plan is 572 sqft.

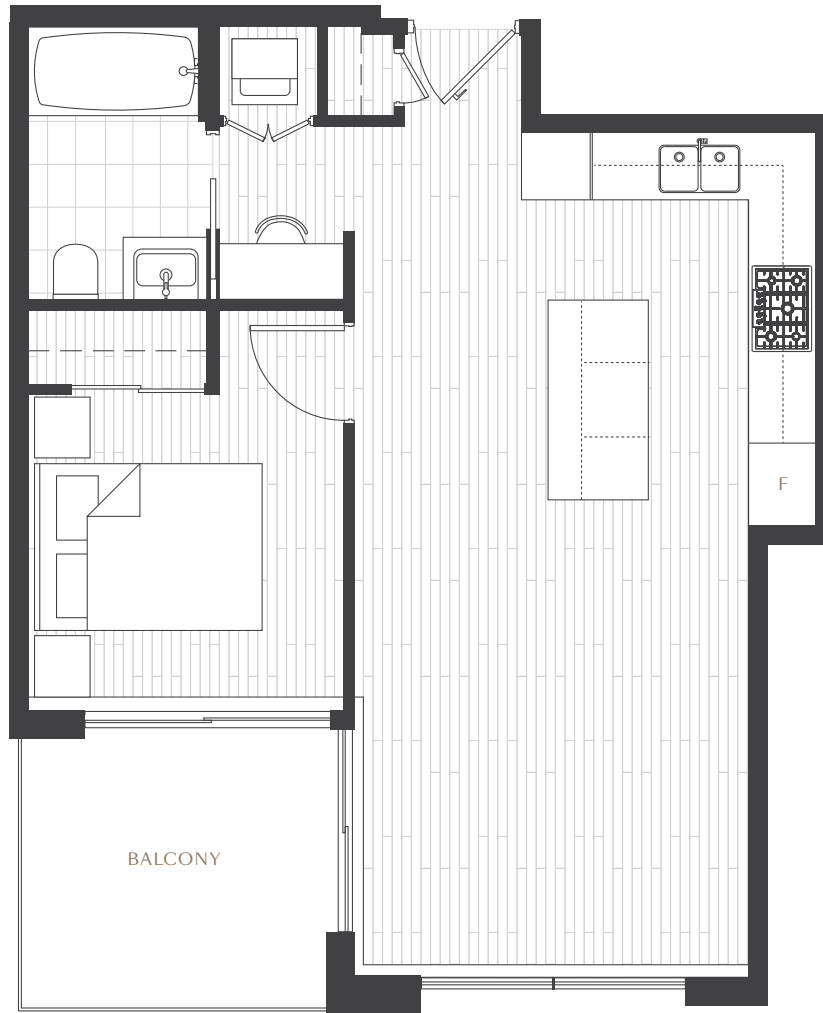
The developer makes no representations or warranties and reserves the right to make changes and modifications to the information contained herein. Any information contained herein including, without limitation, maps, views, photography, development model and digital renderings of architecture and interiors are for illustration purposes only and may not be relied upon. Floorplans, layouts and finishes are subject to change. Park West at Lions Gate is currently not an offering for sale. Such offering may only be made with a disclosure statement. E.&O.E.

PARK  
WEST

AT LIONS GATE

# PLAN E

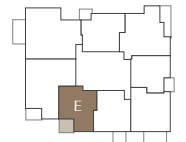
1 Bedroom | Living 585 sqft\* | Balcony 78 sqft



BALCONY



TOWER 1 & 2



LEVELS 3-11

\*Living space refers to architectural area. The surveyed size of this plan is 575 sqft.

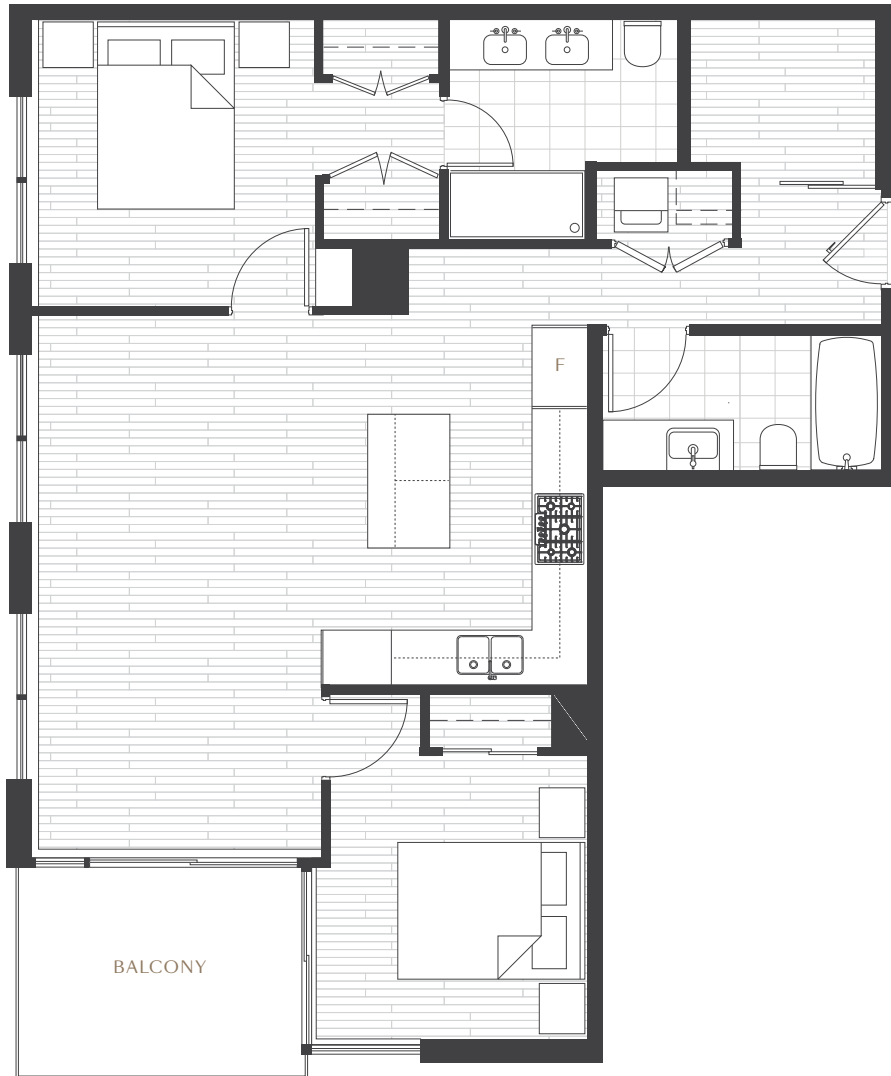
The developer makes no representations or warranties and reserves the right to make changes and modifications to the information contained herein. Any information contained herein including, without limitation, maps, views, photography, development model and digital renderings of architecture and interiors are for illustration purposes only and may not be relied upon. Floorplans, layouts and finishes are subject to change. Park West at Lions Gate is currently not an offering for sale. Such offering may only be made with a disclosure statement. E.&O.E.

PARK  
WEST

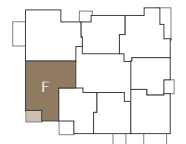
AT LIONS GATE

# PLAN F

2 Bedroom + Den | Living 924 sqft\* | Balcony 76 sqft



TOWER 1 & 2



LEVELS 4-11

\*Living space refers to architectural area. The surveyed size of this plan is 903 sqft.

The developer makes no representations or warranties and reserves the right to make changes and modifications to the information contained herein. Any information contained herein including, without limitation, maps, views, photography, development model and digital renderings of architecture and interiors are for illustration purposes only and may not be relied upon. Floorplans, layouts and finishes are subject to change. Park West at Lions Gate is currently not an offering for sale. Such offering may only be made with a disclosure statement. E.&O.E.

PARK  
WEST

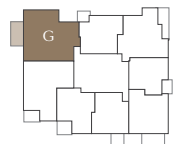
AT LIONS GATE

# PLAN G

2 Bedroom | Living 900 sqft\* | Balcony 125 sqft



TOWER 1 & 2



LEVELS 3-9

\*Living space refers to architectural area. The surveyed size of this plan is 886 sqft.

The developer makes no representations or warranties and reserves the right to make changes and modifications to the information contained herein. Any information contained herein including, without limitation, maps, views, photography, development model and digital renderings of architecture and interiors are for illustration purposes only and may not be relied upon. Floorplans, layouts and finishes are subject to change. Park West at Lions Gate is currently not an offering for sale. Such offering may only be made with a disclosure statement. E.&O.E.

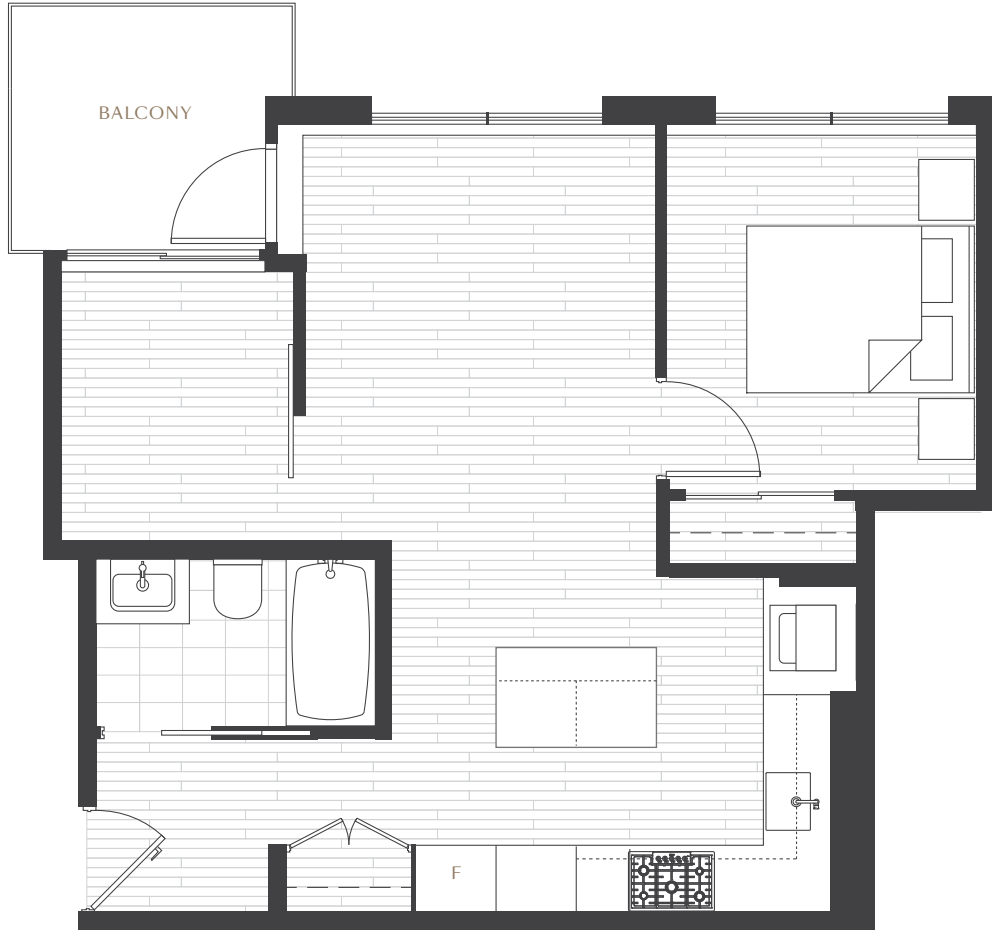


PARK  
WEST

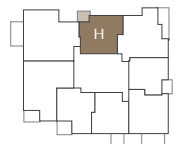
AT LIONS GATE

# PLAN H

1 Bedroom + Den | Living 619 sqft\* | Balcony 55 sqft



TOWER 1 & 2



LEVELS 3-11

\*Living space refers to architectural area. The surveyed size of this plan is 609 sqft.

The developer makes no representations or warranties and reserves the right to make changes and modifications to the information contained herein. Any information contained herein including, without limitation, maps, views, photography, development model and digital renderings of architecture and interiors are for illustration purposes only and may not be relied upon. Floorplans, layouts and finishes are subject to change. Park West at Lions Gate is currently not an offering for sale. Such offering may only be made with a disclosure statement. E.&O.E.

PARK  
WEST

AT LIONS GATE

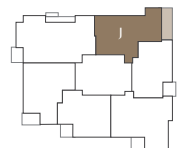
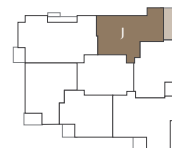
# PLAN J

2 Bedroom | Living 975 sqft\* | Balcony 141 sqft



TOWER 1

TOWER 2



LEVELS 14-16, 18-20

LEVELS 14, 16

\*Living space refers to architectural area. The surveyed size of this plan is 954 sqft.

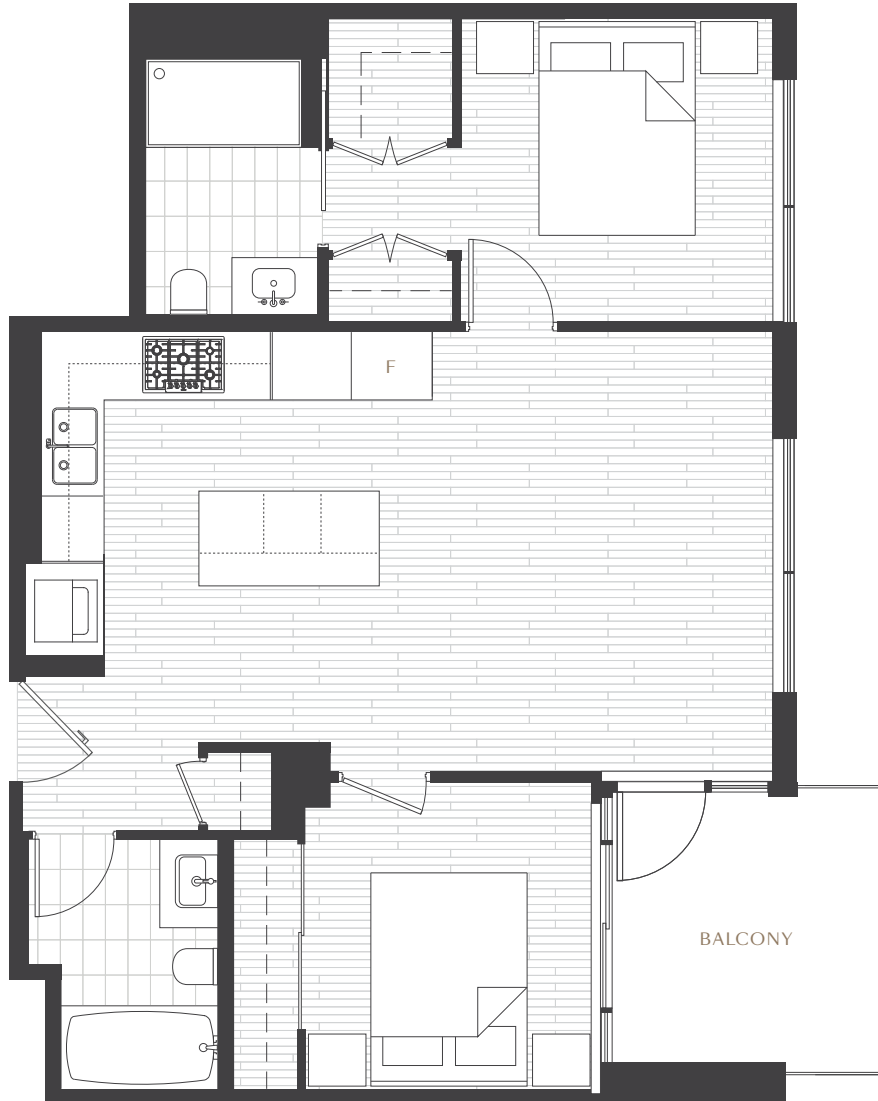
The developer makes no representations or warranties and reserves the right to make changes and modifications to the information contained herein. Any information contained herein including, without limitation, maps, views, photography, development model and digital renderings of architecture and interiors are for illustration purposes only and may not be relied upon. Floorplans, layouts and finishes are subject to change. Park West at Lions Gate is currently not an offering for sale. Such offering may only be made with a disclosure statement. E.&O.E.

PARK  
WEST

AT LIONS GATE

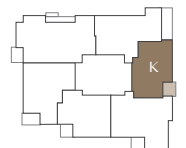
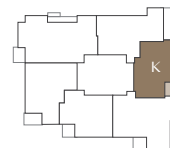
# PLAN K

2 Bedroom | Living 778 sqft\* | Balcony 72 sqft



TOWER 1

TOWER 2



LEVELS 12, 14-21

LEVELS 12, 14-17

\*Living space refers to architectural area. The surveyed size of this plan is 759 sqft.

The developer makes no representations or warranties and reserves the right to make changes and modifications to the information contained herein. Any information contained herein including, without limitation, maps, views, photography, development model and digital renderings of architecture and interiors are for illustration purposes only and may not be relied upon. Floorplans, layouts and finishes are subject to change. Park West at Lions Gate is currently not an offering for sale. Such offering may only be made with a disclosure statement. E.&O.E.

PARK  
WEST

AT LIONS GATE

# PLAN L

2 Bedroom + Den | Living 1057 sqft\* | Balcony 64 sqft



TOWER 1

TOWER 2



LEVELS 14-16, 18-20

LEVELS 14-16

\*Living space refers to architectural area. The surveyed size of this plan is 1065 sqft.

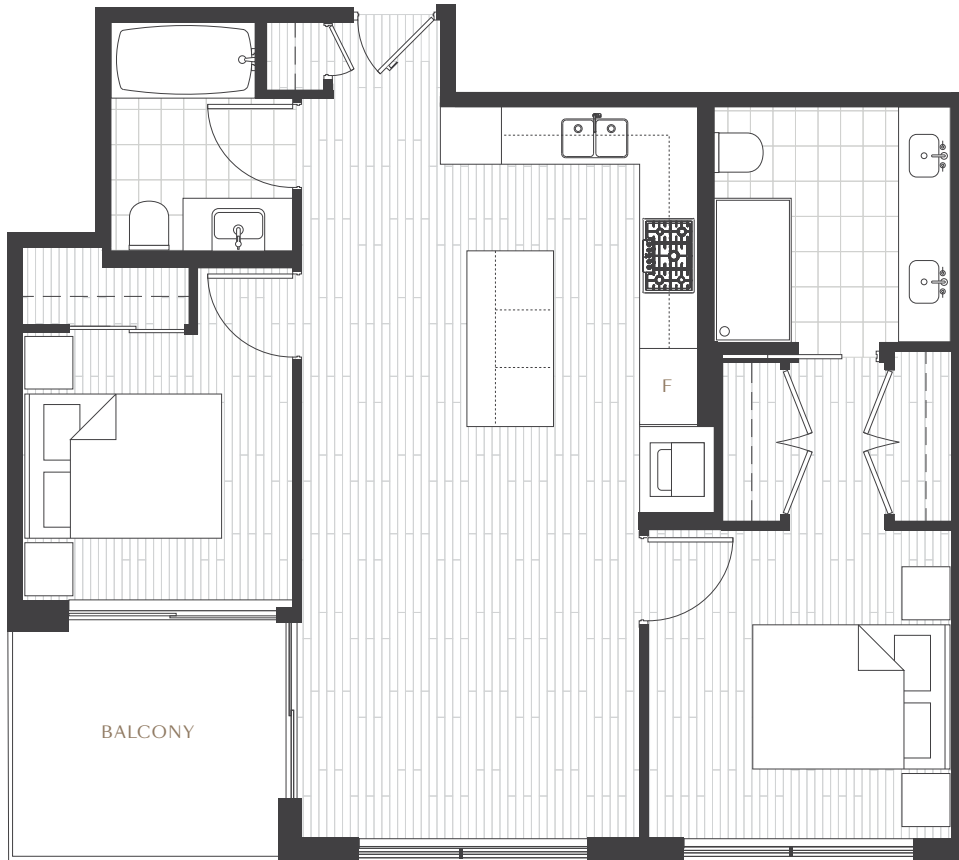
The developer makes no representations or warranties and reserves the right to make changes and modifications to the information contained herein. Any information contained herein including, without limitation, maps, views, photography, development model and digital renderings of architecture and interiors are for illustration purposes only and may not be relied upon. Floorplans, layouts and finishes are subject to change. Park West at Lions Gate is currently not an offering for sale. Such offering may only be made with a disclosure statement. E.&O.E.

PARK  
WEST

AT LIONS GATE

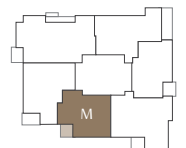
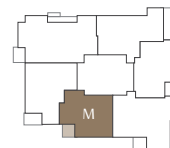
# PLAN M

2 Bedroom | Living 823 sqft\* | Balcony 78 sqft



TOWER 1

TOWER 2



LEVELS 13-20

LEVELS 13-16

\*Living space refers to architectural area. The surveyed size of this plan is 808 sqft.

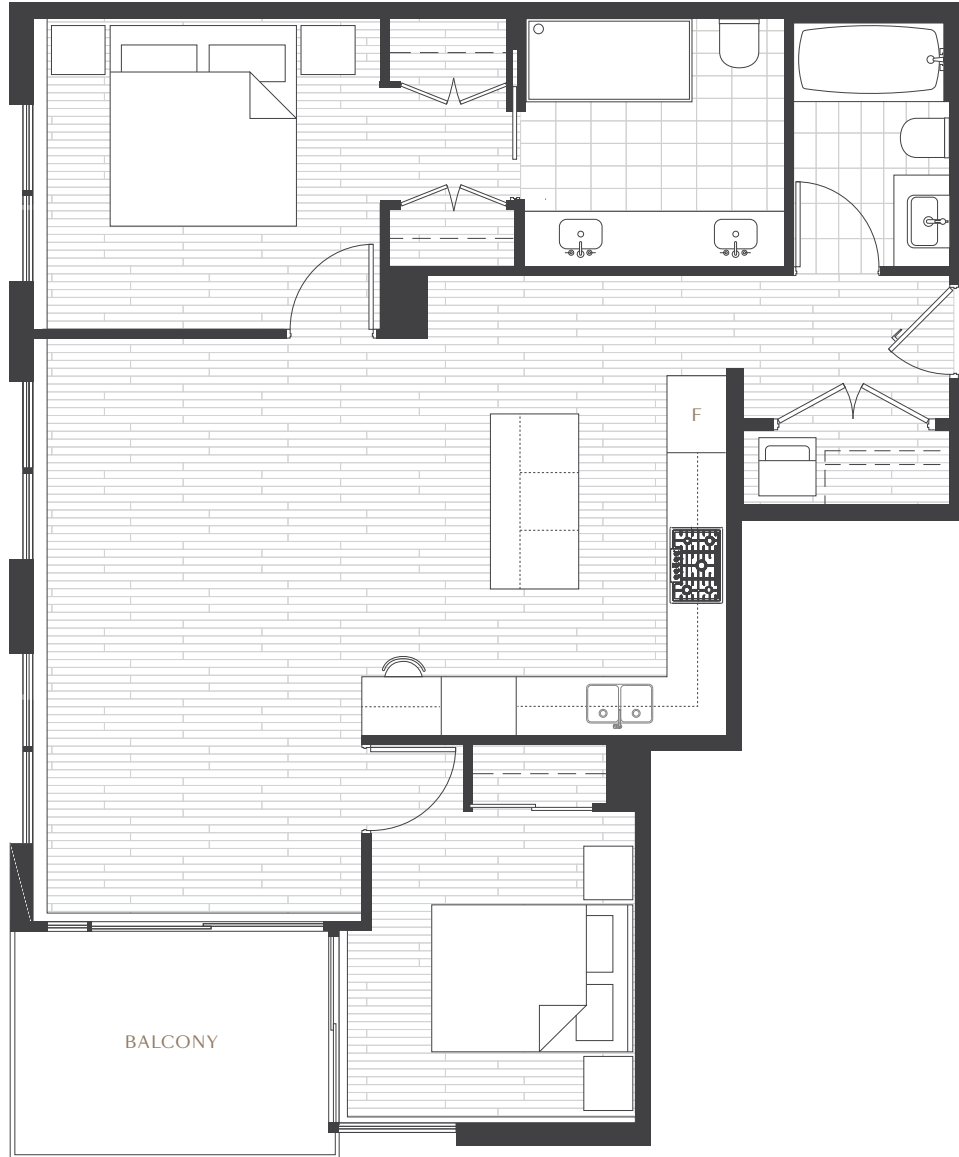
The developer makes no representations or warranties and reserves the right to make changes and modifications to the information contained herein. Any information contained herein including, without limitation, maps, views, photography, development model and digital renderings of architecture and interiors are for illustration purposes only and may not be relied upon. Floorplans, layouts and finishes are subject to change. Park West at Lions Gate is currently not an offering for sale. Such offering may only be made with a disclosure statement. E.&O.E.

PARK  
WEST

AT LIONS GATE

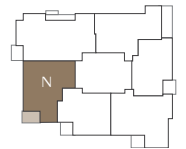
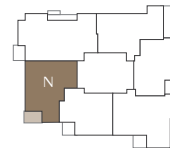
# PLAN N

2 Bedroom | Living 945 sqft\* | Balcony 83 sqft



TOWER 1

TOWER 2



LEVELS 12, 14-20

LEVELS 12, 14-16

\*Living space refers to architectural area. The surveyed size of this plan is 925 sqft.

The developer makes no representations or warranties and reserves the right to make changes and modifications to the information contained herein. Any information contained herein including, without limitation, maps, views, photography, development model and digital renderings of architecture and interiors are for illustration purposes only and may not be relied upon. Floorplans, layouts and finishes are subject to change. Park West at Lions Gate is currently not an offering for sale. Such offering may only be made with a disclosure statement. E.&O.E.

PARK WEST

AT LIONS GATE

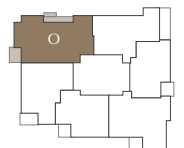
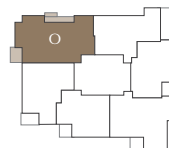
# PLAN O

3 Bedroom + Den | Living 1256 sqft\* | Balcony 137 sqft



TOWER 1

TOWER 2



LEVELS 13-20

LEVELS 13-16

\*Living space refers to architectural area. The surveyed size of this plan is 1235 sqft.

The developer makes no representations or warranties and reserves the right to make changes and modifications to the information contained herein. Any information contained herein including, without limitation, maps, views, photography, development model and digital renderings of architecture and interiors are for illustration purposes only and may not be relied upon. Floorplans, layouts and finishes are subject to change. Park West at Lions Gate is currently not an offering for sale. Such offering may only be made with a disclosure statement. E.&O.E.

