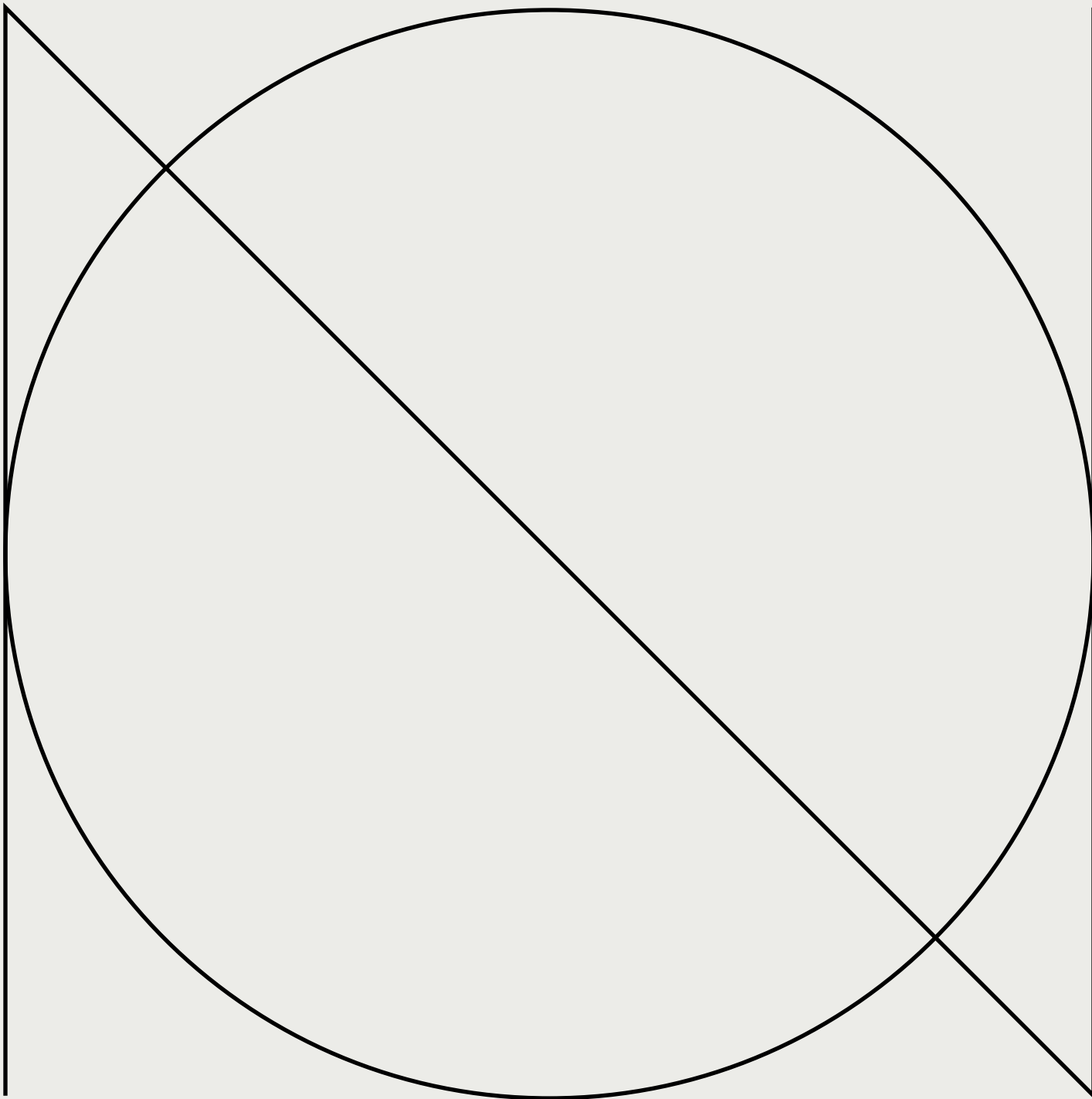


NUVO

CENTRAL PARK



Desire

good design.

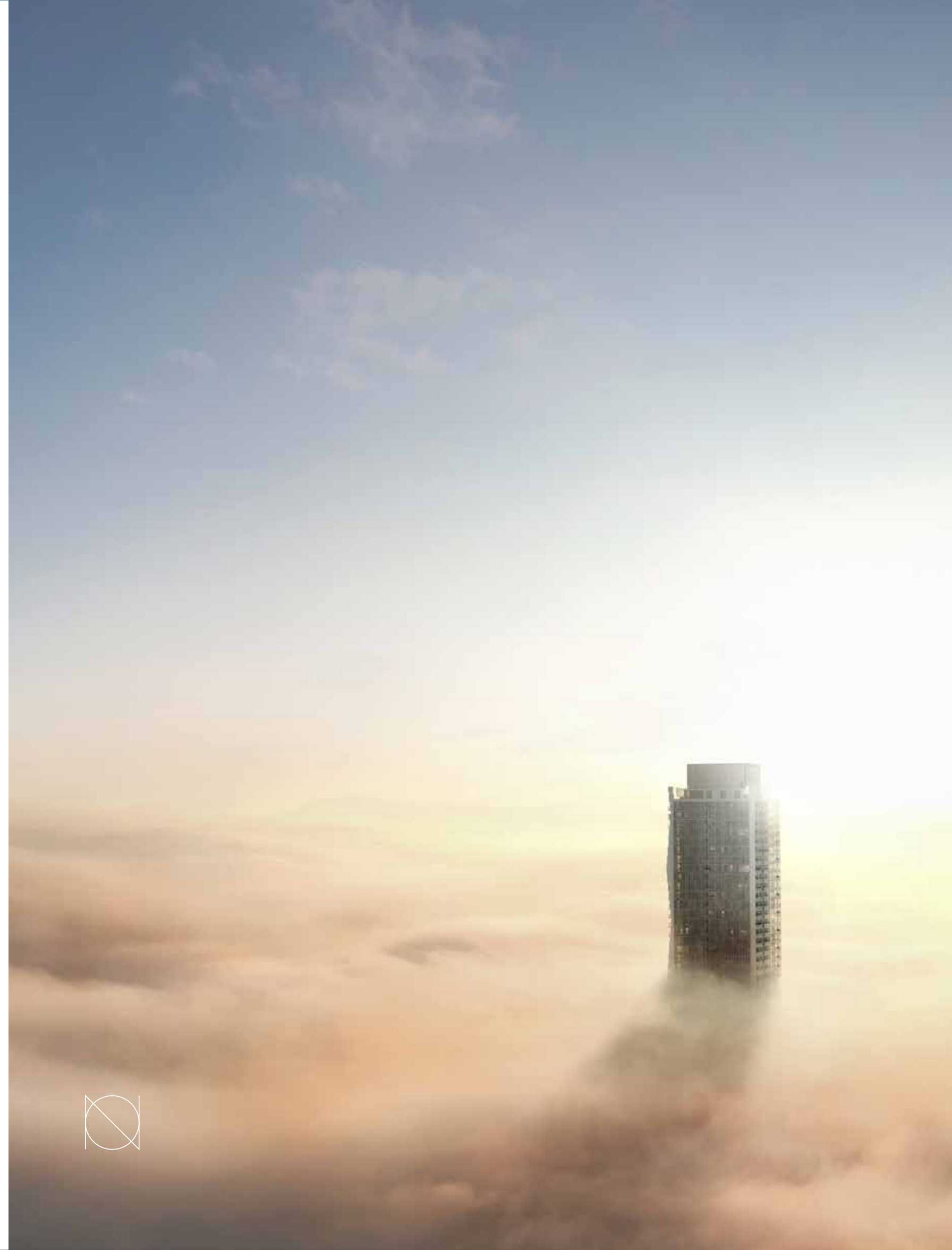
Desire striking views. Desire to stand apart.

Desire to evolve. Grow. Shine.

Desire the details. Desire quality. Desire craftsmanship.

Desire an inviting, vibrant experience.

Desire NUVO



01

Plan D

TWO BED

02

Plan B

ONE BED

03

Plan A

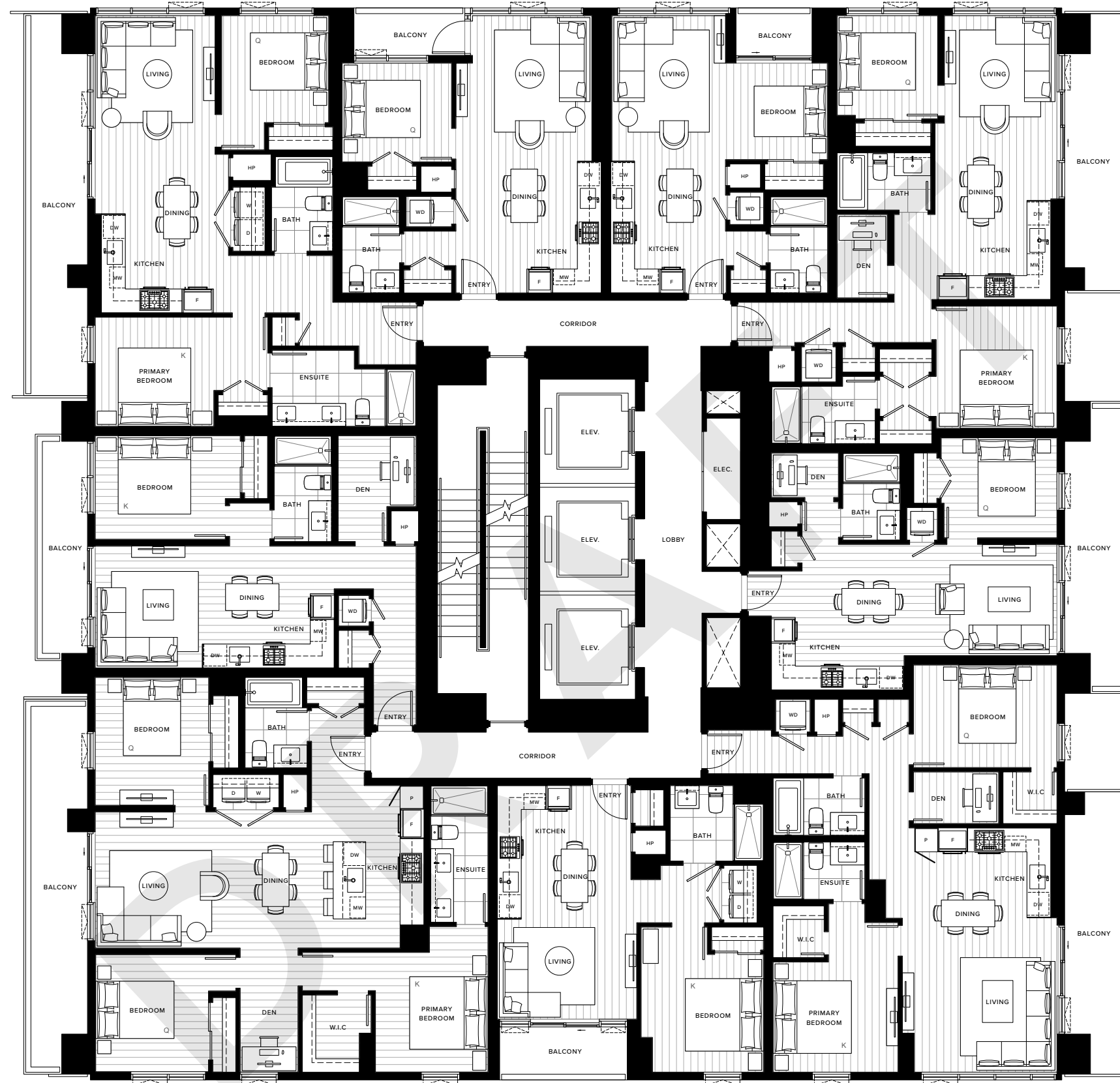
STUDIO

04

Plan E

TWO BED + DEN

Levels 5 – 43



09

Plan C1

ONE BED + DEN

05

Plan C

ONE BED + DEN

08

Plan F

THREE BED + DEN

07

Plan B1

ONE BED

06

Plan E1

TWO BED + DEN

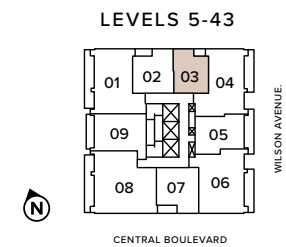
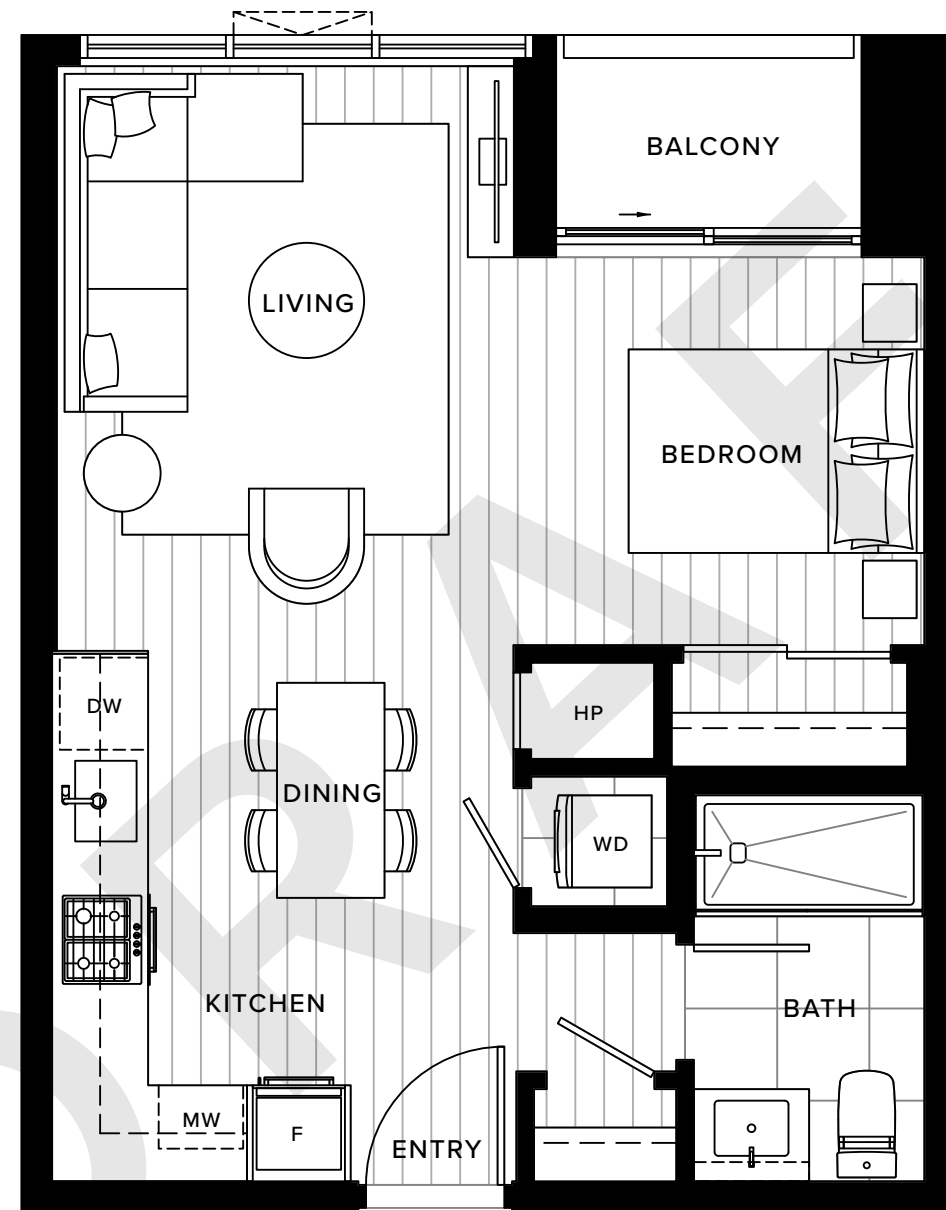


NUVO

Plan A

STUDIO | ONE BATHROOM

INTERIOR: 468 SF
 EXTERIOR: 24 SF
TOTAL: 492 SF

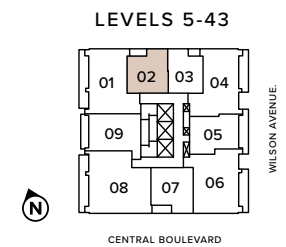
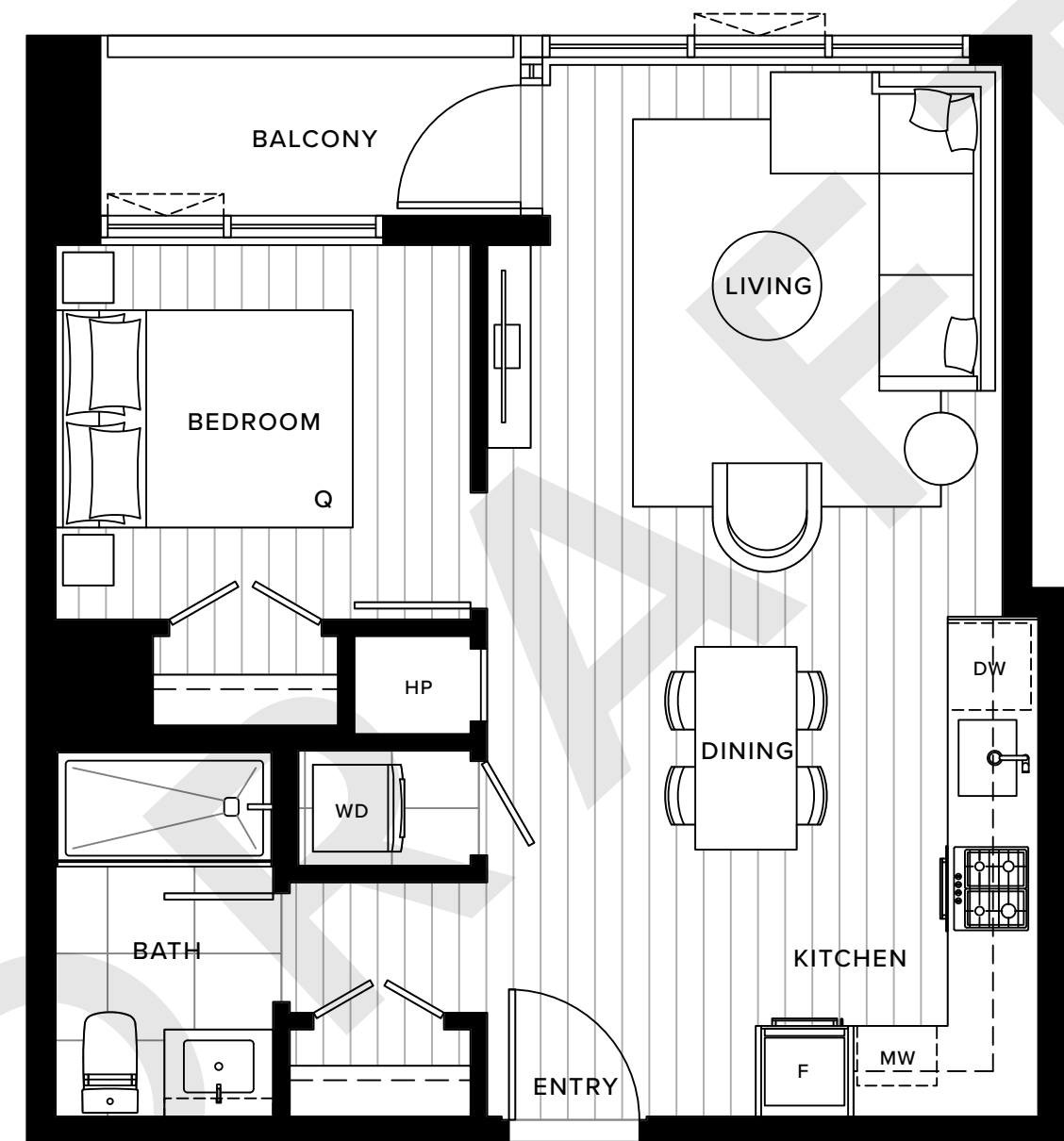


NUVO

Plan B

ONE BEDROOM | ONE BATHROOM

INTERIOR: 544 SF
 EXTERIOR: 35 SF
TOTAL: 579 SF

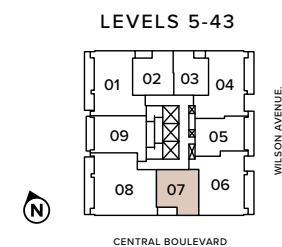


NUVO

Plan B1

ONE BEDROOM | ONE BATHROOM

INTERIOR: 575 SF
 EXTERIOR: 46 SF
TOTAL: 621 SF

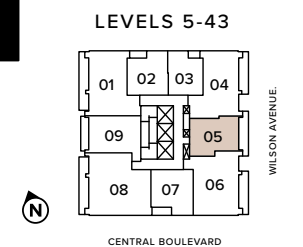
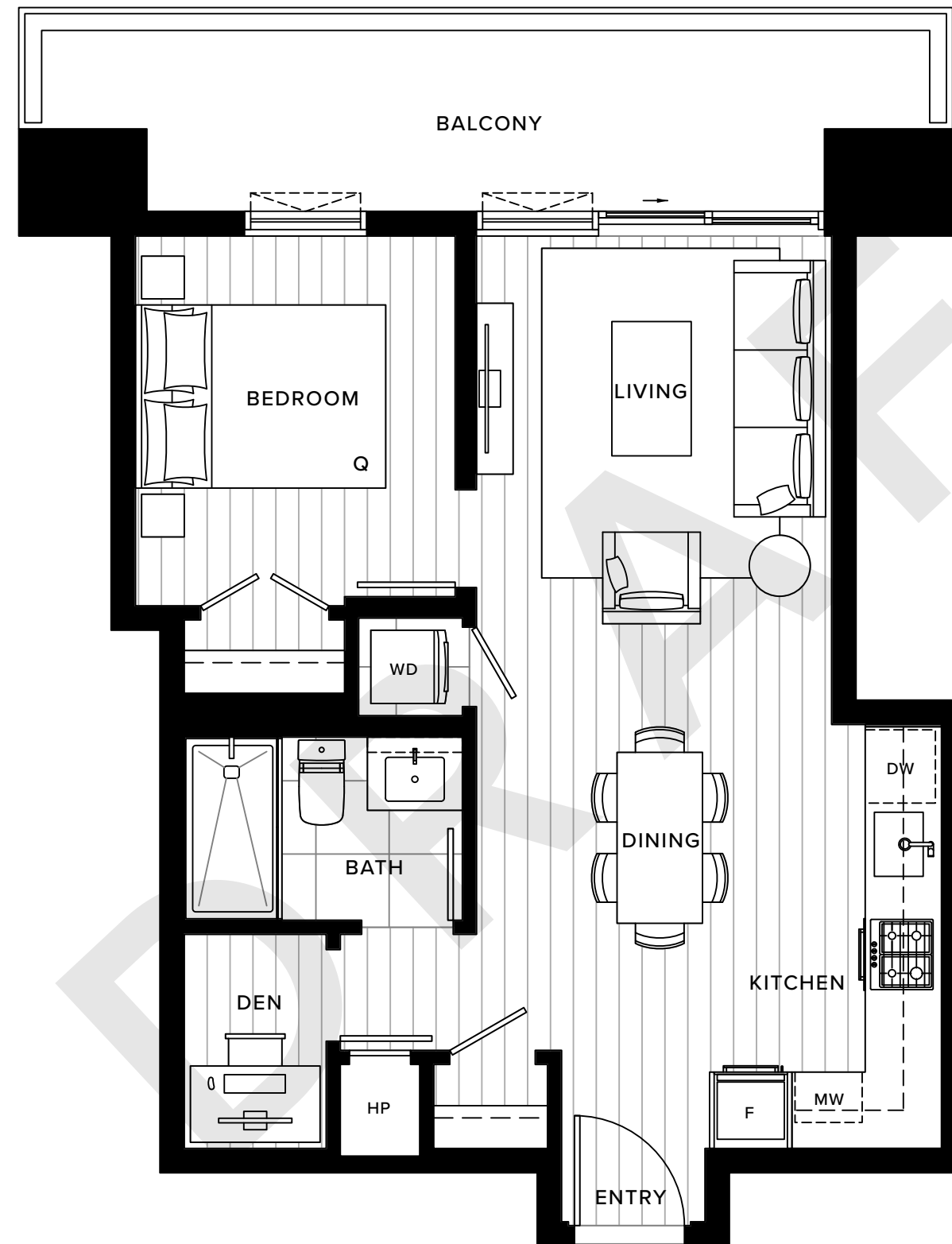


NUVO

Plan C

ONE BEDROOM + DEN | ONE BATHROOM

INTERIOR: 548 SF
 EXTERIOR: 116 SF
TOTAL: 664 SF

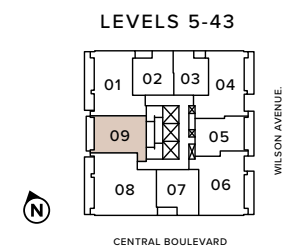


NUVO

Plan C1

ONE BEDROOM + DEN | ONE BATHROOM

INTERIOR: 642 SF
 EXTERIOR: 80 SF
TOTAL: 722 SF

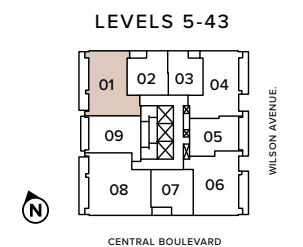
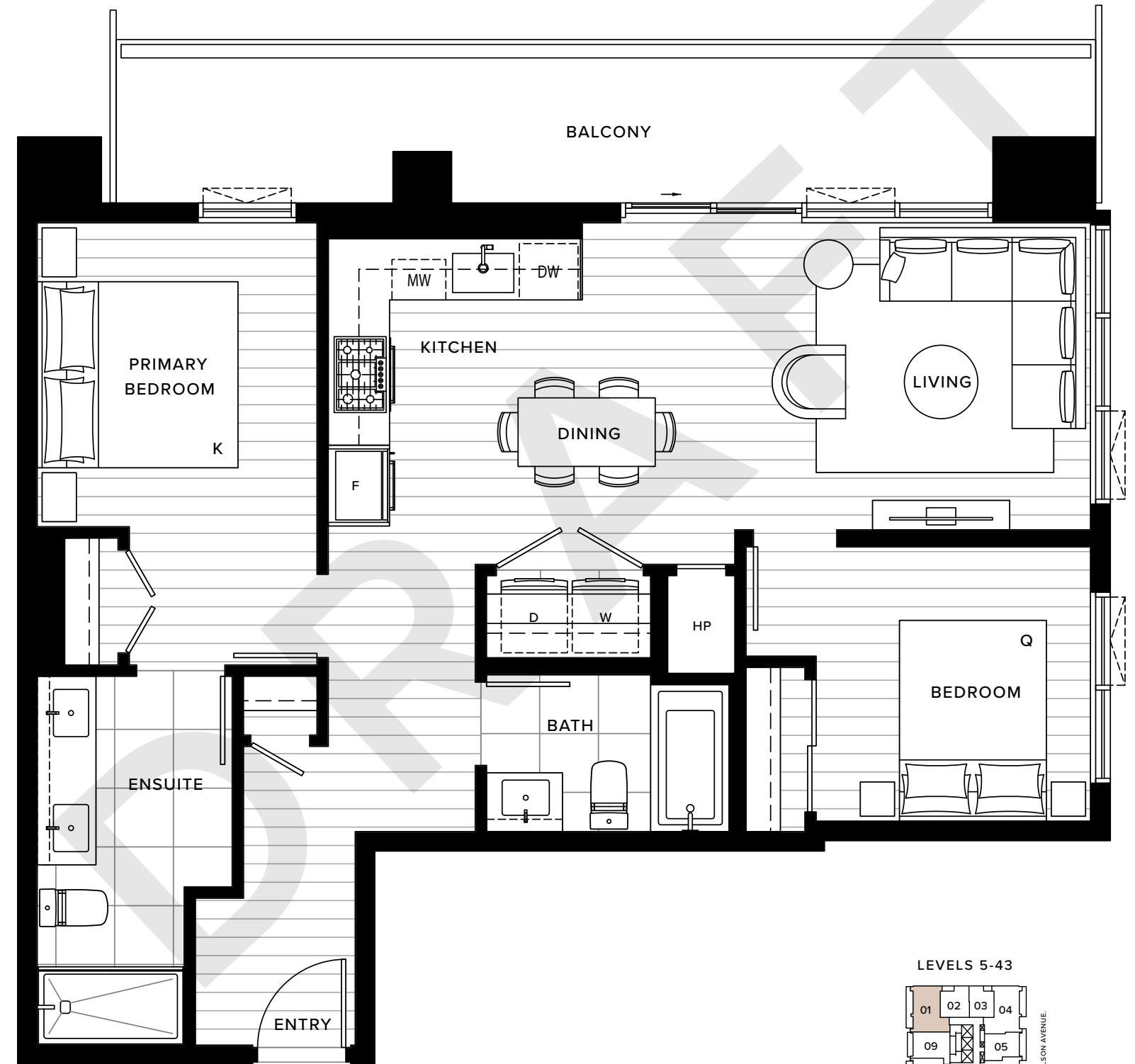


NUVO

Plan D

TWO BEDROOM | TWO BATHROOM

INTERIOR: 886 SF
 EXTERIOR: 164 SF
TOTAL: 1,050 SF

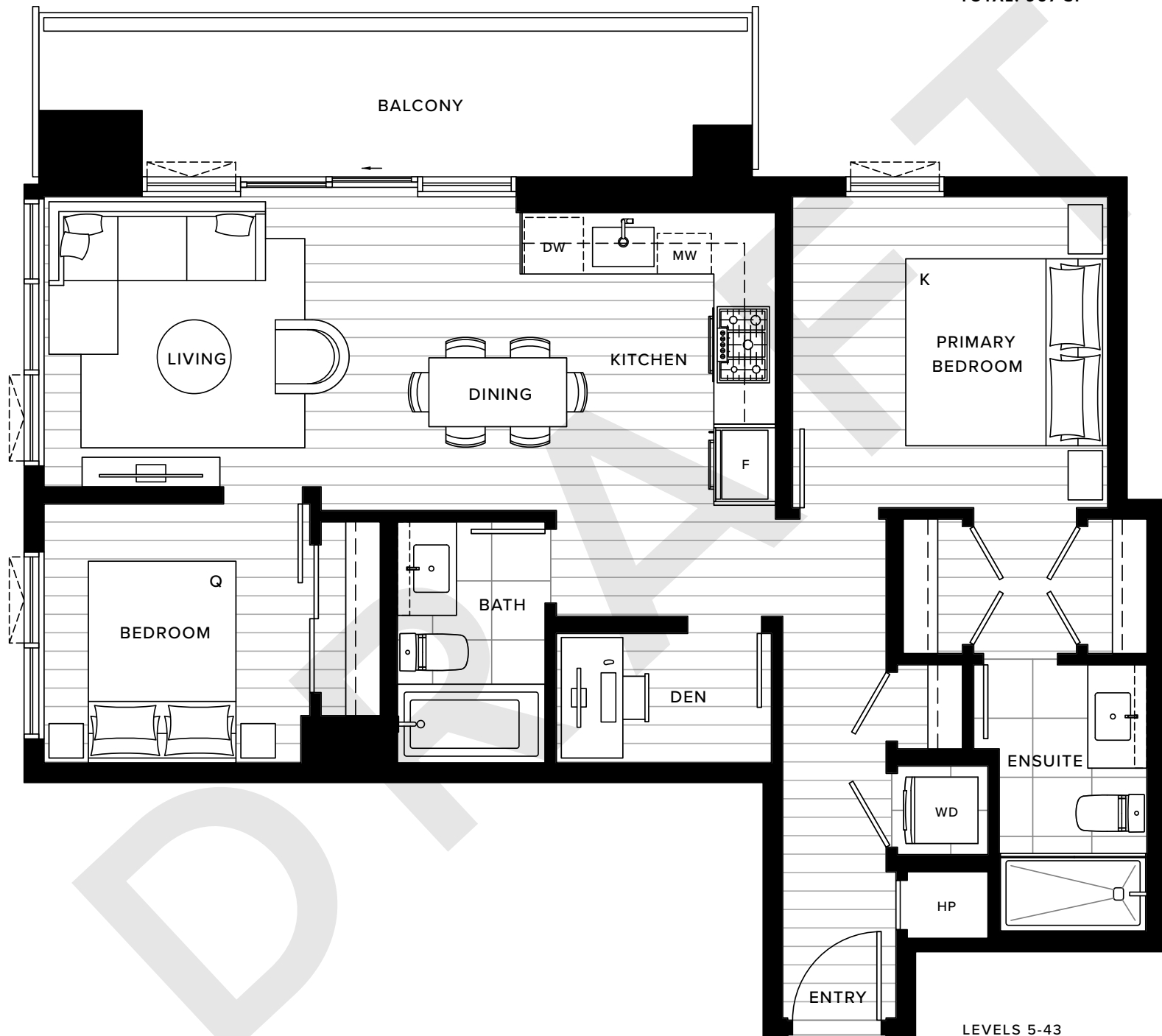


NUVO

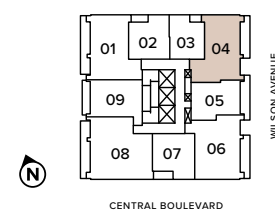
Plan E

TWO BEDROOM + DEN | TWO BATHROOM

INTERIOR: 851 SF
 EXTERIOR: 116 SF
TOTAL: 967 SF



LEVELS 5-43

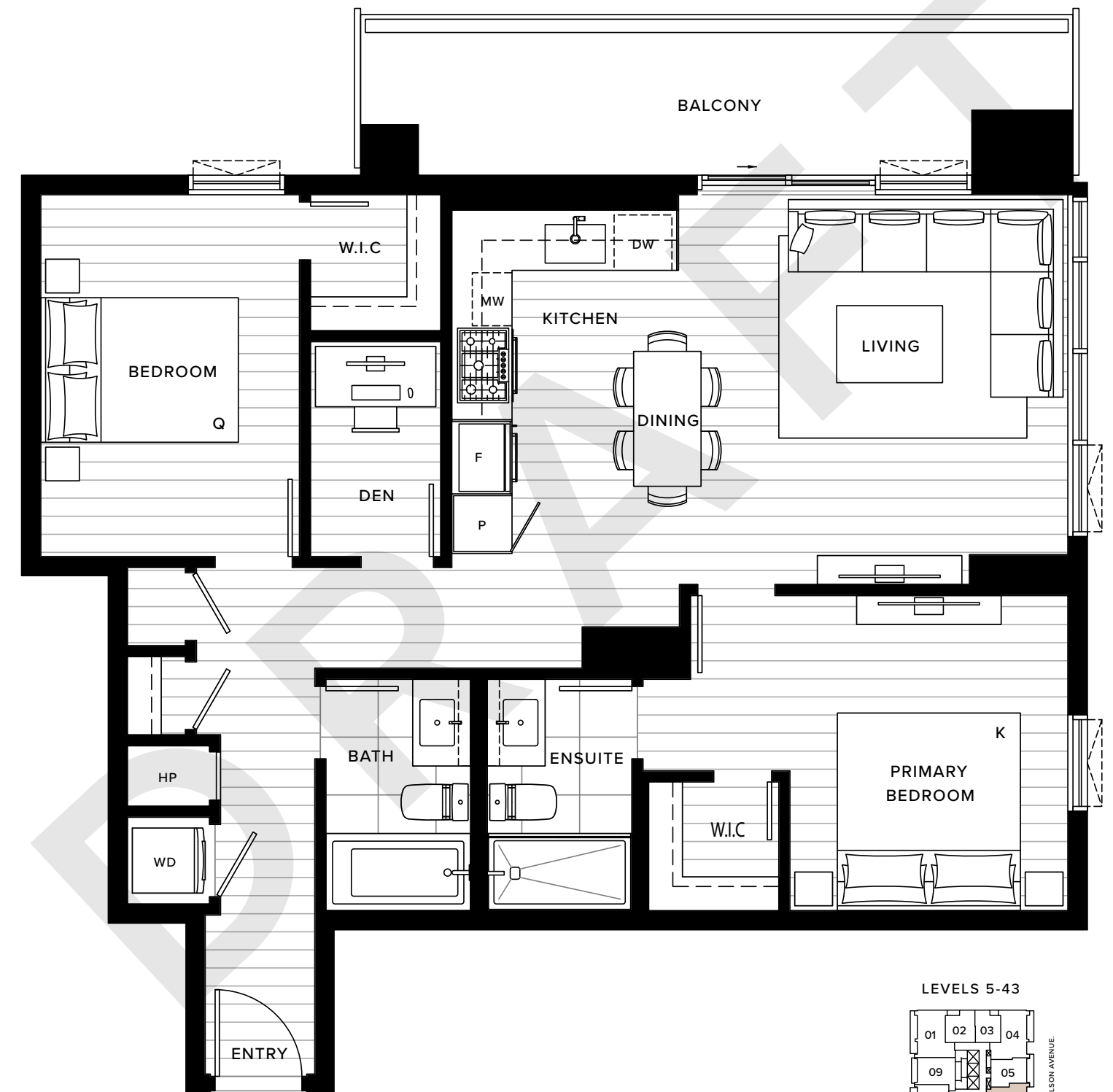


NUVO

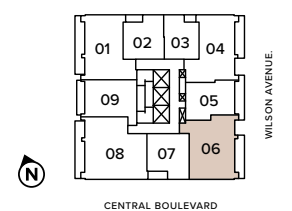
Plan E1

TWO BEDROOM + DEN | TWO BATHROOM

INTERIOR: 933 SF
 EXTERIOR: 118 SF
TOTAL: 1,051 SF



LEVELS 5-43



NUVO

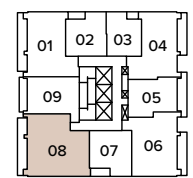
Plan F

THREE BEDROOM + DEN | TWO BATHROOM

INTERIOR: 1,152 SF
 EXTERIOR: 159 SF
TOTAL: 1,311 SF



LEVELS 5-43



NUVO

FEATURES

BEAUTY IN THE DETAILS

- Statuesque architectural design by GBL Architects creates elegant park-side residences within Metrotown
- Interiors crafted with beauty in mind by award-winning Ste. Marie Studio
- Inspiring public art by internationally acclaimed artist Khan Lee
- 11,550 sq. ft. of private indoor and outdoor amenities at The Club — NUVO's central oasis across 2 floors

EXPERIENTIAL INTERIORS

- Two elegant colour palettes inspired by the setting: City and Park
- Wide-plank laminate wood flooring throughout living areas and bedrooms to welcome you home
- Comfortable air quality and temperature control with energy-efficient heating and cooling
- Spacious 9' high ceilings in living areas (most homes)
- Roller shade blinds on all exterior windows provide added privacy and light control
- Ultra-quiet, high-efficiency stackable front-load washer and dryer

THE CHEF'S DREAM

- Beautiful two-tone laminate cabinetry with wood-grain laminate lower cabinets and ample storage solutions for the chef with everything
- Conscientious and smart designs, including under-cabinet lighting, soft-close hardware and open shelving display
- Luxurious quartz stone slab countertops and backsplash crafted for a minimalistic design and easy cleaning
- Single-basin under-mount stainless steel sink with Baril polished chrome pull-down faucet
- Integrated premium Bosch appliance package,* including:
 - Refrigerator with bottom-mount freezer
 - Gas cooktop
 - Electric oven
 - Dishwasher
- AEG under-cabinet slim hood fan
- Panasonic microwave with trim kit

*Studio & 1 bedroom suites receive 24" appliance package

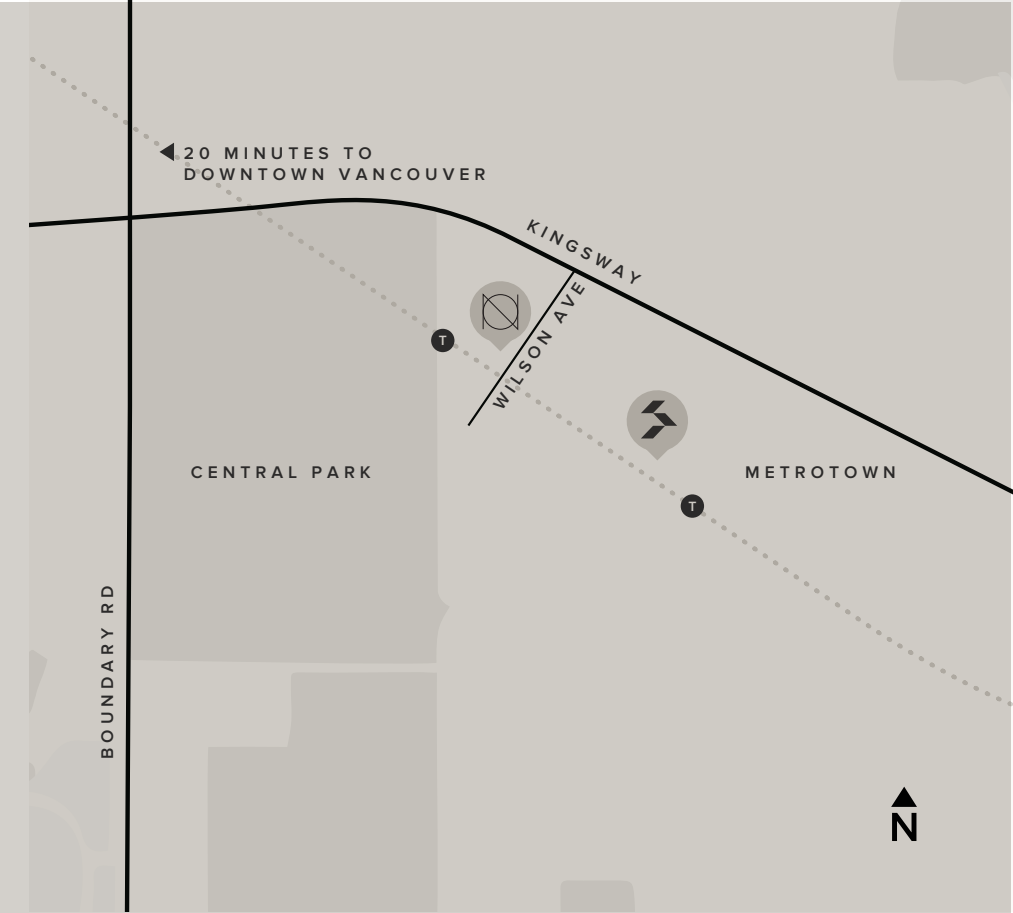
*2 bedroom suites and up receive 30" appliance package (24" dishwasher)

SPA @ HOME

- Custom medicine cabinetry with mirror, integrated shelving and built-in LED lighting
- Courteous designs, including soft-close drawers, a Laufen under-mount sink and a Baril polished chrome faucet
- Quartz countertops that create luxury and elegance
- Opulent porcelain wall tile and floors
- Sleek glass-enclosed walk-in shower with rainfall shower head and hand-held shower wand
- Spa-like deep soaker tub with Baril polished chrome plumbing fixtures for a relaxing end to the day (in select homes)
- Modern Laufen dual-flush toilet with soft-close seat

PEACE OF MIND

- 2-5-10 New Home Warranty
- Encrypted security key fob building access system for an even safer home
- Reassuring restricted floor access via three elevators ready to take you anywhere
- Secure, well-lit underground parkade complete with EV capable parking stalls
- Secured parcel and cold-storage facility
- On-site concierge providing personal care and attention to every detail
- Expertly developed and built by Anthem
- Industry-leading Homeowner Care provided by Anthem



BORDERING TWO WORLD – CLASS CITIES

Boundary Road partitions Vancouver from Burnaby, and offers easy access to Highway 1 northbound. Kingsway's prominence runs through Burnaby, infusing the city with international culture and cuisine.

THE CITY

METROPOLIS AT METROTOWN:

- LARGEST MALL IN BC
- 400+ SHOPS AND SERVICES
- MOVIE THEATRE

58 PUBLIC ART INSTALLATIONS

60,000 SF EVENTS CENTRE (COMING SOON)

36,000 SF ART GALLERY (COMING SOON)

20-MINUTE DRIVE TO DOWNTOWN VANCOUVER

25-MINUTE DRIVE TO YVR AIRPORT

2-MINUTE WALK TO PATTERSON STATION

FLOURISHING IN METROTOWN

Watch from your balcony with anticipation as the horizon transforms into a city blooming with culture. Step through Central Boulevard, where you become immersed in the Beresford Art Walk as you pass by one grand masterpiece after another.

In a moment, an outdoor shopping and dining district will emerge, to complement the style and sophistication that already lives at Metropolis at Metrotown. The atmosphere carries its way into an arising culture, entertainment and event space, where life, character and connection intermix. When you need a sweet escape, find yourself en route someplace new via the expanding SkyTrain. Metrotown will be waiting for your swift return.



THE PARK

84 HECTARES
18-HOLE PITCH & PUTT
VOLLEYBALL COURT
12 TENNIS COURTS
10 KILOMETRES OF TRAILS
LAWN BOWLING
16 HORSESHOE PITCHES
50-METRE OUTDOOR POOL
200-PERSON PICNIC AREAS
SWANGARD STADIUM

A PIECE OF THE PARK

Separated only by a single street, Central Park and NUVO belong together. Let the calming air wash over you like an ocean wave, and dive into the great depths of the old-growth rainforest, forever changing with the seasons. Embrace the stillness in the grass and tune into the songs of the birds.





TEAM

ANTHEM IN METROTOWN

The geographical centre of Metro Vancouver, and the third largest city in BC, Burnaby is a well-connected, popular place to live, work, study and play. Burnaby has evolved from a rural suburb to a prolific urban centre that is socially, economically and culturally diverse. Integrated with high technology research, business parks, shopping centres and highly recognized post secondary institutions, Burnaby attracts people locally and globally through its commitment to growing stronger, more livable and sustainable places for residents to live, emphasized by strategic planning and community development.

Mirroring Burnaby's journey of growth, Anthem's dedication to the city's development has spanned over 20 years and is a foundational source of pride. Anthem's investment, development and management portfolio in Burnaby includes almost 900,000 square feet of commercial real estate, and over 3,900 homes that are either complete, under construction or in development.

With decades of real estate development experience, every Anthem community is an evolution of the last, anchored by a steadfast vision to create great space and vibrant, synergistic communities for all its intended users: homeowners, tenants, retailers and the broader community. We are driven by a tireless effort to deliver on our

promises and build quality homes designed to maximize livability. Like the city of Burnaby, we are constantly improving and innovating the way things are done.

Building on the legacy and success of Station Square, Anthem will continue to pursue high density community developments in Burnaby's transit-oriented hubs, like Metrotown. Whether residential or commercial, placing a deliberate focus on developing communities unified by landscaping, connecting pathways, bike lanes, public art and architecture to add value to the experience of every user group for the entire life cycle of the development.

To further reinforce the vision of our communities and the company mission, Anthem looks at each municipality as a partner, supporting initiatives that give back to the city's residents. In alignment with Anthem's Giving strategy, we seek to strengthen the communities we build in and assist those in need to reach their full potential. Anthem proudly honours Burnaby's dynamic evolution, community and legacy.

We are Growing Places.



Founded in 1991, Anthem is a team of 400 people driven by creativity, passion and direct communication. Anthem and Anthem United have invested in, developed or managed - alone or in partnership - more than 270 residential, commercial and retail projects across western North America.

Our growing residential portfolio includes 15,000 homes that are complete, in design or under construction, from master planned mixed use residential and multifamily, to townhome and single family communities.

We own, co-own, manage or have previously owned over 8 million square feet of retail, industrial, residential rental and office space across western North America. We have developed more than 60 communities across 6,100 acres of land in Alberta, British Columbia and California.

Anthem is a real estate development, investment and management company that strives, solves and evolves to create better spaces and stronger communities.

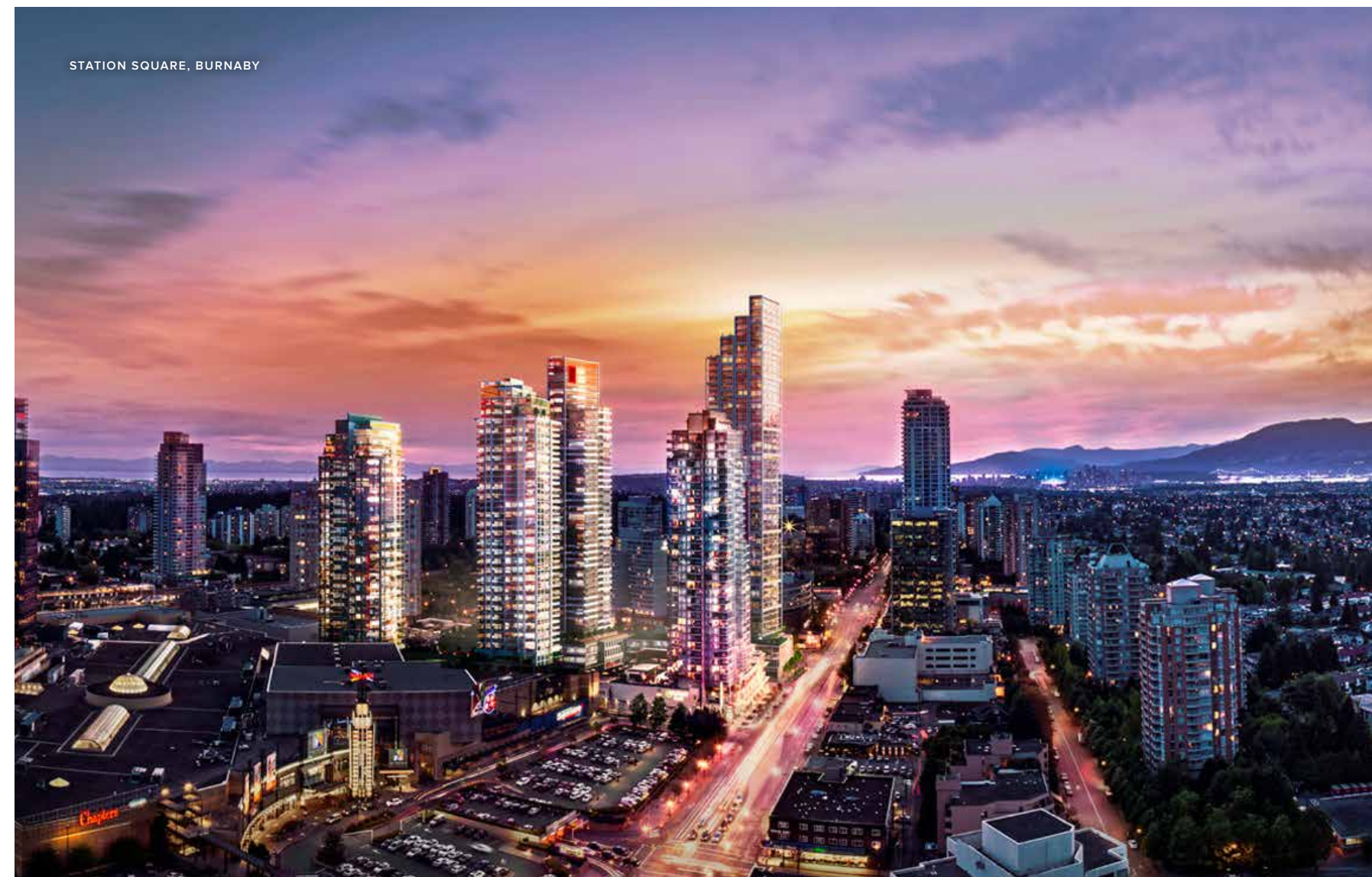
We are Growing Places.



THE STANDARD, BURNABY



WYNWOOD GREEN, COQUITLAM



STATION SQUARE, BURNABY



Love,
NUVO

Anthem 