



MONUMENT

KITSILANO



MONUMENT LEVELS 2-4

B6A + B6
Interior: 1345 Sq Ft
Exterior: 70-285 Sq Ft

B4
Interior: 1200 Sq Ft
Exterior: 135-180 Sq Ft

B5
Interior: 1235 Sq Ft
Exterior: 150-195 Sq Ft



B2 + B1
Interior: 1140-1155 Sq Ft
Exterior: 55 Sq Ft

B
Interior: 1170 Sq Ft
Exterior: 55 Sq Ft

B3
Interior: 1195 Sq Ft
Exterior: 65 Sq Ft

LEVELS 2 + 3

B7
Interior: 1240 Sq Ft
Exterior: 205 Sq Ft

B8
Interior: 980 Sq Ft
Exterior: 270 Sq Ft

C
Interior: 1510 Sq Ft
Exterior: 305 Sq Ft



B1
Interior: 1155 Sq Ft
Exterior: 55 Sq Ft

B
Interior: 1170 Sq Ft
Exterior: 55 Sq Ft

C1
Interior: 1400 Sq Ft
Exterior: 125 Sq Ft

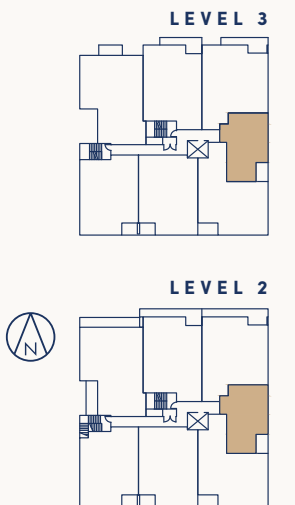
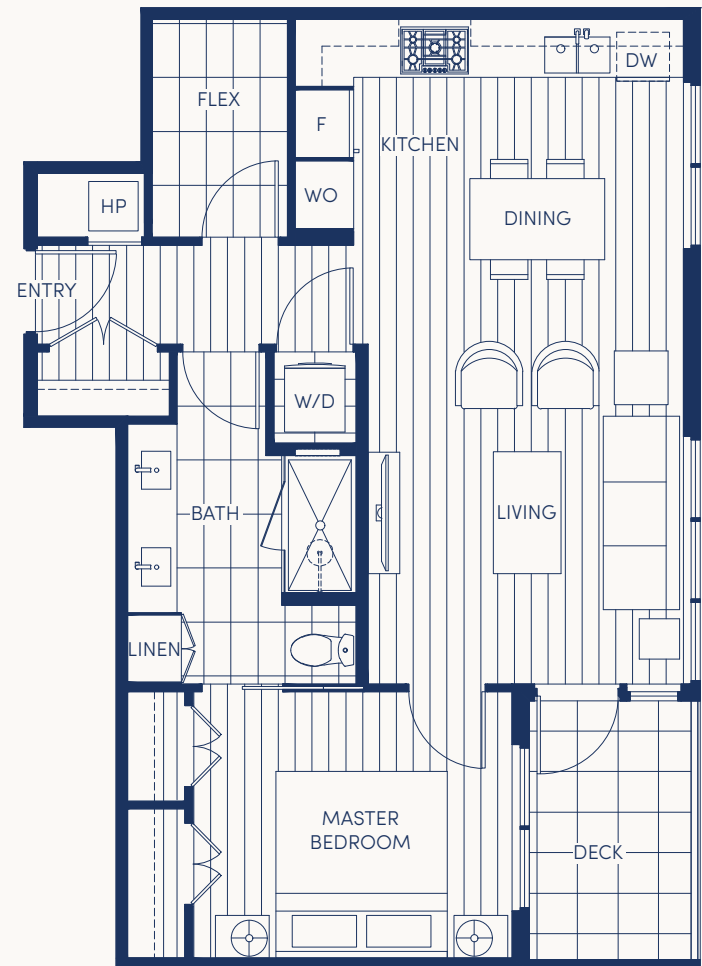
LEVEL 4



Most plans, dimensions, sizes, specifications, layouts and materials are approximate only and subject to change without notice. Purchasers are advised to review the Disclosure Statement and Offer of Purchase and Sale for more information E.&O.E.

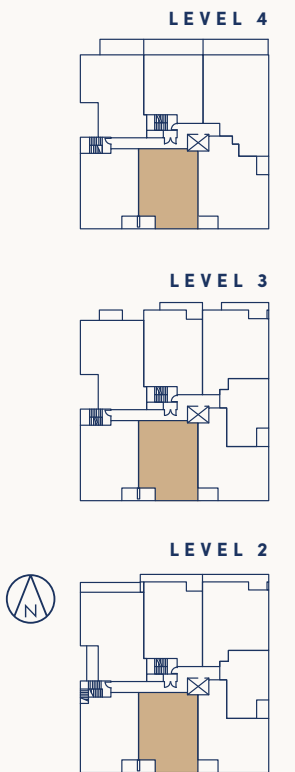
UNIT 206+306

1 Bedroom + 1 Bath + Flex
Interior: 720 Sq Ft / Exterior: 60 Sq Ft



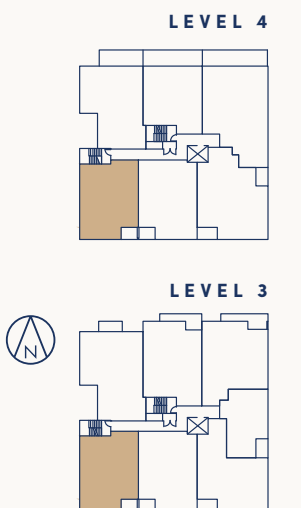
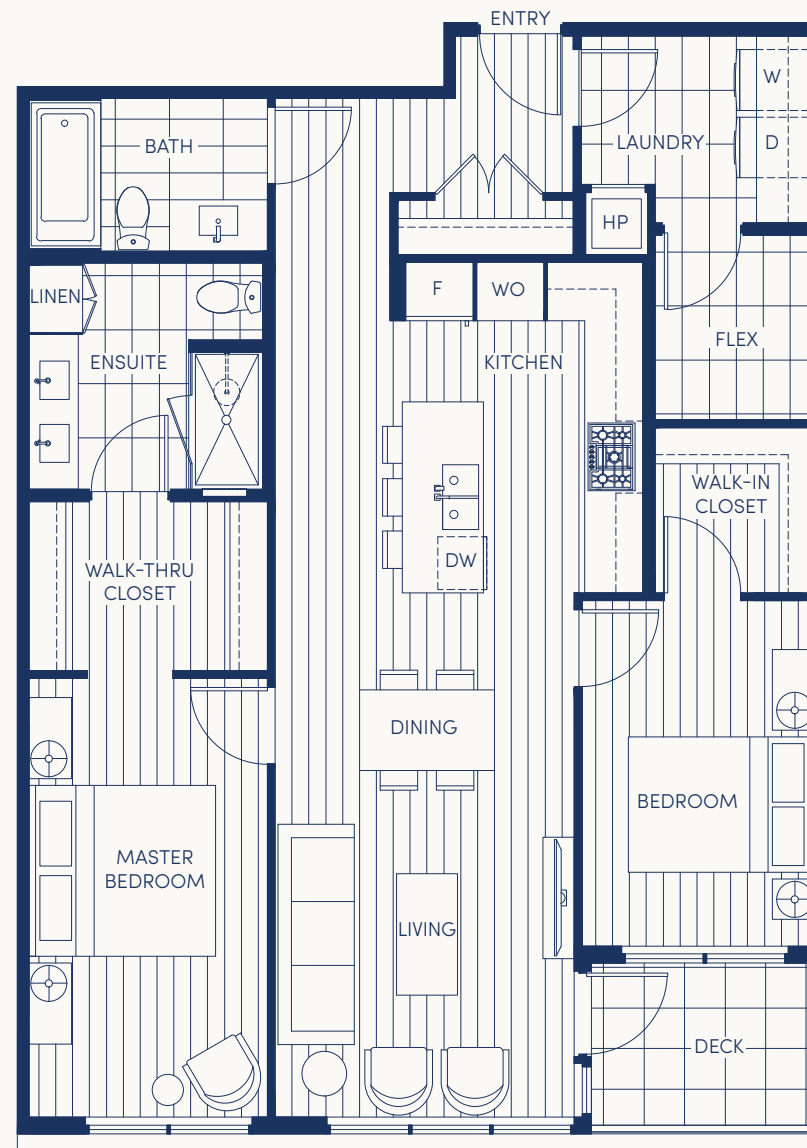
UNIT 201+301+PH1

2 Bedroom + 2 Bath + Flex
Interior: 1170 Sq Ft / Exterior: 55 Sq Ft



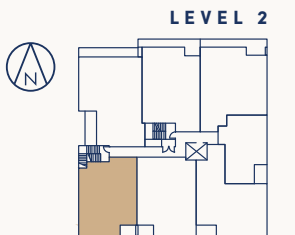
UNIT 302+PH2

2 Bedroom + 2 Bath + Flex
Interior: 1155 Sq Ft / Exterior: 55 Sq Ft



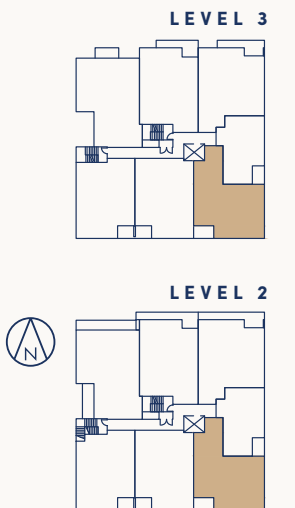
UNIT 202

2 Bedroom + 2 Bath + Flex
Interior: 1140 Sq Ft / Exterior: 55 Sq Ft



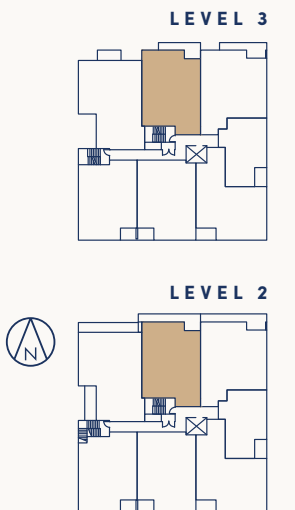
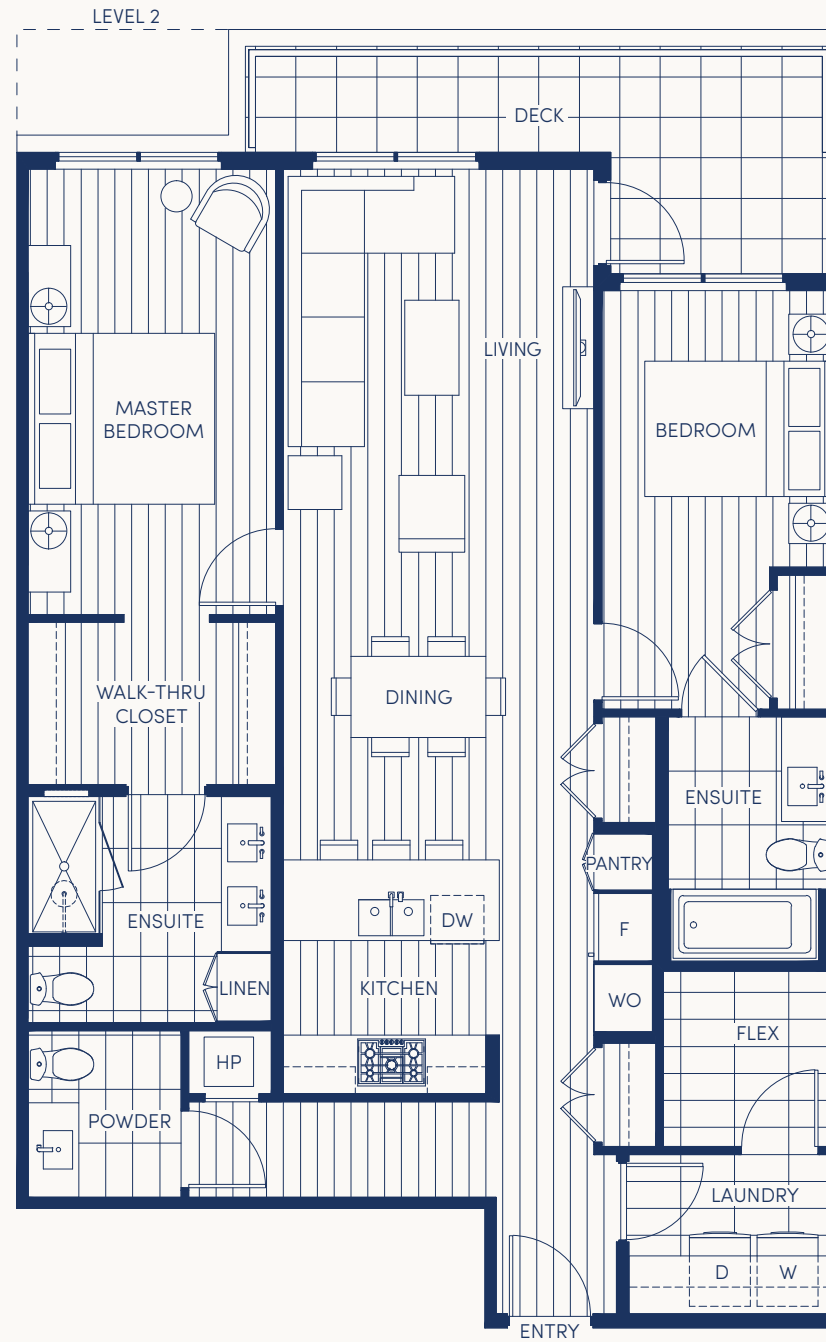
UNIT 207+307

2 Bedroom + 2 Bath + Flex
Interior: 1195 Sq Ft / Exterior: 65 Sq Ft



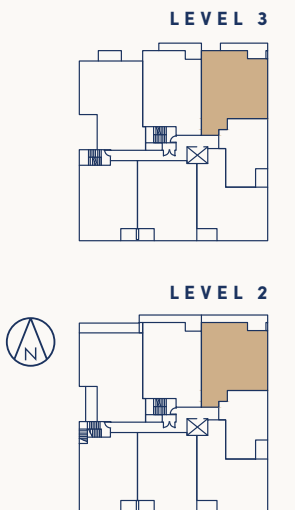
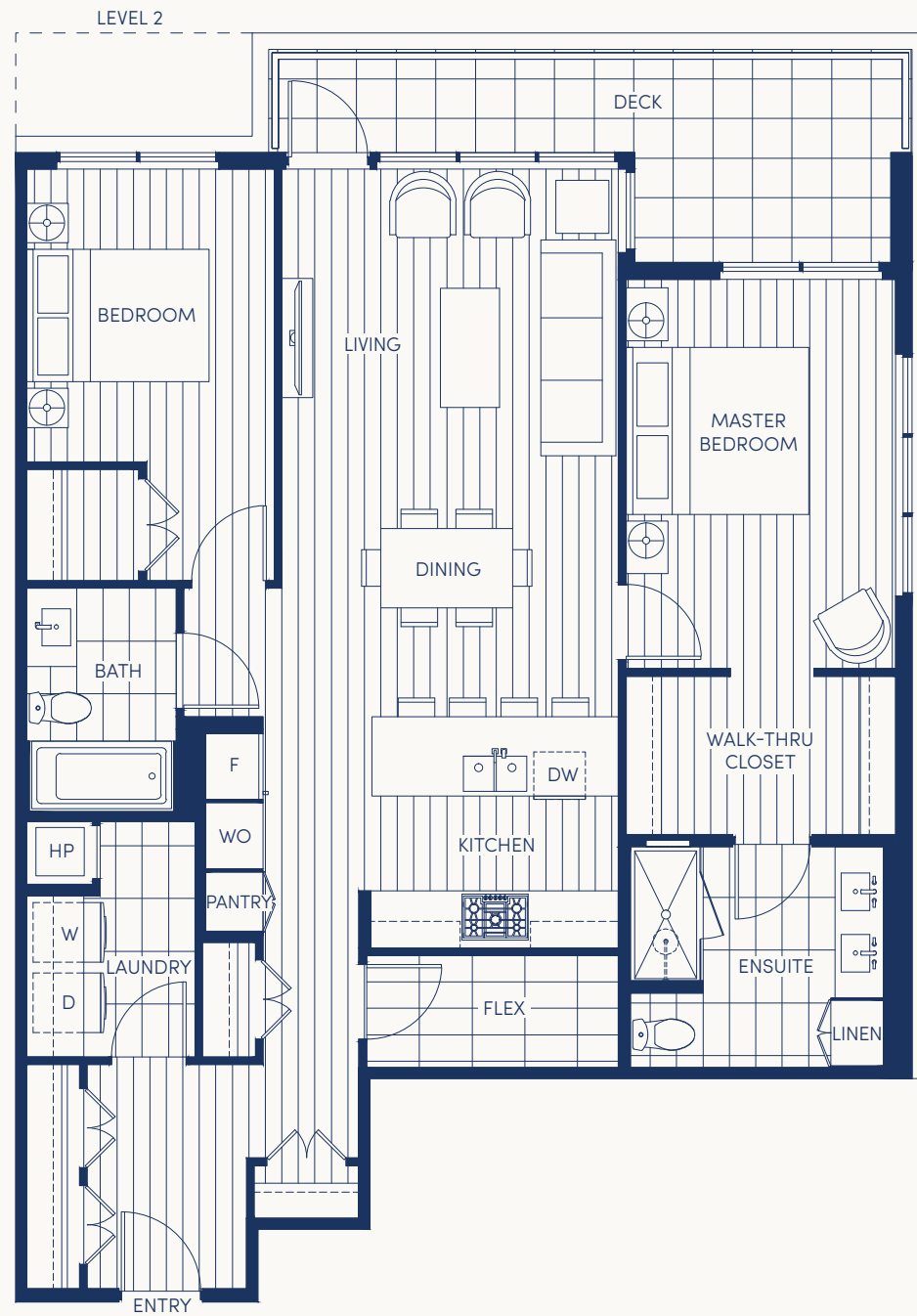
UNIT 204+304

2 Bedroom + 2 Bath + Flex
Interior: 1200 Sq Ft / Exterior: 135 - 180 Sq Ft



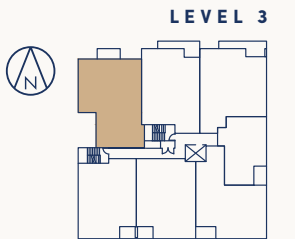
UNIT 205+305

2 Bedroom + 2 Bath + Flex
Interior: 1235 Sq Ft / Exterior: 150 - 195 Sq Ft



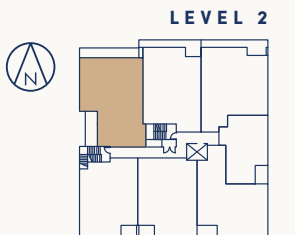
UNIT 303

2 Bedroom + 2 Bath + Den + Flex
Interior: 1345 Sq Ft / Exterior: 70 Sq Ft



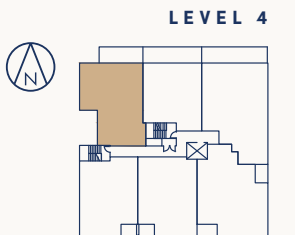
UNIT 203

2 Bedroom + 2 Bath + Den + Flex
Interior: 1345 Sq Ft / Exterior: 285 Sq Ft



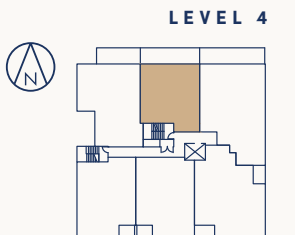
UNIT PH3

2 Bedroom + 2 Bath + Den + Flex
Interior: 1240 Sq Ft / Exterior: 205 Sq Ft



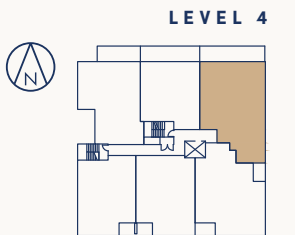
UNIT PH4

2 Bedroom + 2 Bath + Flex
Interior: 980 Sq Ft / Exterior: 270 Sq Ft



UNIT PH5

3 Bedroom + 3 Bath + Flex
Interior: 1510 Sq Ft / Exterior: 305 Sq Ft



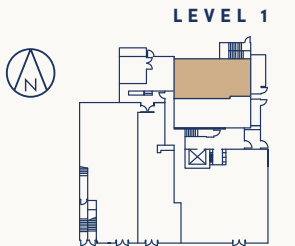
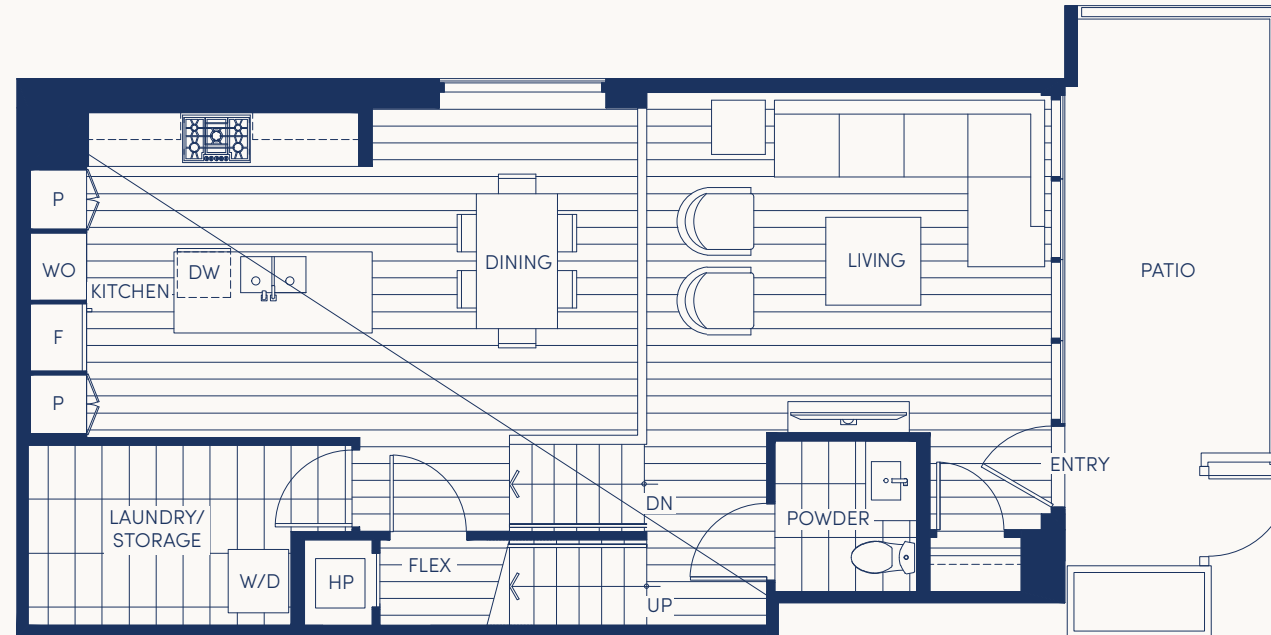
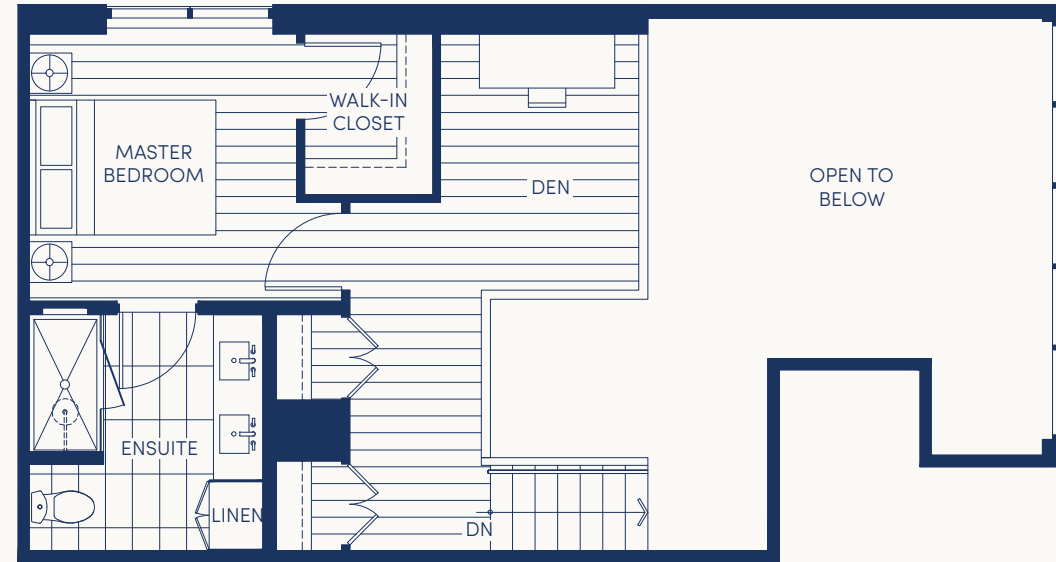
UNIT PH6

3 Bedroom + 2 Bath + Flex
Interior: 1400 Sq Ft / Exterior: 125 Sq Ft



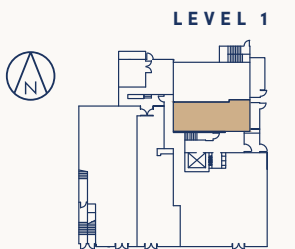
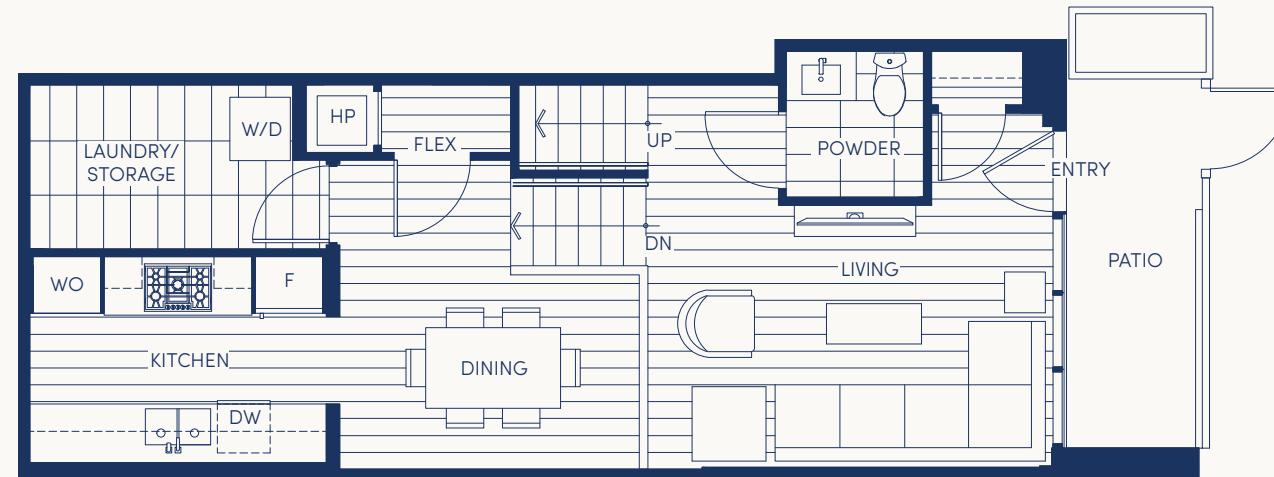
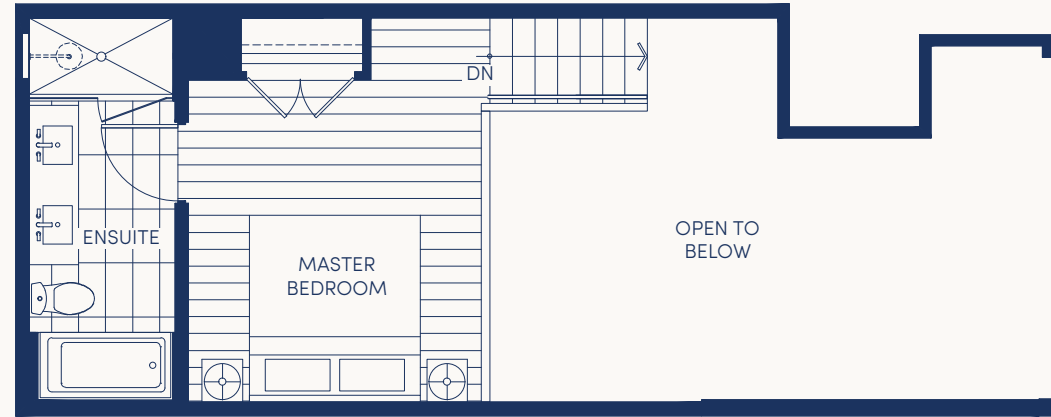
GARDEN TOWNHOME 1

1 Bedroom + 1.5 Bath + Den + Flex
Interior: 1225 Sq Ft / Exterior: 160 Sq Ft



GARDEN TOWNHOME 2

1 Bedroom + 1.5 Bath + Flex
Interior: 895 Sq Ft / Exterior: 85 Sq Ft













MONUMENT

KITSILANO

INSPIRING FORM

- A contemporary architectural vision with Cross Laminated Timber (CLT) construction designed by Yamamoto Architecture
- Building materials and technology are implemented for design, function, and efficiency, and include metal panel cladding, natural stone inspired cladding, and painted cast-in-place concrete
- Landscaping thoughtfully curated and designed by ETA Landscape Architecture to complement the surrounding environment
- Green rooftop flourishes with trees, shrubs, and groundcovers

TAILORED INTERIORS

- Designed by award winning Insight Design Group
- Include ceiling heights 8'6" engineered wood flooring; select from light and dark oak options
- 100% wool carpeting in bedrooms and den is soft underfoot (optional)
- Roller blinds for privacy
- Heating & cooling offering year-round climate control
- Large LG front-load washer and dryer with ColdWash™ Technology

SCULPTED KITCHENS

- Superior integrated appliance package:
 - 30" integrated Gaggenau refrigerator
 - 30" Gaggenau stainless steel 5-burner gas cooktop
 - 30" Gaggenau stainless steel electric wall oven and stacking speed oven
 - 30" Wolf stainless steel chimney hood fan
 - Gaggenau stainless steel Energy Star dishwasher
- UV lacquered, matte cabinetry in a re-imagined modern shaker style
- Polished quartz slab countertop flawlessly transitions to neolith stone backsplash
- Kitchen island with quartz slab with waterfall edge detail provides additional counter and storage space
- Franke under-mount Neolithic with sleek Hansgrohe Axor Citterio faucet
- Built-in recycling/storage is efficient and discreet

SOPHISTICATED BATHROOMS

- Radiant in-floor heating for daily comfort
- Kohler Persuade® Curv dual-flush toilet
- Kohler Awaken® Series shower fixtures
- Main Bathroom:
 - Quartz countertops are topped with a floating wall mirror

- 12 x 24 Porcelain tile flooring complements ceramic matte-white tile shower surround

- Alcove bath tub for a relaxing bathing experience

· Powder Room:

- Modern glazed ceramic tile feature wall makes a statement

- 12 x 24 Porcelain tile flooring

- Quartz countertop

· Master Ensuite:

- UV lacquered, matte finish cabinetry complete with custom brushed nickel pulls

- Marble floor to ceiling tile

APPEALING AMENITIES

- Secured underground parking, including the convenience of electric charging stalls
- Secure bicycle storage available for every home
- Socialize or unwind on a shared rooftop area with hobby/work space, garden, and outdoor BBQ

PEACE OF MIND

- Secure entry system to parkade and building
- Comprehensive 2-5-10 Home Warranty

FEATURES