



BC Online

BC Online Land Title Internet Service
Provided in co-operation with
Land Title and Survey Authority

LAND TITLE AND SURVEY AUTHORITY - DOCUMENT RETRIEVAL WEB REQUEST

CLIENT NAME: LANARK HOLDINGS DBA HOME TOWN R
ADDRESS: BOX 477
SQUAMISH BC VON 3G0

PICK-UP INSTRUCTIONS:

USER ID: PD43301
ACCOUNT NO.: 721238
REFERENCE NO.: R38971

APPLICATION NO.: LMS1151 LM
REQUESTED AT: 05-08-30 10:39
FOLIO NO.:

PAGES: 056

REMARKS:

BC Online Land Title Fax Service

Help Desk Victoria (250) 953-8200
In B.C. 1-800-663-6102
Administration Office ... (250) 953-8250
Fax Number (250) 953-8222

Persons who need to rely on a plan for legal purposes must examine the official version at the Land Title Office in which the plan is deposited.
The bylaw and common property sheets attached to strata plans have been repealed. Information regarding the bylaws and/or dealings affecting the common property of strata plans must be obtained from the general index and/or common property index on ALTOS. Refer to the BC Online user guide for access information.

PHASE ONE STRATA PLAN
OF PART OF LOT 16,
D.L. 3903, PLAN 22329,
Gp. 1, N.W.D.,
Resort Municipality of Whistler, B.C.
B.C.S. 22.016.1
SCALE: 1:1000
ALL DISTANCES SHOWN ARE IN METRES

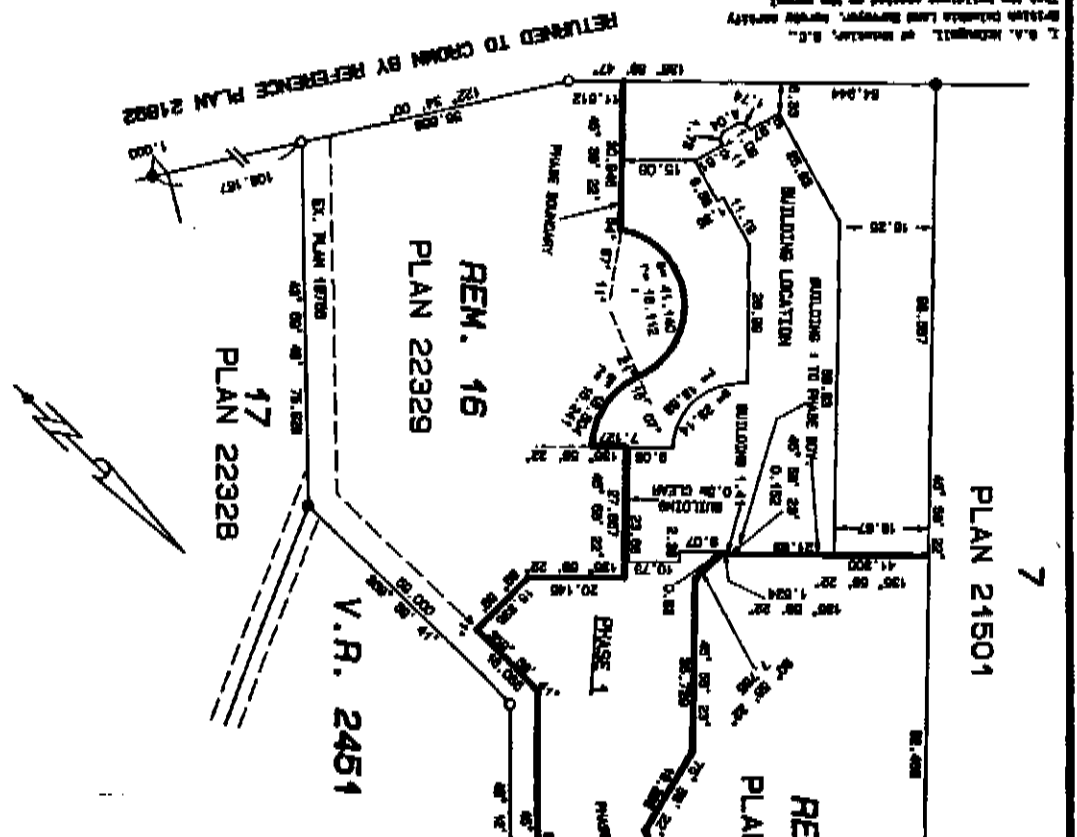
20 10 0 40
 The Office for the Service of Documents
 on the 'Strata Corporation', i.e. -
 'The Office', Strata Plan No. LMS/151
 of Whistler, B.C. is at:
 4000 SHERARD DRIVE
 WHISTLER, B.C.
 V0N 1B4

FOR STRATA (COOP)
MAL ADDRESS
SEE STRATA PLAN
GENERAL INDEX

Deputy Registrar
 D.L. 3903
 Registered in the Land Title Office at
 Whistler, B.C. this ... day of
 9
 Strata Plan LMS/151 deposited and
 registered in the Land Title Office at
 Whistler, B.C. this ... day of
 9

Sept 1994 - 8245455
 Whistler, B.C. V0N 1B4
 4000 SHERARD DRIVE
 WHISTLER, B.C.
 V0N 1B4

LEGEND
 Bearings are astronomic and are derived
 from Plan 22329
 Found Placed
 Standard Iron Post (Type B)
 S.L. or R. Denotes 'Street Lot'
 C Denotes 'Common Property'
 L.C.P. or LCP Denotes 'Limited Common Property'
 P.L. or PL Denotes 'Part' or 'Part of'



I, B.A. McWHIRTER, of Whistler, B.C.,
 2710th District Land Surveyor, hereby certify
 that the buildings located on the parcel
 described above are really within the strata
 described in this report. Dated at Whistler, B.C.
 on this 29th day of November, 1994.
 B.A. McWhirter
 B.C.L.S.
 THIS PLAN LIES WITHIN THE
 'SEAWAY-FLOOET' REGIONAL DISTRICT
 VANCOUVER AND WHISTLER, B.C.
 HERMAN, BURBURY & OKE,
 PROFESSIONAL LAND SURVEYORS
 (J-23028) S-8522-1

NOVEMBER 18, 1993
 S-8522-2
LMS

LOT NO.	SHEET NO.	Schedule of Unit entitlement	Schedule of Interest Upon Destruction	Schedule of Voting Rights
1	8, 19	541	298	298
2	10, 17	549	298	298
3	10, 17	538	310	310
4	10, 17	537	318	318
5	10, 17	540	324	324
6	10, 17	537	330	330
7	10, 17	725	450	450
8	10, 17	530	420	420
9	10, 17, 18	536	398	398
10	10, 17	545	378	378
11	10, 17	728	420	420
12	10, 17	538	322	322
13	10, 17	537	318	318
14	10, 17	535	314	314
15	10, 17	535	308	308
16	10, 17	547	308	308
17	9, 19	538	312	312
18	9, 19, 20	731	410	410
19	8, 18, 20	732	410	410
20	11, 19	540	308	308
21	12, 17	550	310	310
22	12, 17	539	318	318
23	12, 17	539	326	326
24	12, 17	538	332	332
25	12, 17	538	336	336
26	12, 17	730	478	478
27	12, 18	520	458	458
28	12, 17, 18	530	488	488
29	12, 17, 18	537	420	420
30	12, 17, 18	538	398	398
31	12, 17, 18	737	430	430
32	12, 17, 18	536	398	398
33	12, 17	536	334	334
34	12, 17	537	330	330
35	12, 17	536	326	326
36	12, 17	548	322	322
37	11, 19	539	318	318
38	11, 19, 20	729	430	430
39	11, 18, 20	733	430	430
40	11, 20	733	378	378
41	11, 18, 20	670	430	430
42	11, 20	536	398	398
43	11, 19, 20	773	398	398
44	13, 18	539	318	318
45	14, 17	549	330	330
46	14, 17	536	338	338
47	14, 17	537	348	348

PHASE 1.
 STRATA PLAN
 LMS. 1151
 CONDOMINIUM ACT
 Second Sheet: Sheet 2 of 22 Sheets.

S-6522-3
 8.11.15
 NOVEMBER 18, 1983

LOT NO.	SHEET NO.	FORM 1 Schedule of Unit entitlement	FORM 2 Schedule of Interest Upon Destruction	FORM 3 Schedule of Voting Rights
48	14, 17	538	352	1
49	14, 17	538	358	1
50	14, 17	731	479	1
51	14, 18	622	479	1
52	14, 17, 18	532	450	1
53	14, 17, 18	537	430	1
54	14, 17, 18	730	458	1
55	14, 17, 18	536	378	1
56	14, 17	536	362	1
57	14, 17	536	358	1
58	14, 17	536	354	1
59	14, 17	550	350	1
60	13, 19	537	346	1
61	13, 19	731	458	1
62	13, 19	735	458	1
63	13, 20	730	398	1
64	13, 19, 20	642	358	1
65	13, 19, 20	668	450	1
66	13, 20	532	368	1
67	13, 19, 20	771	430	1
68	15, 19	539	340	1
69	15, 17	538	358	1
70	16, 17	538	358	1
71	16, 17	538	366	1
72	16, 17	539	378	1
73	16, 17	538	382	1
74	16, 17	730	538	1
75	16, 17, 18	965	650	1
76	18, 17, 18	732	498	1
77	16, 17, 18	536	410	1
78	16, 17	538	406	1
79	16, 17	536	402	1
80	16, 17	537	398	1
81	16, 17	540	394	1
82	15, 19	545	380	1
83	15, 19, 20	730	508	1
84	15, 19, 20	734	508	1
85	15, 20	730	430	1
86	15, 19, 20	638	378	1
87	15, 19, 20	669	498	1
88	15, 20	535	398	1
89	15, 19, 20	775	468	1
TOTALS		53980	34486	89

PHASE 1.
 STRATA PLAN
 LMS. 1151
 CONDOMINIUM ACT
 Second Sheet: Sheet 3 of 22 Sheets.

AS TO MORTGAGE BE138887 AND ASSIGNMENT OF RENTS BE138888 J.C. WEST, INC. Authorized Signatory	AS TO LEASEHOLD INTEREST, PONDOR PROPERTY MANAGEMENT LTD. (INC. NO. 34250) Authorized Signatory
AS TO MORTGAGE BE287478, RENTS BE287479 & BE287478, COVENANTS & PRIORITY AGREEMENTS, BE28055, BE281186, MESORT MUNICIPALITY OF WHISTLER Mayor Clerk	AS TO LEASEHOLD INTEREST, PONDOR PROPERTY MANAGEMENT LTD. (INC. NO. 34250) Authorized Signatory
AS TO MORTGAGE BE287478, ASSIGNMENT OF RENTS BE287479 AND PRIORITY AGREEMENTS BE243886 AND BE243887 LAURENTIAN BANK OF CANADA, Authorized Signatory	AS TO MORTGAGE BE287478, ASSIGNMENT OF RENTS BE287479 AND PRIORITY AGREEMENTS BE243886 AND BE243887 LAURENTIAN BANK OF CANADA, Authorized Signatory

PHASE ONE

Second Sheet - Sheet 4 of 22 Sheets.
 STRATA PLAN
 LMS.1151

CONDOMINIUM ACT

STATUTORY DECLARATION

I/we the undersigned do solemnly declare that:-
 1. I/we (as/s) the Owner-Developer or the duly authorized Agent of the Owner-Developer
 2. The Strata Plan is for residential and commercial use.
 3. I/we make this solemn declaration conscientiously believing it to be and knowing that it is of the same force and effect as if made under oath.

Approved before me at Vancouver in the Province of British Columbia this 22nd day of November, A.D. 1993

David Nelson
 David Nelson
 Notary Public in and for the Province of British Columbia

Accepted as to Forms 1, 2 and 3 on the 22nd day of Nov. 1993

David Nelson
 David Nelson
 Superintendent of Real Estate

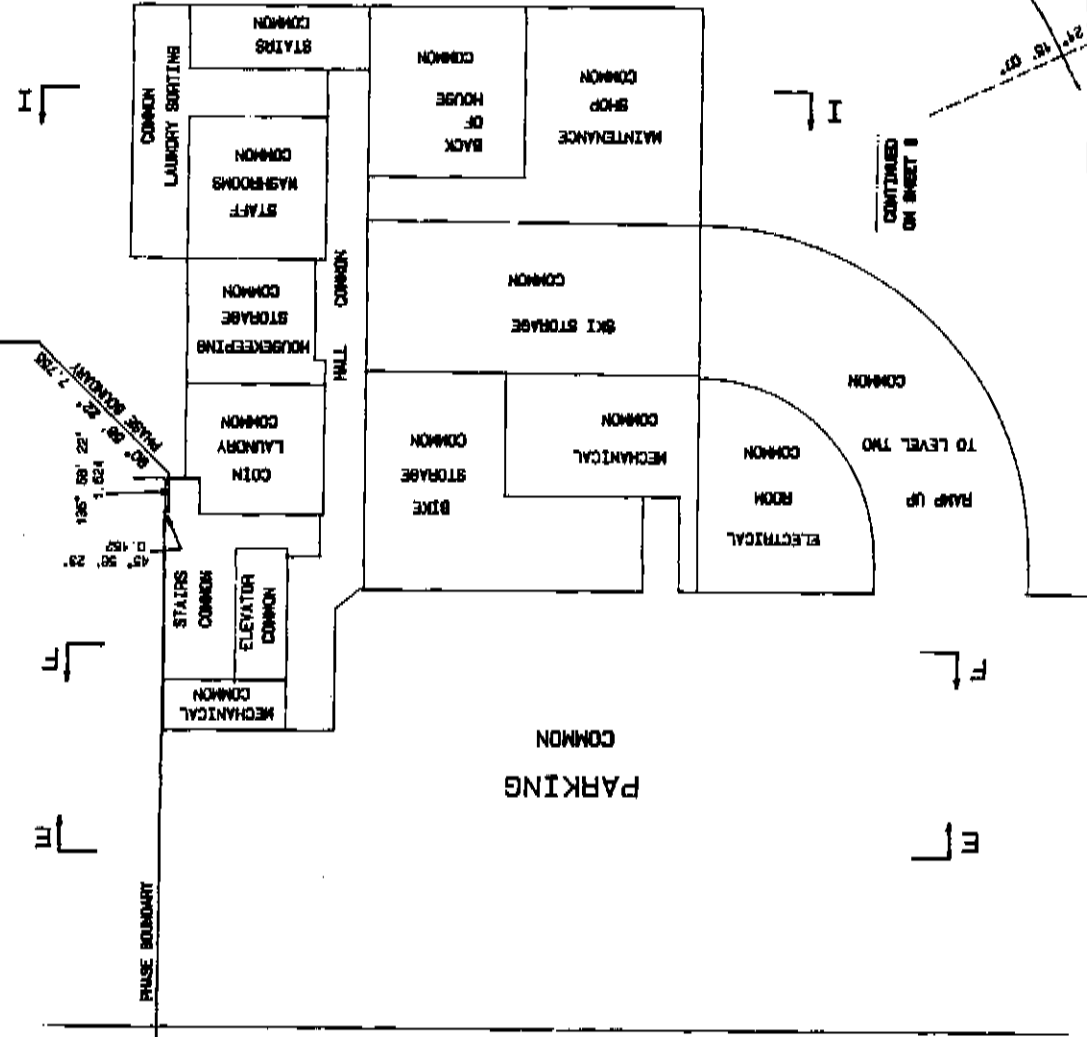
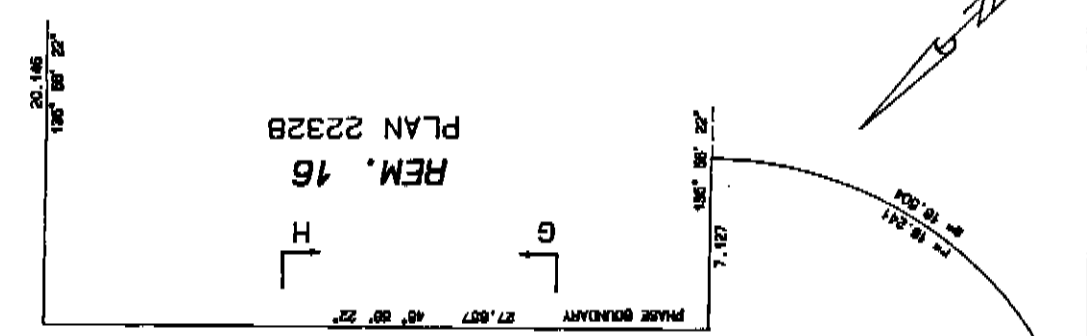
Approved as Phase I of a III Phase Strata Plan under the "Condominium Act" Dated this 22nd day of November, 1993

David Nelson
 David Nelson
 Municipal Approving Officer for the Report Municipality of Whistler.

Participate under Section 8(1) I, B.A. McDougall, a British Columbia Land Surveyor, hereby certify that the building shown in this Strata Plan has not, as of the 10th day of November, 1993, been previously occupied.

David Nelson
 B.C.L.S.

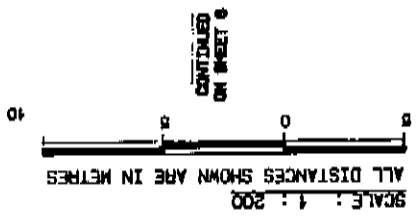
NOVEMBER 16, 1983 S-6522-5



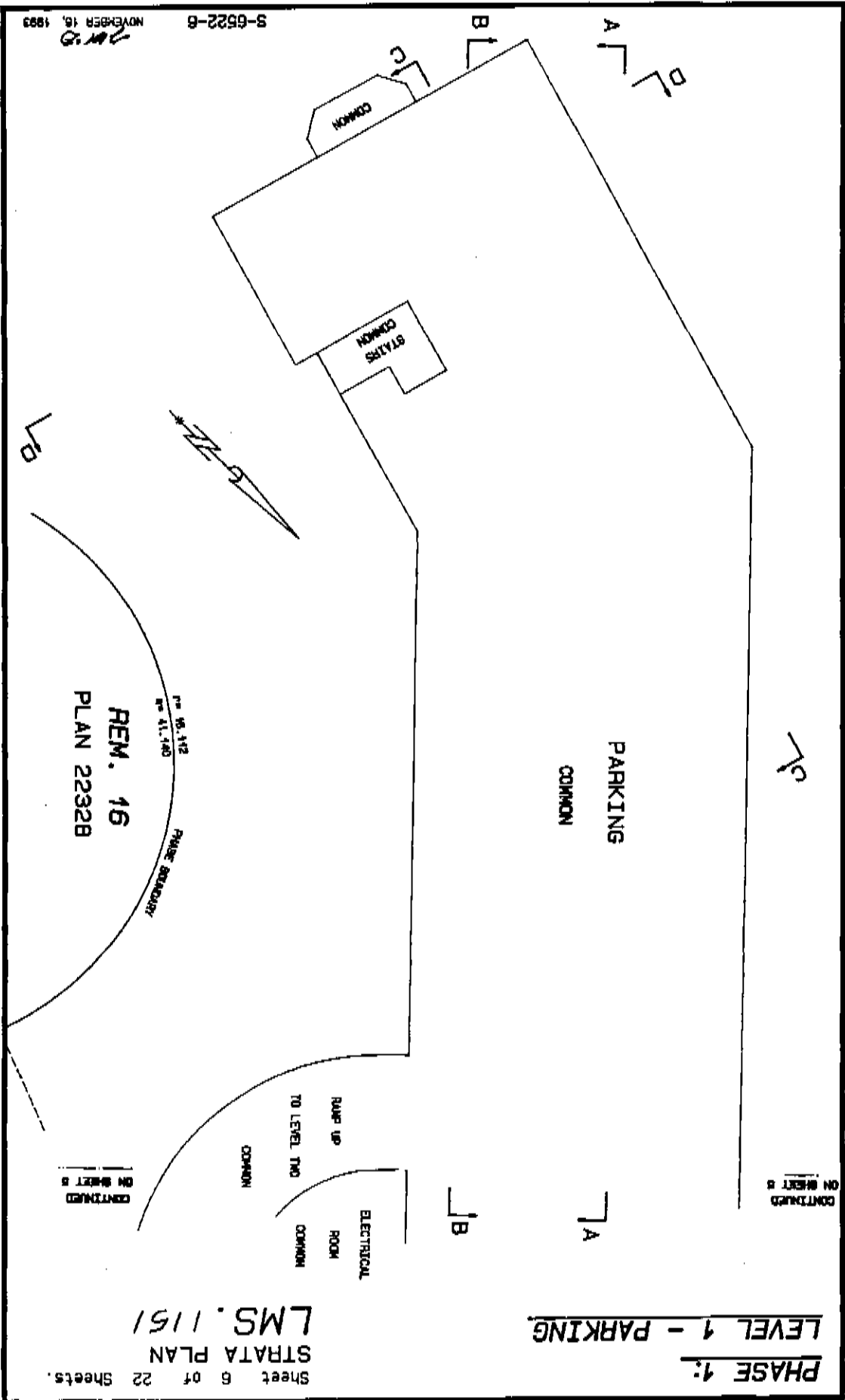
REM. 16
PLAN 2232B

STATA PLAN
LMS.1151

Sheet 5 of 22 Sheets.



PHASE 1:
LEVEL 1 - PARKING



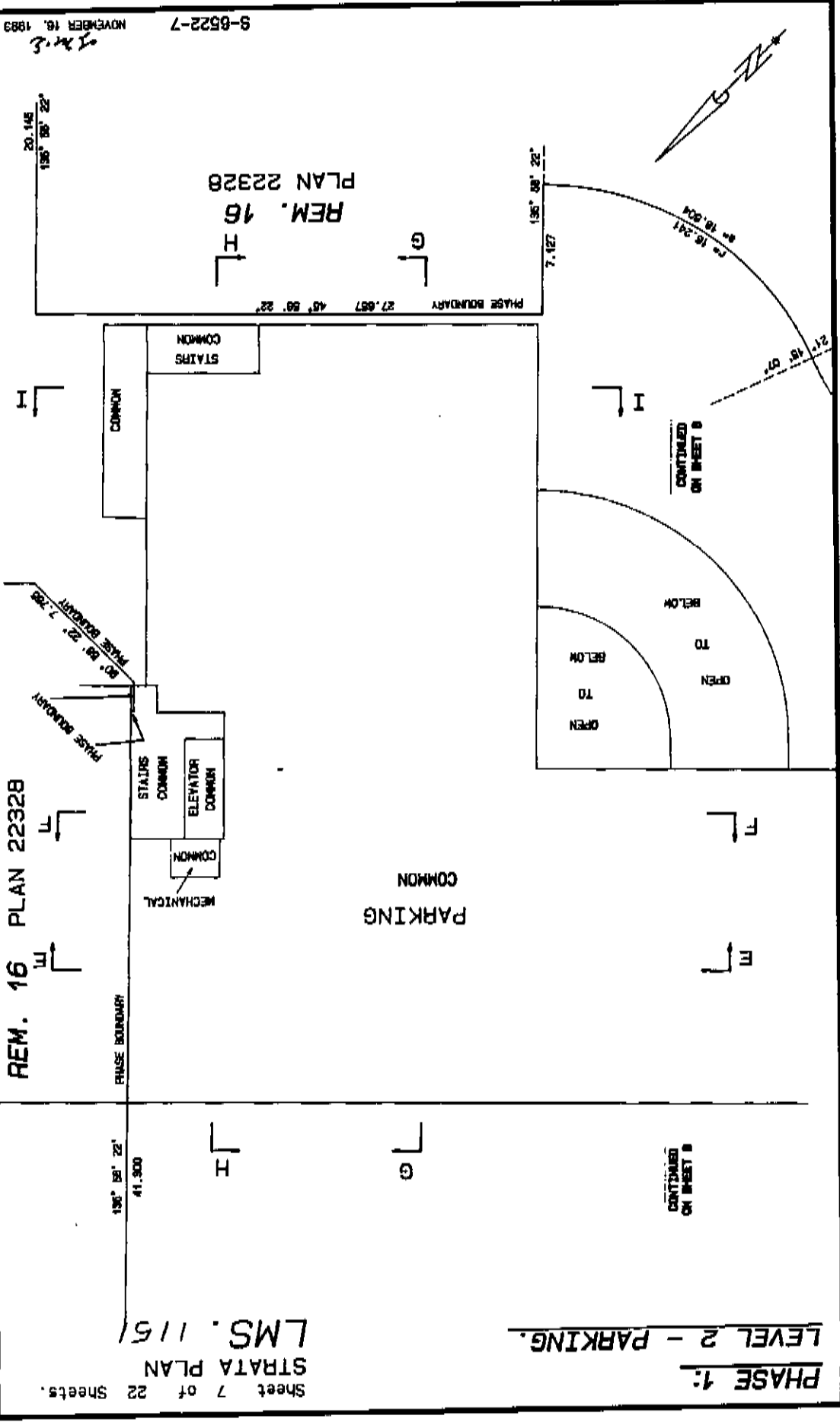
NOVEMBER 16, 1993
G.M.C.
S-6522-B

REM. 16
PLAN 2232B
P# 95.112
R# 41.140
PHASE BOUNDARY

CONTINUED
ON SHEET 2

Sheet 6 of 22 Sheets.
STRATA PLAN
LMS.1151

PHASE 1:
LEVEL 1 - PARKING



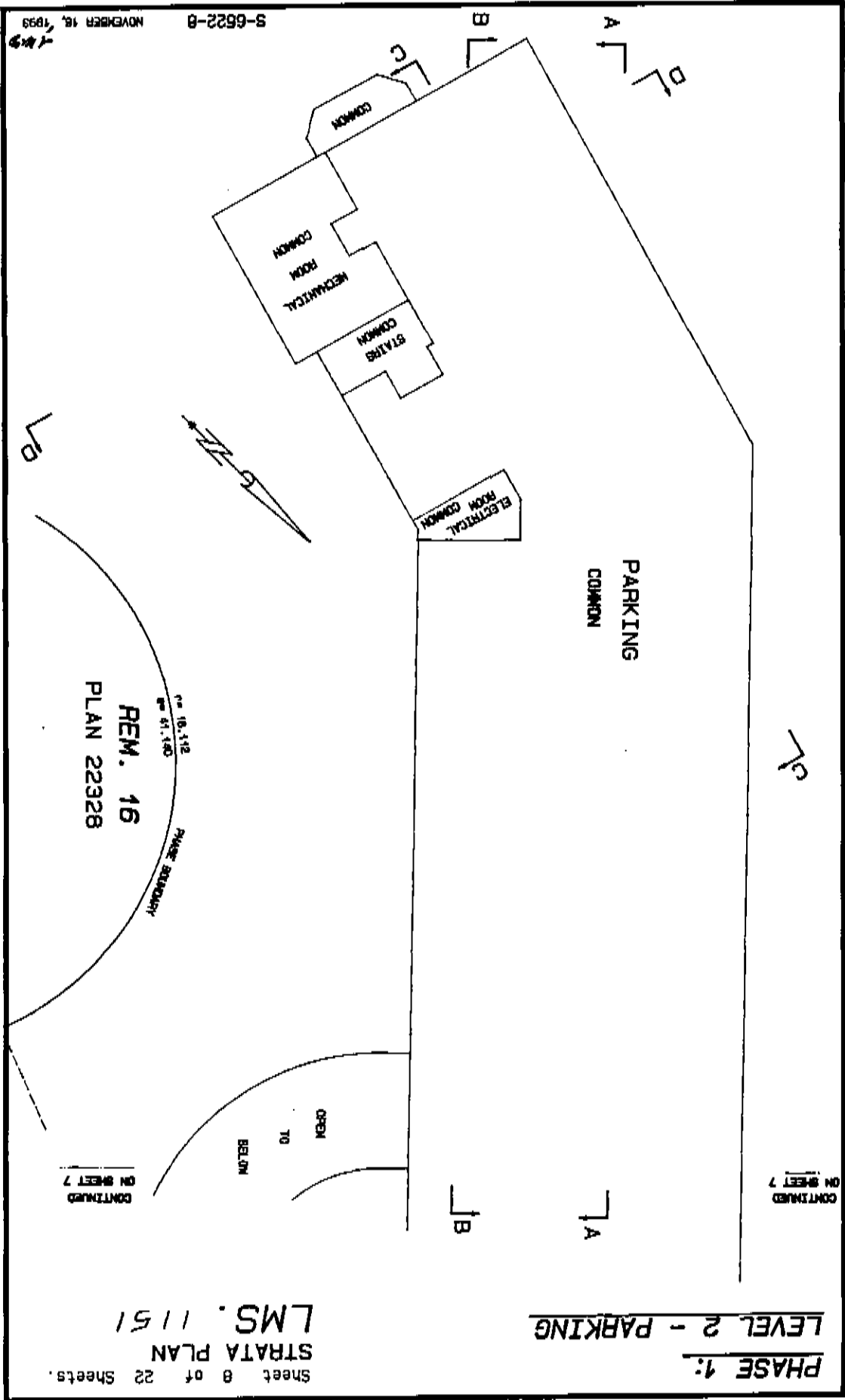
PHASE 1:
 LEVEL 2 - PARKING.
 STRATA PLAN
 LMS. 1151
 Sheet 7 of 22 Sheets.

REM. 16 PLAN 22328

REM. 16
 PLAN 22328

NOVEMBER 16, 1989
 J.M.S.

9-8522-7



NOVEMBER 18, 1993

9-6622-8

Sheet 8 of 22 Sheets.
STRATA PLAN
LMS. 1151

PHASE 1:
LEVEL 2 - PARKING

CONTINUED
ON SHEET 7

CONTINUED
ON SHEET 7

OPEN
TO
BELOW

REM. 16
PLAN 22328

10,112
51,140

PHASE BOUNDARY

PARKING
COMMON

ELECTRICAL
ROOM COMMON

STAIRS
COMMON

MEDICAL
ROOM
COMMON

COMMON

C/C

A/A

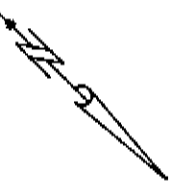
B/B

A/A

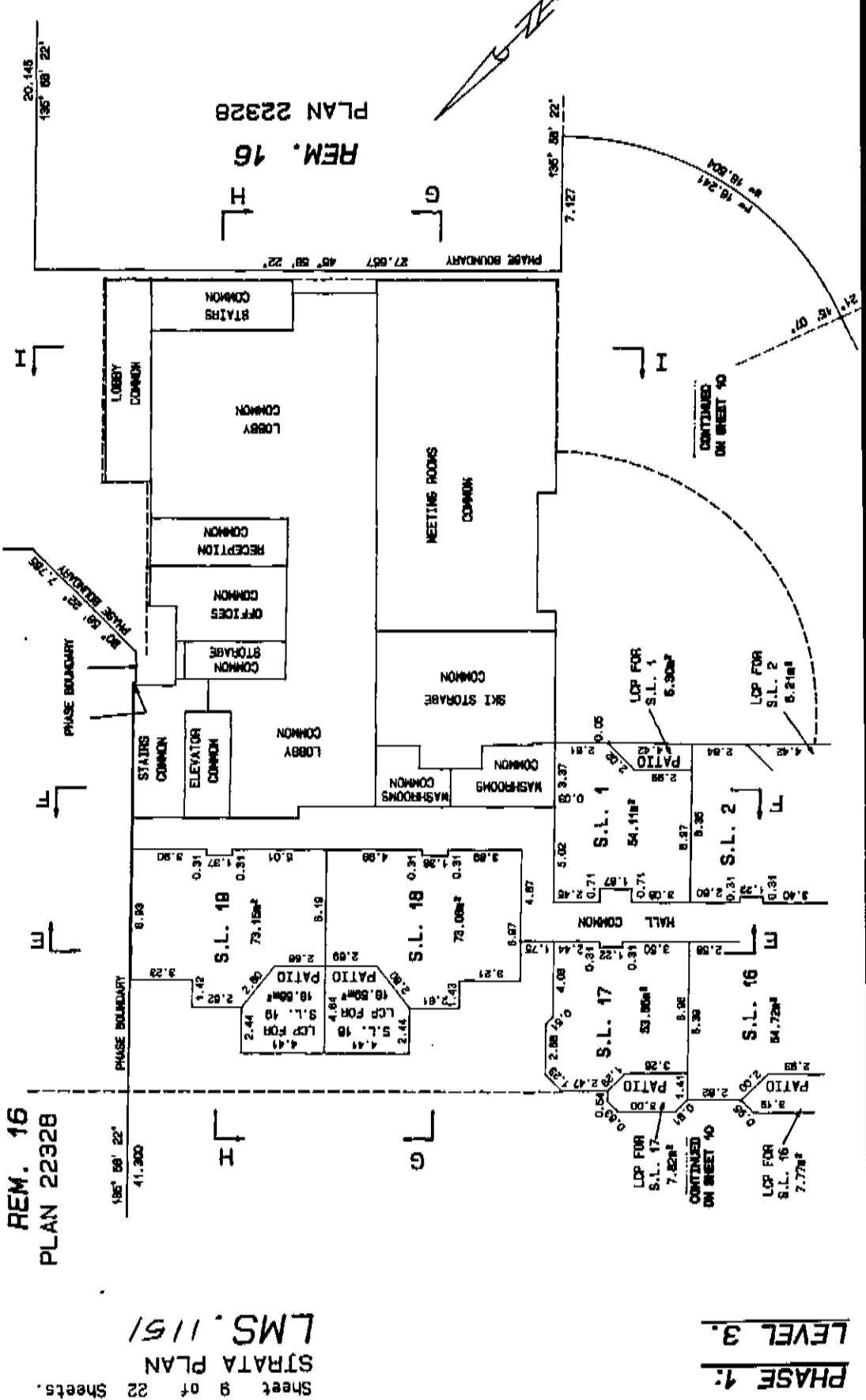
B/B

C/C

D/D



REM. 16
PLAN 22328
NOVEMBER 19, 1993
9-6522-9



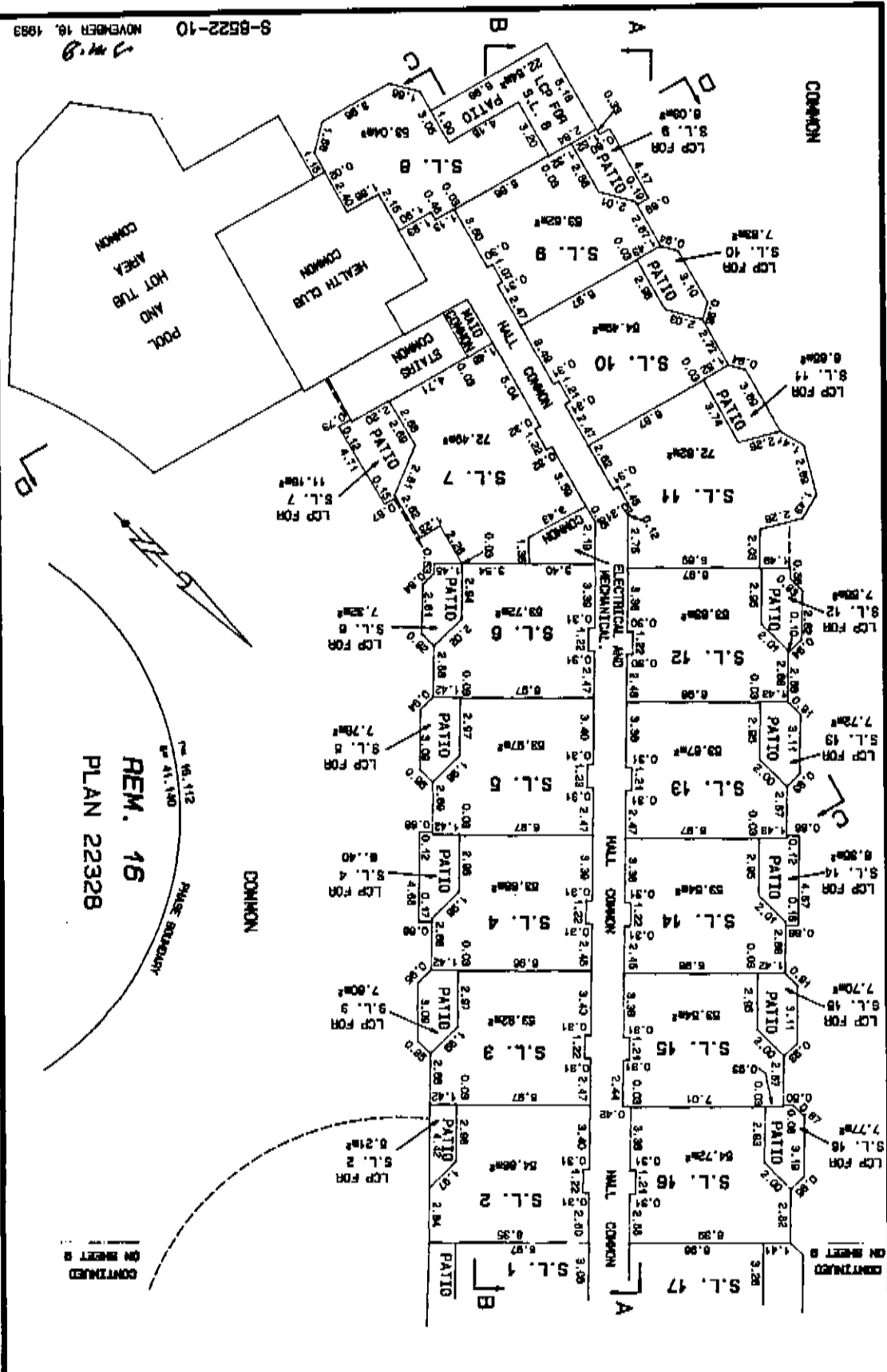
Sheet 9 of 22 Sheets.
SYRATA PLAN
LMS. 1151

PHASE 1:
LEVEL 3.

REM. 16
PLAN 22328

REM. 16
PLAN 22328

PHASE 1:
LEVEL 3.
 STRATA PLAN
 LMS.1151
 Sheet 10 of 22 Sheets.



NOVEMBER 18, 1983
 B.M.C.

REM. 16
 PLAN 22328

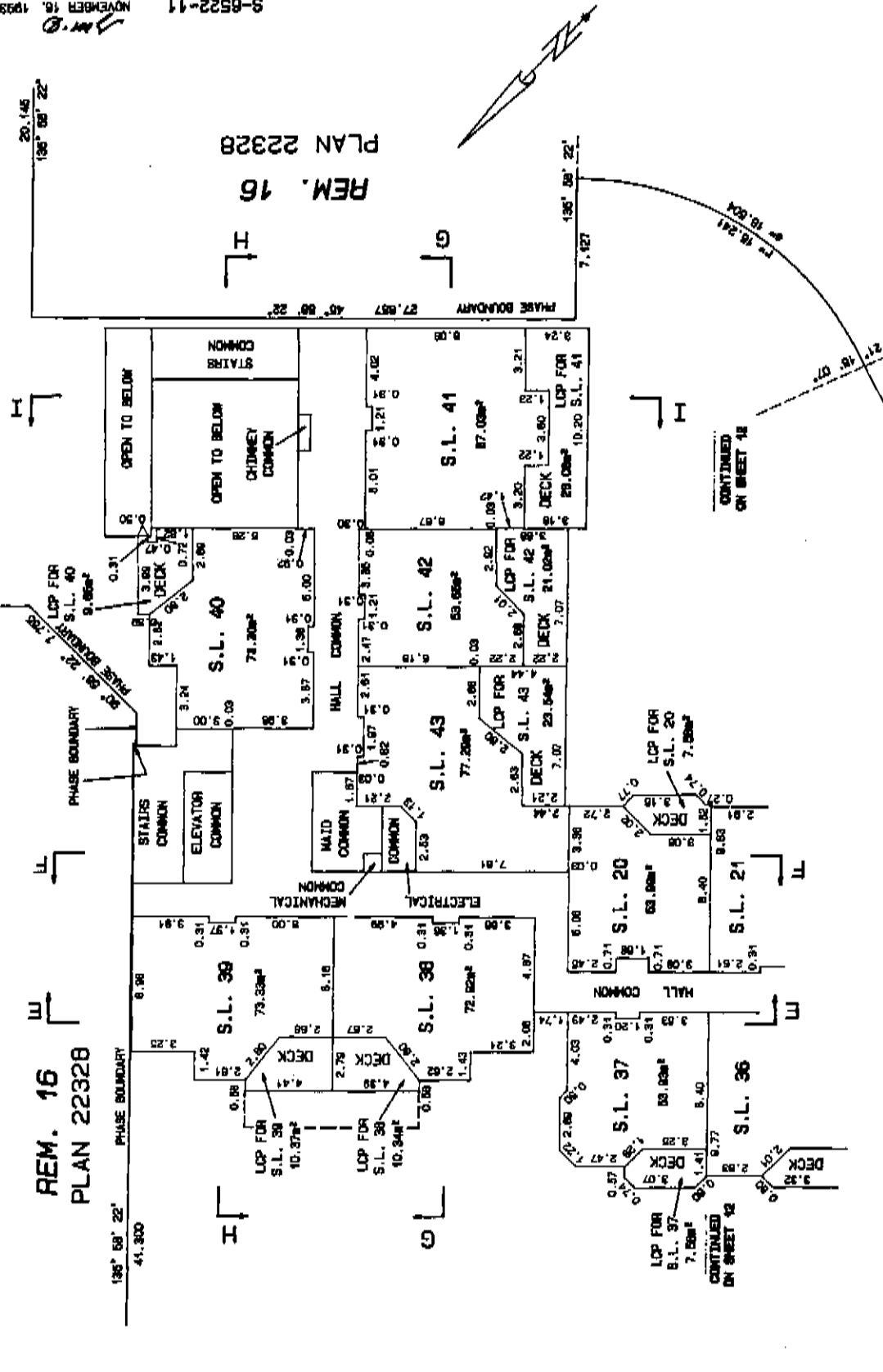
CONTINUED
 ON SHEET 9

PHASE 1: LEVEL 4.
 STRATA PLAN
 LMS. 1151
 Sheet 11 of 22 Sheets.

REM. 16
 PLAN 22328

REM. 16
 PLAN 22328

9-65222-11
 NOVEMBER 18, 1993

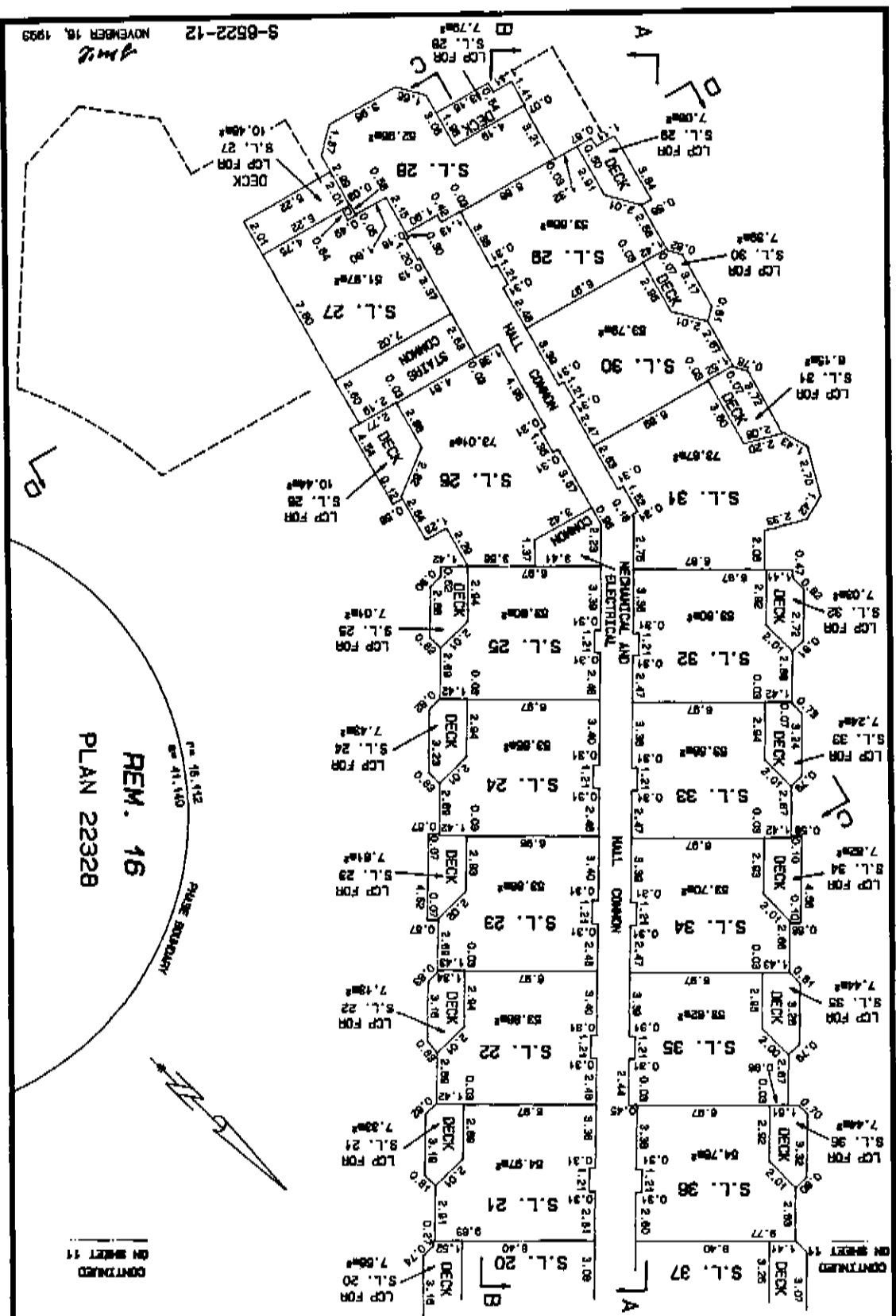


CONTINUED
 ON SHEET 12

CONTINUED
 ON SHEET 12

PHASE 1:
LEVEL 4.
STRATA PLAN
LMS. 1151

Sheet 12 of 22 Sheets.
CONTINUED ON SHEET 11



REM. 16
PLAN 2232B

NOVEMBER 18, 1993
S-6522-12

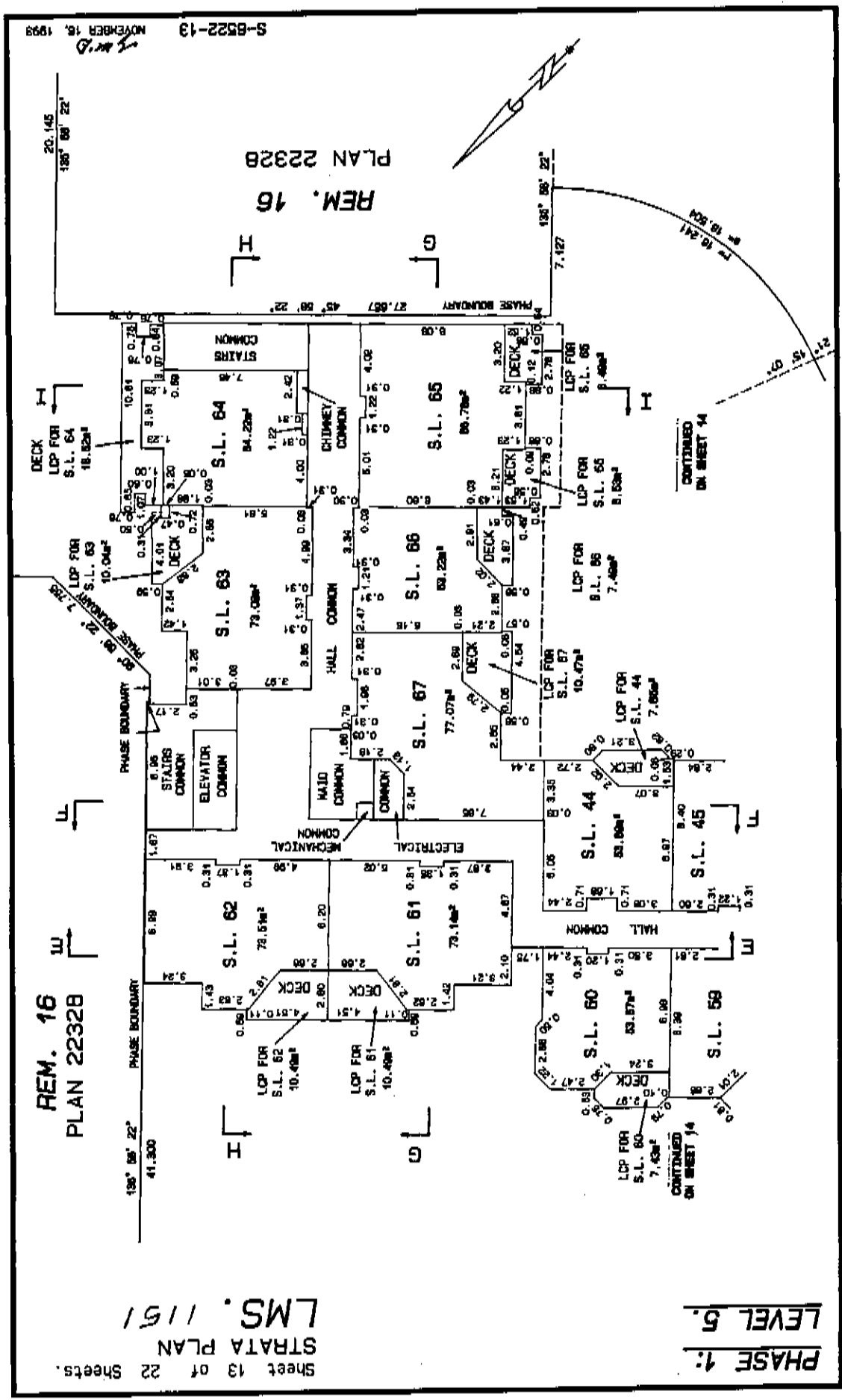
S-8522-13
NOVEMBER 16, 1998
L.M.S.

REM. 16 PLAN 2232B

REM. 16 PLAN 2232B

Sheet 13 of 22 Sheets.
STRATA PLAN
LMS. 1151

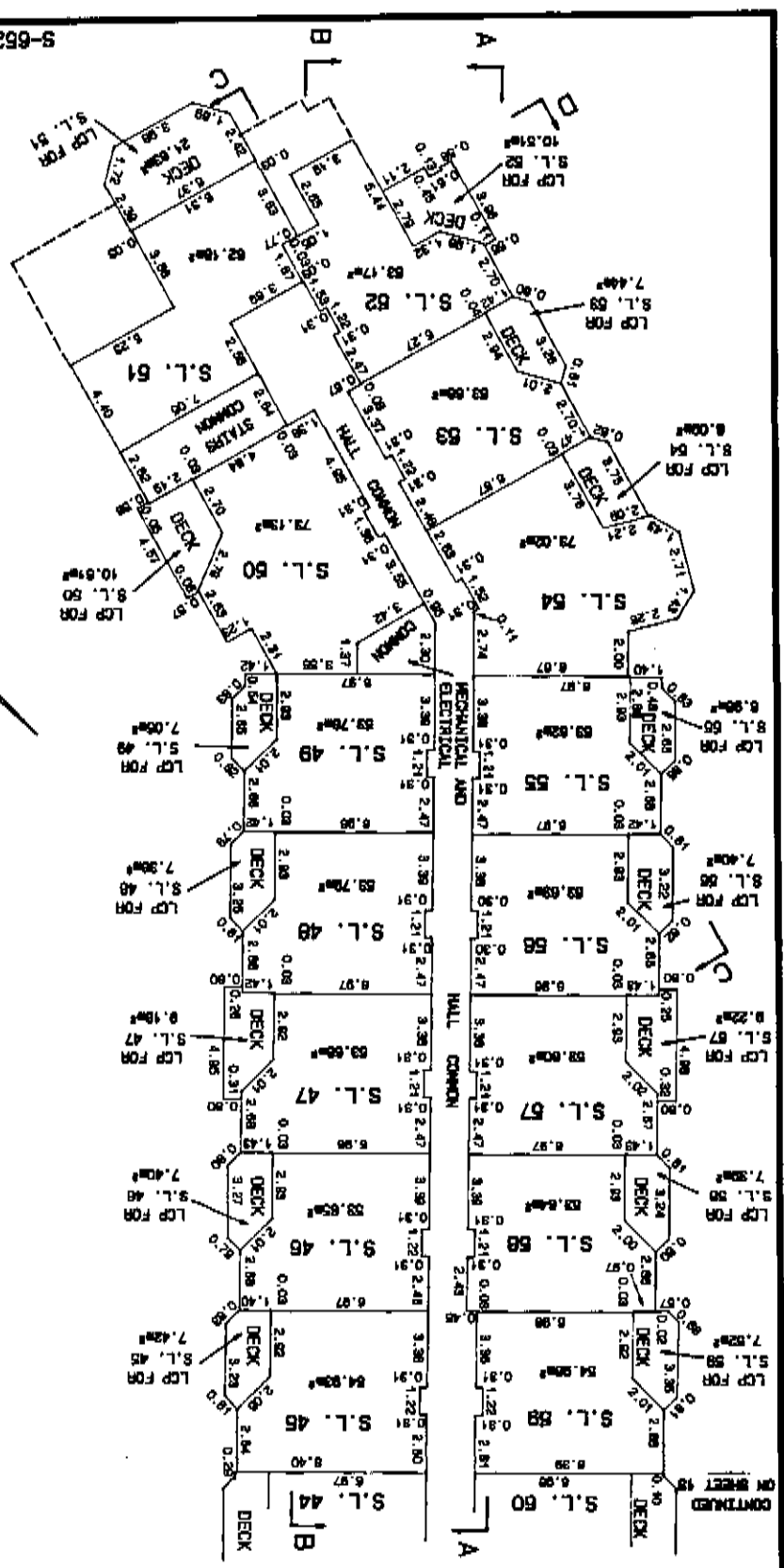
PHASE 1:
LEVEL 5.



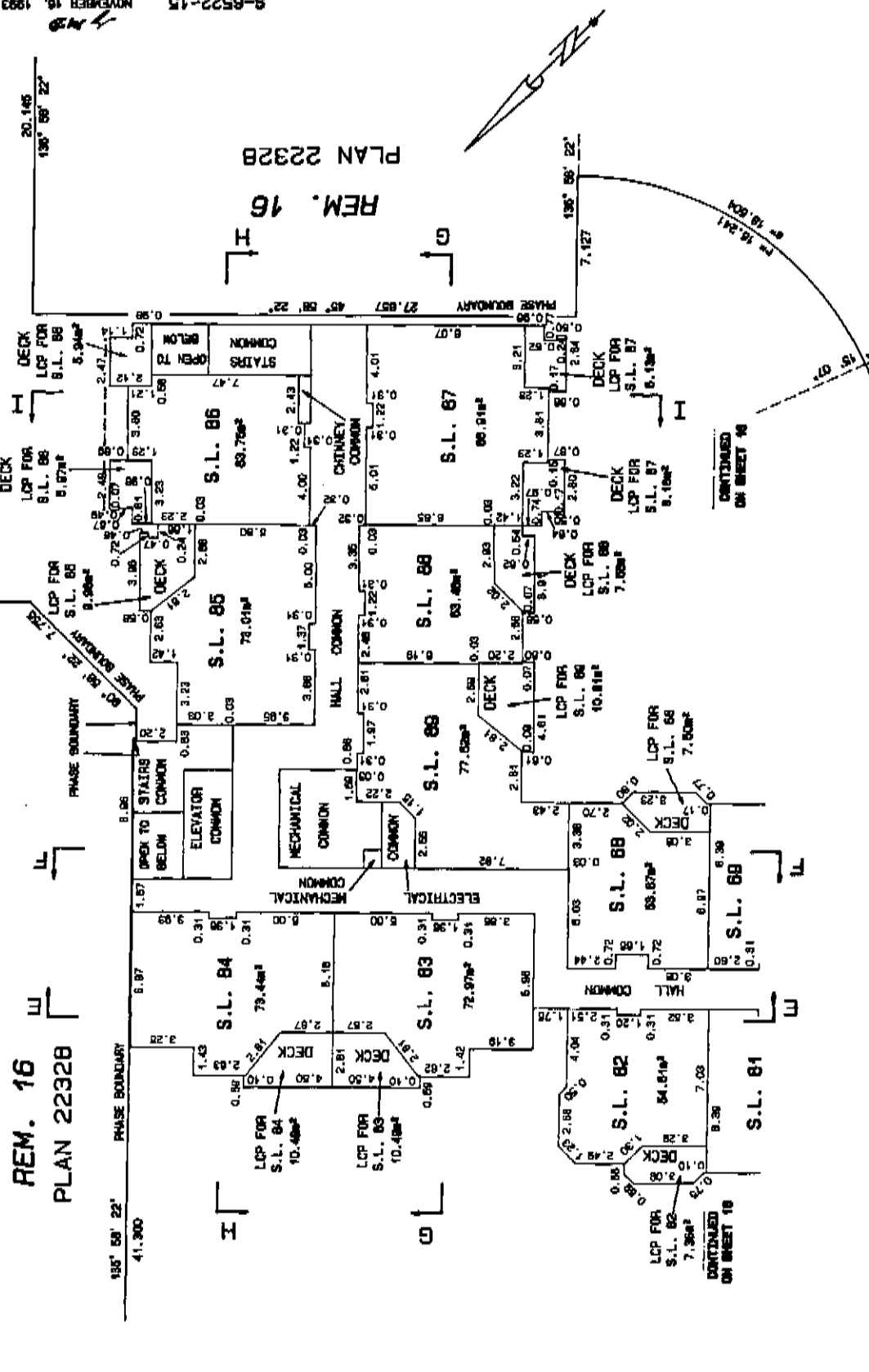
PHASE 1: LEVEL 5.
STRATA PLAN
LMS.1151
Sheet 14 of 22 Sheets.

CONTINUED ON SHEET 13

REM. 16
PLAN 22328



8-6522-15 NOVEMBER 16, 1993



Sheet 15 of 22 Sheets.
STRATA PLAN
LMS. 1151

PHASE 1:
LEVEL 6.

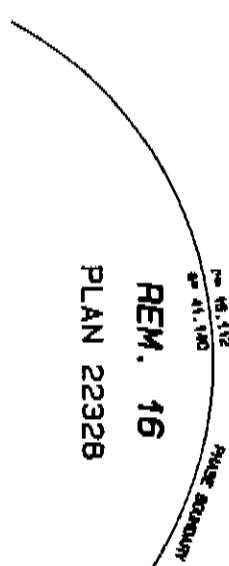
CONTINUED
ON SHEET 16

CONTINUED
ON SHEET 16

9-6522-16 NOVEMBER 16, 1993

Handwritten initials

Handwritten 'L' and 'D' with arrows



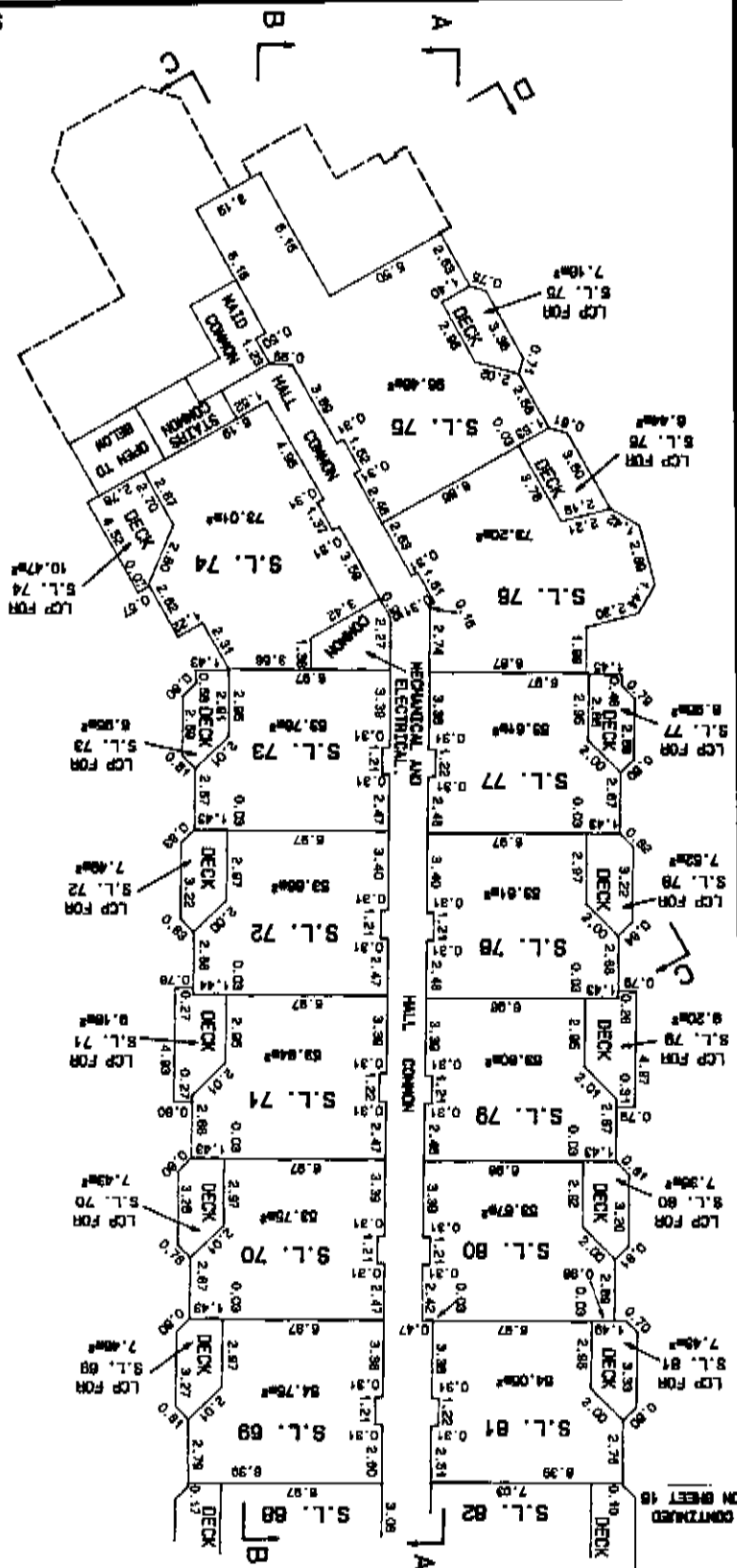
REM. 16
PLAN 22328

Page 16 of 16
Nov 16, 1993

CONTINUED ON SHEET 16

Sheet 16 of 22 Sheets.
STRATA PLAN
LMS.1151

PHASE 1:
LEVEL 6.



CONTINUED ON SHEET 16

PHASE 1:
SECTIONS

SECTION A - A

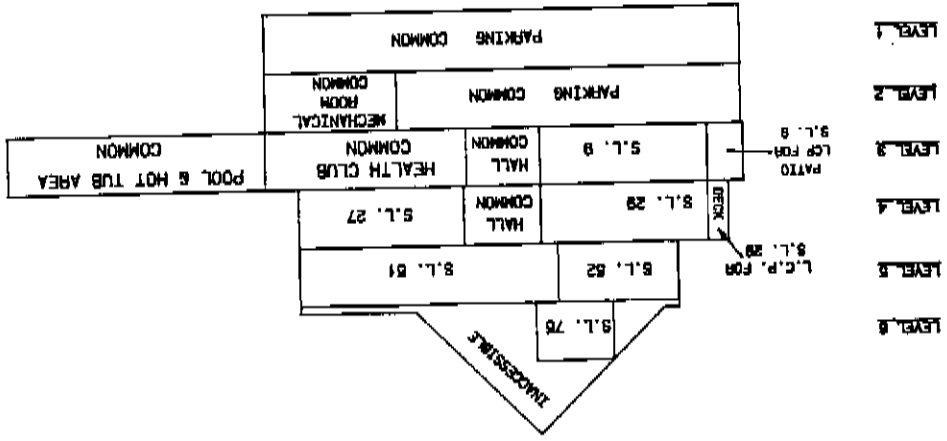
INACCESSIBLE										
LEVEL 1	S.L. 82	S.L. 81	S.L. 80	S.L. 79	S.L. 78	S.L. 77	S.L. 76	PT. OF TOP FLOOR S.L. 75	S.L. 75	S.L. 74
LEVEL 2	S.L. 60	S.L. 59	S.L. 58	S.L. 57	S.L. 56	S.L. 55	S.L. 54	S.L. 53	S.L. 52	S.L. 51
LEVEL 3	S.L. 37	S.L. 38	S.L. 36	S.L. 34	S.L. 33	S.L. 32	S.L. 31	S.L. 30	S.L. 29	S.L. 28
LEVEL 4	S.L. 17	S.L. 16	S.L. 15	S.L. 14	S.L. 13	S.L. 12	S.L. 11	S.L. 10	S.L. 9	S.L. 8
PARKING COMMON										
PARKING COMMON										

SECTION B - B

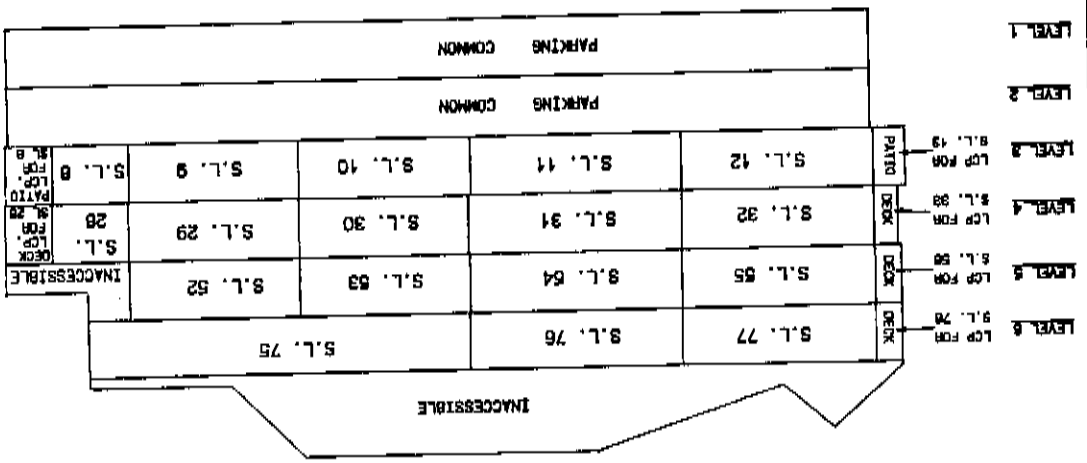
INACCESSIBLE									
LEVEL 1	S.L. 75	HALL COMMON	S.L. 74	S.L. 73	S.L. 72	S.L. 71	S.L. 70	S.L. 69	S.L. 68
LEVEL 2	S.L. 26	HALL COMMON	S.L. 50	S.L. 49	S.L. 48	S.L. 47	S.L. 46	S.L. 45	S.L. 44
LEVEL 3	S.L. 29	HALL COMMON	S.L. 28	S.L. 25	S.L. 24	S.L. 23	S.L. 22	S.L. 21	S.L. 20
LEVEL 4	S.L. 8	HALL COMMON	S.L. 7	S.L. 6	S.L. 5	S.L. 4	S.L. 3	S.L. 2	S.L. 1
PARKING COMMON									
PARKING COMMON									
PARKING COMMON									
ELECTRICAL ROOM									
PARKING COMMON									

S-8522-17
NOVEMBER 18, 1993

S-6522-18 NOVEMBER 18, 1983



SECTION D - D

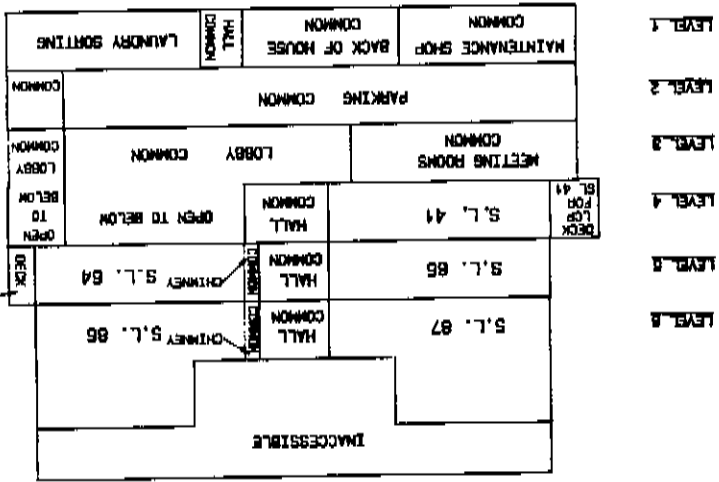


SECTION C - C

**PHASE 1:
SECTIONS**

Sheet 18 of 22 Sheets.
STRATA PLAN
LMS.1151

S-6522-19 NOVEMBER 18, 1983



SECTION I - I

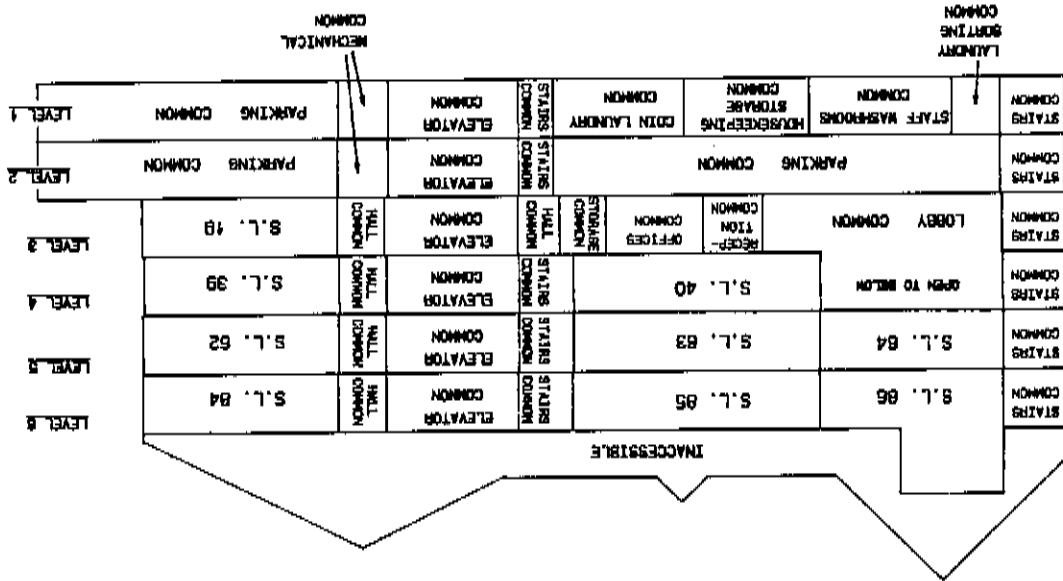
LEVEL 1	PARKING COMMON		PARKING COMMON		PARKING COMMON		PARKING COMMON		PARKING COMMON	
LEVEL 2	PARKING COMMON		PARKING COMMON		PARKING COMMON		PARKING COMMON		PARKING COMMON	
LEVEL 3	S.L. 2	S.L. 1	WASHROOMS COMMON	WASHROOMS COMMON	LOBBY COMMON	LOBBY COMMON	LOBBY COMMON	LOBBY COMMON	LOBBY COMMON	LOBBY COMMON
LEVEL 4	S.L. 21	S.L. 20	S.L. 43 ELECTRICAL	MECHANICAL	HALL	HALL	HALL	HALL	HALL	HALL
LEVEL 5	S.L. 46	S.L. 44	S.L. 67 ELECTRICAL	MECHANICAL	HALL	HALL	HALL	HALL	HALL	HALL
LEVEL 6	S.L. 69	S.L. 68	S.L. 69 ELECTRICAL	MECHANICAL	HALL	HALL	HALL	HALL	HALL	HALL
INACCESSIBLE										

SECTION F - F

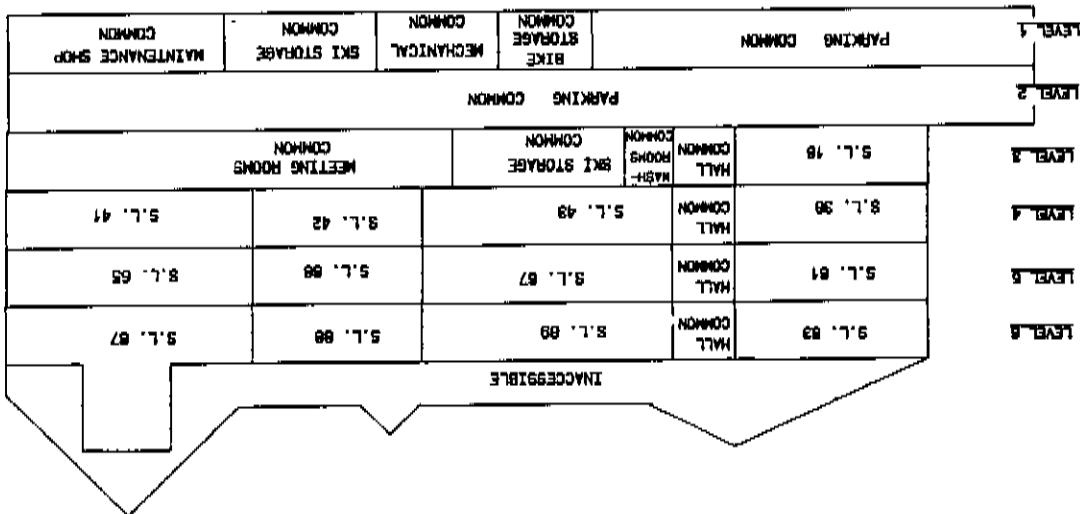
LEVEL 1	PARKING COMMON		PARKING COMMON		PARKING COMMON		PARKING COMMON		PARKING COMMON	
LEVEL 2	PARKING COMMON		PARKING COMMON		PARKING COMMON		PARKING COMMON		PARKING COMMON	
LEVEL 3	S.L. 18	S.L. 19	S.L. 48	S.L. 49	S.L. 47	S.L. 47	S.L. 16	S.L. 16	S.L. 16	S.L. 16
LEVEL 4	S.L. 39	S.L. 38	S.L. 38	S.L. 38	S.L. 37	S.L. 37	S.L. 36	S.L. 36	S.L. 36	S.L. 36
LEVEL 5	S.L. 62	S.L. 61	S.L. 61	S.L. 61	S.L. 60	S.L. 60	S.L. 59	S.L. 59	S.L. 59	S.L. 59
LEVEL 6	S.L. 84	S.L. 83	S.L. 83	S.L. 83	S.L. 82	S.L. 82	S.L. 81	S.L. 81	S.L. 81	S.L. 81
INACCESSIBLE										

SECTION E - E

S-5522-20 NOVEMBER 18, 1993
B.M.J.



SECTION H - H



SECTION G - G

Sheet 20 of 22 Sheets.
 STRATA PLAN
 LMS. 1151

PHASE 1:
SECTIONS

NOVEMBER 18, 1899 S-8522-22 Y.M.D.

continued sheet 229

NUMBER	DATE	NATURE AND PARTICULARS
		REGISTRATION
		DOCUMENTS
		This land may be subjected to sections 14 to 22 of the Resort Municipality of Whistler Act and the Whistler Resort Association filed under the Societies Act, see DF 87899 (modified by DF 8610616)
G2520	11.01.1979	Land Use Contract - Resort Municipality of Whistler - Municipal Act 5.703M modified by G677455 - Inter Alia
G677455	13.07.1988	Land Use Contract - modification of G2520 - Inter Alia
G2150719	04.11.1989	Statutory Right of Way - Resort Municipality of Whistler - Part in Explanatory Plan 19756 - Inter Alia
GC150721	24.11.1989	Statutory Right of Way - Resort Municipality of Whistler - part in Explanatory Plan 19756
BG280584	05.08.1993	Government - Resort Municipality of Whistler - Land Title Act Section 215 - Inter Alia - modified by B1119937, B1298192
BG281195	06.08.1993	Government - Resort Municipality of Whistler - Land Title Act Section 215 - Inter Alia
BG443420	08.12.1993	Cancelled L. STASOVSKAJ and STOLTS & LTD Lease - Powder Property Management Ltd (inc. #345250) - part on plans LMP13837, LMP13838, LMP13839, LMP13840, LMP13841
BH12937	05.04.1994	Coenant - Modification of Bg280584 Land Title Act, section 215 - modified by BH298196 - Inter Alia
BH298196	11.08.1994	Coenant - modification of BG280584 Case B1119937 - L.T.M. section 215 - Inter Alia
BH335208	01.09.1994	Cancelled L. STASOVSKAJ and STOLTS & LTD Lease - Powder Property Management Ltd (inc. #345250) - part on plans LMP18847 and LMP18848
AT50477	20.02.1995	Cancelled L. STASOVSKAJ and STOLTS & LTD Lease - Powder Property Management Ltd (inc. #345250) part on plans LMP21823, LMP21824, LMP21825, LMP21826, LMP21827 and LMP21828

Sheet 22 of 22 Sheets.
 STRATA PLAN
 LMS. 1151

Common Property Sheet Closed 20/12/97

Search ALTO82 or BC Online for Current Information BC Reg. 76/95

LINDA I OSHEA - Registrar
 LINDA I OSHEA - Registrar
 Land Title Branch - Vancouver

DEALINGS AFFECTING THE COMMON PROPERTY

PHASE TWO STRATA PLAN OF

PART OF LOT 16 EXCEPT:

FIRSTLY : PHASE ONE STRATA

PLAN LMS1151, DISTRICT

LOT 3903, PLAN 22329.

Report Municipality of Whistler, B.C.

B.C.S. 8, 201, 016, 1

SCALE : 1 : 1000

ALL DISTANCES SHOWN ARE IN METRES

0 10 20 40

The address for the Service of Documents
is the "STRATA CORPORATION INC."
The "GENERAL SERVICE PLAN NO. LMS 1151"
C/O BLANCHARD ENGINEERING
P.O. BOX 98
WHISTLER B.C.
V8R 1B0

FOR STRATA CORP
MAIL ADDRESS
SEE STRATA PLAN
GENERAL INDEX

CLAYE ADDRESS INC.
4000 BREWSTER DRIVE
WHISTLER, B.C.
V8N 1B4
6H333L15
04445102 - Form E

Sept. 1994
New Westminster, B.C. this 12 day of
Registered in the Land Title Office at
Strata Plan LMS1151 deposited and
First Sheet - Sheet 4 of 13 Sheets.

STRATA PLAN
LMS 1151

PHASE TWO STRATA PLAN OF

PART OF LOT 16 EXCEPT:

FIRSTLY : PHASE ONE STRATA

PLAN LMS1151, DISTRICT

LOT 3903, PLAN 22329.

Report Municipality of Whistler, B.C.

B.C.S. 8, 201, 016, 1

SCALE : 1 : 1000

ALL DISTANCES SHOWN ARE IN METRES

0 10 20 40

The address for the Service of Documents
is the "STRATA CORPORATION INC."
The "GENERAL SERVICE PLAN NO. LMS 1151"
C/O BLANCHARD ENGINEERING
P.O. BOX 98
WHISTLER B.C.
V8R 1B0

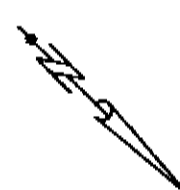
FOR STRATA CORP
MAIL ADDRESS
SEE STRATA PLAN
GENERAL INDEX

CLAYE ADDRESS INC.
4000 BREWSTER DRIVE
WHISTLER, B.C.
V8N 1B4
6H333L15
04445102 - Form E

Sept. 1994
New Westminster, B.C. this 12 day of
Registered in the Land Title Office at
Strata Plan LMS1151 deposited and
First Sheet - Sheet 4 of 13 Sheets.

STRATA PLAN
LMS 1151

LEGEND.
Boundaries are astronomic and are derived
from Plan 22329
Faded Placed
S.L. or S. Denotes "Strata Lot"
C Denotes "Common Property"
L.C.P. or LCP Denotes "Limited Common Property"
T. or T. Denotes "Part" or "Part of"



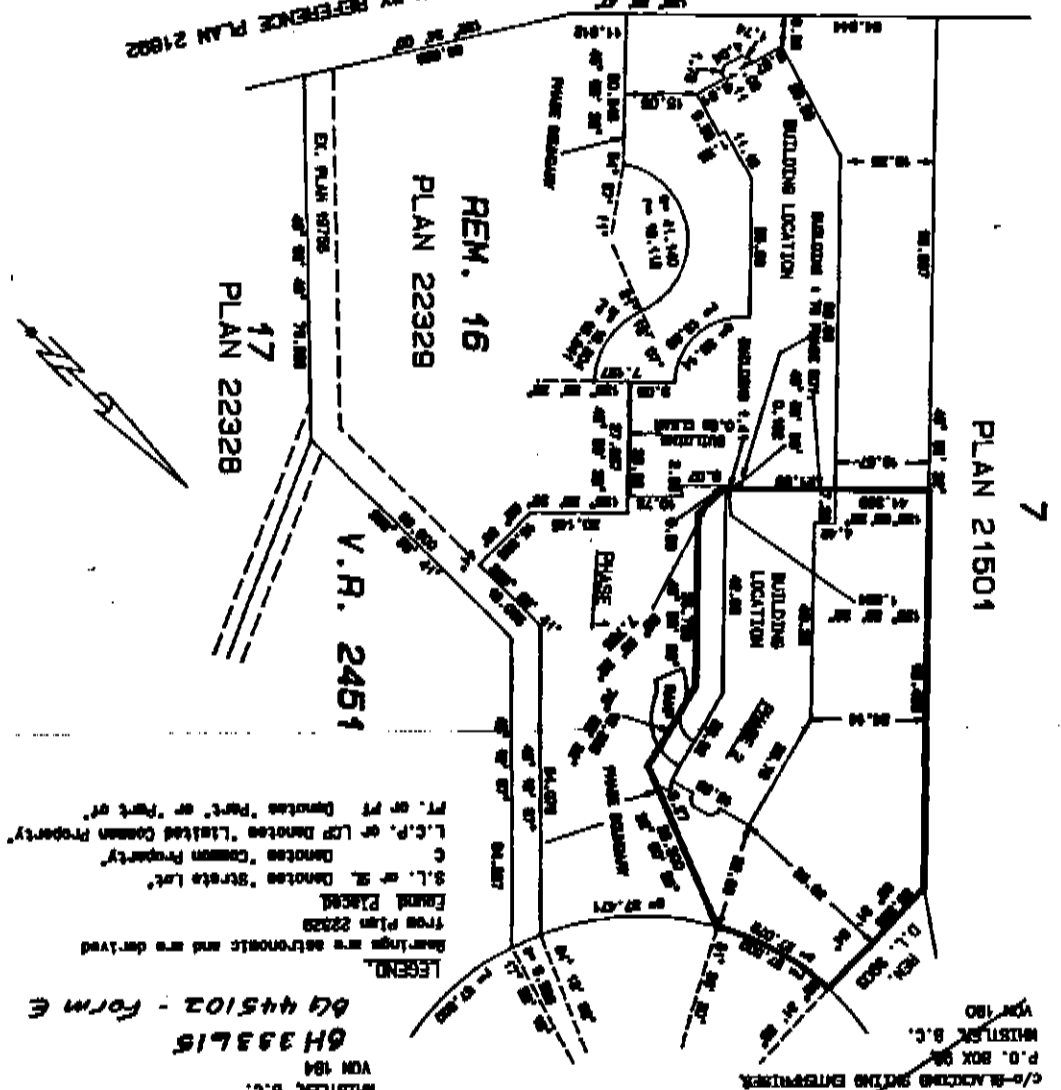
RETURNED TO CROWN BY REFERENCE PLAN 21501

I, S.A. HODGKINS, of Whistler, B.C.,
British Columbia Land Surveyor, having certified
that the buildings erected on the parcel
described above are really within the strata
boundary of that parcel, dated at Whistler, B.C.
on this 12th day of July, 1994
S.A.H.

THIS PLAN LIES WITHIN THE
"WHISTLER-DISTRICT" REGIONAL DISTRICT

HERMAN, BURNBY & COE,
PROFESSIONAL LAND SURVEYORS
VANCOUVER AND WHISTLER, B.C.

(J-23229) S-5808-1



July 12, 1994
 S-8608-2

LOT NO.	SHEET NO.	Schedule of Unit encumbrance	Schedule of Interest upon destruction	Schedule of Voting Rights
90	11	552	312	1
91	11	541	312	1
92	11	537	316	1
93	11, 13	854	450	1
94	11, 13	731	430	1
95	11	728	430	1
96	11	535	342	1
97	11, 12	536	348	1
98	12, 13	532	358	1
99	12, 13	520	322	1
100	12, 13	729	410	1
101	12, 13	536	334	1
102	12	537	330	1
103	12	534	326	1
104	12	536	322	1
105	12	540	314	1
106	11, 12	553	298	1
107	11	551	314	1
108	11	543	316	1
109	11	535	320	1
110	11, 13	852	460	1
111	11, 13	730	440	1
112	11	733	440	1
113	11	534	352	1
114	11, 12	535	356	1
115	12, 13	530	378	1
116	12, 13	520	378	1
117	12, 13	732	430	1
118	12, 13	534	350	1
119	12	535	342	1
120	12	535	338	1
121	12	534	328	1
122	12	539	322	1
123	11, 12	550	308	1
124	11	552	322	1
125	11	542	320	1
126	11	534	324	1
127	11, 13	852	470	1
128	11, 13	732	450	1
129	11	731	454	1

PHASE 2.
 STRATA PLAN
 LMS. 1151
 CONDOMINIUM ACT
 Second Sheet: Sheet 2 of 13 Sheets.
 FORM 1
 FORM 2
 FORM 3

S-6609-3
 JULY 12, 1994
 LMS

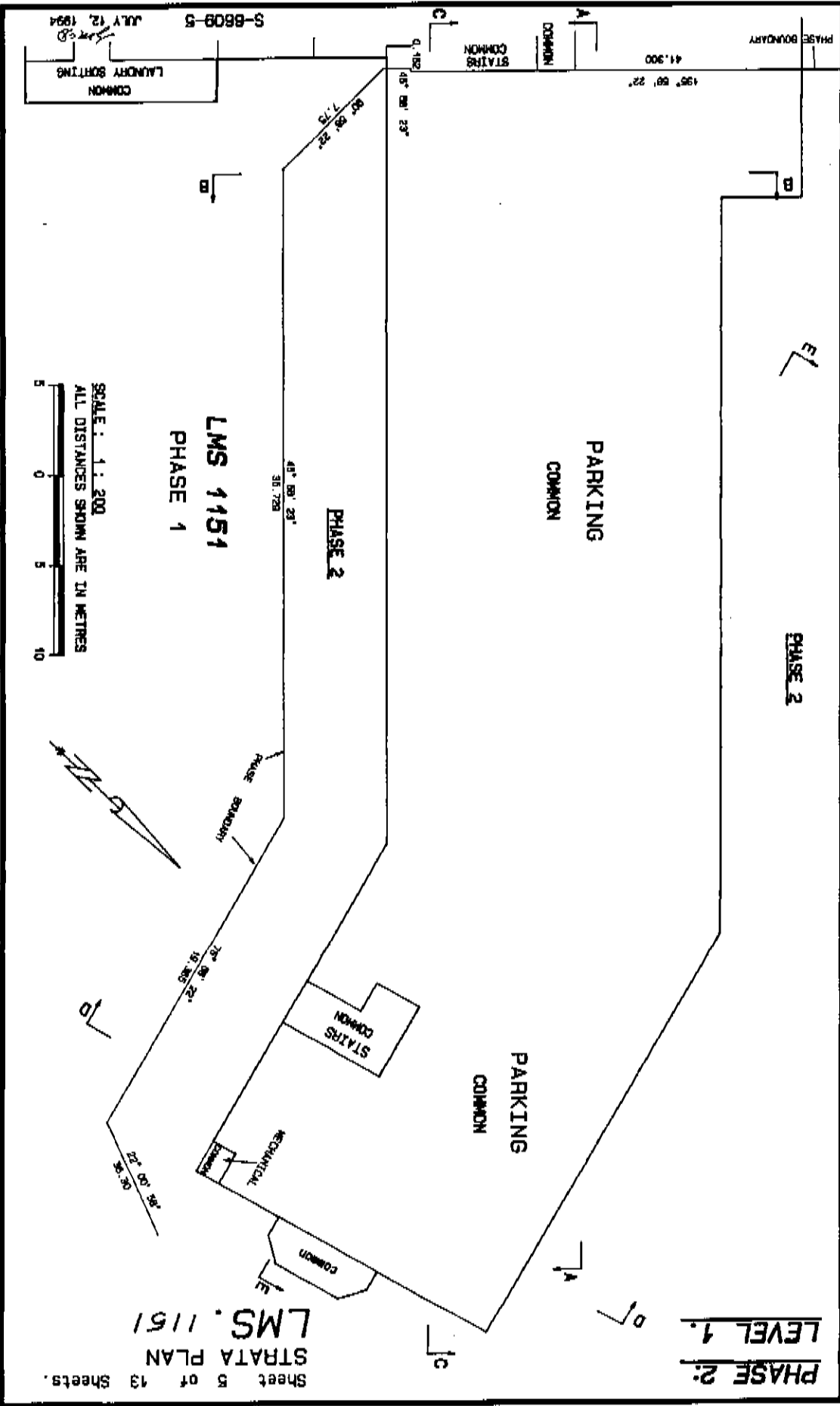
LOT NO.	SHEET NO.	Schedule of Unit entitlement	Schedule of Interest Upon Destruction	Schedule of Voting Rights
130	11	535	358	4
131	11, 12	532	390	4
132	12, 13	670	458	4
133	12, 13	729	458	4
134	12, 13	535	358	4
135	12	533	346	4
136	12	534	342	4
137	12	534	330	4
138	12	541	326	4
139	11, 12	552	314	4
140	11	552	334	4
141	11	540	338	4
141	11	534	342	4
142	11	852	490	4
143	11, 13	731	468	4
144	11, 13	732	482	4
145	11	964	590	4
146	11, 12	738	490	4
147	12, 13	534	378	4
148	12, 13	533	362	4
149	12	535	358	4
150	12	534	352	4
151	12	538	342	4
152	12	551	326	4
153	11, 12	38560	23794	64
TOTALS				

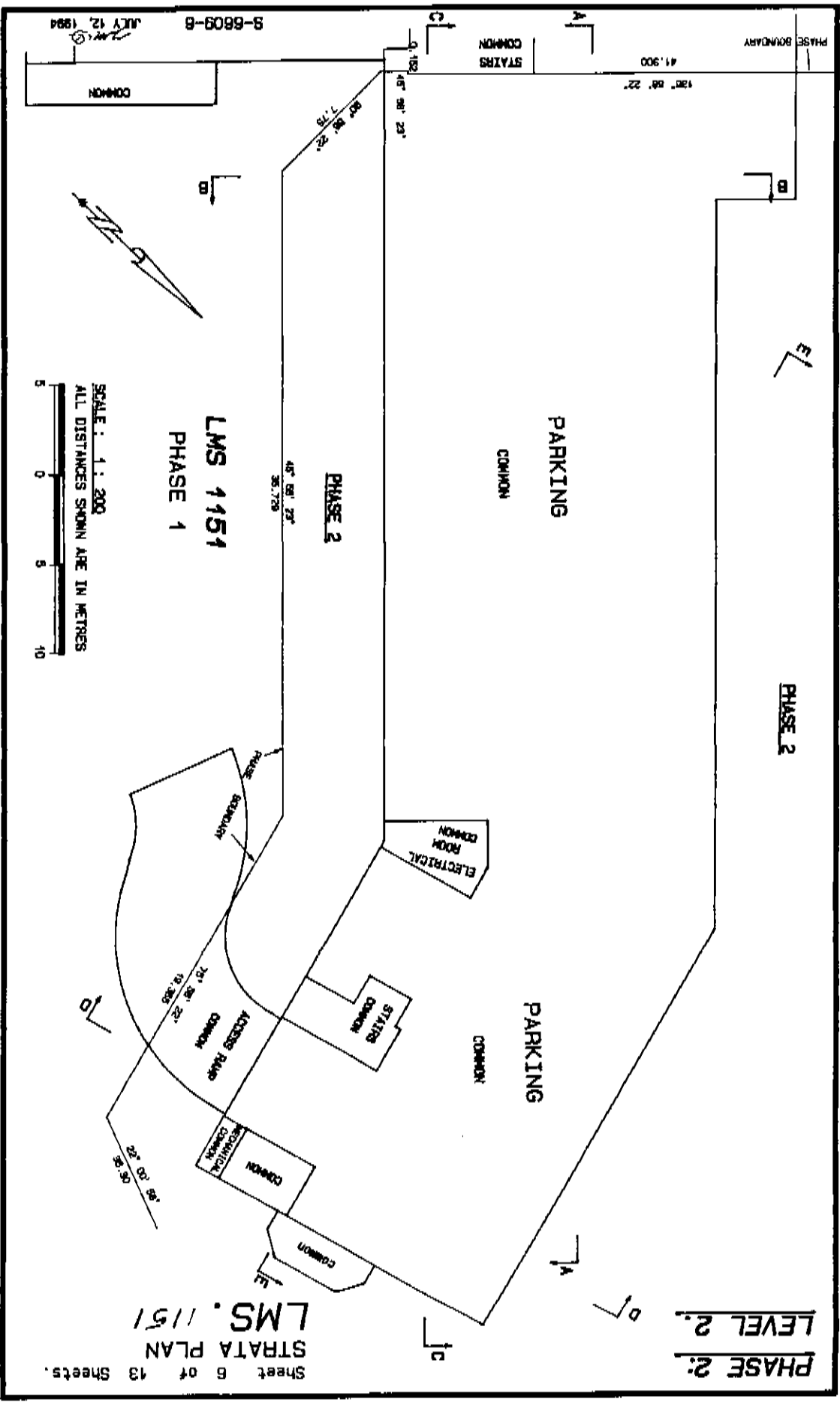
CONDOMINIUM ACT

PHASE 2.

STRATA PLAN
 LMS. 1151

Second Sheet: Sheet 3 of 13 Sheets.



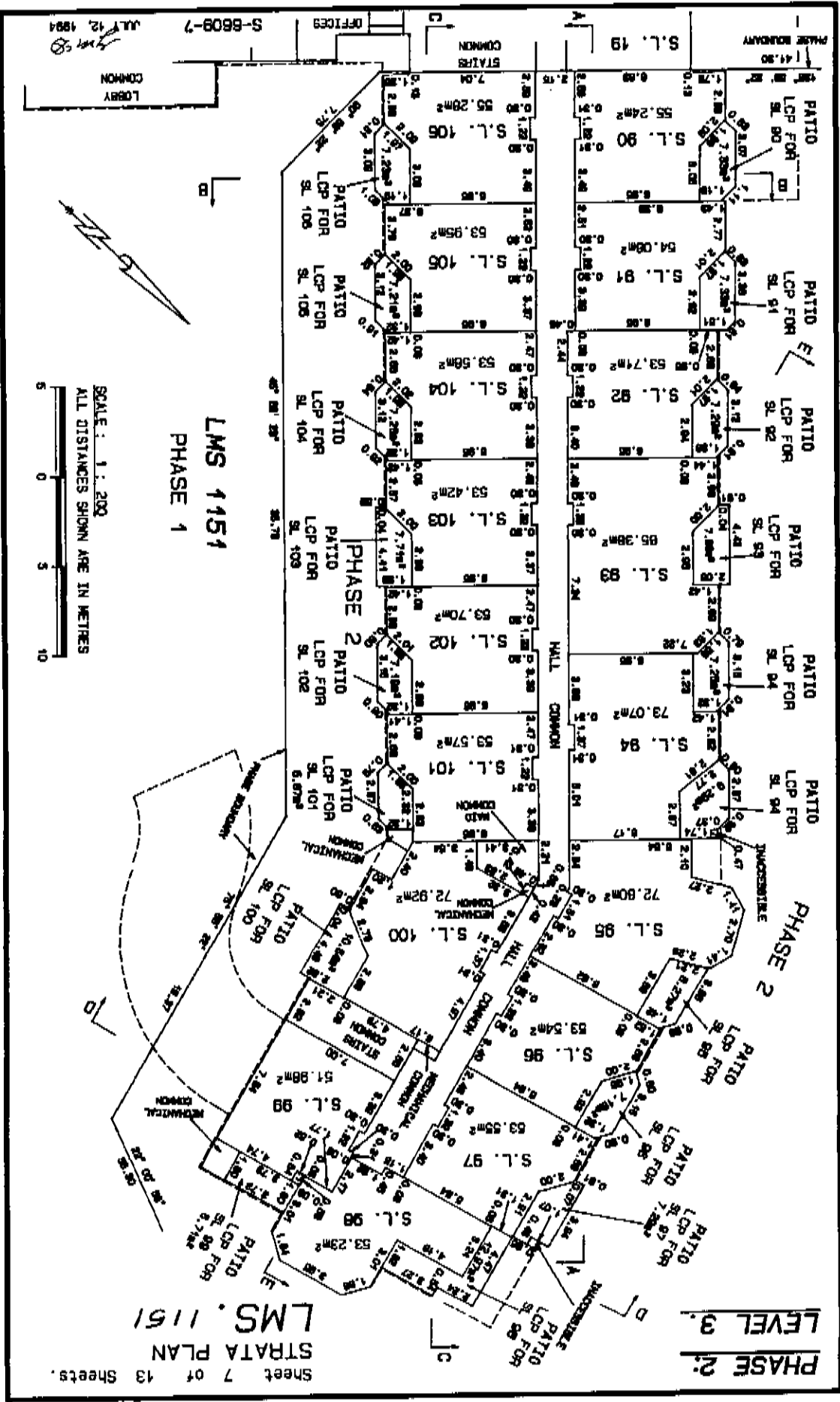


5-6609-8
JULY 12, 1994

SCALE : 1 : 200
 ALL DISTANCES SHOWN ARE IN METRES

Sheet 6 of 13 Sheets.
 STRATA PLAN
 LMS. 1151

PHASE 2:
 LEVEL 2.



LOBBY
COMMON
OFFICES
S-8609-7
JULY 12, 1994
[Signature]

LMS 1151
PHASE 1

SCALE: 1:200
ALL DISTANCES SHOWN ARE IN METRES

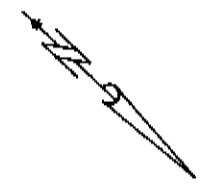
5 0 5 10

STRATA PLAN
LMS. 1151
Sheet 7 of 13 Sheets.

PHASE 2.
LEVEL 3.

5-8609-B
JULY 12, 1994
S.M.B.

SCALE: 1:200
ALL DISTANCES SHOWN ARE IN METRES



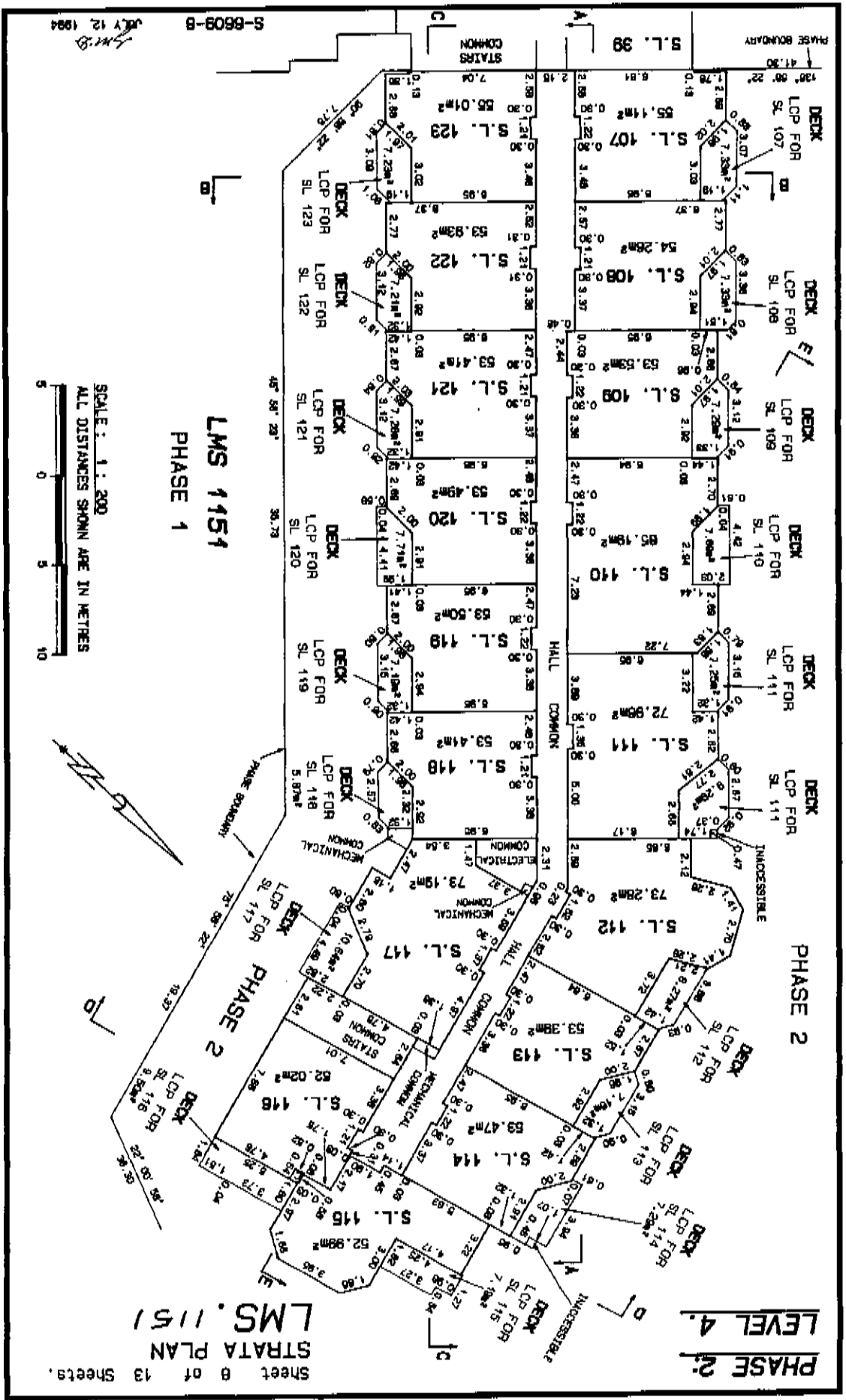
Sheet 8 of 13 Sheets.

STRATA PLAN
LMS. 1151

LMS 1151
PHASE 1

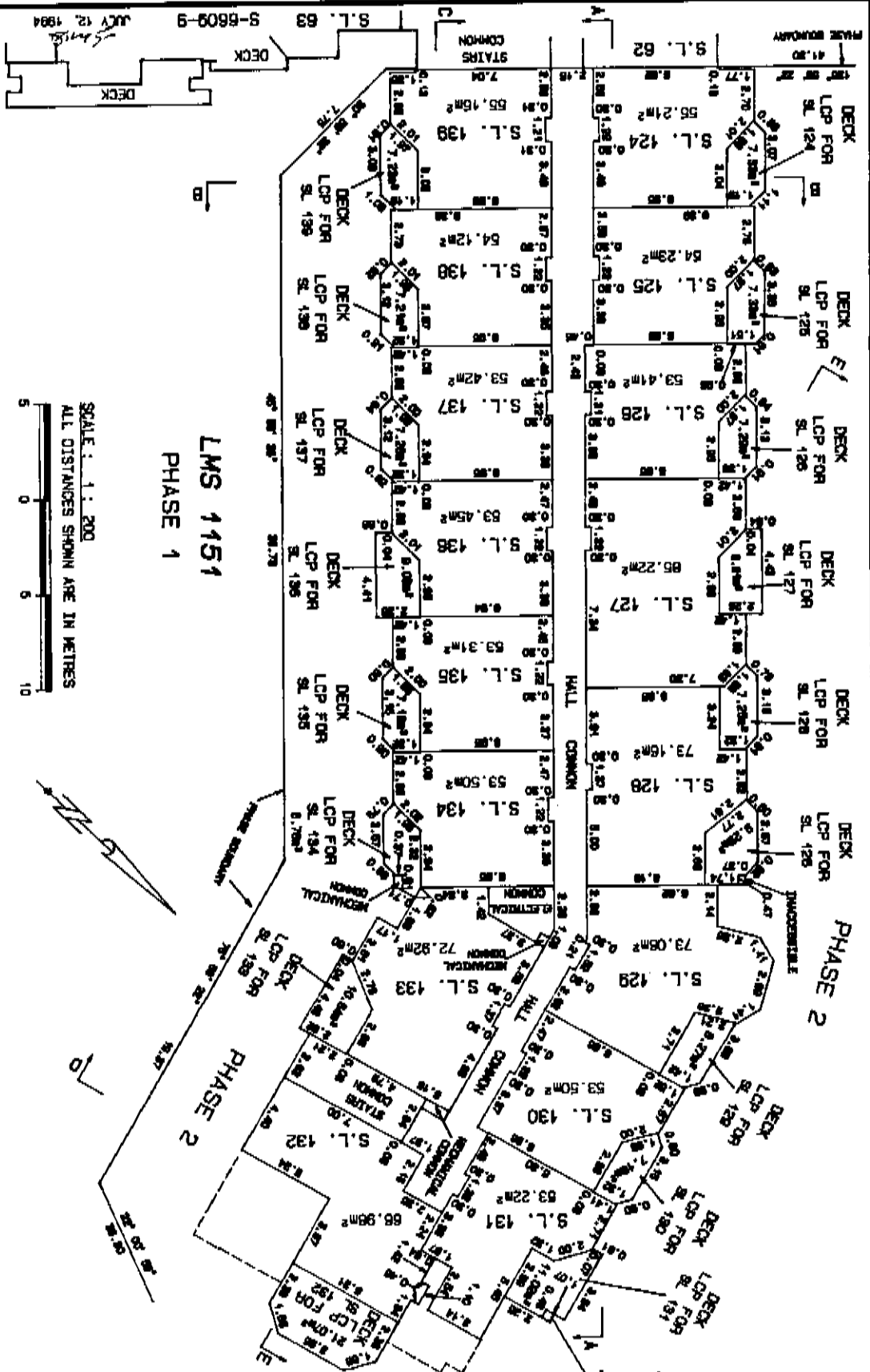
PHASE 2

PHASE 2:
LEVEL 4.

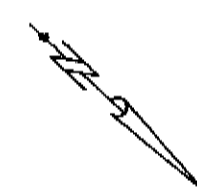


Sheet 9 of 13 Sheets
STRATA PLAN
LMS. 1151

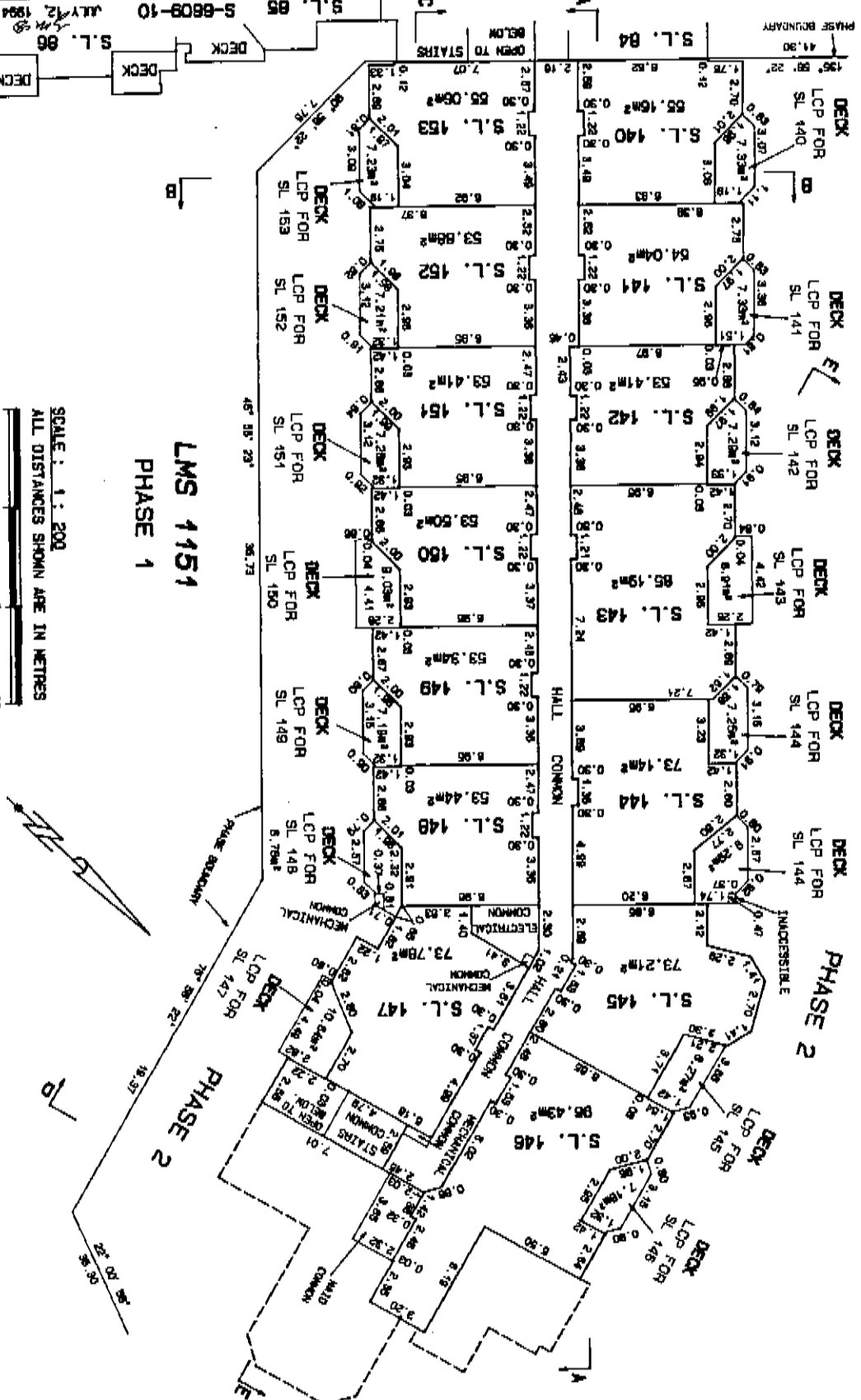
PHASE 2:
LEVEL 5.



SCALE: 1:200
ALL DISTANCES SHOWN ARE IN METRES



JULY 12, 1994
S. Smith



SCALE: 1:200
 ALL DISTANCES SHOWN ARE IN METRES

PHASE 2:
 LEVEL 5.
 STRATA PLAN
 LMS. 1151

SECTION A - A

LEVEL 6		DECK LCP FOR BL 148 PT. S.L. 146	S.L. 145	S.L. 144	S.L. 143	S.L. 142	S.L. 141	S.L. 140	S.L. 84
LEVEL 5		DECK LCP FOR BL 130 S.L. 130	S.L. 128	S.L. 128	S.L. 127	S.L. 126	S.L. 125	S.L. 124	S.L. 82
LEVEL 4		DECK LCP FOR BL 113 S.L. 113	S.L. 112	S.L. 111	S.L. 110	S.L. 108	S.L. 108	S.L. 107	S.L. 39
LEVEL 3		PATIO LCP FOR BL 98 S.L. 98	S.L. 98	S.L. 94	S.L. 93	S.L. 92	S.L. 91	S.L. 90	S.L. 19
LEVEL 2		PARKING COMMON							
LEVEL 1									

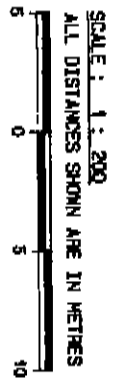
INACCESSIBLE

SECTION B - B

LEVEL 6		DECK LCP FOR BL 140	S.L. 140	INACCESSIBLE	S.L. 153
LEVEL 5		DECK LCP FOR BL 124	S.L. 124	INACCESSIBLE	S.L. 139
LEVEL 4		DECK LCP FOR BL 107	S.L. 107	INACCESSIBLE	S.L. 123
LEVEL 3		PATIO LCP FOR BL 90	S.L. 90	INACCESSIBLE	S.L. 108
LEVEL 2		PARKING COMMON			
LEVEL 1		PARKING COMMON			

INACCESSIBLE

PHASE BOUNDARY
PHASE ONE

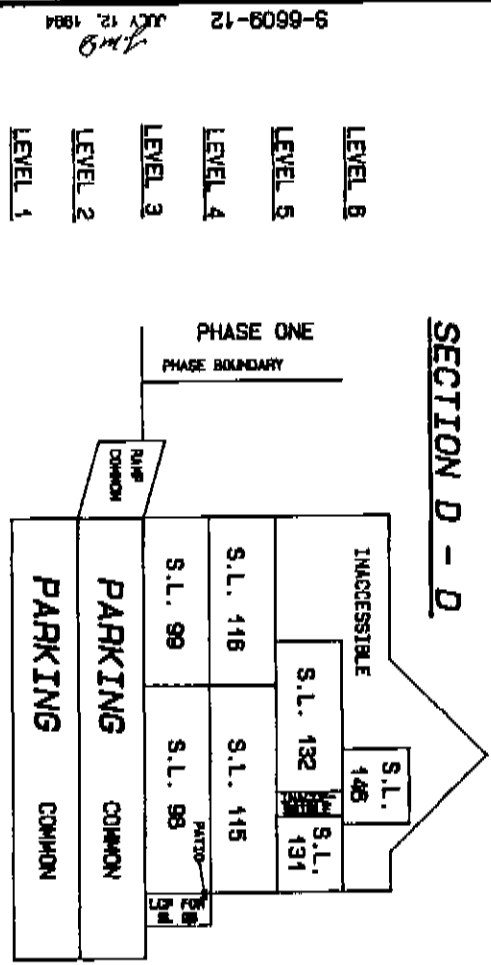


S-6609-11
JULY 12, 1994

PHASE 2:
SECTIONS:

STRATA PLAN
LMS. 1151
Sheet 11 of 13 Sheets.

SECTION C - C											
PHASE ONE											
LEVEL 6	STAIRS COMMON	S.L. 153	S.L. 152	S.L. 151	S.L. 150	S.L. 149	S.L. 148	S.L. 147	MECHANICAL		HALL COMMON
LEVEL 5	STAIRS COMMON	S.L. 138	S.L. 138	S.L. 137	S.L. 136	S.L. 135	S.L. 134	S.L. 133	MECHANICAL		HALL COMMON
LEVEL 4	STAIRS COMMON	S.L. 123	S.L. 122	S.L. 121	S.L. 120	S.L. 119	S.L. 118	S.L. 117	MECHANICAL		HALL COMMON
LEVEL 3	STAIRS COMMON	S.L. 106	S.L. 106	S.L. 104	S.L. 103	S.L. 102	S.L. 101	S.L. 100	MECHANICAL		HALL COMMON
LEVEL 2	PARKING COMMON										
LEVEL 1	PARKING COMMON										



SCALE: 1:200
 ALL DISTANCES SHOWN ARE IN METRES

SECTIONS:
 PHASE 2:

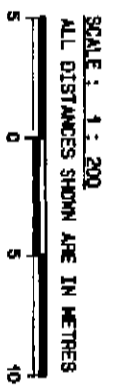
LMS. 1151
 STRATA PLAN
 Sheet 12 of 13 Sheets.

9-6609-12
 JULY 12, 1994
 JMB

SECTION E - E

UNACCESSIBLE

<u>LEVEL 6</u>	S.L. 143	S.L. 144	HALL COMMON	S.L. 148	ELEC-TRICAL COMMON	S.L. 147	STAIRS COMMON	
<u>LEVEL 5</u>	S.L. 127	S.L. 128	HALL COMMON	S.L. 134	ELEC-TRICAL COMMON	S.L. 139	STAIRS COMMON	DECK LOP FOR RL 132
<u>LEVEL 4</u>	S.L. 110	S.L. 111	HALL COMMON	S.L. 118	ELEC-TRICAL COMMON	S.L. 117	STAIRS COMMON	S.L. 116
<u>LEVEL 3</u>	S.L. 93	S.L. 94	HALL COMMON	S.L. 101	MAID COMMON	S.L. 100	STAIRS COMMON	S.L. 98
<u>LEVEL 2</u>	PARKING COMMON							
<u>LEVEL 1</u>	PARKING COMMON							



S-6609-13 JULY 12, 1994

PHASE THREE STRATA PLAN OF

PART OF LOT 16 EXCEPT: FIRSTLY:

PHASE ONE STRATA PLAN LMS 1151;

SECONDLY: PHASE TWO STRATA PLAN

LMS 1151; D.L. 3903, PLAN 22329.

Resort Municipality of Whistler, B.C.

B.C.S.S. 821, 016.1

First Sheet - Sheet 1 of 20 Sheets.

STRATA PLAN

LMS 1151

DT54845

Strata Plan LMS 1151 deposited and

registered in the Land Title Office at

New Westminster, B.C. this 27th day of

Feb. 1985

[Signature]
Deputy Registrar

CLAY ADDRESS INC.
4800 GEARHEAD DRIVE
WHISTLER, B.C.
VAN 1B4

FORM C - 0645102

SCALE: 1:1000

ALL DISTANCES SHOWN ARE IN METRES

0 10 20 40

The address for the Service of Documents

on the "BIRCHA CORPORATION" INC.

"THE GANGES" STRATA PLAN NO. LMS 1151

c/o BLACKCOMB REALTY ENTERPRISES

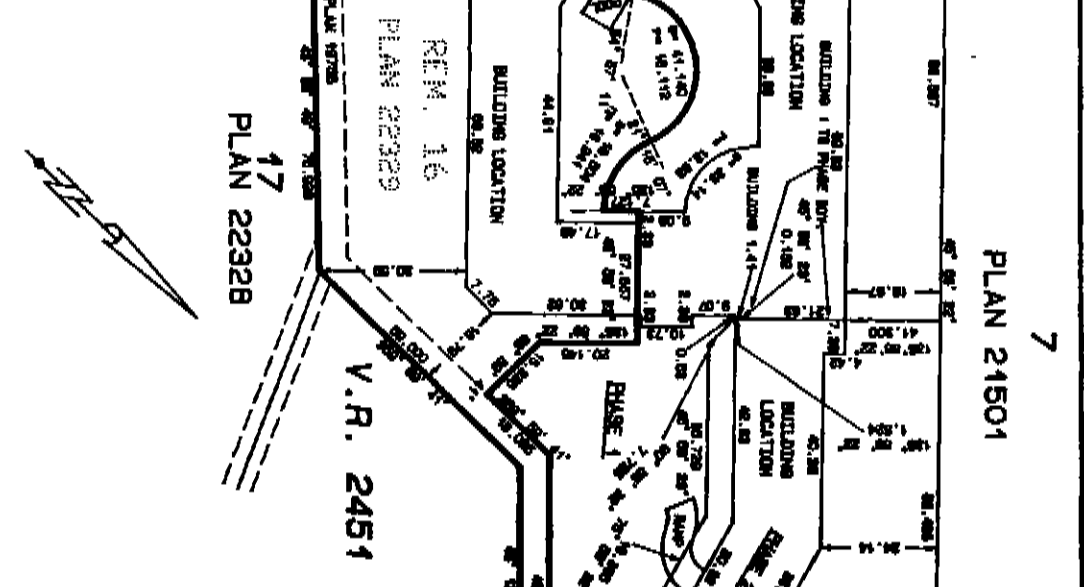
P.O. BOX 98

WHISTLER, B.C.

VAN 1B0

FOR STRATA COP
MAIL ADDRESS
SEE STRATA PLAN
GENERAL INDEX

LEGEND.
Bearings are astronomic and are derived
from plan 22329
Found Block
S.L. or R. Denotes "Strata Lot"
C. Denotes "Common Property"
L.C.P. or LCP Denotes "Limited Common Property"
P1. or P2 Denotes "Part" or "Part of"
N. Denotes "Mechanical and Common"



I, S.A. McNEILL, of Whistler, B.C.,
British Columbia Land Surveyor, hereby certify
that the buildings shown on the plan
described above are built within the exterior
boundaries of that parcel, more or less, as
shown on this day of January, 1985.
S.A. McNeill
B.C.L.S.
THIS PLAN LIES WITHIN THE
SQUAMISH-LILOOET REGIONAL DISTRICT
PROFESSIONAL LAND SURVEYORS
VANCOUVER AND WHISTLER, B.C.
(J-3838) S-7003-1
PB 1082 Pg 129 - PB 1078 Pg. 108-117 PB 1077 Pg 08-09

S-7003-2
 JANUARY 19, 1985
AMS

187	11, 17, 18	531	360
186	11, 18	728	483
185	11, 18	735	474
184	11, 18	543	350
183	11, 18	532	352
182	11, 18	854	522
181	12, 19	723	484
190	12, 19	728	486
189	12, 19, 20	517	425
188	12, 20	530	445
187	12, 20	531	384
186	12, 20	530	387
185	12, 20	812	526
184	12, 20	728	487
183	11, 18	787	484
182	11, 19	809	488
181	11, 18	734	477
180	11, 18, 19	527	343
179	11, 17, 19	728	467
178	11, 17, 18	529	324
177	11, 17	729	455
176	11, 17	541	332
175	9, 18	722	471
174	9, 18	737	464
173	9, 18	545	343
172	9, 18	535	344
171	9, 18	858	511
170	10, 19	733	474
169	10, 19	732	475
168	10, 19, 20	519	417
167	10, 20	529	437
166	10, 20	534	375
165	10, 20	535	359
164	10, 20	814	515
163	10, 20	726	477
162	9, 18	796	483
161	9, 19	809	477
160	9, 19	738	465
159	9, 18, 19	532	335
158	9, 17, 18	725	457
157	9, 17, 18	528	318
156	9, 17	725	445
155	7, 18	741	437
154	7, 17	538	315

LOT NO.	SHEET NO.	Schedule of LIMIT INTEREST	Schedule of Interest Upon Destruction	Schedule of Voting Rights
		FORM 1	FORM 2	FORM 3

CONDOMINIUM ACT

PHASE 3.

STATA PLAN

LMS. 1151

Second Sheet: Sheet 2 of 20 Sheets.

5-7003-3
 JANUARY 18, 1995
B. M. S.

LOT NO.	SHEET NO.	Schedule of Unit entitlement	Schedule of Interest Upon Destruction	Schedule of Voting Rights
198	13, 17	594	353	FORM 3
199	13, 17, 18	730	484	FORM 3
200	13, 17, 18, 19	532	339	FORM 3
201	13, 19	538	353	FORM 3
202	13, 19	729	490	FORM 3
203	13, 19	810	503	FORM 3
204	13, 19	796	509	FORM 3
205	13, 19	726	511	FORM 3
206	14, 20	812	541	FORM 3
207	14, 20	535	378	FORM 3
208	14, 20	530	393	FORM 3
209	14, 19, 20	670	555	FORM 3
210	14, 19, 20	732	500	FORM 3
211	14, 19	724	499	FORM 3
212	13, 18	853	539	FORM 3
213	13, 18	529	362	FORM 3
214	13, 18	543	361	FORM 3
215	13, 18	735	487	FORM 3
216	13, 18	729	493	FORM 3
217	13, 17, 18	531	386	FORM 3
218	15, 17, 18	534	360	FORM 3
219	15, 17, 18	733	510	FORM 3
220	15, 17, 19	536	374	FORM 3
221	15, 18, 19	734	520	FORM 3
222	15, 19	799	498	FORM 3
223	15, 19	796	498	FORM 3
224	15, 19	796	540	FORM 3
225	15, 20	728	530	FORM 3
226	15, 20	810	574	FORM 3
227	15, 20	868	894	FORM 3
228	15, 19	727	529	FORM 3
229	15, 19	728	527	FORM 3
230	15, 18	850	573	FORM 3
231	15, 18	533	384	FORM 3
232	15, 18	543	382	FORM 3
233	15, 18	738	517	FORM 3
TOTALS		53866	35856	80

Second Sheet: Sheet 3 of 20 Sheets.
 STRATA PLAN
LMS. 1151
PHASE 3.
 CONDOMINIUM ACT

JANUARY 13, 1995 S-7003-4

AS TO MORTGAGE B218967 AND MODIFICATIONS B24594 AND B212054 AND ASSIGNMENT OF RENTS B218968 AND MODIFICATIONS B24595 AND B212055	J.C. WEST, INC.	Authorized Signatory	<i>[Signature]</i>
AS TO MORTGAGES B1190268 AND B1955007, ASSIGNMENT OF RENTS B1190268 AND B1955008 AND PRIORITY AGREEMENTS B1190270, B1190271 AND B1955189, B2355184, B1967449 AND B1967450	LAURENTIAN BANK OF CANADA.	Authorized Signatory	<i>[Signature]</i>
AS TO LEASE 3350417	POWER PROPERTY MANAGEMENT LTD.	Authorized Signatory (Print Name) Ian McAuley	<i>[Signature]</i>
AS TO MORTGAGE B218967 AND MODIFICATIONS B24594 AND B212054 AND ASSIGNMENT OF RENTS B218968 AND MODIFICATIONS B24595 AND B212055	NIKKEN CANADA HOLDING LTD. (INC. NO. 334889)	Owner - Developer	<i>[Signature]</i>
AS TO MORTGAGE B218967 AND MODIFICATIONS B24594 AND B212054 AND ASSIGNMENT OF RENTS B218968 AND MODIFICATIONS B24595 AND B212055	WITNESS TO BOTH SIGNATURES ABOVE	Occupation of Witness	<i>[Signature]</i>
AS TO MORTGAGE B218967 AND MODIFICATIONS B24594 AND B212054 AND ASSIGNMENT OF RENTS B218968 AND MODIFICATIONS B24595 AND B212055	WITNESS TO BOTH SIGNATURES ABOVE	Occupation of Witness	<i>[Signature]</i>
AS TO MORTGAGE B218967 AND MODIFICATIONS B24594 AND B212054 AND ASSIGNMENT OF RENTS B218968 AND MODIFICATIONS B24595 AND B212055	WITNESS TO BOTH SIGNATURES ABOVE	Occupation of Witness	<i>[Signature]</i>
AS TO MORTGAGE B218967 AND MODIFICATIONS B24594 AND B212054 AND ASSIGNMENT OF RENTS B218968 AND MODIFICATIONS B24595 AND B212055	WITNESS TO BOTH SIGNATURES ABOVE	Occupation of Witness	<i>[Signature]</i>

STATUTORY DECLARATION

I/We the undersigned do solemnly declare that:

- I/We (as/are) the Owner/Developer or the duly authorized agent of the Owner/Developer
- The Strata Plan is for residential and commercial use.
- I/We make this solemn declaration conscientiously believing it to be and knowing that it is of the same force and effect as if made under oath.

Declared before me at Vancouver in the Province of British Columbia this 2nd day of January, A.D. 1995

[Signature]
A Notary Public in and for the Province of British Columbia *[Signature]*

Accepted as to Forms 1, 2 and 3 on the 30 day of Feb. 1995

[Signature]
Superintendent of Real Estate

CONDOMINIUM ACT

PHASE THREE

STRATA PLAN

LMS. 1151

Endorsement pursuant to section 48 (1) I hereby certify that the common facilities, underground parking facilities, to have been constructed in conjunction with this phase with phase Three according to Form E to the Act were constructed in conformity with this phase to have been constructed in conformity with this phase 15 day of Feb. 1995

Municipal Approving Officer for The Report Municipality of Whistler.

Approved as Phase III of a III phase Strata Plan under the Condominium Act dated this 1st day of Feb. 1995

Municipal Approving Officer for The Report Municipality of Whistler.

CERTIFICATE UNDER SECTION 8(1)

I, G.A. McDougall, a British Columbia Land Surveyor, hereby certify that the building shown in this Strata Plan has met, as of the 18th day of January, 1995, been previously occupied.

B.C.L.S.

Second Sheet - Sheet 4 of 20 Sheets.

Sheet 5 of 20 Sheets.
STRATA PLAN
LMS. 1151

PHASE 3.
LEVEL 1.

SCALE: 1:200
ALL DISTANCES SHOWN ARE IN METRES



PHASE BOUNDARY 135° 50' 22" 20.145

85° 50' 41" 15.358

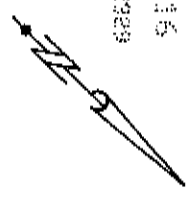
COMMON
PARKING
COMMON
STAIRS
COMMON
COMMON

PARKING
COMMON

STAIRS
COMMON
ELEVATOR

PHASE ONE
PLAN LMS 1151

REM. 15
PLAN 022829



CONTINUED ON
SHEET 6

CONTINUED
ON SHEET 6
S-7003-5 JANUARY 13, 1995

PARKING
COMMON

C
B

E
D

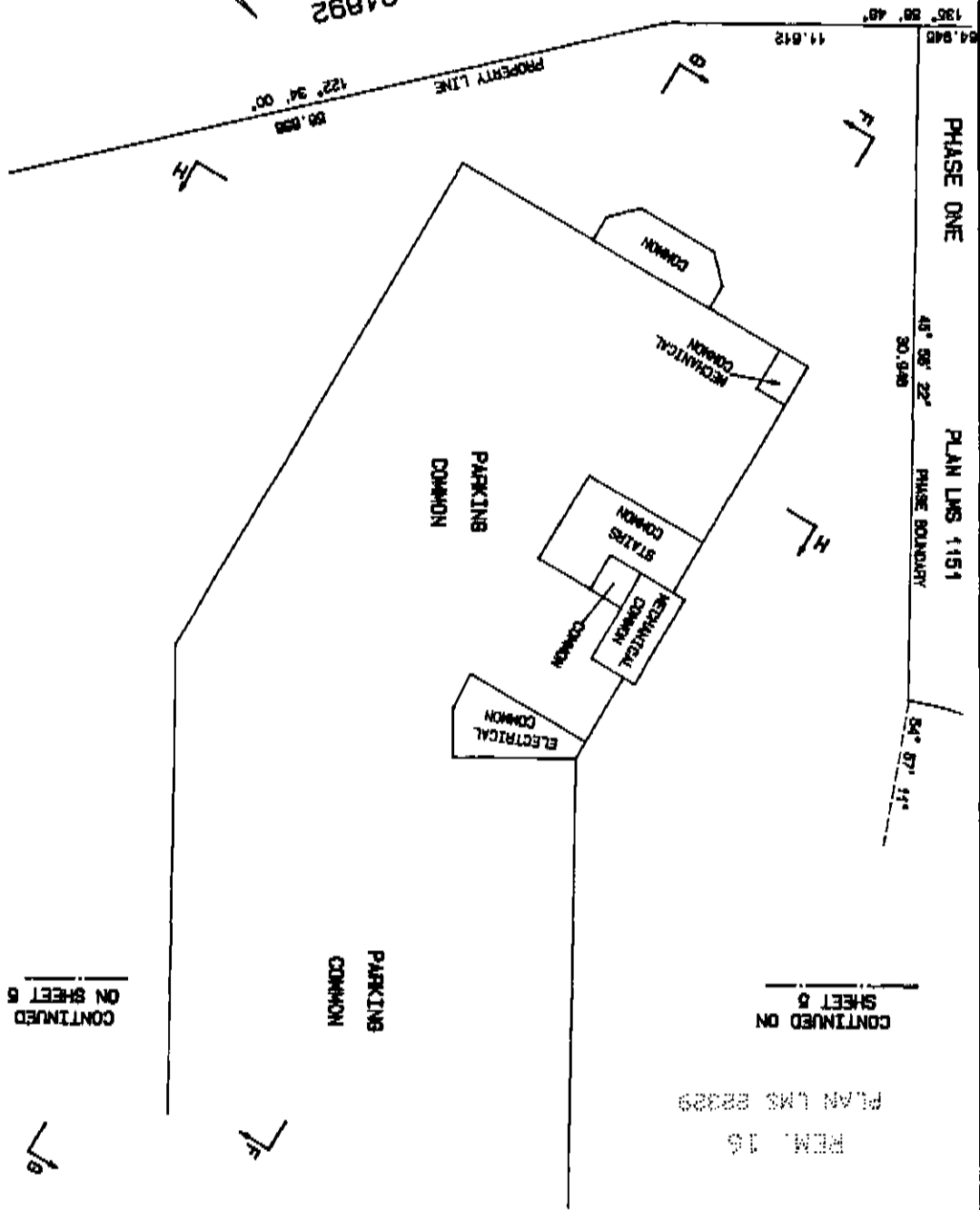
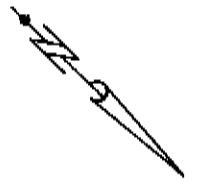
135° 50' 22" 7.127

121° 16' 07" 7.07

PHASE BOUNDARY
135° 50' 22" 15.358

9-7003-8 JANUARY 19, 1985

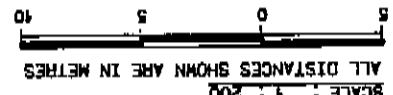
RETURNED TO CROWN BY REF. PLAN 21892



CONTINUED ON SHEET 5

CONTINUED ON SHEET 5

PLAN LMS 22329
REM. 16



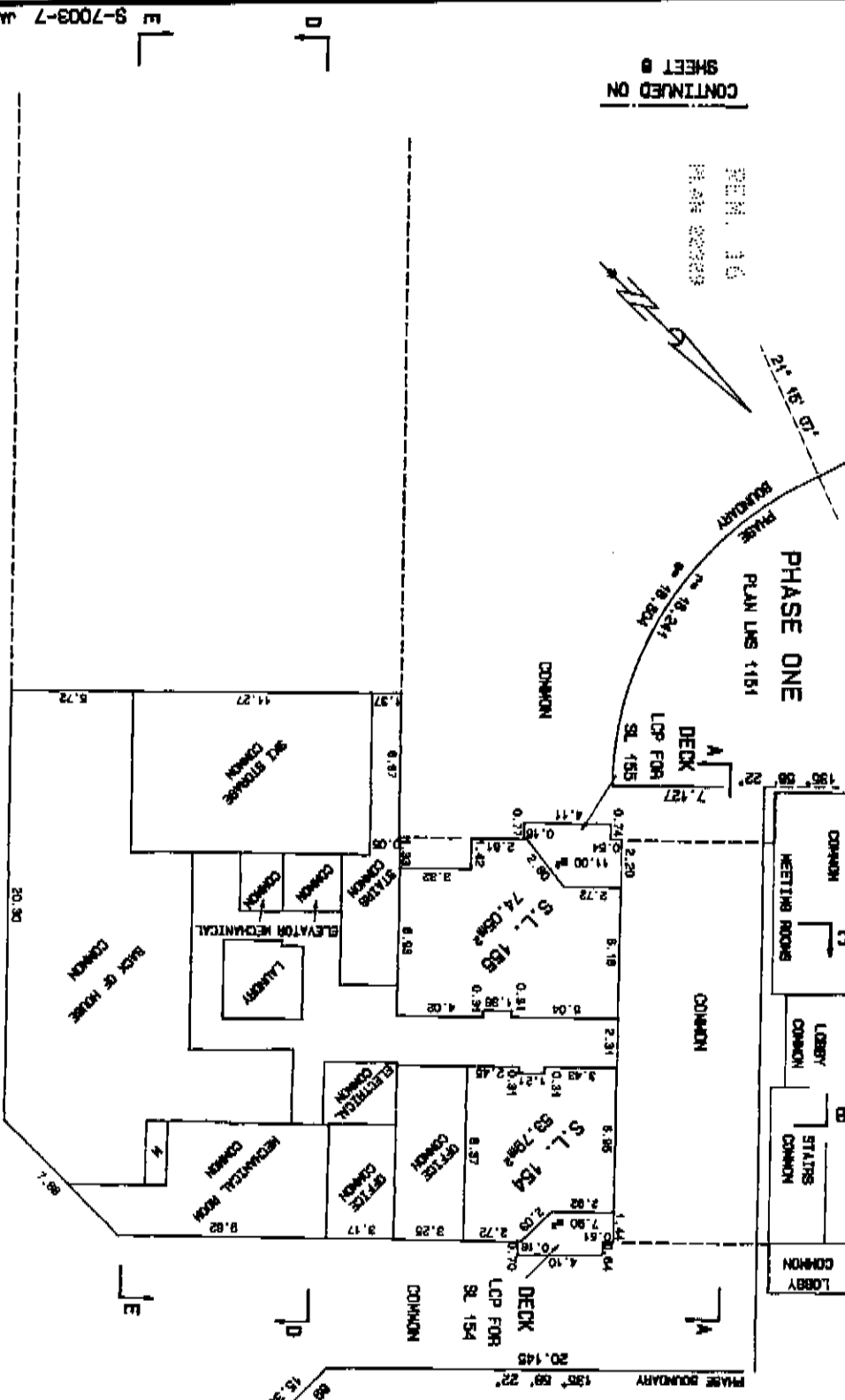
Sheet 6 of 20 Sheets
STRATA PLAN
LMS. 1151

PHASE 3:
LEVEL 1.

PHASE 3:
LEVEL 2.

Sheet 7 of 20 Sheets.
STRATA PLAN
LMS. 1151

SCALE : 1 : 200
ALL DISTANCES SHOWN ARE IN METRES



CONTINUED
ON SHEET 8
ON SHEET 8
9-7003-7 JANUARY 13, 1995
LMS

S-7003-8
JANUARY 13, 1994

RETURNED TO CROWN BY REF. PLAN 21892



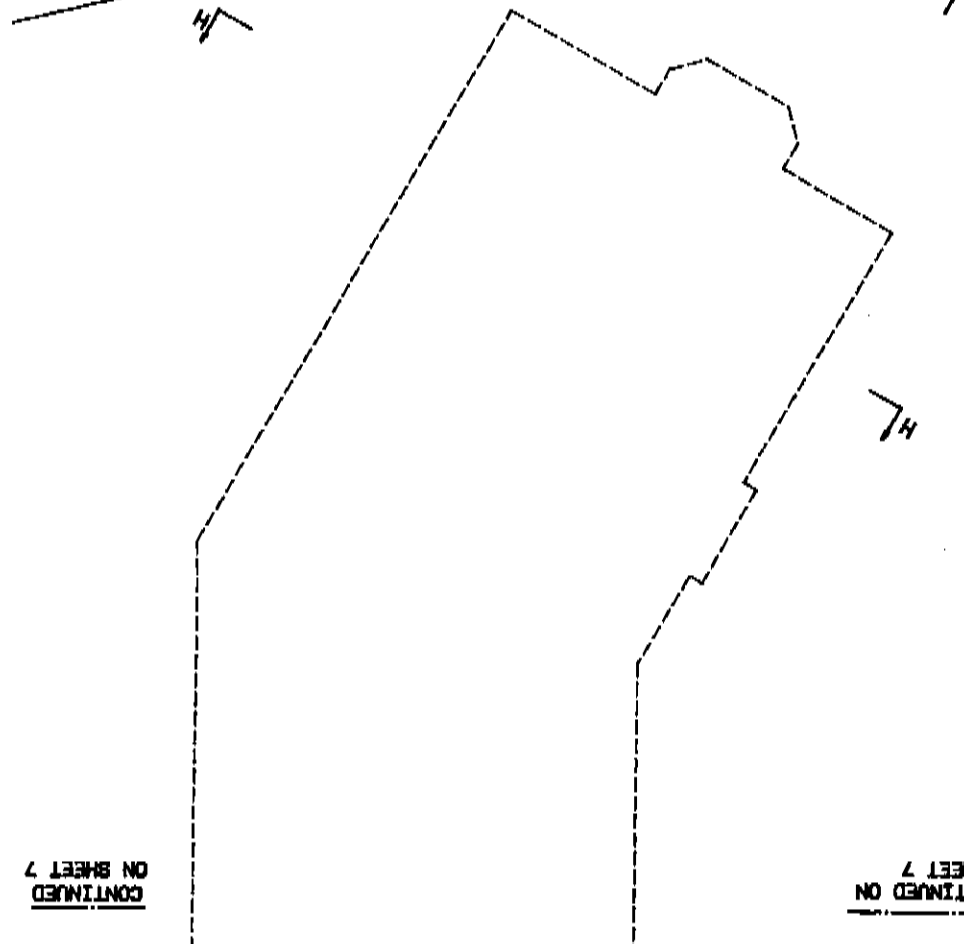
PHASE ONE

PLAN LMS 1151

45° 59' 22" 30.546

PHASE BOUNDARY

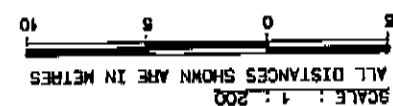
54° 07' 11"



CONTINUED ON SHEET 7

CONTINUED ON SHEET 7

PLAN LMS 28329
REM. 16



STRATA PLAN
LMS. 1151

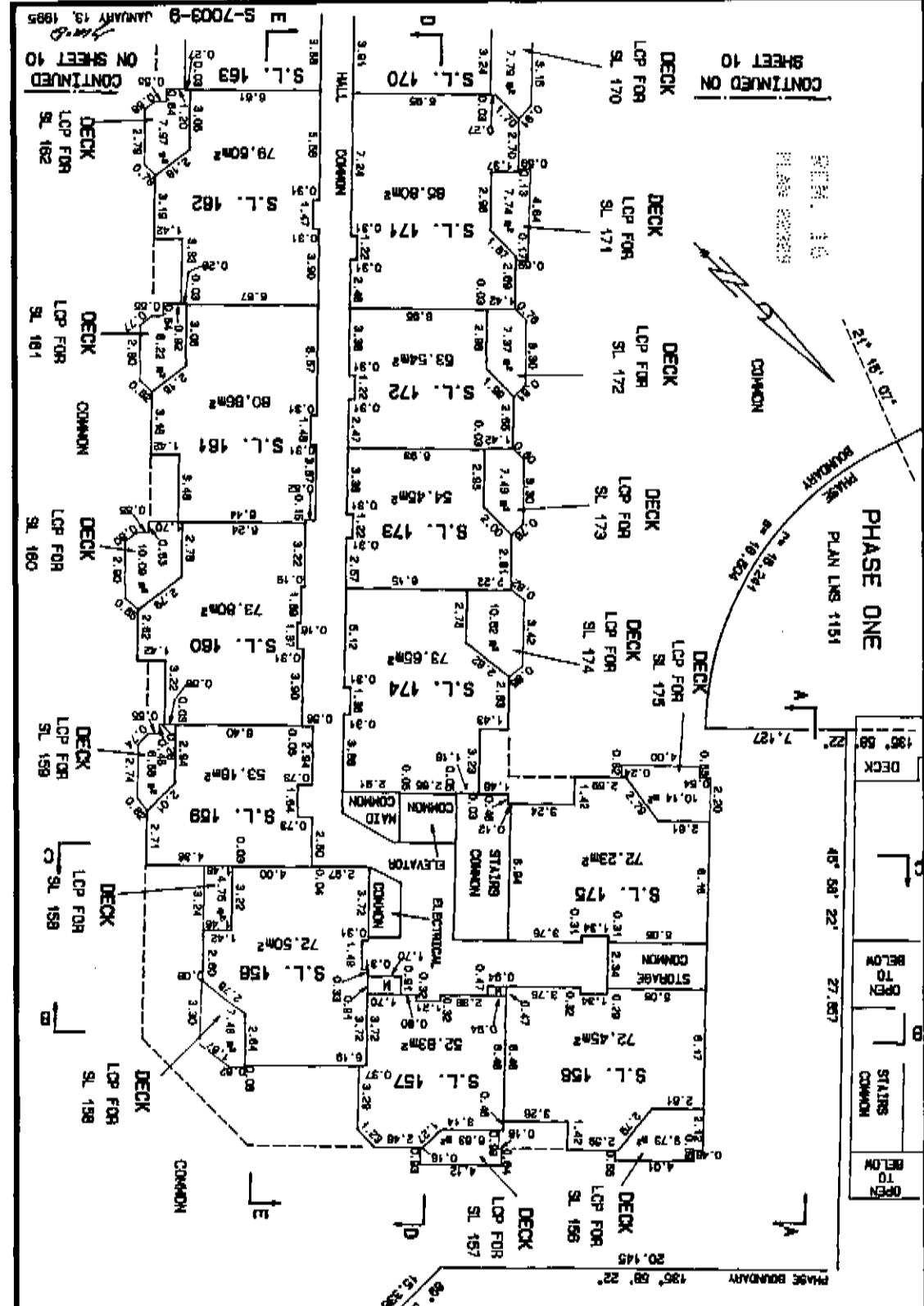
Sheet 8 of 20 Sheets.

PHASE 3:
LEVEL 2.

PHASE 3:
LEVEL 3.
 STRATA PLAN
 LMS. 1151

Sheet 9 of 20 Sheets.

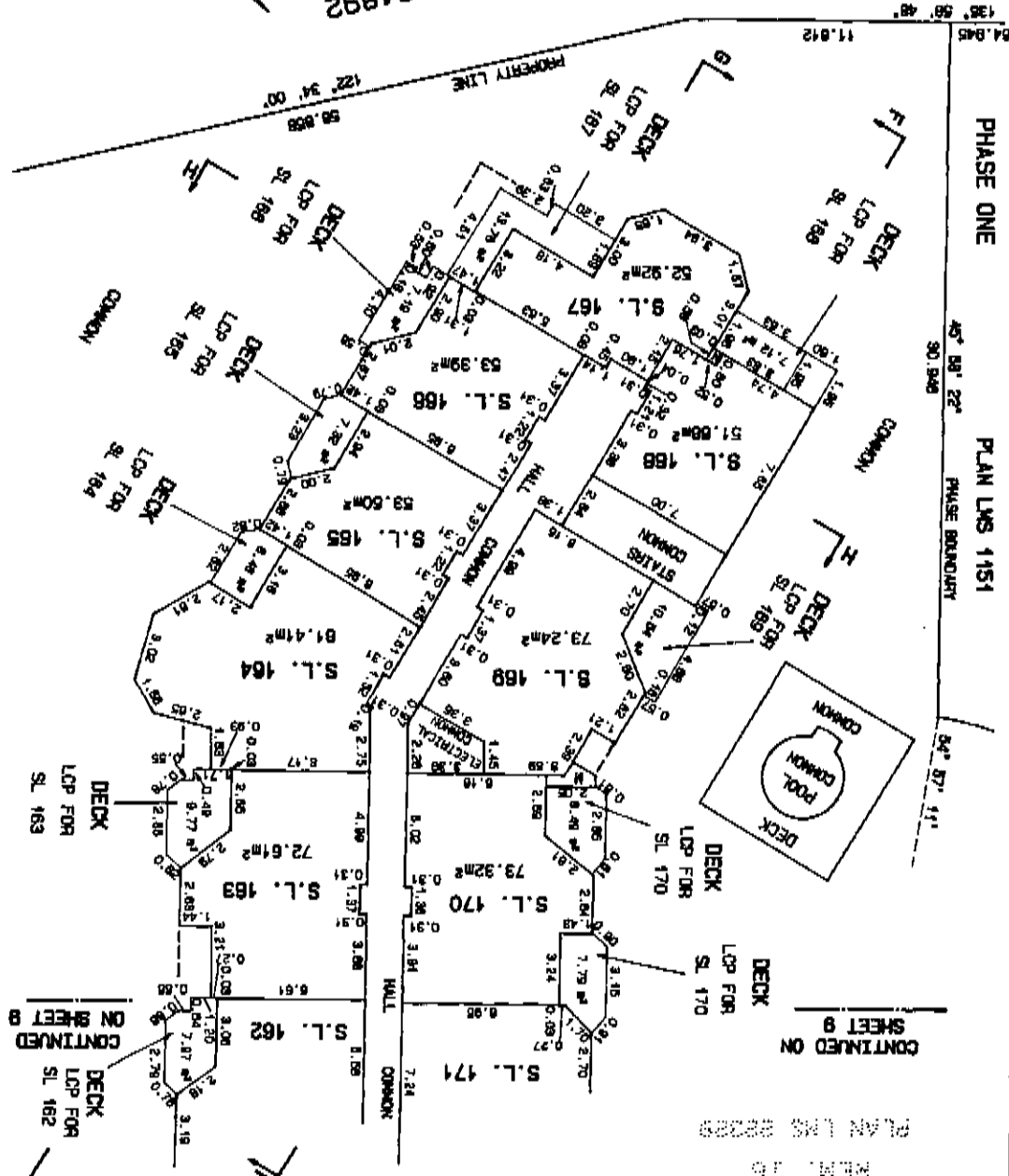
SCALE: 1:200
 ALL DISTANCES SHOWN ARE IN METRES



CONTINUED ON SHEET 10
 ON SHEET 10
 S-7003-9 JANUARY 13, 1995

8-7003-10 JANUARY 13, 1995

RETURNED TO CROWN BY REF. PLAN 21892



PHASE 3:
 LEVEL 3.
 STRATA PLAN
 LMS. 1151

Sheet 10 of 20 Sheets.

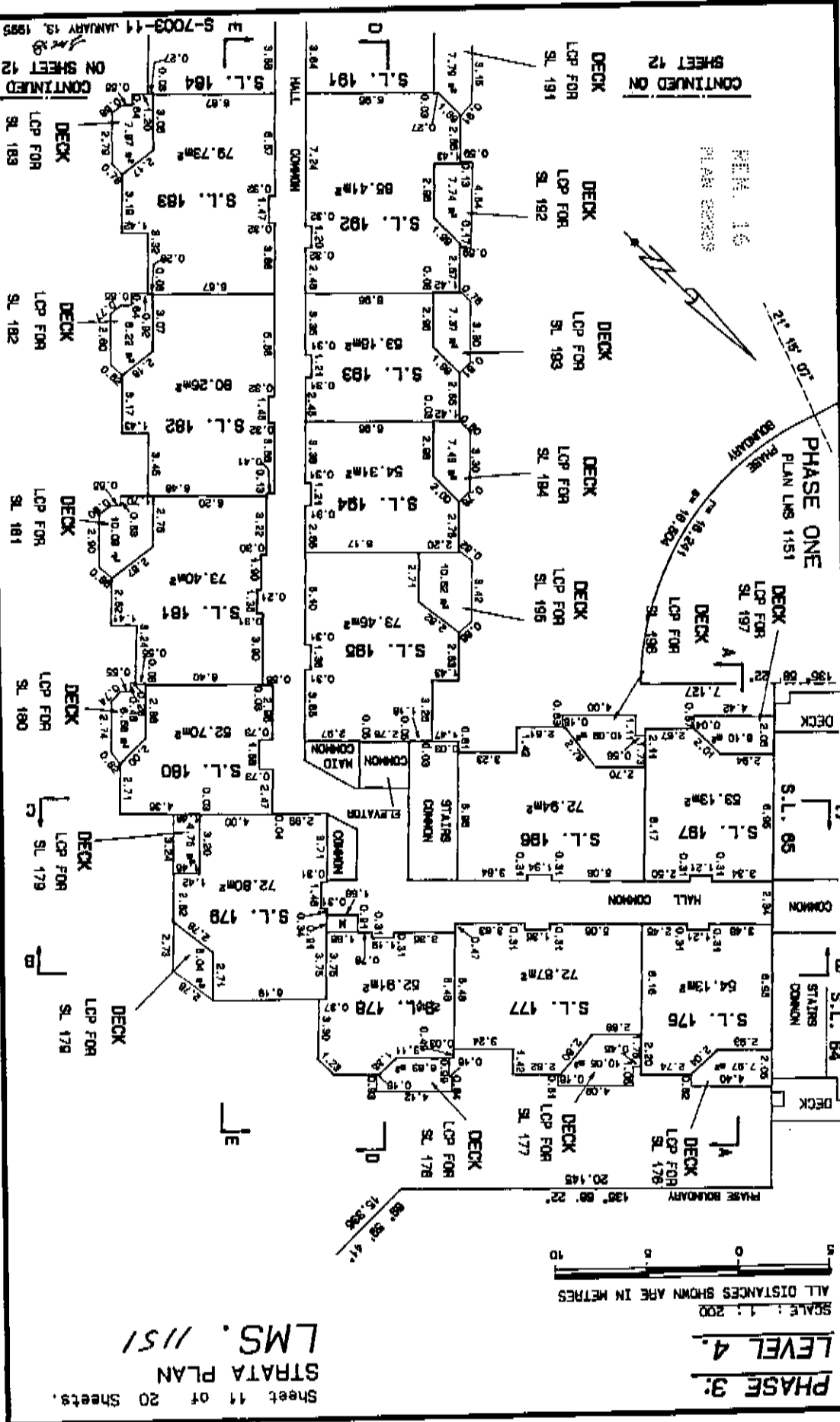
CONTINUED ON SHEET 9

CONTINUED ON SHEET 8

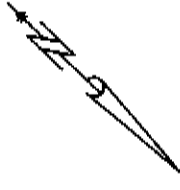
SCALE: 1:200
 ALL DISTANCES SHOWN ARE IN METRES

0 5 10

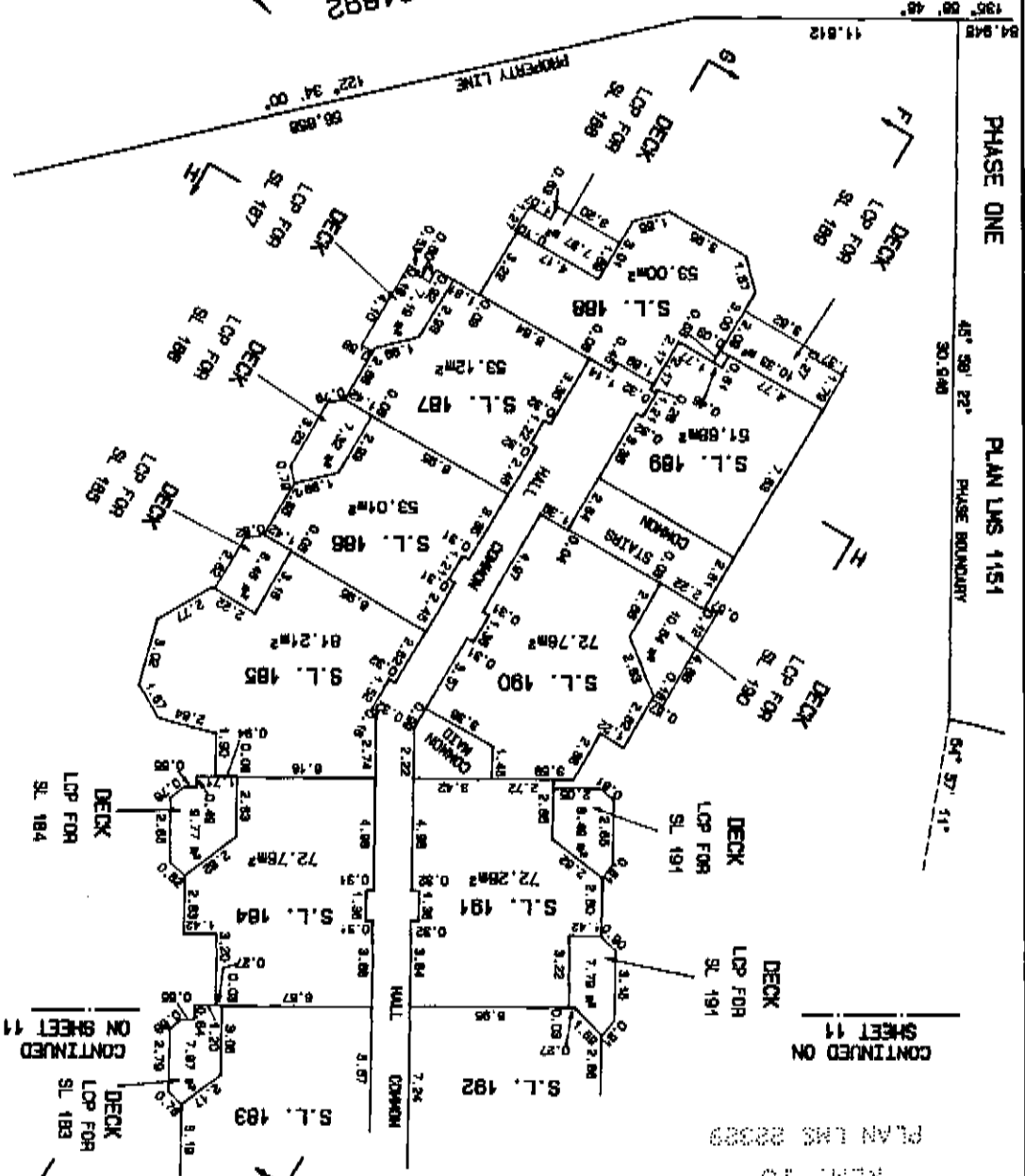
PLAN LMS 88229
 REM. 16

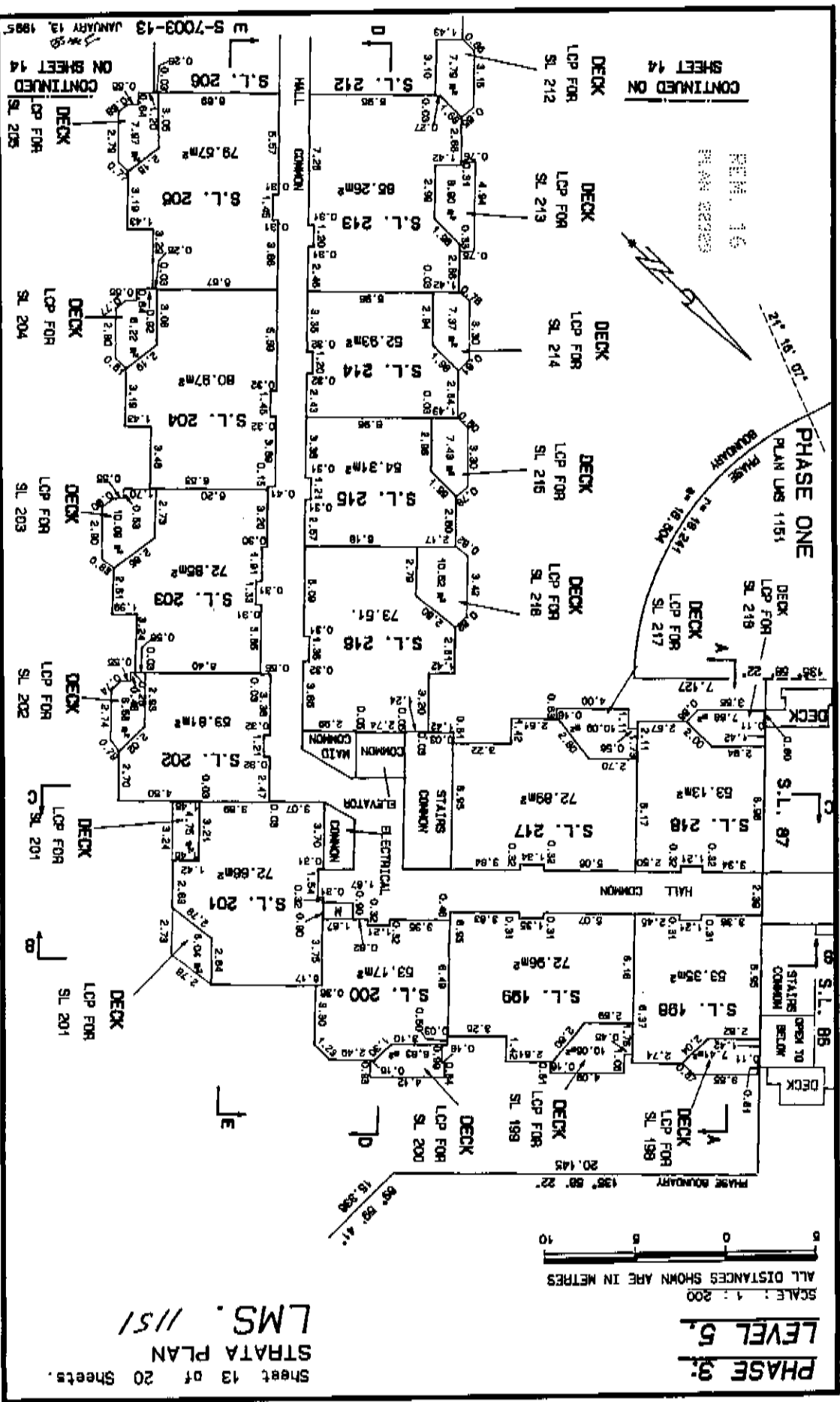


S-7003-12 JANUARY 13, 1995



RETURNED TO CROWN BY REF. PLAN 21892





PHASE 3:
LEVEL 5.
SCALE: 1:200
ALL DISTANCES SHOWN ARE IN METRES

Sheet 13 of 20 Sheets.
STRATA PLAN
LMS. 1151

PHASE ONE
PLAN URS 1151
REVISION 16
DATE 02/20/05

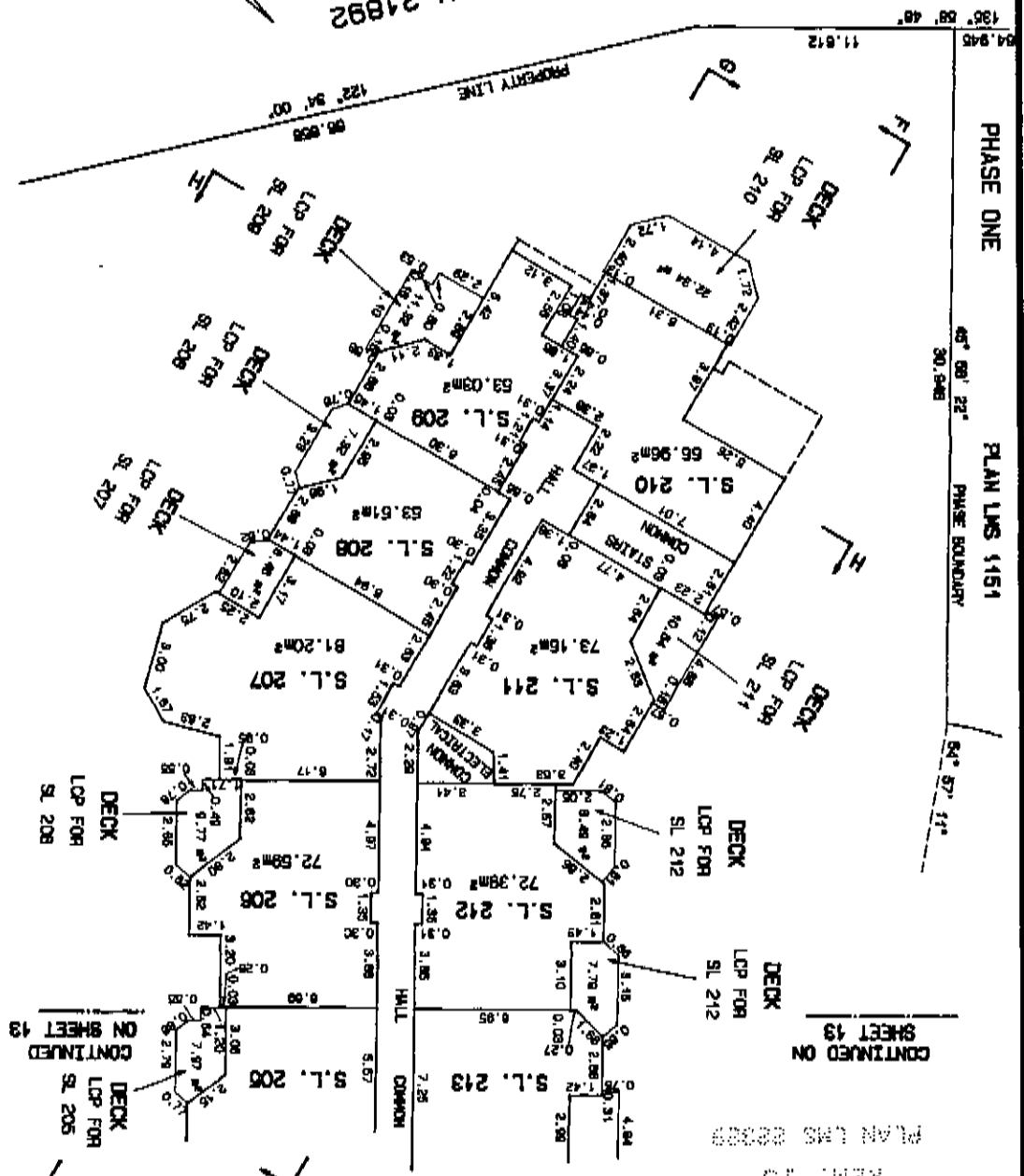
CONTINUED ON SHEET 14

ON SHEET 14 CONTINUED

U S-7003-13 JANUARY 13, 1985

S-7003-14 JANUARY 13, 1985

RETURNED TO CROWN BY REF. PLAN 21892



PHASE 3:
 LEVEL 5.
 SCALE: 1:200
 ALL DISTANCES SHOWN ARE IN METRES

CONTINUED ON SHEET 13
 PLAN LMS 22229

REIN. 16
 CONTINUED ON SHEET 13

DECK LCP FOR SL 212
 DECK LCP FOR SL 211
 DECK LCP FOR SL 210
 DECK LCP FOR SL 208
 DECK LCP FOR SL 207
 DECK LCP FOR SL 206
 DECK LCP FOR SL 205

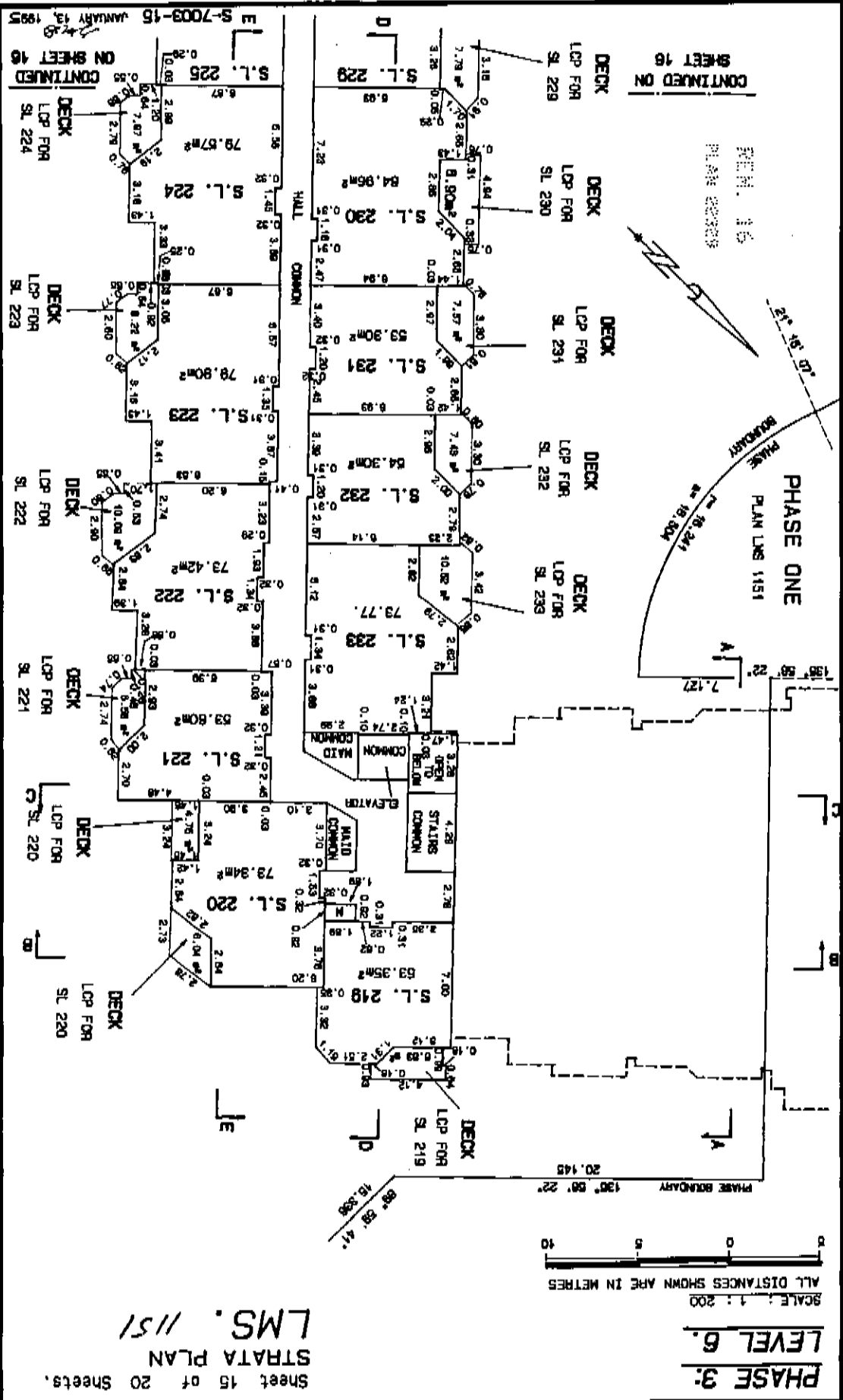
HALL
 COMMON
 COMMON 1
 COMMON 2
 COMMON 3
 COMMON 4
 COMMON 5
 COMMON 6
 COMMON 7
 COMMON 8
 COMMON 9
 COMMON 10
 COMMON 11
 COMMON 12
 COMMON 13
 COMMON 14
 COMMON 15
 COMMON 16
 COMMON 17
 COMMON 18
 COMMON 19
 COMMON 20
 COMMON 21
 COMMON 22
 COMMON 23
 COMMON 24
 COMMON 25
 COMMON 26
 COMMON 27
 COMMON 28
 COMMON 29
 COMMON 30
 COMMON 31
 COMMON 32
 COMMON 33
 COMMON 34
 COMMON 35
 COMMON 36
 COMMON 37
 COMMON 38
 COMMON 39
 COMMON 40
 COMMON 41
 COMMON 42
 COMMON 43
 COMMON 44
 COMMON 45
 COMMON 46
 COMMON 47
 COMMON 48
 COMMON 49
 COMMON 50

S.L. 208
 S.L. 207
 S.L. 210
 S.L. 211
 S.L. 212
 S.L. 213
 S.L. 214
 S.L. 215
 S.L. 216
 S.L. 217
 S.L. 218
 S.L. 219
 S.L. 220
 S.L. 221
 S.L. 222
 S.L. 223
 S.L. 224
 S.L. 225
 S.L. 226
 S.L. 227
 S.L. 228
 S.L. 229
 S.L. 230
 S.L. 231
 S.L. 232
 S.L. 233
 S.L. 234
 S.L. 235
 S.L. 236
 S.L. 237
 S.L. 238
 S.L. 239
 S.L. 240
 S.L. 241
 S.L. 242
 S.L. 243
 S.L. 244
 S.L. 245
 S.L. 246
 S.L. 247
 S.L. 248
 S.L. 249
 S.L. 250
 S.L. 251
 S.L. 252
 S.L. 253
 S.L. 254
 S.L. 255
 S.L. 256
 S.L. 257
 S.L. 258
 S.L. 259
 S.L. 260
 S.L. 261
 S.L. 262
 S.L. 263
 S.L. 264
 S.L. 265
 S.L. 266
 S.L. 267
 S.L. 268
 S.L. 269
 S.L. 270
 S.L. 271
 S.L. 272
 S.L. 273
 S.L. 274
 S.L. 275
 S.L. 276
 S.L. 277
 S.L. 278
 S.L. 279
 S.L. 280
 S.L. 281
 S.L. 282
 S.L. 283
 S.L. 284
 S.L. 285
 S.L. 286
 S.L. 287
 S.L. 288
 S.L. 289
 S.L. 290
 S.L. 291
 S.L. 292
 S.L. 293
 S.L. 294
 S.L. 295
 S.L. 296
 S.L. 297
 S.L. 298
 S.L. 299
 S.L. 300

PROPERTY LINE
 PHASE BOUNDARY

9
 0
 5
 10

Sheet 14 of 20 Sheets.
 STRATA PLAN
 LMS. 1151



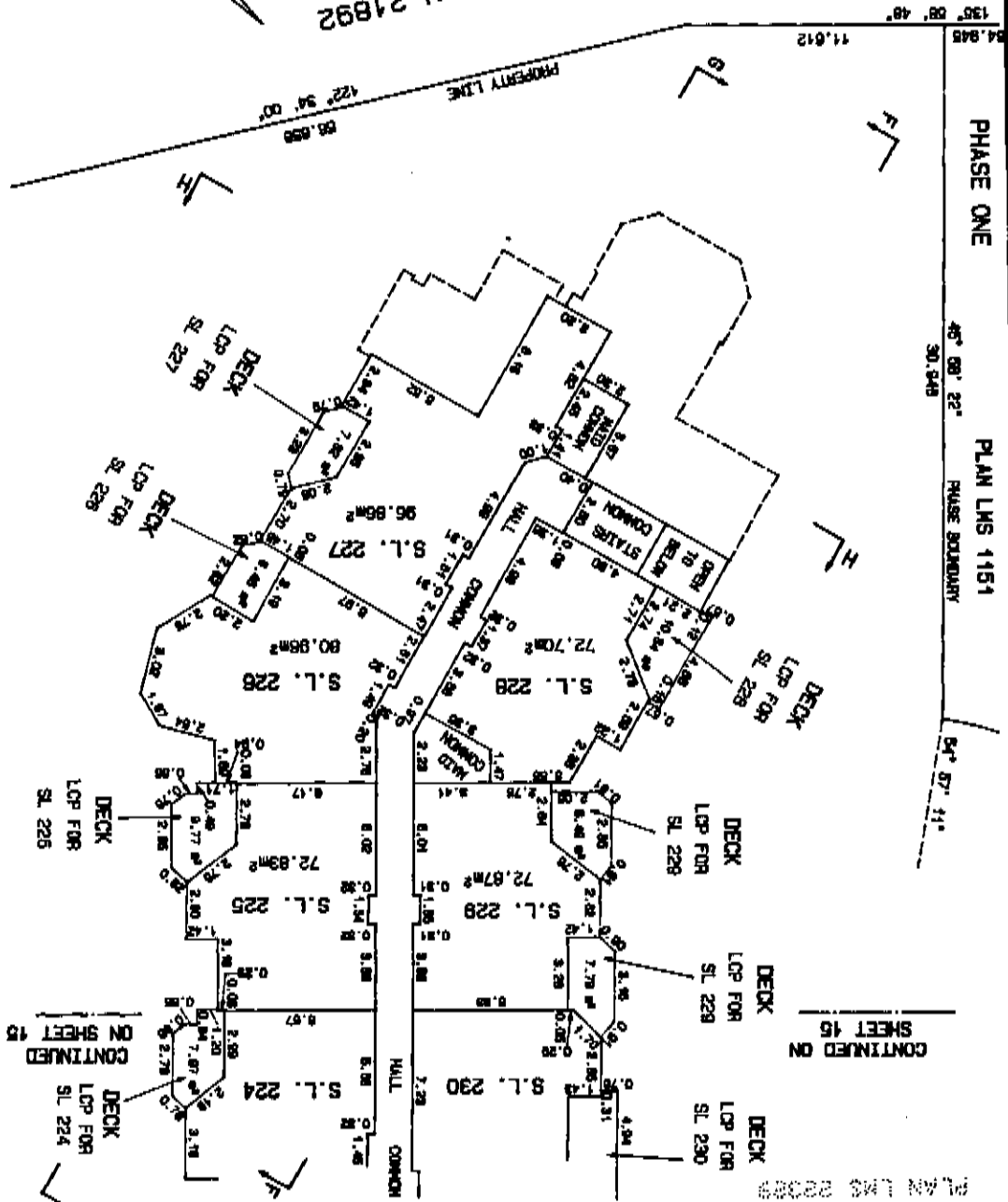
PHASE 3:
 LEVEL 6.
 STRATA PLAN
 LMS. 1151

SCALE: 1:200
 ALL DISTANCES SHOWN ARE IN METRES

Sheet 15 of 20 Sheets.
 ON SHEET 16
 CONTINUED ON
 SHEET 16
 S-7003-15 JANUARY 13, 1995

S-7003-16 JANUARY 13, 1985

RETURNED TO CROWN BY REF. PLAN 21892



PHASE 3:
 LEVEL 6.
 STRATA PLAN
 LMS. 1151

Scale: 1:200
 ALL DISTANCES SHOWN ARE IN METRES

0 5 10

CONTINUED ON SHEET 15
 CONTINUED ON SHEET 13

DECK LOP FOR SL 227
 DECK LOP FOR SL 228
 DECK LOP FOR SL 228
 DECK LOP FOR SL 228
 DECK LOP FOR SL 228
 DECK LOP FOR SL 228
 DECK LOP FOR SL 224

S.L. 227
 S.L. 228
 S.L. 225
 S.L. 224
 S.L. 230

COMMON
 HALL
 STAIRS
 COMMON

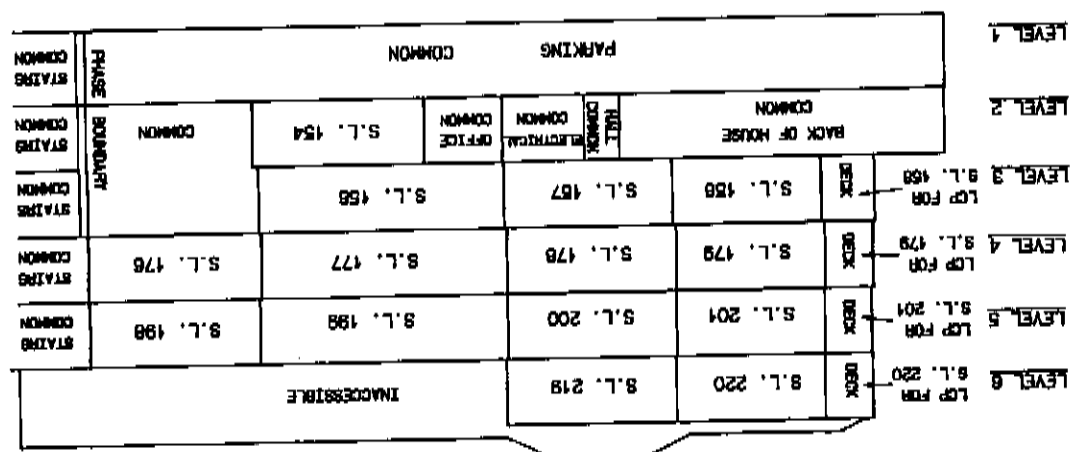
PHASE ONE
 PLAN LMS 1151
 PHASE BOUNDARY

45° 00' 22"
 30.948
 64° 07' 11"

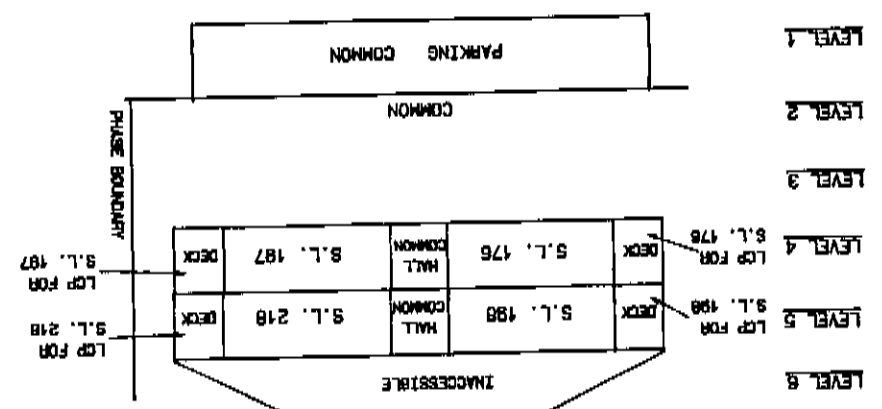
135° 08' 48"
 11.612
 66.858
 122° 34' 00"

Sheet 16 of 20 Sheets.

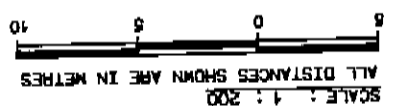
S-7003-17 JANUARY 13, 1995



SECTION B - B



SECTION A - A



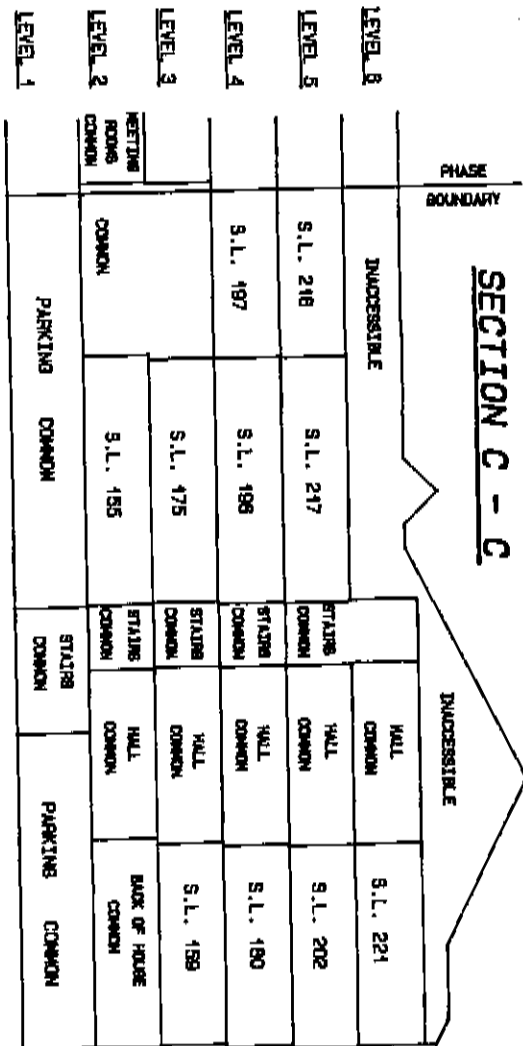
Sheet 17 of 20 Sheets.
 STRATA PLAN
 LMS. 1151

PHASE 3:
SECTIONS

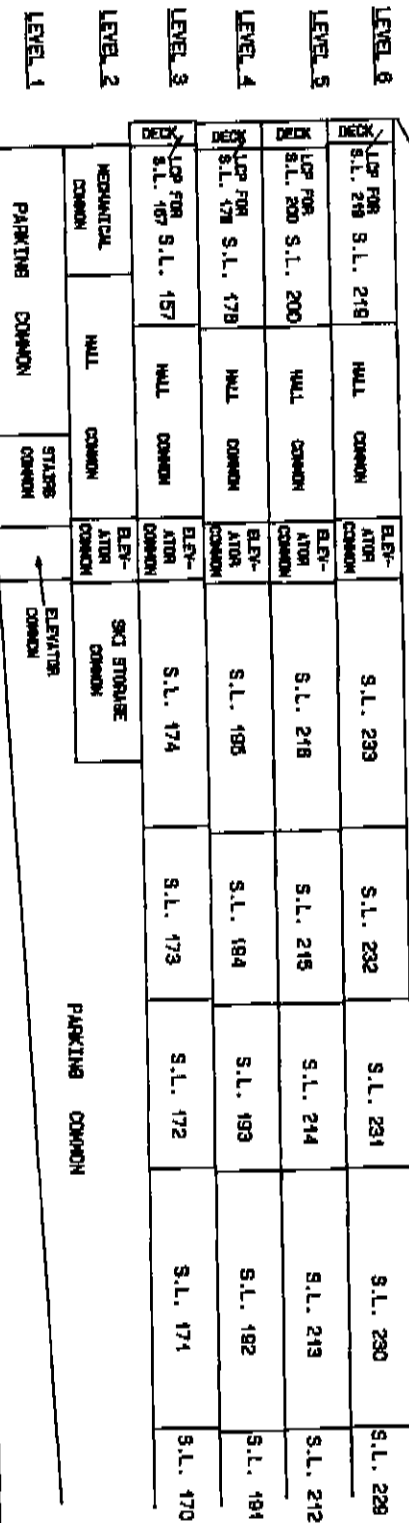
**PHASE 3:
SECTIONS**

SCALE: 1:200
ALL DISTANCES SHOWN ARE IN METRES

SECTION D - D



IMACCESSIBLE

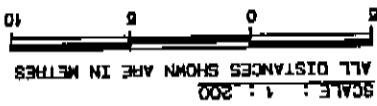


Sheet 18 of 20 Sheets.
STRATA PLAN
LMS. 1151

9-7003-18
JANUARY 13, 1995

SECTION E - E

UNACCESSIBLE																	
S.L. 225	S.L. 224	S.L. 223	S.L. 222	S.L. 221	S.L. 220				S.L. 183	S.L. 182	S.L. 181	S.L. 180	S.L. 189	S.L. 188	S.L. 187	S.L. 186	
LEVEL 8															LEVEL 3		
LEVEL 5															LEVEL 4		
LEVEL 4															LEVEL 3		
LEVEL 3															LEVEL 2		
LEVEL 2															LEVEL 1		
PARKING COMMON												PARKING COMMON			PARKING COMMON		
PARKING COMMON												PARKING COMMON			PARKING COMMON		



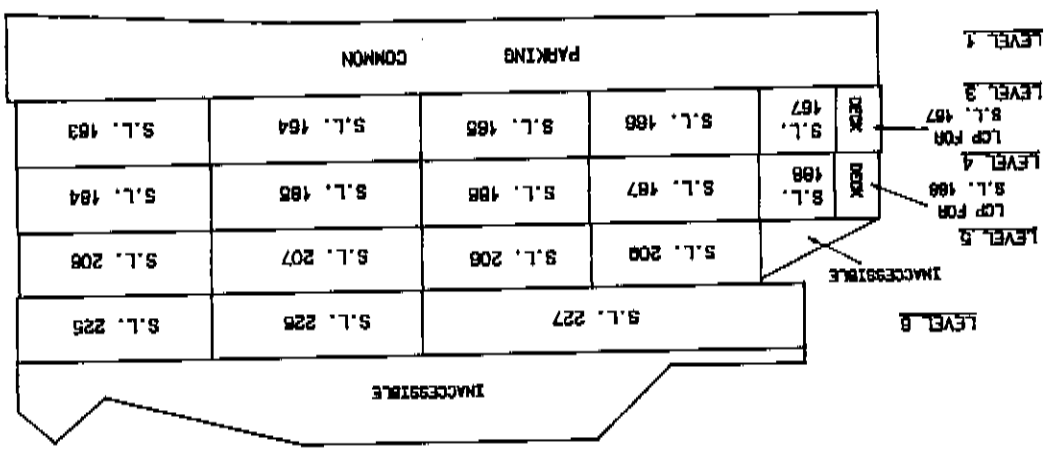
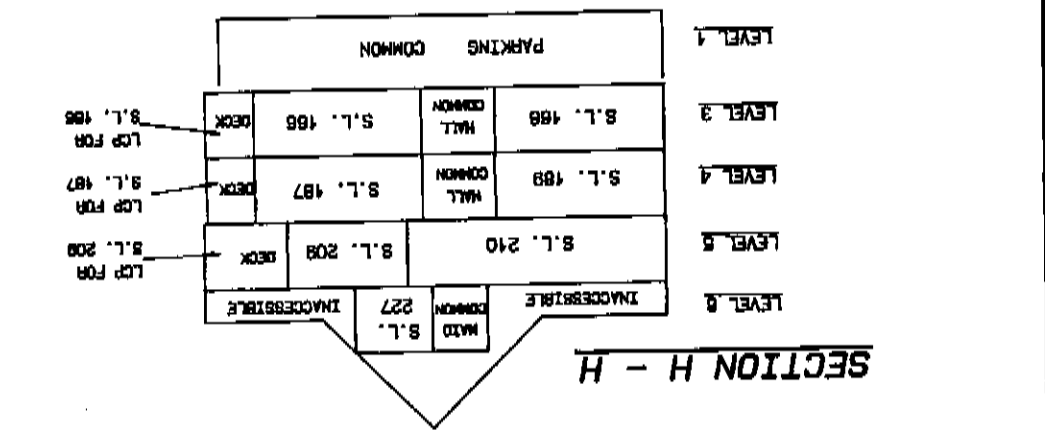
PHASE 3:
SECTIONS

SECTION F - F

UNACCESSIBLE																																																																									
S.L. 224	S.L. 223	S.L. 222	S.L. 221	S.L. 220	S.L. 219	S.L. 218	S.L. 217	S.L. 216	S.L. 215	S.L. 214	S.L. 213	S.L. 212	S.L. 211	S.L. 210	S.L. 209	S.L. 208	S.L. 207	S.L. 206	S.L. 205	S.L. 204	S.L. 203	S.L. 202	S.L. 201	S.L. 199	S.L. 198	S.L. 197	S.L. 196	S.L. 195	S.L. 194	S.L. 193	S.L. 192	S.L. 191	S.L. 190	S.L. 189	S.L. 188	S.L. 187	S.L. 186	S.L. 185	S.L. 184	S.L. 183	S.L. 182	S.L. 181	S.L. 180	S.L. 179	S.L. 178	S.L. 177	S.L. 176	S.L. 175	S.L. 174	S.L. 173	S.L. 172	S.L. 171	S.L. 170	S.L. 169	S.L. 168	S.L. 167	S.L. 166	S.L. 165	S.L. 164	S.L. 163	S.L. 162	S.L. 161	S.L. 160	S.L. 159	S.L. 158	S.L. 157	S.L. 156	S.L. 155	S.L. 154	S.L. 153	S.L. 152	S.L. 151	S.L. 150
LEVEL 8												LEVEL 5												LEVEL 4												LEVEL 3												LEVEL 2												LEVEL 1													
PARKING COMMON												PARKING COMMON												PARKING COMMON												PARKING COMMON												PARKING COMMON												PARKING COMMON													
PARKING COMMON												PARKING COMMON												PARKING COMMON												PARKING COMMON												PARKING COMMON												PARKING COMMON													

Sheet 19 of 20 Sheets.
STATA PLAN
LMS. 1151

S-7003-20 JANUARY 13, 1985



SECTION G - G

SECTION H - H

SCALE: 1:200
ALL DISTANCES SHOWN ARE IN METRES

Sheet 20 of 20 Sheets.
STRATA PLAN
LMS. 1151

PHASE 3:
SECTIONS