

VR2

STRATA PLAN OF LOT 1,
DISTRICT LOTS 7165 AND 7288,
GROUP 1, NEW WESTMINSTER DISTRICT

ACCORDING TO PLAN 12963
SCALE: 1 INCH = 50 FEET

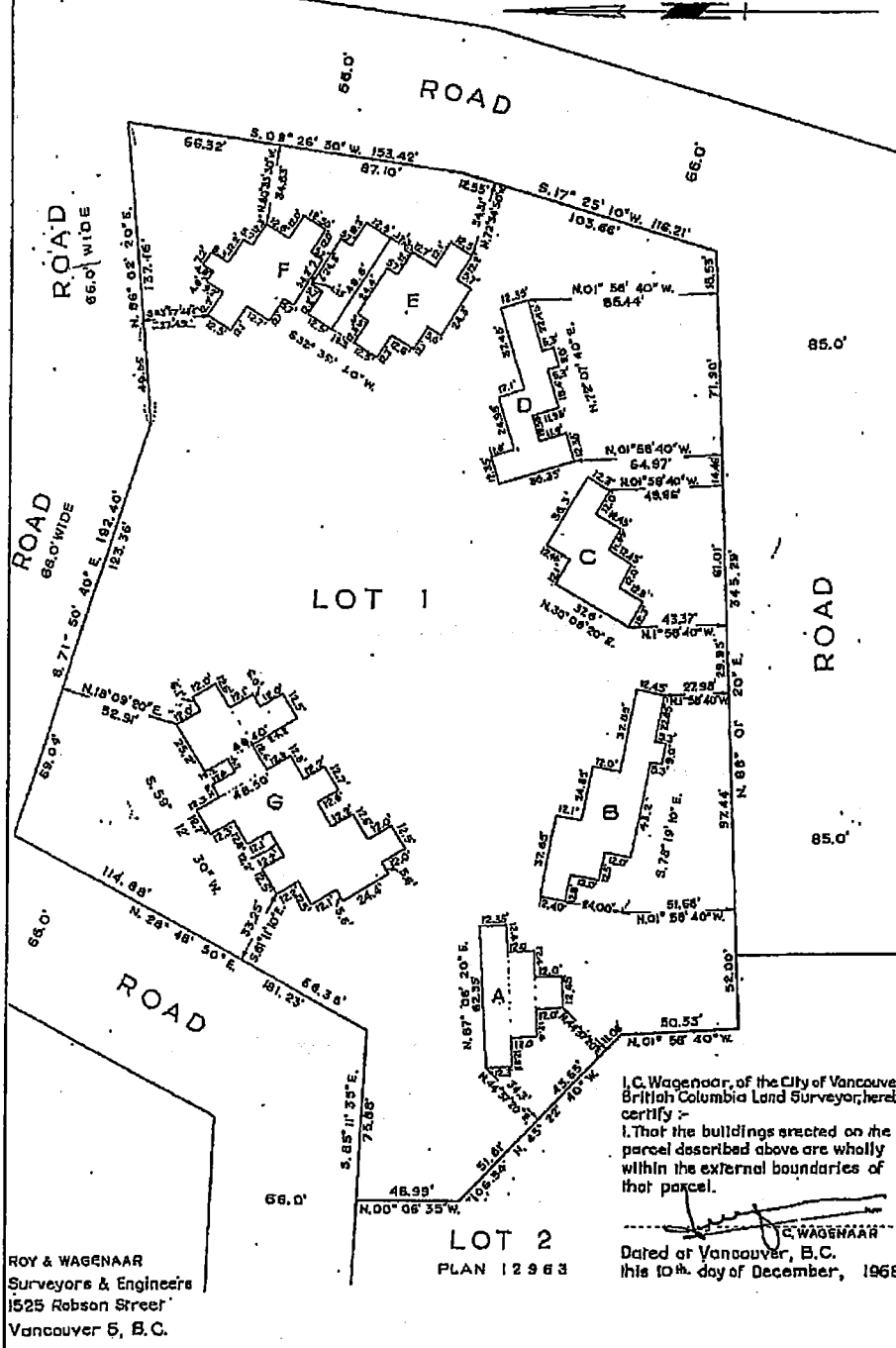
BARIBALDI - WHISTLER CONDOMINIUMS,
WHISTLER ROAD, ALTA LAKE,
VANCOUVER ASSESSMENT DISTRICT

THE ADDRESS FOR SERVICE OF DOCUMENTS ON THE STRATA CORPORATION
15 - 14 TH FLOOR, 1030 WEST GEORGIA STREET,
1. THE OWNERS, STRATA PLAN NO. VR.2:

Sheet 1 of 26 Sheets
(comprising 26 pages)

Strata Plan VR2 deposited and registered in
the Land Registry Office at Vancouver, B.C.
this 19th day of December, 1968.

J.M.D. Toofu
Registrar



I, C. Wagenaar, of the City of Vancouver,
British Columbia Land Surveyor, hereby
certify -
1. That the buildings erected on the
parcel described above are wholly
within the external boundaries of
that parcel.

I. C. WAGENAAR
Dated at Vancouver, B.C.
this 10th day of December, 1968

ROY & WAGENAAR
Surveyors & Engineers
1525 Robson Street
Vancouver 6, B.C.

LOT 2
PLAN 12963

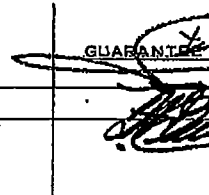
SCHEDULE OF UNIT ENTITLEMENT

STRATA TITLES ACT

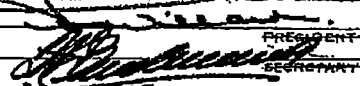
Cor. No.	Sheet No.	Unit Entitlement	Office Use Only	
			First Certificates of Title	
			Vol.	Fol.
1	3A	1 (ONE)	3111	586728-L
2	3A	1 (ONE)		586729-L
3	3A	1 (ONE)		586730-L
4	4A	1 (ONE)		586731-L
5	4A	1 (ONE)		586732-L
6	4A	1 (ONE)		586733-L
7	4A	1 (ONE)		586734-L
8	5A	1 (ONE)		586735-L
9	5A	1 (ONE)		586736-L
10	6A	1 (ONE)		586737-L
11	6A	1 (ONE)		586738-L
12	6A	1 (ONE)		586739-L
13	6A	1 (ONE)		586740-L
14	7A	1 (ONE)		586741-L
15	7D	1 (ONE)		586742-L
16	8A	1 (ONE)		586743-L
17	8A	1 (ONE)		586744-L
18	8A	1 (ONE)		586745-L
19	8A	1 (ONE)		586746-L
20	8A,B	1 (ONE)		586747-L
21	8A	1 (ONE)		586748-L
22	7 B,C,D	1 (ONE)		586749-L
23	7A	1 (ONE)		586750-L
24	9A	1 (ONE)	3112	586751-L
25	9A	1 (ONE)		586752-L
26	9A	1 (ONE)		586753-L
27	9A	1 (ONE)		586754-L
28	9A	1 (ONE)		586755-L
29	9A	1 (ONE)		586756-L
30	9A	1 (ONE)		586757-L
31	9A	1 (ONE)		586758-L
32	9A	1 (ONE)		586759-L
33	9A	1 (ONE)		586760-L
34	9A	1 (ONE)		586761-L
Aggregate		34		

SPACE FOR SIGNATURES
(Regulation 5 (h))

Witnesses



 GUARANTEE TRUST COMPANY OF CANADA



 PRESIDENT

 SECRETARY

Dated this 10th day of December, 1968

B.C.L.S.

VR 2

STRATA PLAN OF LOT 1,
DISTRICT LOTS 7165 AND 7288,
GROUP 1, NEW WESTMINSTER DISTRICT

ACCORDING TO PLAN 12963
SCALE - 1 INCH = 50 FEET

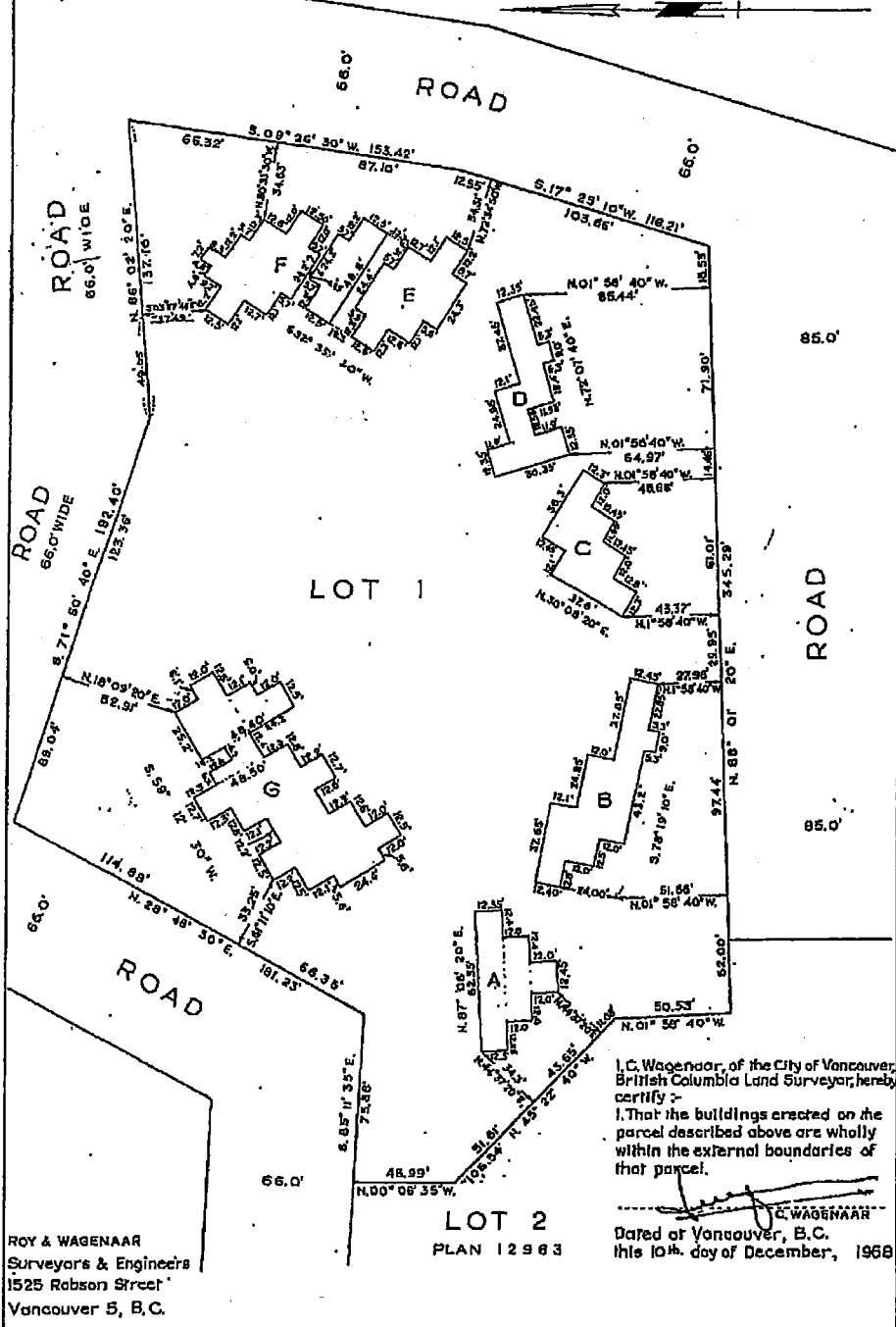
GARIBALDI - WHISTLER CONDOMINIUMS,
WHISTLER ROAD, ALTA LAKE,
VANCOUVER ASSESSMENT DISTRICT

THE ADDRESS FOR SERVICE OF DOCUMENTS ON THE STRATA CORPORATION
IS - 14TH FLOOR, 1030 WEST GEORGIA STREET,
THE OWNERS, STRATA PLAN NO. VR 2.

Sheet 1 of 11 Sheets
(Comprising of 26 pages)

Strata Plan VR 2 deposited and registered in
the Land Registry Office at Vancouver, B.C.
this 19th day of December, 1968.

J.M.S. Tolhu
Registrar



ROY & WAGENAAR
Surveyors & Engineers
1525 Robson Street
Vancouver 5, B.C.

LOT 2
PLAN 12963

I, C. Wagenaar, of the City of Vancouver,
British Columbia Land Surveyor, hereby
certify -
1. That the buildings erected on the
parcel described above are wholly
within the external boundaries of
that parcel.
C. WAGENAAR
Dated at Vancouver, B.C.
this 10th day of December, 1968


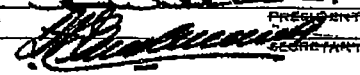
SCHEDULE OF UNIT ENTITLEMENT

STRATA TITLES ACT

Lot No.	Sheet No.	Unit Entitlement	Office Use Only	
			First Certificates of Title	
			Vol.	Fol.
1	3A	1 (ONE)	3111	586728-L
2	3A	1 (ONE)		586729-L
3	3A	1 (ONE)		586730-L
4	4A	1 (ONE)		586731-L
5	4A	1 (ONE)		586732-L
6	4A	1 (ONE)		586733-L
7	4A	1 (ONE)		586734-L
8	5A	1 (ONE)		586735-L
9	5A	1 (ONE)		586736-L
10	5A	1 (ONE)		586737-L
11	6A	1 (ONE)		586738-L
12	6A	1 (ONE)		586739-L
13	6A	1 (ONE)		586740-L
14	7A	1 (ONE)		586741-L
15	7D	1 (ONE)		586742-L
16	8A	1 (ONE)		586743-L
17	8A	1 (ONE)		586744-L
18	8A	1 (ONE)		586745-L
19	8A	1 (ONE)		586746-L
20	8A,B	1 (ONE)		586747-L
21	8A	1 (ONE)		586748-L
22	7B,C,D	1 (ONE)		586749-L
23	7A	1 (ONE)		586750-L
24	9A	1 (ONE)	3112	586751-L
25	9A	1 (ONE)		586752-L
26	9A	1 (ONE)		586753-L
27	9A	1 (ONE)		586754-L
28	9A	1 (ONE)		586755-L
29	9A	1 (ONE)		586756-L
30	9A	1 (ONE)		586757-L
31	9A	1 (ONE)		586758-L
32	9A	1 (ONE)		586759-L
33	9A	1 (ONE)		586760-L
34	9A	1 (ONE)		586761-L
Aggregate		34		

SPACE FOR SIGNATURES
(Regulation 5 (h))

Witnesses

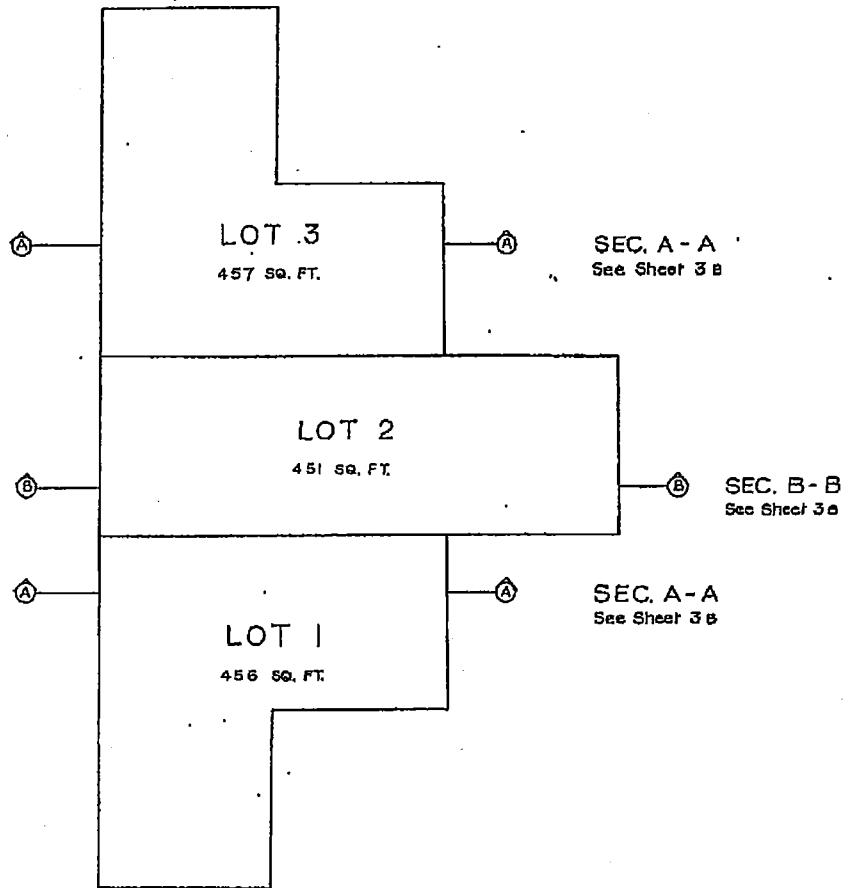

 WITNESSES
 GUARANTEE TRUST COMPANY OF CANADA

 PRESIDENT
 SECRETARY

Dated this 10th day of December, 1968

BUILDING "A"

Sheet 3 A of 11 Sheets
MK

SCALE :- 1 INCH = 6 FEET



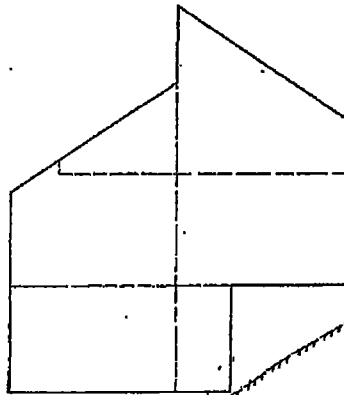
Dated this 10th day of December, 1966

[Signature]
B.C.L.S.

BUILDING "A"
TYPICAL ELEVATIONS

Sheet 3a of 11 Sheets
MK

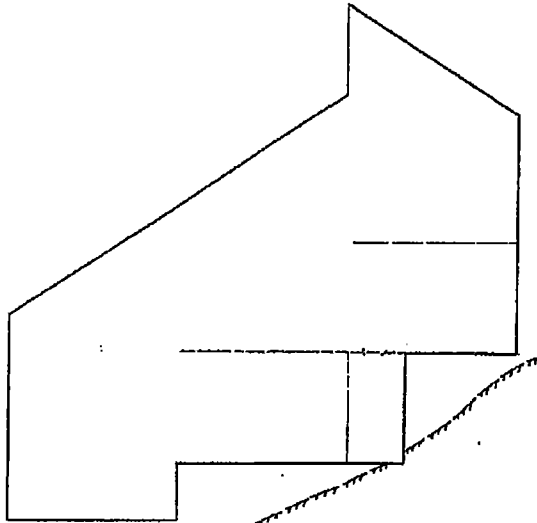
SCALE: 1 INCH = 8 FEET



AVERAGE GROUND

----- Interior walls, floors and ceilings

SECTION A-A
LOTS 1 AND 3
See Sheet 3 A



AVERAGE GROUND

----- Interior walls, floors and ceilings

SECTION B-B
LOT 2

See Sheet 3 A

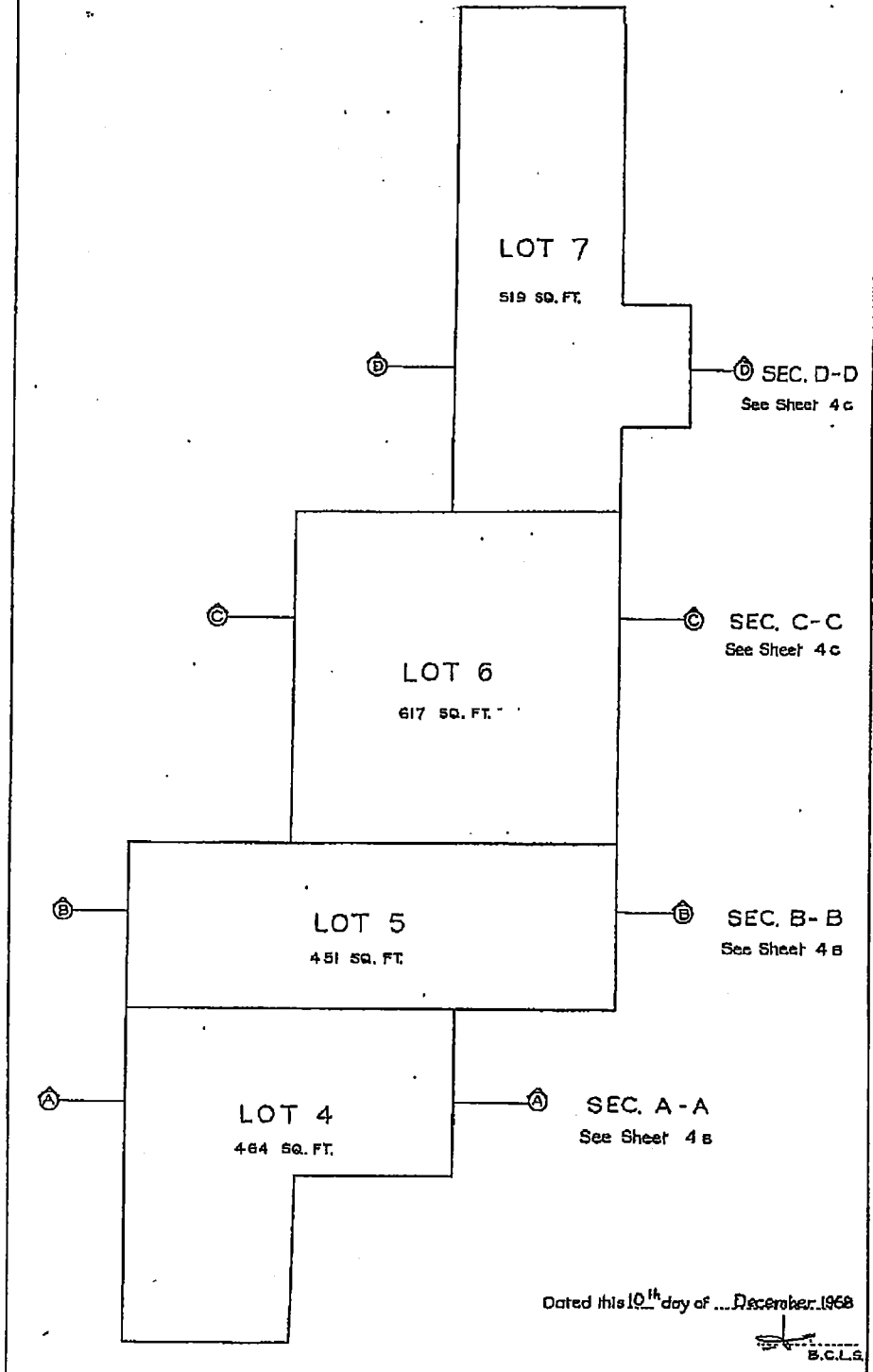
Dated this 10th day of December 1968


B.C.L.S.

BUILDING "B"

Sheet 4 A of 11 Sheets
K

SCALE: 1 INCH = 8 FEET

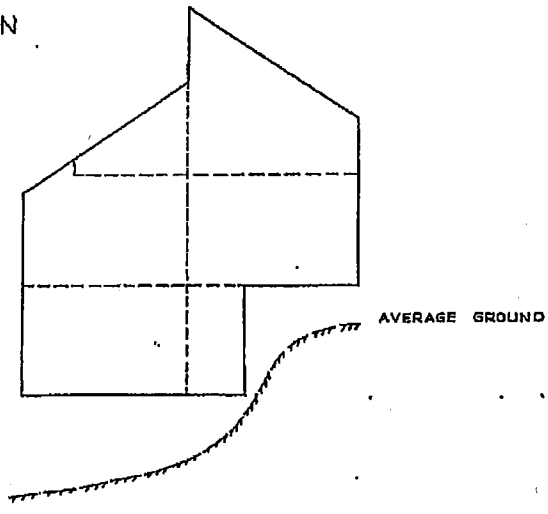


Dated this 10th day of ...December, 1968

B.C.L.S.

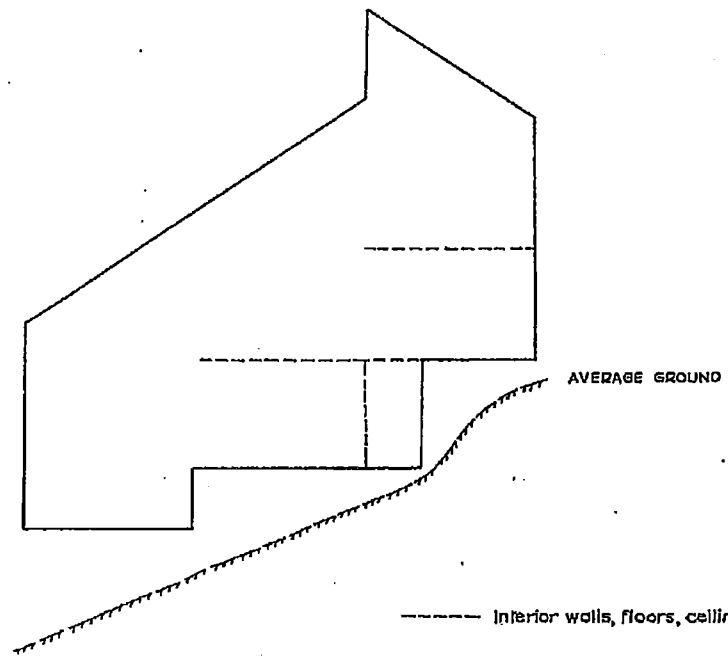
BUILDING "B"
TYPICAL ELEVATION
SCALE: 1 INCH = 8 FEET

Sheet 4 B of 11 Sheets
16



SECTION A-A
LOT 4
See Sheet 4 A

----- Interior walls, floors, ceilings



SECTION B-B
LOT 5
See Sheet 4 A

----- Interior walls, floors, ceilings

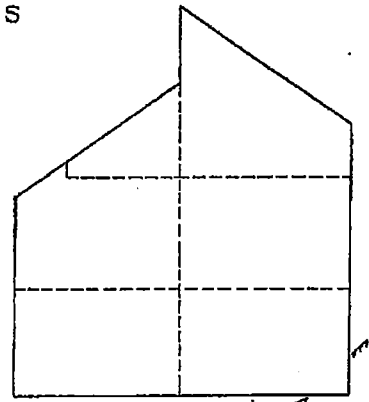
Dated this 19th day of December 1922

[Signature]
S.C.L.S.

BUILDING "B"
TYPICAL ELEVATIONS

Sheet 4c of 11 Sheets

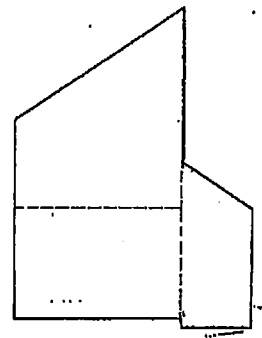
SCALE: 1 INCH = 8 FEET



AVERAGE GROUND

----- Interior walls, floors, ceilings

LOT 6
SECTION C-C
See Sheet 4 A



AVERAGE GROUND

----- Interior walls, floors, ceilings

LOT 7
SECTION D-D
See Sheet 4 A

Dated this 10th day of December 1968

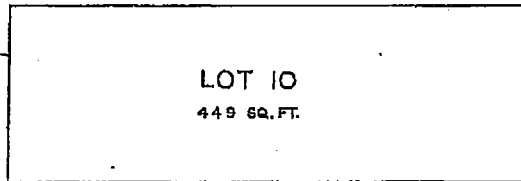
B.G.L.S.
37-67

BUILDING 'C'

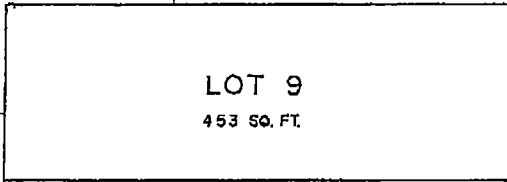
Sheet 5 A of 11 Sheets
18

SCALE :- 1 INCH = 8 FEET

SEC. B-B
See Sheet 5 B



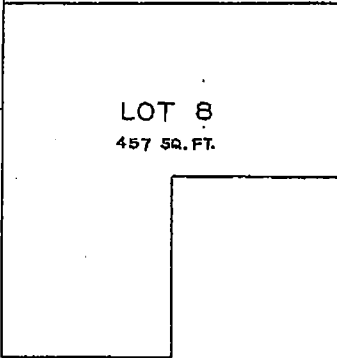
LOT 10
449 SQ. FT.



LOT 9
453 SQ. FT.



SEC. B-B
See Sheet 5 B



LOT 8
457 SQ. FT.



SEC. A-A
See Sheet 5 B

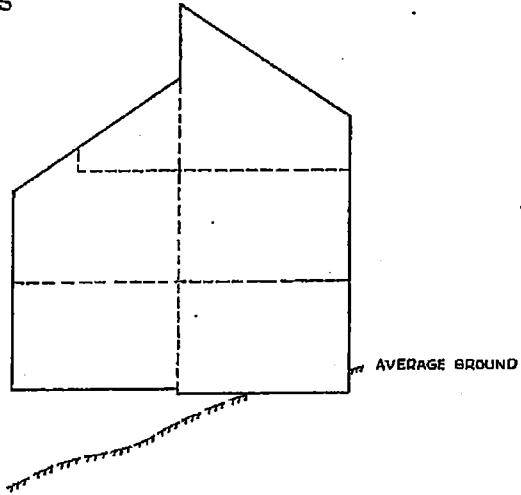
Dated this 10th day of December 1958

B.G.L.S.

BUILDING "C"
TYPICAL ELEVATIONS

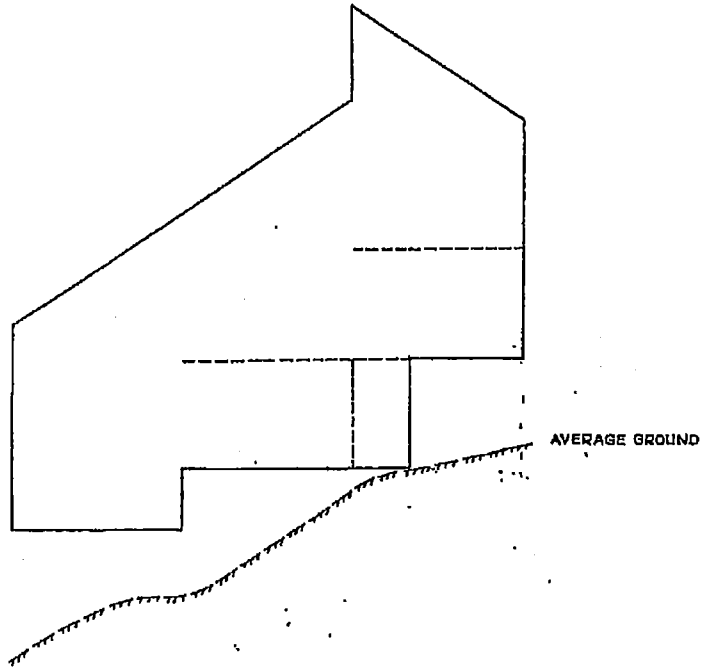
Sheet 5 B of 11 Sheets
MS

SCALE: 1 INCH = 8 FEET



LOT 8
SECTION A-A
See Sheet 5 A

----- Interior walls, floors, ceilings



AVERAGE GROUND

----- Interior walls, floors, ceilings

LOTS 9 AND 10
SECTION B-B

See Sheet 5 A
AMENDED AS TO LOT 9 ONLY

Dated this 21st day of December 1969

21-5-69
J. S. B. Smith

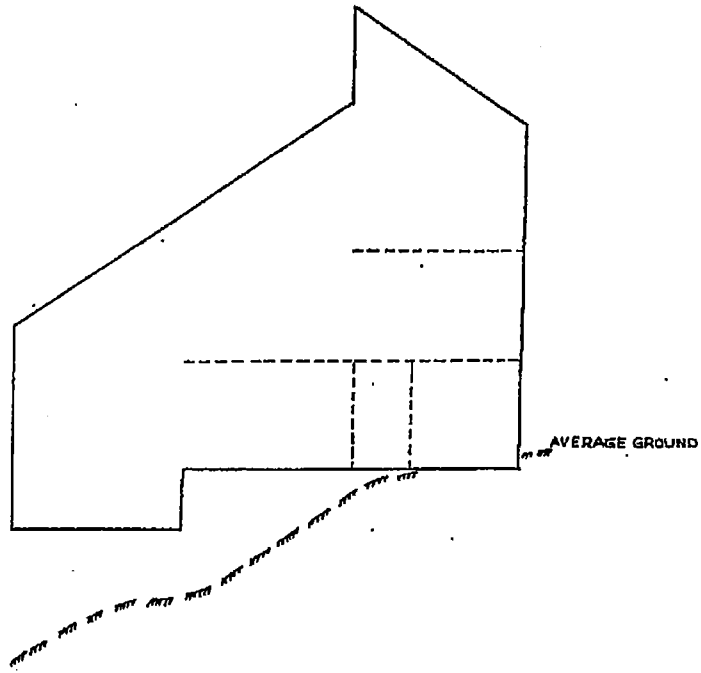
B.O.L.B.

BUILDING "C"
TYPICAL ELEVATIONS.

See
5A & 5B
Sheet of Sheets

SCALE:- 1 INCH = 8 FEET.

AMENDMENT
PER: STRATA TITLES ACT
B.C. REG 196/66 SEC.11



LOT 9

SECTION B-B

See Sheet 5A

Dated this 20th day of May 1968

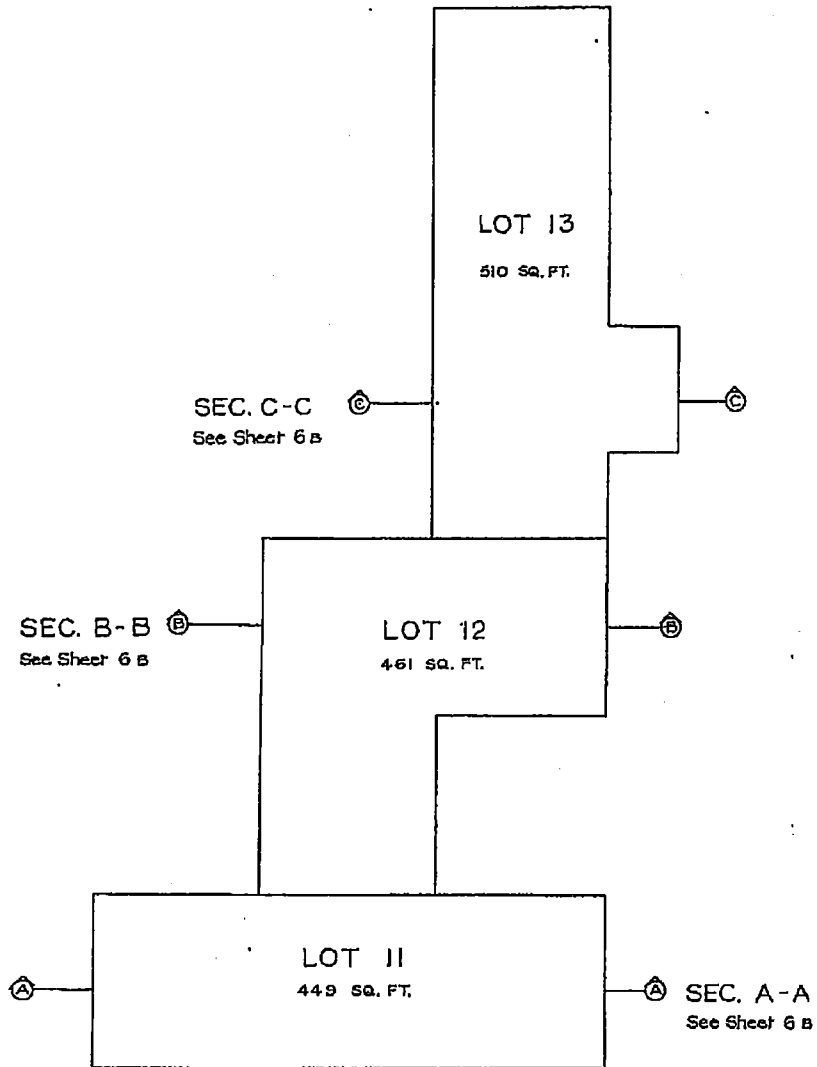
B.C.L.S.

37-67

BUILDING "D"

Sheet 6 A of 11 Sheets
MX

SCALE: 1 INCH = 8 FEET



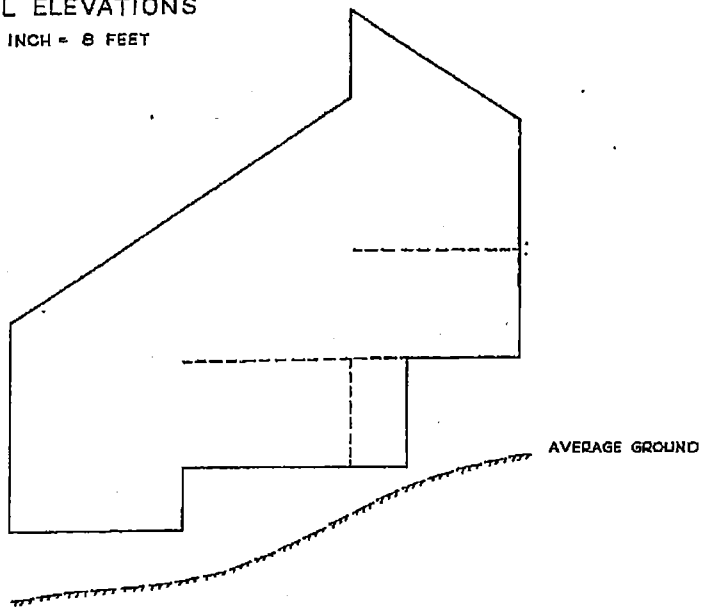
Dated this 10th day of December, 1968

B.C.L.S.
37-67

BUILDING "D"
TYPICAL ELEVATIONS

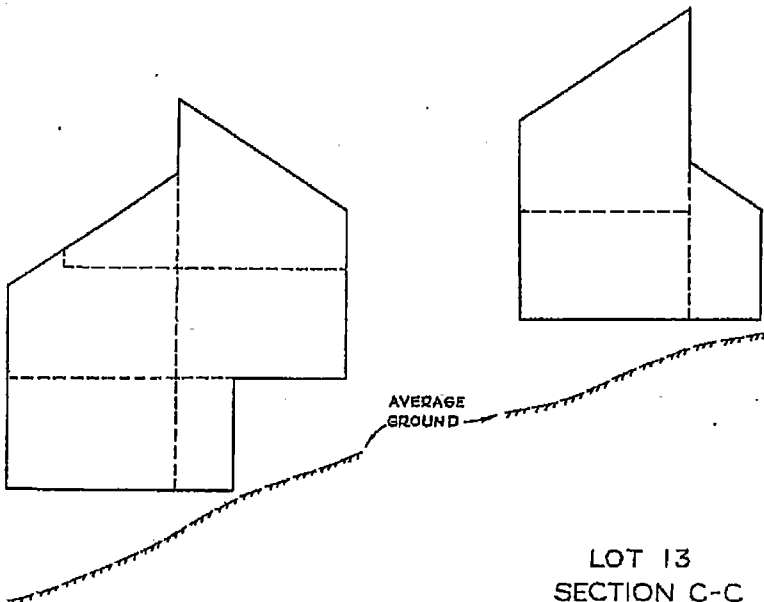
Sheet 6 B of 11 Sheets
MX

SCALE: 1/4" = 8 FEET



----- Interior walls, floors, ceiling

LOT 11
SECTION A-A
See Sheet 6 A



AVERAGE
GROUND

LOT 13
SECTION C-C
See Sheet 6 A

LOT 12
SECTION B-B
See Sheet 6 A

----- Interior walls, floors, ceilings

Dated this 10th day of December 1968

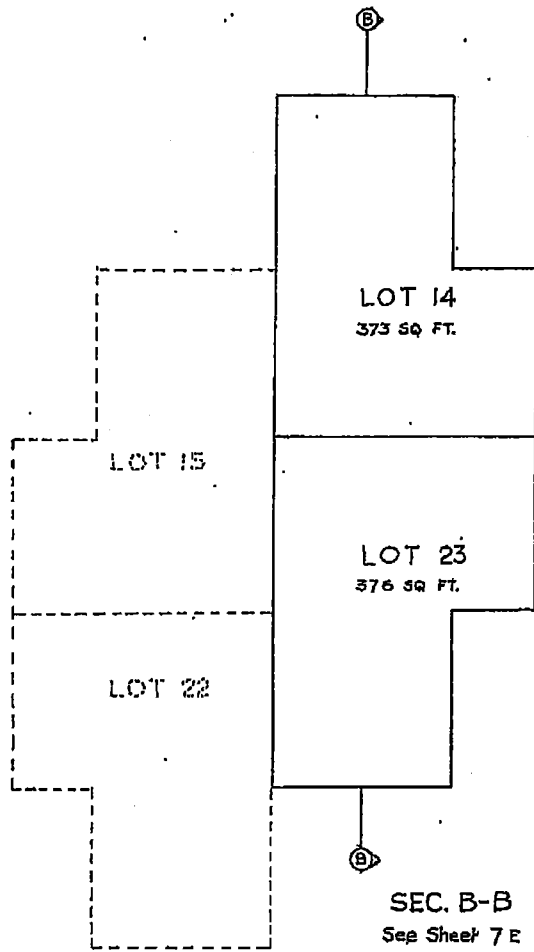
B.C.L.S.
37-67

VR2

BUILDING "E"

Sheet 7A of 11 Sheets
MS

SCALE: 1/4 INCH = 8 FEET



Dated this 10th day of December 1968

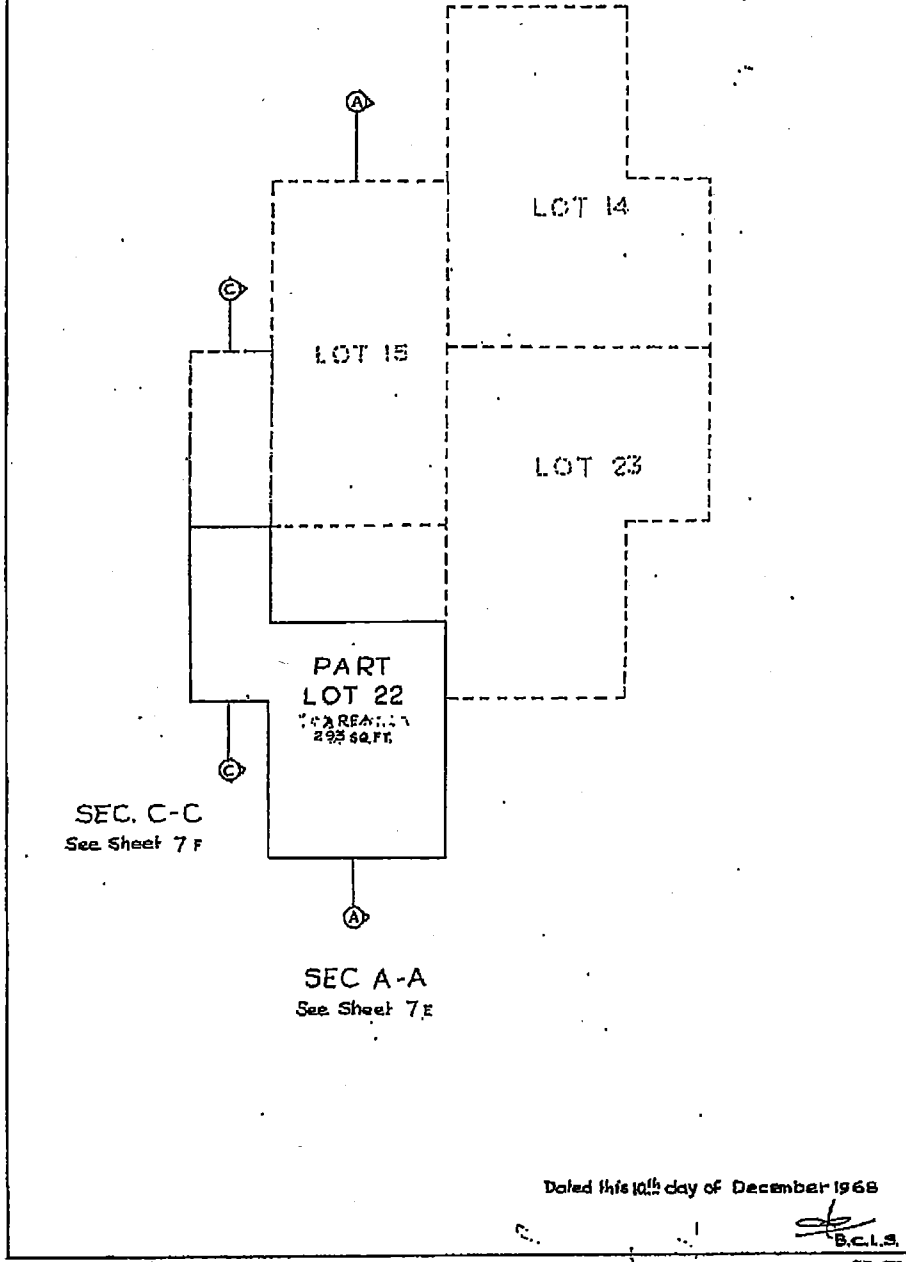
B.C.L.S.
37-67

VR2

BUILDING "E"
1ST. LEVEL

Sheet 7 B of 11 Sheets
MK

SCALE: 1 INCH = 8 FEET



Dated this 10th day of December 1968

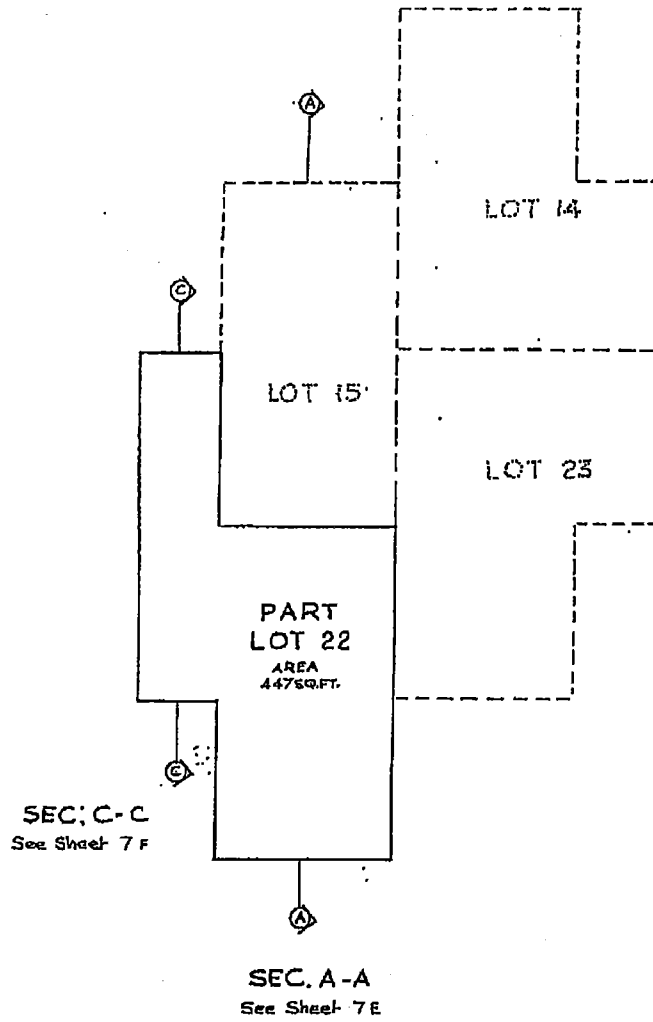
[Signature]
B.C.I.S.

VR2

BUILDING "E"
2ND LEVEL

Sheet 7c of 11 Sheets
M

SCALE: 1 INCH = 5 FEET.



Dated this 10th day of December 1968

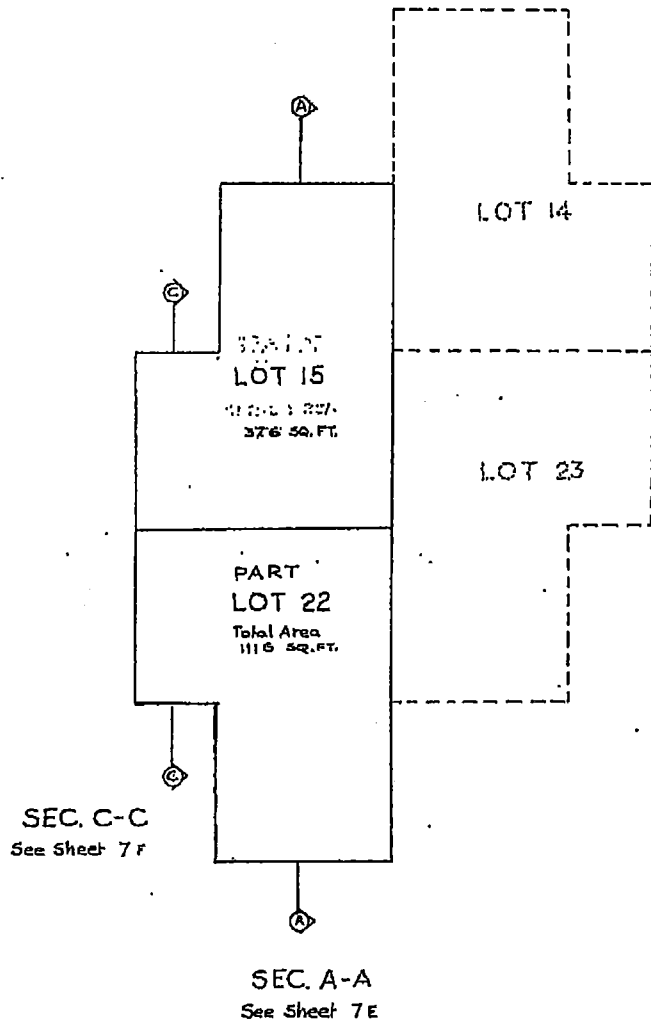

ELECTRICAL

37-47

BUILDING "E"
3RD LEVEL

Sheet 7 D of 11 Sheets
MR

SCALE: 1 INCH = 8 FEET



Dated this 10th day of December 1968

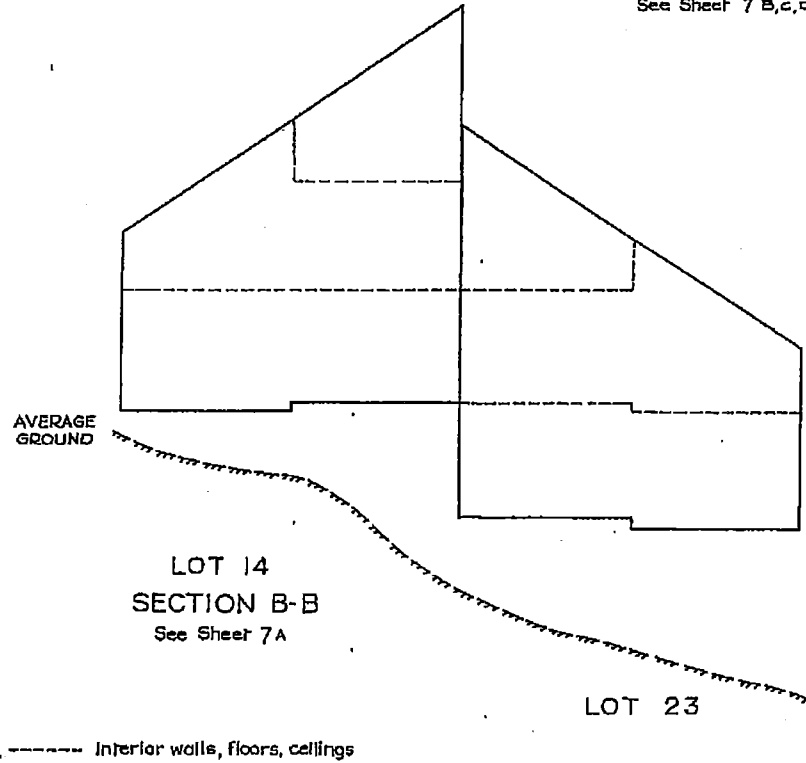
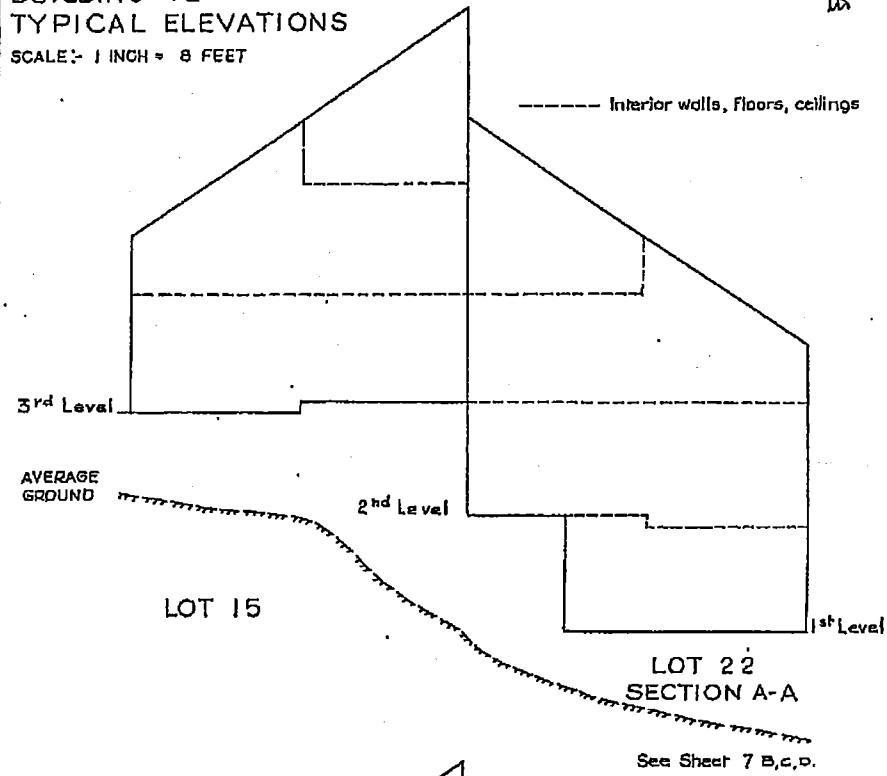
[Signature]
B.C.L.S.
37-67

BUILDING 'E'
TYPICAL ELEVATIONS

Sheet 7e of 11 Sheets

SCALE: 1 INCH = 8 FEET

----- Interior walls, floors, ceilings

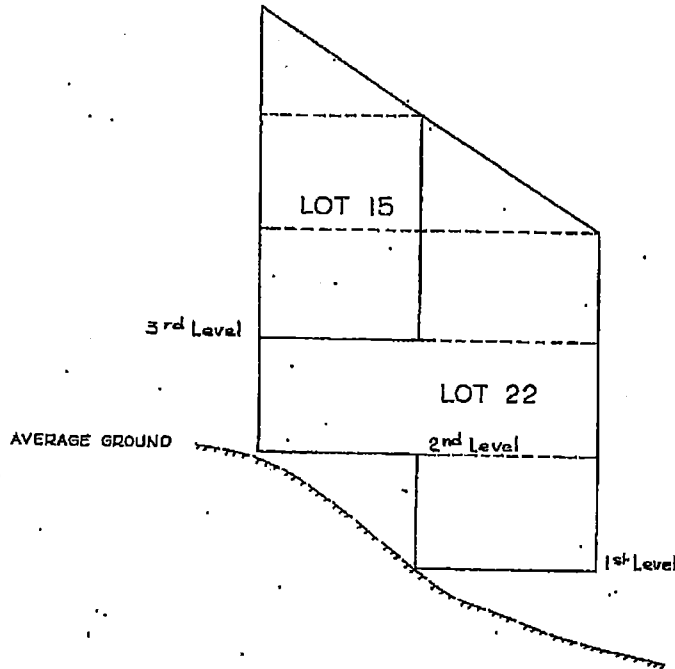


Dated this 10th day of December 1968

[Signature]
B.C.L.S.
37-67

BUILDING "E"
TYPICAL ELEVATIONS
SCALE 1/8" = 8 FEET

Sheet 7 of 11 Sheets
MK



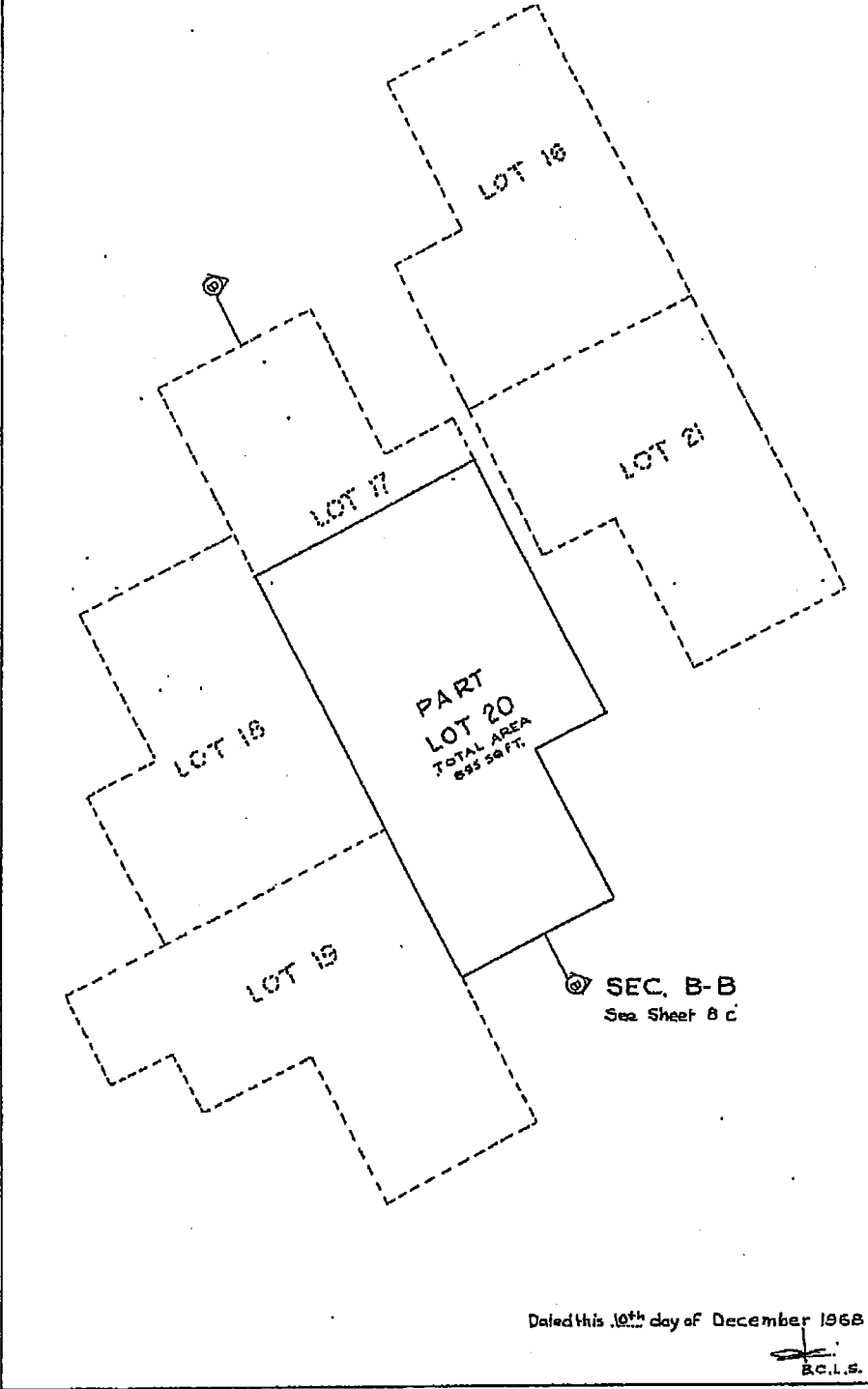
SECTION C-C
See Sheet 7 B, C, D.

Dated this 10th day of December 1968

[Signature]
B.C.L.S.

BUILDING "F"
LOWER LEVEL
SCALE - 1 INCH = 8 FEET.

Sheet 8 B of 11 Sheets
W

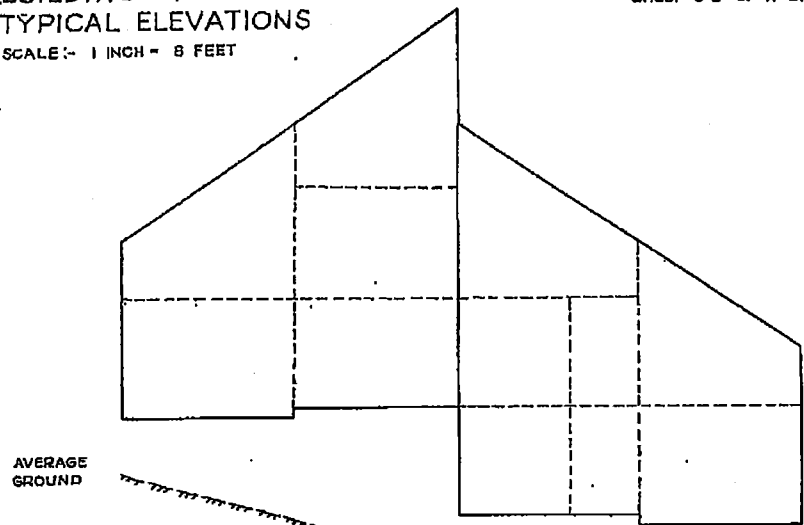


Dated this 10th day of December 1968

B.C.I.S.

BUILDING "F"
TYPICAL ELEVATIONS
SCALE: 1 INCH = 8 FEET

Sheet 8 of 11 Sheets
MK



AVERAGE
GROUND

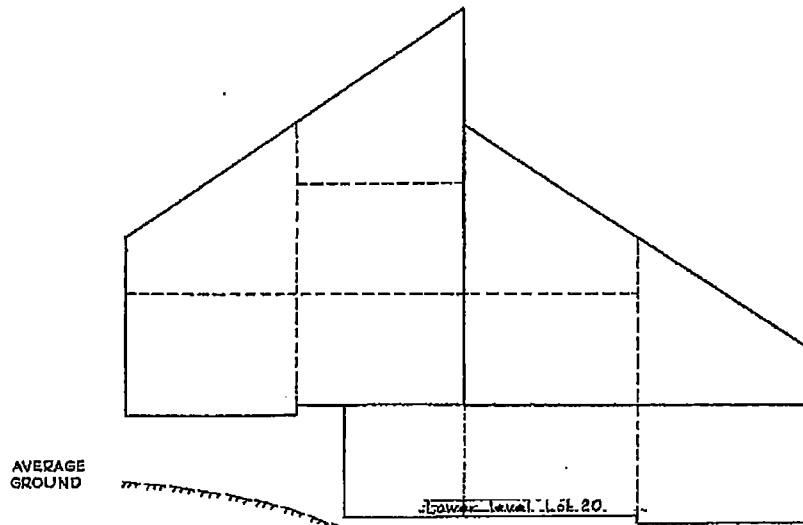
LOT 18

LOT 19

SECTION A-A

See Sheet 8 A

-----Interior walls, floors, ceilings



AVERAGE
GROUND

LOT 17

LOT 20

SECTION B-B

See Sheet 8 A, B

-----Interior walls, floors, ceilings

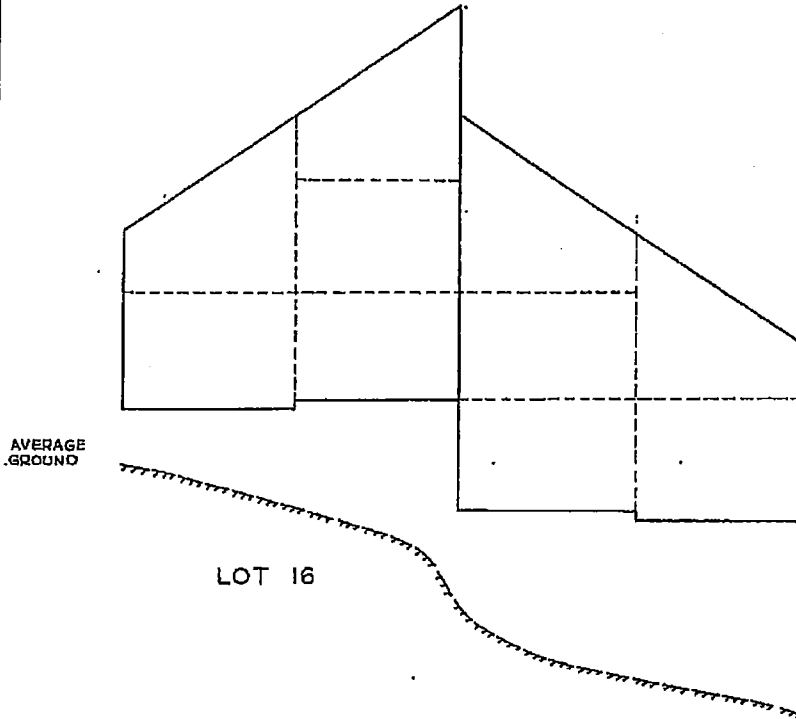
Dated this 10th day of December 1968

B.C.L.S.

VR2

BUILDING "F"
TYPICAL ELEVATIONS
SCALE: 1 INCH = 8 FEET

Sheet 8 D of 11 Sheets
JW



AVERAGE
GROUND

LOT 16

LOT 21

SECTION C-C

See Sheet 8 A

----- Interior walls, floors, ceilings

Dated this 10th day of December, 1968


B.C.L.S.

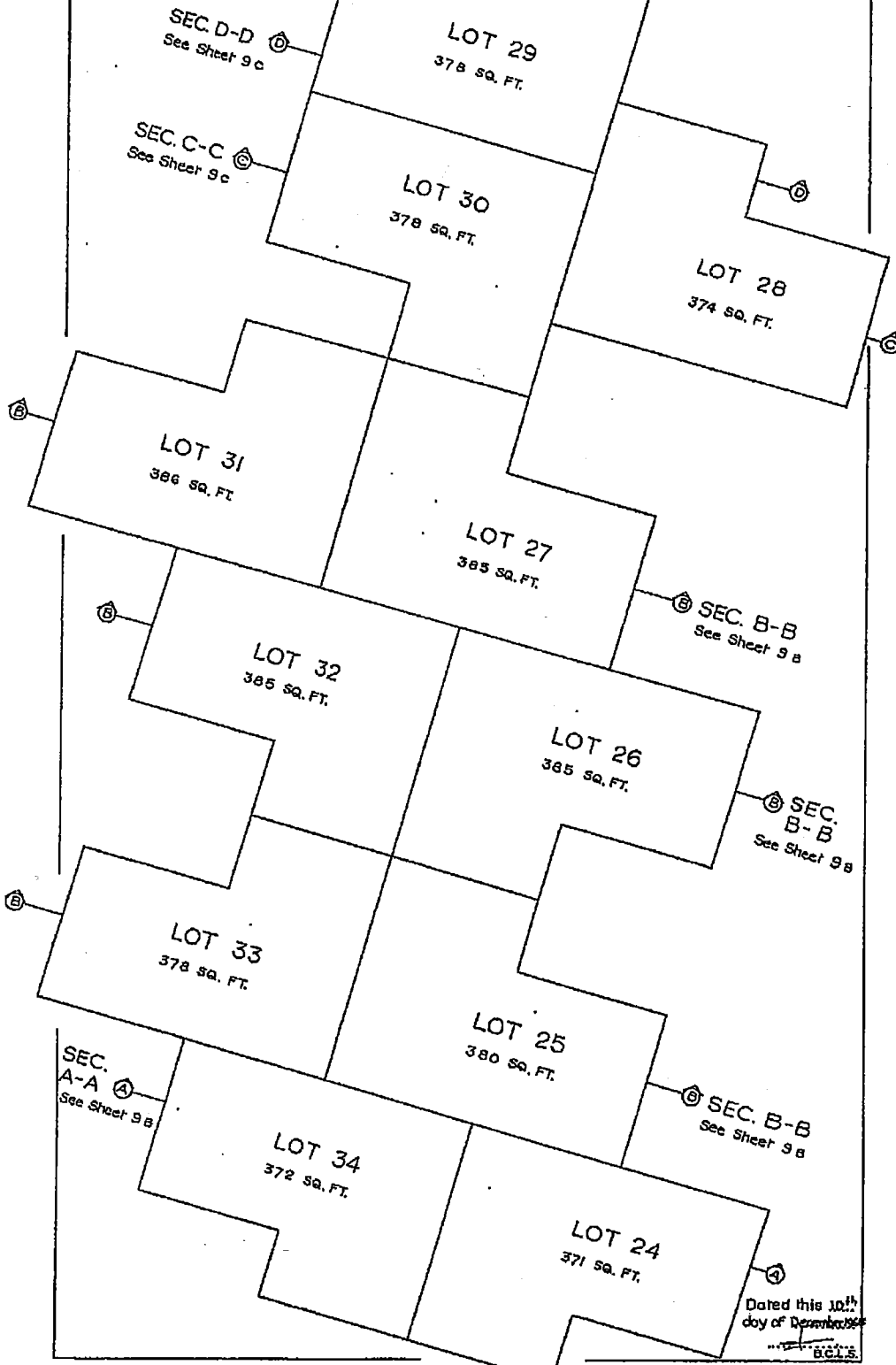
37-67

VR2

Sheet 9 A of 11 Sheets
AM

BUILDING "G"

SCALE: 1 INCH = 8 FEET



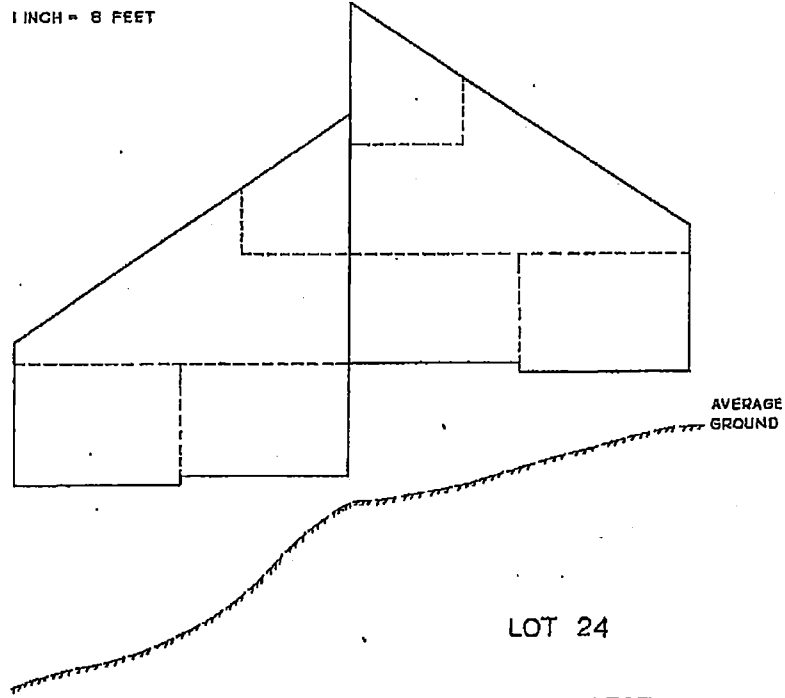
Dated this 10th day of December 1966

B.C.L.S.
37-67

BUILDING "G"
TYPICAL ELEVATIONS

Sheet 9 B of 11 Sheets
16

SCALE: 1 INCH = 8 FEET

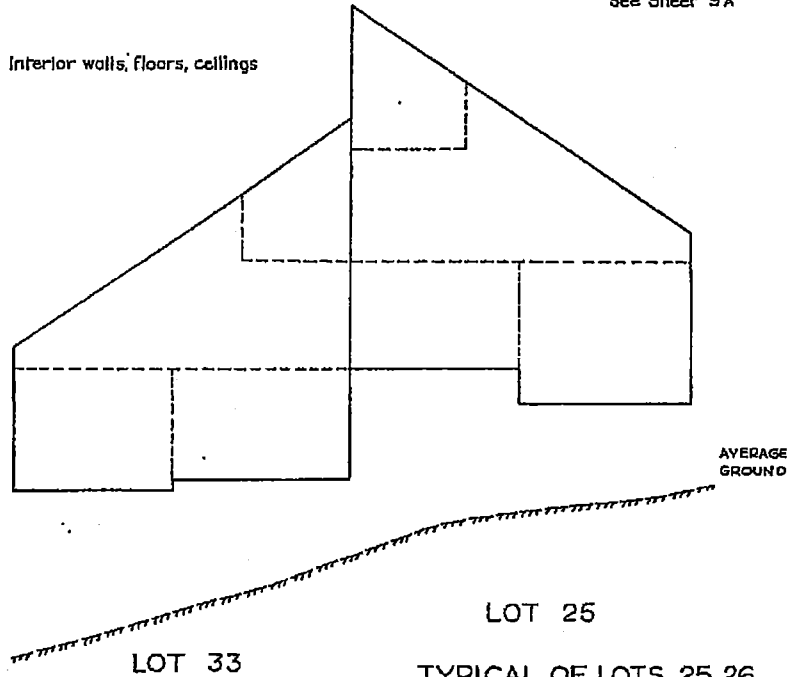


LOT 34

LOT 24

SECTION A-A
See Sheet 9A

--- Interior walls, floors, ceilings




LOT 33

LOT 25

TYPICAL OF LOTS 25, 26,
27, 31, 32 AND 33

— SECTION B-B
See Sheet 9A

Dated this 10th day of December, 1968

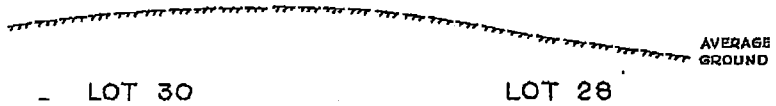
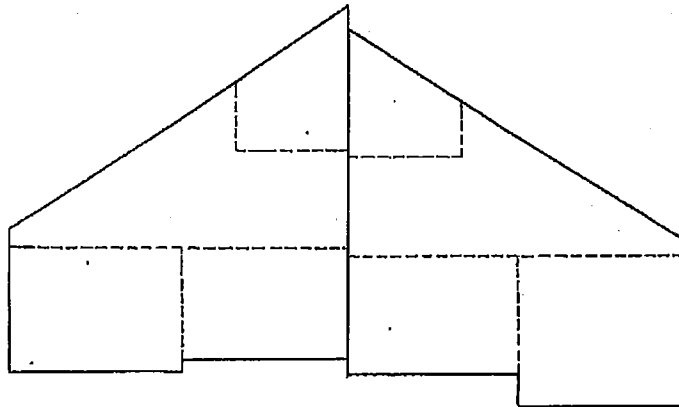

B.C.L.S.

VR2

BUILDING "G"
TYPICAL ELEVATIONS

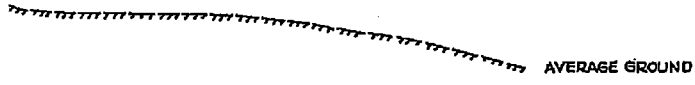
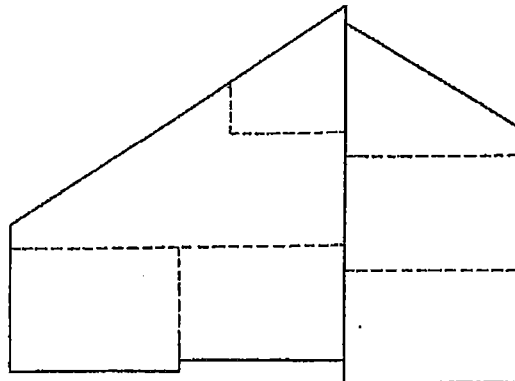
Sheet 9 c of 11 Sheets
M

SCALE:- 1 INCH = 8 FEET



SECTION C-C
See Sheet 9 A

----- Interior walls, Floors, ceilings



SECTION D-D
See Sheet 9 A

Dated this 21st day of December, 1968

B.C.L.S.
37-67

