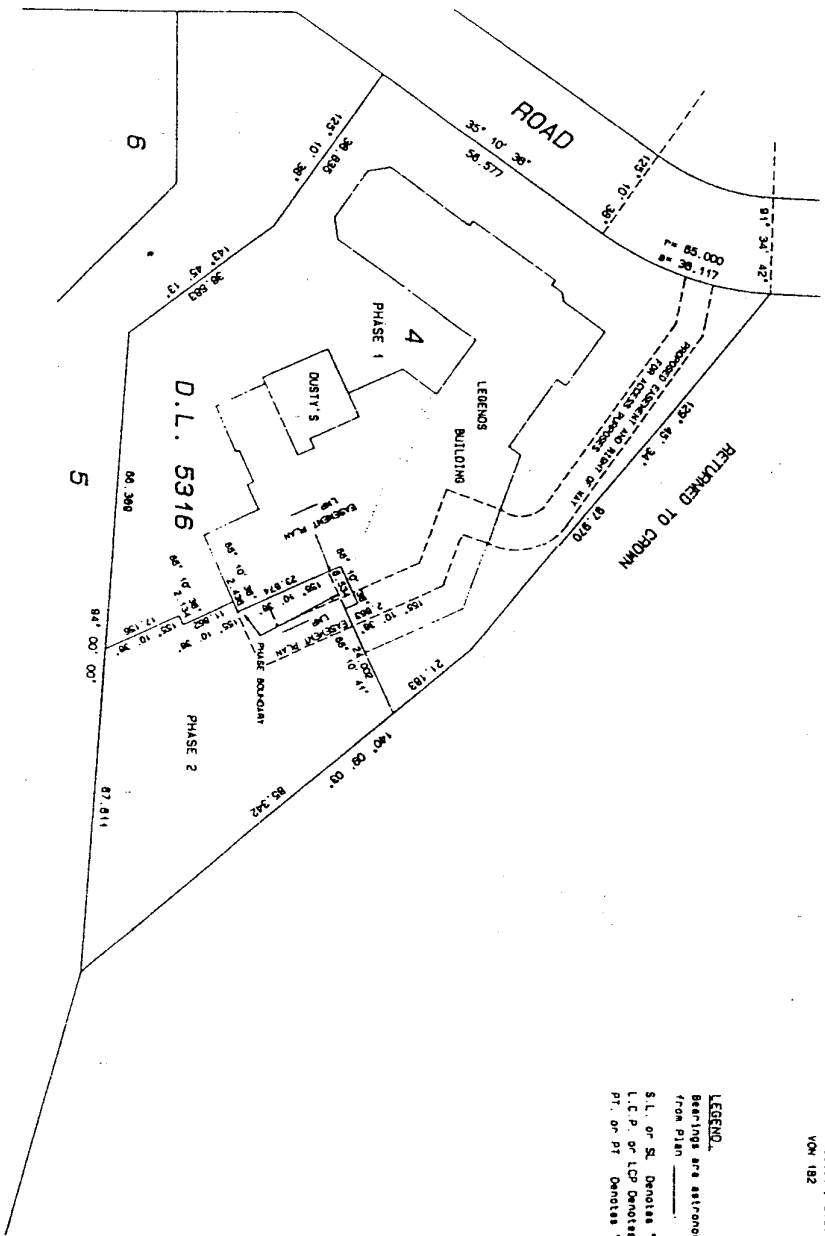
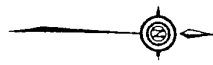


**PROPOSED PHASE 1, STRATA PLAN  
OF LOT 4, BK. A, D.L. 5316,  
PLAN GP. 1, N.W.D.**

Resort Municipality of Whistler  
B.C.S. 92 J 006 3.3

SCALE: 1:1,750  
ALL DISTANCES SHOWN ARE IN METRES



Sheet # of 11 sheets.  
STRATA PLAN  
LMS 4369

Strata Plan \_\_\_\_\_ deposited and  
registered in the Land Title Office at  
New Westminster, B.C. this \_\_\_\_\_ day of  
..... 2000.

Deputy Registrar  
DALE ANDERSON LTD.  
2350 London Lane,  
Whistler, B.C.  
V0N 1B2

**LEGEND.**  
Bearings are astronomic and are derived  
from Plan \_\_\_\_\_  
S.L. or S. Denotes 'Strata Lot'  
L.C.P. or LCP Denotes 'Limited Common Property'  
PT. or PT. Denotes 'Part' or 'Part of'

EXHIBIT B.1

L.P.L.L. Bannock, a British Columbia Land Surveyor,  
certifies that the boundary lines shown on this plan  
were measured and laid out in accordance with the  
provisions of the Land Survey Act, Chapter 48, R.S.O.  
1990, and the regulations thereunder, and that the plan  
is the subject of the stated plan.  
February 8, 2000.

S.C.L.S.

L.P.L.L. Bannock, a British Columbia Land Surveyor,  
certifies that the building boundaries and setbacks  
shown on this plan were measured and laid out in  
accordance with the provisions of the Building Act,  
Chapter 47, R.S.O. 1990, and the regulations thereunder,  
and that the plan is the subject of the stated plan.  
February 8, 2000.

S.C.L.S.

NOTICE UNDER SECTION 84(1) OF THE STRATA PROPERTY ACT, STRATA LOT BOUNDARIES  
ARE DEFINED AS THE EXTENSION OF THE EXISTING WALLS, THE EXISTING FACE  
OF THE EXISTING WALLS, THE EXISTING FACE OF THE EXISTING WALLS AND THE EXISTING FACE  
OF THE EXISTING WALLS BETWEEN STRATA UNITS.

DALE ANDERSON LTD.  
'SQUAMISH-HALFLORET' REGIONAL DISTRICT

BANNOCK AND ASSOCIATES  
PROFESSIONAL LAND SURVEYORS  
SQUAMISH AND WHISTLER, B.C.

FILE # 9823000. S-10171-1

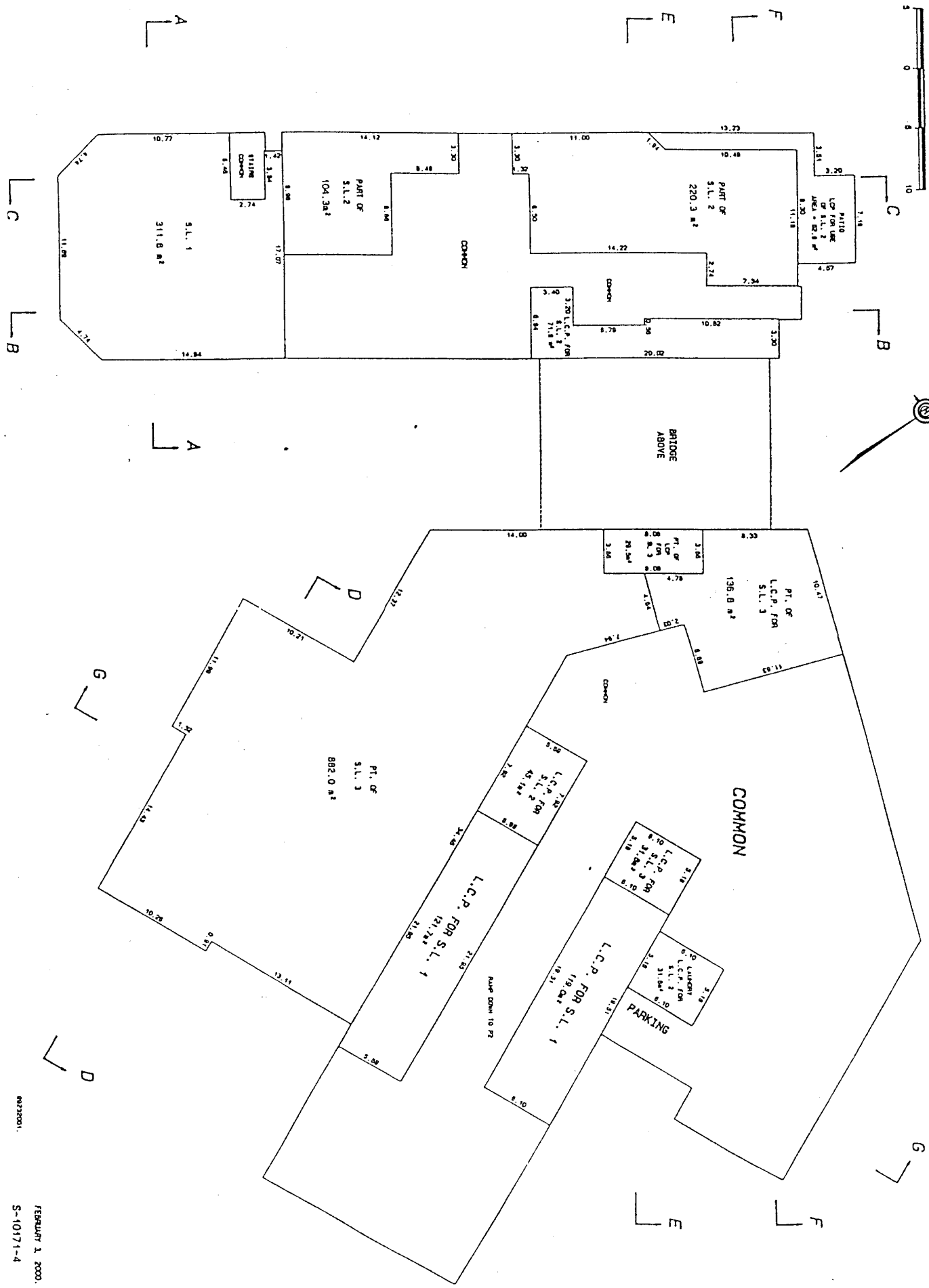
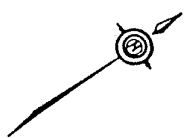




SCALE: 1:200  
 ALL DISTANCES SHOWN ARE IN METRES

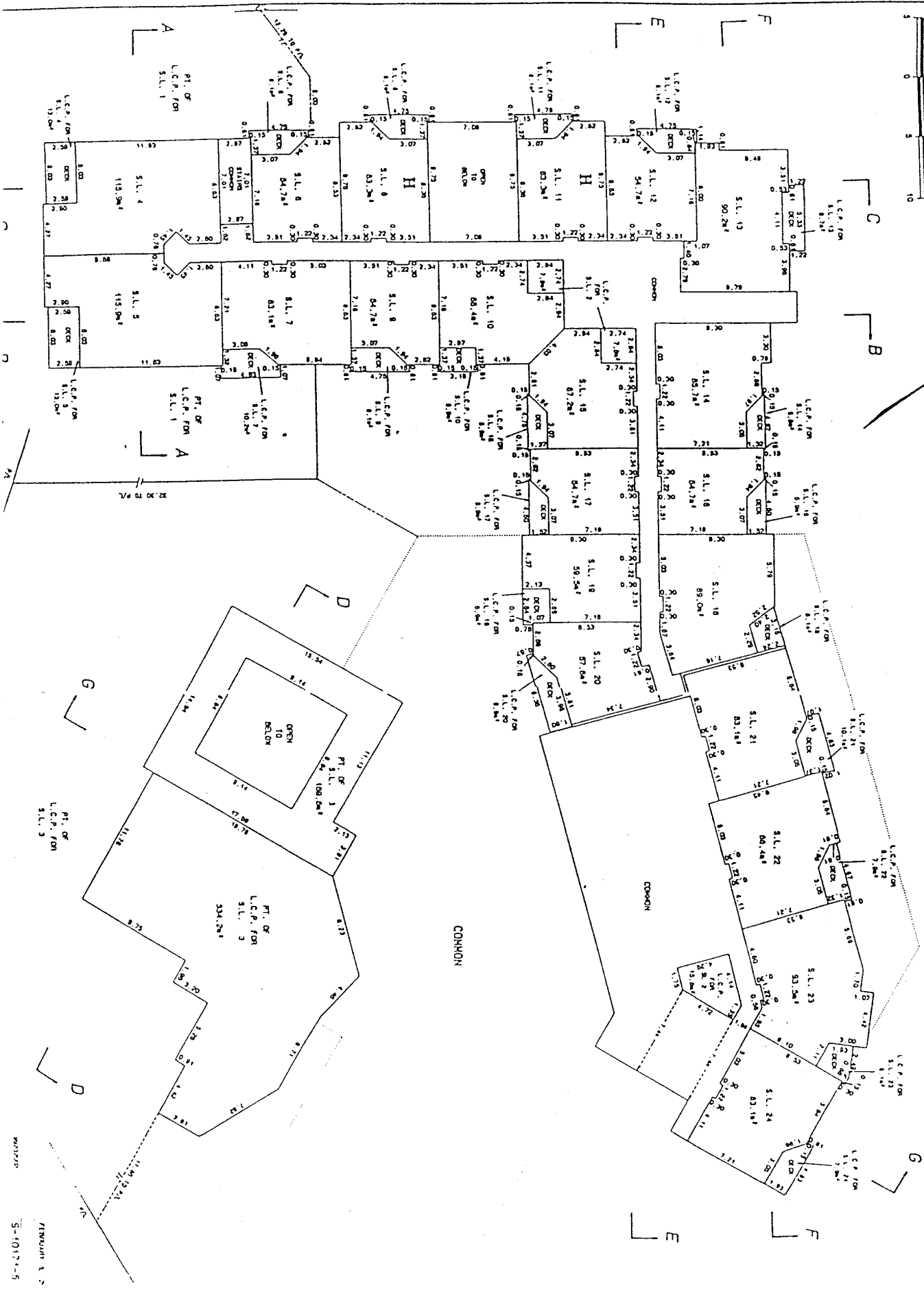
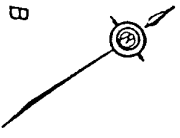


STRATA PLAN  
 LMS



LEVEL TWO

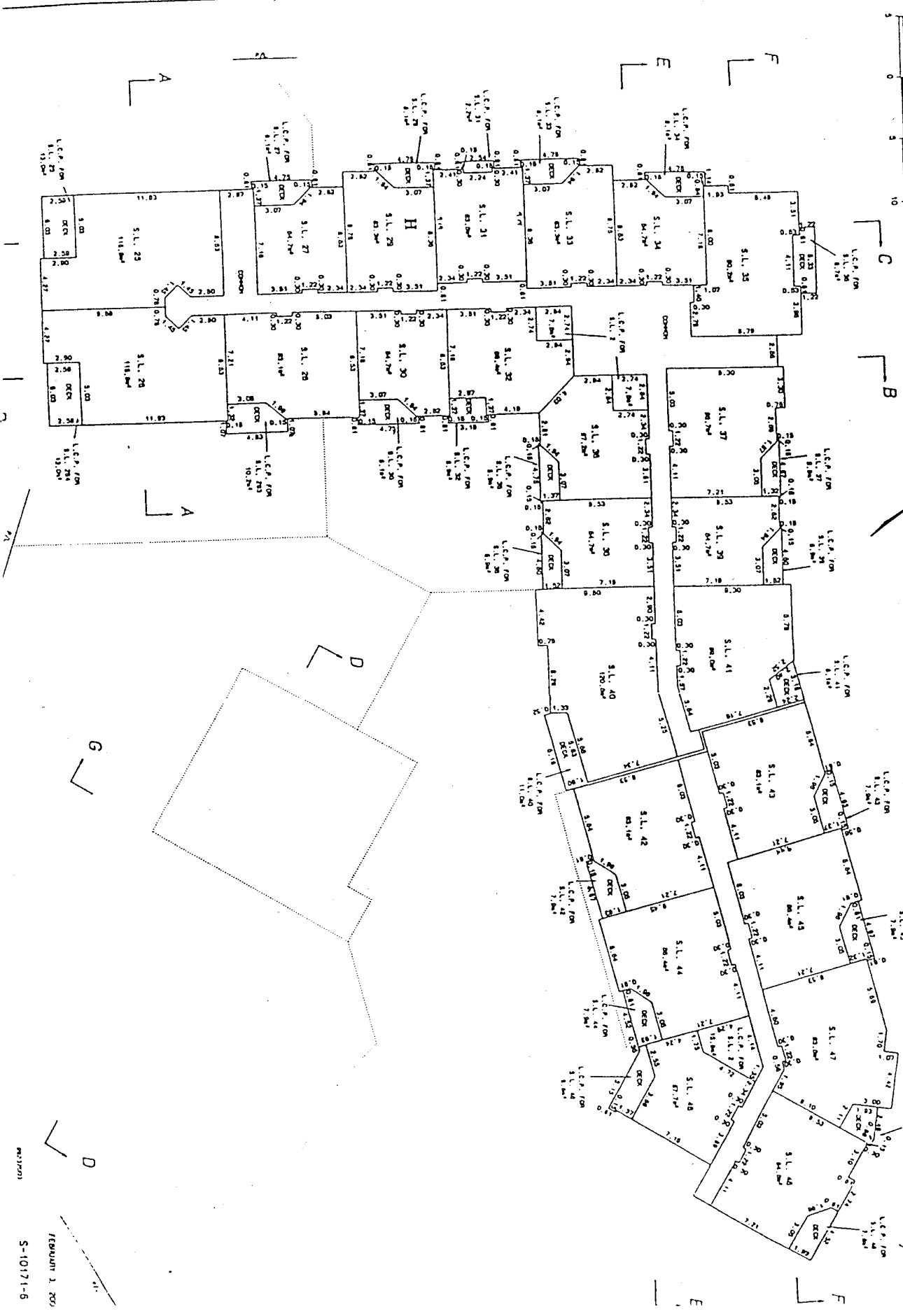
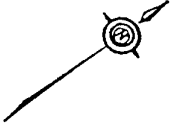
SCALE: 1:200  
ALL DISTANCES SHOWN ARE IN METRES



STRATA PLAN  
LMS

LEVEL THREE

SCALE: 1:1,000  
ALL DISTANCES SHOWN ARE IN METRES



STRATA PLAN  
LMS

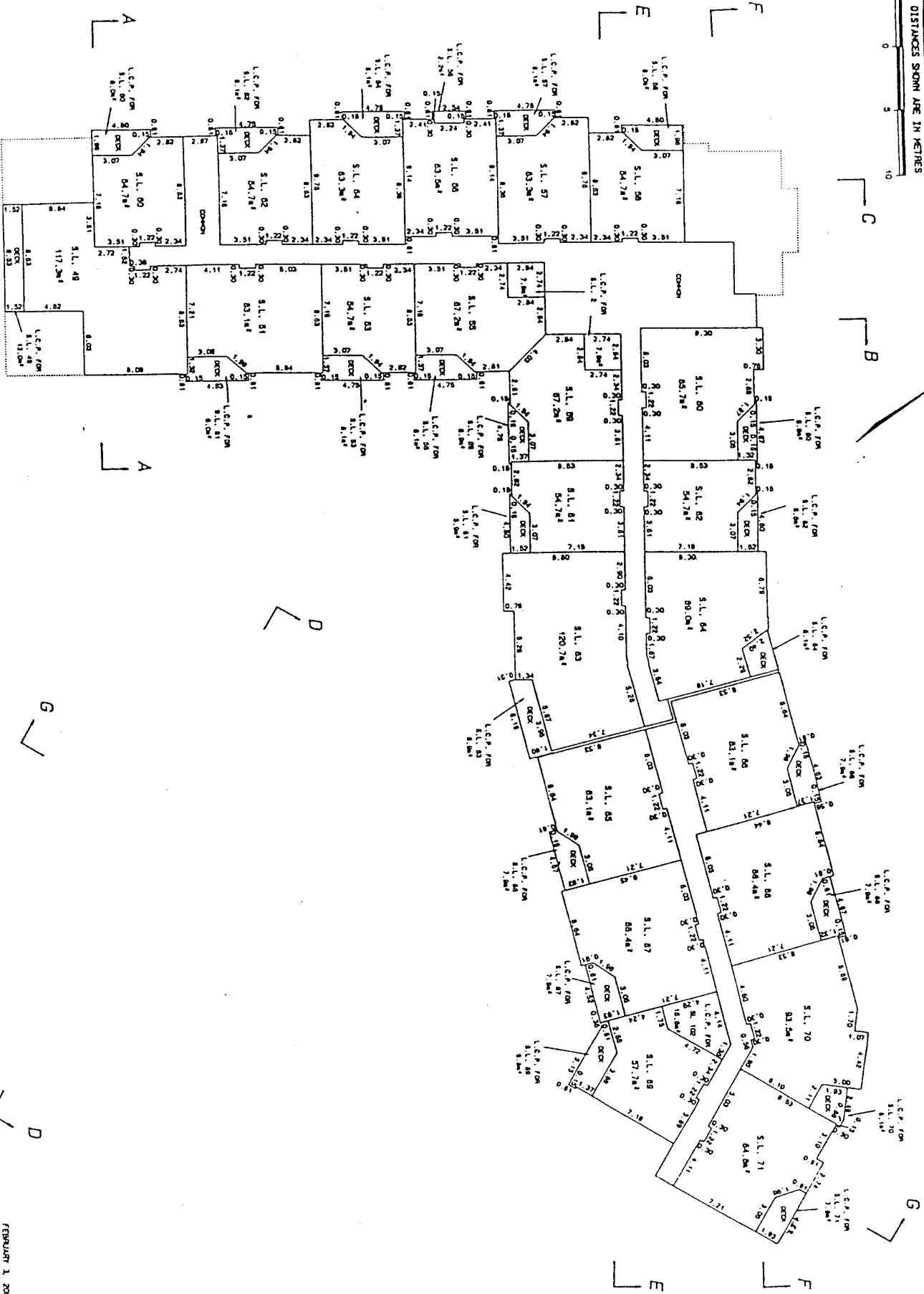
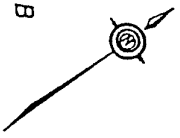
FIG 8 C

FORMBANK 1, 200

S-10171-6

LEVEL FOUR:

SCALE: 1:1,200  
ALL DISTANCES SHOWN ARE IN METERS



STRATA PLAN  
LMS

Sheet 7 of 11 sheets

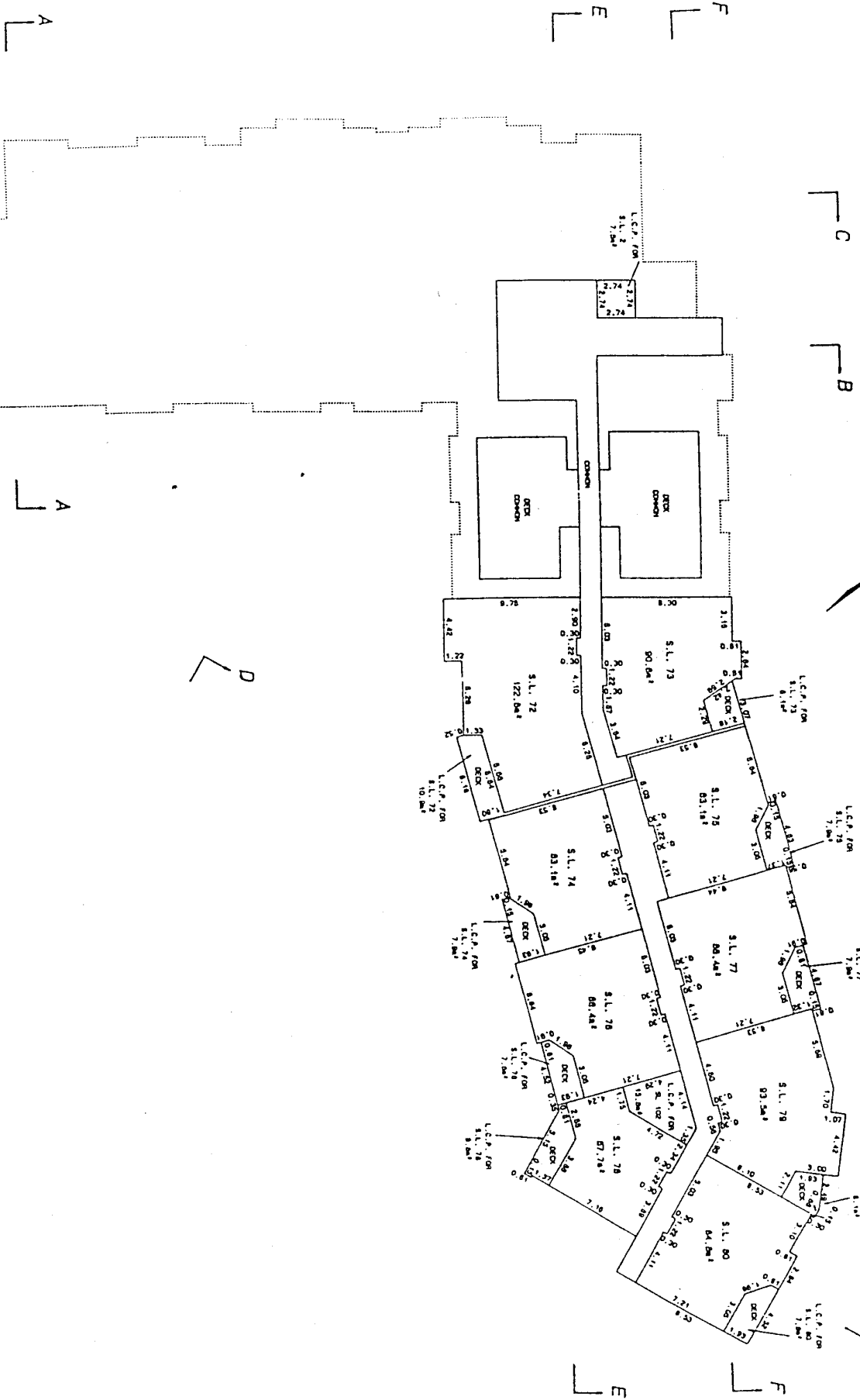
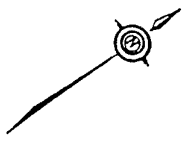
FEBRUARY 1, 2000

88273004

S-10171-

LEVEL FIVE

SCALE: 1:1,000  
ALL DISTANCES SHOWN ARE IN METRES



STRATA PLAN  
LMS

TT 100

02/2/2004

FEBRUARY 1, 2004  
S-10171-B









**PROPOSED PHASE 2 STRATA PLAN  
OF LOT 4, BK. A, D.L. 5316,  
PLAN LMP GP. 1, N.W.D.**

Sheet 1 of 12 Sheets  
STRATA PLAN  
**LMS**

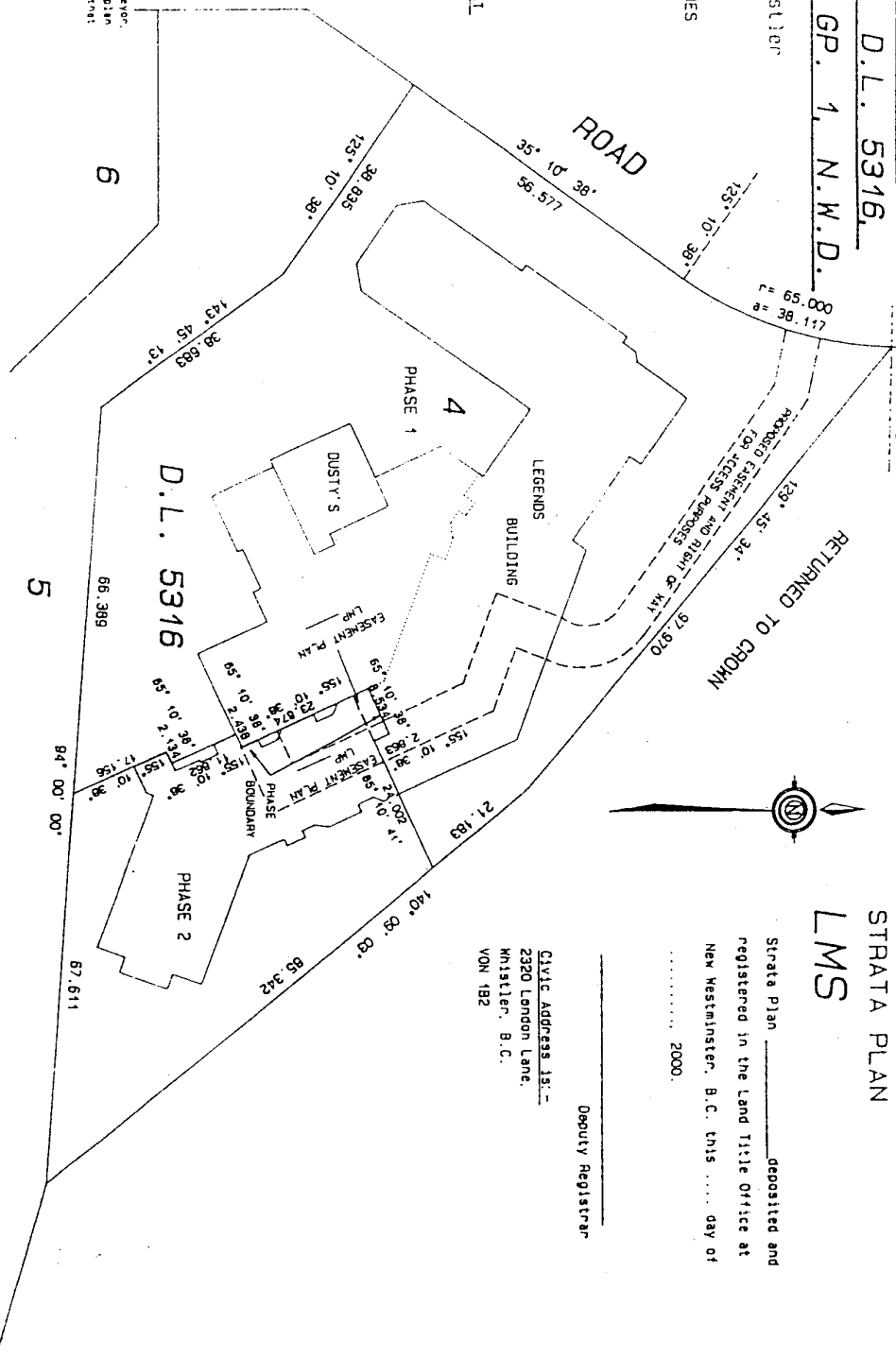
Hosori Municipality of Whistler  
B.C.G.S. 92) 006.3.3  
SCALE: 1:750  
ALL DISTANCES SHOWN ARE IN METRES  
10 5 0 10 20 30

THIS PLAN LIES WITHIN THE  
"SQUAMISH-LILLOET" REGIONAL DISTRICT

I, P.A.T. Bunbury, a British Columbia Land Surveyor,  
certify that the building shown on this strata plan  
are within the external boundaries of the land that  
is the subject of the strata plan.  
2000

B.C.L.S.  
I, P.A.T. Bunbury, a British Columbia Land Surveyor,  
certify that the building included in this strata  
plan have not, as of 2000  
been previously occupied.

B.C.L.S.



NOTICE UNDER SECTION 68 OF THE STRATA PROPERTY ACT: STRATA LOT BOUNDARIES  
ARE DEFINED AS THE EXTERIOR FACE OF EXTERIOR WALLS, THE EXTERIOR FACE  
OF INTERIOR WALLS ADJOINING COMMON AREAS AND THE CENTRE LINE OF  
DEMISING WALLS BETWEEN STRATA LOTS  
THIS PLAN CONTAINS LIMITED COMMON PROPERTY AS DEFINED UNDER  
SECTION 1 OF THE STRATA PROPERTY ACT

**LEGEND.**  
Bearings are astronomic and are derived  
from Plan LMP  
S.L. or SL Denotes 'Strata Lot'  
L.C.P. or LCP Denotes 'Limited Common Property'  
P.T. or PT Denotes 'part' or 'part of'

BUNBURY AND ASSOCIATES  
PROFESSIONAL LAND SURVEYORS  
SQUAMISH AND WHISTLER, B.C.  
FILE # 99232400. S-10172-1

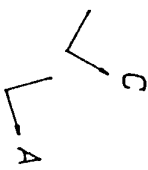
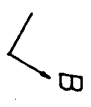
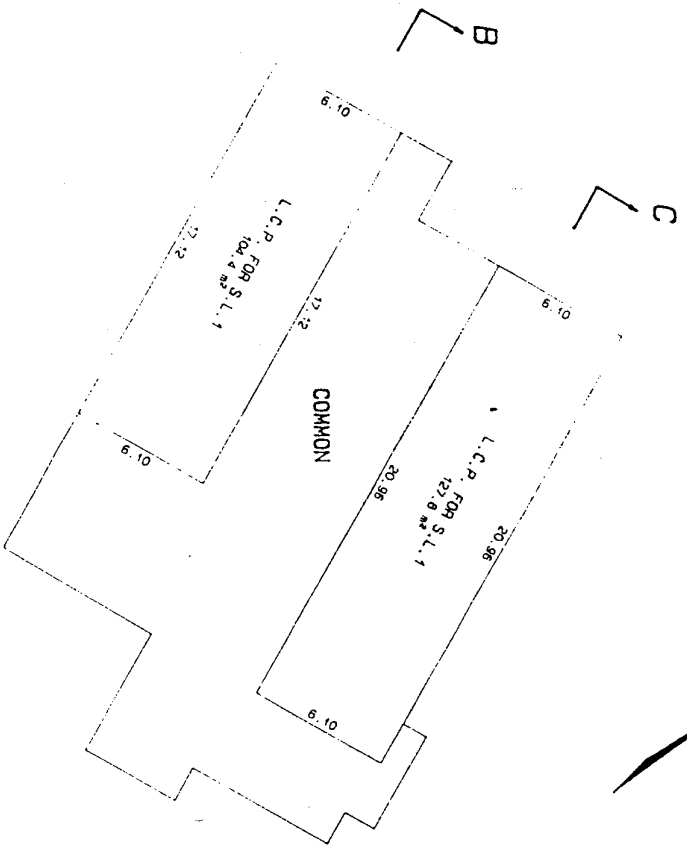
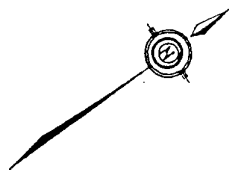
CLYDE ADDRESS JS.  
2320 London Lane,  
Whistler, B.C.  
V0N 1B2  
Deputy Registrar

Strata Plan \_\_\_\_\_ deposited and  
registered in the Land Title Office at  
New Westminster, B.C. this ..... day of  
..... 2000.



PARKING LEVEL:

SCALE: 1:200  
ALL DISTANCES SHOWN ARE IN METRES



STRATA PLAN  
LMS

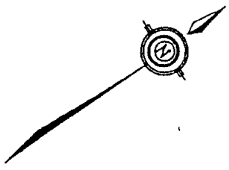
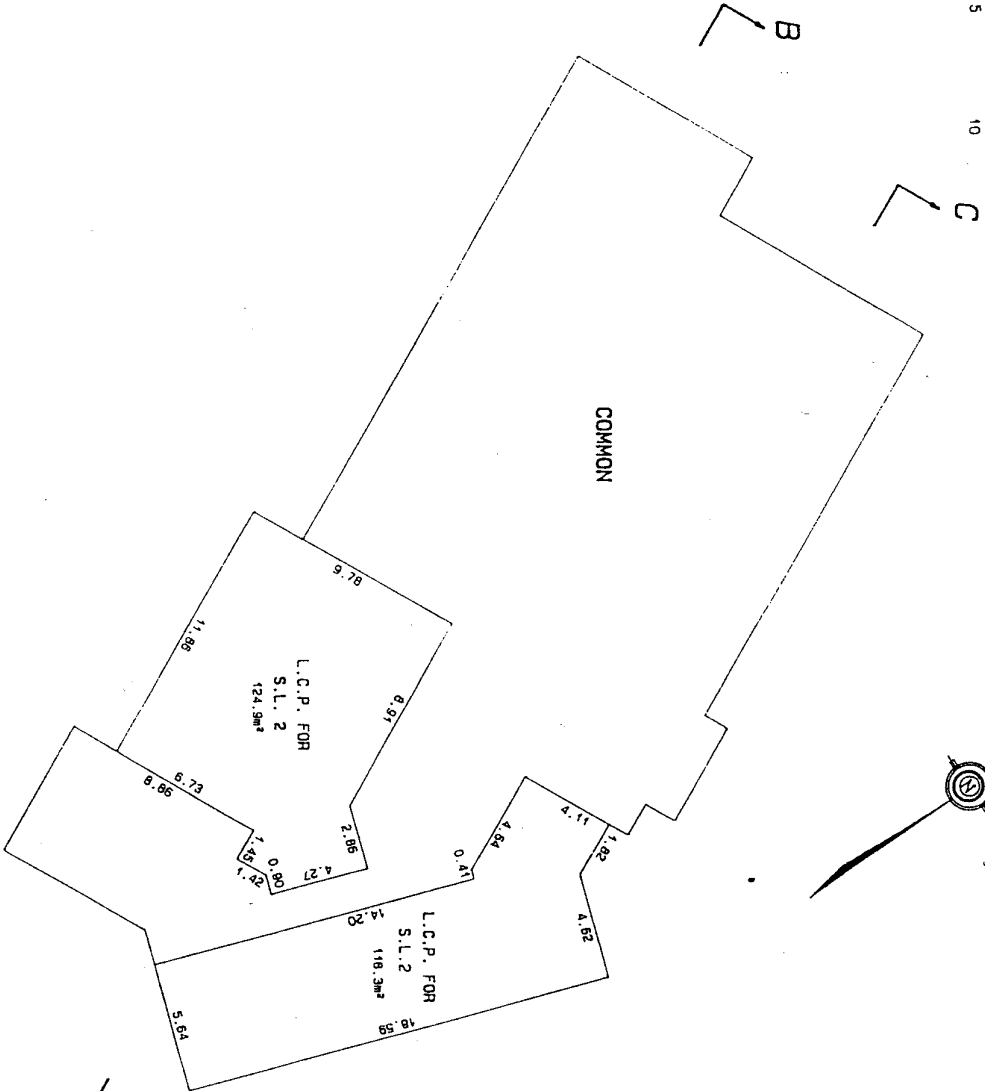
SHEET 3 OF 12 SHEETS

99232401

SEPTEMBER 27, 2000.  
S-10172-3

MAIN LEVEL:

SCALE : 1 : 200  
ALL DISTANCES SHOWN ARE IN METRES



STRATA PLAN  
LMS

SHEET 4 OF 12 SHEETS

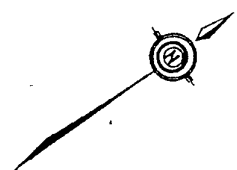
99232402

SEPTEMBER 27, 2000.

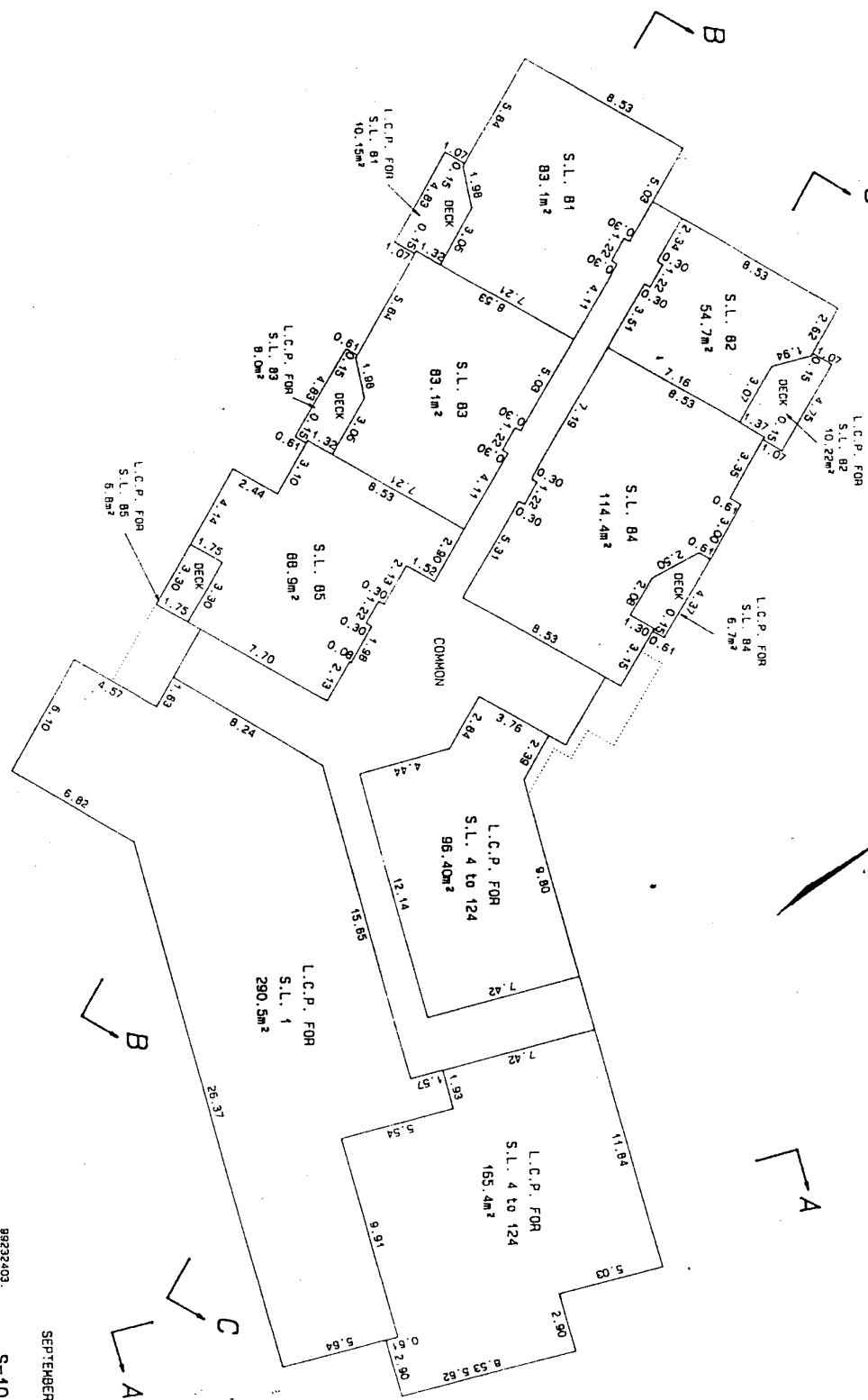
S-10172-4

LEVEL TWO:

SCALE: 1:200  
ALL DISTANCES SHOWN ARE IN METRES



STRATA PLAN  
LMS



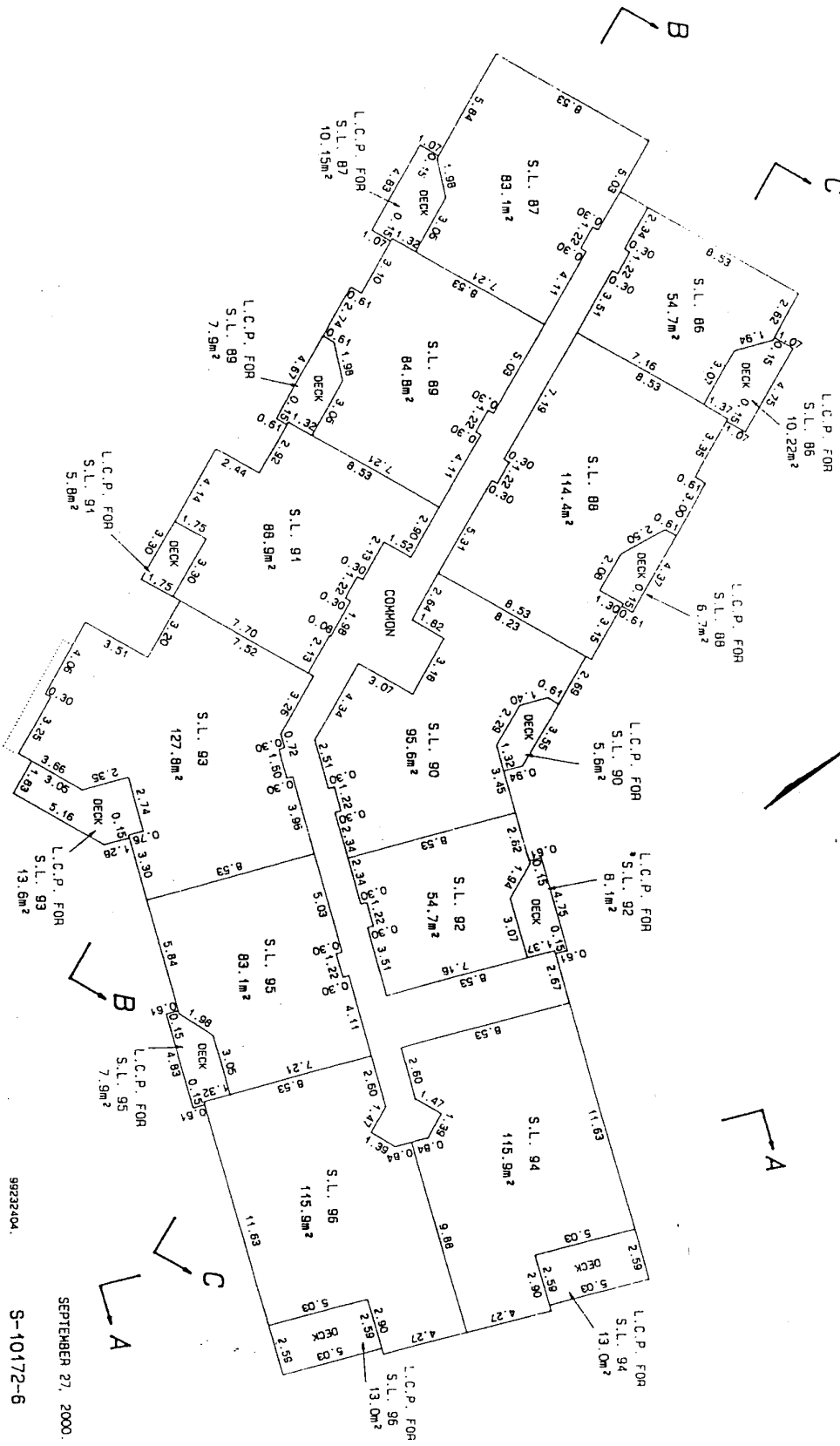
98232403  
S-10172-5

SEPTEMBER 27, 2000.



LEVEL THREE:

SCALE: 1:200  
ALL DISTANCES SHOWN ARE IN METRES



STRATA PLAN  
LMS

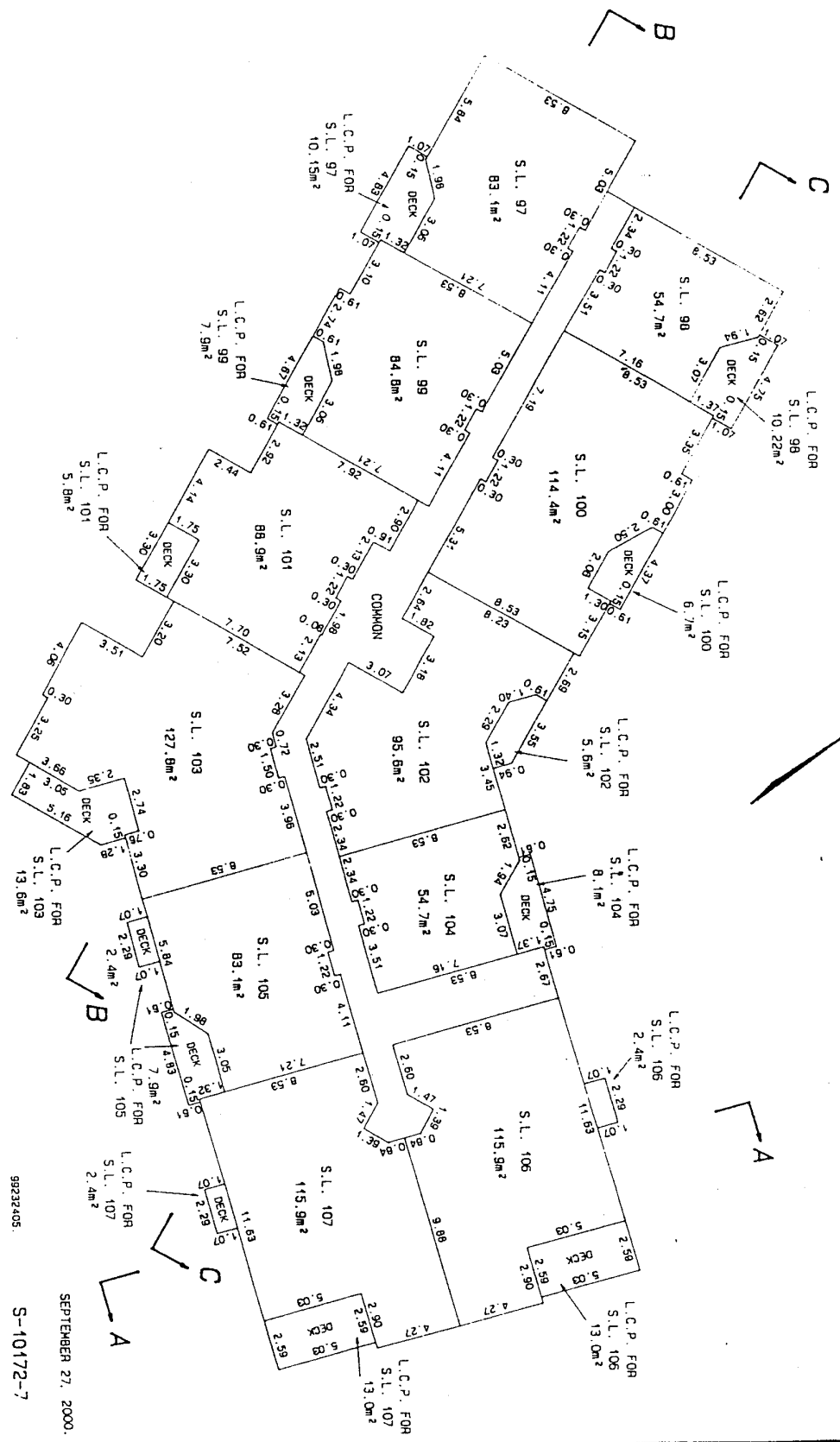
99232404

SEPTEMBER 27, 2000.

S-10172-6

LEVEL FOUR:

SCALE: 1:200  
ALL DISTANCES SHOWN ARE IN METRES



STRATA PLAN  
LMS

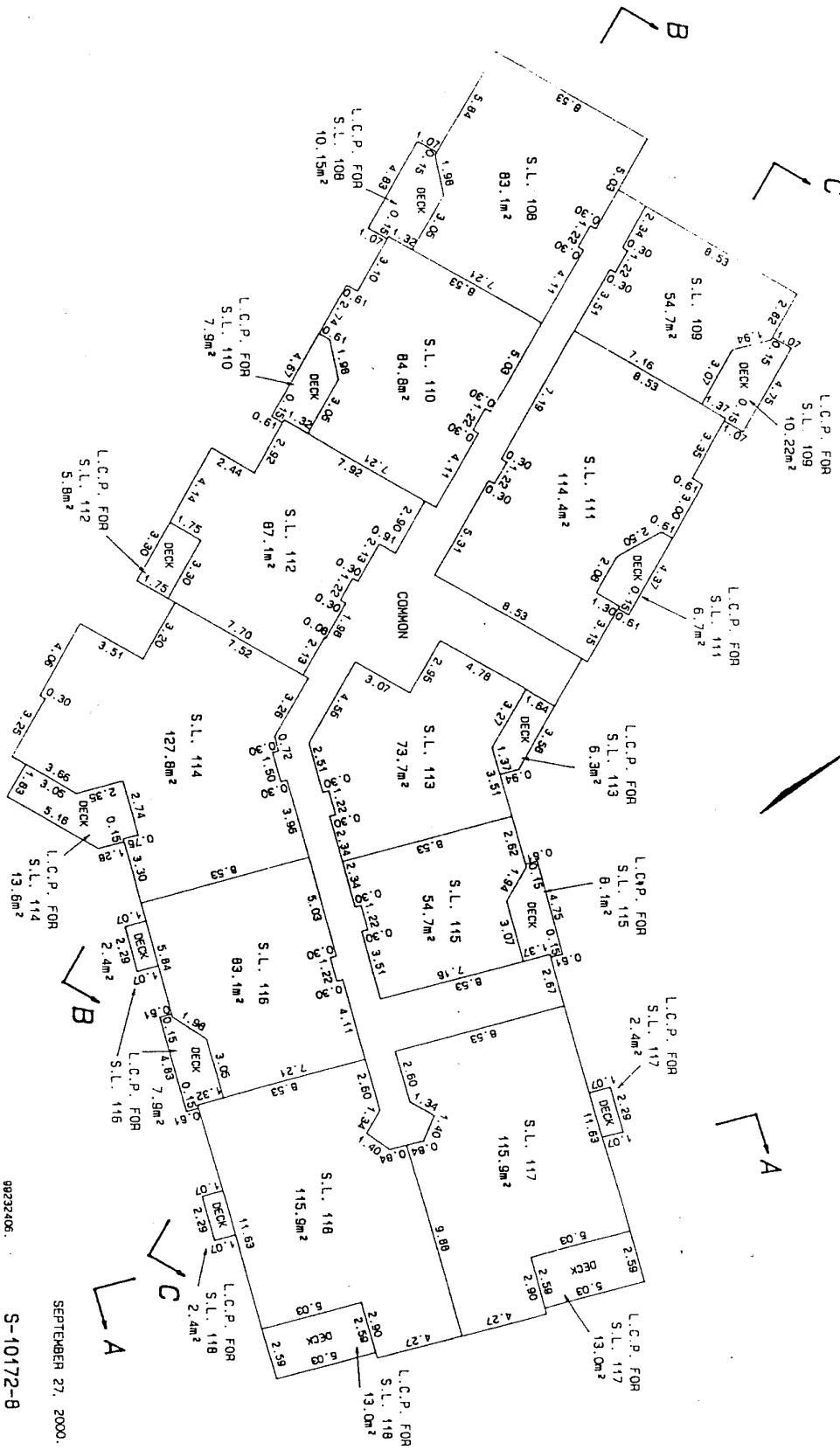
99232405.

SEPTEMBER 27, 2000.

S-10172-7

LEVEL FIVE:

SCALE: 1:200  
ALL DISTANCES SHOWN ARE IN METRES



SHEET 8 OF 12 SHEETS

STRATA PLAN  
LMS

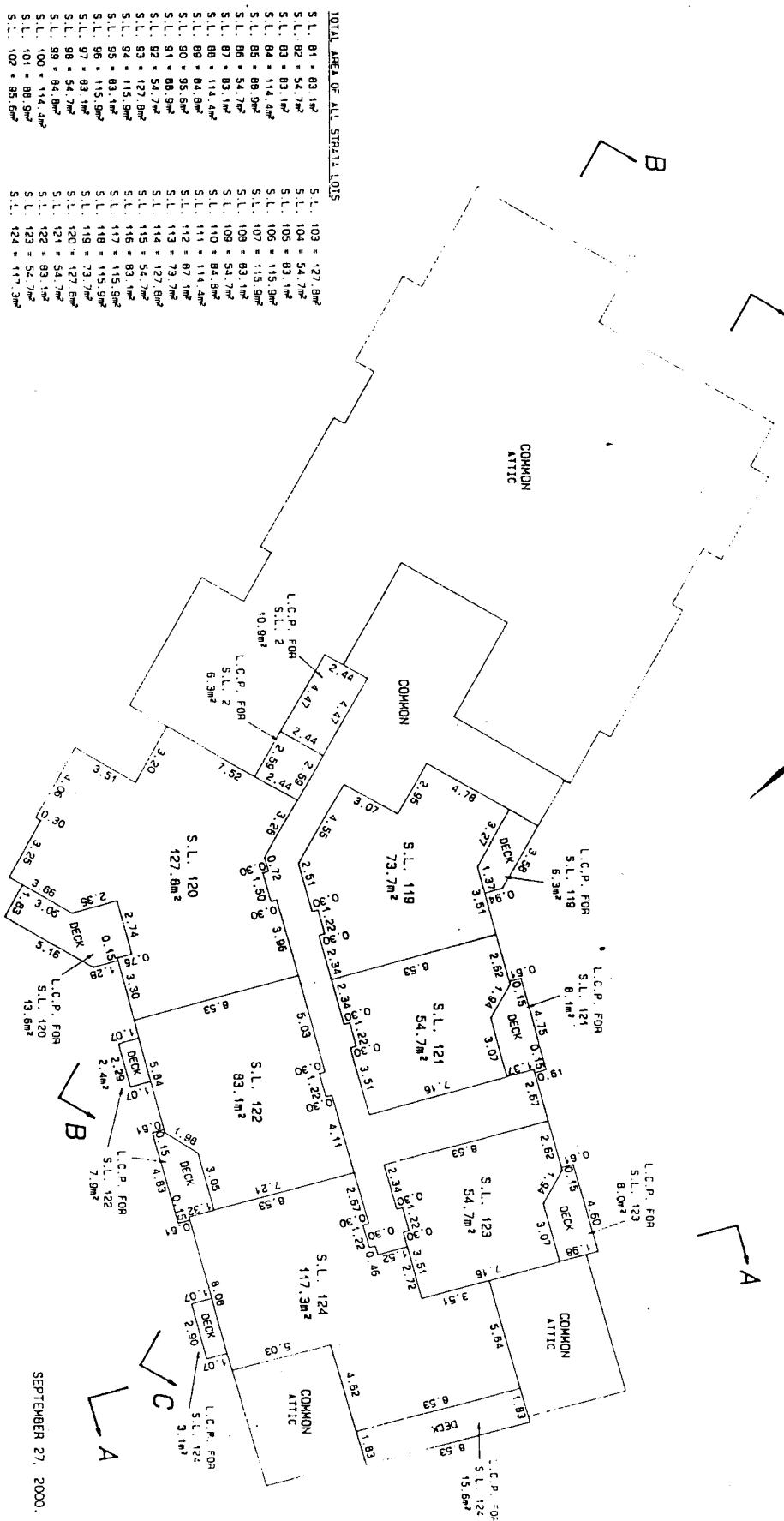
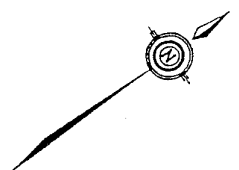
98232406.

S-10172-8

SEPTEMBER 27, 2000.

LEVEL SLX:

SCALE: 1:200  
ALL DISTANCES SHOWN ARE IN METRES



TOTAL AREA OF ALL STRATA LOTS

S.L. 81 = 83.1m²	S.L. 103 = 127.8m²
S.L. 82 = 54.7m²	S.L. 104 = 54.7m²
S.L. 83 = 83.1m²	S.L. 105 = 83.1m²
S.L. 84 = 114.4m²	S.L. 106 = 115.9m²
S.L. 85 = 89.9m²	S.L. 107 = 115.9m²
S.L. 86 = 54.7m²	S.L. 108 = 83.1m²
S.L. 87 = 83.1m²	S.L. 109 = 54.7m²
S.L. 88 = 114.4m²	S.L. 110 = 84.8m²
S.L. 89 = 84.8m²	S.L. 111 = 114.4m²
S.L. 90 = 95.6m²	S.L. 112 = 87.7m²
S.L. 91 = 88.9m²	S.L. 113 = 73.7m²
S.L. 92 = 54.7m²	S.L. 114 = 127.8m²
S.L. 93 = 127.8m²	S.L. 115 = 54.7m²
S.L. 94 = 115.9m²	S.L. 116 = 83.1m²
S.L. 95 = 83.1m²	S.L. 117 = 115.9m²
S.L. 96 = 115.9m²	S.L. 118 = 115.9m²
S.L. 97 = 83.1m²	S.L. 119 = 73.7m²
S.L. 98 = 54.7m²	S.L. 120 = 127.8m²
S.L. 99 = 84.8m²	S.L. 121 = 54.7m²
S.L. 100 = 114.4m²	S.L. 122 = 83.1m²
S.L. 101 = 88.9m²	S.L. 123 = 52.7m²
S.L. 102 = 85.1m²	S.L. 124 = 117.3m²

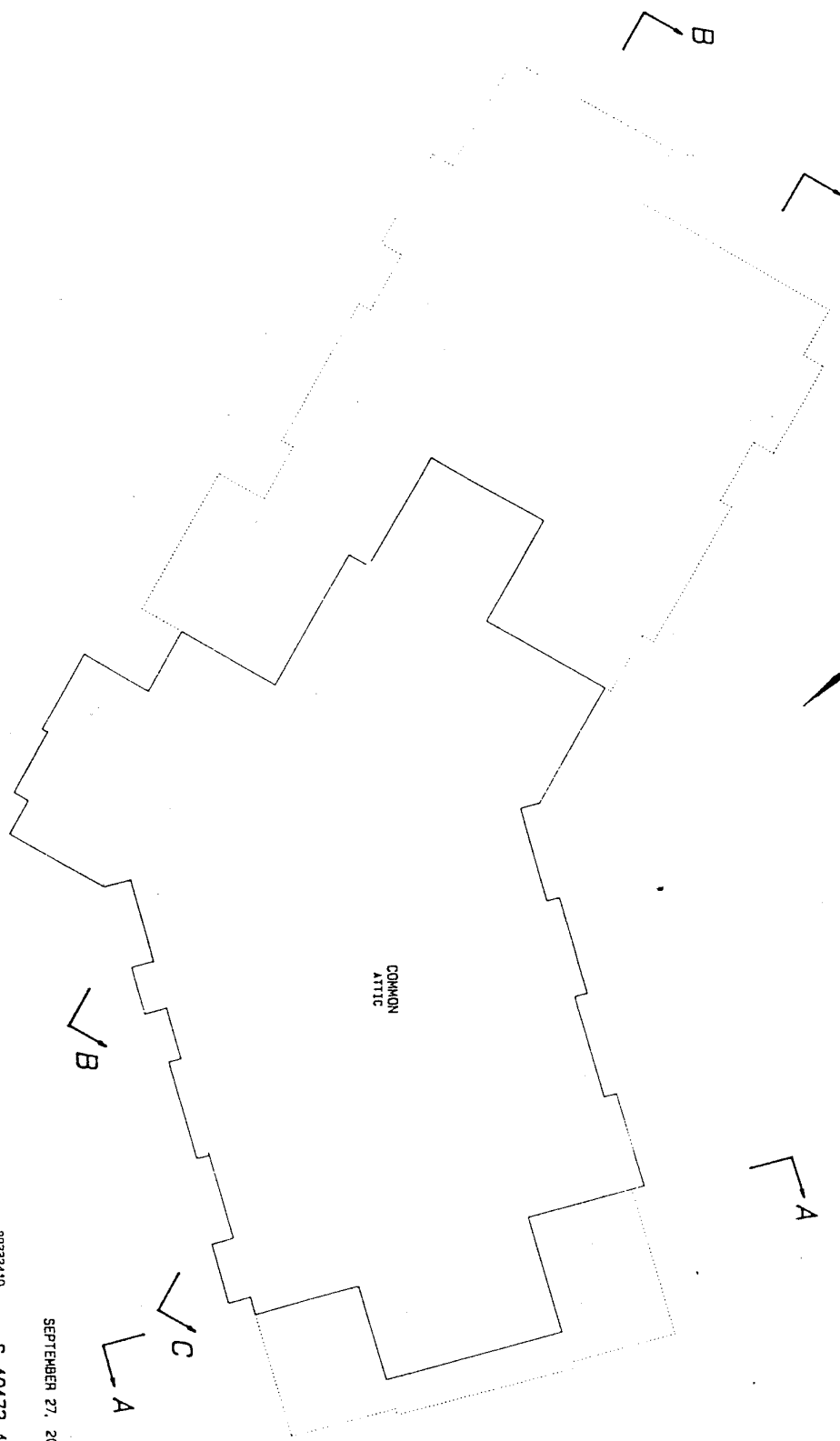
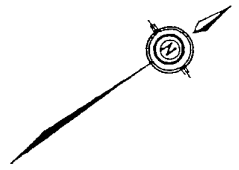
99232407. S-10172-9

SEPTEMBER 27, 2000.

STRATA PLAN  
LMS

ATTIC LEVEL :

SCALE : 1 : 200  
ALL DISTANCES SHOWN ARE IN METRES



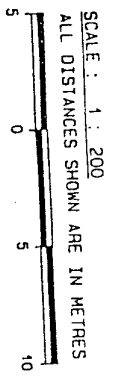
STRATA PLAN  
LMS

99232410.  
S-10172-10

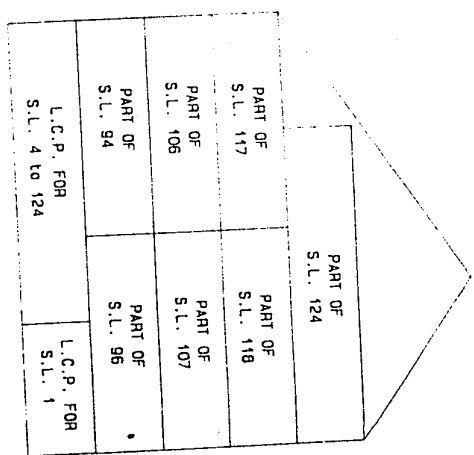
SEPTEMBER 27, 2000.

STRATA PLAN  
LMS

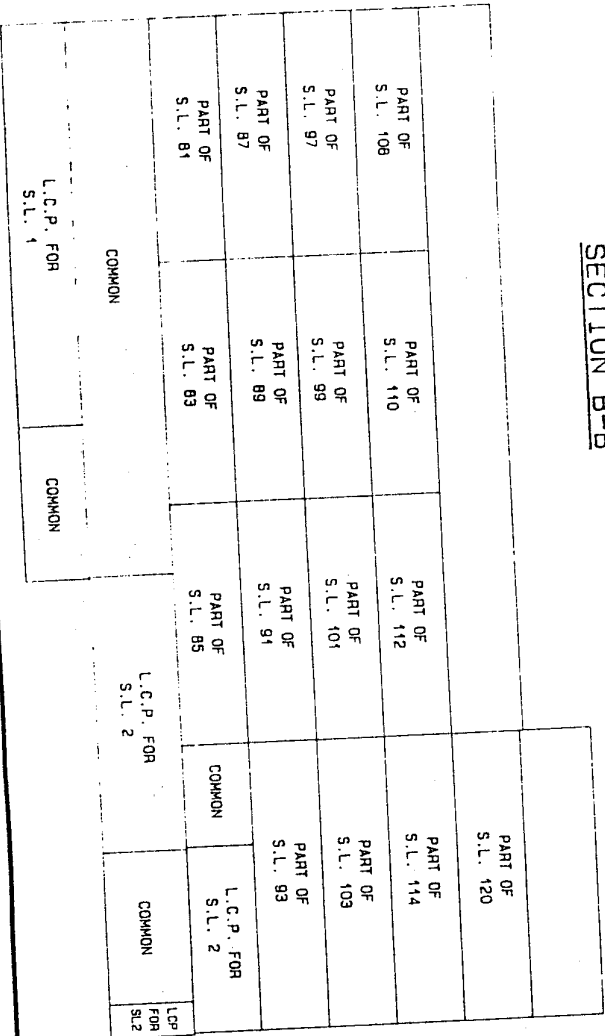
SECTIONS:



SECTION A-A



SECTION B-B



**SECTIONS:**

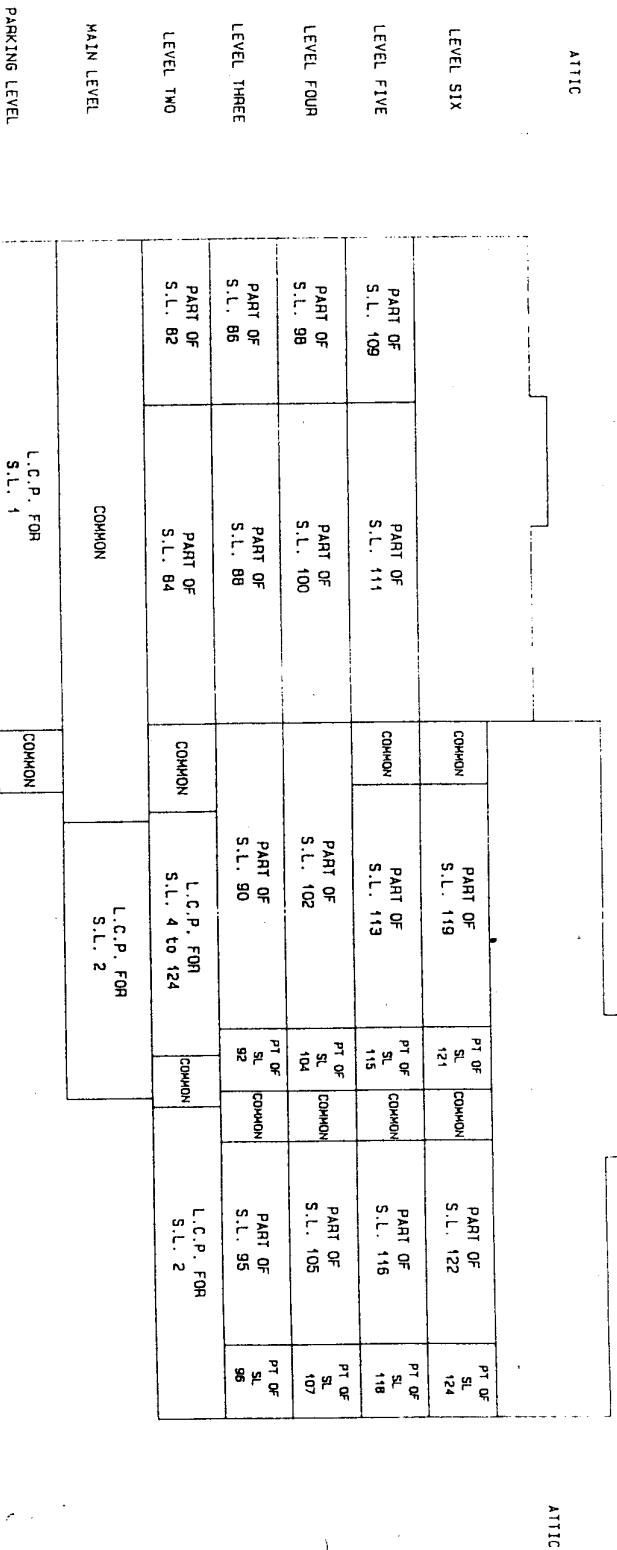
SCALE : 1 : 200  
 ALL DISTANCES SHOWN ARE IN METRES



**SECTION C-C**

STRATA PLAN  
 LMS

SHEET 12 OF 12 SHEETS



99232/09.

S-10172-12

FEBRUARY 22, 2000.