

08

**STRATA PLAN OF
LOT 26, D.L. 3903
PLAN 21816**

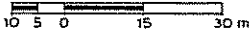
First Sheet - Sheet 1 of 20 Sheets

VR 2337

Resort Municipality of Whistler

Strata Plan VR 2337 deposited and registered in the Land Title Office at Vancouver B.C. this 11th day of January 1988

SCALE: - 1:750m.

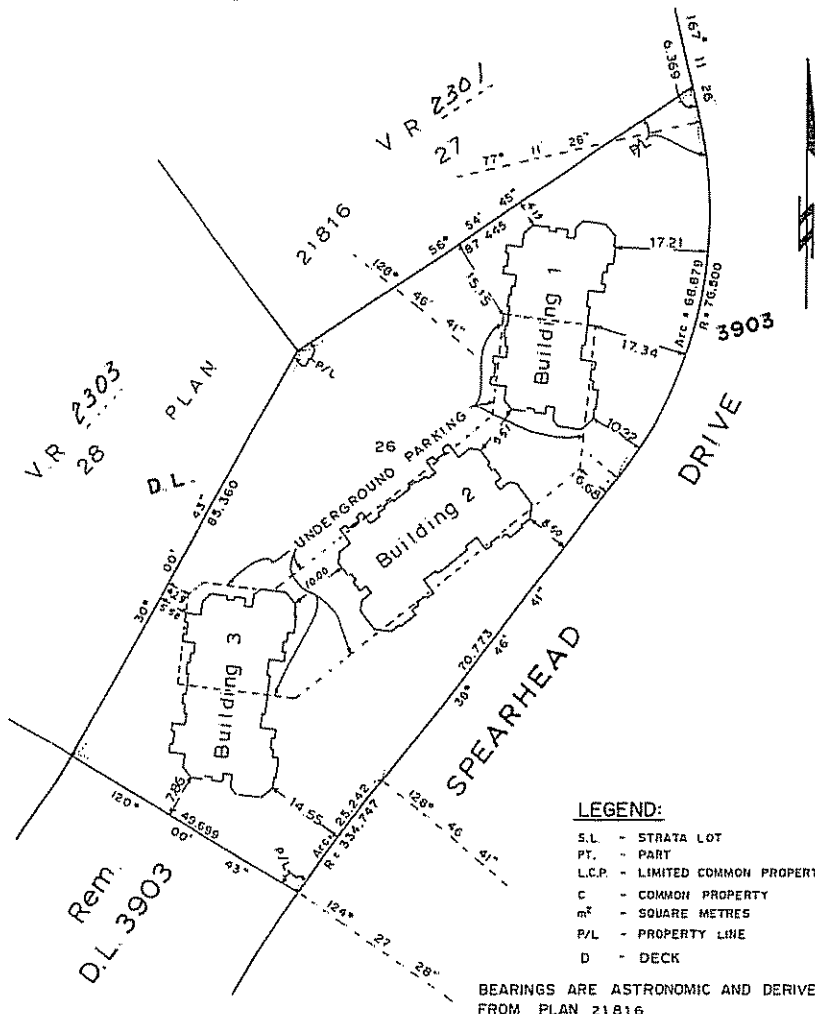


The Address for the Service of Documents on the 'Strata Corporation' is -
The Owners' Strata Plan No. VR 2337

c/o Owen Bird
3 Bentall Centre
2800-595 Burrard St.
Vancouver B.C. V7X 1J8

Civic Address is -
4857 Spearhead Drive.
Whistler B.C. V0N 1B0

[Signature]
Deputy Registrar
QC 3685



LEGEND:

- S.L. - STRATA LOT
- PT. - PART
- L.C.P. - LIMITED COMMON PROPERTY
- C - COMMON PROPERTY
- m² - SQUARE METRES
- P/L - PROPERTY LINE
- D - DECK

BEARINGS ARE ASTRONOMIC AND DERIVED FROM PLAN 21816

THIS PLAN LIES WITHIN THE
'SQUAMISH-LILLOOET' REGIONAL DISTRICT.

I, G.A. McDUGALL, of Whistler, B.C. British Columbia Land Surveyor, hereby certify that the buildings erected on the parcel described above is wholly within the external boundaries of that parcel. Dated at Vancouver on this 29th day of November 1988

[Signature]
B.C.L.S.

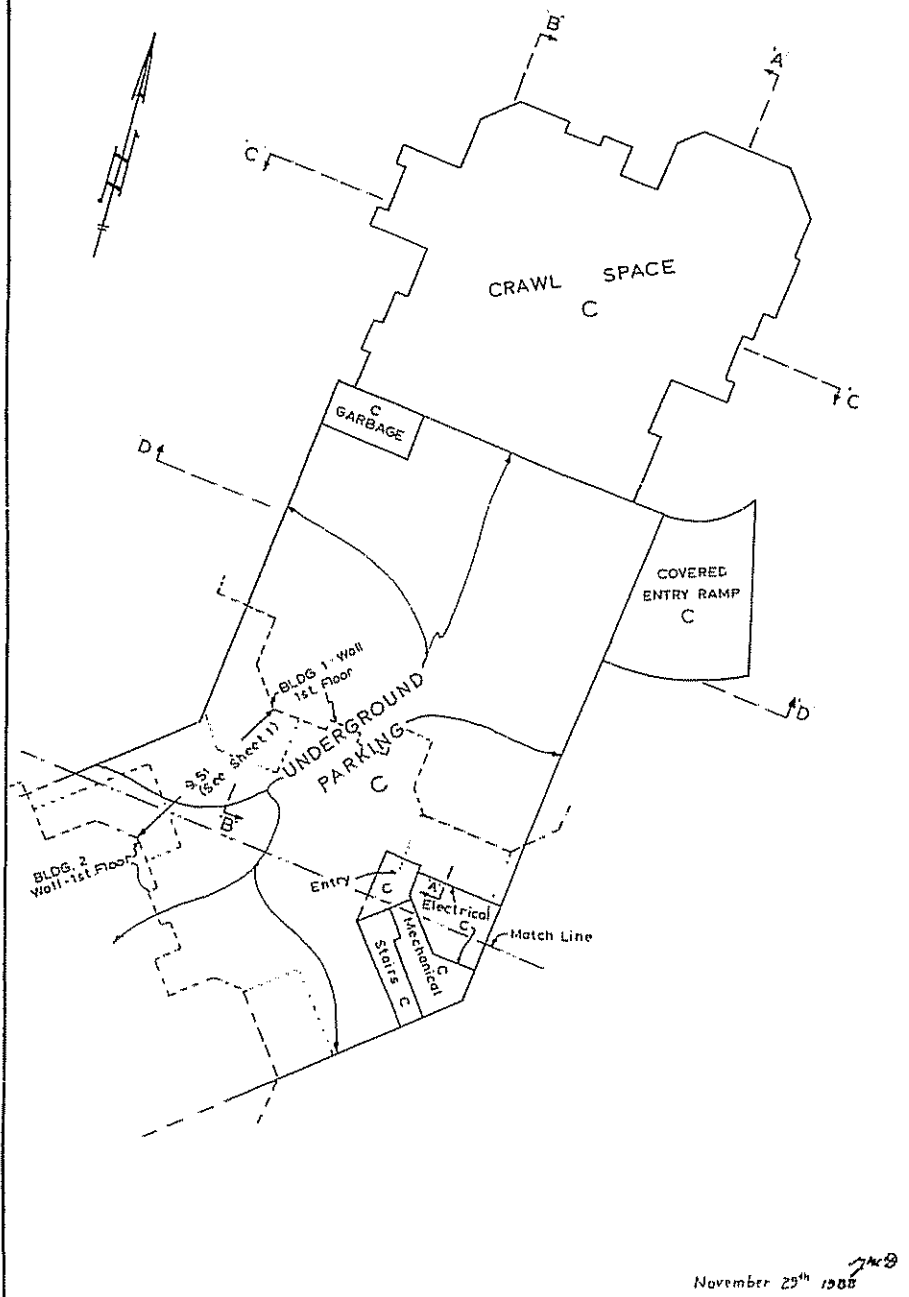
HERMON, BUNBURY & OKE
PROFESSIONAL LAND SURVEYORS
VANCOUVER & WHISTLER, B.C.

Sheet 4 of 20 Sheets.

STRATA PLAN
V.R. 2337

CRAWL SPACE AND
UNDERGROUND PARKING
BUILDING 1

SCALE - 1:200m



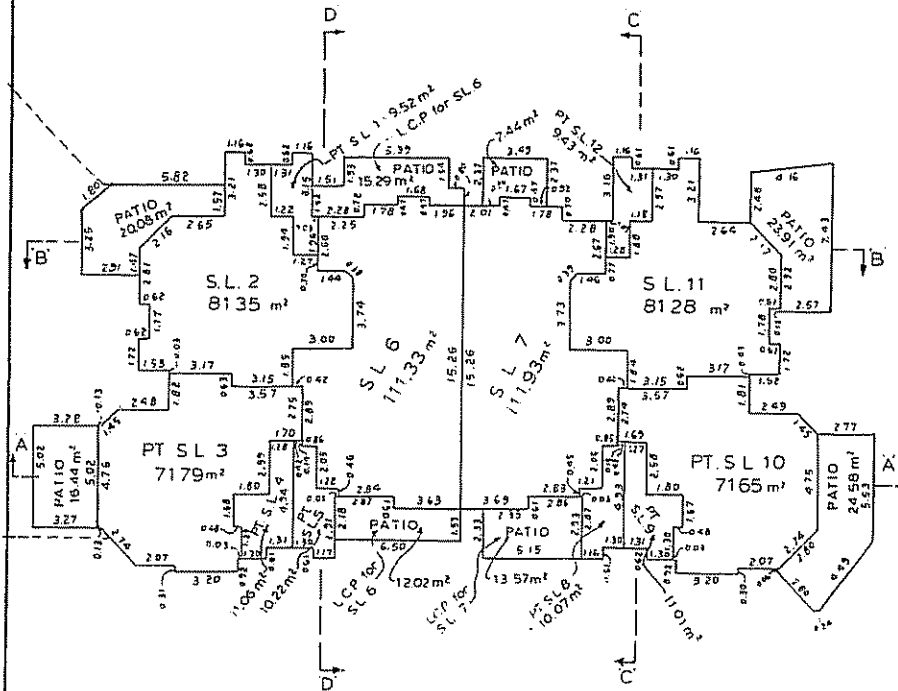
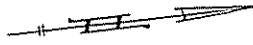
10-305-112

November 25th 1988

S-4798.0

STRATA PLAN
V.R. 2337

BUILDING 1
FIRST FLOOR
SCALE:- 1:200 m.



ALL PATIOS ARE L.C.P. FOR THE
USE OF THE ADJACENT STRATA LOT

TOTAL AREAS

- S L 1 = 128.18 m²
- 2 = 81.35 m²
- 3 = 91.11 m²
- 4 = 157.68 m²
- 5 = 129.38 m²
- 6 = 111.33 m²
- 7 = 111.93 m²
- 8 = 129.57 m²
- 9 = 158.19 m²
- 10 = 91.08 m²
- 11 = 81.28 m²
- 12 = 128.03 m²

November 25th 1988

S-4798 ©

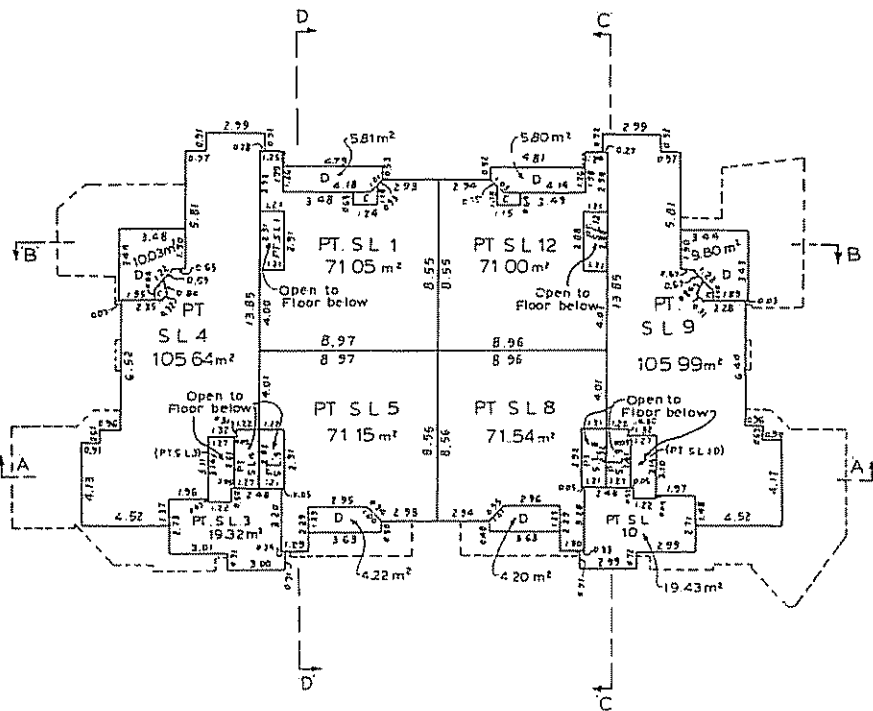
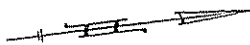
10 502-1117

STRATA PLAN
V.R. 2337

BUILDING 1

SECOND FLOOR

SCALE:- 1:200 m.



ALL DECKS ARE LCP FOR THE USE
OF THE ADJACENT STRATA LOT

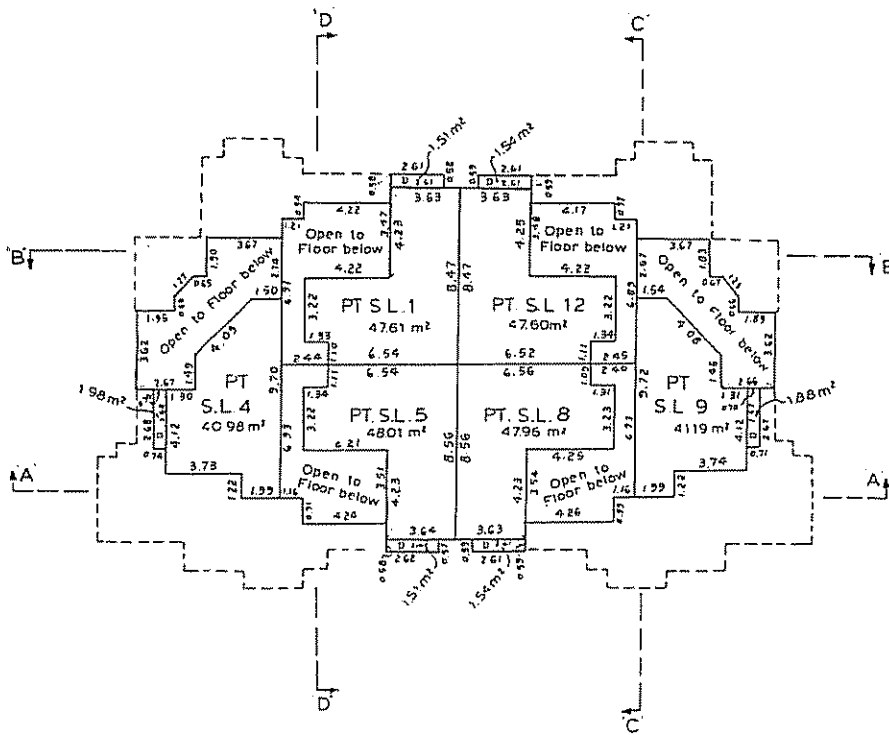
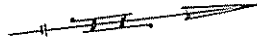
November 29th 1968 *7/11/68*

S-4798.©

10 355-112

STRATA PLAN
V.R. 2337

BUILDING 1
THIRD FLOOR
SCALE :- 1 : 200 m.



ALL DECKS ARE L.C.P FOR THE USE
OF THE ADJACENT STRATA LOT

November 29th 1988

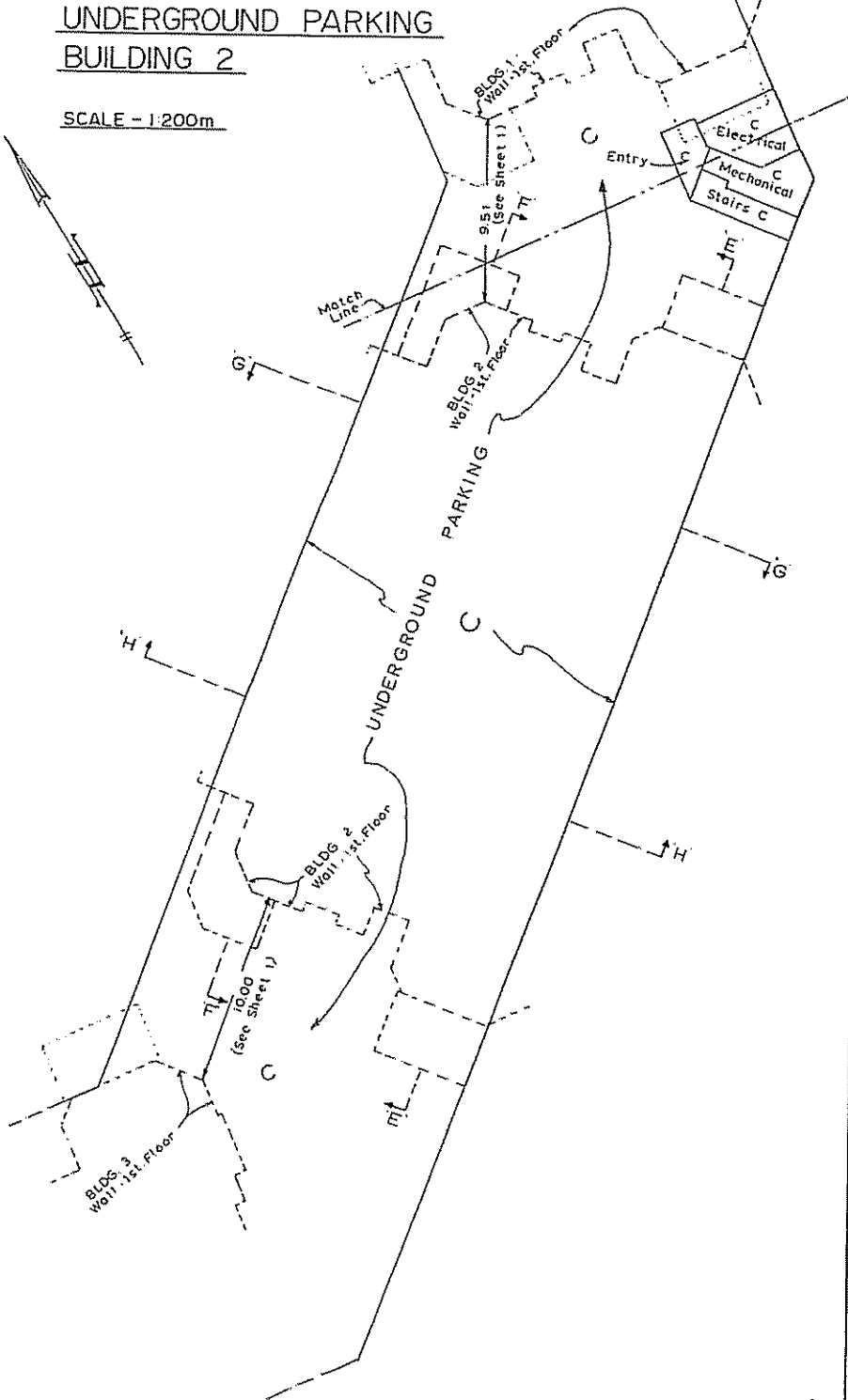
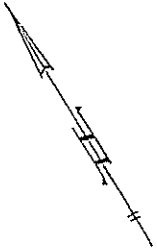
S-4798.©

10-558-1172

STRATA PLAN
V.R. 2337

UNDERGROUND PARKING
BUILDING 2

SCALE - 1:200m



0.35x1.7

November 29th 1988 *JMB*

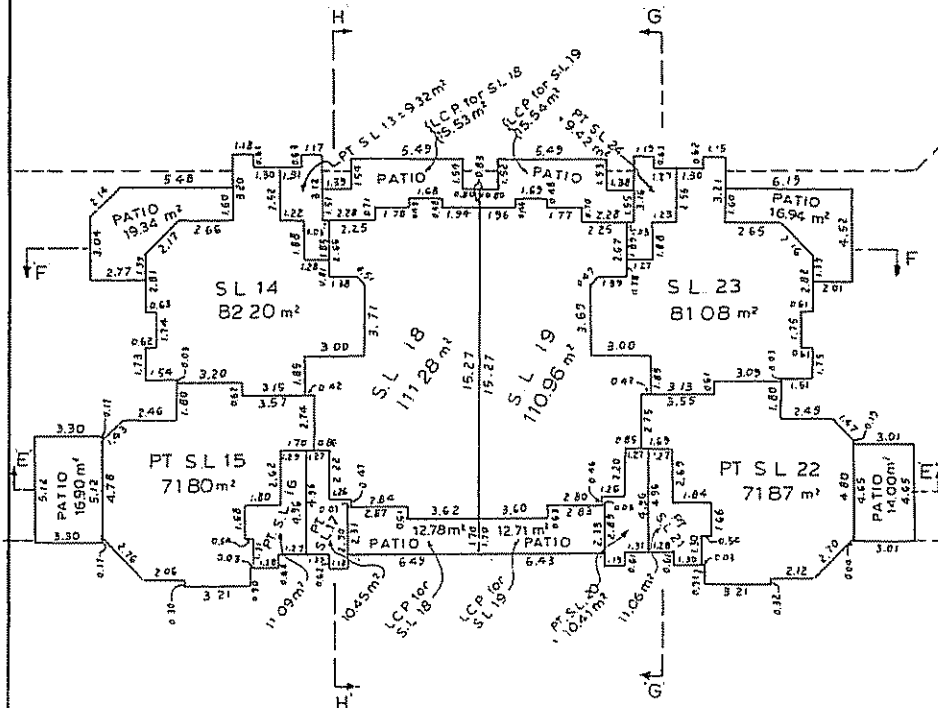
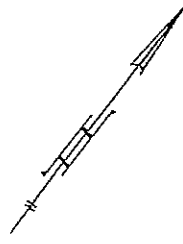
S-4798 ©

STRATA PLAN
V.R. 2337

BUILDING 2

FIRST FLOOR

SCALE: 1:200 m.



TOTAL AREAS

- SL 13 = 125.97 m²
- 14 = 82.20 m²
- 15 = 91.94 m²
- 16 = 156.99 m²
- 17 = 127.72 m²
- 18 = 111.28 m²
- 19 = 110.96 m²
- 20 = 127.45 m²
- 21 = 157.50 m²
- 22 = 92.37 m²
- 23 = 81.08 m²
- 24 = 126.02 m²

ALL PATIOS ARE LCP FOR THE USE OF THE ADJACENT STRATA LOT

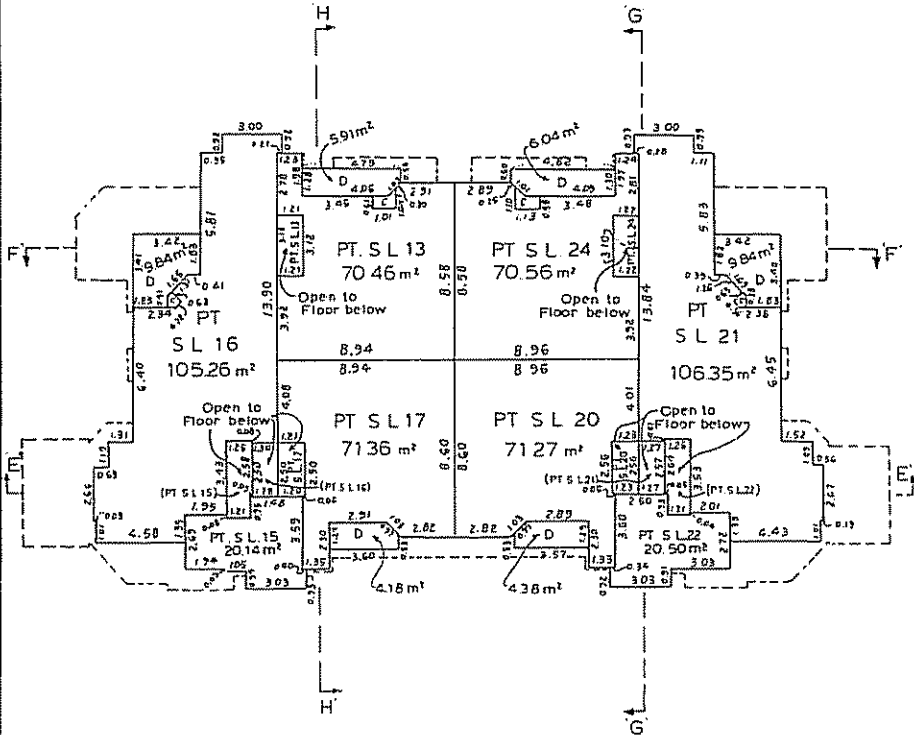
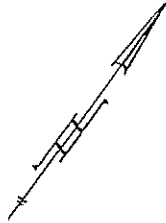
November 29th 1988

S-4798.©

00-508-1112

STRATA PLAN
V.R. 2337

BUILDING 2
SECOND FLOOR
SCALE: 1:200 m.



ALL DECKS ARE L.C.P. FOR THE USE
OF THE ADJACENT STRATA LOT

0 596.1172

November 25th, 1988 *[Signature]*

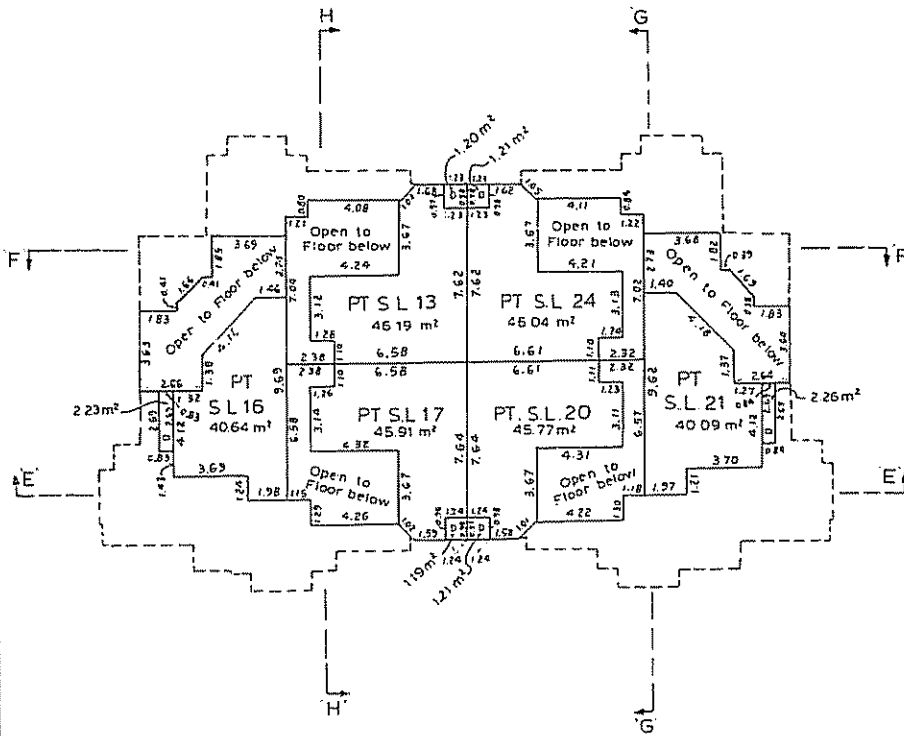
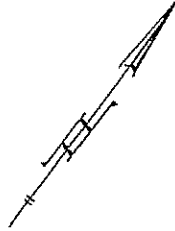
S-4798.®

STRATA PLAN
V.R. 2337

BUILDING 2

THIRD FLOOR

SCALE:- 1:200 m.



ALL DECKS ARE L.C.P FOR THE USE
OF THE ADJACENT STRATA LOT

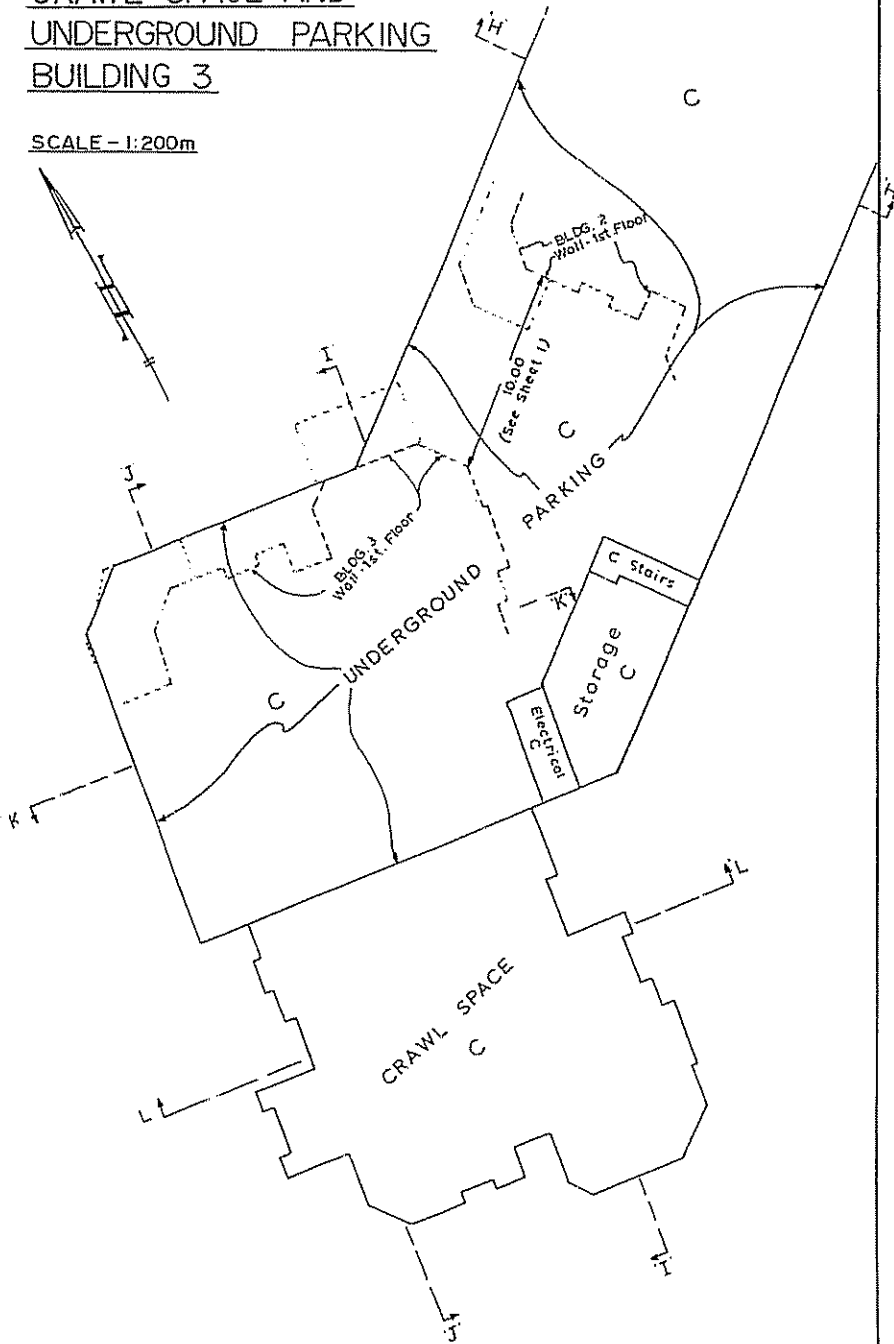
November 29th 1988

S-4798.©

STRATA PLAN
V.R. 2337

CRAWL SPACE AND
UNDERGROUND PARKING
BUILDING 3

SCALE - 1:200m



November 25th 1988

S-4798.®

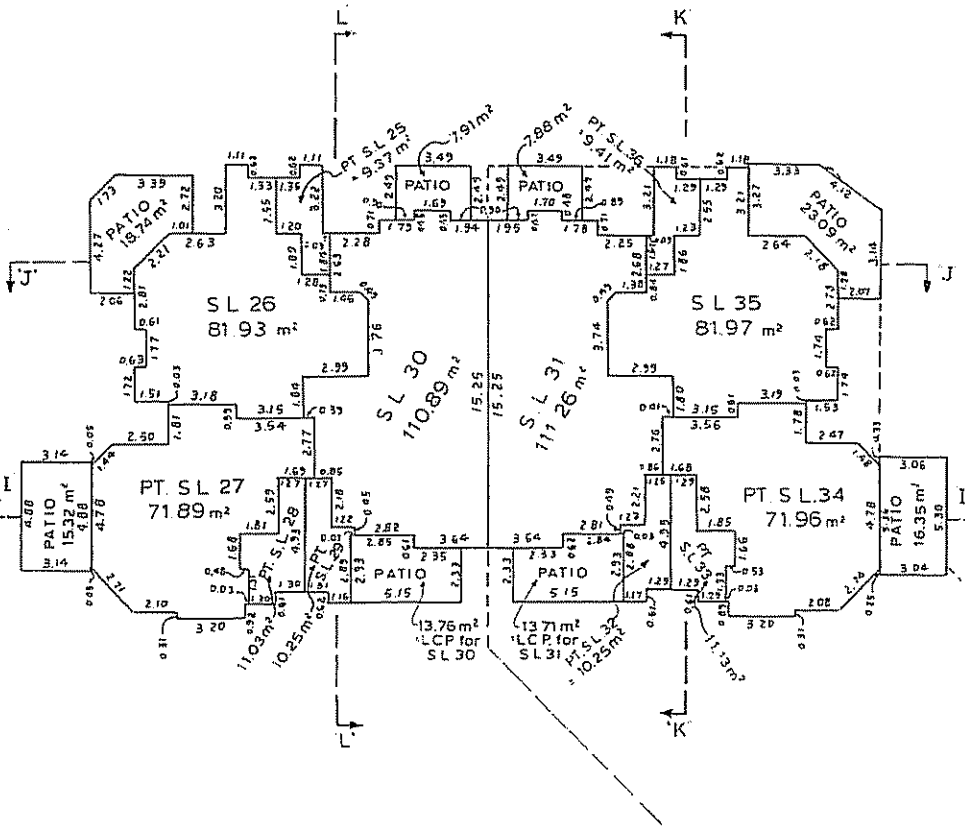
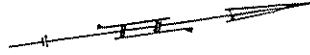
2111-52-112

STRATA PLAN
V.R. 2337

BUILDING 3

FIRST FLOOR

SCALE:- 1:200 m.



TOTAL AREAS

- S L 25 = 126 52 m²
- 26 = 81 93 m²
- 27 = 92 03 m²
- 28 = 158 04 m²
- 29 = 128 46 m²
- 30 = 110 89 m²
- 31 = 111 26 m²
- 32 = 127 82 m²
- 33 = 158 22 m²
- 34 = 92 38 m²
- 35 = 81 97 m²
- 36 = 126 59 m²

ALL PATIOS ARE L.C.P. FOR THE
USE OF THE ADJACENT STRATA LOT

November 29th 1988

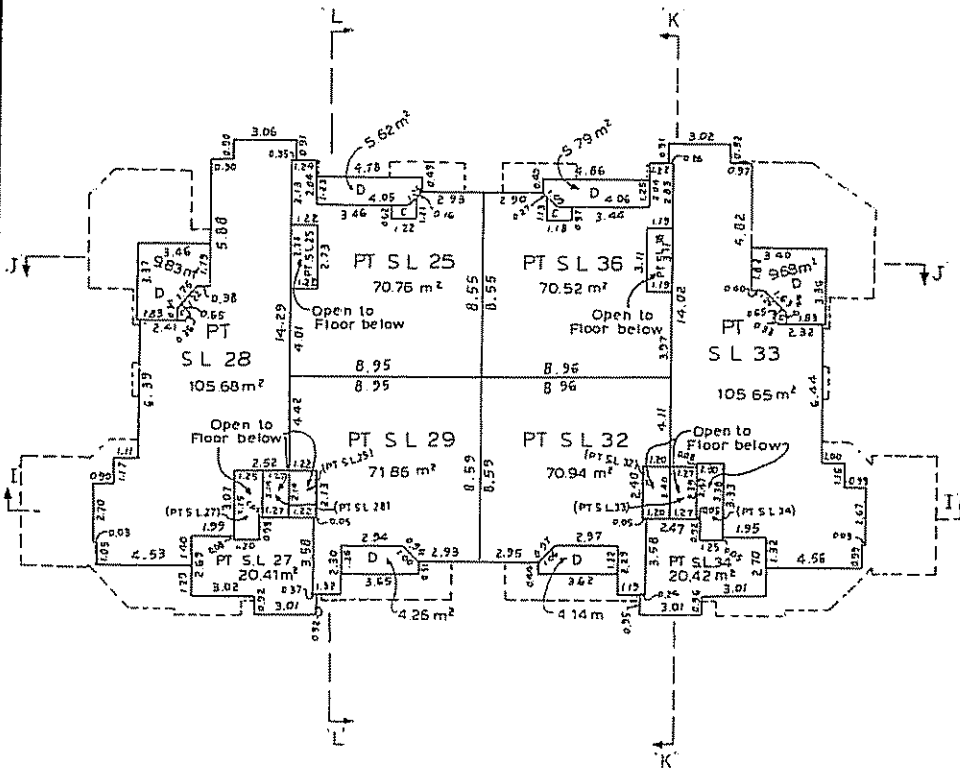
S-4798.®

STRATA PLAN
V.R. 2337

BUILDING 3

SECOND FLOOR

SCALE:- 1: 200 m.



ALL DECKS ARE L.C.P FOR THE USE
OF THE ADJACENT STRATA LOT

November 29th. 1988.

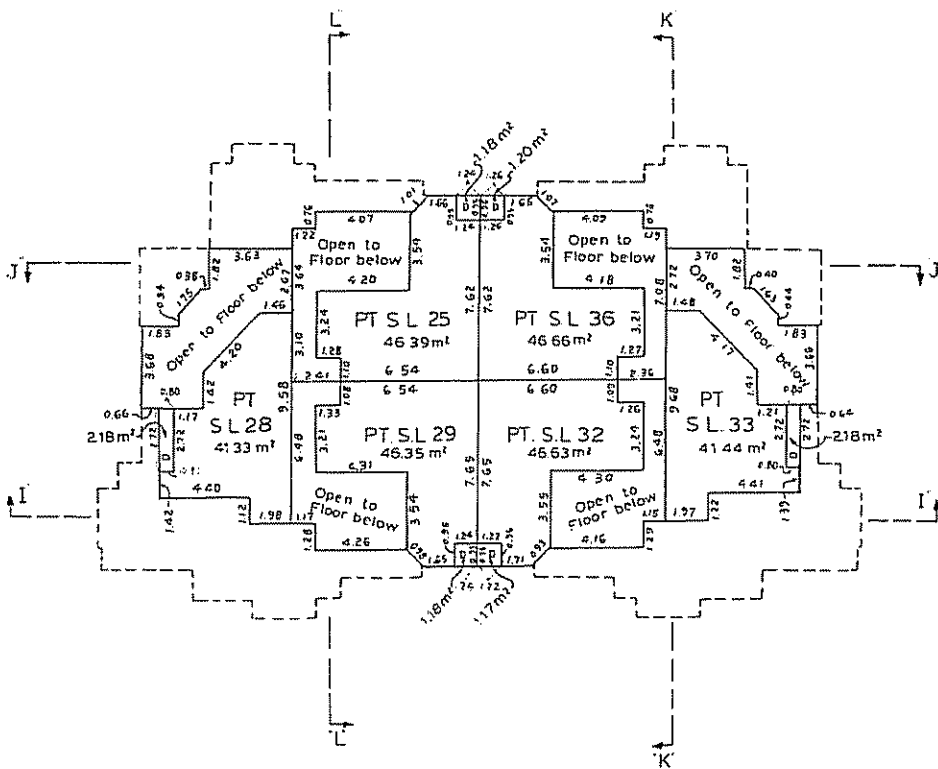
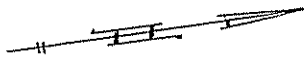
S-4798.®

STRATA PLAN
V.R. 2337

BUILDING 3

THIRD FLOOR

SCALE: 1:200 m.



ALL DECKS ARE L.C.P. FOR THE USE
OF THE ADJACENT STRATA LOT

November 21st 1988 *Jim D*

S-4798.©

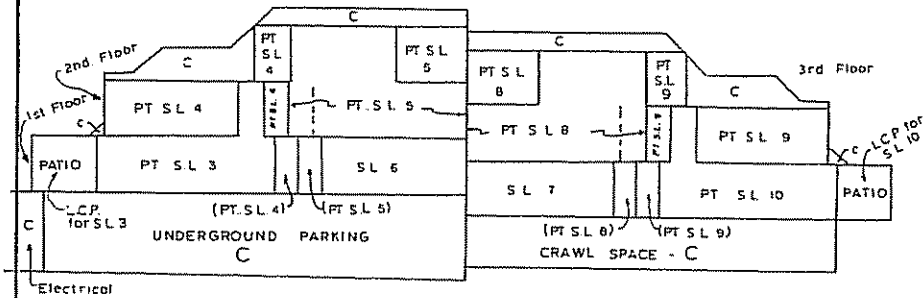
STRATA PLAN
V.R. 2337

SECTIONS

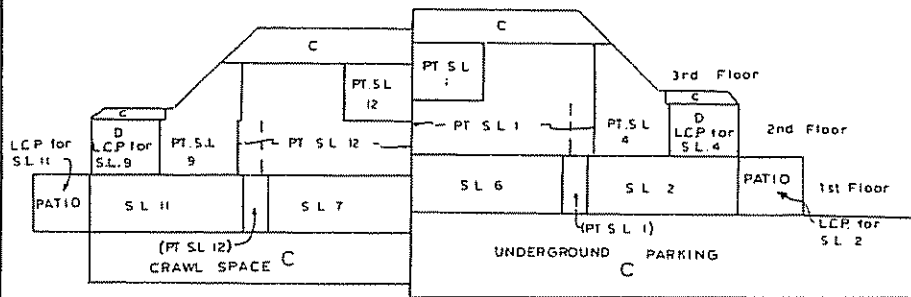
BUILDING 1:

SCALE:- 1:200 m.

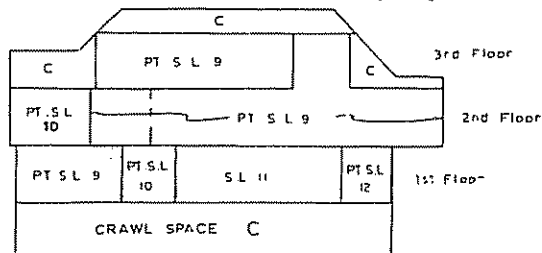
'A'-'A'



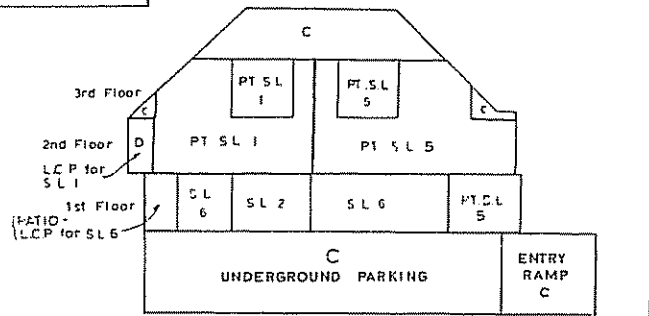
'B'-'B'



'C'-'C'



'D'-'D'



November 29th 1988

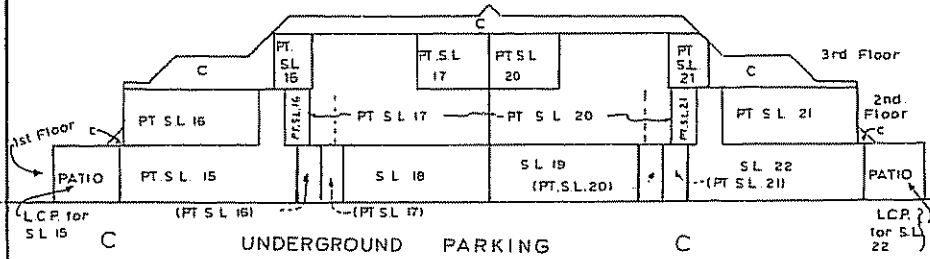
5-4798.®

SECTIONS

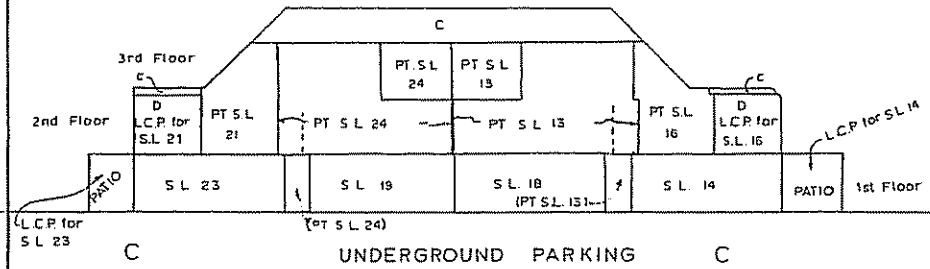
BUILDING 2:

SCALE: 1 : 200 m.

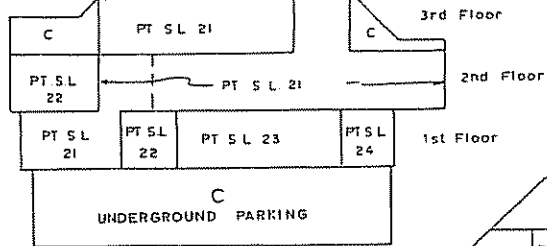
E - E'



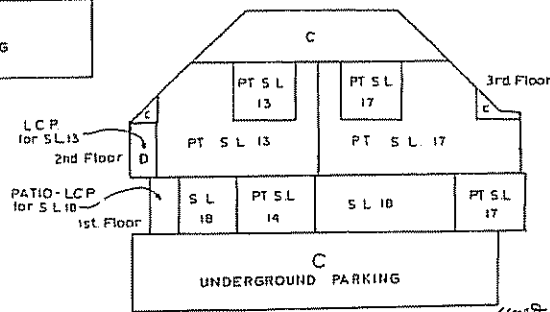
F - F'



G - G'



H - H'



November 29th, 1988

S-4798-©

0550-11/2

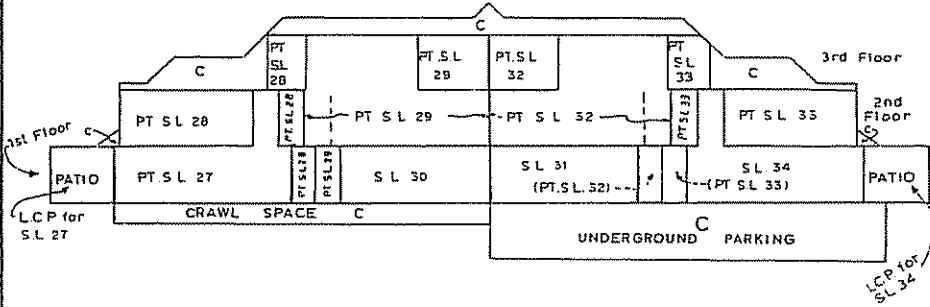
STRATA PLAN
V.R. 2337

SECTIONS

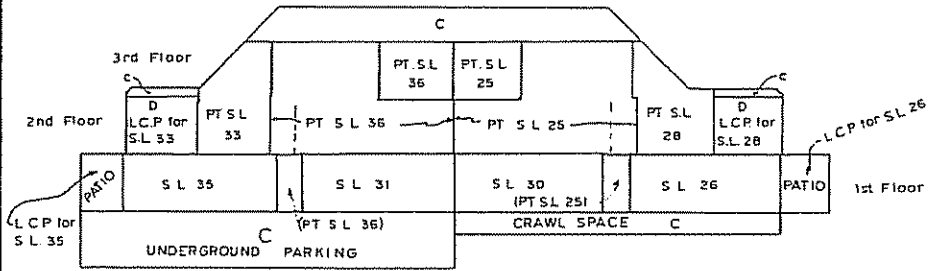
BUILDING 3:

SCALE:-1: 200 m.

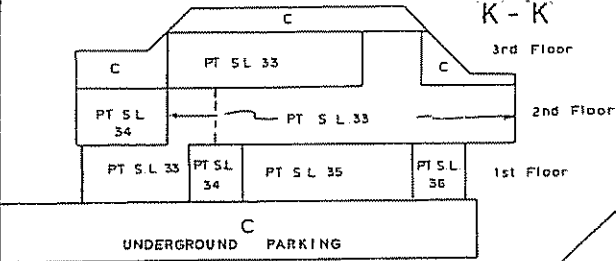
I - I'



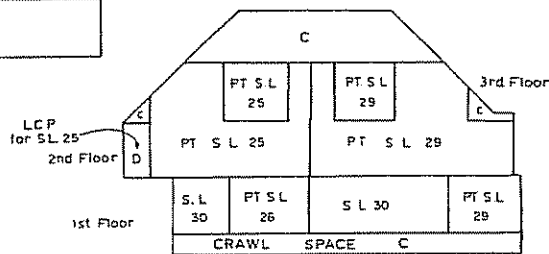
J - J'



K - K'



L - L'



November 29th, 1988

S-4798.0

