

THE ASPENS TRAILSIDE ON BLACKCOMB

SUITE #	S.L. #	SUITE TYPE	BED-RMS	SQ FT	SUITE #	S.L. #	SUITE TYPE	BED-RMS	SQ FT
101	1	A/HC	1	582	307	50	B1	2	807
102	2	A	1	590	309	51	D1	1	691
103	3	A	1	590	310	52	G	1	590
104	4	A	1	590	311	53	A	1	590
105	5	A	1	590	312	54	C	2	807
106	6	A	1	590	313	55	A	1	590
107	7	B1	2	807	314	56	A	1	590
109	8	D	1	548	318	60	A3	1	589
110	9	A	1	590	319	61	B2	2	807
111	10	A	1	590	320	62	B2	2	807
112	11	C	2	807	339	63	B2	2	807
113	12	A	1	590	340	64	H	1	705
115	14	A	1	590	366	65	F	2	962
119	18	B3	2	807	367	66	A	1	590
120	19	B2	2	807	368	67	B3	2	851
201	20	A/HC	1	582	401	68	A/HC	1	582
202	21	A	1	590	402	69	A	1	590
203	22	A	1	590	403	70	A	1	490
205	24	A	1	590	404	71	A	1	590
206	25	A	1	590	405	72	A	1	590
207	26	B1	2	807	406	73	A	1	590
208	27	A1	1	577	407	74	B1	2	807
209	28	D	1	590	411	75	B4	2	1075
210	29	A	1	590	412	76	C	2	807
211	30	A	1	590	413	77	A	1	590
212	31	C	2	807	414	78	A	1	590
215	34	A	1	590	415	79	A	1	590
219	38	B2	2	807	416	80	A	1	590
220	39	B2	2	807	417	81	A	1	590
266	41	F	2	962	418	82	A3	1	589
268	43	B3	2	851	419	83	B2	2	807
301	44	A/HC	1	582	420	84	B2	2	807
302	45	A	1	590	439	85	B2	2	807
303	46	A	1	590	440	86	H	1	705
304	47	A	1	590	466	87	F	2	962
305	48	A	1	590	467	88	A	1	590
306	49	A	1	590	468	89	B3	2	851

THE ASPENS, PHASE II TRAILSIDE ON BLACKCOMB

SUITE #	S.L. #	SUITE TYPE	BED/ BATH	AREA SQ FT
---------	--------	------------	-----------	------------

SUITE #	S.L. #	SUITE TYPE	BED/ BATH	AREA SQ FT
---------	--------	------------	-----------	------------

First Floor

121	90	A	1	590
122	91	A	1	590
123	92	A	1	590
125	93	B5	2	932
126	94	B5	2	807
127	95	C	2	807
128	96	A	1	590
129	97	A	1	590
130	98	D	1	590
131	99	A1	1	577
132	100	B1	2	807
133	101	A	1	590
134	102	A	1	590
135	103	A	1	590
136	104	A	1	590
137	105	A	1	590
138	106	A	1	590

Third Floor

321	124	A	1	590
322	125	A	1	590
323	126	A	1	590
325	127	B5	2	932
326	128	B2	2	807
327	129	C	2	807
328	130	A	1	590
329	131	G	1	590
330	132	D1	1	691
332	133	B1	2	807
333	134	A	1	590
334	135	A	1	590
335	136	A	1	590
336	137	A	1	590
337	138	A	1	590
338	139	A	1	590

Second Floor

221	107	A	1	590
222	108	A	1	590
223	109	A	1	590
225	110	B5	2	932
226	111	B2	2	807
227	112	C	2	807
228	113	A	1	590
229	114	A	1	590
230	115	D	1	590
231	116	A1	1	577
232	117	B1	2	807
233	118	A	1	590
234	119	A	1	590
235	120	A	1	590
236	121	A	1	590
237	122	A	1	590
238	123	A	1	590

Fourth Floor

421	140	A	1	590
422	141	A	1	590
423	142	A	1	590
425	143	B5	2	932
426	144	B2	2	807
427	145	C	2	807
428	146	B4	2	1075
432	147	B1	2	807
433	148	A	1	590
434	149	A	1	590
435	150	A	1	590
436	151	A	1	590
437	152	A	1	590
438	153	A	1	590

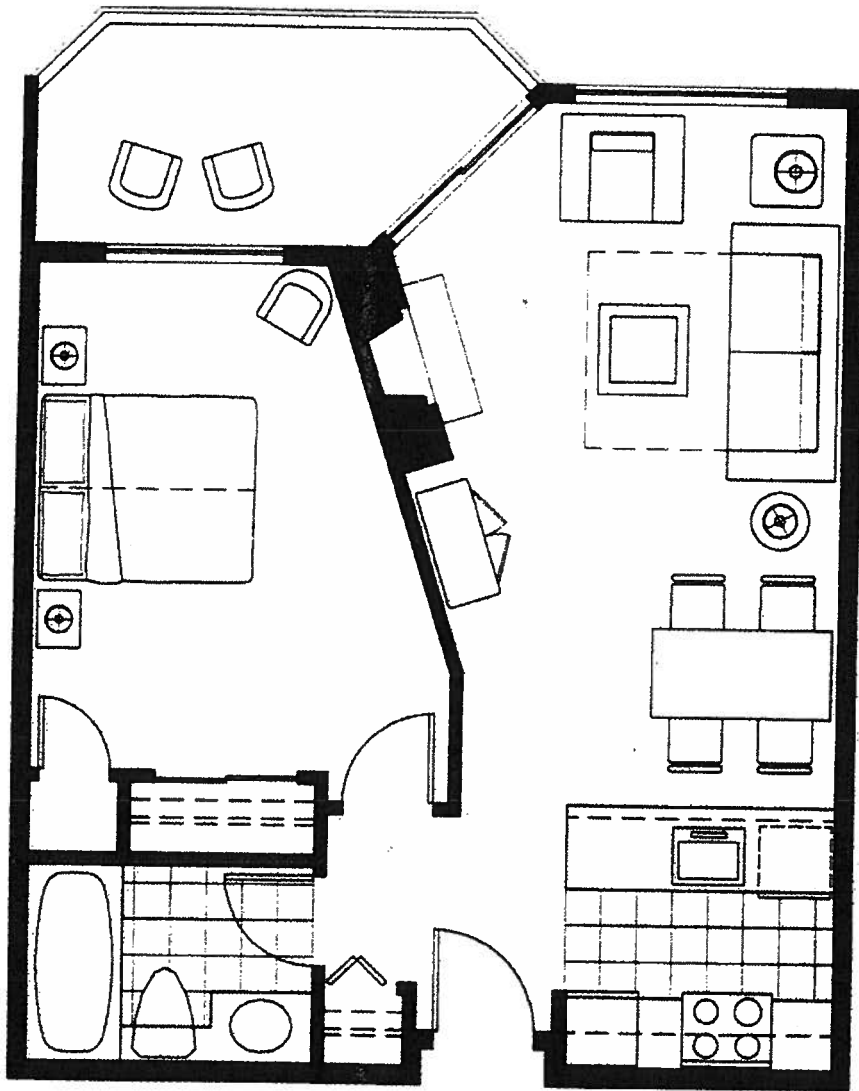
06-May-94

THE ASPENS, PHASE III

Suite #	SL	Type	Bed/Bath	S	sq ft
FIRST FLOOR					
142	154	A	1		590
164	155	B-2B	2		807
SECOND FLOOR					
242	156	B-2B	2		807
243	157	A-2	1		589
244	158	E	2		807
245	159	A-HC	1		582
247	160	B-2B	2		807
248	161	B-6	2		881
249	162	B-6	2		881
251	163	B-2B	2		807
252	164	C-1	2		888
253	165	A	1		590
254	166	A	1		590
255	167	D	1		590
256	168	A-1	1		577
257	169	B-1	2		807
258	170	B-2A	2		807
260	171	B-5	2		939
261	172	A	1		590
262	173	A	1		590
263	174	B-2B	2		807
264	175	B-2B	2		807
THIRD FLOOR					
342	177	B-2B	2		807
343	178	A-2	1		589
344	179	E	2		807
345	180	A-HC	1		582
347	181	B-2B	2		807
348	182	B-6	2		881
349	183	B-6	2		881
351	184	B-2B	2		807
352	185	C-1	2		888
353	186	A	1		590
354	187	A	1		590
355	188	D	1		590
356	189	A-1	1		577
357	190	B-1	2		807
358	191	B-2A	2		807
360	192	B-5	2		939
361	193	A	1		590
362	194	A	1		590
363	195	B-2B	2		807

Suite #	SL	Type	Bed/Bath	S	sq ft
FOURTH FLOOR					
441	198	A	1		590
442	199	B-2B	2		807
443	200	A-2	1		589
444	201	E	2		807
445	202	A	1		590
447	203	B-2B	2		807
448	204	B-6	2		881
449	205	B-6	2		881
451	206	B-2B	2		807
452	207	C-1	2		888
453	208	A	1		590
454	209	G	1		590
455	210	D-2	1		736
458	212	B-2A	2		807
460	213	B-5	2		939
461	214	A	1		590
462	215	A	1		590
463	216	B-2B	2		807
464	217	B-2B	2		807
465	218	A	1		590
FIFTH FLOOR					
543	219	A-2	1		589
544	220	E	2		807
545	221	A	1		590
547	222	B-2B	2		807
548	223	B-6	2		881
549	224	B-6	2		881
551	225	B-2B	2		807
552	226	C-1	2		888
553	227	B-4	2		1075
558	229	B-2A	2		807
560	230	B-5	2		939
561	231	A	1		590
562	232	A	1		590
563	233	B-2B	2		807

08/30/94

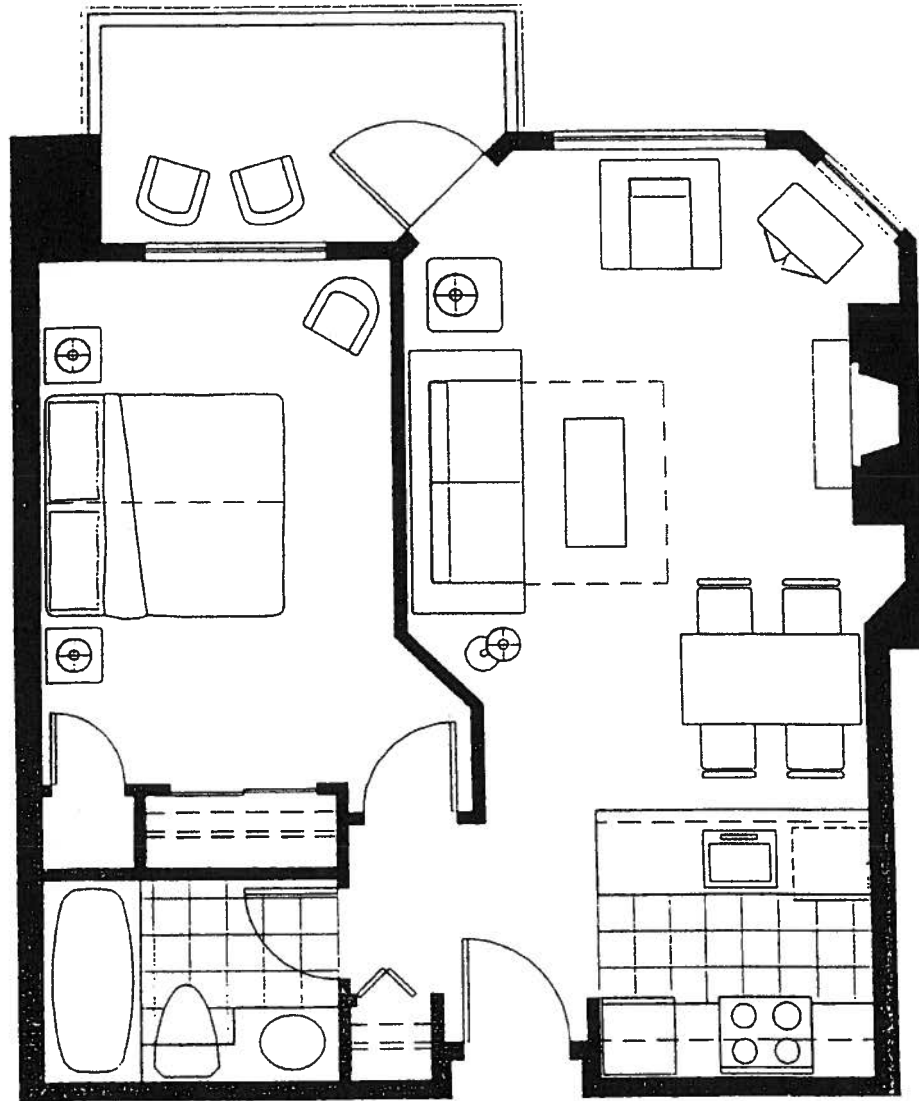


Aspens - Trailside on Blackcomb

Suite A

improve our product we reserve the right to make modifications to design and features without further notice. All square footages shown are approximate.

590 SqFt

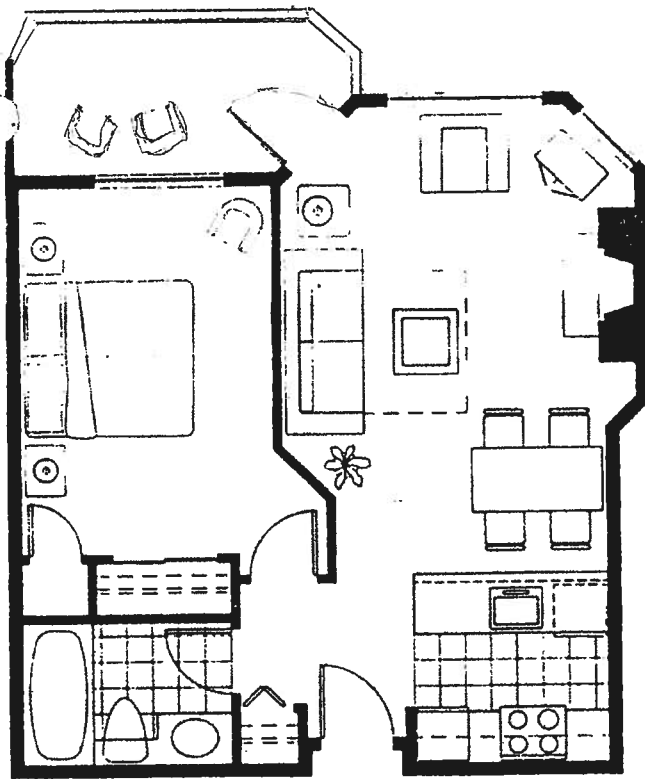


The Aspens - Trailside on Blackcomb

Suite A2

In an effort to improve our product we reserve the right to make modifications to designs and features without further notice. All square footages shown are approximate.

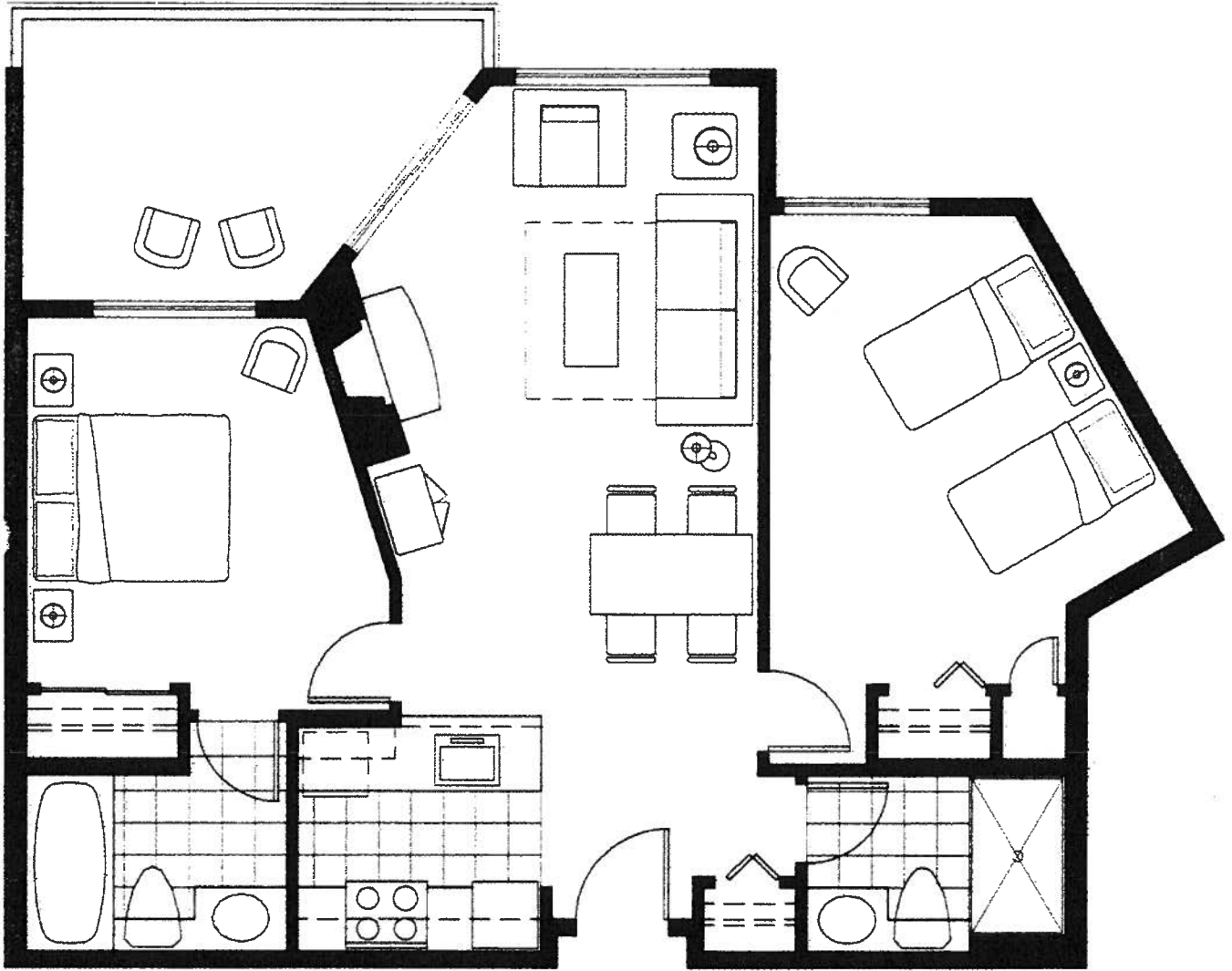
589 Sq Ft



SUITE A3 ★ 589 SQ.FT.

one bedroom

The
ASPENS
Trailside on Blackcomb
FINAL PHASE

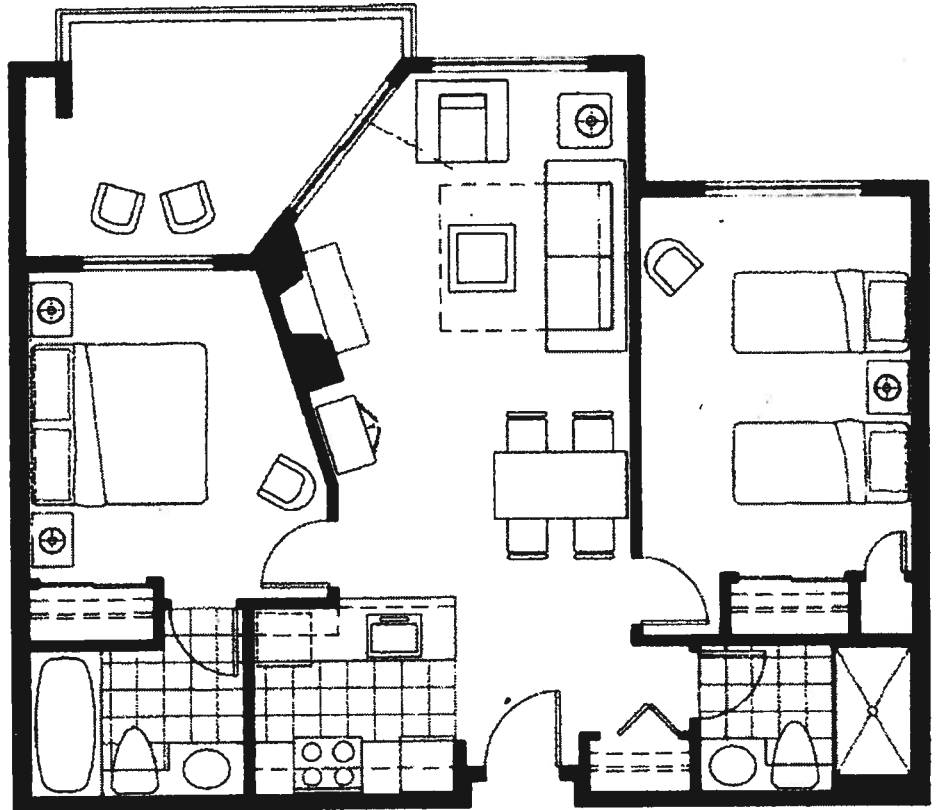


The Aspens - Trailside on Blackcomb

Suite B1

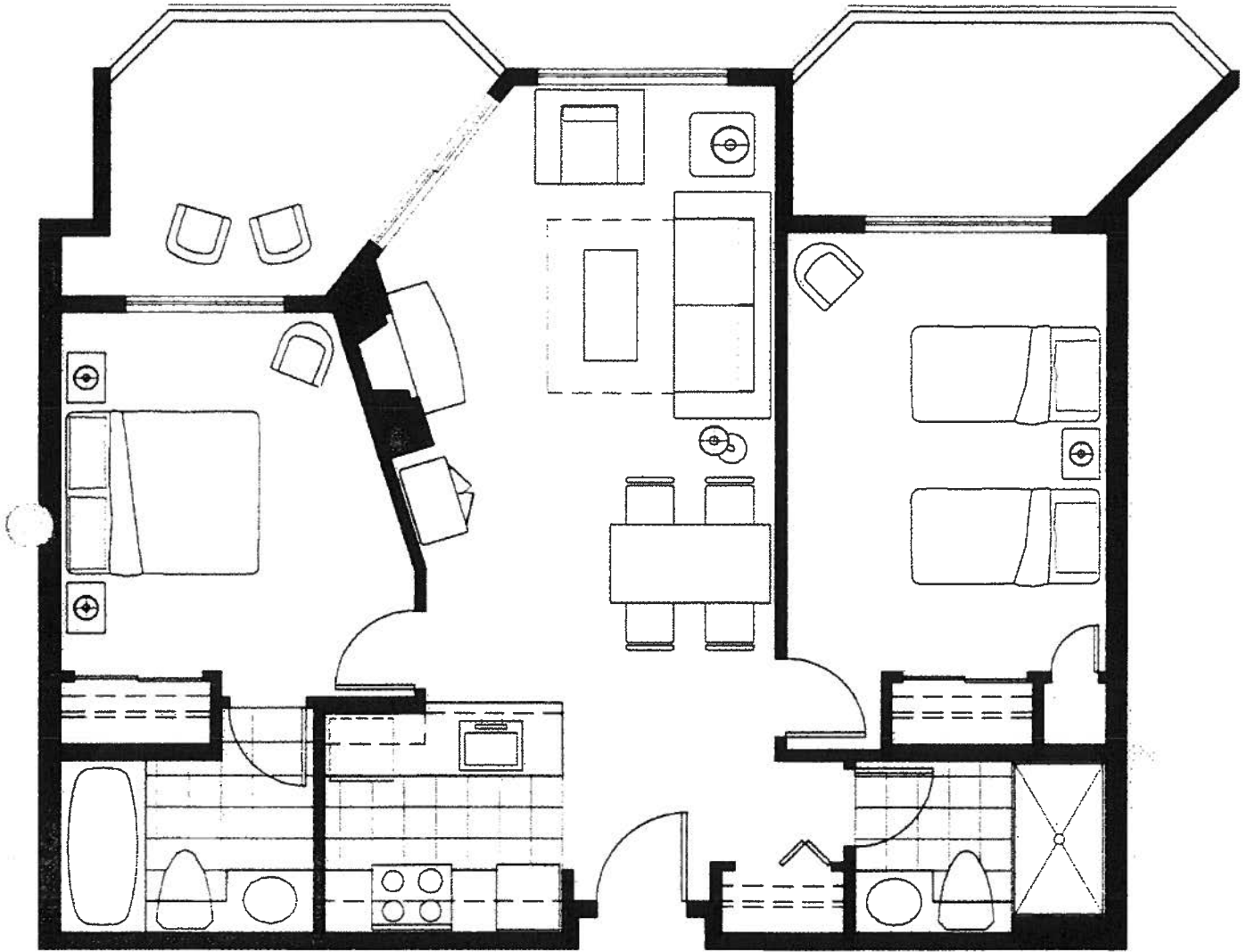
In an effort to improve our product we reserve the right to make modifications to designs and features without further notice. All square footages shown are approximate.

807 Sqft



Aspens

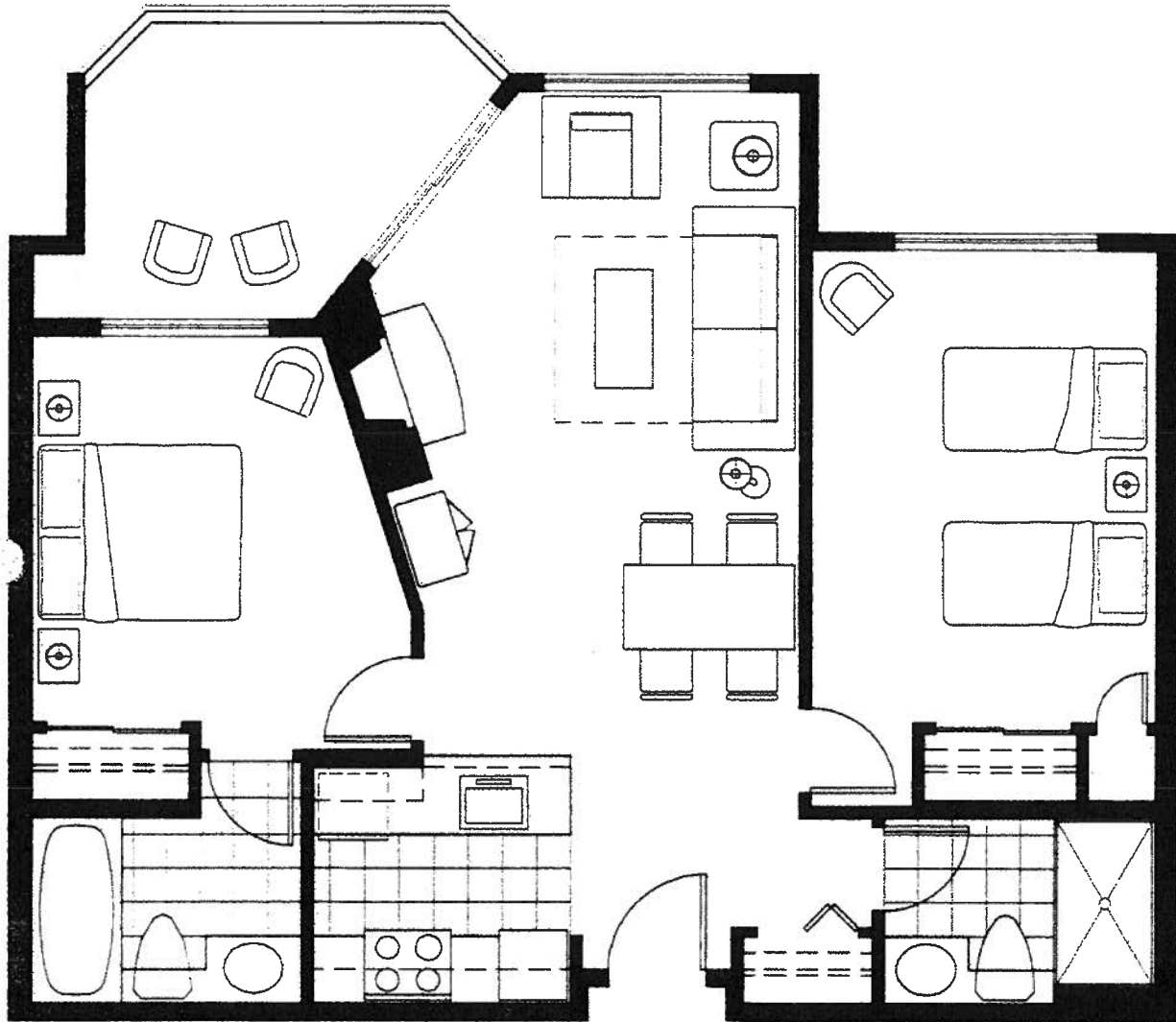
SUITE B2 ★ 807 SQ.FT.



The Aspens - Trailside on Blackcomb Suite B2A

In an effort to improve our product we reserve the right to make modifications to designs and features without further notice. All square footages shown are approximate.

807 SqFt

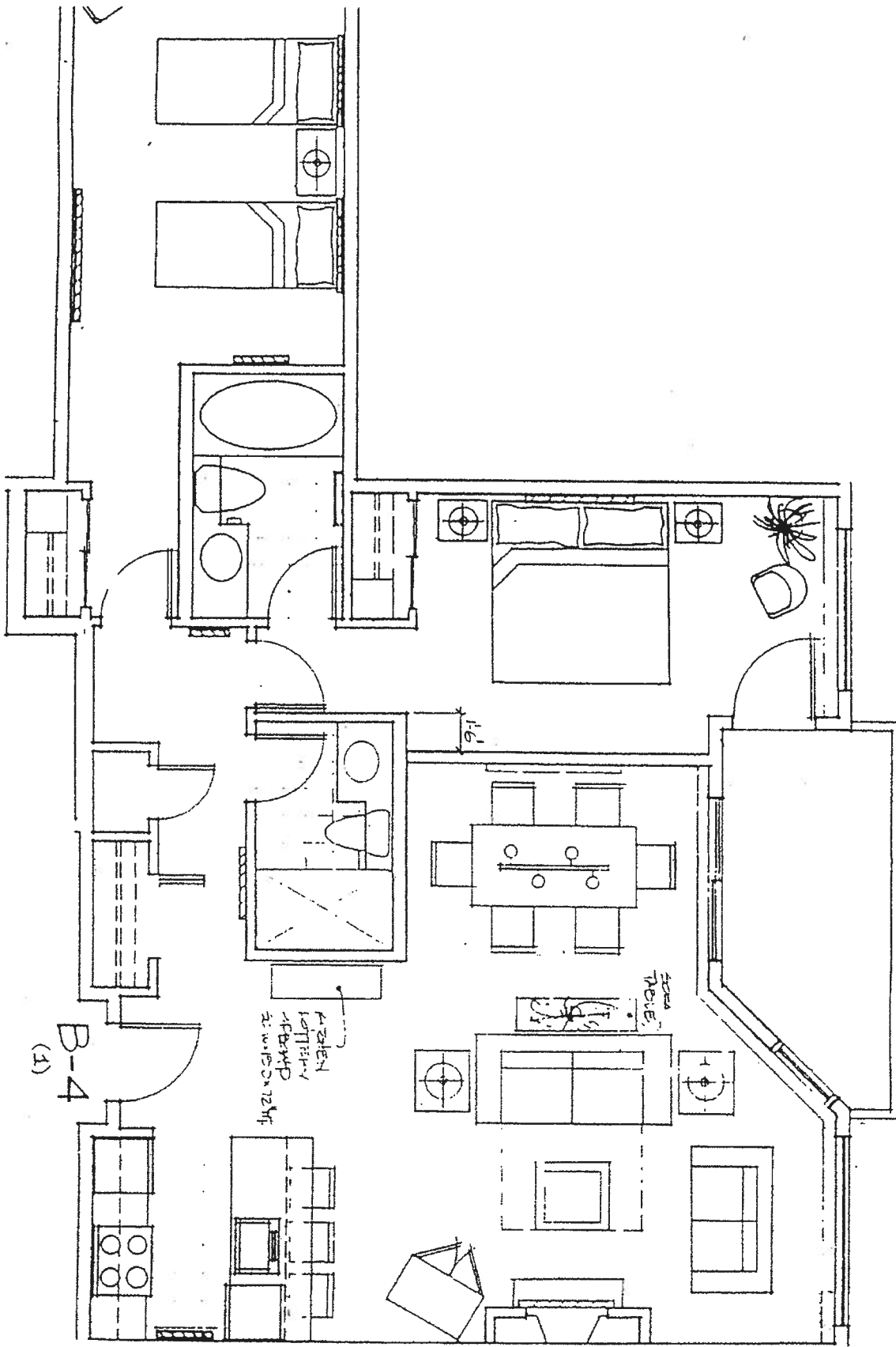


The Aspens - Trailside on Blackcomb

Suite B2B

In an effort to improve our product we reserve the right to make modifications to designs and features without further notice. All square footages shown are approximate.

807 Sqft

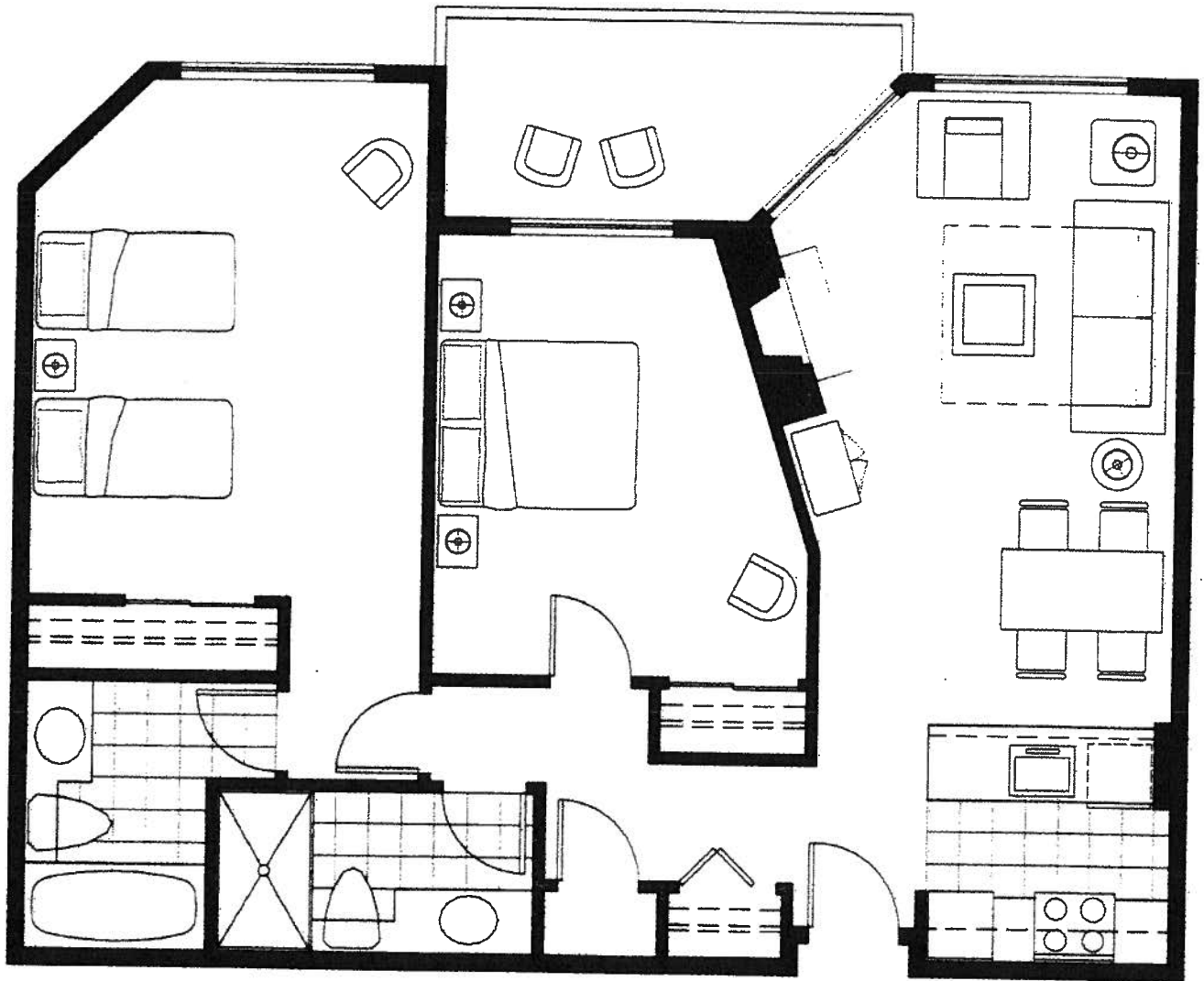


IE ASPENS

Suite B4 1075 Sq. Ft.

In an effort to improve our product we reserve the right to make modifications to designs and features without further notice. All square footages shown are approximate.



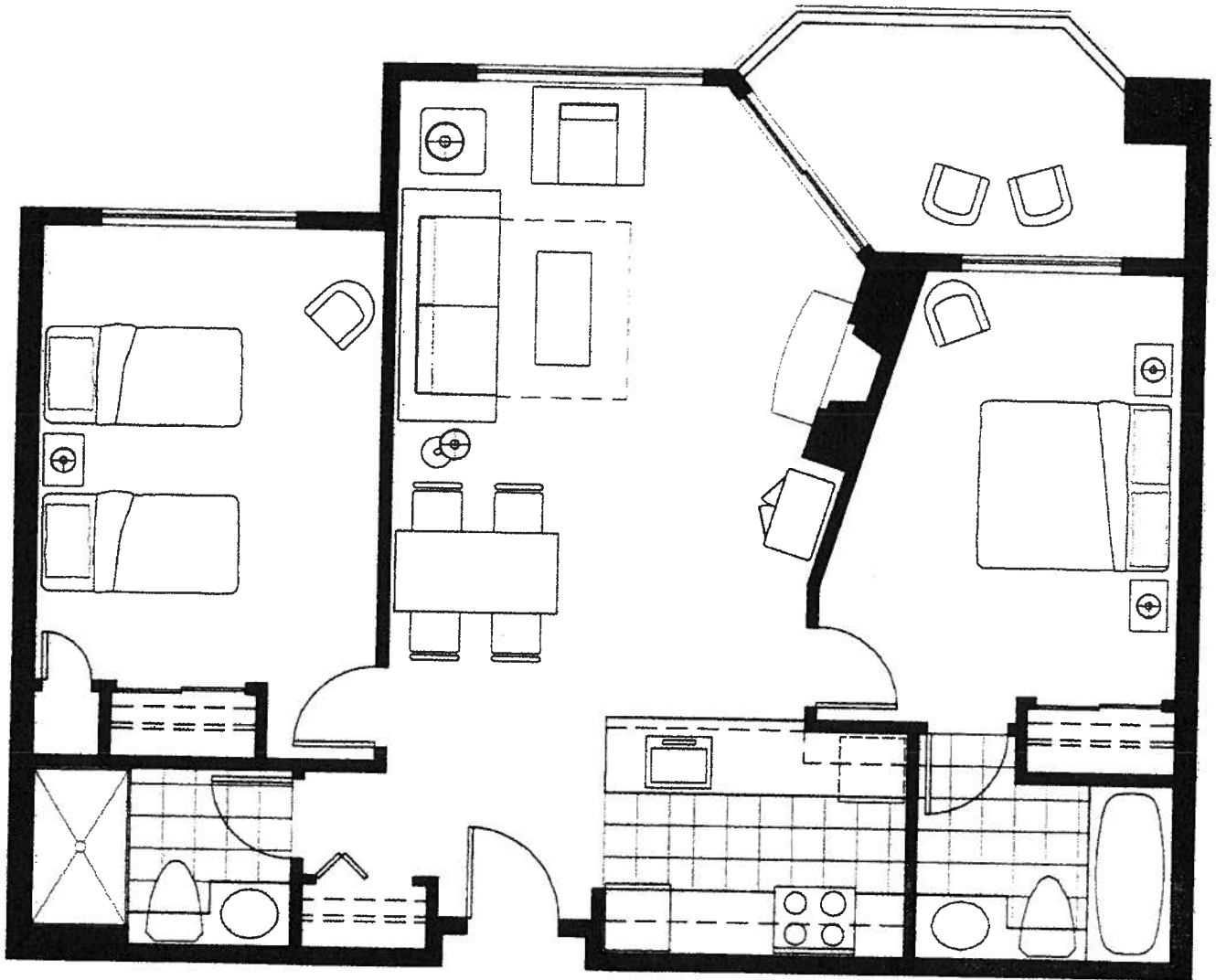


The Aspens - Trailside on Blackcomb

Suite B5

In an effort to improve our product we reserve the right to make modifications to design and features without further notice. All square footages shown are approximate.

939 SqFt

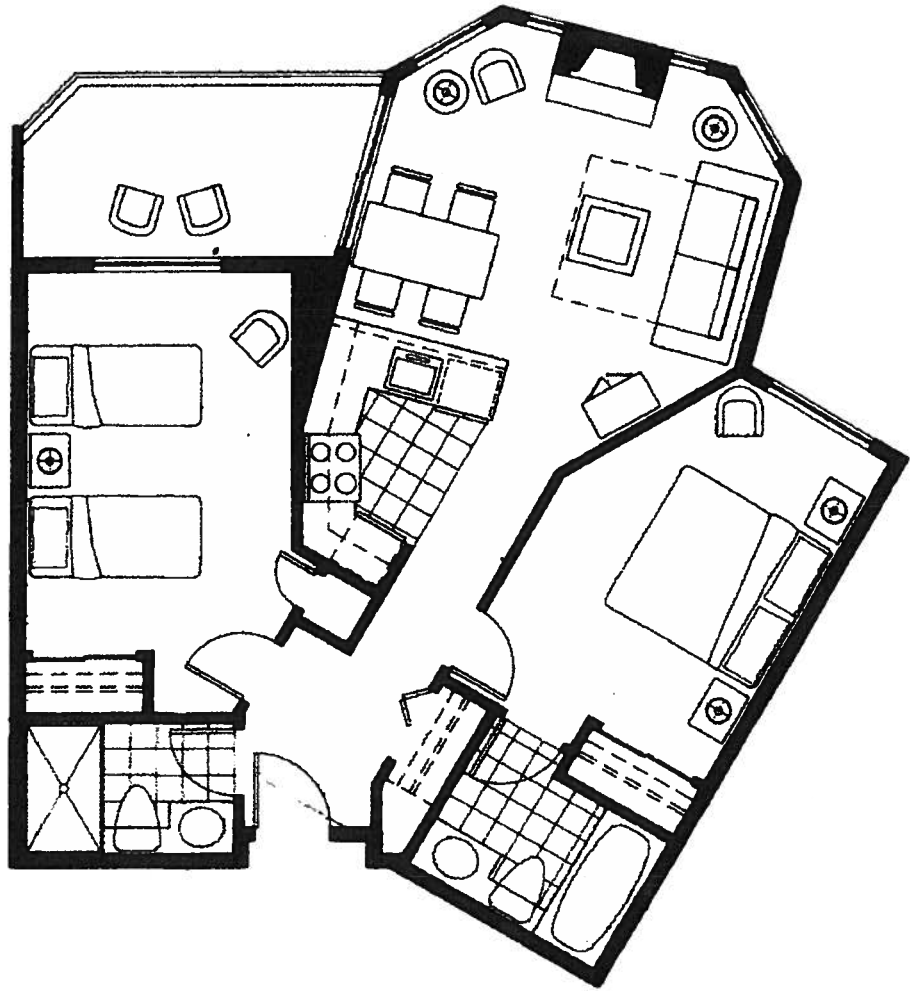


The Aspens - Trailside on Blackcomb

Suite B6

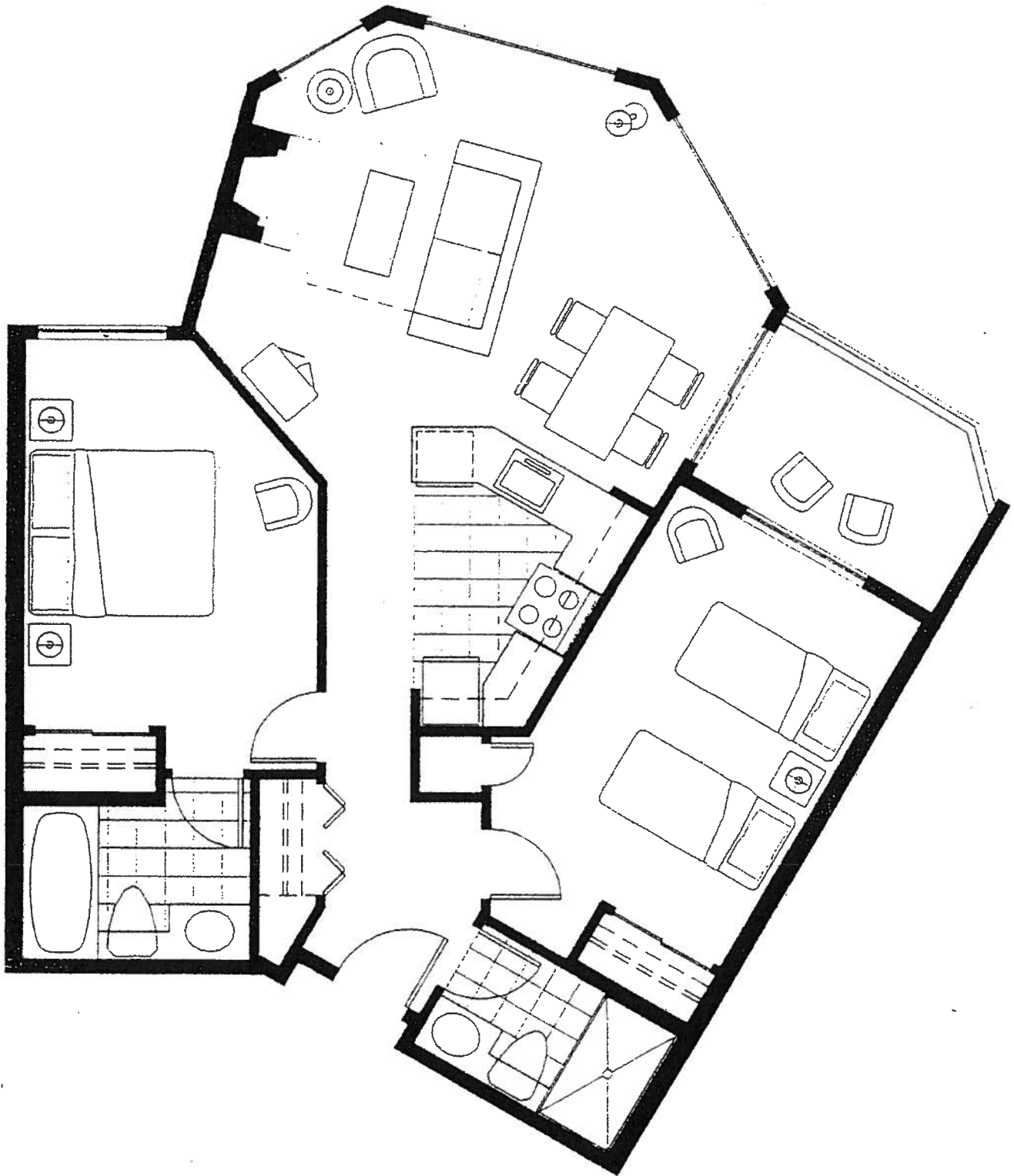
If an effort to improve our product, we reserve the right to make modifications to design and features without further notice. All square footages shown are approximate.

881 Sqft



Aspens

SUITE C ★ 888 SQ.FT.

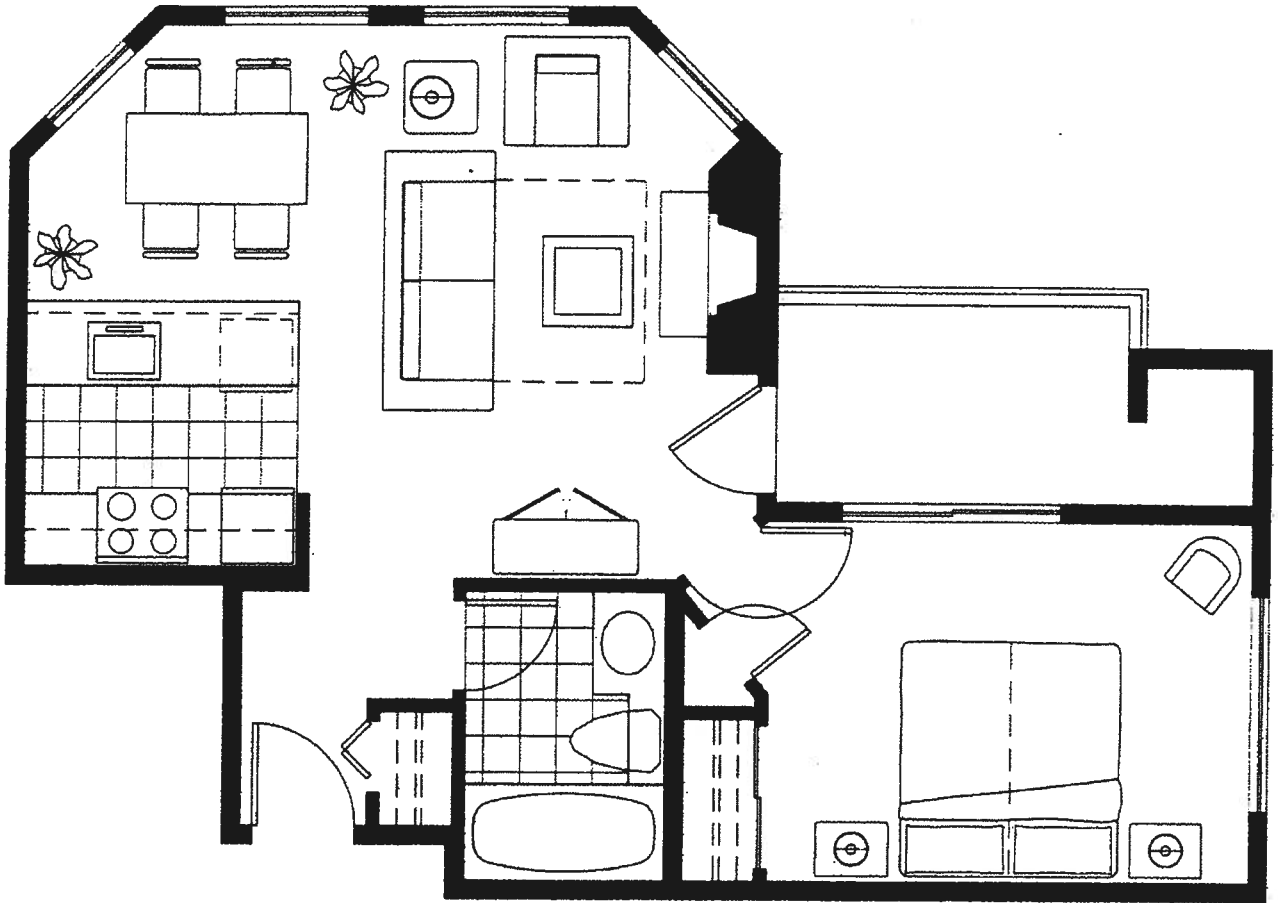


The Aspens - Trailside on Blackcomb

Suite C1

In effort to improve our product we reserve the right to make modifications to designs and features without further notice. All square footages shown are approximate.

888 SqFt

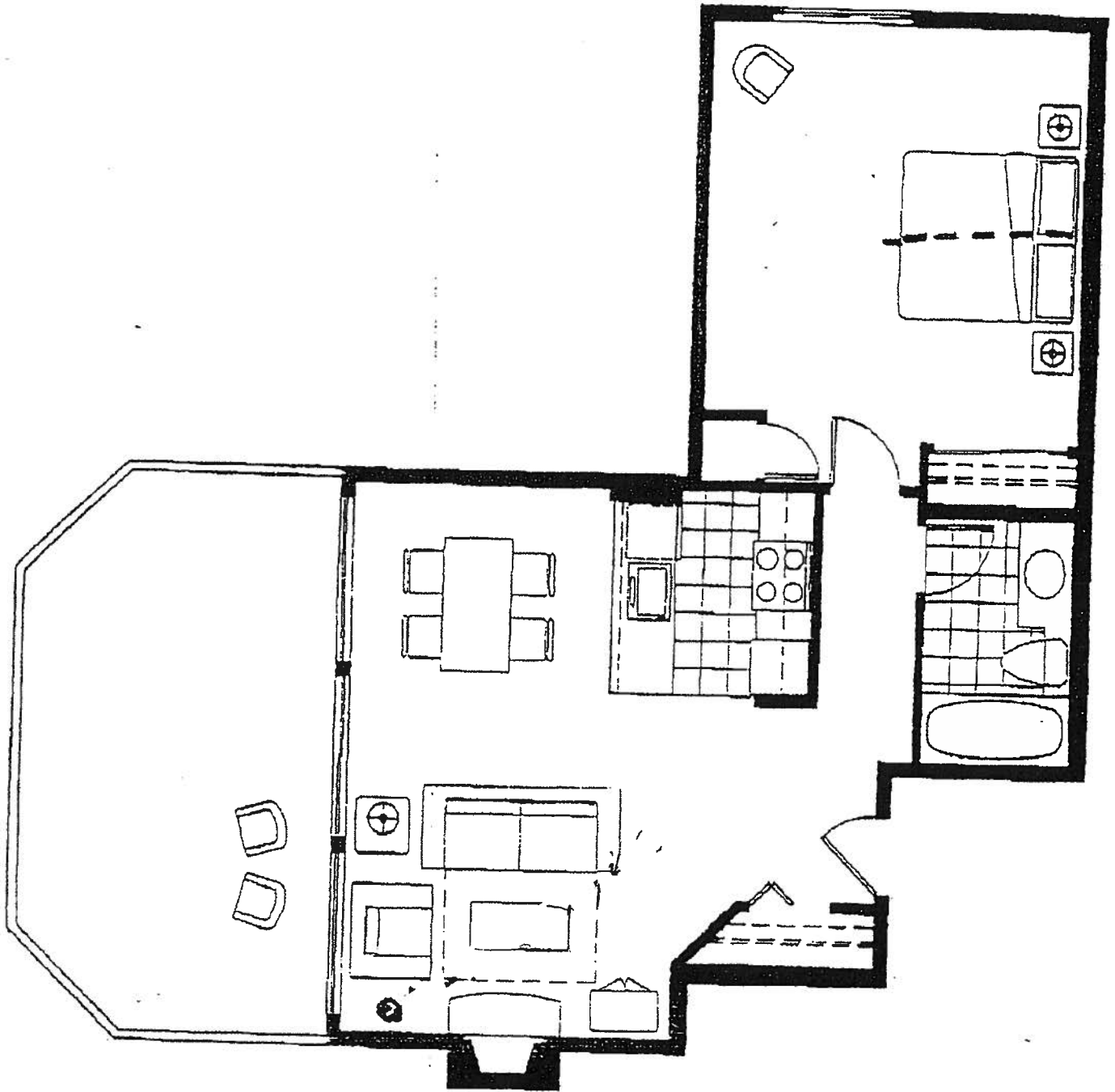


The Aspens

Suite D

In an effort to improve our product we reserve the right to make modifications to design and features without further notice. All square footages shown are approximate.

590 SqFt

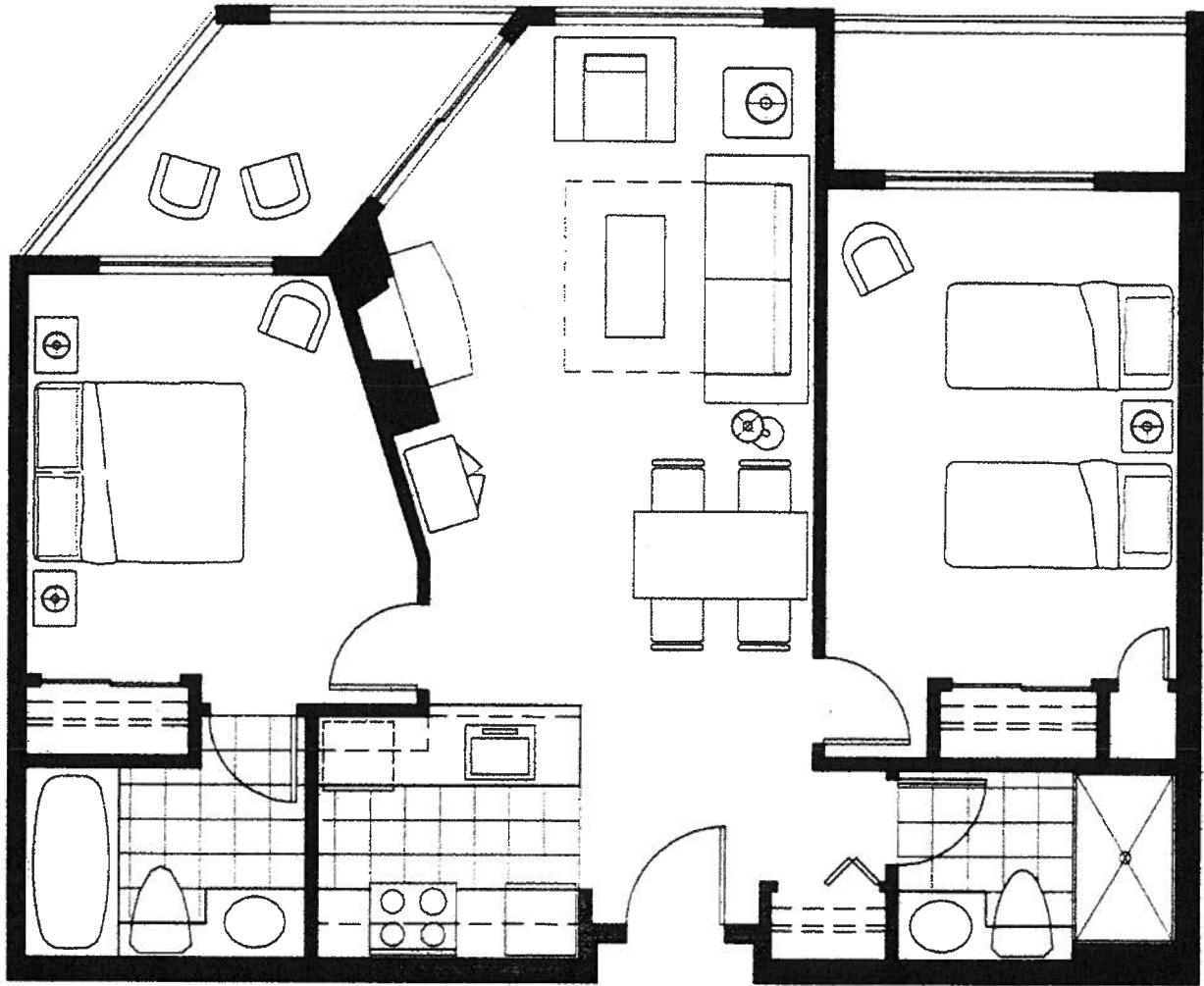


The Aspens - Trailside on Blackcomb

Suite D2

A 24 hour in business our products are reserved for you to make reservations to groups and families enjoy every night. All spaces feature down on carpeting.



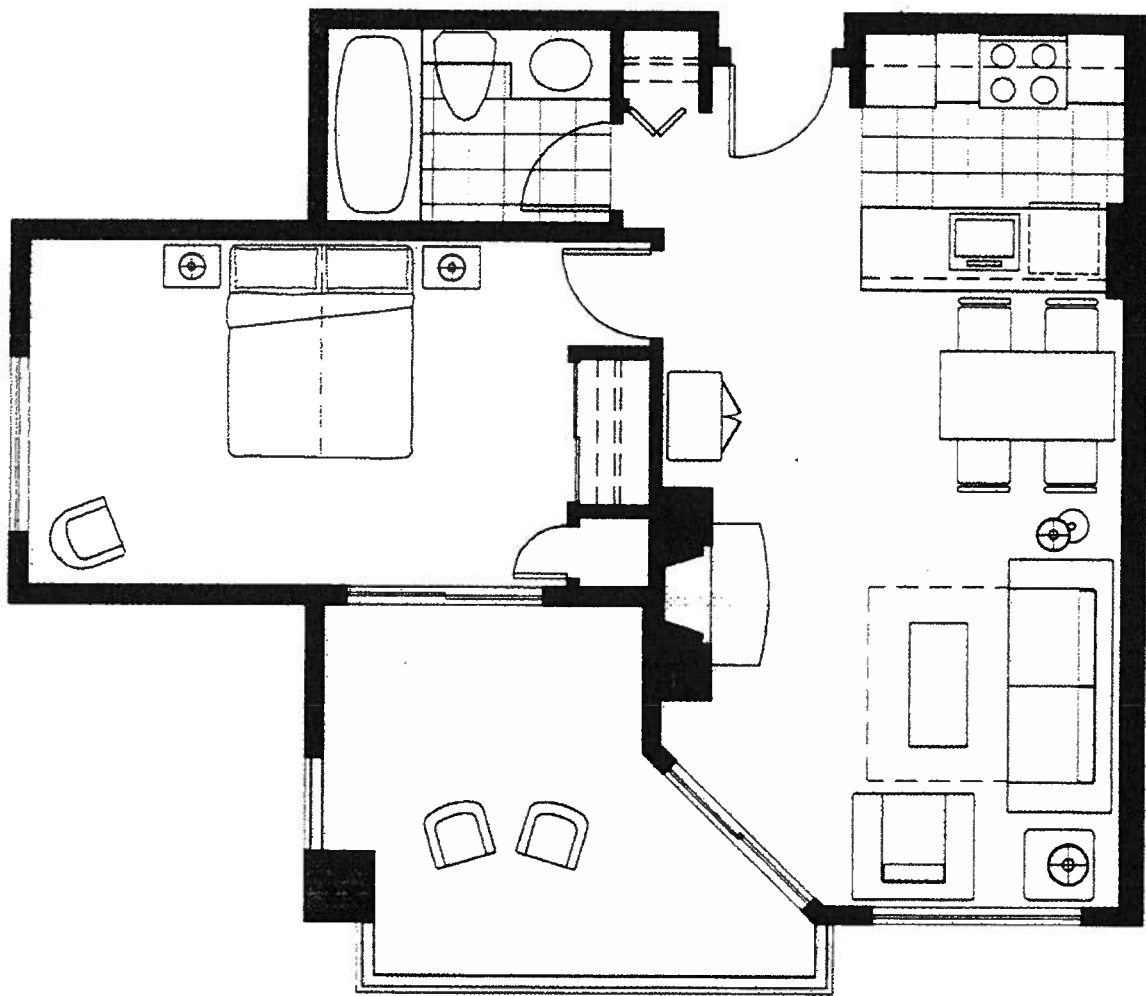


The Aspens - Trailside on Blackcomb

Suite E

In an effort to improve our product we reserve the right to make modifications to designs and features without further notice. All square footages shown are approximate.

807 Sqft



The Aspens - Trailside on Blackcomb

Suite G

In an effort to improve our product we reserve the right to make modifications to design and features without further notice. All square footages shown are approximates.

590 SqFt

The
ASPENS
Trailside on Blackcomb
FINAL PHASE

SUITE H ★ 705 SQ.FT.

