

PHASE 1
STRATA PLAN OF PART OF
LOT 1, DISTRICT LOT 3903
AND 4213, Plan 21364
Resort Municipality of Whistler

Scale: 1:750 m.



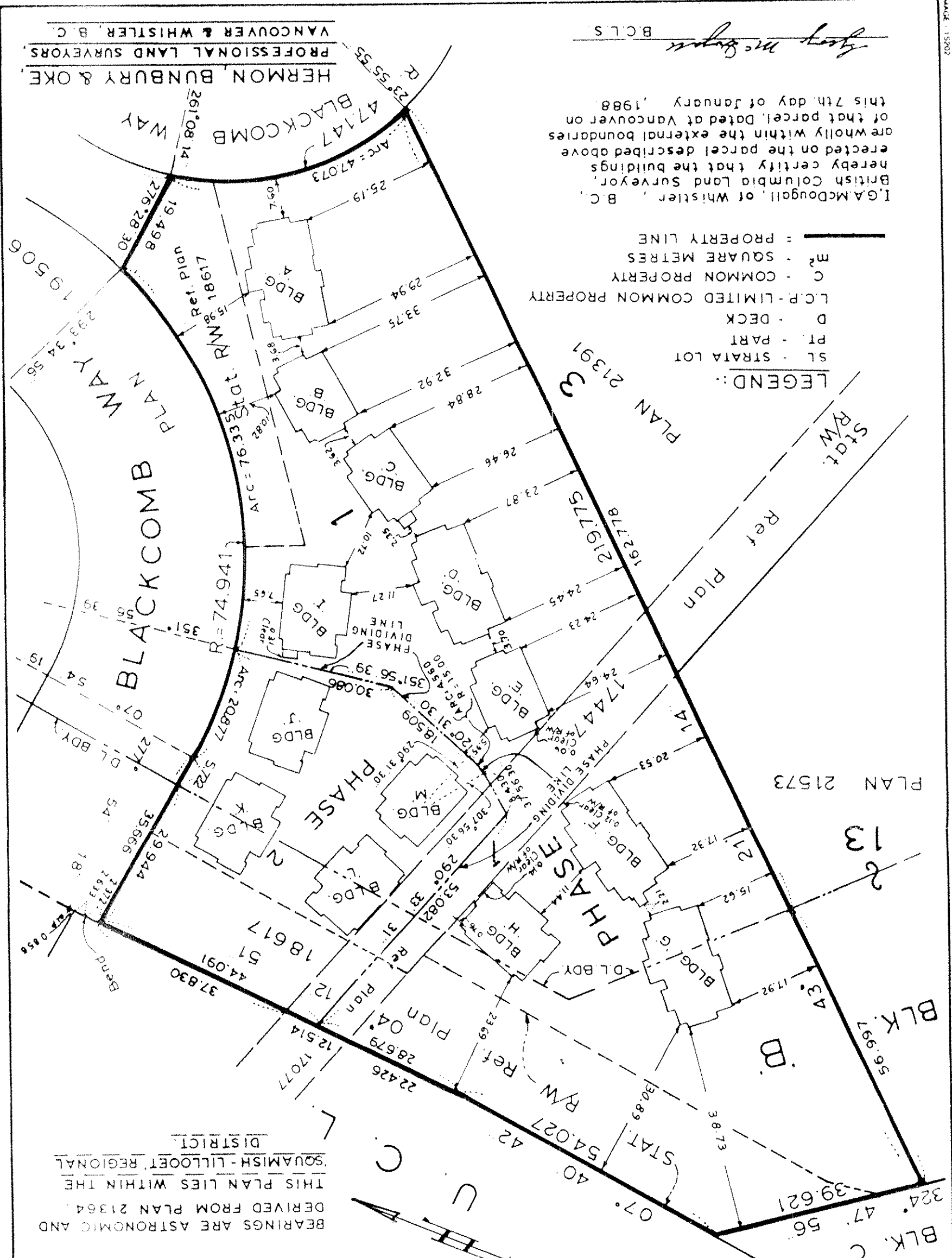
The Address for the Service of Documents
 on the Strata Corporation is
 The Owners' Strata Plan No. V.R. 2083
 c/o DAYAN & CO
 202-1807 Maritime Mews,
 Granville Island, Vancouver, B.C.
 V6H 3W7

Civic Address is:
 4501 Blackcomb Way,
 Whistler, B.C.
 VON 1B0.

First Sheet - Sheet 1 of 23 Sheets
 Strata Plan V.R. 2083 deposited and
 registered in the Land Title Office at
 Vancouver, B.C. this 15th day of
 FEBRUARY, 1988

[Signature]
 DEPUTY
 Registrar

BEARINGS ARE ASTROMOMIC AND
 DERIVED FROM PLAN 21364.
 THIS PLAN LIES WITHIN THE
 SOUAMISH-LILLOET REGIONAL
 DISTRICT.



- LEGEND:**
- SL - STRATA LOT
 - PT - PART
 - D - DECK
 - L.C.P. - LIMITED COMMON PROPERTY
 - C - COMMON PROPERTY
 - m² - SQUARE METRES
 - = PROPERTY LINE

I.G. McDougall, of Whistler, B.C.,
 British Columbia Land Surveyor,
 hereby certifies that the buildings
 erected on the parcel described above
 are wholly within the external boundaries
 of that parcel. Dated at Vancouver on
 this 7th day of January, 1988.

HERMON, BUNBURY & OKE
 PROFESSIONAL LAND SURVEYORS
 VANCOUVER & WHISTLER, B.C.

MADE: 15202

PHASE 1:
CONDOMINIUM ACT

FORM 1	FORM 2	FORM 3
--------	--------	--------

LOT NO.	SHEET NO.	Schedule of Unit Entitlement	Schedule of Interest Upon Destruction	Schedule of Voting Rights
---------	-----------	------------------------------	---------------------------------------	---------------------------

1	4,5,6,19	427	234	1
2	4,5,6,7,19	549	223	1
3	4,5,6,19	430	234	1
4	4,5,6,20	430	230	1
5	4,5,6,20	430	234	1
6	4,5,6,20	434	226	1
7	4,5,6,20	435	228	1
8	9,10,11,19	427	245	1
9	9,10,11,12,19	531	220	1
10	9,10,11,19	429	243	1
11	9,10,11,20	434	240	1
12	9,10,11,20	432	245	1
13	14,15,16,19	434	245	1
14	14,15,16,17,19	535	223	1
15	14,15,16,19	434	236	1
16	14,15,16,19	431	238	1
17	14,15,16,17,19	531	225	1
18	14,15,16,19	432	240	1
19	14,15,16,17,21	462	200	1
20	14,15,16,17,21	463	216	1
21	9,10,11,12,21	446	234	1
22	9,10,11,12,21	444	238	1
AGGREGATE		10,000	5097	22

S.M.S.
January 7th, 1988.

PHASE 1:
CONDOMINIUM ACT.

FORM 3	FORM 2	FORM 1	SHEET NO	LOT NO
Schedule of Voting Rights	Schedule of Interest Upon Destruction	Schedule of Unit Entitlement	SHEET NO	LOT NO
			See	

CERTIFICATE OF APPROVAL - B.C. Reg. 74/78
 Approved as Phase 1 of a 2 Phase Strata
 plan under the Condominium Act,
 dated this 21 day of January, 1988
 M.M.L.
 Municipal Approving Officer for
 Resort Municipality of Whistler

Accepted as to Forms 1, 2 and 3
 on the 29 day of January, 1988
 Superintendent of Real Estate

STATUTORY DECLARATION:

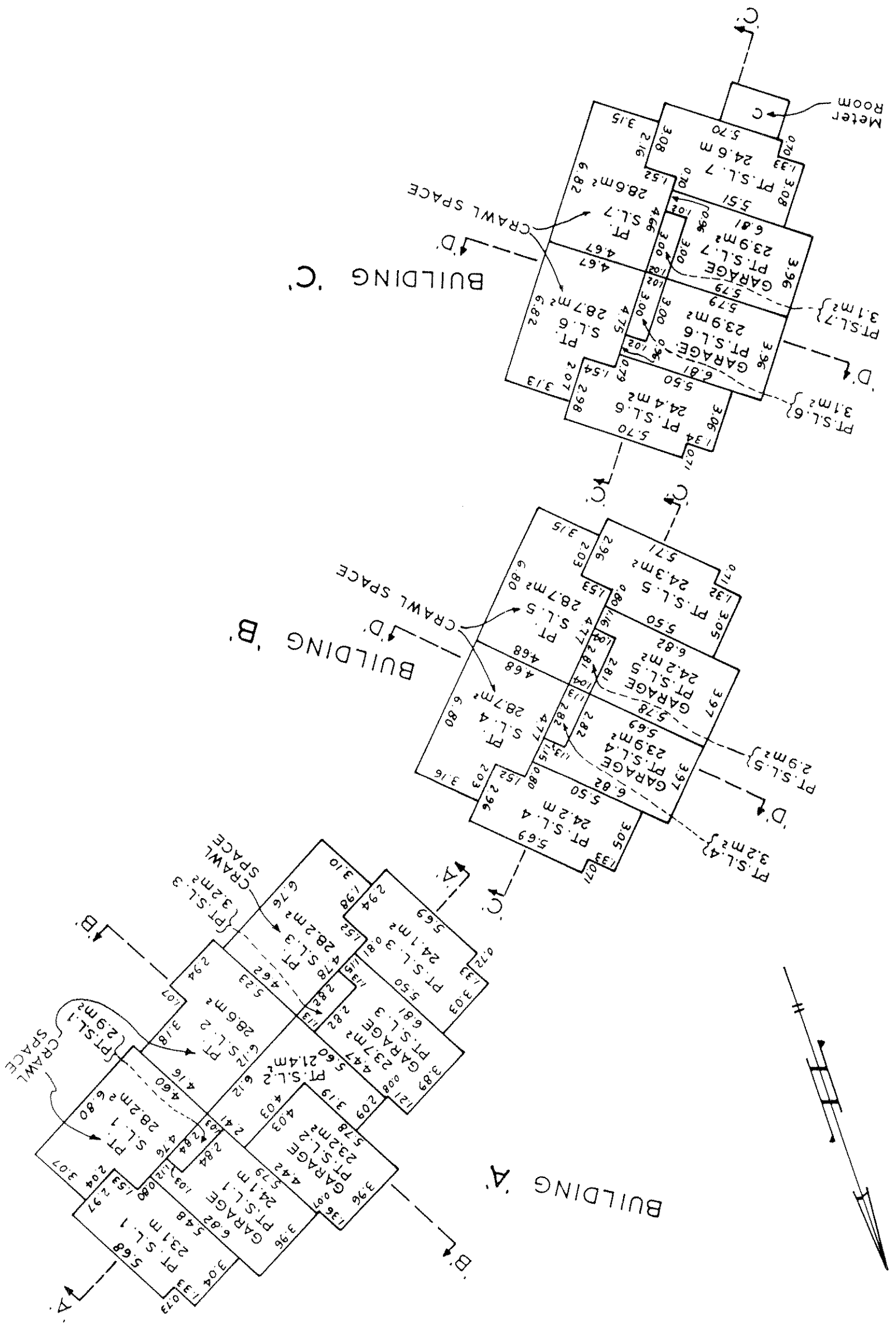
1/WE, the undersigned, do solemnly declare that:
 1 I/WE (am/are) the Owner-Developer, or
 the duly authorized Agent of the Owner-Developer
 2 The Strata Plan is entirely for residential use
 3 I/WE make this solemn declaration conscientiously
 believing it to be true and knowing that it is of the
 some force and effect as if made under Oath

Declared before me at Vancouver in the
 Province of British Columbia, this 9... day of
 January, A.D. 1988
 A Notary Public in and for the Province
 of British Columbia

I, G.A. McDougall, British Columbia Land Surveyor,
 hereby certify that the buildings shown in this Strata Plan
 have not, as of the 7th day of January, 1988,
 been previously occupied.
 Dated at Vancouver, British Columbia,
 this 7th day of January, 1988.
 B.C.L.S.

Mortgagee	Owner - Developer
Security Pacific Bank Canada	UNITED PROPERTIES LTD.
Authorized Signatory	Authorized Signatory
January 7th 1988	January 7th 1988

January 7th 1988
5/22/88

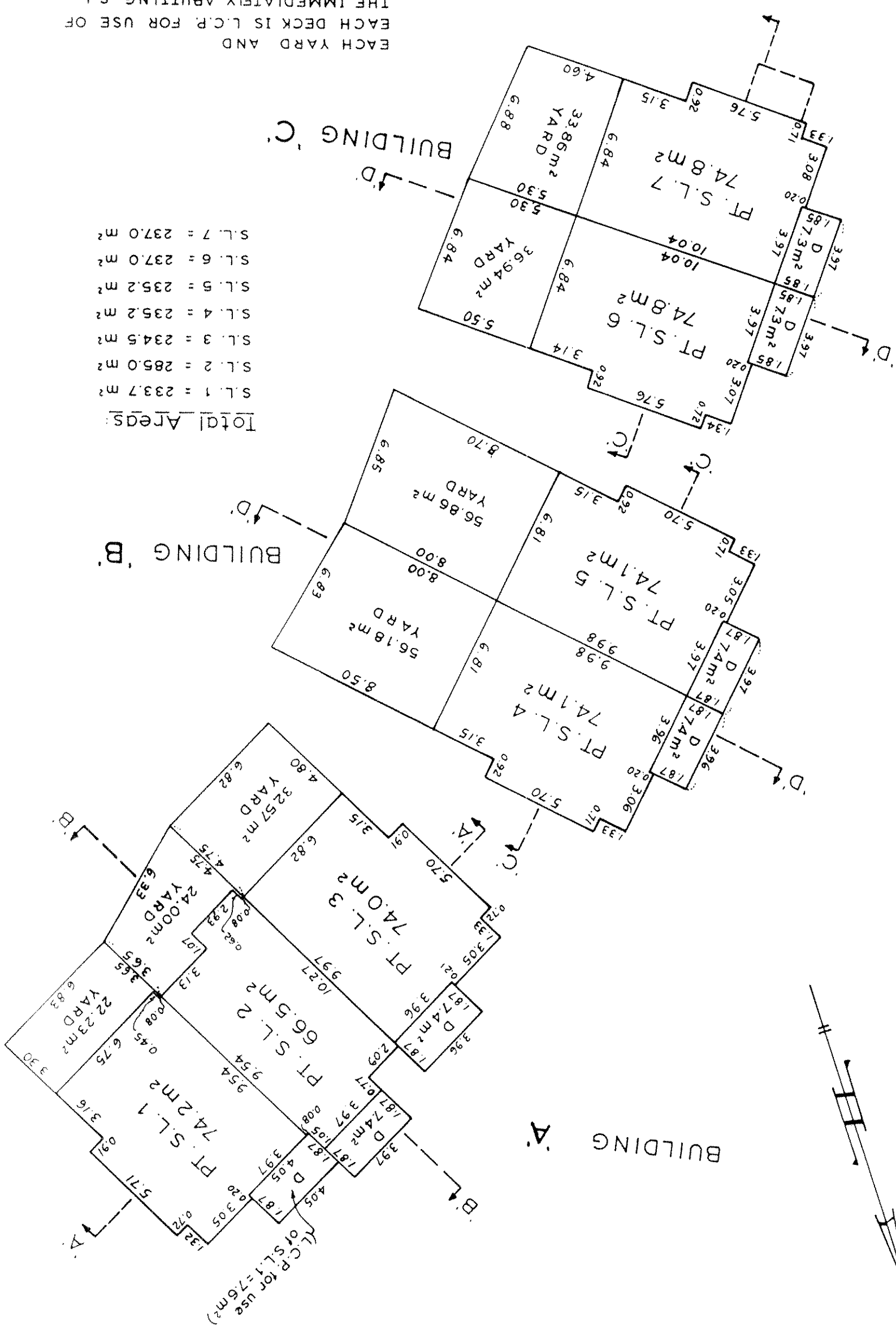
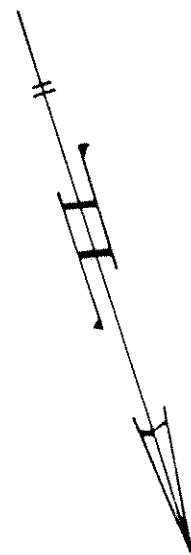


PHASE 1
 BASEMENT
 SCALE: 1:200 M.

Sheet 4 of 23 Sheets
 STRATA PLAN
 V.R. 2083

STRATA PLAN
V.R. 2083

PHASE 1
MAIN FLOOR
SCALE: 1:200 M.

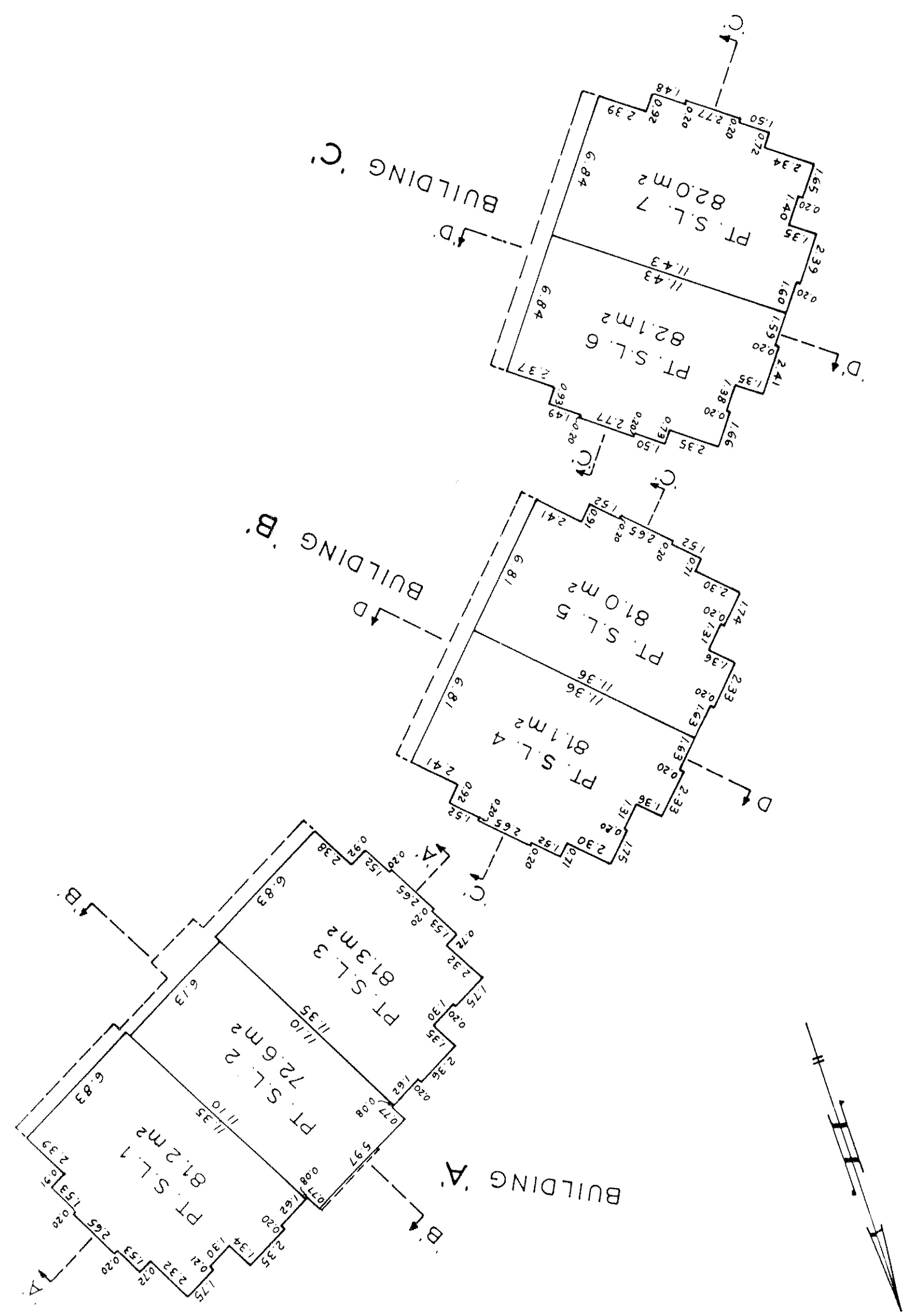


Total Areas:

S.L. 1 = 233.7 m ²
S.L. 2 = 285.0 m ²
S.L. 3 = 234.5 m ²
S.L. 4 = 235.2 m ²
S.L. 5 = 235.2 m ²
S.L. 6 = 237.0 m ²
S.L. 7 = 237.0 m ²

EACH YARD AND
EACH DECK IS L.C.P. FOR USE OF
THE IMMEDIATELY ADJUTING S.L.

January 7th 1988
J.M.C.



PHASE 1
 SECOND FLOOR
 SCALE: 1:200 m.

Sheet 6 of 23 Sheets.
 STRATA PLAN
 V.R. 2083

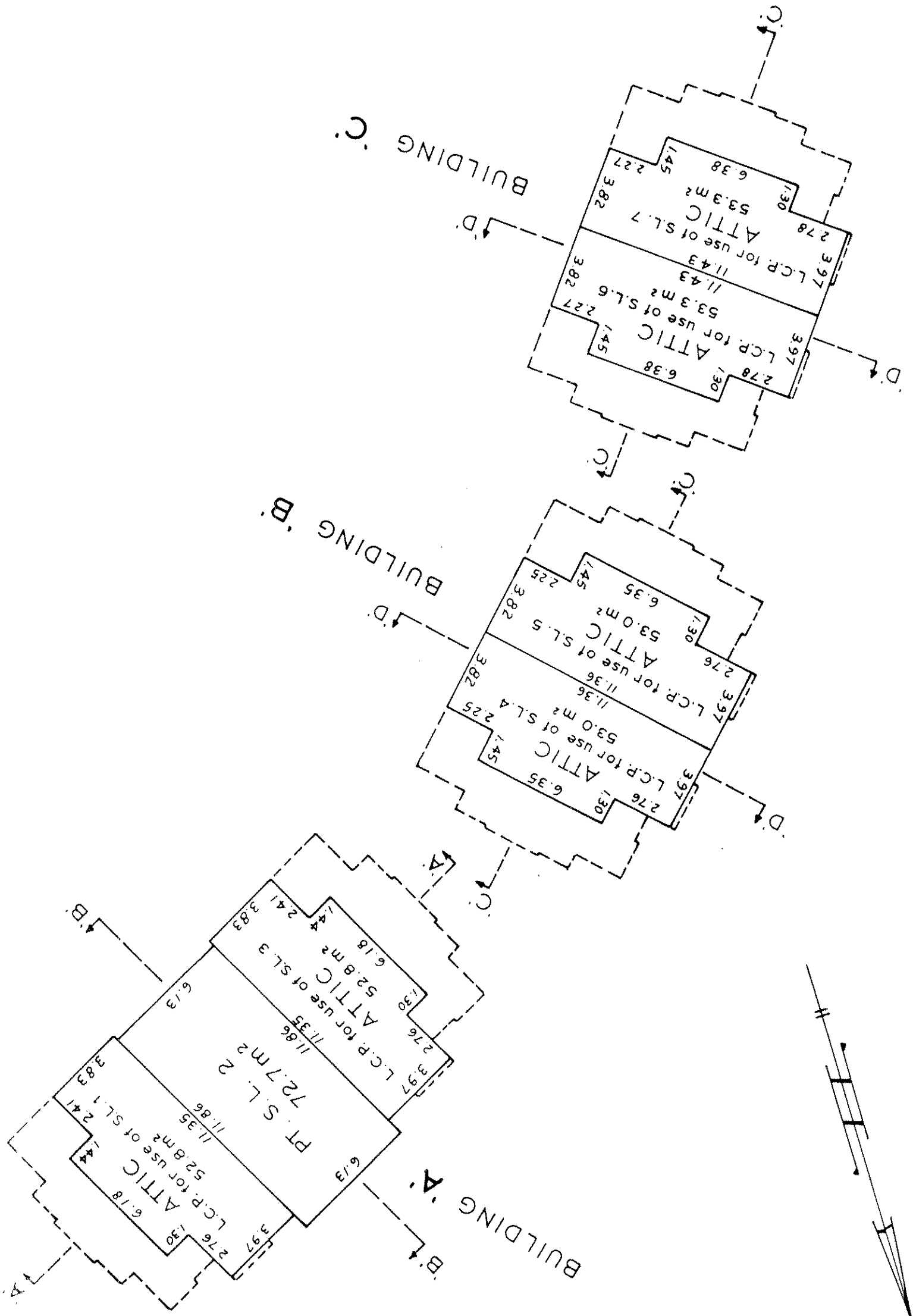
STRATA PLAN
V.R. 2083

Sheet 7 of 23 Sheets.

THIRD FLOOR & ATTICS

PHASE 1

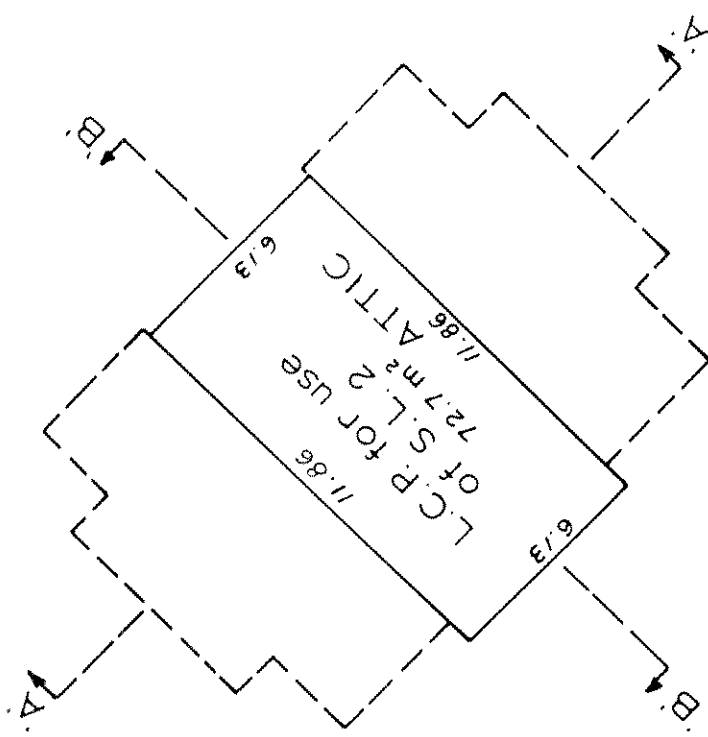
SCALE: 1:200 M.



5:45399:0
JANUARY 7th 1988
G.M.C.

Sheet 8 of 23 Sheets.
STRATA PLAN
V.R. 2083

PHASE 1
ATTIC
SCALE: 1:200 m.



BUILDING 'A'

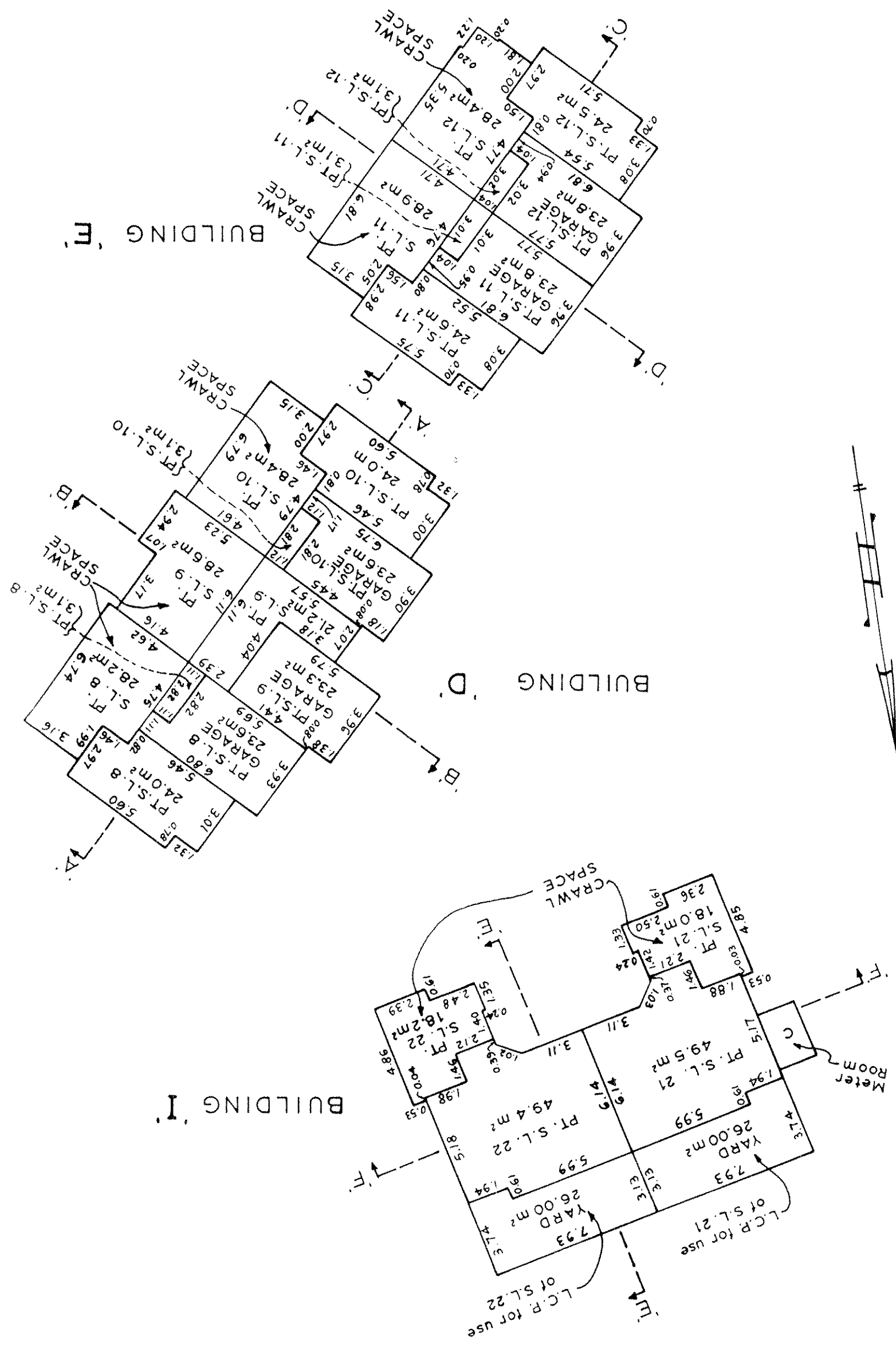


ms
January 7th 1988
S-4539.0

STRATA PLAN
V.R. 2083

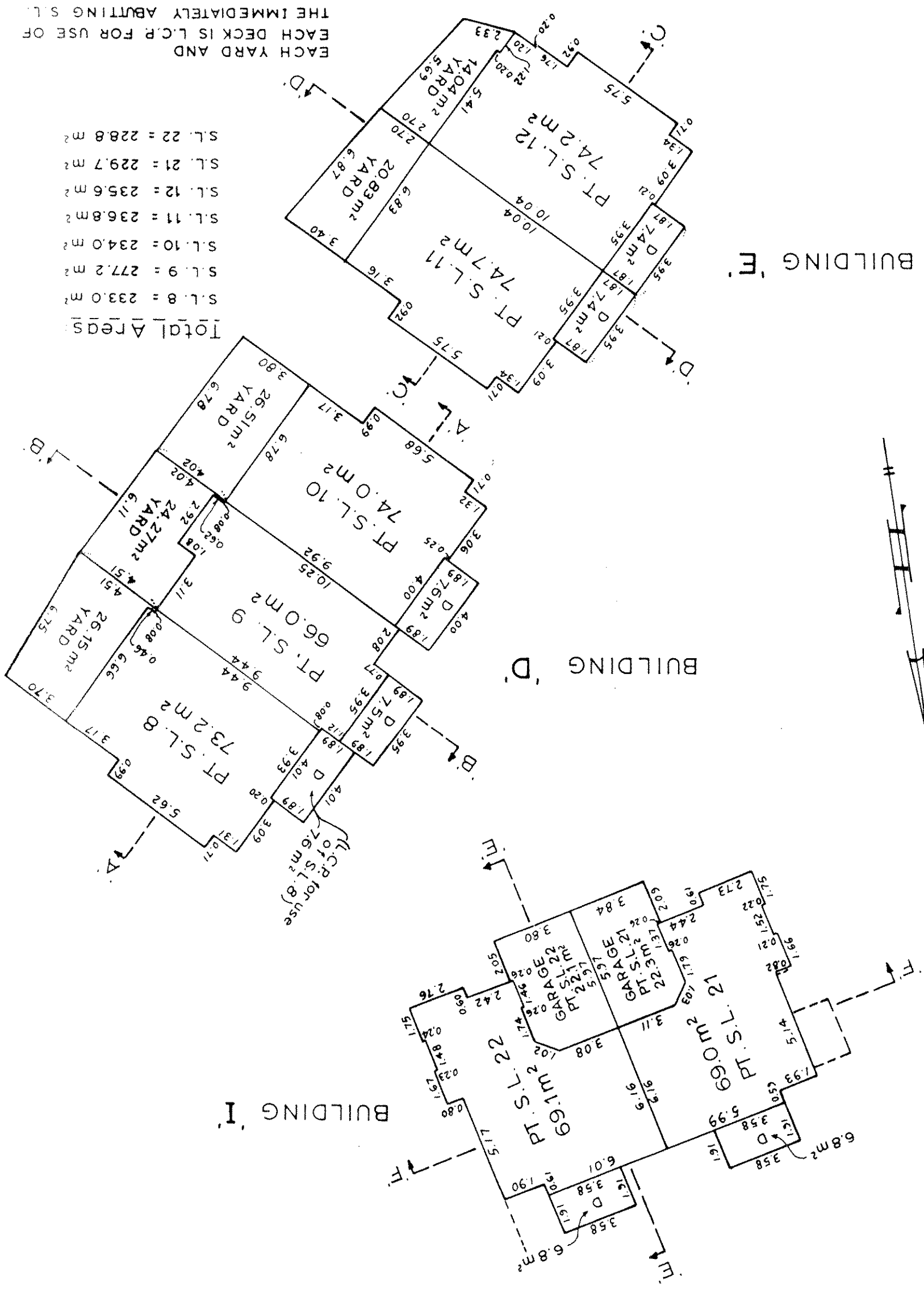
PHASE 1
BASEMENT

SCALE: 1:200 m.



STRATA PLAN
V.R. 2083

PHASE 1
MAIN FLOOR
SCALE: 1:200 m.

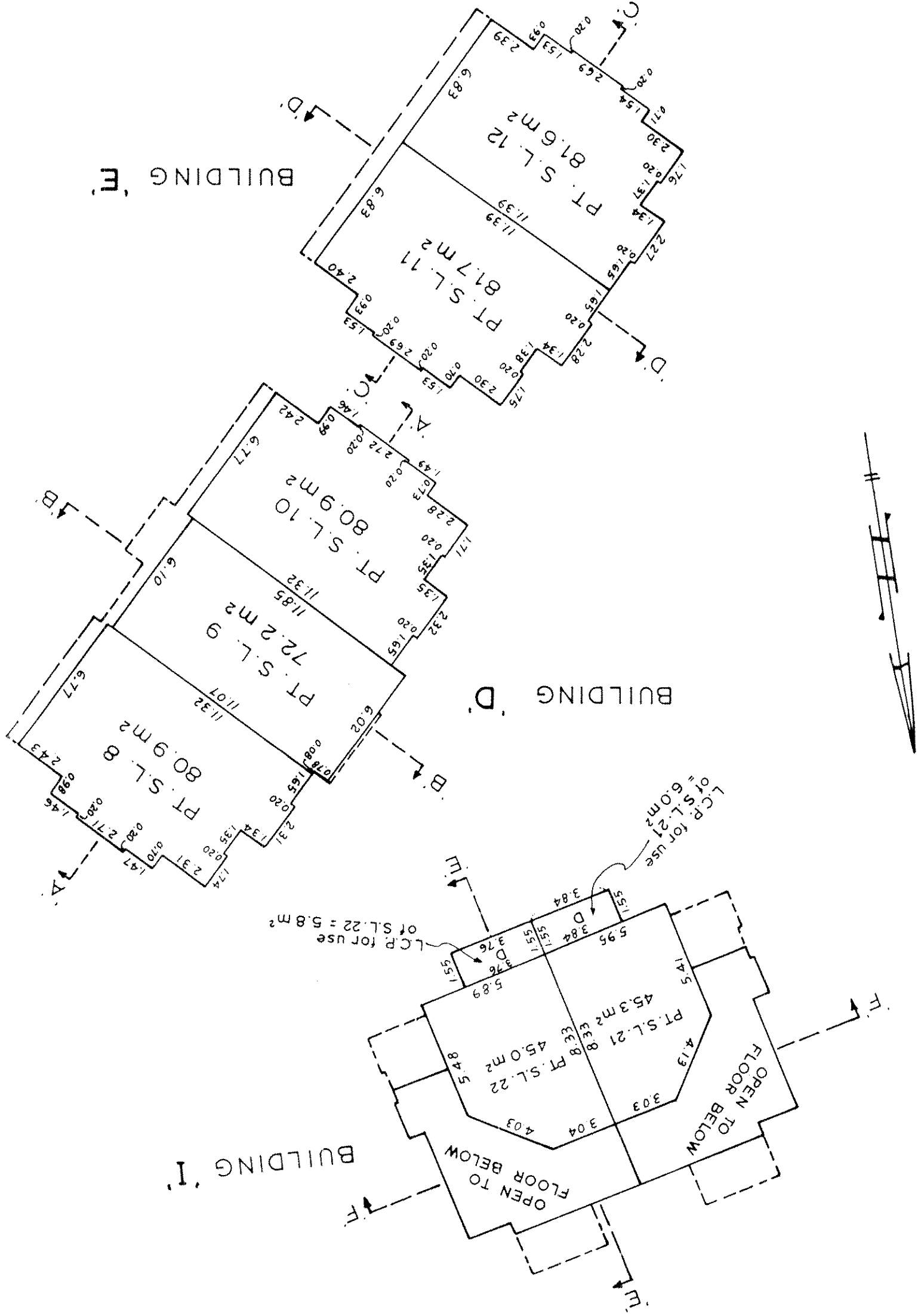


- Total Areas:
- S.L. 8 = 233.0 m²
 - S.L. 9 = 277.2 m²
 - S.L. 10 = 234.0 m²
 - S.L. 11 = 236.8 m²
 - S.L. 12 = 235.6 m²
 - S.L. 21 = 229.7 m²
 - S.L. 22 = 228.8 m²

EACH YARD AND
EACH DECK IS L.C.P. FOR USE OF
THE IMMEDIATELY ABUTTING S.L.

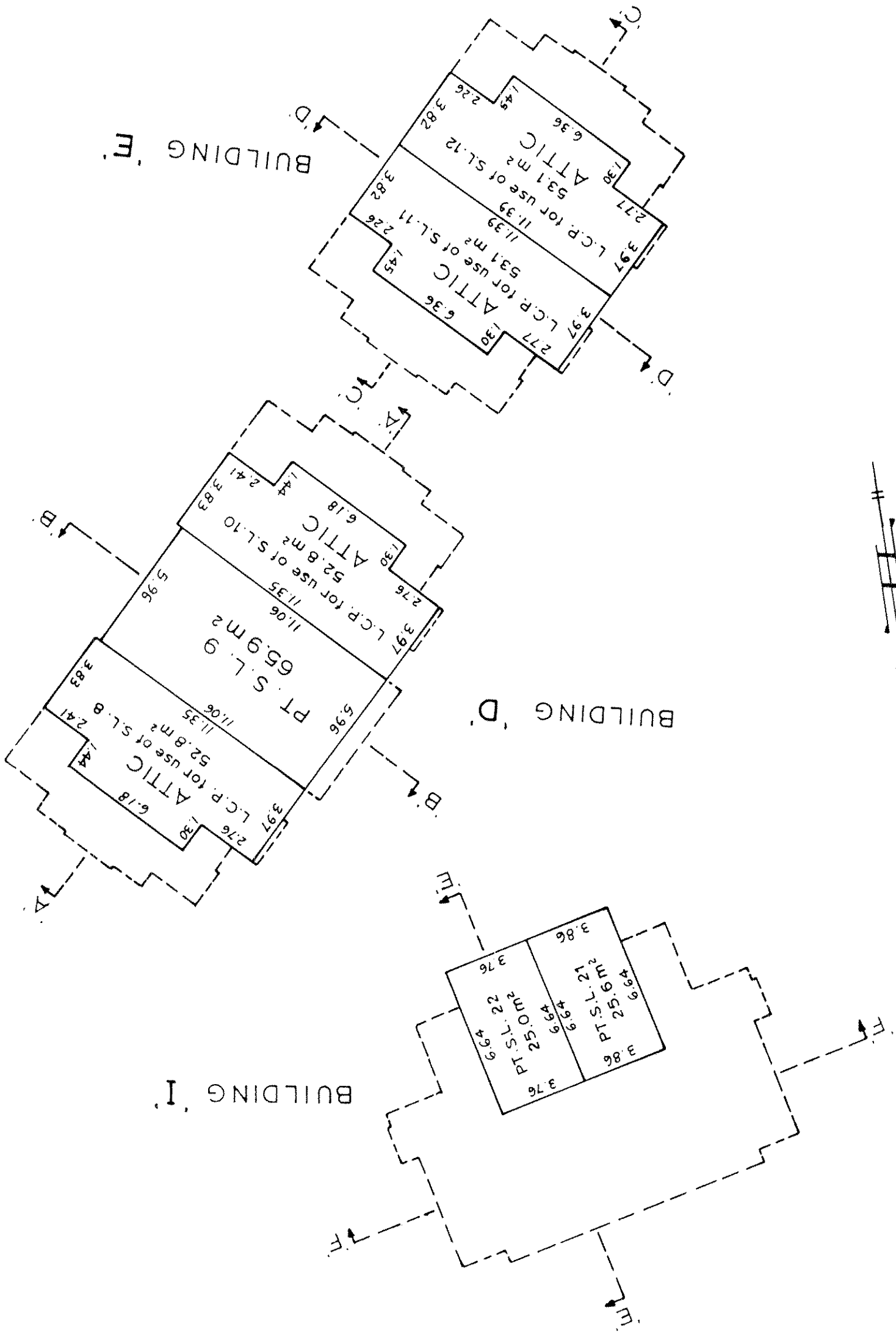
January 7th 1988
S.4539.0

PHASE 1
SECOND FLOOR
SCALE: 1:200 M.



S-4539.0
 January 7th 1988
 B. Kelly

Wm

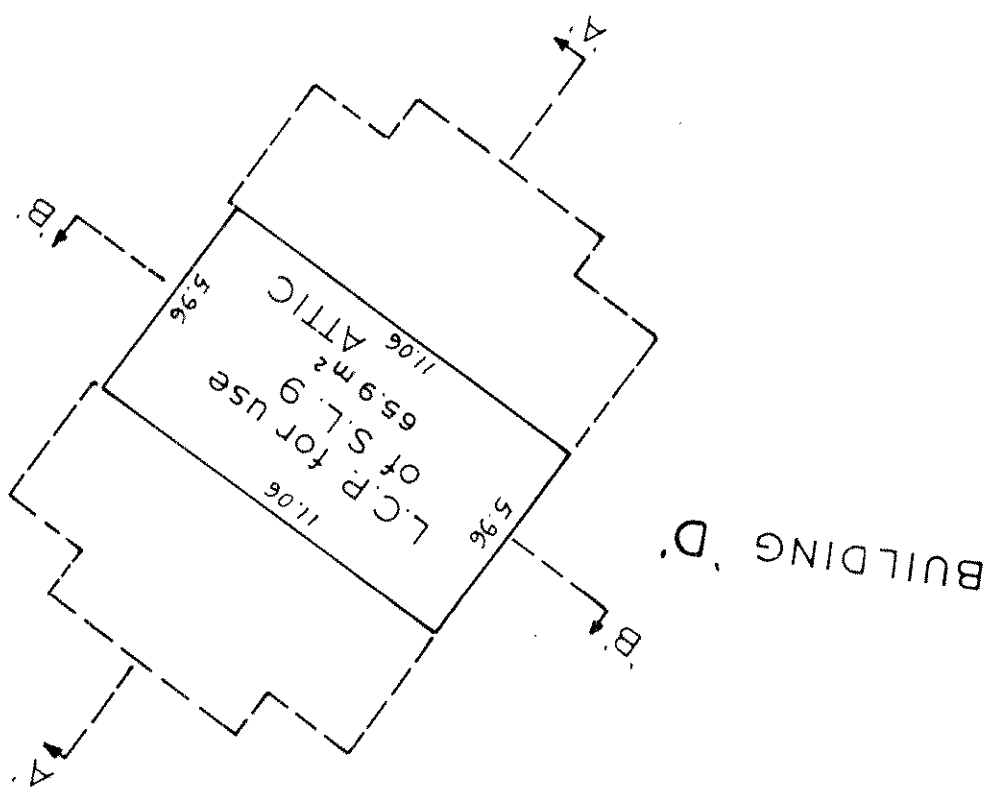


PHASE 1
THIRD FLOOR & ATTICS

SCALE: 1:200 M.

STRATA PLAN
V.R. 2083

8 m h
January 7th, 1988



SCALE: 1:200 m.

PHASE 1
ATTIC

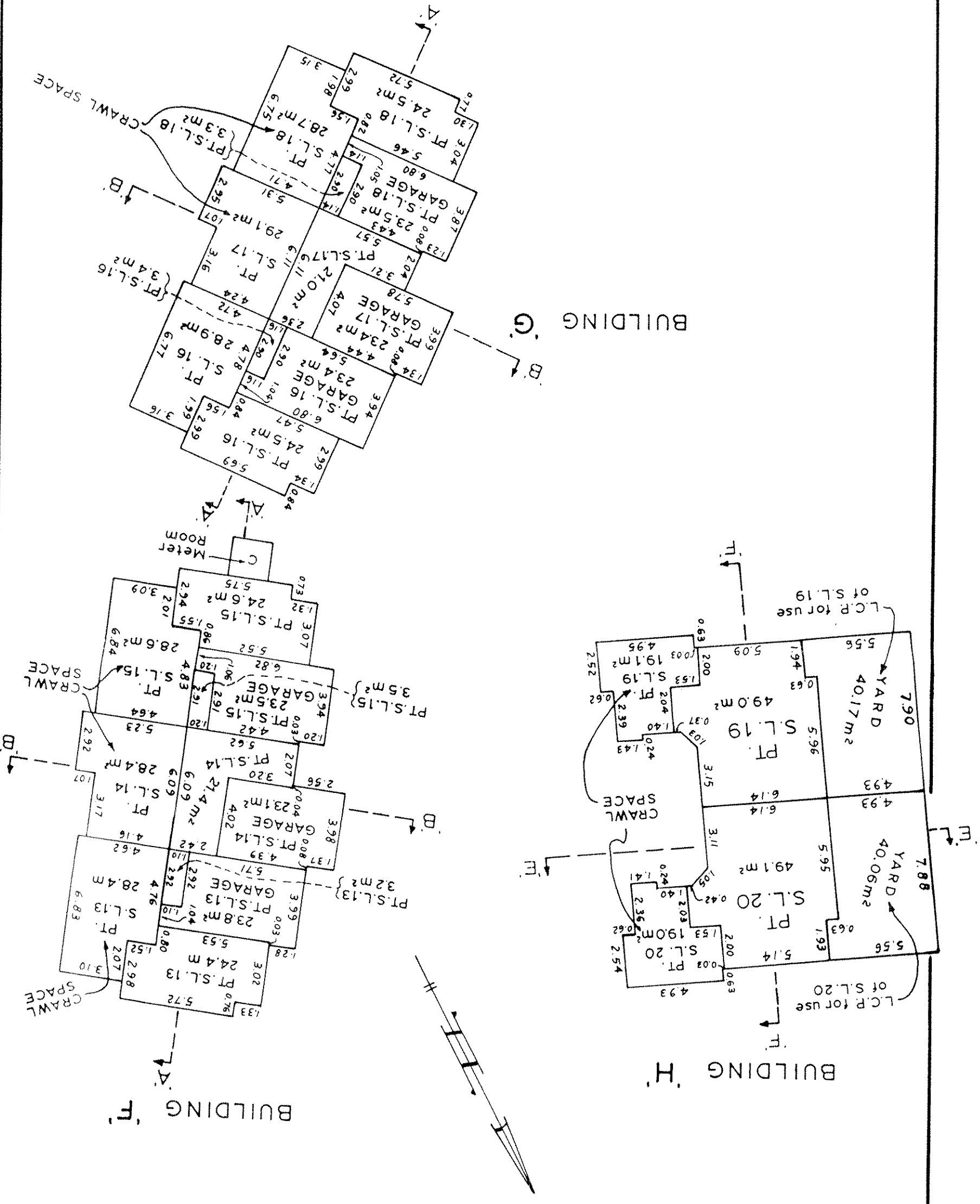
Sheet 13 of 23 Sheets.
STRATA PLAN
V.R. 2083

STRATA PLAN V.R. 2083

Sheet 14 of 23 Sheets.

SCALE: 1:200 M.

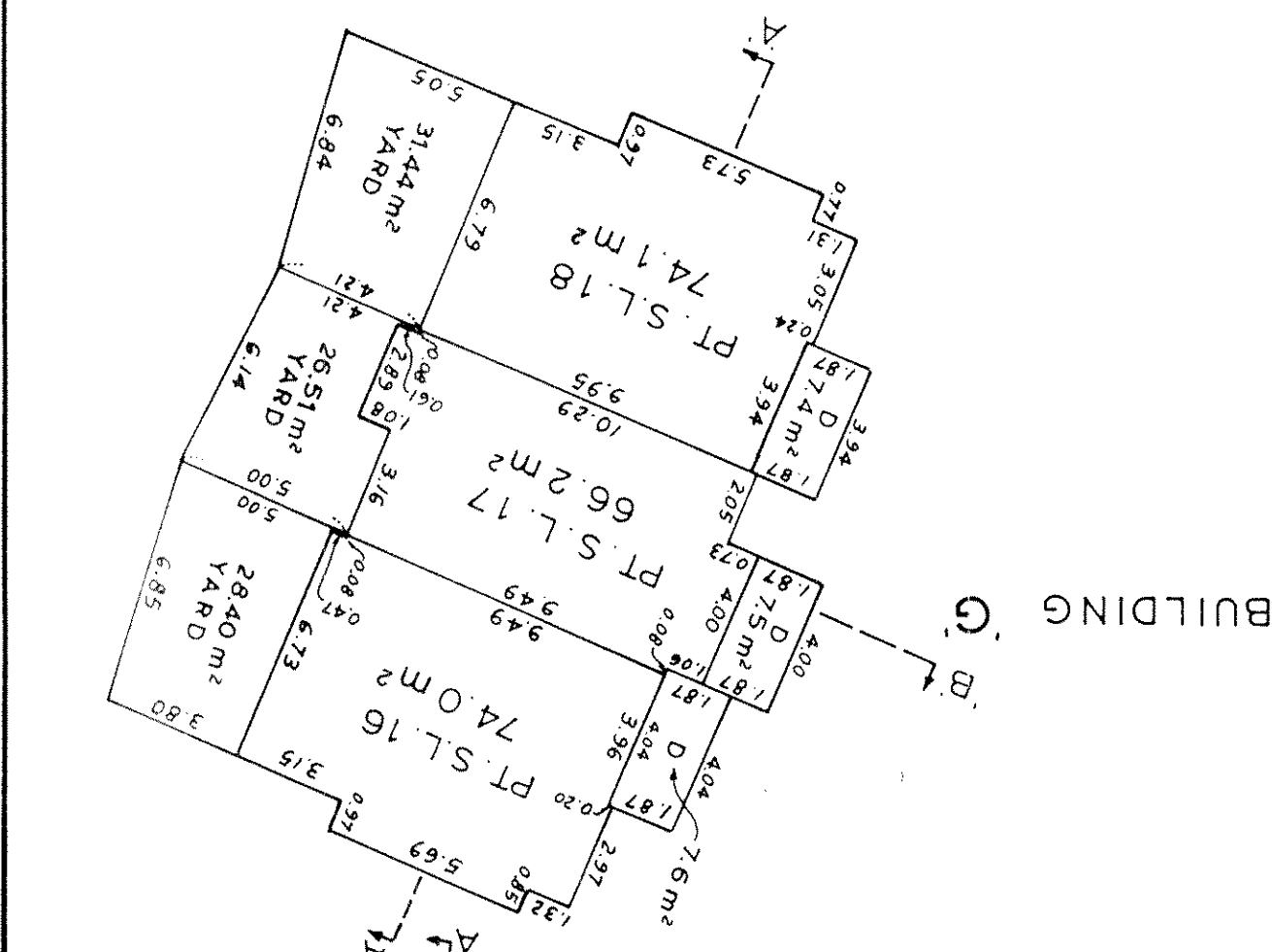
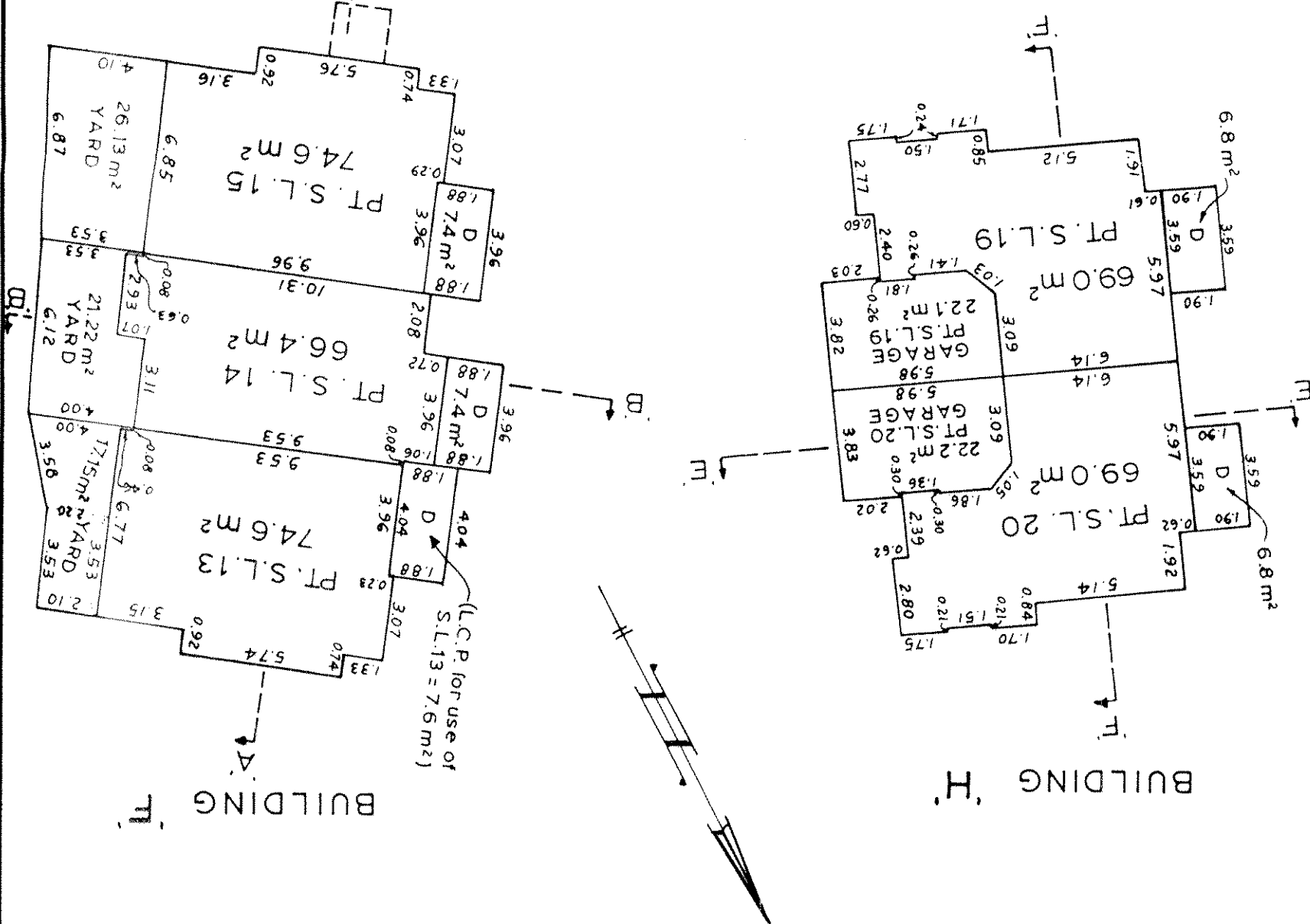
PHASE 1 BASEMENT



5/2/88
January 7th, 1988
S-4539.0

PHASE 1
MAIN FLOOR
SCALE: 1:200 M.

STRATA PLAN
V.R. 2083



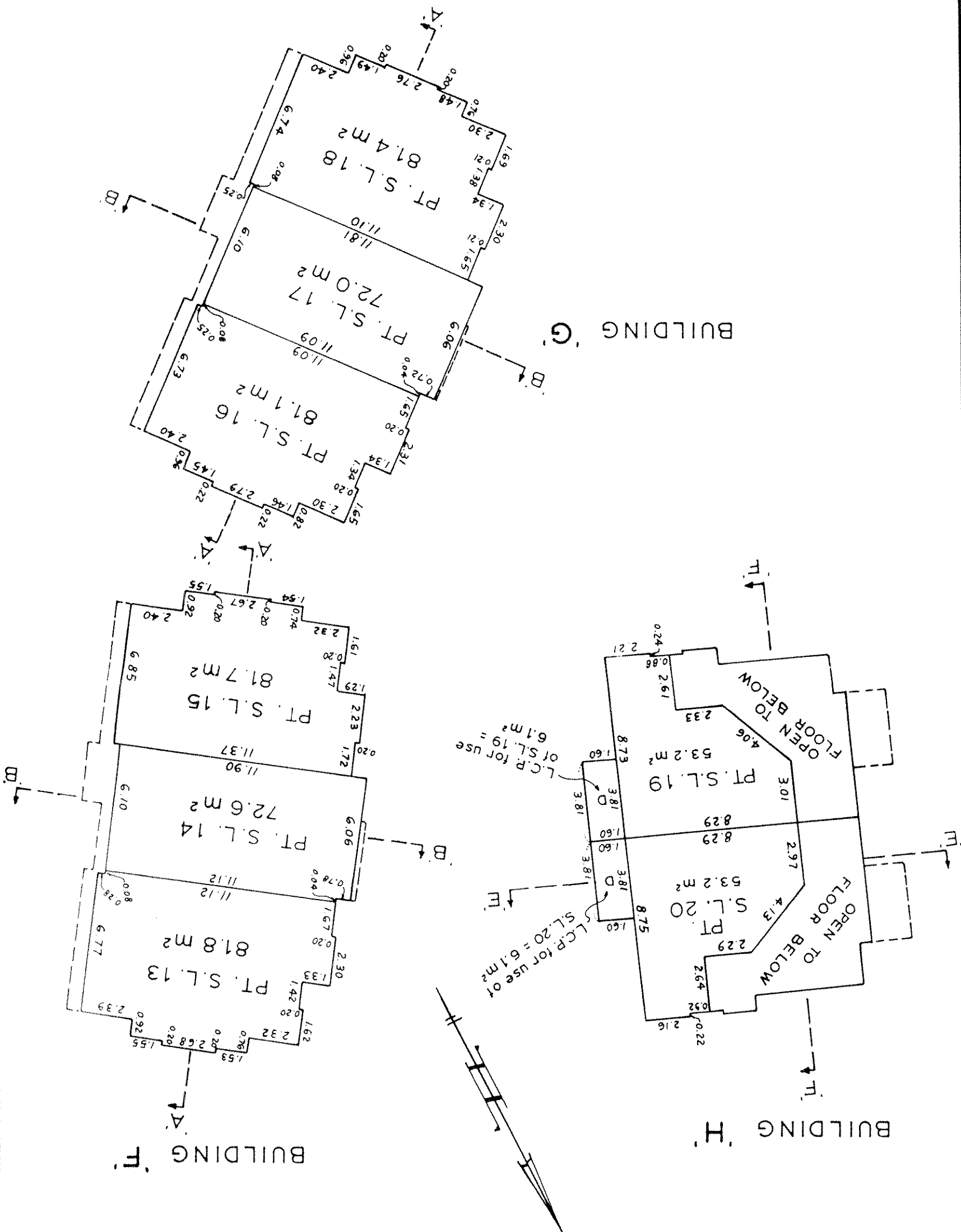
Total Areas:

S.L. 20 =	237.9 m ²
S.L. 19 =	237.2 m ²
S.L. 18 =	235.5 m ²
S.L. 17 =	278.1 m ²
S.L. 16 =	235.3 m ²
S.L. 15 =	236.5 m ²
S.L. 14 =	278.7 m ²
S.L. 13 =	236.2 m ²

EACH YARD AND EACH DECK IS L.C.P. FOR USE OF THE IMMEDIATELY ABUTTING S.L.

January 7th, 1988
S-4559

PHASE 1
SECOND FLOOR
SCALE: 1:200 m.



Jan 8
January 7th 1988
S. 4539

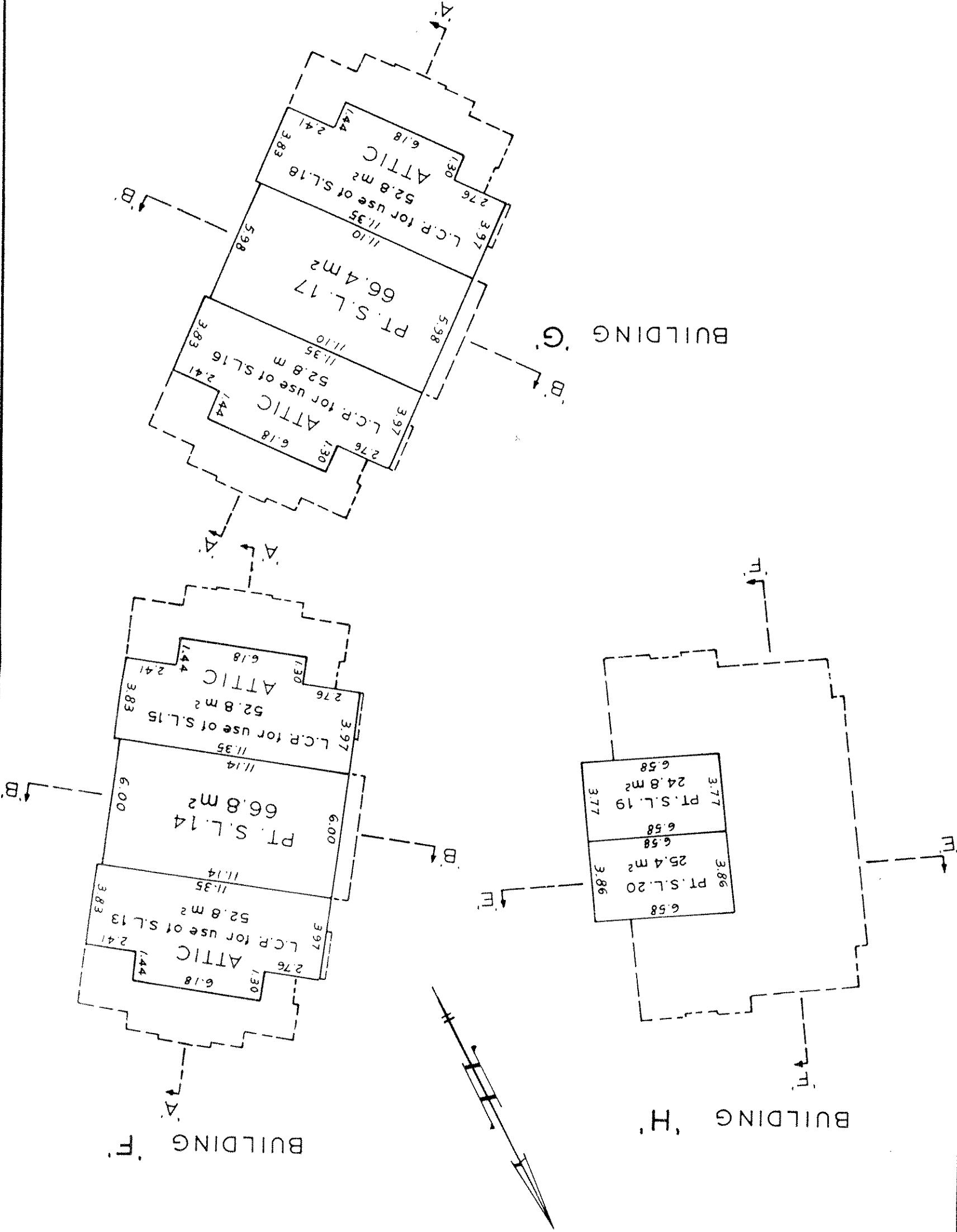
ID:596-11/2

STRATA PLAN
V.R. 2083

THIRD FLOOR & ATTICS

PHASE 1

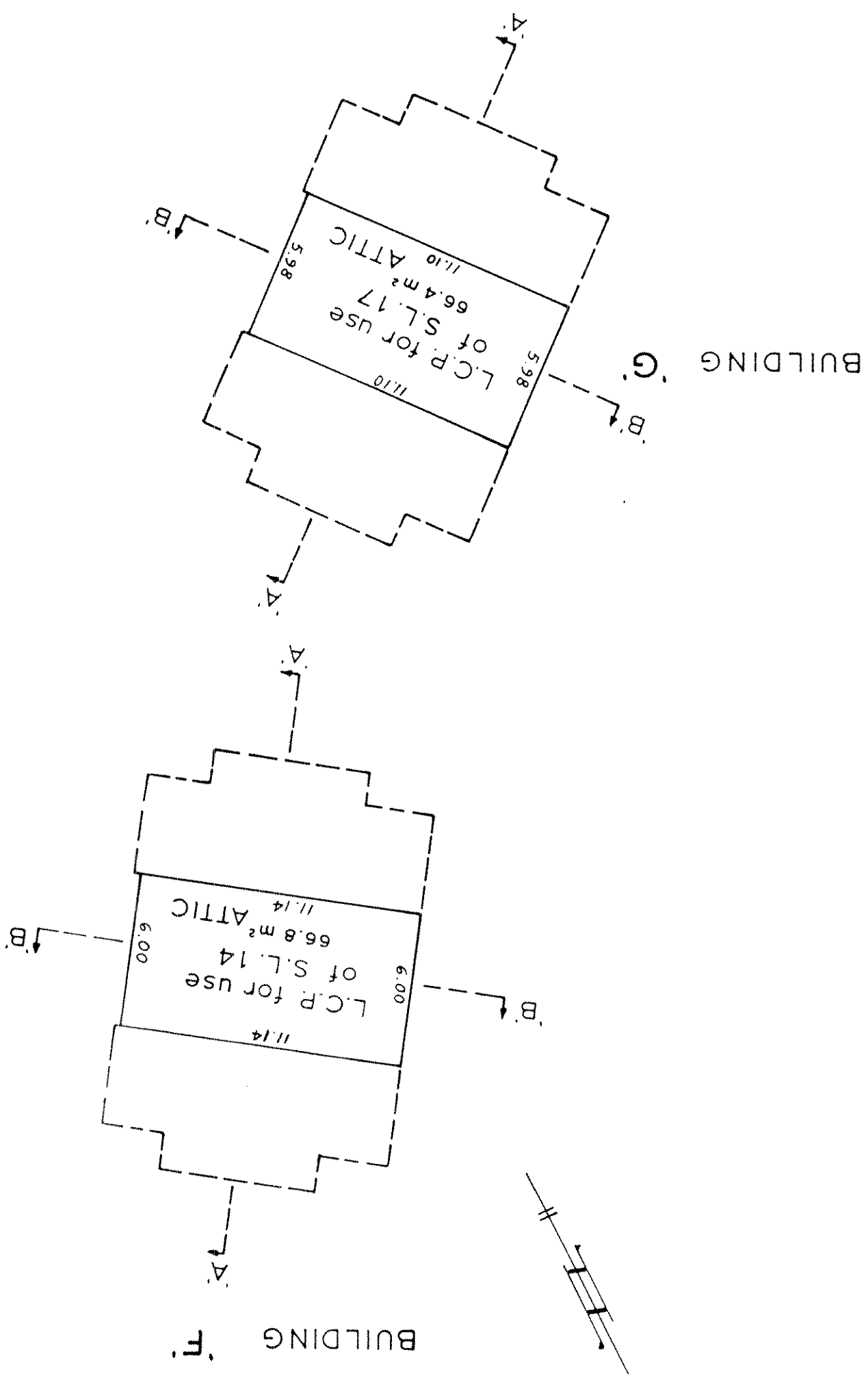
SCALE: 1:200 m.



3008
January 7th, 1988
S-4539.0

10-506-1112

January 7th, 1988
B.K.B.

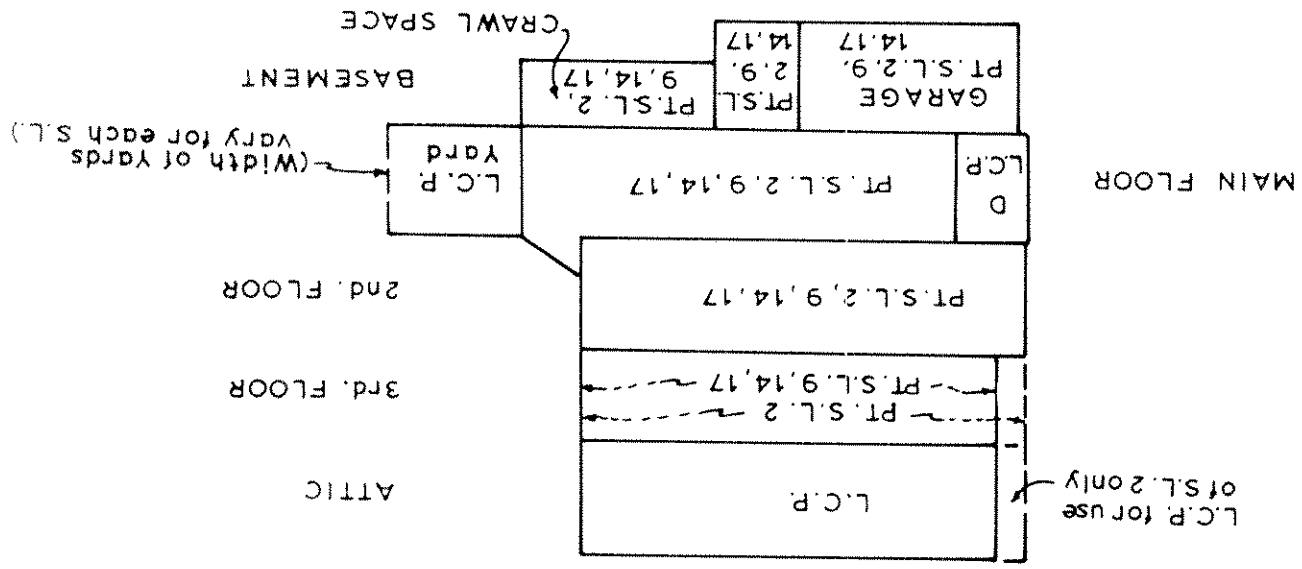


SCALE: 1:200 m.

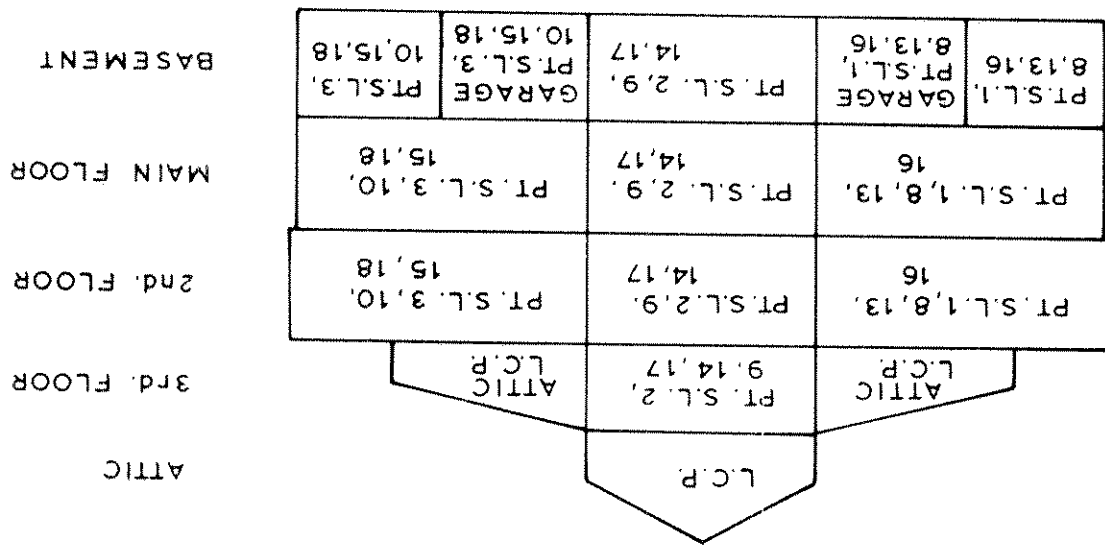
PHASE 1
ATTIC

Sheet 18 of 23 Sheets.
STRATA PLAN
V.R. 2083

January 7th, 1988
JWC



SECTION 'B-B'



SECTION 'A-A'

SCALE: 1:200 m.

Typical for Buildings 'A', 'D', 'F' & 'G'

SECTIONS

PHASE 1

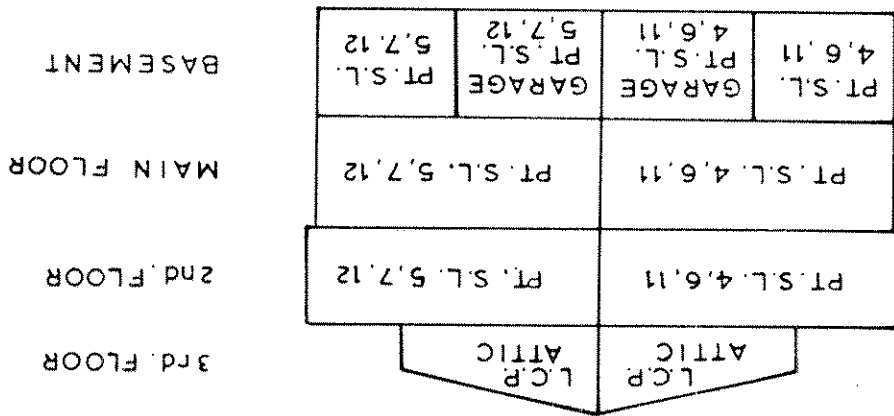
V.R. 2083
 STRATA PLAN

PHASE 1
SECTIONS

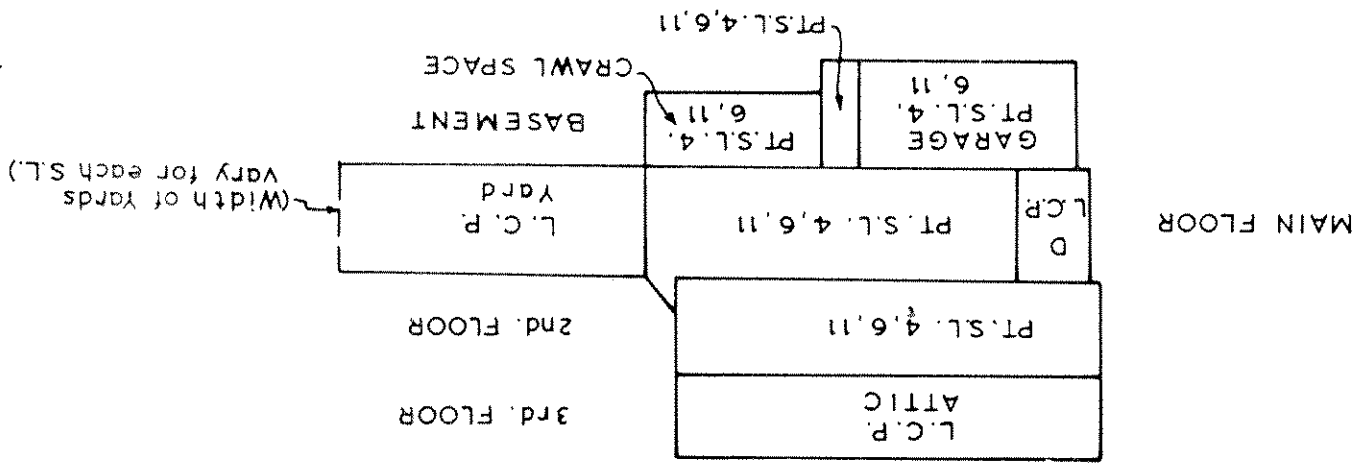
Typical for Buildings B, C & E

SCALE:- 1:200 m.

SECTION 'C-C'

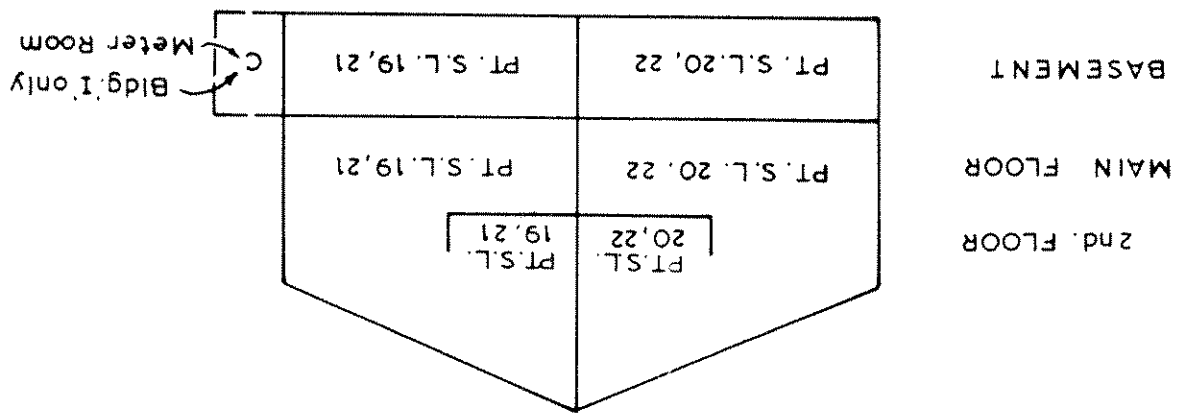


SECTION 'D-D'

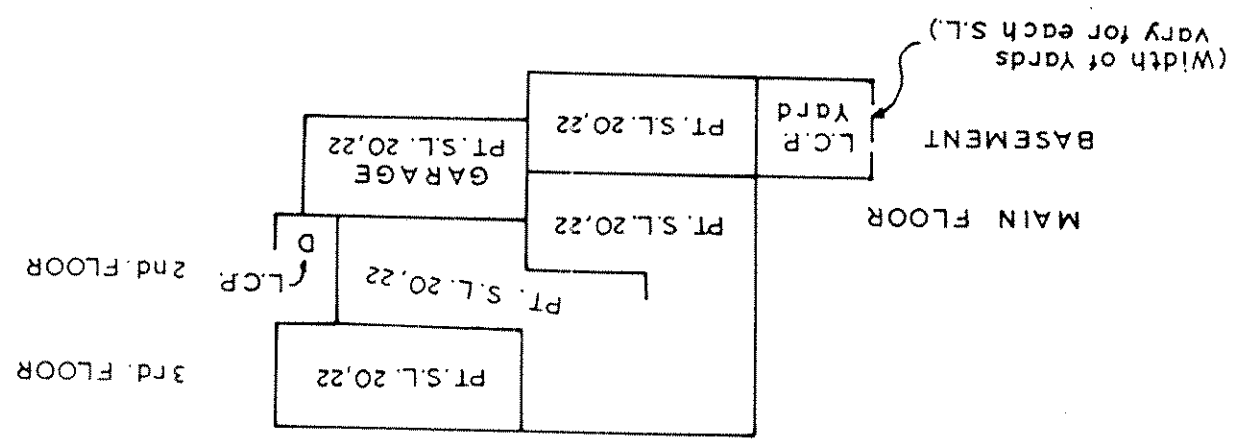


Drawn
January 7th, 1988
S-4539.3

January 7th, 1988
B. G.



SECTION 'F'-'F'



SECTION 'E'-'E'

SCALE: 1:200 m.

Typical for Buildings 'H' & 'I'

SECTIONS

PHASE 1

V.R. 2083
STRATA PLAN

