

BC OnLine



BC OnLine Land Title Internet Service
Provided in co-operation with
Land Title and Survey Authority

LAND TITLE AND SURVEY AUTHORITY - DOCUMENT RETRIEVAL		WEB REQUEST	
CLIENT NAME:	DYE & DURHAM COMPANY INC.		
ADDRESS:	10-620 ROYAL AVENUE NEW WESTMINSTER BC V3M 5Y4		
PICK-UP INSTRUCTIONS:			
USER ID:	[REDACTED]	APPLICATION NO. :	VAS2097 VA PAGES: 061
ACCOUNT NO.:	[REDACTED]	REQUESTED AT:	05-04-27 15:36
REFERENCE NO. :	Q21154	FOLIO NO. :	
REMARKS:			

BC OnLine Land Title Fax Service

Help Desk Victoria (250) 953-8200
In B.C. 1-800-663-6102
Administration Office ... (250) 953-8250
Fax Number (250) 953-8222

Persons who need to rely on a plan for legal purposes must examine the official version at the Land Title Office in which the plan is deposited.

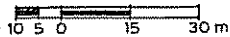
The bylaw and common property sheets attached to strata plans have been repealed. Information regarding the bylaws and/or dealings affecting the common property of strata plans must be obtained from the general index and/or common property index on ALTOS. Refer to the BC OnLine user guide for access information.

PHASE 1
STRATA PLAN OF PART OF
LOT 'B', D.L. 4751,
PLAN 21219

STRATA PLAN V.R. 2097

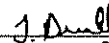
Strata Plan VR 2097 deposited and registered in the Land Title Office at Vancouver B.C. this 23 day of FEBRUARY 1988

RESORT MUNICIPALITY OF WHISTLER

Scale: 1:1000 m. 

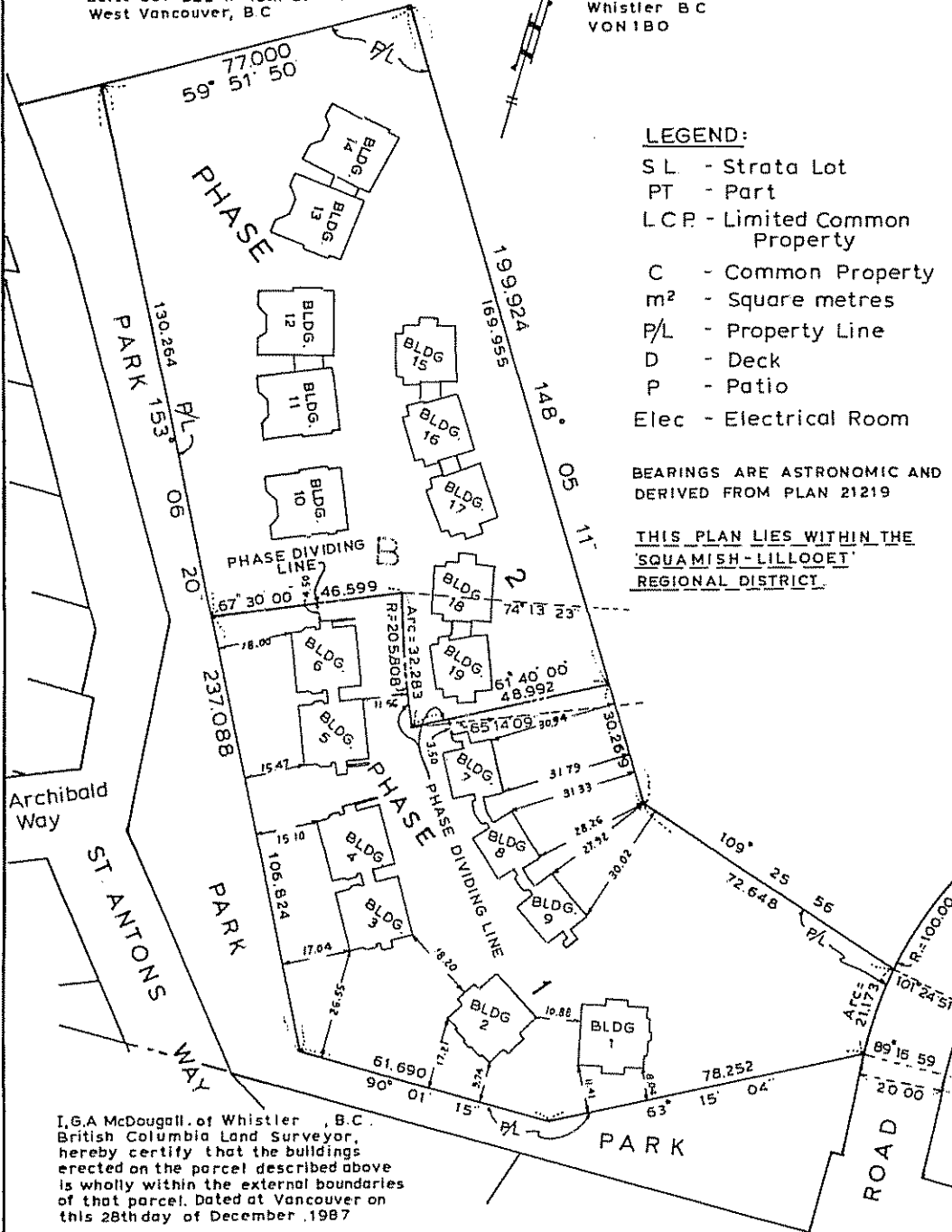
The Address for the Service of Documents on the Strata Corporation is:
The Owners' Strata Plan No. V.R. 2097

c/o BLUEBERRY HILL DEVELOPMENT CORP.
Suite 201-585 W. 16th Street,
West Vancouver, B.C.


DEPUTY Registrar

GB17512

Civic Address is:-
3102 to 3148 St Moritz Crescent,
Whistler B.C.
VON1B0



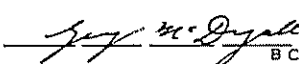
LEGEND:

- S.L. - Strata Lot
- PT - Part
- L.C.P. - Limited Common Property
- C - Common Property
- m² - Square metres
- P/L - Property Line
- D - Deck
- P - Patio
- Elec - Electrical Room

BEARINGS ARE ASTRONOMIC AND DERIVED FROM PLAN 21219

THIS PLAN LIES WITHIN THE 'SQUAMISH-LILLOUET' REGIONAL DISTRICT.

I, G.A. McDougall, of Whistler, B.C.,
British Columbia Land Surveyor,
hereby certify that the buildings
erected on the parcel described above
is wholly within the external boundaries
of that parcel. Dated at Vancouver on
this 28th day of December, 1987


B.C.L.S.

HERMON, BUNBURY & OKE,
PROFESSIONAL LAND SURVEYORS,
VANCOUVER & WHISTLER, B.C.

PHASE 1
CONDOMINIUM ACT.

LOT NO	SHEET NO	FORM 1 Schedule Of Unit Entitlement	FORM 2 Schedule Of Interest Upon Destruction	FORM 3 Schedule Of Voting Rights
			sheet 2	
		see second sheet.		

CERTIFICATE OF APPROVAL - B.C. Reg. 74/78

Approved as Phase 1 of a 2 Phase Strata Plan under the Condominium Act Dated this 7th day of February, 1988

[Signature]
Municipal Approving Officer for Resort Municipality of Whistler

STATUTORY DECLARATION:-

- I/WE, the undersigned, do solemnly declare that:-
- 1 I/WE (am/are) the Owner - Developer - or the duly authorized Agent of the Owner - Developer
 - 2 The Strata Plan is entirely for residential use
 - 3 I/WE make this solemn declaration conscientiously believing it to be true and knowing that it is of the same force and effect as if made under Oath

Declared before me at Vancouver in the Province of British Columbia, this 8th day of January, A.D. 1988

[Signature]
A Notary Public in and for the Province of British Columbia

Accepted as to Forms 1, 2 and 3 on the 8th day of February, 1988

[Signature]
Superintendent of Real Estate

FORM 10
CERTIFICATE OF APPROVAL
(Section 8(2), Section 9(5))

I hereby certify that the buildings situated on Lot B, D.L. 4751, Plan 21219 have been approved for strata plan development, this 12th day of February 1988

[Signature]
Approving Officer, Resort Municipality of Whistler
Endorsement pursuant to Section 84:

I hereby certify that the facility for parking spaces which according to Form E to the Act was to have been constructed in conjunction with this phase has been satisfactorily provided for this 12th day of February 1988

[Signature]
Approving Officer, Resort Municipality of Whistler

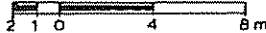
[Signature]
- Certificate under Section 8(1)
I, G.A. McDougall, British Columbia Land Surveyor, hereby certify that the building shown in this Strata Plan has not, as of the 28th day of December, 1987 been previously occupied
Dated at Whistler, British Columbia, this 28th day of December, 1987

[Signature]
B.C.L.S.

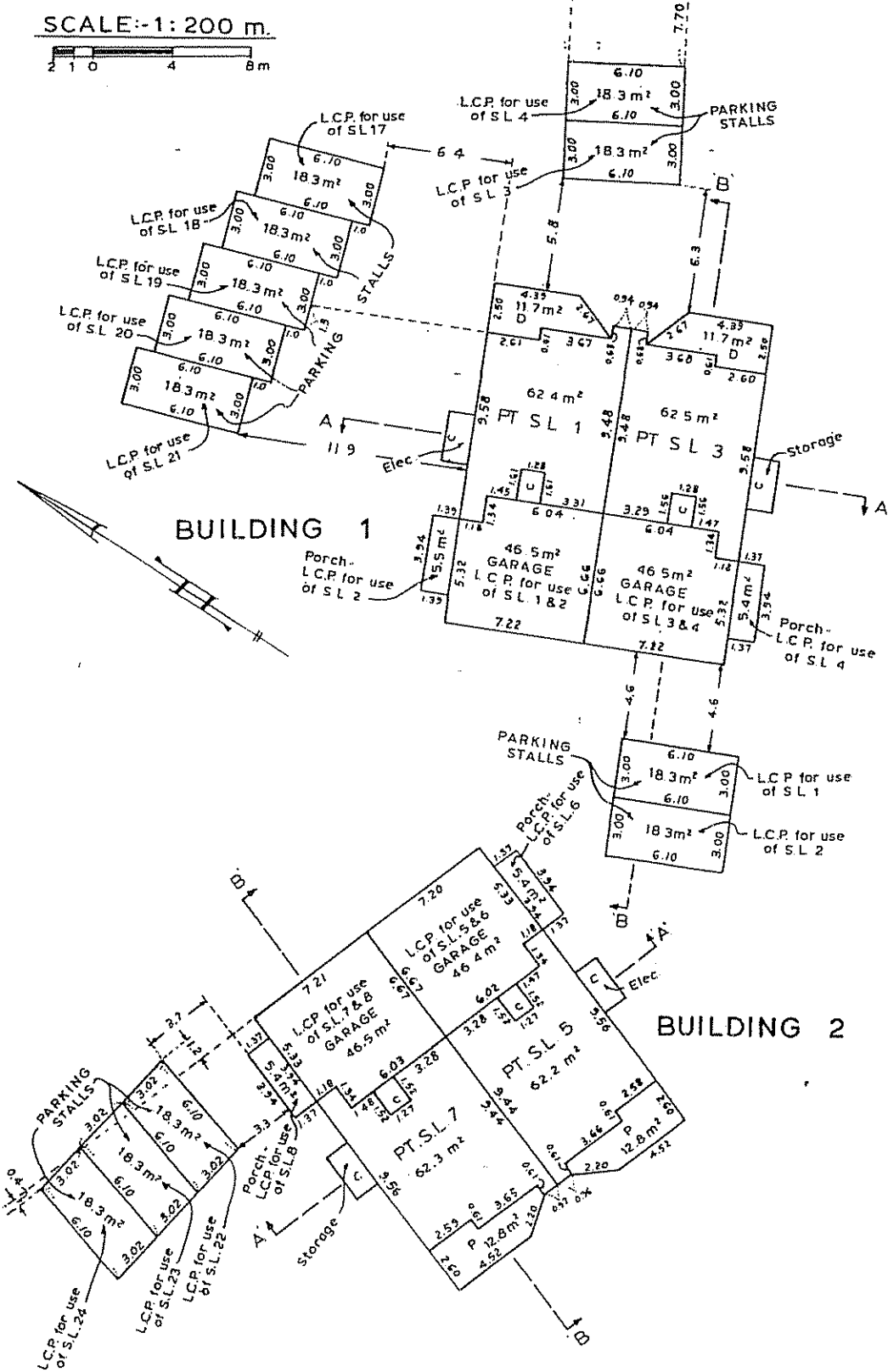
Mortgagee	Owner - Developer
'BANK OF MONTREAL'	'BLUEBERRY HILL DEVELOPMENT CORP.'
<i>[Signature]</i> Authorized Signatory	<i>[Signature]</i> Authorized Signatory
<i>[Signature]</i> Authorized Signatory	
<p>FOR THE MORTGAGEE AND AUTHORIZED SIGNATORY PLAN 44450 WITNESS AS TO BOTH SIGNATURES</p> <p><i>[Signature]</i> Authorized Signatory</p> <p>1700 B. WEST 47TH AVENUE VANCOUVER, B.C. V6Z-1A1</p>	

December 28th, 1987

PHASE 1
GROUND FLOOR

SCALE:-1:200 m.


Sheet 4 of 28 Sheets
STRATA PLAN
V.R. 2097



PATIOS AND DECKS ARE L.C.P. FOR USE OF THE ABUTTING S L

Dec. 28th 1987

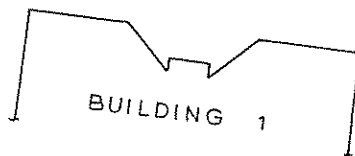
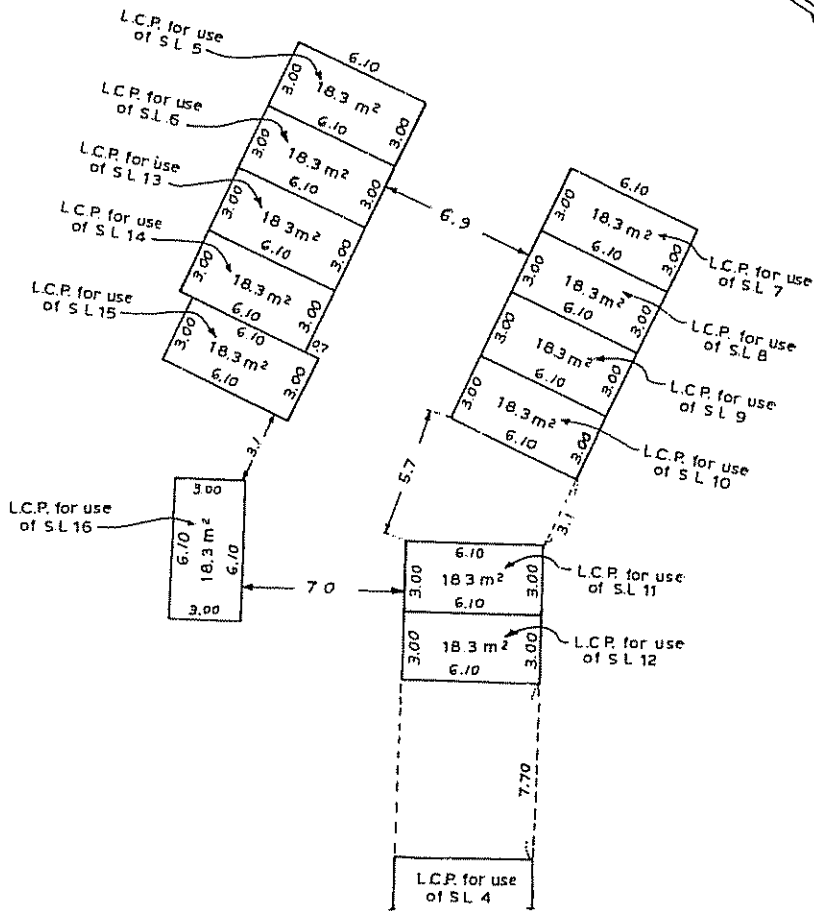
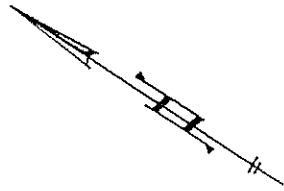
S-4536. ©

ID:566-1112

PHASE 1

GROUND LEVEL PARKING STALLS

SCALE:- 1 : 200 m.

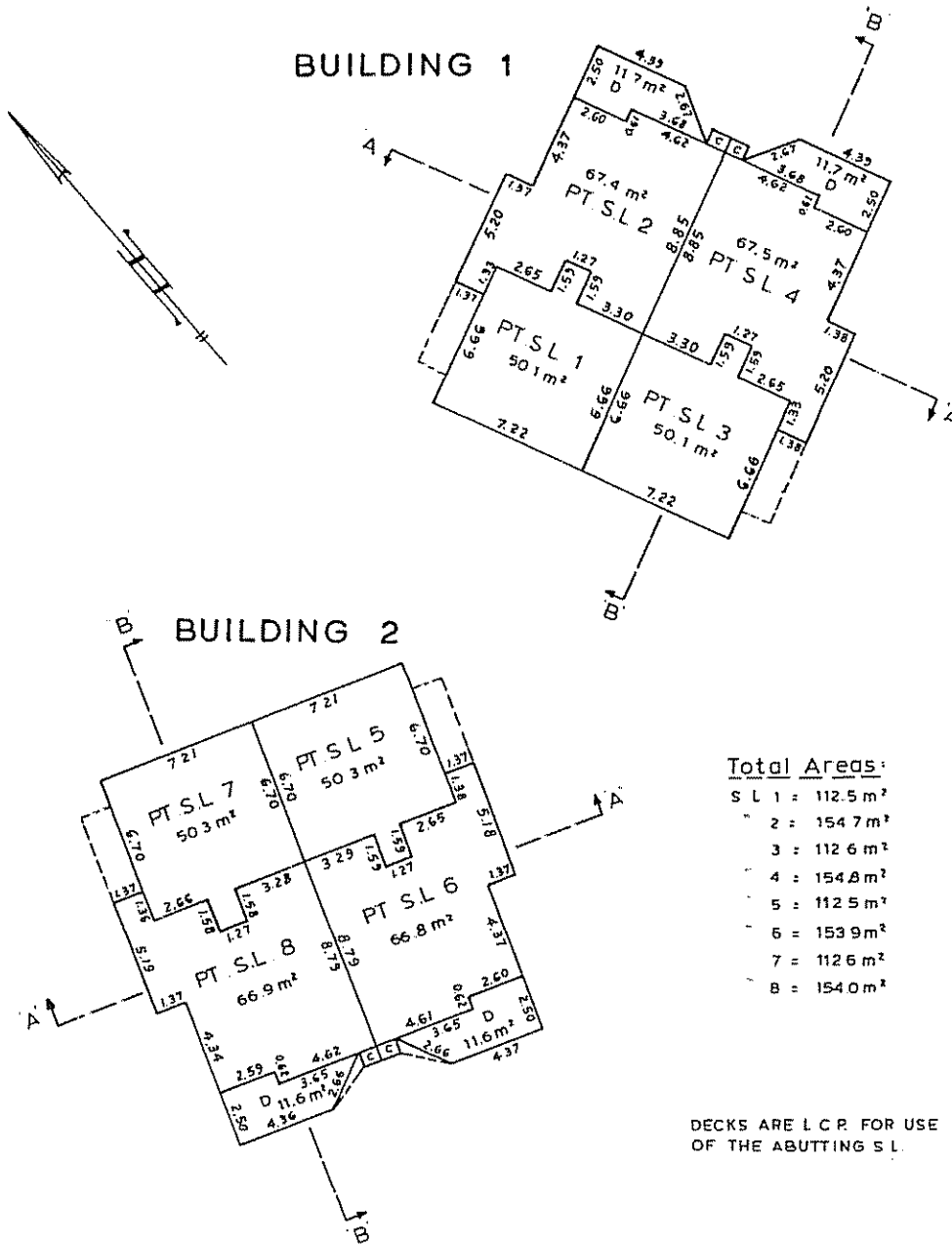


STRATA PLAN
V.R. 2097

PHASE 1

SECOND FLOOR

SCALE: 1:200 m.



Total Areas:

- S L 1 = 112.5 m²
- 2 = 154.7 m²
- 3 = 112.6 m²
- 4 = 154.8 m²
- 5 = 112.5 m²
- 6 = 153.9 m²
- 7 = 112.6 m²
- 8 = 154.0 m²

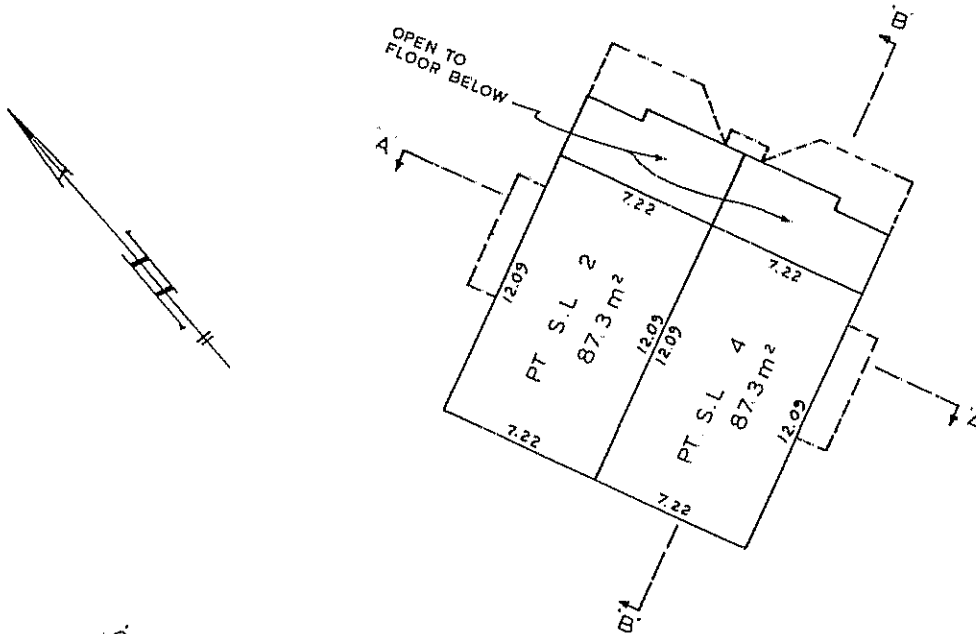
DECKS ARE I.C.P. FOR USE OF THE ABUTTING S.L.

PHASE 1

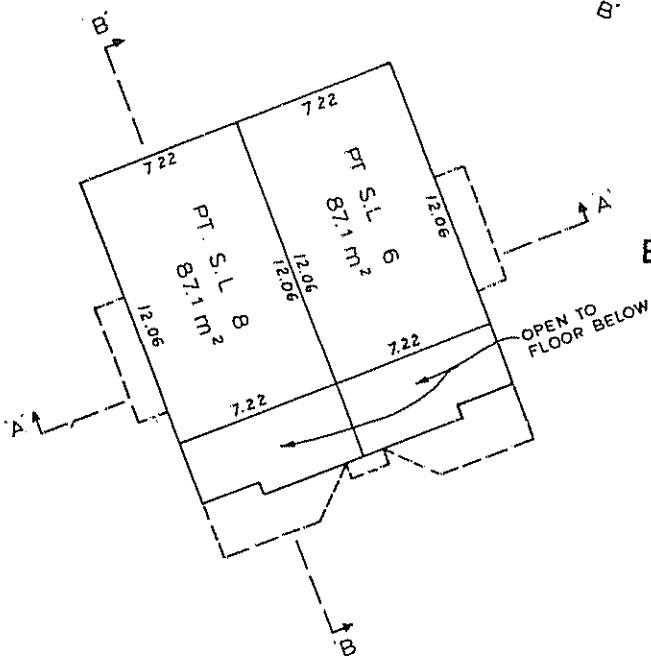
THIRD FLOOR

SCALE:- 1: 200 m.

BUILDING 1

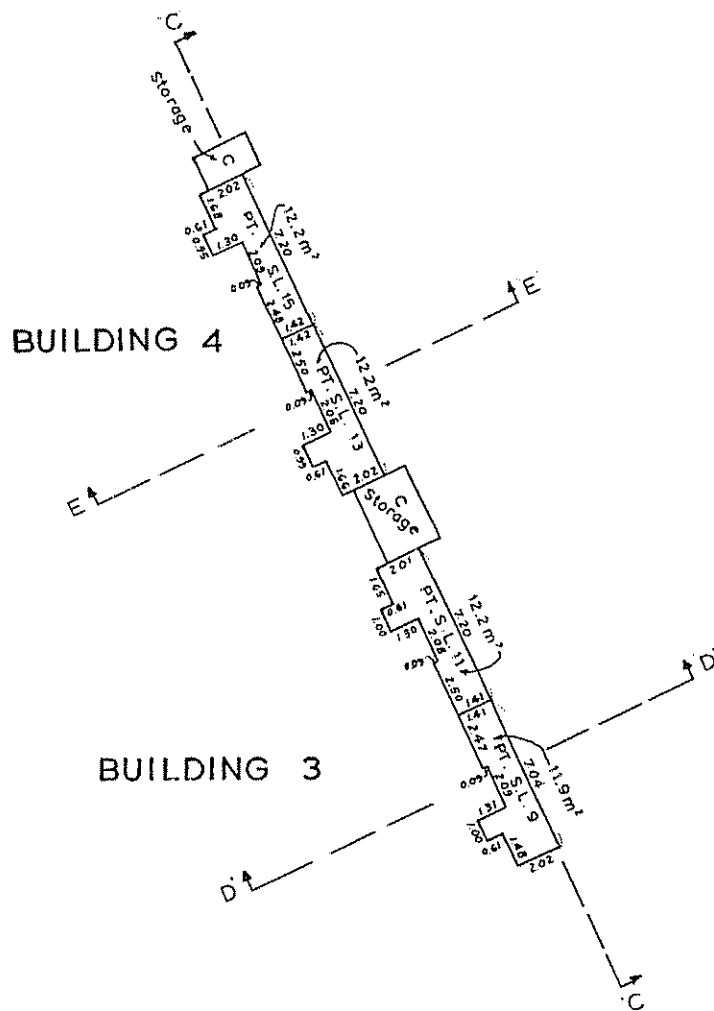


BUILDING 2



PHASE 1
CRAWL SPACE

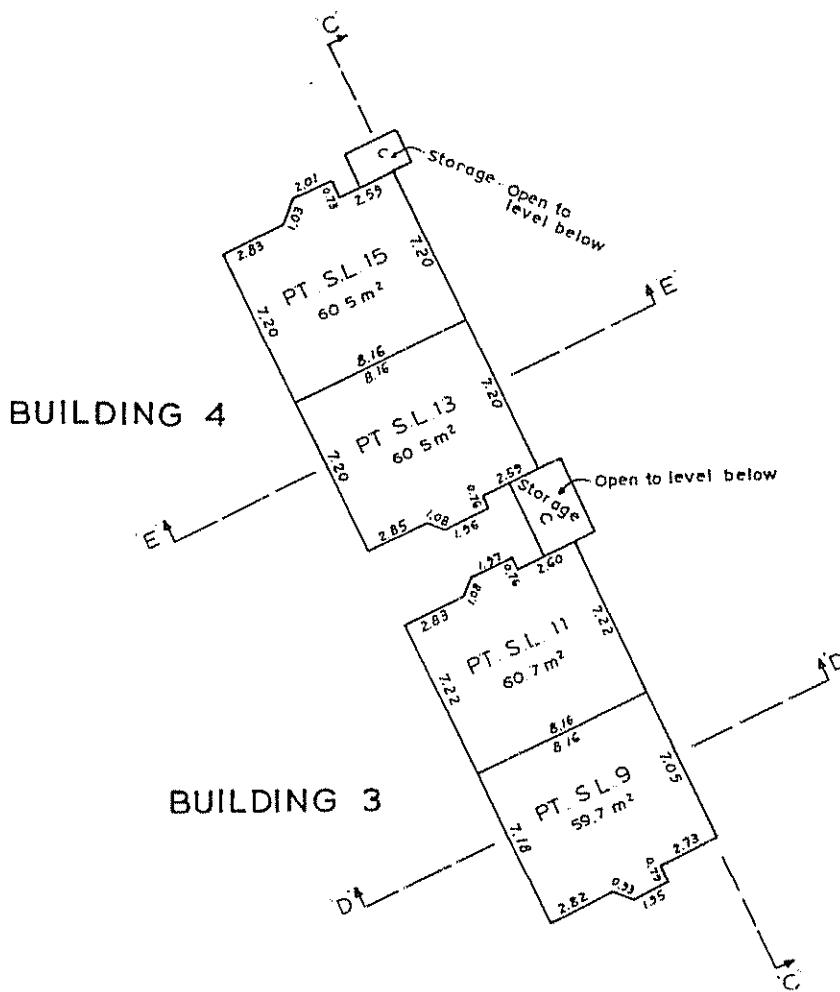
SCALE: 1:200 m.



STRATA PLAN
V.R. 2097

PHASE 1
FIRST FLOOR

SCALE: -1:200 m.



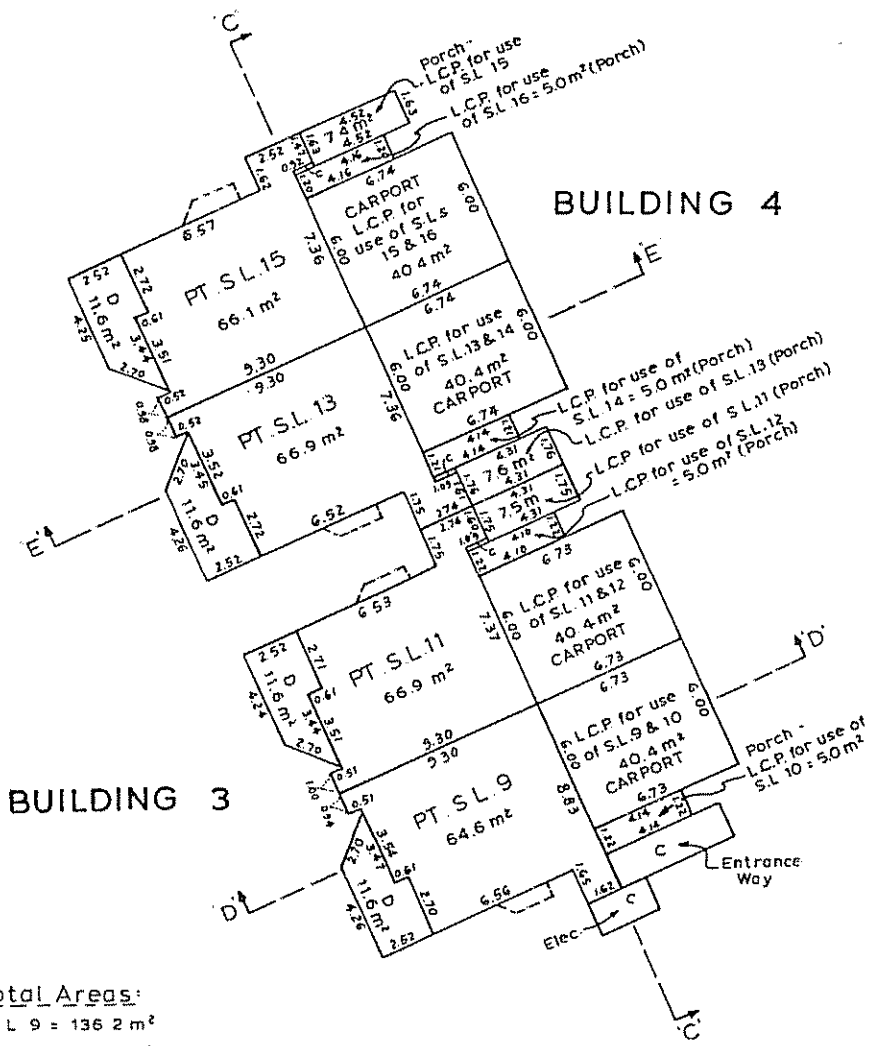
105401172

Dec 28th, 1987

S-4536-0

PHASE 1
SECOND FLOOR

SCALE: 1:200 m.



Total Areas:

S L 9 =	136.2 m ²
10 =	110.1 m ²
11 =	139.8 m ²
12 =	110.1 m ²
13 =	139.6 m ²
14 =	110.2 m ²
15 =	138.8 m ²
16 =	110.2 m ²

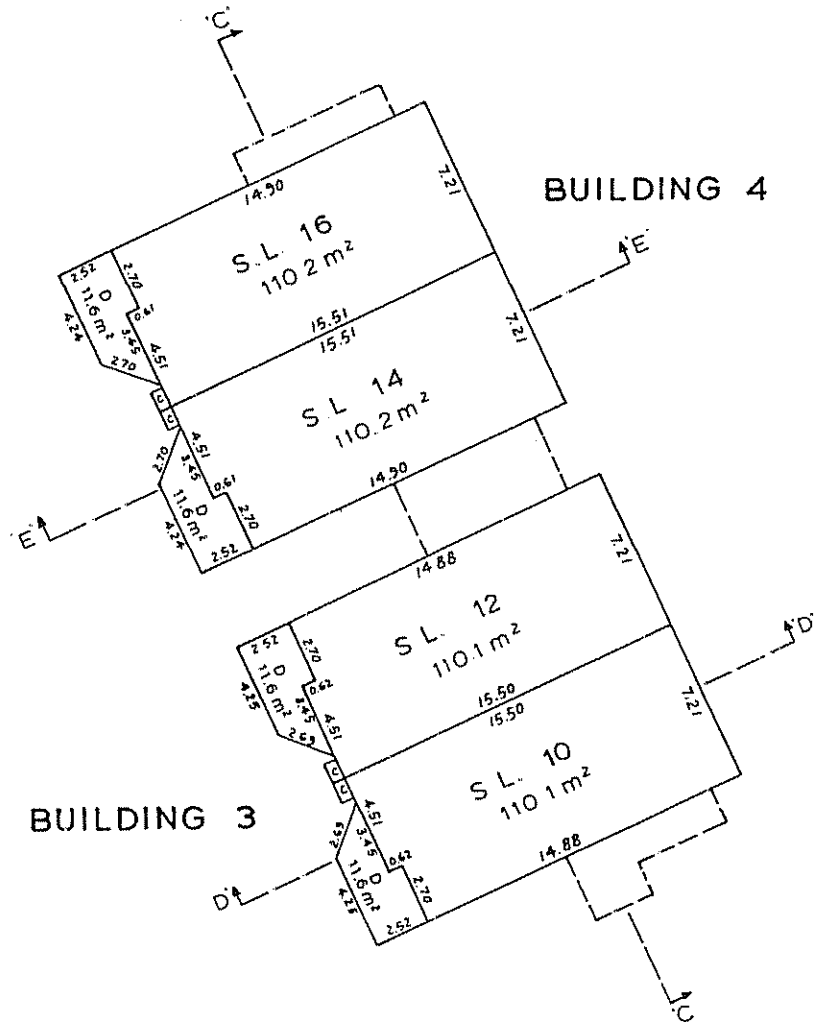
DECKS ARE L.C.P. FOR USE OF THE ABUTTING S L

Dec. 28th, 1987

10-506-117E

PHASE 1
THIRD FLOOR

SCALE: -1: 200 m.

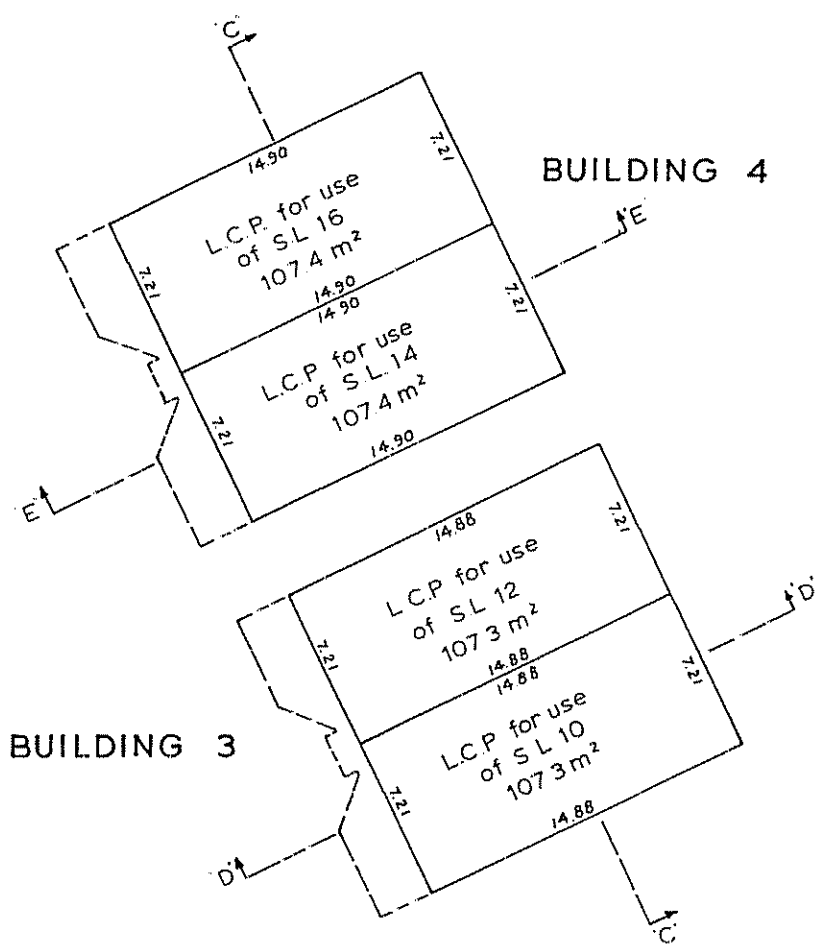


DECKS ARE L.C.P. FOR USE OF
THE ABUTTING S.L.

STRATA PLAN
V.R. 2097

PHASE 1
ATTIC

SCALE:-1:200 m.



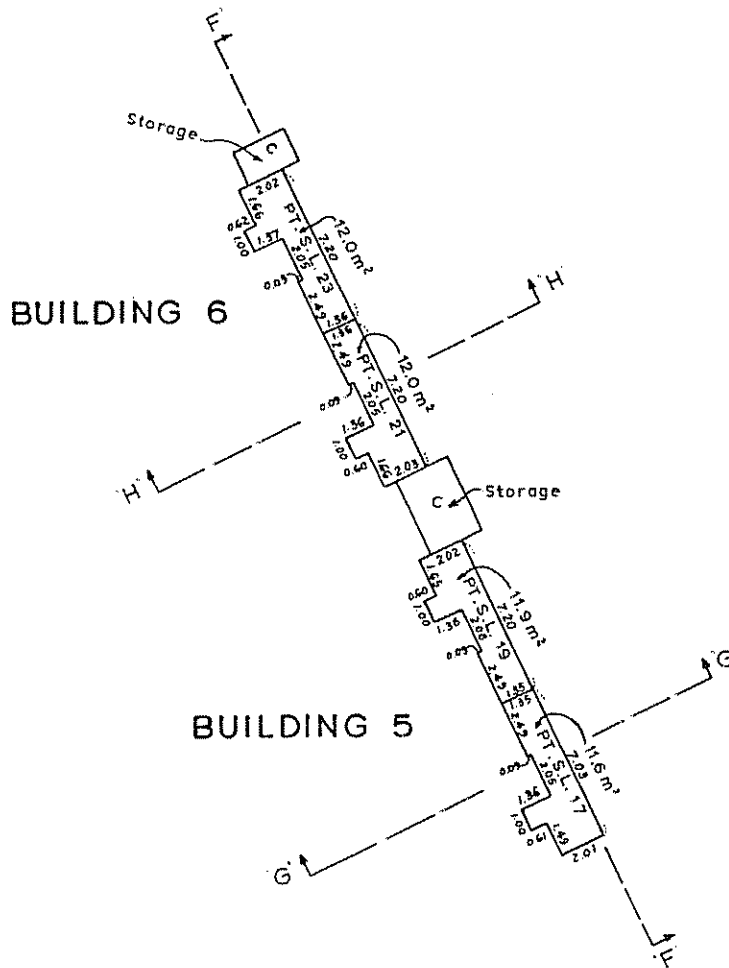
10-506-11/2

Dec 28th, 1987

PHASE 1

CRAWL SPACE

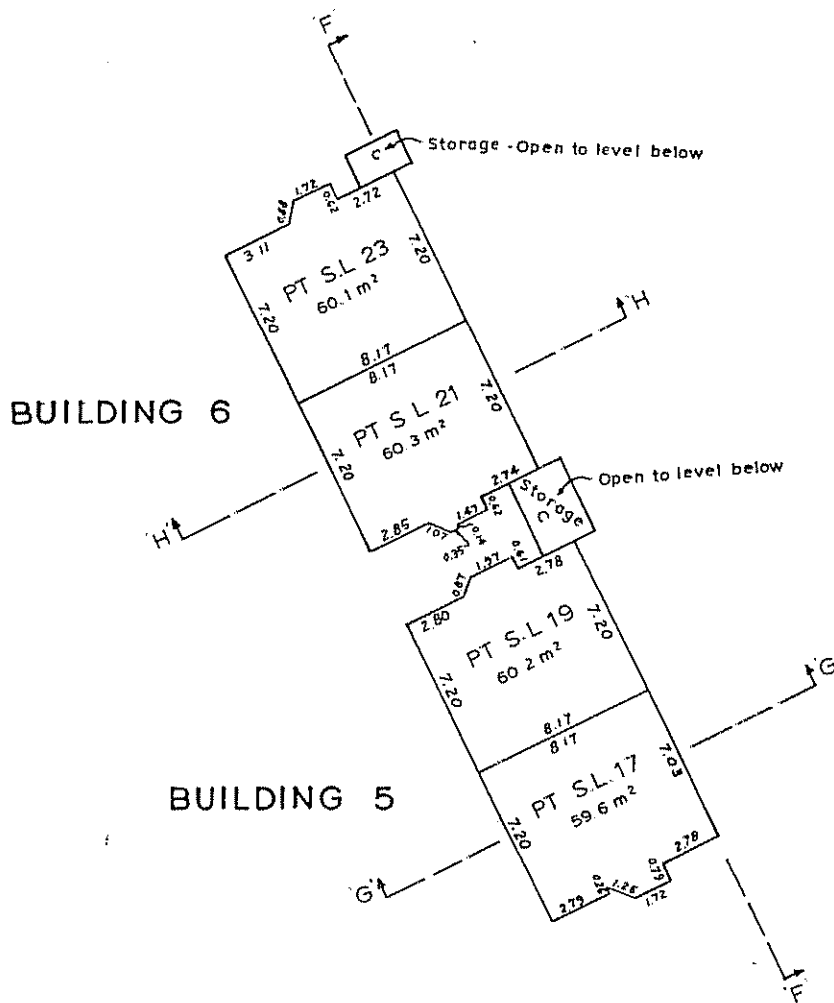
SCALE: 1:200 m.



PHASE 1

FIRST FLOOR

SCALE: 1:200 m.

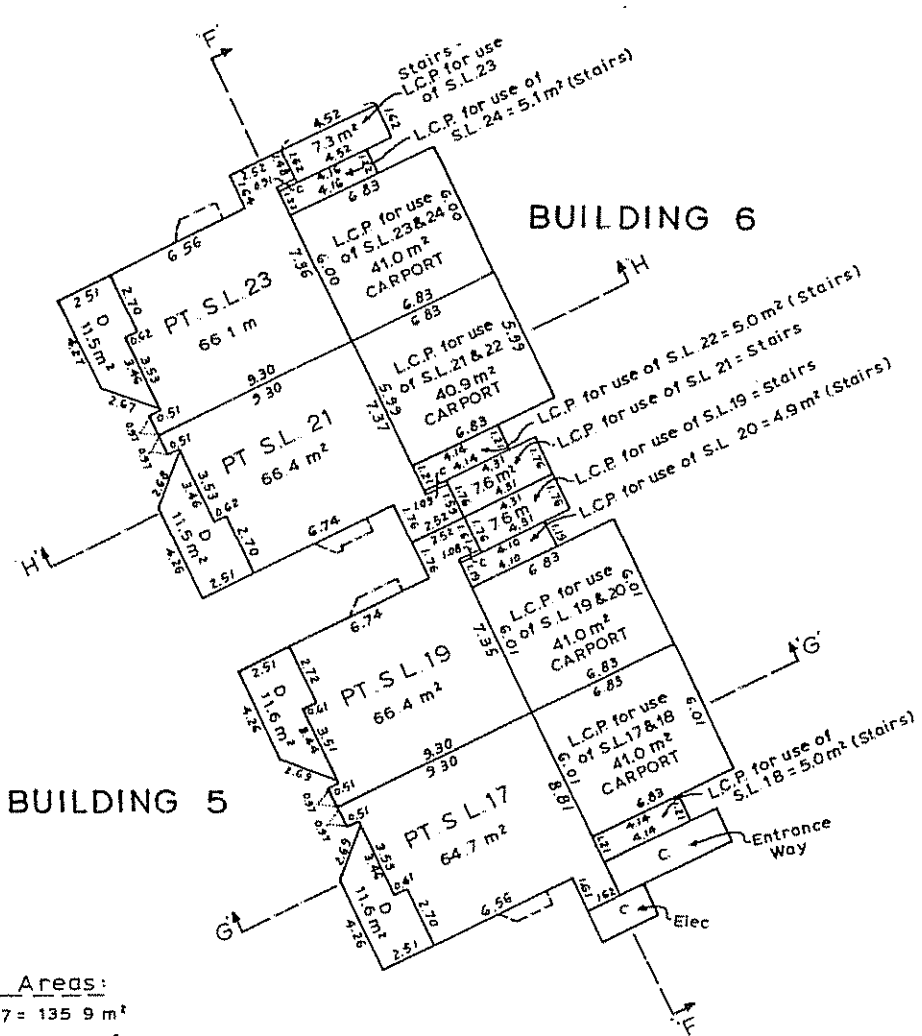


STRATA PLAN
V.R. 2097

PHASE 1

SECOND FLOOR

SCALE: -1 : 200 m.



- S L. 17 = 135.9 m²
- 18 = 110.9 m²
- 19 = 138.5 m²
- 20 = 110.9 m²
- 21 = 138.7 m²
- 22 = 110.9 m²
- 23 = 138.2 m²
- 24 = 110.9 m²

DECKS ARE L.C.P. FOR USE OF THE ABUTTING S L

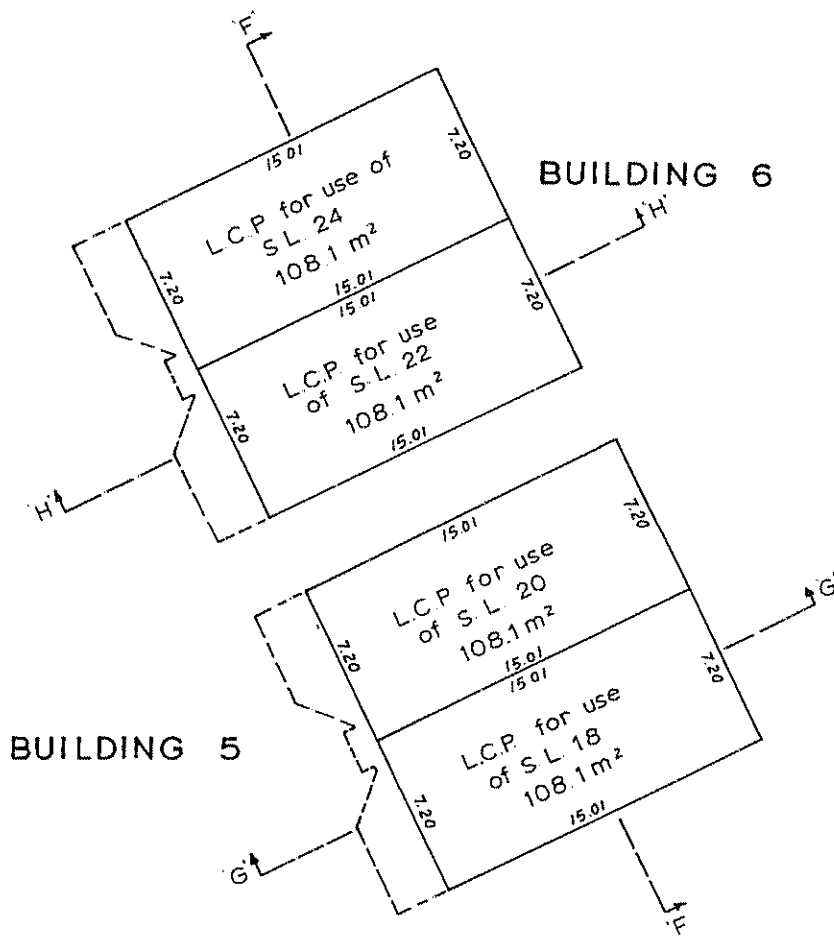
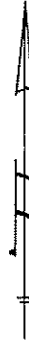
Dec. 28th, 1987

10-000-11/2

PHASE 1

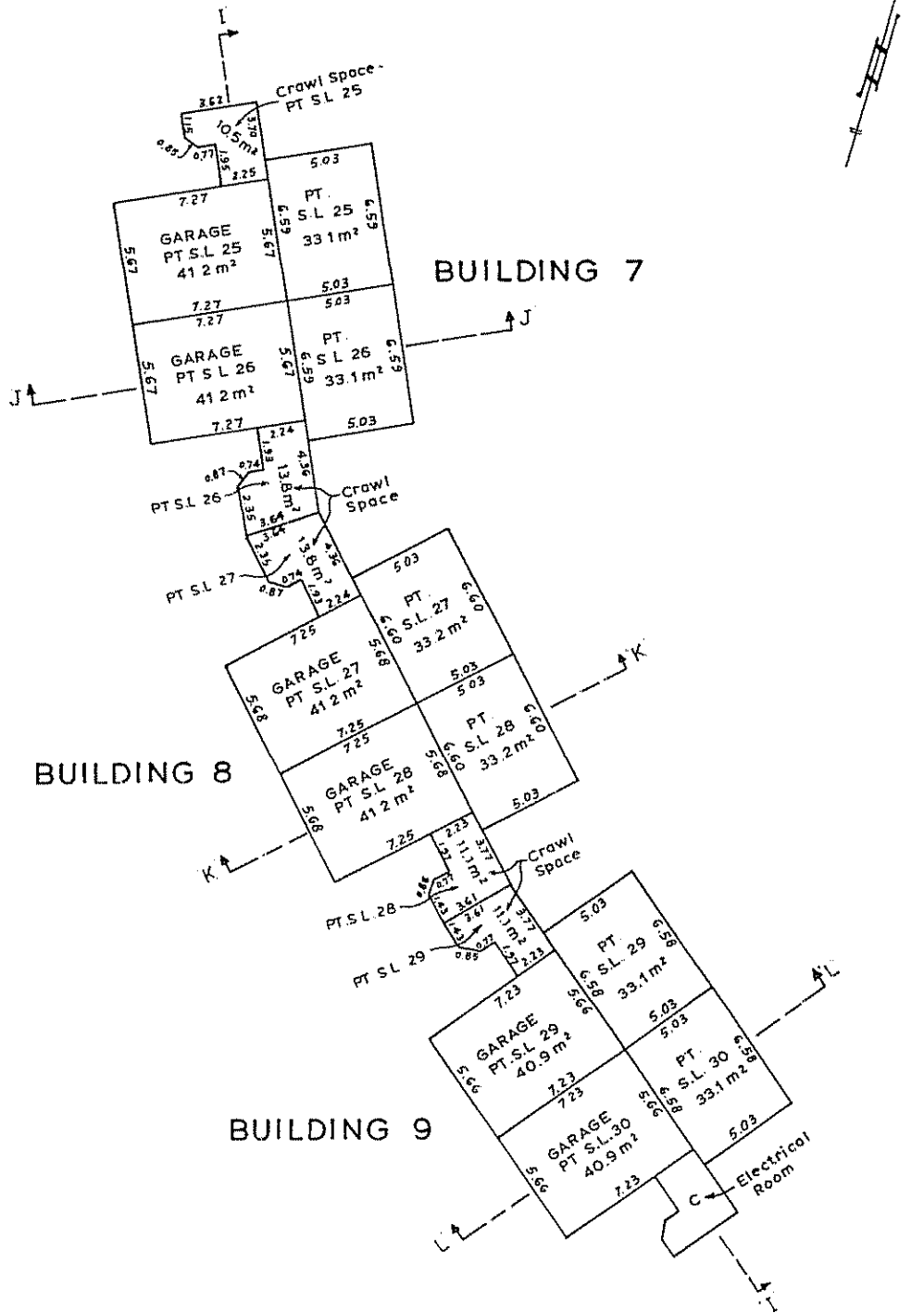
ATTIC

SCALE: 1:200 m.



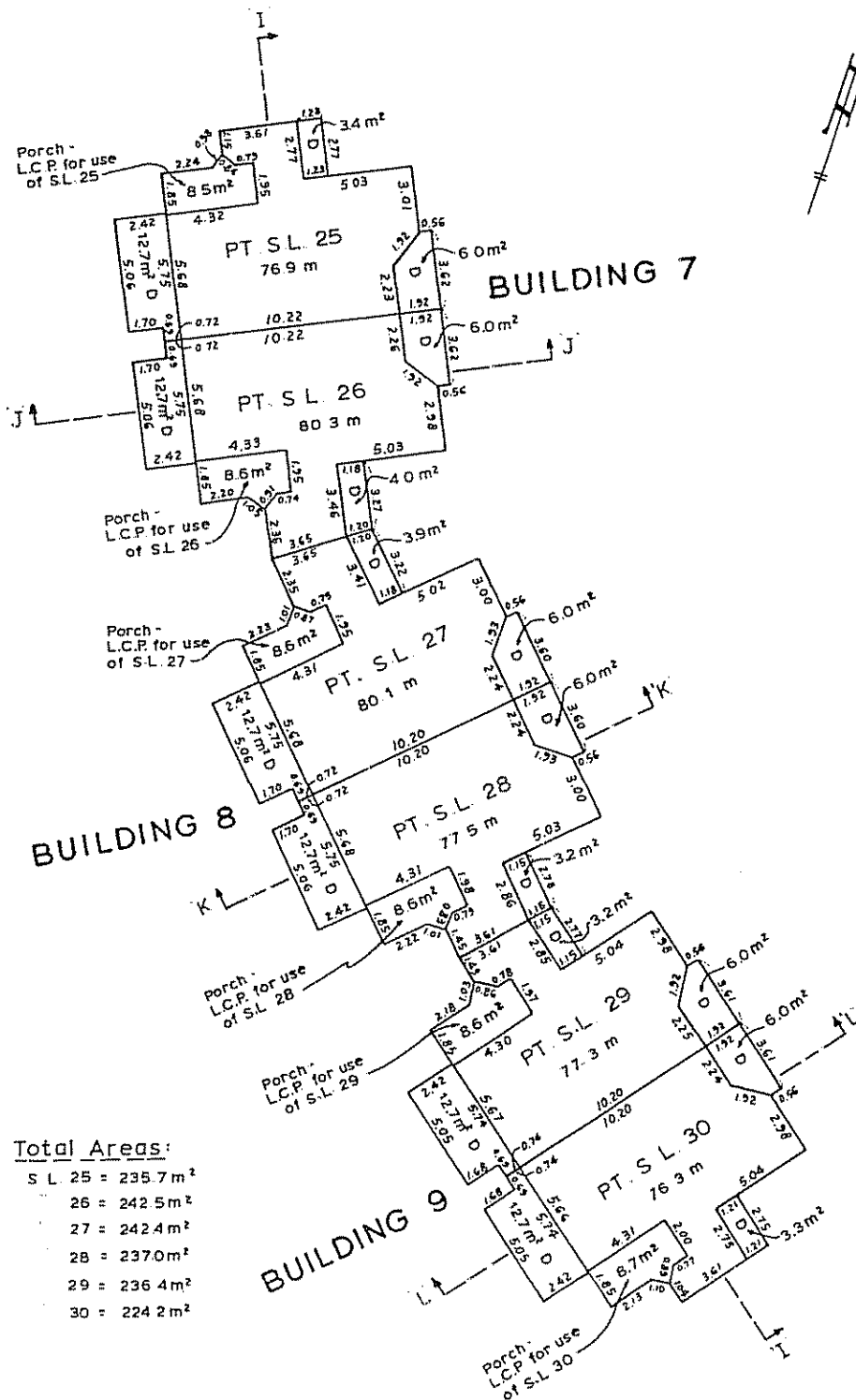
PHASE 1
GROUND FLOOR

SCALE: 1:200 m.



PHASE 1
SECOND FLOOR

SCALE:-1:200 m.



Total Areas:

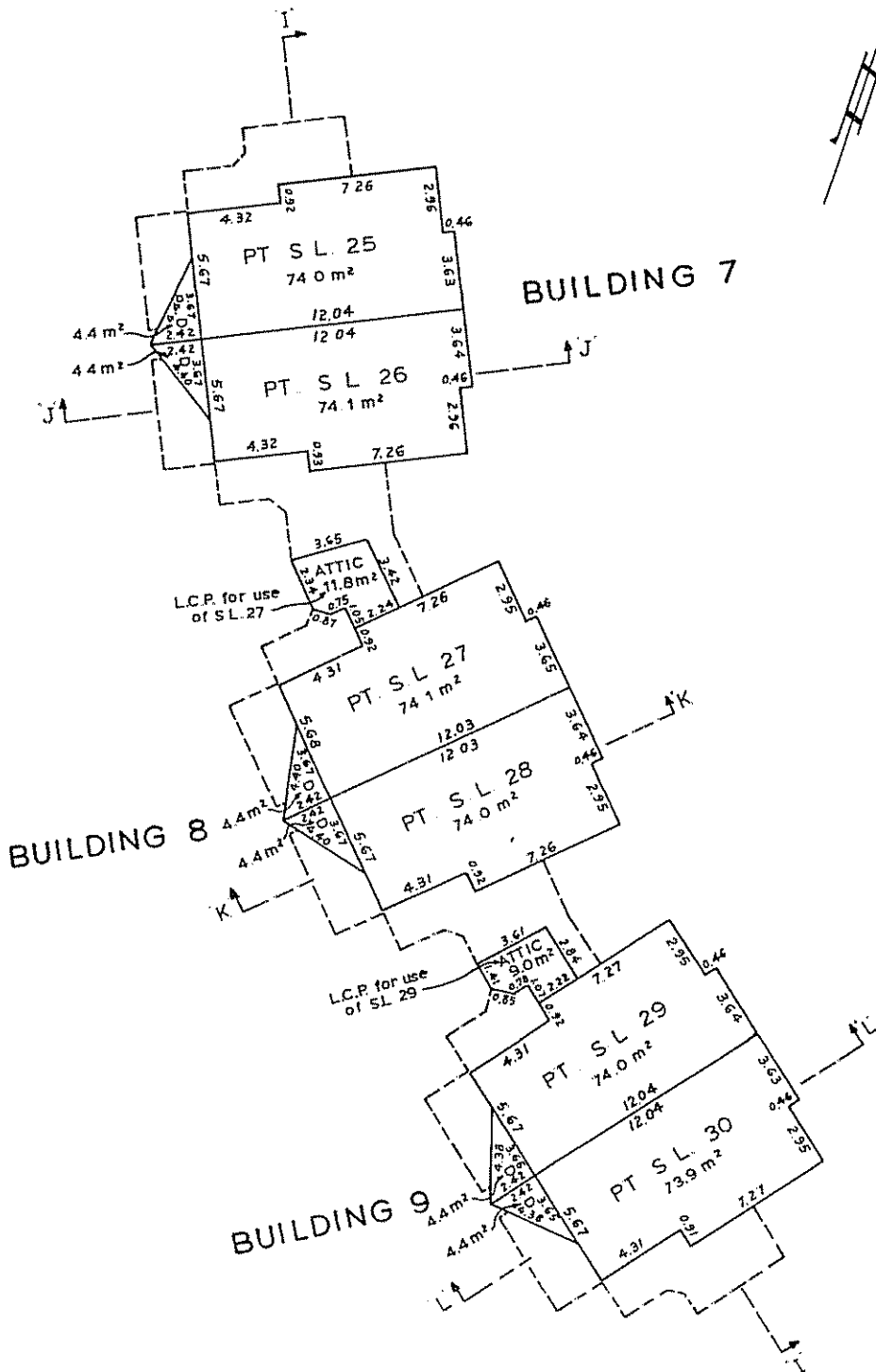
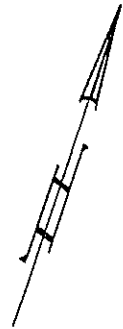
- S L. 25 = 235.7m²
- 26 = 242.5m²
- 27 = 242.4m²
- 28 = 237.0m²
- 29 = 236.4m²
- 30 = 224.2m²

ALL DECKS ARE L.C.P. FOR USE
OF THE ABUTTING S.L.

Dec. 28th, 1987.

PHASE 1
THIRD FLOOR

SCALE: 1:200 m.



ALL DECKS ARE L.C.P. FOR USE
OF THE ABUTTING S L

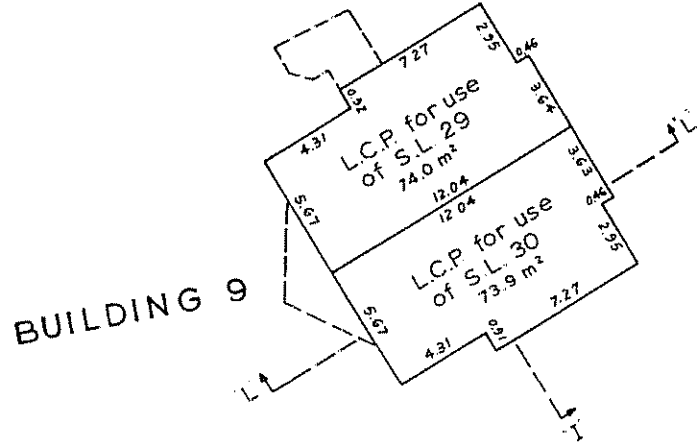
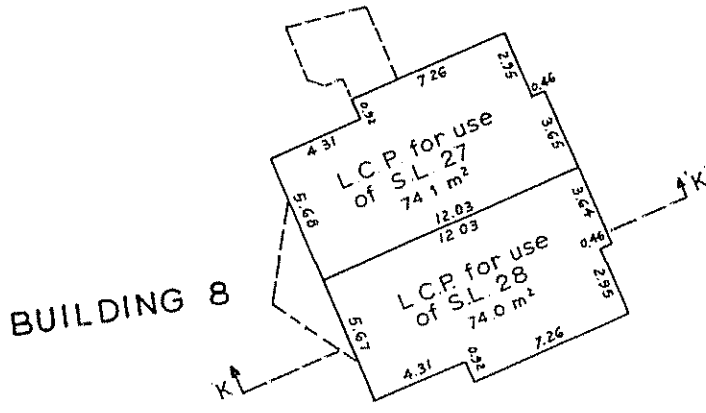
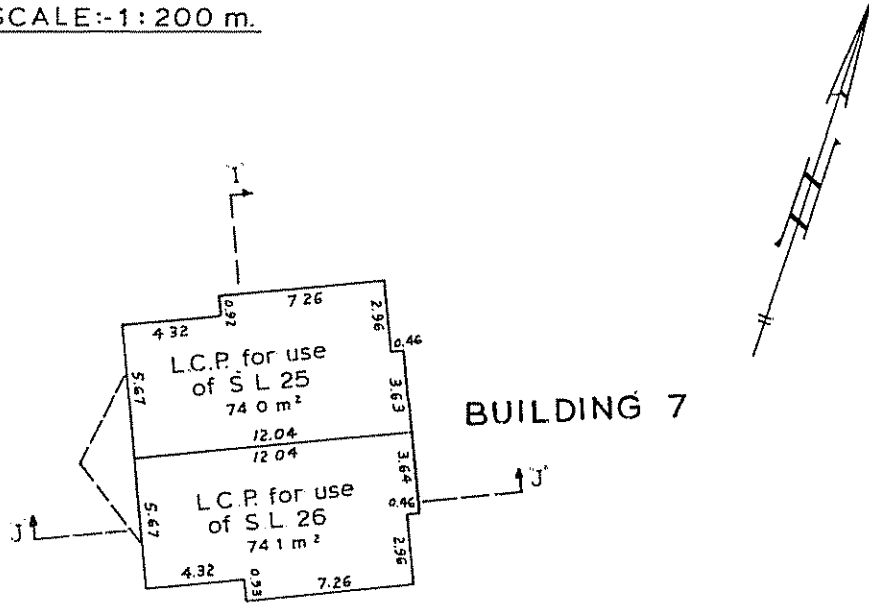
ID:506-1172

2209
Dec. 28th, 1987

PHASE 1

ATTIC

SCALE:-1:200 m.



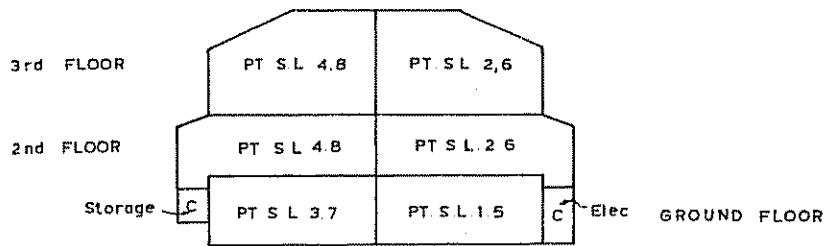
PHASE 1

SECTIONS :

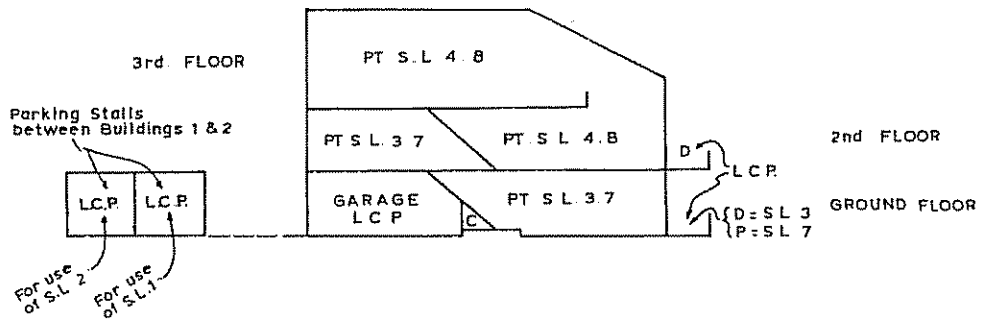
Typical for Buildings 1 & 2

SCALE:-1:200 m.

SECTION 'A' - 'A'



SECTION 'B' - 'B'



ID:608-11/2

Dec. 28th, 1987

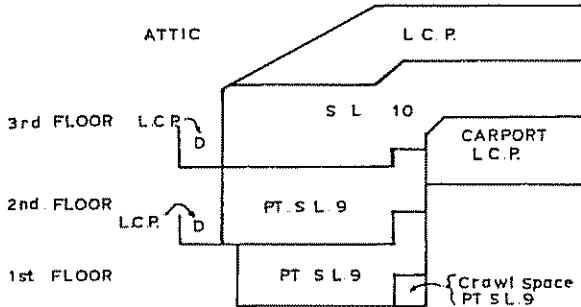
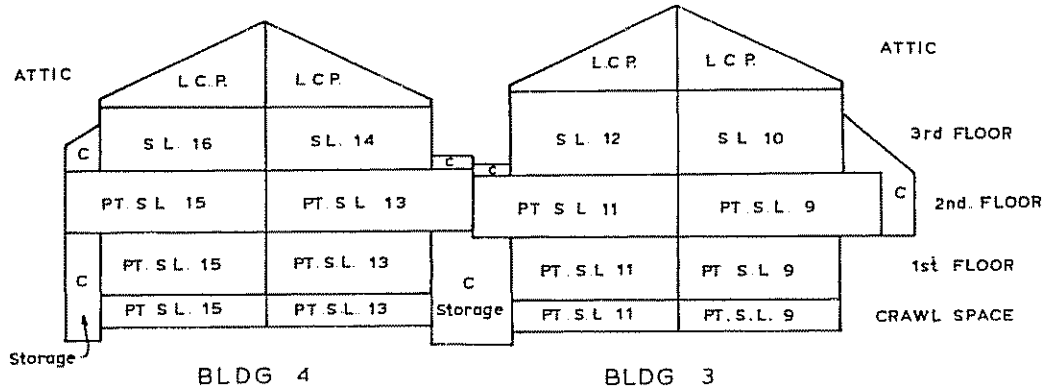
S-4536. ©

PHASE 1

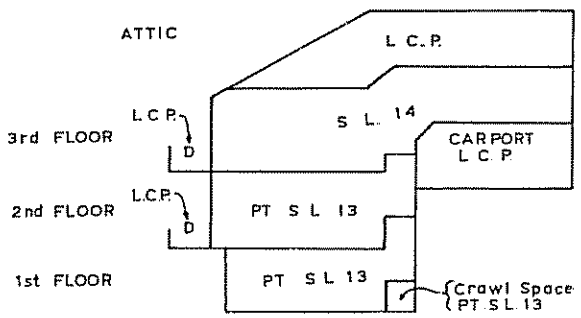
SECTIONS:

SCALE: 1:200 m.

SECTION 'C'-'C'



SECTION 'D'-D'
BLDG 3



SECTION 'E'-E'
BLDG 4

ID-008-11/2

Dec. 28th 1987

PHASE 1

SECTIONS:

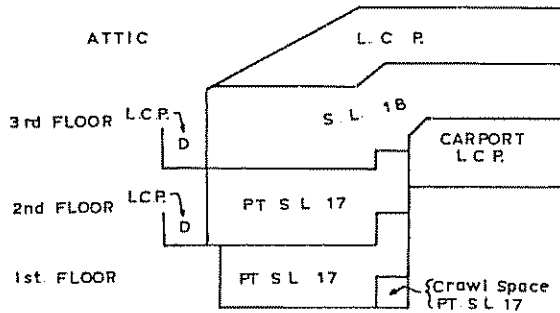
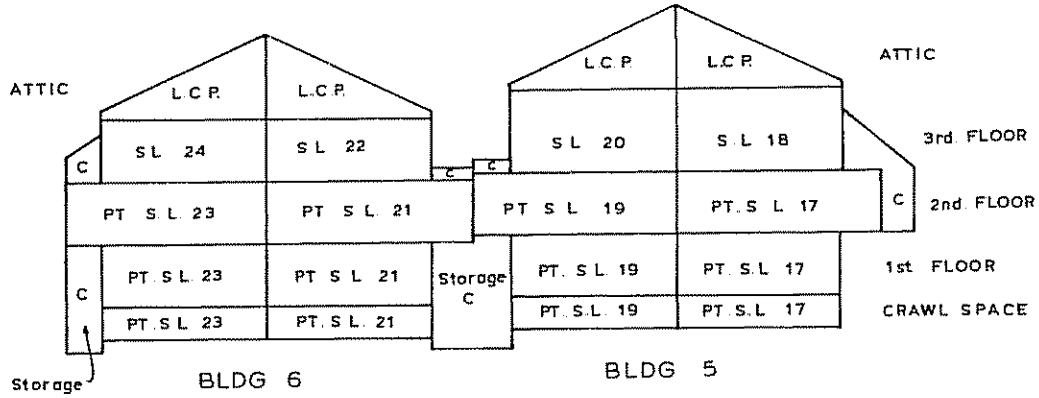
SCALE: 1:200 m.

Sheet 24 of 28 Sheets.

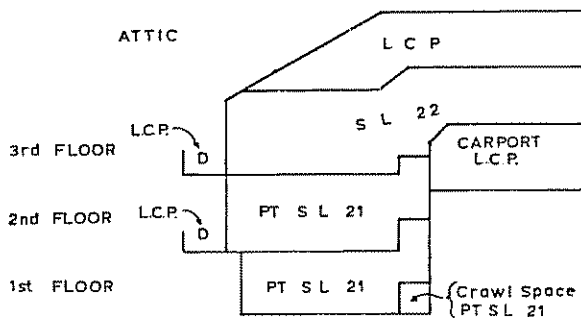
STRATA PLAN

V.R. 2097

SECTION 'F'-'F'



SECTION 'G'-'G'
BLDG 5



SECTION 'H'-'H'
BLDG 6

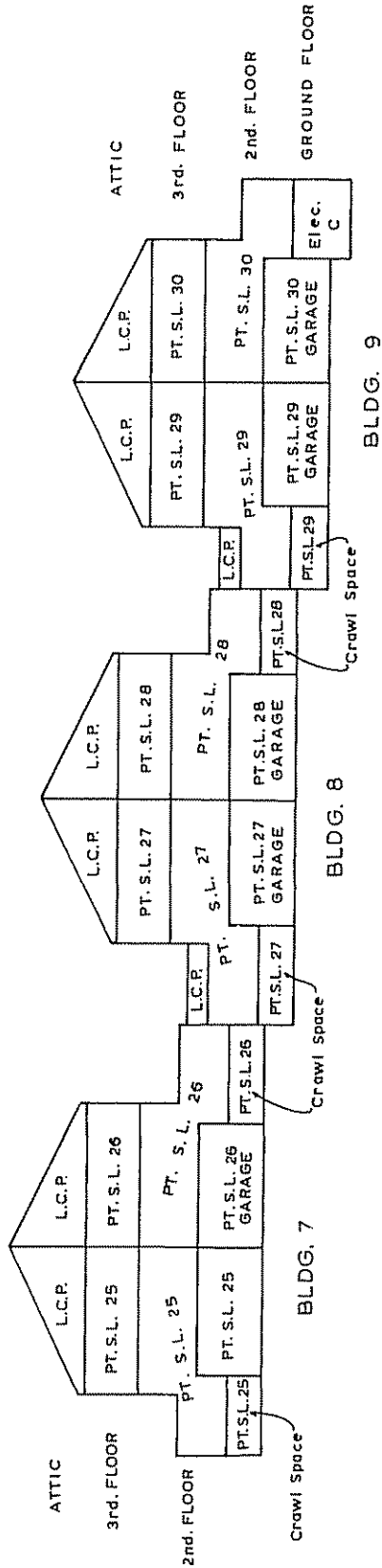
PHASE 1

SECTIONS:

SCALE: -1:200 m.

V.R. 2097

SECTION 'I-I'



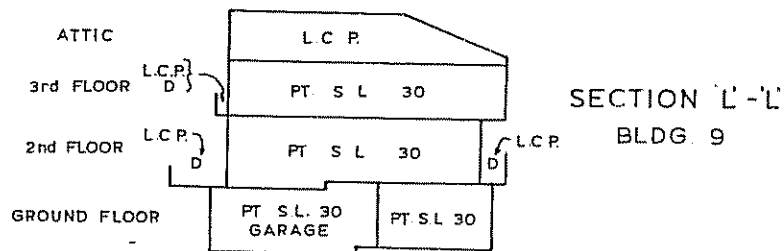
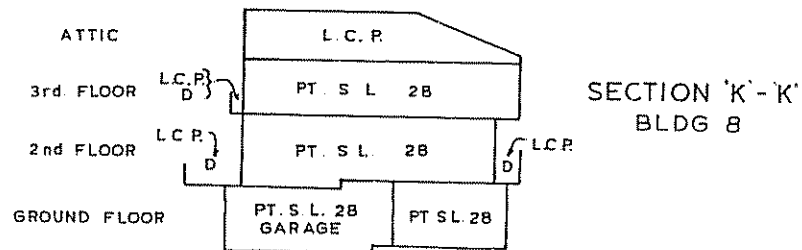
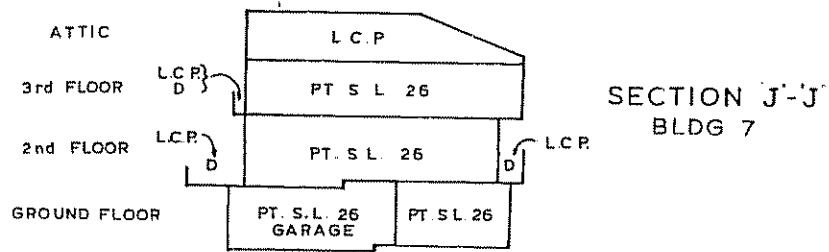
10-668-11/2

Dec. 28th, 1987

PHASE 1

SECTIONS :

SCALE: 1:200 m.



PHASE 2
STRATA PLAN OF PART OF

First Sheet - Sheet 1 of 32 Sheets

V.R. 2097

LOT B EXCEPT PART IN
PHASE I STRATA PLAN

VR 2097 DL 4751 PLAN 21219

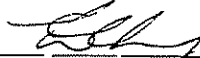
Strata Plan VR 2097 deposited and registered in the Land Title Office at Vancouver B.C. this 25th day of November, 1988

RESORT MUNICIPALITY OF WHISTLER

SCALE 1:1000 

The Address for the service of Documents on the 'Strata Corporation' is:
The Owners' Strata Plan No. V.R. 2097...

c/o SEA TO SKY PROPERTY MANAGEMENT
BOX 619
203 - 4309 SKIERS APPROACH,
WHISTLER, B.C.
VON 1B0


Assistant Deputy Registrar

4B 135842

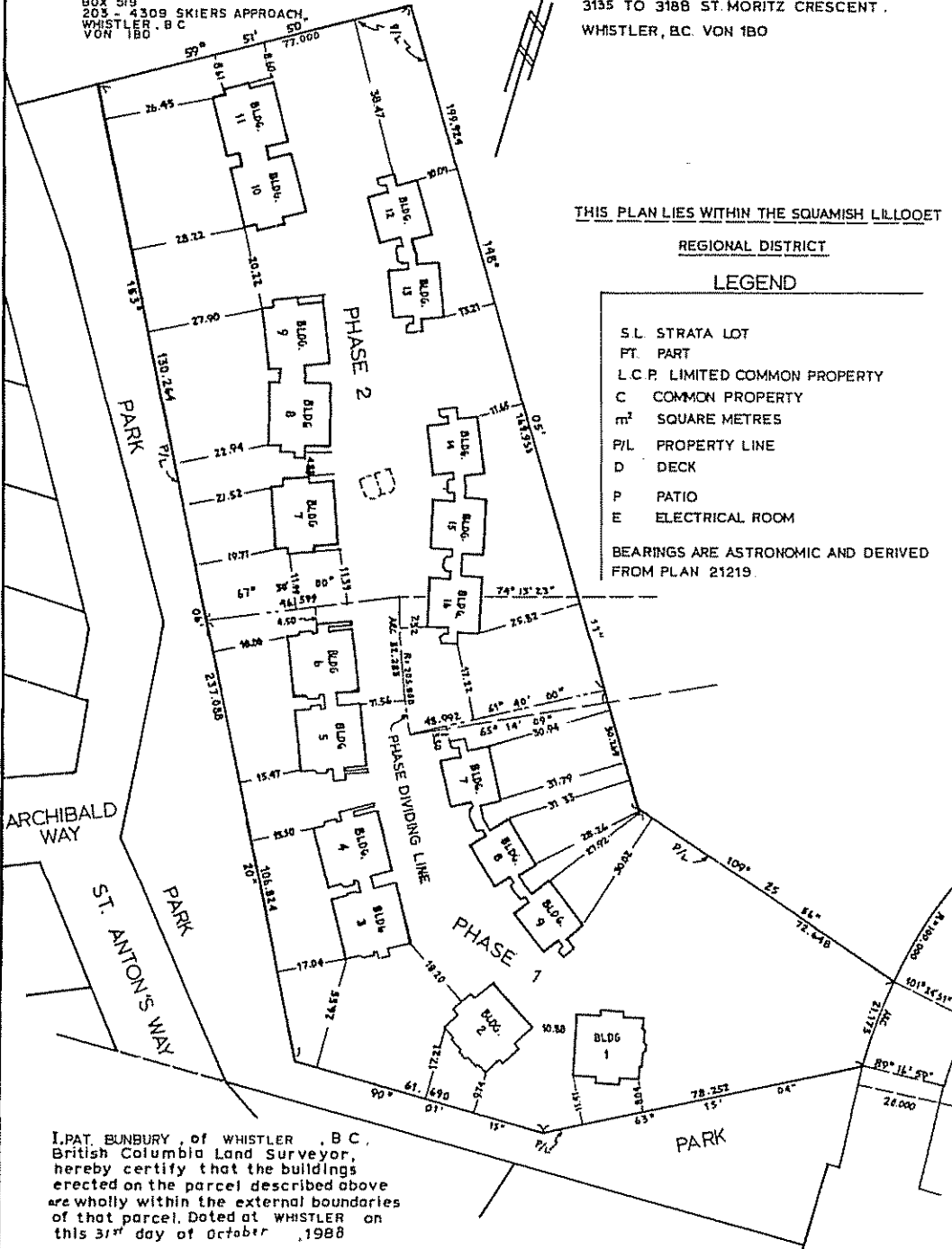
Civic Address is:-
3135 TO 3188 ST. MORITZ CRESCENT,
WHISTLER, B.C. VON 1B0

THIS PLAN LIES WITHIN THE SQUAMISH LILLOOET
REGIONAL DISTRICT

LEGEND

- S.L. STRATA LOT
- PT. PART
- L.C.P. LIMITED COMMON PROPERTY
- C. COMMON PROPERTY
- m² SQUARE METRES
- P/L PROPERTY LINE
- D. DECK
- P. PATIO
- E. ELECTRICAL ROOM

BEARINGS ARE ASTRONOMIC AND DERIVED FROM PLAN 21219.



I, PAT. BUNBURY, of WHISTLER, B.C., British Columbia Land Surveyor, hereby certify that the buildings erected on the parcel described above are wholly within the external boundaries of that parcel. Dated at WHISTLER on this 31st day of October, 1988

P.A.T. Bunbury
B.C.L.S.


HERMON, BUNBURY & OKE,
PROFESSIONAL LAND SURVEYORS,
VANCOUVER & WHISTLER, B.C.

PHASE 2
CONDOMINIUM ACT.

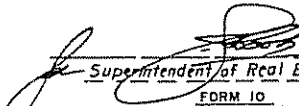
LOT NO	SHEET NO	FORM 1 Schedule Of Unit Entitlement	FORM 2 Schedule Of Interest Upon Destruction	FORM 3 Schedule Of Voting Rights

SEE SECOND SHEET - SHEET 2

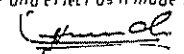
CERTIFICATE OF APPROVAL - B.C. REG 74/78
APPROVED AS PHASE 2 OF A 2 PHASE STRATA
PLAN UNDER THE CONDOMINIUM ACT.
DATED THIS 9 DAY OF NOV 1988


MUNICIPAL APPROVING OFFICER FOR
RESORT MUNICIPALITY OF WHISTLER

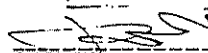
Accepted as to Forms 1, 2 and 3
on the 24 day of NOVEMBER 1988

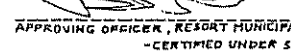

Superintendent of Real Estate
FORM 10
CERTIFICATE OF APPROVAL
(Section 8(2), Section 9(5))

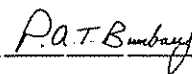
STATUTORY DECLARATION:
I/WE the undersigned do solemnly declare that:-
1 I/WE (am/are) the Owner-Developer or
the duly authorized Agent of the Owner-Developer
2 The Strata Plan is entirely for residential use.
3 I/WE make this solemn declaration conscientiously
believing it to be true and knowing that it is of the
same force and effect as if made under Oath


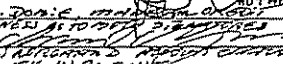

Declared before me at Vancouver in the
Province of British Columbia, this 3rd day of
November, A.D. 1988

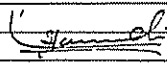
A Notary Public in and for the Province
of British Columbia G. MAZZEI

I hereby certify that the buildings situated on lot 'B'
D.L. 4731, Plan 21219 have been approved for strata plan
development 9 days of NOV 1988

APPROVING OFFICER, RESORT MUNICIPALITY OF WHISTLER
Endorsement pursuant to Section 8(1)
I hereby certify that the facility for parking spaces
which according to form E to the Act was to have been
constructed in conjunction with this phase has been
satisfactorily provided for 9 day of NOV 1988


APPROVING OFFICER, RESORT MUNICIPALITY OF WHISTLER
-CERTIFIED UNDER SECTION 8 (1)
I P.A.T. BUNBURY, BRITISH COLUMBIA LAND SURVEYOR,
HEREBY CERTIFY THAT THE BUILDINGS SHOWN IN THIS STRATA PLAN
HAVE NOT, AS OF THE 31ST DAY OF OCTOBER 1988
BEEN PREVIOUSLY OCCUPIED.
DATED AT WHISTLER, BRITISH COLUMBIA, THIS 31ST DAY OF
OCTOBER 1988


P.A.T. Bunbury
B.C.L.S.

MORTGAGEE
(BANK OF MONTREAL)
BY ITS ATTORNEYS IN LAW

AL. DOMIC... AUTHORIZED SIGNATORY
WITNESS AS TO OFFICIAL CAPACITY

R.N.C. REGISTRAR'S REGISTRATION OFFICE
#208-1516 W. 71ST AVE.
VANCOUVER, B.C. V6P 3C1

Owner - Developer
BLUEBERRY HILL DEVELOPMENT CORP.

AUTHORIZED SIGNATORY

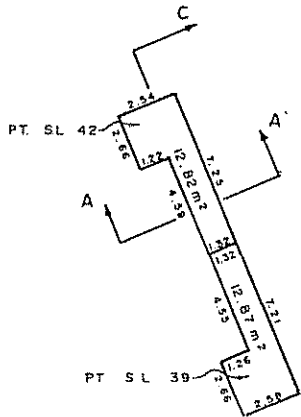
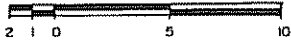
P.A.T.B.
Oct 31 1988

STRATA PLAN
V.R. 2097

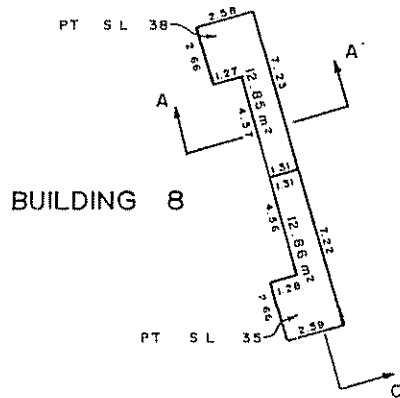
PHASE 2

CRAWL SPACE

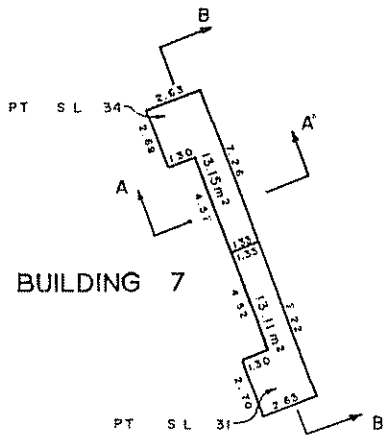
SCALE 1:200m.



BUILDING 9



BUILDING 8



BUILDING 7

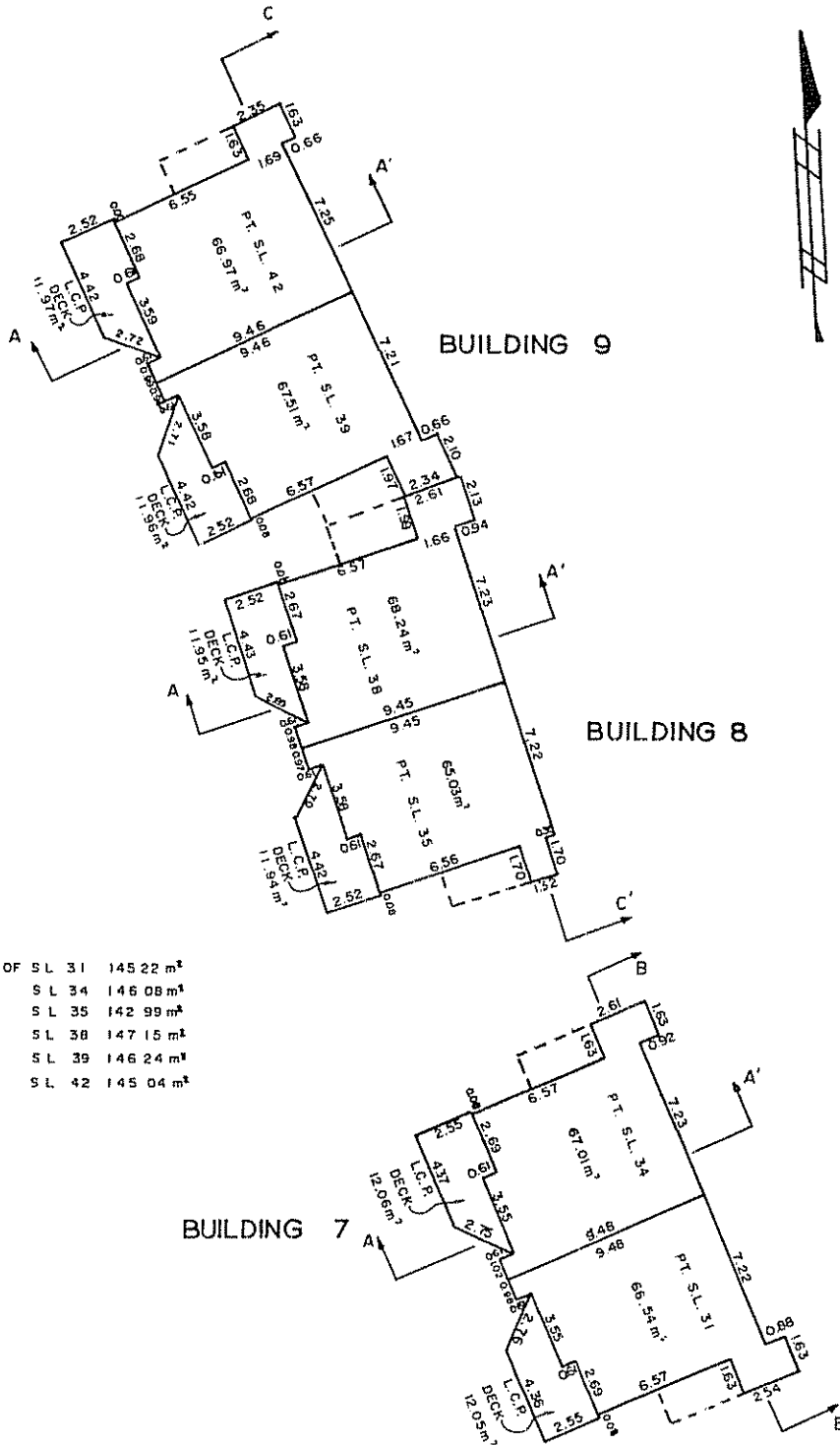


STRATA PLAN
V.R. 2097

PHASE 2

SECOND FLOOR

SCALE 1:200



TOTAL AREA OF S L 31	145 22 m ²
S L 34	146 08 m ²
S L 35	142 99 m ²
S L 38	147 15 m ²
S L 39	146 24 m ²
S L 42	145 04 m ²

DECKS ARE L C P FOR
USE OF ABUTTING S L

P.A.T.B
Oct 31 1988

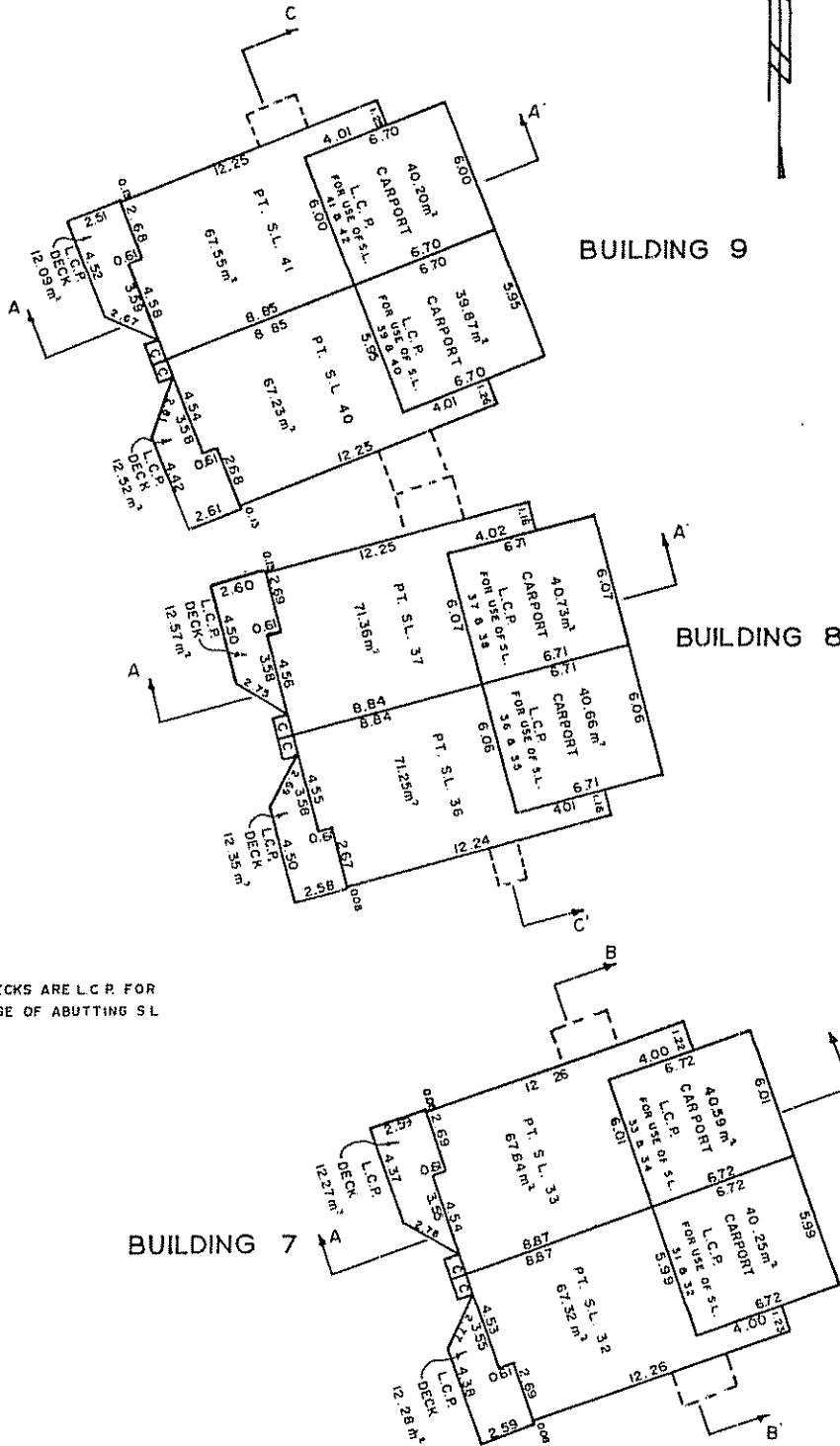
ID:468-11/2

STRATA PLAN
V.R. 2097

PHASE 2

THIRD FLOOR

SCALE 1:200



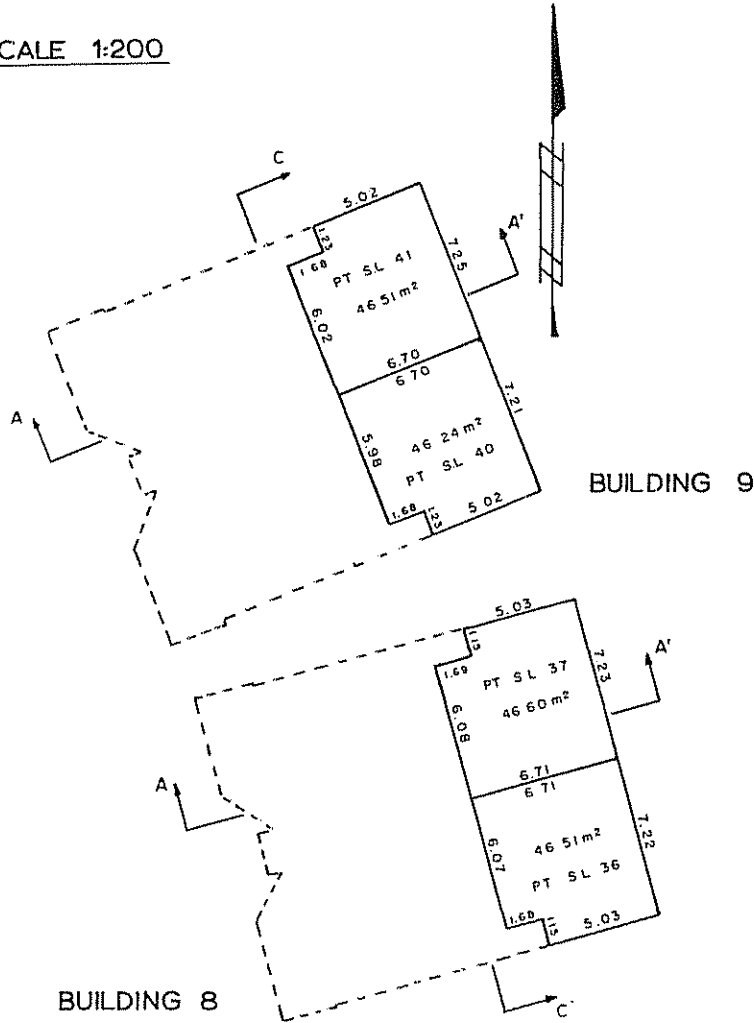
P.A.T.B
Oct. 31 1988

STRATA PLAN
V.R. 2097

PHASE 2

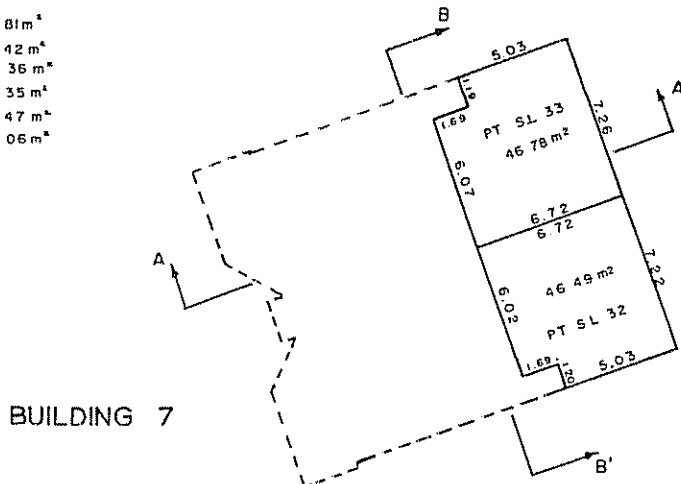
FLOOR ABOVE CARPORT

SCALE 1:200



TOTAL AREA OF

S L 32	113.81 m ²
S L 33	114.42 m ²
S L 36	113.36 m ²
S L 37	113.35 m ²
S L 40	113.47 m ²
S L 41	114.06 m ²



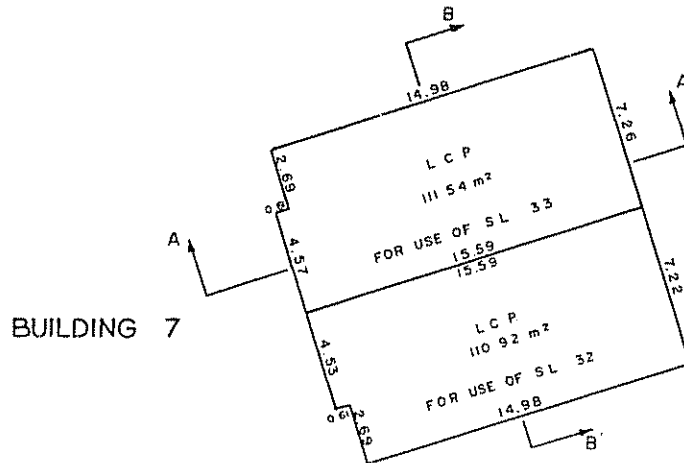
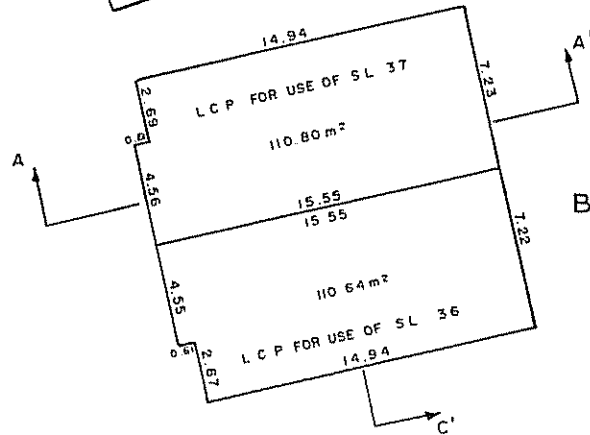
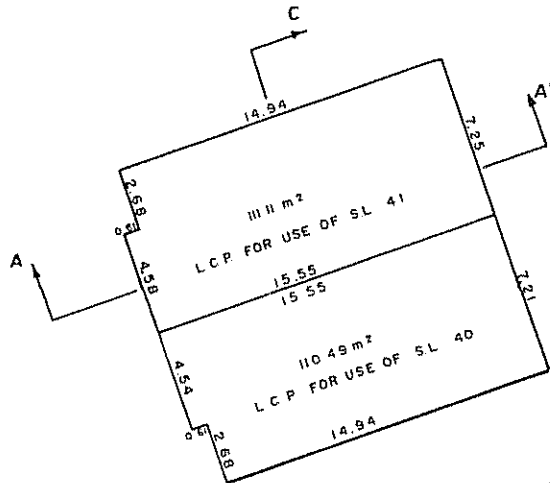
P.A.T.B
Oct 31 1988

STRATA PLAN
V.R. 2097

PHASE 2

ATTIC

SCALE 1:200

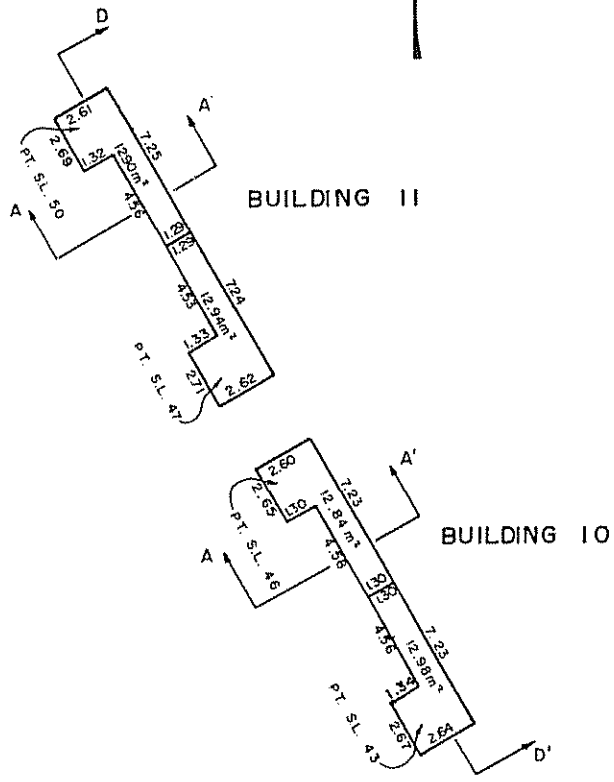


STRATA PLAN
V.R. 2097

PHASE 2

CRAWL SPACE

SCALE 1:200

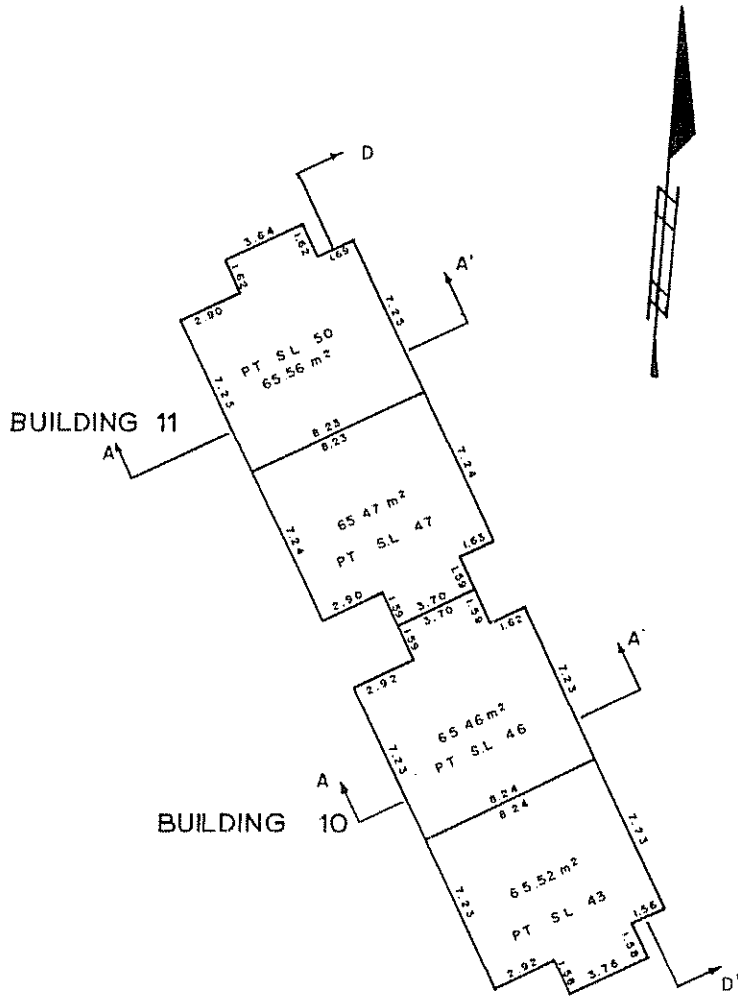


STRATA PLAN
V.R. 2097

PHASE 2

FIRST FLOOR

SCALE 1:200



10-506-11/2

P.A.T.B.
Oct 31 1986

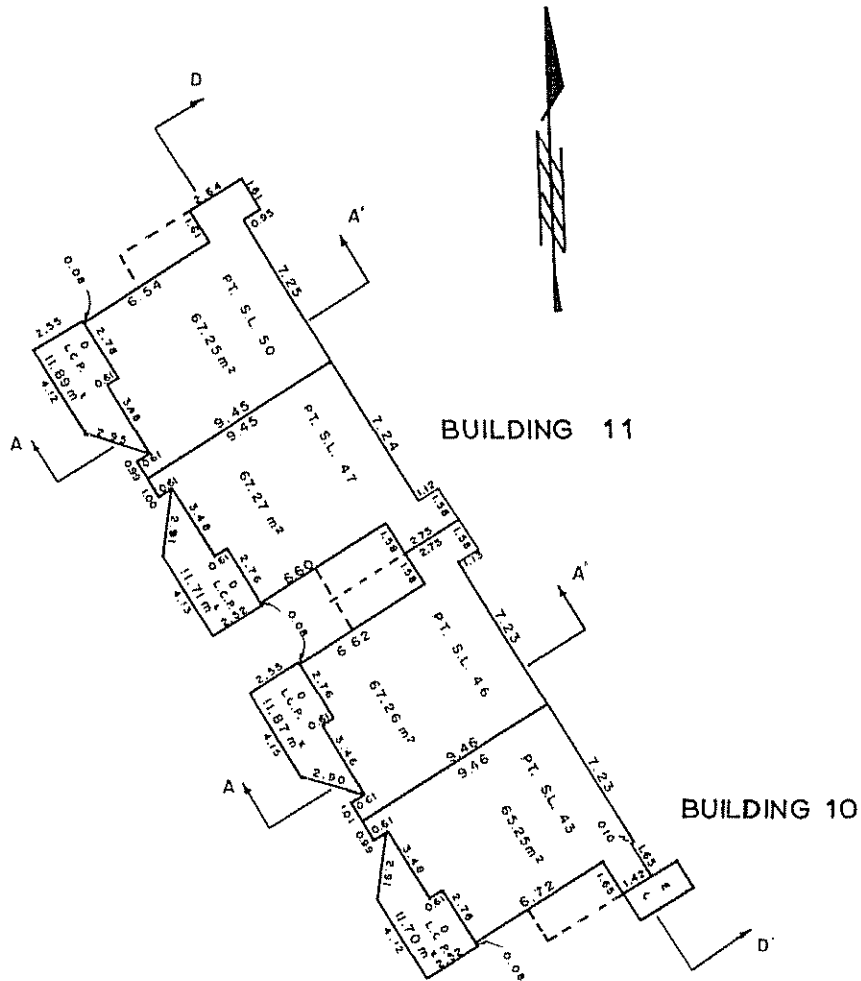
PHASE 2

SECOND FLOOR

SCALE 1:200

Sheet 12 of 32 Sheets
STRATA PLAN
V.R. 2097

TOTAL AREA OF S L 43	143 75 m ²
S L 46	145 56 m ²
S L 47	145 68 m ²
S L 50	145 71 m ²



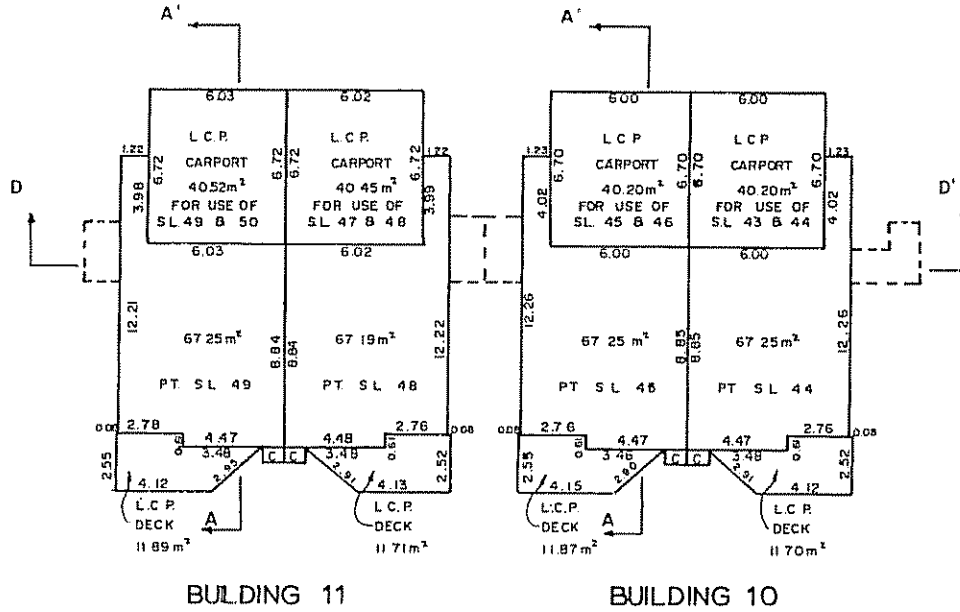
DECKS ARE L.C.P. FOR USE
OF ABUTTING S L

STRATA PLAN
V.R. 2097

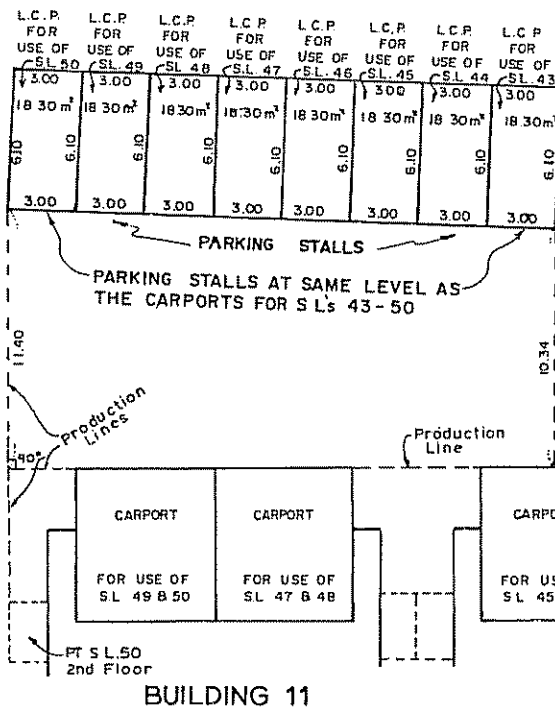
PHASE 2

THIRD FLOOR

SCALE 1:200



DECKS ARE L.C.P. FOR
USE OF ABUTTING SL



P.A.T.B.
Oct. 31 1988

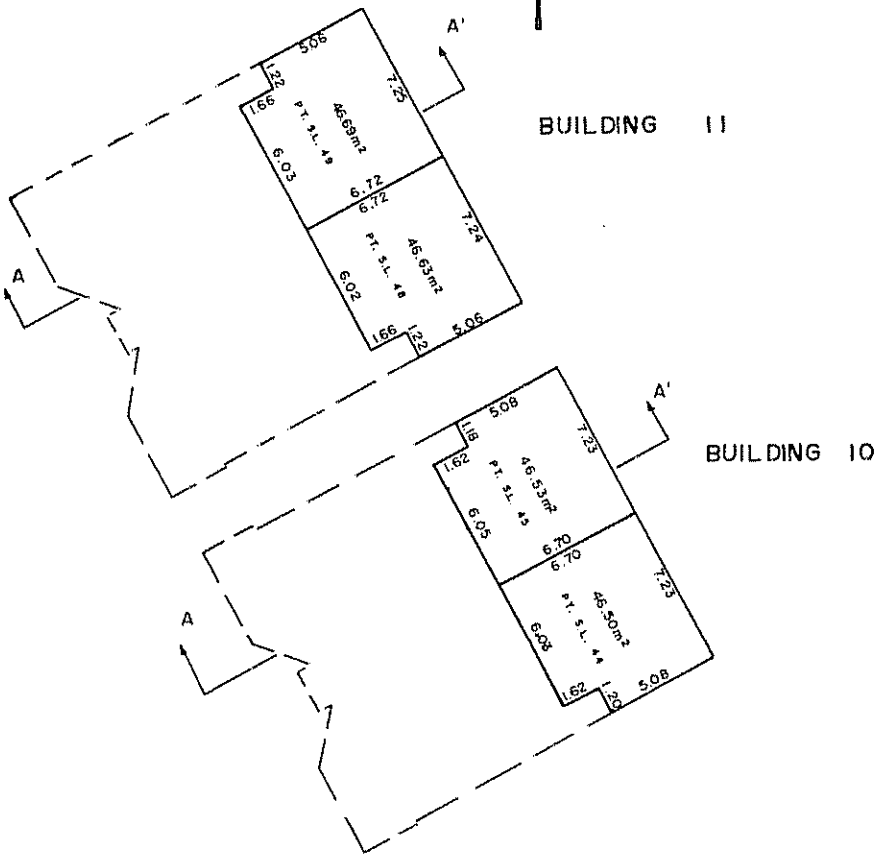
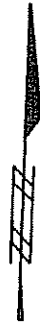
STRATA PLAN
V.R. 2097

PHASE 2

FLOOR ABOVE CARPORT

SCALE 1:200

TOTAL AREA OF	S L 44	113 75m ²
	S L 45	113 78m ²
	S L 48	113 82m ²
	S L 49	113 94m ²



ID:30651112

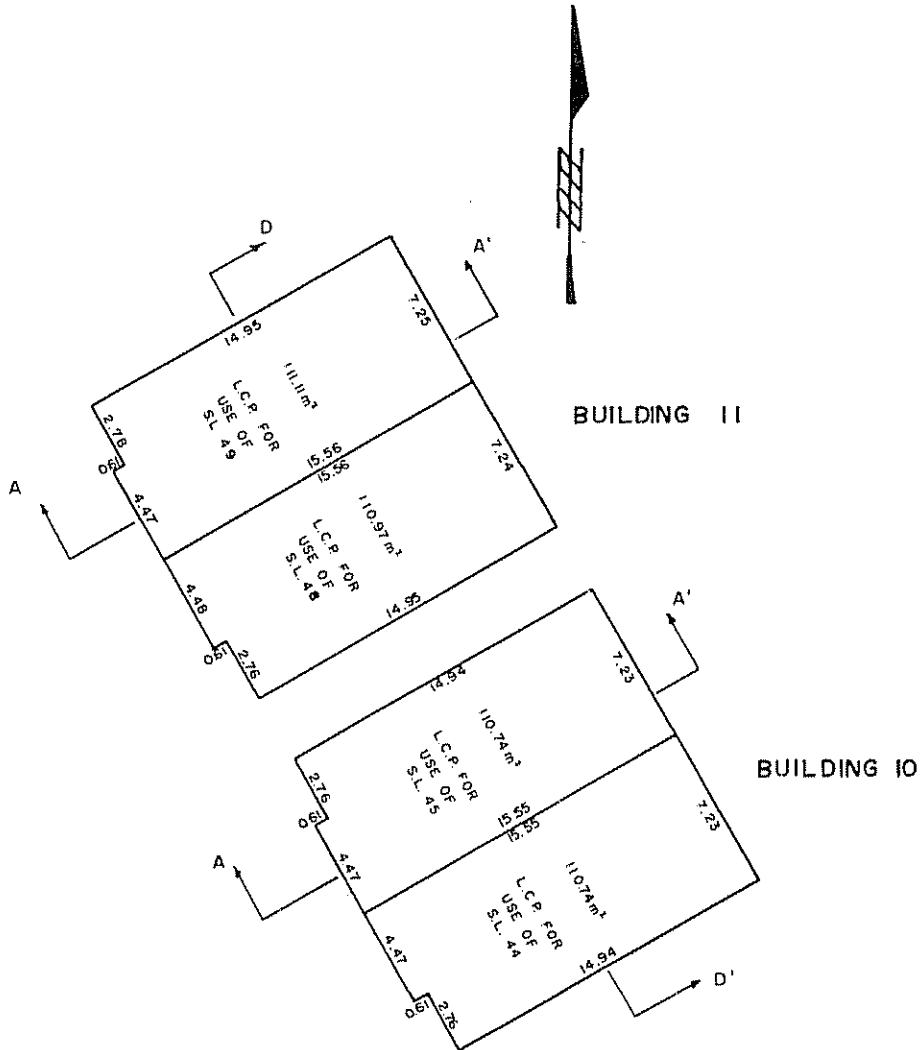
P.A.T.B.
Oct. 31 1988

STRATA PLAN
V.R. 2097

PHASE 2

ATTIC

SCALE 1:200



10-596-1172

P.A.T.B.
Oct. 31 1988

PHASE 2

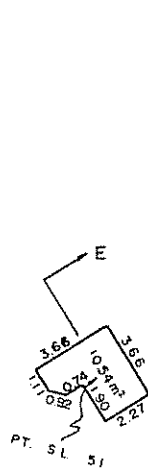
CRAWL SPACE

SCALE 1:200

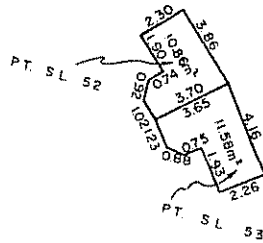
Sheet 16 of 32 Sheets

STRATA PLAN

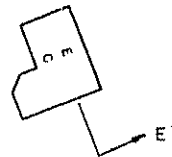
V.R. 2097



BUILDING 12



BUILDING 13



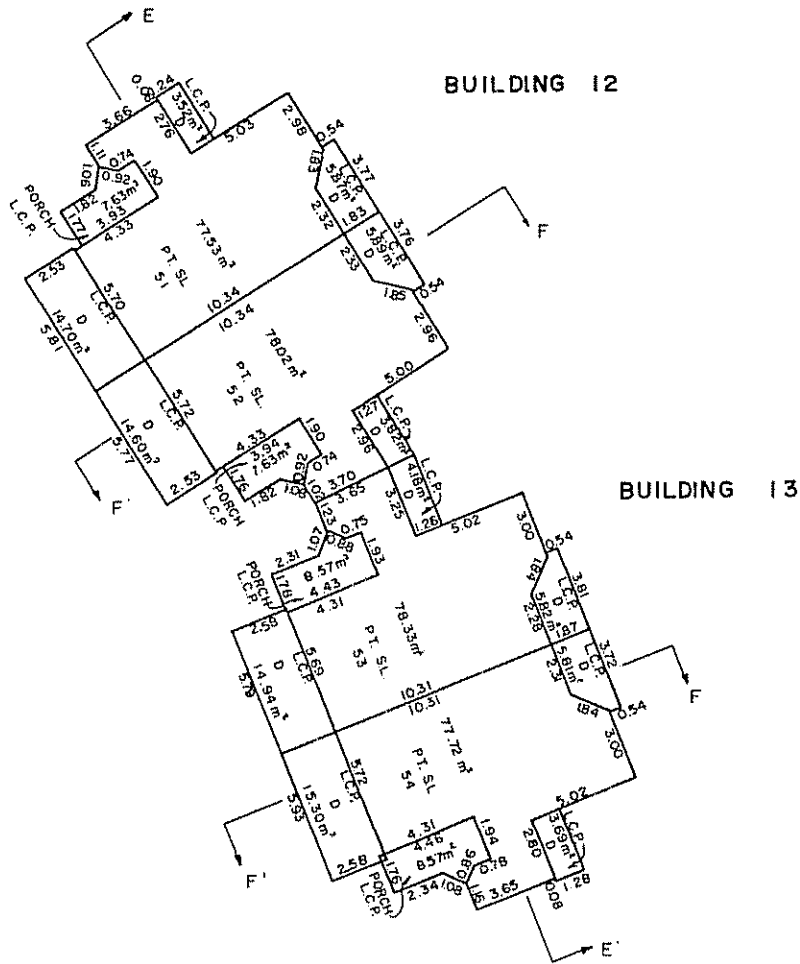
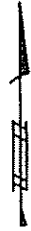
PHASE 2

SECOND FLOOR

SCALE 1:200

Sheet 18 of 32 Sheets.

STRATA PLAN
V.R. 2097



DECKS AND PORCHES ARE L.C.P.
FOR USE OF ABUTTING S.L.

P.A.T.B.

Oct. 31 1988

S-4680-6

STRATA PLAN
V.R. 2097

PHASE 2

THIRD FLOOR

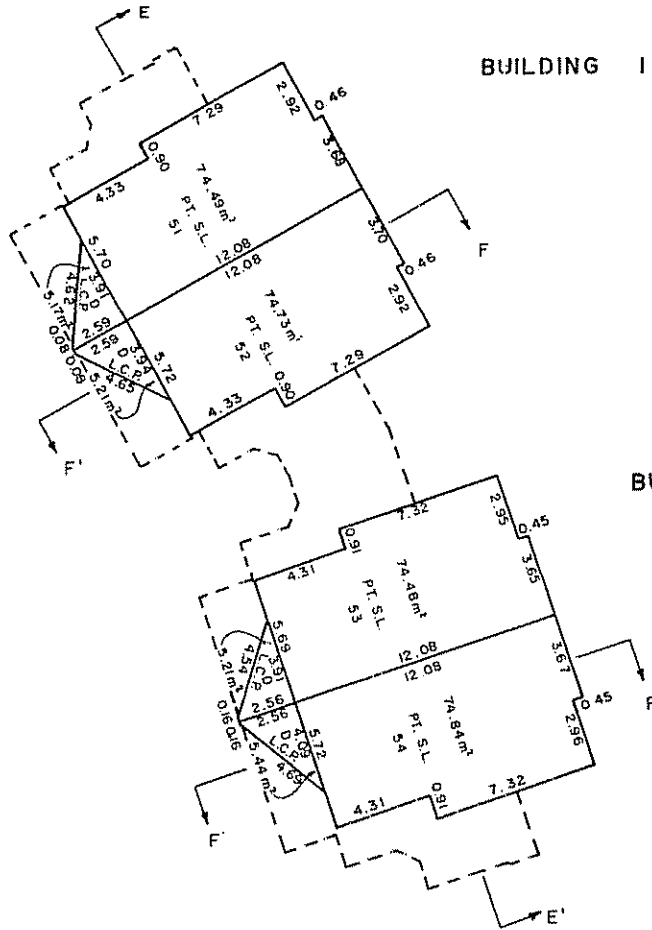
SCALE 1:200

TOTAL AREA OF S L	51	237.40 m ²
S L	52	238.69 m ²
S L	53	239.23 m ²
S L	54	227.77 m ²



BUILDING 12

BUILDING 13



DECKS ARE L C P FOR
USE OF ABUTTING S L

P.A.T.B.
Oct. 31 1988

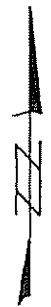
ID:505-1112

PHASE 2

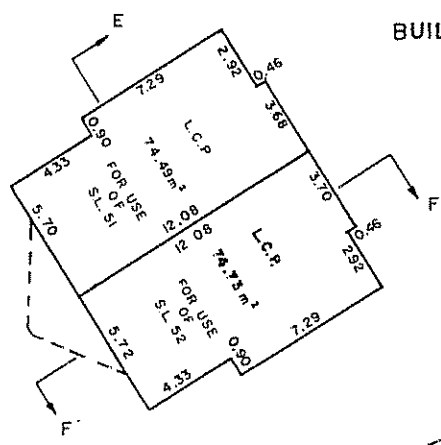
ATTIC

SCALE 1:200

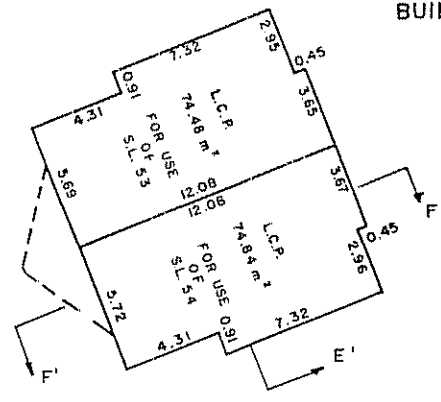
Sheet 20 of 32 Sheets.
STRATA PLAN
V.R. 2097



BUILDING 12



BUILDING 13



10-586-11/2

P.A.T.B.
Oct. 31 1988

PHASE 2

STRATA PLAN
V.R. 2097

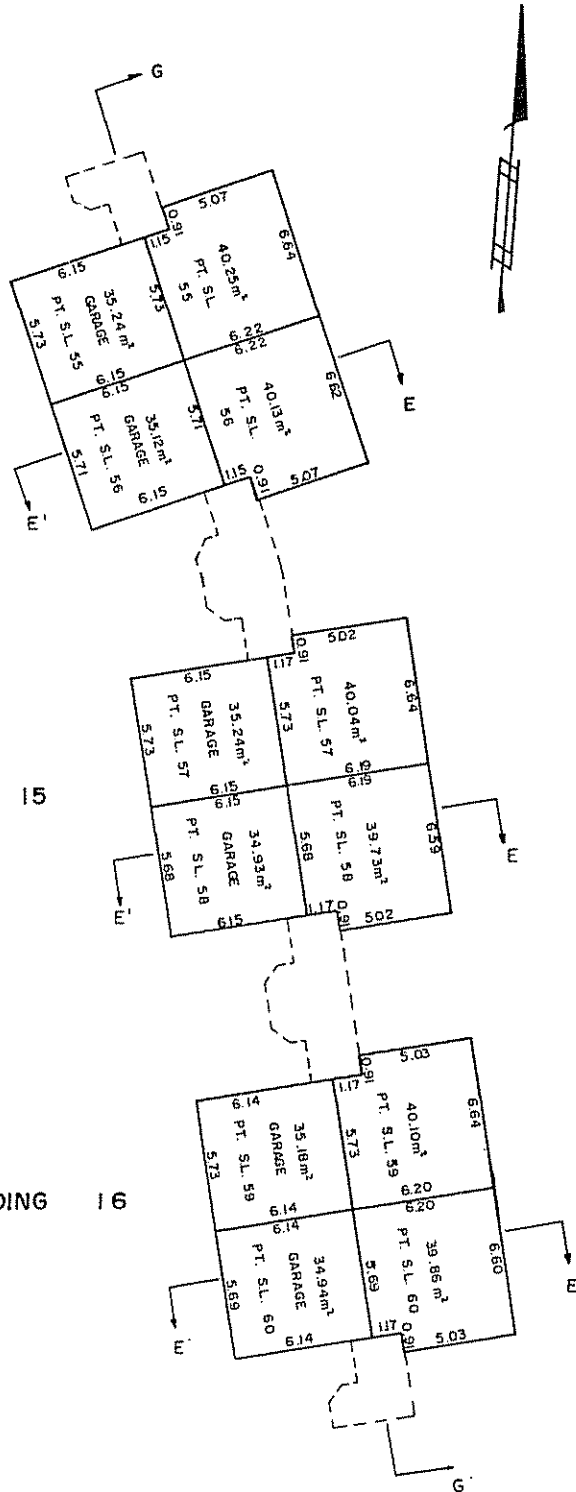
FIRST FLOOR

SCALE 1:200

BUILDING 14

BUILDING 15

BUILDING 16



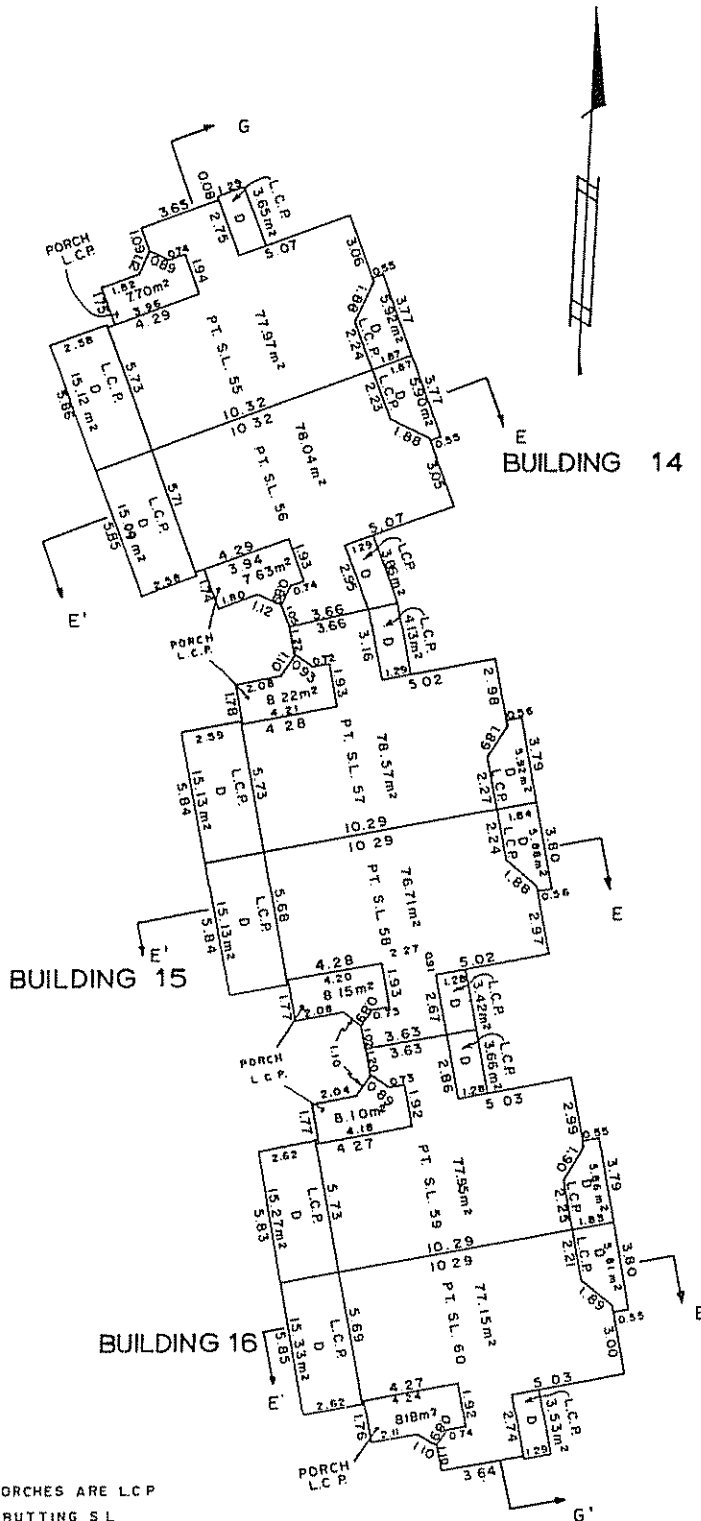
P.A.T.B.
Oct 31 1988

PHASE 2

STRATA PLAN
V.R. 2097

SECOND FLOOR

SCALE 1:200



DECKS AND PORCHES ARE L.C.P.
FOR USE OF ABUTTING S.L.

P.A.T.B.
Oct. 31 1988

ID:605-11/2

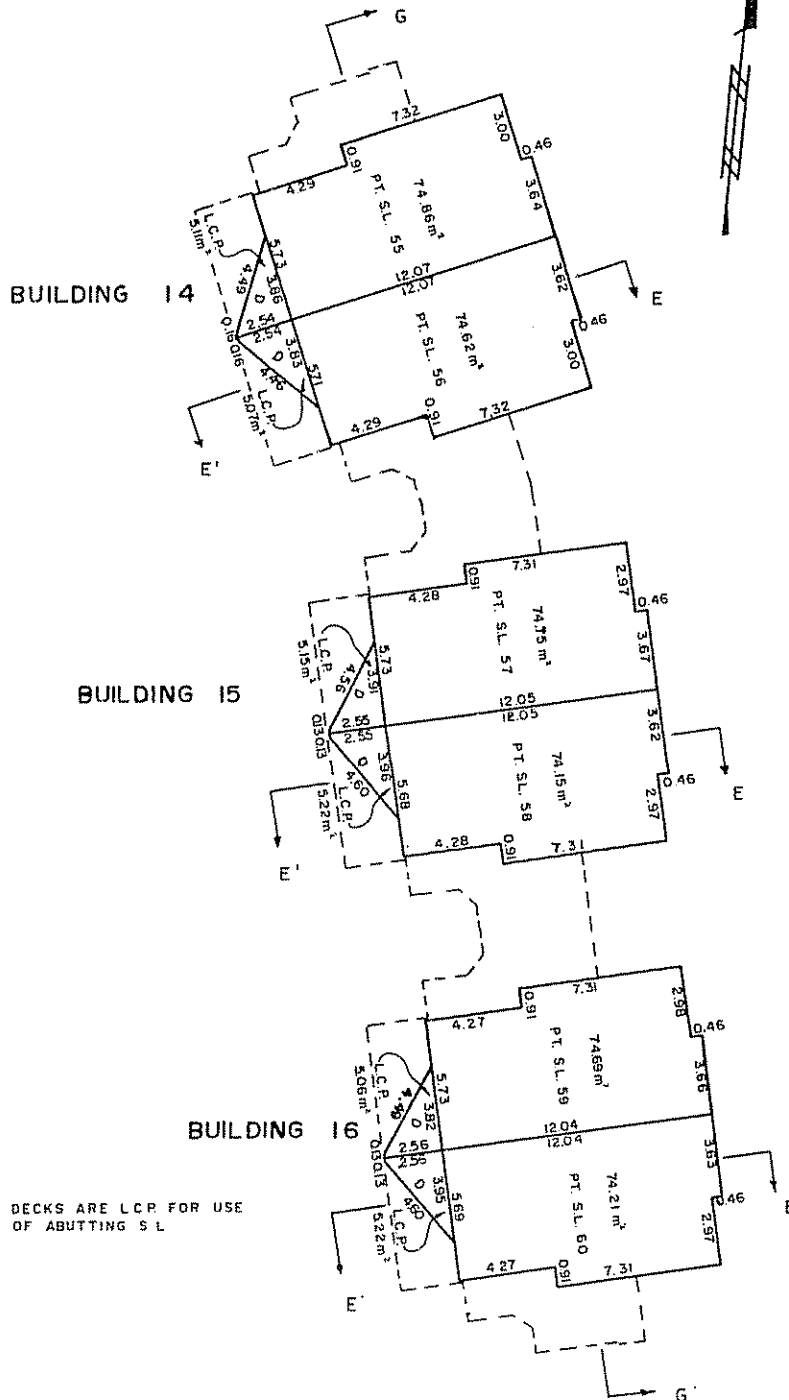
PHASE 2

STRATA PLAN
V.R. 2097

THIRD FLOOR

SCALE 1:200

TOTAL AREA OF	SL 55	228 32 m ²
	SL 56	238 70 m ²
	SL 57	240 10 m ²
	SL 58	235 69 m ²
	SL 59	238 77 m ²
	SL 60	236 62 m ²



DECKS ARE L.C.P. FOR USE OF ABUTTING S.L.

D.A.T.B.
Oct. 31 1988

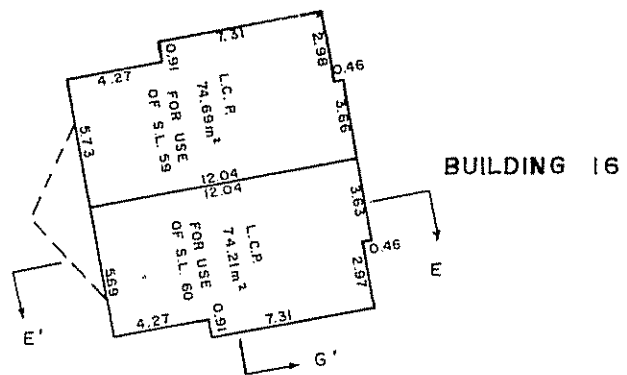
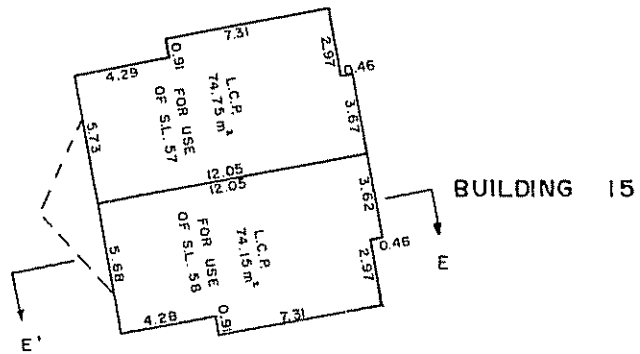
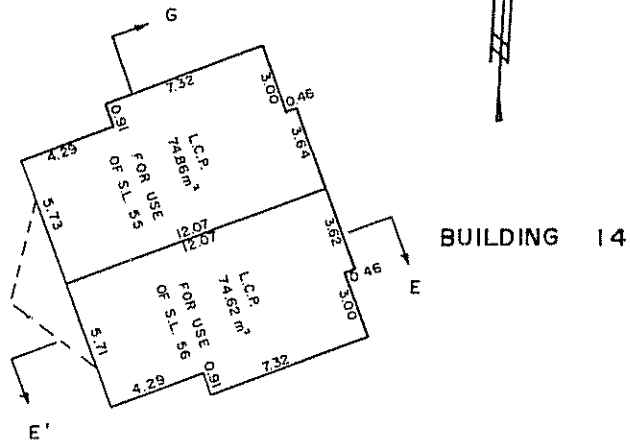
PHASE 2

ATTIC

SCALE 1:200

Sheet 25 of 32 Sheets

STRATA PLAN
V.R. 2097

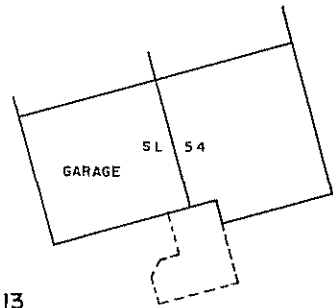


STRATA PLAN
V.R. 2097

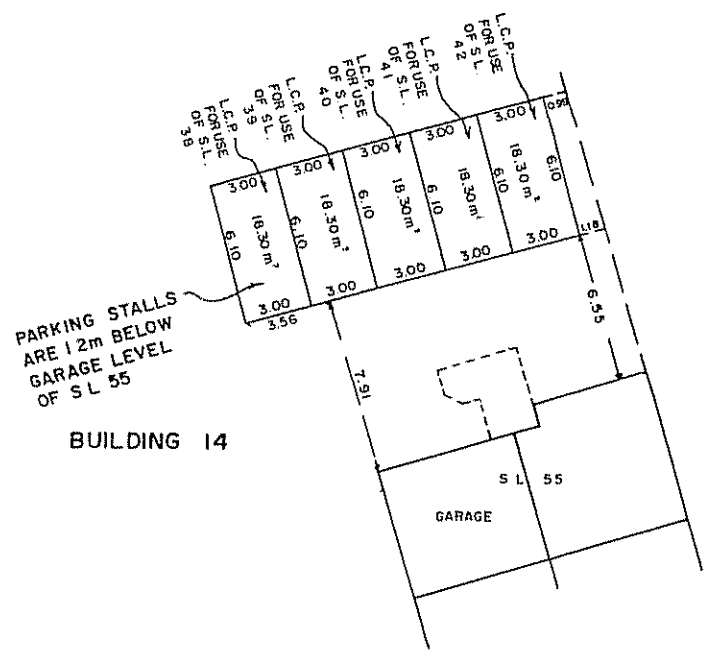
PHASE 2

GROUND LEVEL PARKING STALLS

SCALE 1:200



BUILDING 13



PARKING STALLS
ARE 12m BELOW
GARAGE LEVEL
OF S L 55

BUILDING 14

10-566-11/2

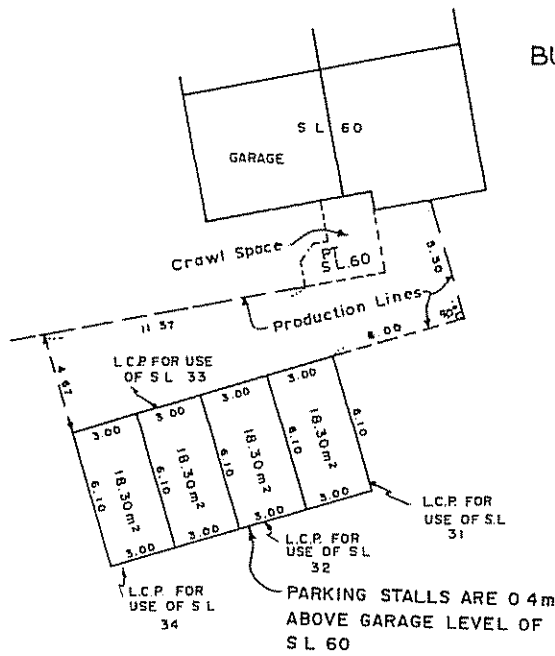
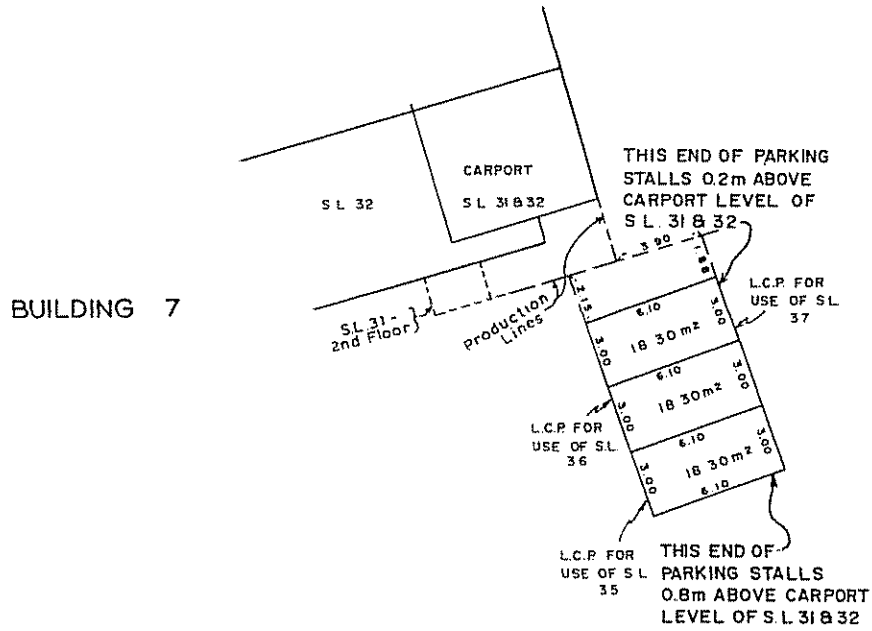
P.R.T.B.
Oct. 31 1988

STRATA PLAN V.R. 2097

PHASE 2

GROUND LEVEL PARKING STALLS

SCALE : 1:200



ID:595-112

P.A.T.B
Oct. 31 1988

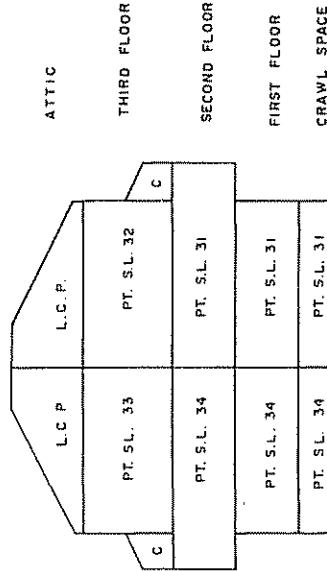
STRATA PLAN
V.R. 2097

PHASE 2

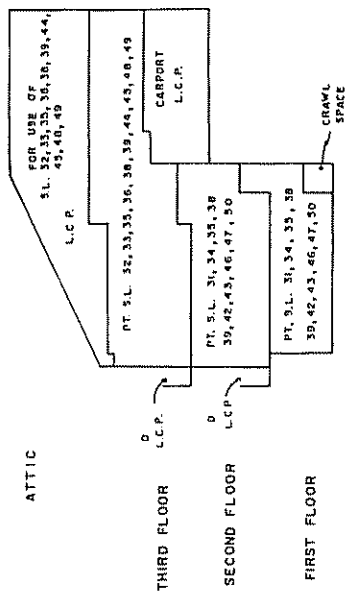
SECTIONS

SCALE 1:200

BUILDING 7
SECTION B-B'



BUILDINGS
78,9,10,11
SECTION A-A'



Pa.T.B
Oct. 31 1988

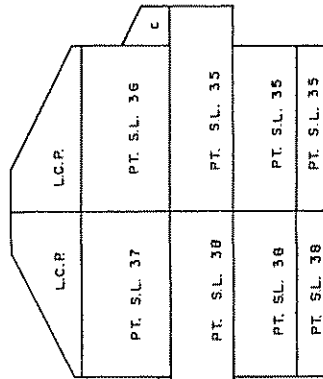
STRATA PLAN
V.R. 2097

PHASE 2

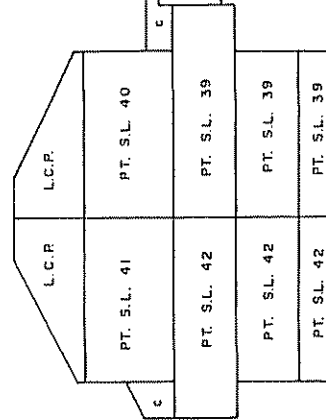
SECTION C-C'

SCALE 1:200

BUILDING 8



BUILDING 9



ATTIC

THIRD FLOOR

SECOND FLOOR

FIRST FLOOR

CRAWL SPACE

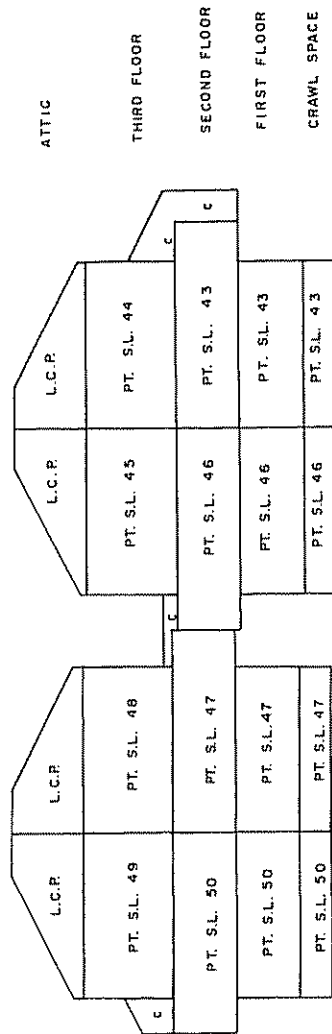
PHASE 2

SECTION D-D'

SCALE 1:200

BUILDING 10

BUILDING 11



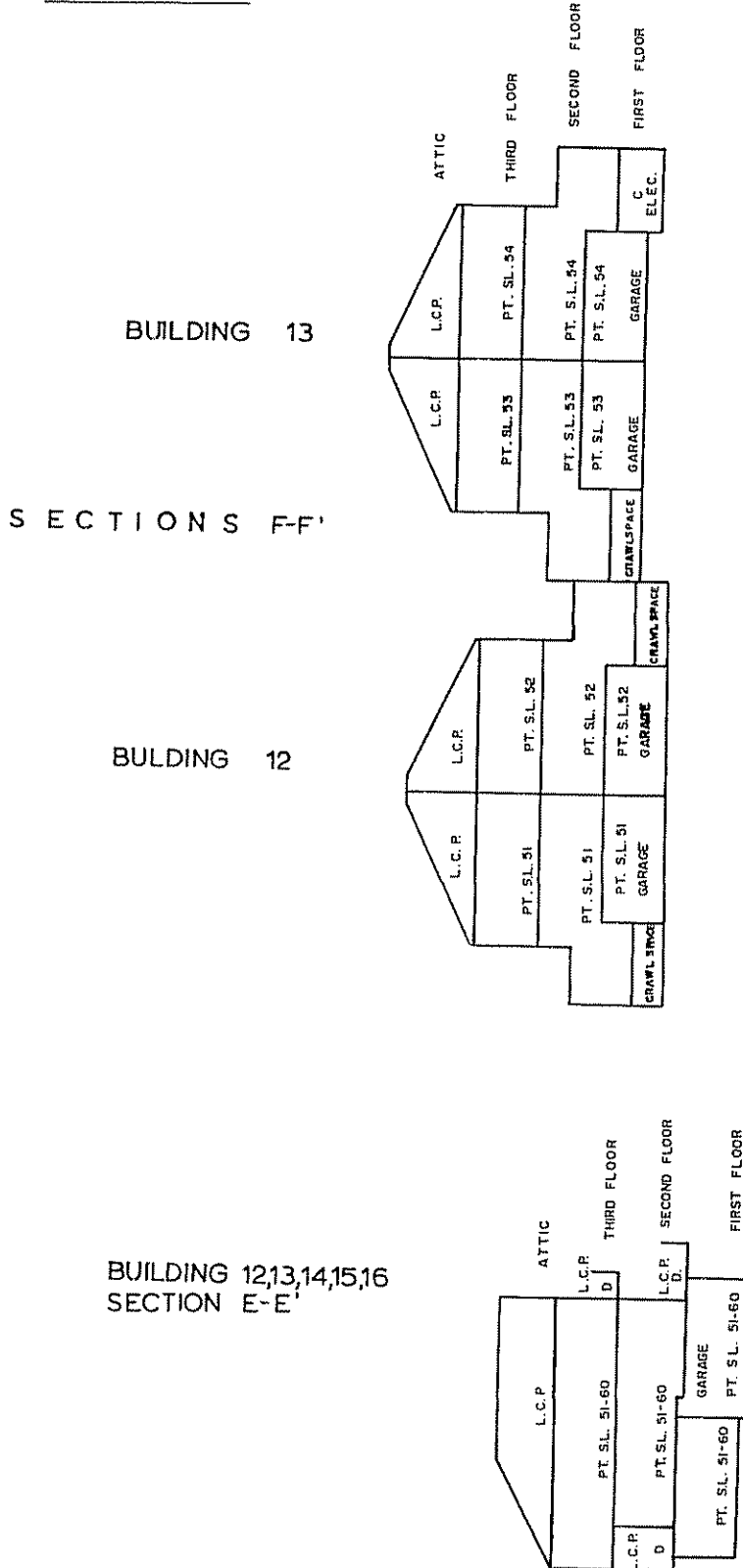
PHASE 2

Sheet 31 of 32 Sheets.

STRATA PLAN
V.R. 2097

SECTIONS

SCALE 1:200



12-508-11/2

Pat B.
Oct. 31 1988

STRATA PLAN
V.R. 2097

PHASE 2

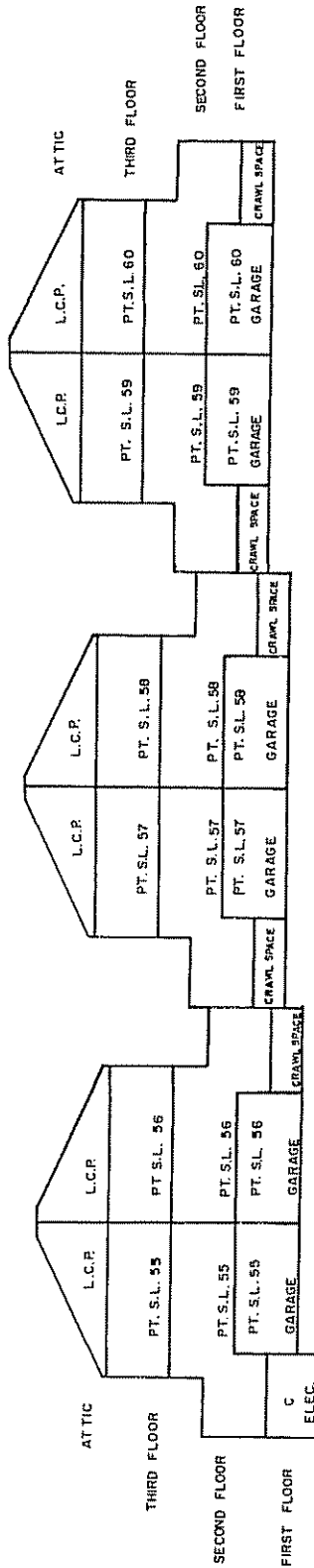
SECTION G-G'

SCALE 1:200

BUILDING 16

BUILDING 15

BUILDING 14



DS-88-11/2

P.A.T.B
Oct. 31 1988