

STRATA PLAN OF LOT 34, AND AN  
 UNDIVIDED 1086/10000 INTEREST IN  
 LOT 11, PLAN 19070, BLK. F, D.L.  
 4749, PLAN 21305, GP I, N.W.D.  
 RESORT MUNICIPALITY OF WHISTLER  
 SCALE : 1 : 750

FIRST SHEET SHEET 1 OF 21 SHEETS

STRATA PLAN VR 2010  
 DEPOSITED AND REGISTERED IN THE LAND  
 TITLE OFFICE AT VANCOUVER, B.C.,  
 THIS 19 DAY OF ~~NOVEMBER~~ 1987.

This Plan lies within the Squamish - Lillooet Regional District

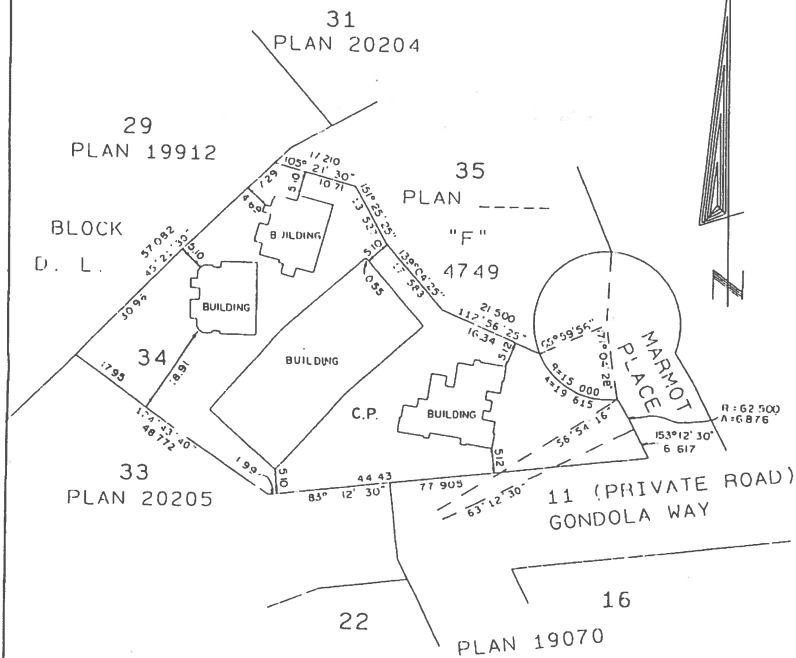
THE ADDRESS FOR SERVICE OF DOCUMENTS  
 ON THE STRATA CORPORATION IS:-

THE OWNERS STRATA PLAN VR 2010,  
 170 FIRST CITY DEVELOPMENT CORP. LTD.  
 14 FLOOR, 777 HORNBY STREET  
 VANCOUVER, B.C. V6Z 1S4

CIVIC ADDRESS :-  
 2217 (I-39) MARMOT PLACE, WHISTLER, BC

J. Small  
 Deputy REGISTRAR

R115312



NOTE  
 C.P. denotes COMMON PROPERTY  
 ALL DISTANCES ARE IN METRES

I, BRIAN O. BROWN, OF WHISTLER, B.C.,  
 A BRITISH COLUMBIA LAND SURVEYOR,  
 HEREBY CERTIFY THAT THE BUILDING  
 ERECTED ON THE PARCEL DESCRIBED  
 ABOVE IS WHOLLY WITHIN THE EXTERNAL  
 BOUNDARIES OF THAT PARCEL.  
 DATED AT WHISTLER, B.C. THIS 26th DAY  
 OF OCTOBER, 1987.

*Brian Brown* B.C.L.S.

Robert B. Brown & Associates  
 Professional Land Surveyors  
 P.O. Box 13, Whistler, B.C.  
 V0N 1B0 932 - 5426

CONDOMINIUM ACT

SECOND SHEET SHEET 2 OF 21 SHEETS

STRATA PLAN VR 2010

LOT NO	SHEET NO.	FORM 1	FORM 2	FORM 3
		SECTION 3(1)(f)	SECTION 3(1)(g)	SECTION 3(1)(h)
		SCHEDULE OF UNIT ENTITLEMENT	SCHEDULE OF INTEREST UPON DESTRUCTION	SCHEDULE OF VOTING RIGHTS
		UNIT ENTITLEMENT	INTEREST UPON DESTRUCTION	NUMBER OF VOTES
1	5	5847	25125	
2	5	5785	25125	
3	5	5814	24000	
4	6B7	10718	43875	
5	6B7	10615	43125	
6	6	5691	25875	
7	7	5687	29625	
8	9	5646	24375	
9	9	5823	25125	
10	9	5795	26250	
11	9	5670	25875	
12	10	5517	25125	
13	10B11	10818	43125	
14	10B11	10677	44625	
15	10	5564	26625	
16	11	5578	30375	
17	11	5576	31125	
18	9	5701	24375	
19	9	5881	22875	
20	9	5881	27750	
21	9	5708	25875	
22	10	5561	26250	
23	10B11	10861	43875	
24	10B11	10818	45375	
25	11	5594	27000	
26	11	5617	30375	
27	11	5633	31875	
28	12	5406	27750	
29	12	5184	26250	
30	12	5414	27000	
31	13	5352	31875	
32	13	5129	30000	
33	13	5374	30750	
34	14	5211	26250	
35	14	5207	27000	
36	14	5417	30000	
37	15	5143	29625	
38	15	5139	30750	
39	15	5353	30000	
AGGREGATE		247405	1172250	

ACCEPTED AS 10 FORMS  
1, 2 & 3  
THIS 6th DAY OF November 1987.

REGISTRAR OF REAL ESTATE

CONDOMINIUM ACT

STRATA PLAN VR 2010

STATUTORY DECLARATION

I, THE UNDERSIGNED, DO SOLEMNLY DECLARE THAT-  
(1) I, THE UNDERSIGNED, AM THE DULY AUTHORIZED AGENT OF THE OWNER DEVELOPER.  
(2) THE STRATA PLAN IS ENTIRELY FOR RESIDENTIAL USE  
I MAKE THIS SOLEMN DECLARATION CONSCIENTIOUSLY BELIEVING  
IT TO BE TRUE, AND KNOWING THAT IT IS OF THE SAME FORCE  
AND EFFECT AS IF MADE UNDER OATH.

DECLARED BEFORE ME AT- VANCOUVER  
IN THE PROVINCE OF BRITISH COLUMBIA  
THIS 27 DAY OF OCTOBER, 1987

[Signature]

[Signature]  
COMMISSIONER FOR TAKING AFFIDAVITS WITHIN THE  
PROVINCE OF BRITISH COLUMBIA

SIGNATURES

OWNER

FIRST CITY DEVELOPMENT CORP. LTD.

[Signature]  
AUTHORIZED SIGNATORY

[Signature]  
AUTHORIZED SIGNATORY

MORTGAGEE

THE NATIONAL BANK OF CANADA  
(FORMERLY THE MERCANTILE BANK OF CANADA)

*Sec. P.F. 113503  
by its lawful attorney under no P12716*

[Signature]  
AUTHORIZED SIGNATORY *Vice President*

[Signature]  
AUTHORIZED SIGNATORY *Account Manager  
North American Corporate Banking*

*witness as to both signatures*

[Signature]  
BETTA JAY  
8189 Explorers Walk  
Vancouver, B.C. V5S 4A9  
Secretary

I, BRIAN O. BROWN OF THE MUNICIPALITY  
OF WHISTLER, BRITISH COLUMBIA LAND  
SURVEYOR, HEREBY CERTIFY THAT THE  
BUILDING SHOWN IN THIS STRATA PLAN  
HAS NOT, AS OF THE 26th DAY OF  
OCTOBER, 1987 BEEN PREVIOUSLY  
OCCUPIED. DATED AT WHISTLER, BRITISH  
COLUMBIA THIS 26th DAY OF OCTOBER, 1987.

[Signature] B.C.L.S.

## STRATA PLAN VR. 2010

SHARES OF UNDIVIDED 1086/10000  
INTEREST IN LOT 11

S L NO.	AREA	SHARE OF UNDIVIDED 1086/10000 INTEREST IN LOT 11
1	54.32 m <sup>2</sup>	26/10000
2	53.74 m <sup>2</sup>	25/10000
3	54.01 m <sup>2</sup>	25/10000
4	99.57 m <sup>2</sup>	47/10000
5	98.62 m <sup>2</sup>	47/10000
6	52.87 m <sup>2</sup>	25/10000
7	52.83 m <sup>2</sup>	25/10000
8	52.45 m <sup>2</sup>	25/10000
9	54.10 m <sup>2</sup>	26/10000
10	53.84 m <sup>2</sup>	25/10000
11	52.68 m <sup>2</sup>	25/10000
12	51.25 m <sup>2</sup>	24/10000
13	100.5 m <sup>2</sup>	47/10000
14	99.19 m <sup>2</sup>	47/10000
15	51.63 m <sup>2</sup>	24/10000
16	51.52 m <sup>2</sup>	24/10000
17	51.80 m <sup>2</sup>	24/10000
18	52.36 m <sup>2</sup>	25/10000
19	54.64 m <sup>2</sup>	26/10000
20	54.64 m <sup>2</sup>	26/10000
21	53.03 m <sup>2</sup>	25/10000
22	51.66 m <sup>2</sup>	24/10000
23	100.9 m <sup>2</sup>	48/10000
24	100.5 m <sup>2</sup>	47/10000
25	51.97 m <sup>2</sup>	25/10000
26	52.18 m <sup>2</sup>	25/10000
27	52.33 m <sup>2</sup>	25/10000
28	50.22 m <sup>2</sup>	24/10000
29	48.16 m <sup>2</sup>	23/10000
30	50.30 m <sup>2</sup>	24/10000
31	49.72 m <sup>2</sup>	23/10000
32	47.65 m <sup>2</sup>	22/10000
33	49.93 m <sup>2</sup>	24/10000
34	48.41 m <sup>2</sup>	23/10000
35	48.37 m <sup>2</sup>	23/10000
36	50.33 m <sup>2</sup>	24/10000
37	47.78 m <sup>2</sup>	23/10000
38	47.74 m <sup>2</sup>	23/10000
39	49.73 m <sup>2</sup>	23/10000
TOTALS	2298.43 m <sup>2</sup>	1086/10000

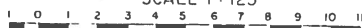
BB

B.C.L.S

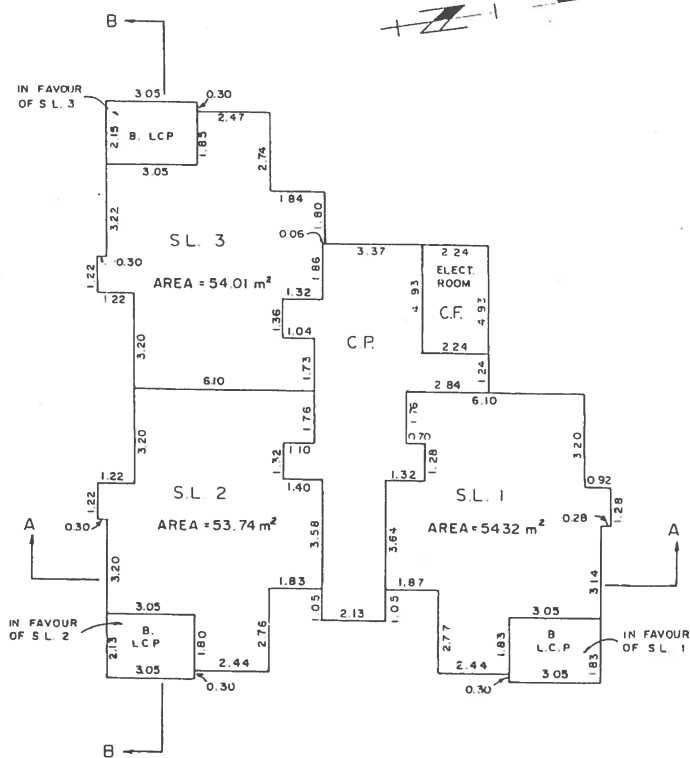
October 26 1987

# PLAN OF STRATA LOTS 1-3

SCALE 1:125



STRATA PLAN VR *2010*



PLAN OF GROUND FLOOR  
BUILDING 'A'

1. 0.30  
 2. 1.83  
 3. 2.15  
 4. 3.05  
 5. 2.47  
 6. 1.83  
 7. 2.74  
 8. 1.84  
 9. 0.06  
 10. 1.86  
 11. 1.32  
 12. 3.37  
 13. 2.24  
 14. 4.93  
 15. 2.24  
 16. 4.91  
 17. 1.32  
 18. 1.04  
 19. 1.36  
 20. 3.37  
 21. 1.75  
 22. 1.76  
 23. 1.10  
 24. 1.32  
 25. 2.84  
 26. 6.10  
 27. 3.20  
 28. 1.24  
 29. 1.24  
 30. 6.10  
 31. 3.20  
 32. 0.92  
 33. 1.28  
 34. 1.28  
 35. 1.28  
 36. 3.20  
 37. 3.20  
 38. 1.22  
 39. 1.22  
 40. 0.30  
 41. 3.20  
 42. 3.05  
 43. 3.05  
 44. 2.13  
 45. 1.80  
 46. 2.44  
 47. 2.76  
 48. 1.83  
 49. 1.05  
 50. 3.58  
 51. 1.40  
 52. 1.32  
 53. 3.64  
 54. 1.87  
 55. 2.13  
 56. 1.05  
 57. 3.14  
 58. 3.05  
 59. 3.05  
 60. 2.77  
 61. 2.44  
 62. 1.83  
 63. 0.30  
 64. 0.30

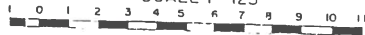
IN FAVOUR OF S.L. 3  
 B. L.C.P.  
 S.L. 3  
 AREA = 54.01 m<sup>2</sup>  
 C.P.  
 ELECT. ROOM  
 C.F.  
 S.L. 2  
 AREA = 53.74 m<sup>2</sup>  
 B. L.C.P.  
 S.L. 1  
 AREA = 54.32 m<sup>2</sup>  
 B. L.C.P.  
 IN FAVOUR OF S.L. 2  
 IN FAVOUR OF S.L. 1

SECTION LINES:  
 A-A (Horizontal)  
 B-B (Vertical)

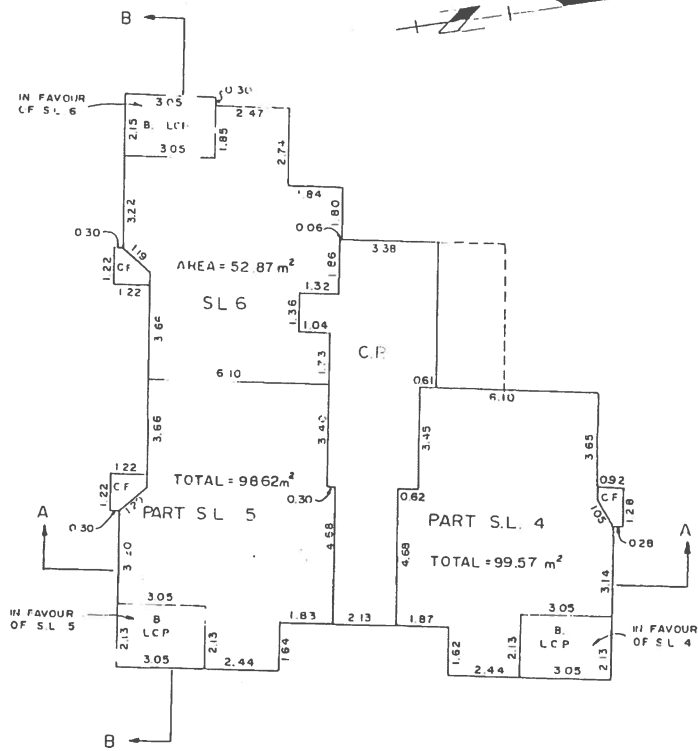
*BB*  
 B.C.L.S.  
 October 26 1987

# PLAN OF STRATA LOTS 4-6

SCALE 1:125

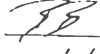


STRATA PLAN VR 2010



PLAN OF SECOND FLOOR  
BUILDING 'A'

0000  
 01 DEFINES STRATA LOT  
 02 DEFINES COMMON PROPERTY  
 03 DEFINES UNDEVELOPED PROPERTY  
 04 DEFINES COMMON FACILITY  
 05 DEFINES COMMON FACILITY  
 06 DEFINES COMMON FACILITY  
 07 DEFINES COMMON FACILITY  
 08 DEFINES COMMON FACILITY  
 09 DEFINES COMMON FACILITY  
 10 DEFINES COMMON FACILITY  
 11 DEFINES COMMON FACILITY  
 12 DEFINES COMMON FACILITY  
 13 DEFINES COMMON FACILITY  
 14 DEFINES COMMON FACILITY  
 15 DEFINES COMMON FACILITY  
 16 DEFINES COMMON FACILITY  
 17 DEFINES COMMON FACILITY  
 18 DEFINES COMMON FACILITY  
 19 DEFINES COMMON FACILITY  
 20 DEFINES COMMON FACILITY  
 21 DEFINES COMMON FACILITY  
 22 DEFINES COMMON FACILITY  
 23 DEFINES COMMON FACILITY  
 24 DEFINES COMMON FACILITY  
 25 DEFINES COMMON FACILITY  
 26 DEFINES COMMON FACILITY  
 27 DEFINES COMMON FACILITY  
 28 DEFINES COMMON FACILITY  
 29 DEFINES COMMON FACILITY  
 30 DEFINES COMMON FACILITY  
 31 DEFINES COMMON FACILITY  
 32 DEFINES COMMON FACILITY  
 33 DEFINES COMMON FACILITY  
 34 DEFINES COMMON FACILITY  
 35 DEFINES COMMON FACILITY  
 36 DEFINES COMMON FACILITY  
 37 DEFINES COMMON FACILITY  
 38 DEFINES COMMON FACILITY  
 39 DEFINES COMMON FACILITY  
 40 DEFINES COMMON FACILITY  
 41 DEFINES COMMON FACILITY  
 42 DEFINES COMMON FACILITY  
 43 DEFINES COMMON FACILITY  
 44 DEFINES COMMON FACILITY  
 45 DEFINES COMMON FACILITY  
 46 DEFINES COMMON FACILITY  
 47 DEFINES COMMON FACILITY  
 48 DEFINES COMMON FACILITY  
 49 DEFINES COMMON FACILITY  
 50 DEFINES COMMON FACILITY  
 51 DEFINES COMMON FACILITY  
 52 DEFINES COMMON FACILITY  
 53 DEFINES COMMON FACILITY  
 54 DEFINES COMMON FACILITY  
 55 DEFINES COMMON FACILITY  
 56 DEFINES COMMON FACILITY  
 57 DEFINES COMMON FACILITY  
 58 DEFINES COMMON FACILITY  
 59 DEFINES COMMON FACILITY  
 60 DEFINES COMMON FACILITY  
 61 DEFINES COMMON FACILITY  
 62 DEFINES COMMON FACILITY  
 63 DEFINES COMMON FACILITY  
 64 DEFINES COMMON FACILITY  
 65 DEFINES COMMON FACILITY  
 66 DEFINES COMMON FACILITY  
 67 DEFINES COMMON FACILITY  
 68 DEFINES COMMON FACILITY  
 69 DEFINES COMMON FACILITY  
 70 DEFINES COMMON FACILITY  
 71 DEFINES COMMON FACILITY  
 72 DEFINES COMMON FACILITY  
 73 DEFINES COMMON FACILITY  
 74 DEFINES COMMON FACILITY  
 75 DEFINES COMMON FACILITY  
 76 DEFINES COMMON FACILITY  
 77 DEFINES COMMON FACILITY  
 78 DEFINES COMMON FACILITY  
 79 DEFINES COMMON FACILITY  
 80 DEFINES COMMON FACILITY  
 81 DEFINES COMMON FACILITY  
 82 DEFINES COMMON FACILITY  
 83 DEFINES COMMON FACILITY  
 84 DEFINES COMMON FACILITY  
 85 DEFINES COMMON FACILITY  
 86 DEFINES COMMON FACILITY  
 87 DEFINES COMMON FACILITY  
 88 DEFINES COMMON FACILITY  
 89 DEFINES COMMON FACILITY  
 90 DEFINES COMMON FACILITY  
 91 DEFINES COMMON FACILITY  
 92 DEFINES COMMON FACILITY  
 93 DEFINES COMMON FACILITY  
 94 DEFINES COMMON FACILITY  
 95 DEFINES COMMON FACILITY  
 96 DEFINES COMMON FACILITY  
 97 DEFINES COMMON FACILITY  
 98 DEFINES COMMON FACILITY  
 99 DEFINES COMMON FACILITY  
 100 DEFINES COMMON FACILITY

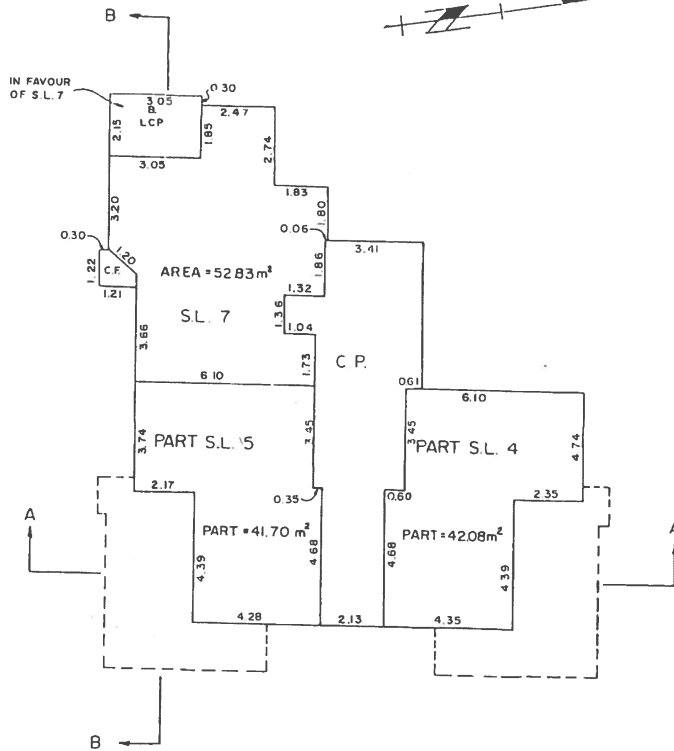
  
 B.C.L.S.  
 October 26 1987

# PLAN OF STRATA LOTS 4, 5 & 7

SCALE 1 : 125



STRATA PLAN VR 2010



PLAN OF THIRD FLOOR BUILDING 'A'

NOTE:

- S.L. DENOTES STRATA LOT
- C.P. DENOTES COMMON PROPERTY
- L.C.P. DENOTES LIMITED COMMON PROPERTY
- C.F. DENOTES COMMON FACILITY
- B. DENOTES BALCONY

BALCONIES ARE COMMON PROPERTY AND ARE NOT INCLUDED IN SQUARE METRE (M<sup>2</sup>) AREAS

ALL DISTANCES ARE IN METRES

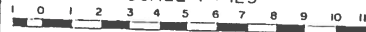
*BB*

B.C.L.S.  
October 26, 1987

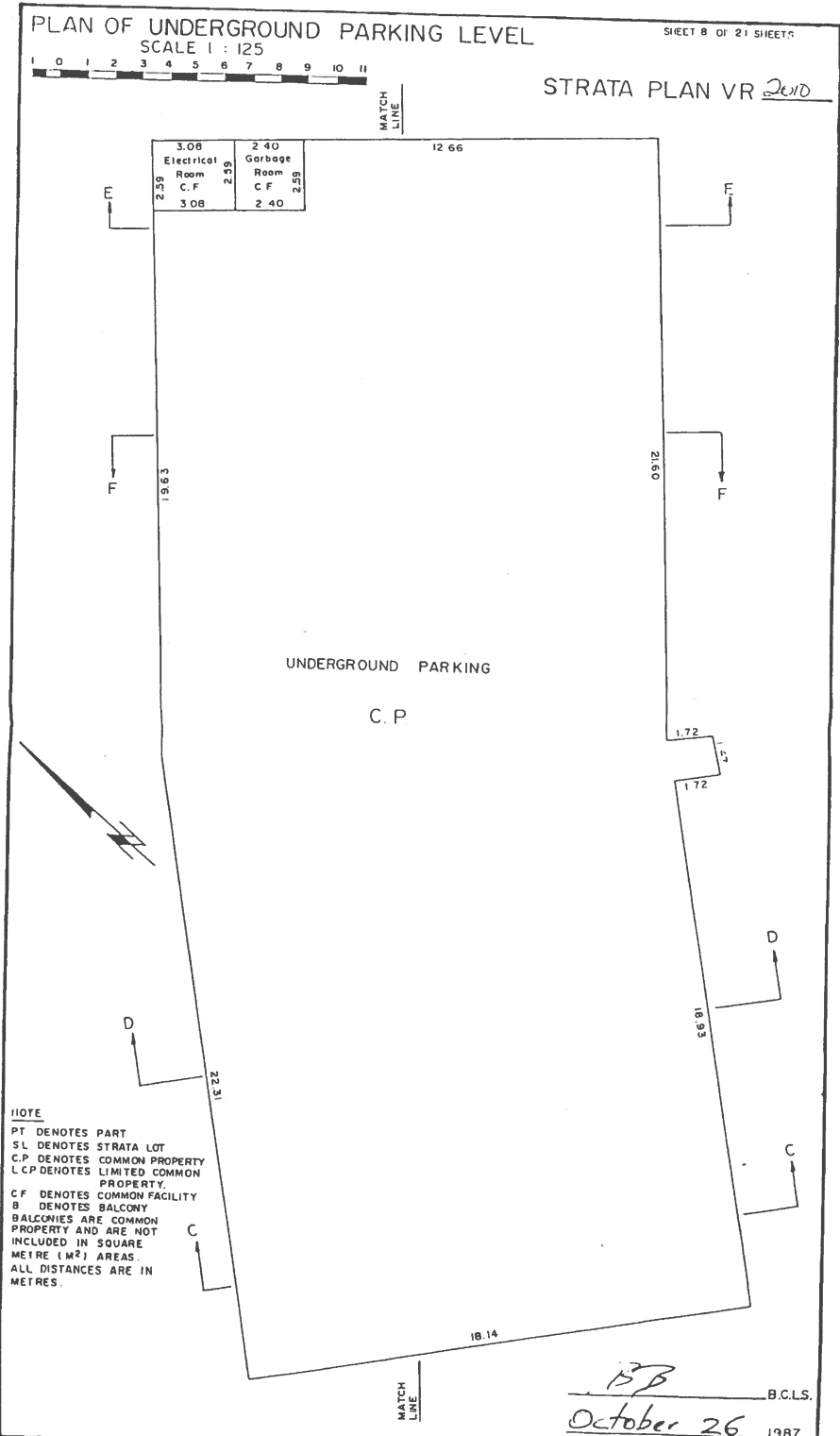
PLAN OF UNDERGROUND PARKING LEVEL

SHEET 8 OF 24 SHEETS

SCALE 1 : 125



STRATA PLAN VR *DWD*



**NOTE**  
 PT DENOTES PART  
 SL DENOTES STRATA LOT  
 C.P DENOTES COMMON PROPERTY  
 L.C.P DENOTES LIMITED COMMON  
 PROPERTY.  
 C.F DENOTES COMMON FACILITY  
 B DENOTES BALCONY  
 BALCONIES ARE COMMON  
 PROPERTY AND ARE NOT  
 INCLUDED IN SQUARE  
 METRE (M<sup>2</sup>) AREAS.  
 ALL DISTANCES ARE IN  
 METRES.

*BB*  
 B.C.L.S.  
 October 26, 1987

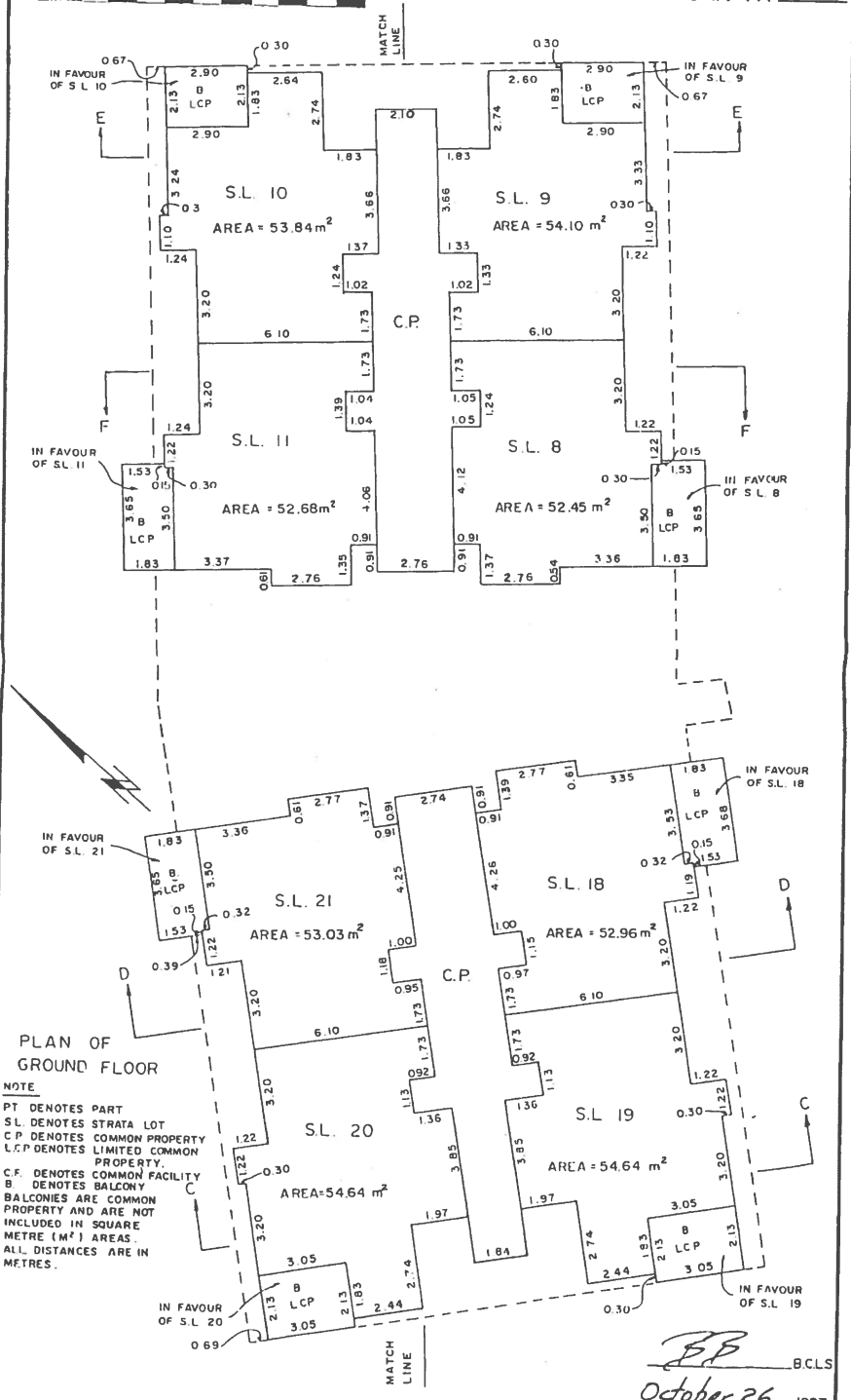
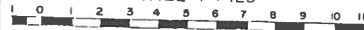


PLAN OF STRATA LOTS 8-11 & 18-21

SHEET 9 OF 21 SHEETS

SCALE 1 : 125

STRATA PLAN VR 2010



PLAN OF GROUND FLOOR

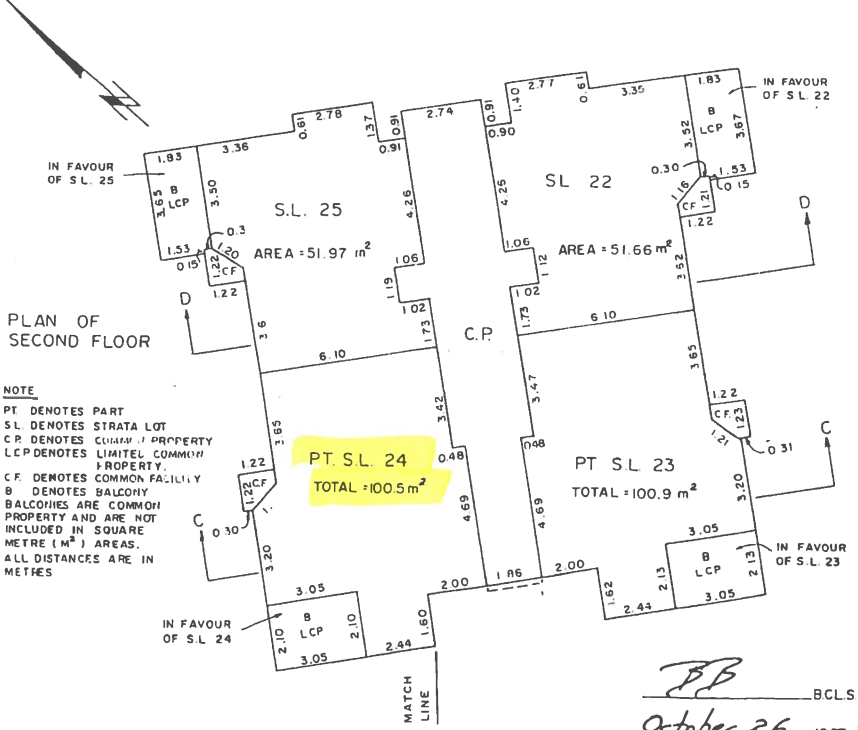
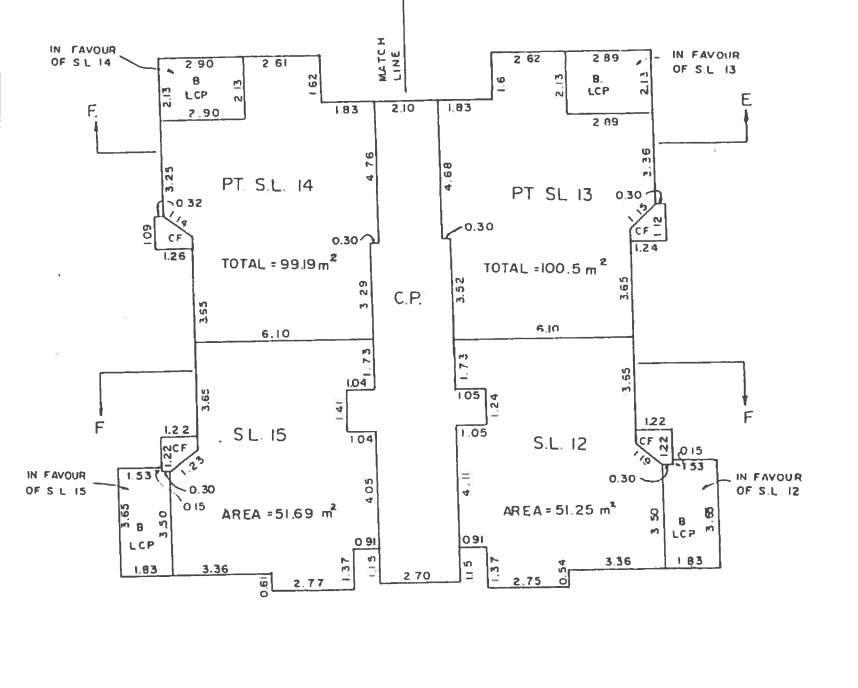
NOTE  
 PT DENOTES PART  
 S.L. DENOTES STRATA LOT  
 C.P. DENOTES COMMON PROPERTY  
 L.C.P. DENOTES LIMITED COMMON PROPERTY.  
 C.F. DENOTES COMMON FACILITY  
 B DENOTES BALCONY  
 BALCONIES ARE COMMON PROPERTY AND ARE NOT INCLUDED IN SQUARE METRE (M<sup>2</sup>) AREAS.  
 ALL DISTANCES ARE IN METRES.

BP B.C.L.S.  
 October 26, 1987

PLAN OF STRATA LOTS 12-15 & 22-25  
SCALE 1 : 125

SHEET 10 OF 21 SHEETS

STRATA PLAN VR 2010



**NOTE**  
 PT DENOTES PART  
 SL DENOTES STRATA LOT  
 C.P. DENOTES COMMON PROPERTY  
 LCP DENOTES LIMITED COMMON PROPERTY  
 C.F. DENOTES COMMON FACILITY  
 B DENOTES BALCONY  
 BALCONIES ARE COMMON PROPERTY AND ARE NOT INCLUDED IN SQUARE METRE (M²) AREAS.  
 ALL DISTANCES ARE IN METRES

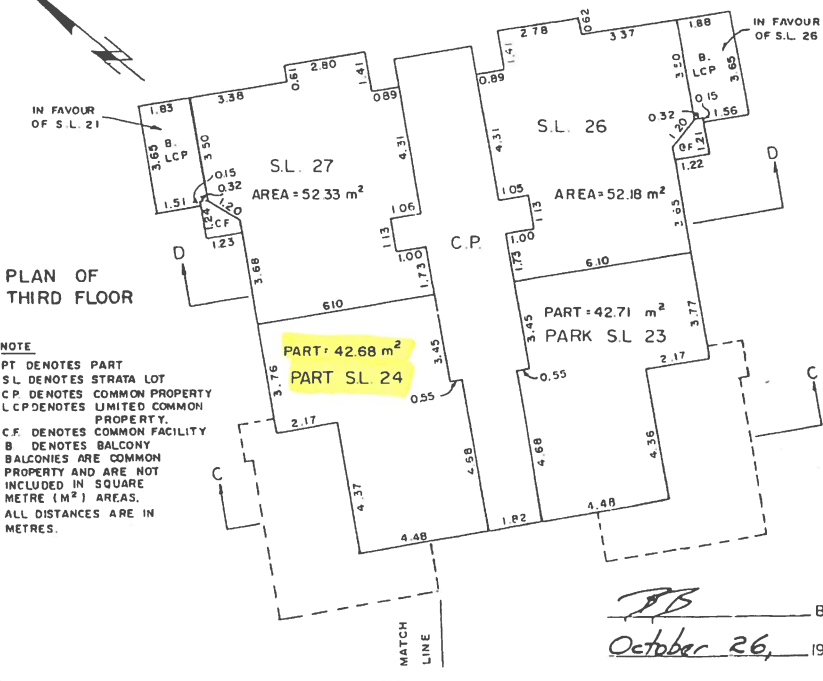
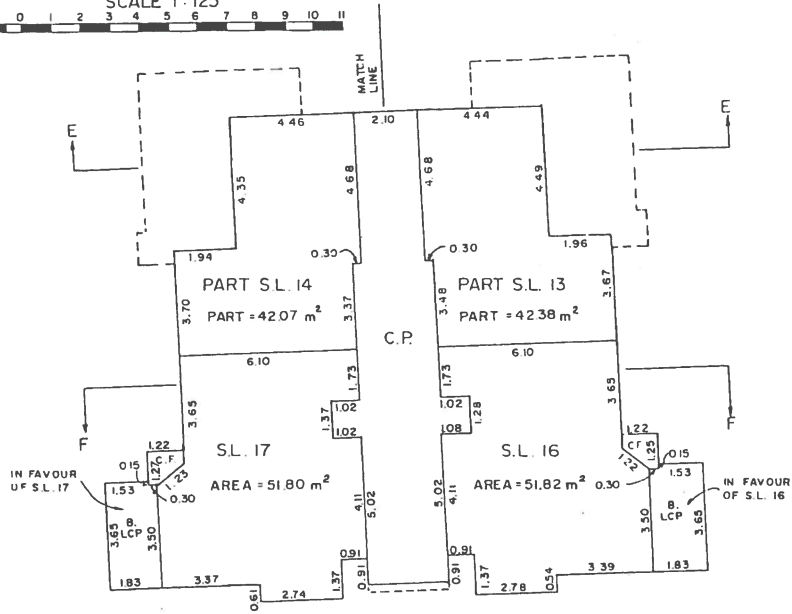
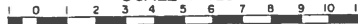
*BB*  
 BCL5  
 October 26, 1987

PLAN OF STRATA LOTS 13,14,16,17,  
23,24, 26 & 27

SHEET II OF 21 SHEETS

STRATA PLAN VR 2010

SCALE 1:125



PLAN OF  
THIRD FLOOR

**NOTE**  
 PT DENOTES PART  
 SL DENOTES STRATA LOT  
 C.P. DENOTES COMMON PROPERTY  
 L.C.P. DENOTES LIMITED COMMON  
 PROPERTY.  
 C.F. DENOTES COMMON FACILITY  
 B. DENOTES BALCONY  
 BALCONIES ARE COMMON  
 PROPERTY AND ARE NOT  
 INCLUDED IN SQUARE  
 METRE (M<sup>2</sup>) AREAS.  
 ALL DISTANCES ARE IN  
 METRES.

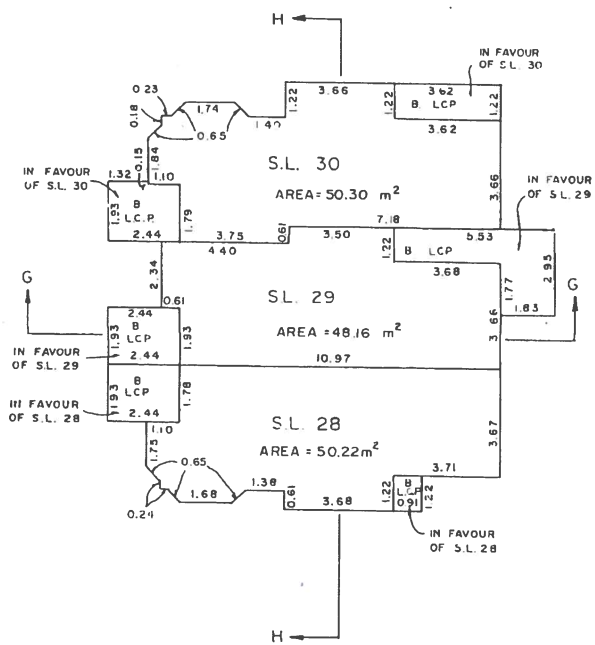
*BB* B.C.L.S.  
 October 26, 1987

### PLAN OF STRATA LOTS 28-30

SCALE 1:125



STRATA PLAN VR 2010



PLAN OF LOWER FLOOR

NOTE  
S.L. DENOTES STRATA LOT  
C.P. DENOTES COMMON PROPERTY  
L.C.P. DENOTES LIMITED COMMON PROPERTY  
C.F. DENOTES COMMON FACILITY  
B DENOTES BALCONY  
BALCONIES ARE COMMON PROPERTY AND ARE NOT INCLUDED IN SQUARE METRE (m<sup>2</sup>) AREAS  
ALL DISTANCES ARE IN METRES.

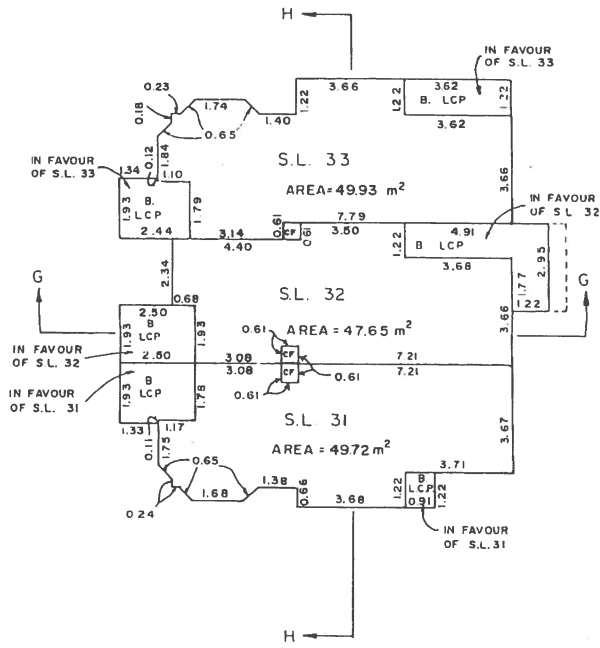
*BB* B.C.L.S.  
October 26, 1987

# PLAN OF STRATA LOTS 31-33

SCALE 1:125



STRATA PLAN VR 2010



PLAN OF UPPER FLOOR

NOTE  
 S.L. DENOTES STRATA LOT  
 C.P. DENOTES COMMON PROPERTY  
 L.C.P. DENOTES LIMITED COMMON PROPERTY  
 C.F. DENOTES COMMON FACILITY  
 B DENOTES BALCONY  
 BALCONIES ARE COMMON PROPERTY AND ARE NOT INCLUDED IN SQUARE METRE (M<sup>2</sup>) AREAS  
 ALL DISTANCES ARE IN METRES

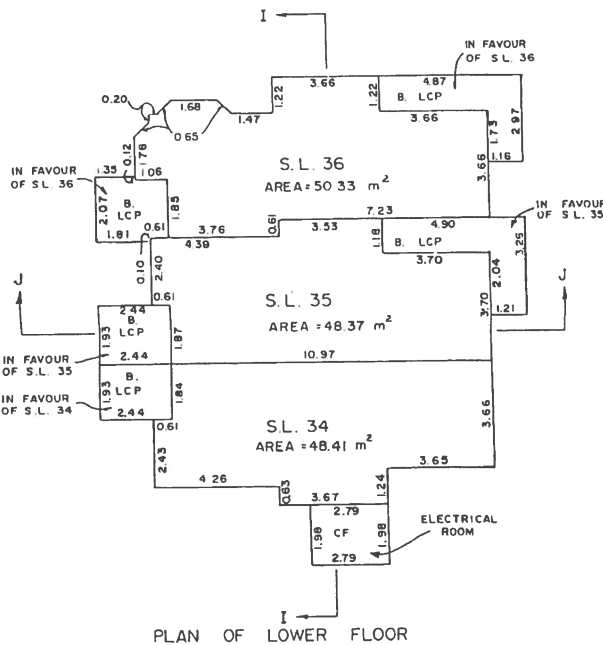
*BB* B.C.L.S.  
 October 26, 1987

# PLAN OF STRATA LOTS 34 - 36

SCALE 1:125



STRATA PLAN VR 2010



NOTE:  
 S.L. DENOTES STRATA LOT  
 C.P. DENOTES COMMON PROPERTY  
 L.C.P. DENOTES LIMITED COMMON PROPERTY  
 C.F. DENOTES COMMON FACILITY  
 B. DENOTES BALCONY  
 BALCONIES ARE COMMON PROPERTY AND ARE NOT INCLUDED IN SQUARE METRE (M<sup>2</sup>) AREAS  
 ALL DISTANCES ARE IN METRES.

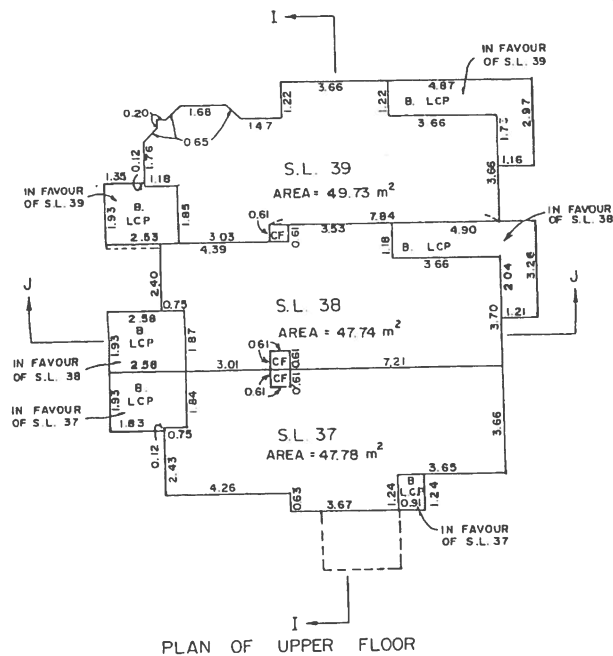
*BD* B.C.L.S.  
 October 26, 1987

# PLAN OF STRATA LOTS 37 - 39

SCALE 1:125



STRATA PLAN VR 2010



PLAN OF UPPER FLOOR

NOTE  
 S L DENOTES STRATA LOT  
 C P DENOTES COMMON PROPERTY  
 L C P DENOTES LIMITED COMMON PROPERTY  
 C F DENOTES COMMON FACILITY  
 B DENOTES BALCONY  
 BALCONIES ARE COMMON PROPERTY AND ARE NOT INCLUDED IN SQUARE METRE (M<sup>2</sup>) AREAS  
 ALL DISTANCES ARE IN METRES.

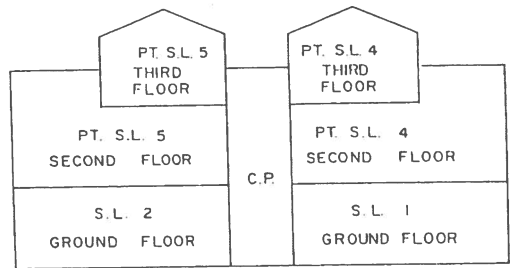
*BB*  
 B.C.L.S.  
 October 26 1987

CROSS - SECTIONS

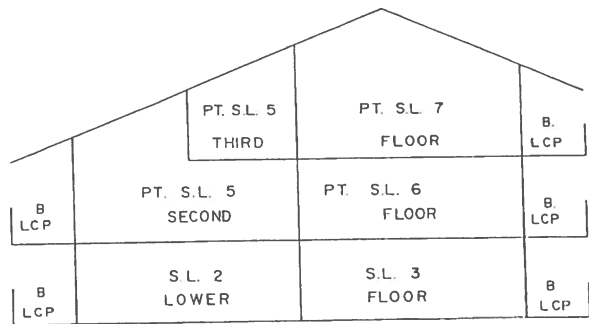
SCALE 1:125



STRATA PLAN VR 2010



CROSS-SECTION 'A'-'A'



CROSS-SECTION 'B'-'B'

NOTE:  
 S.L. DENOTES STRATA LOT  
 C.P. DENOTES COMMON PROPERTY  
 L.C.P. DENOTES LIMITED COMMON PROPERTY  
 C.F. DENOTES COMMON FACILITY  
 B. DENOTES BALCONY  
 BALCONIES ARE COMMON PROPERTY AND ARE NOT INCLUDED IN SQUARE METRE (M<sup>2</sup>) AREAS  
 ALL DISTANCES ARE IN METRES.

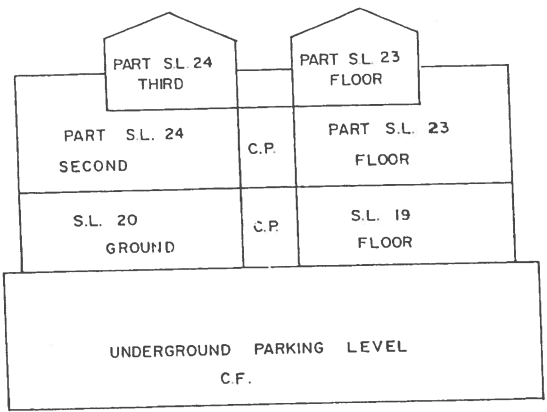
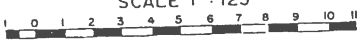
BB B.C.L.S.

October 26, 1987

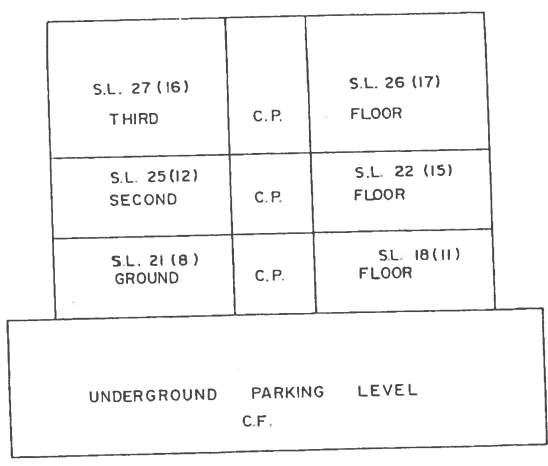


CROSS - SECTIONS  
SCALE 1 : 125

STRATA PLAN VR 2010



CROSS-SECTION 'C'-'C'

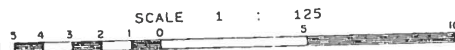


CROSS-SECTION 'D'-'D' & 'F'-'F'

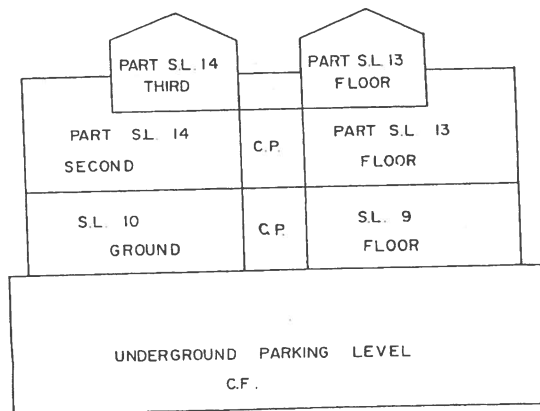
NOTE  
 S L DENOTES STRATA LOT  
 C P DENOTES COMMON PROPERTY  
 L C P DENOTES LIMITED COMMON PROPERTY  
 C F DENOTES COMMON FACILITY  
 B DENOTES BALCONY  
 BALCONIES ARE COMMON PROPERTY AND ARE NOT INCLUDED IN SQUARE METRE (M<sup>2</sup>) AREAS  
 ALL DISTANCES ARE IN METRES

*BB* RCLS  
 October 26, 1987

### CROSS-SECTIONS



STRATA PLAN VR 210



CROSS-SECTION ('E'-'E')

NOTE:  
 S.L. DENOTES STRATA LOT  
 C.P. DENOTES COMMON PROPERTY  
 L.C.P. DENOTES LIMITED COMMON PROPERTY  
 B DENOTES BALCONY  
 BALCONIES ARE COMMON PROPERTY AND ARE NOT INCLUDED IN SQUARE METRE (M<sup>2</sup>) AREAS  
 ALL DISTANCES ARE IN METRES

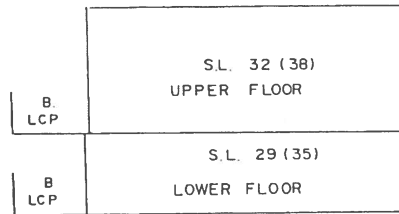
*BP* ..... B.C.L.S.  
October 26, 1987.

CROSS - SECTIONS

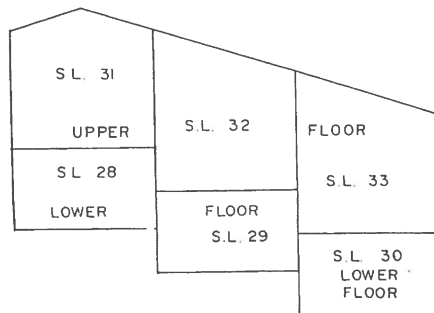
SCALE 1:125



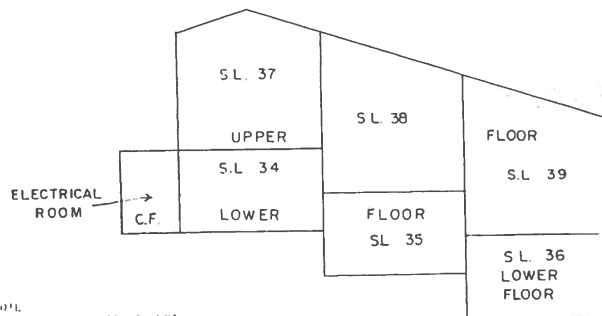
STRATA PLAN VR 2010



CROSS-SECTION 'G'-'G' (& 'J'-'J')



CROSS - SECTION 'H'-'H'



S.L. DENOTES STRATA LOT  
 C.P. DENOTES COMMON PROPERTY  
 I.C.P. DENOTES LIMITED COMMON PROPERTY  
 C.F. DENOTES COMMON FACILITY  
 B DENOTES BATTERY  
 BATTERIES ARE COMMON PROPERTY AND ARE NOT INCLUDED IN SQUARE METRE (M<sup>2</sup>) AREAS  
 ALL DISTANCES ARE IN METRES

CROSS - SECTION 'I'-'I'

BB B.C.L.S.  
 October 26, 1987

STRATA PLAN VR 2010

RECORD OF BY LAWS AND ORDERS ,ETC.

FILING		DOCUMENT	
NUMBER	DATE	DATE	NATURE AND PARTICULARS

BB B.C.L.S.  
October 26, 1987

