

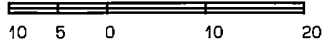
STRATA PLAN

V.R. 2486

STRATA PLAN OF  
LOT 25, D.L. 3903,  
PLAN 21960, GP. 1, N.W.D.

Resort Municipality of Whistler

SCALE 1: 500 (METRIC)



All distances shown are in metres.

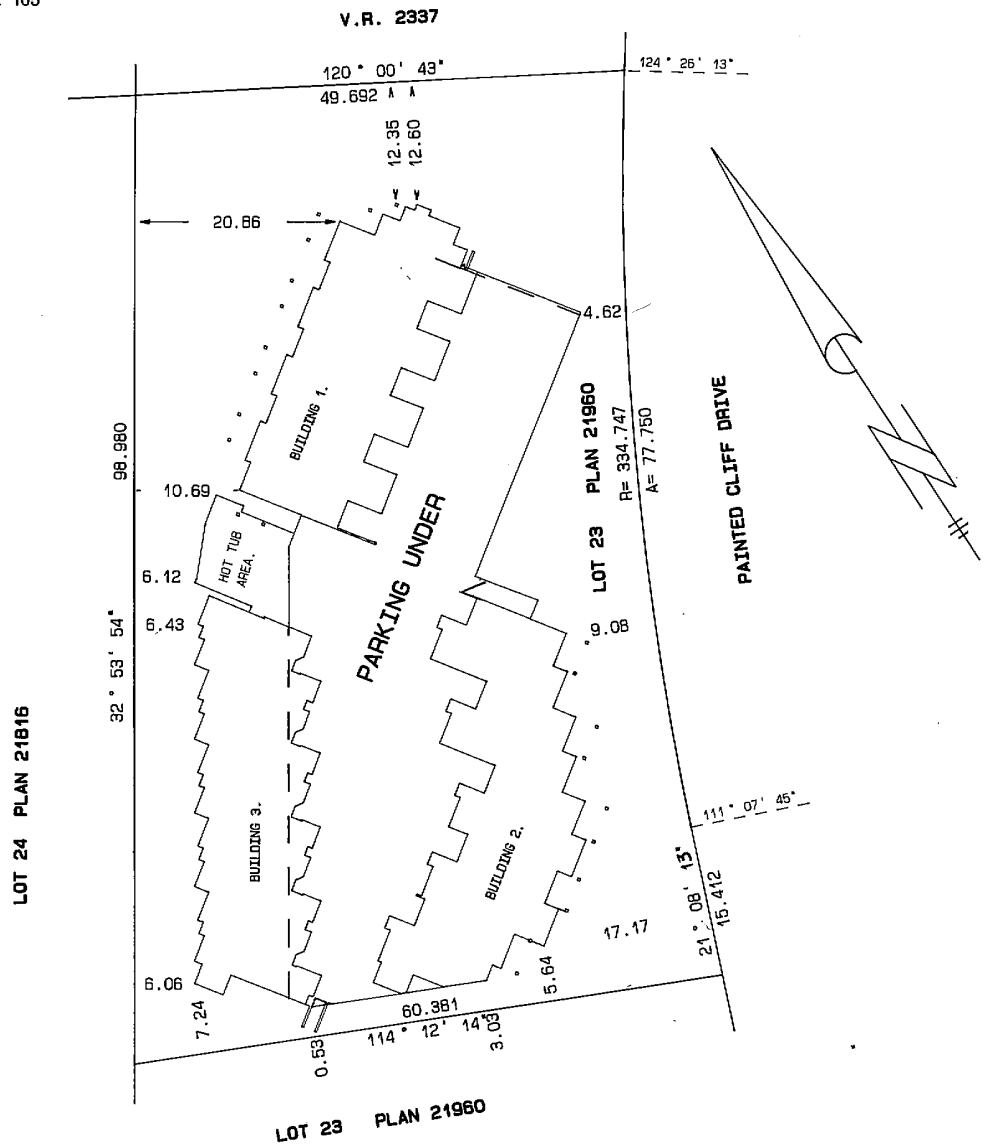
The Address for the Service of Documents  
on the 'Strata Corporation' is:-

'The Owners' Strata Plan No. V.R. 2486  
c/o- Owen, Bird,  
28th Flr. 595 Burrard ST.,  
Vancouver, B.C..  
V7X 1J5

Strata Plan 2486 deposited and  
registered in the Land Title Office at  
Vancouver, B.C. this 20<sup>th</sup> day of  
SEPTEMBER 1989

*[Signature]*  
Deputy Registrar

GC 120369  
Civic Address is:-  
4845 Painted Cliff Drive,  
Whistler, B.C.  
VON 1B0



I, G.A.McDougall, of Whistler, B.C.,  
British Columbia Land Surveyor,  
hereby certify that the buildings  
erected on the parcel described above  
are wholly within the external boundaries  
of that parcel. Dated at Whistler on  
this 26th day of August, 1989

*[Signature]*  
B.C.L.S.

- LEGEND  
BEARINGS ARE ASTRONOMIC  
AND DERIVED FROM PLAN 21960  
S.L. STRATA LOT  
PT -PART  
D -DECK  
L.C.P.-LIMITED COMMON PROPERTY  
C -COMMON PROPERTY  
s.m. -SQUARE METERS  
—=PROPERTY LINE

THIS PLAN LIES WITHIN THE  
'SQUAMISH-LILLOOET' REGIONAL DISTRICT

HERMON, BUNBURY & OKE,  
PROFESSIONAL LAND SURVEYORS  
VANCOUVER AND WHISTLER, B.C.

26 August 1989

S-4945-1 ( J 89564 )

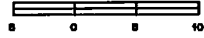


**BUILDING ONE**

**LEVEL ONE:**

**SCALE: 1:200 metric.**

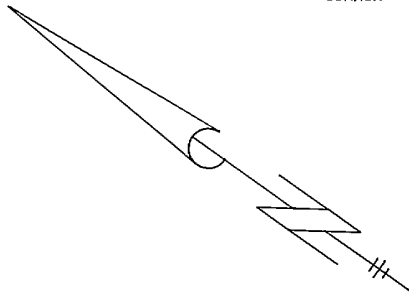
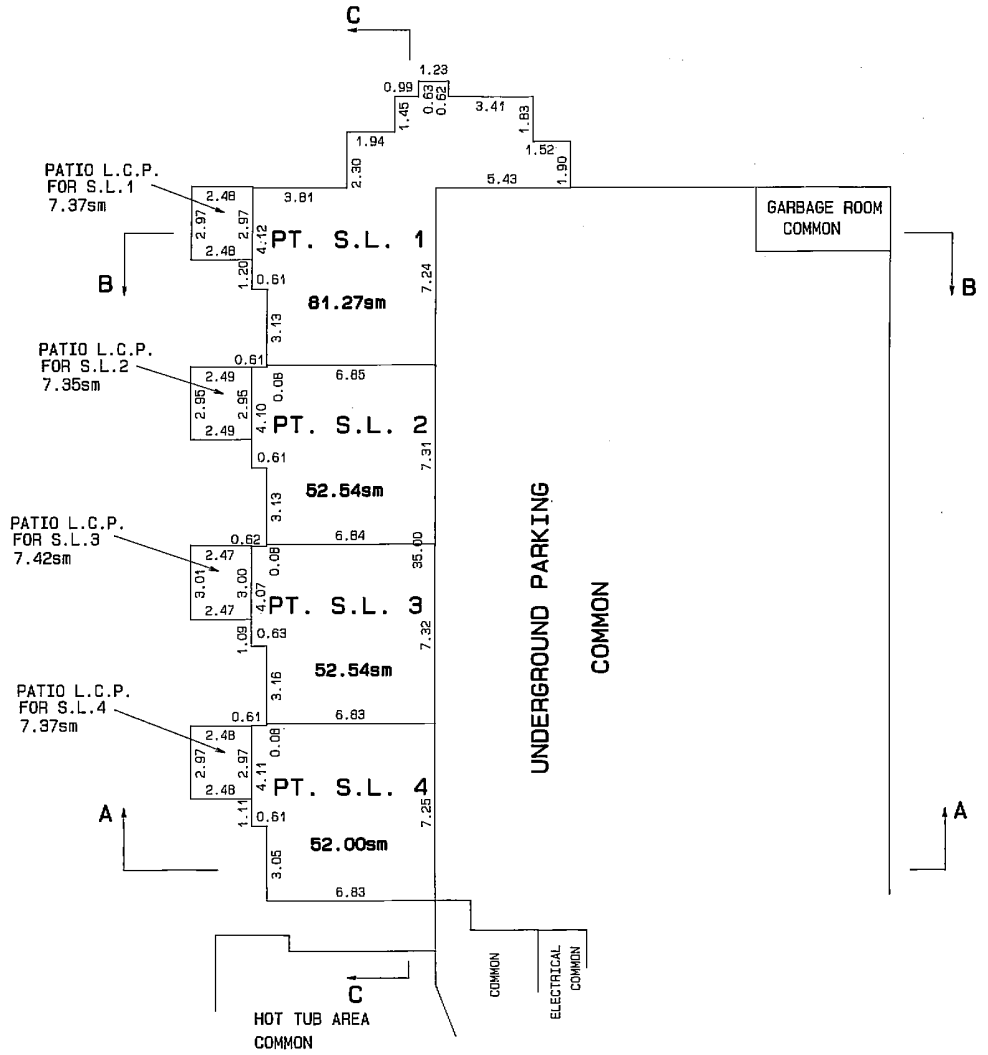
**ALL DISTANCES SHOWN ARE IN METRES**



Sheet 4 of 21 Sheets.

**STRATA PLAN**

**V.R.2486**



26 AUG. 1989

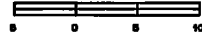
S-4946-4

**BUILDING ONE**

**LEVEL TWO:**

SCALE: 1:200 metric.

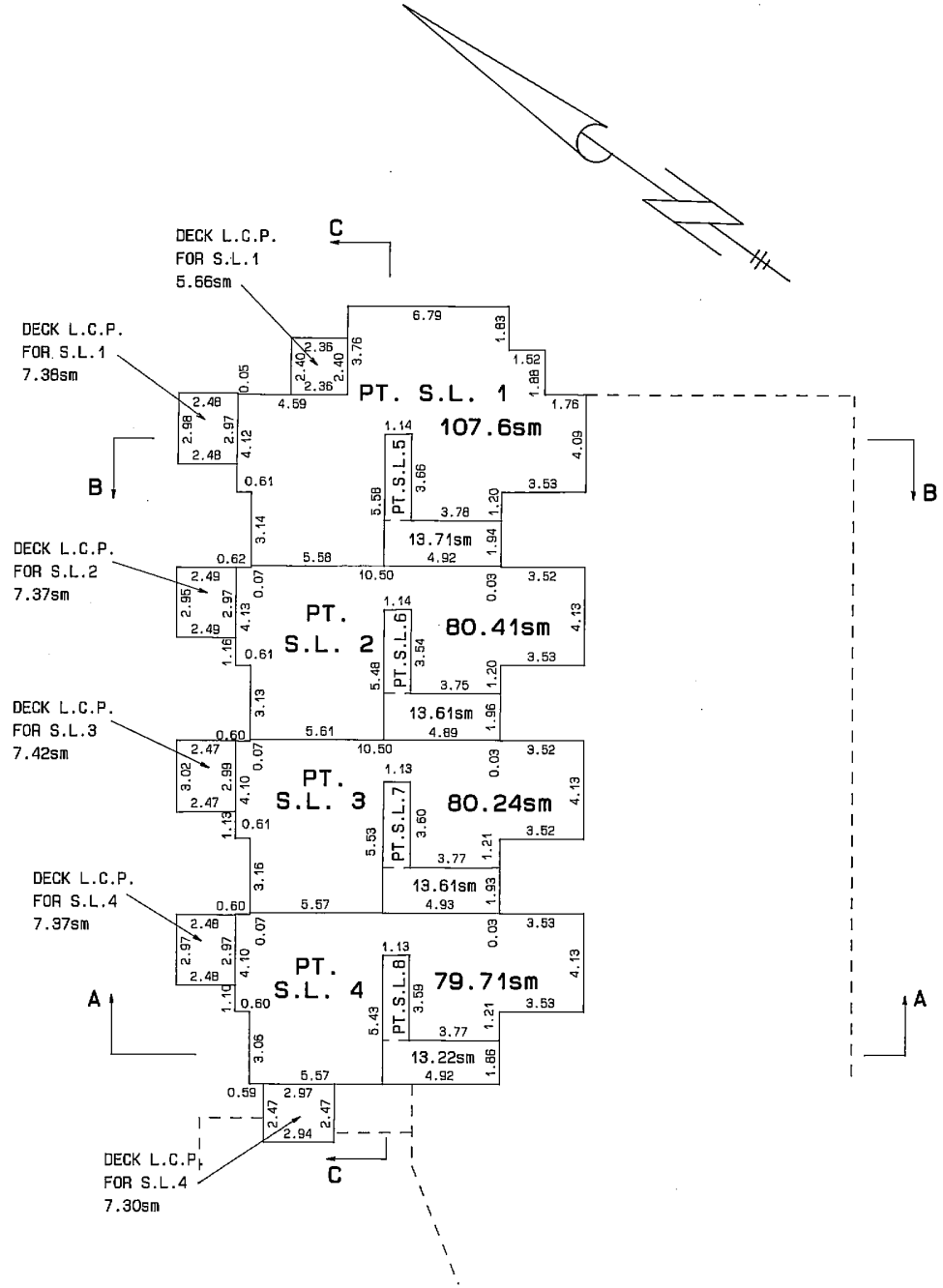
ALL DISTANCES SHOWN ARE IN METRES



Sheet 5 of 21 Sheets.

STRATA PLAN

V.R.2486



**TOTAL AREAS**

- S.L. 1= 188.87sm
- S.L. 2= 132.95sm
- S.L. 3= 132.78sm
- S.L. 4= 131.71sm

26 AUG. 1989

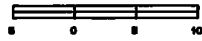
S-4946-5

**BUILDING ONE**

**LEVEL THREE:**

SCALE: 1:200 metric.

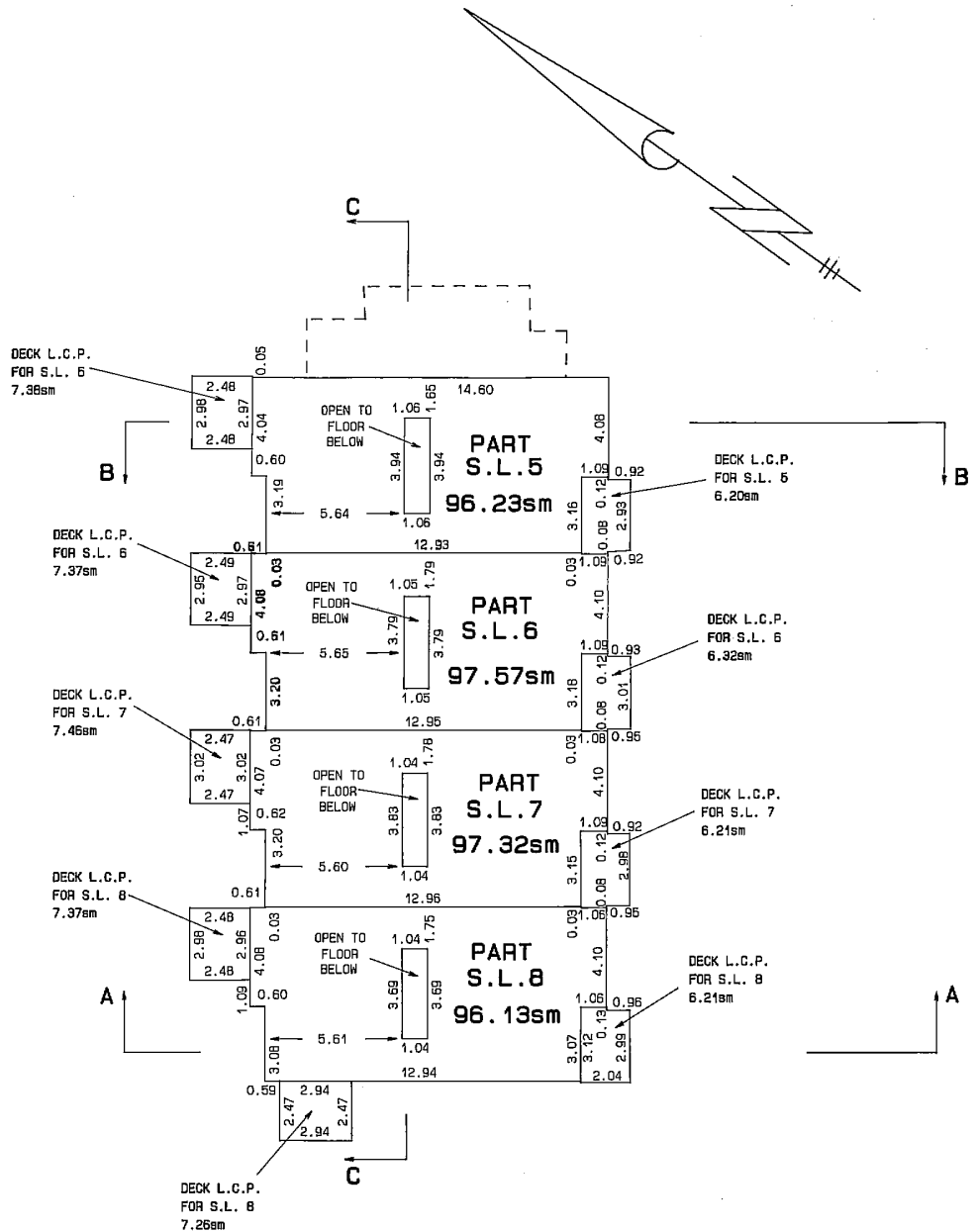
ALL DISTANCES SHOWN ARE IN METRES



Sheet 6 of 21 Sheets.

STRATA PLAN

V.R. 2486



**TOTAL AREAS**

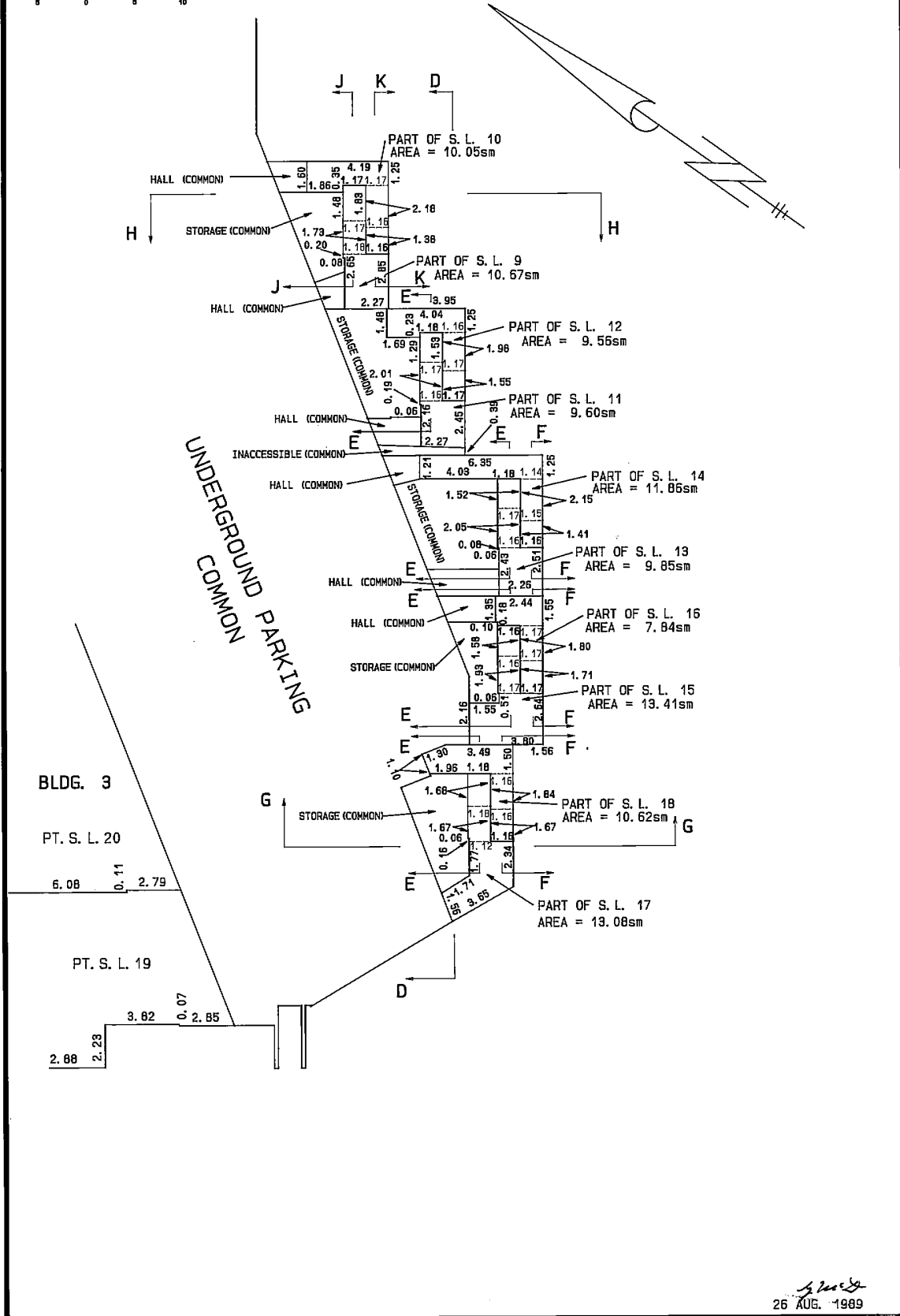
- S.L. 5= 109.94sm
- S.L. 6= 111.18sm
- S.L. 7= 110.93sm
- S.L. 8= 109.35sm

BUILDING TWO

LEVEL ONE:

SCALE: 1:200 metric.

ALL DISTANCES SHOWN ARE IN METRES



26 AUG. 1989

S-4946-7

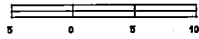
FILED VANASZ486 RCD:1998-02-26 ROST:2012-04-10-12.05.43.349

**BUILDING TWO**

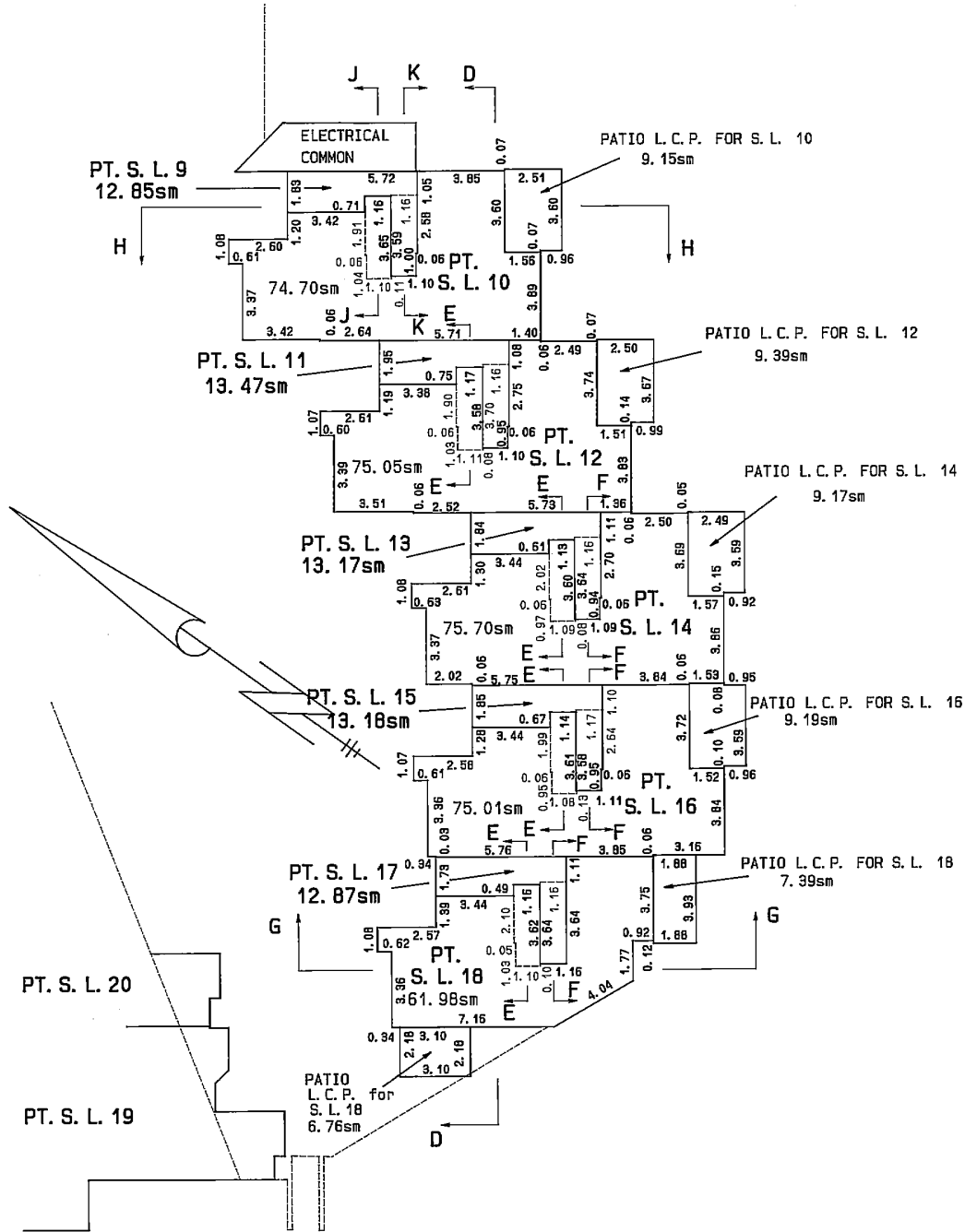
**LEVEL TWO:**

SCALE: 1:200 metric.

ALL DISTANCES SHOWN ARE IN METRES



V. R. 2486



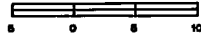
FILED VAVAS2486 RCD:1998-02-26 ROST:2012-04-10-12:05:43.349

**BUILDING TWO**

**LEVEL THREE:**

SCALE: 1:200 metric.

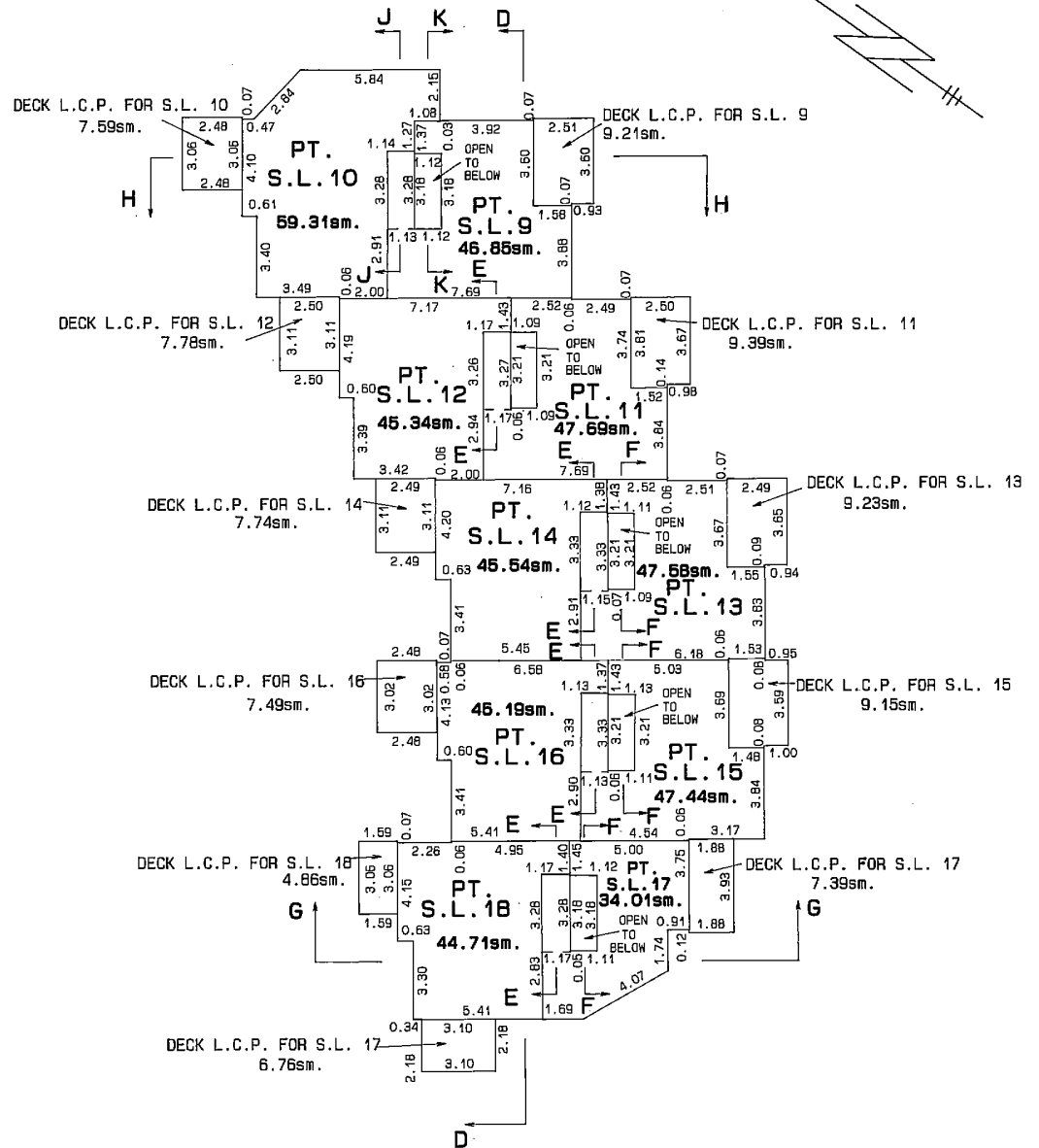
ALL DISTANCES SHOWN ARE IN METRES



Sheet 9 of 21 Sheets.

STRATA PLAN

V.R.2486



**TOTAL AREAS**

S.L. 10= 144.06sm.

S.L. 12= 129.95sm.

S.L. 14= 133.10sm.

S.L. 16= 128.04sm.

S.L. 18= 117.31sm.

26 AUG. 1989

S-4946-9

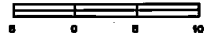


**BUILDING TWO**

**LEVEL FOUR:**

SCALE: 1:200 metric.

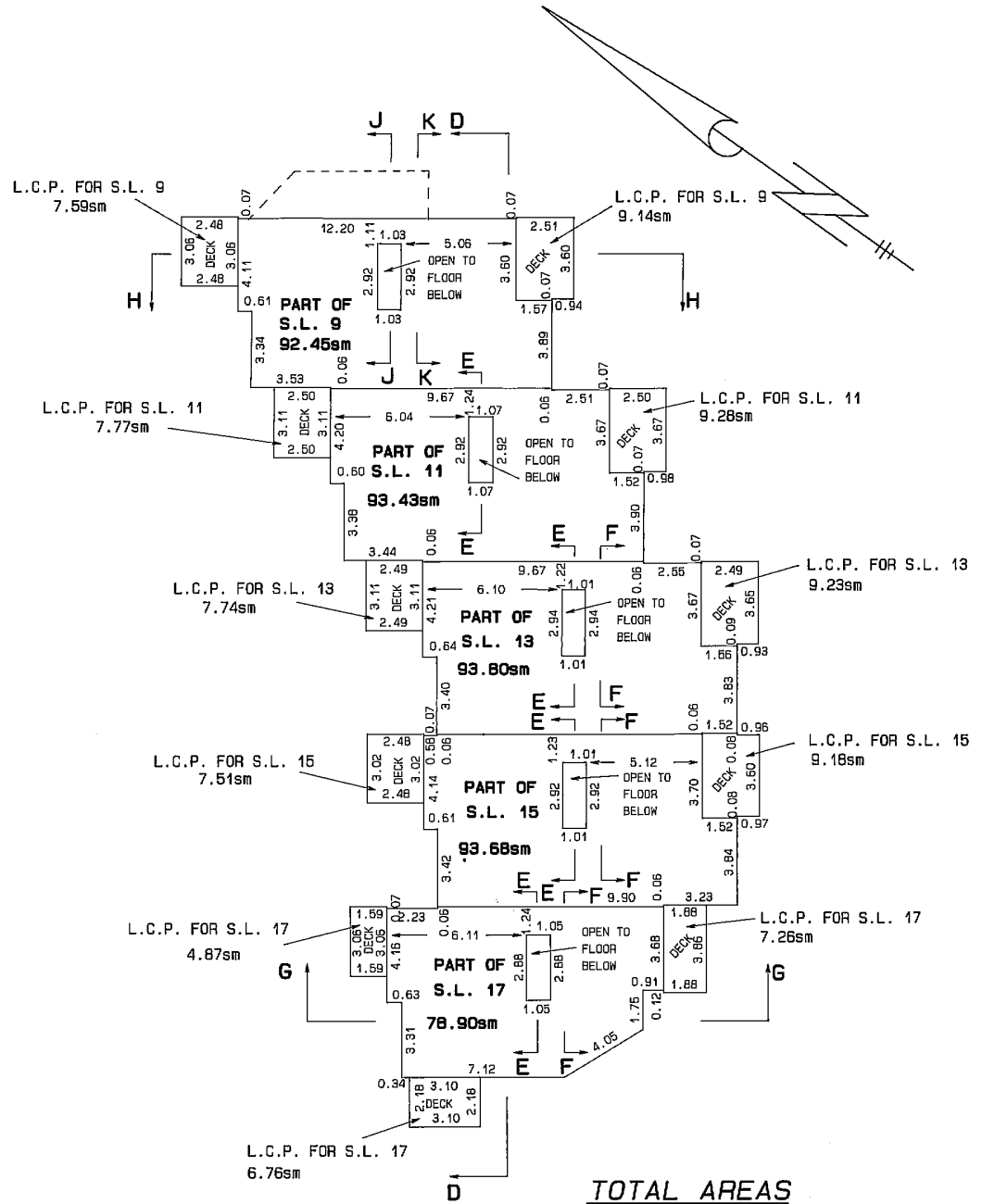
ALL DISTANCES SHOWN ARE IN METRES



Sheet 10 of 21 Sheets.

STRATA PLAN

V.R.2486



**TOTAL AREAS**

S.L. 9= 162.82sm.

S.L. 11= 164.19sm.

S.L. 13= 164.40sm.

S.L. 15= 167.71sm.

S.L. 17= 138.86sm.

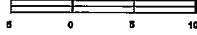
26 AUG. 1989

S-4946-10

**BUILDING THREE**

**LEVEL ONE:**

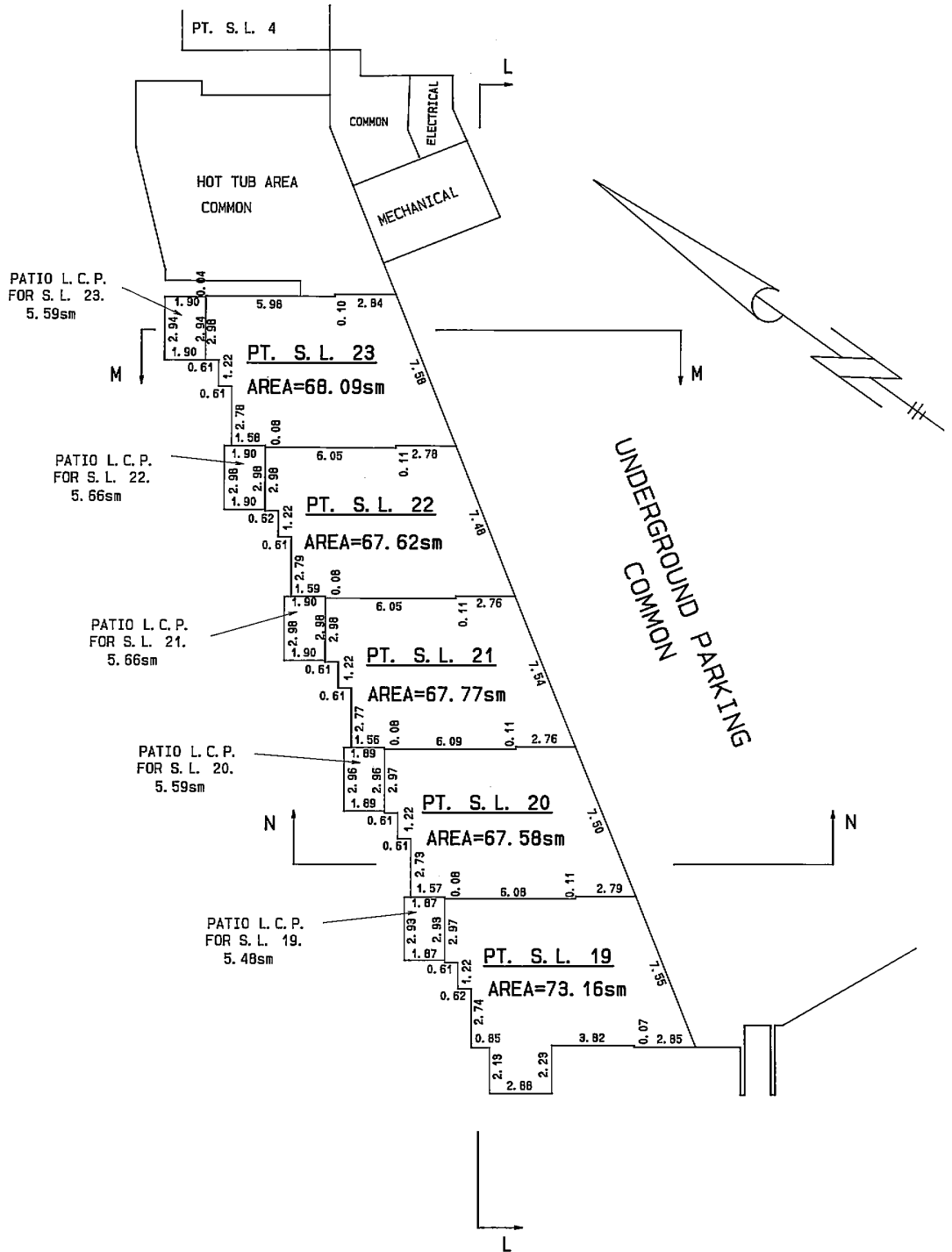
SCALE: 1:200 metric.  
ALL DISTANCES SHOWN ARE IN METRES



Sheet 11 of 21 Sheets.

STRATA PLAN

V. R.



26 AUG. 1989  
S-4946-11

FILED  
VANASZ486  
RD:1998-02-26  
RST:2012-04-10-12:05:43.349

**BUILDING THREE**

Sheet 12 of 21 Sheets.

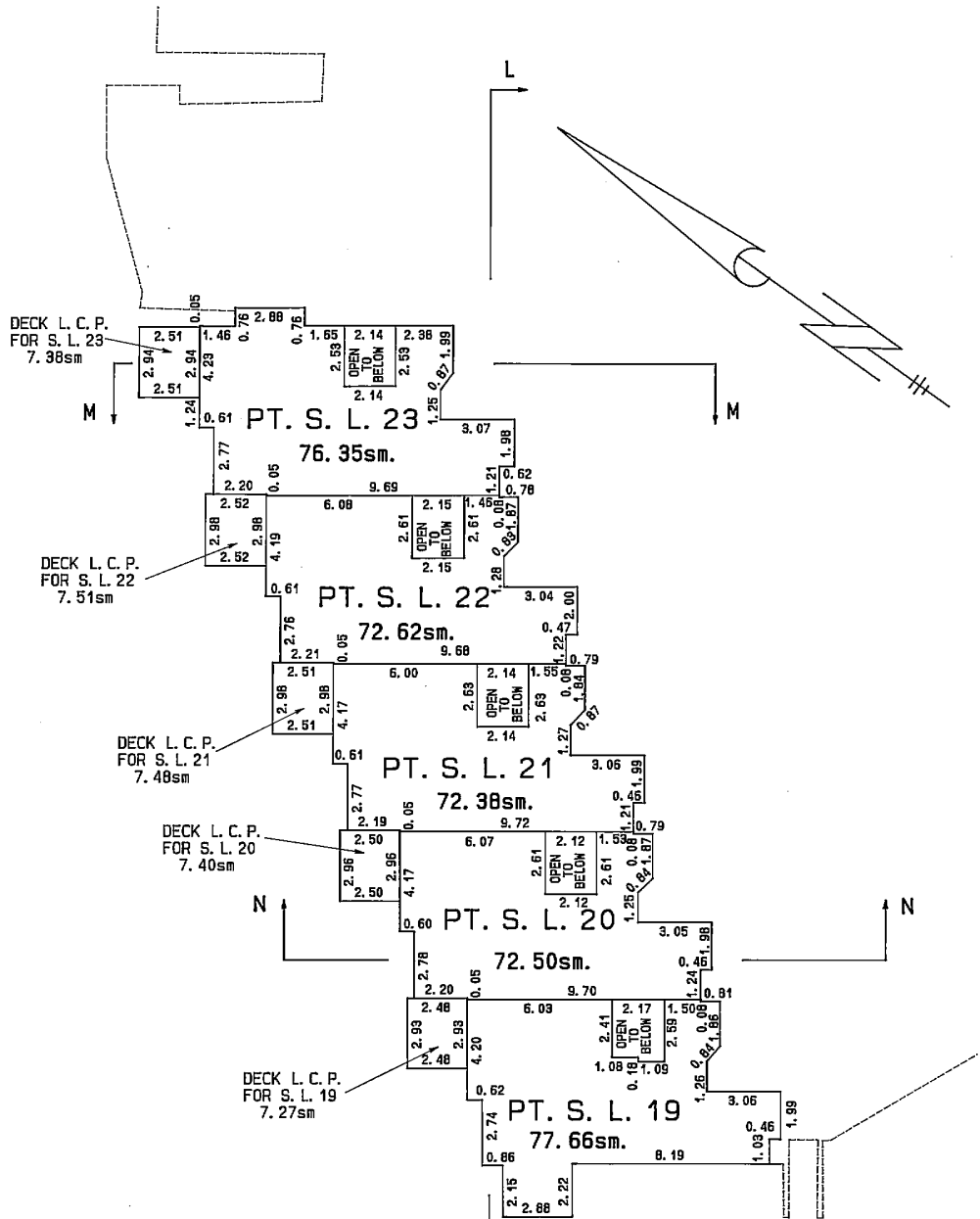
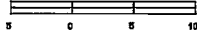
**LEVEL TWO:**

**STRATA PLAN**

SCALE: 1:200 metric.

**V. R.**

ALL DISTANCES SHOWN ARE IN METRES



**TOTAL AREAS**

S. L. 19=	150.82sm.
S. L. 20=	140.08sm.
S. L. 21=	140.15sm.
S. L. 22=	140.24sm.
S. L. 23=	144.44sm.

*J.R.D.*  
26 AUG. 1989

**BUILDING THREE**

Sheet 12 of 21 Sheets.

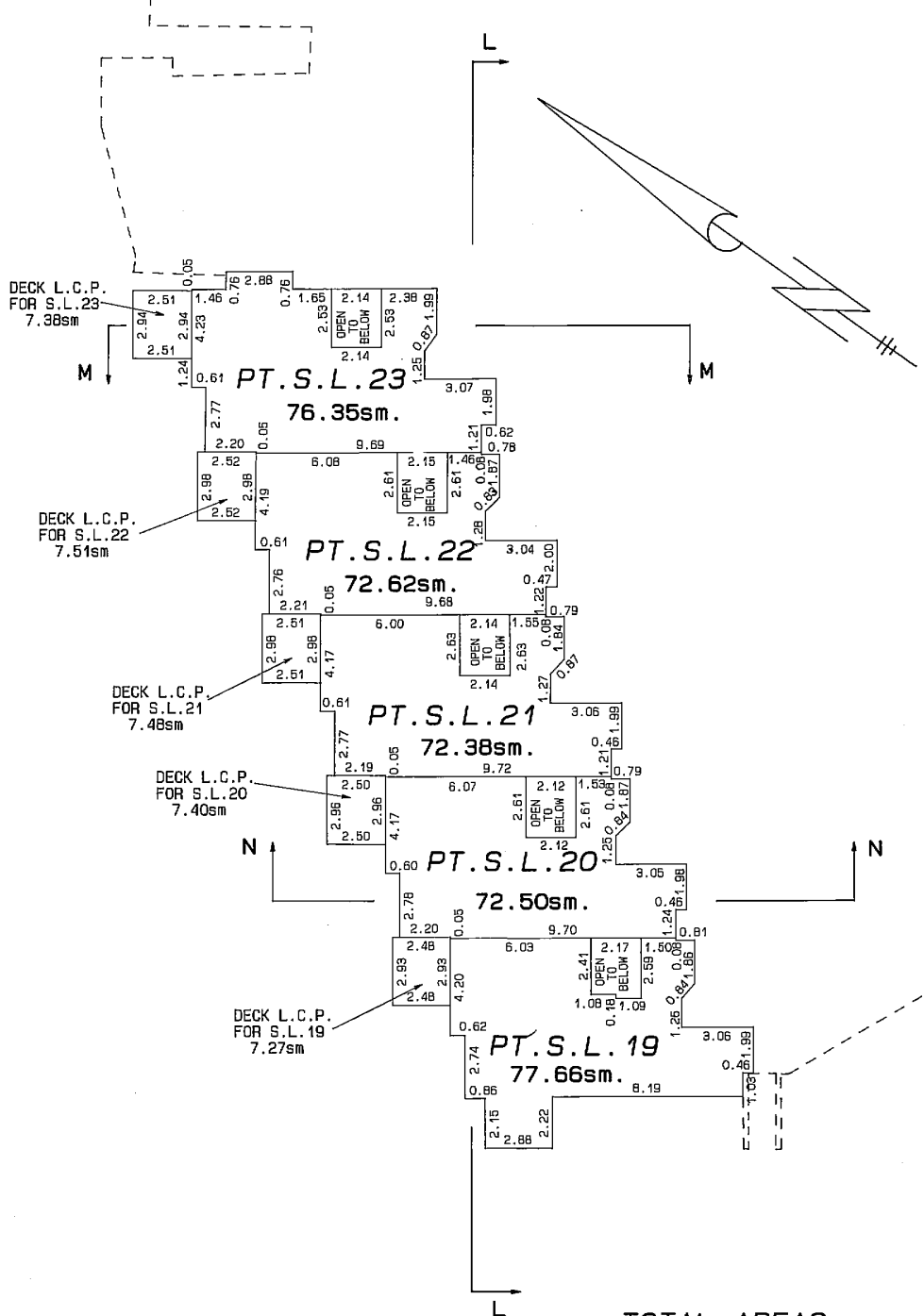
**LEVEL TWO:**

**STRATA PLAN**

**SCALE: 1:200 metric.**

**V.R.2486**

**ALL DISTANCES SHOWN ARE IN METRES**



**TOTAL AREAS**

- S.L. 19= 150.82sm.
- S.L. 20= 140.08sm.
- S.L. 21= 140.15sm.
- S.L. 22= 140.24sm.
- S.L. 23= 144.44sm.

26 AUG. 1989

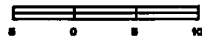
S-4946-12

V.R.2486

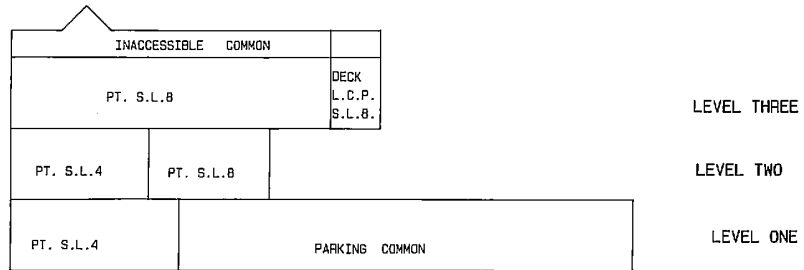
**SECTIONS:**

**SCALE: 1:200 metric.**

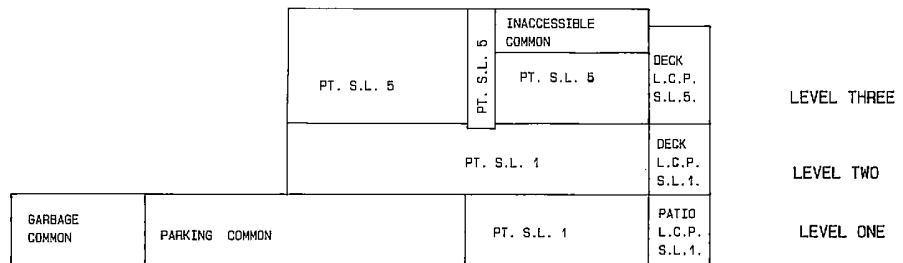
**ALL DISTANCES SHOWN ARE IN METRES**



**SECTION A-A**



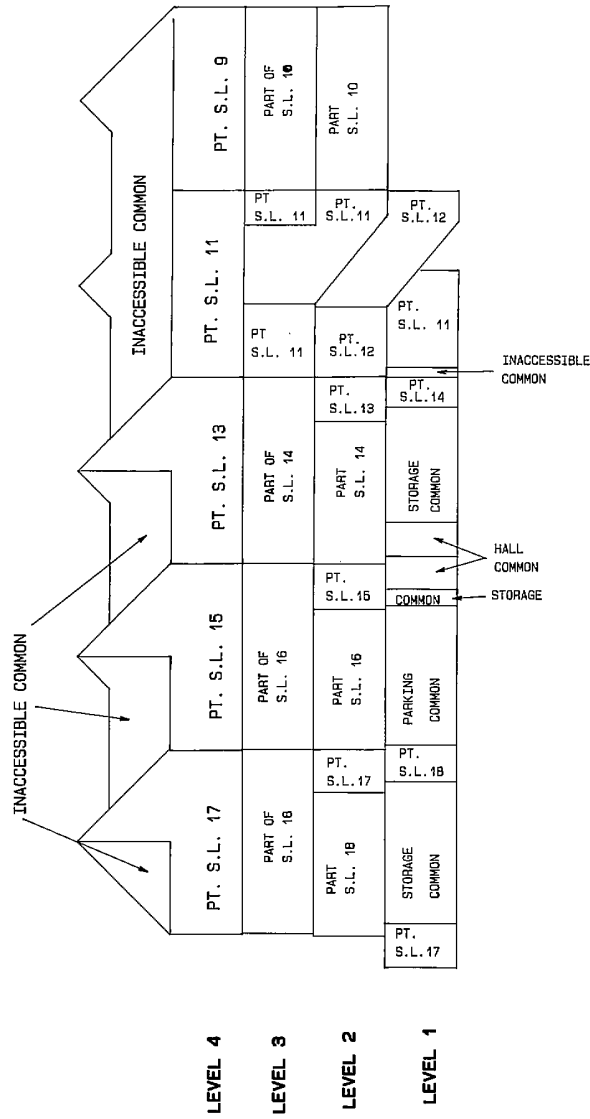
**SECTION B-B**



**SECTIONS:**

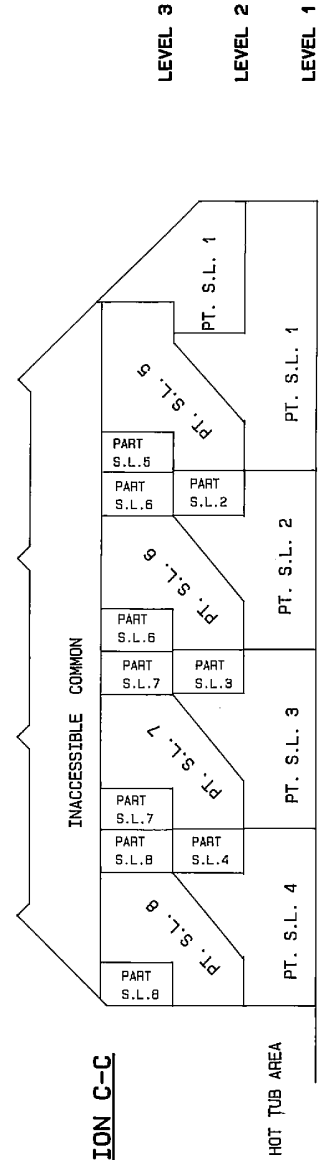
SCALE: 1:200 metric.

ALL DISTANCES SHOWN ARE IN METRES



LEVEL 4  
LEVEL 3  
LEVEL 2  
LEVEL 1

**SECTION D-D**



LEVEL 3  
LEVEL 2  
LEVEL 1

**SECTION C-C**

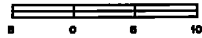
HOT TUB AREA

V.R.2486

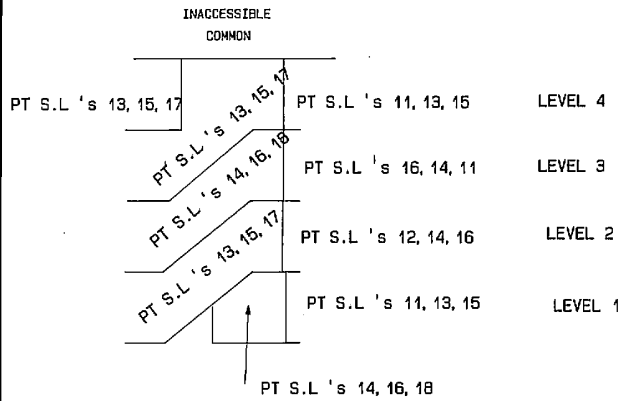
**SECTIONS:**

**SCALE: 1:200 metric.**

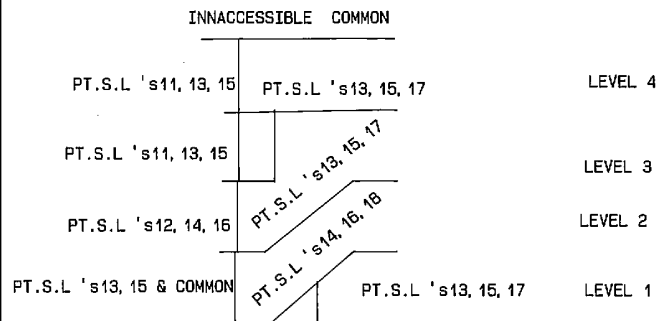
**ALL DISTANCES SHOWN ARE IN METRES**



**SECTION E-E**



**SECTION F-F**

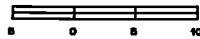


V.R.2486

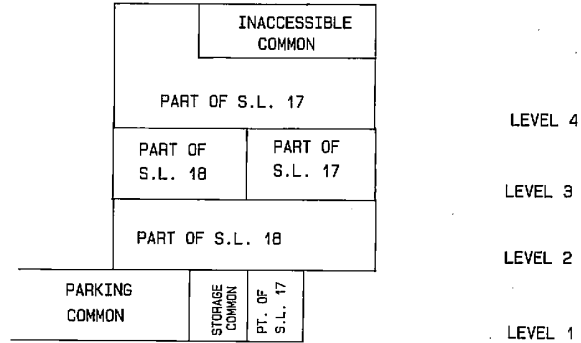
**SECTIONS:**

**SCALE: 1:200 metric.**

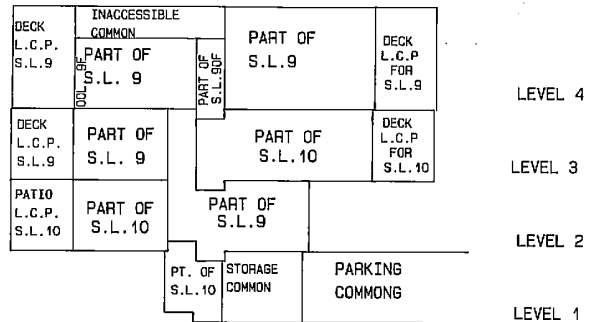
ALL DISTANCES SHOWN ARE IN METRES



**SECTION: G-G**



**SECTION H-H**





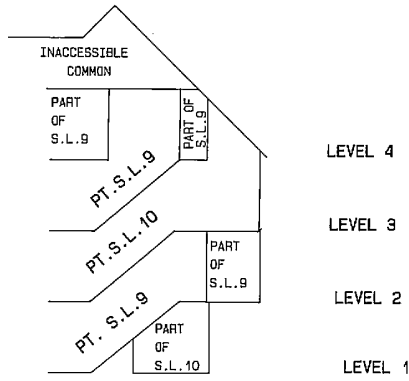
**SECTIONS:**

**SCALE: 1:200 metric.**

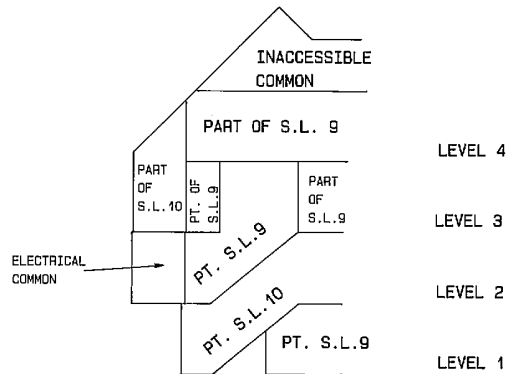
**ALL DISTANCES SHOWN ARE IN METRES**



**SECTION J-J**



**SECTION K-K**



26 AUG. 1989

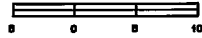
S-4946-17

V.R.2486

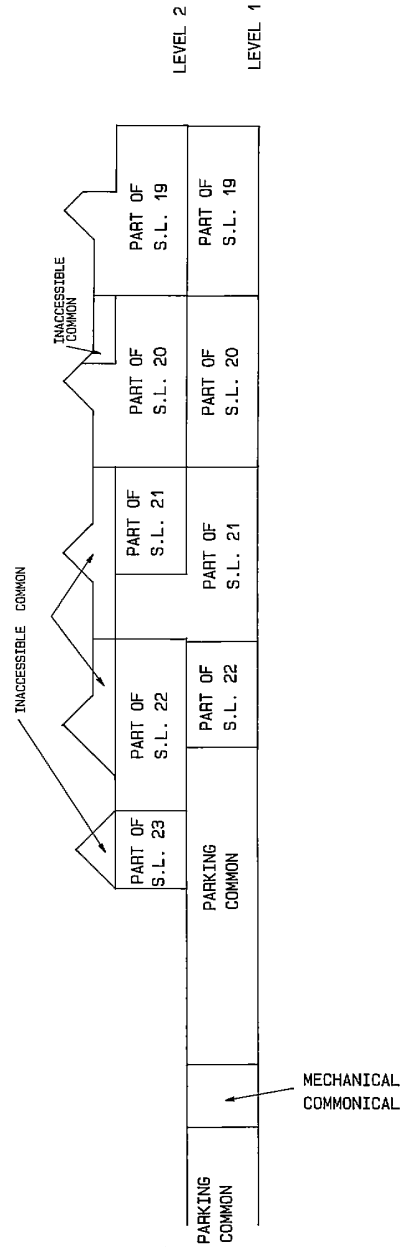
SECTIONS:

SCALE: 1:200 metric.

ALL DISTANCES SHOWN ARE IN METRES



SECTION L-L

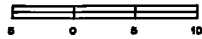


26 AUG. 1989

**SECTIONS:**

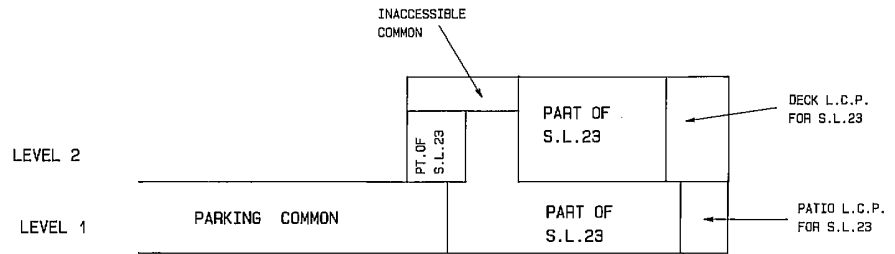
**SCALE: 1:200 metric.**

**ALL DISTANCES SHOWN ARE IN METRES**

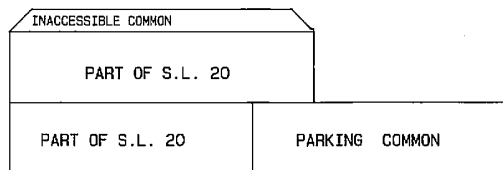


See also Plans  
'2000-2100' of the Building  
Cont. Information...

**SECTION M-M**



**SECTION N-N**



26 AUG. 1989



